

NOTICE TO PERSONS RECEIVING THIS DRAWING AND/OR TECHNICAL INFORMATION:

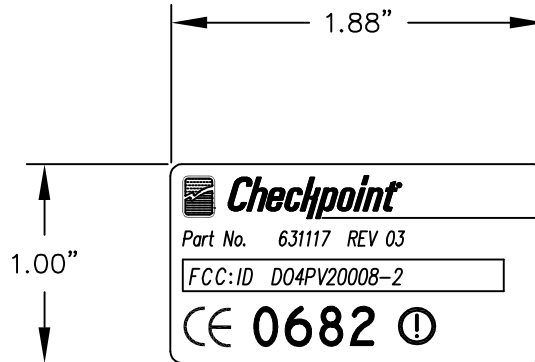
Checkpoint Systems claims proprietary rights to the material disclosed hereon. This drawing and/or technical information is issued in confidence for engineering information only and may not be reproduced or used to manufacture anything shown or referred to hereon without direct written permission from Checkpoint Systems to the user. This drawing and/or technical information is the property of Checkpoint Systems and is loaned for mutual assistance, to be returned when its purpose has been served.

THIS DRAWING AND/OR TECHNICAL INFORMATION IS THE PROPERTY OF CHECKPOINT SYSTEMS, INC.

NO DEVIATION OF THIS DRAWING WILL BE ACCEPTED UNLESS APPROVED BY CHECKPOINT SYSTEMS ENGINEERING DEPARTMENT.

REVISIONS

| LEVEL | DESCRIPTION | DATE | APPROVED |
|-------|-------------|------|----------|
| 00 | ECN6895 | | C.WAPLES |
| | | | |
| | | | |
| | | | |
| | | | |
| | | | |



Checkpoint
 101 Wolf Drive, Thorofare, New Jersey 08086
 Model No. PV2000 8.2MHz.
 Date of Mfr. K1F
 Serial No. 195-12345-A

This device complies with FCC Rules Part 15. Operation is subject to the following two conditions: (1) This device may not cause harmful interference and (2) this device must accept any interference that may be received, including interference that may cause undesired operation.

Note:

1. All lettering to be black.

| | | | | | | | |
|-------------|---------|---|-----------------------------------|----------|------|--------------------------------|--------------|
| | | UNLESS OTHERWISE SPECIFIED TOLERANCES ON: .XXX ±.005 .XX ±.01 FRACTIONS ±1/2 ANGLES ±1/2° FLATNESS WITHIN ±1/2° BREAK ALL CORNERS AND EDGES REMOVE BURRS .015 MAX. | ©1991 CHECKPOINT SYSTEMS, INC. | | | | |
| | | | DRAWN | R.BLASKO | DATE | 03/16/01 | |
| | | | CHECKED | B.RICHIE | | 03/16/01 | |
| | | | APPROVED | | | | |
| 631117 | 133303 | | | | | LABEL, AGENCY PV2000 8.2MHz | |
| NEXT ASSY | USED ON | MATERIAL | | | | SIZE | 542725 |
| APPLICATION | | FINISH | | | | A | |
| | | | | | | SCALE: 1/1 | SHEET 1 OF 1 |