



Figure 1: NS40 antenna with plastic strips removed

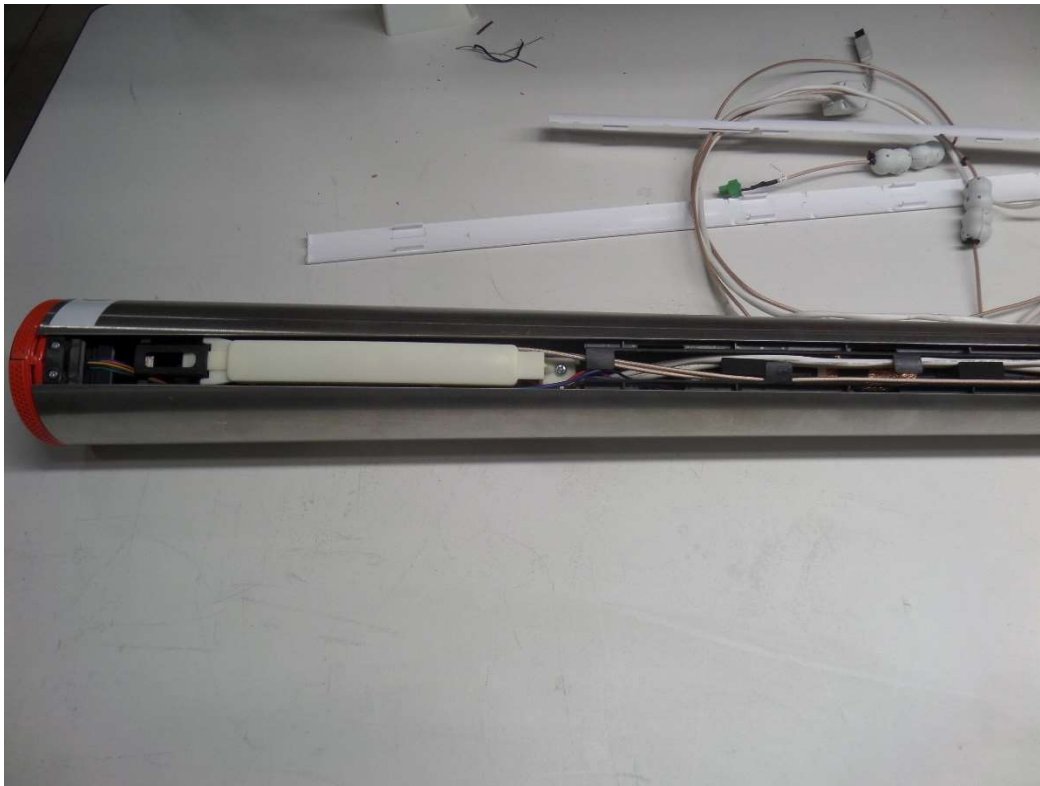


Figure 2: NS40 antenna top section



Figure 3: NS40 antenna middle section



Figure 4: NS40 antenna bottom section



Figure 5: NS40 antenna without the metal housing



Figure 6: NS40 antenna top section showing A1200 matching coupler board



Figure 7: NS40 antenna top section showing SOM module

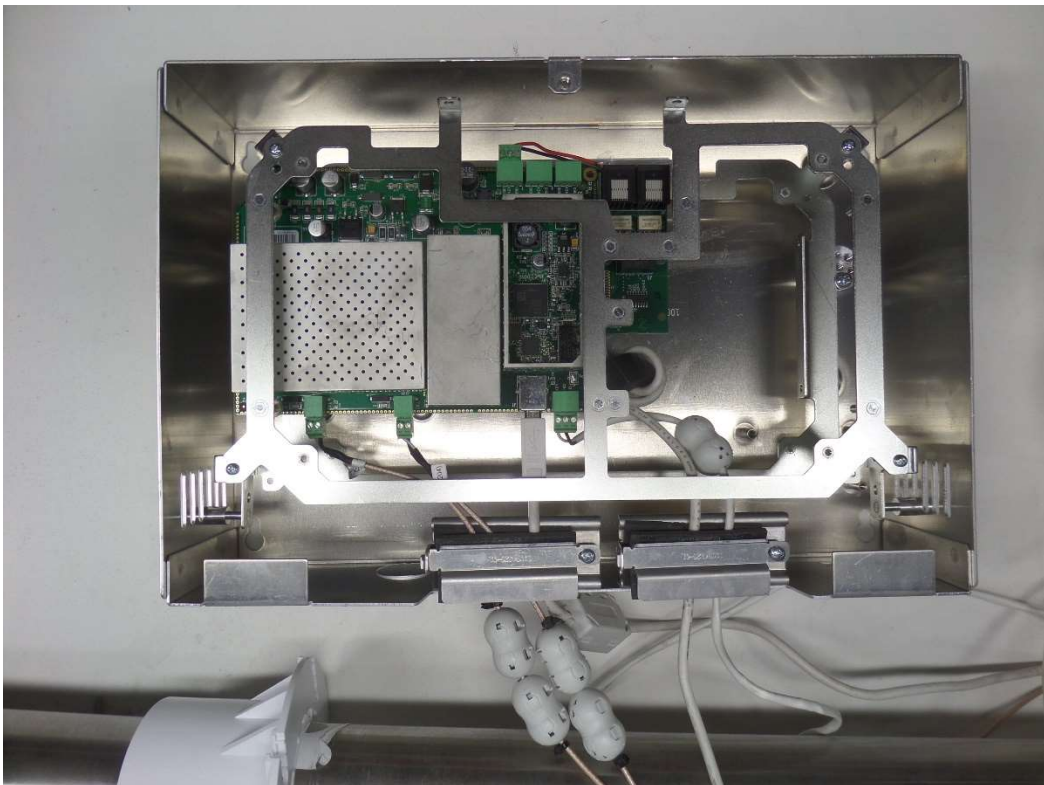


Figure 8: NEO Remote Electronics Enclosure with top cover removed

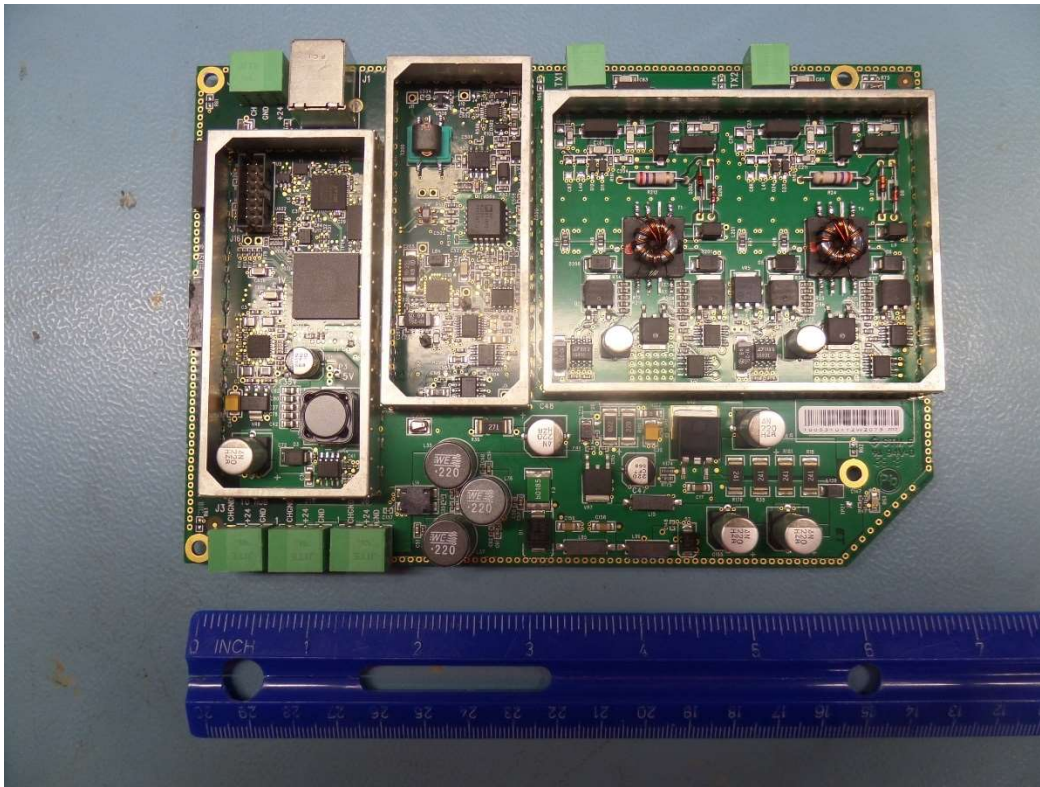


Figure 9: Neo Remote Electronics Enclosure TR4300 EAS RF board top side without shields

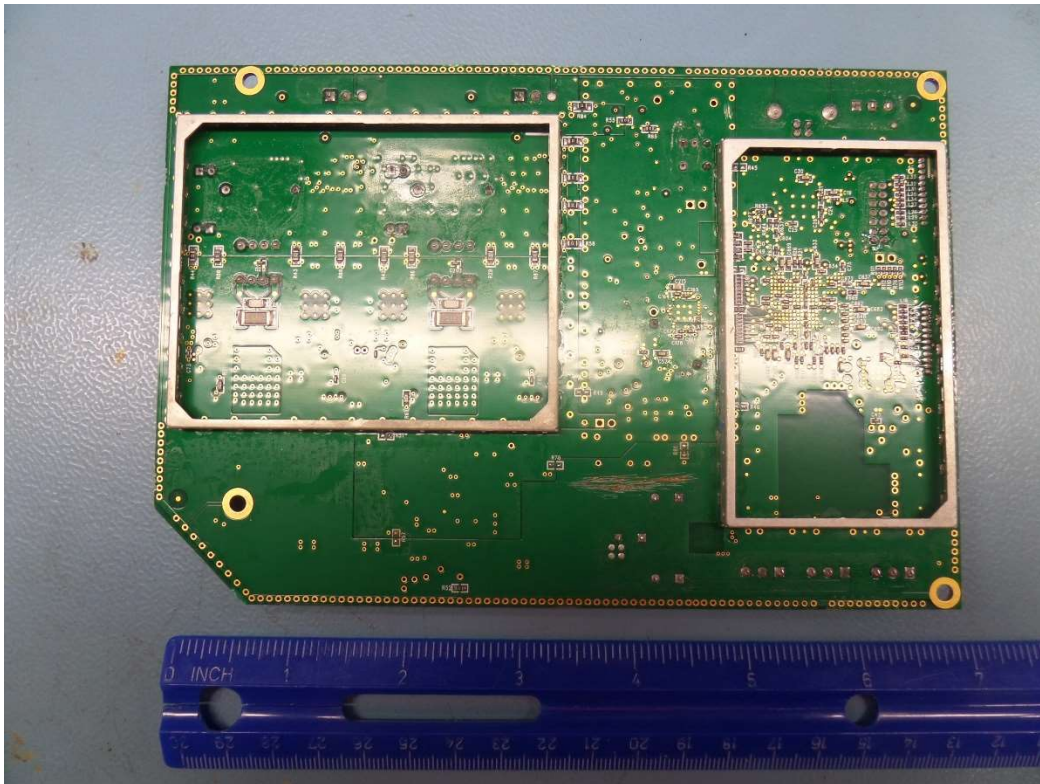


Figure 10: Neo Remote Electronics Enclosure TR4300 EAS RF board bottom side without shields



Figure 11: NS40 antenna A1200 matching coupler board top side



Figure 12: NS40 antenna A1200 matching coupler board bottom side

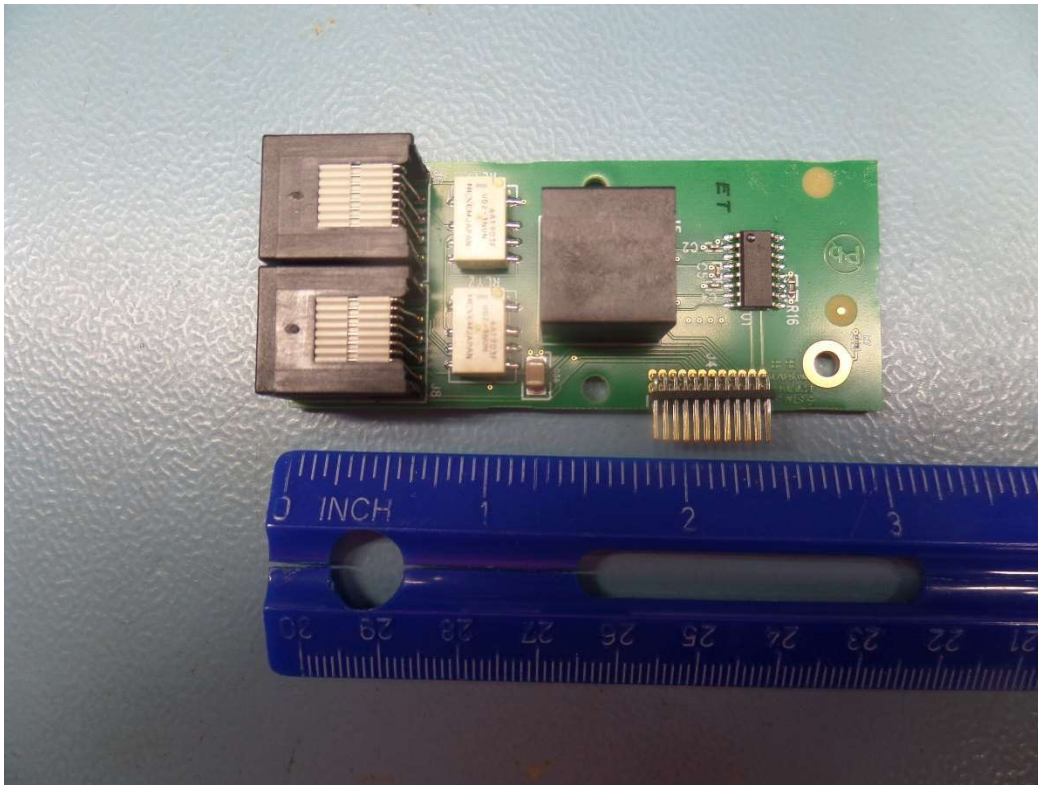


Figure 13: Neo Remote Electronics Enclosure A1203 I/O module top side

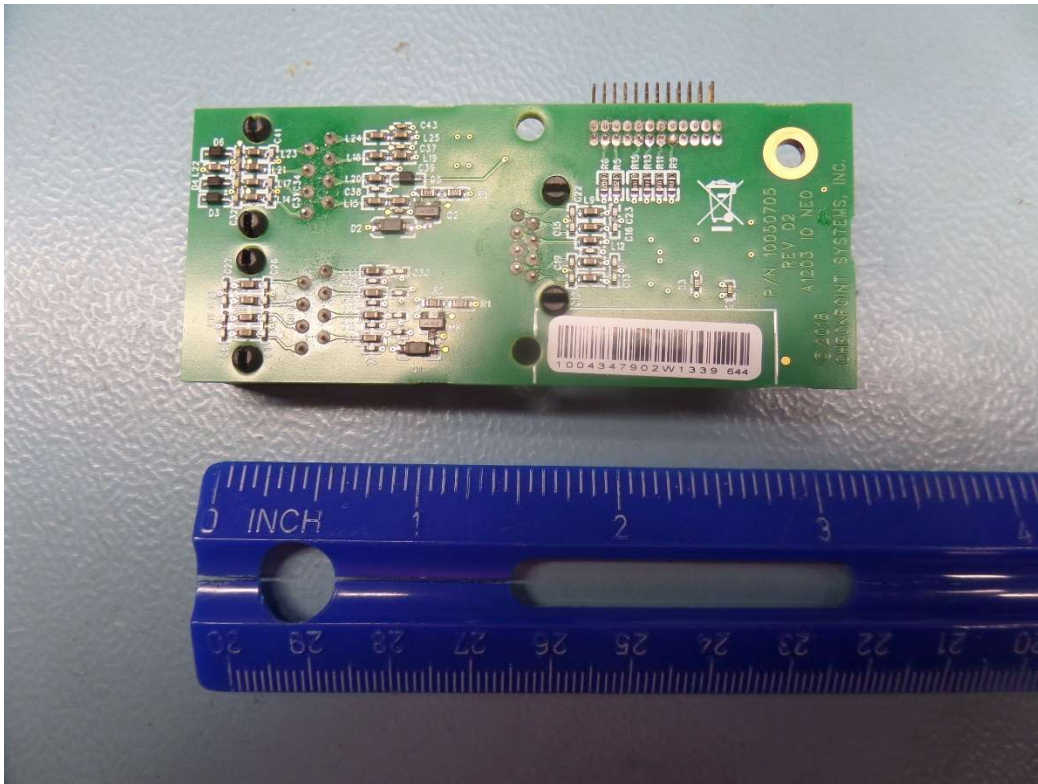


Figure 14: Neo Remote Electronics Enclosure A1203 I/O module bottom side



Figure 15: NS40 antenna SOM module Rock 64 & Light and sounder board top side

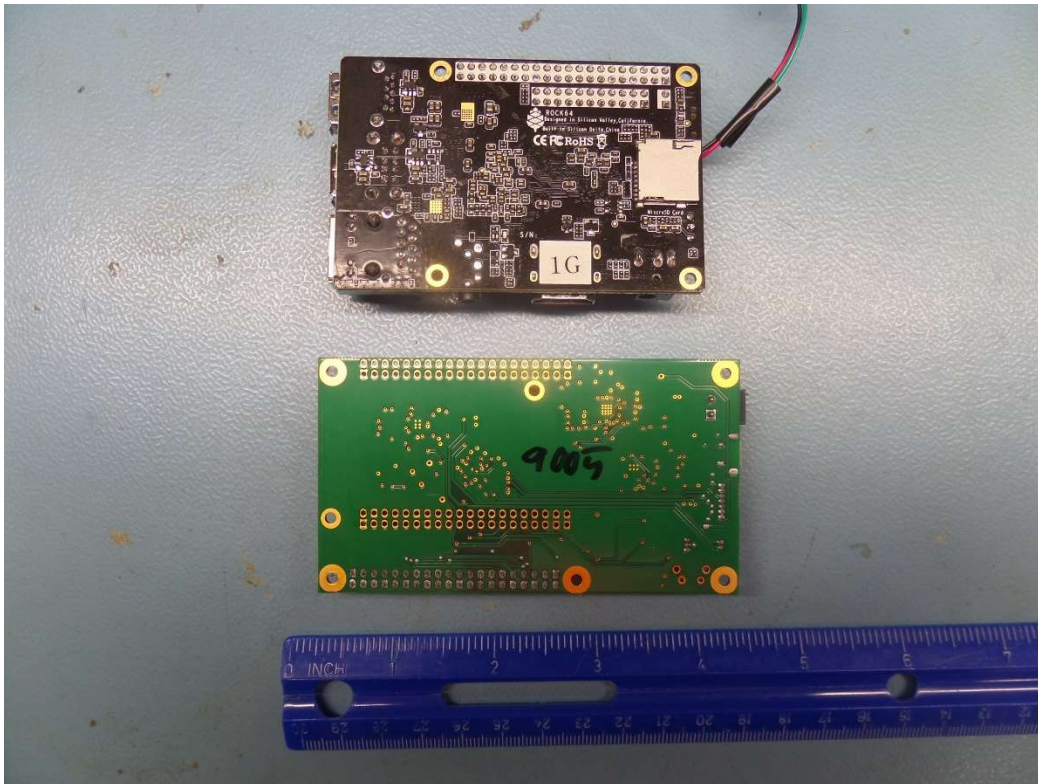


Figure 16: NS40 antenna SOM module Rock 64 & Light and sounder board bottom side



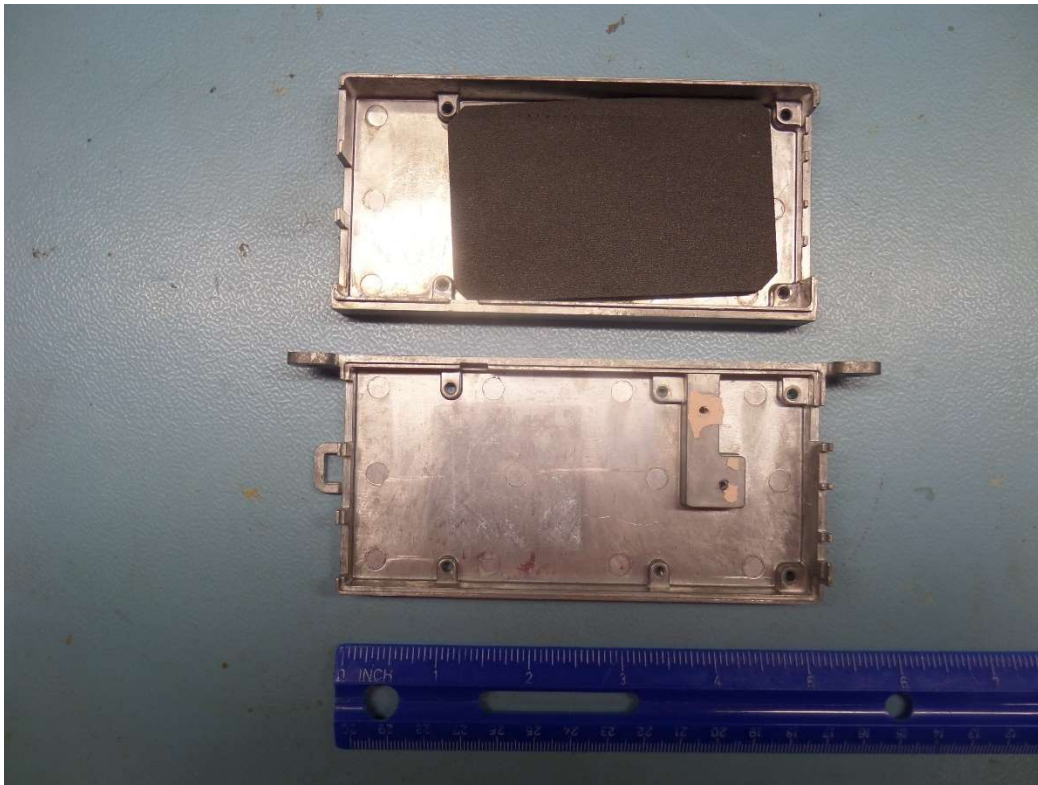


Figure 17: NS40 antenna pedestal SOM Module top and bottom shields



Figure 18: NS40 antenna pedestal A1198 LED board top side



Figure 19: NS40 antenna pedestal A1198 LED board bottom side