



Figure 1: NP22 PRI/PAB/SAB RF ANT FRAME TWO HALVES



Figure 2: NP22 PRI/PAB/SAB RF ANT FRAME BACK SIDE



Figure 3: NP22 PRI/PAB/SAB RF ANT FRAME FRONT SIDE

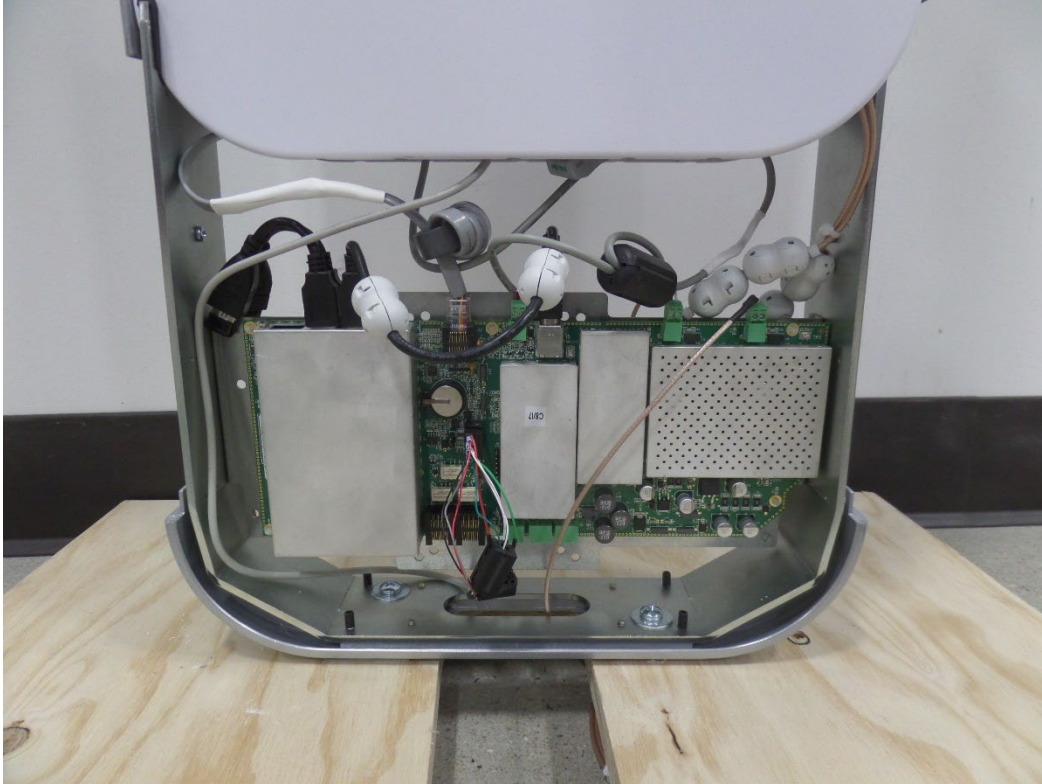


Figure 4: NP22 PRI/PAB LOWER BASE FRONT SIDE

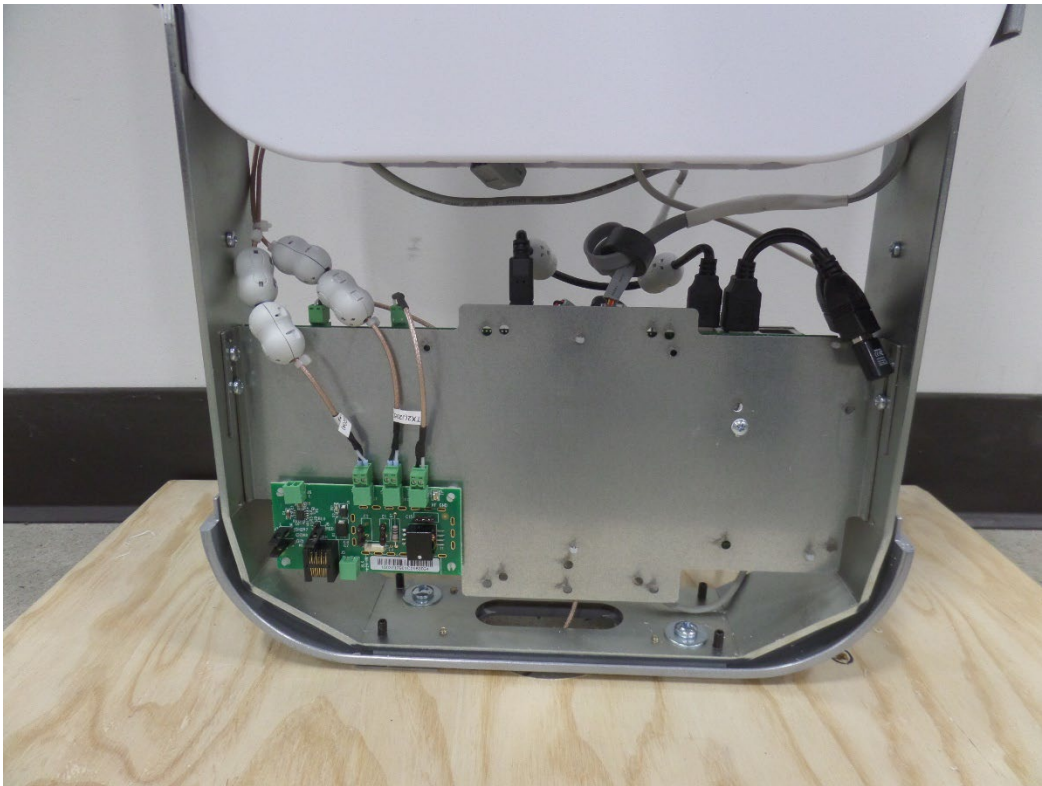


Figure 5: NP22 PRI/PAB LOWER BASE BACK SIDE

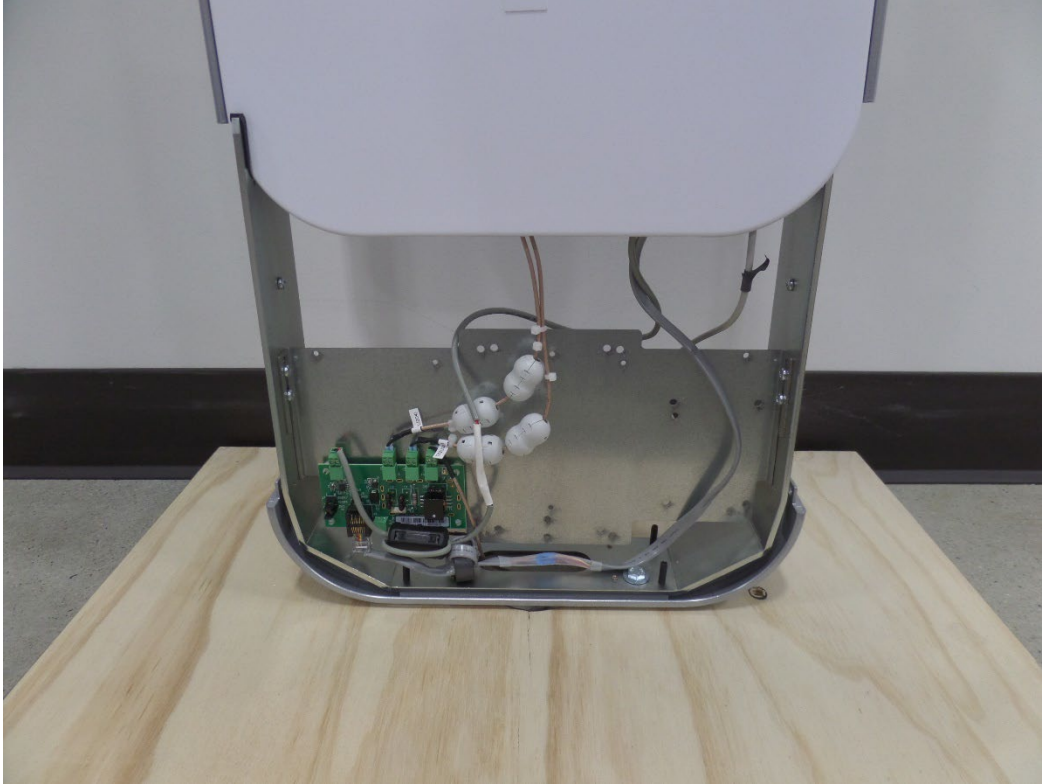


Figure 6: NP22 SAB LOWER BASE

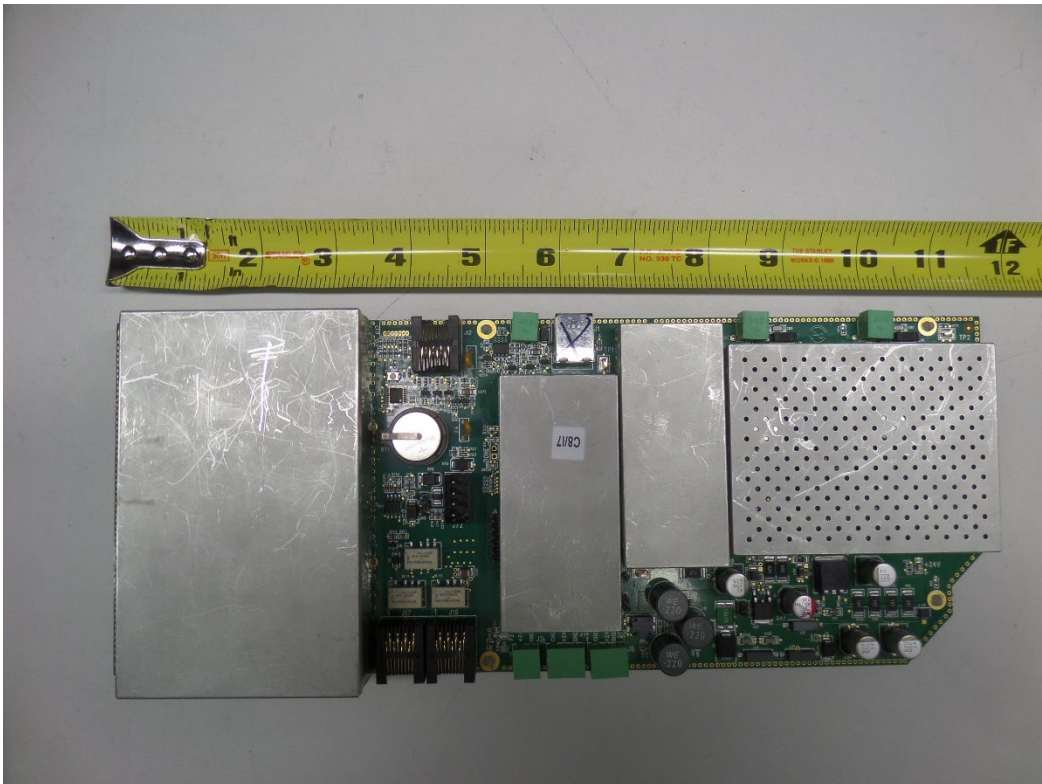


Figure 7: NP22 PRI/PAB LOWER BASE EAS RF BOARD TOP SIDE

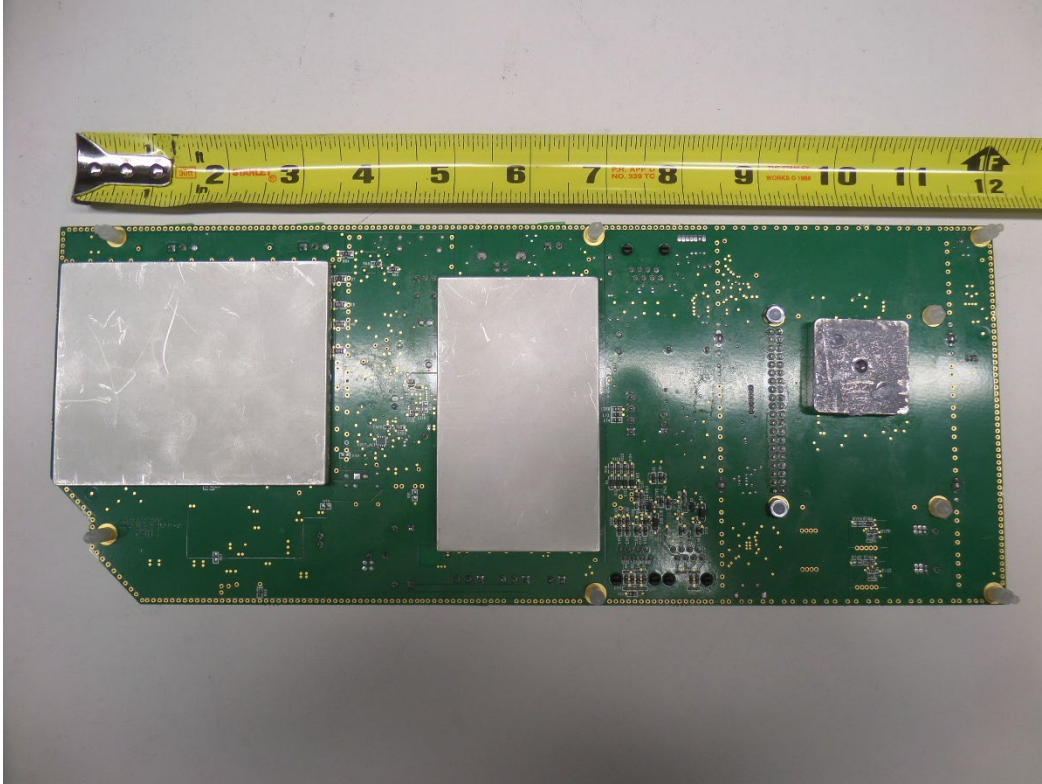


Figure 8: NP22 PRI/PAB LOWER BASE EAS RF BOARD BOTTOM SIDE

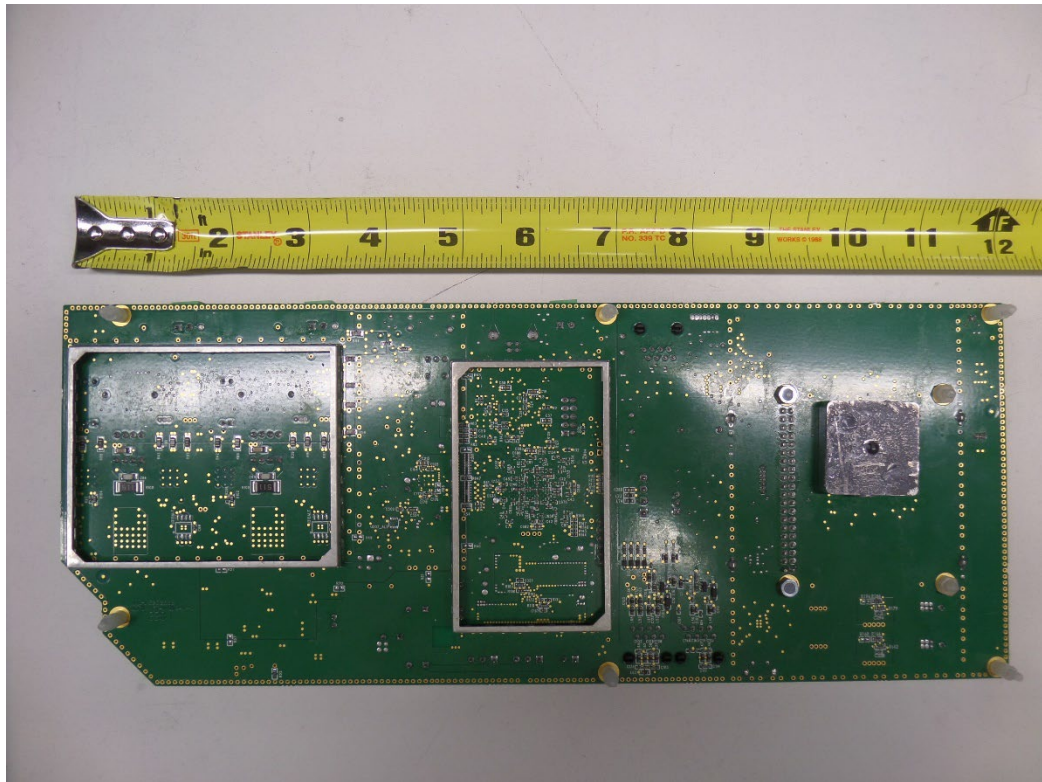


Figure 9: NP22 PRI/PAB LOWER BASE EAS RF BOARD BOTTOM SIDE WITHOUT SHIELDS

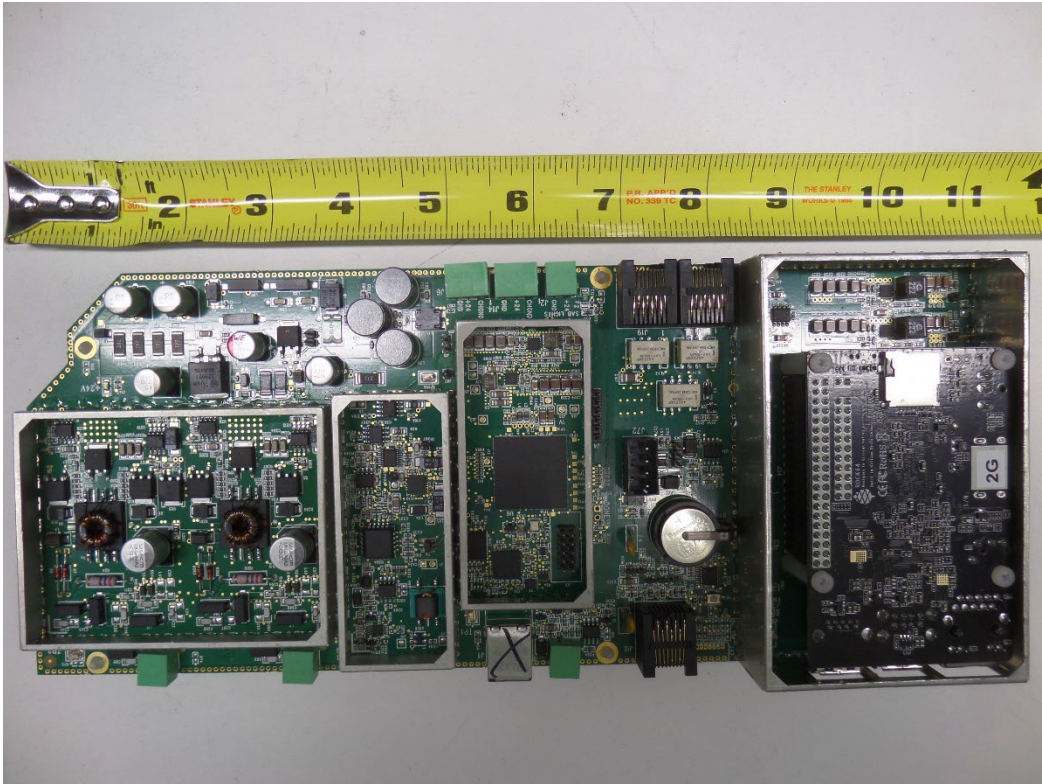


Figure 10: NP22 PRI/PAB LOWER BASE EAS RF BOARD TOP SIDE WITHOUT SHIELDS

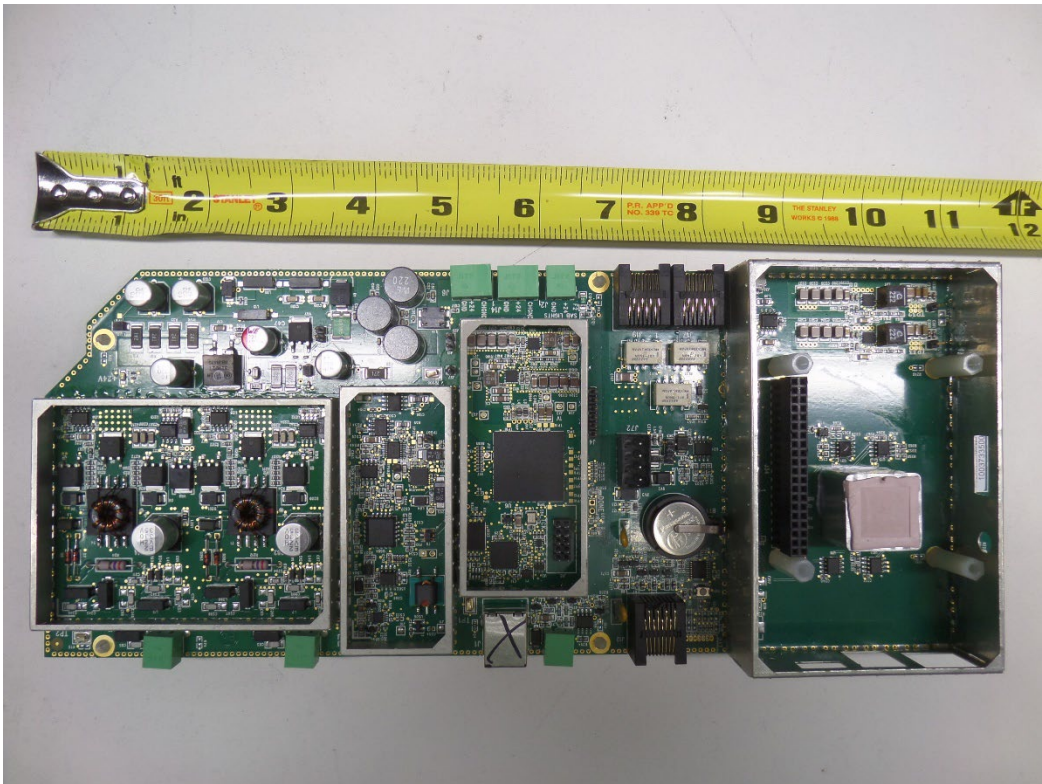


Figure 11: NP22 PRI/PAB LOWER BASE EAS RF BOARD TOP SIDE ROCK64 BOARD REMOVED

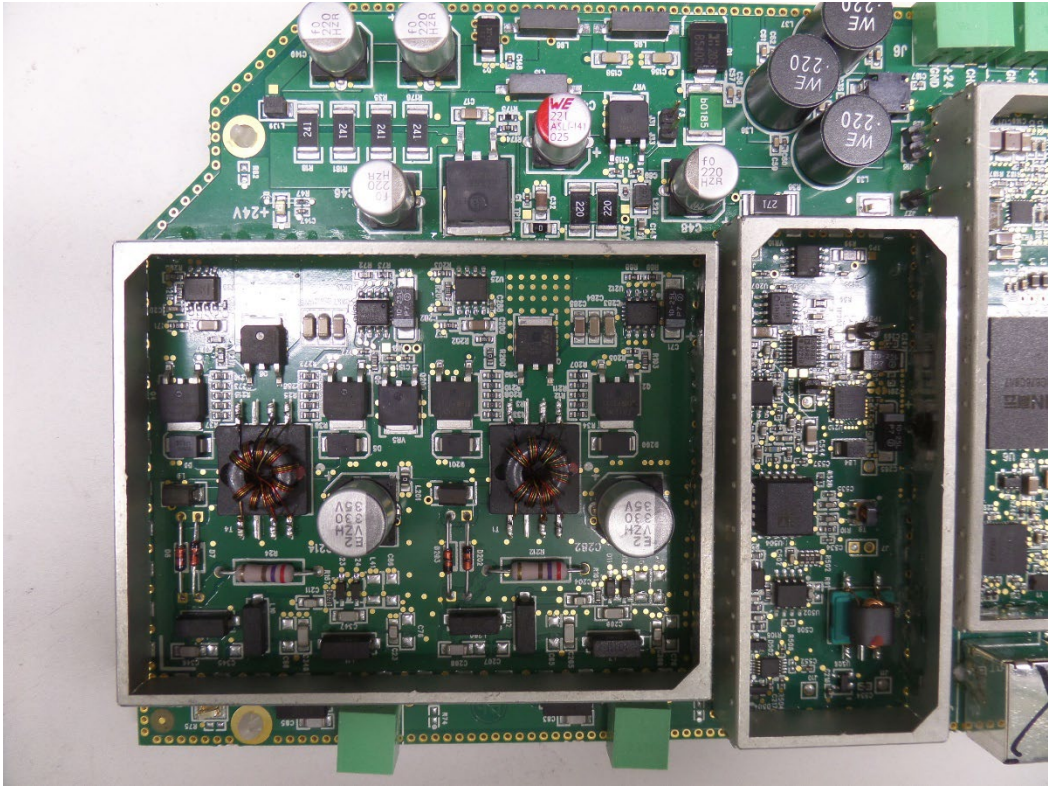


Figure 12: NP22 PRI/PAB LOWER BASE EAS RF BOARD TOP SIDE RF SECTION

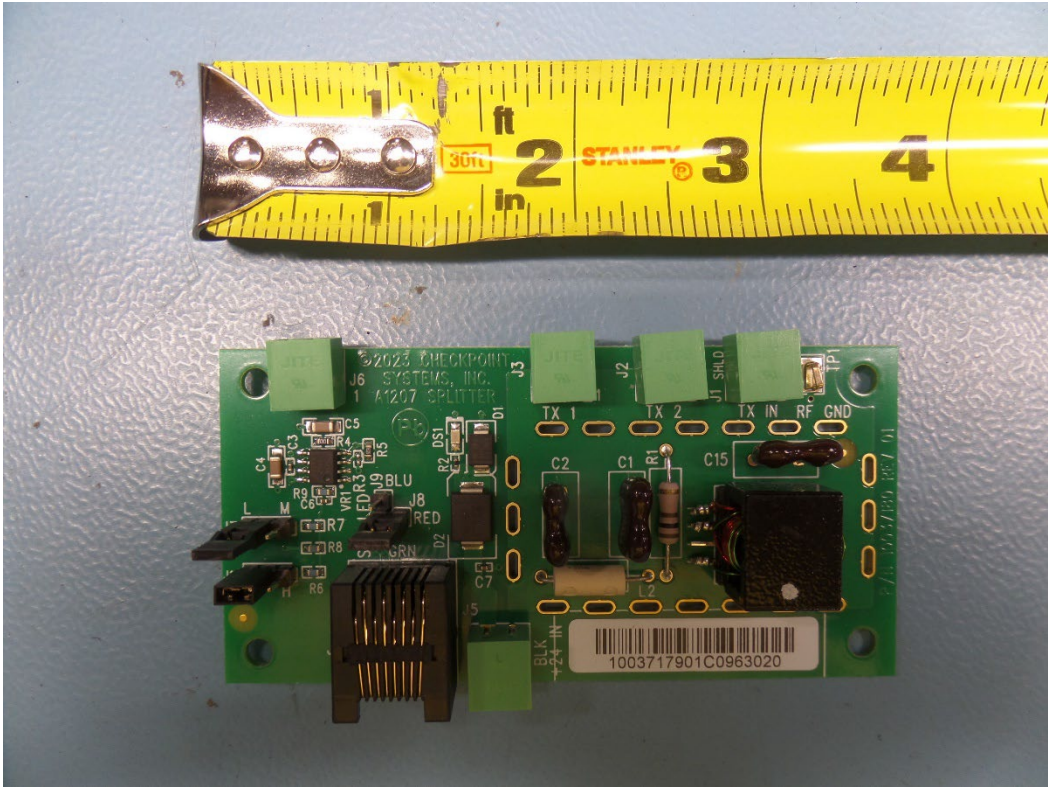


Figure 13: NP22 PRI/PAB, NP22 SAB SPLITTER BOARD TOP SIDE



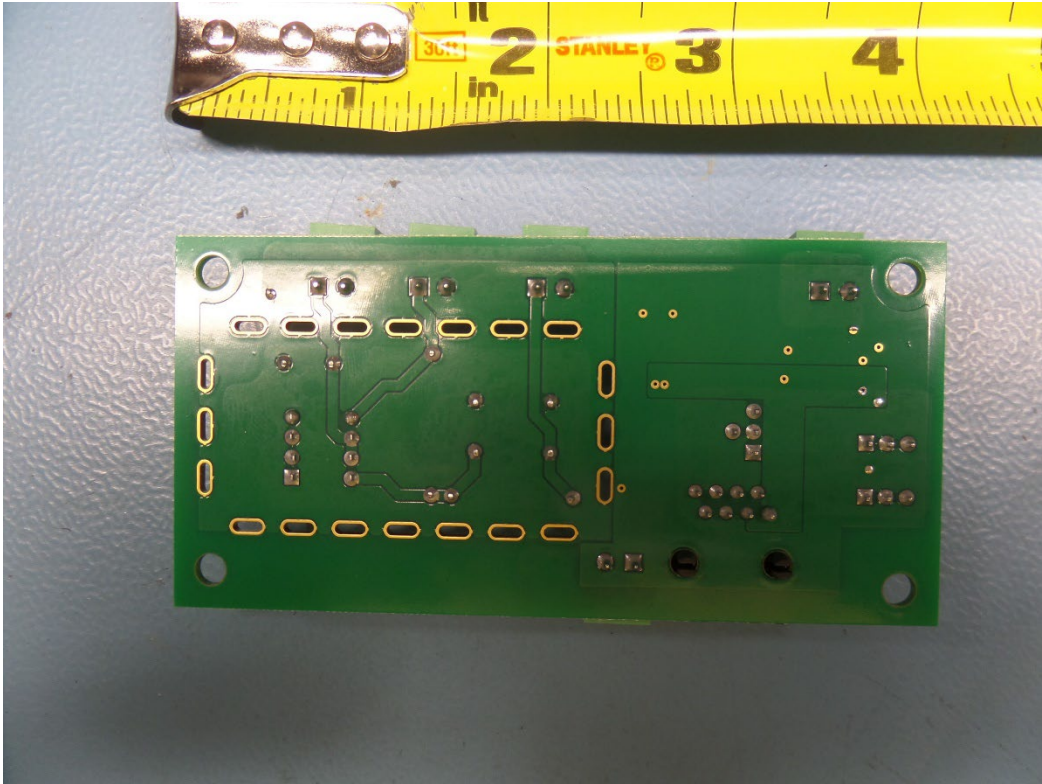


Figure 14: NP22 PRI/PAB/SAB RF ANT FRAME LED BOARD BOTTOM SIDE

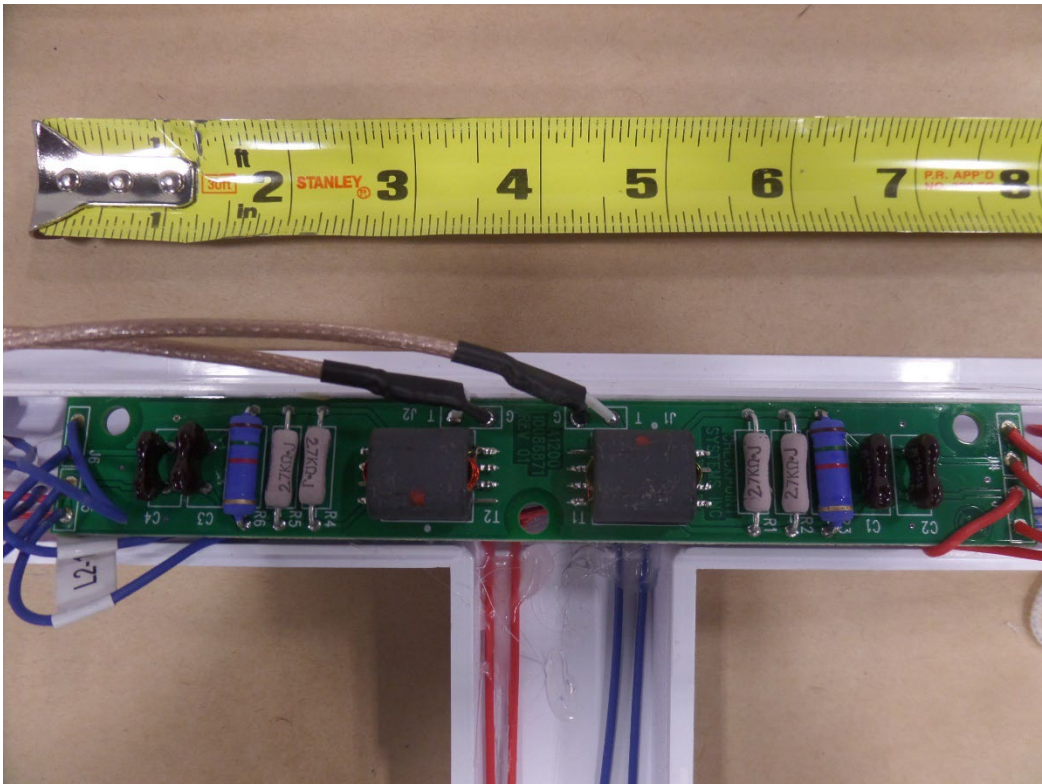


Figure 15: NP22 PRI/PAB/SAB RF ANT FRAME MATCHING BOARD TOP SIDE

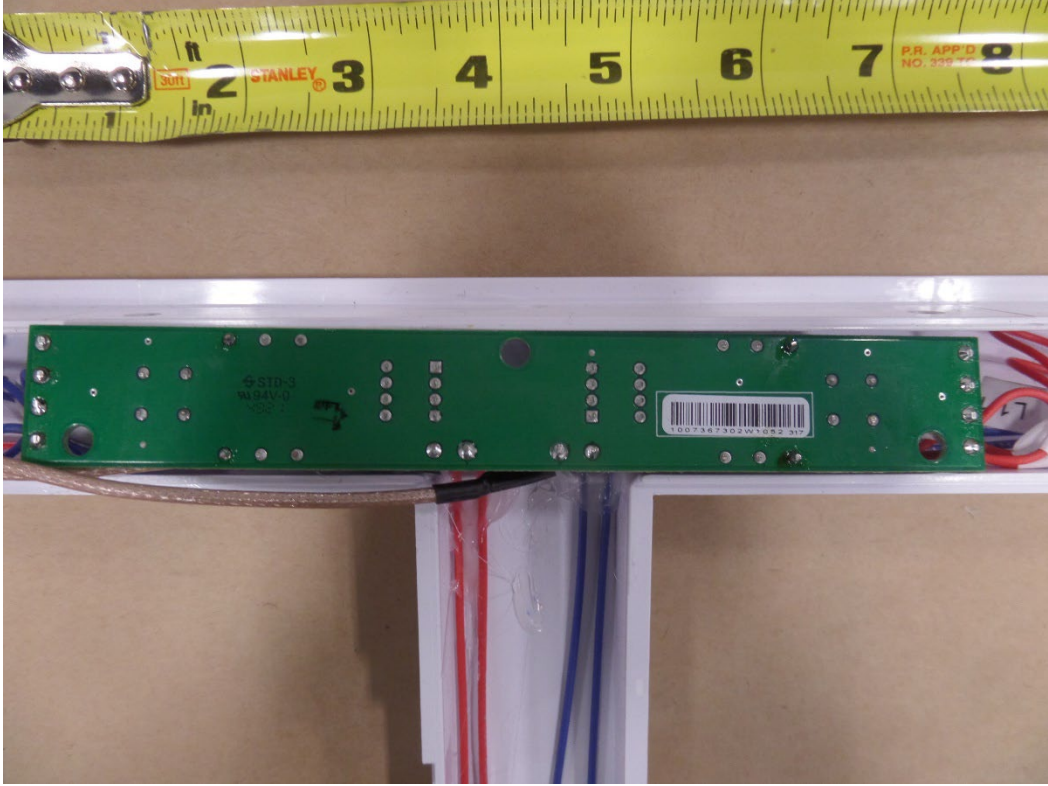


Figure 16: NP22 PRI/PAB/SAB RF ANT FRAME MATCHING BOARD BOTTOM SIDE

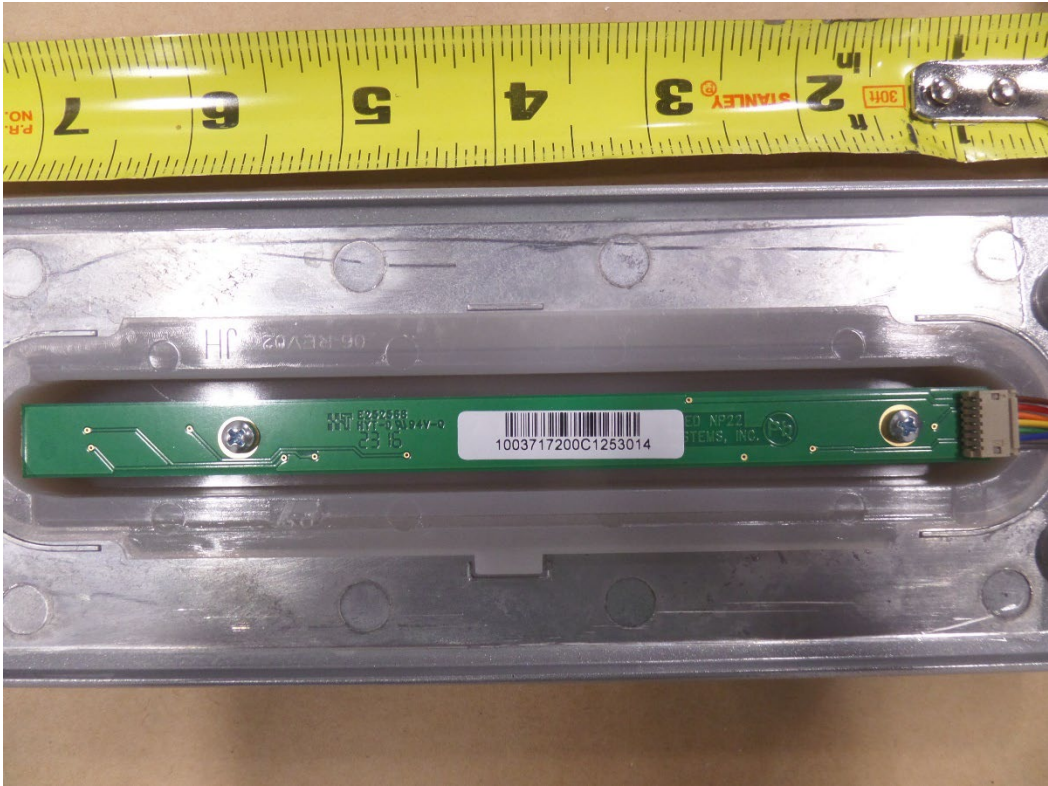


Figure 17: NP22 PRI/PAB/SAB RF ANT FRAME LED BOARD BOTTOM SIDE

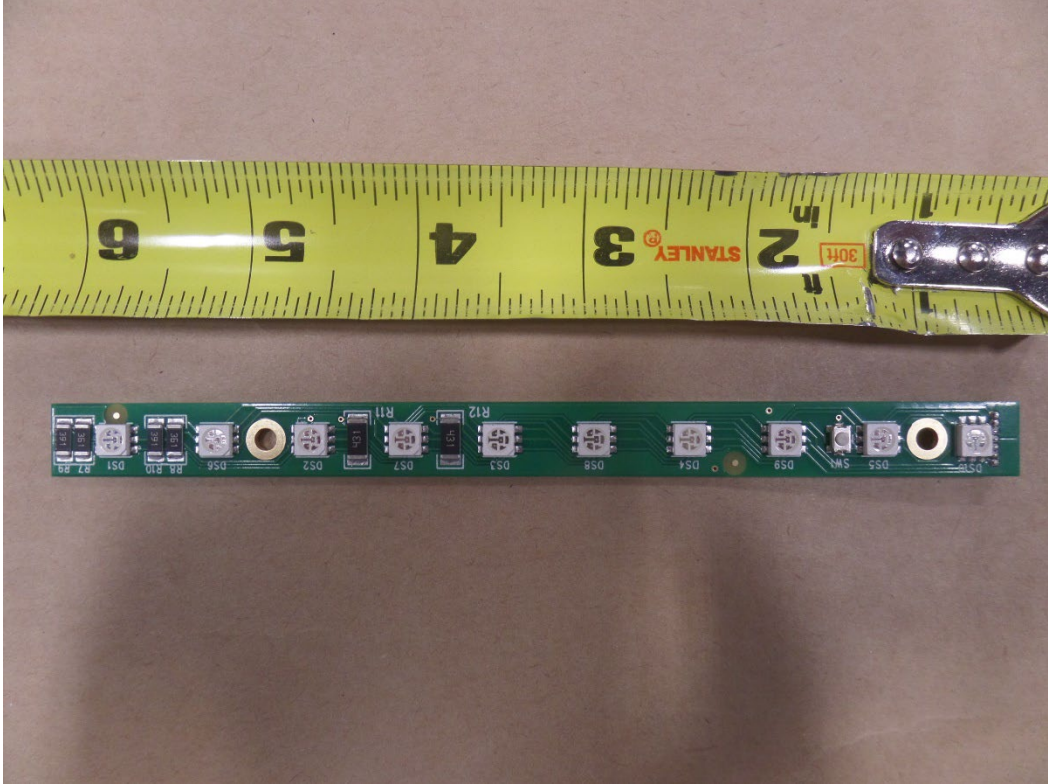


Figure 18: NP22 PRI/PAB/SAB RF ANT FRAME LED BOARD TOP SIDE

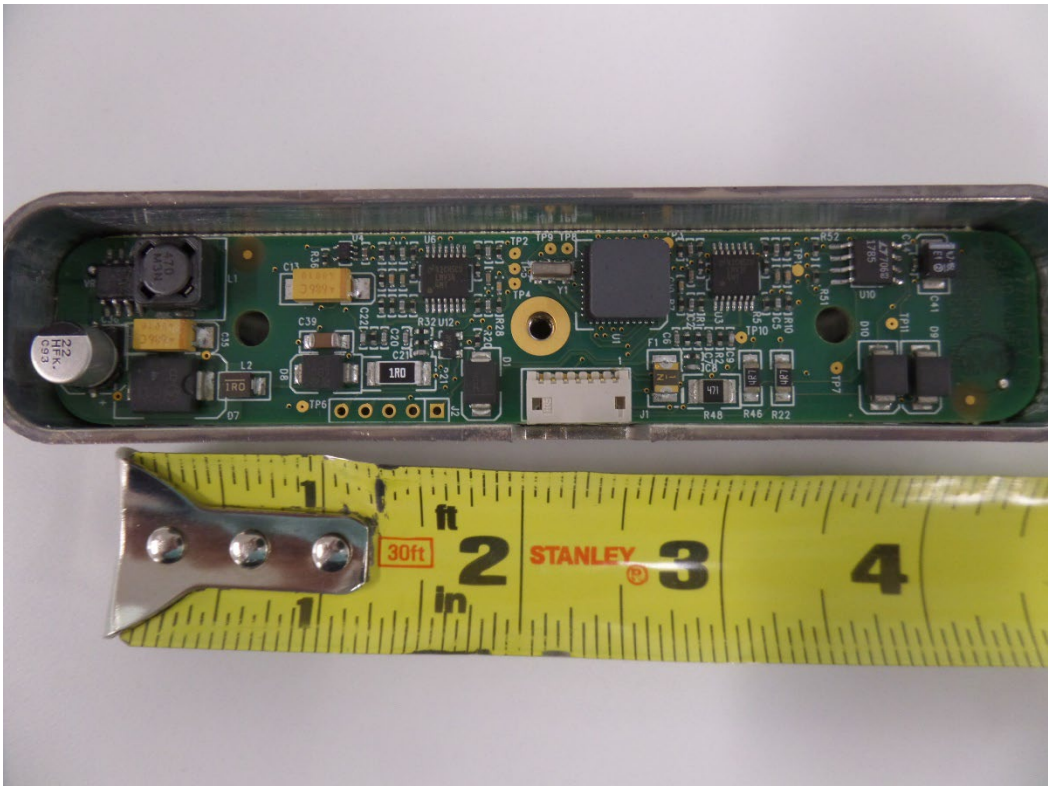


Figure 19: NP22 PRI/PAB/SAB RF ANT FRAME VISIPLUS BOARD TOP SIDE

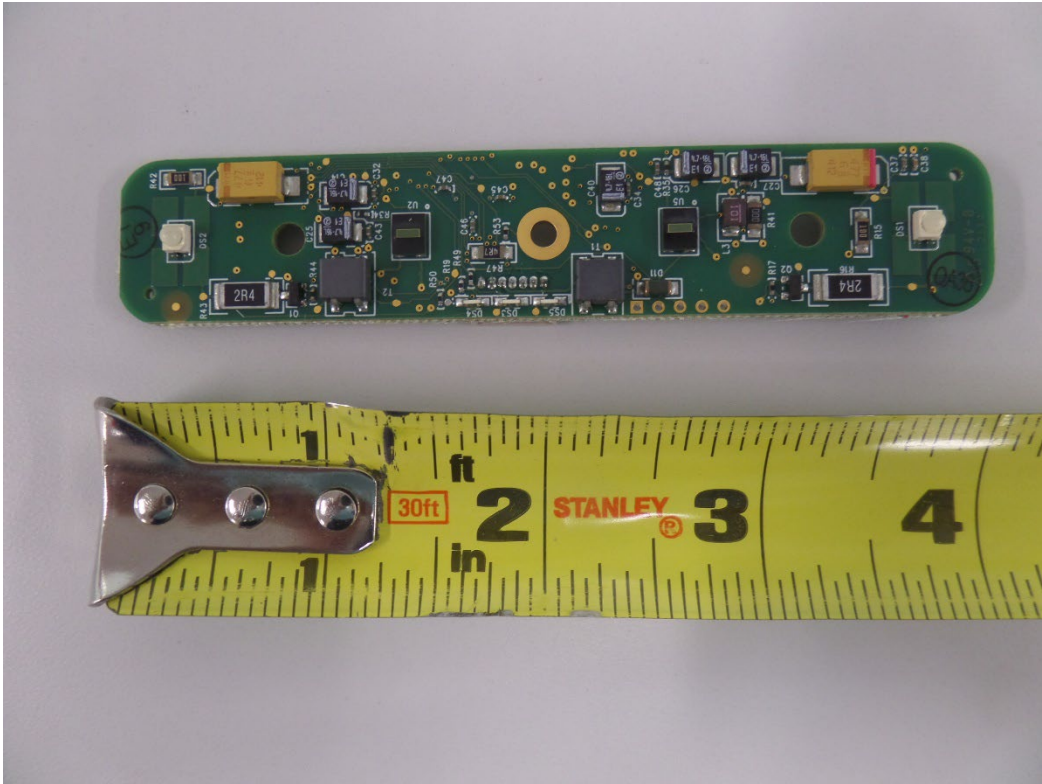


Figure 20: NP22 PRI/PAB/SAB RF ANT FRAME VISIPLUS BOARD BOTTOM SIDE

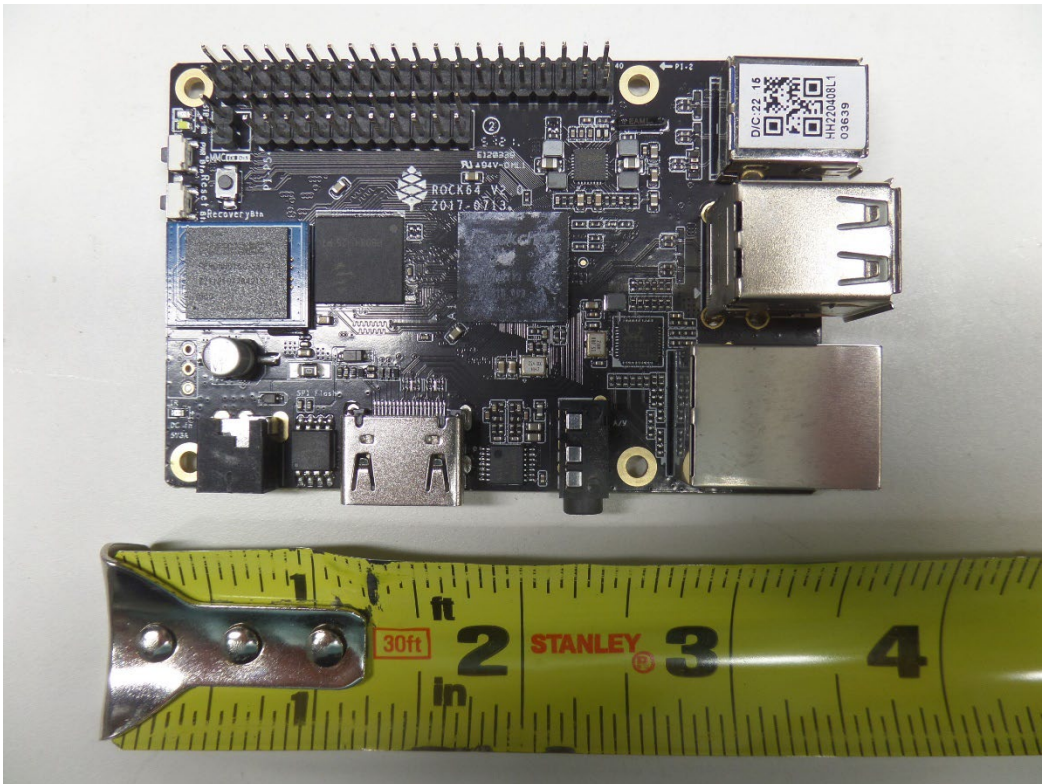


Figure 21: NP22 PRI/PAB LOWER BASE ROCK 64 BOARD TOP SIDE

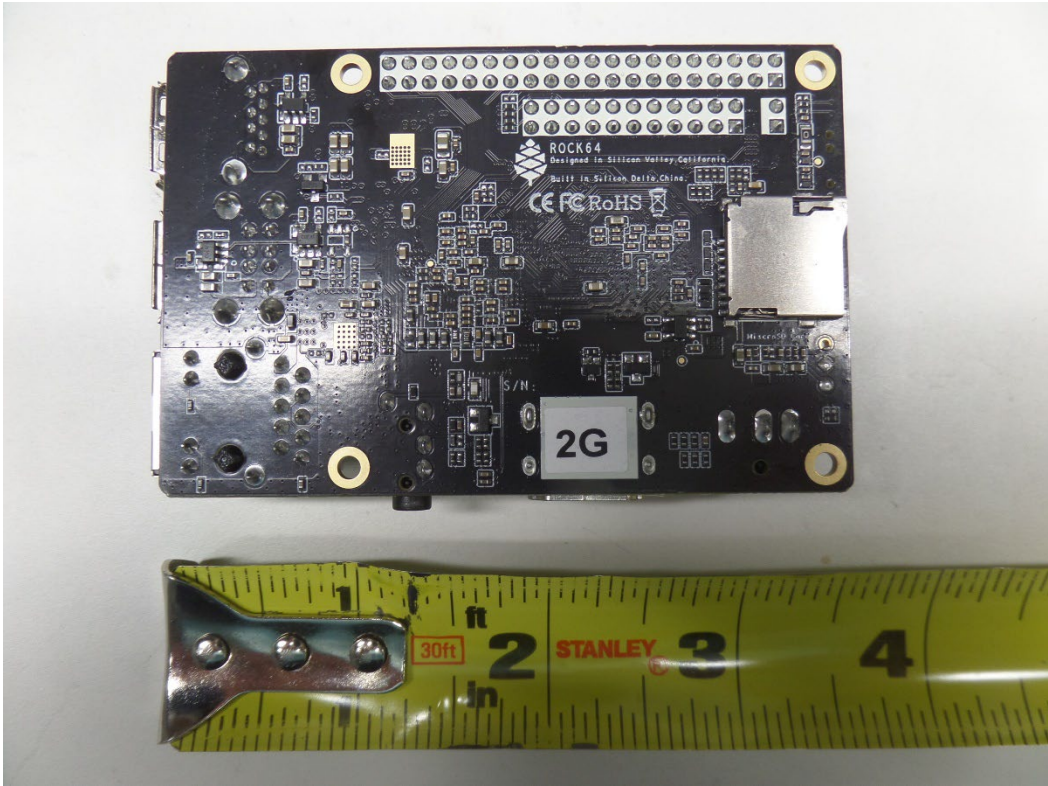


Figure 22: NP22 PRI/PAB LOWER BASE ROCK 64 BOARD BOTTOM SIDE