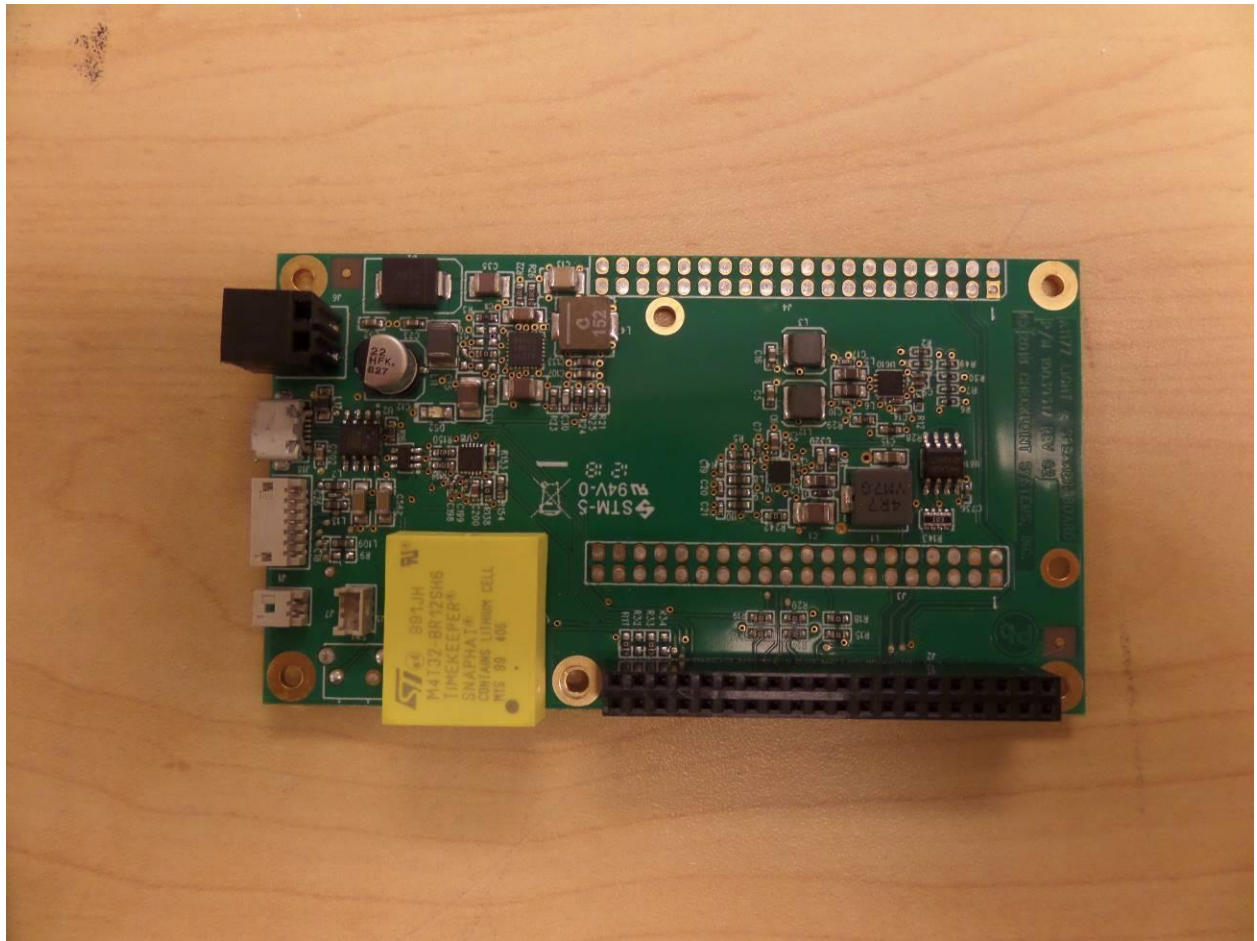
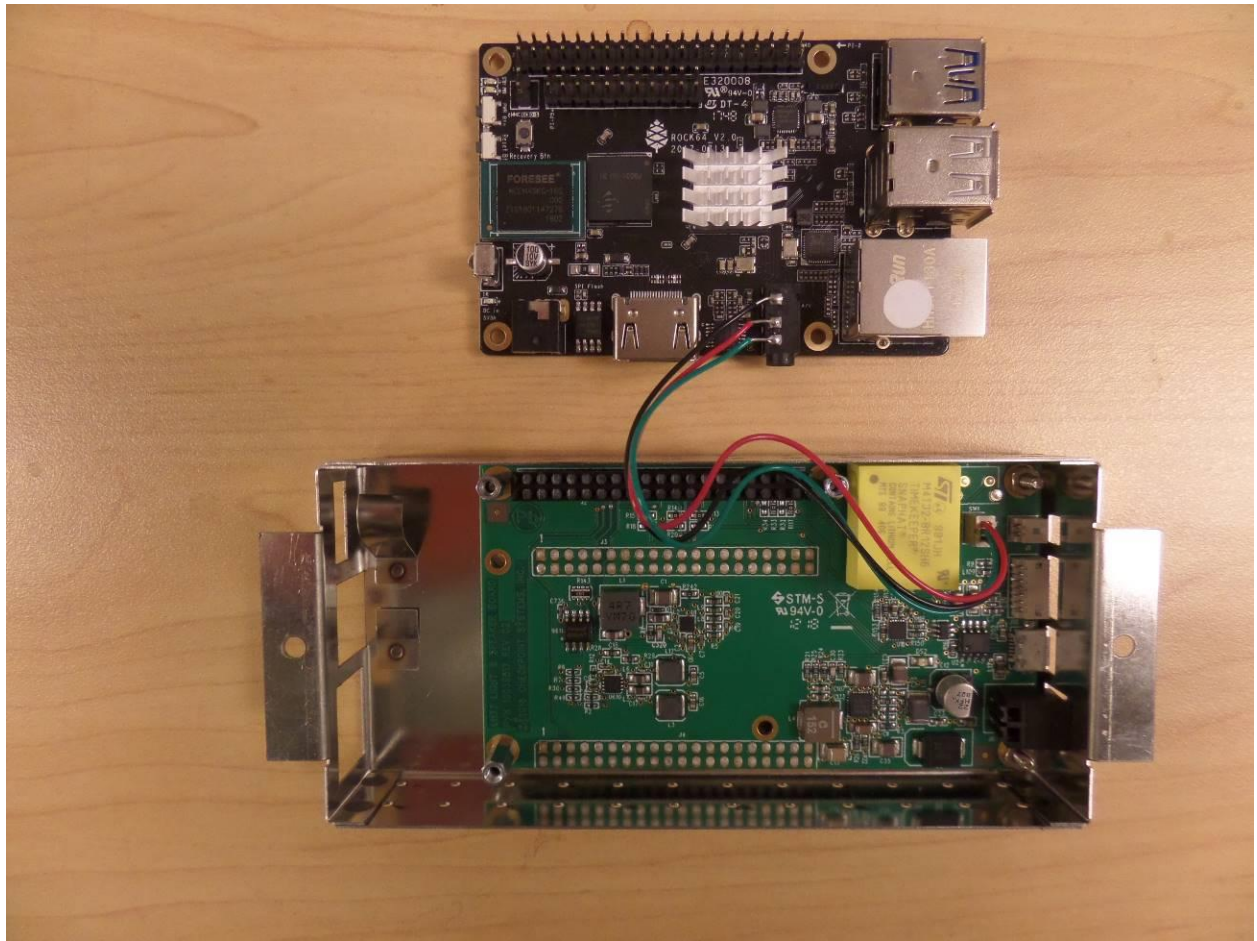


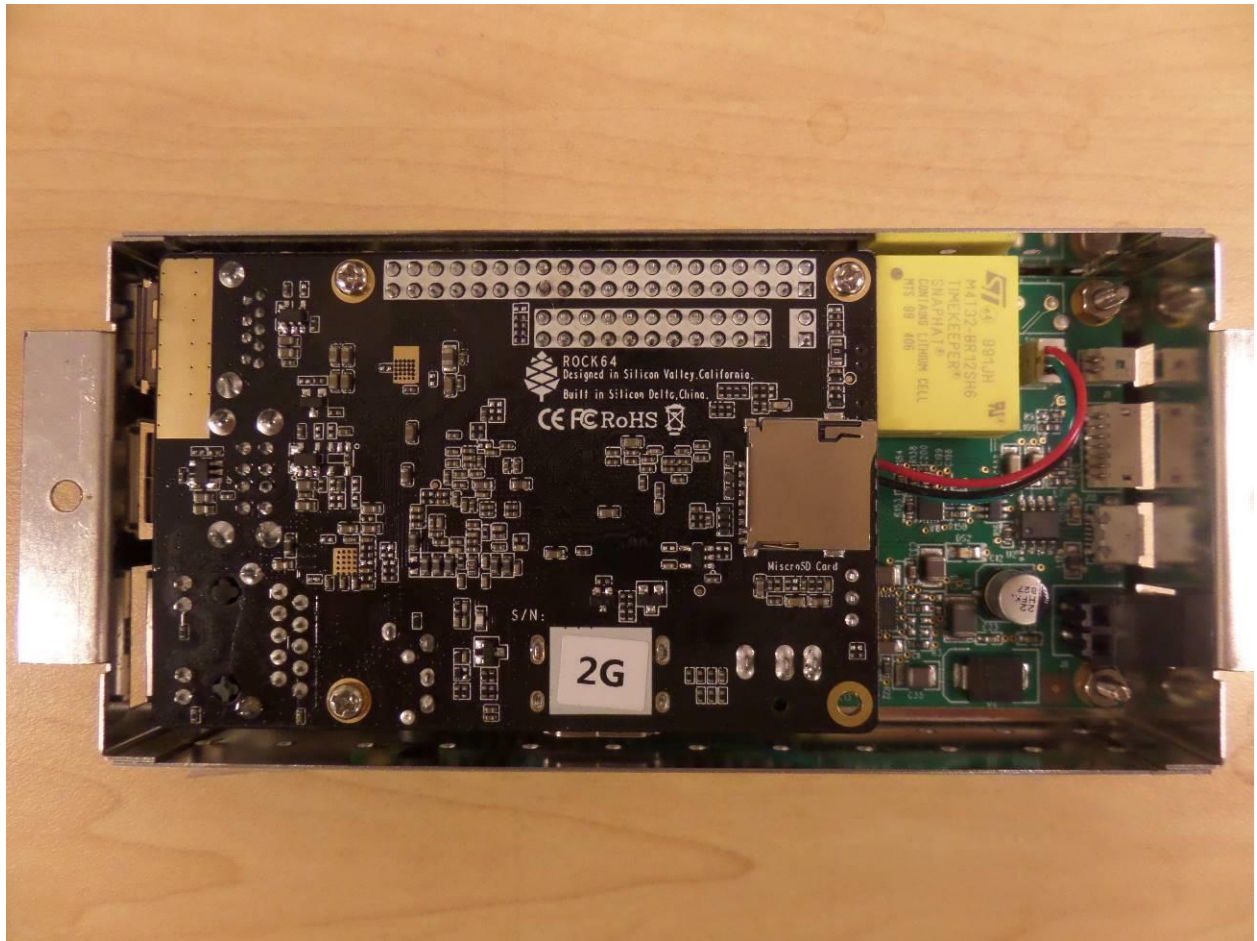
Photograph 1. A1177 Light& speaker board bottom side



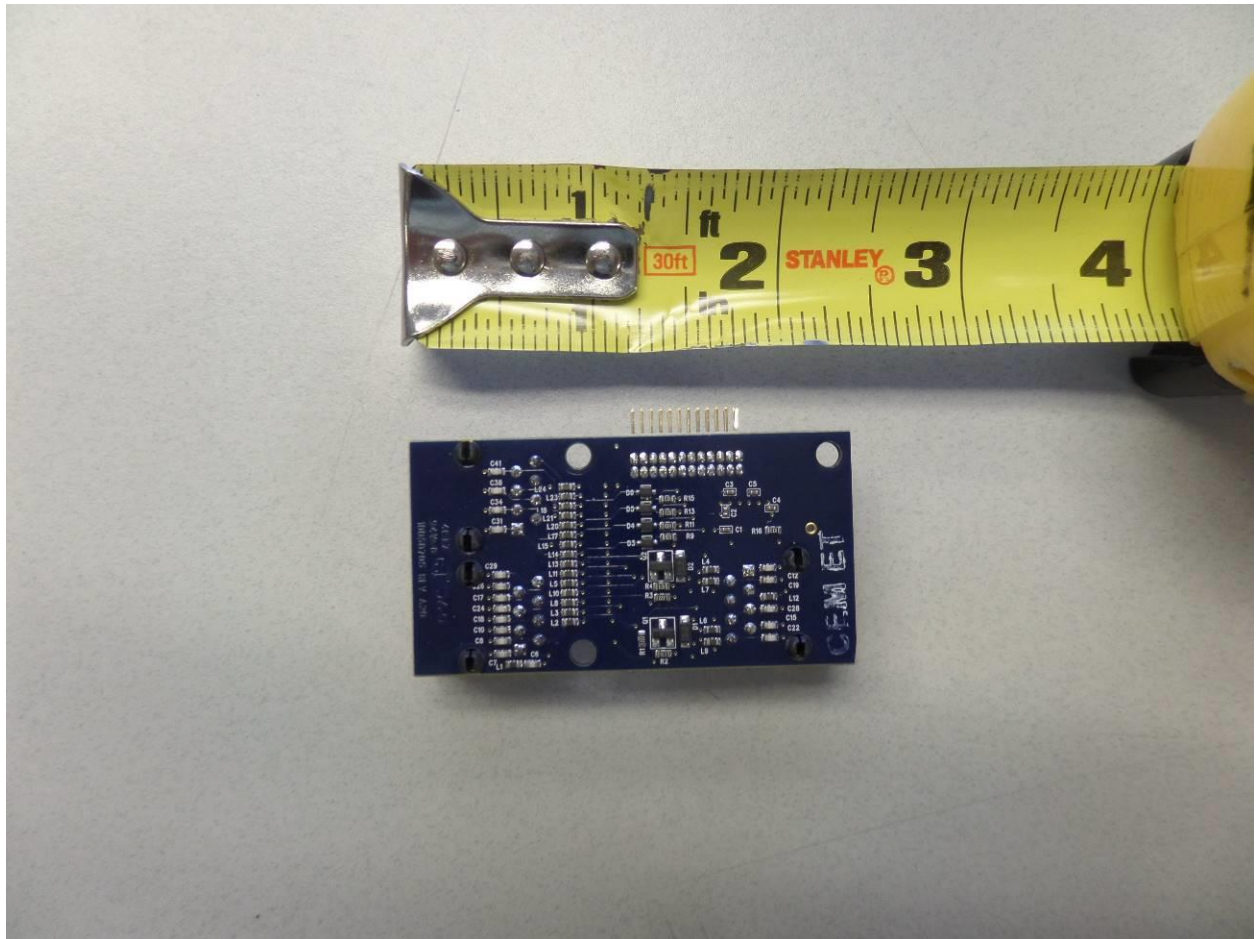
Photograph 2. A1177 Light& speaker board top side



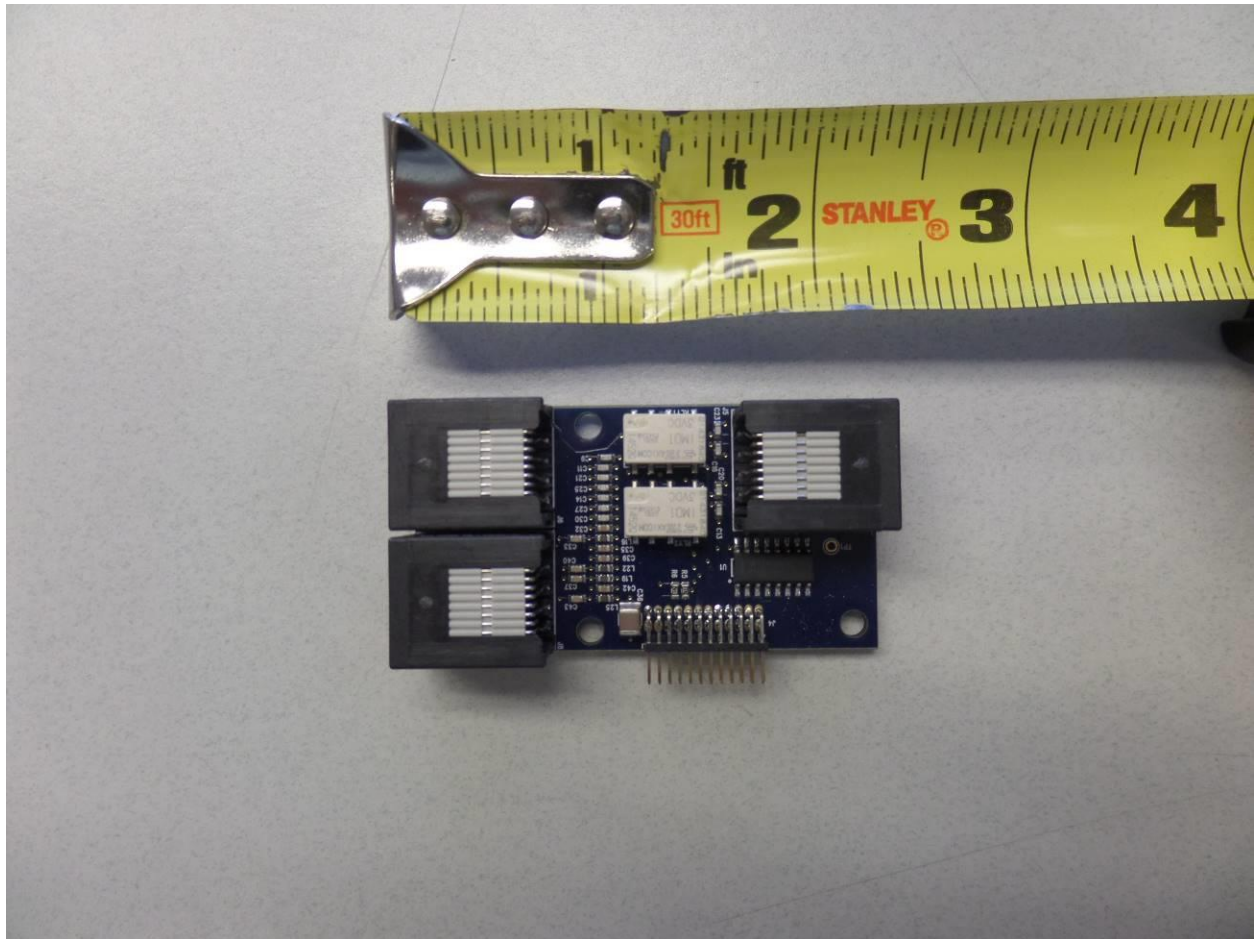
Photograph 3. A1177 It&spkr Rock64 boards split view



Photograph 4. A1177 Lt&spkr Rock64 boards



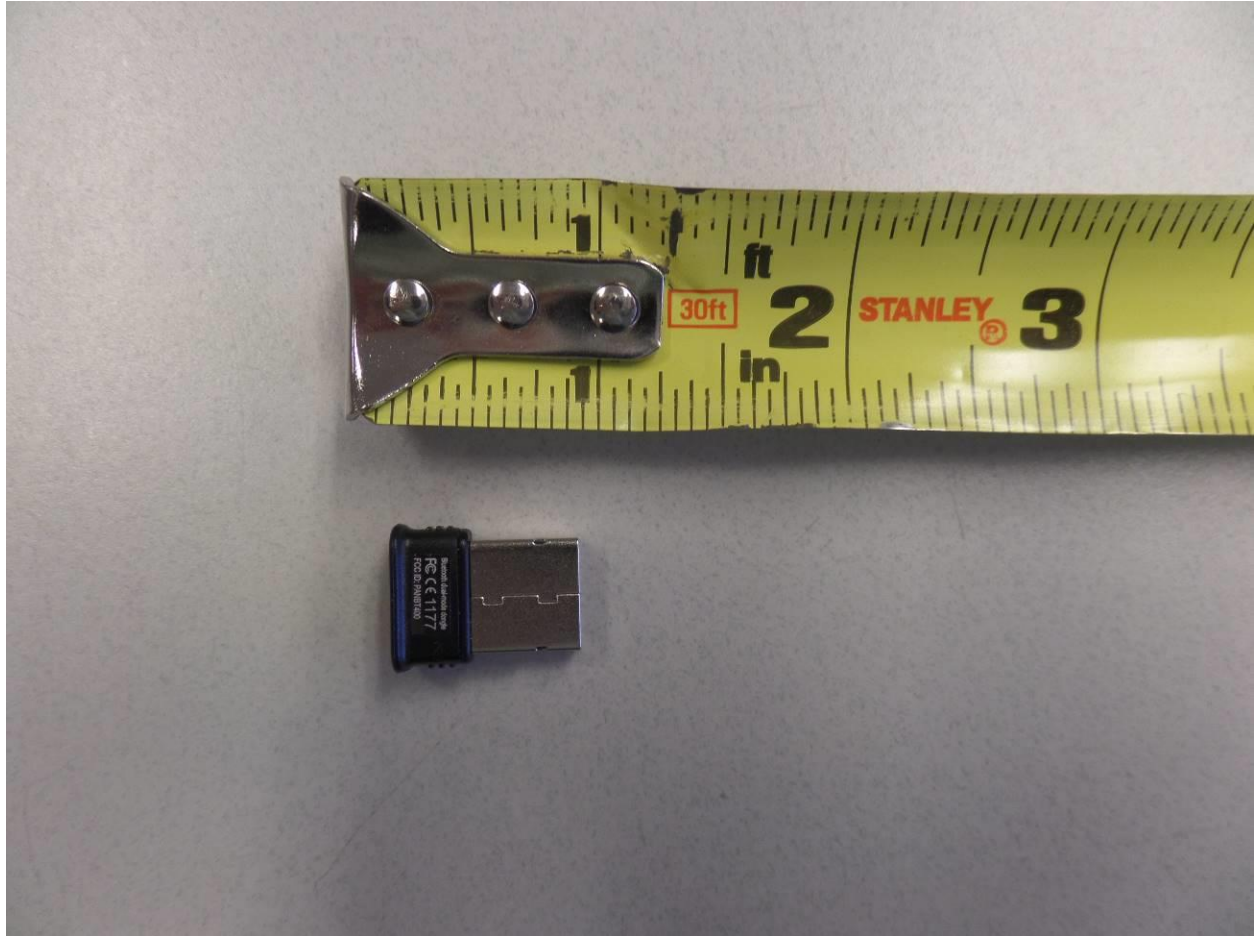
Photograph 5. A1203 IO Module bottom side



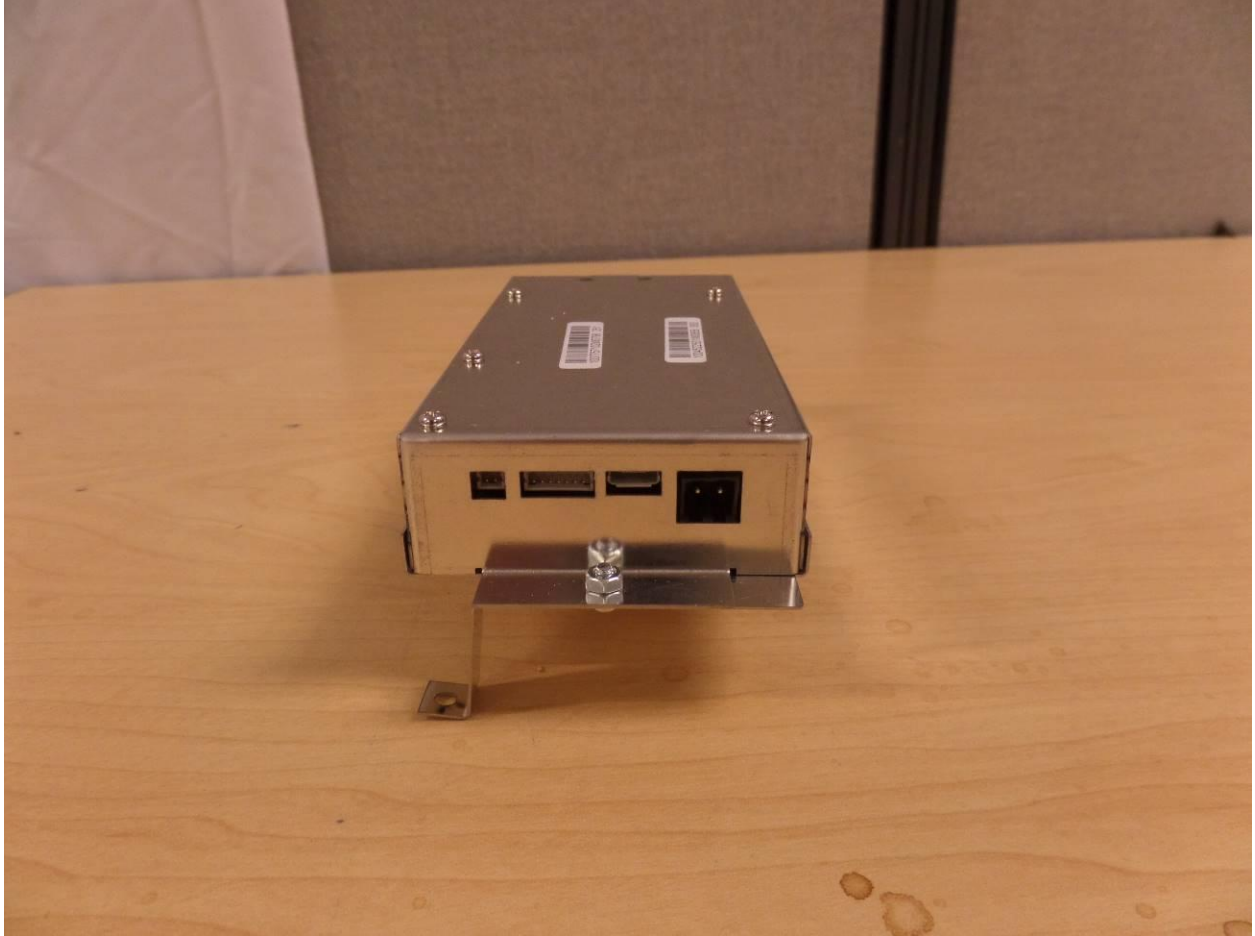
Photograph 6. A1203 IO Module top side



Photograph 7. Bluetooth dongle bottom side



Photograph 8. Bluetooth dongle top side



Photograph 9. Enclosure Rock64 LtSnd back side



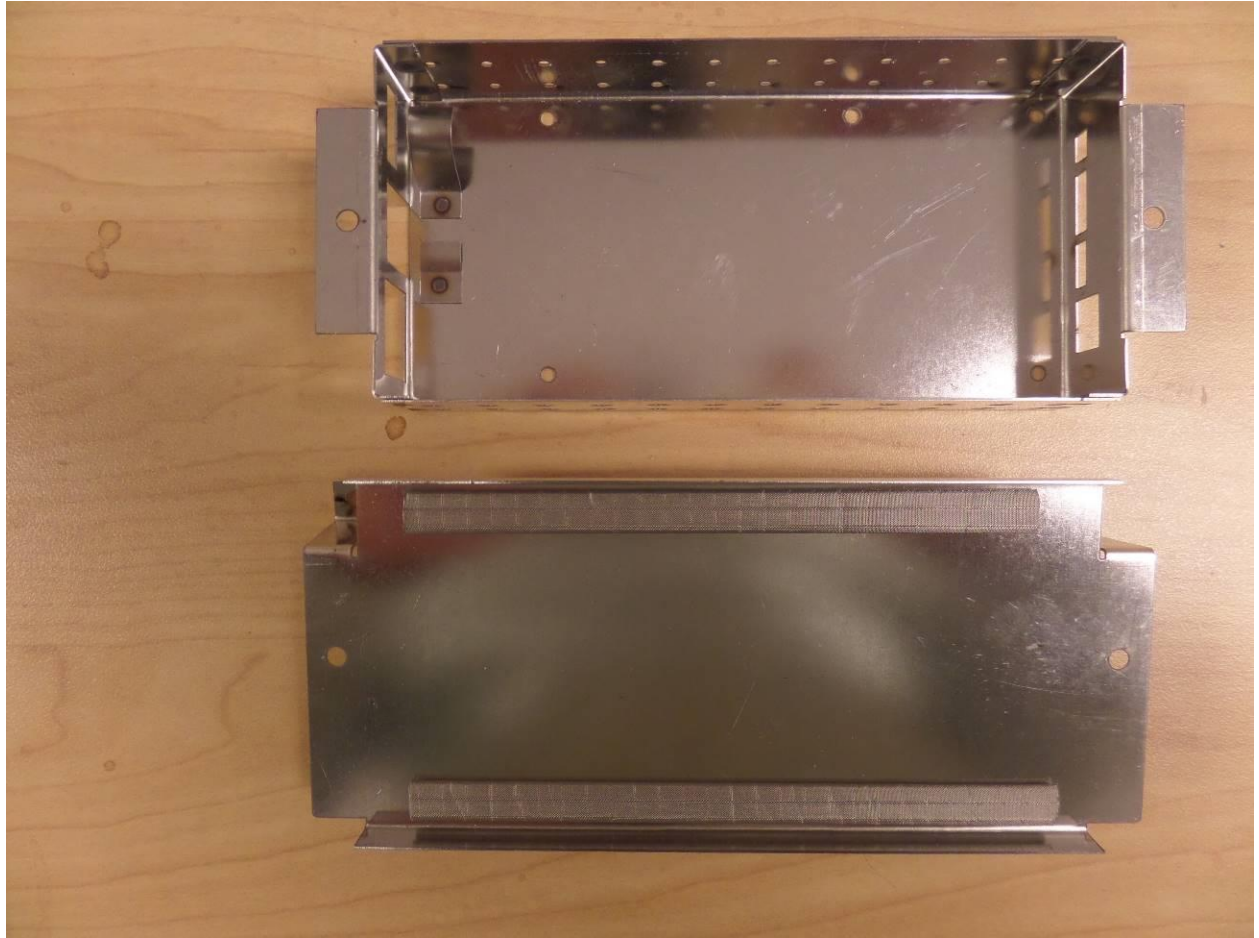
Photograph 10. Enclosure Rock64 LtSnd front side



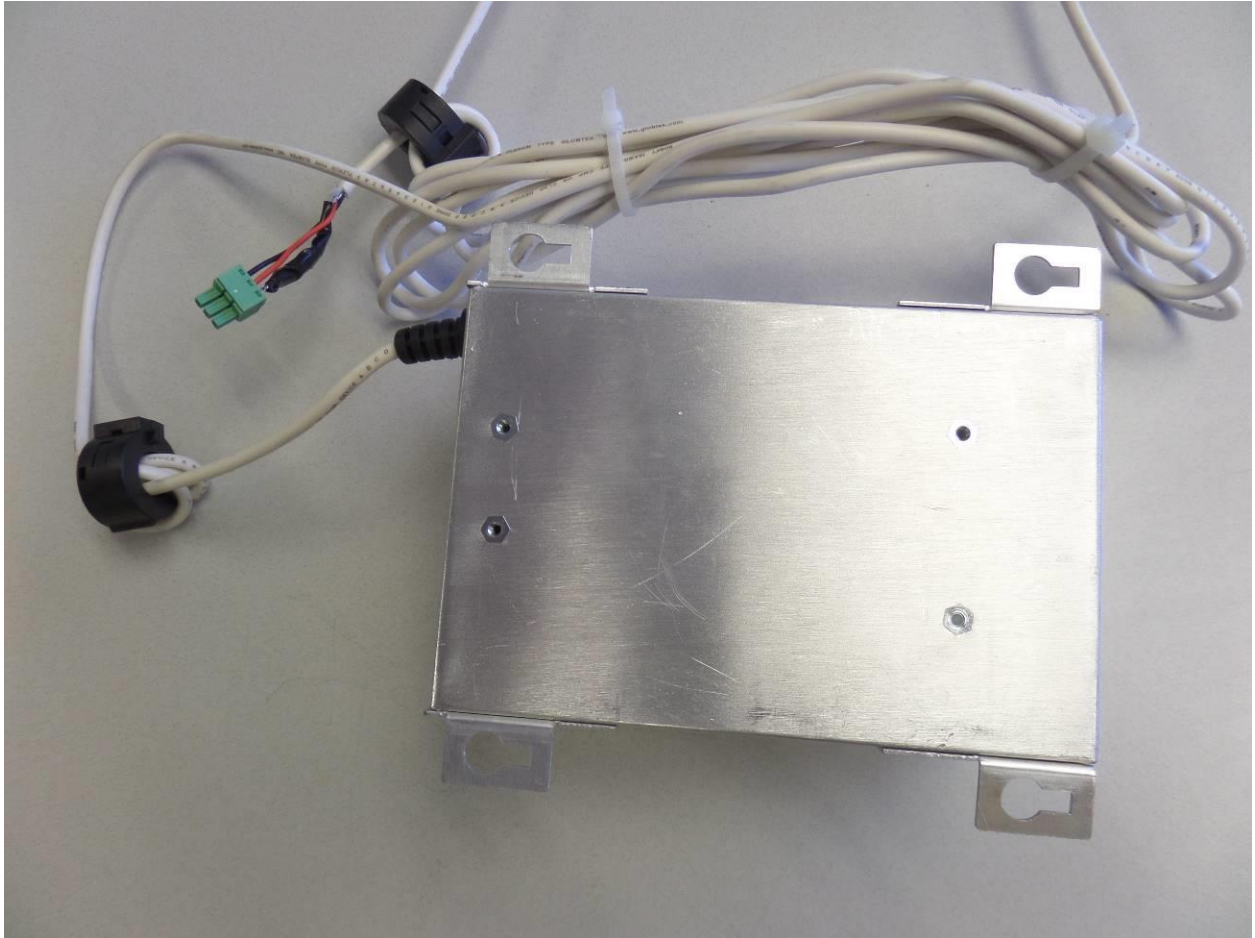
Photograph 11. Enclosure Rock64 LtSnd left side



Photograph 12. Enclosure Rock64 LtSnd right side



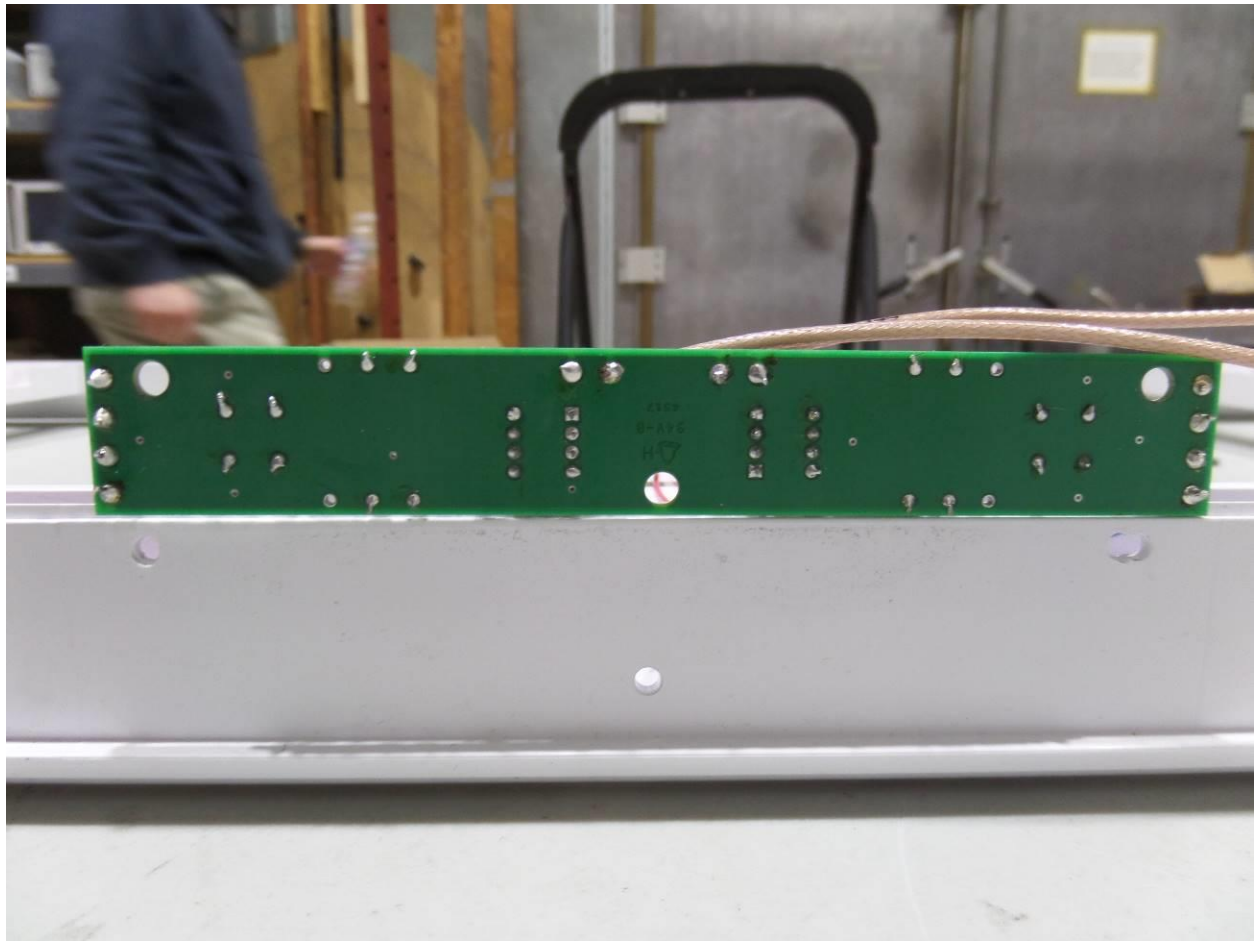
Photograph 13. Enclosure Rock64 LtSnd



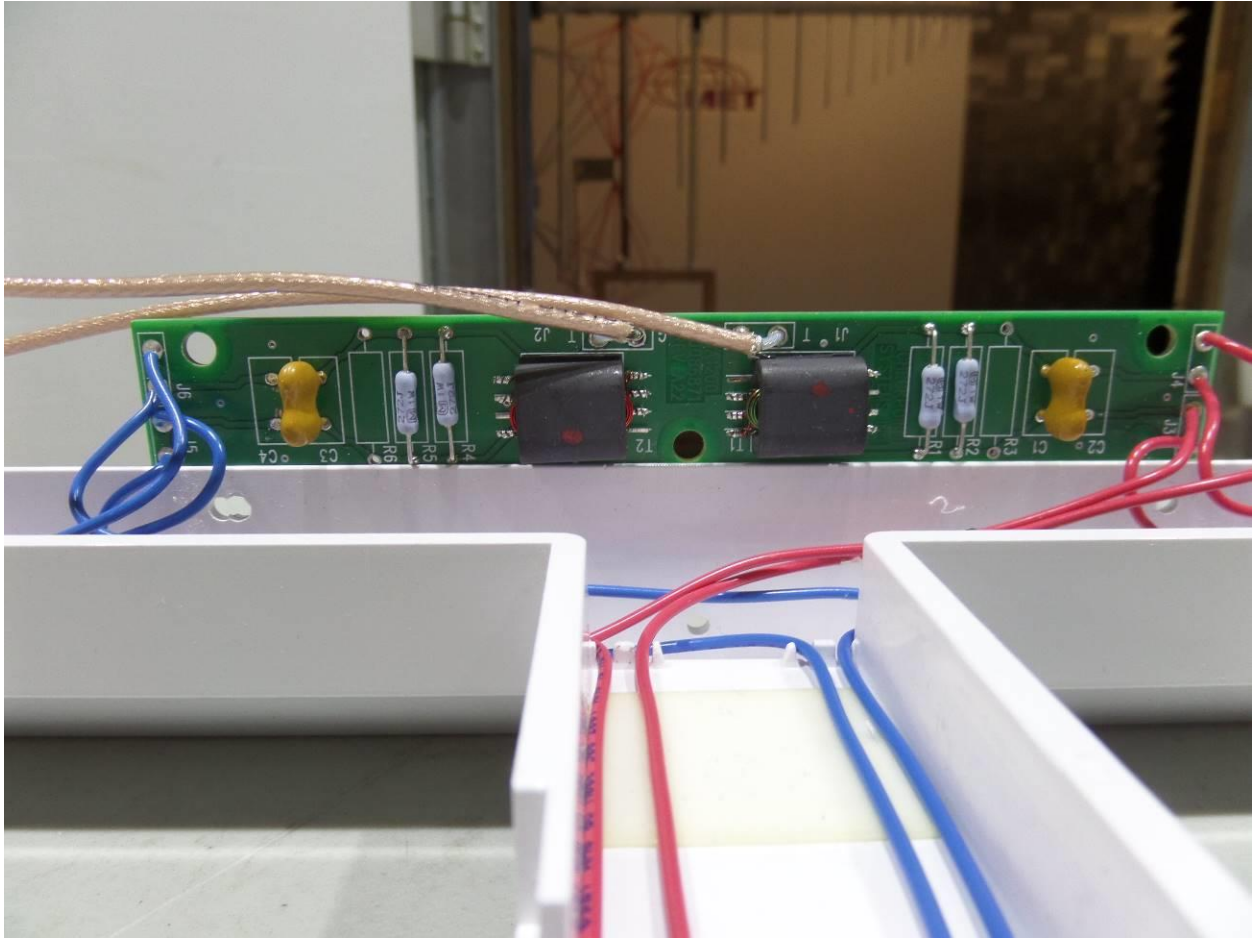
Photograph 14. Globtek 50W PS bottom side



Photograph 15. Globtek 50W PS top side



Photograph 16. NP10 A1200 matching board bottom side



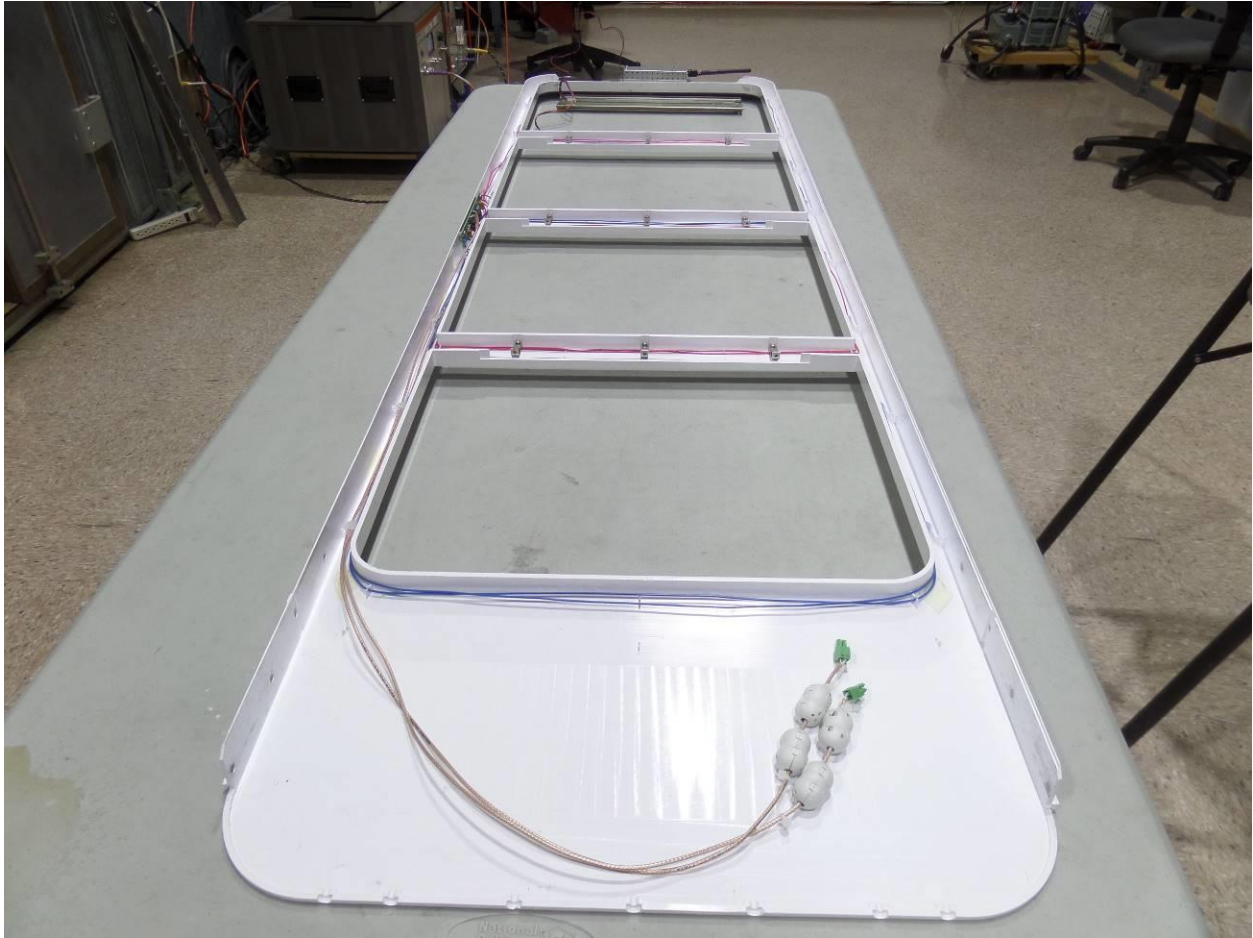
Photograph 17. NP10 A1200 matching board top side



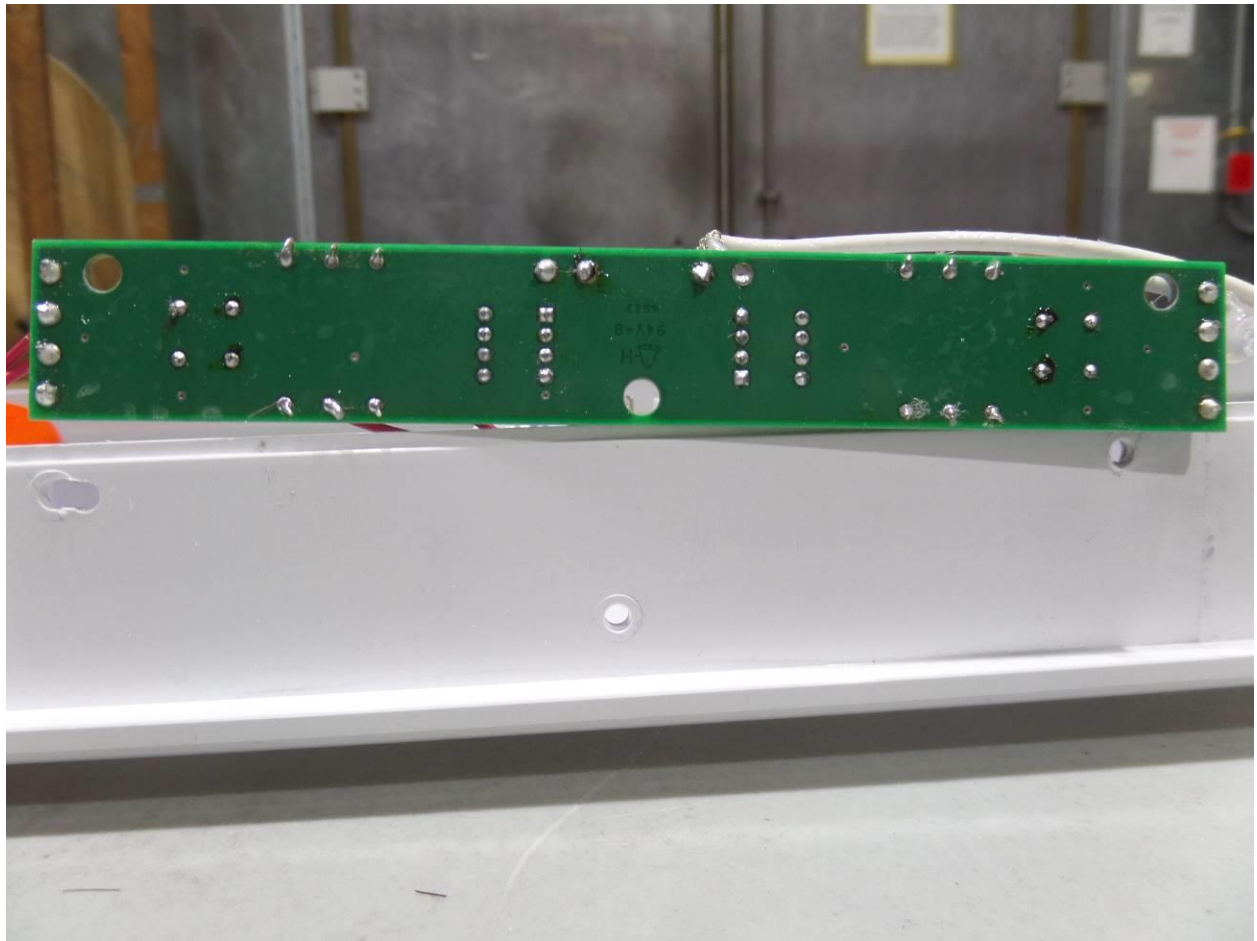
Photograph 18. NP10 bottom side split view



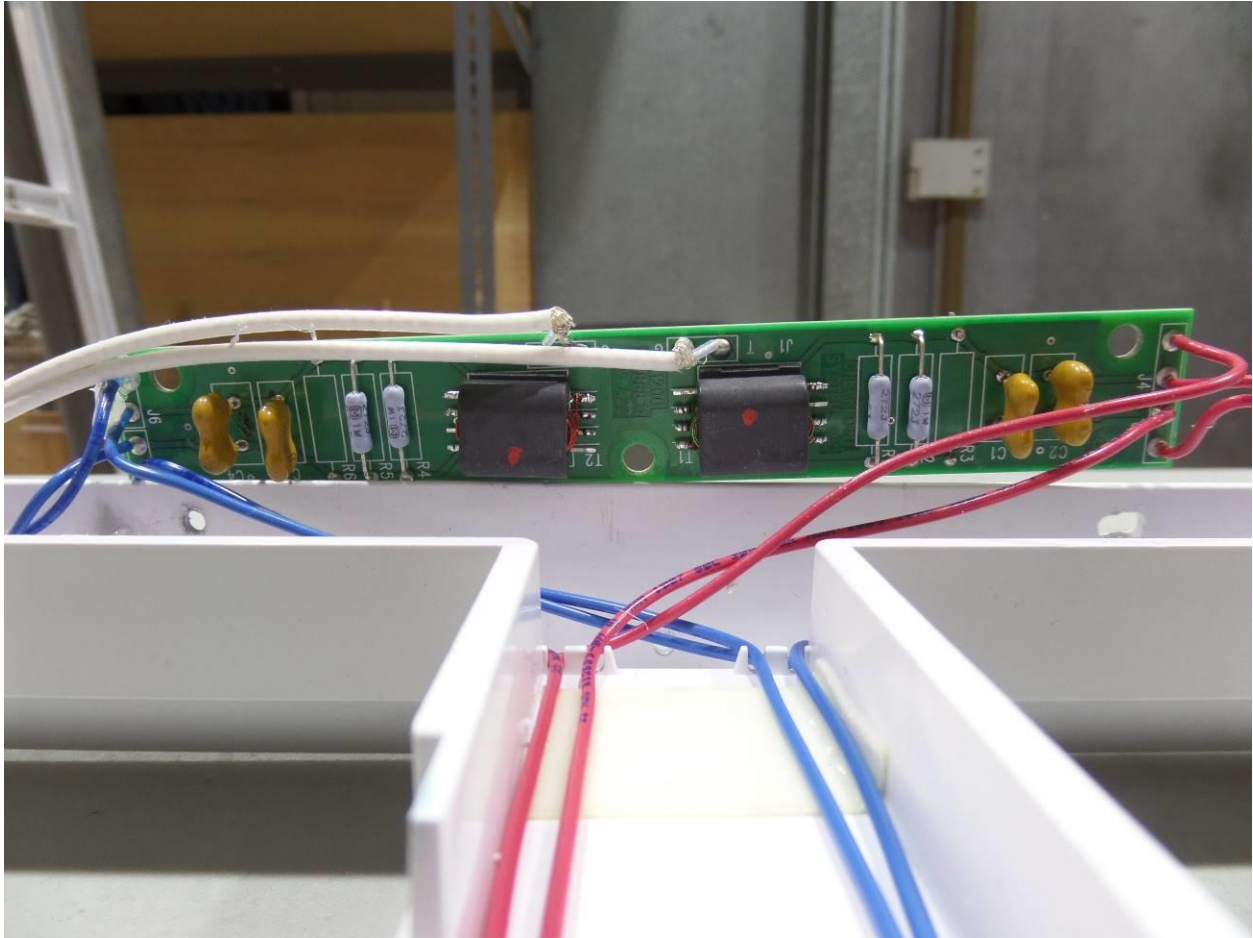
Photograph 19. NP10 bottom side



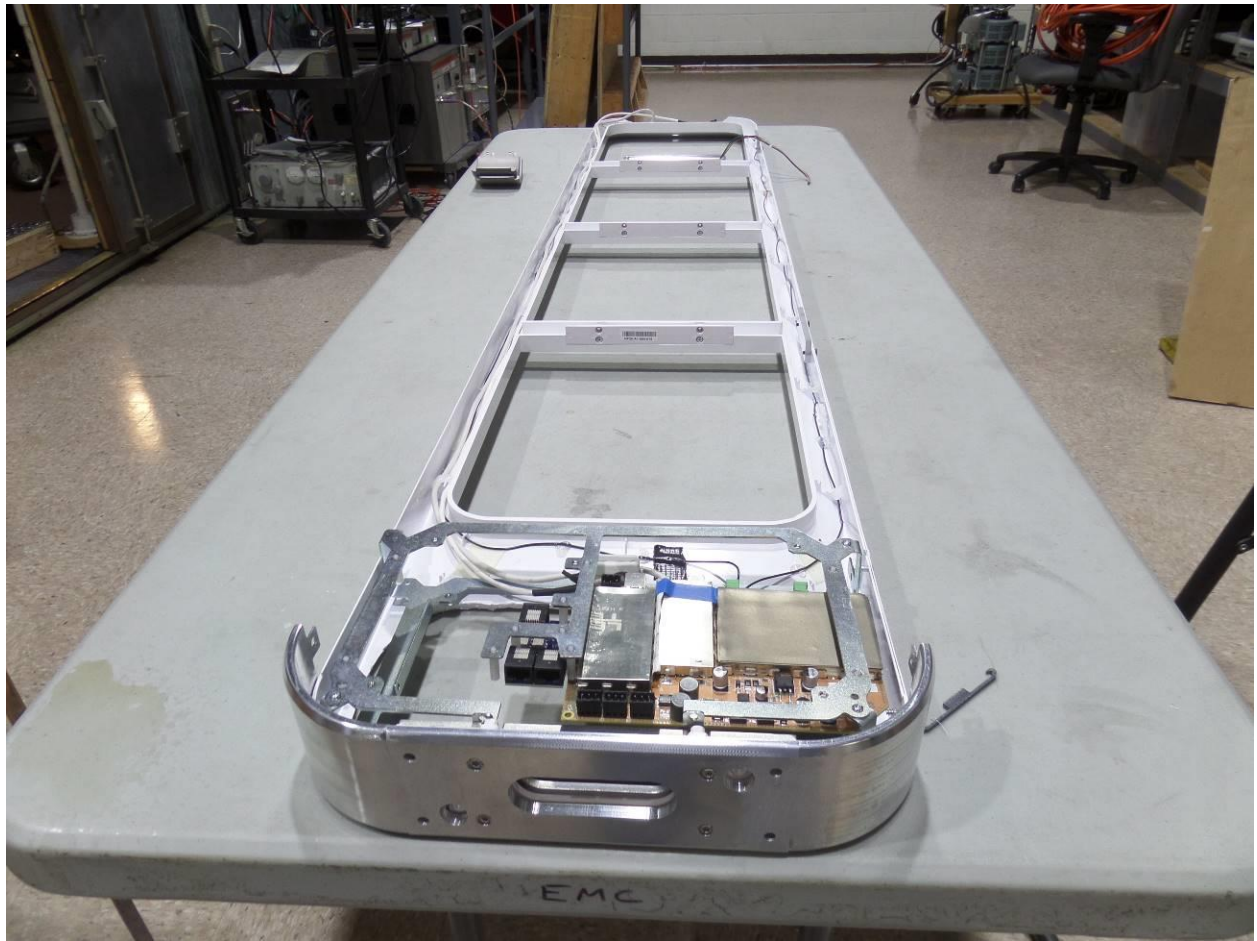
Photograph 20. NP10 top side split view



Photograph 21. NP20 A1200



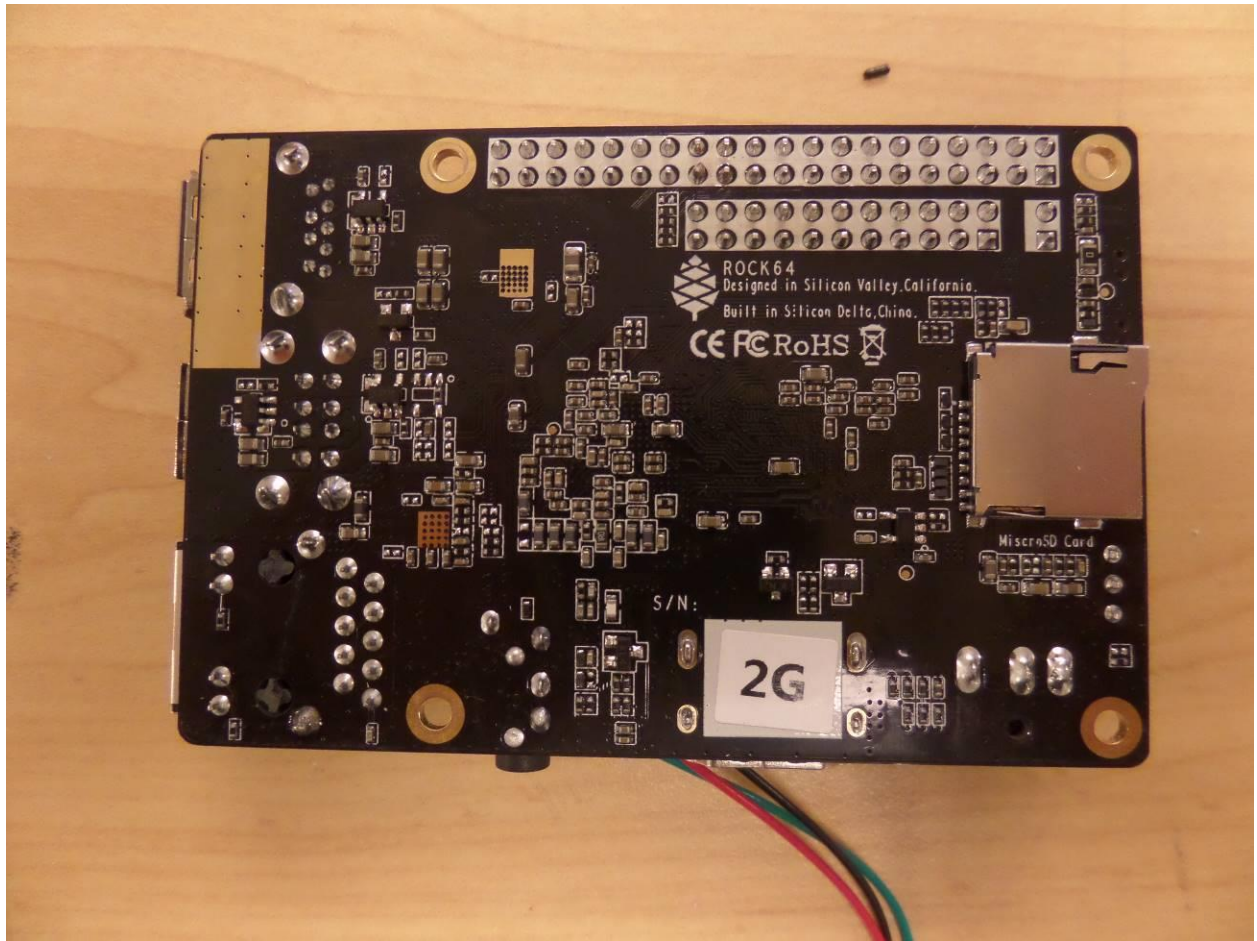
Photograph 22. NP20 A1200 matching board top side



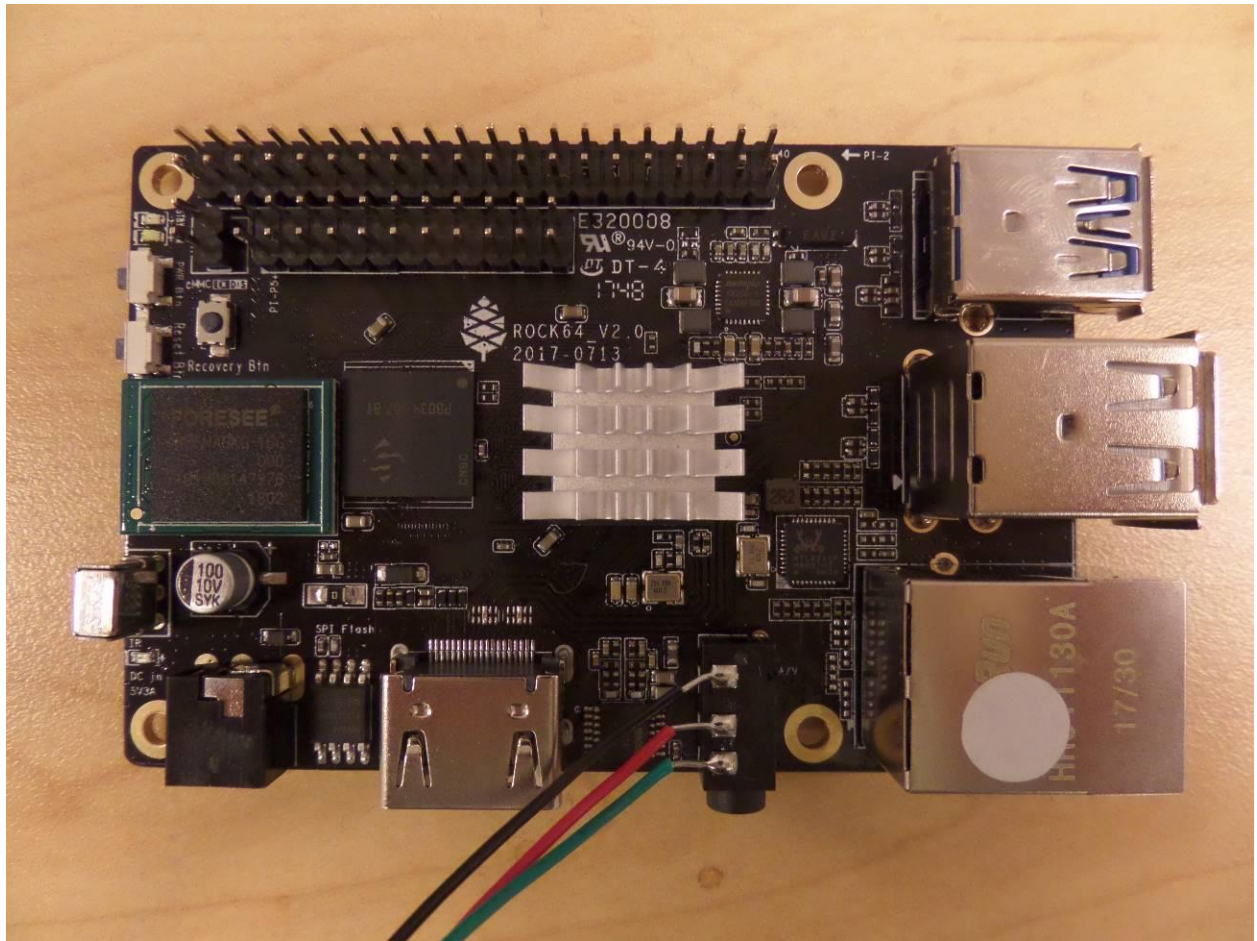
Photograph 23. NP20 bottom side split view



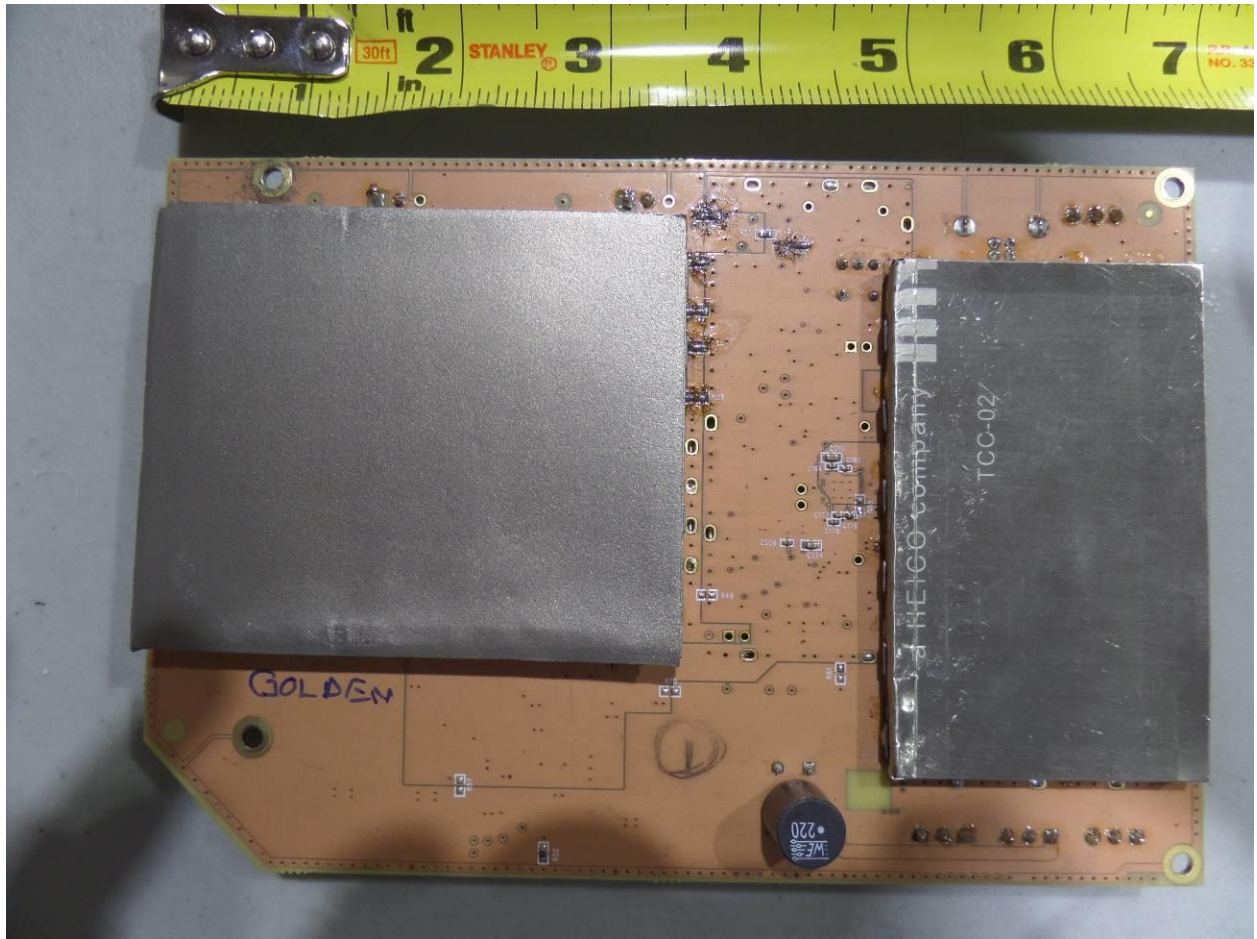
Photograph 24. NP20 top side split view



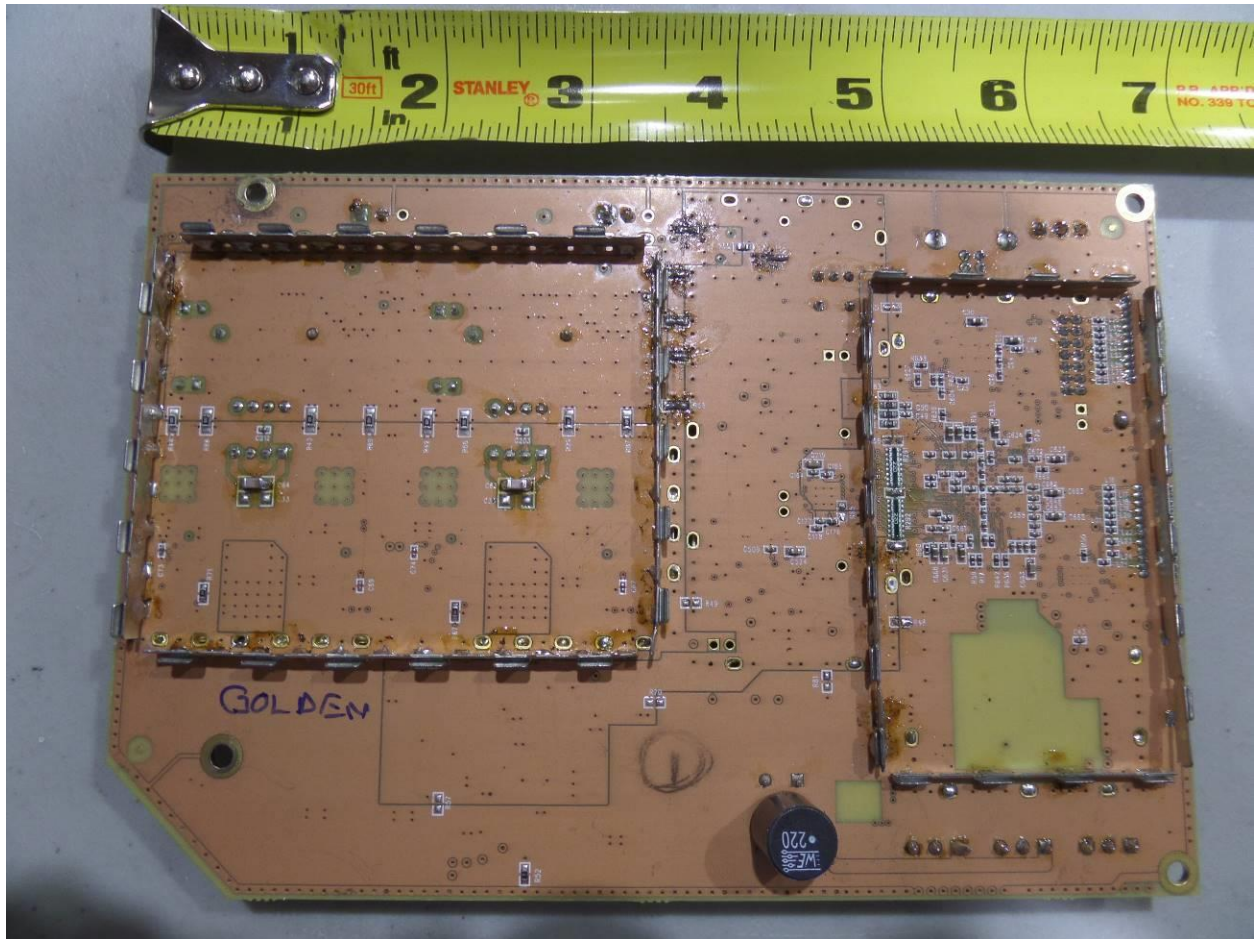
Photograph 25. Rock64 bottom side



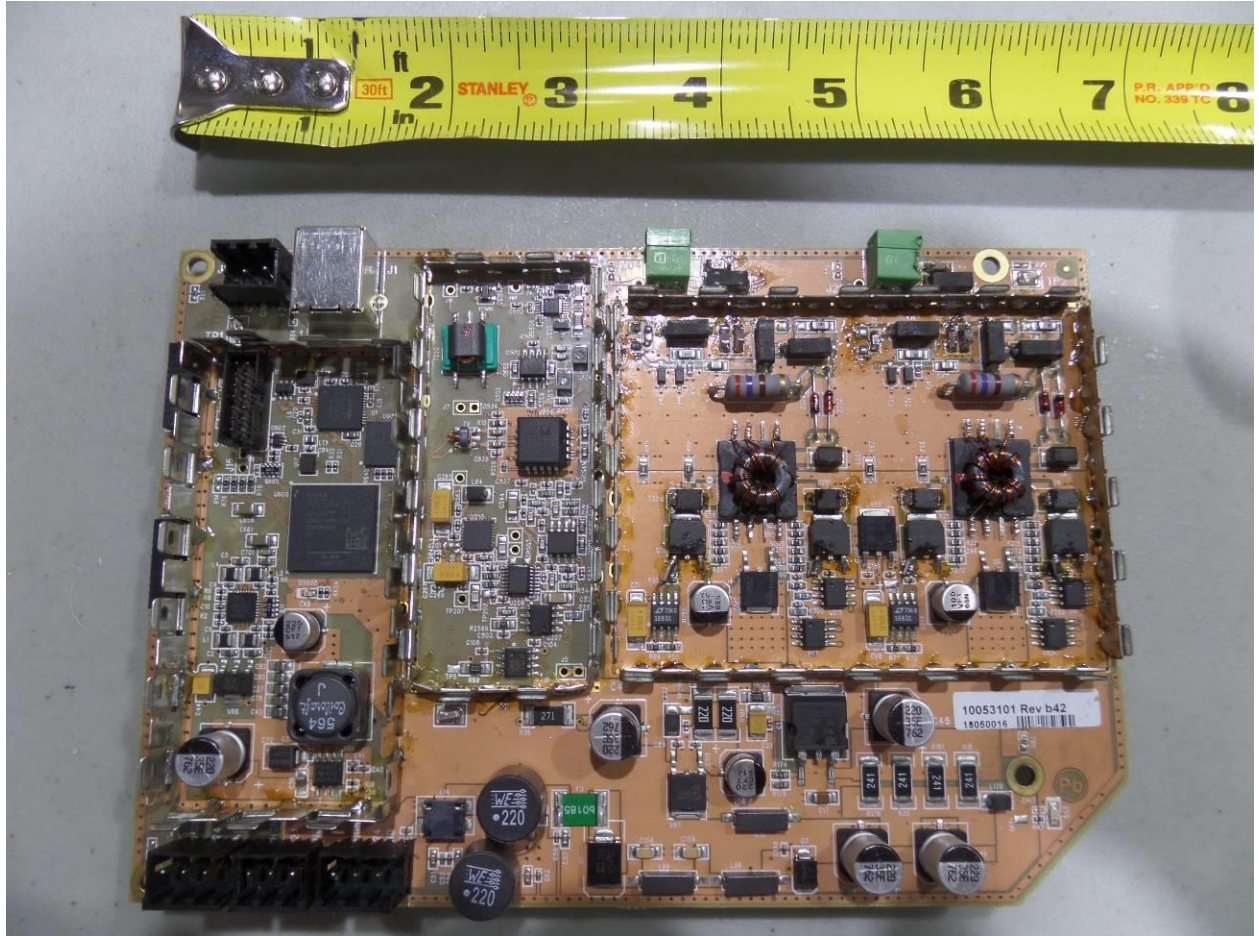
Photograph 26. Rock64 top side



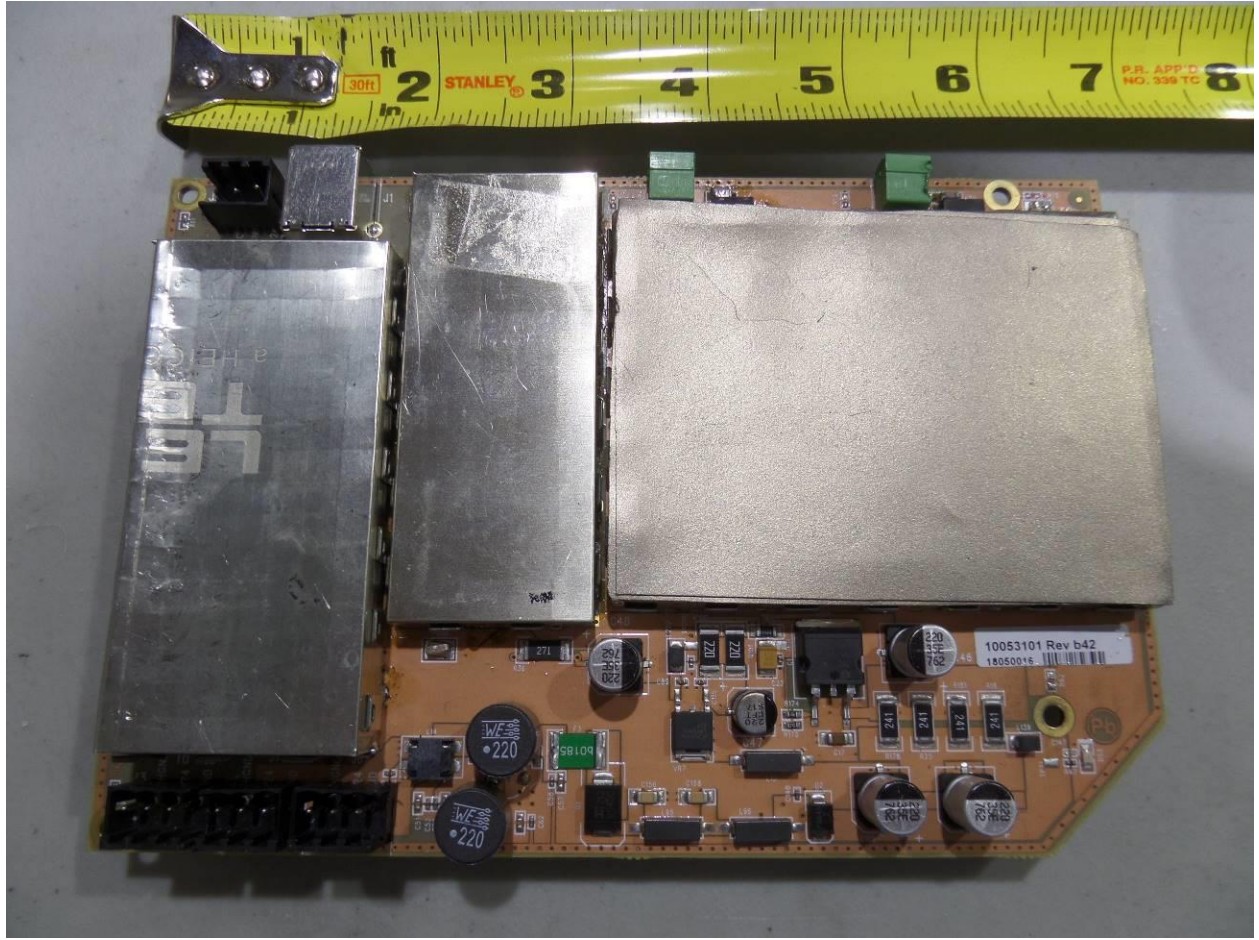
Photograph 27. TR4300 RF EAS TX_RX PCB bottom side



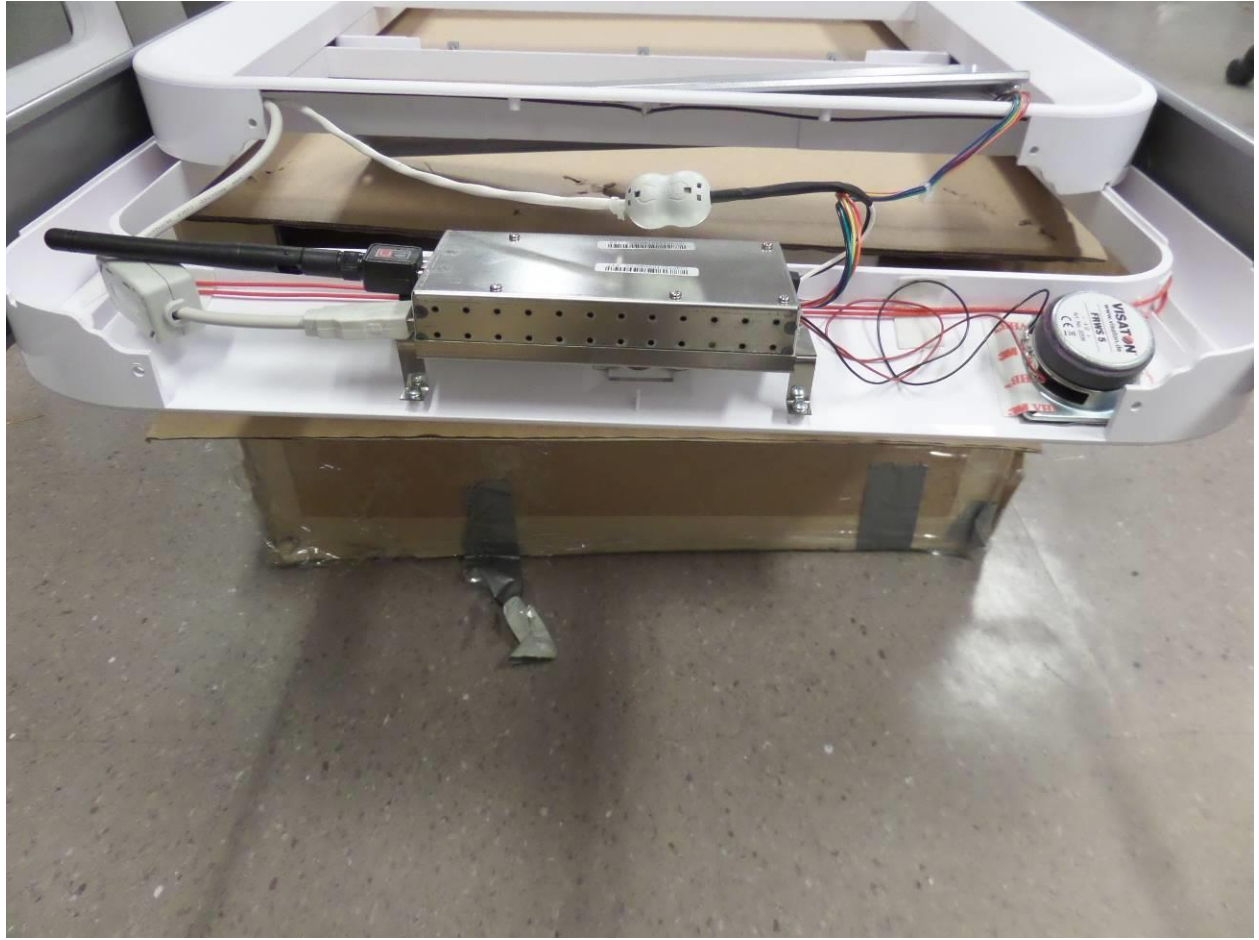
Photograph 28. TR4300 RF EAS TX_RX PCB bottom top side shld removed



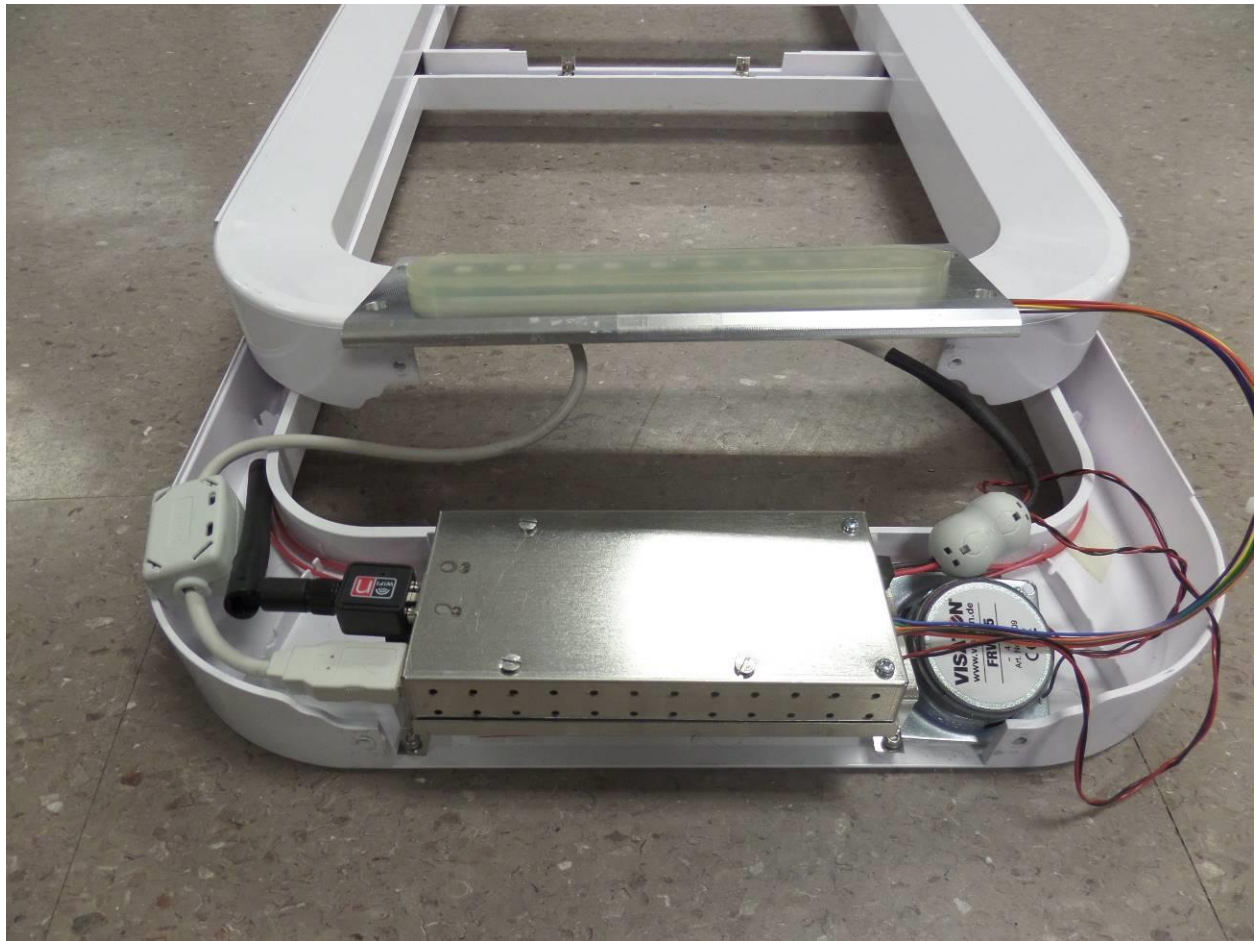
Photograph 29. TR4300 RF EAS TX_RX PCB top side shld removed



Photograph 30. TR4300 RF EAS TX_RX PCB top side



Photograph 31. NP10 top side view wifi bluetooth



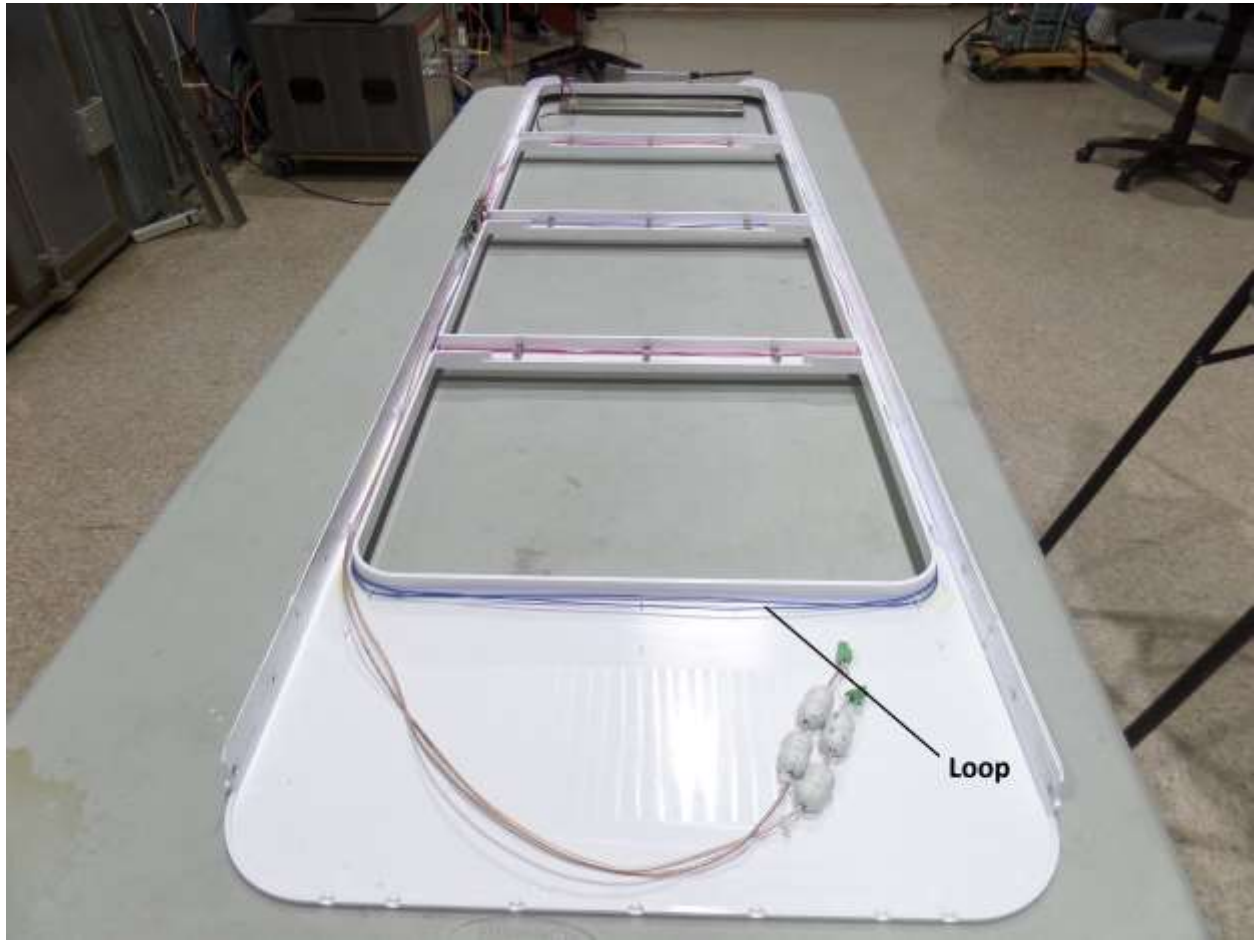
Photograph 32. NP20 top side view wifi Bluetooth



Photograph 33. Wi-Fi dongle bottom side



Photograph 34. Wi-Fi Dongle to side



NP10 top side split view point out loop



NP20 top side split view pointing out loop