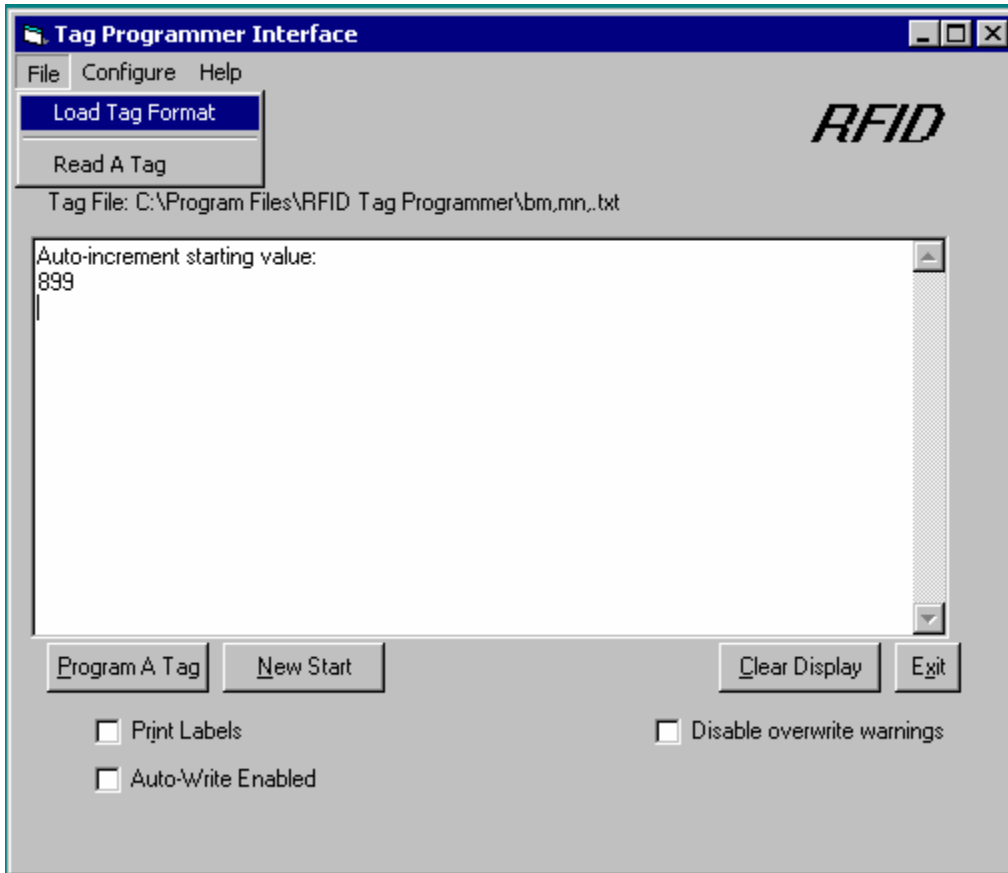


Section 1 – Loading the application

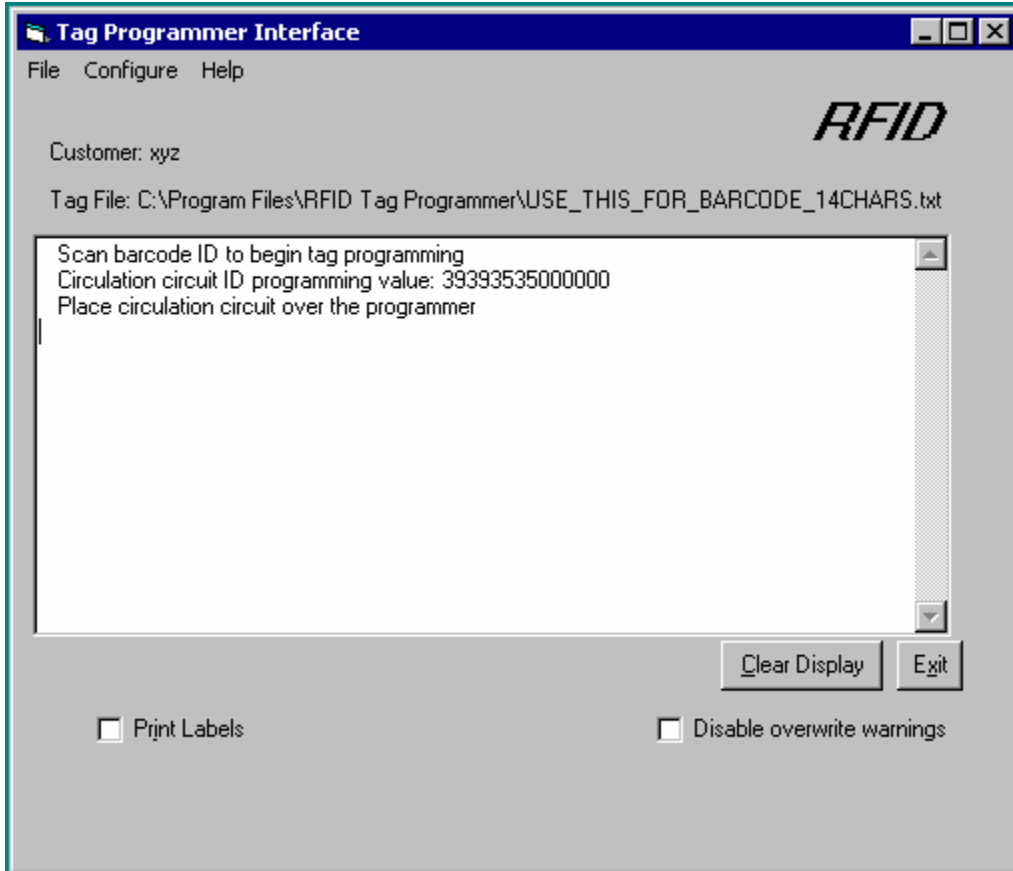
1. Start the Checkpoint RW Tag Programmer application.
2. Click on File and then on Load Tag Format.



3. Choose the tag format file created for you by Checkpoint Systems. If you are programming your existing barcodes into the circulation circuits, skip to Section 2. If you are having the application auto-increment your item identifiers, skip to Section 3.

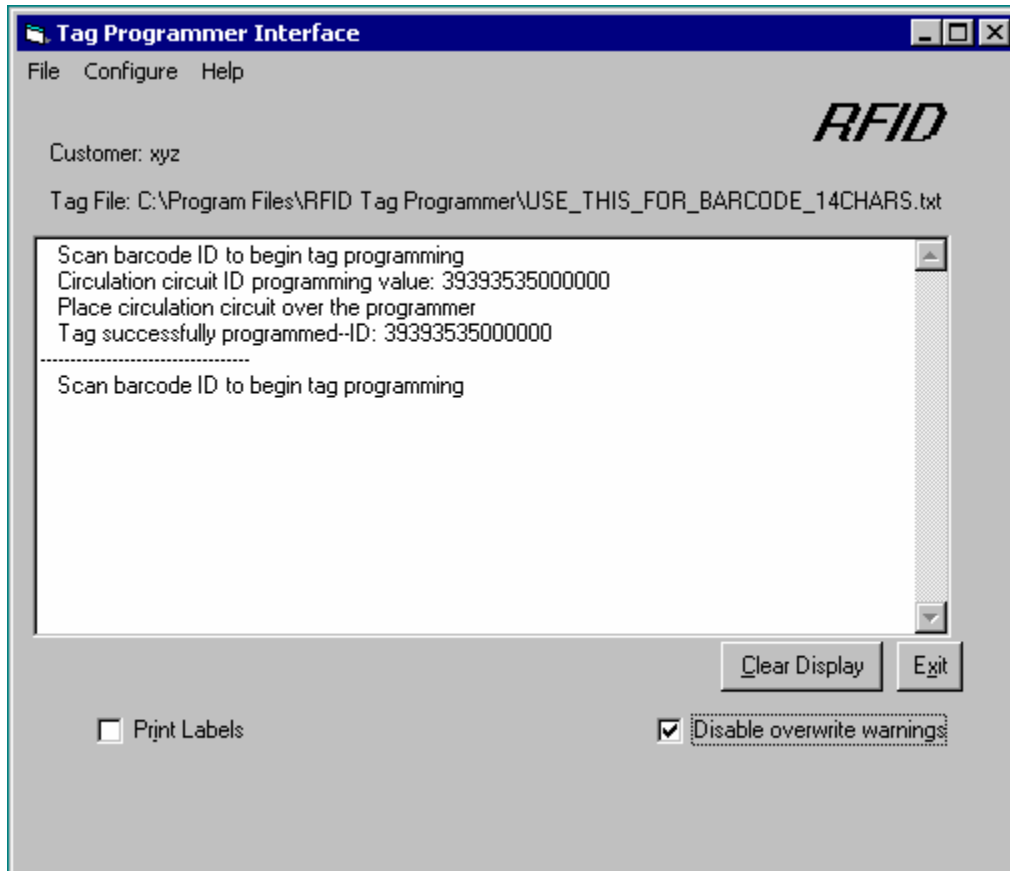
Section 2 – Using existing barcode identifiers

1. Place circulation circuit on the material to be tagged.
2. Scan the barcode on the material using the barcode scanner.



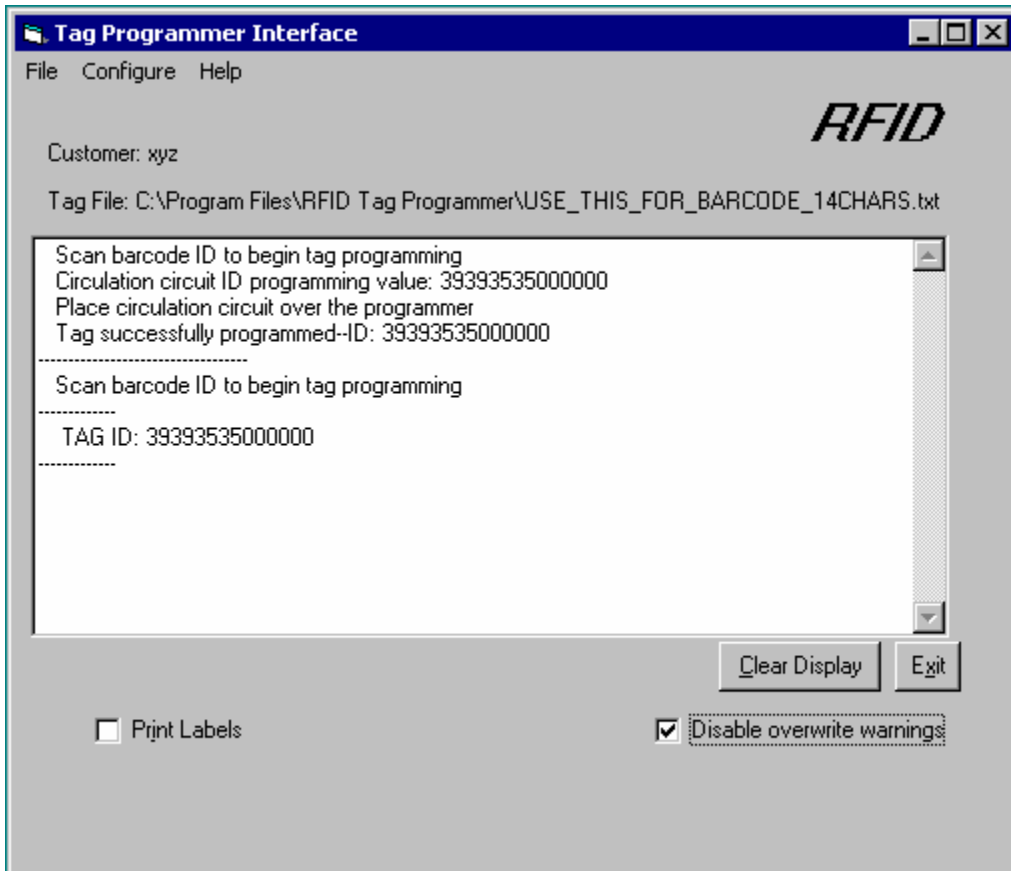
User Guide for the Non-Contact Programmer

3. Pass the material needing to be programmed over the non-contact programmer. The item identifier will now be programmed into the circulation circuit.



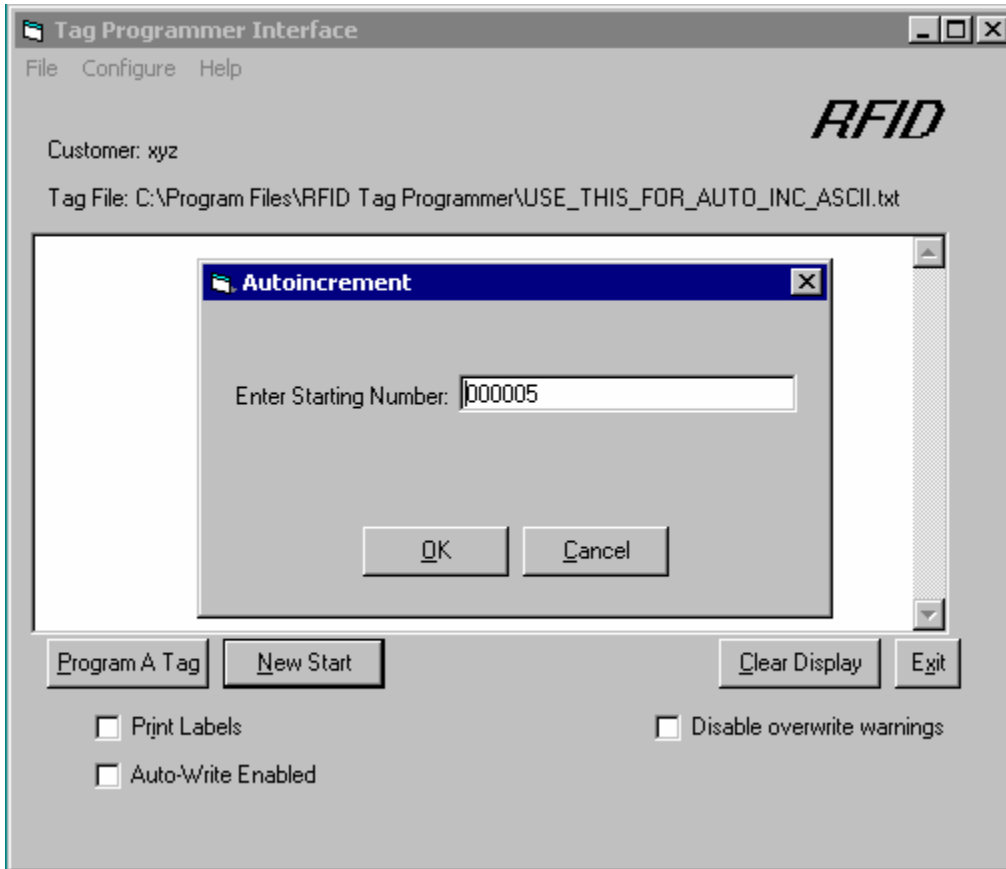
User Guide for the Non-Contact Programmer

4. Pass the material over the non-contact programmer again to verify the item identifier programmed into the circulation circuit matches the barcode identifier.



Section 3 – Auto incrementing the item identifier

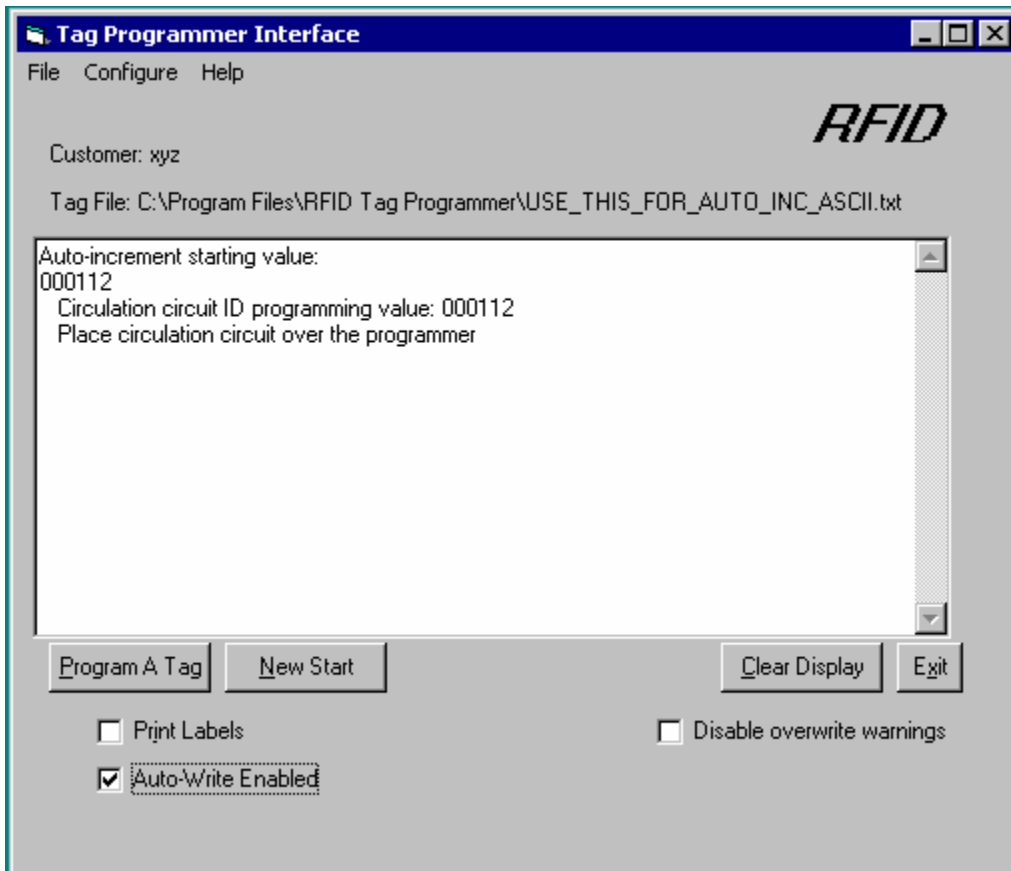
1. Click on the New Start button.



2. Enter in the starting value for your barcode sequence. Click on OK.
3. If you are programming multiple tags, click on Auto-Write Enabled.

User Guide for the Non-Contact Programmer

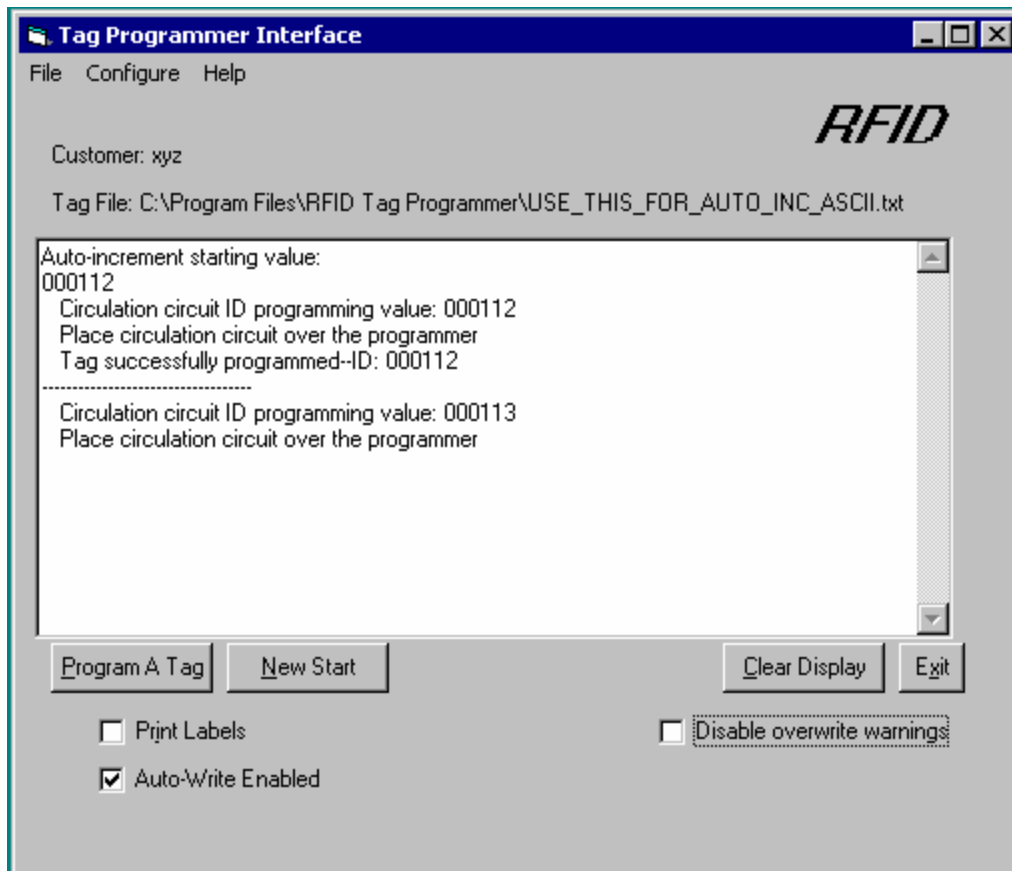
4. Click on Program A Tag.



5. Place the circulation circuit on the material to be tagged.

User Guide for the Non-Contact Programmer

6. Pass the material over the non-contact programmer. The item identifier will now be programmed into the circulation circuit.



7. To program another circulation circuit, simply insert the tag into the material and pass it over the non-contact programmer.

User Guide for the Non-Contact Programmer

8. To verify the item identifier programmed into the circulation circuit, uncheck Auto-Write Enabled, and pass the materials over the non-contact programmer.

