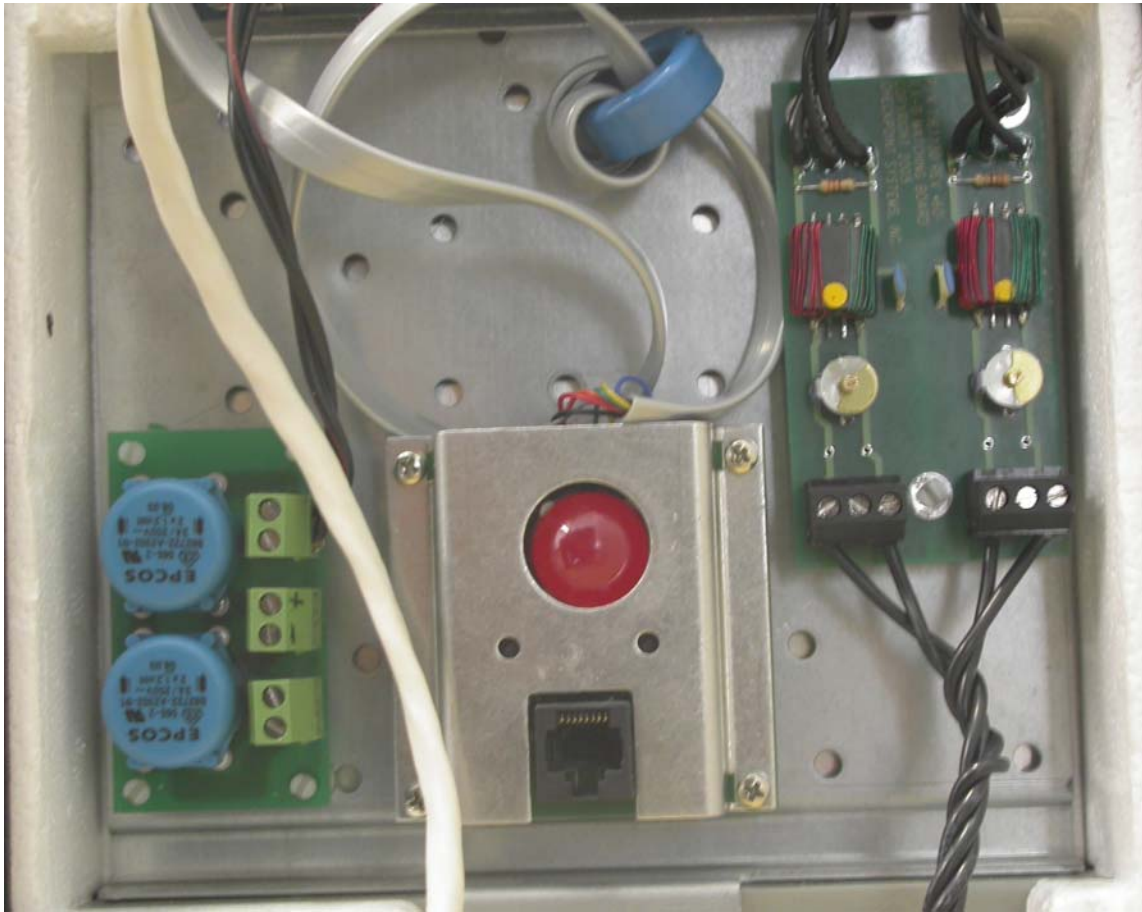
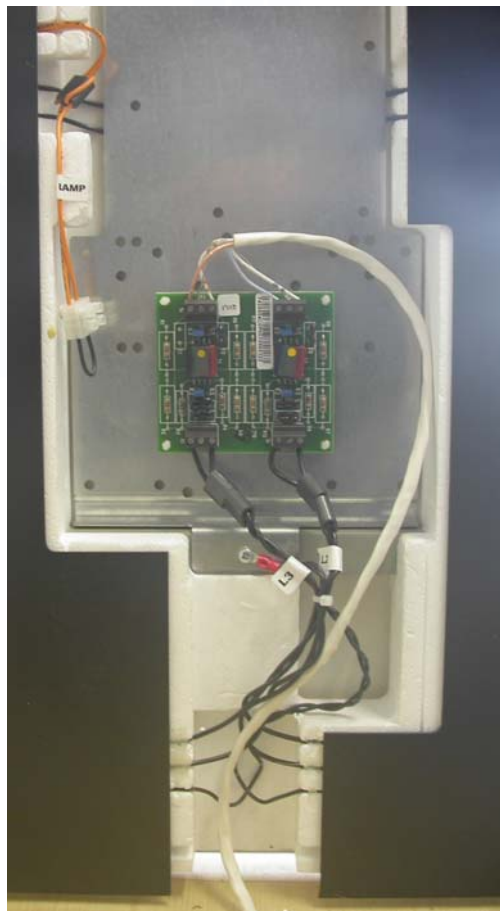
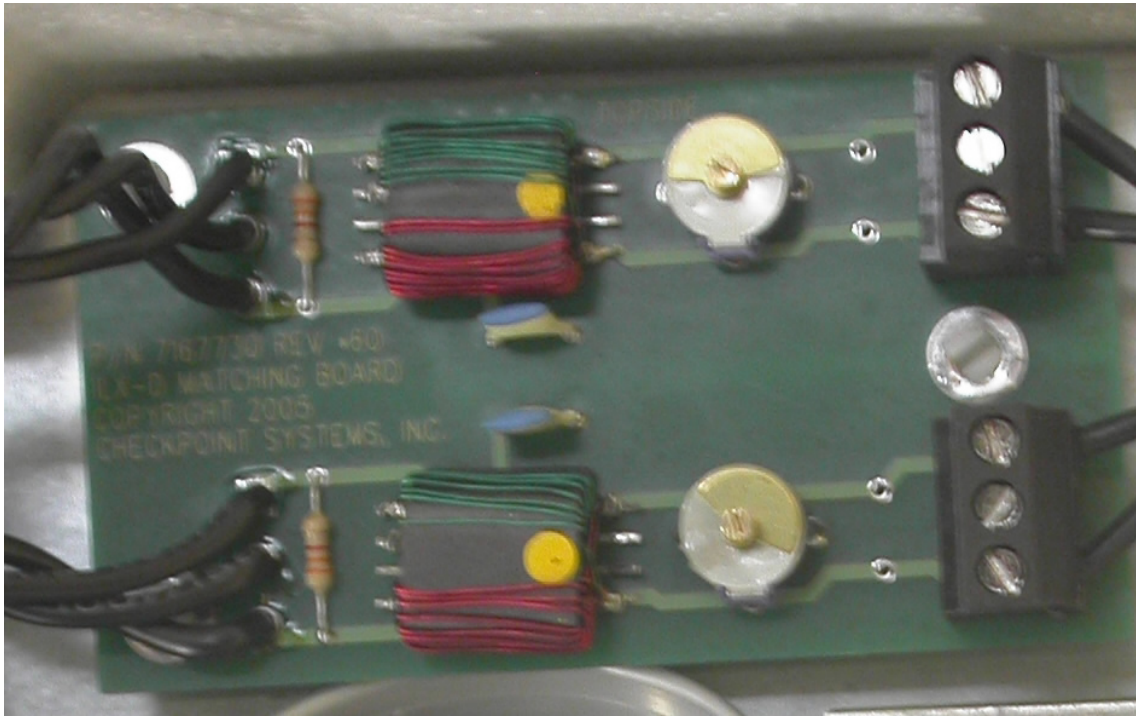


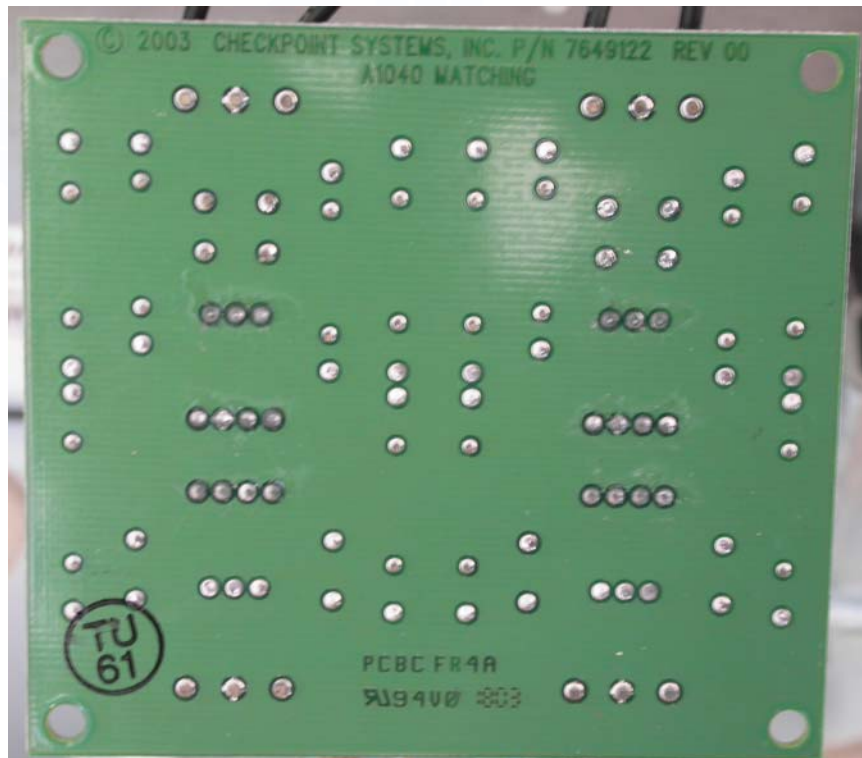
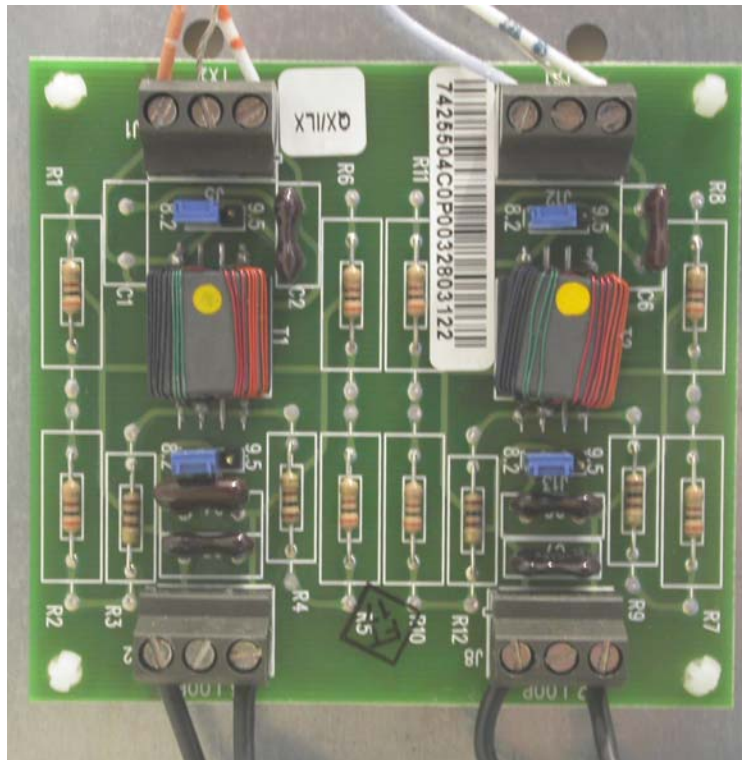
FCC ID: DO4LIB24



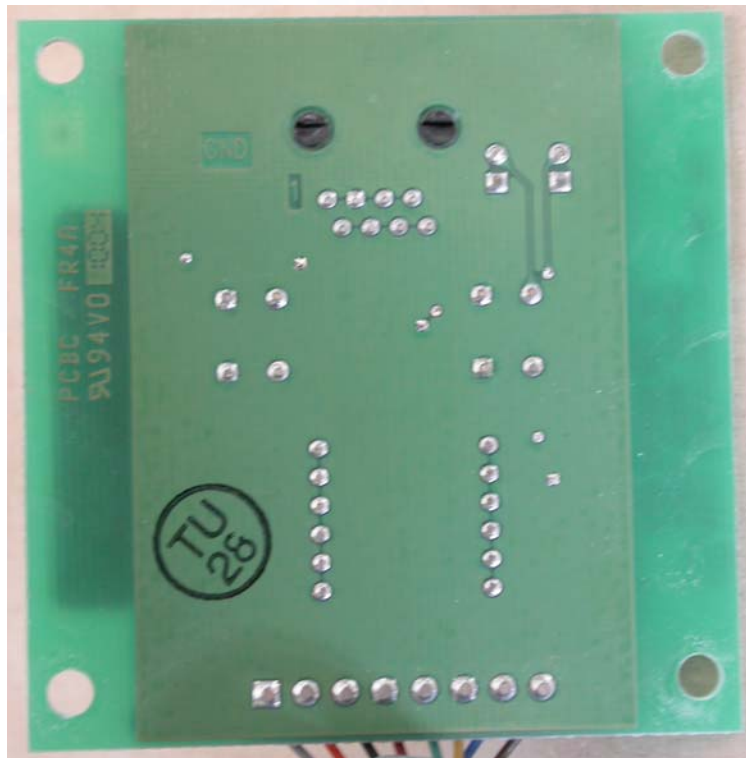
FCC ID: DO4LIB24



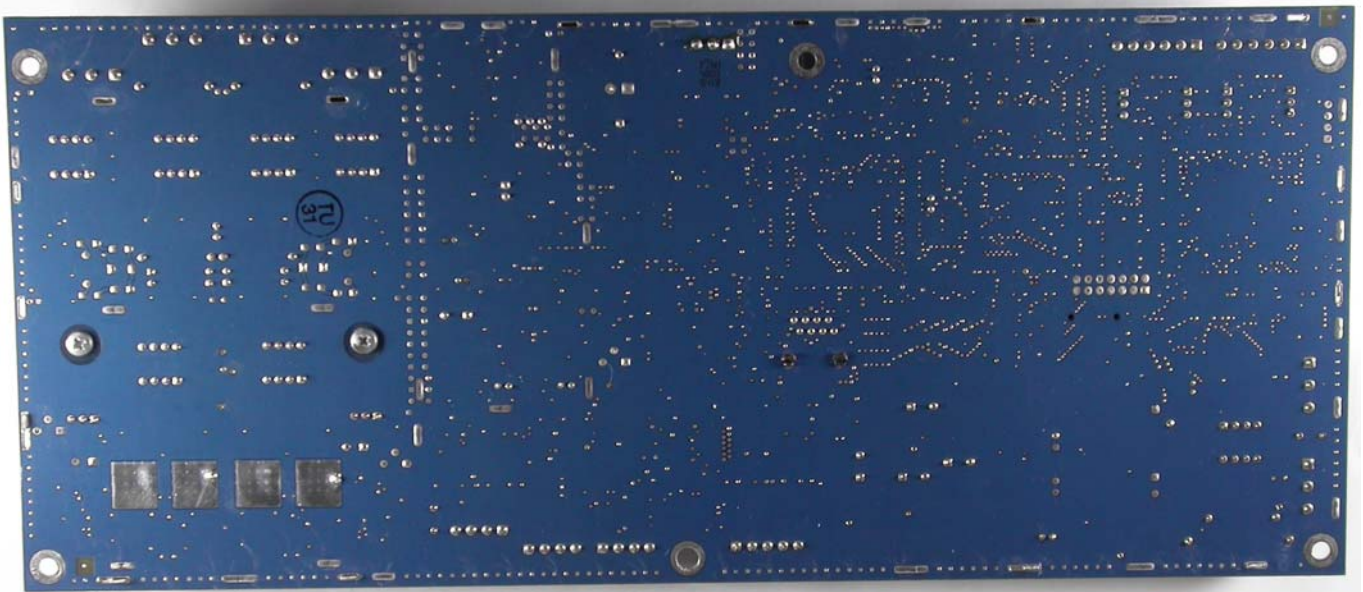
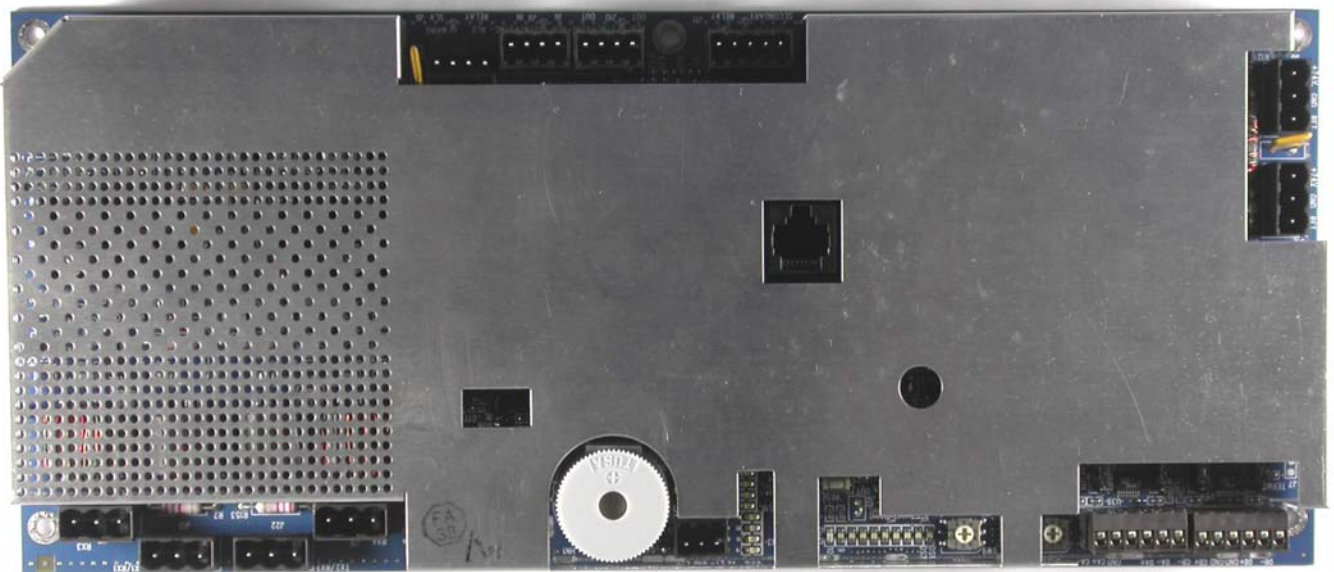
FCC ID: DO4LIB24



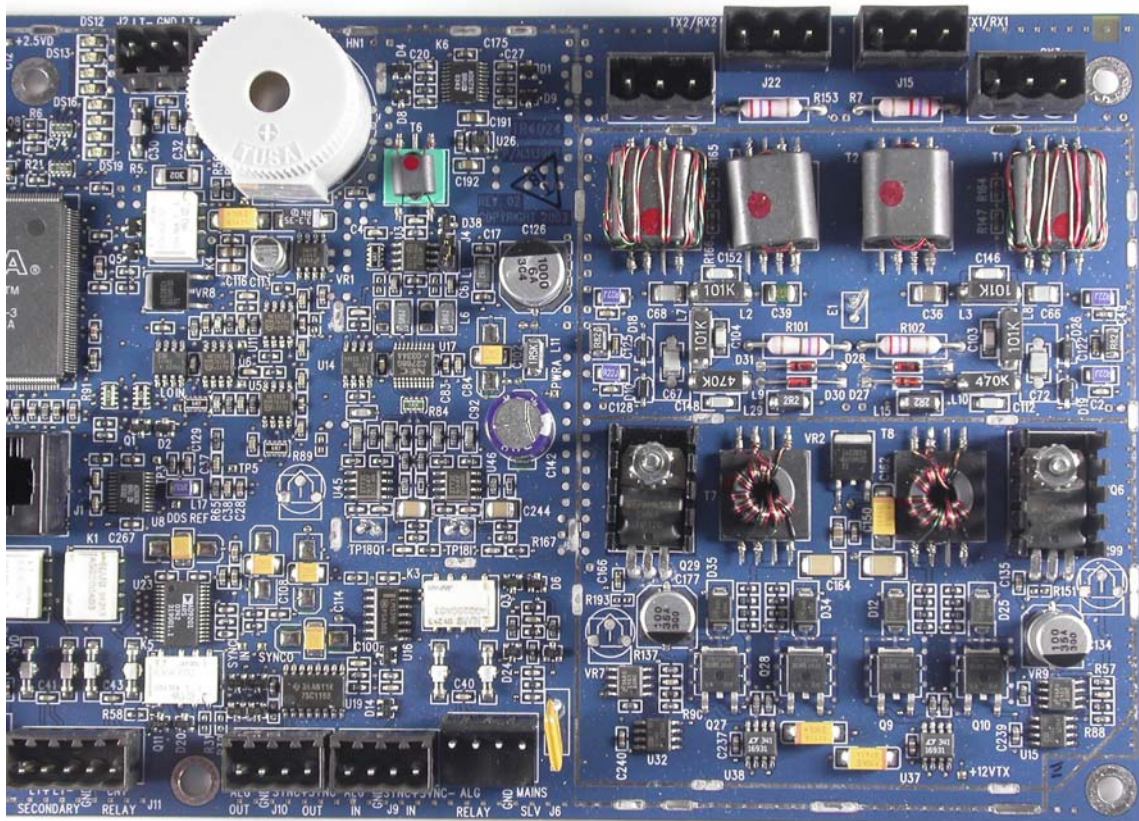
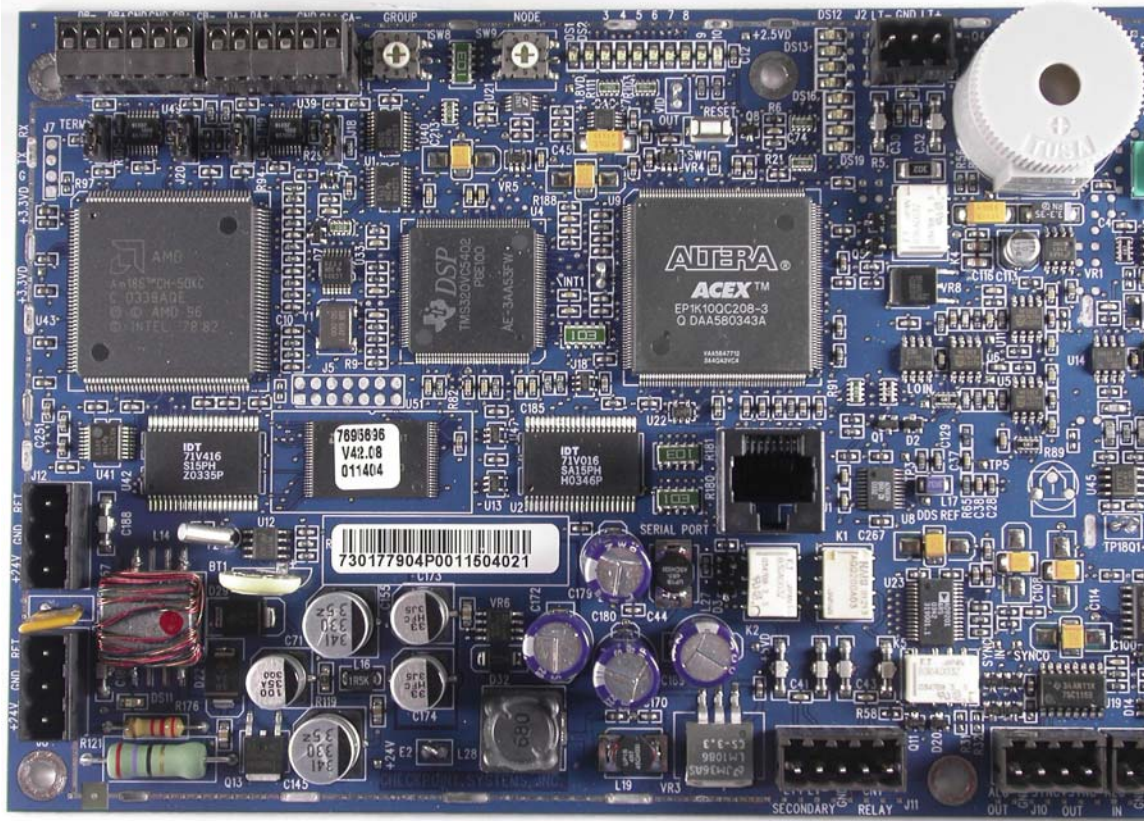
FCC ID: DO4LIB24



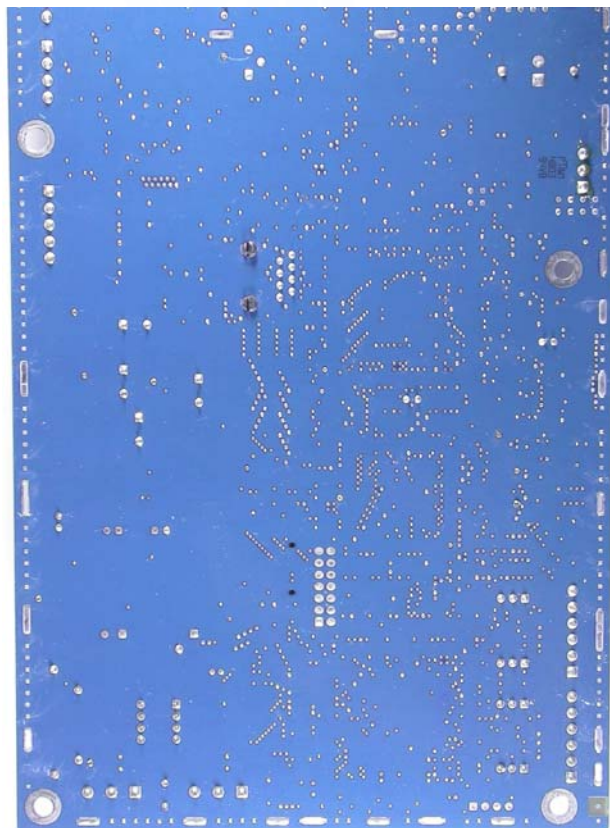
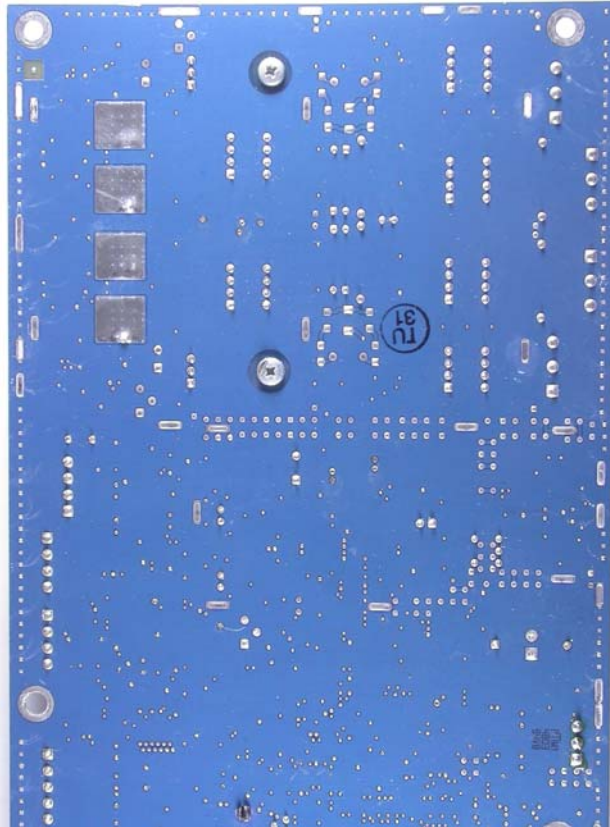
TR 4024 electronic:

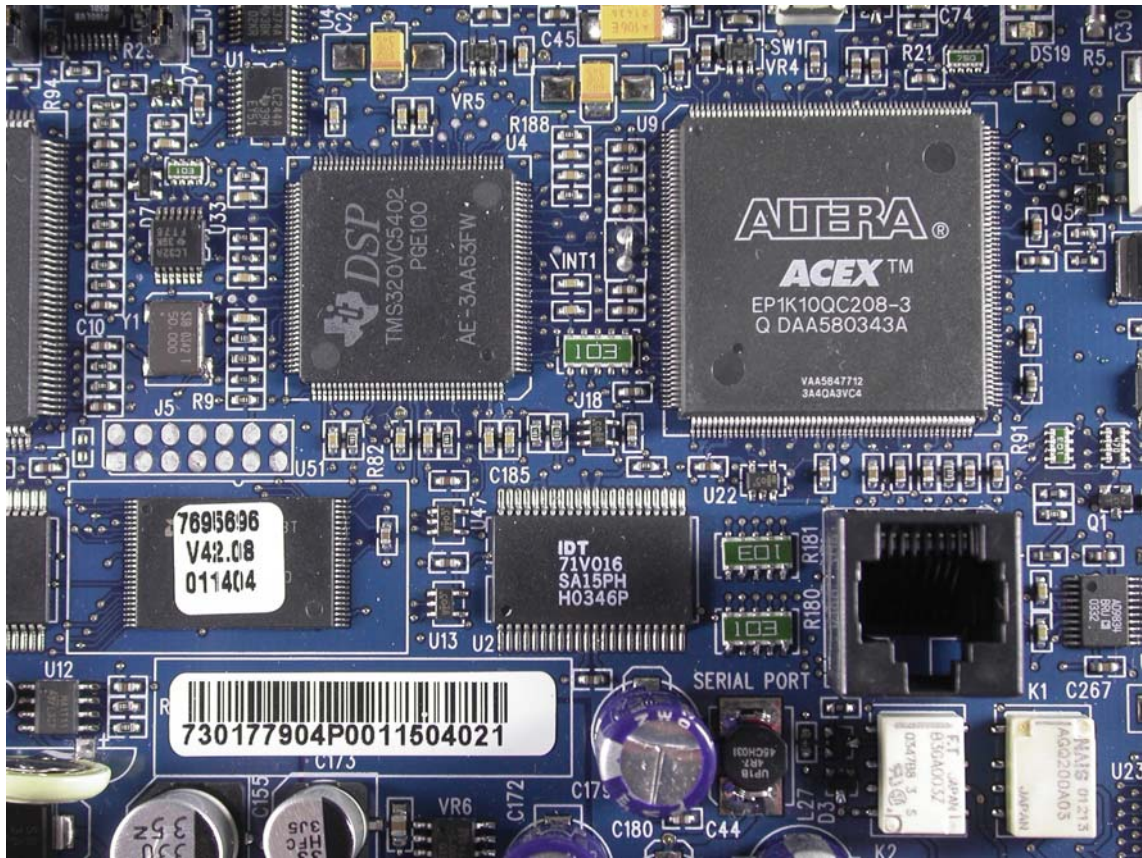


FCC ID: DO4LIB24



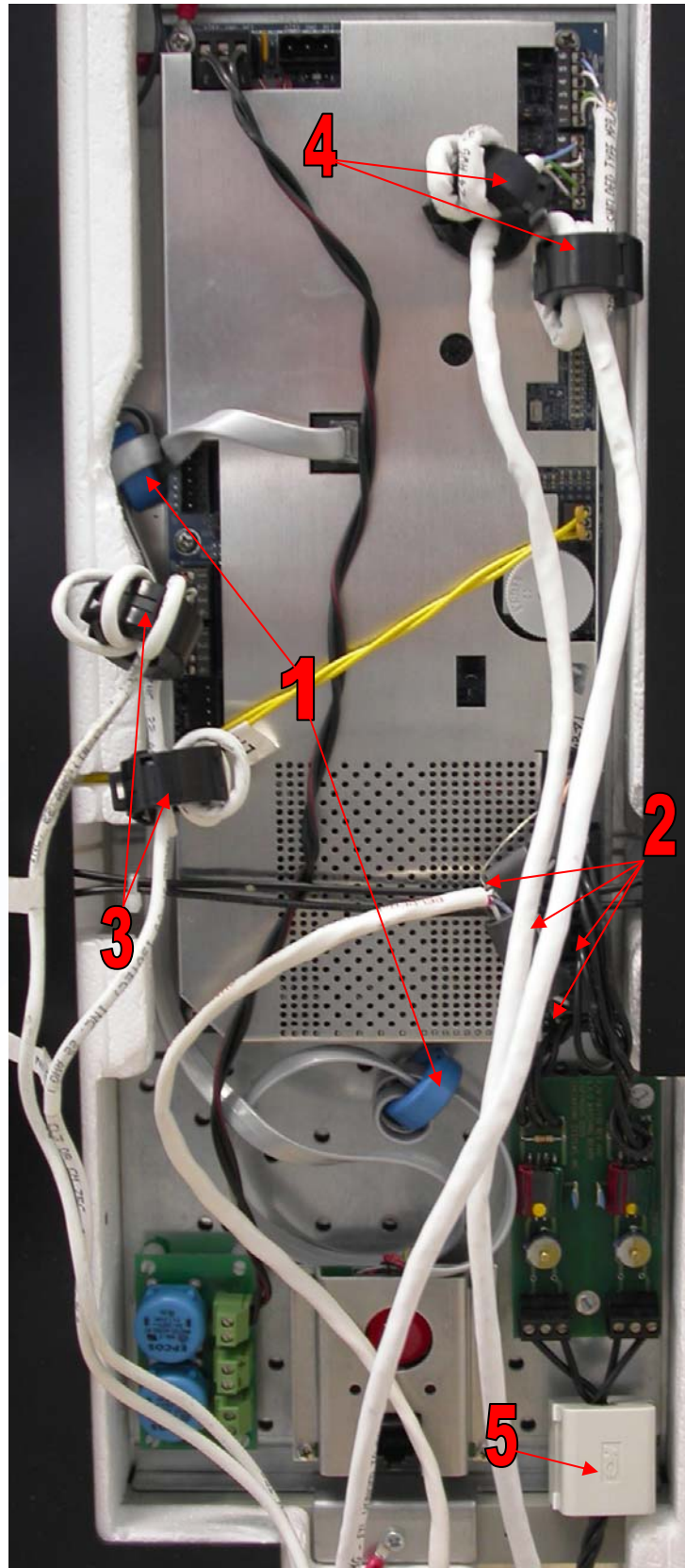
FCC ID: DO4LIB24

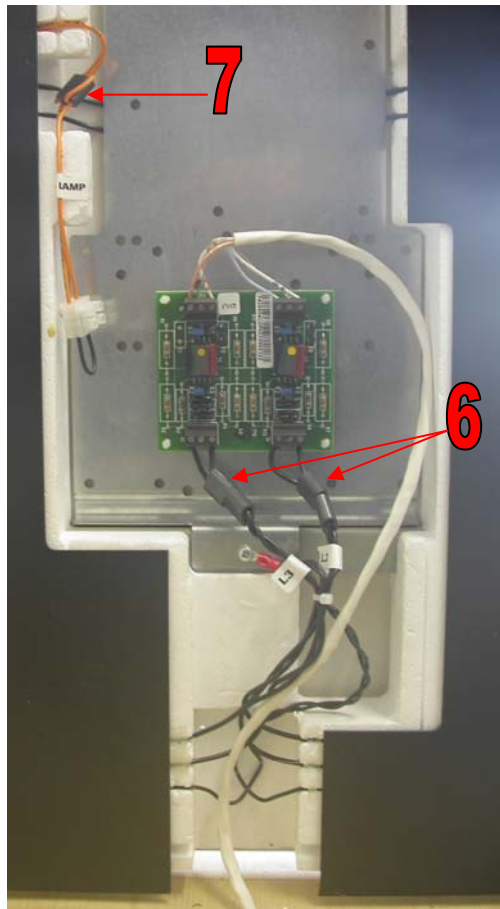






### 3.2 Ferrite Locations





### Ferrite Locations:

1. Fair Rite P/N 7118986 (Order No B64290-L618-X35) – Add a ferrite on the end of the patch board cable with three turns.
2. Fair Rite P/N 734020 (Order No 2865-000-202) – Add 2 ferrites on the end of the Rx3 and Rx4 connection with one turn.
3. Fair Rite P/N 284760 (Order No 0443806406) – Add a ferrite on each sync cable with three turns.
4. Fair Rite P/N 284760 (Order No 0443806406) – Add a ferrite on each data communication cable with four turns.
5. Fair Rite P/N 3002453 (Kitagawa SFC-10) – Add a ferrite on the Tx1 and Tx2 cable with one turn.
6. Fair Rite P/N 734020 (Order No 2865-000-202) – Add 2 ferrites on the end of L3 and L2 connection with one turn.
7. Fair Rite P/N 734020 (Order No 2865-000-202) – Add 1 ferrite on the lamp cable with 2 turns through the ferrite.