

Physical Features

The following is an internal view of the gate.

Upper frame section with
Signal-LED

Antenna body
with antenna
conductor

Antenna tuning board

Antenna base containing
electronics

Floor plate
(hole template)

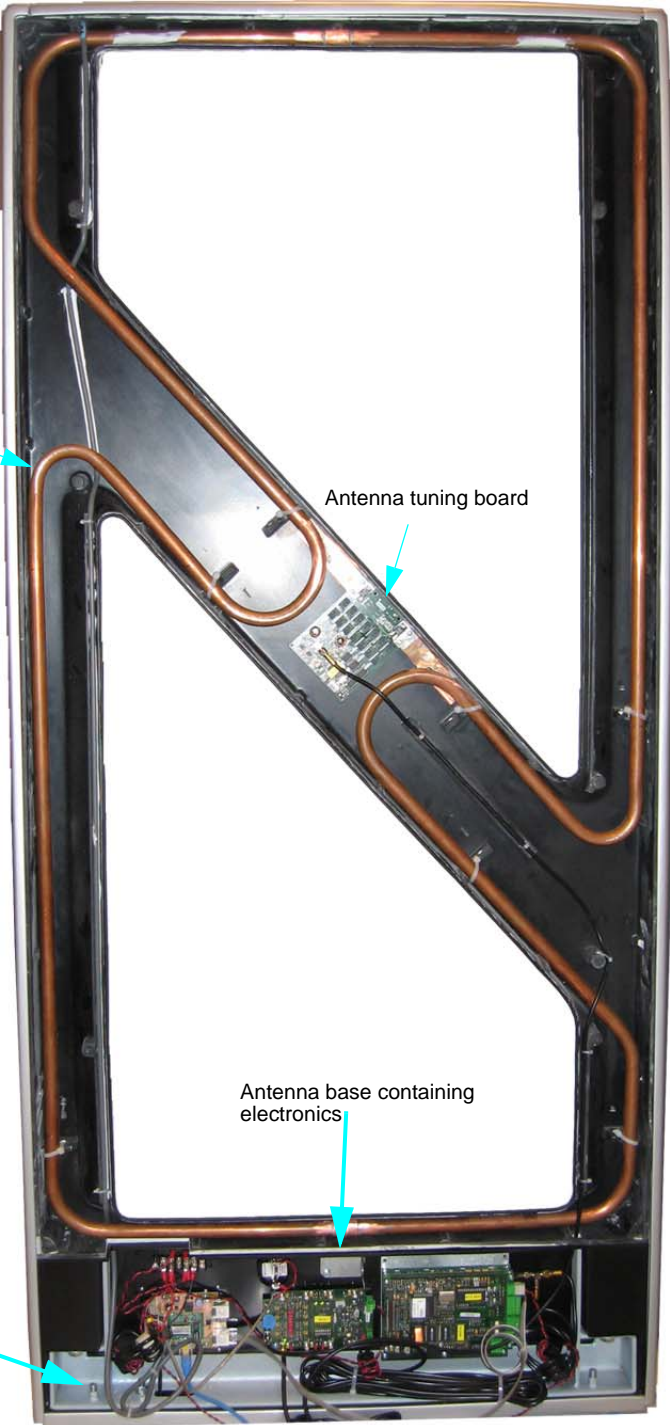
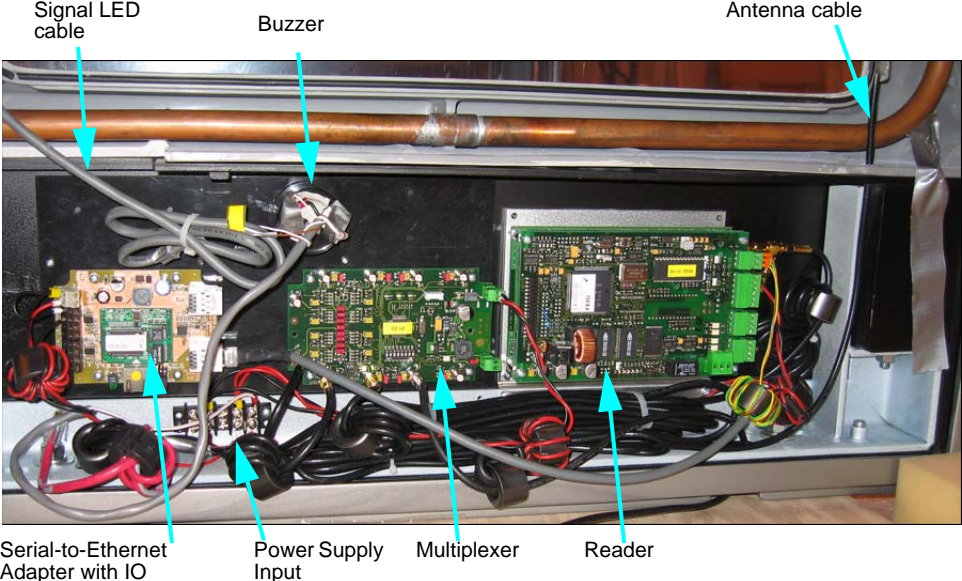


Figure 1.1 Antenna construction without frame side pieces and cover plates

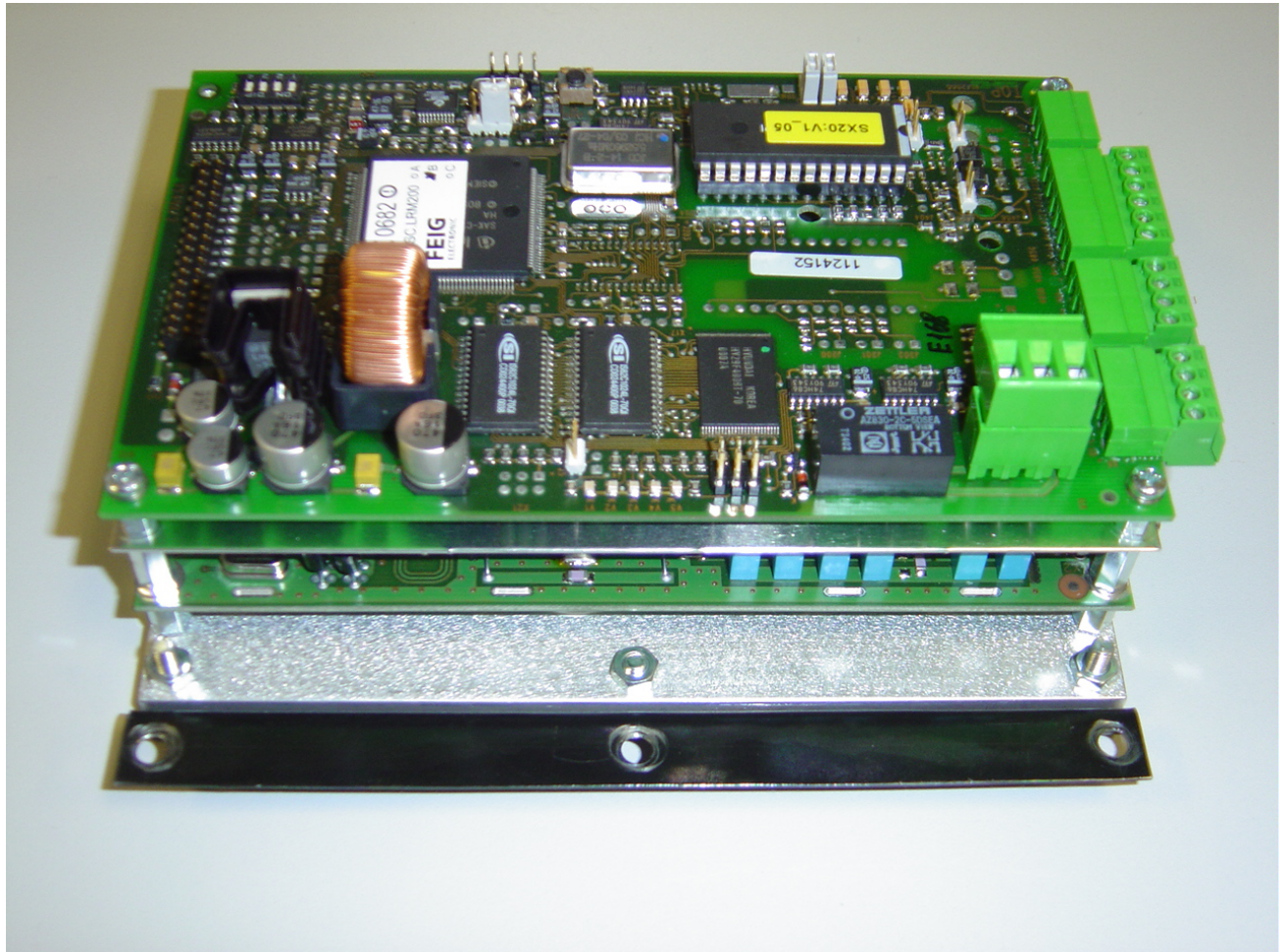
Electronics Bay of Master Gate

The following are the components found in the electronics bay of the Master gate.



6 Annex C: Internal Photographs of the Equipment

Photo 1: LR200



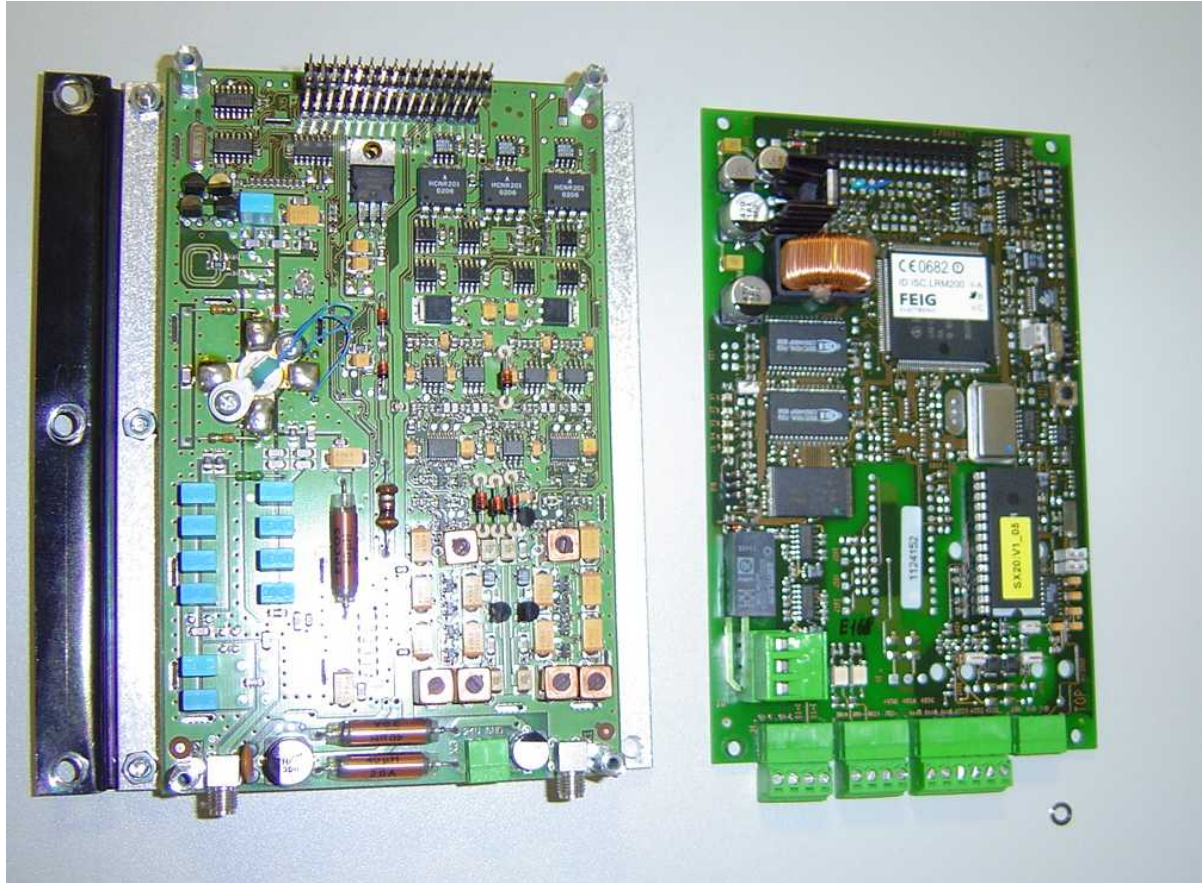
REFERENCE NUMBER(S) OF TEST EQUIPMENT USED :
(see test equipment listing)

Photo 2:



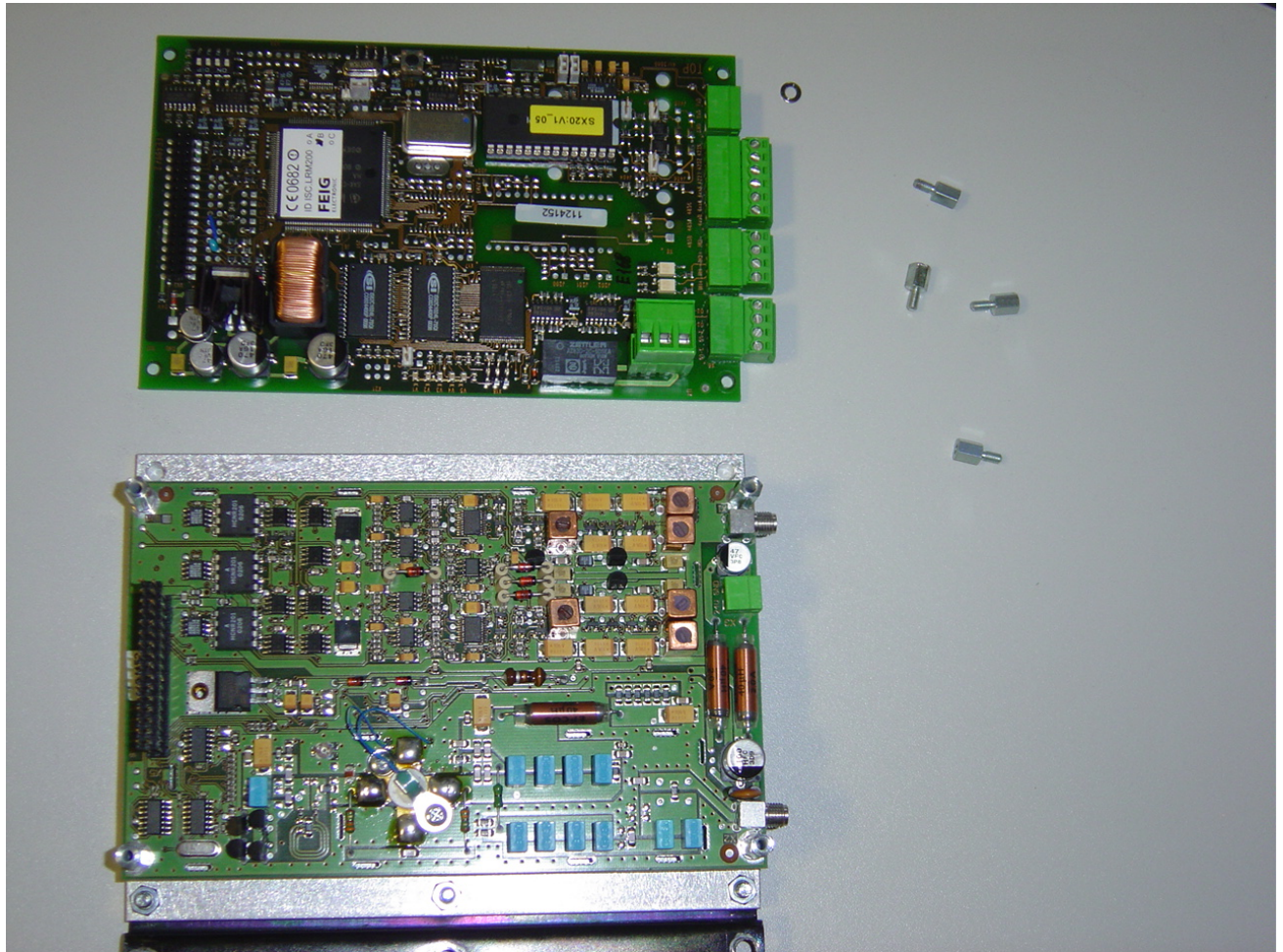
REFERENCE NUMBER(S) OF TEST EQUIPMENT USED :
(see test equipment listing)

Photo 3



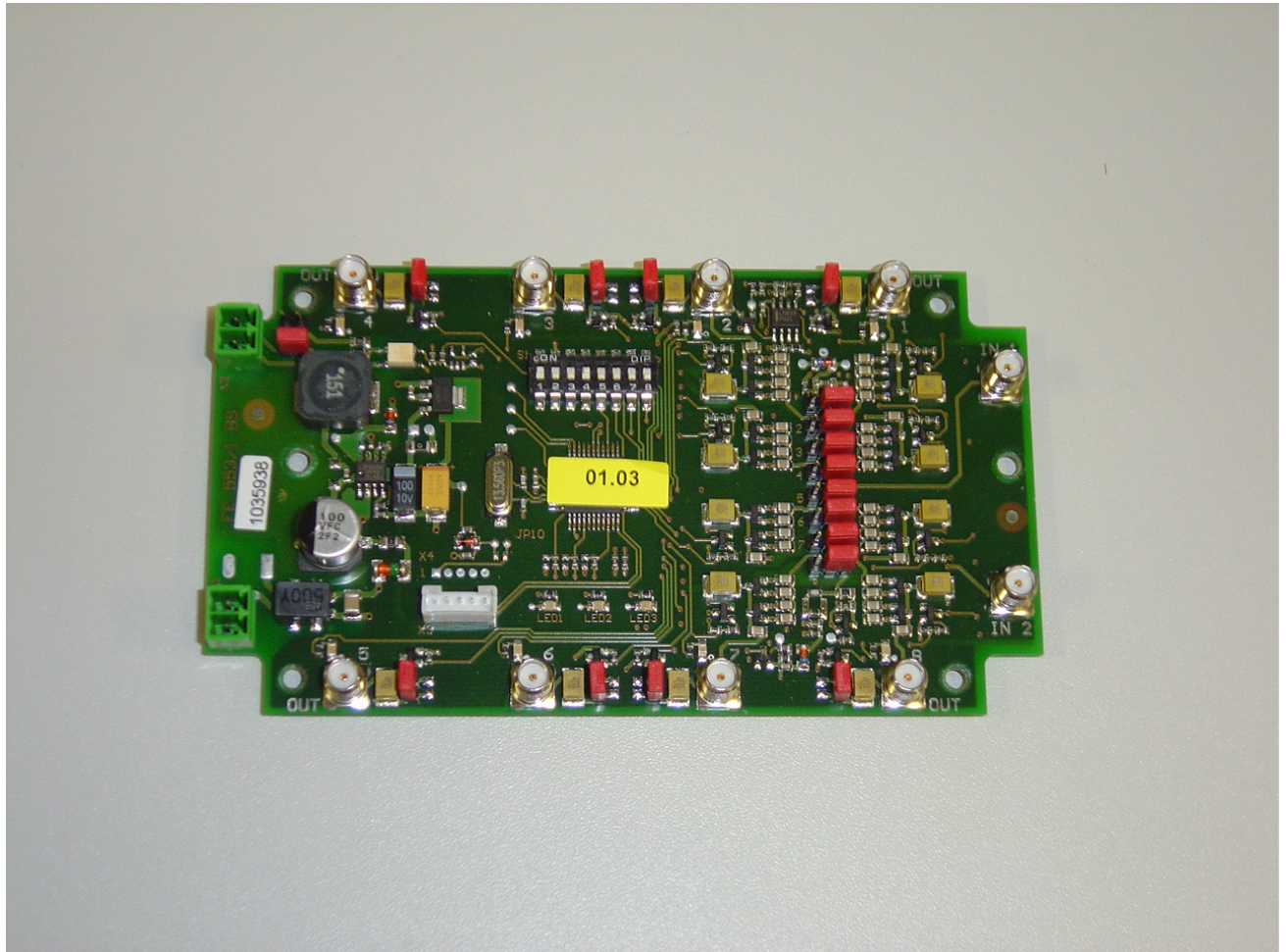
REFERENCE NUMBER(S) OF TEST EQUIPMENT USED :
(see test equipment listing)

Photo 4



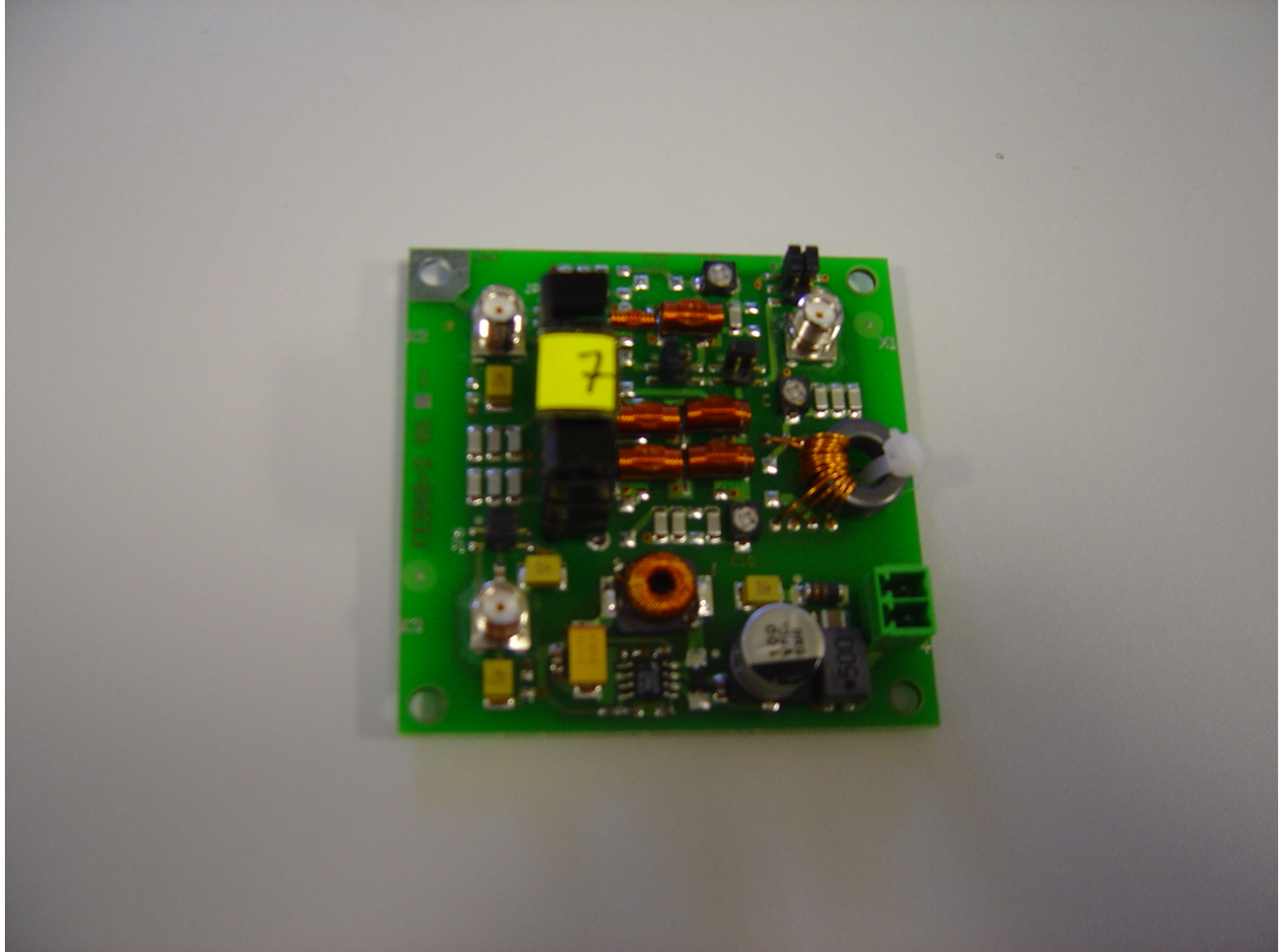
REFERENCE NUMBER(S) OF TEST EQUIPMENT USED :
(see test equipment listing)

Photo 5: Multiplexer



REFERENCE NUMBER(S) OF TEST EQUIPMENT USED :
(see test equipment listing)

Photo 6: Power splitter



REFERENCE NUMBER(S) OF TEST EQUIPMENT USED :
(see test equipment listing)