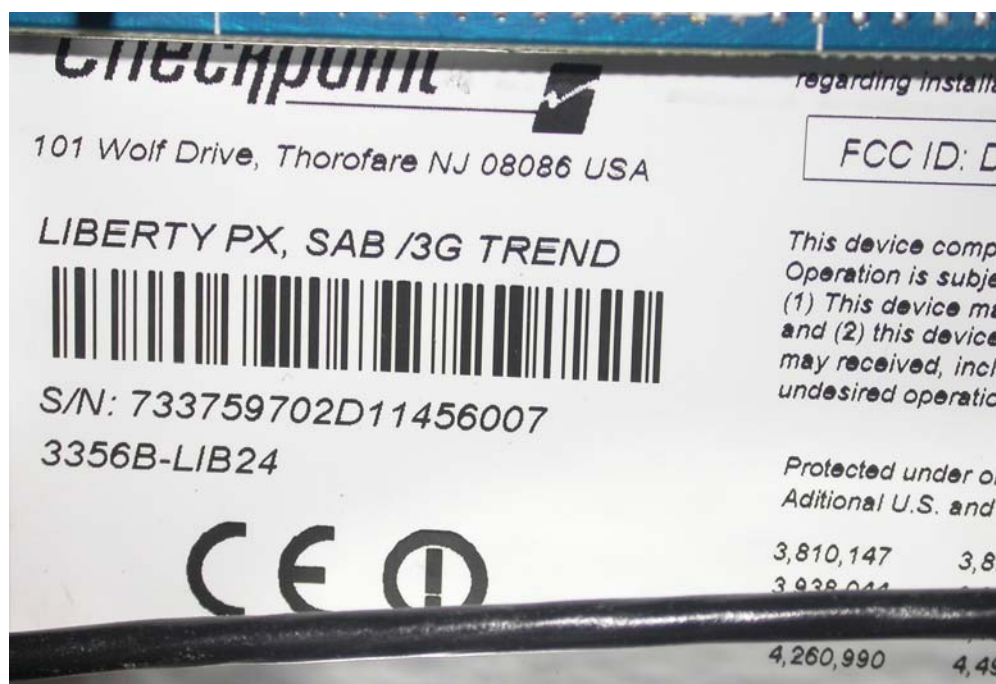
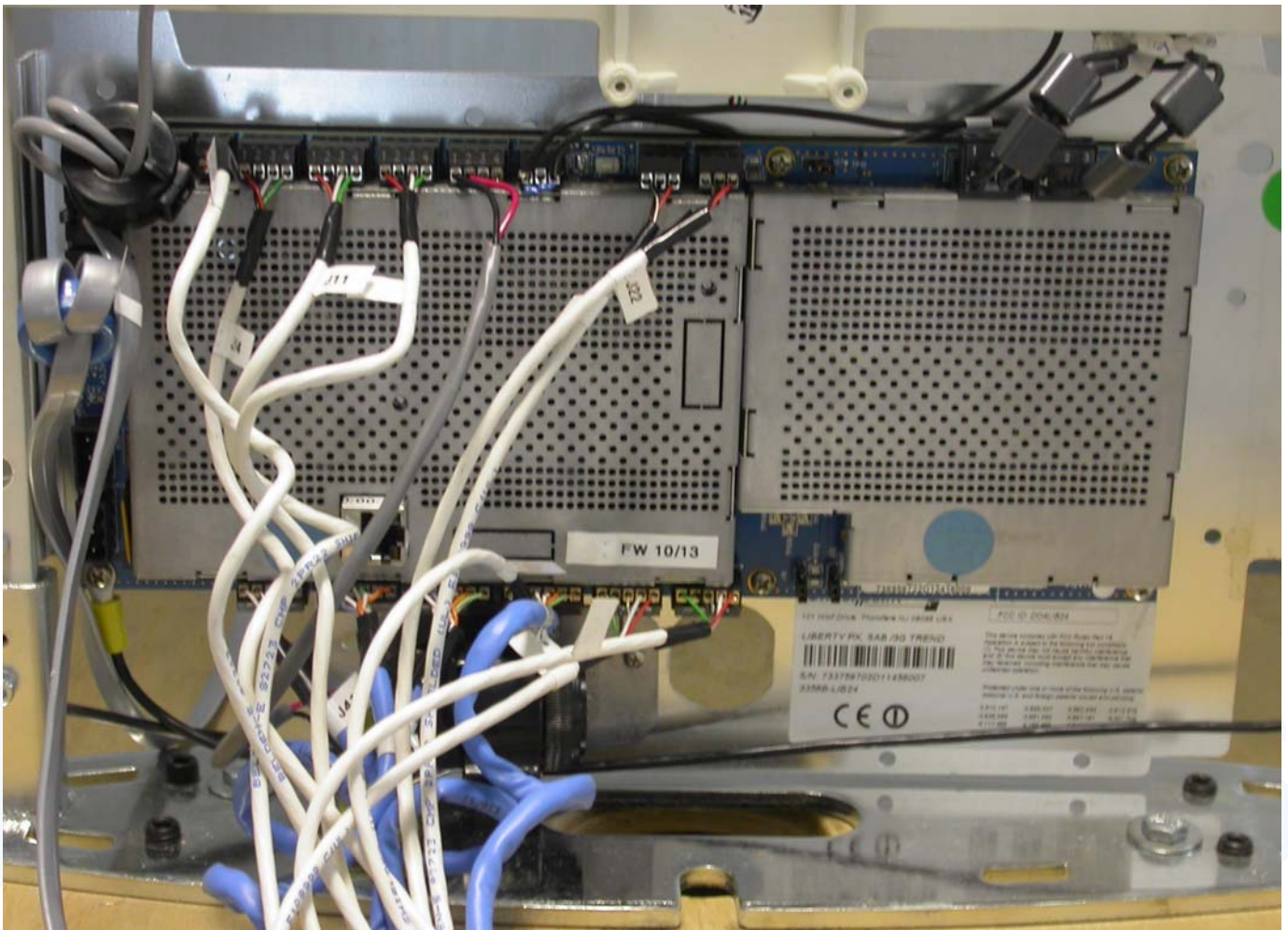


3 EQUIPMENT UNDER TEST

3.1 Photo documentation of the EuT



FCC ID: DO4EMRLDUP



FCC ID: DO4EMRLDUP

GlobTek PSU:



Checkpoint®

ITE POWER SUPPLY(开关电源适配器)

CHECKPOINT P/N(料号):7375794

GLOBTEK P/N(料号):GS-599 UF

MODEL(型号):GT-2S5024D-R

INPUT(输入):100-240V~1.6A MAX,50-60Hz,60-70VA

OUTPUT(输出):+24V === 2.1A

OUTPUT POWER(输出功率):50W MAX

Checkpoint **GlobTek, Inc.**
KETI
HU10040-4014A
품명: 적류전원장치
모델명: GT-2S5024D-R
정격입력: 100-240V~50-60Hz 1.6A
정격출력: DC 24V, 2.1A
A/S 센터: GlobTek, Inc. Tel) 02-3665-3367
제조사: 세니 컴퓨터 테크놀로지 유한회사
제조국: 중국

LEVEL 3 **UL** LISTED 6D44 US E170507 I.T.E. POWER SUPPLY

GS TÜV Rheinland

CE

N4292 Q04758

SAE A005049 **LPS**

PS CHECKPOINT JAPAN

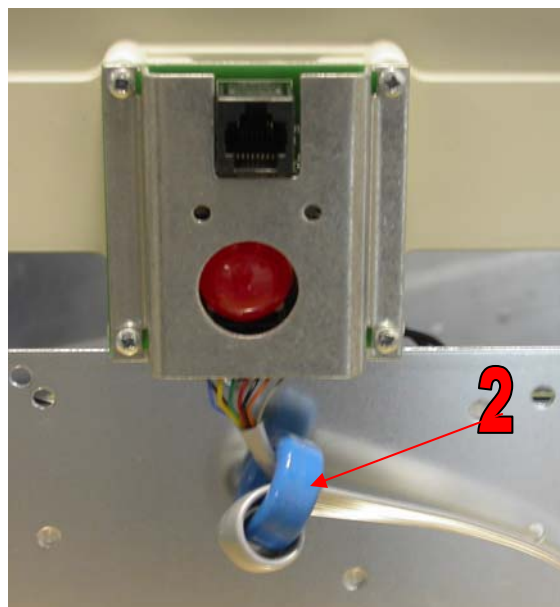
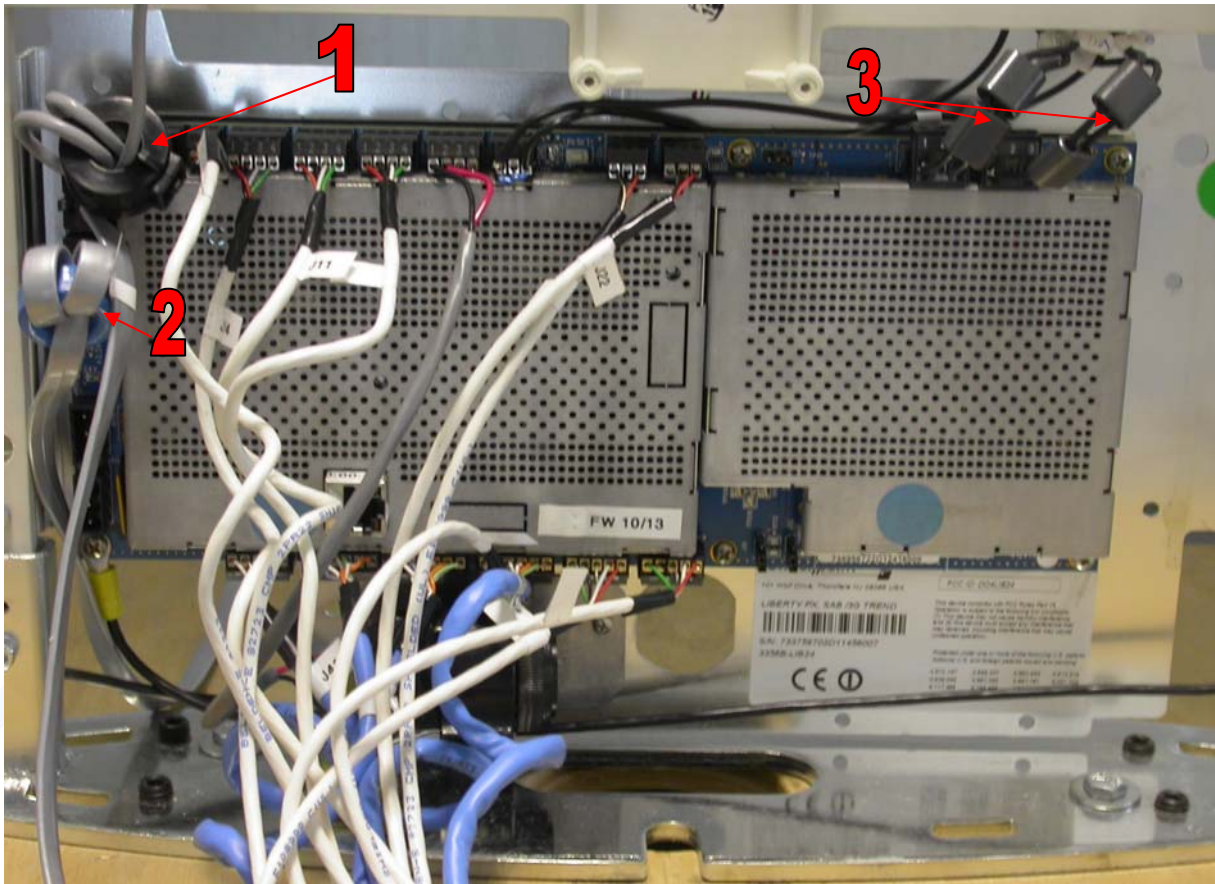
RED:+
BLACK:COM

GlobTek, Inc. MADE IN CHINA 中国制造

CPC

RoHS00984803/06

3.2 Ferrite Locations





Ferrite Locations:

1. Fair Rite P/N 284760 (Order No 0443806406) – Add a ferrite on the end of the People Counter Sensor Cable with three turns through the ferrite.
2. Fair Rite P/N 7118986 (Order No B6429-L618-X35) – Add a ferrite on each end of the Badge Board Cable with three turns through the ferrite.
3. Fair Rite P/N (Order No 2865-000-202) – Add two ferrites on the end of the Tx1 and Tx2 connection with one turn.
4. Fair Rite P/N 284760 (Order No 0443806406) – Add a ferrite on the end of the DC Output cable of the GlobTek PSU with three turns through the ferrite.