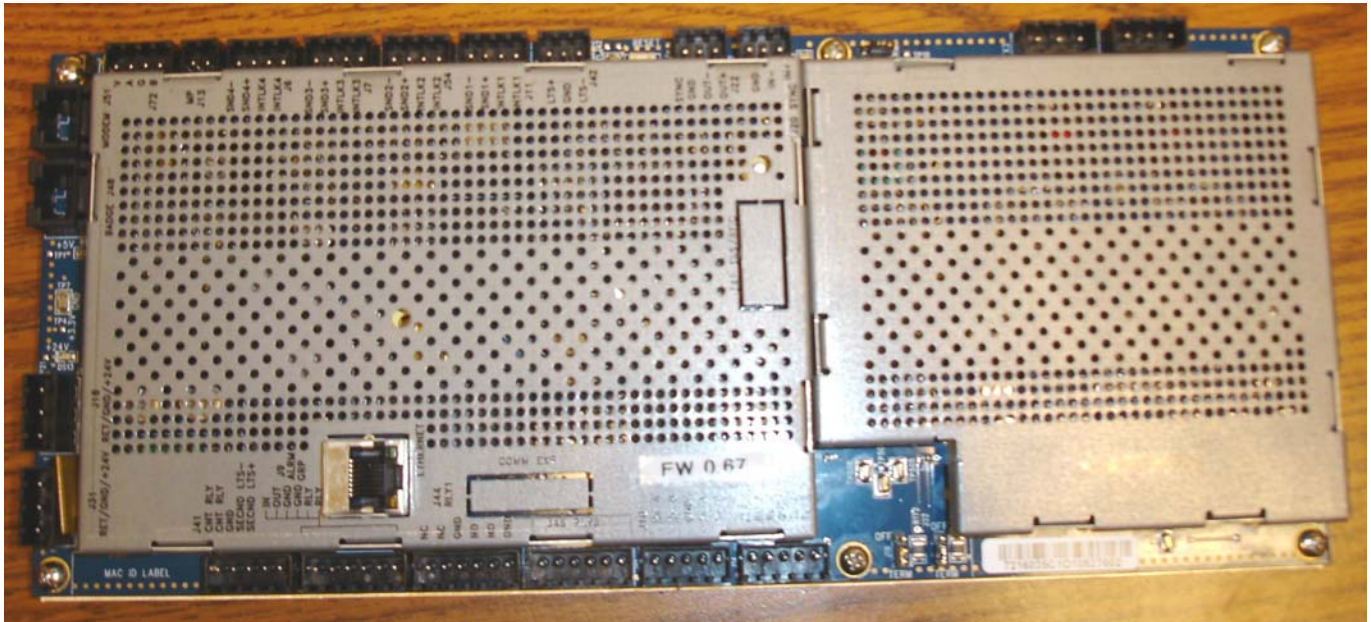
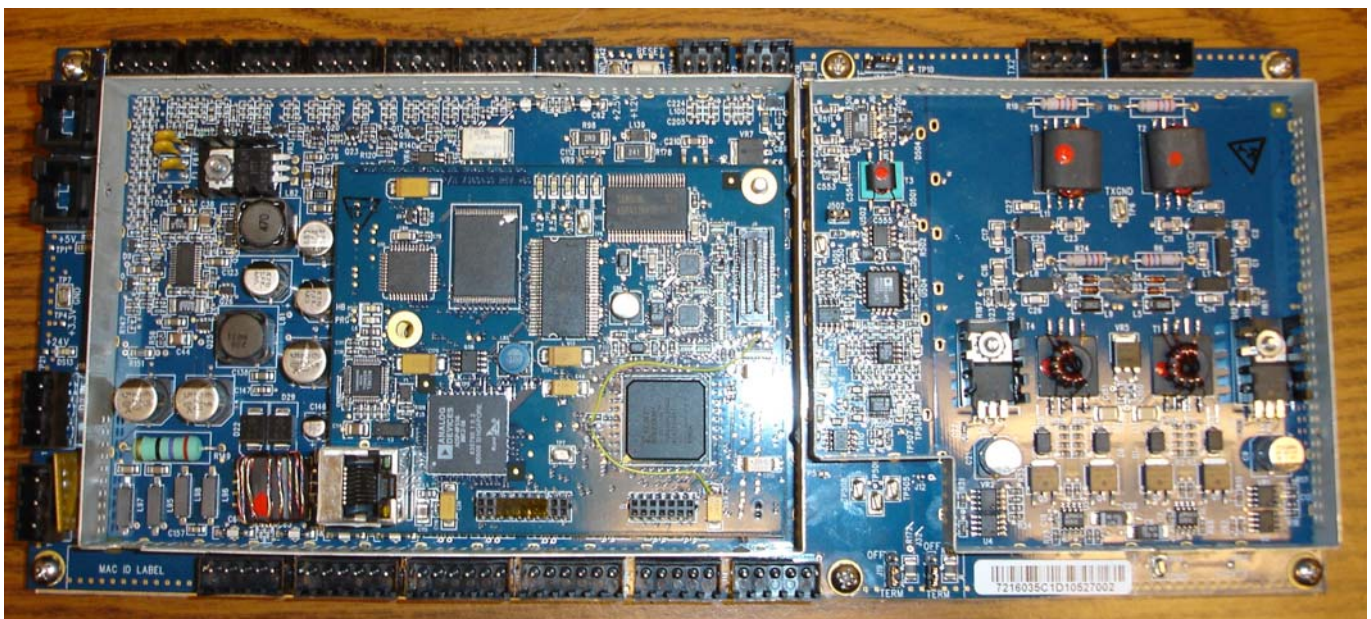


DO4EMRLDUP & D04EMRLDPX CLASS II

<u>File name</u>	<u>Description</u>
DSC00823.JPG	Emerald pcb with EMI shield cover and backplate
DSC00824.JPG	Emerald pcb with EMI shield cover removed, backplate present
DSC00825.JPG	Rear side of Emerald Main pcb with EMI shield cover removed
DSC00826.JPG	Internal photo of Emerald Main pcb, rev *61
DSC00827.JPG	Internal photo of Emerald CPU pcb, rev *61
DSC00828.JPG	Rear side of Emerald CPU pcb, rev *61
DSC00829.JPG	Another Internal photo of Emerald Main pcb, rev *61, CPU pcb removed

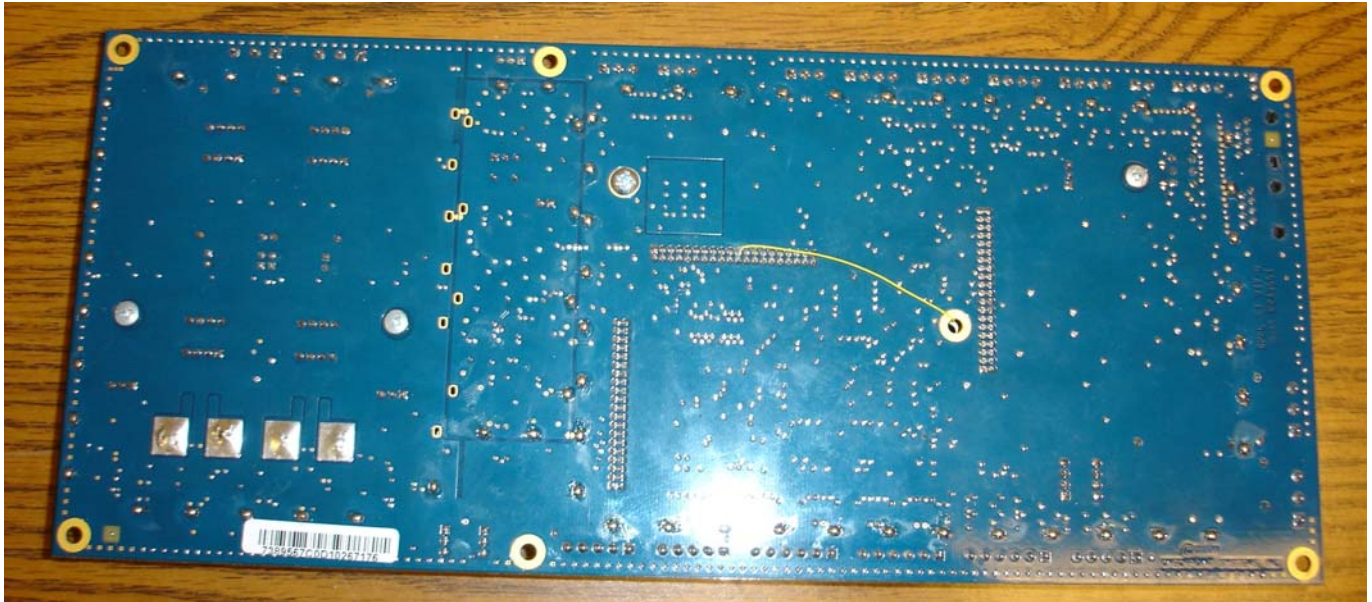


DSC00823

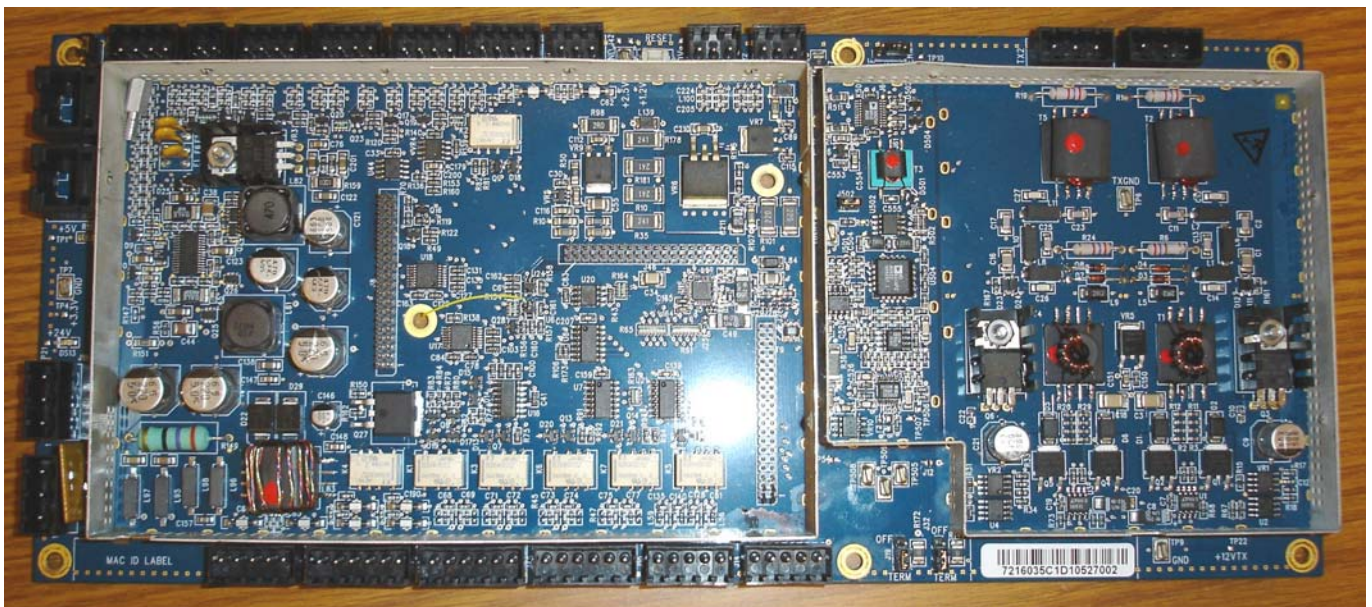


DSC00824

DO4EMRLDUP & D04EMRLDPX CLASS II

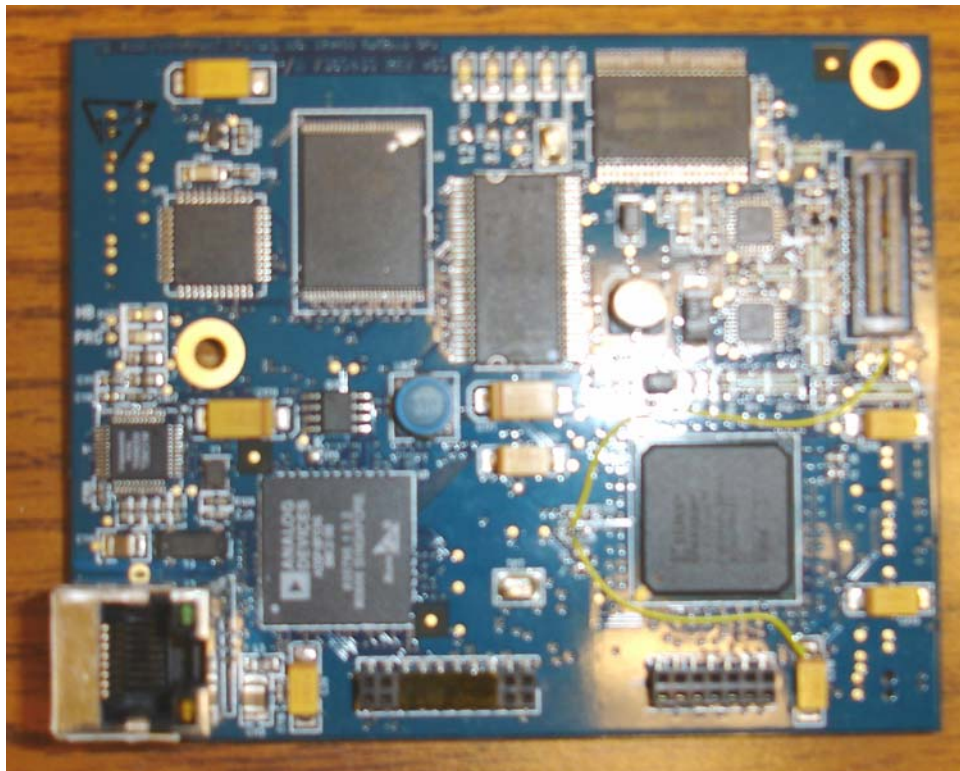


DSC00825



DSC00826

DO4EMRLDUP & D04EMRLDPX CLASS II

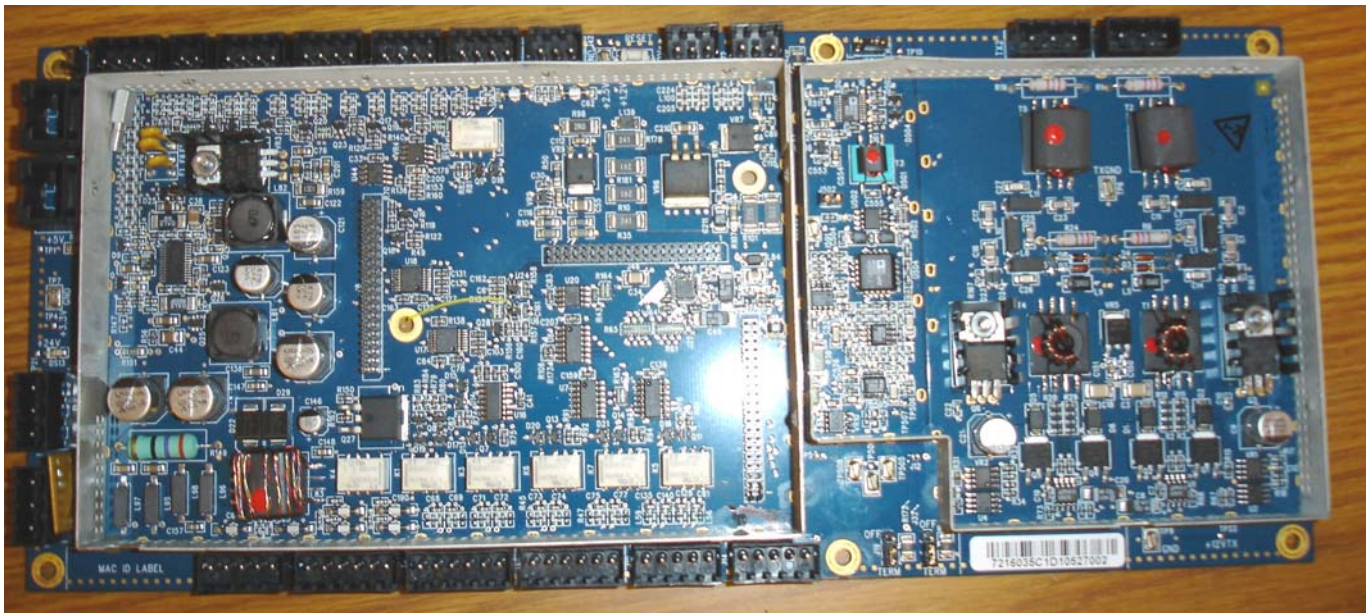


DSC00827



DSC00828

DO4EMRLDUP & D04EMRLDPX CLASS II



DSC00829