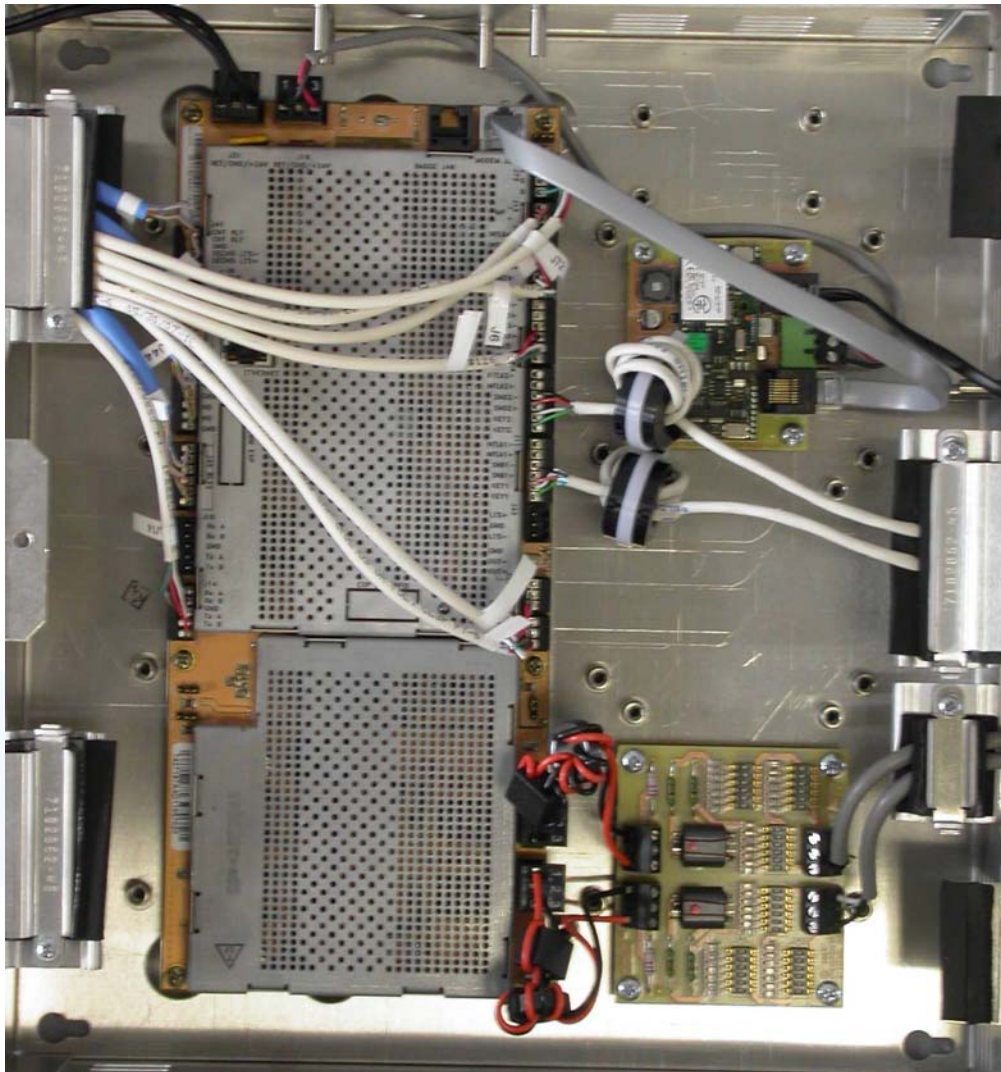


FCC ID:DO4CP11

Counterpoint XI chassis open cover without power line filter board:



Checkpoint 

101 Wolf Drive, Thorofare NJ 08086 USA

EVOLVE DEACT CHASSIS

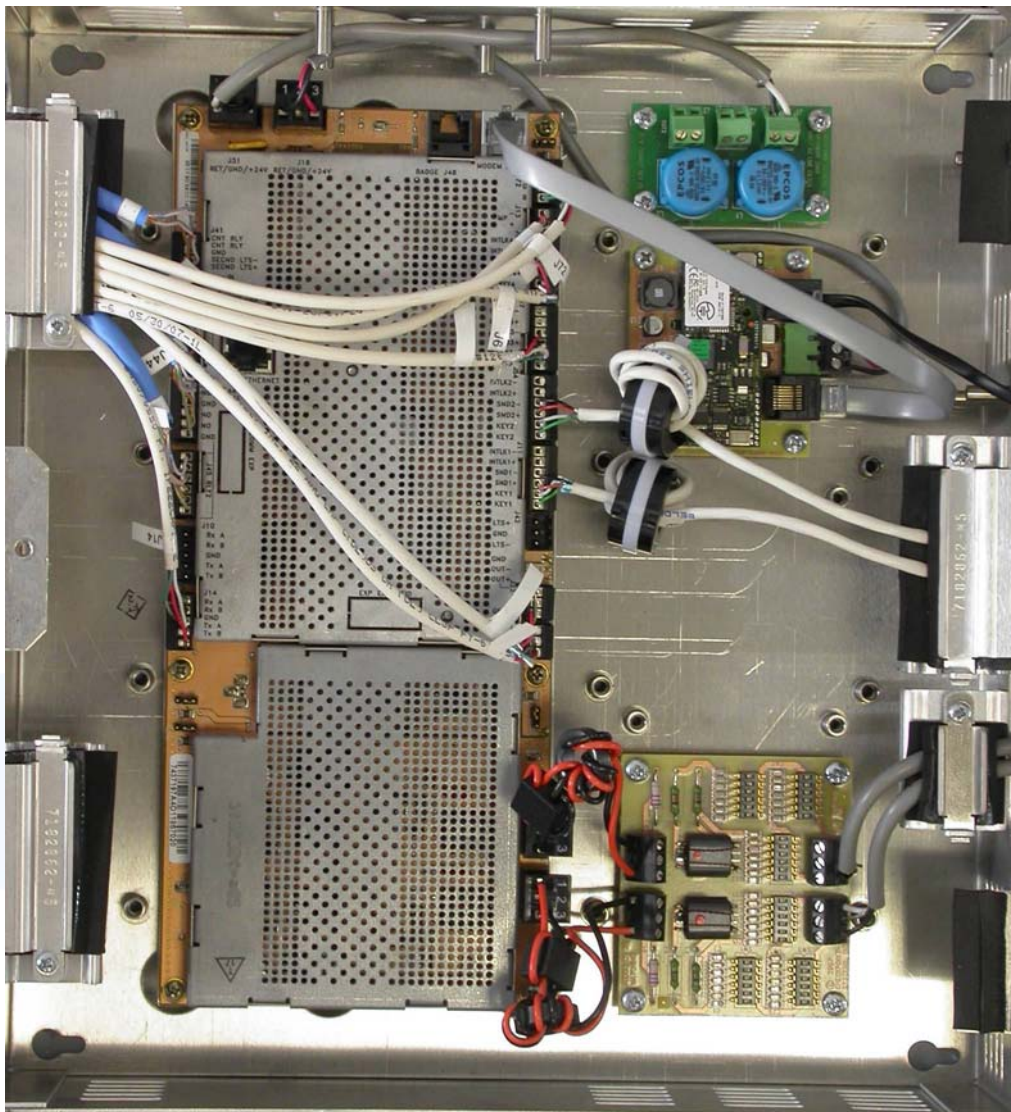


S/N: 7870431P1D11877026

No user serviceable parts. Refer to owners' manual regarding installation.

This device complies with Part 15 of the FCC Rules. Operation is subject to the following two conditions: (1) this device may not cause harmful and (2) this device must accept any interference received, including interference that may cause undesired operation.

Counterpoint XI chassis open cover with power line filter board:



Checkpoint 

101 Wolf Drive, Thorofare NJ 08086 USA

EVOLVE DEACT CHASSIS

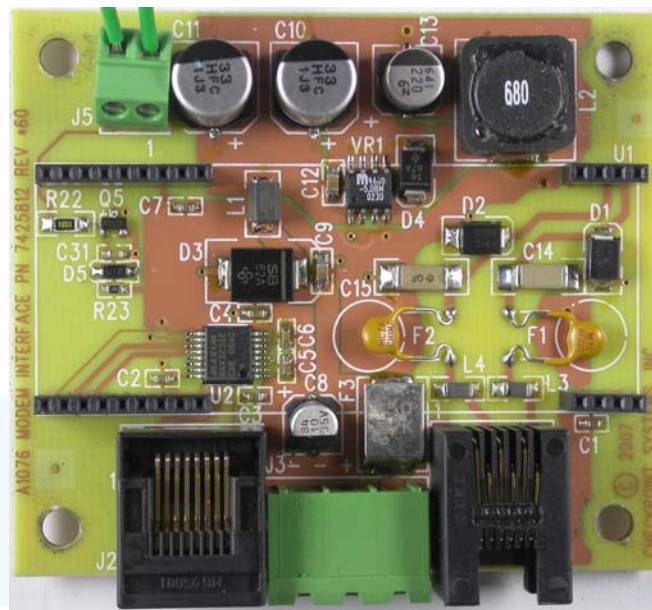
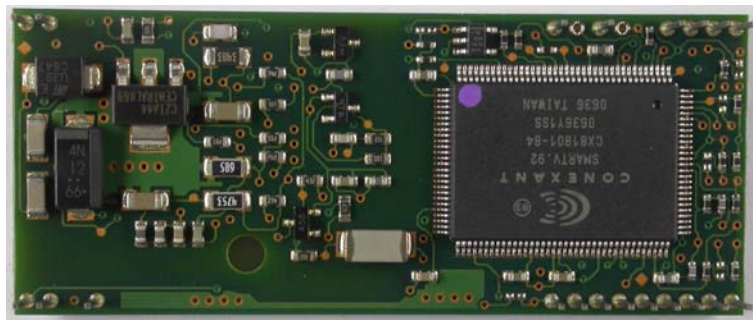


S/N: 7870431P1D11877015

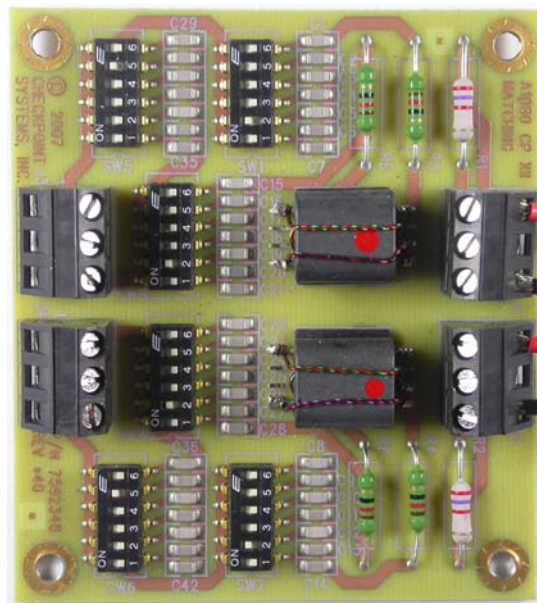
No user serviceable parts. Refer to owners' manual regarding installation.

This device complies with Part 15 of the FCC Rules. Operation is subject to the following two conditions: (1) this device may not cause harmful and (2) this device must accept any interference received, including interference that may cause undesired operation.

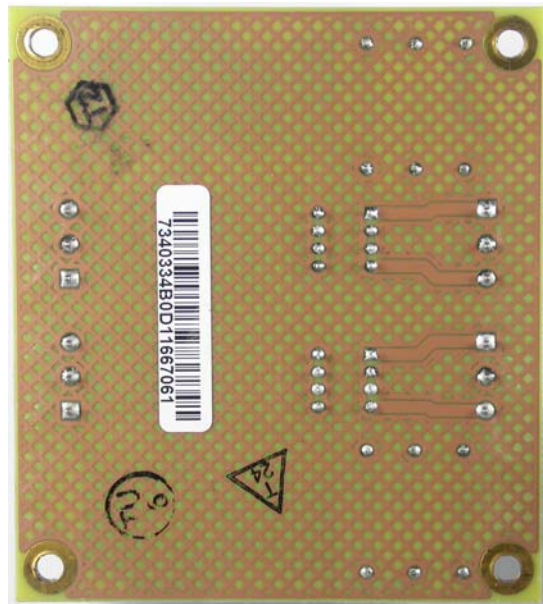
FCC ID:DO4CP11



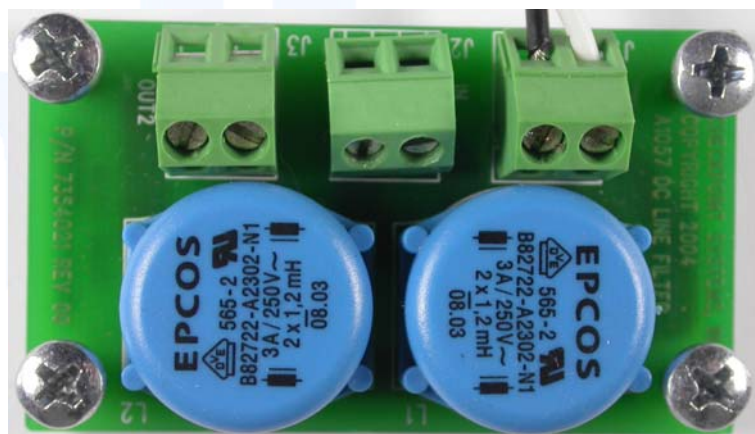
Matching Board:



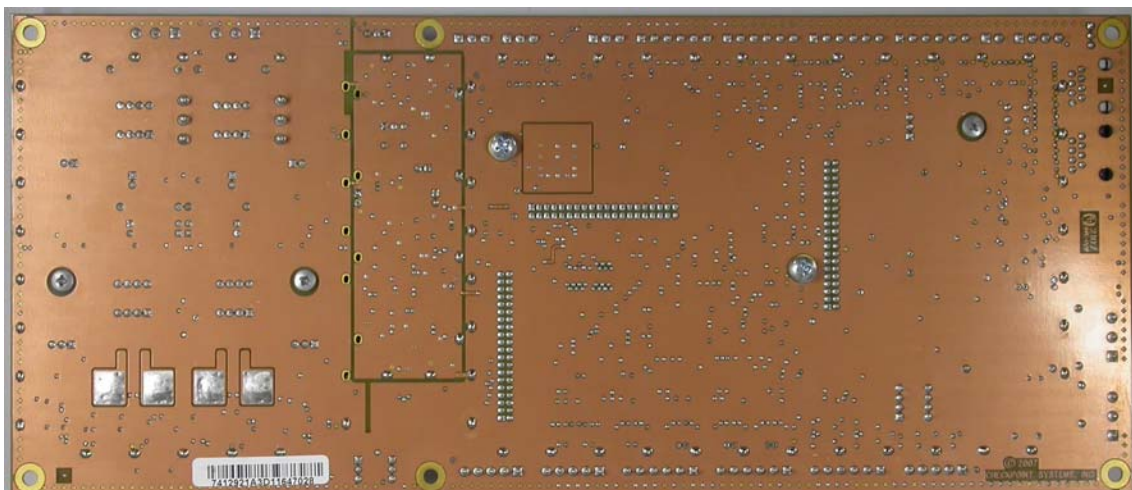
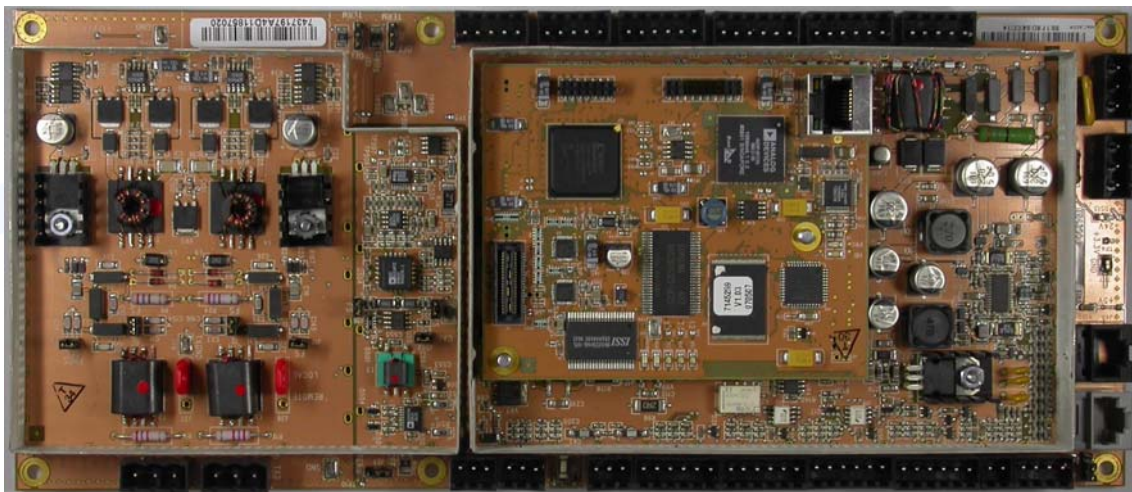
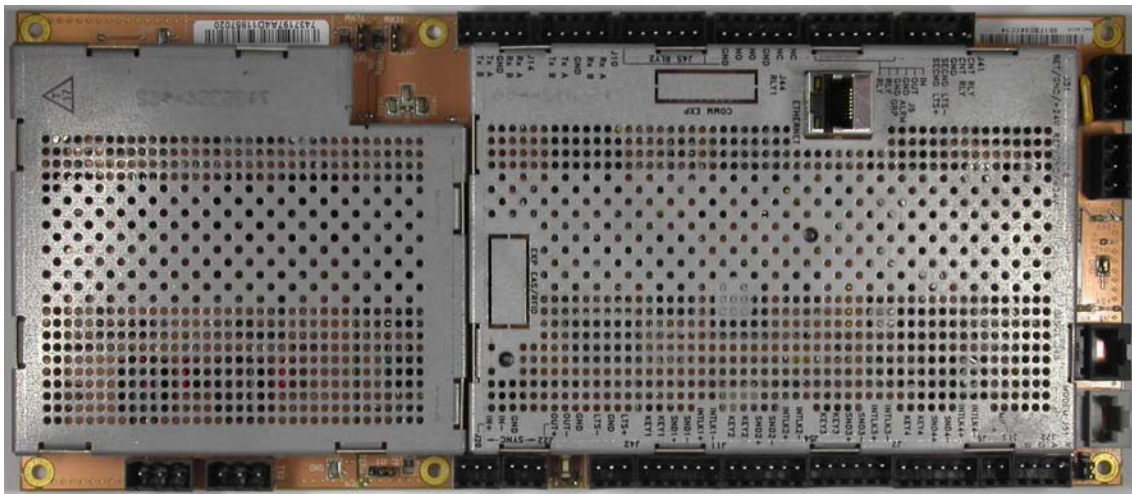
FCC ID:DO4CP11



Power line filter board:



Emerald electronic:



FCC ID:DO4CP11

