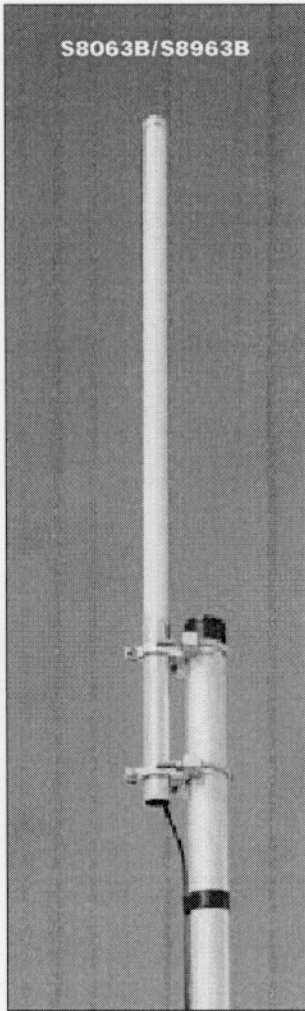
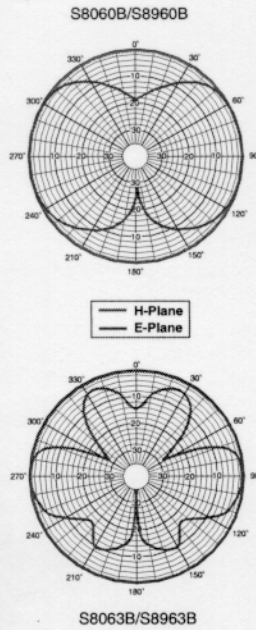


S8060B/S8960B



S8063B/S8963B

These two pages illustrate three styles of antennas. Their construction is very similar but they vary in gain. In general, your best choice is the antenna with the least gain that will do the job well. This keeps the cost at a minimum. These antennas are all housed in tough fiberglass enclosures. They are built on very repeatable fiberglass substrates. The larger two models feature stainless steel U-bolts as mounting fixtures while the small 0 dB gain antennas use economical stainless steel clamps. The pigtail mounted connectors allow for absolute waterproofing of the connection between the antenna and the transmission line by the installer. With this broad selection, the right antenna for your applications is within easy reach.

### 800/900 MHz OMNI SELECTOR CHART

Model	Freq. MHz	Gain dBd	VSWR (Nominal)	Bandwidth 1.5:1 MHz	-3dB bwwidth E-Plane*	Type (Female)	Height In (cm)	Weight lb (kg)	W/sur Area ft <sup>2</sup> (m <sup>2</sup> )	W/survival mph (kph)	Pigtail in (cm)
S8060B	806-868	0	1.5:1	62	75	N	17-1/2 (44.5)	0.56 (0.25)	0.083 (0.009)	125 (200)	17
S8063B	806-868	3	1.5:1	62	45	N	30-3/4 (78)	1.19 (0.53)	0.176 (0.016)	125 (200)	23
S8064B	806-868	4	1.5:1	62	25	N	42-1/8 (107)	1.56 (0.70)	0.22 (0.02)	125 (200)	23
S8240B	824-896	0	1.5:1	62	75	N	17-1/2 (44.5)	0.56 (0.25)	0.083 (0.009)	125 (200)	17
S8243B	824-896	3	1.5:1	62	45	N	30-3/4 (78)	1.19 (0.53)	0.176 (0.016)	125 (200)	23
S8244B	824-896	4	1.5:1	62	25	N	42-1/8 (107)	1.56 (0.70)	0.22 (0.02)	125 (200)	23
S8800B	880-960	0	1.5:1	62	75	N	17-1/2 (44.5)	0.56 (0.25)	0.083 (0.009)	125 (200)	17
S8803B	880-960	3	1.5:1	62	45	N	30-3/4 (78)	1.19 (0.53)	0.176 (0.016)	125 (200)	23
S8804B	880-960	4	1.5:1	62	25	N	42-1/8 (107)	1.56 (0.70)	0.22 (0.02)	125 (200)	23
S8960B	896-960	0	1.5:1	64	75	N	17-1/2 (44.5)	0.56 (0.25)	0.083 (0.009)	125 (200)	17
S8963B	896-960	3	1.5:1	64	45	N	30-3/4 (78)	1.19 (0.53)	0.176 (0.016)	125 (200)	23
S8964B	896-960	4	1.5:1	64	25	N	42-1/8 (107)	1.56 (0.70)	0.22 (0.02)	125 (200)	23

Common Specifications: Power handling -150 Watts; Element material - plated copper laminate; Enclosure material - fiberglass  
Mounting style - tube end; Maximum mast diameter - 2 in (5.1 cm)



**NOTES:**

1. SPECIFICATIONS: ANTENNA, VERTICAL, HALF WAVE, POLAR, 915 MHZ

- 1.0 ELECTRICAL:
  - 1.1 ANTENNA TYPE: HALF WAVE DIPOLE WHIP
  - 1.2 POLARIZATION: VERTICAL
  - 1.3 EFFICIENCY: 75% MINIMUM
  - 1.4 IMPEDANCE: 50 Ohms NOMINAL
  - 1.5 BANDWIDTH FOR <math>V\_{SWR} < 2.25</math>: 32 MHZ
  - 1.6 CENTER FREQUENCY: 915 MHZ
  - 1.7 TEST CONDITIONS: 6" X 6" ALUM. PLATE GROUND PLANE
- 2.0 MECHANICAL:
  - 2.1 CONNECTOR TYPE: POLARIZED TNC FEMALE
  - 2.2 COVERING/COATINGS: BLACK POLYURETHANE OR EQUIVALENT
  - 2.3 OVERALL LENGTH: 9.0" MAXIMUM

2. ONLY THE ITEM(S) DESCRIBED ON THIS DRAWING WHEN PROCURED FROM THE VENDOR(S) LISTED HEREON IS APPROVED BY LXE FOR USE IN THE APPLICATION(S) SPECIFIED HEREON. A SUBSTITUTE ITEM SHALL NOT BE USED WITHOUT PRIOR TESTING AND APPROVAL BY THE LXE ENGINEER IN CHARGE OF THIS PROJECT.

3. IDENTIFICATION OF THE APPROVED SOURCE(S) HEREON IS NOT TO BE CONSTRUED AS A GUARANTEE OF PRESENT OR CONTINUED AVAILABILITY AS A SOURCE OF SUPPLY FOR THE ITEM(S) DESCRIBED ON THIS DRAWING.

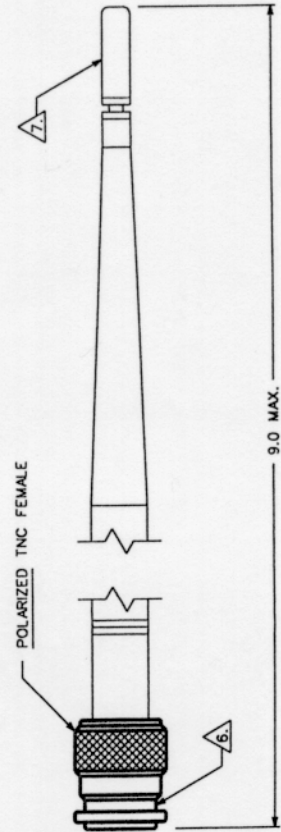
APPROVED SOURCE(S) OF SUPPLY	
SUGGESTED SOURCE(S)	VENDOR PART #
CENTURION INTERNATIONAL INC. P.O. BOX 82846 LINCOLN, NB, 68501	CAF28526
HYTENNAS INC. 13250 95th STREET NORTH LARGO, FL, 34643	10556

**SOURCE CONTROL DRAWING**

THIS DOCUMENT AND THE DATA DISCLOSED HEREON OR HEREWITH IS NOT TO BE REPRODUCED, USED OR DISCLOSED IN WHOLE OR IN PART TO ANYONE WITHOUT THE PERMISSION OF LXE, INC.

REV	DESCRIPTION	APPROVED	DATE
A	ENGINEERING RELEASE	B. ANDERSON	4-23-92
B	INCOMP. CNO1 JMB 6-29-92	B. ANDERSON	7-15-92
C	INCOMP. CNO2 JMB 6-3-96	<i>[Signature]</i>	6/7/96

- 5. SEE LXE DRAWING \* 148764 FOR MORE DETAIL ON INTERFACE DIMENSIONS AND INTERNAL FEATURES OF A POLARIZED TNC FEMALE CONNECTOR.
- 6. DARK BLUE COLOR BAND TO IDENTIFY ANTENNA WITH A POLARIZED TNC CONNECTOR.
- 7. ANTENNA WILL BE SHIPPED WITH BLUE CAP TO INDICATE POLARIZED TNC CONNECTOR.

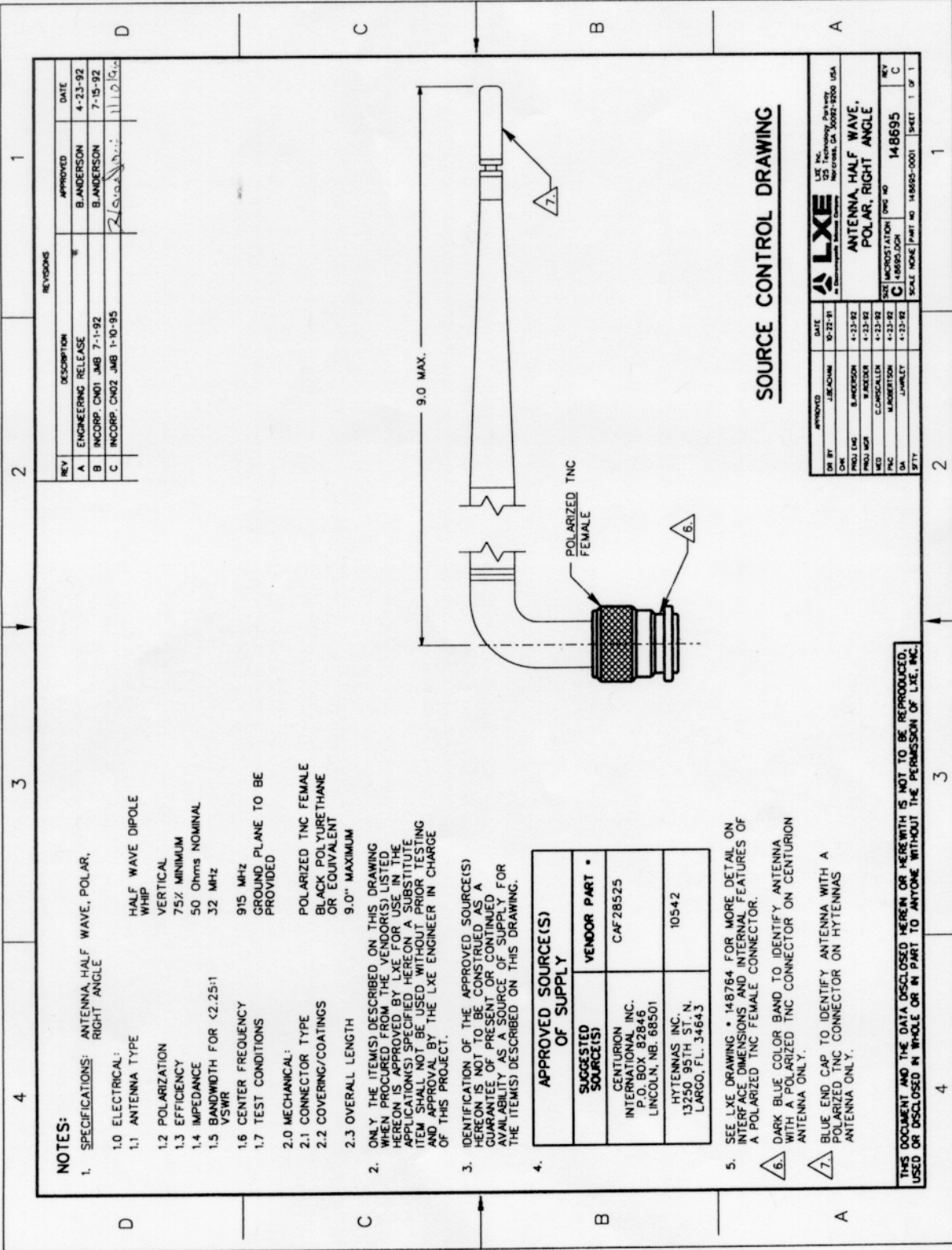


DATE	APPROVED	DATE	APPROVED
0-22-91	J. BROWN	4-23-92	B. ANDERSON
4-23-92	B. ANDERSON	4-23-92	B. ANDERSON
4-23-92	M. BAKER	4-23-92	C. CARROLL
4-23-92	M. BAKER	4-23-92	M. BAKER
4-23-92	M. BAKER	4-23-92	M. BAKER
4-23-92	M. BAKER	4-23-92	M. BAKER
4-23-92	M. BAKER	4-23-92	M. BAKER
4-23-92	M. BAKER	4-23-92	M. BAKER

**LXE** Inc.  
125 Technology Parkway  
Norcross, GA 30092-2500 USA

ANTENNA, VERTICAL, HALF WAVE,  
POLAR, 915 MHZ

SIZE MICROSTATION DWG NO 148694  
SCALE NONE PART NO 148694-0001 SHEET 1 OF 1



**NOTES:**

1. SPECIFICATIONS: ANTENNA, HALF WAVE, POLAR, RIGHT ANGLE
  - 1.1 ANTENNA TYPE: HALF WAVE DIPOLE WHIP
  - 1.2 POLARIZATION: VERTICAL
  - 1.3 EFFICIENCY: 75% MINIMUM
  - 1.4 IMPEDANCE: 50 Ohms NOMINAL
  - 1.5 BANDWIDTH FOR  $\leq 2.25:1$  VSWR: 32 MHz
  - 1.6 CENTER FREQUENCY: 915 MHz
  - 1.7 TEST CONDITIONS: GROUND PLANE TO BE PROVIDED
- 2.0 MECHANICAL:
  - 2.1 CONNECTOR TYPE: POLARIZED TNC FEMALE
  - 2.2 COVERING/COATINGS: BLACK POLYURETHANE OR EQUIVALENT
  - 2.3 OVERALL LENGTH: 9.0" MAXIMUM
2. ONLY THE ITEM(S) DESCRIBED ON THIS DRAWING WHEN PROCURED FROM THE VENDOR(S) LISTED HEREON IS APPROVED BY LXE FOR USE IN THE APPLICATION(S) SPECIFIED HEREON. A SUBSTITUTE ITEM SHALL NOT BE USED WITHOUT PRIOR TESTING AND APPROVAL BY THE LXE ENGINEER IN CHARGE OF THIS PROJECT.
3. IDENTIFICATION OF THE APPROVED SOURCE(S) HEREON IS NOT TO BE CONSIDERED A WARRANTY, OR A GUARANTEE, OR A STATEMENT OF AVAILABILITY, AS A SOURCE OF SUPPLY FOR THE ITEM(S) DESCRIBED ON THIS DRAWING.

APPROVED SOURCE(S) OF SUPPLY	
SUGGESTED SOURCE(S)	VENDOR PART #
CENTURION INTERNATIONAL INC. P.O. BOX 82846 LINCOLN, NB. 68501	CAF28525
HYTENNAS INC. 13250 95TH ST. N. LARGO, FL. 34643	10542

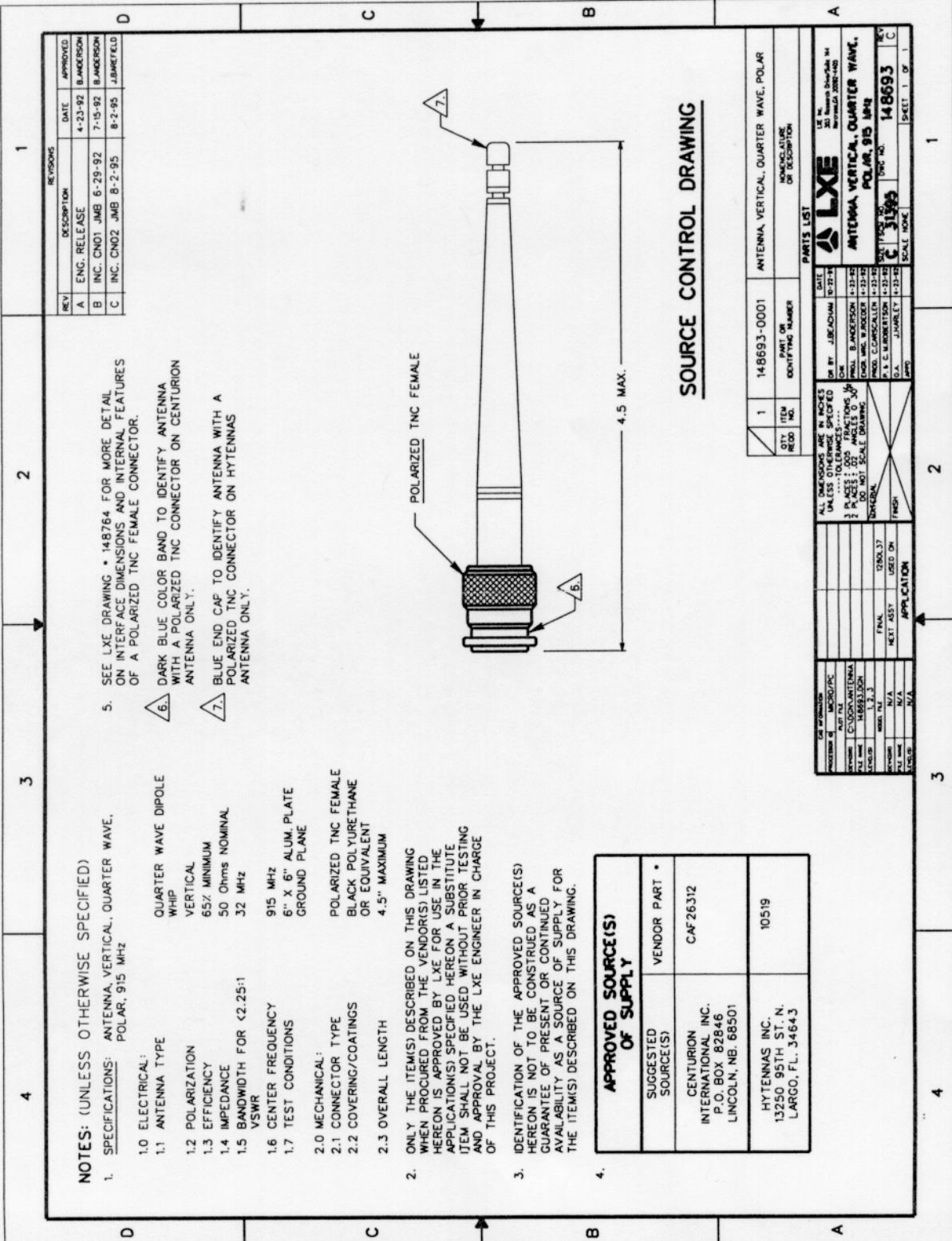
5. SEE LXE DRAWING \* 148764 FOR MORE DETAIL ON INTERFACE DIMENSIONS AND INTERNAL FEATURES OF A POLARIZED TNC FEMALE CONNECTOR.
  - 6. DARK BLUE COLOR BAND TO IDENTIFY ANTENNA WITH A POLARIZED TNC CONNECTOR ON CENTURION ANTENNA ONLY.
  - 7. BLUE END CAP TO IDENTIFY ANTENNA WITH A POLARIZED TNC CONNECTOR ON HYTENNAS ANTENNA ONLY.

**SOURCE CONTROL DRAWING**

REV	DESCRIPTION	APPROVED	DATE
A	ENGINEERING RELEASE	B. ANDERSON	4-23-92
B	IN CORP. CMO1 JMB 7-1-92	B. ANDERSON	7-15-92
C	IN CORP. CMO2 JMB 1-10-95	[Signature]	11-01-95

APPROVED	DATE	LXE INC.
J.E. ANDERSON	10-22-91	10000 W. CENTURION BLVD. LINCOLN, NB. 06501
B. ANDERSON	4-23-92	
W. ANDERSON	4-23-92	
C. ANDERSON	4-23-92	
M. ANDERSON	4-23-92	
J. ANDERSON	4-23-92	

THIS DOCUMENT AND THE DATA DISCLOSED HEREIN OR HEREWITH IS NOT TO BE REPRODUCED, USED OR DISCLOSED IN WHOLE OR IN PART TO ANYONE WITHOUT THE PERMISSION OF LXE, INC.



REV	DESCRIPTION	DATE	APPROVED
A	ENG. RELEASE	4-23-92	B. ANDERSON
B	INC. CNO1 JMB 6-29-92	7-15-92	B. ANDERSON
C	INC. CNO2 JMB 8-2-95	8-2-95	J. BARKFIELD

- SEE LXE DRAWING \* 148764 FOR MORE DETAIL ON INTERFACE DIMENSIONS AND INTERNAL FEATURES OF A POLARIZED TNC FEMALE CONNECTOR.
- DARK BLUE COLOR BAND TO IDENTIFY ANTENNA WITH A POLARIZED TNC CONNECTOR ON CENTURION ANTENNA ONLY.
- BLUE END CAP TO IDENTIFY ANTENNA WITH A POLARIZED TNC CONNECTOR ON HYTENNAS ANTENNA ONLY.

- NOTES: (UNLESS OTHERWISE SPECIFIED)**
- SPECIFICATIONS: ANTENNA VERTICAL, QUARTER WAVE, POLAR, 915 MHZ
    - ELECTRICAL:
      - ANTENNA TYPE: QUARTER WAVE DIPOLE WHIP
      - POLARIZATION: VERTICAL
      - EFFICIENCY: 65% MINIMUM
      - IMPEDANCE: 50 Ohms NOMINAL
      - BANDWIDTH FOR  $\lambda/2.25:1$  VSWR: 32 MHZ
      - CENTER FREQUENCY: 915 MHZ
      - TEST CONDITIONS: 6" X 6" ALUM. PLATE GROUND PLANE
    - MECHANICAL:
      - CONNECTOR TYPE: POLARIZED TNC FEMALE
      - COVERING/COATINGS: BLACK POLYURETHANE OR EQUIVALENT
      - OVERALL LENGTH: 4.5" MAXIMUM

2. ONLY THE ITEM(S) DESCRIBED ON THIS DRAWING WHEN PROCURED FROM THE VENDOR(S) LISTED HEREON IS APPROVED BY LXE FOR USE IN THE APPLICATION(S) SPECIFIED HEREON. A SUBSTITUTE ITEM SHALL NOT BE USED WITHOUT PRIOR TESTING AND APPROVAL BY THE LXE ENGINEER IN CHARGE OF THIS PROJECT.

3. IDENTIFICATION OF THE APPROVED SOURCE(S) HEREON IS NOT TO BE CONSTRUED AS A GUARANTEE OF PRESENT OR CONTINUED AVAILABILITY AS A SOURCE OF SUPPLY FOR THE ITEM(S) DESCRIBED ON THIS DRAWING.

APPROVED SOURCE(S)	VENDOR PART #
CENTURION INTERNATIONAL INC. P.O. BOX 82846 LINCOLN, NB 68501	CAF26312
HYTENNAS INC. 13250 95TH ST. N. LARGO, FL. 34643	10519

**SOURCE CONTROL DRAWING**

QTY	1	ITEM NO.	148693-0001	PART OR IDENTIFYING NUMBER	ANTENNA VERTICAL, QUARTER WAVE, POLAR																				
<table border="1"> <tr> <td>DATE</td> <td>10-27-98</td> <td>BY</td> <td>J. BARKFIELD</td> </tr> <tr> <td>CHKD</td> <td>B. ANDERSON</td> <td>DATE</td> <td>11-23-92</td> </tr> <tr> <td>APP'D</td> <td>C. CARROLL</td> <td>DATE</td> <td>11-23-92</td> </tr> <tr> <td>DATE</td> <td>11-23-92</td> <td>BY</td> <td>P. E. K. ROBERTSON</td> </tr> <tr> <td>DATE</td> <td>11-23-92</td> <td>BY</td> <td>J. BARKFIELD</td> </tr> </table>						DATE	10-27-98	BY	J. BARKFIELD	CHKD	B. ANDERSON	DATE	11-23-92	APP'D	C. CARROLL	DATE	11-23-92	DATE	11-23-92	BY	P. E. K. ROBERTSON	DATE	11-23-92	BY	J. BARKFIELD
DATE	10-27-98	BY	J. BARKFIELD																						
CHKD	B. ANDERSON	DATE	11-23-92																						
APP'D	C. CARROLL	DATE	11-23-92																						
DATE	11-23-92	BY	P. E. K. ROBERTSON																						
DATE	11-23-92	BY	J. BARKFIELD																						

UNLESS OTHERWISE SPECIFIED	ALL DIMENSIONS ARE IN INCHES
3 PLACES: 0.005 FRACTIONS	3 PLACES: 0.005 ANGLES 0.50
UNLESS OTHERWISE SPECIFIED	UNLESS OTHERWISE SPECIFIED
FINISH	FINISH
USED ON	USED ON
APPLICATION	APPLICATION

PROCESSED BY	MICRO/PC
PLT FILE	148693-0001
SCALE	AS SHOWN
DATE	11-23-92
BY	J. BARKFIELD
CHKD	B. ANDERSON
APP'D	C. CARROLL
DATE	11-23-92
BY	P. E. K. ROBERTSON
DATE	11-23-92
BY	J. BARKFIELD

<p><b>LXE</b></p> <p>ANTENNA VERTICAL, QUARTER WAVE, POLAR, 915 MHZ</p>	
<p>148693</p>	<p>SCALE: 1 OF 1</p>