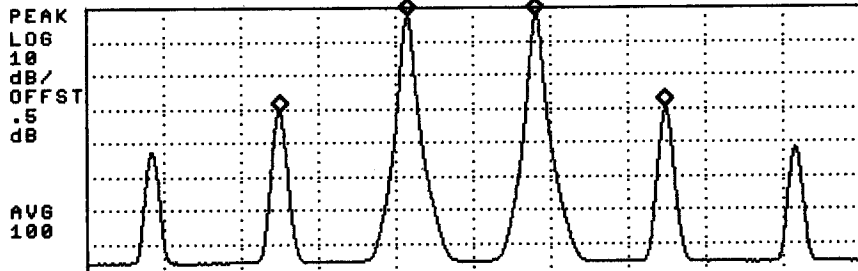


NADC

05:07:18 FEB 12, 2004

MKR 1.907500 GHz
-15.75 dBm

REF 15.0 dBm AT 30 dB



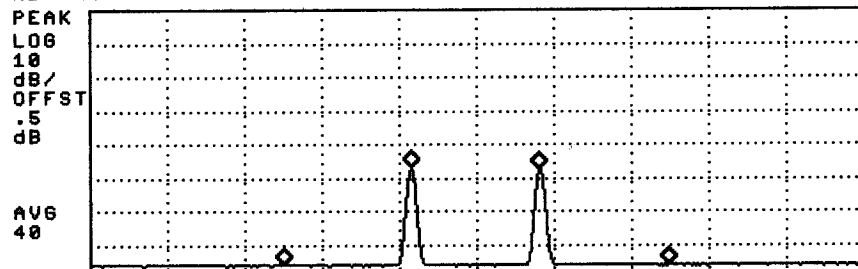
Marker	Trace	Type	Freq / Time	Amplitude
1:	(A)	Freq	1907.500 MHz	-15.75 dBm
2:	(A)	Freq	1908.490 MHz	12.81 dBm
3:	(A)	Freq	1909.480 MHz	12.59 dBm
4:	(A)	Freq	1910.485 MHz	-14.97 dBm

CENTER 1.909000 GHz SPAN 6.000 MHz
#RES BW 30 kHz VBW 30 kHz #SWP 33.3 msec

05:08:35 FEB 12, 2004

MKR 1.907500 GHz
-61.19 dBm

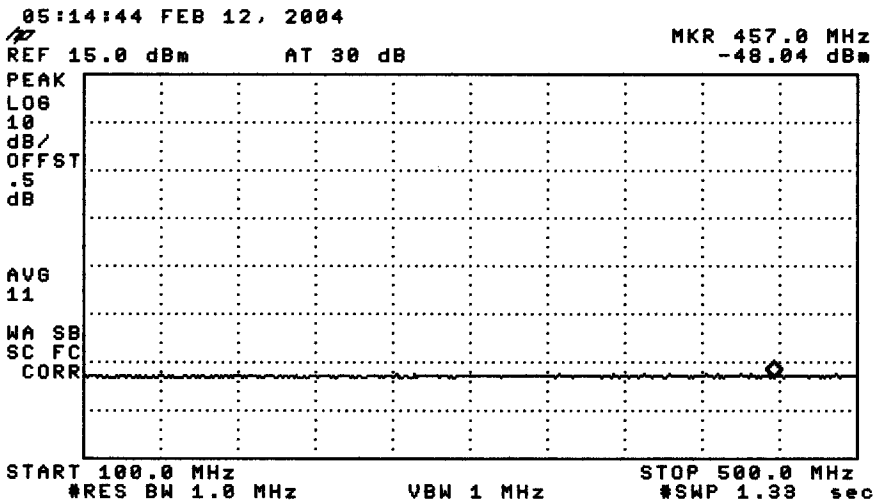
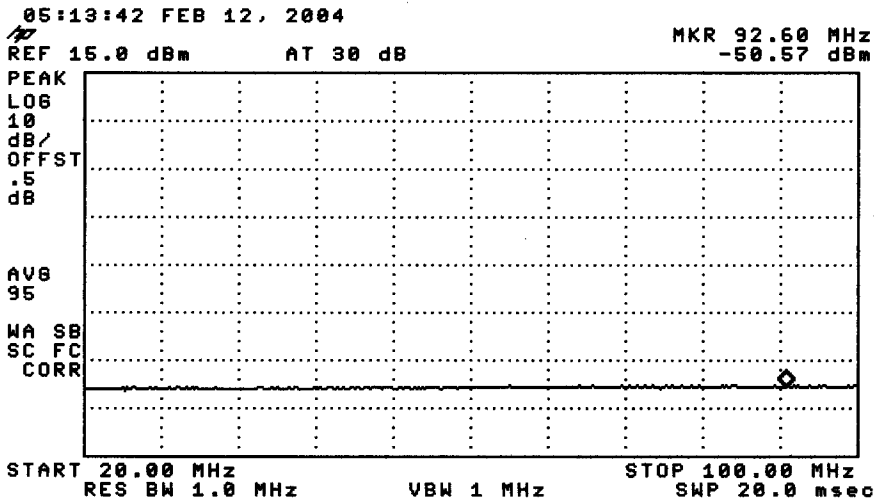
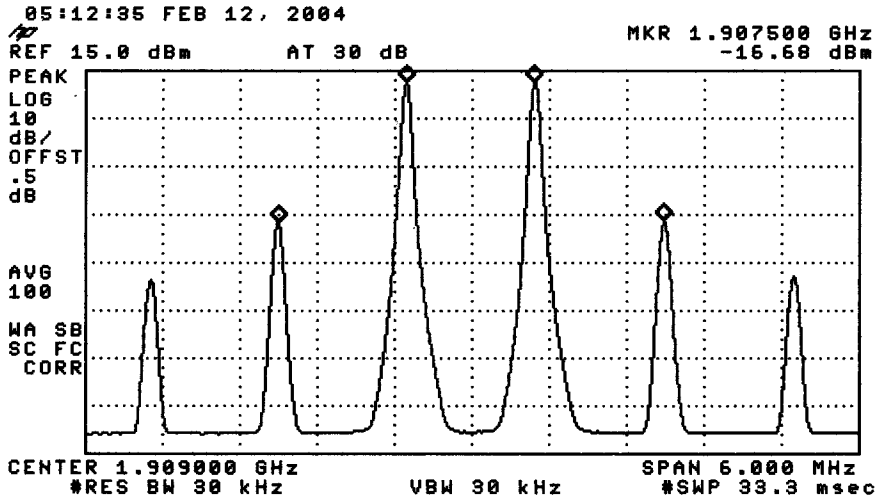
REF 15.0 dBm AT 30 dB



Marker	Trace	Type	Freq / Time	Amplitude
1:	(A)	Freq	1907.500 MHz	-61.19 dBm
2:	(A)	Freq	1908.490 MHz	-32.05 dBm
3:	(A)	Freq	1909.480 MHz	-32.52 dBm
4:	(A)	Freq	1910.485 MHz	-61.21 dBm

CENTER 1.909000 GHz SPAN 6.000 MHz
#RES BW 30 kHz VBW 30 kHz #SWP 33.3 msec

NADC

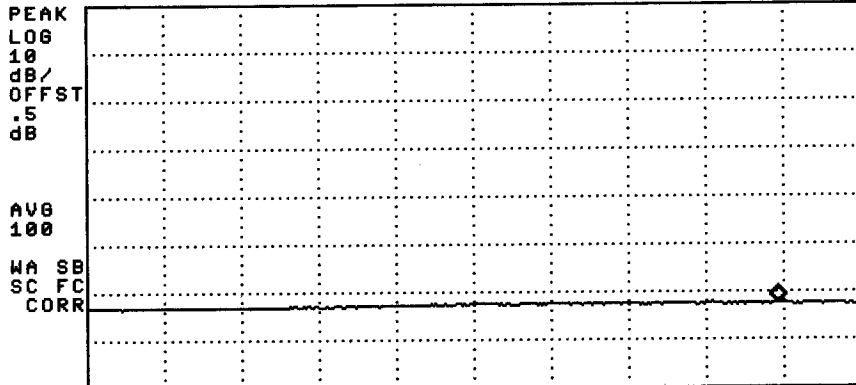


NADC

05:16:46 FEB 12, 2004

MKR 946.2 MHz
-47.54 dBm

REF 15.0 dBm AT 30 dB

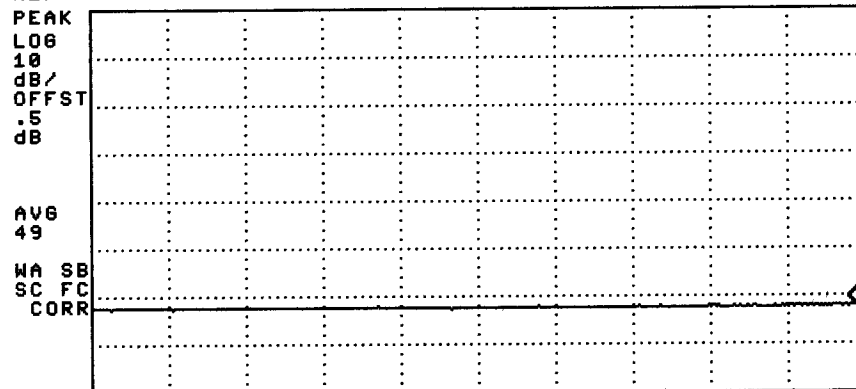


START 500.0 MHz STOP 1.0000 GHz
#RES BW 1.0 MHz VBW 1 MHz #SWP 500 msec

05:17:57 FEB 12, 2004

MKR 1.4938 GHz
-47.16 dBm

REF 15.0 dBm AT 30 dB

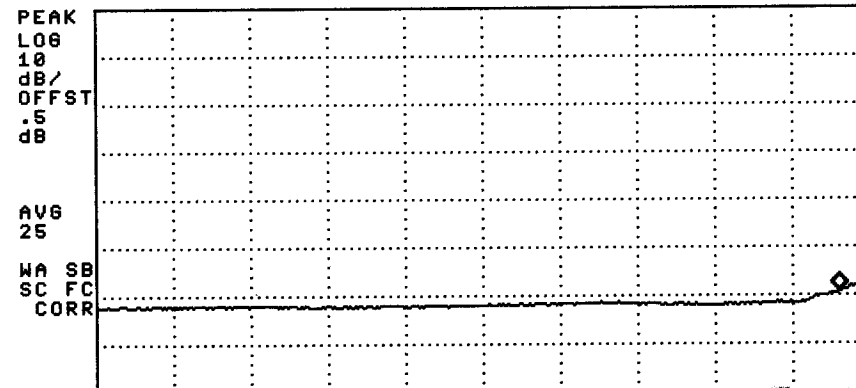


START 1.0000 GHz STOP 1.5000 GHz
#RES BW 1.0 MHz VBW 1 MHz #SWP 500 msec

05:19:13 FEB 12, 2004

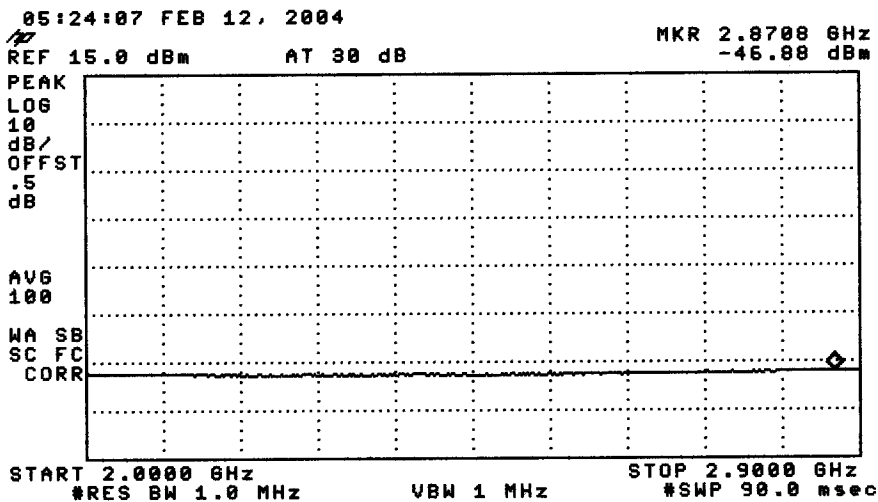
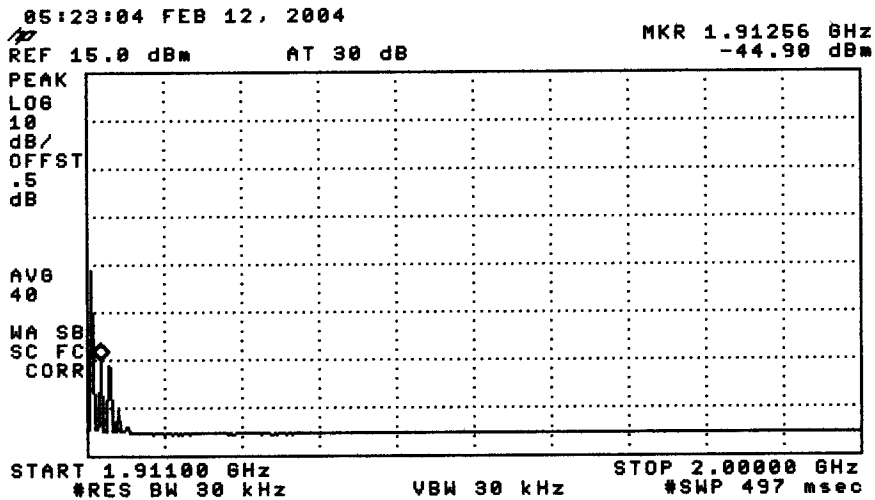
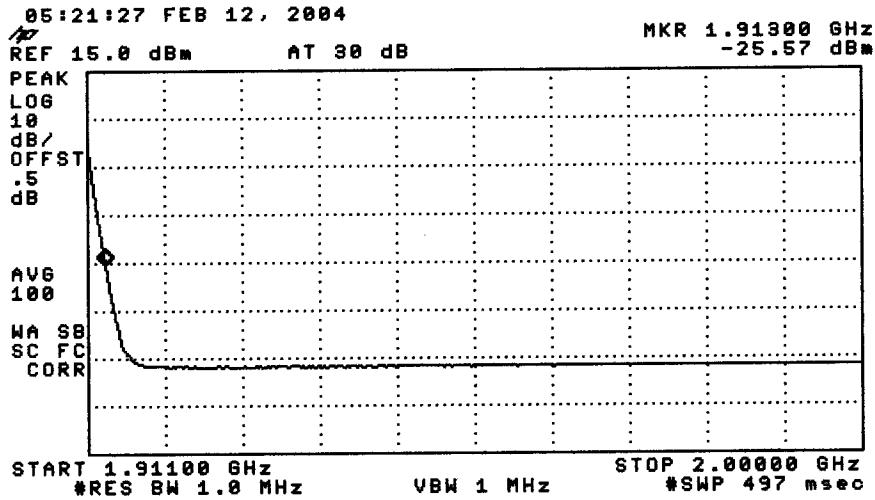
MKR 1.8736 GHz
-44.29 dBm

REF 15.0 dBm AT 30 dB



START 1.0000 GHz STOP 1.9100 GHz
#RES BW 1.0 MHz VBW 1 MHz #SWP 850 msec

NADC



NADC

