

NADC

09:40:13 FEB 12, 2004

MKR 1.987485 GHz
-63.32 dBm

REF 2.0 dBm

AT 20 dB



Marker	Trace	Type	Freq / Time	Amplitude
1:	(A)	Freq	1987.485 MHz	-63.33 dBm
2:	(A)	Freq	1988.490 MHz	0.63 dBm
3:	(A)	Freq	1989.480 MHz	0.63 dBm
4:	(A)	Freq	1990.500 MHz	-64.11 dBm

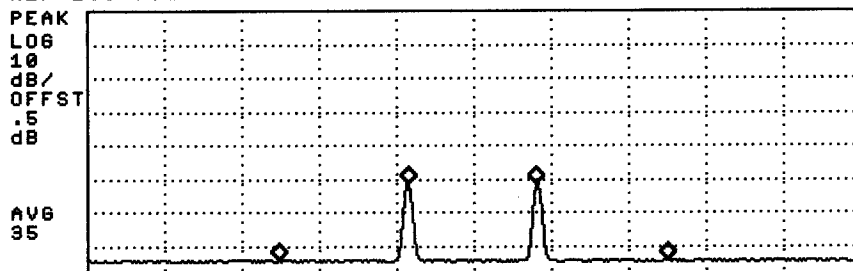
CENTER 1.989000 GHz SPAN 6.000 MHz
#RES BW 30 kHz VBW 30 kHz #SWP 33.3 msec

09:41:45 FEB 12, 2004

MKR 1.987485 GHz
-72.51 dBm

REF 2.0 dBm

AT 20 dB



Marker	Trace	Type	Freq / Time	Amplitude
1:	(A)	Freq	1987.485 MHz	-72.51 dBm
2:	(A)	Freq	1988.490 MHz	-49.33 dBm
3:	(A)	Freq	1989.480 MHz	-49.66 dBm
4:	(A)	Freq	1990.500 MHz	-72.40 dBm

CENTER 1.989000 GHz SPAN 6.000 MHz
#RES BW 30 kHz VBW 30 kHz #SWP 33.3 msec

NADC

09:45:06 FEB 12, 2004

MKR 1.987485 GHz
-62.91 dBm

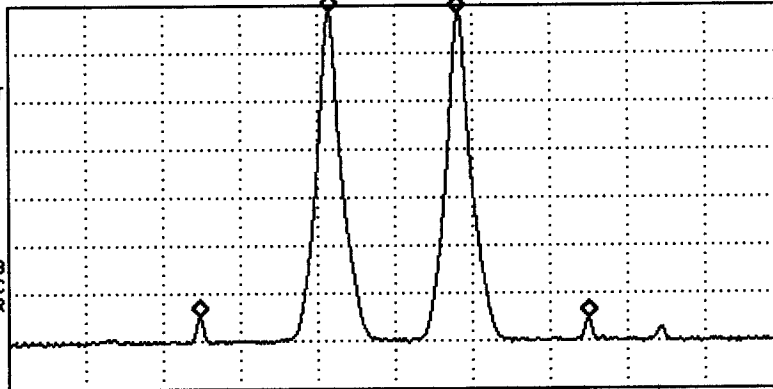
REF 2.0 dBm

AT 20 dB

PEAK
LOG
10
dB/
OFFST
.5
dB

AVG
100

WA SB
SC FC
CORR



CENTER 1.989000 GHz
#RES BW 30 kHz

VBW 30 kHz

SPAN 6.000 MHz
#SWP 33.3 msec

09:46:16 FEB 12, 2004

MKR 92.60 MHz
-61.52 dBm

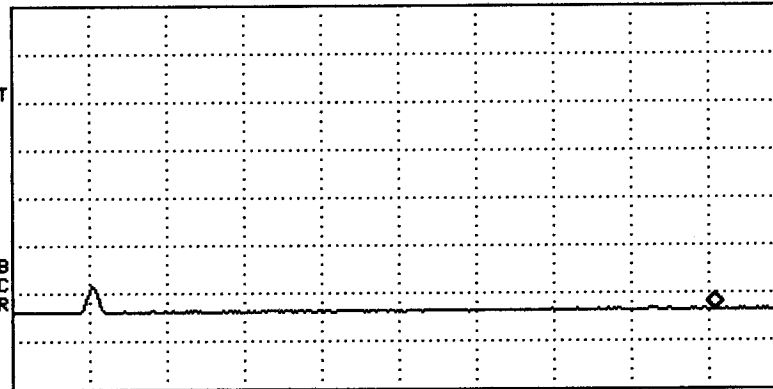
REF 2.0 dBm

AT 20 dB

PEAK
LOG
10
dB/
OFFST
.5
dB

AVG
100

WA SB
SC FC
CORR



START 20.00 MHz
#RES BW 1.0 MHz

VBW 1 MHz

STOP 100.00 MHz
SWP 20.0 msec

09:47:27 FEB 12, 2004

MKR 457.0 MHz
-58.87 dBm

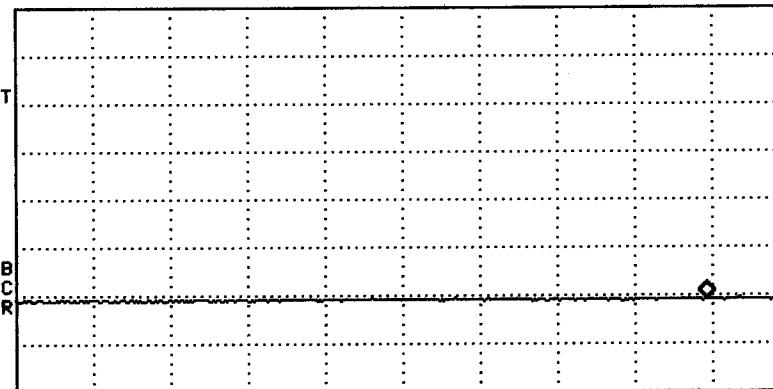
REF 2.0 dBm

AT 20 dB

PEAK
LOG
10
dB/
OFFST
.5
dB

AVG
20

WA SB
SC FC
CORR

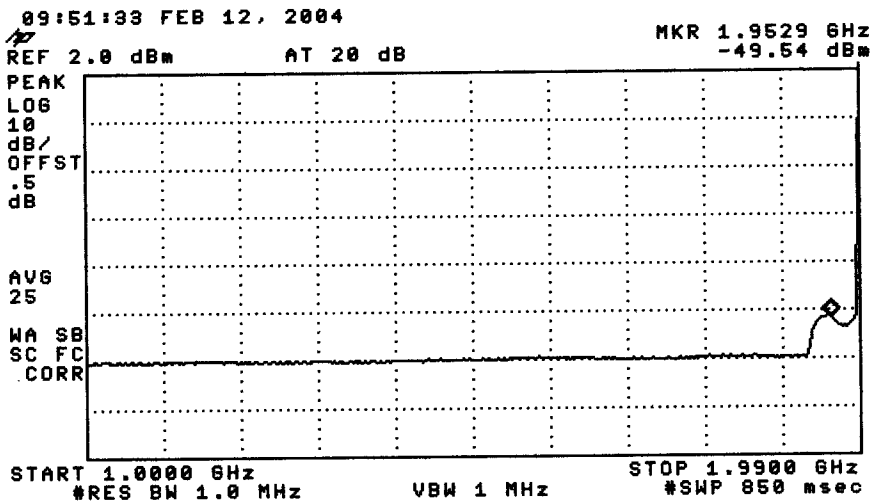
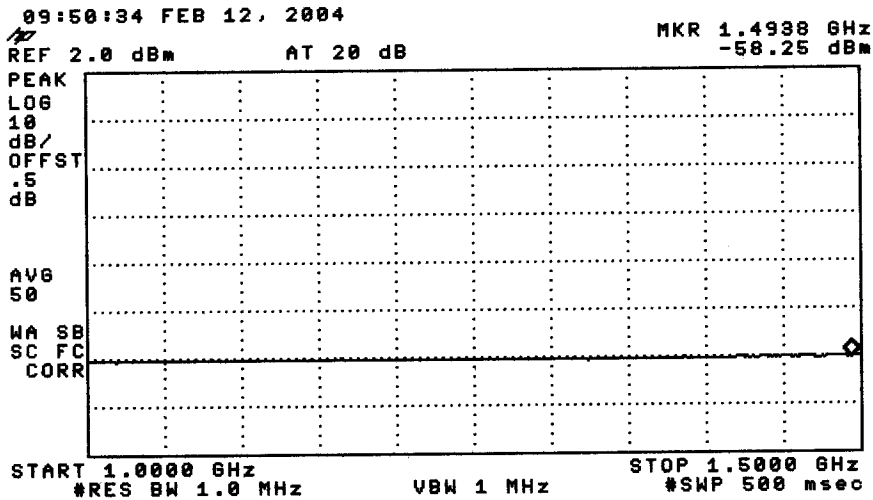
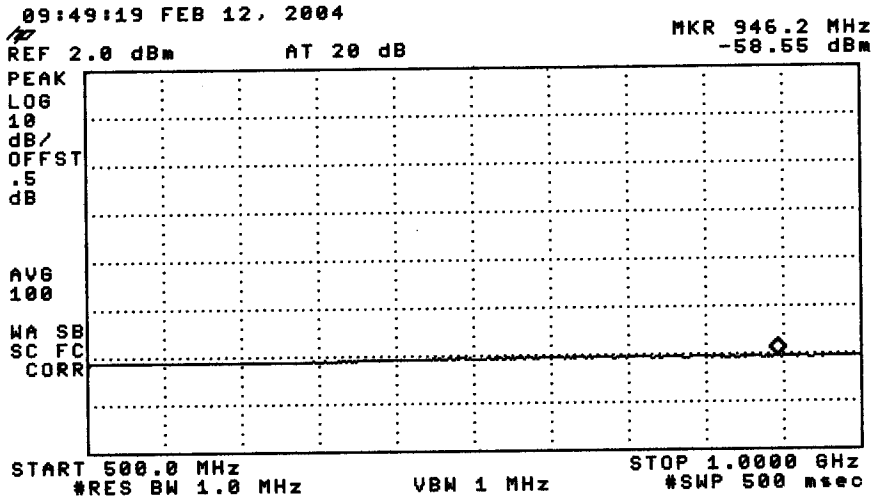


START 100.0 MHz
#RES BW 1.0 MHz

VBW 1 MHz

STOP 500.0 MHz
#SWP 1.33 sec

NADC

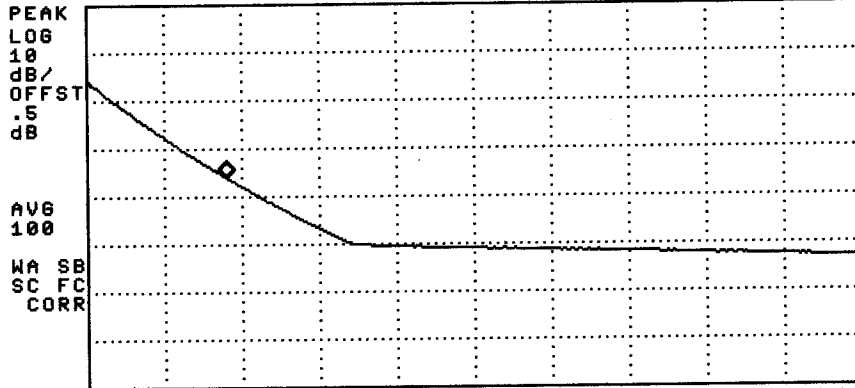


NADC

09:53:46 FEB 12, 2004

MKR 1.992620 GHz
-34.00 dBm

REF 2.0 dBm AT 20 dB

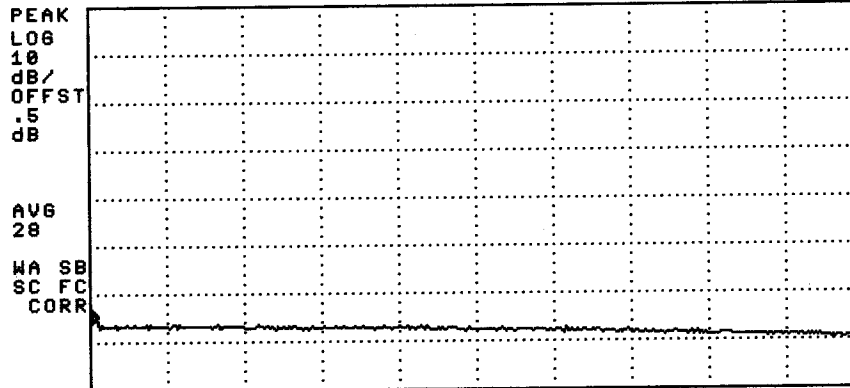


START 1.991000 GHz STOP 2.000000 GHz
#RES BW 1.0 MHz VBW 1 MHz #SWP 497 msec

09:55:03 FEB 12, 2004

MKR 1.991000 GHz
-64.31 dBm

REF 2.0 dBm AT 20 dB

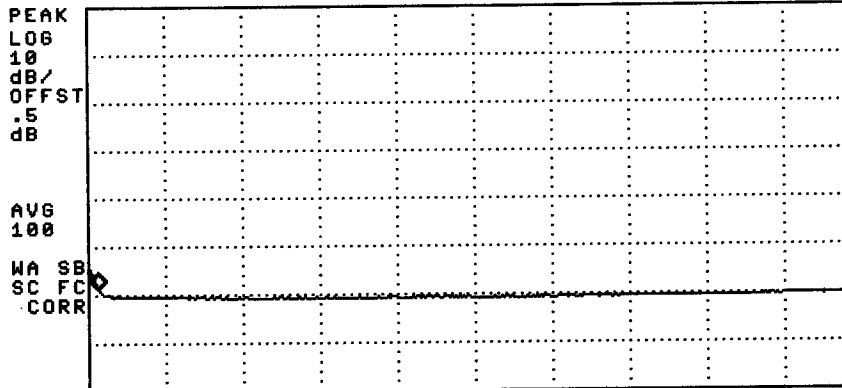


START 1.991000 GHz STOP 2.000000 GHz
#RES BW 30 kHz VBW 30 kHz #SWP 497 msec

09:56:07 FEB 12, 2004

MKR 2.0113 GHz
-56.86 dBm

REF 2.0 dBm AT 20 dB



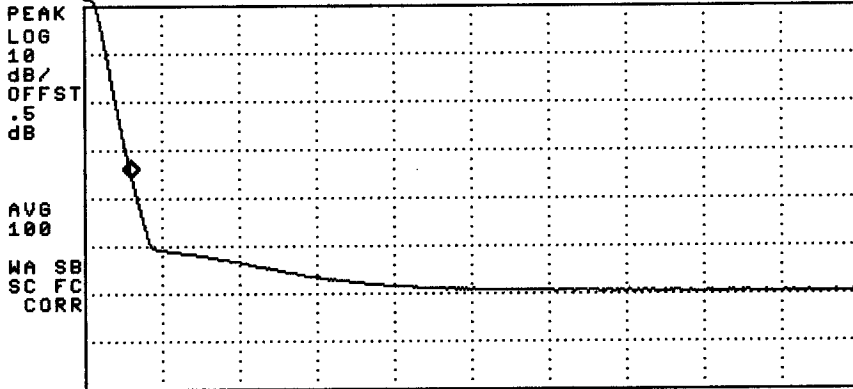
START 2.0000 GHz STOP 2.9000 GHz
#RES BW 1.0 MHz VBW 1 MHz #SWP 98.0 msec

NADC

09:58:47 FEB 12, 2004

MKR 1.99266 GHz
-33.39 dBm

REF 2.0 dBm AT 20 dB

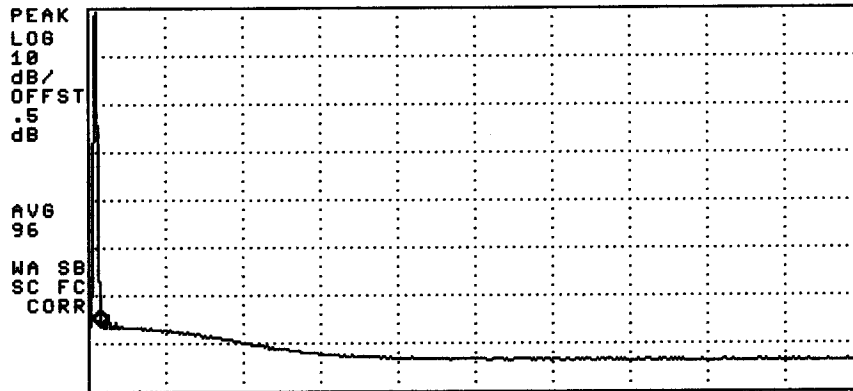


START 1.98900 GHz STOP 2.05000 GHz
#RES BW 1.0 MHz VBW 1 MHz #SWP 497 msec

10:00:23 FEB 12, 2004

MKR 1.98992 GHz
-64.40 dBm

REF 2.0 dBm AT 20 dB

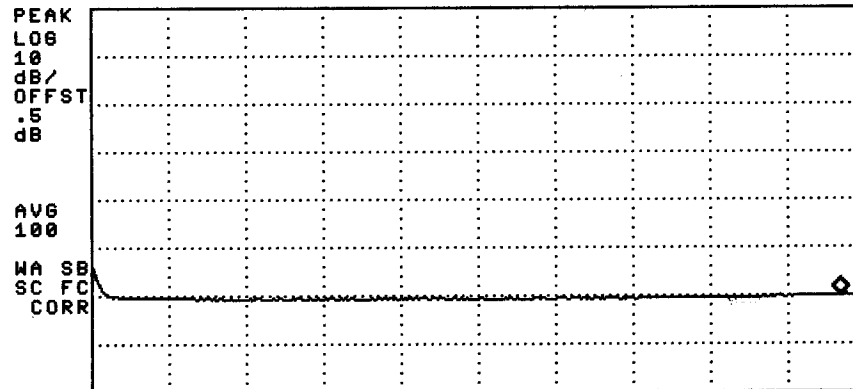


START 1.98900 GHz STOP 2.05000 GHz
#RES BW 30 kHz VBW 30 kHz #SWP 497 msec

10:01:29 FEB 12, 2004

MKR 2.8708 GHz
-57.97 dBm

REF 2.0 dBm AT 20 dB



START 2.00000 GHz STOP 2.90000 GHz
#RES BW 1.0 MHz VBW 1 MHz #SWP 90.0 msec

NADC

