

NADC

10:56:08 FEB 25, 2004

MRK 1.932500 GHz
-63.25 dBm

REF 2.0 dBm

AT 20 dB

PEAK
LOG
10
dB/
OFFST
.5
dB

AVG
100



Marker	Trace	Type	Freq / Time	Amplitude
1:	(A)	Freq	1929.500 MHz	-63.18 dBm
2:	(A)	Freq	1930.490 MHz	0.54 dBm
3:	(A)	Freq	1931.495 MHz	0.12 dBm
4:	(A)	Freq	1932.500 MHz	-63.26 dBm

CENTER 1.931000 GHz
#RES BW 30 kHz

VBW 30 kHz

SPAN 6.000 MHz
#SWP 33.3 msec

10:57:38 FEB 25, 2004

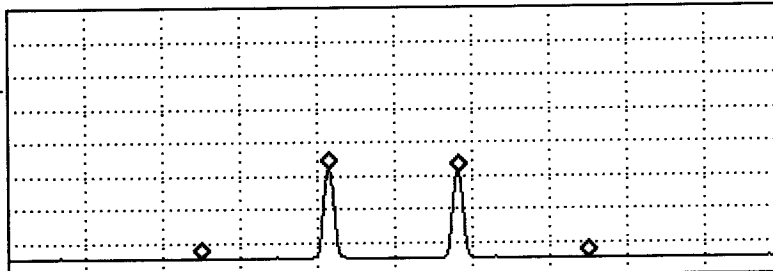
MRK 1.929500 GHz
-72.74 dBm

REF 2.0 dBm

AT 20 dB

PEAK
LOG
10
dB/
OFFST
.5
dB

AVG
36



Marker	Trace	Type	Freq / Time	Amplitude
1:	(A)	Freq	1929.500 MHz	-72.74 dBm
2:	(A)	Freq	1930.490 MHz	-46.16 dBm
3:	(A)	Freq	1931.495 MHz	-47.13 dBm
4:	(A)	Freq	1932.500 MHz	-72.71 dBm

CENTER 1.931000 GHz
#RES BW 30 kHz

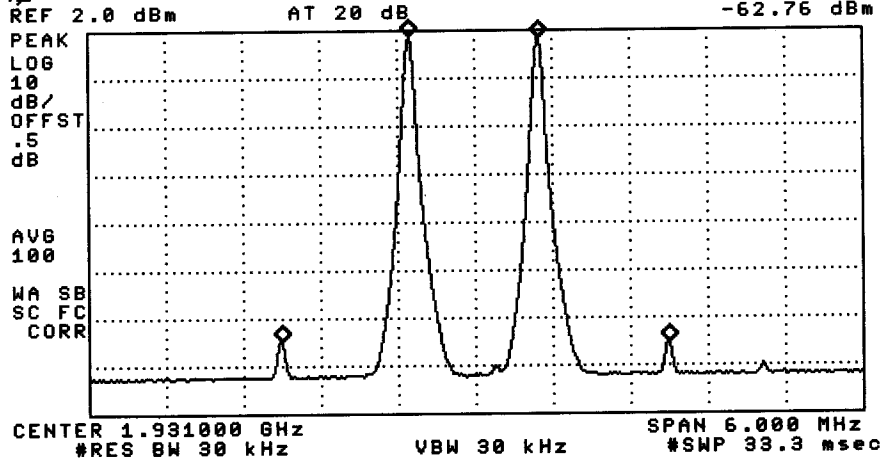
VBW 30 kHz

SPAN 6.000 MHz
#SWP 33.3 msec

NADC

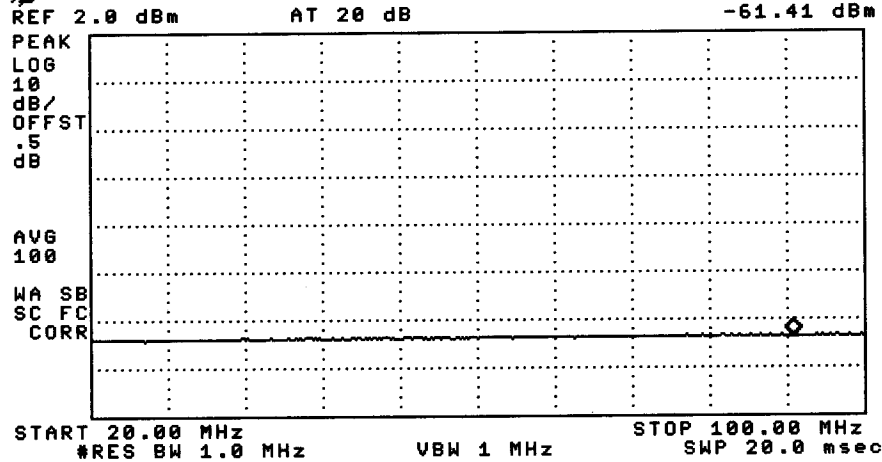
11:01:08 FEB 25, 2004

MKR 1.929500 GHz
-62.76 dBm



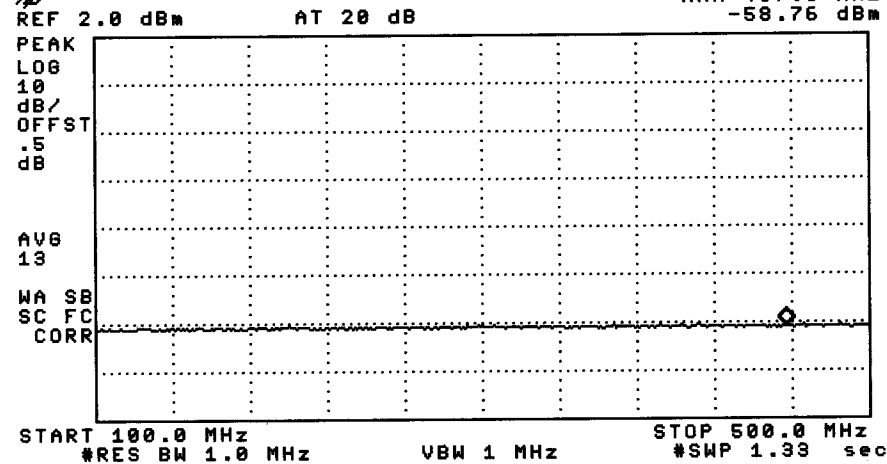
11:02:19 FEB 25, 2004

MKR 92.60 MHz
-61.41 dBm



11:03:17 FEB 25, 2004

MKR 457.0 MHz
-58.76 dBm

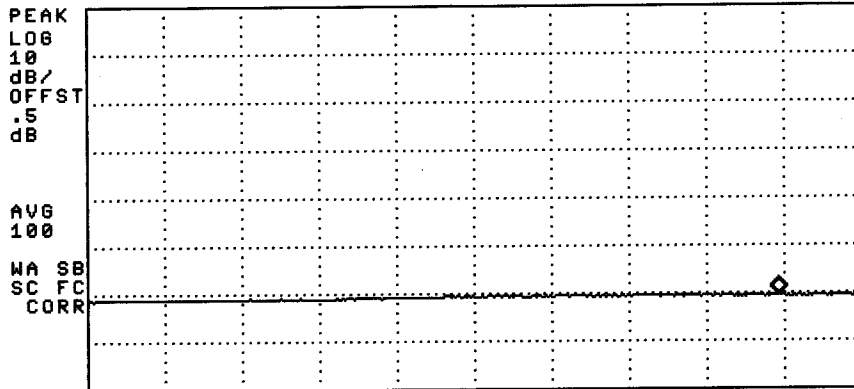


NADC

11:05:47 FEB 25, 2004

MKR 946.2 MHz
-58.59 dBm

REF 2.0 dBm AT 20 dB

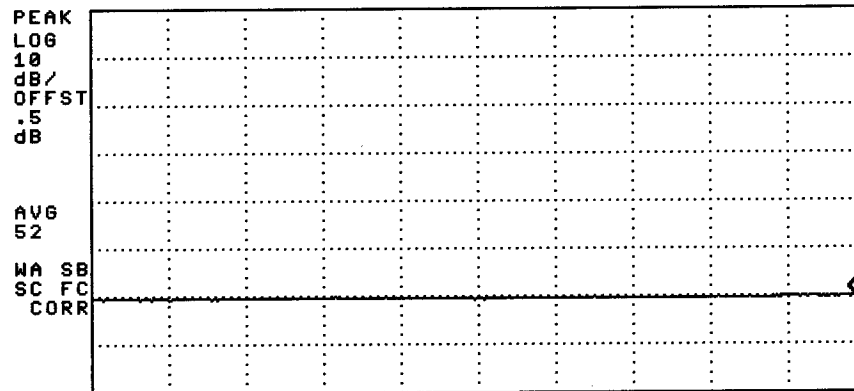


START 500.0 MHz STOP 1.0000 GHz
#RES BW 1.0 MHz VBW 1 MHz #SWP 500 msec

11:06:55 FEB 25, 2004

MKR 1.4938 GHz
-58.16 dBm

REF 2.0 dBm AT 20 dB

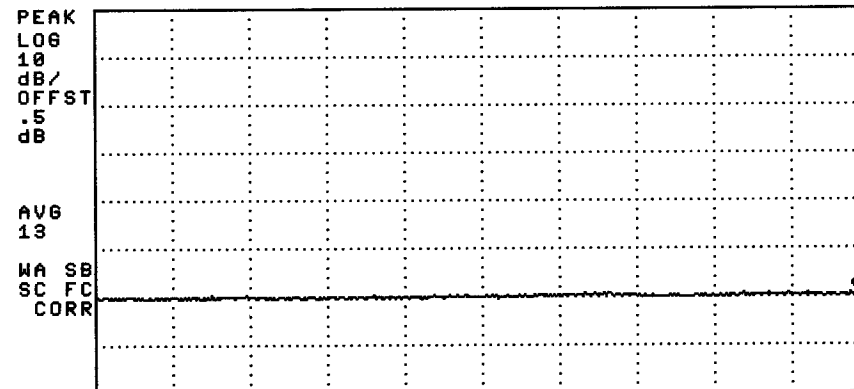


START 1.0000 GHz STOP 1.5000 GHz
#RES BW 1.0 MHz VBW 1 MHz #SWP 500 msec

11:08:01 FEB 25, 2004

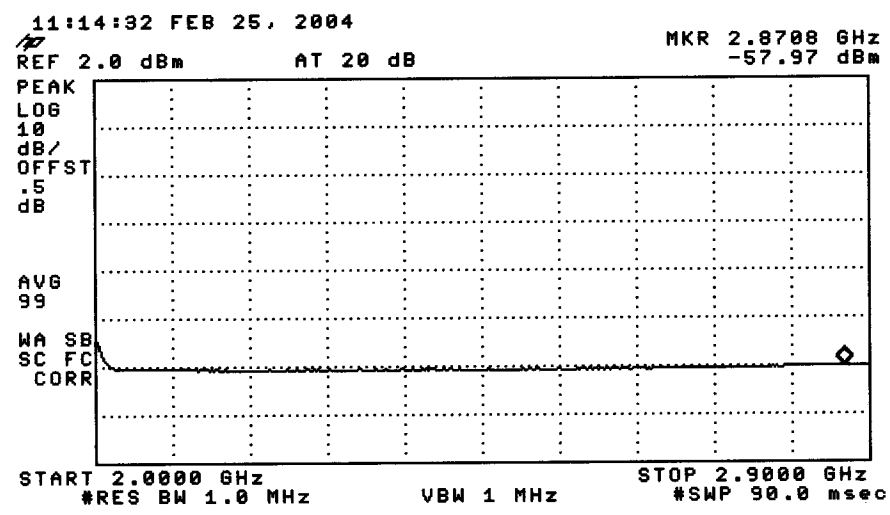
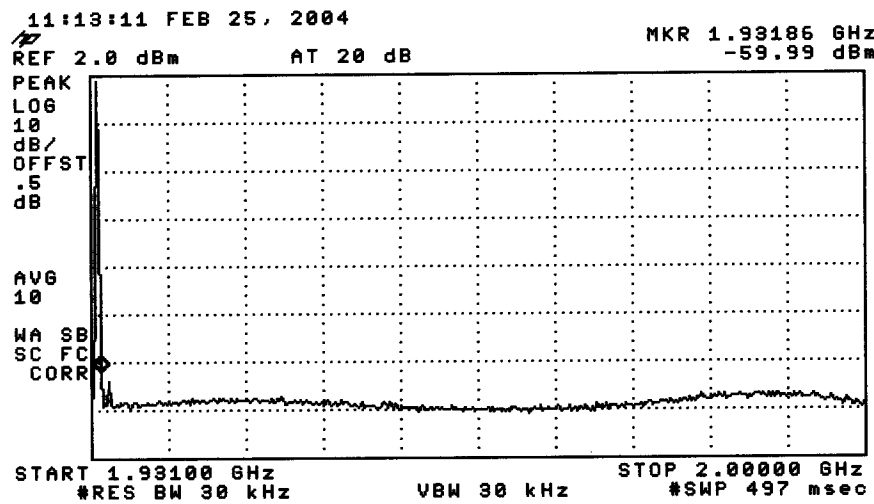
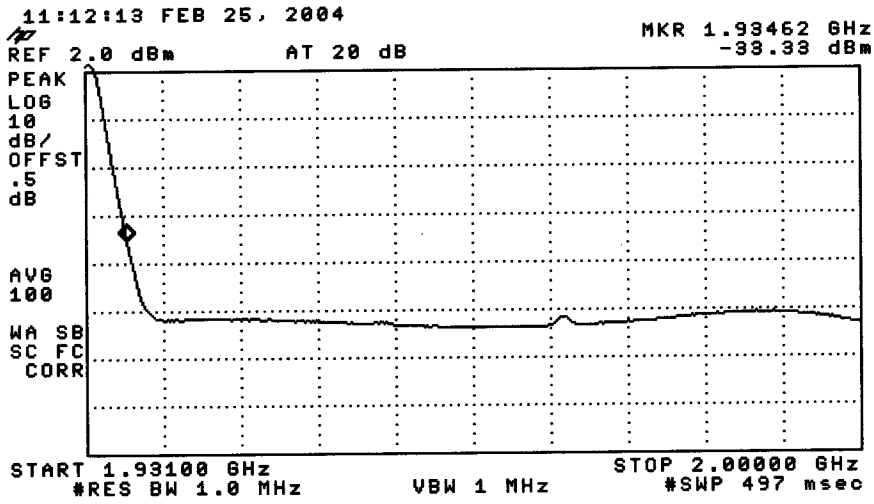
MKR 1.9233 GHz
-57.17 dBm

REF 2.0 dBm AT 20 dB



START 1.0000 GHz STOP 1.9350 GHz
#RES BW 1.0 MHz VBW 1 MHz #SWP 850 msec

NADC



NADC

