

## **Type Acceptance Test Report**

**Multimode PCS Repeater  
FCC Rule Parts: 2, 15 & 24**

**ACS Report Number: 03-0089-24TA**

Manufacturer: EMS Wireless  
Model: Link2Cell

FCC ID: DNY0B2L2C1900

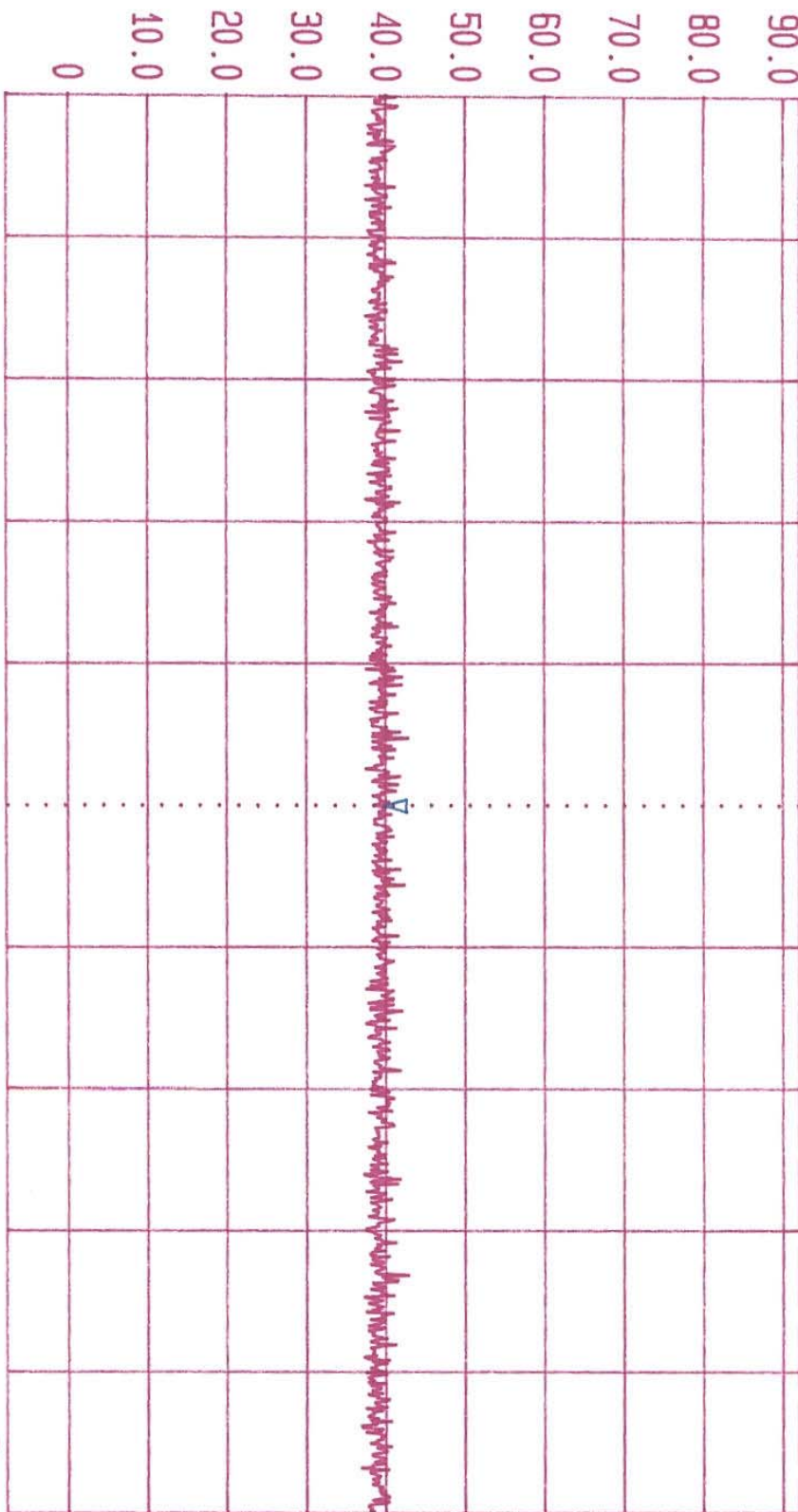
## **Appendix D**

## **Radiated Spurious Emission Plots**



Date 09.Mar.'03 Time 13:50:53  
Ref.Lvl 92.00 dBµV  
Marker 39.77 dBµV  
3.70001 GHz

Res.Bw 1 MHz [imp]  
TG.Lvl off  
CF.Str 1.850 GHz  
Vid.Bw 1 MHz  
RF.Att Unit  
5 dB [dBµV]



Start 3.695 GHz  
Span 10 MHz  
Center 3.7 GHz  
Sweep 20 ms  
Stop 3.705 GHz  
03-0089 CDMA MODE UPLINK LOW CHANNEL

PA  
10



Date 09.Mar.'03 Time 13:54:57  
Ref.Lvl 92.00 dBµV  
Marker 5.55001 GHz

Res.Bw 1 MHz [imp]  
T6.Lvl Off  
CF.Strp 1.850 GHz

Vid.Bw 1 MHz  
RF.Att Unit  
5 dB [dBµV]



PA 10

Start 5.545 GHz  
Span 10 MHz  
Center 5.55 GHz  
Sweep 20 ms  
Stop 5.555 GHz  
03-0089 CDMA MODE UPLINK LOW CHANNEL



Date 09. Mar. '03 Time 14:02:40  
 Ref. Lvl 92.00 dBµV Marker 40.91 dBµV  
 3.70001 GHz

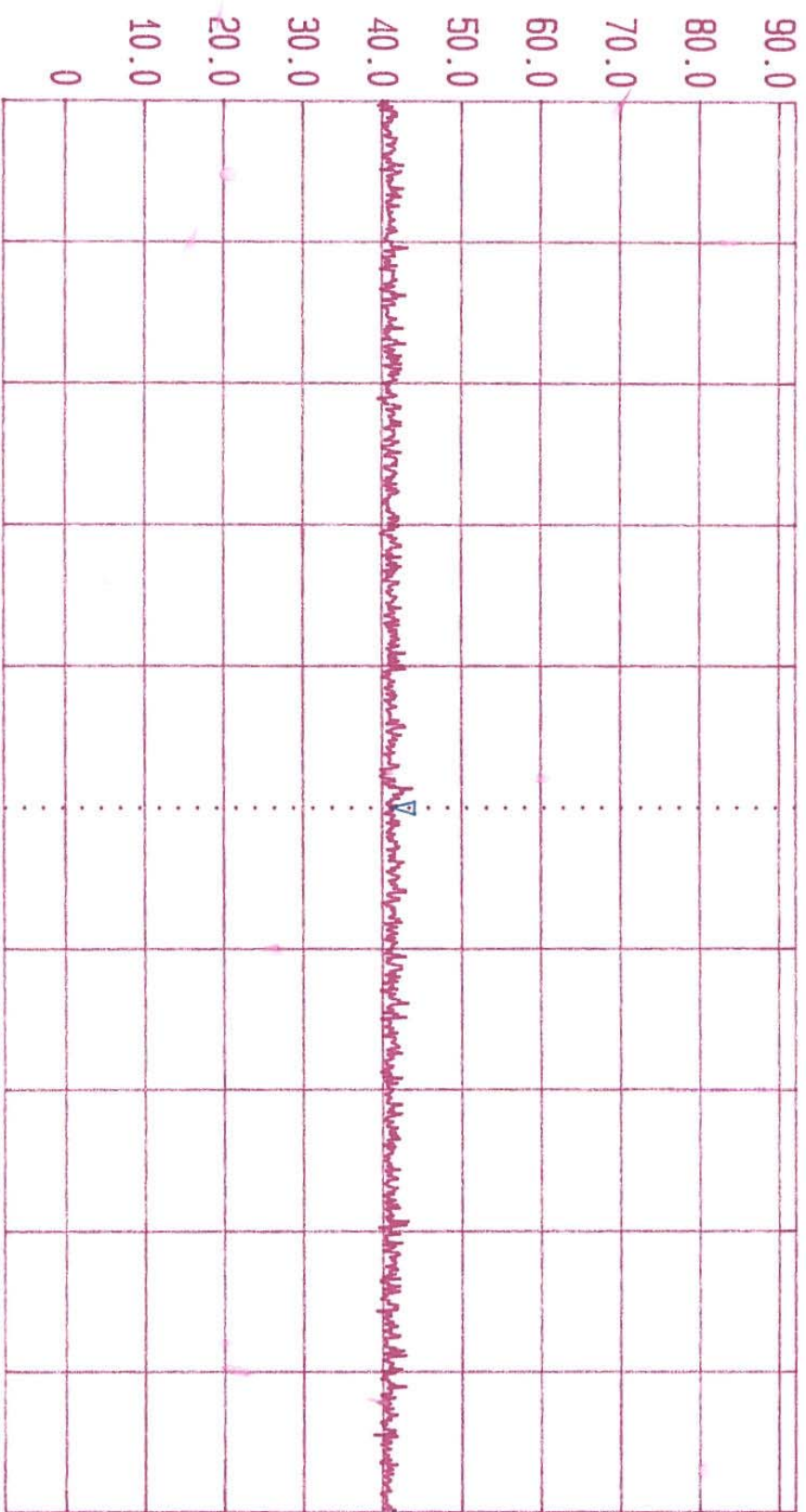
100.00  
 TG. Lvl 16. Lvl  
 CF. Stp

1.850 GHz  
 Off

RF. Att Unit

5 dB  
 [dBµV]

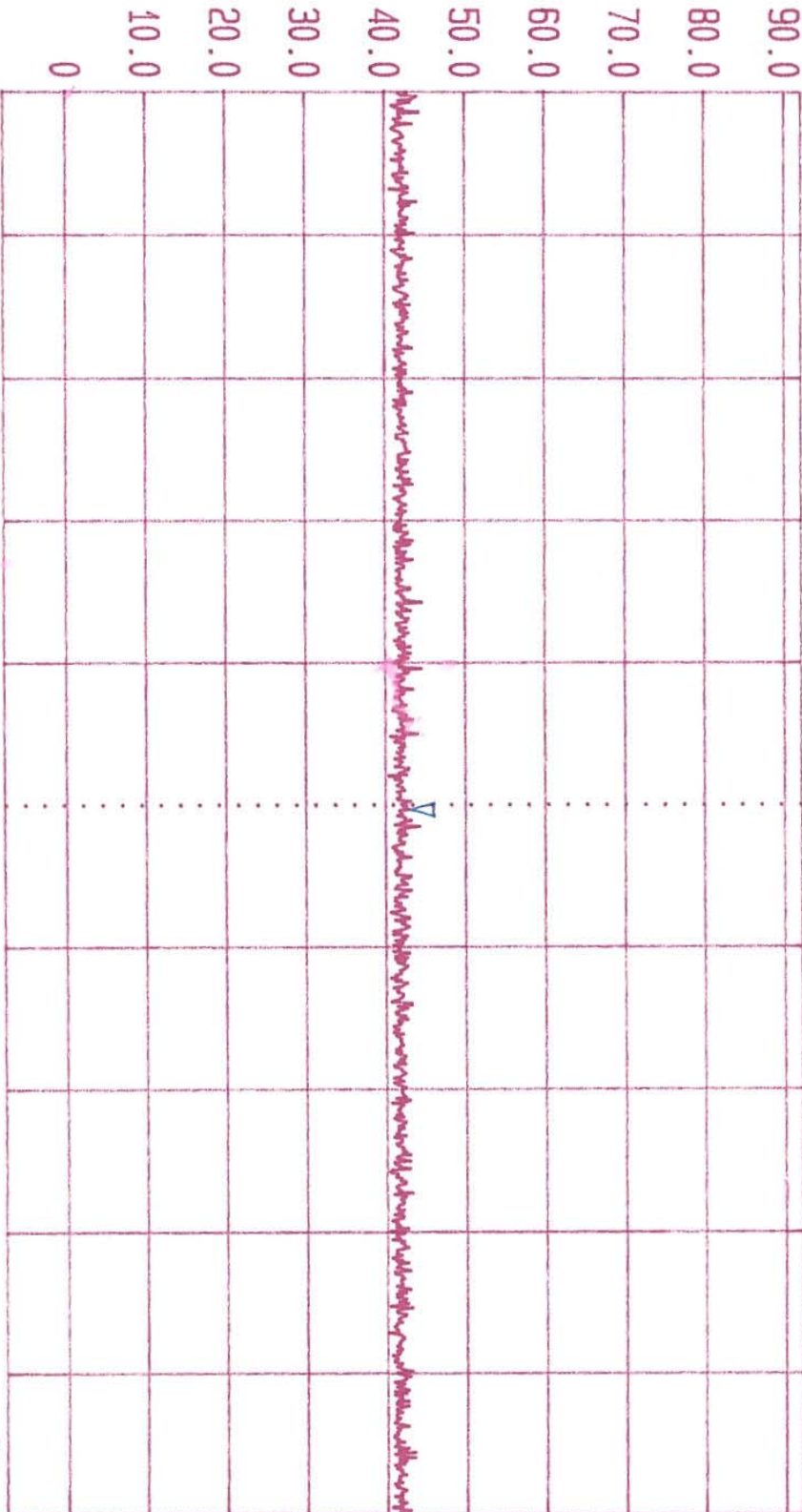
00-0089 CDMA MODE UPLINK MID CHANNEL  
 Start 3.695 GHz Span 10 MHz  
 Center 3.7 GHz Sweep 20 ms  
 Stop 3.705 GHz



PA
10



Date 09.Mar.'03 Time 14:06:15  
 Ref.Lvl 92.00 dBµV  
 Marker 43.05 dBµV  
 Res.Bw 1 MHz [imp]  
 TG.Lvl 1.850 GHz  
 CF.Str off  
 Vid.Bw 1 MHz  
 RF.Att 5 dB  
 Unit [dBµV]

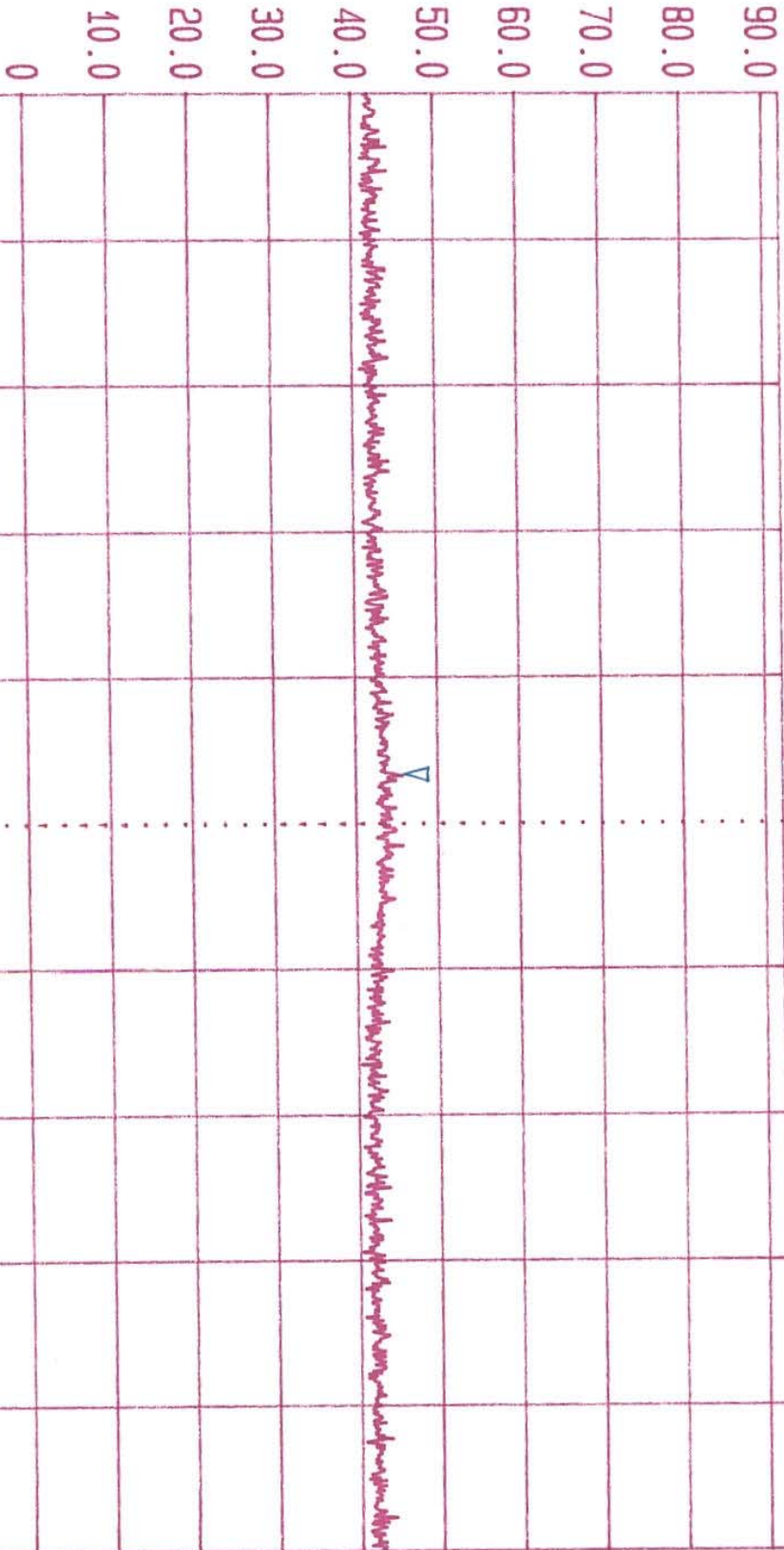


Start 5.545 GHz  
 Span 10 MHz  
 Center 5.55 GHz  
 Sweep 20 ms  
 Stop 5.555 GHz  
 00-0089 CDMA MODE UPLINK MID CHANNEL

PA 10



Date 09.Mar.'03 Time 14:11:31  
 Ref.Lvl 92.00 dBµV Marker 3.81967 GHz  
 TG.Lvl 45.66 dBµV CF.Stp 16.910 GHz  
 off 1.910 GHz  
 RF.Att Unit 5 dB [dBµV]



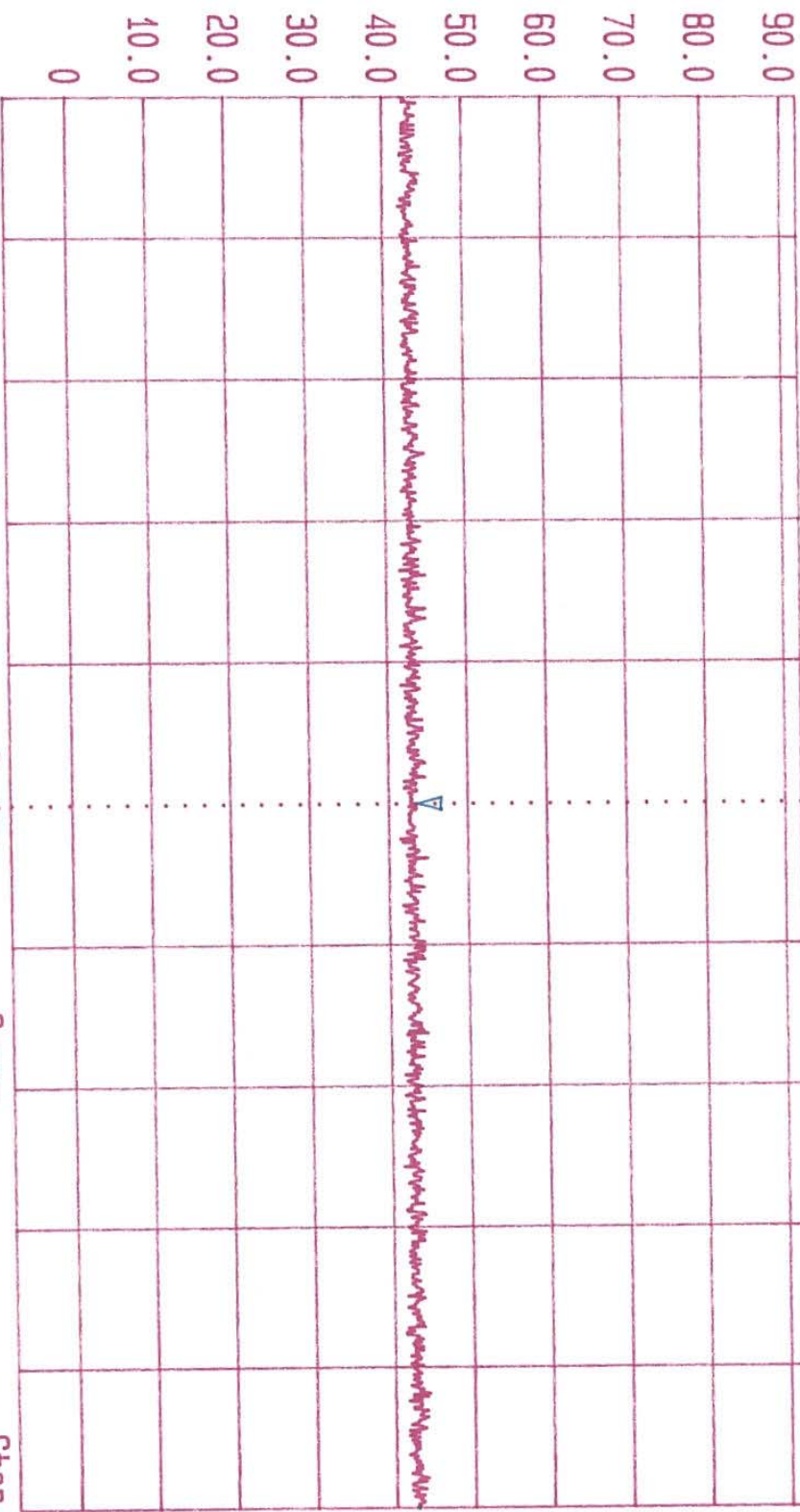
Start 3.815 GHz Span 10 MHz Center 3.82 GHz Sweep 20 ms Stop 3.825 GHz  
 03-0089 CDMA MODE UPLINK HIGH CHANNEL

PA  
10



Date 09.Mar.'03 Time 14:16:59  
Ref.Lvl 92.00 dBuV  
Marker 43.40 dBuV  
5.73001 GHz

Res.Bw 1 MHz [imp]  
TG.Lvl Off  
CF.Stp 1.910 GHz  
Vid.Bw 1 MHz  
RF.Att Unit  
5 dB [dBuV]



Start 5.725 GHz  
Span 10 MHz  
Center 5.73 GHz  
Sweep 20 ms  
Stop 5.735 GHz  
03-0089 CDMA MODE UPLINK HIGH CHANNEL

PA  
10



Date 09.Mar.'03 Time 11:25:29  
Ref.Lvl 87.00 dBµV  
Marker 41.30 dBµV  
3.86005 GHz

Res.Bw 1 MHz [imp]  
TG.Lvl off  
CF.Stp 1.930 GHz

Vid.Bw 1 MHz  
RF.Att Unit  
5 dB [dBµV]



PA  
10

03-0089 CDMA MODE DOWNLINK LO CHANNEL

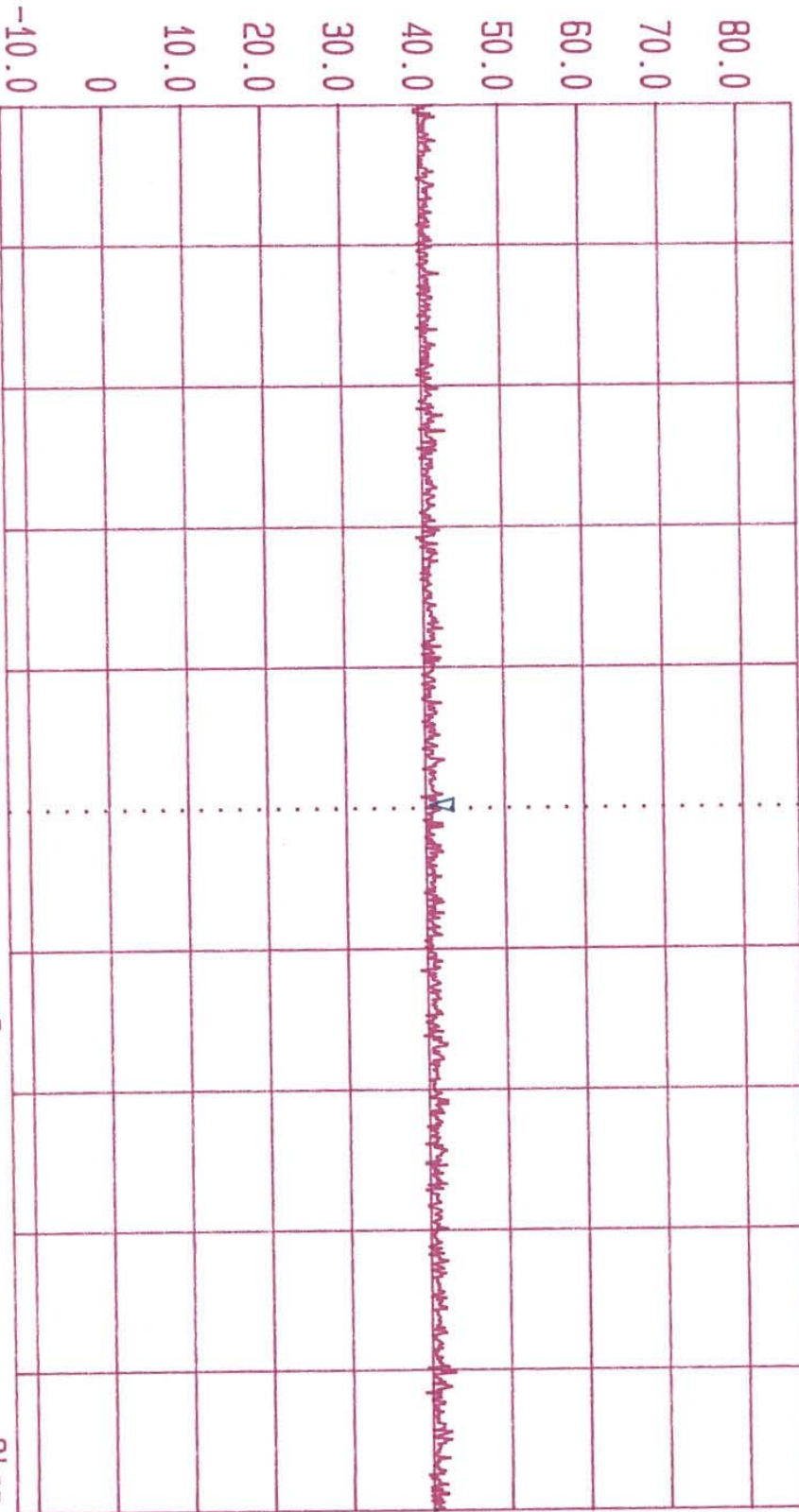




Date 09.Mar.'03 Time 09:38:30  
 Ref.Lvl 87.00 dBµV  
 Marker 40.48 dBµV  
 5.79000 GHz

Res.Bw 1 MHz [imp]  
 TG.Lvl off  
 CF.Stp 1.930 GHz

VID.BW 1 MHz  
 RF:Att Unit  
 5 dB [dBµV]



Start 5.78252 GHz Span 15 MHz Center 5.79002 GHz Sweep 20 ms Stop 5.79752 GHz  
 03-0089 CDMA MODE DOWNLINK LOW CHANNEL

PA  
10

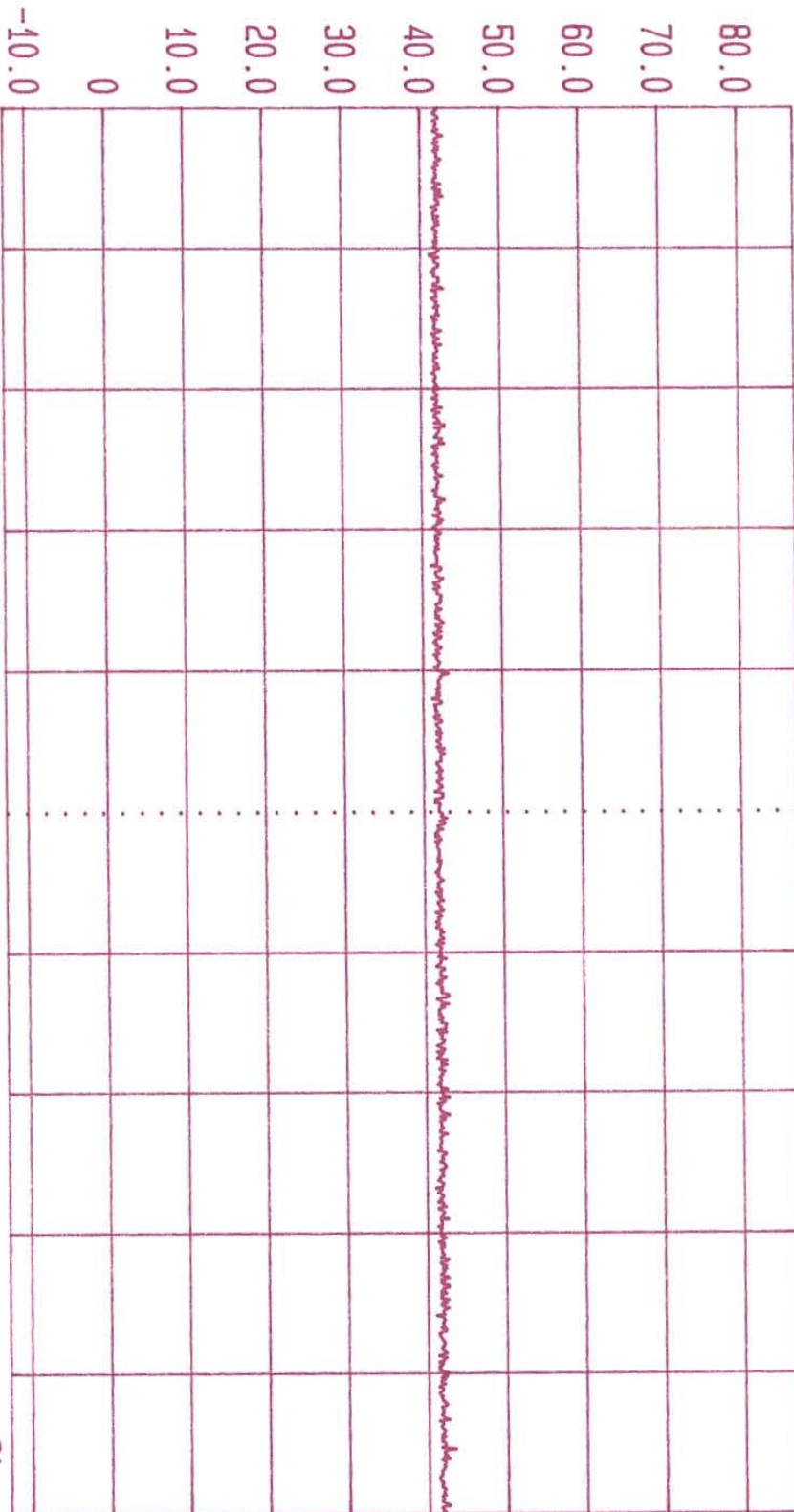


Date 09.Mar.'03 Time 09:49:04  
Ref.Lvl 87.00 dBµV

Res.Bw 1 MHz [imp]  
TG.Lvl Off  
CF.Stp 1.930 GHz

Vid.Bw 1 MHz  
RF.Att Unit

5 dB [dBµV]

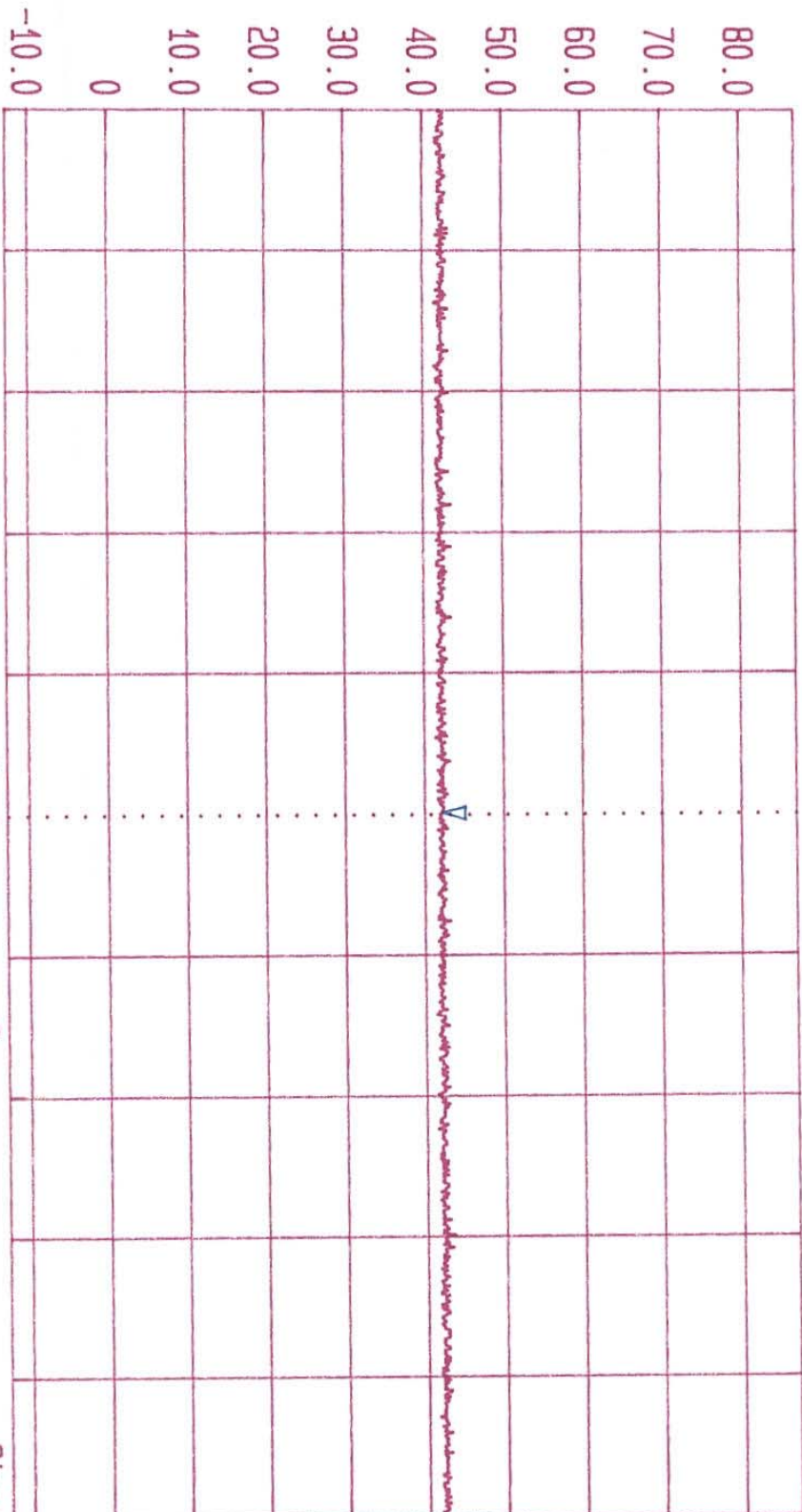


PA  
10

03-0089 CDMA MODE DOWNLINK LOW CHANNEL



Date 09.Mar.'03 Time 10:02:57  
 Ref.Lvl 87.00 dBµV Marker 42.16 dBµV  
 Res.Bw 1 MHz [imp] Vid.Bw 1 MHz  
 TG.Lvl CF.Stp 1.960 GHz off  
 RF.Att Unit [dBµV]



Start 5.8725 GHz Span 15 MHz Center 5.88 GHz Sweep 20 ms Stop 5.8875 GHz  
 03-0089 CDMA MODE DOWNLINK MID CHANNEL

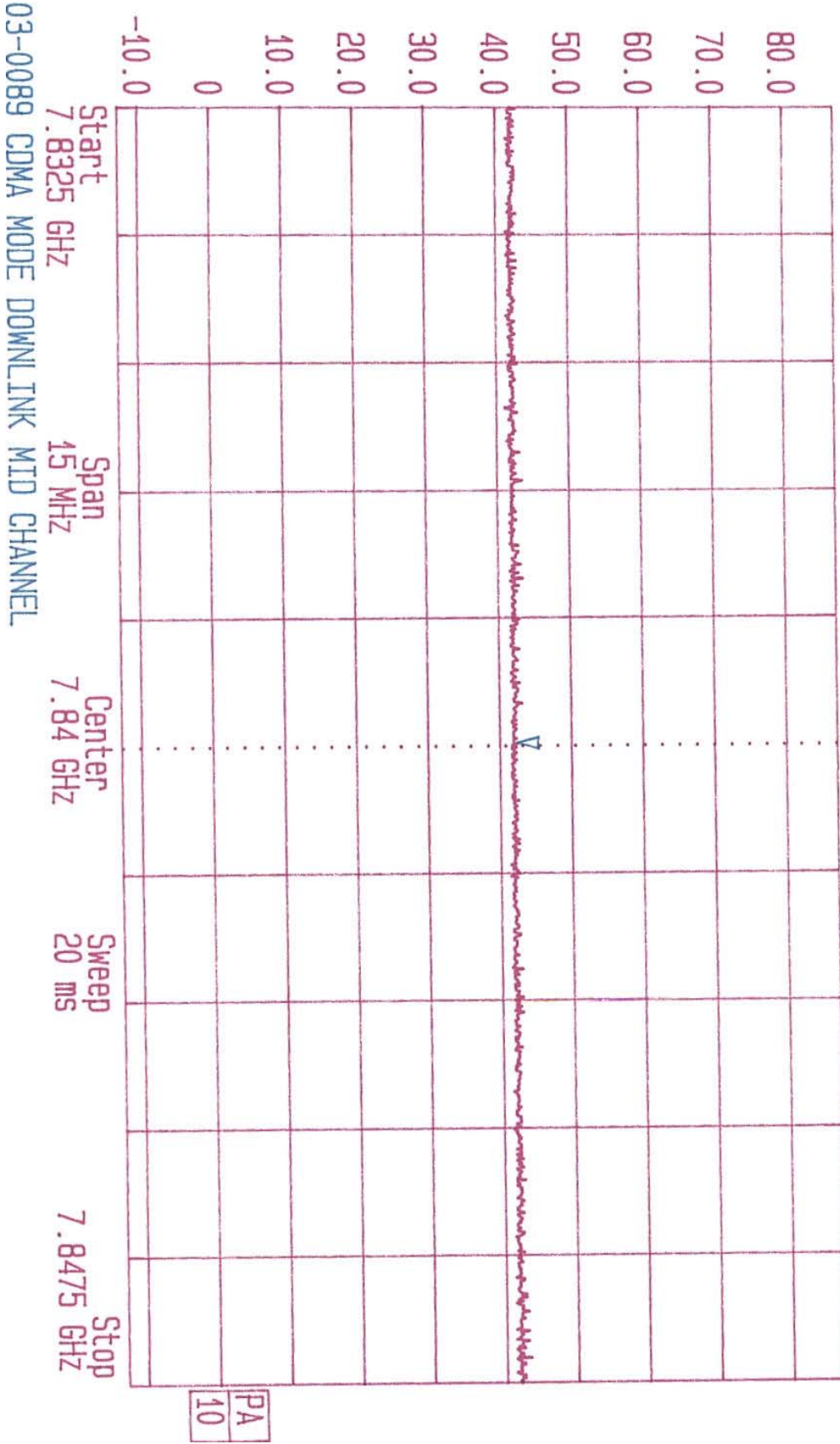
PA
10



Date 09. Mar. '03 Time 10:10:21  
 Ref. Lvl 87.00 dBµV  
 Marker 7.83998 GHz

TG. Lvl 42.34 dBµV  
 CF. Stp 7.84 GHz  
 off 1.960 GHz

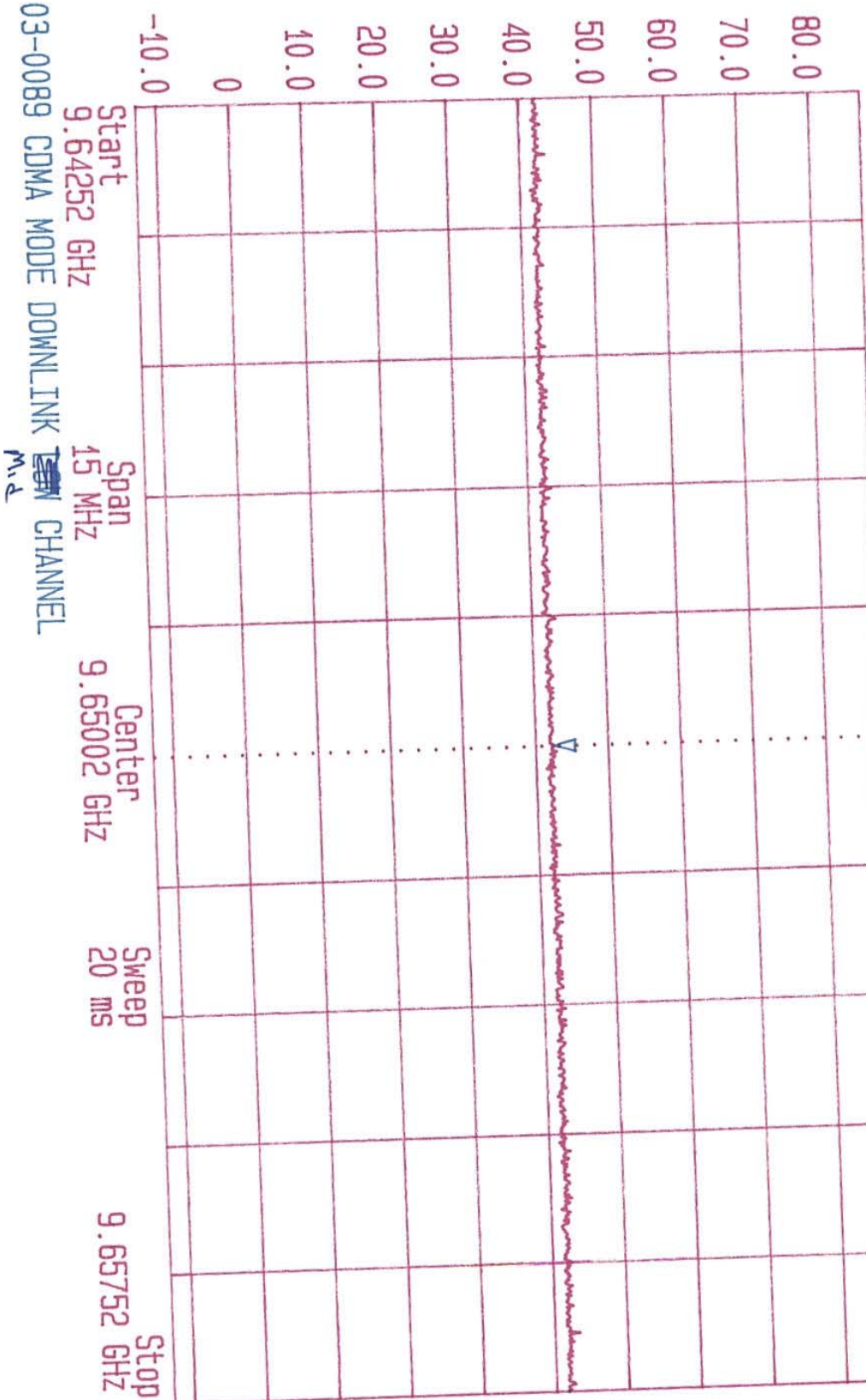
RF. Att Unit [dBµV]  
 5 dB





Date 09.Mar.'03 Time 09:54:03  
Ref.Lvl 87.00 dBµV  
Marker 42.31 dBµV  
9.65003 GHz

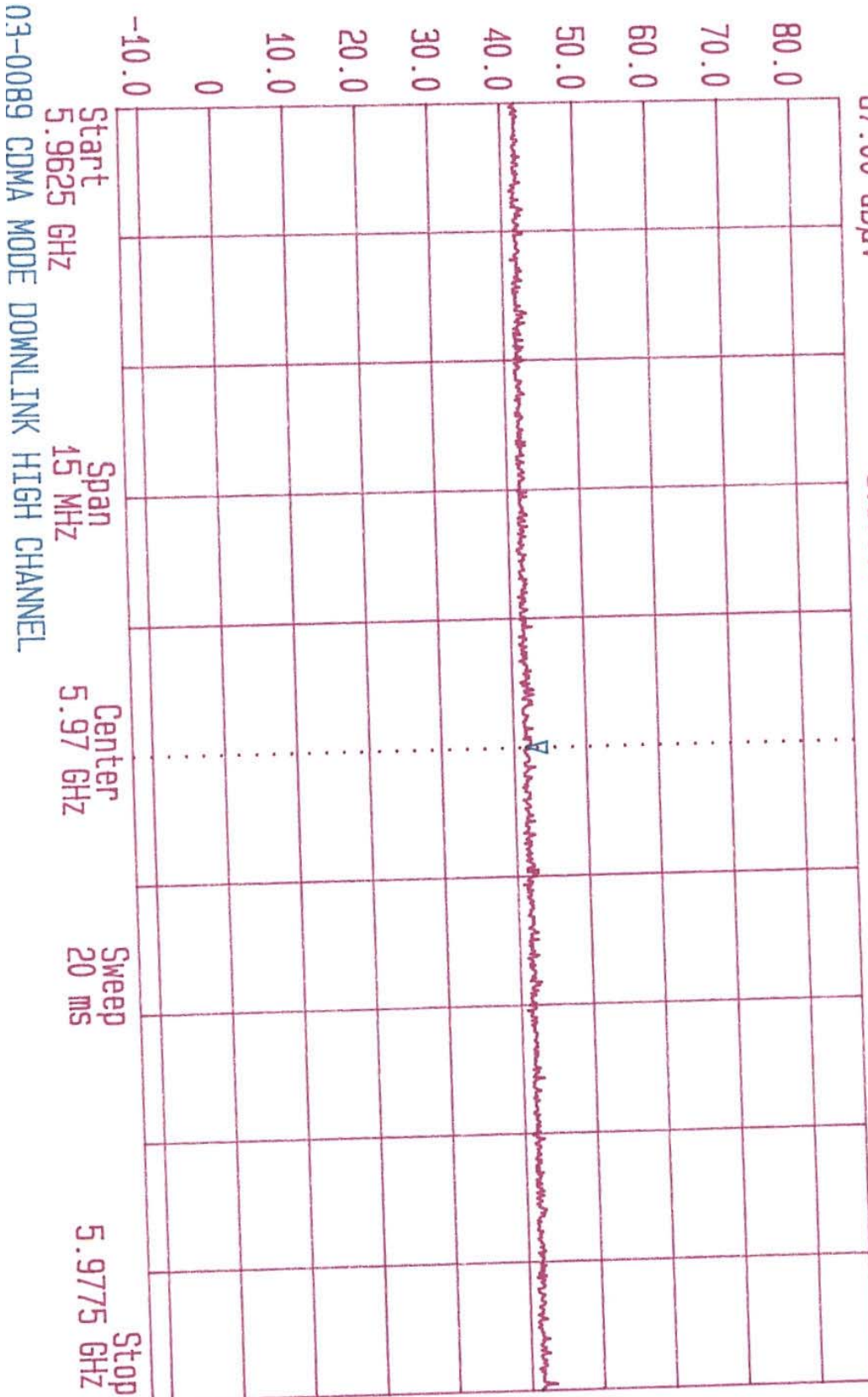
16.Lvl  
CF.Stp  
1.930 GHz  
RF.Att  
Unit  
5 dB  
[dBµV]



PA
10



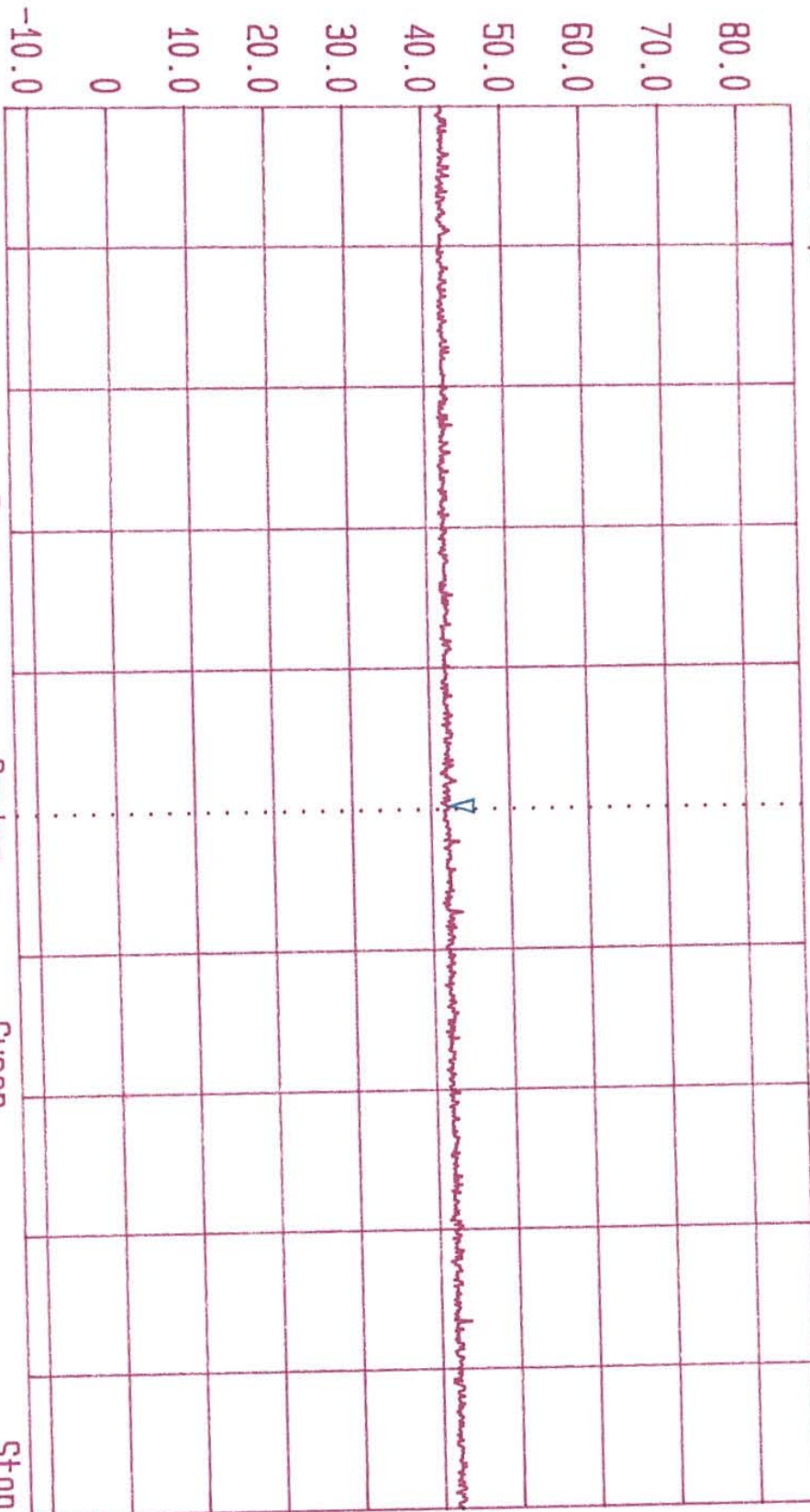
Date 09.Mar.'03 Time 10:19:00  
 Ref.Lvl 87.00 dBµV Marker 41.58 dBµV  
 5.97000 GHz TG.Lvl 1  
 CF.Stp 1.990 GHz U11  
 RF.Att Unit 5 dB  
 [dBµV]



PA
10



Date 09.Mar.'03 Time 10:25:52  
 Ref.Lvl 87.00 dBµV Marker 7.95998 GHz  
 TG.Lvl1 CF.Stp 1.990 GHz  
 RF:Att Unit 5 dB [dBµV]



Start 7.9525 GHz  
 Span 15 MHz  
 Center 7.96 GHz  
 Sweep 20 ms  
 Stop 7.9675 GHz  
 03-0089 CDMA MODE DOWNLINK HIGH CHANNEL

PA
10