



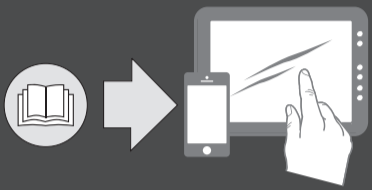
# XS Wireless IEM

## Wireless In-Ear Monitoring System

Model: XSW IEM SR  
XSW IEM EK

- |                             |                    |
|-----------------------------|--------------------|
| Quick Guide                 | Kort vejledning    |
| Kurzanleitung               | Παράρτημα          |
| Guide de démarrage rapide   | Σύνοψες οδηγίες    |
| Guida rapida                | Kısa Kılavuz       |
| Instrucciones resumidas     | Краткая инструкция |
| Instruções resumidas        | 快速指南               |
| Beknopte gebruiksaanwijzing | 快速使用指南             |
| Krótko instrukcja obsługi   | クイックガイド            |
| Snabbguide                  | 요약 안내서             |
|                             | عري رس دشوم        |

SENNHEISER



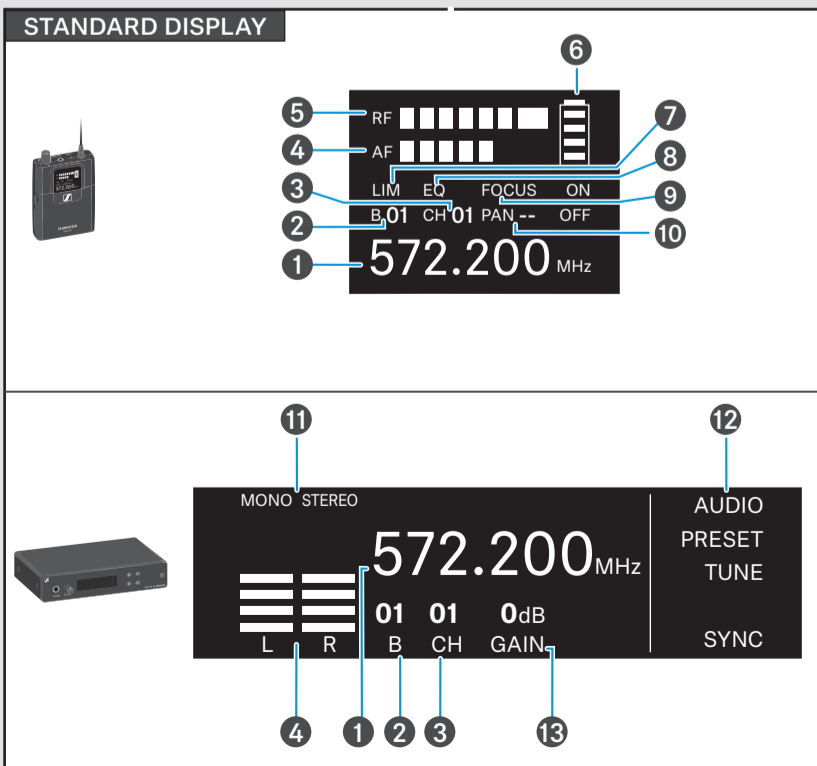
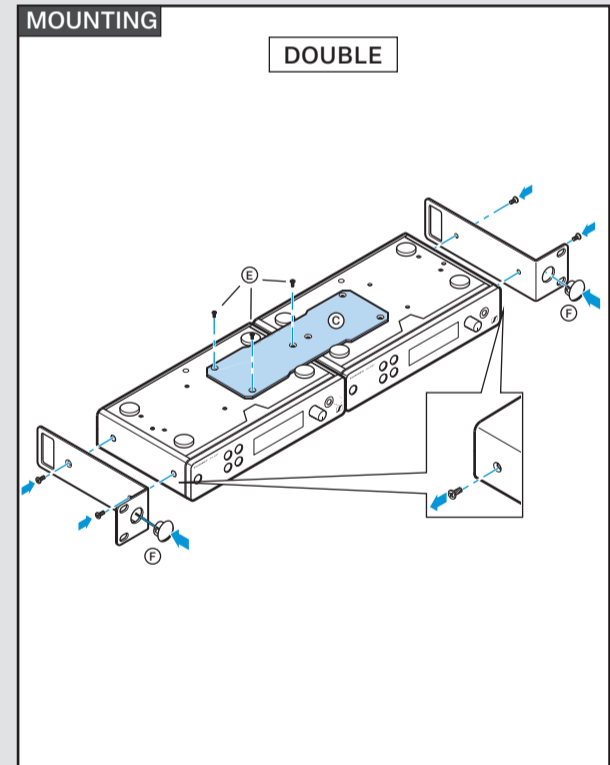
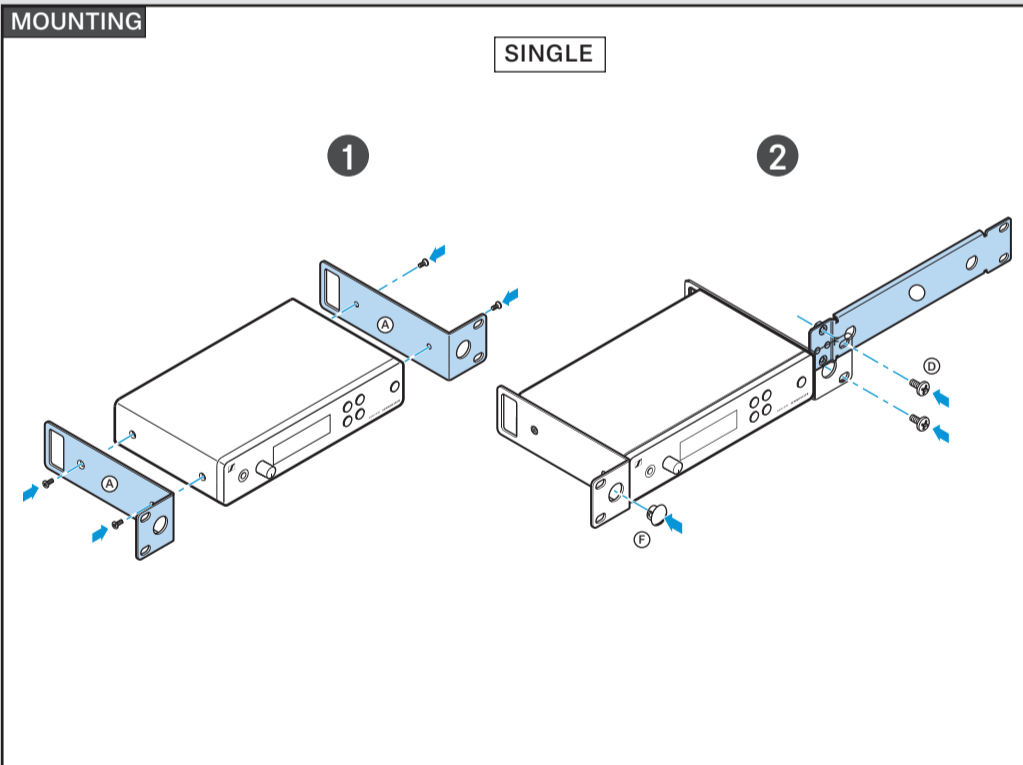
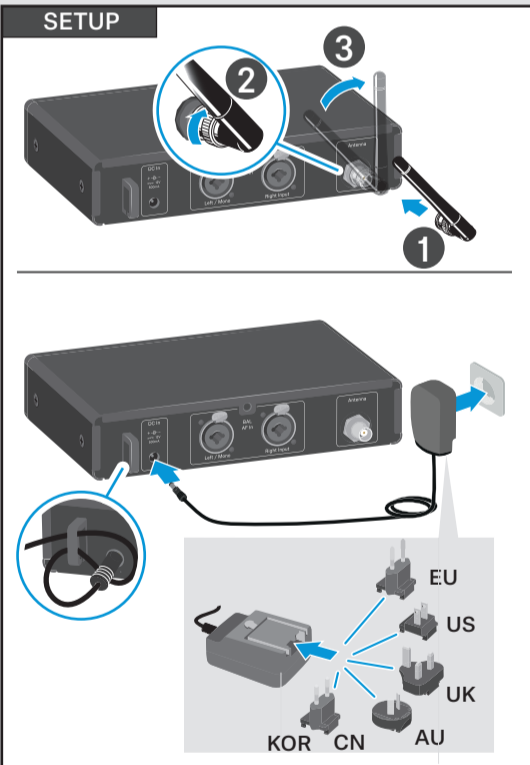
Sennheiser Documentation App



or online at  
[www.sennheiser.com/download](http://www.sennheiser.com/download)  
XSW IEM\_

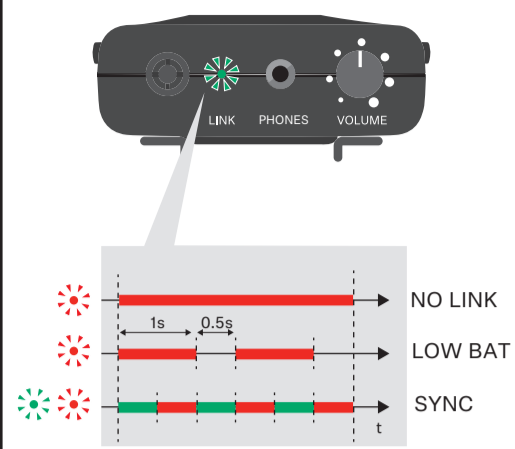
Sennheiser electronic GmbH & Co. KG  
Am Labor 1, 30900 Wedemark, Germany  
[www.sennheiser.com](http://www.sennheiser.com)  
Publ. 09/20, 587447/A01

IN THE BOX	XS WIRELESS IEM	SET	EK	SR
Bodypack Receiver		✓	✓	
Stationary Transmitter		✓		✓
Antenna		✓		✓
NT 12-5CW		✓		✓
IE 4 Headphone		✓		✓
2 x AA LR6 1.5 V		✓	✓	
XSW Rack Mount Kit		✓		

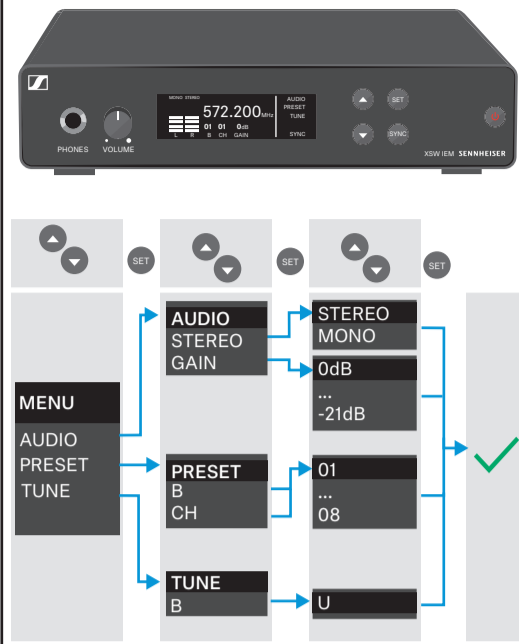


- STANDARD DISPLAY
- Frequency
  - Bank
  - Channel
  - Audio Level
  - RF Signal Level
  - Battery Status
  - Limiter (ON/OFF)
  - Equalizer (ON/OFF)
  - Focus (ON/OFF)
  - Panorama (L09 -- R09)
  - Mono/Stereo Settings
  - Menu Settings
  - Input Sensitivity

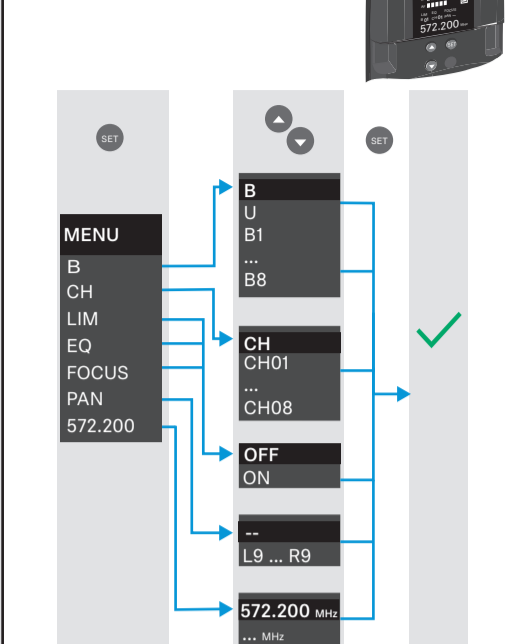
**LED STATUS XSW IEM EK**



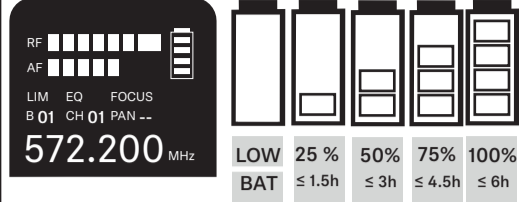
**MENU XSW IEM SR**



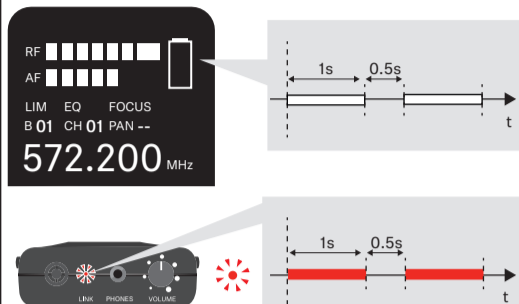
**MENU XSW IEM EK**



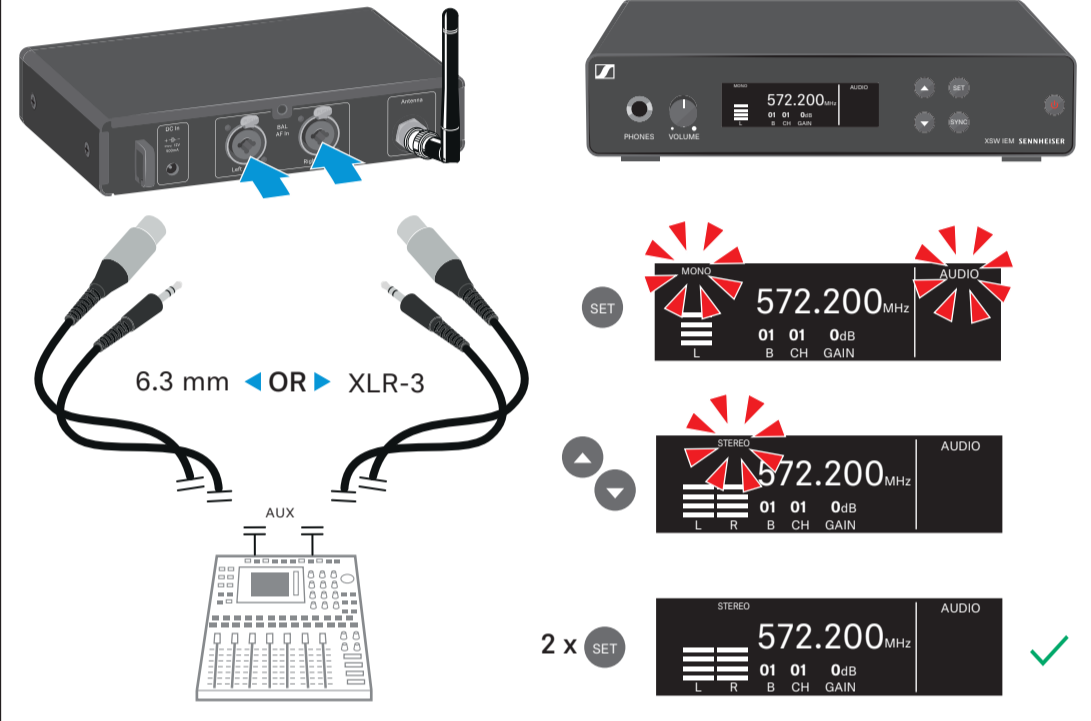
**BATTERY STATUS**



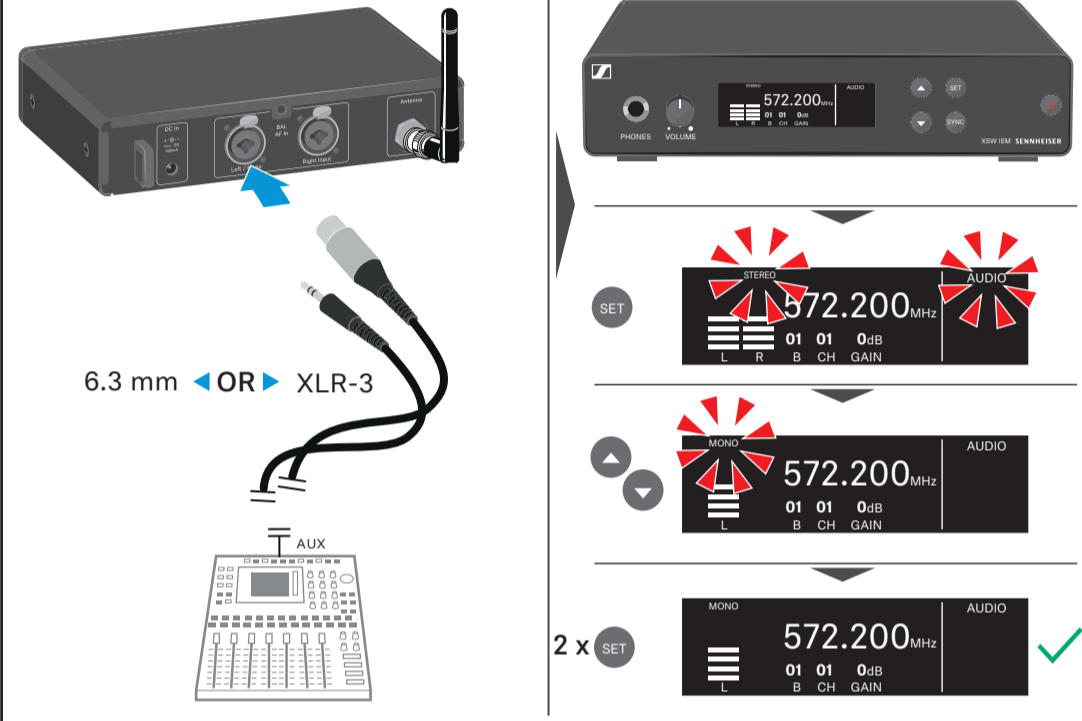
**LOW BATTERY**



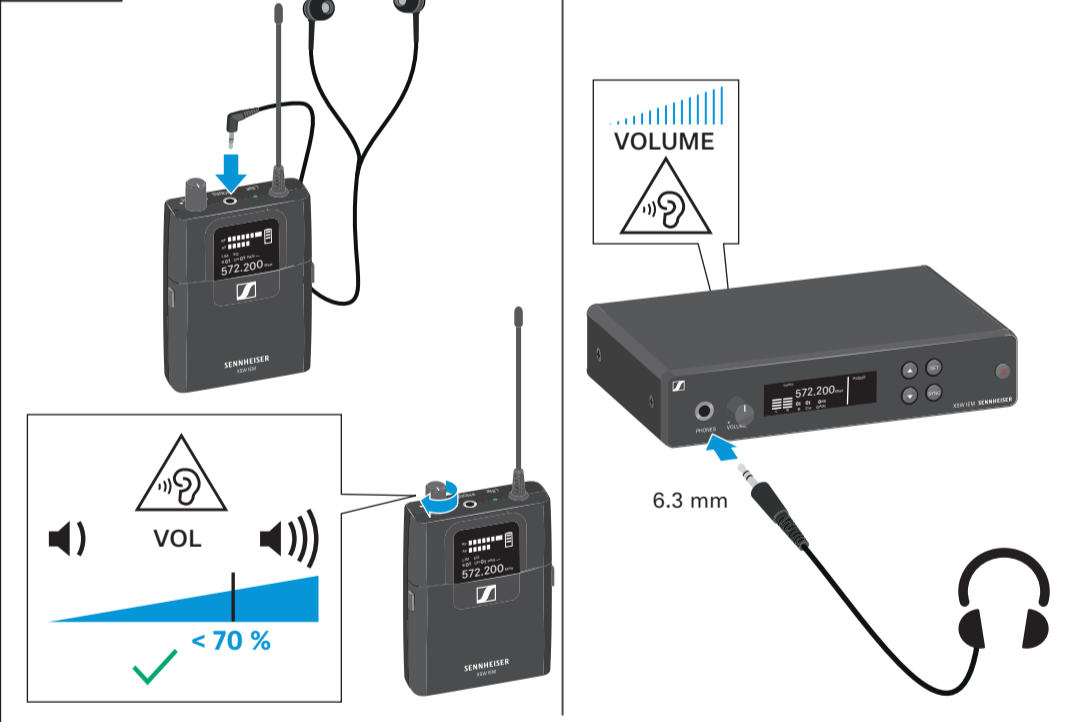
**STEREO**



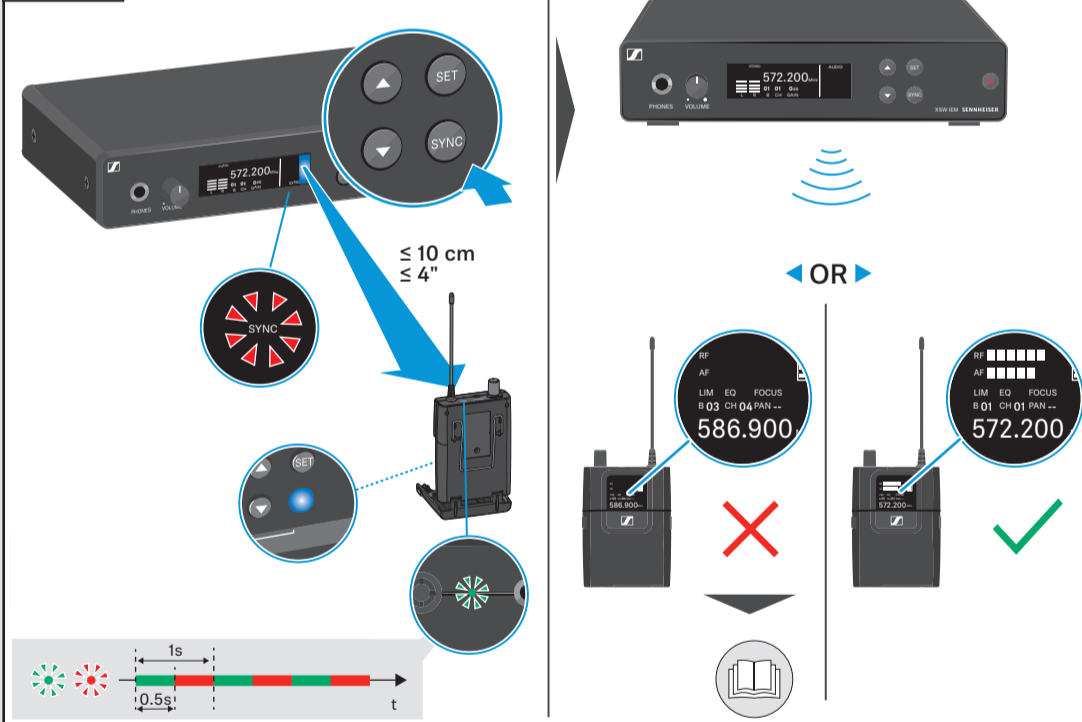
**MONO**



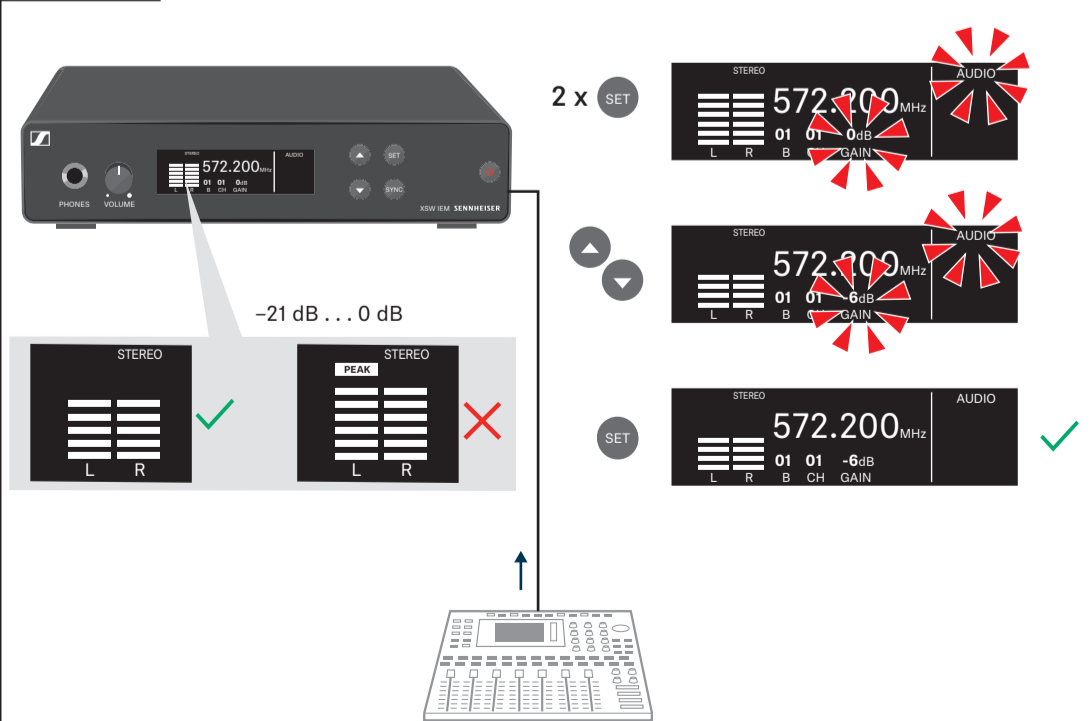
**PHONES**



**SYNC**



**SENSITIVITY**



**MULTICHANNEL SETUP**

