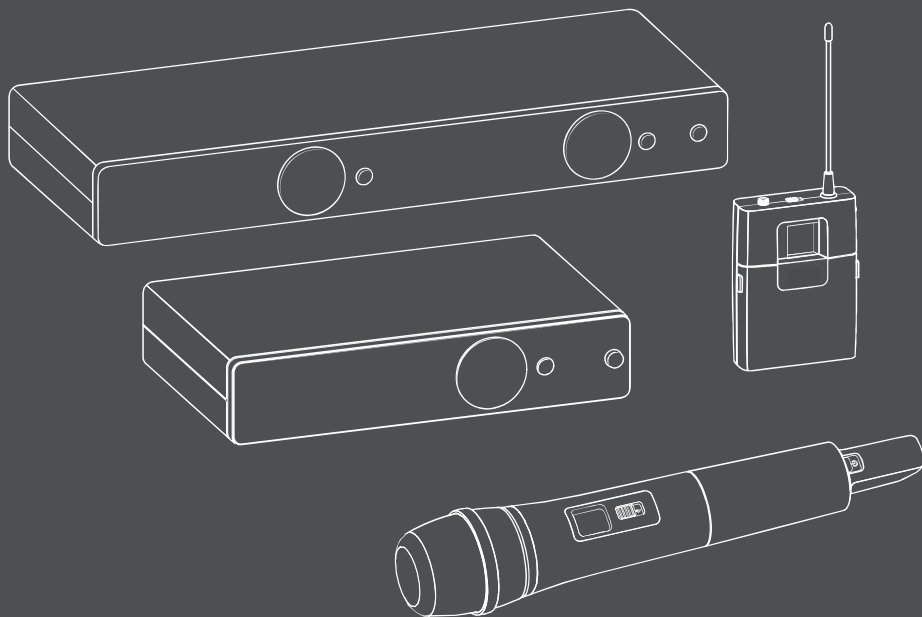


# XS WIRELESS 1



Technische Daten  
Specifications  
Caractéristiques techniques  
Dati tecnici  
Especificaciones técnicas  
Dados técnicos  
Technische specificaties  
Dane techniczne

Tekniska data  
Tekniska data  
Tekniset tiedot  
Τεχνικά χαρακτηριστικά  
Технические характеристики  
技術参数  
기술 데이터

 **SENNHEISER**

# Specifications

## System

Modulation	wideband FM
Frequency ranges	A: 548 to 572 MHz GB: 606 to 630 MHz B: 614 to 638 MHz BC: 670 to 694 MHz C: 766 to 790 MHz D: 794 to 806 MHz JB: 806.125 to 809.750 MHz E: 821 to 832 MHz and 863 to 865 MHz K: 925 to 937.5 MHz
Switching bandwidth	up to 24 MHz
Frequencies	8 frequency banks, each with up to 10 factory-preset channels
Signal-to-noise ratio	≥ 103 dBA
THD	≤ 0.9%
Temperature range	operation: 0°C to +40°C storage: -20°C to +70°C
Transmitter synchronization	2.4 GHz, RF Power <3 mW, MSK (only active during synchronization)

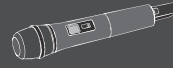


## Receiver

	EM-XSW1	EM-XSW1 DUAL
Receiver principle	double superheterodyne	
Diversity principle	antenna switching diversity via internal antennas	
Sensitivity (at peak deviation)	< 3 μV at 52 dB(A) <sub>rms</sub> S/N	
AF frequency response	50 to 16,000 Hz (-3 dB)	
Max. AF output voltage (at peak deviation, 1 kHz AF)	1/4" (6.3 mm) jack socket (unbalanced): +6 dBu XLR socket (balanced): +12 dBu	
Audio adjustment range	45 dB, adjustable in 5-dB steps	
Power supply	12 V <sub>DC</sub> nom. / 300 mA	12 V <sub>DC</sub> nom. / 500 mA
Squelch	adjustable from 3 dBμV to 28 dBμV (combined with pilot tone)	
Line/Mic level	20 dB, switchable	
Housing material	rugged ABS housing	
Dimensions (W x H x D)	approx. 200 x 42 x 127 mm	approx. 320 x 42 x 127 mm
Weight	approx. 340 g	approx. 610 g

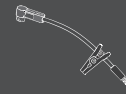
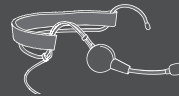
- DE
- EN
- FR
- IT
- ES
- PT
- NL
- PL
- SE
- DK
- FI
- GR
- RU
- ZH
- KO
- COMPLIANCE

## Transmitters



	SK-XSW	SKM-XSW	
		e 825	e 835
RF output power	10 mW		
AF frequency response	50 to 16,000 Hz (Line) 80 to 16,000 Hz (Mic)	80 to 14,000 Hz	80 to 16,000 Hz
Audio input	3.5 mm jack socket	–	
Max. input voltage (Mic/Line) at 3% THD	typ. 1.5 V <sub>RMS</sub> Mic/ typ. 2.6 V <sub>RMS</sub> Line @ –30 dB Gain	–	
Power supply	2 AA size batteries, 1.5 V	2 AA size batteries, 1.5 V	
Operating time	approx. 10 hours		
Microphone type	–	dynamic	
Input sensitivity (capsule)	–	1.5 mV/Pa	
Pick-up pattern	–	cardioid	
Adjustment range of transmitter sensitivity	0 to –30 dB, adjustable in 10-dB steps		
Housing material	rugged ABS housing		
Dimensions	approx. 71 x 96 x 28 mm (W x H x D)	approx. 260 x 50 mm (L x Ø)	
Weight	approx. 95 g	approx. 245 g	

## Microphones



	ME 2	ME 3	e 908T
Transducer principle	condenser, pre-polarized	condenser, pre-polarized	condenser, pre-polarized
Sensitivity	20 mV/Pa	1.6 mV/Pa	0.6 mV/Pa
Pick-up pattern	omni-directional	cardioid	Cardioid
Max. SPL	130 dB	150 dB	147 dB

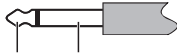
## NT 12-5CW power supply unit

Nominal input voltage	100 to 240 V~
Power frequency	50 or 60 Hz
Input current	≤ max. 200 mA
Nominal output voltage	12 V $\overline{=}$
Output current	≤ 500 mA
Standby power consumption	≤ 0.075 W @230 V AC ≤ 0.1 W @115 V AC
Energy efficiency level	DoE Level VI
Temperature range	0°C to +40°C
Storage temperature	-20°C to +60°C
Relative air humidity	max. 95%
Weight (without adapter)	approx. 65 g
Cable length	approx. 1.83 m

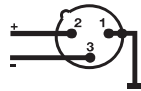
## Connector assignment

### EM-XSW1

1/4" (6.3 mm) mono jack plug

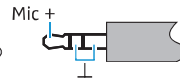
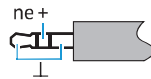


XLR-3 connector



### SK-XSW

3.5 mm jack plug



DE

EN

FR

IT

ES

PT

NL

PL

SE

DK

FI

GR

RU

ZH

KO

COMPLIANCE

## Manufacturer Declarations

### Warranty

Sennheiser electronic GmbH & Co. KG gives a warranty of 24 months on this product. For the current warranty conditions, please visit our website at [www.sennheiser.com](http://www.sennheiser.com) or contact your Sennheiser partner.

### Warranty FOR AUSTRALIA and NEW ZEALAND ONLY:

Sennheiser Australia Pty Ltd provides a warranty of 24 months on these products.

For the current warranty conditions, visit Sennheiser website:

Australia: <https://en-au.sennheiser.com/>

New Zealand: <https://en-nz.sennheiser.com/>

Sennheiser goods come with guarantees that cannot be excluded under Australian and New Zealand Consumer law. You are entitled to a replacement or refund for a major failure and compensation for any other reasonably foreseeable loss or damage. You are also entitled to have the goods repaired or replaced if the goods fail to be of acceptable quality and the failure does not amount to a major failure.

This warranty is in addition to other rights or remedies under law. Nothing in this warranty excludes, limits or modifies any remedy available to be consumer which is granted by law.

To make a claim under this contract, raise a case via Sennheiser website

Australia: <https://en-au.sennheiser.com/service-support-contact>

New Zealand: <https://en-nz.sennheiser.com/service-support-contact>

All expenses of claiming the warranty will be borne by the person making the claim.

Sennheiser international warranty is provided by: Sennheiser Australia Pty Ltd (ABN 68 165 388 312) Level 14, Tower A Zenith Building, 821 Pacific Highway, Chatswood NSW 2067, Australia

### In compliance with the following requirements

EU: WEEE Directive (2012/19/EU)

UK: WEEE Regulations (2013)



EU: Battery Directive (2013/56/EU & 2006/66/EU)

UK: Battery Regulations (2015)



### Notes on disposal

The symbol of the crossed-out wheeled bin on the product, the battery/rechargeable battery and/or the packaging indicates that these products must not be disposed of with normal household waste, but must be disposed of separately at the end of their operational lifetime.

Further information on the recycling of these products can be obtained from your municipal administration, from the municipal collection points, or from your Sennheiser partner.

The separate collection of waste electrical and electronic equipment, batteries/rechargeable batteries and packagings is used to promote the reuse and recycling and to prevent negative effects caused by e.g. potentially hazardous substances contained in these products. Herewith you make an important contribution to the protection of the environment and public health.

### UK Declaration of Conformity

- RoHS Regulations (2012)
- Radio Equipment Regulations (2017)

### CE Declaration of Conformity

- RoHS Directive (2011/65/EU)

Hereby, Sennheiser electronic GmbH & Co. KG declares that the radio equipment type XS WIRELESS 1 consisting of SKM-XSW, SK-XSW, EM-XSW1 and EM-XSW1 DUAL is in compliance with Directive 2014/53/EU

The full text of this declaration is available at [www.sennheiser.com/download](http://www.sennheiser.com/download).

Information about approvals and certifications can be found in the "Compliance" section.

### Conditions and restrictions for using frequencies

There may be special conditions and restrictions for using frequencies in your country. Before putting the product into operation, find the information for your country at the following address: [www.sennheiser.com/frequency-information](http://www.sennheiser.com/frequency-information)

DE

EN

FR

IT

ES

PT

NL

PL

SE

DK

FI

GR

RU

ZH

KO

COMPLIANCE

### Statements regarding the FCC and Industry Canada rules

This device complies with part 15 of the FCC rules and RSS-210 of Industry Canada. Operation is subject to the following two conditions: (1) This device may not cause harmful interference, and (2) this device must accept any interference received, including interference that may cause undesired operation.

This class B digital device complies with the Canadian ICES-003.

Changes or modifications made to this equipment not expressly approved by Sennheiser electronic Corp. may void the FCC authorization to operate this equipment. Before putting the device into operation, please observe the respective country-specific regulations!

#### **Caution:**

You are cautioned that any changes or modifications not expressly approved in the instruction manual could void your authority to operate this equipment. Wireless microphone users shall rely on the white space databases in part 15 to determine that their intended operating frequencies are available for unlicensed wireless microphone operation at the location where they will be used. Wireless microphone users must register with and check a white space database to determine available channels prior to beginning operation at a given location. A user must re-check the database for available channels if it moves to another location.

#### **RSS-210 Issue 9 Annex G.1**

This device operates on a no-protection, no-interference basis. Should the user seek to obtain protection from other radio services operating in the same TV bands, a radio licence is required. For further details, consult Innovation, Science and Economic Development Canada's document Client Procedures Circular CPC-2-1-28, Voluntary Licensing of Licence-Exempt Low-Power Radio Apparatus in the TV Bands.



Sennheiser electronic GmbH & Co. KG

Am Labor 1, 30900 Wedemark, Germany  
[www.sennheiser.com](http://www.sennheiser.com)

Printed in Taiwan, Publ. 10/21, 571314/A12



# XS WIRELESS 1

## Quick Guide

Kurzanleitung | Guide rapide | Guida rapida | Guia de inicio rápido | Guia rápido | Beknopte handleiding | Krótka instrukcja obsługi | Snabbguide | Quickguide | Quick Guide | Γρήγορος οδηγός | Краткая инструкция | 快速指南 | 요약 설명서

In the box	Vocal Sets		Instrument Sets		Lavalier Set	Headmic Set
	XSW 1-825	XSW 1-835	XSW 1-C1	XSW 1-908	XSW 1-ME2	XSW 1-ME3
EM-XSW 1	•	•	•	•	•	•
NT 12-5CW	•	•	•	•	•	•
SKM 825-XSW	•	•	•	•	•	•
MZQ 1	•	•	•	•	•	•
SKM 835-XSW	•	•	•	•	•	•
SK-XSW	•	•	•	•	•	•
e 908T	•	•	•	•	•	•
ME 2	•	•	•	•	•	•
ME 3	•	•	•	•	•	•
CI 1-N	•	•	•	•	•	•
2 x AA LR6 1.5	•	•	•	•	•	•

### Battery

### Low battery

~ 10 h	[Full battery icon]
~ 7 h	[Partially charged battery icon]
~ 3 h	[Low battery icon]
Low Batt	[Low battery icon]

### Setup

EU	US
UK	KOR
AU	

### On/off

### Display

EM-XSW 1

### Volume

◀ 0...9

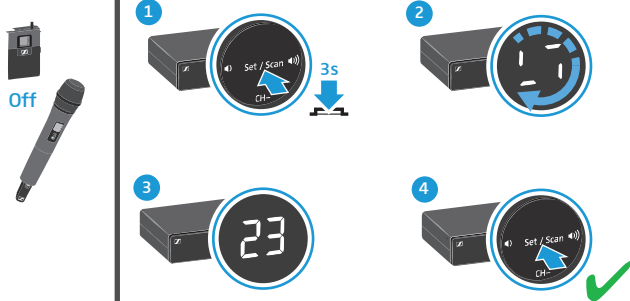
### Mute

Sennheiser electronic GmbH & Co. KG  
 Am Labor 1, 30900 Wedemark, Germany  
 www.sennheiser.com  
 Printed in Taiwan, Publ. 10/21, 571312/A02

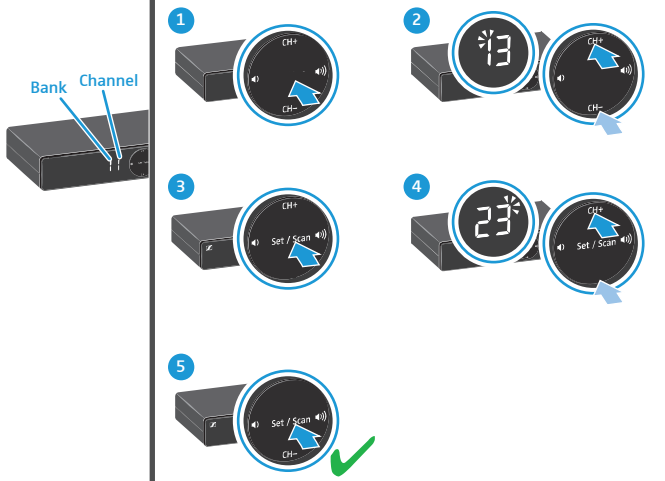


## Change frequency

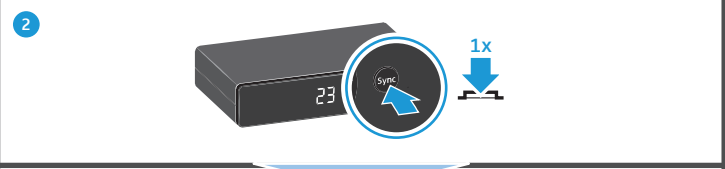
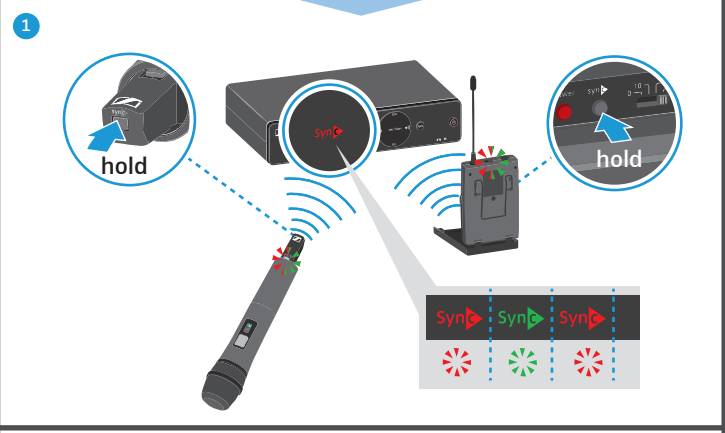
### Automatically/Scan



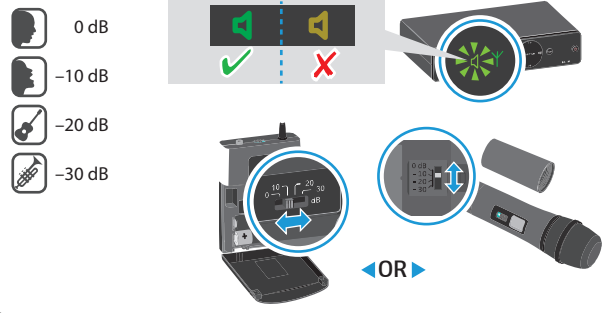
### Manually



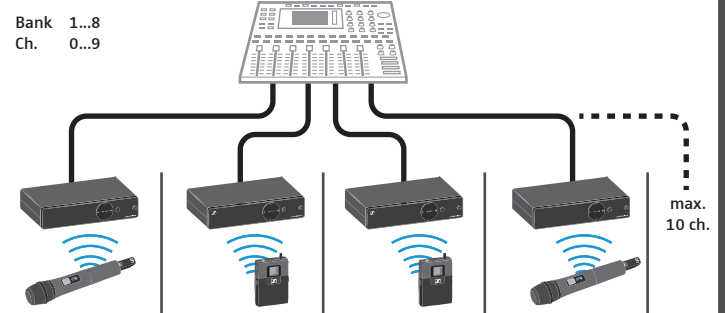
## Sync



## Sensitivity

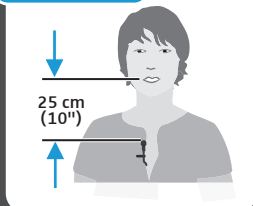


## Multichannel



Bank	Ch.	Bank	Ch.	Bank	Ch.	Bank	Ch.	
2	3	2	4	2	5	2	6	✓
1	1	1	2	1	3	1	8	✓
2	3	1	3	4	7	8	9	✗
2	3	2	3	2	3	2	3	✗

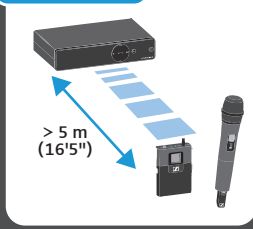
## ME 2



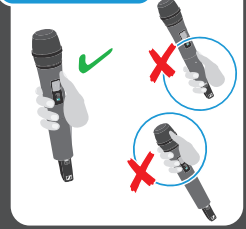
## ME 3



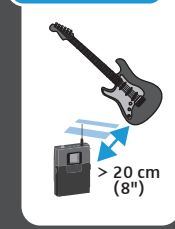
## Min. distance



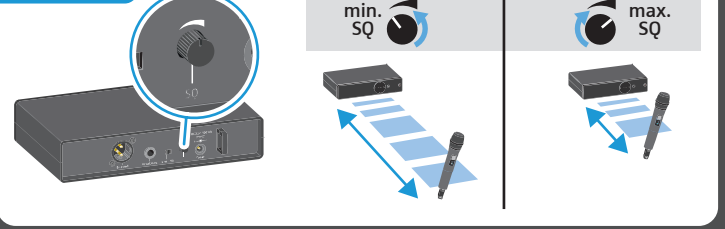
## SKM



## Guitar pickup



## Squelch



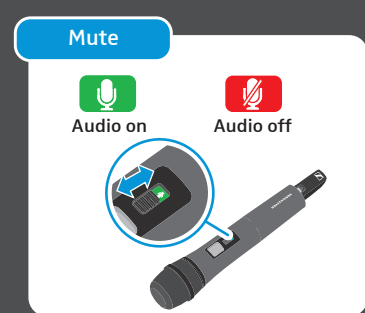
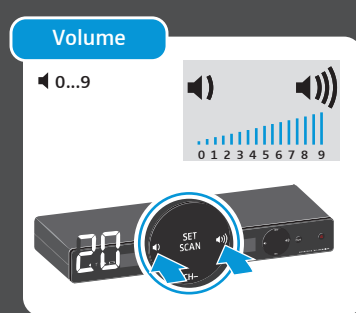
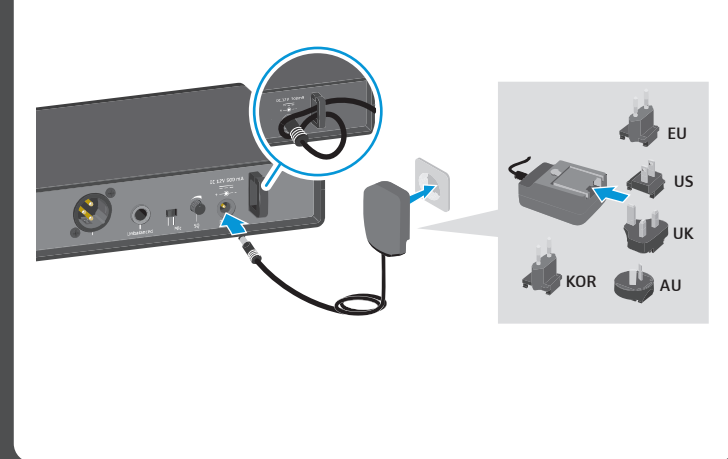
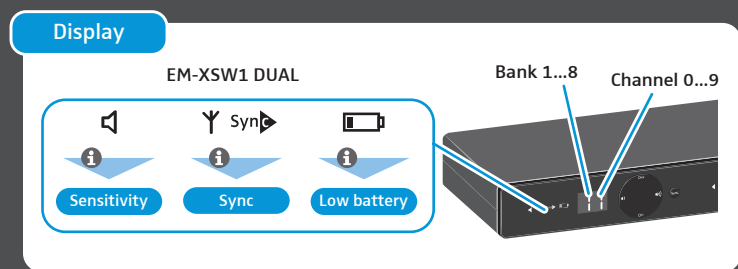
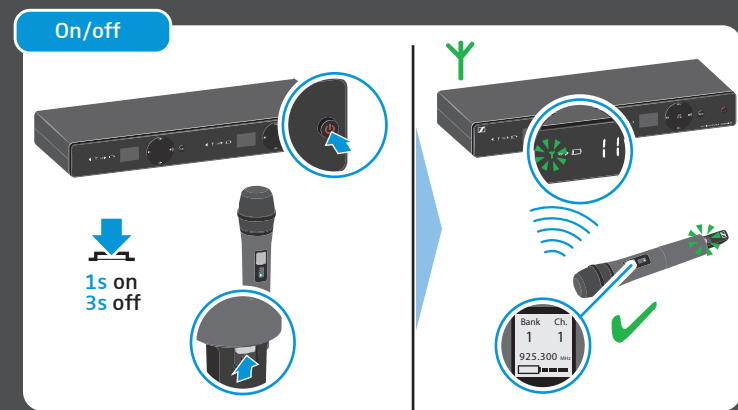
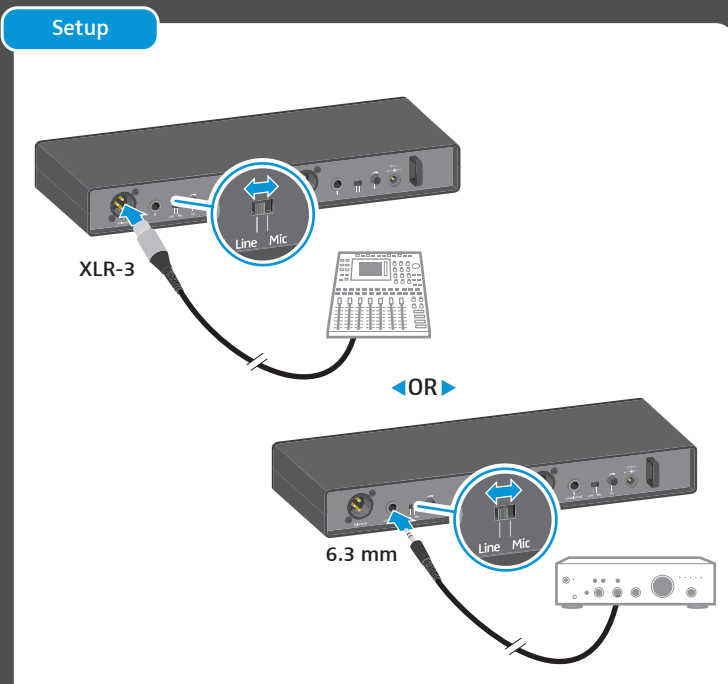
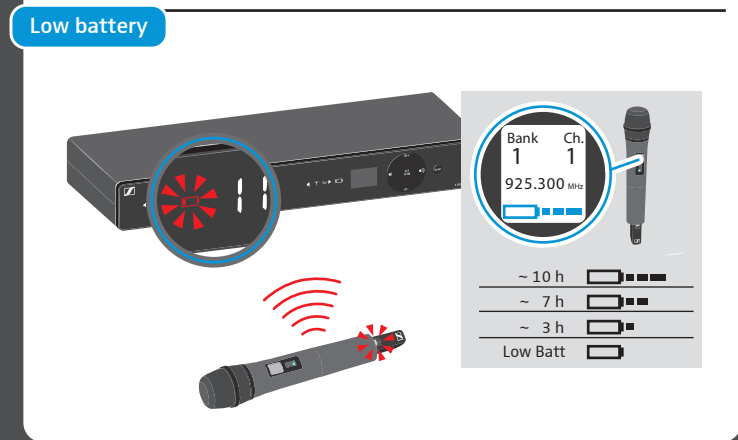
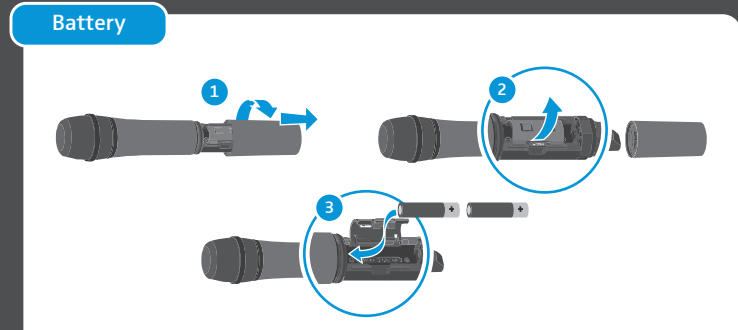
www.sennheiser.com/XSW1

# XS WIRELESS 1 DUAL

## Quick Guide

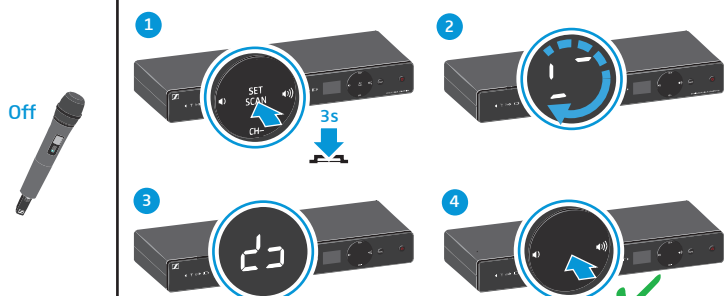
Kurzanleitung | Guide rapide | Guida rapida | Guia de inicio rápido | Guia rápido | Beknopte handleiding | Krótka instrukcja obsługi | Snabbguide | Quickguide | Quick Guide | Γρήγορος οδηγός | Краткая инструкция | 快速指南 | 요약 설명서

In the box	Vocal Sets	
	XSW 1-825 DUAL	XSW 1-835 DUAL
<b>XS WIRELESS 1 DUAL</b>  NT 12-5CW	1	1
 SKM-XSW e825	2	-
 SKM-XSW e835	-	2
 MZQ 1	2	2
 AA LR6 1.5 V	4	4

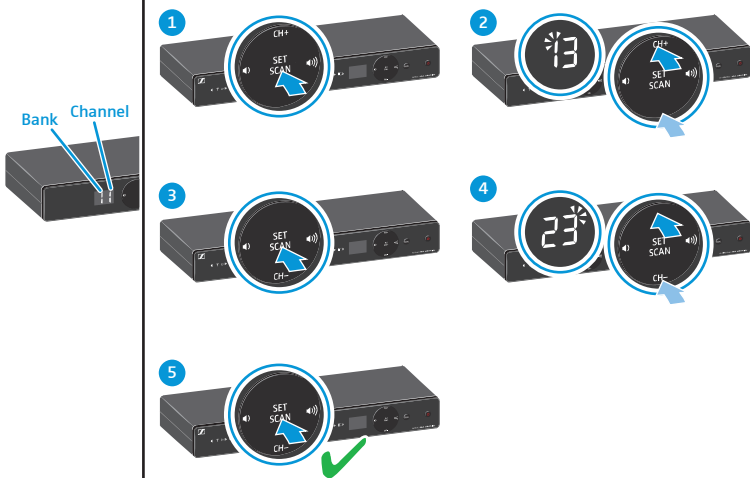


### Change frequency

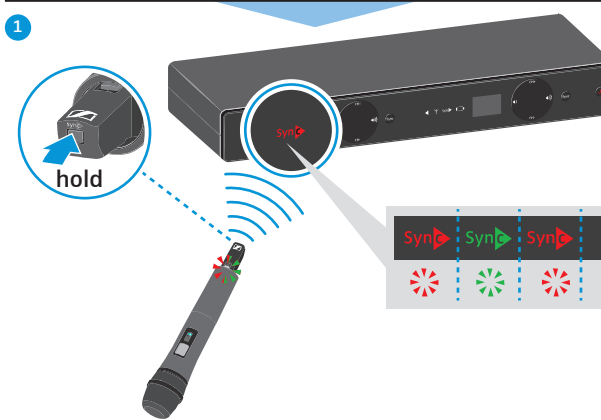
#### Automatically/Scan



#### Manually

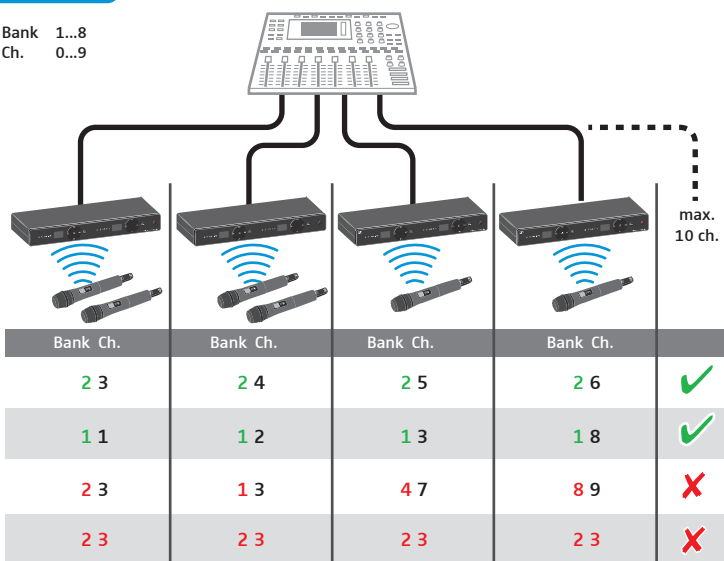


### Sync



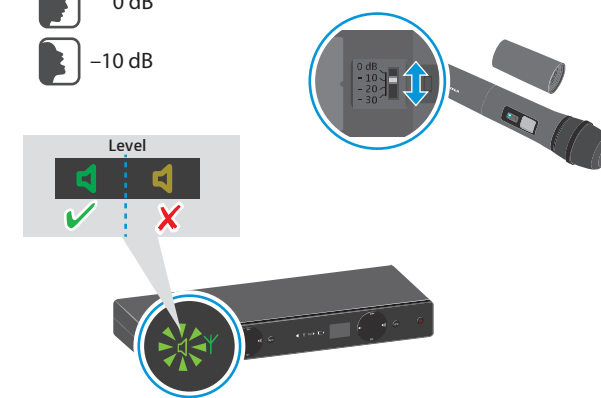
### Multichannel

Bank 1...8  
Ch. 0...9

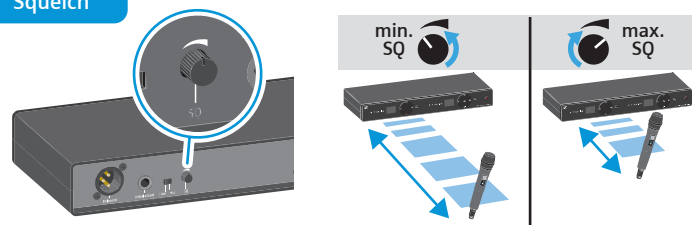


### Sensitivity

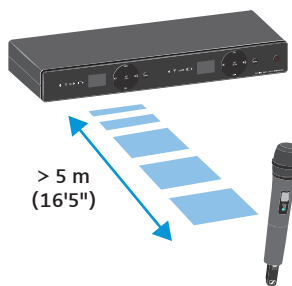
0 dB  
-10 dB



### Squelch



### Min. distance



### SKM

