



Accredited testing-laboratory

DAR registration number: DAT-P-176/94-D1

**Federal Motor Transport Authority (KBA)
DAR registration number: KBA-P 00070-97**

Recognized by the Federal Communications Commission

Anechoic chamber registration no.: 90462 (FCC)

Anechoic chamber registration no.: 3463A-1 (IC)

Certification ID: DE 0001

Accreditation ID: DE 0002

Accredited Bluetooth® Test Facility (BQTF)

The Bluetooth word mark and logos are owned by the Bluetooth SIG, Inc. and any use of such marks by Cetecom ICT is under license

Test report no. : 2-4886-01-03/08 A
Type identification : SKM 2020 D-US
Applicant : Sennheiser electronic GmbH & Co. KG
FCC ID : DMOSKM2020D
IC Certification No : 2099A-SKM2020D
Test standards : 47 CFR Part 15
RSS - 210 Issue 7

Table of contents

1	General information	3
1.1	Notes	3
1.2	Testing laboratory	4
1.3	Details of applicant	4
1.4	Application details	4
2	Test standard/s:	5
3	Technical tests	6
3.1	Details of manufacturer	6
3.1.1	Test item	6
3.1.2	Additional EUT information For IC Canada (appendix 2)	7
3.1.3	EUT operating modes	8
3.1.4	Extreme conditions testing values	8
4	Statement of Compliance	9
4.1	Summary of Measurement Results	9
4.1.1	CFR 47 Part 15 Radio frequency devices	9
5	Measurements and results	10
6	FCC Part 15 Subpart C	11
6.1	Timing of the transmitter	11
6.2	Field Strength of the Fundamental	12
6.3	Field Strength of the Harmonics and Spurious	13
6.4	Receiver Spurious Emission (radiated)	20
6.5	Conducted Limits	23
7	Test equipment and ancillaries used for tests	24
8	Photographs of the Test Set-up	28
9	Photographs of the EUT	29

1 General information

1.1 Notes

The test results of this test report relate exclusively to the test item specified in 3.1.1. The CETECOM ICT Services GmbH does not assume responsibility for any conclusions and generalisations drawn from the test results with regard to other specimens or samples of the type of the equipment represented by the test item. The test report may only be reproduced or published in full. Reproduction or publication of extracts from the report requires the prior written approval of the CETECOM ICT Services GmbH.

Test laboratory manager:

2008-07-29

Stefan Bös

Date

Name

Signature



Technical responsibility for area of testing:

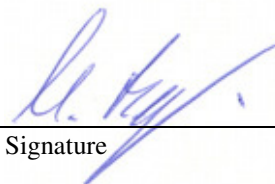
2008-07-29

Michael Berg

Date

Name

Signature



1.2 Testing laboratory

CETECOM ICT Services GmbH

Untertürkheimer Straße 6 - 10
66117 Saarbrücken
Germany

Phone: + 49 681 5 98 - 0

Fax: + 49 681 5 98 - 9075

e-mail: info@ICT.cetecom.de

Internet: http://www.cetecom-ict.de

State of accreditation: The test laboratory (area of testing) is accredited according to
DIN EN ISO/IEC 17025
DAR registration number: DAT-P-176/94-D1

Accredited by: Federal Motor Transport Authority (KBA)
DAR registration number: KBA-P 00070-97

Testing location, if different from CETECOM ICT Services GmbH:

Name :
Street :
Town :
Country :
Phone :
Fax :

1.3 Details of applicant

Name:	Sennheiser electronic GmbH & Co. KG
Street:	Am Labor 1
Town:	30900 Wedemark
Country:	Germany
Telephone:	+49 (0) 5130 6 00 -0
Fax:	+49 (0) 5130 600 330
Contact:	Herrn Volker Bartsch
E-mail:	bartschv@sennheiser.com
Telephone:	+49 (0) 5130 600 465

1.4 Application details

Date of receipt of order:	2008-05-27
Date of receipt of test item:	2008-06-24
Date of start test:	2008-06-24
Date of end test:	2008-07-14
Persons(s) who have been present during the test:	-/-

2 Test standard/s:

47 CFR Part 15	2007-09	Title 47 of the Code of Federal Regulations; Chapter I- Federal Communications Commission subchapter A - general, Part 15-Radio frequency devices
RSS - 210 Issue 7	2007-06	Spectrum Management and Telecommunications - Radio Standards Specification Low-power Licence-exempt Radiocommunication Devices (All Frequency Bands): Category I Equipment

3 Technical tests

3.1 Details of manufacturer

Name:	Sennheiser electronic GmbH & Co. KG
Street:	Am Labor 1
Town:	30900 Wedemark
Country:	Germany

3.1.1 Test item

Kind of test item	:	Transmitter
Type identification	:	SKM 2020D
S/N serial number	:	-
HW hardware status	:	-
SW software status	:	-
Frequency Band [MHz]	:	926.124 MHz – 927.876 MHz
Type of Modulation	:	2-FSK
Number of channels	:	6
Antenna	:	Internal pcb-antenna
Power Supply	:	2.4 V DC supplied by battery
Temperature Range	:	-10 °C to 55 °C

Max. power radiated: 0.43 dBm

FCC ID: DMOSKM2020D
IC: 2099A-SKM2020D

3.1.2 Additional EUT information For IC Canada (appendix 2)

IC Registration Number:	2099A-SKM2020D
Model Name:	SKM 2020 D-US
Manufacturer (complete Address):	Sennheiser electronic GmbH & Co. KG Am Labor 1 30900 Wedemark Germany
Tested to Radio Standards Specification (RSS) No.:	RSS-210 Issue 7
Open Area Test Site Industry Canada Number:	IC 3463A-1
Frequency Range (or fixed frequency) [MHz]:	926.124 MHz – 927.876 MHz
RF: Power [W] (max):	Rad. EIRP: 0.43 mW Conducted : n.a. mW
Antenna Type:	Internal pcb-antenna
Field Strength [dB μ V/m in 3m]:	93.8
Occupied Bandwidth (99% BW) [kHz]:	78.8
Type of Modulation:	2-FSK
Emission Designator (TRC-43):	78K8F1D
Transmitter Spurious (worst case) [μ V/m in 3m]:	126 (noise floor)
Receiver Spurious (worst case) [μ V/m in 3m]:	126 (noise floor)

ATTESTATION:

I attest that the testing was performed or supervised by me; that the test measurements were made in accordance with the above-mentioned departmental standard(s), and that the radio equipment identified in this application has been subject to all the applicable test conditions specified in the departmental standards and all of the requirements of the standards have been met.

Signature:



Test engineer: Stefan Bös

Date: 2008-07-29

3.1.3 EUT operating modes

EUT operating mode no. *)	Description of operating modes	Additional information
Op. 0	Normal mode	Normal temperature and power source conditions
Op. 1		low temperature, low power source conditions
Op. 2		low temperature, high power source conditions
Op. 3		high temperature, low power source conditions
Op. 4		high temperature, high power source conditions

*) EUT operating mode no. is used to simplify the test plan

3.1.4 Extreme conditions testing values

Description	Shortcut	Unit	Value
Nominal Temperature	T _{nom}	°C	23
Nominal Humidity	H _{nom}	%	62
Nominal Power Source	V _{nom}	V	2.4

Type of power source: **DC – supplied by battery**

Deviations from these values are reported in chapter 2

4 Statement of Compliance

No deviations from the technical specification(s) were ascertained in the course of the tests performed.

4.1 Summary of Measurement Results

4.1.1 CFR 47 Part 15 Radio frequency devices

Section in this Report	Test Name / Section FCC Part 15	Test Name / Section RSS 210 Issue 7	Measurement applicable	Verdict
6.1	§ 15.35 (c) Timing of the transmitter (Duty cycle correction factor)	6.5 Pulsed Operation	No	
6.2	§ 15.249 (a) FIELDSTRENGTH OF FUNDAMENTAL	6.2.2 (m2)(1) 902-928, 2400-2483.5 and 5725-5875 MHz	YES	pass
6.3	§ 15.249 (a) (d) FIELDSTRENGTH OF HARMONICS and SPURIOUS	6.2.2 (m2)(1)(3) 902-928, 2400-2483.5 and 5725-5875 MHz	YES	pass
6.4	§ 15.109 Receiver spurious emissions (radiated)	7.3 Receiver Spurious Emissions (Radiated)	YES	pass
6.5	§ 15.107 / 15.207 Conducted Limits	Section 6.6 , 7.4	No	

5 Measurements and results

The radiated measurements are performed in vertical and horizontal plane in the frequency range from 9 kHz to 20 GHz in semi-anechoic chambers. The EUT is positioned on a non-conductive support with a height of 0.80 m above a conductive ground plane that covers the whole chamber.

The receiving antennas conform with specifications ANSI C63.2-1996 clause 15 and ANSI C63.4-2003 clause 4.1.5. These antennas can be moved over the height range between 1.0 m and 4.0 m in order to search for maximum field strength emitted from EUT. The measurement distances between EUT and receiving antennas are indicated in the test set-ups for the various frequency ranges. For each measurement, the EUT is rotated in all three axes until the maximum field strength is received.

The wanted and unwanted emissions are received by spectrum analysers where the detector modes and resolution bandwidths over various frequency ranges are set according to requirement ANSI C63.4-2003 clause 4.2.

Antennas conform with ANSI C63.2-1996 item 15.

150 kHz - 30 MHz: Quasi Peak measurement, 9kHz Bandwidth, passive loop antenna.

30 MHz - 200 MHz: Quasi Peak measurement, 120KHz Bandwidth, biconical antenna

200MHz - 1GHz: Quasi Peak measurement, 120KHz Bandwidth, log periodic antenna

>1GHz: Average, RBW 1MHz, VBW 10 Hz, wave guide horn

All measurement settings are according to FCC 15.109 and 15.107

6 FCC Part 15 Subpart C

6.1 Timing of the transmitter

Reference

FCC:	CFR Part SUBCLAUSE § 15.35 (c)
IC:	RSS 210, Issue 7 6.5 PULSED OPERATION

Measurement not applicable, transmitter is continuously FSK modulated

Limits: § 15.35 (c)

(c) Unless otherwise specified, e.g. Section 15.255(b), when the radiated emission limits are expressed in terms of the average value of the emission, and pulsed operation is employed, the measurement field strength shall be determined by averaging over one complete pulse train, including blanking intervals, as long as the pulse train does not exceed 0.1 seconds. As an alternative (provided the transmitter operates for longer than 0.1 seconds) or in cases where the pulse train exceeds 0.1 seconds, the measured field strength shall be determined from the average absolute voltage during a 0.1 second interval during which the field strength is at its maximum value. The exact method of calculating the average field strength shall be submitted with any application for certification or shall be retained in the measurement data file for equipment subject to notification or verification.

6.2 Field Strength of the Fundamental

Reference

FCC:	CFR Part SUBCLAUSE § 15.249 (a)
IC:	RSS 210, Issue 7, 6.2.2 (m2)(1) 902-928, 2400-2483.5 and 5725-5875 MHz

MAXIMUM OUTPUT POWER (QUASI PEAK) (RADIATED)

TEST CONDITIONS		MAXIMUM POWER (dB μ V/m)		
		1	4	6
T_{nom} 23 °C	V_{nom} V DC	93.6	93.4	93.8
Maximum deviation from output power under extreme test conditions (dBc)		not applicable	not applicable	not applicable
Measurement uncertainty		±3dB		

RBW/VBW : 1 MHz

Limits

SUBCLAUSE § 15.249 (a)

Fundamental Frequency (MHz)	Field strength of Fundamental (mV/m)	Field strength of Harmonics (V/m)
902-928	50 (94 dBμV/m)	500 (54 dBμV/m)
2400-2483.5	50 (94 dBμV/m)	500 (54 dBμV/m)
5725-5875	50 (94 dBμV/m)	500 (54 dBμV/m)
24.0-24.25 GHz	250 (108 dBμV/m)	2500 (68 dBμV/m)

6.3 Field Strength of the Harmonics and Spurious

Reference

FCC:	CFR Part SUBCLAUSE § 15.249 (a)(d)
IC:	RSS 210, Issue 7, 6.2.2 (m2)(1)(3) 902-928, 2400-2483.5 and 5725-5875 MHz

EMISSION LIMITATIONS					
f (MHz)	amplitude of emission (dBµV/m) Average/QP	limit max. allowed emission power	actual attenuation below frequency of operation (dB)	results	
928	93.8 / QP	94dBµV/m		Operating frequency	
	No critical peaks detected	20 dBc or 46 dBµV/m		Complies	
				Complies	
		20dBc or 54 dBµV/m		Complies	
				Complies	
				Complies	
				Complies	
				Complies	
				Complies	
				Complies	
				Complies	
Measurement uncertainty		± 3dB			

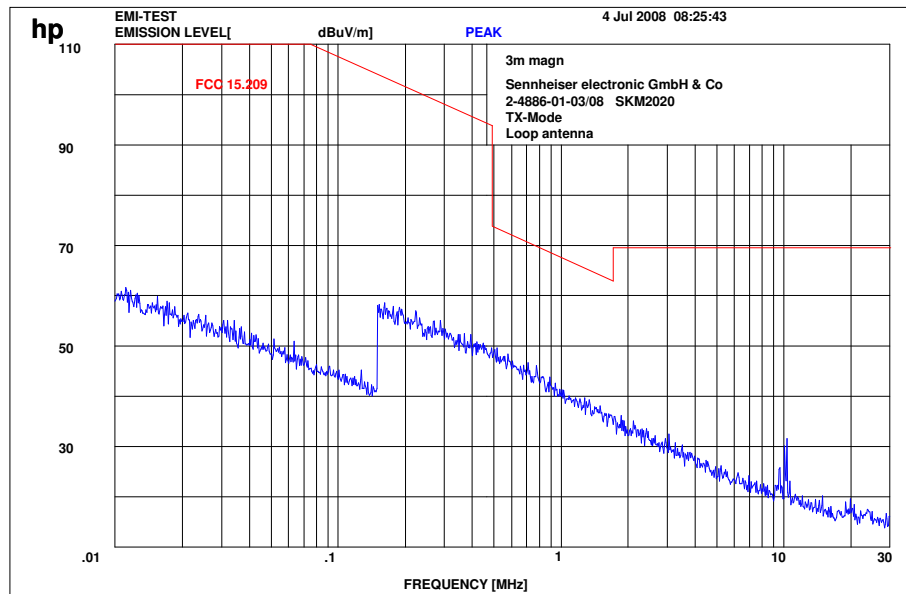
Limits SUBCLAUSE § 15.249 (a)

Fundamental Frequency (MHz)	Field strength of Fundamental (mV/m)	Field strength of Fundamental (µV/m)
902-928	50 (94 dBµV/m)	500 (54 dBµV/m)
2400-2483.5	50 (94 dBµV/m)	500 (54 dBµV/m)
5725-5875	50 (94 dBµV/m)	500 (54 dBµV/m)
24.0-24.25 GHz	250 (108 dBµV/m)	2500 (68 dBµV/m)

Limits SUBCLAUSE § 15.249 (d)

Emissions radiated outside of the specified frequency bands, except for harmonics, shall be attenuated by at least 50 dB below the level of the fundamental or to the general radiated emission limits in Section 15.209, whichever is the lesser attenuation.

Part 15.109 Magnetics



(to convert the measuring distance from 3m to 30m and 30 to 300m a correction factor from 40 dB/decade was used.)

Measurement distance 3m

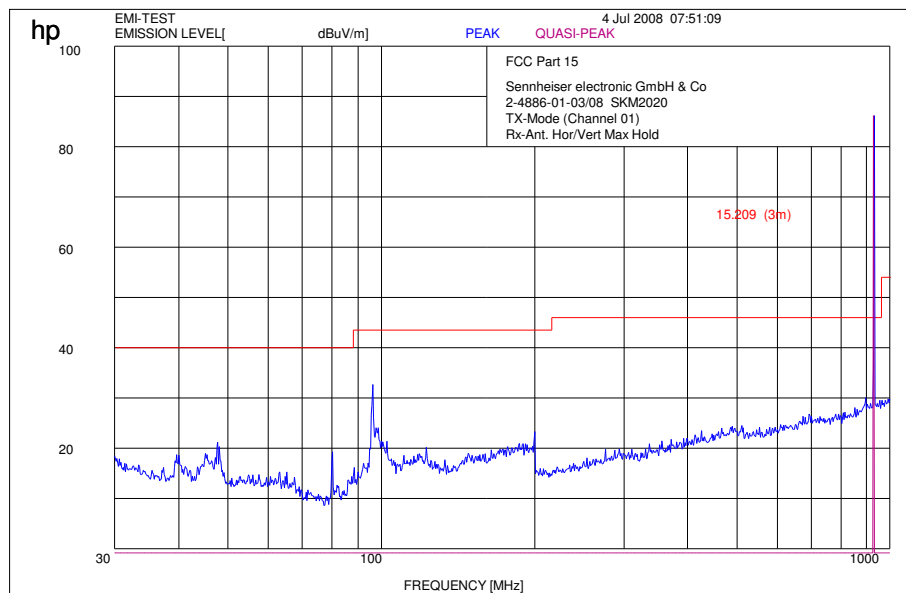
This measurement was done in 3 polarisation's, the plot shows the worst case

Limits

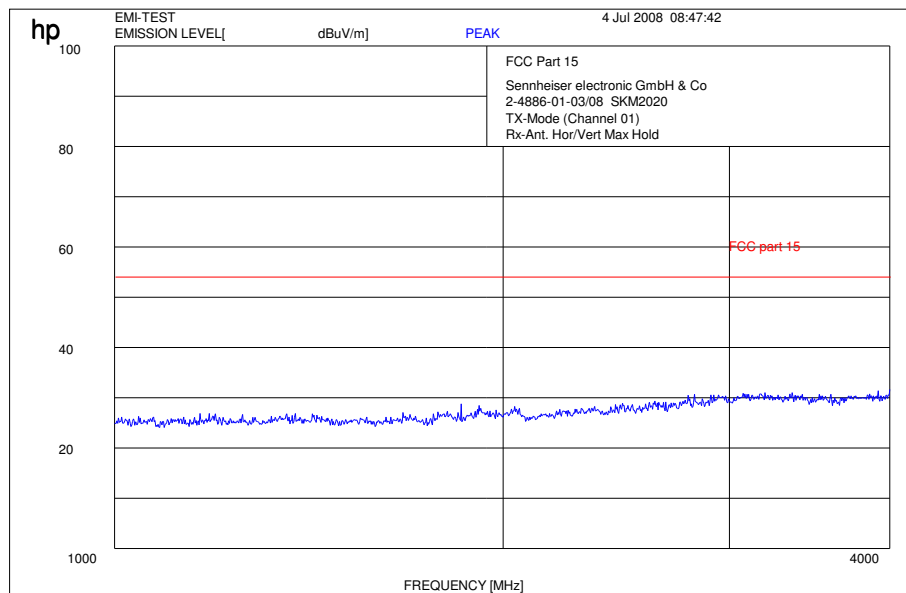
SUBCLAUSE § 15.209

Frequency (MHz)	Field strength ($\mu\text{V/m}$)	Measurement distance (m)
0.0009 – 0.490	2400/F(kHz)	300
0.490 – 1.705	24000/F(kHz)	30
1.705 - 30	30	30
30 - 88	100	3
88 - 216	150	3
216 - 960	200	3
above 960	500	3

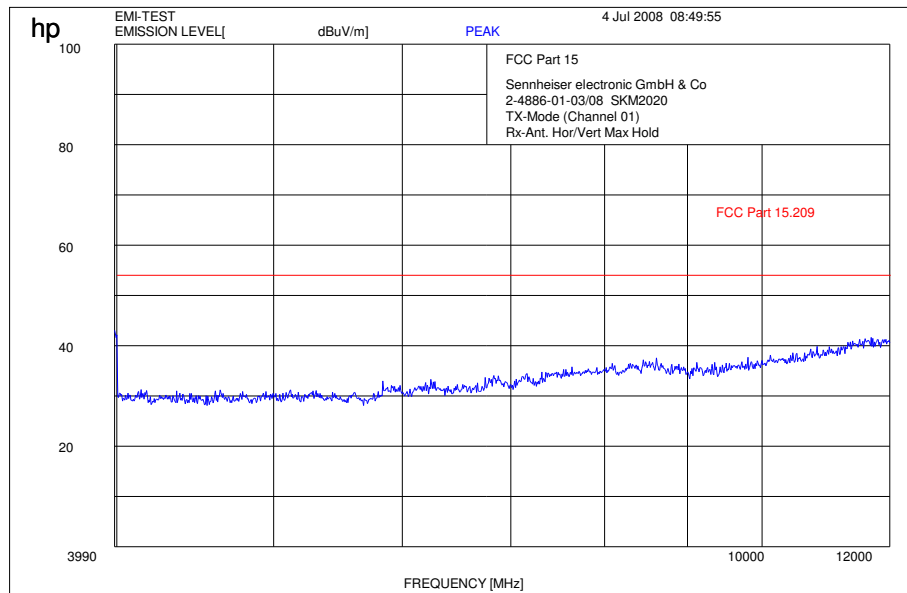
Plot 1: (Channel 1)
Tx : 30 MHz - 1 GHz



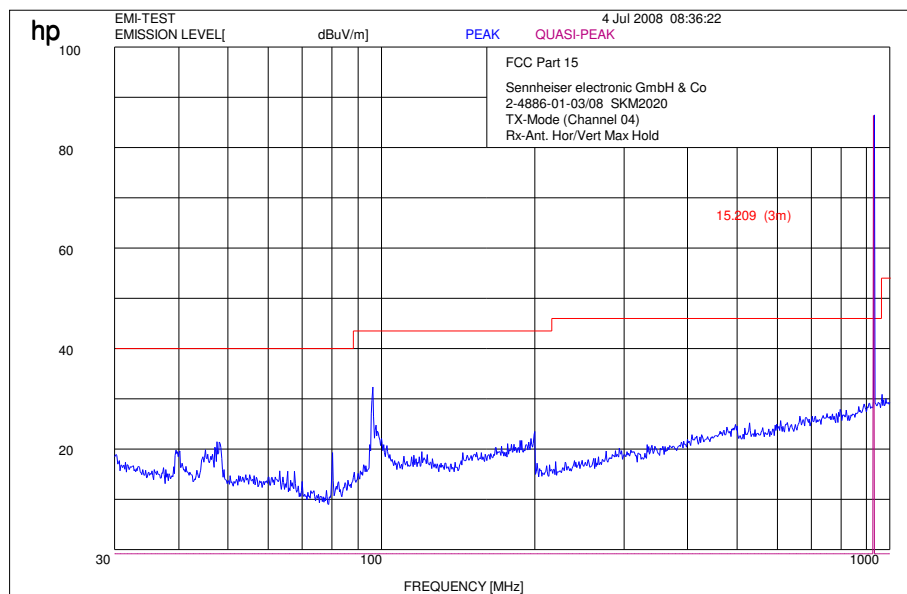
Plot 2: (Channel 1)
Tx : 1 GHz - 4 GHz



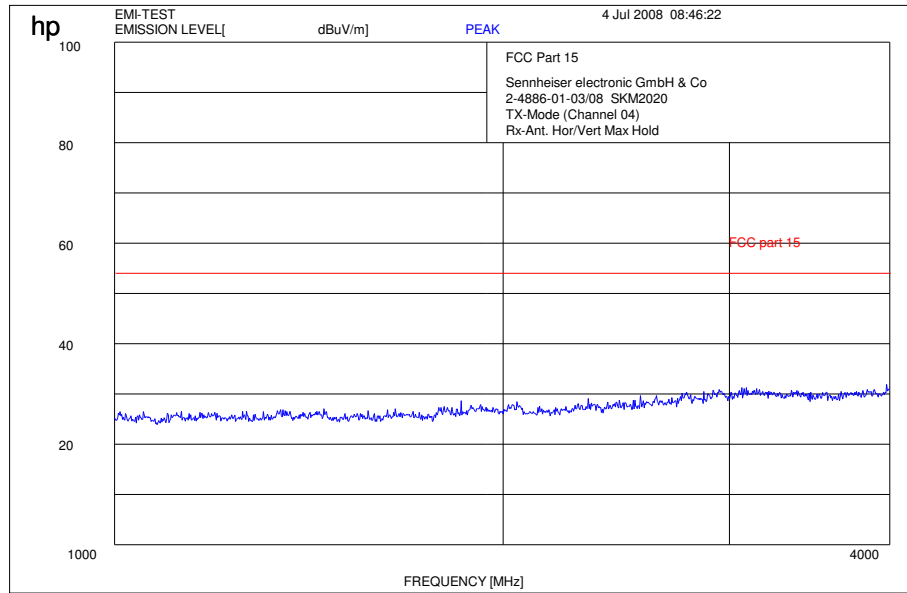
Plot 3: (Channel 1)
Tx : 4 GHz – 12 GHz



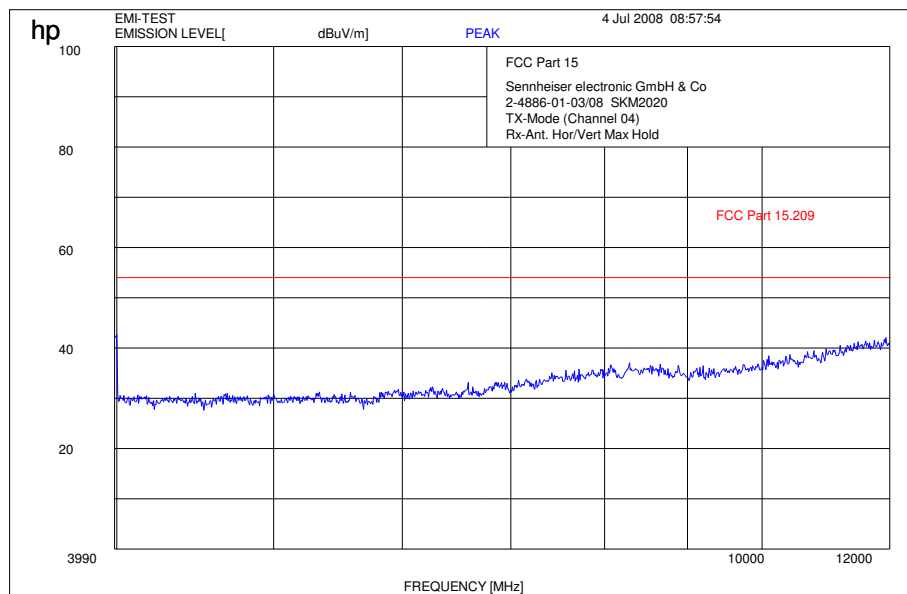
Plot 4: (Channel 4)
Tx : 30 MHz - 1 GHz



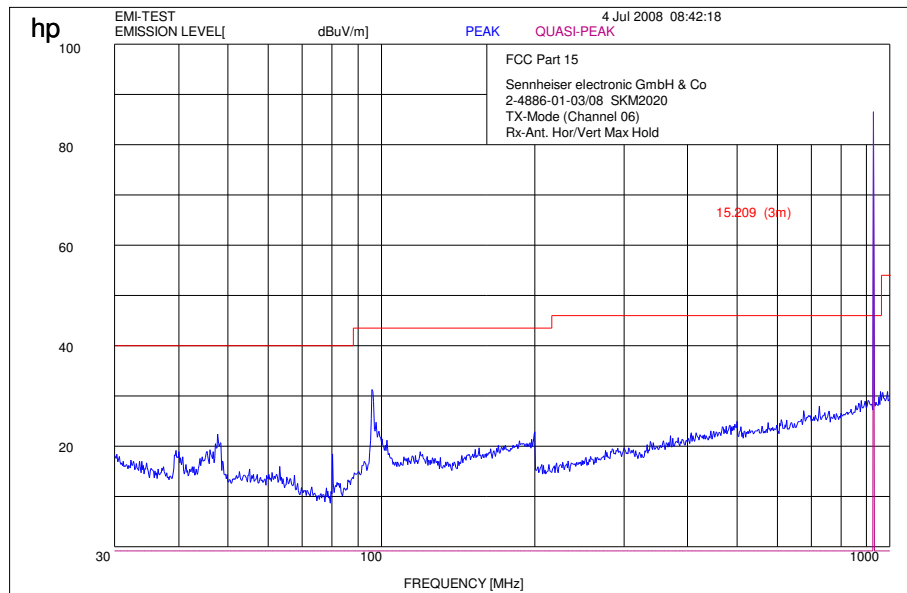
Plot 5: (Channel 4)
Tx : 1 GHz – 4 GHz



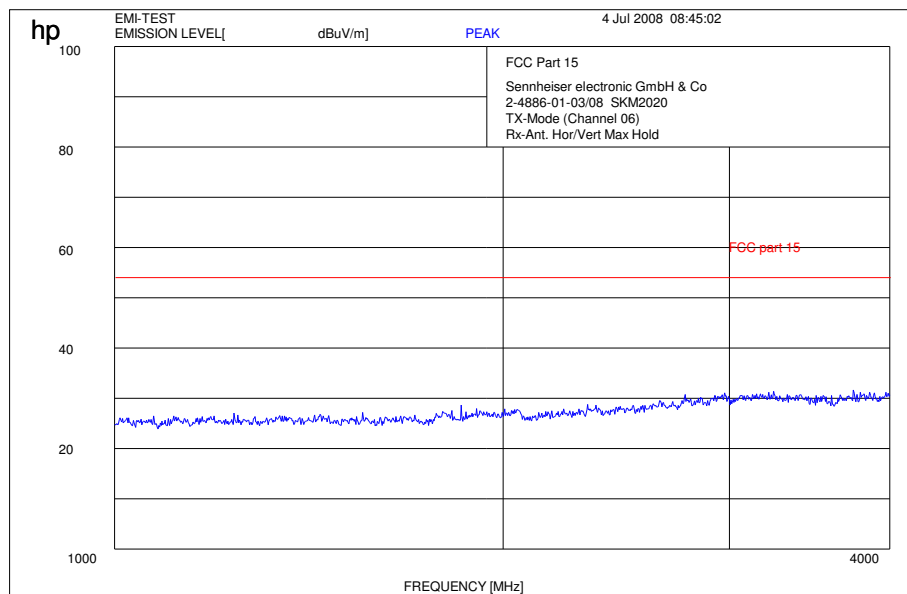
Plot 6: (Channel 4)
Tx : 4 GHz – 12 GHz



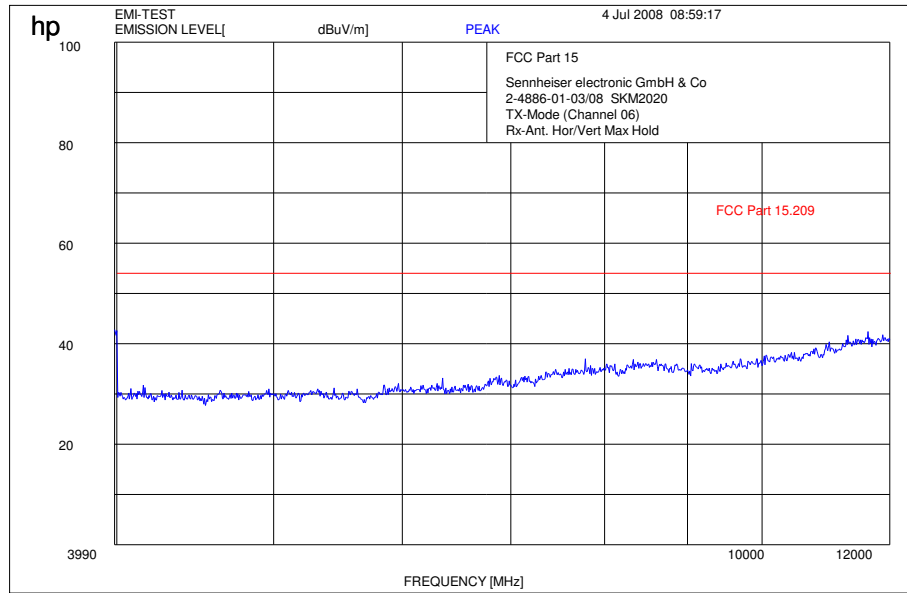
Plot 7: (Channel 6)
Tx : 30 MHz - 1 GHz



Plot 8: (Channel 6)
Tx : 1 GHz – 4 GHz



Plot 9: (Channel 6)
Tx : 4 GHz – 12 GHz



6.4 Receiver Spurious Emission (radiated)

Reference

FCC:	CFR Part SUBCLAUSE § 15.109
IC:	RSS 210, Issue 7, Section 7.3 Receiver Spurious Emissions (Radiated)

Information

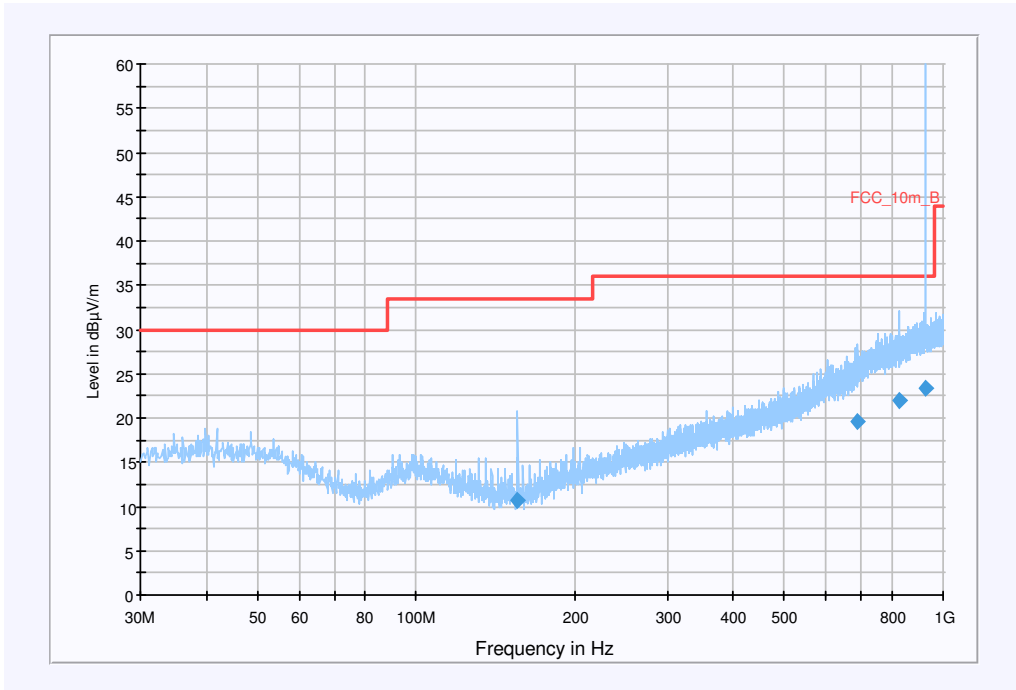
EUT: tourguide
 Serial Number: none
 Test Description: FCC @ 10 m
 Operating Conditions: standby channel 3
 Operator Name: Folz
 Comment: Powered by internal battery

Scan Setup: STAN_Fin [EMI radiated]

Hardware Setup: EMI radiated\Electric Field (NOS)
 Level Unit: dBµV/m

Subrange	Detectors	IF Bandwidth	Meas. Time	Receiver
30MHz - 1GHz	QuasiPeak	120kHz	15s	Receiver

FCC (B)



Final Measurement Detector 1

Frequency (MHz)	QuasiPeak (dBµV/m)	Meas. Time (ms)	Bandwidth (kHz)	Antenna height (cm)	Polarity	Turntable position (deg)	Corr. (dB)	Margin (dB)	Limit (dBµV/m)	Comment
155.659150	10.7	15000.000	120.000	190.0	V	233.0	9.4	22.8	33.5	
685.322350	19.7	15000.000	120.000	276.0	V	5.0	22.5	17.3	37.0	
823.746700	21.9	15000.000	120.000	279.0	V	96.0	24.9	14.6	36.5	
926.847850	23.3	15000.000	120.000	314.0	V	128.0	26.3	13.2	36.5	Used band

Hardware Setup: EMI radiated\Electric Field (NOS) - [EMI radiated]

Subrange 1

Frequency Range: 30MHz - 2GHz

Receiver: Receiver [ESCI 3]
@ GPIB0 (ADR 20), SN 100083/003, FW 3.32, CAL 07.01.2009

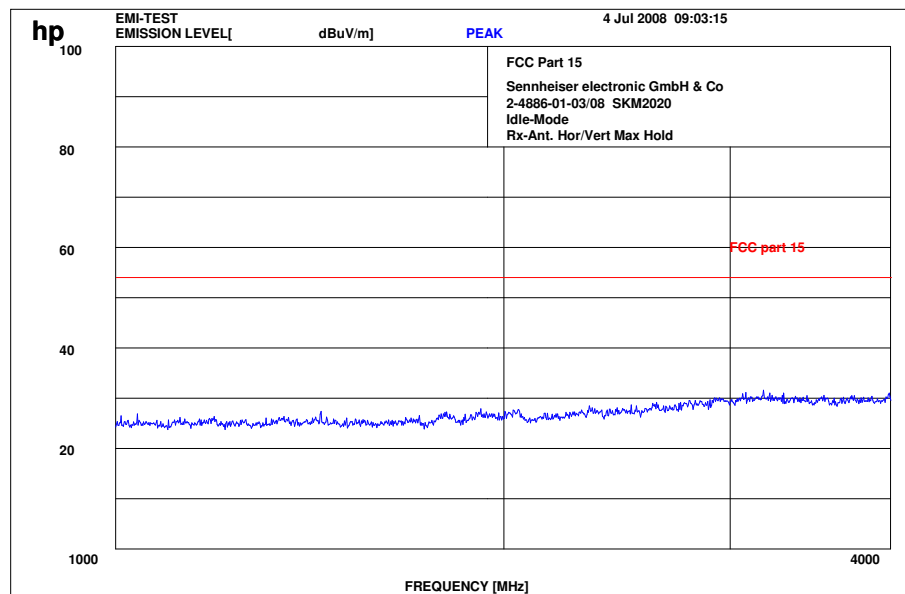
Signal Path: without Notch
FW 1.0

Antenna: VULB 9163
SN 9163-295, FW ---, CAL 08.04.2010
Correction Table (vertical): VULP6113
Correction Table (horizontal): VULP6113
Correction Table: Cabel with switch (0408)

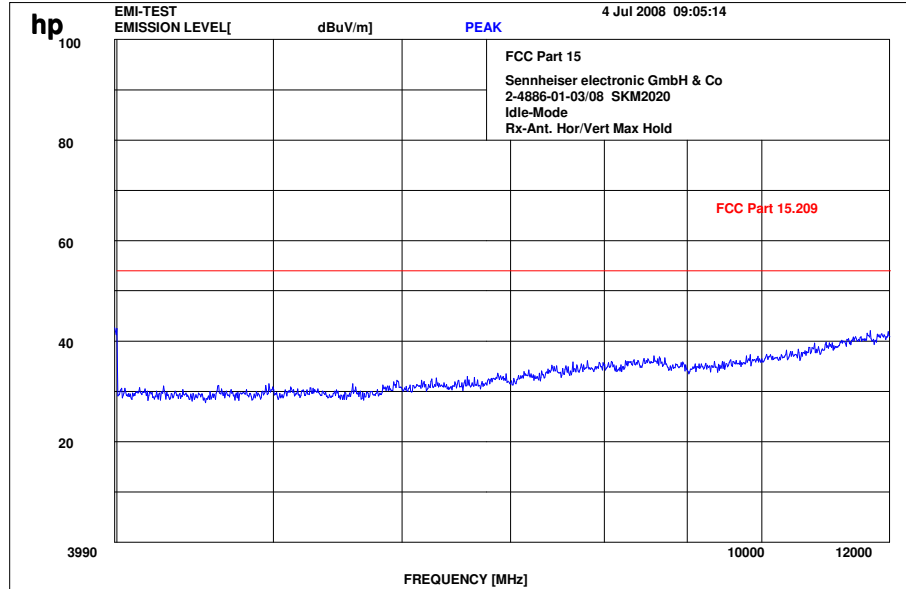
Antenna Tower: Tower [EMCO 2090 Antenna Tower]
@ GPIB0 (ADR 8), FW REV 3.12

Turntable: Turntable [EMCO Turntable]
@ GPIB0 (ADR 9)

Plot 2: 1 GHz - 4 GHz



Plot 2: 4 GHz - 12 GHz



Limits: § 15.109

Frequency (MHz)	Field strength (dB μ V/m)	Measurement distance (m)
30 - 88	30.0	10
88 - 216	33.5	10
216 - 960	36.0	10
above 960	54.0	3

6.5 Conducted Limits

Reference

FCC:	CFR Part 15.207, 15.107
IC:	RSS 210, Issue 7, Section 6.6 , 7.4

Not applicable

Limits: § 15.107 / 15.207

Frequency of Emission (MHz)	Conducted Limit (dB μ V)	
	Quasi-peak	Average
0.15 – 0.5	66 to 56 *	56 to 46 *
0.5 – 5	56	46
5 - 30	60	50

* Decreases with the logarithm of the frequency

7 Test equipment and ancillaries used for tests

To simplify the identification on each page of the test equipment used, on each page of the test report, each item of test equipment and ancillaries such as cables are identified (numbered) by the Test Laboratory, below.

Anechoic chamber C:

No	Equipment/Type	Manuf.	Serial Nr.	Inv. No. Cetecom	Last Calibration	Frequency (months)	Next Calibration
1	Anechoic chamber	MWB	87400/02	300000996	Monthly verification		
2	System-Rack 85900	HP I.V.	*	300000222	n.a.		
3	Measurement System 1						
4	Spektrum Analyzer 8566B	HP	2747A05306	300001000	05.10.2006	24	05.10.2008
5	Spektrum Analyzer Display 85662A	HP	2816A16541	300002297	05.10.2006	24	05.10.2008
6	Quasi-Peak-Adapter 85650A	HP	2811A01131	300000999	05.10.2006	24	05.10.2008
7	RF-Preselector 85685A	HP	2837A00779	300000218	08.11.2006	24	08.11.2008
8	PC Vectra VL	HP		300001688	n.a.		
9	Software EMI	HP		300000983	n.a.		
10	Measurement System 2						
11	FSP 30	R&S	100623	ICT 300003464	05.10.2007	24	15.10.2009
12	PC	F+W			n.a.		
13	TILE	TILE			n.a.		
14	Biconical antenna	EMCO	S/N: 860 942/003		Monthly verification (System cal.)		
15	Log. Period. Antenna 3146	EMCO	2130	300001603	Monthly verification (System cal.)		
16	Double Ridged Antenna HP 3115P	EMCO	3088	300001032	Monthly verification (System cal.)		
17	Active Loop Antenna 6502	EMCO	2210	300001015	Monthly verification (System cal.)		
18	Power Supply 6032A	HP	2818A03450	300001040	12.05.2007	36	12.05.2010
19	Busisolator	Kontron		300001056	n.a.		
20	Leitungsteiler 11850C	HP		300000997	Monthly verification (System cal.)		
21	Power attenuator 8325	Byrd	1530	300001595	Monthly verification (System cal.)		
22	Band reject filter WRCG1855/1910	Wainwright	7	300003350	Monthly verification (System cal.)		
23	Band reject filter WRCG2400/2483	Wainwright	11	300003351	Monthly verification (System cal.)		

System Rack Room 005 :

No	Equipment/Type	Manuf.	Serial Nr.	Inv. No. Cetecom	Last Calibration	Frequency (months)	Next Calibration
1	FSP 30	R&S		300003575	02.04.2007	24	02.04.2009
2	CBT	R&S	100313	300003516	24.10.2006	24	24.10.2008
3	Switch Matrix	HP		300000929	n.a.		
4	Power Supply	HP	3041A00544	300002270	13.05.2007	36	13.05.2010
5	Signal Generator	R&S	836206/0092	300002680	30.05.2007	36	30.05.2010

Climatic Box:

No	Equipment/Type	Manuf.	Serial Nr.	Inv. No. Cetecom	Last Calibration	Frequency (months)	Next Calibration
1	Climatic box VT 4002	Heraeus Vötsch	58566046820010	300003019	11.05.2007	24	11.05.2009
2	Climatic box CTS T-40/50	CTS	064023	300003540	03.01.2007	24	03.01.2009

SRD Laboratory Room 002:

No	Equipment/Type	Manuf.	Serial Nr.	Inv. No. Cetecom	Last Calibration	Frequency (months)	Next Calibration
1	System Controller PSM 12	R&S	835259/007	3000002681-00xx	n.a.		
2	Memory Extension PSM-K10	R&S	To 1	3000002681	n.a.		
3	Operating Software PSM-B2	R&S	To 1	3000002681	n.a.		
4	19" Monitor		22759020-ED	3000002681	n.a.		
5	Mouse		LZE 0095/6639	3000002681	n.a.		
6	Keyboard		G00013834L461	3000002681	n.a.		
7	Spectrum Analyser FSIQ 26	R&S	835540/018	3000002681-0005	01.08.2006	24	01.08.2008
8	Tracking Generator FSIQ-B10	R&S	835107/015	3000002681	s.No.7		
10	RF-Generator SMIQ03 (B1 Signal)	R&S	835541/056	3000002681-0002	01.08.2006	36	01.08.2009
11	Modulation Coder SMIQ-B20	R&S	To 10	3000002681	s.No.10		
12	Data Generator SMIQ-B11	R&S	To 10	3000002681	s.No.10		
13	RF Rear Connection SMIQ-B19	R&S	To 10	3000002681	s.No.10		
14	Fast CPU SM-B50	R&S	To 10	3000002681	s.No.10		
15	FM Modulator SM-B5	R&S	835676/033	3000002681	s.No.10		
16	RF-Generator SMIQ03 (B2 Signal)	R&S	835541/055	3000002681-0001	01.08.2006	36	01.08.2009
17	Modulation Coder SMIQ-B20	R&S	To 16	3000002681	s.No.16		
18	Data Generator SMIQ-B11	R&S	To 16	3000002681	s.No.16		
19	RF Rear Connection SMIQ-B19	R&S	To 16	3000002681	s.No.16		
20	Fast CPU SM-B50	R&S	To 16	3000002681	s.No.16		
21	FM Modulator SM-B5	R&S	836061/022	3000002681	s.No.16		
22	RF-Generator SMP03 (B3 Signal)	R&S	835133/011	3000002681-0003	01.08.2006	36	01.08.2009
23	Attenuator SMP-B15	R&S	835136/014	3000002681	S.No.22		
24	RF Rear Connection SMP-B19	R&S	834745/007	3000002681	S.No.22		
25	Power Meter NRVD	R&S	835430/044	3000002681-0004	01.08.2006	24	01.08.2008
26	Power Sensor NRVD-Z1	R&S	833894/012	3000002681-0013	01.08.2006	24	01.08.2008
27	Power Sensor NRVD-Z1	R&S	833894/011	3000002681-0010	01.08.2006	24	01.08.2008
28	Rubidium Standard RUB	R&S		3000002681-0009	01.08.2006	24	01.08.2008
29	Switching and Signal Conditioning Unit SSCU	R&S	338864/003	3000002681-0006	01.08.2006	24	01.08.2008
30	Laser Printer HP Deskjet 2100	HP	N/A	3000002681-0011	n.a.		
31	19" Rack	R&S	11138363000004	3000002681	n.a.		
32	RF-cable set	R&S	N/A	3000002681	n.a.		
33	IEEE-cables	R&S	N/A	3000002681	n.a.		
34	Sampling System FSIQ-B70	R&S	835355/009	3000002681	s.No.7		
35	RSP programmable attenuator	R&S	834500/010	3000002681-0007	01.08.2006	24	01.08.2008
36	Signalling Unit	R&S	838312/011	3000002681	n.a.		

37	NGPE programmable Power Supply for EUT	R&S	192.033.41	3000002681			
39	Power Splitter 6005-3	Inmet Corp.	none	300002841	23.12.2006	24	23.12.2008
40	SMA Cables SPS-1151-985-SPS	Insulated Wire	different	different	n.a.		
41	CBT32 with EDR Signaling Unit	R&S					
42	Coupling unit	Narda	N/A	--	n.a.		
43	2xSwitch Matrix PSU	R&S	872584/021	300001329	n.a.		
44	RF-cable set	R&S	N/A	different	n.a.		
45	IEEE-cables	R&S	N/A	--	n.a.		

Note: 3000002681-00xx inventoried as a system

SRD Laboratory Room 005:

No	Equipment/Type	Manuf.	Serial Nr.	Inv. No. Cetecom	Last Calibration	Frequency (months)	Next Calibration
1	Spektrum Analyzer 8566B	HP	2747A05275	300000219	08.11.2006	24	08.11.2008
2	Spektrum Analyzer Display 85662A	HP	2816A16497	300001690	08.11.2006	24	08.11.2008
3	Quasi-Peak-Adapter 85650A	HP	2811A01135	300000216	08.11.2006	24	08.11.2008
4	Power Supply	Heiden	003202	300001187	12.05.2007	36	12.05.2010
5	Power Supply	Heiden	1701	300001392	12.05.2007	36	12.05.2010

SRD Laboratory Room 011:

No	Equipment/Type	Manuf.	Serial Nr.	Inv. No. Cetecom	Last Calibration	Frequency (months)	Next Calibration
1	NRP Power Meter	R&S	100212	300003780	27.02.2008	24	27.02.2010

Anechoic chamber F:

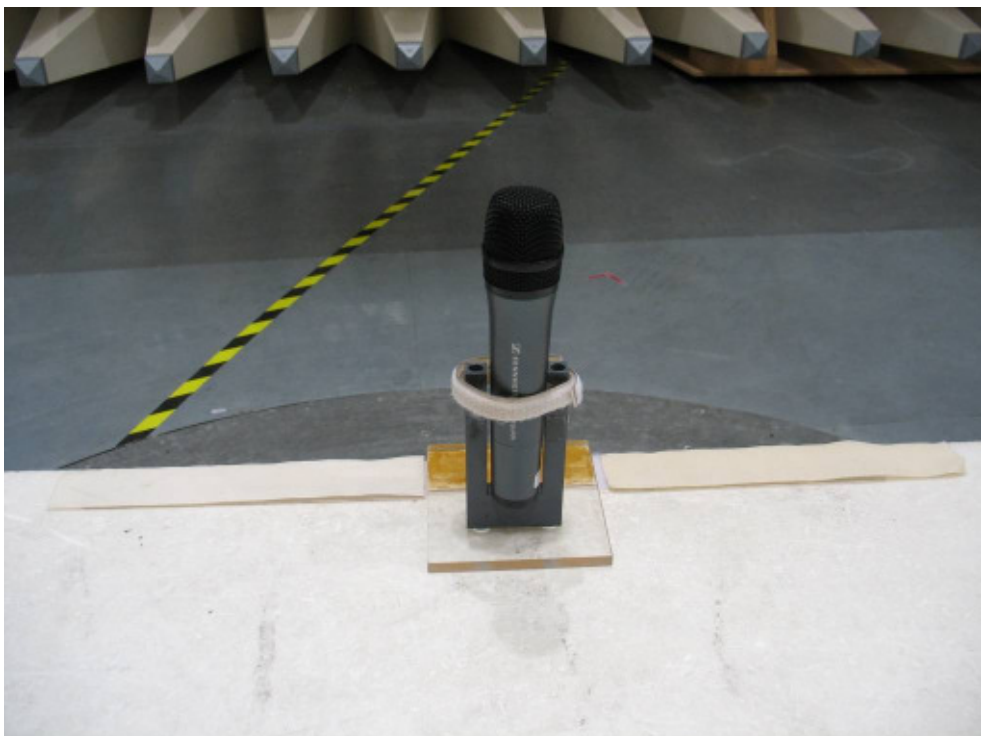
No	Equipment/Type	Manuf.	Serial Nr.	Inv. No. Cetecom	Last Calibration	Frequency (months)	Next Calibration
1	Control Computer	F+W	FW0502032	300003303	-/-	-/-	-/-
2	Trilog Antenna	9163-295	-/-	-/-	30.04.2008	24	30.04.2010
3	Amplifier - 0518C-138	Veritech Micro-wave Inc.	-/-	-/-	-/-	-/-	-/-
4	Switch - 3488A	HP		300000368	-/-	-/-	-/-
5	EMI Test receiver - ESCI	R&S	100083	300003312	31.01.2009	24	31.01.2009
6	Turntable Controller - 1061 3M	EMCO	1218	300000661	-/-	-/-	-/-
7	Tower Controller 1051 Controller	EMCO	1262	300000625	-/-	-/-	-/-
8	Tower - 1051	EMCO	1262	300000625	-/-	-/-	-/-
10	Ultra Notch-Filter Rejected band Ch. 62	WRCD	9	-/-	-/-	-/-	-/-

8 Photographs of the Test Set-up

Photo 1: (radiated)



Photo 2: (radiated)



9 Photographs of the EUT

Photo 3:



Photo 4:



Photo 5:



Photo 6:



Photo 7:



Photo 8:



Photo 9:

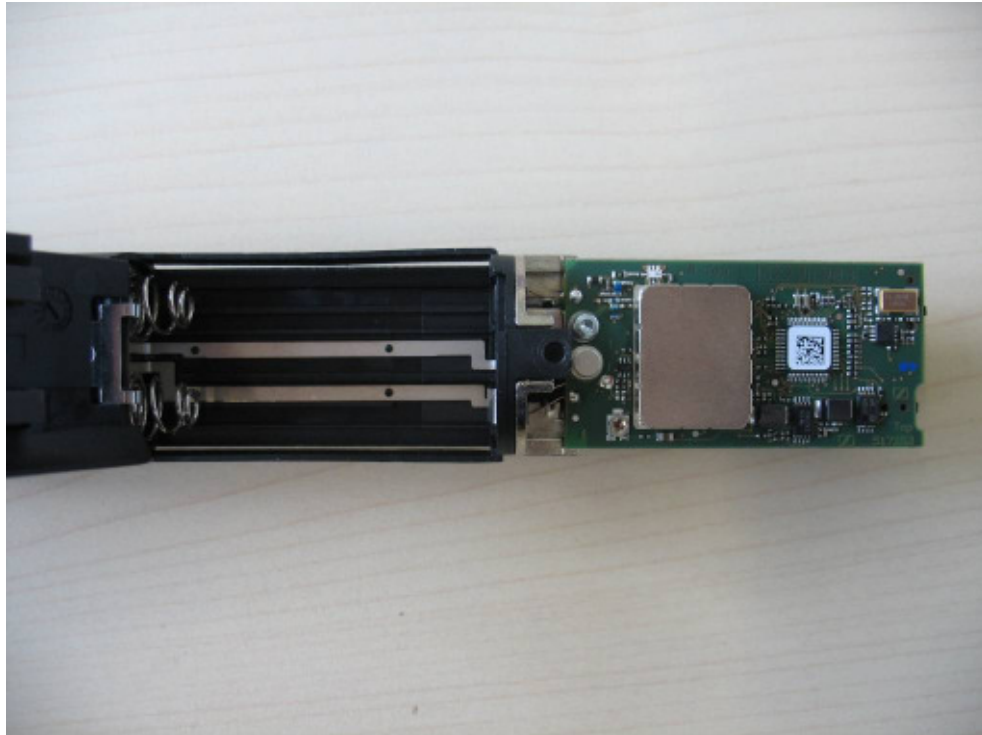


Photo 10:

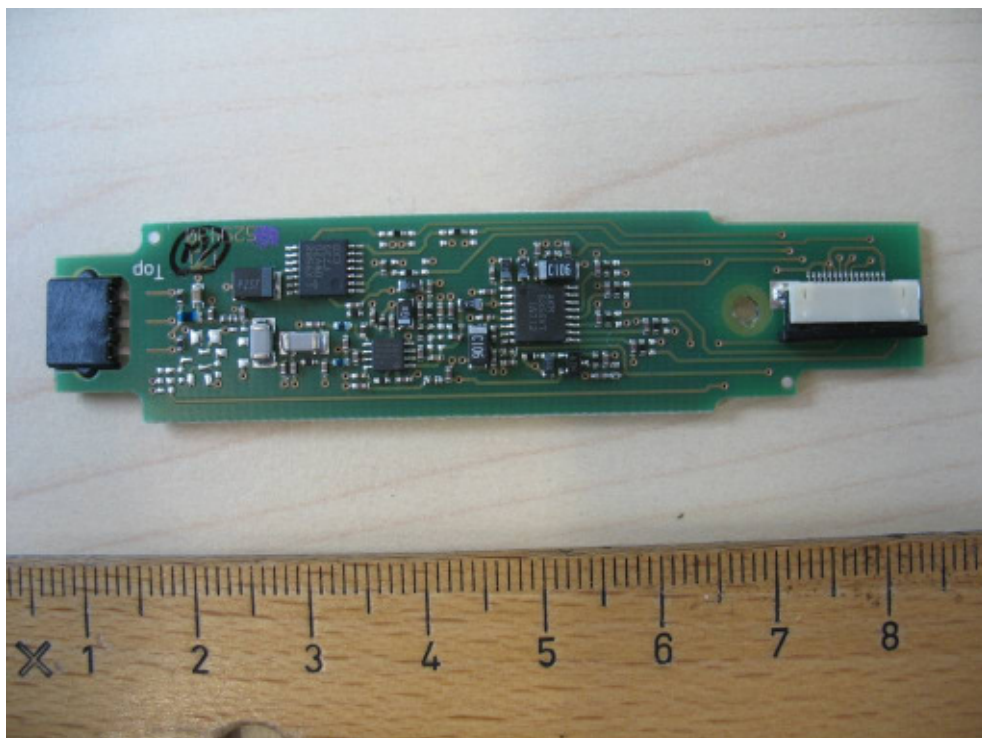


Photo 11:

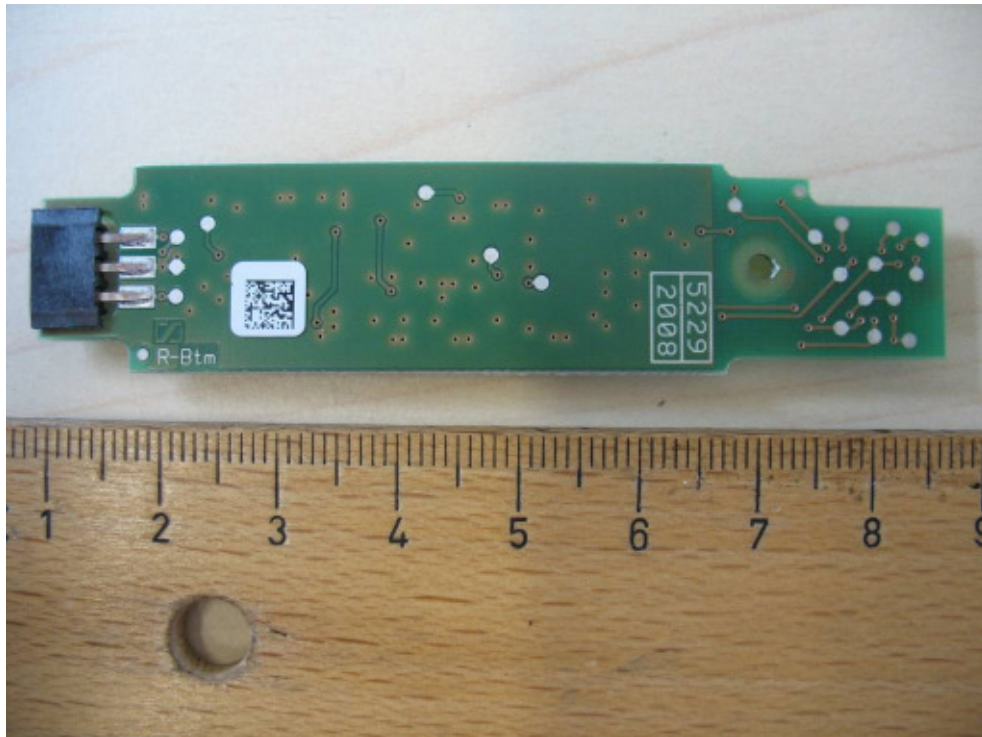


Photo 12:

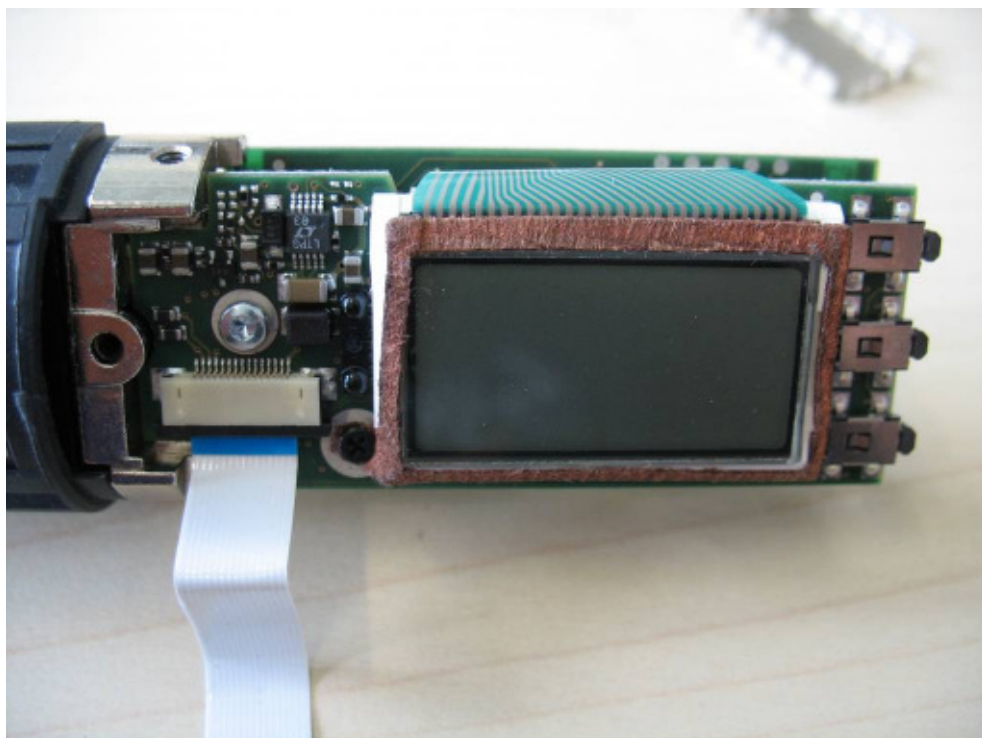


Photo 13:

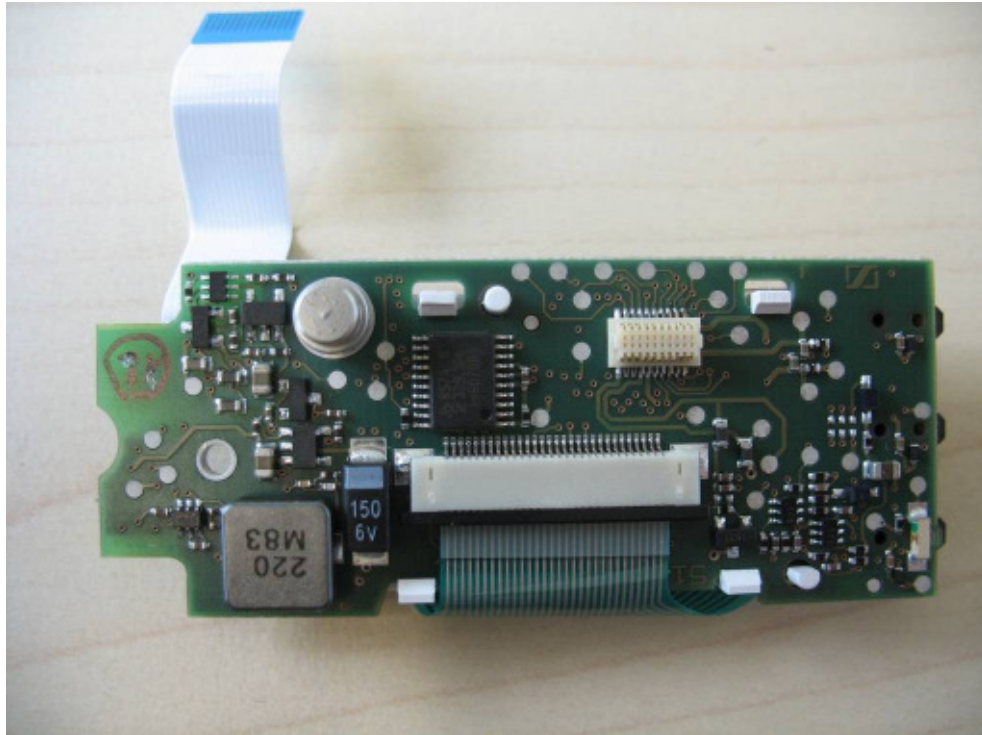


Photo 14:

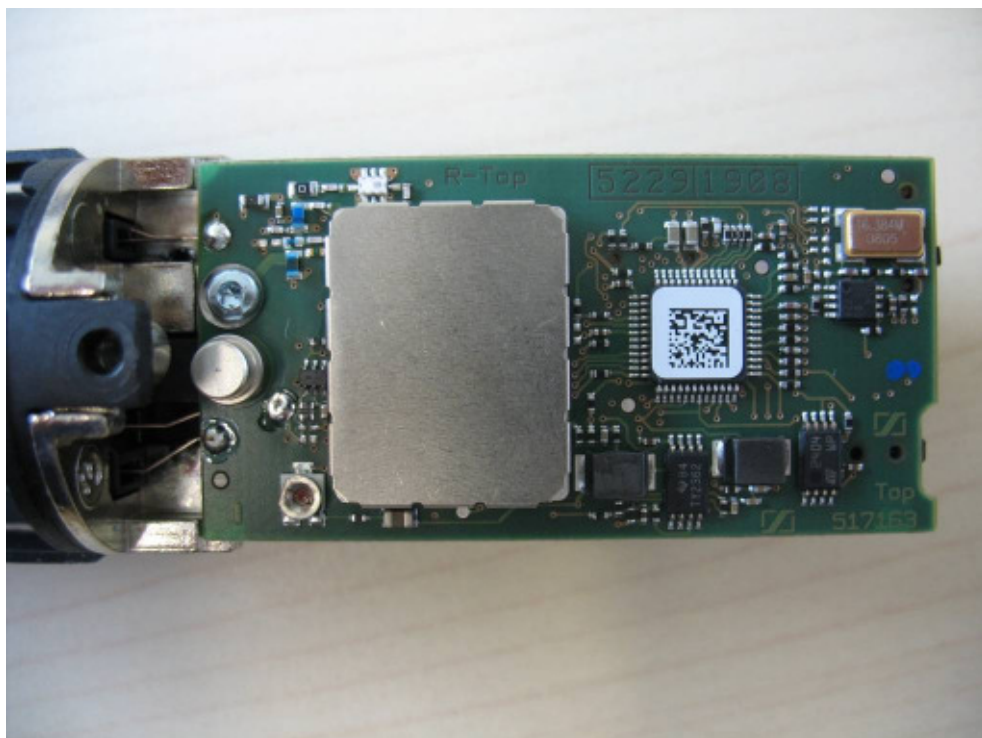


Photo 15:

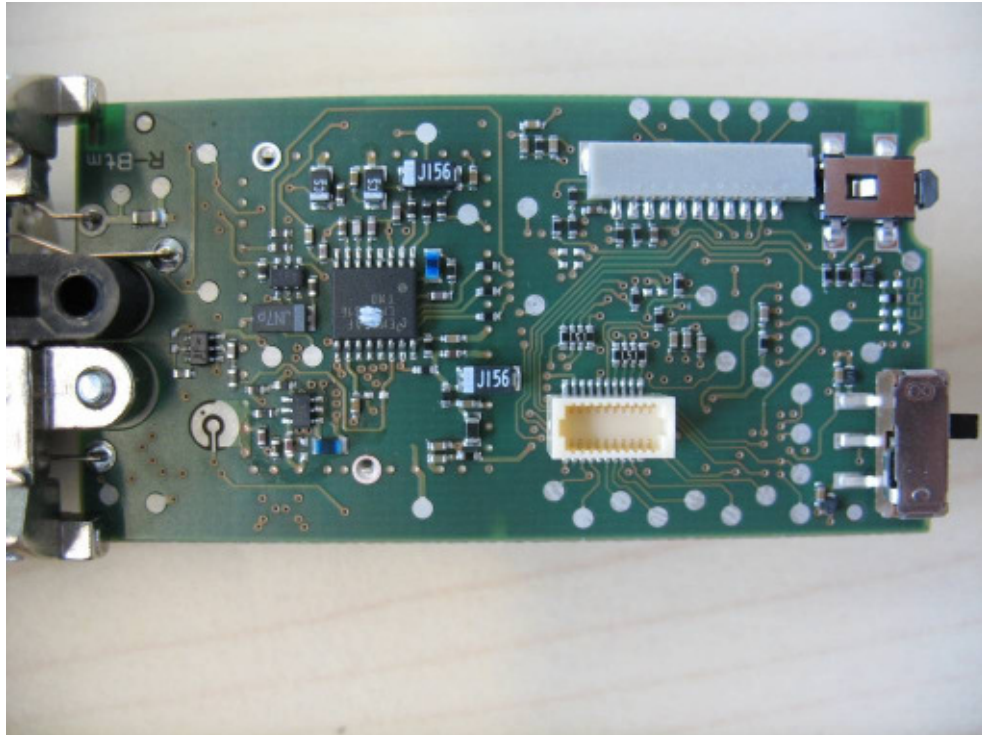


Photo 16:

