

# Contents

Important safety instructions .....	2
The SKM 2000 radio microphone .....	3
Areas of application .....	3
The frequency bank system .....	4
Delivery includes .....	5
Product overview .....	6
Overview of the SKM 2000 radio microphone .....	6
Overview of the displays .....	7
Putting the radio microphone into operation .....	8
Inserting the batteries/accupack .....	8
Charging the accupack .....	9
Changing the microphone head .....	10
Changing the color-coded protection ring .....	11
Using the radio microphone .....	12
Switching the radio microphone on/off .....	12
Deactivating the lock mode temporarily .....	13
Deactivating the RF signal .....	14
Selecting a standard display .....	14
Using the operating menu .....	15
The buttons .....	15
Overview of the operating menu .....	15
Working with the operating menu .....	17
Synchronizing the radio microphone with a receiver .....	19
Cleaning the radio microphone .....	20
If a problem occurs ... ..	21
Specifications .....	22
Manufacturer Declarations .....	24



For more detailed information on the individual sections of this instruction manual, visit the corresponding product page on our website at [www.sennheiser.com](http://www.sennheiser.com).

## Important safety instructions

- Read this instruction manual.
- Keep this instruction manual. Always include this instruction manual when passing the device on to third parties.
- Heed all warnings and follow all instructions.
- Clean the device only with a slightly damp cloth.
- Do not place the device near any heat sources such as radiators, stoves, or other devices (including amplifiers) that produce heat.
- Only use attachments/accessories specified by Sennheiser.
- When replacement parts are required, only use replacement parts specified by Sennheiser or those having the same characteristics as the original part. Unauthorized substitutions may result in fire, electric shock, or other hazards.
- Refer all servicing to qualified service personnel.  
Servicing is required if the device has been damaged in any way, liquid has been spilled, objects have fallen inside, the device has been exposed to rain or moisture, does not operate properly or has been dropped.
- **WARNING:** To reduce the risk of short circuits, do not use the device near water and do not expose it to rain or moisture.

### Intended use

Intended use of the SKM 2000 radio microphone includes:

- having read these instructions especially the chapter “Important safety instructions”,
- using the device within the operating conditions and limitations described in this instruction manual.

“Improper use” means using the device other than as described in these instructions, or under operating conditions which differ from those described herein.

# The SKM 2000 radio microphone

This radio microphone is part of the 2000 series. With this series, Sennheiser offers high-quality state-of-the-art RF transmission systems with a high level of operational reliability and ease of use. Transmitters and receivers permit wireless transmission with studio-quality sound.

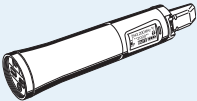
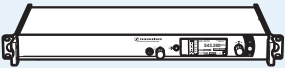

Features of the 2000 series:

- Optimized PLL synthesizer and microprocessor technology
- HDX noise reduction system
- Pilot tone squelch control
- True diversity technology
- Switching bandwidth of up to 75 MHz
- Increased immunity to intermodulation and interferences in multi-channel operation

## Areas of application

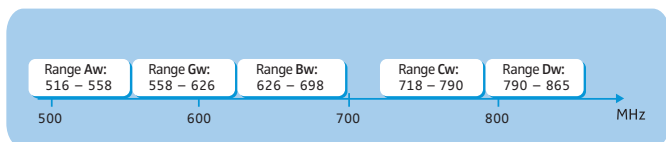
The radio microphone can be combined with the EM 2000 or EM 2050 rack-mount receiver. The receivers are available in the same UHF frequency ranges and are equipped with the same frequency bank system with factory-preset frequencies. An advantage of the factory-preset frequencies is that

- a transmission system is ready for immediate use after switch-on,
- several transmission systems can be operated simultaneously on the preset frequencies without causing intermodulation interference.

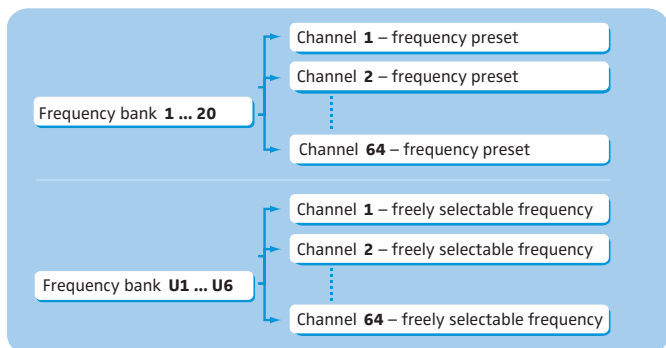
Radio microphone	Interchangeable microphone heads	Receivers
 BK (black) NI (nickel)	MMD 835-1	EM 2000 receiver
	MMD 845-1	
	MME 865-1	
	MMD 935-1	EM 2050 twin receiver
	MMD 945-1	
	MMK 965-1	

## The frequency bank system

The radio microphone is available in 6 UHF frequency ranges with up to 3,000 transmission frequencies per frequency range:



Each frequency range (Aw–Dw, Gw) offers 26 frequency banks with up to 64 channels each:



Each of the channels in the frequency banks "1" to "20" has been factory-preset to a fixed transmission frequency (frequency preset). The factory-preset frequencies within one frequency bank are intermodulation-free. These frequencies cannot be changed.

For an overview of the frequency presets, please refer to the supplied frequency information sheet. Updated versions of the frequency information sheet can be downloaded from the corresponding product page on our website at [www.sennheiser.com](http://www.sennheiser.com).

The frequency banks "U1" to "U6" allow you to freely select and store transmission frequencies. It might be that these transmission frequencies are **not** intermodulation-free.

## Delivery includes

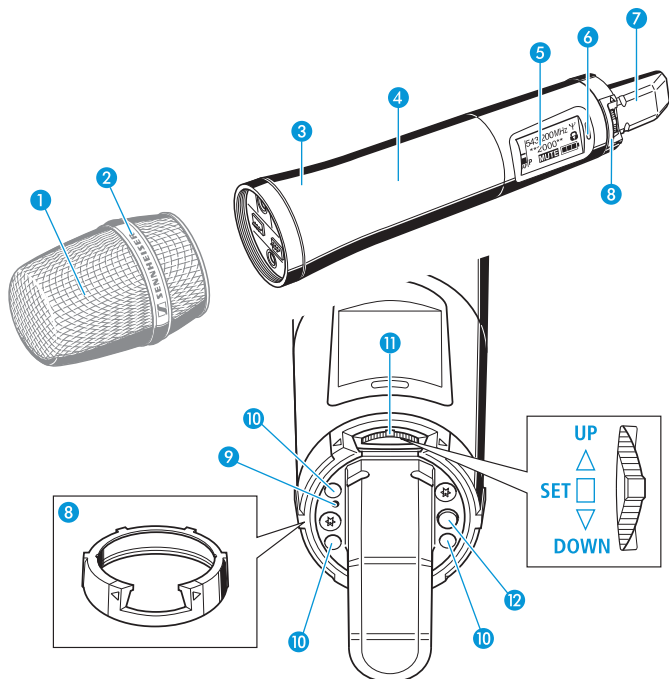
The packaging contains the following items:

- 1 SKM 2000 radio microphone
- 2 AA size batteries, 1.5 V
- 1 microphone clamp
- 8 color-coded identification rings
- 1 pouch
- 1 instruction manual
- 1 frequency information sheet
- 1 RF power information sheet

You additionally require 1 microphone head.

## Product overview

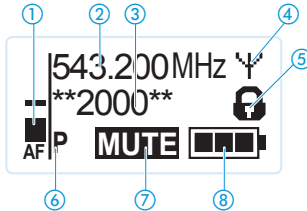
### Overview of the SKM 2000 radio microphone







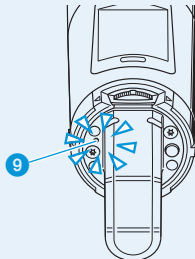
- 1 Microphone head (interchangeable)
- 2 Name and pick-up pattern of the microphone head
- 3 Body of radio microphone
- 4 Battery compartment (not visible from outside)
- 5 Display panel, backlit in orange
- 6 Infra-red interface
- 7 Antenna
- 8 Color-coded protection ring; (available in different colors)
- 9 Operation and battery status indicator, red LED:  
lit = ON  
flashing = LOW BATT
- 10 Charging contacts
- 11 Multi-function switch:  
▲ (UP)  
▼ (DOWN)  
■ (SET)
- 12 ON/OFF button (serves as the ESC (cancel) key in the operating menu)

## Overview of the displays

After switch-on, the radio microphone displays the standard display "Frequency/Name". For further illustrations and examples of the different standard displays, refer to page 14. The display backlighting is automatically reduced after approx. 20 seconds.



Display	Meaning
① Audio level "AF"	Modulation of the radio microphone with peak hold function
② Frequency	Current transmission frequency
③ Name	User selectable name
④ Transmission icon	RF signal is being transmitted
⑤ Lock mode icon	Lock mode is activated
⑥ "P" (Pilot)	Pilot tone transmission is activated
⑦ "MUTE"	Audio signal is muted
⑧ Battery status	Charge status:
	 approx. 100%
	 approx. 70%
	 approx. 30%
	 charge status is critical, the red <b>LOW BATT LED</b> ⑨ is flashing:

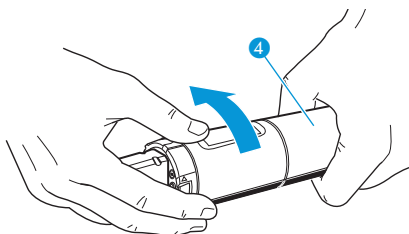


## Putting the radio microphone into operation

### Inserting the batteries/accupack

For powering the radio microphone, you can either use two 1.5 V AA size batteries or the rechargeable Sennheiser BA 2015 accupack.

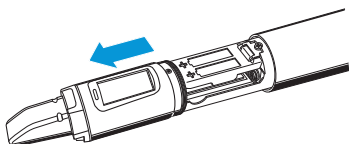
- ▶ Unscrew the lower part of the radio microphone from the radio microphone's body ④ by turning it counterclockwise.



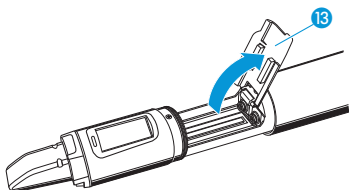
When unscrewing the radio microphone during operation, the muting function is automatically activated. "MUTE" appears on the display panel.

When screwing the lower part of the radio microphone back to the radio microphone's body, the muting is canceled.

- ▶ Slide back the lower part of the radio microphone as far as it will go.

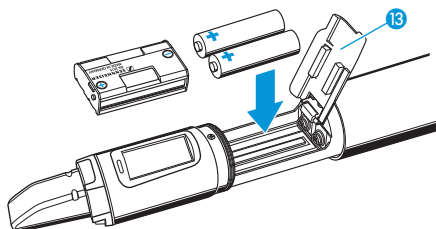


- ▶ Open the battery compartment cover ⑬.





- ▶ Insert the batteries or the BA 2015 accupack as shown on the battery compartment cover. Observe correct polarity when inserting the batteries/accupack.

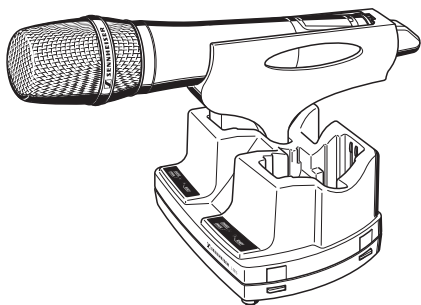


- ▶ Close the battery compartment cover 13.
- ▶ Push the battery compartment into the radio microphone's body.
- ▶ Screw the lower part of the radio microphone back to the radio microphone's body 4.

## Charging the accupack

To charge the BA 2015 accupack (optional accessory) in the radio microphone:

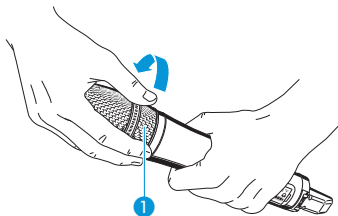
- ▶ Use the LA 2 charging adapter to insert the radio microphone into the L 2015 charger (both the charger and the charging adapter are available as optional accessories – information on accessories can be found on our web site at [www.sennheiser.com](http://www.sennheiser.com)).



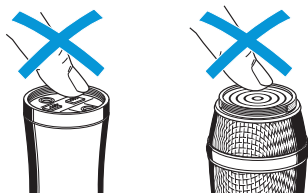
The LA 2 charging adapter and L 2015 charger can only charge the radio microphone with the BA 2015 accupack installed. Standard batteries (primary cells) or individual rechargeable battery cells cannot be charged in this way.

## Changing the microphone head

- ▶ Unscrew the microphone head ①.



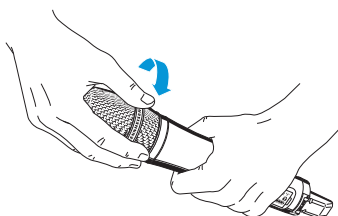
Do not touch the contacts of the radio microphone nor the contacts of the microphone head ①. The contacts can become dirty or damaged if touched.



When unscrewing the microphone head ① during operation, the muting function is automatically activated. "MUTE" appears on the display panel.

When screwing the microphone head back to the radio microphone, the muting is canceled.

- ▶ Screw the desired microphone head to the radio microphone.

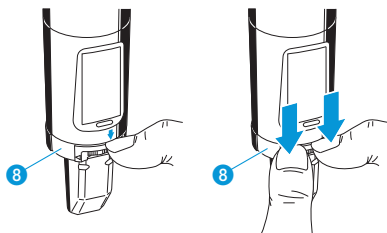


The radio microphone is operational again.

## Changing the color-coded protection ring

The color-coded protection ring 8 prevents the multi-function switch 11 from accidental operation. Protection rings 8 in different colors are available as accessories. The protection rings allow you to clearly identify each radio microphone.

- ▶ Remove the color-coded protection ring 8 as shown.



- ▶ Put on a new protection ring 8 as shown.

