

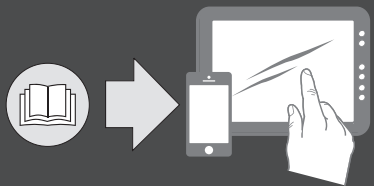


ew 300-500 G4

Quick Guide
Kurzanleitung
Guide rapide
Guía rápida
Guia de inicio rápido
Guia rápida
Beknopte handleiding
Krótka instrukcja obsługi
Snabbguide

Kort vejledning
Pikaohje
Γρήγορος οδηγός
Kısa Kılavuz
Краткая инструкция
快速指南
快速使用指南
クイックガイド
퀵 가이드

SENNHEISER



Sennheiser Documentation App



or online at
www.sennheiser.com/download
ew 300-500 G4_

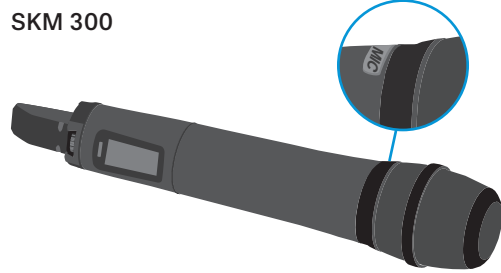
Sennheiser electronic GmbH & Co. KG
Am Labor 1, 30900 Wedemark, Germany
www.sennheiser.com
Printed in Germany, Publ. 01/18, 575861/A01

EM 300-500

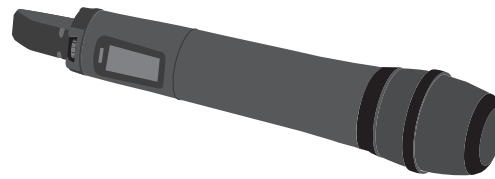


SKM 300 | SKM 500

SKM 300



SKM 500



SK 300 | SK 500

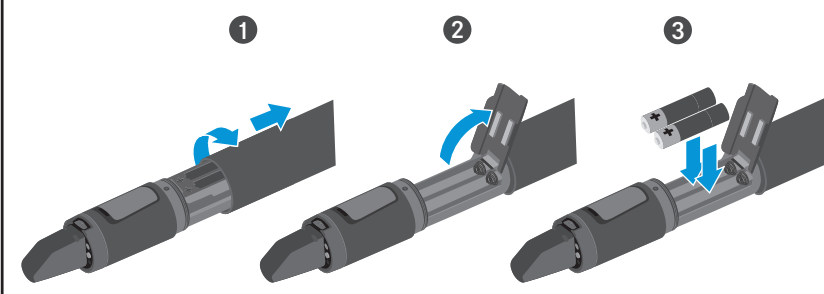
SK 300



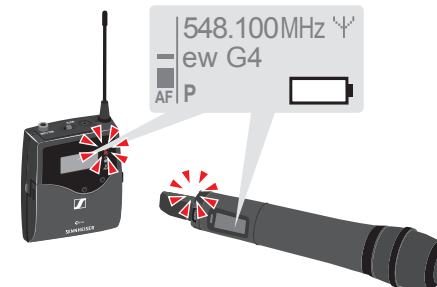
SK 500



Battery



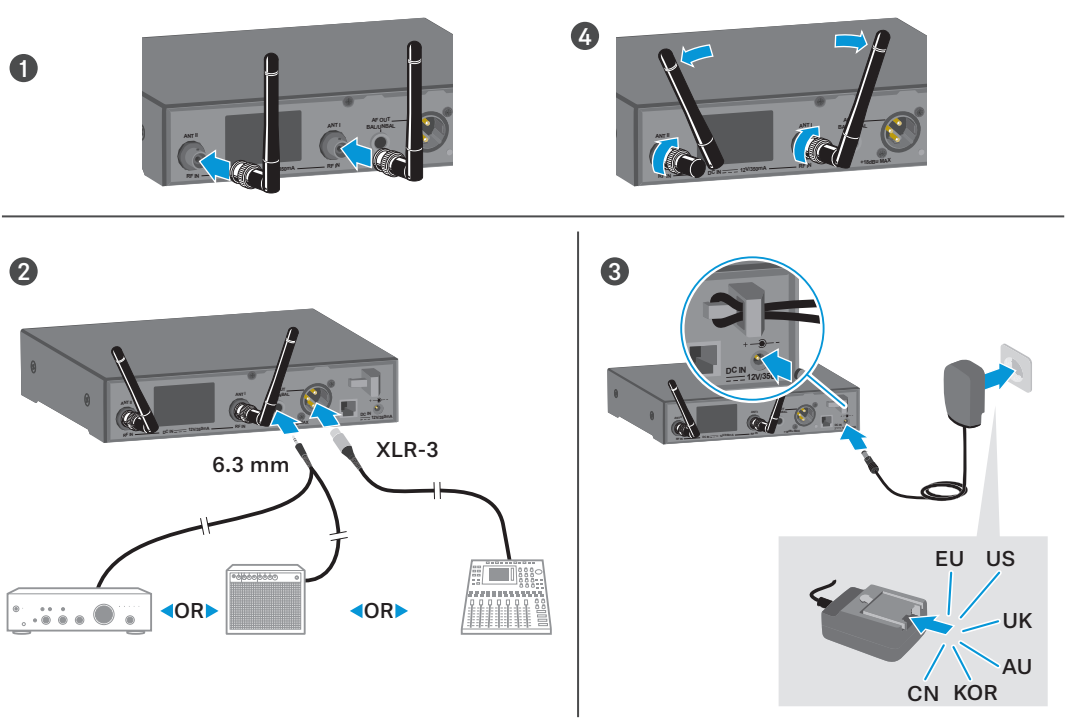
Low Battery



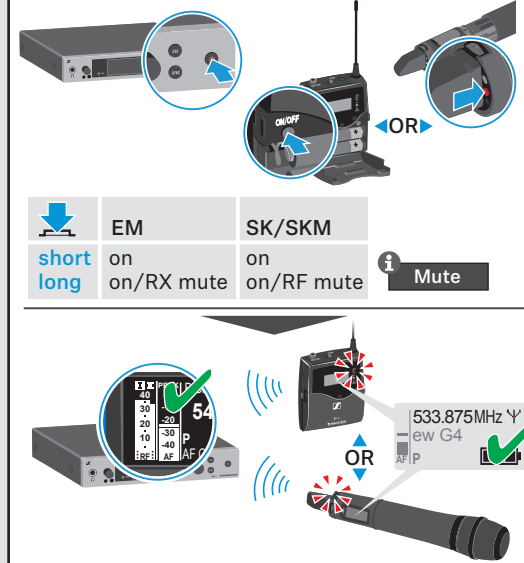
	100 %	> 8 h
	70 %	4 - 6 h
	30 %	2 - 3 h

LOW BATT

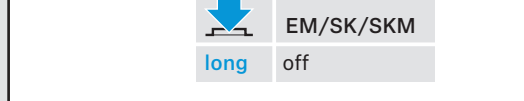
Setup



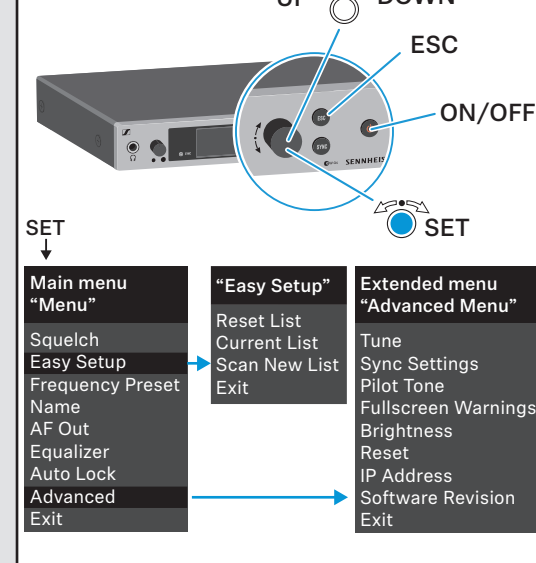
On



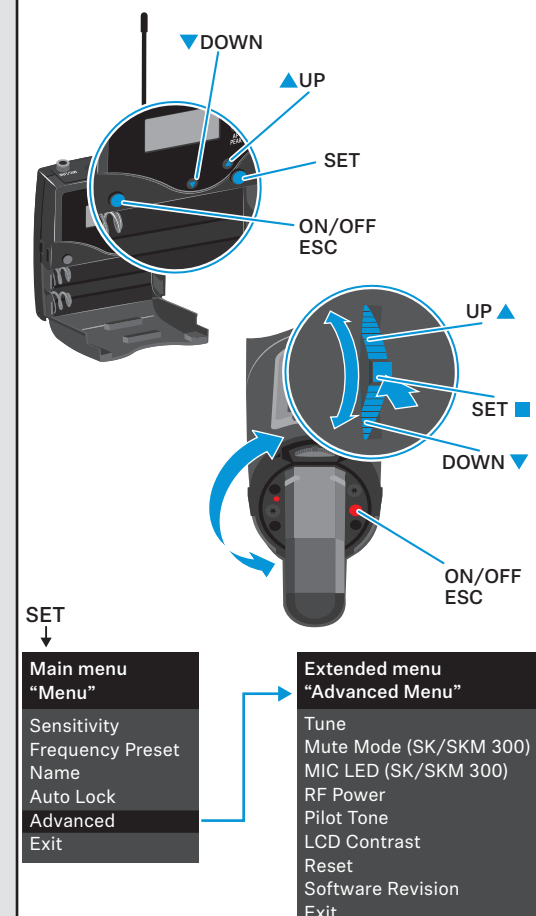
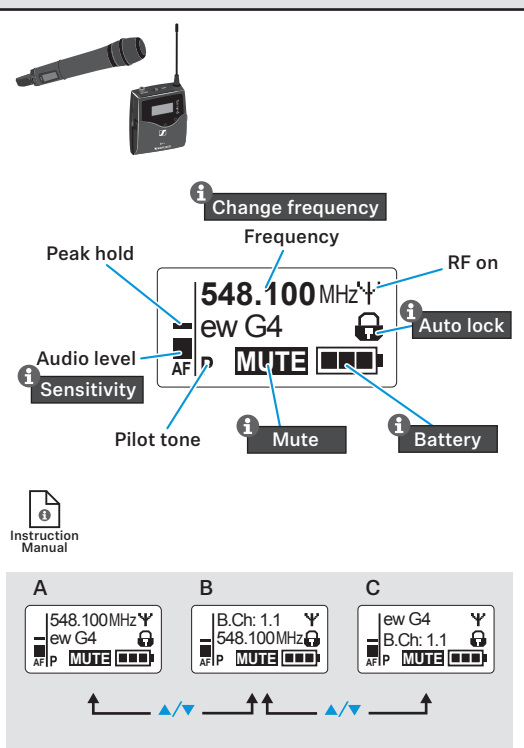
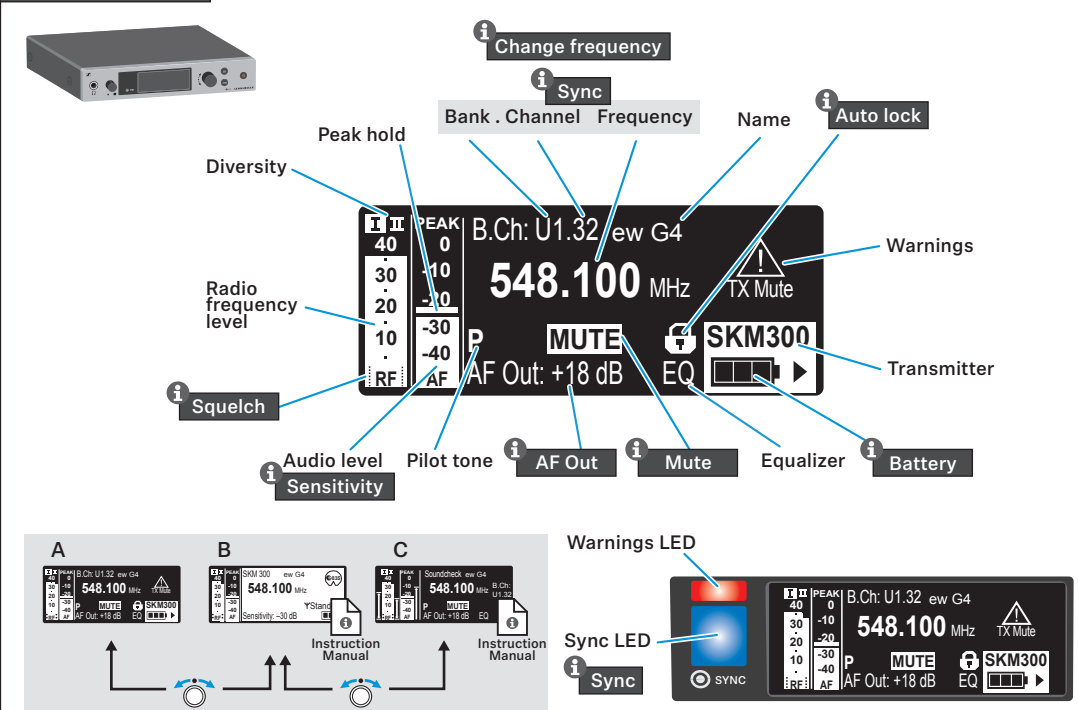
Off



Menu



Standard display



Auto lock

EM

- 1
- 2
- 3

Locked Unlock?

SET

SKM

- 1
- 2
- 3

Locked Unlock?

SET

SK

- 1
- 2
- 3

Locked Unlock?

SET

10 s → Auto lock

Instruction Manual

New frequency

Squelch

- 1

25 dB

5 dB

Change frequency

- 2
- 3

⚠ SKM/SK off!

Easy Setup EM	Frequency Preset EM, SK, SKM
Menu Squelch Easy Setup Frequency Preset	Menu Frequency Preset B.Ch: 1.1
Easy Setup Current List Scan New List Exit	Frequency Preset B.Ch: 2.6 558.025 MHz
Scan New List 1...20 518...558 MHz	Frequency Preset B.Ch: 2.1 558.025 MHz
Easy Setup Bank U6 Bank 1 Bank 2	Stored
Easy Setup B.Ch: 2.1 Sync 558.025MHz	

WAIT 30 s

Stored

No frequency → 1 Squelch: Middle ...

Instruction Manual

Sync

- 4

≤ 10 cm

≤ 4"

OR

✓ SYNC

✗ SYNC

Instruction Manual

Sensitivity

Menu Sensitivity -24 dB

-60 dB ... 0 dB

-48 dB ... 0 dB

AF PEAK

AF out

Menu AF Out +18dB

-24 dB ... +24 dB

LEVEL

Mute

Instruction Manual

SK 300

SKM 300

SKM 500

SKM 300 SKM 500

RF Mute On?

RF Mute Off?

AF Mute Mute On

AF Mute Mute Off

Mute Mode AF On/Off

Mute Mode RF On/Off

Mute Mode Push to Talk

Mute Mode Push to Mute

RX Mute On?

RX Mute Off?

EM 300-500

Network Control

WSM Sennheiser Control Cockpit Media Control

Multichannel - Easy Setup

Bank 1...20; U1...U6

Channel 1...32

max. 32 channels

RJ 45

SKM

ME 2 | MKE 2

ME 2

25 cm (10")

MKE 2

SL Headmic 1

2...3 cm (1")