

Contents

Safety instructions	2
Delivery includes	4
Product overview	5
Putting the Set 840 S system into operation	6
Setting up the transmitter	6
Connecting the transmitter to a sound source	7
Connecting the transmitter to the mains	11
Connecting the induction loop or headphones for hearing aids to the receiver	12
Wearing the receiver	13
Using the Set 840 S system	15
Switching the transmitter on/off	15
Switching the receiver on/off	16
Adjusting the volume	16
Searching for a sound source	17
Changing the transmission channel	17
Adjusting the balance	18
Switching between mono and stereo operation	18
Individually enhancing the speech intelligibility	19
Storing and charging the receiver	20
Charging a rechargeable battery in the transmitter's charging compartment	21
What if	22
... this indicator lights up?	22
... you press this button?	23
... you change the position of this control/switch?	23
... you hear acoustic signals or warning signals?	24
Cleaning the Set 840 S system	25
Cleaning the transmitter and the receiver	25
If a problem occurs	26
Additional technical information	28
Accessories and spare parts	30
Specifications	32
Manufacturer Declarations	34
Index	36

Safety instructions

- Please read this instruction manual carefully and completely before using the products.
- Make this instruction manual easily accessible to all users at all times. Always include this instruction manual when passing the products on to third parties.
- Do not use the products in situations which require special attention (e.g. when performing skilled jobs).
- Always keep the products dry and do not expose them to extreme temperatures.
- Use the products with care and set them up in a clean, dust-free environment.
- Varnish or furniture polish may degrade the feet of the transmitter, which could stain your furniture. You should therefore place the transmitter on a non-slip pad to avoid potential staining of furniture.
- This receiver allows you to set higher volumes than conventional receivers to which headphones can be connected. This can cause hearing damage in persons with healthy hearing and especially in children.
- Refer all servicing to qualified service personnel. Servicing is required if the products have been damaged in any way, liquid has been spilled, objects have fallen inside, the products have been exposed to rain or moisture, do not operate properly or have been dropped.
- **WARNING:** To reduce the risk of fire or electric shock, do not expose the products to rain or moisture.
- Use only the supplied mains unit.
- Disconnect the mains connector from the wall socket
 - to completely disconnect the products from the mains,
 - during lightning storms or when unused for long periods of time.
- Ensure that the mains unit is
 - always readily operable and easily accessible,
 - properly plugged into the wall socket,
 - not covered or exposed to direct sunlight for longer periods of time in order to prevent heat accumulation,
 - only operated within the permissible temperature range (see “Specifications” on page 32),
 - not operated near heat sources.

Intended use

Intended use includes

- having read this instruction manual, especially the chapter "Safety instructions" on page 2,
- using the products within the operating conditions and limitations described in this instruction manual.

"Improper use" means using the products other than as described in this instruction manual, or under operating conditions which differ from those described herein.

Safety instructions for the Lithium-Polymer rechargeable battery











The BA 300 is a Lithium-Polymer rechargeable battery. If abused or misused, this rechargeable battery may be damaged. Please understand that Sennheiser does not accept liability for damage arising from abuse or misuse.

WARNING!



In extreme cases, the rechargeable battery may even present a

- heat hazard,
- fire hazard,
- explosion hazard,
- smoke and gas hazard.

	Only charge rechargeable batteries with the appropriate Sennheiser chargers.		Do not heat above 70°C/ 158°F, e.g. do not expose to sunlight or throw into a fire.
	Return defective devices or exhausted rechargeable batteries to your specialist dealer.		When not using the rechargeable battery for extended periods of time, charge it regularly (every 6 months for about 1 hour).
	Do not short-circuit.		Only charge rechargeable batteries at ambient temperatures between 10°C/50°F and 40°C/104°F.
	Do not mutilate or dismantle.		Do not charge the rechargeable battery if the device is obviously defective.
	Store the devices/ rechargeable batteries in a cool and dry place at room temperature.		Do not expose to moisture.

Delivery includes


The Set 840 S system is available as an EU and a US version. The following table shows which items are included with the respective version.

Components of the Set 840 S system		EU	US
1	RR 840 S receiver with BA 300 Lithium-Polymer rechargeable battery	✓	
1	TR 840 transmitter with integrated charging compartments	✓	
1	NT 13 mains unit with		
	2 country adapters (EU, UK)	✓	
	1 country adapter (US)		✓
1	connection cable with two 3.5 mm stereo jack plugs for connection to a headphone socket	✓	
1	audio adapter (3.5 mm to 1/4" (6.3 mm) jack plug)	✓	
1	audio adapter for RCA socket (e.g. TB/Aux-Out)	✓	
1	audio adapter for SCART socket	✓	
1	MKE 800 TV-N microphone		✓
1	EZT 3011 induction loop	✓	
1	lanyard	✓	
1	clip for attaching the receiver	✓	
1	instruction manual	✓	
1	installation manual	✓	





Product overview

The overview pictures of the receiver and the transmitter can be found on the inside front cover of this instruction manual.

I Receiver

- ① Channel indicator
- ② Volume control
- ③ On/off button 
- ④ Balance control
- ⑤ Socket for headphones, induction loop or connection cable to hearing aid
- ⑥ Channel search button
- ⑦ Battery compartment
- ⑧ Induction loop

II Transmitter

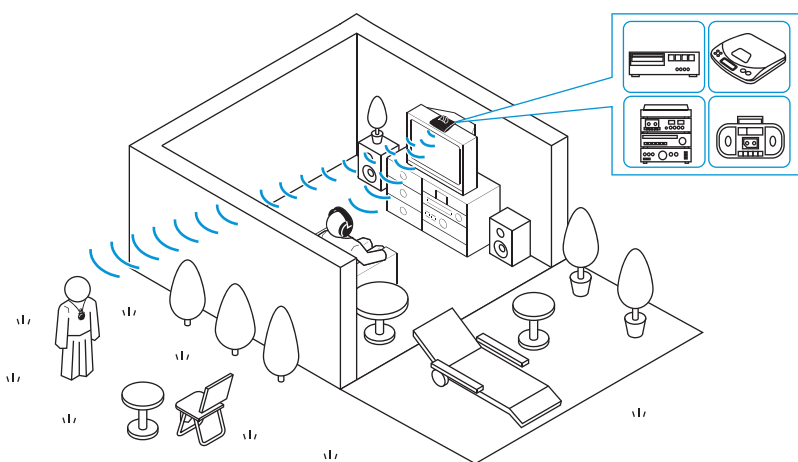
- ⑧ Charging compartment for receiver
- ⑨ Charging compartment for optional spare rechargeable battery
- ⑩ Charging indicator for optional spare rechargeable battery 
- ⑪ Charging indicator for receiver's rechargeable battery 
- ⑫ Operation indicator 
- ⑬ "Speech intelligibility" button 
- ⑭ Indicator for the selected speech intelligibility
- ⑮ Socket (marked blue) for connection of sound source or external microphone
- ⑯ ST/MO slide switch (stereo/mono)
- ⑰ Treble adjustment control
- ⑱ Channel selector switch
- ⑲ DC socket (marked yellow) for connection of mains unit

Putting the Set 840 S system into operation


Setting up the transmitter

- ▶ Choose a suitable place near your sound source (e.g. TV).
- ▶ Do not place the transmitter close to metal objects such as shelf bars, reinforced concrete walls, etc. as this can decrease the transmitter's range.

It is not necessary that the transmitter and receiver are in the same room, so you can move around freely in the home or outside in the garden.

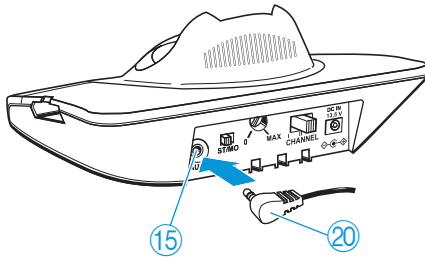


When the receiver leaves the range of the transmitter, it produces warning signals and then automatically switches off after 3 minutes.



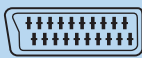

 One transmitter can be used to transmit to several receivers on the same frequency.

Connecting the transmitter to a sound source

- ▶ Switch your sound source (e.g. TV) off before connecting the transmitter.



- ▶ Plug one end of the connection cable 20 into the blue socket 15 of the transmitter.
- ▶ Check the available connection possibilities of your sound source (e.g. TV):

Connection possibility	Name of connection possibility
A 	Headphone socket
B 	RCA socket
C 	SCART socket (SCART adapter included with the EU version)
What if your sound source doesn't have any of these connection possibilities?	
D 	MKE 800 TV-N external microphone (included with the US version)

- ▶ Connect the transmitter as described in the corresponding chapter **A**, **B**, **C** or **D**.

i If possible, use the SCART connection **C**.

SCART adapter and microphone are also available as accessories (see page 30).

A Connecting the transmitter to a headphone socket

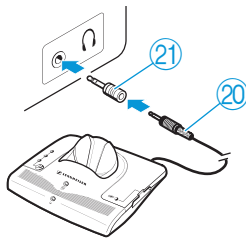
- ▶ Plug the other end of the connection cable ⑳ into the headphone socket on your sound source.

Is the plug on the connection cable too small for the headphone socket?

- ▶ Plug the adapter to 1/4" (6.3 mm) jack socket ㉑ onto the connection cable ⑳.
- ▶ Adjust the volume of the headphone socket on your sound source to a medium level. This improves the quality of wireless sound transmission. For detailed information, please refer to the instruction manual of your sound source (e.g. TV).

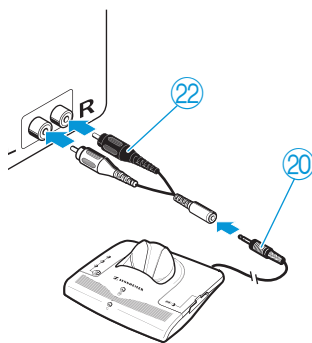


With most TVs, the headphone socket is located at the front or sides.



B Connecting the transmitter to an RCA socket

- ▶ Plug the audio adapter for RCA socket ㉒ onto the connection cable ⑳.
- ▶ Connect the red connector of the audio adapter ㉒ to the red RCA socket R of your sound source.
- ▶ Connect the white connector of the audio adapter ㉒ to the white or black RCA socket L of your sound source.

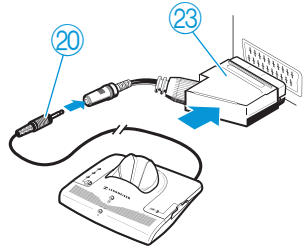


With most TVs, the RCA socket is located at the rear.

If your TV has several RCA sockets, use the socket **RCA output**.

C Connecting the transmitter to a SCART socket

- ▶ Plug the SCART adapter (23) onto the connection cable (20).
- ▶ Connect the SCART adapter (23) to the SCART socket on your TV.



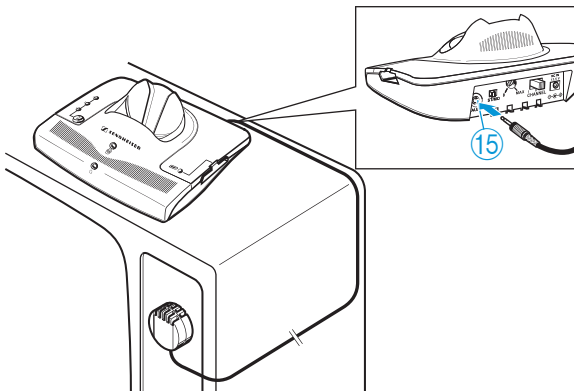
If your TV has several SCART sockets, use the socket SCART output.

D Using the MKE 800 TV-N external microphone

What if your sound source doesn't have any of the connections mentioned above? You can then use the optional MKE 800 TV-N microphone.

What if your sound source mutes the external loudspeakers if you use one of the connections mentioned above?

- ▶ Via the operating menu of your TV, check if the muting can be deactivated.
- ▶ If the muting persists, use the optional MKE 800 TV-N microphone instead of the connection cable.



To connect the MKE 800 TV-N microphone:


- ▶ If possible, adhere the supplied Velcro tape directly in front of the loudspeaker of your TV.
- ▶ Press the microphone onto the Velcro tape.
- ▶ Connect the jack plug of the microphone to the blue socket ⑮ of the transmitter.

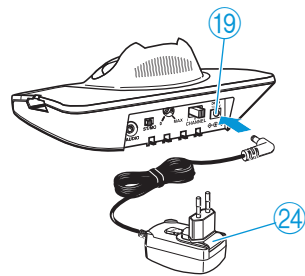
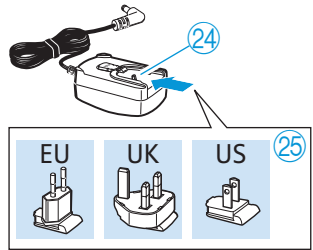


You can change the sound by varying the position of the microphone in front of the loudspeaker.

Connecting the transmitter to the mains


The EU and UK country adapters are included with the Set 840 S; the US country adapter is included with the US version of the Set 840 S.

- ▶ Slide the supplied country adapter ②⑤ onto the mains unit ②④.
- ▶ Connect the yellow connector of the mains unit to the yellow socket ①⑨ of the transmitter.
- ▶ Plug the mains unit ②④ into a wall socket.
The operation indicator ①②  on the transmitter lights up green.



When connecting the transmitter to the mains for the first time, charge the rechargeable battery for 3 hours as described in the chapter “Storing and charging the receiver” on page 20.



If there is no audio signal from the sound source for about 3 minutes, the transmitter automatically switches off. The operation indicator ①②  goes off.

To disconnect the transmitter from the mains, pull out the mains connector from the wall socket.

When not using the transmitter for extended periods of time (e.g. when you are on holiday), pull out the mains connector from the wall socket. In this case, however, the receiver’s rechargeable battery will not be recharged.

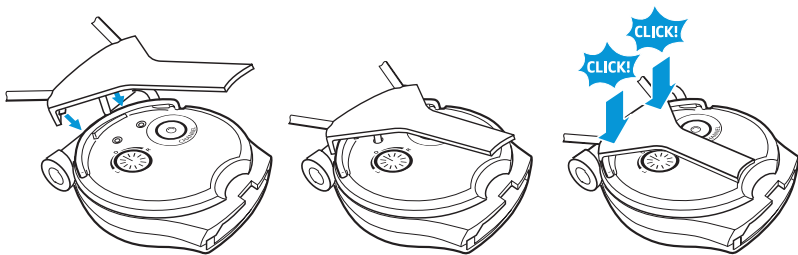
Connecting the induction loop or headphones for hearing aids to the receiver

The socket ⑤ of the receiver allows you to connect

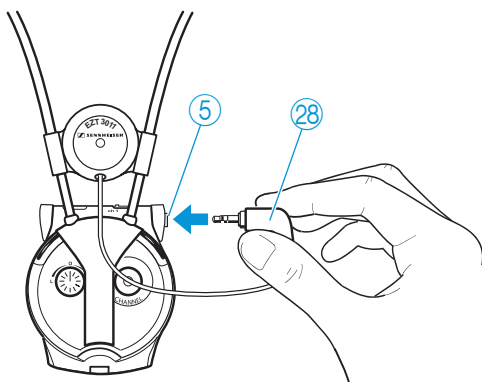
- the supplied induction loop ②⑧,
- headphones or
- a connection cable to your hearing aid or to induction couplers.

Connecting the induction loop

- ▶ Carefully remove the clip ②⑥ from the receiver.
- ▶ Attach the clip of the induction loop as shown.



- ▶ Connect the induction loop ②⑧ to the socket ⑤ of the receiver.

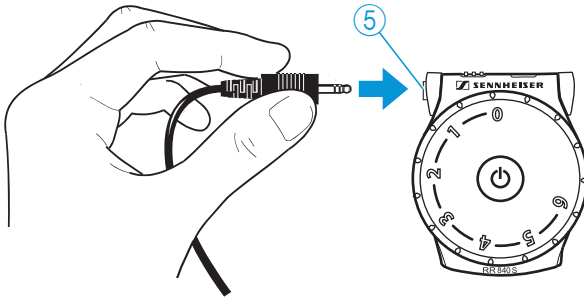


- ▶ Set your hearing aid to position "T".

If your hearing aid has no position "T", please contact your hearing aid acoustician.

i For alternative connection possibilities to your hearing aid as well as the connection to cochlea implants, please contact your hearing aid acoustician.

Connecting headphones



- ▶ Connect the 3.5 mm jack plug of the headphones to the socket ⑤ of the receiver.

Wearing the receiver

In order to wear the receiver, you can use the supplied lanyard ⑳, the clip ㉔ or the supplied induction loop ㉕. The induction loop is suitable for users of hearing aids, the lanyard and the clip are useful if you are using headphones.

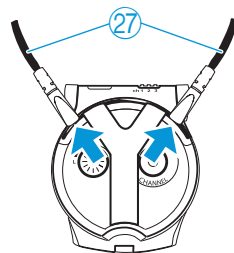
Wearing the receiver around the neck

If you want to wear the receiver around your neck, use

- the supplied lanyard ㉔ or
- the connected induction loop ㉕ (where applies).

To attach the lanyard ㉔:

- ▶ Connect the fasteners of the lanyard ㉔ to the metal ring at the rear of the receiver.



- ▶ Wear the receiver around your neck, with the Sennheiser logo facing away from your body.

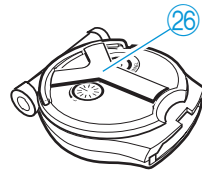


Attaching the receiver to clothing or belt

If you want to attach the receiver to your clothing or belt, use the attachment clip ②⑥.

To attach the receiver:

- ▶ Attach the clip ②⑥ to your clothing or belt.



To remove the receiver:

- ▶ Pull the clip ②⑥ with the receiver away from your clothing or belt.

