


# Information on this manual

 This manual describes how to put your Flex 5000 into operation and gives an overview of its most important functions. Also observe the safety guide enclosed with the product and the detailed instruction manual which can be downloaded at [www.sennheiser.com/download](http://www.sennheiser.com/download).

## Contents

<b>Information on this manual</b> .....	<b>1</b>
<b>Package contents</b> .....	<b>2</b>
<b>Product overview</b> .....	<b>3</b>
<i>Receiver status</i> LED .....	5
<i>Transmitter status</i> LED .....	5
Overview of the acoustic signals/beeps .....	5
<b>Putting the Flex 5000 into operation</b> .....	<b>6</b>
Setting up the transmitter .....	6
Connecting the transmitter to an audio source .....	6
Connecting the transmitter to the mains .....	10
Charging the receiver's rechargeable battery .....	11
Displaying the remaining operating time of the rechargeable battery .....	12
Using the charging reminder function .....	13
<b>Using the Flex 5000</b> .....	<b>14</b>
Connecting headphones or an induction loop to the receiver .....	14
Switching the wireless headphone system on .....	15
Switching the wireless headphone system off .....	16
Attaching the receiver to clothing .....	16
Adjusting the volume .....	18
Adjusting the balance .....	19
Selecting a hearing profile for sound enhancement .....	20
Activating/deactivating the speech intelligibility function .....	22
<b>Cleaning and maintaining the Flex 5000</b> .....	<b>24</b>
Replacing the receiver's rechargeable battery .....	24
<b>Using additional functions</b> .....	<b>26</b>
Pairing one or several receivers with the transmitter ...	26
Advanced settings .....	26
Restoring the factory default settings .....	30
<b>If a problem occurs ...</b> .....	<b>32</b>
Leaving the range of the transmitter .....	35
<b>Specifications</b> .....	<b>36</b>

EN

DE

FR

ES

EN Package contents

# Package contents



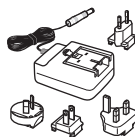
RR Flex receiver with built-in rechargeable battery



TR 5000 transmitter with charging station



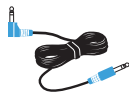
MX 475 earphones



NT 5-10AW power supply unit with multi-country adapters (EU, UK, US, AU)



Optical digital cable, 1.5 m



Stereo audio cable with 3.5 mm jack plugs, 1.5 m



Safety guide



Quick guide



Instruction manual in English, German, French, and Spanish

The instruction manual in other languages can be downloaded as a PDF file at [www.sennheiser.com/download](http://www.sennheiser.com/download).

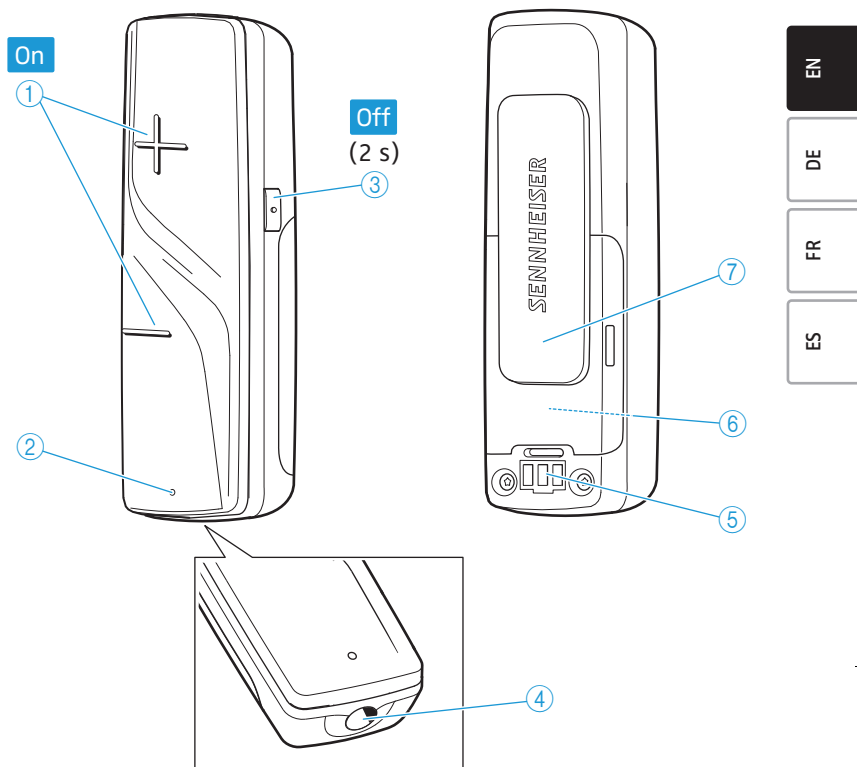


A list of accessories can be found on the Flex 5000 product page at [www.sennheiser.com](http://www.sennheiser.com). For information on suppliers, contact your Sennheiser partner.

To find a Sennheiser partner in your country, search at [www.sennheiser.com](http://www.sennheiser.com).

# Product overview

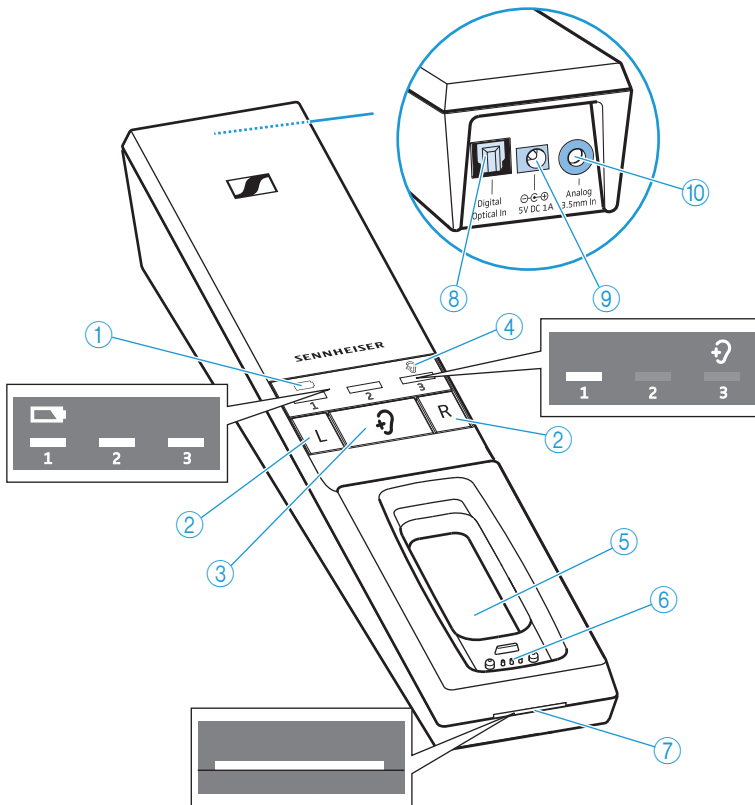
## Overview of the RR Flex receiver






- ① Volume buttons + and – and for switching the receiver on
- ② *Receiver status* LED (see page 5)
- ③ *Speech intelligibility* button and for switching the receiver off (press for 2 seconds)
- ④ 3.5 mm jack socket for connecting headphones or and induction loop for hearing aids
- ⑤ Charging contacts
- ⑥ Built-in rechargeable battery
- ⑦ Attachment clip

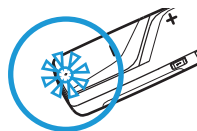
## EN Product overview





## Overview of the TR 5000 transmitter



- ① **Battery LED** ,  
indicating the charging process/remaining operating time  
of the receiver (see page 11 and 12)
- ② Balance buttons for the right ear **R** and the left ear **L**
- ③ Hearing profile button   
for selecting the hearing profiles (see page 20)
- ④ Hearing profile LED ,  
indicating the activated hearing profile (see page 20)
- ⑤ Charging compartment for receiver
- ⑥ Charging contacts for receiver with holding magnets
- ⑦ **Transmitter status LED** (see page 5)
- ⑧ **Digital Optical In** audio input (marked pink) for connecting  
a digital audio source (optical)
- ⑨ **5V DC 1A** socket (marked yellow) for connecting the power  
supply unit
- ⑩ **Analog 3.5 mm In** audio input (marked blue) for  
connecting an analog audio source (3.5 mm jack socket)

## Receiver status LED



Receiver status LED	Receiver ...
—	... is switched off.
 lights up green	... is connected to the transmitter.
 lights up red	... is connected to the transmitter, the rechargeable battery is almost empty.
 flashes green	... is not connected to the transmitter or cannot connect to the transmitter.
 flashes red	... is not connected to the transmitter or cannot connect to the transmitter, the rechargeable battery is almost empty.

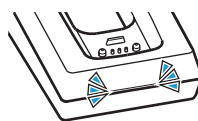
EN




DE

FR

ES

## Transmitter status LED



Transmitter status LED	Transmitter...
—	... is in standby mode.
 lights up white	... and stethoset receiver are connected. The speech intelligibility function is deactivated (see page 22).
 lights up blue	... and stethoset receiver are connected. The speech intelligibility function is activated (see page 22).
 flashes blue and white	... has detected an incompatible digital audio signal (see page 7).

## Overview of the acoustic signals/beeps

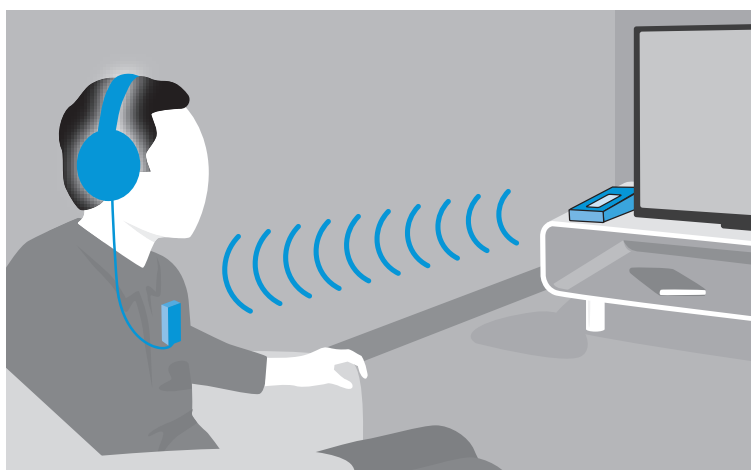
Beeps...	Meaning
during operation, 2 beeps	The rechargeable battery is almost empty, recharge it (see page 11).
during operation, no audio transmission, 5 beeps	The receiver is outside the transmission range (see page 35).
when changing the volume	The maximum or minimum volume is reached (see page 18).
when changing the balance setting	The maximum or minimum balance setting is reached (see page 19)

EN Putting the Flex 5000 into operation

## Putting the Flex 5000 into operation

### Setting up the transmitter

- ▶ Choose a suitable place near your sound source.
- ▶ Separate the transmitter from other wireless devices in the room by at least 50 cm/20" to avoid interference.
- ▶ Do not place the transmitter close to metal objects such as shelf bars, reinforced concrete walls, etc. as this can decrease the transmitter's range.



### Connecting the transmitter to an audio source

You can connect the transmitter either to a digital or an analog audio source (e.g. a TV and a stereo hi-fi system).

If you connect an audio source to **both** inputs (digital and analog), only the analog audio source will be reproduced.

**i** You can also refer to the beginner's video guides on how to connect your digital wireless headphone system to a TV: [www.sennheiser.com/how-to-videos](http://www.sennheiser.com/how-to-videos).

- ▶ Switch your audio sources off before connecting the transmitter.
- ▶ Check the connection possibilities of your audio source (audio output, usually marked "OUT").
- ▶ Select the corresponding connection cable and, if necessary, a suitable adapter
- ▶ To connect the transmitter to your audio source, refer to the connection diagram suitable for your audio source (see the following chapters). Follow the color codings on the transmitter and on the cables.


Connection possibilities of the audio source	Color on transmitter	Connection cable	Page
<b>A</b> Optical (digital)	pink	Optical digital cable	7
<b>B</b> 3.5 mm jack socket (analog)	blue	Stereo audio cable	8
<b>C</b> RCA (analog)		Stereo audio cable with RCA adapter (3.5 mm jack socket to 2 RCA connectors; optional accessory)	9
<b>D</b> SCART (analog)		Stereo audio cable with SCART adapter (3.5 mm jack socket to SCART connector; optional accessory)	10

EN

DE

FR

ES

 Accessories and adapters are available from your local Sennheiser partner.

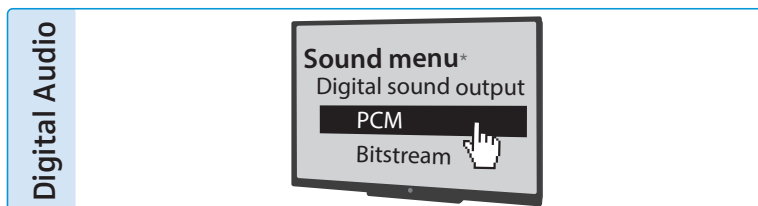
### Connection possibility A: optical (digital)

**A**

To achieve the best possible listening experience, connect the transmitter to your TV or hi-fi system using the supplied optical digital cable.

Note that your wireless headphone system only supports digital signals coded in the **PCM** format. Information on how to set the audio format of the connected audio source to PCM can be found in the Sound menu or in the instruction manual of your device.

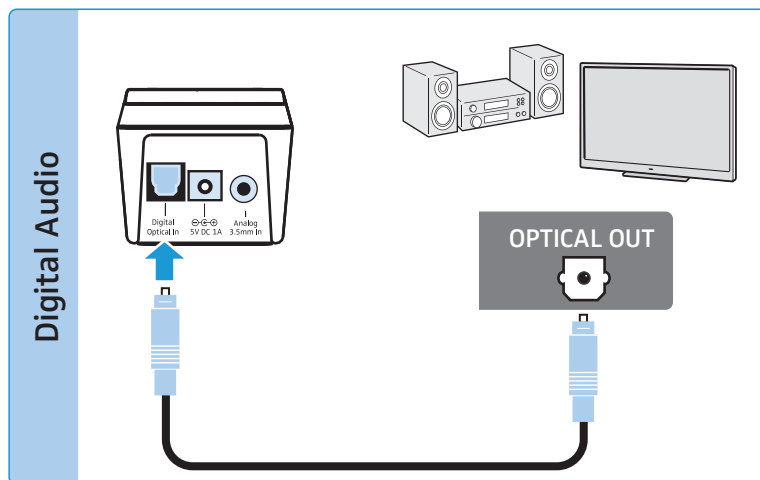
If an incompatible digital audio signal is being received, the *Transmitter status* LED flashes white and blue. Audio cannot be reproduced.



\* The appearance of the Sound menu can vary depending on the device you are using.

## EN Putting the Flex 5000 into operation

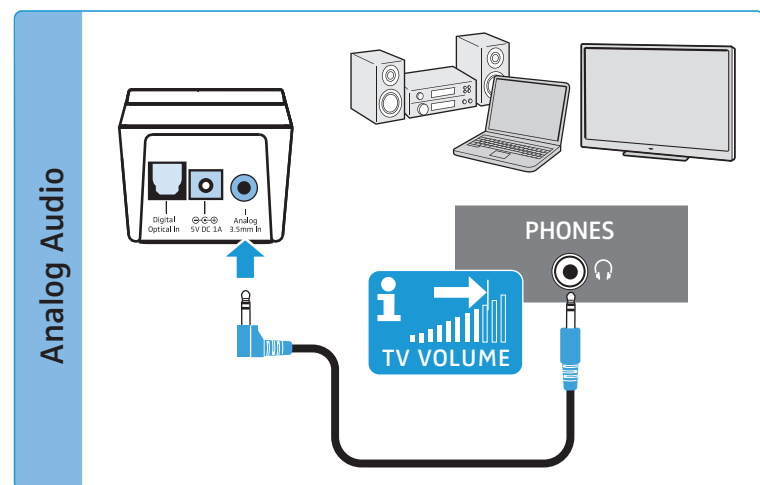
- ▶ Connect the optical digital cable to the pink **Digital Optical In** digital audio input of the transmitter and to the optical output of your audio source.



## Connection possibility B: 3.5 mm jack socket (analog)

B

- ▶ Connect the stereo audio cable to the blue **Analog 3.5 mm In** audio input (3.5 mm jack socket) of the transmitter and to the 3.5 mm headphone socket of your audio source.



- i** Adjust the volume of the headphone socket on your TV/ audio source to at least a medium level.

This improves the quality of wireless audio transmission. For detailed information, please refer to the instruction manual of your TV/audio source.

If the headphones socket on your audio source is a 6.3 mm/ 1/4" jack socket, you require an adapter (3.5 mm jack plug to 6.3 mm/1/4" jack plug, optional accessory) for the supplied 3.5 mm stereo audio cable.



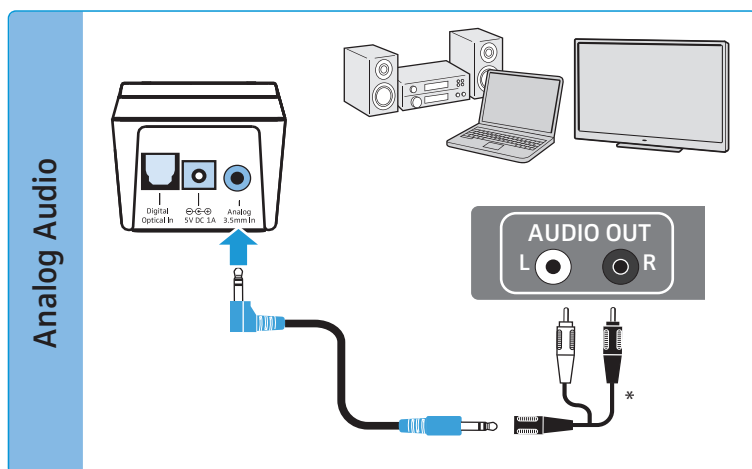
## Putting the Flex 5000 into operation EN

Some TV models mute the loudspeakers when you connect the transmitter to the 3.5 mm headphone socket. Other TV models have their own menu for adjusting the volume of the headphone socket. Check the menu of your TV for information on how to deactivate the muting function or adjust the volume. Alternatively, connect the TV and the transmitter using a different connection possibility (A, C or D).

### Connection possibility C: RCA sockets (analog)

C

- ▶ Plug the RCA adapter\* onto the stereo audio cable.
- ▶ Connect the stereo audio cable to the blue 3.5 mm jack socket of the transmitter.
- ▶ Connect the RCA connectors to the RCA sockets (mostly labeled "AUDIO OUT" or  $\ominus \oplus$ ) of your audio source. Connect the red connector to the red RCA socket and the white connector to the white or black RCA socket.



\* optional accessory

EN



DE

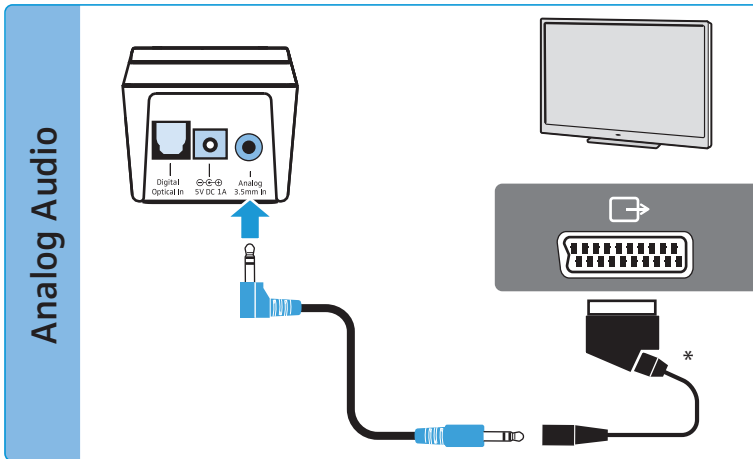
FR

ES

## EN Putting the Flex 5000 into operation

**Connection possibility D: SCART socket (analog)****D**

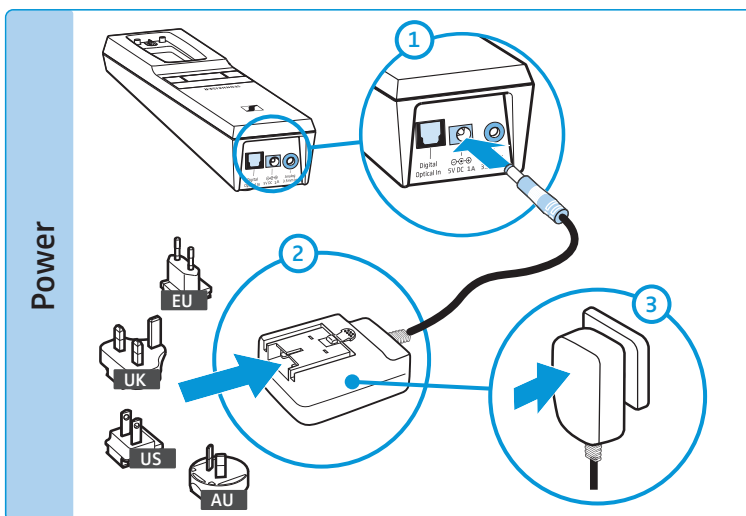
- ▶ Plug the SCART adapter\* onto the stereo audio cable.
- ▶ Connect the stereo audio cable to the blue 3.5 mm jack socket of the transmitter.
- ▶ Connect the SCART connector to the SCART socket (mostly labeled  or ) of your audio source.



\* optional accessory


**Connecting the transmitter to the mains**


- 1 Connect the connector of the power supply unit to the yellow socket of the transmitter.
  - 2 Select a suitable country adapter and slide it onto the power supply unit until it clicks audibly into place.
  - 3 Plug the power supply unit into the wall socket.
- All LEDs on the transmitter light up for 5 seconds. The transmitter is in standby mode.

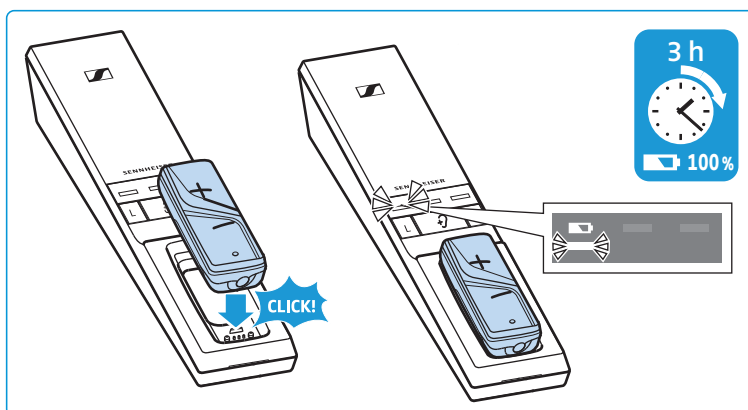







## Charging the receiver's rechargeable battery

A complete charging cycle takes **about 3 hours**. Before using the receiver for the first time, charge its rechargeable battery for a complete charging cycle without interruption.



When the rechargeable battery is almost empty, the *Receiver status* LED lights up red and you hear 2 beeps via the receiver. The *Battery* LED  on the transmitter lights up white. The receiver switches off after a few minutes.


- ▶ Place the receiver into the transmitter's charging compartment so that the volume buttons face upwards. The receiver is magnetically oriented to the correct position. The receiver automatically switches off and the *Battery* LED  on the transmitter lights up white. The LED segments display the charge status of the rechargeable battery. When the rechargeable battery is fully charged, all LED segments light up white.




Battery LED 	Meaning
–	Transmitter is not charging.
 1 <sup>st</sup> segment flashes	Rechargeable battery is being charged. Less than 1/3 of the charge capacity is reached.
 1 <sup>st</sup> segment lit, 2 <sup>nd</sup> segment flashes	Rechargeable battery is being charged. Up to 1/3 of the charge capacity is reached.
 1 <sup>st</sup> + 2 <sup>nd</sup> segments lit, 3 <sup>rd</sup> segment flashes	Rechargeable battery is being charged. Up to 2/3 of the charge capacity is reached.
 All segments lit	Rechargeable battery is fully charged.


## EN Putting the Flex 5000 into operation






BatteryLED 	Meaning
 BatteryLED flashes rapidly	A charging error/battery error has occurred (see page 24).

 Always store the receiver in the transmitter's charging compartment to ensure that it is fully charged when needed. The intelligent battery charging technology prevents overcharging.

 The display during charging can be set so that it automatically switches off after 30 seconds (see page 27).


## Displaying the remaining operating time of the rechargeable battery


When you switch the receiver on, the *BatteryLED*  displays the remaining operating time/charge status.

BatteryLED 	Meaning
 BatteryLED flashes slowly	Rechargeable battery is empty; recharge it
 1 <sup>st</sup> segment lit	approx. 4 hrs of operating time
 1 <sup>st</sup> + 2 <sup>nd</sup> segments lit	approx. 8 hrs of operating time
 All segments lit	approx. 12 hrs of operating time


To indicate that the operating time is decreasing, each LED segment slowly dims before it goes off completely.

If the actual operating time differs widely from the specified values, the rechargeable battery is probably exhausted and should be replaced. Information on the rechargeable battery can be found on page 24.

 The display of the remaining operating time can be set so that it automatically switches off after 30 seconds (see page 27).

 If more than one receiver is connected to the transmitter, the remaining operating time/charge status cannot be displayed.


## Using the charging reminder function

When the receiver is switched off and the transmitter automatically switches off (standby mode), the *Battery*LED  will flash back and forth for 10 minutes to remind you to charge the receiver.



► Charge the receiver by placing it into the transmitter's charging compartment (see page 11).

The LED stops flashing and the charging process starts.

 You can also switch off the charging reminder function (see page 28).

EN

DE

FR

ES

EN Using the Flex 5000

## Using the Flex 5000

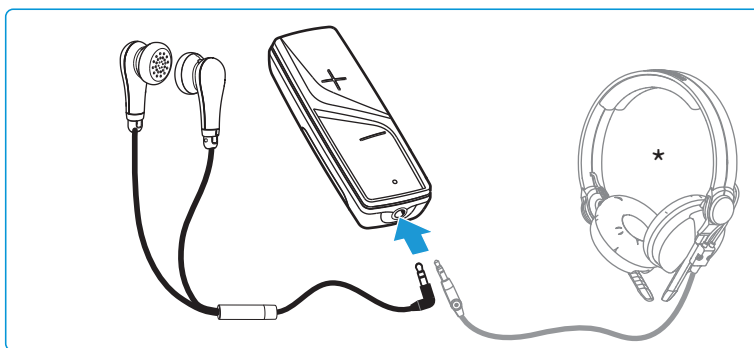
### Connecting headphones or an induction loop to the receiver

You can connect any headphones or induction loop for hearing aids with a 3.5 mm jack plug to the RR Flex receiver.

#### Connecting headphones

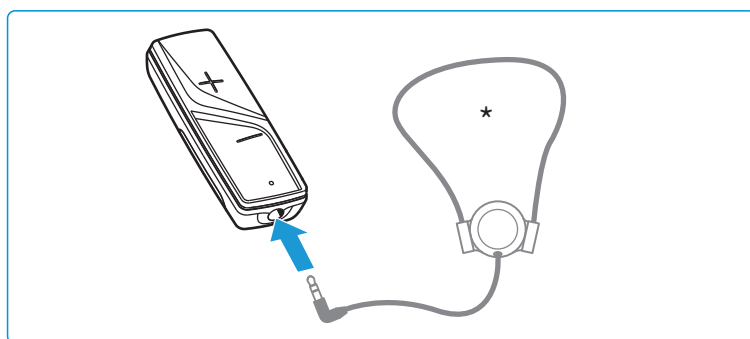
We recommend using closed headphones or earphones/ear canal phones to avoid echoes from e.g. the TV loudspeaker.

- ▶ Connect the 3.5 mm jack plug of the headphones (e.g. MX 475, supplied) to the jack socket of the receiver.



#### Connecting an induction loop for hearing aids

You can only use an induction loop if your hearing aid supports an induction coil (T-coil).



- ▶ Connect the 3.5 mm jack plug of the induction loop (e.g. Sennheiser EZT 3012, optional accessory) to the jack socket of the receiver.
- ▶ Set your hearing aid to position "T".

\* optional accessory

**i** If your hearing aid has no position "T" or if you want to use another connection possibility for your hearing aid or cochlea implant, please contact your hearing aid acoustician.

## Switching the wireless headphone system on



### WARNING

#### Danger of hearing damage due to high volumes!

This receiver allows you to set higher volumes than conventional devices. Constant high-volume use can cause hearing damage.

- ▶ Before putting the receiver and the connected headphones on, set the volume on the receiver to a low level.
- ▶ Do not expose yourself to high volume levels for extended periods of time.
- ▶ Use a hearing profile (see page 20) that improves especially speech intelligibility without the need for a high volume.

EN

DE

FR

ES

### 1 Switch your audio source on.

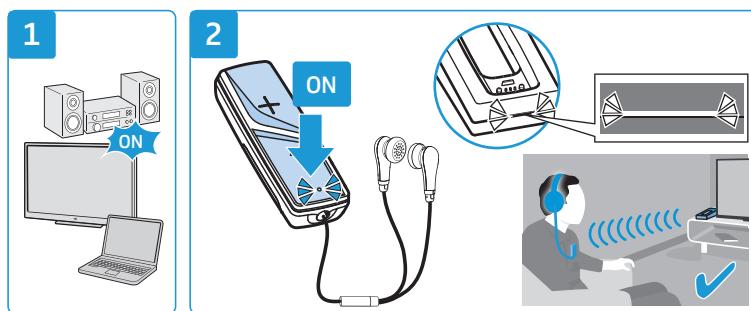
If the transmitter is connected to the headphone socket (see page 8) of your TV/audio source, adjust the volume of the headphone socket on your TV/audio source to at least a medium level.



### 2 Take the receiver out of the transmitter's charging compartment and press the volume button + or -.

The receiver switches on. The *Receiver status* LED lights up green. The transmitter automatically switches on and the *Transmitter status* LED lights up white or blue. The audio transmission starts.

The remaining operating time of the receiver is displayed on the transmitter (see page 12).



EN Using the Flex 5000

## Switching the wireless headphone system off

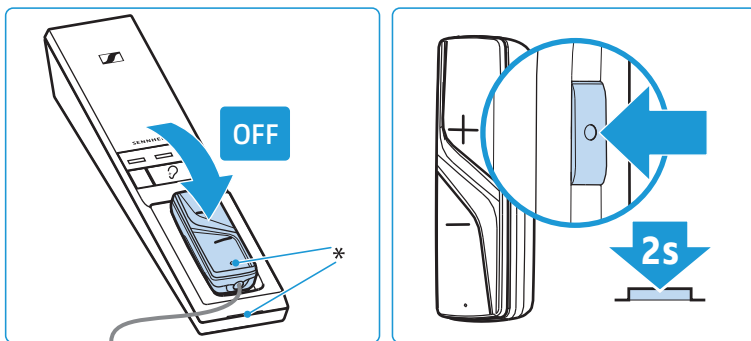
- ▶ Place the receiver into the transmitter's charging compartment.

The receiver switches off. The *Receiver status* LED goes off. The charging process starts (see page 11).

Or, if you want to switch the receiver off without placing it into the transmitter's charging compartment:

- ▶ Press the *Speech intelligibility* button for 2 seconds. The receiver switches off. The *Receiver status* LED goes off. The transmitter automatically switches off (standby) when there is no receiver connected. The *Transmitter status* LED goes off.

**i** Always store the receiver in the transmitter's charging compartment to ensure that it is fully charged when needed.



\* LED goes off

**i** If the receiver is outside the transmission range for more than 5 minutes or if the transmitter receives no audio signal for more than 30 minutes, the wireless headphone system switches off automatically (standby).

To disconnect the transmitter from the power supply system (e.g. when you are on holiday):

- ▶ Unplug the power supply unit from the wall socket.

## Attaching the receiver to clothing

Depending on the connected headphones or induction loop, please observe the following attachment recommendations for your receiver:

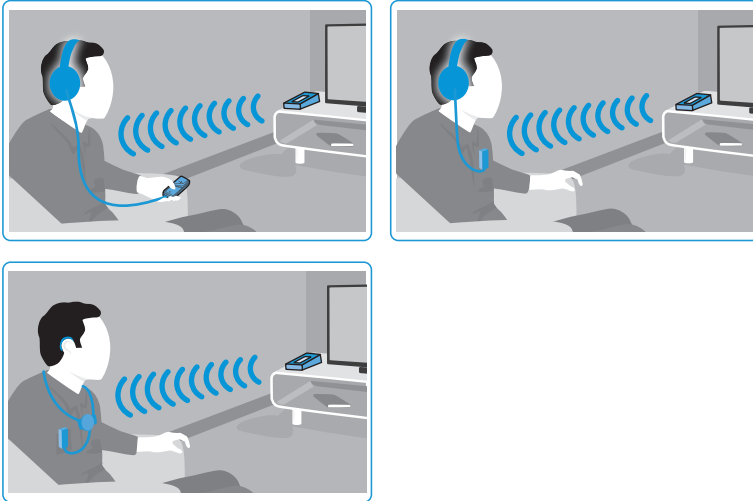
- Place the receiver next to you so that you can take it in your hand and operate it.
- Use the clip to attach the receiver to your clothing. Make sure that the headphone cable does not hinder your move-



## Using the Flex 5000 EN

ments and that there is a free line of sight between the receiver and the transmitter. The volume buttons face away from your body to facilitate ease of use.

- Place the induction loop around your neck so that the receiver rests on your chest. The volume buttons face away from your body to facilitate ease of use.



EN Using the Flex 5000

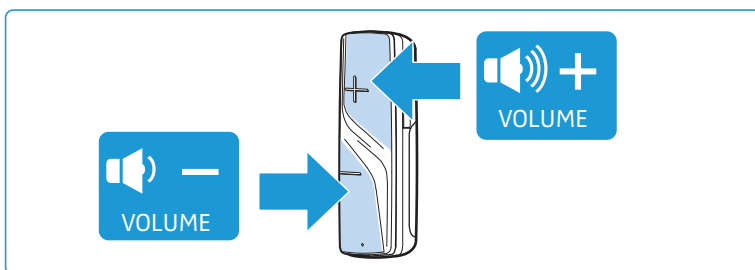
## Adjusting the volume



### WARNING

**Danger of hearing damage due to high volumes!**

- ▶ Before putting the receiver and the connected headphones on, set the volume on the receiver to a low level.
  - ▶ Do not expose yourself to high volume levels for extended periods of time.
- 
- ▶ Press the volume button **+** or the volume button **-** until the volume is adjusted to a comfortable level. When the minimum or maximum volume is reached, you hear a beep via the receiver.



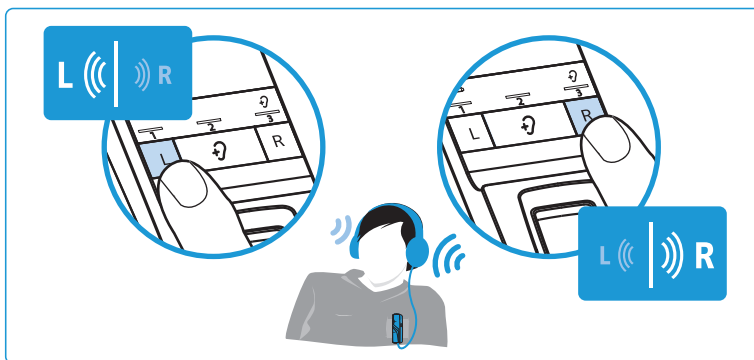
If you have set a very high volume level and switch the receiver off and on again, the volume is reset to a moderate level to protect your hearing.

## Adjusting the balance

The Balance buttons allow for left/right volume adjustment. Adjust the balance so that you hear equally well with both ears.

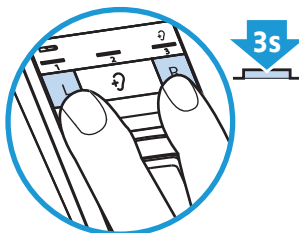
**i** The balance setting is stored on the receiver. If you are using several receivers with a transmitter, the respective receivers are optimally adjusted to match the personal hearing preferences of the users (e.g. you and your partner). Please note that the personal hearing preferences can only be adjusted when only receiver is connected to the transmitter.

- ▶ Press the balance button **R** (right) or **L** (left) on the transmitter to gradually increase or reduce the volume for your right or left ear. When the minimum or maximum balance setting is reached, you hear a beep via the receiver.



To reset the balance setting to the middle setting:

- ▶ Simultaneously press the balance buttons **R** (right) and **L** (left) on the transmitter for 3 seconds.



**i** To prevent accidental adjustment of the balance settings, you can activate the balance protection (see page 29).

