

EN Using additional functions

Using additional functions

The following additional functions are not required for normal use of the wireless headphone system. You can, however, extend the potential use of the system and adjust some of the functions to your individual needs.

Pairing one or several stethoset receivers with the transmitter

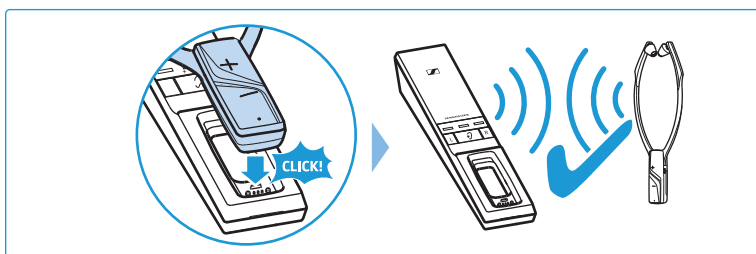
The stethoset receiver and the transmitter of your wireless headphone system are factory pre-paired. The following steps are only necessary if you want to pair additional stethoset receivers with the transmitter.

You can simultaneously use up to 4 paired stethoset receivers with your transmitter. All other paired and switched-on receivers cannot connect to the transmitter.

i If more than one stethoset receiver is connected to the transmitter, the remaining operating time/charge status and the hearing profile cannot be displayed. In addition, the balance and a hearing profile cannot be adjusted. These functions can only be used/adjusted when only one stethoset receiver is connected to the transmitter.

- ▶ Place the stethoset receiver into the transmitter's charging compartment.

The stethoset receiver is paired with the transmitter.



Advanced settings

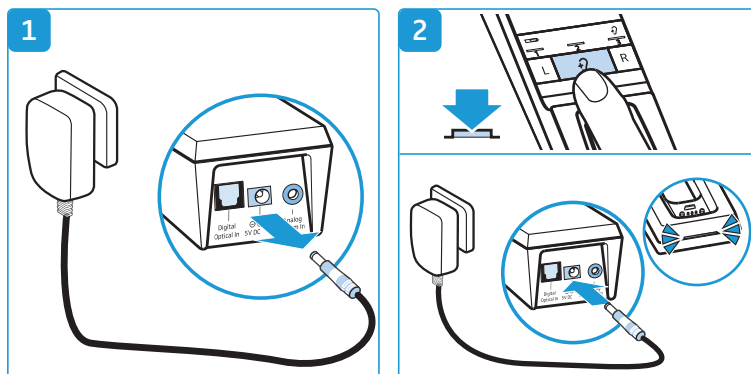
The advanced settings allow you to adjust the wireless headphone system to your individual needs and to protect the settings against accidental changes.

Activating the protected settings mode

You can change the advanced settings by activating the protected settings mode:

Using additional functions EN

- 1 Disconnect the transmitter from the power supply system by unplugging the connector of the power supply unit.
- 2 Keep the Hearing profile button pressed and connect the transmitter to the power supply system by connecting the connector of the power supply unit to the yellow socket of the transmitter.



EN

DE

FR

ES

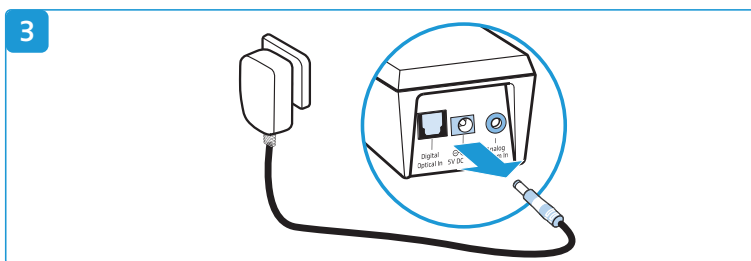
The protected settings mode is activated. The *Transmitter status* LED flashes blue. The LED segments indicate the current settings as specified in the following chapters:

- battery status display (see page 25)
- charging reminder function (see page 26)
- hearing profile and balance protection (see page 27)

Deactivating the protected settings mode and saving the advanced settings

To save the advanced settings and to deactivate the protected settings mode:

- 3 Disconnect the transmitter from the power supply system by unplugging the connector of the power supply unit.



Battery status display

This setting is saved on the **transmitter**, independent of the stethoset receiver you are using.



To change the battery status display:

- ▶ Make sure that the protected settings mode is activated (see page 24).

EN Using additional functions



- ▶ Press the Balance button L.

Status and display of the <i>Battery</i> LED	Function/behavior
permanently activated (operation and charging)*  1 st segment lit	The current charge status is permanently displayed during charging. The remaining charge status is permanently displayed during operation.
activated for 30 seconds (operation and charging)  1 st segment off	The current charge status is displayed for 30 seconds during charging. Then all LEDs go off. The charging process is continued. The remaining charge status is displayed for 30 seconds during operation. The battery status display then goes off.

* factory setting

- ▶ Save the setting by disconnecting the transmitter from the power supply system (see page 25).

Charging reminder function

This setting is saved on the transmitter, independent of the stethoset receiver you are using.



To activate or deactivate the function:

- ▶ Make sure that the protected settings mode is activated (see page 24).



- ▶ Press the Balance button R.



Status and display of the charging reminder function	Function/behavior
activated*  3 rd segment lit	When you switch the stethoset receiver off and the transmitter switches to standby mode, the battery status display will flash for 10 minutes to remind you to charge the stethoset receiver.
deactivated  3 rd segment off	After switching the wireless headphone system off, all LEDs remain off.

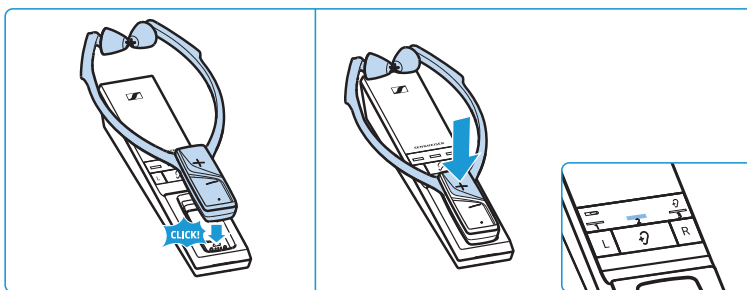
* factory setting


- ▶ Save the setting by disconnecting the transmitter from the power supply system (see page 25).

Hearing profile and balance protection


This setting is saved on the stethoset receiver, independent of the transmitter you are using.

- ▶ Make sure that your stethoset receiver's balance setting and hearing profile are correctly adjusted (see page 17 and 18).
- ▶ Make sure that the protected settings mode is activated (see page 24).
- ▶ Place the stethoset receiver into the transmitter's charging compartment.
- ▶ Press the volume button + on the stethoset receiver to activate or deactivate the hearing profile and balance protection.



Status and display of the protection function	Function/behavior
activated  2 nd segment lit	The activated hearing profile and the balance setting cannot be changed/deactivated.

EN Using additional functions

Status and display of the protection function	Function/behavior
deactivated*  2 nd segment off	The hearing profiles can be changed at any time by pressing the Hearing profile button for 2 seconds. The balance setting can be changed.


* factory setting

- ▶ Save the setting by disconnecting the transmitter from the power supply system (see page 25).

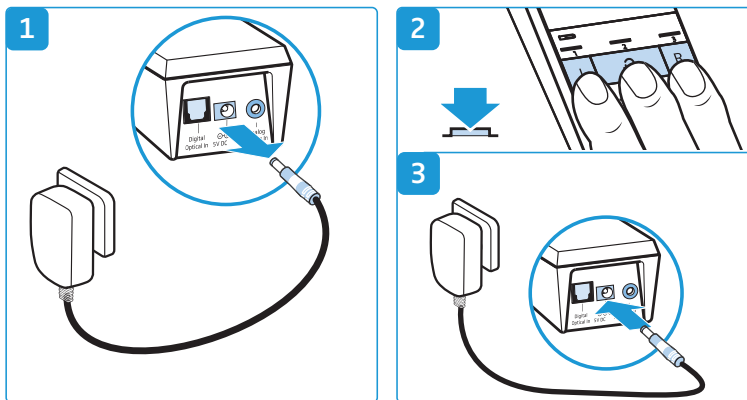
i If you are using several stethoset receivers and want to protect the activated hearing profiles from accidental adjustment, you can place the stethoset receivers, one after the other, into the transmitter's charging compartment to activate the hearing profile and balance protection.

Restoring the factory default settings

To restore the transmitter to the factory settings:

- 1 Disconnect the transmitter from the power supply system by unplugging the connector of the power supply unit.
- 2 Simultaneously press and hold the buttons L,  and R.
- 3 Connect the transmitter to the power supply system by connecting the connector of the power supply unit to the yellow socket of the transmitter while keeping the 3 buttons pressed for at least 3 seconds.

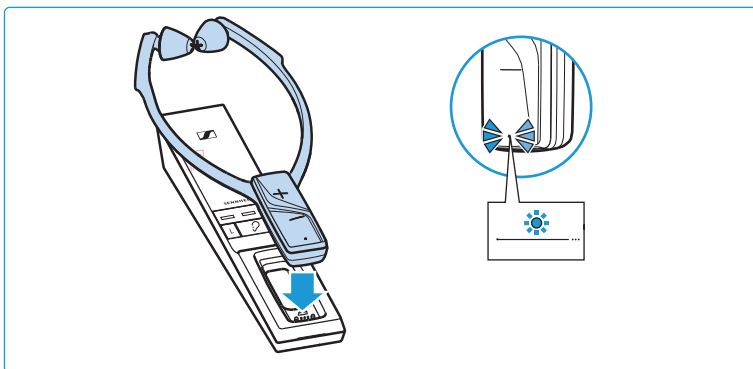
All LEDs on the transmitter flash. The transmitter settings are restored to the factory settings.



To restore a stethoset receiver to the factory settings:

- ▶ Place the stethoset receiver into the transmitter's charging compartment.

The *Receiver status* LED flashes green. The settings of the stethoset receiver are also restored to the factory settings.



EN

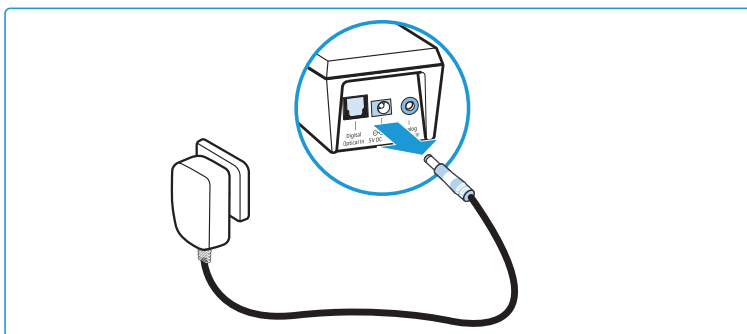
DE

FR

ES

- i** If you place the stethoset receiver into the transmitter's charging compartment at the very beginning of the restore procedure, the factory settings of the transmitter and the receiver are restored simultaneously.

- ▶ Disconnect the transmitter from the power supply system by unplugging the connector of the power supply unit. The factory settings are restored and you can use the wireless headphone system again.



EN If a problem occurs ...

If a problem occurs ...

Problem	Possible cause	Possible solution	Page
Transmitter does not switch on	No connection to the power supply system.	Check the connections of the power supply unit.	10
Stethoset receiver cannot be switched on	The rechargeable battery is empty.	Recharge the rechargeable battery.	11
	The rechargeable battery is deep discharged.	Recharge the rechargeable battery for several hours. If the rechargeable battery is deep discharged, the charging process might take a while to start (up to 1 hour).	
No sound	No connection to the power supply system.	Check the connections of the power supply unit.	10
	The audio plug is not properly connected.	Check the audio plug connection.	6
	The audio source is switched off.	Switch the audio source on.	–
	The volume of the analog audio source is either set to the minimum or is on mute.	Increase the volume on the audio source to at least a medium level/deactivate the muting function on the audio source.	–
	The audio cable is defective.	Replace the audio cable.	–
	The stethoset receiver is not correctly paired with the transmitter (e.g. additional stethoset receiver).	Pair the stethoset receiver with the transmitter again.	24
No sound when a digital audio source is connected	Cables are connected to both the digital and the analog audio input.	Remove the cable from the analog audio input.	6
	The connected digital audio source uses an incompatible audio format. The <i>Transmitter status</i> LED flashes white and blue.	Set the audio format of your audio source to "PCM", with a sampling rate of max. 96 kHz (see the instruction manual of the audio source).	–
Occasional sound dropouts, it might be that you hear 5 beeps in the stethoset receiver	The stethoset receiver is out of the transmitter's range.	Reduce the distance between the stethoset receiver and the transmitter.	–
	The signal is shielded.	Remove obstacles between the transmitter and the stethoset receiver.	–
	There are interfering devices (e.g. WiFi router, Bluetooth devices or microwaves) in the vicinity.	Change the position of the transmitter or of the receiver. Separate the transmitter from other wireless devices by at least 50 cm/20".	6

Problem	Possible cause	Possible solution	Page
Sound too low	The volume on the stethoset receiver is adjusted to low.	Increase the volume on the stethoset receiver.	16
	The volume of the analog audio source is adjusted to low.	Increase the volume of the analog audio source to at least a medium level (approx. $1 V_{\text{rms}}$).	–
Sound only on one ear	The balance is misadjusted.	Adjust the balance.	17
	The audio cable is not properly connected.	Check the audio plug connection.	6
	The TV has only a mono headphone socket	Use an adapter (mono to stereo jack socket) to connect the transmitter to the TV.	–
Sound is distorted	The audio cable is defective.	Replace the audio cable.	–
	The signal of the audio source is distorted.	Reduce the volume of the audio source.	–
	The volume on the stethoset receiver is adjusted to high.	Reduce the volume on the stethoset receiver.	16
You hear echoes when using the stethoset receiver with a TV	Some TVs can adjust a delay or latency of the audio signal for the digital audio output.	Check the audio output settings of your TV and set the latency to "0".	–
Battery status/charge status display goes off	The battery status display is set so that it goes off after 30 seconds.	Set the battery status display so that it is permanently displayed.	25
	More than one stethoset receiver is currently connected to the transmitter.	This function is only possible when only one stethoset receiver/receiver is connected to the transmitter.	–
2 beeps during operation	The rechargeable battery is almost empty.	Recharge the rechargeable battery.	11
Operating time decreases	The rechargeable battery is exhausted.	Have the rechargeable battery replaced by an authorized Sennheiser service partner.	23
A hearing profile or the balance cannot be activated or changed	The hearing profile and balance protection is activated.	Deactivate the hearing profile and balance protection.	27
	More than one stethoset receiver is currently connected to the transmitter.	This function is only possible when only one stethoset receiver/receiver is connected to the transmitter.	–

EN

DE

FR

ES

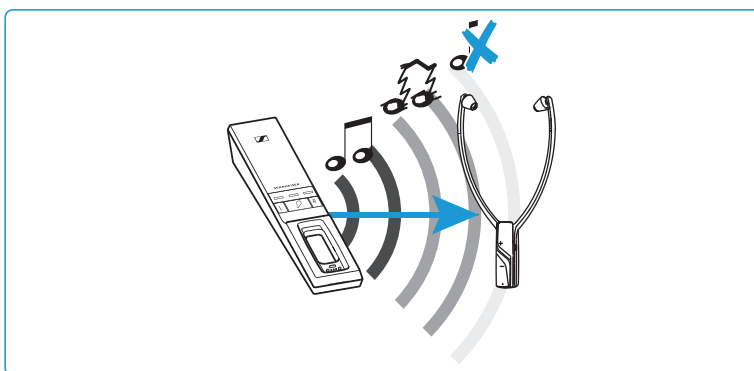
EN If a problem occurs ...

Problem	Possible cause	Possible solution	Page
Stethoset receiver does not connect to the transmitter	The stethoset receiver is not paired with the transmitter.	Pair the stethoset receiver with the transmitter.	24
	The distance to the transmitter is too large.	Reduce the distance between the stethoset receiver and the transmitter.	–
	4 stethoset receivers are currently connected to the transmitter.	Up to 4 stethoset receivers/receivers can be simultaneously used with the transmitter.	–

If a problem occurs that is not listed in the above table or if the problem cannot be solved with the proposed solutions, visit the RS 5000 product page at www.sennheiser.com for the most up-to-date list of frequently asked questions.

You may also contact your local Sennheiser partner for assistance. To find a Sennheiser partner in your country, search at www.sennheiser.com.

Leaving the range of the transmitter



The range of the transmitter largely depends on environmental conditions such as wall thickness, wall composition etc. If the headphones leave the range of the transmitter, the audio first cuts out occasionally until it finally cuts out completely. You hear alerts in the stethoset receiver and the *Receiver status* LED flashes green (or red if the rechargeable battery is almost empty).

If you re-enter the transmission range within 5 minutes, the connection is automatically re-established.

If you spend more than 5 minutes outside the transmission range, the stethoset receiver switches off automatically.

Specifications

RS 5000 system

Carrier frequency	2.40 to 2.48 GHz
Modulation	8-FSK Digital
Signal-to-noise ratio	analog input: typ. 85 dBA at 1 V _{rms} digital input: > 90 dBA
RF output power	max. 10 dBm Class 1
Audio latency	< 60 ms
Range	up to 70 m (line of sight)
Number of stethoset receivers that can be simultaneously connected to the transmitter	4
Temperature range	operation: 5 °C to +40 °C storage: -25 °C to +70 °C
Relative air humidity (non-condensing)	operation: 10 to 80 % storage: 10 to 90 %

RR 5000 stethoset receiver

Type	intra-aural, closed
Transducer principle	dynamic, neodymium magnets
Ear pad material	silicone
Frequency response	15 Hz to 15 kHz
Sound pressure level	125 dB at 1 kHz, 1 V _{rms}
THD	< 0.5 % at 1 kHz, 100 dB SPL
Operating time	up to 12 hours
Charging time of rechargeable battery	up to 3 hours
Power supply	built-in lithium polymer rechargeable battery BAP 800, 3.7 V, 350 mAh
Weight (incl. rechargeable battery)	approx. 61 g
Dimensions (switched off, W x H x D)	approx. 102 x 265 x 23 mm

EN

DE

FR

ES

EN Specifications

TR 5000 transmitter

Connections

digital input: optical
supported data streams:
PCM, 16 - 96 kHz/16 - 24 bit

Power supply

analog input: 3.5 mm jack socket
input voltage range:
0.15 to 4.0 V_{pk}

Power consumption

5 V $\overline{---}$, 1 A
operation: typ. 4 W
standby: \leq 0.5 W (without charging)

Dimensions (W x H x D)

approx. 50 x 42 x 270 mm

NT 5-10AW power supply unit

Nominal input voltage

100 – 240 V~

Power frequency

50 – 60 Hz

Nominal output voltage

5 V $\overline{---}$

Nominal output current

1 A

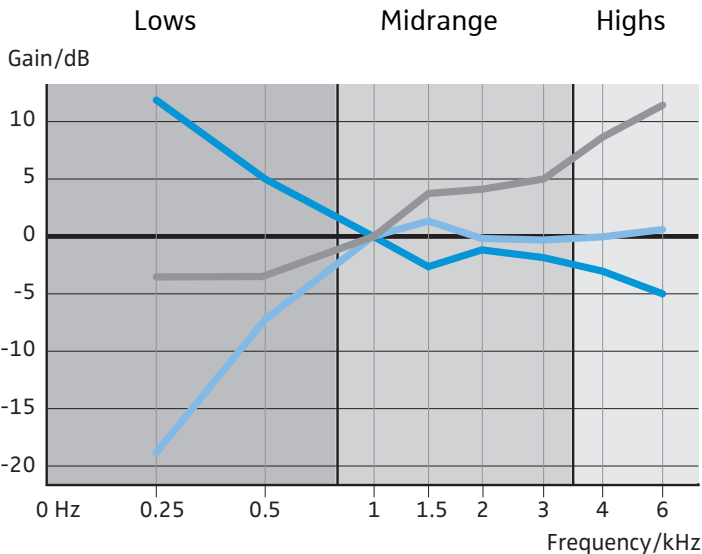
Temperature range

operation: 0 °C to +40 °C
storage: -25 °C to +70 °C

Relative air humidity
(non-condensing)

operation: 10 to 80 %
storage: 10 to 90 %

Hearing profiles 1-3



- Profile 1
- Profile 2
- Profile 3