


# Information on this manual

 This manual describes how to put your RS 5000 into operation and gives an overview of its most important functions. Also observe the safety guide enclosed with the product and the detailed instruction manual which can be downloaded at [www.sennheiser.com/download](http://www.sennheiser.com/download).

## Contents

<b>Information on this manual</b> .....	<b>1</b>
<b>Package contents</b> .....	<b>2</b>
<b>Product overview</b> .....	<b>3</b>
<i>Receiver status</i> LED .....	5
<i>Transmitter status</i> LED .....	5
Overview of the acoustic signals/beeps .....	5
<b>Putting the RS 5000 into operation</b> .....	<b>6</b>
Setting up the transmitter .....	6
Connecting the transmitter to an audio source .....	6
Connecting the transmitter to the mains .....	10
Charging the rechargeable battery .....	11
Displaying the remaining operating time of the rechargeable battery .....	12
Using the charging reminder function .....	13
Selecting the ear pads .....	13
<b>Using the RS 5000</b> .....	<b>14</b>
Switching the wireless headphone system on .....	14
Switching the wireless headphone system off .....	15
Wearing the stethoset receiver .....	15
Adjusting the volume .....	16
Adjusting the balance .....	17
Selecting a hearing profile for sound enhancement .....	18
Activating/deactivating the speech intelligibility function .....	20
<b>Cleaning and maintaining the RS 5000</b> .....	<b>22</b>
Replacing the stethoset receiver's rechargeable battery ...	23
<b>Using additional functions</b> .....	<b>24</b>
Pairing one or several stethoset receivers with the transmitter .....	24
Advanced settings .....	24
Restoring the factory default settings .....	28
<b>If a problem occurs ...</b> .....	<b>30</b>
Leaving the range of the transmitter .....	32
<b>Specifications</b> .....	<b>33</b>

EN

DE

FR

ES

EN Package contents

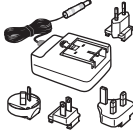
# Package contents



RR 5000 stethoset receiver with built-in rechargeable battery



TR 5000 transmitter with charging station



NT 5-10AW power supply unit with multi-country adapters (EU, UK, US, AU)



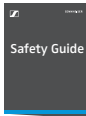
1 pair of ear pads for small ears



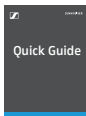
Optical digital cable, 1.5 m



Stereo audio cable with 3.5 mm jack plugs, 1.5 m



Safety guide



Quick guide



Instruction manual in English, German, French, and Spanish

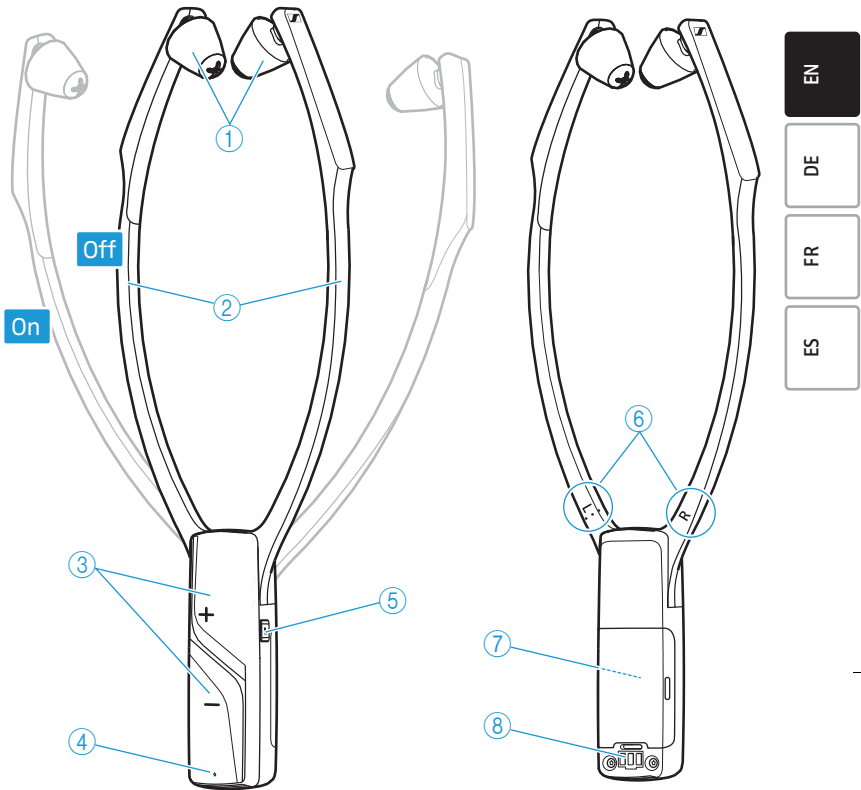
The instruction manual in other languages can be downloaded as a PDF file at [www.sennheiser.com/download](http://www.sennheiser.com/download).



A list of accessories can be found on the RS 5000 product page at [www.sennheiser.com](http://www.sennheiser.com). For information on suppliers, contact your Sennheiser partner. To find a Sennheiser partner in your country, search at [www.sennheiser.com](http://www.sennheiser.com).

# Product overview

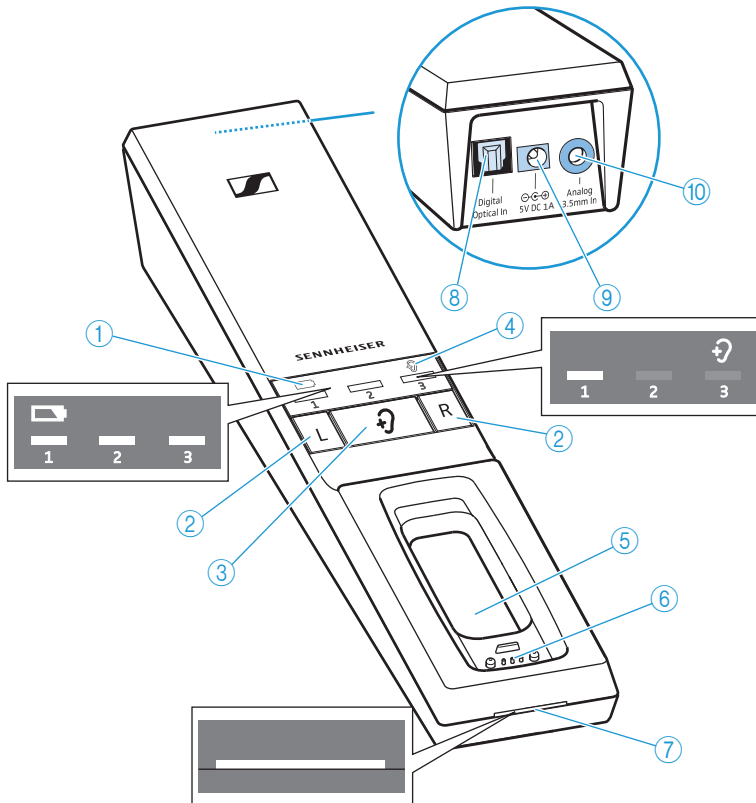
## Overview of the RR 5000 stethoset receiver






- ① Ear pads, replaceable
- ② Ear bows with on/off function
- ③ Volume buttons + and -
- ④ *Receiver status* LED (see page 5)
- ⑤ *Speech intelligibility* button
- ⑥ **R** marking for the right ear and **L** marking for the left ear
- ⑦ Built-in rechargeable battery
- ⑧ Charging contacts

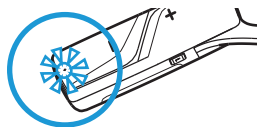
EN Product overview





## Overview of the TR 5000 transmitter



- ① **BatteryLED** ,  
indicating the charging process/remaining operating time  
of the stethoset receiver (see page 11 and 12)
- ② Balance buttons for the right ear **R** and the left ear **L**
- ③ Hearing profile button   
for selecting the hearing profiles (see page 18)
- ④ Hearing profile LED ,  
indicating the activated hearing profile (see page 18)
- ⑤ Charging compartment for stethoset receiver
- ⑥ Charging contacts for stethoset receiver with holding  
magnets
- ⑦ *Transmitter status* LED (see page 5)
- ⑧ **Digital Optical In** audio input (marked pink) for connecting  
a digital audio source (optical)
- ⑨ **5V DC 1A** socket (marked yellow) for connecting the power  
supply unit
- ⑩ **Analog 3.5 mm In** audio input (marked blue) for  
connecting an analog audio source (3.5 mm jack socket)

## Receiver status LED






Receiver status LED	Stethoset receiver...
—	... is switched off.
 lights up green	... is connected to the transmitter.
 lights up red	... is connected to the transmitter, the rechargeable battery is almost empty.
 flashes green	... is not connected to the transmitter or cannot connect to the transmitter.
 flashes red	... is not connected to the transmitter or cannot connect to the transmitter, the rechargeable battery is almost empty.

- EN
- DE
- FR
- ES

## Transmitter status LED



Transmitter status LED	Transmitter...
—	... is in standby mode.
 lights up white	... and stethoset receiver are connected. The speech intelligibility function is deactivated (see page 20).
 lights up blue	... and stethoset receiver are connected. The speech intelligibility function is activated (see page 20).
 flashes blue and white	... has detected an incompatible digital audio signal (see page 7).

## Overview of the acoustic signals/beeps

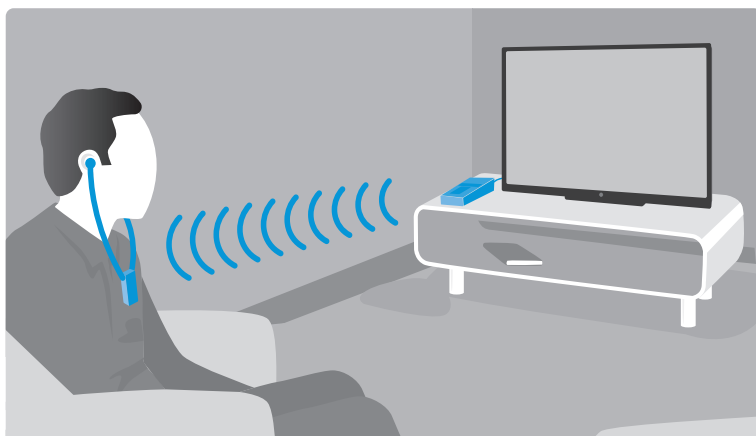
Beeps...	Meaning
during operation, 2 beeps	The rechargeable battery is almost empty, recharge it (see page 11).
during operation, no audio transmission, 5 beeps	The stethoset receiver is outside the transmission range (see page 32).
when changing the volume	The maximum or minimum volume is reached (see page 16).
when changing the balance setting	The maximum or minimum balance setting is reached (see page 17)

EN Putting the RS 5000 into operation

## Putting the RS 5000 into operation

### Setting up the transmitter

- ▶ Choose a suitable place near your sound source.
- ▶ Separate the transmitter from other wireless devices in the room by at least 50 cm/20" to avoid interference.
- ▶ Do not place the transmitter close to metal objects such as shelf bars, reinforced concrete walls, etc. as this can decrease the transmitter's range.



### Connecting the transmitter to an audio source


You can connect the transmitter either to a digital or an analog audio source (e.g. a TV and a stereo hi-fi system).

If you connect an audio source to **both** inputs (digital and analog), only the analog audio source will be reproduced.

**i** You can also refer to the beginner's video guides on how to connect your digital wireless headphone system to a TV: [www.sennheiser.com/how-to-videos](http://www.sennheiser.com/how-to-videos).

- ▶ Switch your audio sources off before connecting the transmitter.
- ▶ Check the connection possibilities of your audio source (audio output, usually marked "OUT").
- ▶ Select the corresponding connection cable and, if necessary, a suitable adapter
- ▶ To connect the transmitter to your audio source, refer to the connection diagram suitable for your audio source (see the following chapters). Follow the color codings on the transmitter and on the cables.

Connection possibilities of the audio source	Color on transmitter	Connection cable	Page
<b>A</b> Optical (digital)	pink	Optical digital cable	7
<b>B</b> 3.5 mm jack socket (analog)	blue	Stereo audio cable	8
<b>C</b> RCA (analog)		Stereo audio cable with RCA adapter (3.5 mm jack socket to 2 RCA connectors; optional accessory)	9
<b>D</b> SCART (analog)		Stereo audio cable with SCART adapter (3.5 mm jack socket to SCART connector; optional accessory)	10

 Accessories and adapters are available from your local Sennheiser partner.

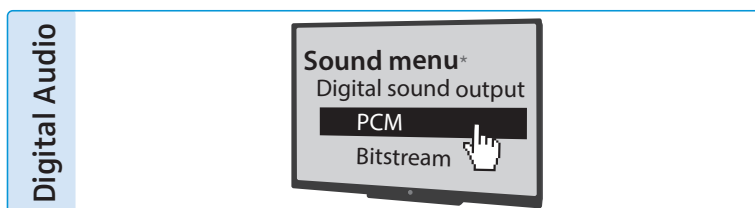
### Connection possibility A: optical (digital)

**A**

To achieve the best possible listening experience, connect the transmitter to your TV or hi-fi system using the supplied optical digital cable.

Note that your wireless headphone system only supports digital signals coded in the **PCM** format. Information on how to set the audio format of the connected audio source to PCM can be found in the Sound menu or in the instruction manual of your device.

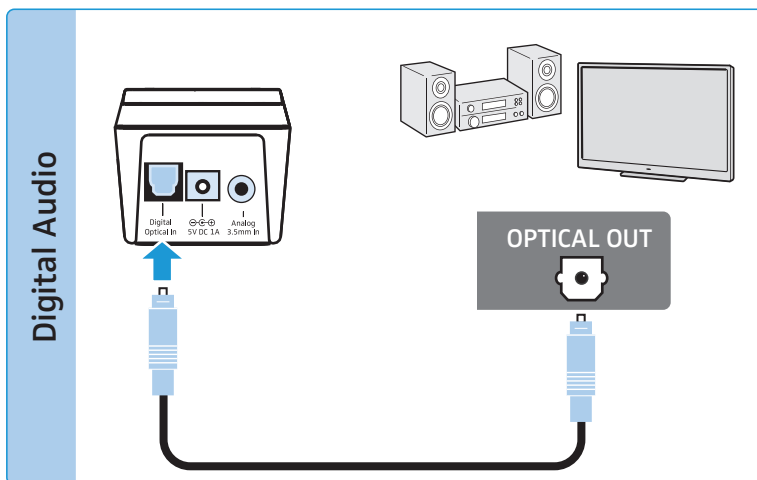
If an incompatible digital audio signal is being received, the *Transmitter status* LED flashes white and blue. Audio cannot be reproduced.



\* The appearance of the Sound menu can vary depending on the device you are using.

## EN Putting the RS 5000 into operation

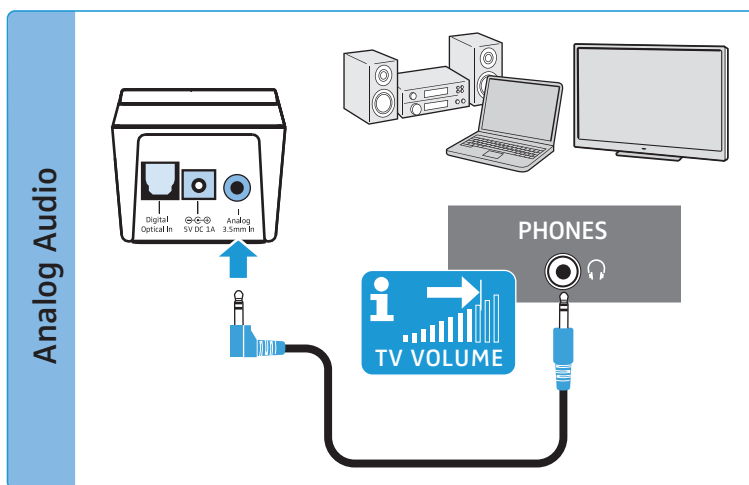
- ▶ Connect the optical digital cable to the pink **Digital Optical In** digital audio input of the transmitter and to the optical output of your audio source.



## Connection possibility B: 3.5 mm jack socket (analog)

B

- ▶ Connect the stereo audio cable to the blue **Analog 3.5 mm In** audio input (3.5 mm jack socket) of the transmitter and to the 3.5 mm headphone socket of your audio source.



- i** Adjust the volume of the headphone socket on your TV/ audio source to at least a medium level.

This improves the quality of wireless audio transmission. For detailed information, please refer to the instruction manual of your TV/audio source.

If the headphones socket on your audio source is a 6.3 mm/ 1/4" jack socket, you require an adapter (3.5 mm jack plug to 6.3 mm/1/4" jack plug, optional accessory) for the supplied 3.5 mm stereo audio cable.



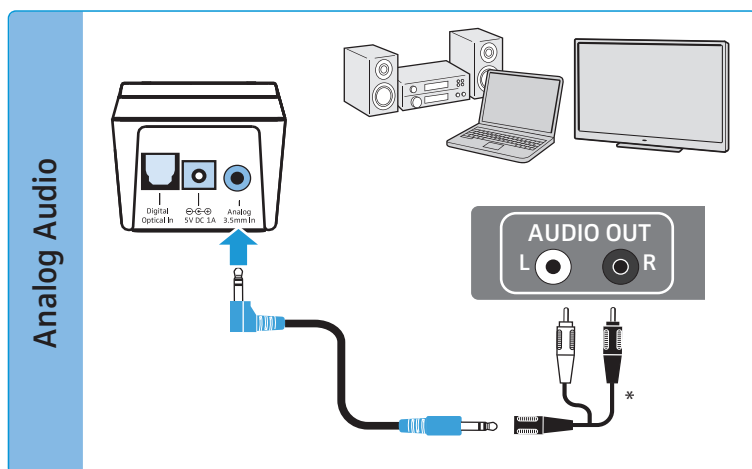
## Putting the RS 5000 into operation EN

Some TV models mute the loudspeakers when you connect the transmitter to the 3.5 mm headphone socket. Other TV models have their own menu for adjusting the volume of the headphone socket. Check the menu of your TV for information on how to deactivate the muting function or adjust the volume. Alternatively, connect the TV and the transmitter using a different connection possibility (A, C or D).

### Connection possibility C: RCA sockets (analog)

C

- ▶ Plug the RCA adapter\* onto the stereo audio cable.
- ▶ Connect the stereo audio cable to the blue 3.5 mm jack socket of the transmitter.
- ▶ Connect the RCA connectors to the RCA sockets (mostly labeled "AUDIO OUT" or  $\ominus \oplus$ ) of your audio source. Connect the red connector to the red RCA socket and the white connector to the white or black RCA socket.



\* optional accessory

EN



DE

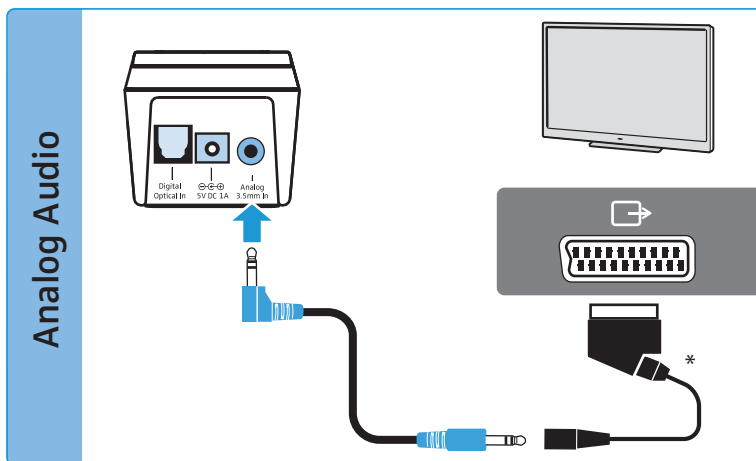
FR

ES

## EN Putting the RS 5000 into operation

**Connection possibility D: SCART socket (analog)****D**

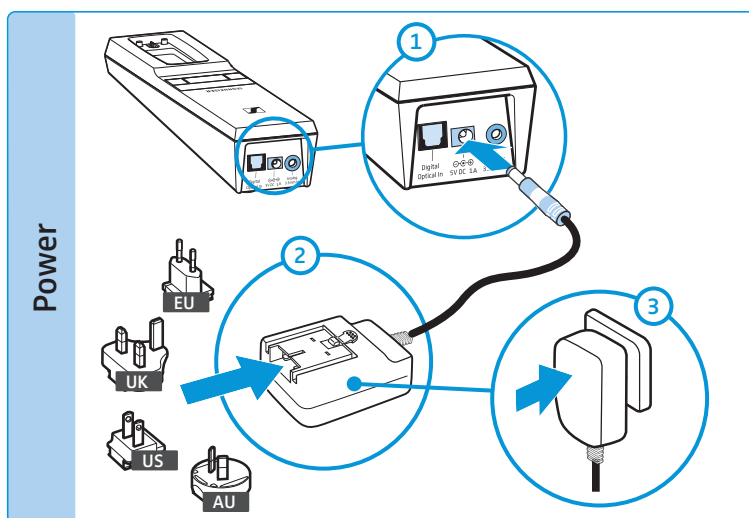
- ▶ Plug the SCART adapter\* onto the stereo audio cable.
- ▶ Connect the stereo audio cable to the blue 3.5 mm jack socket of the transmitter.
- ▶ Connect the SCART connector to the SCART socket (mostly labeled  or ) of your audio source.



\* optional accessory


**Connecting the transmitter to the mains**


- 1 Connect the connector of the power supply unit to the yellow socket of the transmitter.
- 2 Select a suitable country adapter and slide it onto the power supply unit until it clicks audibly into place.
- 3 Plug the power supply unit into the wall socket.  
All LEDs on the transmitter light up for 5 seconds. The transmitter is in standby mode.

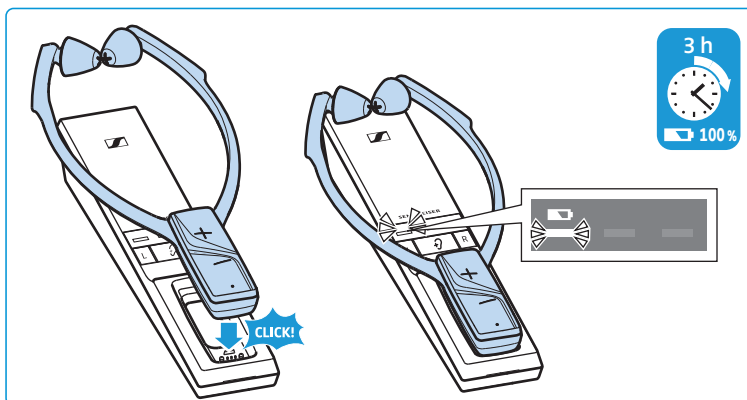





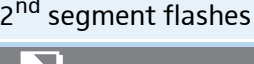
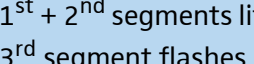
## Charging the rechargeable battery

A complete charging cycle takes **about 3 hours**. Before using the receiver for the first time, charge its rechargeable battery for a complete charging cycle without interruption.

When the rechargeable battery is almost empty, the *Receiver status* LED lights up red and you hear 2 beeps. The *Battery* LED  on the transmitter lights up white. The stethoset receiver switches off after a few minutes.

- ▶ Place the stethoset receiver into the transmitter's charging compartment so that the volume buttons face upwards. The stethoset receiver is magnetically oriented to the correct position. The stethoset receiver automatically switches off and the *Battery* LED  on the transmitter lights up white. The LED segments display the charge status of the rechargeable battery. When the rechargeable battery is fully charged, all LED segments light up white.



BatteryLED 	Meaning
–	Transmitter is not charging.
 1 <sup>st</sup> segment flashes	Rechargeable battery is being charged. Less than 1/3 of the charge capacity is reached.
 1 <sup>st</sup> segment lit, 2 <sup>nd</sup> segment flashes	Rechargeable battery is being charged. Up to 1/3 of the charge capacity is reached.
 1 <sup>st</sup> + 2 <sup>nd</sup> segments lit, 3 <sup>rd</sup> segment flashes	Rechargeable battery is being charged. Up to 2/3 of the charge capacity is reached.
 All segments lit	Rechargeable battery is fully charged.



EN


DE


FR

ES


## EN Putting the RS 5000 into operation






BatteryLED 	Meaning
 <i>BatteryLED flashes rapidly</i>	A charging error/battery error has occurred (see page 23).

 Always store the stethoset receiver in the transmitter's charging compartment to ensure that it is fully charged when needed. The intelligent battery charging technology prevents overcharging.

 The display during charging can be set so that it automatically switches off after 30 seconds (see page 25).


## Displaying the remaining operating time of the rechargeable battery


When you switch the stethoset receiver on, the *BatteryLED*  displays the remaining operating time/charge status.

BatteryLED 	Meaning
 <i>BatteryLED flashes slowly</i>	Rechargeable battery is empty; recharge it
 1 <sup>st</sup> segment lit	approx. 4 hrs of operating time
 1 <sup>st</sup> + 2 <sup>nd</sup> segments lit	approx. 8 hrs of operating time
 All segments lit	approx. 12 hrs of operating time


To indicate that the operating time is decreasing, each LED segment slowly dims before it goes off completely.

If the actual operating time differs widely from the specified values, the rechargeable battery is probably exhausted and should be replaced. Information on the rechargeable battery can be found on page 23.

 The display of the remaining operating time can be set so that it automatically switches off after 30 seconds (see page 25).


 If more than one stethoset receiver is connected to the transmitter, the remaining operating time/charge status cannot be displayed.

## Using the charging reminder function

When the stethoset receiver is switched off and the transmitter automatically switches off (standby mode), the *BatteryLED*  will flash back and forth for 10 minutes to remind you to charge the stethoset receiver.

- ▶ Charge the stethoset receiver by placing it into the transmitter's charging compartment (see page 11).

The LED stops flashing and the charging process starts.

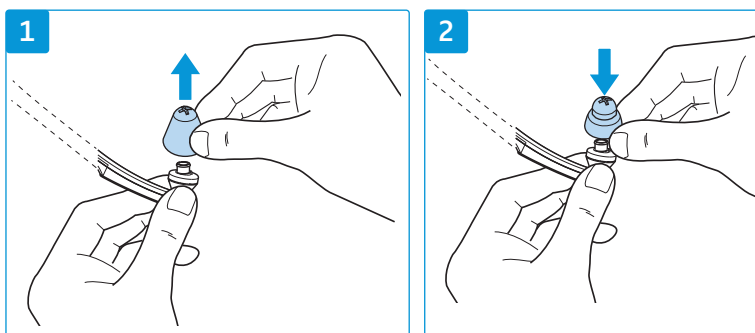
 You can also switch off the charging reminder function (see page 26).


## Selecting the ear pads

You can choose between ear pads for larger and smaller ears (supplied). The stethoset receiver is delivered with the ear pieces for larger ears already attached.

To replace the ear pads:

- 1 Carefully remove the ear pads from the stethoset receiver.
- 2 Put the other ear pads on the stethoset receiver.



 Spare ear pads in different materials and forms are available from your Sennheiser partner.

EN

DE

FR

ES

EN Using the RS 5000

# Using the RS 5000

## Switching the wireless headphone system on



### WARNING

#### Danger of hearing damage due to high volumes!

This stethoset receiver allows you to set higher volumes than conventional devices. Constant high-volume use can cause hearing damage.

- ▶ Before putting the stethoset receiver on, set the volume on the receiver to a low level.
- ▶ Do not expose yourself to high volume levels for extended periods of time.
- ▶ Use a hearing profile (see page 18) that improves especially speech intelligibility without the need for a high volume.

### 1 Switch your audio source on.

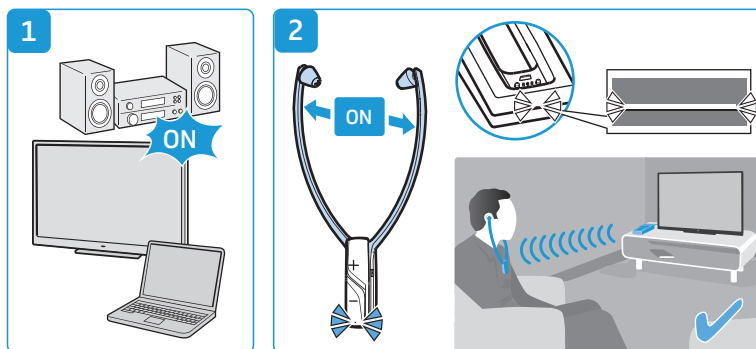
If the transmitter is connected to the headphone socket (see page 8) of your TV/audio source, adjust the volume of the headphone socket on your TV/audio source to at least a medium level.



### 2 Take the stethoset receiver out of the transmitter's charging compartment and pull the ear bows apart so that you can put the receiver on.

The stethoset receiver automatically switches on when you pull the ear bows apart. The *Receiver status* LED lights up green. The transmitter automatically switches on and the *Transmitter status* LED lights up white or blue. The audio transmission starts.

The remaining operating time of the stethoset receiver is displayed on the transmitter (see page 12).



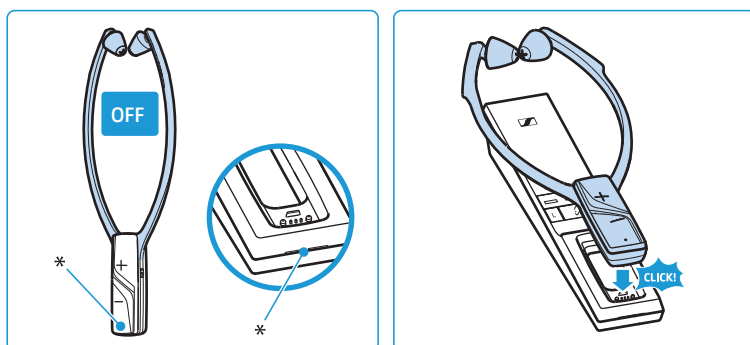
## Switching the wireless headphone system off

- ▶ Take the stethoset receiver off so that the ear bows fold inwards.

The stethoset receiver automatically switches off after 20 seconds. The *Receiver status* LED goes off. The transmitter automatically switches off (standby) when there is no stethoset receiver connected. The *Transmitter status* LED goes off.

- ▶ Always store the stethoset receiver in the transmitter's charging compartment to ensure that it is fully charged when needed.

The charging process starts (see page 11).



\* LED goes off

**i** If the stethoset receiver is outside the transmission range for more than 5 minutes or if the transmitter receives no audio signal for more than 30 minutes, the wireless headphone system switches off automatically (standby).

To disconnect the transmitter from the power supply system (e.g. when you are on holiday):

- ▶ Unplug the power supply unit from the wall socket.

## Wearing the stethoset receiver

- ▶ Wear the stethoset receiver so that it hangs freely from your ears and rests lightly on your chest. When putting the stethoset receiver on, observe the **L** (left) and **R** (right) markings on the rear of the ear bows. The volume buttons face away from your body to facilitate ease of use.
- ▶ Wear the stethoset receiver so that
  - the ear pads are positioned just in front of your ear canals.

EN

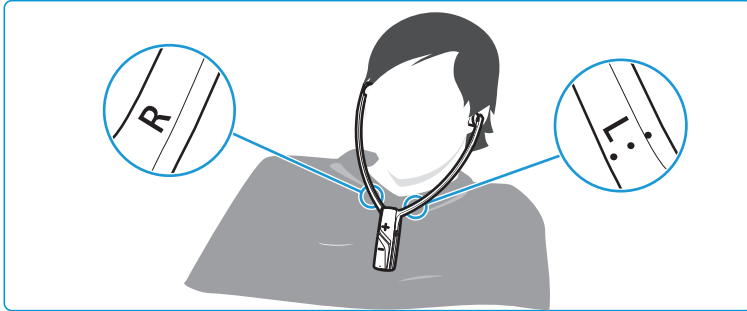
DE

FR

ES

## EN Using the RS 5000

- you feel a gentle pressure on your ears. The ear pads adapt to your ear form. If you find the ear pads uncomfortable, try the ear pads for smaller ears (Package contents, see page 13)
- the stethoset receiver hangs freely from your ears and rests lightly on your chest.



**i** Spare ear pads in different materials and forms are available from your Sennheiser partner.

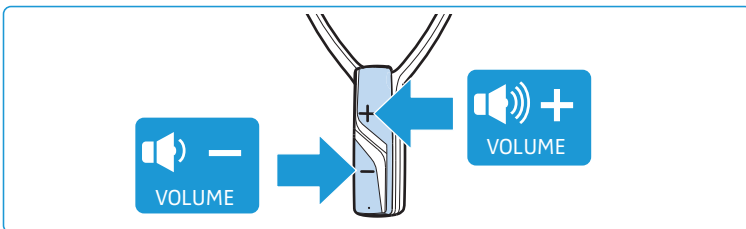
## Adjusting the volume



### WARNING

**Danger of hearing damage due to high volumes!**

- ▶ Before putting the stethoset receiver on, set the volume on the receiver to a low level.
  - ▶ Do not expose yourself to high volume levels for extended periods of time.
- 
- ▶ Press the volume button + or the volume button – until the volume is adjusted to a comfortable level. When the minimum or maximum volume is reached, you hear a beep in the stethoset receiver.



**i** If you have set a very high volume level and switch the stethoset receiver off and on again, the volume is reset to a moderate level to protect your hearing.



## Adjusting the balance

The Balance buttons allow for left/right volume adjustment. Adjust the balance so that you hear equally well with both ears.

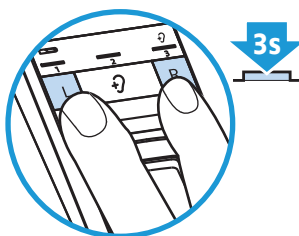
**i** The balance setting is stored on the stethoset receiver. If you are using several receivers with a transmitter, the respective receivers are optimally adjusted to match the personal hearing preferences of the users (e.g. you and your partner). Please note that the personal hearing preferences can only be adjusted when only stethoset receiver is connected to the transmitter.

- ▶ Press the balance button **R** (right) or **L** (left) on the transmitter to gradually increase or reduce the volume for your right or left ear. When the minimum or maximum balance setting is reached, you hear a beep in the stethoset receiver.



To reset the balance setting to the middle setting:

- ▶ Simultaneously press the balance buttons **R** (right) and **L** (left) on the transmitter for 3 seconds.



**i** To prevent accidental adjustment of the balance setting, you can activate the balance protection (see page 27).



EN Using the RS 5000

## Selecting a hearing profile for sound enhancement

The hearing profiles alter the sound of the audio signal in order to especially improve the speech intelligibility. The profiles are used to specifically change certain frequency ranges by e.g. boosting or attenuating low-frequency or high-frequency tones.

All three hearing profiles feature a compression function which compensates for volume differences by boosting the volume of quiet passages and reducing the volume of loud passages if necessary.

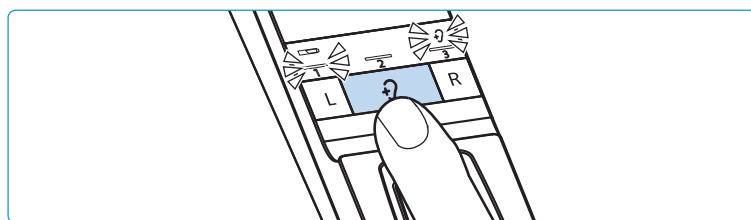
**i** The balance setting is saved on the stethoset receiver. If you are using several receivers with a transmitter, the respective receivers are optimally adjusted to match the personal hearing preferences of the users (e.g. you and your partner). Please note that the personal hearing preferences can only be adjusted when only stethoset receiver is connected to the transmitter.

### Displaying the activated hearing profile





The activated hearing profile is not permanently displayed.

To check the activate hearing profile:

- ▶ Switch the stethoset receiver on by putting it on.
- ▶ Briefly press the Hearing profile button on the transmitter. The currently activated hearing profile is displayed for 10 seconds.



Profile	Hearing profile LED	Meaning	Compression
–	 No segment lit	The sound from the connected audio source is reproduced unchanged.	no

Profile	Hearing profile LED 	Meaning	Compression
Hearing profile 1	 1 <sup>st</sup> segment lit	Low-frequency tones are slightly boosted to provide a warm, full sound. High-frequency tones are reproduced less piercing and clanking.	yes
Hearing profile 2	 2 <sup>nd</sup> segment lit	High-frequency tones are strongly boosted to provide a crystal-clear sound, especially for sibilants and high-frequency tones such as twittering of birds.	yes
Hearing profile 3	 3 <sup>rd</sup> segment lit	Low-frequency tones are attenuated so that they cannot mask high-frequency tones.	yes

EN

DE

FR

ES

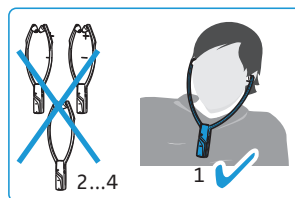
### Selecting a hearing profile

To select the hearing profile that best suits you, proceed as follows:

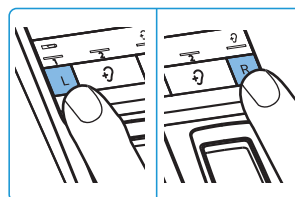
- 1 Switch your audio source on and select a program where speech is foregrounded.



- 2 Put the stethoset receiver on and make sure that only this receiver is connected to the transmitter. Otherwise, a hearing profile cannot be adjusted.

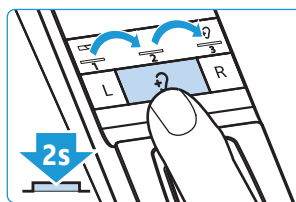


- 3 Use the L and R buttons on the transmitter to adjust the balance (see page 17). This ensures that each subsequently selected hearing profile is perfectly matched to your left/right balance setting.



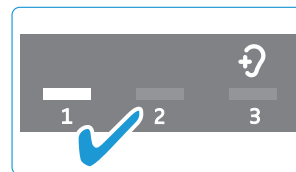
## EN Using the RS 5000

- 4 Press the Hearing profile button on the transmitter for 2 seconds to select the next hearing profile. Press the Hearing profile button again for 2 seconds to switch to the next hearing profile.



- 5 Test which of the hearing profiles (1, 2 or 3) gives you the best sound quality and helps you to hear best.

Your individual hearing profile is adjusted and saved on the stethoset receiver.



- i** Since your level of hearing impairment may change over time, we recommend that you repeat the selection of the hearing profile from time to time.
- i** If you switch to the next hearing profile, the speech intelligibility function is automatically deactivated so that you can hear the hearing profile unchanged (see page 20).
- i** To prevent accidental adjustment of the hearing profile settings, you can activate the hearing profile and balance protection (see page 27).

## Activating/deactivating the speech intelligibility function

When speech is mixed with annoying background noise, speech may be difficult to understand.

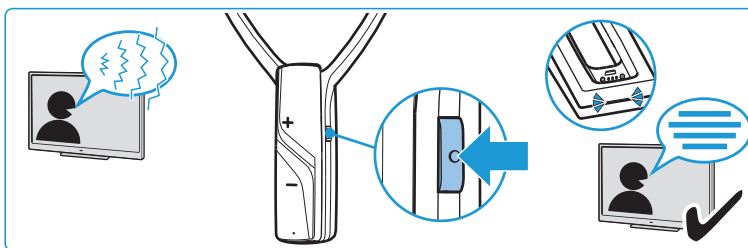
The speech intelligibility function automatically detects and reduces annoying background noise. The audio signal is permanently analyzed and adjusted accordingly so speech is foregrounded and easier to understand.

### Application examples

Application	Speech intelligibility function	Advantage
TV motion pictures, TV series or audio books	activated	Dialogs muffled by background music and noise are easier to understand.

Application	Speech intelligibility function	Advantage
Sportscasts	activated	The presentation muffled by background noise in the stadium is easier to understand.
Music	deactivated	No speech, the speech intelligibility function is not needed.

► Press the *Speech intelligibility* button to activate or deactivate the function.



Transmitter status LED	Speech intelligibility function
lights up blue	activated; Annoying background noise is effectively reduced, speech becomes clearer and easier to understand.
lights up white	deactivated

**i** The speech intelligibility function can also be used in addition to one of the hearing profiles 1-3.

EN

DE

FR

ES

EN Cleaning and maintaining the RS 5000

# Cleaning and maintaining the RS 5000

## CAUTION

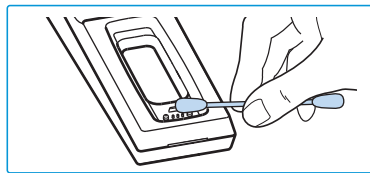
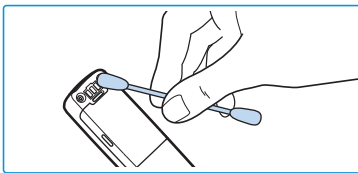
**Liquids can damage the electronics of the product!**

Liquids entering the housing of the product can cause a short-circuit and damage the electronics.

- ▶ Keep all liquids far away from the product.
- ▶ Do not use any solvents or cleansing agents.

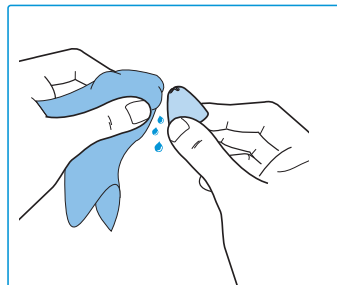
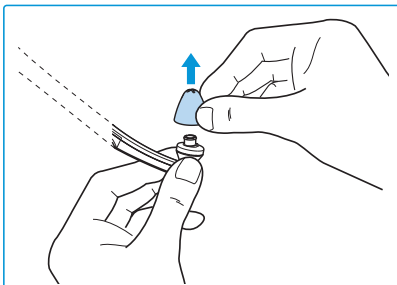
To clean the wireless headphone system:

- ▶ Switch your wireless headphone system off and disconnect the transmitter from the socket before cleaning.
- ▶ Clean the product only with a soft, dry cloth.
- ▶ Clean the charging contacts on the stethoset receiver and in the charging compartment from time to time using e.g. a cotton swab.



To clean the ear pads:

- ▶ Carefully remove the ear pads from the stethoset receiver.
- ▶ Clean the ear pads with warm soapy water and rinse thoroughly.
- ▶ Dry the ear pads.
- ▶ Put the ear pads back on the stethoset receiver.



**i** For reasons of hygiene, you should replace your ear pads from time to time. Spare ear pads in different materials and forms are available from your Sennheiser partner.

## Replacing the stethoset receiver's rechargeable battery

The BAP 800 rechargeable battery of the stethoset receiver is compactly built into the receiver housing and does not have to be replaced or removed.

If the operating time of the stethoset receiver decreases drastically or if a charging error is displayed during charging (see page 11), the rechargeable battery may be exhausted or defective and has to be replaced.

### CAUTION

#### **Danger of damage to the product!**

During the warranty period, the rechargeable batteries must only be replaced or removed by an authorized Sennheiser service partner, otherwise the warranty will be null and void.

► Contact your Sennheiser service partner if the rechargeable batteries need to be replaced or removed.

Outside the warranty period, the rechargeable batteries may be replaced or removed by any qualified service center in an appropriate manner.

You need suitable tools for replacement. We therefore recommend to have the rechargeable battery replaced by your Sennheiser service partner. To find a Sennheiser service partner in your country, search at [www.sennheiser.com](http://www.sennheiser.com).

EN

DE

FR

ES