



SENNHEISER



RS 2000

Wireless TV headphones

Instruction manual

Contents

Important safety instructions	3
Package contents	6
Product overview	7
Putting the RS 2000 into operation	9
Setting up the transmitter	9
Connecting the transmitter to an audio source	10
Connecting the transmitter to the power supply system	13
Charging the stethoset receiver's rechargeable battery	14
Using the RS 2000	15
Switching the wireless headphone system on	15
Switching the wireless headphone system off	16
Wearing the stethoset receiver	17
Adjusting the volume	17
Adjusting the balance	18
Cleaning and maintaining the RS 2000	19
Replacing the stethoset receiver's rechargeable battery	20
Using additional functions	21
Pairing one or several stethoset receivers with the transmitter	21
Charging the rechargeable battery using the MCA 800 charging adapter	22
If a problem occurs	23
Leaving the range of the transmitter	24
Specifications	25
Manufacturer Declarations	27

Important safety instructions



- ▶ Read this instruction manual carefully and completely before using the product.
- ▶ Always include this instruction manual when passing the product on to third parties.
- ▶ Do not use an obviously defective product.
- ▶ Only use the product in environments where wireless 2.4 GHz transmission is permitted.

Preventing damage to health and accidents



- ▶ These headphones allow you to set higher volumes than conventional headphones. Protect your hearing from high volume levels.
Permanent hearing damage may occur when headphones are used at high volume levels for long periods of time. Sennheiser headphones sound exceptionally good and provide clear speech intelligibility at low and medium volume levels.
- ▶ To prevent hearing damage, set the volume to a low level before passing the product on to third parties.
- ▶ Do not use the product in an environment that requires your special attention (e.g. in traffic or when performing skilled jobs).
- ▶ Always keep the headphones/MCA 800 charging adapter at least 3.94" (10 cm) from cardiac pacemakers or implanted defibrillators. The headphones/MCA 800 charging adapter contain/s magnets that generate a magnetic field which could cause interference with cardiac pacemakers and implanted defibrillators.
- ▶ Do not use the product near water. To reduce the risk of fire or electric shock, do not expose the product to rain or moisture.
- ▶ Keep the product, accessories and packaging parts out of reach of children and pets to prevent accidents and choking hazards.
- ▶ Only use the power supply units supplied by Sennheiser.

Preventing damage to the product and malfunctions

- ▶ Always keep the product dry and do not expose it to extreme temperatures to avoid corrosion or deformation. The normal operating temperature is from 5 to 40 °C/41 to 104 °F.
- ▶ Use the product with care and store it in a clean, dust-free environment.
- ▶ Switch off the product after use to conserve battery power.
- ▶ Unplug the power supply unit from the wall socket
 - to completely disconnect the product from the power source,
 - during lightning storms or
 - when not using the product for long periods of time.

- ▶ Always ensure that the power supply unit is
 - in a safe operating condition and easily accessible,
 - properly plugged into the wall socket,
 - only operated within the permissible temperature range,
 - not exposed to direct sunlight for longer periods of time in order to prevent heat accumulation.
- ▶ Varnish or furniture polish may degrade the feet of the transmitter, which could stain your furniture. You should therefore place the transmitter on a non-slip pad to avoid potential staining of furniture.
- ▶ Do not operate the product near heat sources.
- ▶ Clean the product only with a soft, dry cloth.
- ▶ Use only attachments/accessories/spare parts supplied or recommended by Sennheiser.

Safety instructions for lithium polymer rechargeable batteries



WARNING

If abused or misused, the standard/rechargeable batteries may leak. In extreme cases, they may even present a risk of

- explosion,
- fire development,
- heat generation,
- smoke or gas development.



Switch rechargeable battery-powered products off after use.



Do not charge a product with a built-in rechargeable battery if the product is obviously defective.



Only use rechargeable batteries and chargers recommended by Sennheiser.



Only charge rechargeable batteries at ambient temperatures between 5 to 45 °C/41 to 113 °F.



When not using rechargeable batteries for extended periods of time, charge them regularly (about every three months).



Do not heat above 70 °C/158 °F, e.g. do not expose to sunlight or throw into a fire.



Dispose of batteries/rechargeable batteries at special collection points or return them to your specialist dealer.

Intended use/Liability

This wireless TV headphone system is suitable for use with TV sets, hi-fi systems, and home cinema systems and can be connected to an analog audio source.

This product is intended for private domestic use only. It is not suitable for commercial use. This product is also not intended to be used with portable audio devices.

It is considered improper use when the product is used for any application not named in the corresponding product documentation.

Sennheiser does not accept liability for damage arising from abuse or misuse of this product and its attachments/accessories.

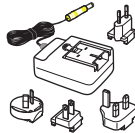
Package contents



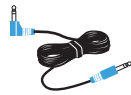
RR 2000 stethoset receiver with built-in rechargeable battery



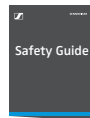
TR 2000 transmitter with charging station



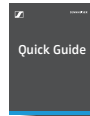
NT 5-10AW power supply unit with multi-country adapters (EU, UK, US, AU)



Stereo audio cable with 3.5 mm jack plugs, 1.5 m



Safety guide



Quick guide



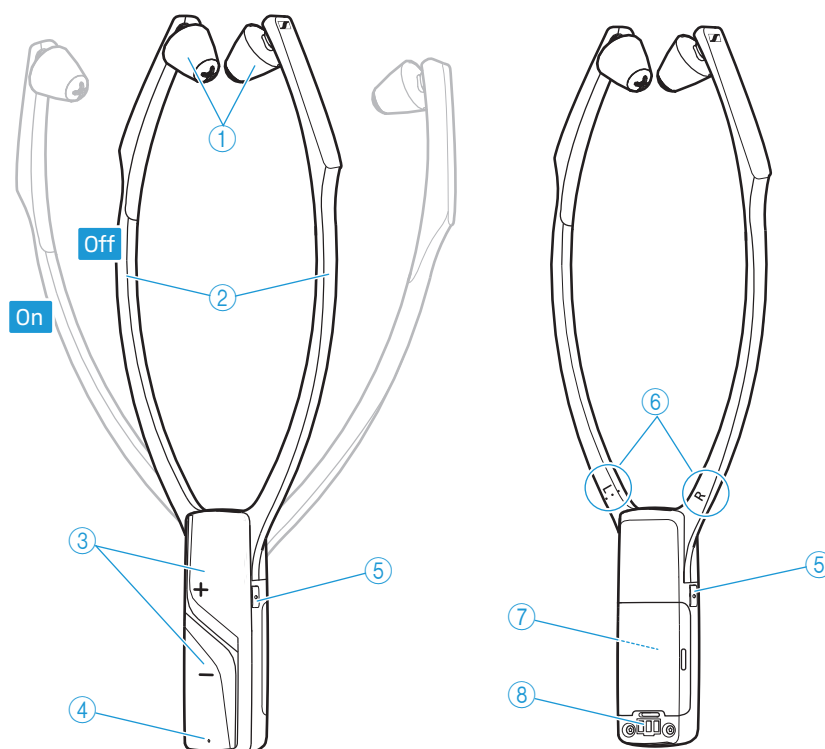
The instruction manual can be downloaded as a PDF file at www.sennheiser.com/download.



A list of accessories can be found on the RS 2000 product page at www.sennheiser.com. For information on suppliers, contact your Sennheiser partner. To find a Sennheiser partner in your country, search at www.sennheiser.com.

Product overview

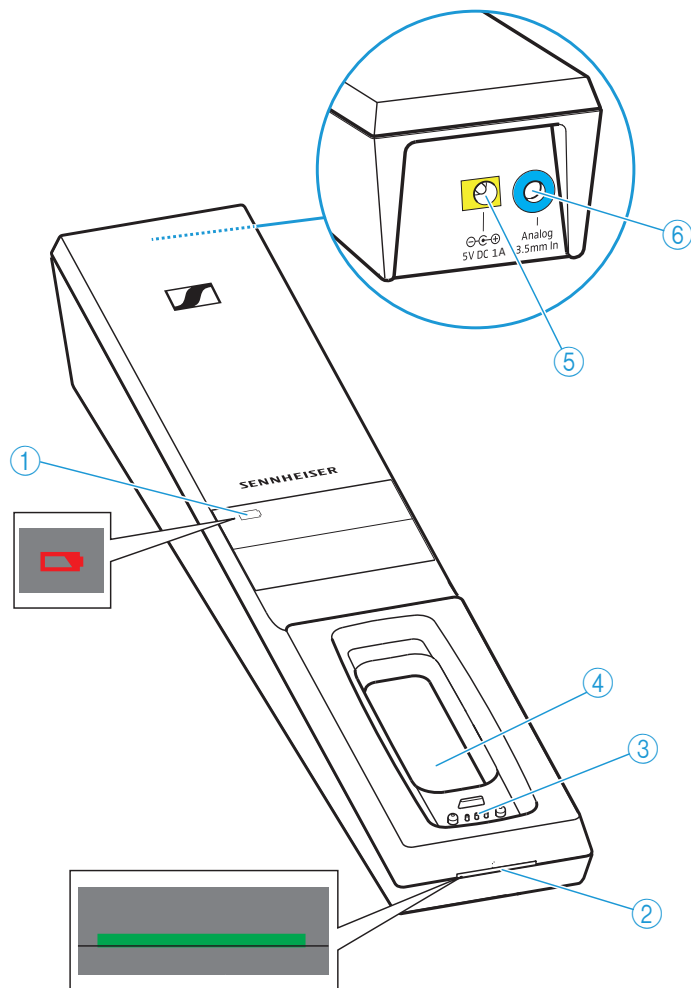
Overview of the RR 2000 stethoset receiver




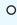

- ① Ear pads, replaceable
- ② Ear bows with on/off function
- ③ Volume buttons
+ and -
- ④ *Receiver status* LED
(see below)
- ⑤ *Balance* buttons for the right and left ear
- ⑥ R marking for the right ear and L marking for the left ear
- ⑦ Built-in rechargeable battery
- ⑧ Charging contacts

<i>Receiver status</i> LED	The stethoset receiver ...
○ ----- is switched off.
⊗ ----- is connected to the transmitter.
⊗ ----- is connected to the transmitter, the rechargeable battery is almost empty.
⊗ ○ ○ ○ ○ ⊗ ○ ○ ○ ○ ----- 1s ----- 1s is not connected to the transmitter or cannot connect to the transmitter.
⊗ ○ ○ ○ ○ ⊗ ○ ○ ○ ○ ----- 1s ----- 1s is not connected to the transmitter or cannot connect to the transmitter, the rechargeable battery is almost empty.

Overview of the TR 2000 transmitter



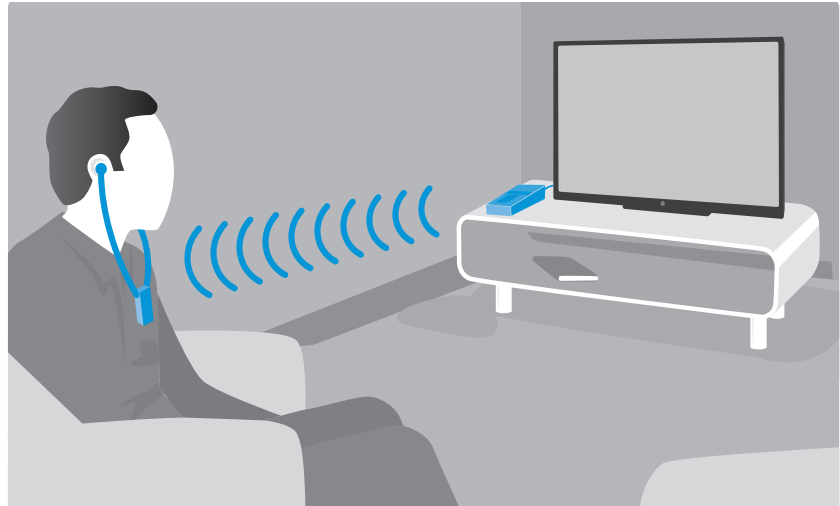
- ① **Battery LED**  (see page 14)
- ② **Transmitter status LED** (see below)
- ③ Charging contacts for stetho- set receiver with holding magnets
- ④ Charging compartment for stetho- set receiver
- ⑤ **DC 5V 1A** socket for the power supply unit, marked yellow
- ⑥ **Analog 3.5 mm In** analog audio input (3.5 mm jack socket), marked blue

<i>Transmitter status LED</i>	The transmitter...
 ┌───────────────────┐ is in standby mode.
 ┌───────────────────┐ and the stetho- set receiver are connected.

Putting the RS 2000 into operation


Setting up the transmitter

- ▶ Choose a suitable place near your sound source.
- ▶ Separate the transmitter from other wireless devices in the room by at least 50 cm/20" to avoid interference.
- ▶ Do not place the transmitter close to metal objects such as shelf bars, reinforced concrete walls, etc. as this can decrease the transmitter's range.










Connecting the transmitter to an audio source

You can connect the transmitter to an analog audio source (e.g. a TV or a stereo hi-fi system).

 You can also refer to the beginner's video guides on how to connect your digital wireless headphone system to a TV: www.sennheiser.com/how-to-videos.

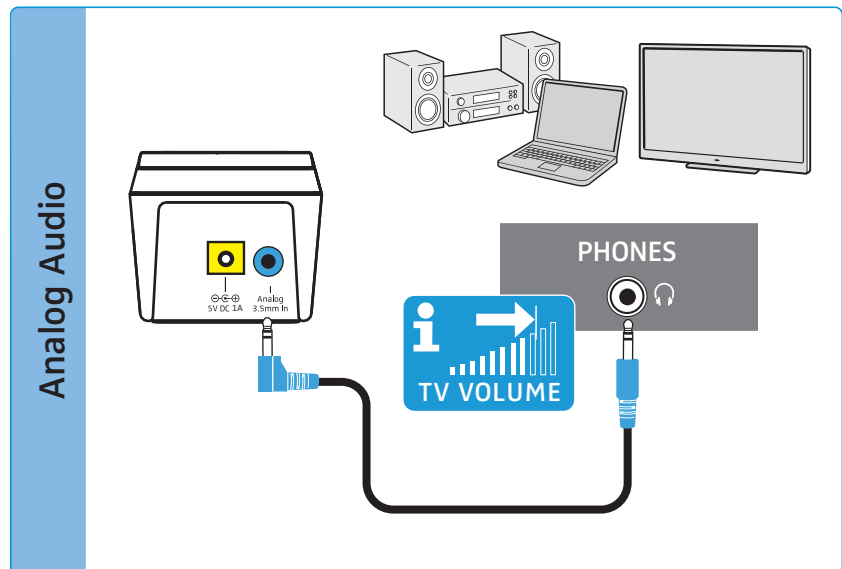
- ▶ Switch your audio sources off before connecting the transmitter.
- ▶ Check the connection possibilities of your audio source (audio output, usually marked "OUT").
- ▶ Select the corresponding connection cable and, if necessary, a suitable adapter
- ▶ To connect the transmitter to your audio source, refer to the connection diagram suitable for your audio source (see the following chapters). Follow the color codings on the transmitter and on the cables.

Connection possibilities of the audio source			Color coding on the transmitter	Connection cable	Page
A	3.5 mm jack socket (analog)			Stereo audio cable	11
B	RCA (analog)			Stereo audio cable with RCA adapter (3.5 mm jack socket to 2 RCA plugs; optional accessory)	12
C	SCART (analog)			Stereo audio cable with SCART adapter (3.5 mm jack socket to SCART connector; optional accessory)	12

 Accessories and adapters are available from your local Sennheiser partner.

A Connection possibility A: 3.5 mm jack socket (analog)

- ▶ Connect the stereo audio cable to the blue **Analog 3.5 mm In** audio input (3.5 mm jack socket) of the transmitter and to the 3.5 mm headphone socket of your audio source.



- i** Adjust the volume of the headphone socket on your TV/audio source to at least a medium level.

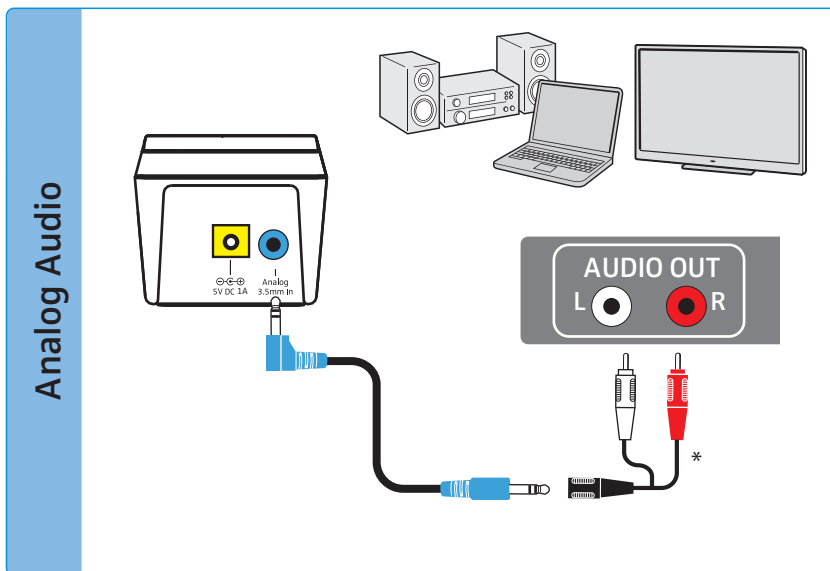
This improves the quality of wireless audio transmission. For detailed information, please refer to the instruction manual of your TV/audio source.

If the headphones socket on your audio source is a 6.3 mm/1/4" jack socket, you require an adapter (3.5 mm jack plug to 6.3 mm/1/4" jack plug, optional accessory) for the supplied 3.5 mm stereo audio cable.

Some TV models mute the loudspeakers when you connect the transmitter to the 3.5 mm headphone socket. Other TV models have their own menu for adjusting the volume of the headphone socket. Check the menu of your TV for information on how to deactivate the muting function or adjust the volume. Alternatively, connect the TV and the transmitter using a different connection possibility (B or C).

B Connection possibility B: RCA sockets (analog)

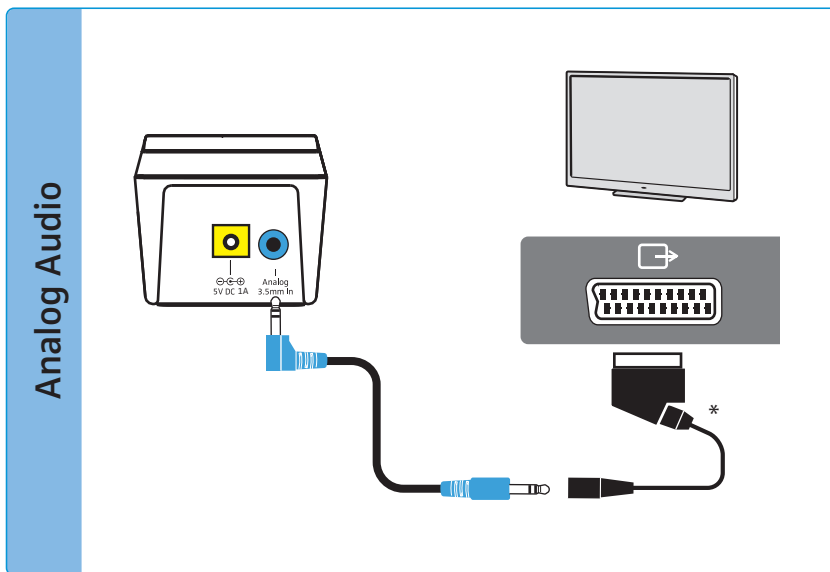
- ▶ Plug the RCA adapter* onto the stereo audio cable.
- ▶ Connect the stereo audio cable to the blue 3.5 mm jack socket of the transmitter.
- ▶ Connect the RCA connectors to the RCA sockets (mostly labeled "AUDIO OUT" or ↔) of your audio source. Connect the red connector to the red RCA socket and the white connector to the white or black RCA socket.



* optional accessory

C Connection possibility C: SCART socket (analog)

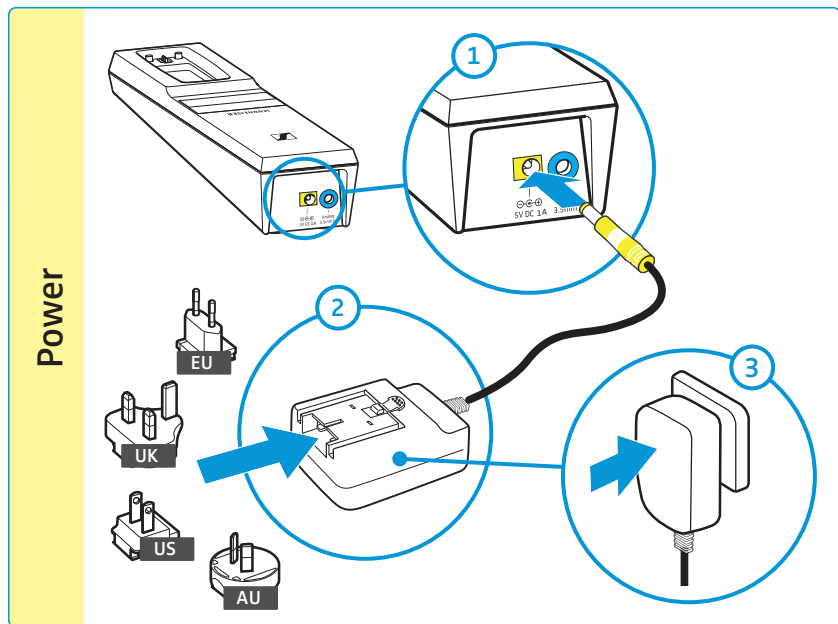
- ▶ Plug the SCART adapter* onto the stereo audio cable.
- ▶ Connect the stereo audio cable to the blue 3.5 mm jack socket of the transmitter.
- ▶ Connect the SCART connector to the SCART socket (mostly labeled ↔ or →) of your audio source.



* optional accessory

Connecting the transmitter to the power supply system

- 1 Connect the connector of the power supply unit to the yellow socket of the transmitter.
- 2 Select a suitable country adapter and slide it onto the power supply unit until it clicks audibly into place.
- 3 Plug the power supply unit into the wall socket. The transmitter is in standby mode.





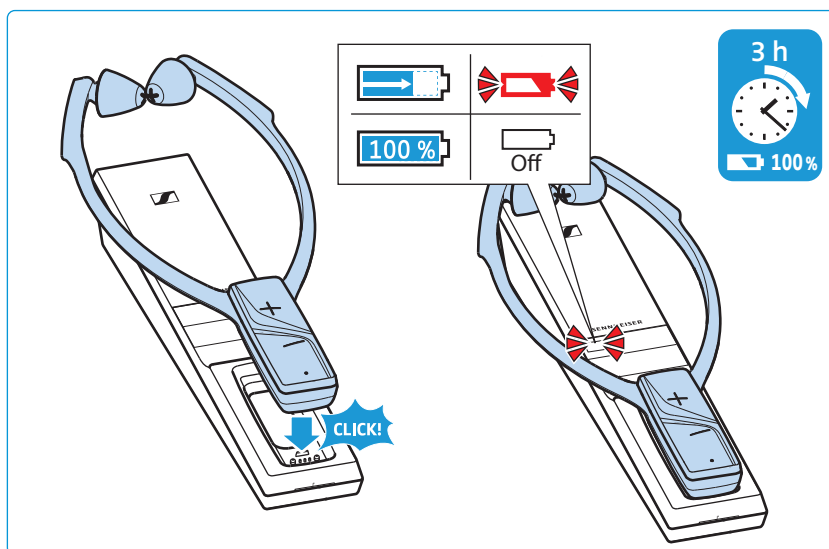
Charging the stethoset receiver's rechargeable battery




A complete charging cycle takes about 3 hours. Before using the receiver for the first time, charge its rechargeable battery for a complete charging cycle without interruption.

When the rechargeable battery is almost empty, the *Receiver status* LED lights up red. The stethoset receiver switches off after a few minutes.

- ▶ Place the stethoset receiver into the transmitter's charging compartment so that the volume buttons face upwards. The stethoset receiver is magnetically oriented to the correct position. The stethoset receiver automatically switches off and the *Battery* LED  on the transmitter lights up red. When the rechargeable battery is fully charged, the *Battery* LED  goes off.

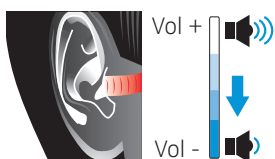


i Always store the stethoset receiver in the transmitter's charging compartment to ensure that it is fully charged when needed. The intelligent battery charging technology prevents overcharging.

If the *Battery* LED  on the transmitter flashes red, a charging error/battery error has occurred. In this case, remove the stethoset receiver from the transmitter's charging compartment. More information on the rechargeable battery can be found on page 20.

Using the RS 2000

Switching the wireless headphone system on



WARNING

Danger of hearing damage due to high volumes!

This stethoset receiver allows you to set higher volumes than conventional devices. Constant high-volume use can cause hearing damage.

- ▶ Before putting the stethoset receiver on, set the volume on the receiver to a low level.
- ▶ Do not expose yourself to high volume levels for extended periods of time.

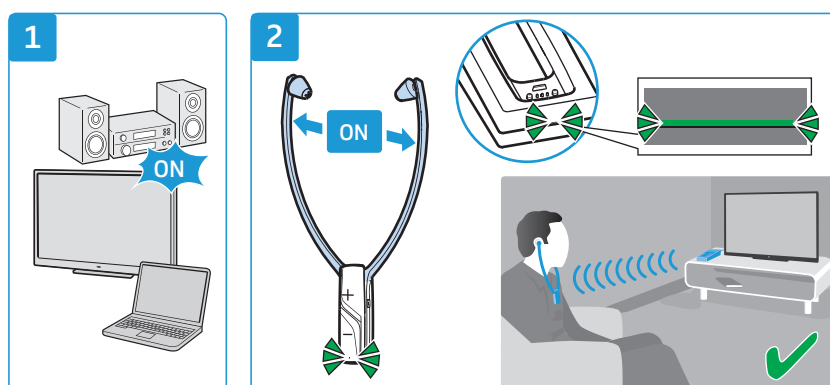
- 1 Switch your audio source on.



If the transmitter is connected to the headphone socket (see page 11) of your TV/audio source, adjust the volume of the headphone socket on your TV/audio source to at least a medium level.

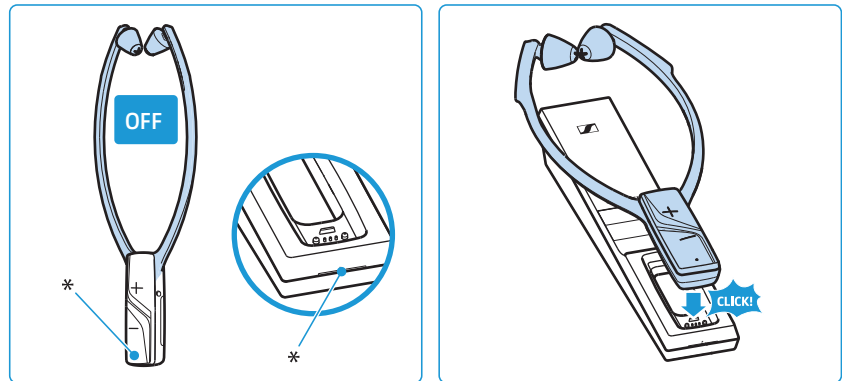
- 2 Take the stethoset receiver out of the transmitter's charging compartment and pull the ear bows apart so that you can put the receiver on.

The stethoset receiver automatically switches on when you pull the ear bows apart. The *Receiver status* LED lights up green. The transmitter automatically switches on and the *Transmitter status* LED lights up green. The audio transmission starts.



Switching the wireless headphone system off

- ▶ Take the stethoset receiver off so that the ear bows fold inwards. The stethoset receiver automatically switches off after 3 seconds. The *Receiver status* LED goes off. The transmitter automatically switches off (standby) when there is no stethoset receiver connected. The *Transmitter status* LED goes off.
- ▶ Always store the stethoset receiver in the transmitter's charging compartment to ensure that it is fully charged when needed. The charging process starts (see page 14).



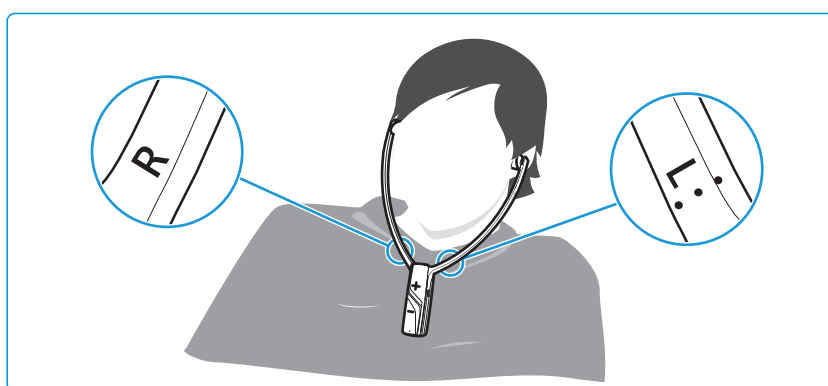
* LED goes off

To disconnect the transmitter from the power supply system (e.g. when you are on holiday):

- ▶ Unplug the power supply unit from the wall socket.

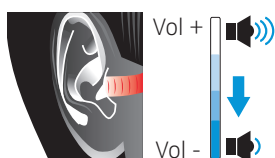
Wearing the stethoset receiver

- ▶ Wear the stethoset receiver so that it hangs freely from your ears and rests lightly on your chest. When putting the stethoset receiver on, observe the **L** (left) and **R** (right) markings on the rear of the ear bows. The volume buttons face away from your body to facilitate ease of use.
- ▶ Wear the stethoset receiver so that
 - the ear pads are positioned just in front of your ear canals.
 - you feel a gentle pressure on your ears. The ear pads adapt to your ear form. If you find the ear pads uncomfortable, try other ear pads. Ear pads in different materials and forms are available as optional accessories from your Sennheiser partner.
 - the stethoset receiver hangs freely from your ears and rests lightly on your chest.



i Spare ear pads in different materials and forms are available from your Sennheiser partner.

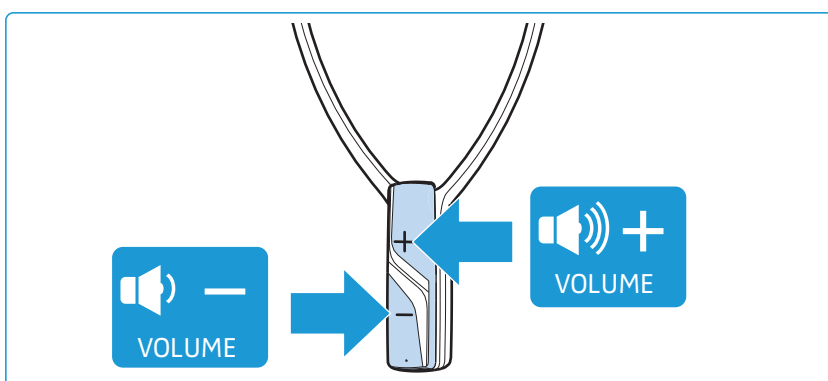
Adjusting the volume



WARNING

Danger of hearing damage due to high volumes!

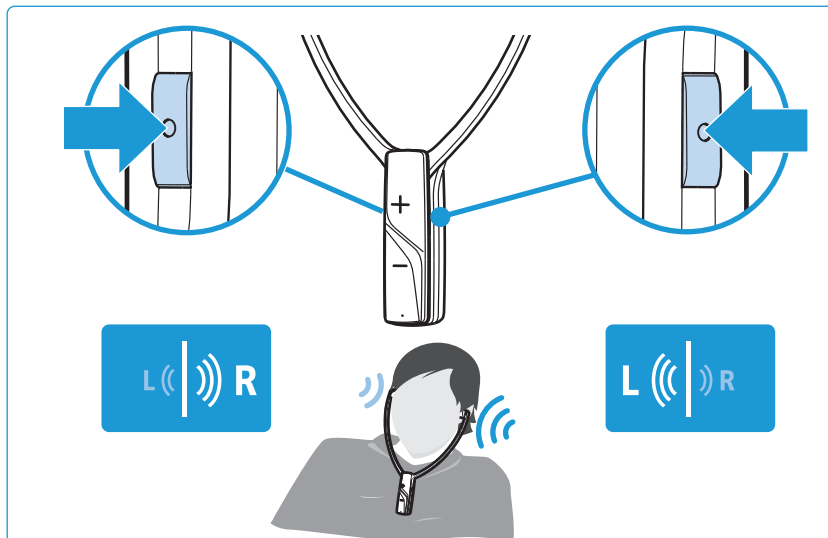
- ▶ Before putting the stethoset receiver on, set the volume on the receiver to a low level.
 - ▶ Do not expose yourself to high volume levels for extended periods of time.
-
- ▶ Press the volume button **+** or the volume button **-** until the volume is adjusted to a comfortable level.



Adjusting the balance

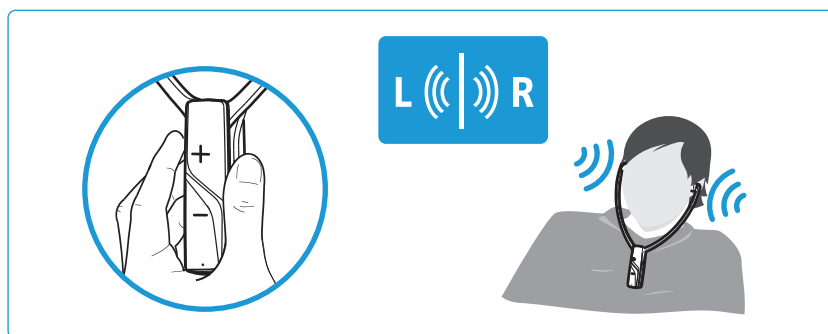
The *Balance* buttons allow for left/right volume adjustment. Adjust the balance so that you hear equally well with both ears.

- ▶ Press the *Balance* button on the right or left hand side to gradually increase or reduce the volume for your right or left ear.

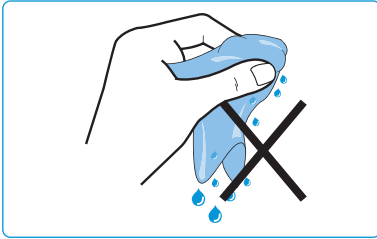


To reset the balance setting to the middle setting:

- ▶ Simultaneously press the *Balance* buttons on the right and left hand side of the stethoset receiver.



Cleaning and maintaining the RS 2000



CAUTION

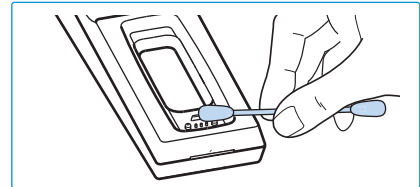
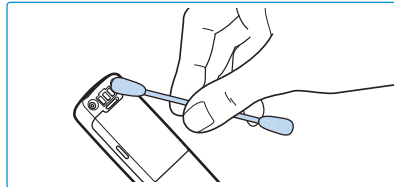
Liquids can damage the electronics of the product!

Liquids entering the housing of the product can cause a short-circuit and damage the electronics.

- ▶ Keep all liquids far away from the product.
- ▶ Do not use any solvents or cleansing agents.

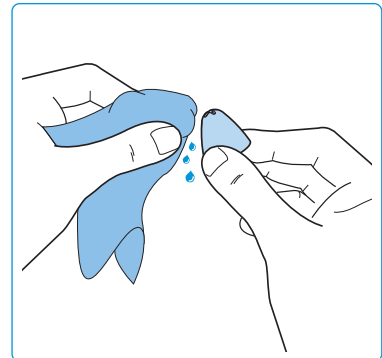
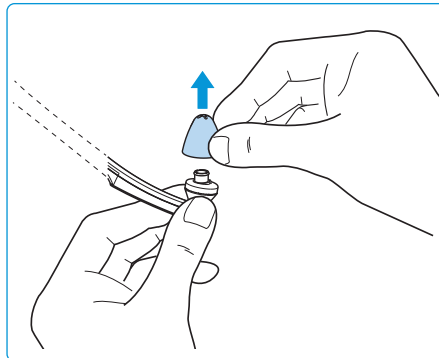
To clean the wireless headphone system:

- ▶ Switch your wireless headphone system off and disconnect the transmitter from the socket before cleaning.
- ▶ Clean the product only with a soft, dry cloth.
- ▶ Clean the charging contacts on the stethoset receiver and in the charging compartment from time to time using e.g. a cotton swab.



To clean the ear pads:

- ▶ Carefully remove the ear pads from the stethoset receiver.
- ▶ Clean the ear pads with warm soapy water and rinse thoroughly.
- ▶ Dry the ear pads.
- ▶ Put the ear pads back on the stethoset receiver.



i For reasons of hygiene, you should replace your ear pads from time to time. Spare ear pads in different materials and forms are available from your Sennheiser partner.

Replacing the stethoset receiver's rechargeable battery

The BAP 800 rechargeable battery of the stethoset receiver is compactly built into the receiver housing and does not have to be replaced or removed.

However, if the operating time of the stethoset receiver decreases drastically or if a charging error is displayed during charging (see page 14), the rechargeable battery may be exhausted or defective and has to be replaced.

CAUTION

Danger of damage to the product!

During the warranty period, the rechargeable batteries must only be replaced by an authorized Sennheiser service partner, otherwise the warranty will be null and void.

- ▶ Contact your Sennheiser service partner if the rechargeable batteries need to be replaced or removed.

Outside the warranty period, the rechargeable batteries may be replaced or removed by any qualified service center in an appropriate manner.

You need suitable tools for replacement. We therefore recommend to have the rechargeable battery replaced by your Sennheiser service partner. To find a Sennheiser service partner in your country, search at www.sennheiser.com.

Using additional functions

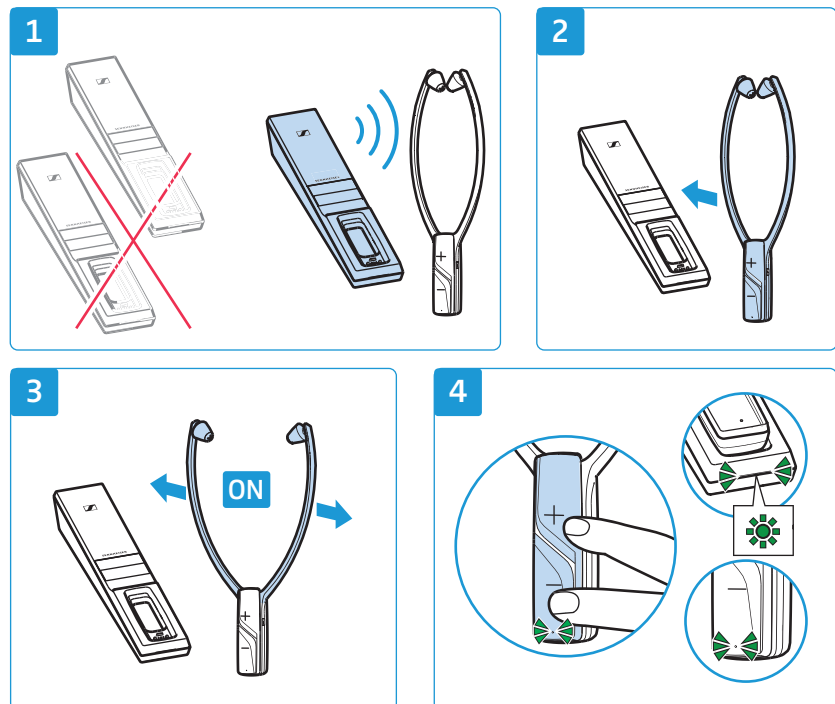
The following additional functions are not required for normal use, but allow you to extend the potential use of the wireless headphone system.

Pairing one or several stethoset receivers with the transmitter

The stethoset receiver and the transmitter of your wireless headphone system are factory pre-paired. The following steps are only necessary if you want to pair additional stethoset receivers with the transmitter.

You can simultaneously connect up to 4 paired stethoset receivers to your transmitter.

- 1 Make sure that there is only one transmitter within the transmission range.
- 2 Place the stethoset receiver as close as possible to the transmitter.
- 3 Switch the stethoset receiver on by pulling the ear bows apart.
- 4 Simultaneously press and hold the volume buttons +/-.
The *Receiver status* LED quickly flashes green. Once pairing is completed, the *Receiver status* LED and the *Transmitter status* LED light up green. The audio transmission starts.

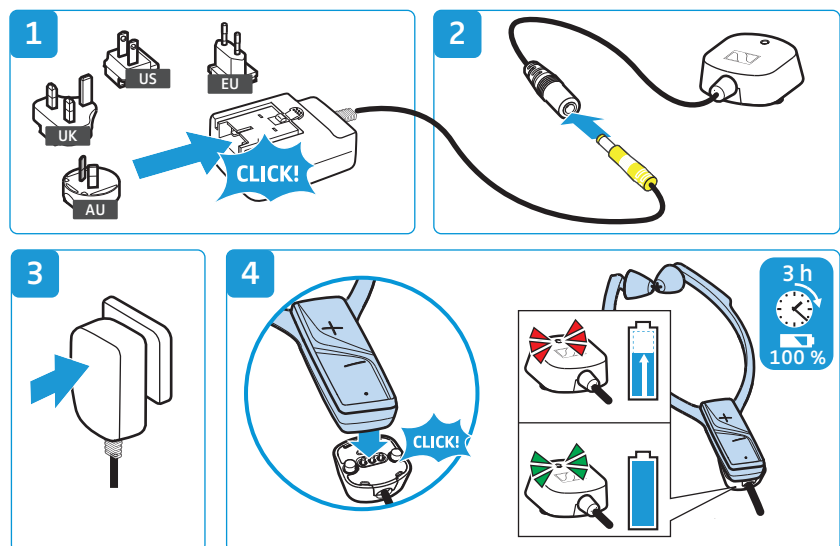


Charging the rechargeable battery using the MCA 800 charging adapter

If you have purchased an optional MCA 800 charging adapter, you can also charge the stethoset receiver using the charging adapter.

- 1 Select a suitable country adapter and slide it onto the power supply unit until it clicks audibly into place.
- 2 Connect the connector of the power supply unit to the connection socket of the MCA 800 charging adapter.
- 3 Plug the power supply unit into the wall socket.
- 4 Connect the charging adapter to the charging contacts on the stethoset receiver. The charging adapter is magnetically oriented to the correct position.

The rechargeable battery is being charged. The LED on the charging adapter lights up red. When the rechargeable battery is fully charged, the LED lights up green.



i You can also use the stethoset receiver during charging. Please note, however, that the receiver can get slightly warm during charging.

If the LED on the charging adapter flashes red and green, a charging error/battery error has occurred. In this case, disconnect the charging adapter from the stethoset receiver. More information on the rechargeable battery can be found on page 20.

If a problem occurs ...

Problem	Possible cause	Possible solution	Page
The transmitter does not switch on	No connection to the power supply system.	Check the connections of the power supply unit.	13
The headphones cannot be switched on	The rechargeable battery is empty.	Recharge the rechargeable battery.	14
	The rechargeable battery is deep discharged.	Recharge the rechargeable battery for several hours. If the rechargeable battery is deep discharged, the charging process might take a while to start (up to 1 hour).	
No sound	No connection to the power supply system.	Check the connections of the power supply unit.	13
	The audio plug is not properly connected.	Check the audio plug connection.	10
	The audio source is switched off.	Switch the audio source on.	–
	The volume of the analog audio source is either set to the minimum or is on mute.	Increase the volume on the audio source to at least a medium level/ deactivate the muting function on the audio source.	–
	The audio cable is defective.	Replace the audio cable.	–
	The stethoset receiver is not correctly paired with the transmitter (e.g. additional stethoset receiver).	Pair the stethoset receiver with the transmitter again.	21
Occasional sound dropouts	The stethoset receiver is out of the transmitter's range.	Reduce the distance between the stethoset receiver and the transmitter.	–
	The signal is shielded.	Remove obstacles between the transmitter and the stethoset receiver.	–
	There are interfering devices (e.g. WiFi router, Bluetooth devices or microwaves) in the vicinity.	Change the position of the transmitter or of the receiver. Separate the transmitter from other wireless devices by at least 50 cm/ 20".	9
Sound too low	The volume on the stethoset receiver is adjusted to low.	Increase the volume on the stethoset receiver.	17
	The volume of the analog audio source is adjusted to low.	Increase the volume of the analog audio source to at least a medium level (approx. $1 V_{\text{rms}}$).	–
Sound only on one ear	The balance is misadjusted.	Adjust the balance.	18
	The audio cable is not properly connected.	Check the audio plug connection.	10
	The TV has only a mono headphone socket	Use an adapter (mono to stereo jack socket) to connect the transmitter to the TV.	–

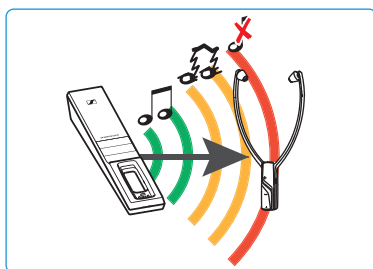
If a problem occurs ...

Problem	Possible cause	Possible solution	Page
Sound is distorted	The audio cable is defective.	Replace the audio cable.	–
	The signal of the audio source is distorted.	Reduce the volume of the audio source.	–
	The volume on the stethoset receiver is adjusted to high.	Reduce the volume on the stethoset receiver.	17
The <i>Receiver status</i> LED lights up red	The rechargeable battery is almost empty.	Recharge the rechargeable battery.	14
The operating time decreases	The rechargeable battery is exhausted.	Have the rechargeable battery replaced by an authorized Sennheiser service partner.	20
The stethoset receiver does not connect to the transmitter	The stethoset receiver is not paired with the transmitter.	Pair the stethoset receiver with the transmitter.	21
	The distance to the transmitter is too large.	Reduce the distance between the stethoset receiver and the transmitter.	–
	4 stethoset receivers are currently connected to the transmitter	Up to 4 stethoset receivers can be simultaneously used with the transmitter.	–

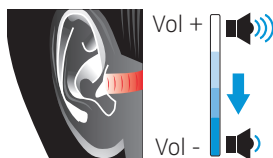
If a problem occurs that is not listed in the above table or if the problem cannot be solved with the proposed solutions, visit the RS 2000 product page at www.sennheiser.com for the most up-to-date list of frequently asked questions.

You may also contact your local Sennheiser partner for assistance. To find a Sennheiser partner in your country, search at www.sennheiser.com.

Leaving the range of the transmitter



The range of the transmitter largely depends on environmental conditions such as wall thickness, wall composition etc. If you leave the range of the transmitter, the audio first cuts out occasionally until it finally cuts out completely. The *Receiver status* LED on the stethoset receiver flashes green (or red if the rechargeable battery is almost empty). The transmitter automatically switches off (standby) when there is no stethoset receiver connected. The *Transmitter status* LED goes off.



WARNING

Danger of hearing damage due to high volumes!

If you leave the range of the transmitter and the connection is lost, the stethoset receiver remains switched on. If, in this case, you increase the volume on the stethoset receiver and then re-enter the transmitter's range, the volume will be louder than before the connection loss.

- ▶ Do not change the volume when you are outside the range of the transmitter.
- ▶ Take off the stethoset receiver before re-entering the range of the transmitter.

If you re-enter the range of the transmitter, the transmitter automatically switches on again and the connection is re-established.

Specifications

RS 2000 system

Carrier frequency	2.40 to 2.48 GHz
Modulation	8-FSK Digital
Signal-to-noise ratio	typ. 85 dBA at 1 V _{rms}
RF output power	max. 10 dBm Class 1
Audio latency	< 60 ms
Range	up to 50 m/328 ft line of sight
Number of stethoset receivers that can be simultaneously connected to the transmitter	4
Temperature range	operation: 5 °C to +40 °C storage: -25 °C to +70 °C
Relative air humidity (non-condensing)	operation: 10 to 80 % storage: 10 to 90 %

RR 2000 stethoset receiver

Type	intra-aural, closed
Transducer principle	dynamic, neodymium magnets
Ear pad material	silicone
Frequency response	15 Hz to 15 kHz
Sound pressure level	125 dB at 1 kHz, 1 V _{rms}
THD	< 0.5 % at 1 kHz, 100 dB SPL
Operating time	up to 9 hours
Charging time of rechargeable battery	up to 3 hours
Power supply	built-in lithium polymer rechargeable battery, 3.7 V, 350 mAh
Weight (incl. rechargeable battery)	approx. 60 g
Dimensions (switched off, W x H x D)	approx. 102 x 265 x 23 mm

TR 2000 transmitter

Audio connection	3.5 mm jack socket input voltage range: 0.15 to 4.0 V _{pk}
Power supply	5 V $\overline{=}$, 1 A
Power consumption	operation: typ. 4 W standby: \leq 0.5 W (without charging)
Dimensions (W x H x D)	approx. 50 x 42 x 270 mm

NT 5-10AW power supply unit

Nominal input voltage	100 – 240 V~
Power frequency	50 – 60 Hz
Nominal output voltage	5 V ===
Nominal output current	1 A
Temperature range	operation: 0 °C to +40 °C storage: -25 °C to +70 °C
Relative air humidity (non-condensing)	operation: 10 to 80 % storage: 10 to 90 %

Manufacturer Declarations

Warranty

Sennheiser electronic GmbH & Co. KG gives a warranty of 24 months on this product.

For the current warranty conditions, please visit our website at www.sennheiser.com or contact your Sennheiser partner.

FOR AUSTRALIA ONLY

Sennheiser goods come with guarantees that cannot be excluded under the Australian Consumer Law. You are entitled to a replacement or refund for a major failure and compensation for any other reasonably foreseeable loss or damage. You are also entitled to have the goods repaired or replaced if the goods fail to be of acceptable quality and the failure does not amount to a major failure.

This warranty is in addition to other rights or remedies under law. Nothing in this warranty excludes, limits or modifies any liability of Sennheiser which is imposed by law, or limits or modifies any remedy available to the consumer which is granted by law.

To make a claim under this warranty, contact Sennheiser Australia Pty Ltd, Unit 3, 31 Gibbes Street Chatswood NSW 2067, Australia; Phone: (02) 9910 6700, email: service@sennheiser.com.au

All expenses of claiming the warranty will be borne by the person making the claim.

The Sennheiser International Warranty is provided by Sennheiser Australia Pty Ltd (ABN 68 165 388 312), Unit 3, 31 Gibbes Street Chatswood NSW 2067, Australia.

In compliance with the following requirements

- WEEE Directive (2012/19/EU)



Please dispose of this product at the end of its operational lifetime by taking it to your local collection point or recycling center for such equipment. This will help to protect the environment in which we all live.

- Battery Directive (2006/66/EC & 2013/56/EU)



The supplied batteries/rechargeable batteries can be recycled. Please dispose of them as special waste or return them to your specialist dealer. In order to protect the environment, only dispose of exhausted batteries.


CE Declaration of Conformity



- ErP Directive (2009/125/EC)
- RoHS Directive (2011/65/EU)

The declaration is available at www.sennheiser.com/download. Before putting into operation, please observe the respective country-specific regulations.

Statements regarding FCC and Industry Canada

FCC Declaration of Conformity (DoC)	
 SENNHEISER Model No: TR 2000, RR 2000, TR 5000, RR 5000, RR Flex	
We,	Sennheiser Electronic Corporation One Enterprise Drive • Old Lyme • CT 06371 • USA Tel: +1 (860) 434 9190 Fax: +1 (860) 434 1759
declare the above device comply with the requirements of Federal Communications Commission.	
This device complies with Part 15 of the FCC rules. Operation is subjected to the following two conditions: 1) This device may not cause harmful interference, and 2) This device must accept any interference received, including interference that may cause undesired operation.	
Responsible Party: Markus Warlitz	

This device complies with Part 15 of the FCC rules and RSS-247 of Industry Canada. Operation is subject to the following two conditions: 1) This device may not cause harmful interference, and 2) This device must accept any interference received, including interference that may cause undesired operation.

This equipment has been tested and found to comply with the limits for a Class B digital device, pursuant to part 15 of the FCC Rules and RSS-247 of Industry Canada. These limits are designed to provide reasonable protection against harmful interference in a residential installation. This equipment generates, uses and can radiate radio frequency energy and, if not installed and used in accordance with the instructions, may cause harmful interference to radio communications. However, there is no guarantee that interference will not occur in a particular installation. If this equipment does cause harmful interference to radio or television reception, which can be determined by turning the equipment off and on, the user is encouraged to try to correct the interference by one or more of the following measures:

- Reorient or relocate the receiving antenna.
- Increase the separation between the equipment and receiver.
- Connect the equipment into an outlet on a circuit different from that to which the receiver is connected.
- Consult the dealer or an experienced radio/TV technician for help.

Changes or modifications made to this equipment not expressly approved by Sennheiser electronic Corp. may void FCC authorization to operate this equipment.

CAN ICES-3 (B)/NMB-3(B)

RF Radiation Exposure Information

Since the radiated output power of this device is far below the FCC radio frequency exposure limits, it is not subjected to routine RF exposure evaluation as per Section 2.1093 of the FCC rules.

This device meets FCC RF exposure guidelines for an uncontrolled environment. The transmitter of this device should be installed and operated at least 20 cm away from the user's body. Use of other accessories not verified by the manufacturer may not ensure compliance with FCC RF exposure guidelines.

This transmitter must not be co-located or operated in conjunction with any other antenna or transmitter.

Information sur l'exposition aux rayonnements radio fréquence (RF)

La puissance RF rayonnée de cet appareil étant de loin inférieure aux limites imposées par la FCC, il n'est pas soumis à la réglementation sur l'exposition aux RF selon la section 2.1093 de la réglementation FCC.

Cet équipement est conforme aux limites d'exposition aux rayonnements imposées par la FCC pour un environnement non réglementé. L'émetteur de cet équipement doit être installé et utilisé à une distance minimale de 20 cm du corps de l'utilisateur. L'utilisation d'autres accessoires non homologués par le fabricant remet en cause la conformité des normes imposées par la FCC.

Cet émetteur ne doit pas être positionné à proximité d'une autre antenne ou d'un autre émetteur, ni utilisé avec une autre antenne ou un autre émetteur.



Sennheiser electronic GmbH & Co. KG
Am Labor 1, 30900 Wedemark, Germany
www.sennheiser.com

Publ. 01/17, 570723/A01