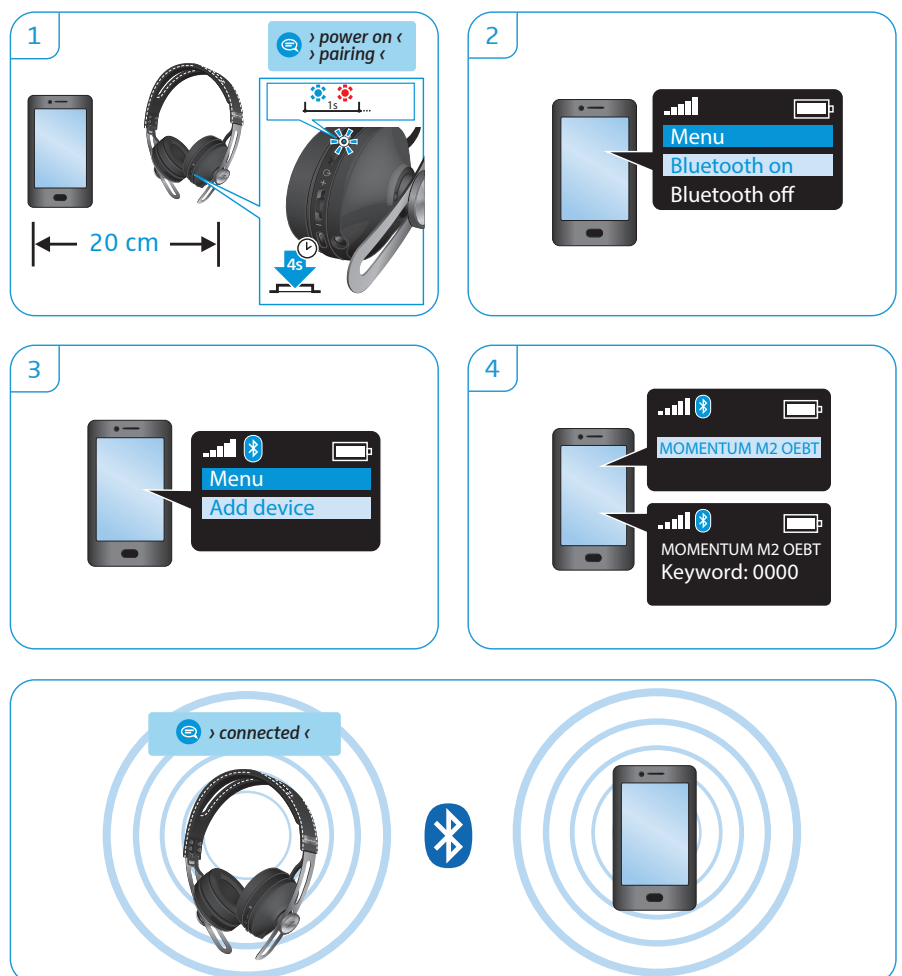


Pairing the headphones to a Bluetooth device

Ensure that your headphones are within the 20 cm range of your smartphone during this procedure.

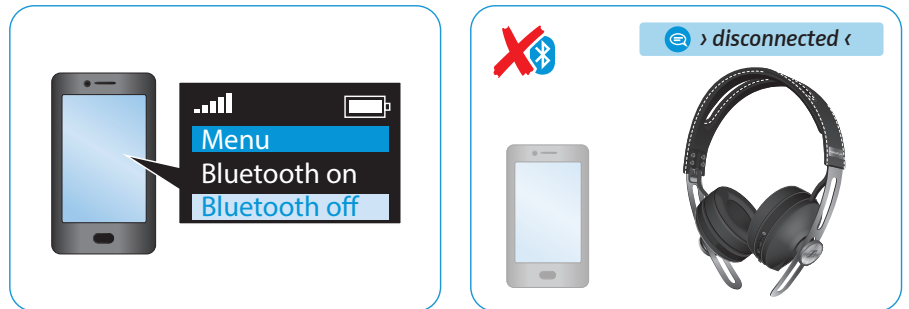
1. Switch the headphones on (see page 17). Continuously press the power button until you hear the voice prompt „*pairing*“ and the LED flashes blue and red.
The headphones are in pairing mode.
2. Enable the **Bluetooth** visibility from your smartphone.
3. From your smartphone, search for **Bluetooth** devices.
All active **Bluetooth** devices in the proximity of your smartphone are displayed.
4. From the list of **Bluetooth** devices that appears, select „*MOMENTUM M2 OEBT*“ to establish a **Bluetooth** connection to the headphones. If necessary, enter the default PIN code “0000”.
If the pairing is successful, you hear the voice prompt „*connected*“ and the LED switches off.



i If no connection is established within 5 minutes, the pairing mode breaks down completely and the headphones go to the disconnected state. Switch the headphones off and repeat the pairing procedure.

Disconnecting the headphones from an NFC or Bluetooth device

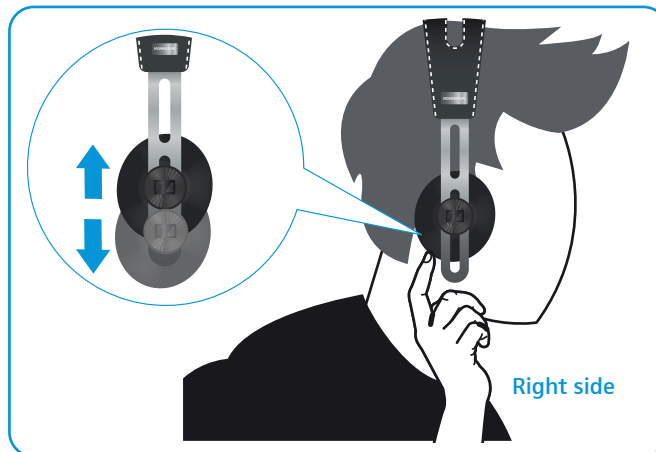
- ▶ Disable the **Bluetooth** visibility from your smartphone.
The headphones are disconnected from the smartphone, and you hear the voice prompt „*disconnected*“. The headphones then searches for other previously paired devices. If no device is found, you hear the voice prompt „*no device found*“ after few minutes.



Adjusting the headband

For good sound quality and best possible wearing comfort, you can adjust the earpad location on the headband to properly match the size of your head. The earcups feature a locking mechanism that you can easily slide up and down through the headband slider.

- ▶ Wear the headphones so that the headband runs over the top of your head.
- ▶ Adjust the location of the earpads by moving the earcups up and down of the headband slider until:
 - the earpads sit comfortably on your ears,
 - you feel even, gentle pressure on your ears,
 - a snug fit of the headband on the head is ensured.



Using the headphones

Switching the headphones on

WARNING

Danger due to high volume levels!



Listening at high volume levels for long periods of time can lead to permanent hearing defects.

- ▶ Before putting the headphones on, set the volume to a low level.
- ▶ Do not continuously expose yourself to high volume levels.

- ▶ Press the power button for 2 seconds. You hear the voice prompts „power on“ and „connected“ while the LED flashes blue. The headphones switch on.



Switching the headphones off

- ▶ Press the power button for 2 seconds. You hear the voice prompt „power off“ and the LED flashes red. The headphones switch off.



Adjusting the volume

CAUTION

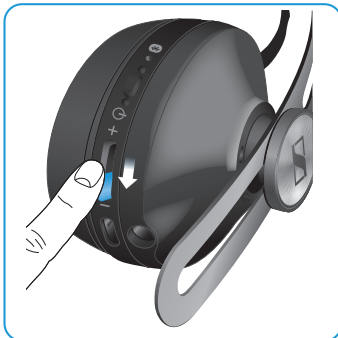
Risk of hearing damage!



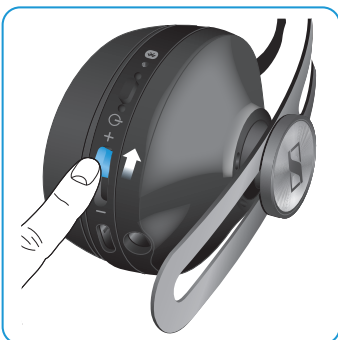
Listening at high volume levels can lead to permanent hearing defects.

- ▶ Set the volume to a low level before putting the headphones on.
- ▶ Do not continuously expose yourself to sound at high volume levels.

Control the volume anytime according to your mood or preference.



- ▶ Push the 3-way multifunction button down to reduce the volume. When the minimum volume is reached, you hear the voice prompt „*volume min*“.



- ▶ Push the 3-way multifunction button up to increase the volume. When the maximum volume is reached, you hear the voice prompt „*volume max*“.

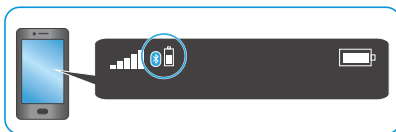
Checking the remaining battery life

If the headphones are not playing music or if there is no active call, you can check the battery life for the remaining play and call times.



- ▶ Press the 3-way multifunction button thrice quickly.
You hear the voice prompt stating the remaining play time.

Voice message	Meaning
<i>„Recharge headset“</i>	Battery is almost empty (less than 2% charged)
<i>„Below 3 hours play time“</i>	Battery is less than 15% charged
<i>„Between 3 and 5 hours play time“</i>	Battery is less than 25% charged
<i>„Between 5 and 11 hours play time“</i>	Battery is less than 50% charged
<i>„Between 11 and 18 hours play time“</i>	Battery is less than 80% charged
<i>„Between 18 and 22 hours play time“</i>	Battery is more than 80% charged



- i** Depending on your smartphone, the battery life of your headphones may also be displayed on the screen.

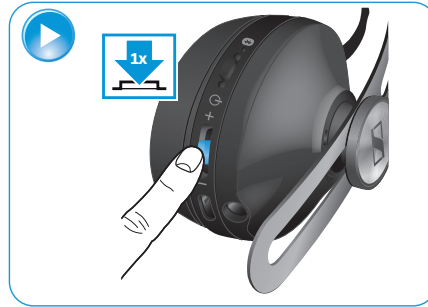
Music functions

The following music functions are only available if the headphones and the smartphone are connected using **Bluetooth** wireless technology or if the USB cable is used. Some smartphones may not support all the functions.

If your audio source supports aptX®, the headphones will automatically stream music wirelessly in aptX® high-quality mode. If your audio source does not support aptX®, music will be streamed in standard quality mode.

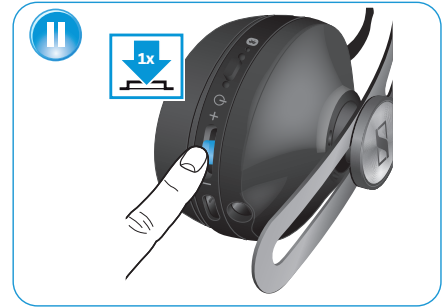
Play music

- ▶ Press the 3-way multifunction button.



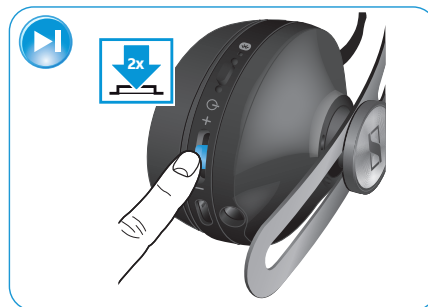
Pause the music

- ▶ Press the 3-way multifunction button.



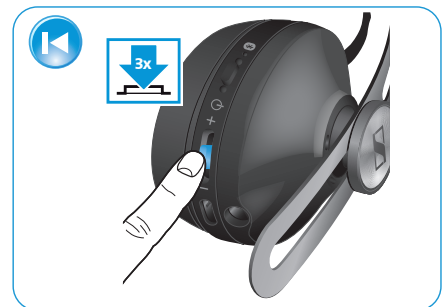
Play the next song

- ▶ Press the 3-way multifunction button twice quickly.



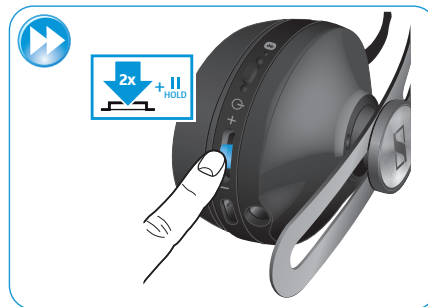
Play the previous song

- ▶ Press the 3-way multifunction button thrice quickly.



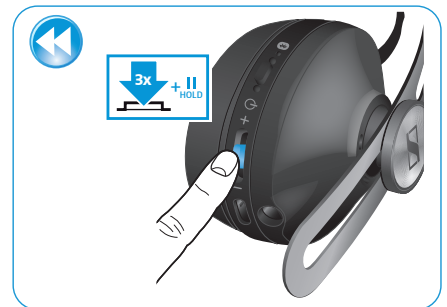
Fast-forward a song

- ▶ Press the 3-way multifunction button twice quickly and hold until the desired part of the track is reached.



Rewind a song

- ▶ Press the 3-way multifunction button thrice quickly and hold until the desired part of the track is reached.





Call functions

The following call functions are only available if the headphones and the smartphone are connected using **Bluetooth** wireless technology or if the USB cable is used. Some smartphones may not support all the functions.

Making a call

- ▶ Dial the desired number on your mobile phone.
- If your mobile phone does not automatically transfer the call to the headphones:
- ▶ Select the MOMENTUM M2 OEBT as the audio source on your smartphone (see the instruction manual of your smartphone if necessary).

Accepting/Rejecting/Ending a call

If your headphones are connected to a smartphone and you received a call, you hear a ring tone in the headphones and the LED flashes blue. If the battery level of the headphones is low, the LED flashes red.

If you are listening to music when you received the call, the music stops until you end the call.

- ▶ Press the 3-way multifunction button.

Press	Function	Voice prompt/ tone
		Accepts/Starts a call
		Rejects a call <i>„call rejected“</i>
		Ends a call <i>„call ended“</i>
		Accepts an incoming call and ends the active call
		Accepts an incoming call and puts an active call on hold
		Toggles between 2 active calls

Transferring the call to/from the headphones

Once the connection is established, you can transfer the call between the headphones and your smartphone.





- ▶ Press the 3-way multifunction button.

Press	Function	Voice prompt
		Transfers a call from the headphones to the smartphone
		Transfers a call from the smartphone to the headphones

Redialing

The redialing function must be supported by your smartphone or **Bluetooth** device (with HFP profile). The function maybe required to be activated from your device.





- ▶ Press the 3-way multifunction button.

Press	Function	Voice prompt
		Redials the last number called <i>„redialing“</i>
		Cancels redialing

Voice control functions

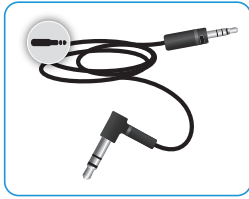
The voice control functions are only supported by **Bluetooth** smartphones with HFP profile.

1. Press the 3-way multifunction button.

Press	Function	Voice prompt
		Starts voice dialing <i>„voice dialing“</i>
		Stops voice dialing <i>„call ended“</i>

2. Say your voice command, such as *„call Jane“*.
The **Bluetooth** smartphone dials the phone number of Jane.

Using the audio cable



There are 2 connection modes when you use the audio cable:

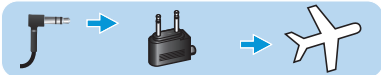
- ▶ **Active mode** - The connection mode when the audio cable is used and the headphones are switched on.
- ▶ **Passive mode** - The connection mode when the audio cable is used and the headphones are switched off.

Regardless of the connection mode, **Bluetooth** and the call and music control functions are disabled if the audio cable is used. Use only the audio cable in any of the following or similar circumstances:

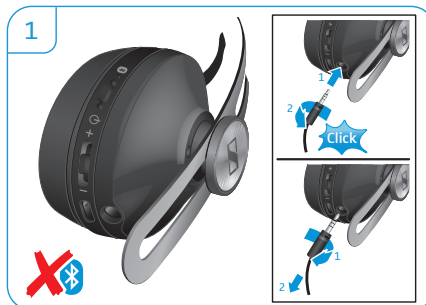
- when the headphones ran out of battery
- when wireless transmission is not allowed e. g. during aircraft take-off and landing

Connecting using the audio cable

1. Insert the 2.5 mm audio plug into the audio input of the headphones until you hear a click sound. Turn counterclockwise and ensure that it is locked securely in place.
The **Bluetooth** connection is disabled.
2. Connect the 3.5 mm audio plug into:
 - the audio output of your smartphone.
 - the in-flight adapter if you want to use the headphones with an in-flight entertainment system.



If the connection mode is active, the **NoiseGard** active noise cancellation feature functions normally, if the connection mode is passive, the active noise cancellation feature is disabled.



Caring and maintenance

CAUTION

Liquids can damage the electronics of the product!



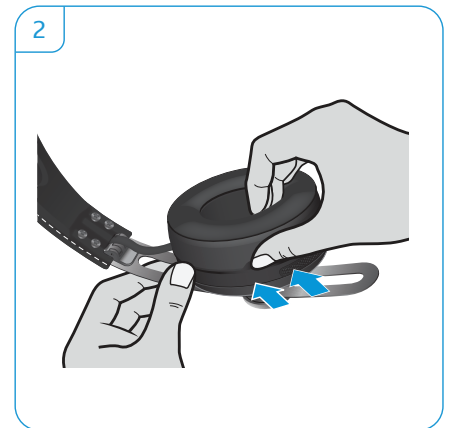
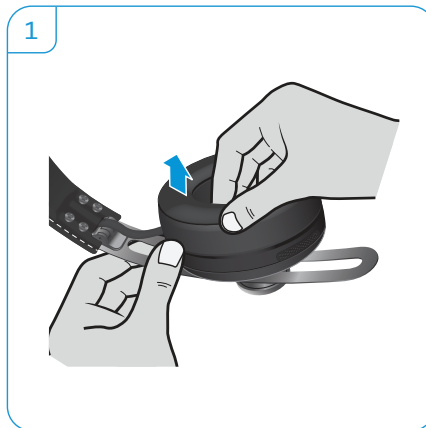
Liquids entering the housing of the product can cause a short-circuit and damage the electronics.

- ▶ Keep all liquids away from this product.
- ▶ Do not use any solvents or cleaning agents.

Replacing the earpads

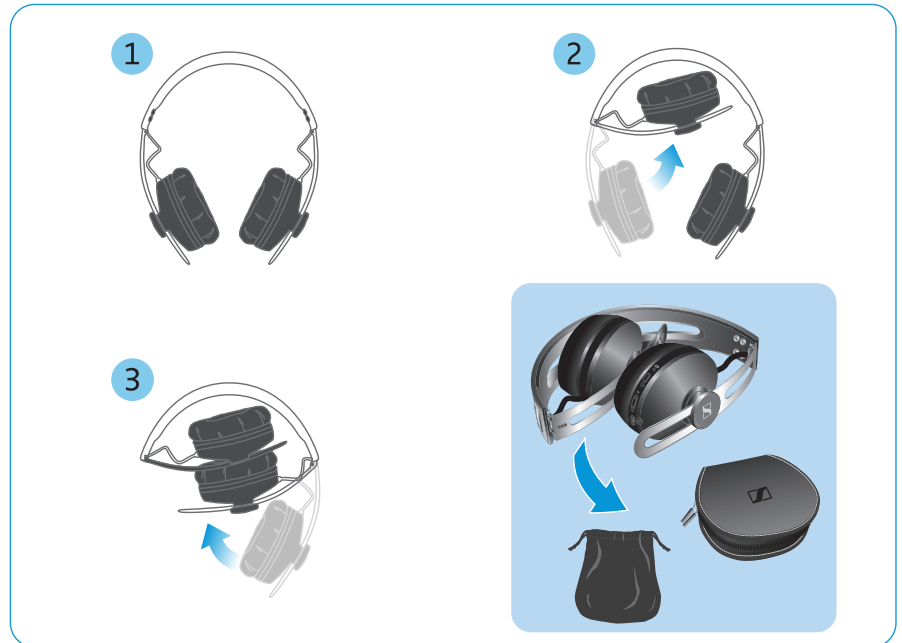
Depending on personal usage and for reasons of hygiene, you should replace earpads from time to time. Spare earpads are available for sale at your local Sennheiser partner.

1. Lightly pull the earpad away from earcup until it is detached.
2. Secure the new earpad by inserting the fixation band in the space on the earcup.



Storing and handling

To keep the headphones in good condition and to avoid nicks and scratches, fold the earcups to the direction of the headband and place it in the preferred carry case when you are travelling or when it is not in use.



Updating the software using the Sennheiser Updater

You can update the software of your headphones by using the free “Sennheiser Updater” PC software.

- ▶ Download the “Sennheiser Updater” from www.sennheiser.com/cc/software.
- ▶ Install the PC software. To install the software, you need administrator rights on your computer.
- ▶ To update the software, connect only one product at a time.

Updating the software of the headphones

1. Connect the headphones to your computer using the USB cable.
2. Start the “Sennheiser Updater”.

The “Sennheiser Updater” compares the installed firmware version of the headphones to the latest firmware version available for download. If your firmware needs to be updated, upgrade to the latest version according to the instructions of the “Sennheiser Updater”.

Replacing/removing the rechargeable battery

CAUTION

Danger of damage to the product!



During the warranty period, the rechargeable batteries must only be replaced by an authorized Sennheiser service center, otherwise the warranty will be null and void.

- ▶ Contact your Sennheiser service center if the rechargeable batteries need to be replaced or removed. Outside the warranty period, the rechargeable batteries may be replaced or removed by any qualified service center in an appropriate manner.
-

Troubleshooting

Problem	Possible cause	Possible solution	Page
Headphones cannot be switched on	Battery is empty	Charge headphones.	12
	Battery is completely exhausted/worn out	Visit the Sennheiser service center nearest you for battery replacement.	
No audio signal	Headphones are not paired with your device	Check if the headphones are paired. If necessary, pair the headphones with your device again.	13
	Volume too low	Increase the volume.	18
	Headphones are switched off	Switch the headphones on.	17
Headphones cannot connect	Pairing does not work	Check if your smartphone supports the HFP or HSP Bluetooth profile.	
	Smartphone is switched off	Switch your smartphone on.	
	Bluetooth wireless technology is deactivated from the smartphone	Activate the Bluetooth wireless technology feature on your smartphone.	
Headphones do not respond to any button press	Function of the headphones is faulty	Clear the pair settings.	29

If you encounter a problem that is not listed in the table, or if the solutions provided do not work, please contact the authorized Sennheiser service partner for assistance.

To find a Sennheiser service partner in your country, visit www.sennheiser.com.



Leaving the Bluetooth transmission range

Wireless calling and streaming are only possible in the **Bluetooth** transmission range of your smartphone. The transmission range largely depends on environmental conditions such as wall thickness, wall composition etc. With a free line of sight, the transmission range of most smartphones and **Bluetooth** devices is up to 10 meters.

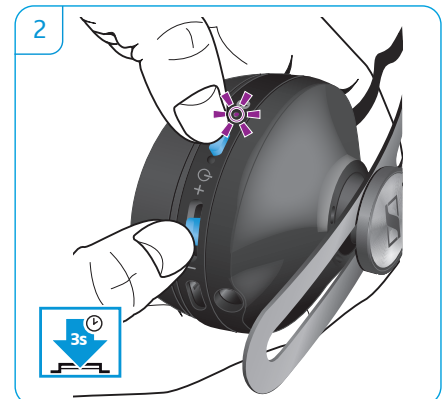
If the headphones leave the **Bluetooth** transmission range of the smartphone, the sound quality deteriorates and you hear the voice prompt „*lost connection*“ repeatedly. At this point the connection breaks down completely. You can re-establish the connection if you re-enter the **Bluetooth** transmission range and you hear the voice prompt „*connected*“.

To re-establish the connection:

- ▶ Press the 3-way multifunction button

Clearing the paired settings

1. Switch the headphones on (see page 17). Continuously press the power button until you hear the voice prompt „*pairing*“ and the LED flashes blue and red.
The headphones are in pairing mode.
2. Press the 3-way multifunction button and the power button simultaneously for 3 seconds.
The LED flashes purple thrice and the headphones go back to pairing mode. The pair settings stored on the headphones are cleared.



Specifications

M2 OEBT

Ear coupling	On-Ear
Frequency response	16 Hz - 22 kHz
Transducer principle	Dynamic, closed
Frequency response (MIC)	<i>Wideband:</i> 100 Hz-8 kHz <i>Narrowband:</i> 300 Hz-3.4 kHz
Sound pressure level (SPL)	111 dB (Passive: 1 kHz/1 Vrms)
Impedance	<i>Active mode:</i> 480 Ω <i>Passive mode:</i> 28 Ω
THD – total harmonic distortion (1 kHz, 100 dB SPL)	<0.5%
Pick-up pattern (Speech audio)	Dual omni-directional microphone (2 mic beamforming array)
Noise compensation	NoiseGard™ hybrid active noise cancellation technology with 4 pick-up microphones
Total noise attenuation	Up to 20 dB
Battery Type	Rechargeable Lithium-ion Polymer (600 mAh)
Operating time	22 hours (HFP + ANC)
Charging time	approx. 3 hours



Bluetooth

Version	4.0, class 1
Transmission frequency	2402 MHz to 2480 MHz
Profiles	HSP, HFP, AVRCP, A2DP, DIP
Codec	aptX®

Manufacturer declarations

Warranty

Sennheiser electronic GmbH & Co. KG gives a warranty of 24 months on this product. For the current warranty conditions, please visit our website at www.sennheiser.com or contact your Sennheiser partner.

FOR AUSTRALIA ONLY

Sennheiser goods come with guarantees that cannot be excluded under the Australian Consumer Law. You are entitled to a replacement or refund for a major failure and compensation for any other reasonably foreseeable loss or damage. You are also entitled to have the goods repaired or replaced if the goods fail to be of acceptable quality and the failure does not amount to a major failure.

This warranty is in addition to other rights or remedies under law. Nothing in this warranty excludes, limits or modifies any liability of Sennheiser which is imposed by law, or limits or modifies any remedy available to the consumer which is granted by law.

To make a claim under this warranty, contact

Sennheiser Australia Pty Ltd, Unit 3, 31 Gibbes Street Chatswood NSW 2067, Australia

Phone: (02) 9910 6700, email: service@sennheiser.com.au.

All expenses of claiming the warranty will be borne by the person making the claim.

The Sennheiser International Warranty is provided by Sennheiser Australia Pty Ltd (ABN 68 165 388 312), Unit 3, 31 Gibbes Street Chatswood NSW 2067 Australia.

In accordance with the following requirements

- WEEE Directive (2012/19/EU)
Please dispose of this product at the end of its operational lifetime by taking it to your local collection point or recycling center for such equipment.
- Battery Directive (2013/56/EU)
The product's built-in rechargeable batteries can be recycled. In order to protect the environment, please dispose of defective products with their rechargeable batteries as special waste or return them to your specialist dealer.


CE Conformity

- R&TTE Directive (1999/5/EC)
- EMC Directive (2014/30/EU)
- Low Voltage Directive (2006/95/EC)
- RoHS Directive (2011/65/EU)
- Product Safety Directive (2001/95/EC)
Headphones for mobile players: EN 60065/A12, EN 50332-2

The CE Declaration of Conformity is available on our website at www.sennheiser.com.

Before putting the product into operation please observe the respective country-specific regulations!

Statements regarding FCC and Industry Canada

FCC Declaration of Conformity (DoC)	
We,	 SENNHEISER Model No: M2 OEBT
	Sennheiser Electronic Corporation One Enterprise Drive • Old Lyme • CT 06371 • USA Tel: +1 (860) 434 9190 Fax: +1 (860) 434 1759
declare the above device comply with the requirements of Federal Communications Commission.	
This device complies with Part 15 of the FCC rules. Operation is subjected to the following two conditions: 1) This device may not cause harmful interference, and 2) This device must accept any interference received, including interference that may cause undesired operation.	
Responsible Party: Greg Beebe	

This device complies with Part 15 of the FCC rules and RSS-210 of Industry Canada. Operation is subject to the following two conditions: 1) This device may not cause harmful interference, and 2) This device must accept any interference received, including interference that may cause undesired operation.

This equipment has been tested and found to comply with the limits for a Class B digital device, pursuant to part 15 of the FCC Rules and RSS-210 of Industry Canada. These limits are designed to provide reasonable protection against harmful interference in a residential installation. This equipment generates, uses and can radiate radio frequency energy and, if not installed and used in accordance with the instructions, may cause harmful interference to radio communications. However, there is no guarantee that interference will not occur in a particular installation. If this equipment does cause harmful interference to radio or television reception, which can be determined by turning the equipment off and on, the user is encouraged to try to correct the interference by one or more of the following measures:

- Reorient or relocate the receiving antenna.
- Increase the separation between the equipment and receiver.
- Connect the equipment into an outlet on a circuit different from that to which the receiver is connected.
- Consult the dealer or an experienced radio/TV technician for help.

Changes or modifications made to this equipment not expressly approved by Sennheiser electronic Corp. may void FCC authorization to operate this equipment.

CAN ICES-3 (B)/NMB-3(B)

RF Radiation Exposure Information

Since the radiated output power of this device is far below the FCC radio frequency exposure limits, it is not subjected to routine RF exposure evaluation as per Section 2.1093 of the FCC rules.

This device complies with the US and Industry Canada portable device RF exposure limits set forth for an uncontrolled environment and is safe for intended operation as described in the user manual. Further RF exposure reduction can be achieved if the device can be kept as far as possible from the user's body or set to lower output power if such provision is available.

Use of other accessories not verified by the manufacturer may not ensure compliance with FCC and Industry Canada RF exposure compliance guidelines.

This transmitter must not be co-located or operated in conjunction with any other antenna or transmitter.

Trademarks

Sennheiser and **NoiseGard™** are trademarks of Sennheiser electronic GmbH & Co. KG.

The **Bluetooth** name and the **Bluetooth** trademarks are owned by **Bluetooth SIG, Inc.** Sennheiser uses this brand under license.

The N-Mark is a trademark or registered trademark of NFC Forum, Inc. in the United States and in other countries.

Alcantara® is a registered trademark of Alcantara S.p.A., Italy

The aptX® mark and the aptX logo are trademarks of CSR plc or one of its group companies and may be registered in one or more jurisdictions.



Sennheiser electronic GmbH & Co. KG

Am Labor 1, 30900 Wedemark, Germany
www.sennheiser.com

Publ. 01/15, A01