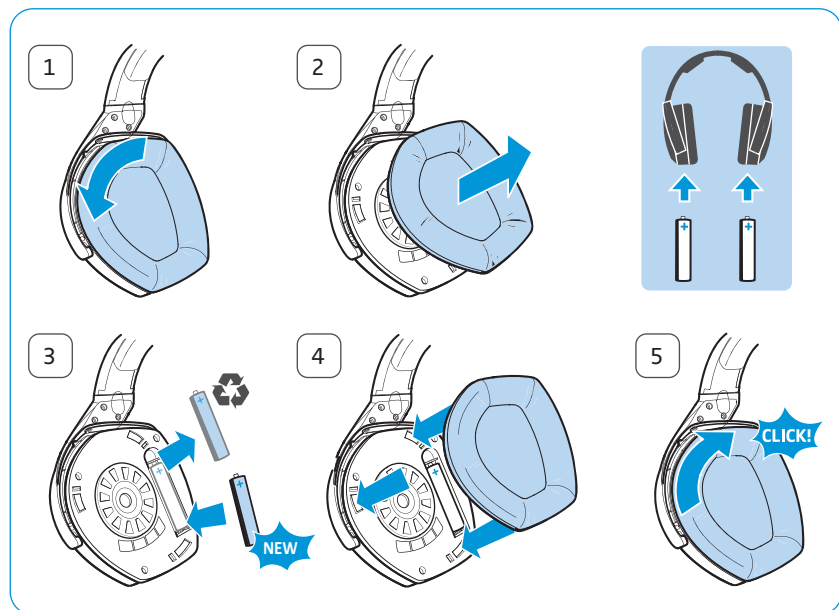


## Inserting or replacing the rechargeable batteries

- 1 Lightly twist the ear pads counterclockwise until you overcome a slight resistance.
- 2 Lift the ear pads off the ear cups to reveal the battery compartments.
- 3 Insert the rechargeable batteries into the compartments. To replace the batteries, pull the batteries out of the compartments and insert the new ones. Be sure to observe correct polarity when inserting the batteries. Please dispose old batteries as special waste or return them to your specialist dealer.
- 4 Hook the ear pads onto the ear cups. As you put back the ear pads, observe the **L** (left) and **R** (right) markings on the rear of the ear pads.
- 5 Twist the ear pads clockwise until you hear a click sound. Ensure that they are locked firmly onto the ear cups.



**i** You can also power the headphones using standard batteries (AAA size, 1.5 V). Note however, that standard batteries are not rechargeable, and if you are using non-rechargeable batteries, you must not place the headphones on the headphones holder.

## Charging the rechargeable batteries

### CAUTION Danger of damage to the headphones!



If you insert non-rechargeable batteries into the battery compartments, the batteries may leak during charging and can damage your headphones.

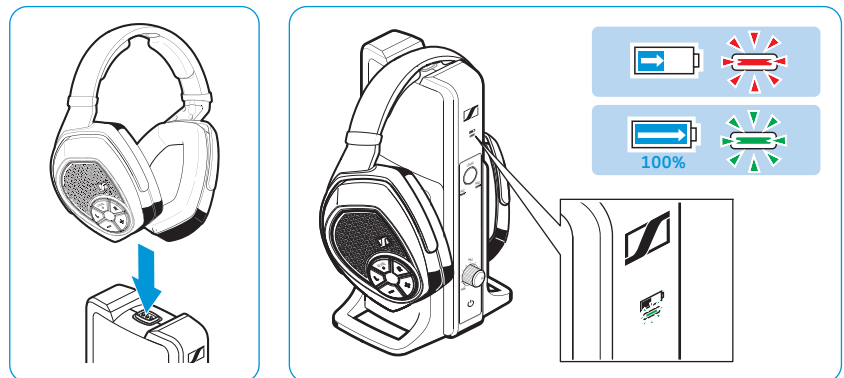
- ▶ Do not place the headphones on the headphones holder if you are using non-rechargeable batteries.



In general, a complete charging cycle takes about 8.5 hours. However, before using the headphones for the first time, charge the rechargeable batteries for at least 16 hours without interruption to optimize the performance of the batteries.

When the rechargeable batteries are almost empty, the HDR status LED turns red and you hear beeps in the headphones. The headphones switch off after few minutes.

- ▶ Place the headphones on the headphones holder of the transmitter. You may place the headphones on either side provided that the charging contacts of the headphones and the transmitter connect. The headphones automatically switch off and the Charge status LED  on the transmitter lights up red. When the rechargeable batteries are fully charged, the Charge status LED  turns green.



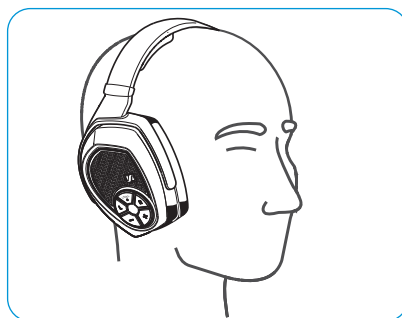
- i** When not in use, place the headphones on the headphones holder to ensure that batteries are fully charged when needed. The transmitter utilizes an intelligent battery charging technology that prevents overcharging.

After taking the headphones from the holder, the charge status LED indicates the approximate operating time (see page 9).

## Adjusting the headband

For good sound quality and best possible wearing comfort, the headband has to be adjusted to properly fit your head. The headphones feature an adjustable headband with a snap-in locking mechanism for easy adjustment.

- ▶ Wear the headphones so that the headband runs over the top of your head. Observe the **L** (left) and **R** (right) markings on the outer headband when putting the headphones on.
- ▶ Adjust the length of the headband until
  - your ears are comfortably covered by the ear pads,
  - you feel even, gentle pressure around your ears,
  - a snug fit of the headband on the head is ensured.



# Using your RS 185 headphone system

## Switching your wireless headphone system on



### WARNING

**Danger due to high volume levels!**



Listening at high volume levels can lead to permanent hearing defects.

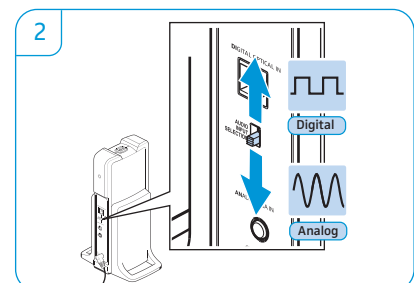
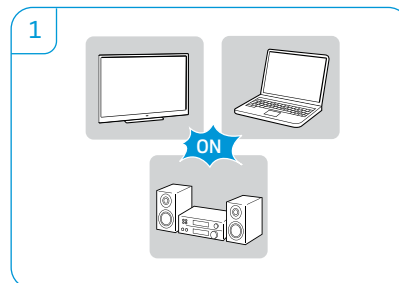
- ▶ Before putting the headphones on and before toggling between your audio inputs, adjust the volume on the headphones to a low level. Toggling between different inputs may cause enormous volume jumps that can damage your hearing.
- ▶ Do not expose yourself to high volume levels for long periods of time.


- 1 Switch your audio source on.



If you are using the headphone connection (see page 15) to connect to your audio source, adjust the volume from the source, or in some cases from the headphone socket on your audio source (e.g. TV), to at least the medium level.

- 2 Slide the **AUDIO INPUT SELECTION** switch up or down to select your audio source (see page 21).  
The status LED  on the transmitter lights up green.
- 3 Press and hold the HDR power button  for approx. 2 seconds to switch the headphones on.  
The transmitter in standby mode recognizes the active paired headphones and automatically transmits a signal. The status LEDs on the transmitter and the headphones light up green.

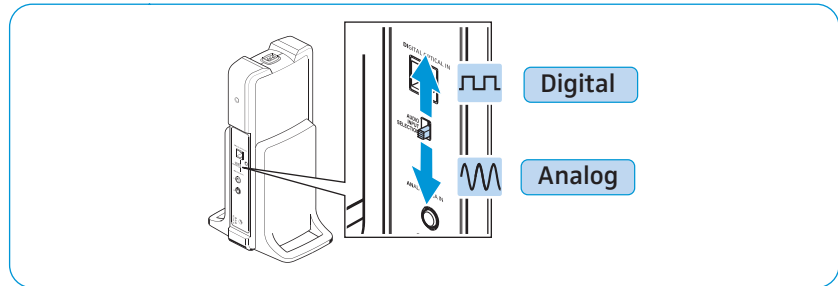


-  If the headphones are brought outside the transmission range or if there is no audio signal received from the transmitter for more than 5 minutes, the headphones switch off automatically.

## Selecting an audio input

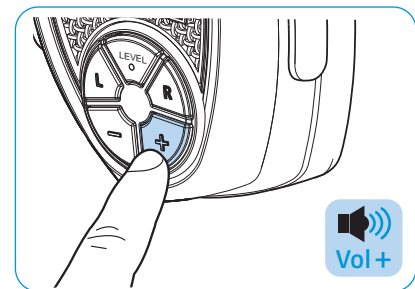
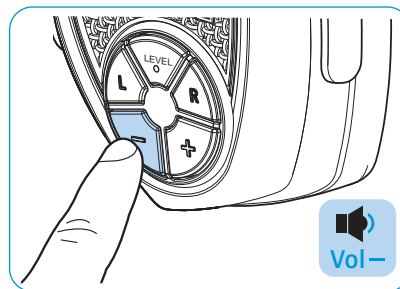
If both analog and digital audio inputs are connected to different audio sources, the headphone system enables you to toggle between the two inputs.

- ▶ Push the **AUDIO INPUT SELECTION** switch up to listen to an audio source connected to the digital optical input (see page 13).
- ▶ Push the **AUDIO INPUT SELECTION** switch down to listen to an audio source connected to the analog input (see pages 14 and 15).





## Adjusting the volume


- ▶ Press the Volume + button or the Volume – button repeatedly until the volume is adjusted to the desired level. When the minimum or maximum volume setting is reached, you hear a beep in the headphones.



## Muting/unmuting the headphones

- ▶ Press the HDR power button  to mute the headphones.
- ▶ Press the HDR power button  or any of the Volume +/-, Balance L/R buttons to cancel the muting.

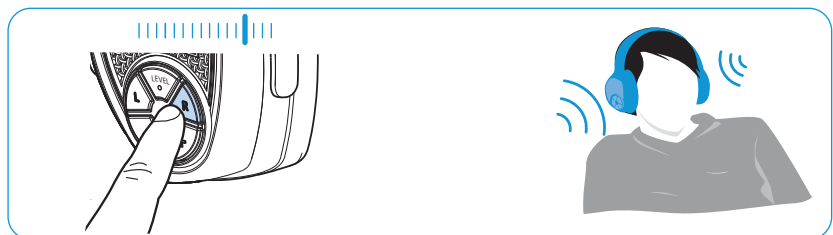
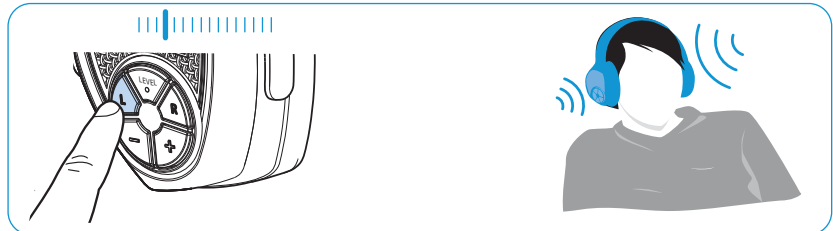


 If the headphones are muted for 15 minutes, the headphones switch off automatically to save energy.

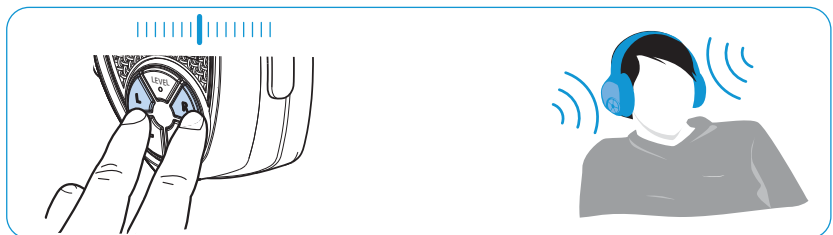
## Adjusting the balance

The balance buttons allow you to adjust the volume on the left or right channel of your headphones. Adjust the balance so that you hear comfortably or equally well with both ears.

- ▶ Press the Balance **R** button or the Balance **L** button to increase or decrease the volume on your right (**R**) or left (**L**) ear.  
When the minimum or maximum balance setting is reached, you hear a beep in the headphones.



- ▶ Press the Balance **R/L** buttons simultaneously to equalize the volume on both ears.

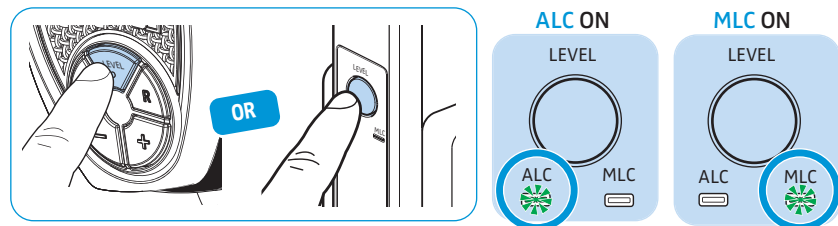


## Controlling the input level of analog signals

The RS 185 headphone system offers two modes (Automatic Level Control **ALC**/Manual Level Control **MLC**) for controlling the input level of analog signals going through the system.

Level control	Definition
Automatic Level Control <b>ALC</b>	The Automatic Level Control <b>ALC</b> automatically adjusts the sensitivity of the analog input. Using <b>ALC</b> avoids undesired volume jumps when you switch from one audio device to another, or when you click from one music track to the next on your playlist.
Manual Level Control <b>MLC</b>	The Manual Level Control <b>MLC</b> allows you to manually adjust the sensitivity of the analog input. Proper setting of the input level contributes to excellent and compression-free audio experience.

- ▶ Press the **LEVEL** button on the headphones or on the transmitter. The audio level toggles between the automatic and manual modes, as indicated by the **ALC**, **MLC** LEDs.



## Using the Manual Level Control (MLC) mode



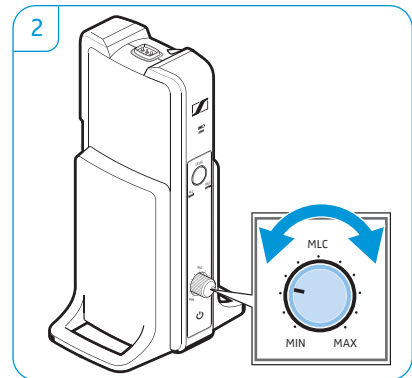
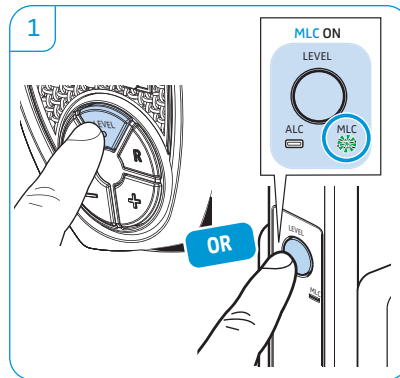
### WARNING

#### Danger due to high volume levels

Before putting on the headphones and before toggling between the level modes, adjust the volume on the headphones to a low level. Toggling between different modes may cause an enormous volume jump that can possibly damage your hearing.

Follow these steps to adjust the signal of your analog audio input.

- 1 Press the **LEVEL** button on the headphones or on the transmitter until the Manual Level Control (**MLC**) mode becomes active. The **MLC** LED indicator lights up green. If the audio level from your source is too high and exceeds the maximum permitted level, the sound gets distorted and the **MLC** LED indicator changes to red.
- 2 Use the **MLC** rotary knob to manually adjust the audio level. If the maximum permitted level is exceeded, turn the knob counterclockwise and position it to the point just before where the **MLC** LED indicator changes to red. This point means that you have reached the optimum settings for the audio level.






## Pairing one or several headphones to the transmitter

The headphones and the transmitter enclosed in this package have been paired from the factory. The following procedure is only necessary if you have cleared all pairing information from your wireless headphone system and you want to revive the lost pairing, or if you want to pair another set of headphones to the transmitter.

You can connect up to 2 paired headphones simultaneously with your TR 185 transmitter.

- ▶ Place the headphones on the headphones holder of the transmitter for a second.

The Charge status LED  on the transmitter lights up red. The headphones are paired to the transmitter.

