

APPLICATION FOR FCC CERTIFICATION

For

X Wire

Wireless Digital Microphone

Model: SKM 1091-D

FCC ID: DMOHD1OURD

Job #J99011998

Report # 99011998a

Date of Testing: May 3, 1999

Date of Report: May 17, 1999

Number of Pages: 25 + data pages

This report shall not be reproduced except in full, without written approval of Intertek Testing Services.

This report must not be used to claim product endorsement by NVLAP or any agency of the U.S. Government.

The results contained in this report were derived from measurements performed on the identified test samples. Any implied performance of other samples on this report is dependent on the representative of the samples tested.



Table of Contents

AUTHORIZATION LETTER..... 1

TEST REPORT..... 2

0.0 Summary of Test Results..... 2

1.0 General Description 3

 1.1 Product Description..... 3

 1.2 Related Submittal(s) Grants 4

 1.3 Test Methodology..... 4

 1.4 Test Facility..... 4

2.0 System Test Configuration 5

 2.1 Justification 5

 2.2 EUT Exercising Software..... 5

 2.3 System Test Configuration..... 6

 2.3.1 Support Equipment..... 6

 2.3.2 Block Diagram of Test Setup 6

 2.4 Equipment Modification 7

 2.5 Additions, deviations and exclusions from standards 7

3.0 Emission Results..... 8

 3.1 Field Strength Calculation..... 9

 3.3 Radiated Emission Data 10

 3.5 Radiated Emissions Configuration Photograph 11

 3.6 Conducted Emission Data 12

4.0 Out of Band Emission Plot 13

5.0 Antenna Requirement..... 14

6.0 Product Labeling..... 15

 6.1 Label Artwork 15

 6.2 Label Location..... 16

7.0 Technical Specifications..... 17

 7.1 Receiver Block Diagram 17

 7.2 Receiver Circuit Diagram..... 18

8.0 EUT Photographs..... 19

9.0 Instruction Manual 25

AUTHORIZATION LETTER

See Attached

X Wire, Wireless Digital Microphone
FCC ID: DMHOHD1OURD

Date of Test: May 3, 1999

TEST REPORT

0.0 Summary of Test Results

X Wire - MODEL: SKM 1091-D FCC ID: DMHOHD1OURD

TEST	REFERENCE	RESULTS
Radiated Emission	15.249	Complies
Conducted Emission	15.207	Not Applicable
Antenna Requirement	15.203	Complies

Test Engineer: _____
Xi-Ming Yang

Date: _____

Team Leader: _____
David Chernomordik

Date: _____

1.0 General Description

1.1 Product Description

The EUT is a wireless digital microphone. Please refer to the attached technical description for details.

1.2 Related Submittal(s) Grants

This is an Application for Certification of a low power transmitter. One transmitter is included in this Application. This specific report details the emission characteristics of transmitter.

The FCC ID for the receiver associated with this transmitter is DMOHD1OURD. The receivers are subject to the DoC process.

1.3 Test Methodology

Both AC mains line-conducted and radiated emission measurements were performed according to the procedures in ANSI C63.4 (1992). All measurements were performed in Open Area Test Sites. Preliminary scans were performed in the Open Area Test Sites only to determine worst case modes. For each scan, the procedure for maximizing emissions in Appendices D and E were followed. All Radiated tests were performed at an antenna to EUT distance of 3 meters, unless stated otherwise in the "**Justification Section**" of this Application.

1.4 Test Facility

The open area test site and conducted measurement facility used to collect the radiated data is Site 1. This test facility and site measurement data have been fully placed on file with the FCC and NVLAP accredited.

2.0 System Test Configuration

2.1 Justification

For emission testing, the equipment under test (EUT) was configured for testing in a typical fashion (as a customer would normally use it). During testing, all cables were manipulated to produce worst case emissions.

For the measurements, the EUT is attached to a cardboard box (if necessary) and placed on the wooden turntable. If the EUT attaches to peripherals, they are connected and operational (as typical as possible). The EUT is wired to transmit full power without modulation.

The signal is maximized through rotation and placement in the three orthogonal axes. The antenna height and polarization are varied during the search for maximum signal level. The antenna height is varied from 1 to 4 meters. Detector function is in peak mode. Radiated emissions are taken at three meters unless the signal level is too low for measurement at that distance. If necessary, a pre-amplifier is used and/or the test is conducted at a closer distance.

All readings are extrapolated back to the equivalent three meter reading using inverse scaling with distance.

2.2 EUT Exercising Software

The EUT exercise program used during radiated and conducted testing was designed to exercise the various system components in a manner similar to a typical use.

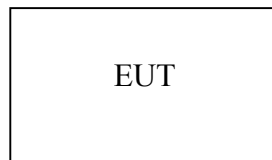
For emissions testing, the units were setup to transmit continuously to simplify the measurement methodology. Care was taken to ensure proper power supply voltages during testing.

2.3 System Test Configuration

2.3.1 Support Equipment

The EUT is a stand-alone unit.

2.3.2 Block Diagram of Test Setup



* = EUT	S = Shielded;	F = With Ferrite
** = No ferrites on video cable	U = Unshielded	

2.4 Equipment Modification

Any modifications installed before testing by X Wire will be incorporated in each production model sold/leased in the United States.

No modifications were installed by Intertek Testing Services.

2.5 Additions, deviations and exclusions from standards

No additions, deviations or exclusions have been made from standard.

3.0 Emission Results

AC line conducted emission measurements were performed from 0.45 MHz to 30 MHz. Analyzer resolution is 10 kHz or greater.

Radiated emission measurements were performed from 30 MHz to 5000 MHz. Analyzer resolution is 100 kHz or greater for 30 MHz to 1000 MHz, 1 MHz for >1000 MHz.

Data is included of the worst case configuration (the configuration which resulted in the highest emission levels). A sample calculation, configuration photographs and data tables of the emissions are included. All measurements were performed with peak detection unless otherwise specified.

3.1 Field Strength Calculation

The field strength is calculated by adding the Antenna Factor and Cable Factor, and subtracting the Amplifier Gain (if any) from the measured reading. The basic equation with a sample calculation is as follows:

$$FS = RA + AF + CF - AG$$

Where FS = Field Strength in dB(μ V/m)

RA = Receiver Amplitude (including preamplifier) in dB(μ V)

CF = Cable Attenuation Factor in dB

AF = Antenna Factor in dB/m

AG = Amplifier Gain in dB

In the following table(s), the reading shown on the data table reflects the preamplifier gain. An example for the calculations in the following table is as follows:

$$FS = RR + LF$$

where FS = Field Strength in dB(μ V/m)

RR = RA - AG in dB(μ V)

LF = CF + AF in dB

Assume a receiver reading of 52.0 dB(μ V) is obtained. The antenna factor of 7.4 dB/m and cable factor of 1.6 dB is added. The amplifier gain of 29 dB is subtracted, giving a field strength of 32 dB(μ V/m). This value in dB(μ V/m) was converted to its corresponding level in μ V/m.

$$RA = 52.0 \text{ dB}(\mu\text{V})$$

$$AF = 7.4 \text{ dB/m}$$

$$RR = 23.0 \text{ dB}(\mu\text{V})$$

$$CF = 1.6 \text{ dB}$$

$$LF = 9.0 \text{ dB}$$

$$AG = 29.0 \text{ dB}$$

$$FS = RR + LF$$

$$FS = 23 + 9 = 32 \text{ dB}(\mu\text{V/m})$$

$$\text{Level in } \mu\text{V/m} = \text{Common Antilogarithm } \{[32 \text{ dB}(\mu\text{V/m})]/20\} = 39.8 \mu\text{V/m}$$

3.3 Radiated Emission Data

The data on the following pages list the significant emission frequencies, the limit and the margin of compliance.

Results:	Passed by 0.4 dB at 924.6 MHz
-----------------	--------------------------------------

Note: a) All emissions not reported are at least 20 dB below the limits

3.5 Radiated Emissions Configuration Photograph



3.6 Conducted Emission Data

The data on the following pages list the significant emission frequencies, the limit and the margin of compliance.

Results:	Not Applicable. EUT is battery operated.
-----------------	---

Note: a) A complete scan from 0.45 - 30 MHz was made.

4.0 Out of Band Emission Plot

The following plots show the relative spurious emission level of the transmitter.

Plot #	Description
1	902-928 MHz, Low Channel
2	928-2000 MHz, Low Channel
3	2000-10000 MHz, Low Channel
4	902-928 MHz, Middle Channel
5	928-2000 MHz, Middle Channel
6	2000-10000 MHz, Middle Channel
7	902-928 MHz, High Channel
8	928-2000 MHz, High Channel
9	2000-10000 MHz, High Channel

5.0 Antenna Requirement

X	The transmitter uses a permanently connected antenna.
	The antenna is affixed to the EUT using a unique connector that allows for replacement of a broken antenna, but does NOT use a standard antenna jack or electrical connector.
	The EUT requires professional installation. Please refer to the attached documentation for details).

6.0 Product Labeling

6.1 Label Artwork

An engineering drawing of the label that will be permanently affixed to the unit is attached. This label will be attached to the unit at the location shown in Section 6.2.

6.2 Label Location



7.0 Technical Specifications

7.1 Receiver Block Diagram

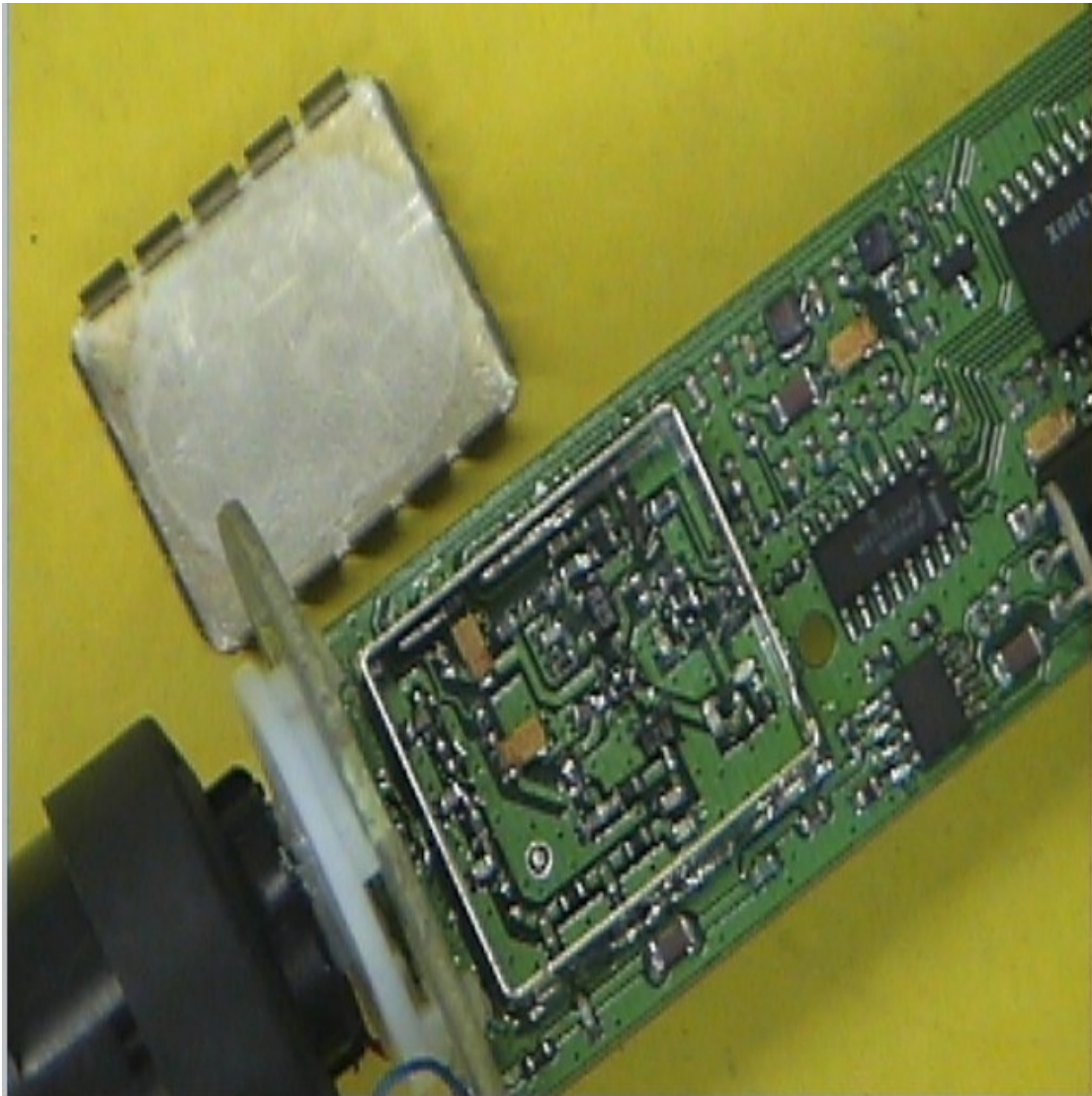
See attached page.

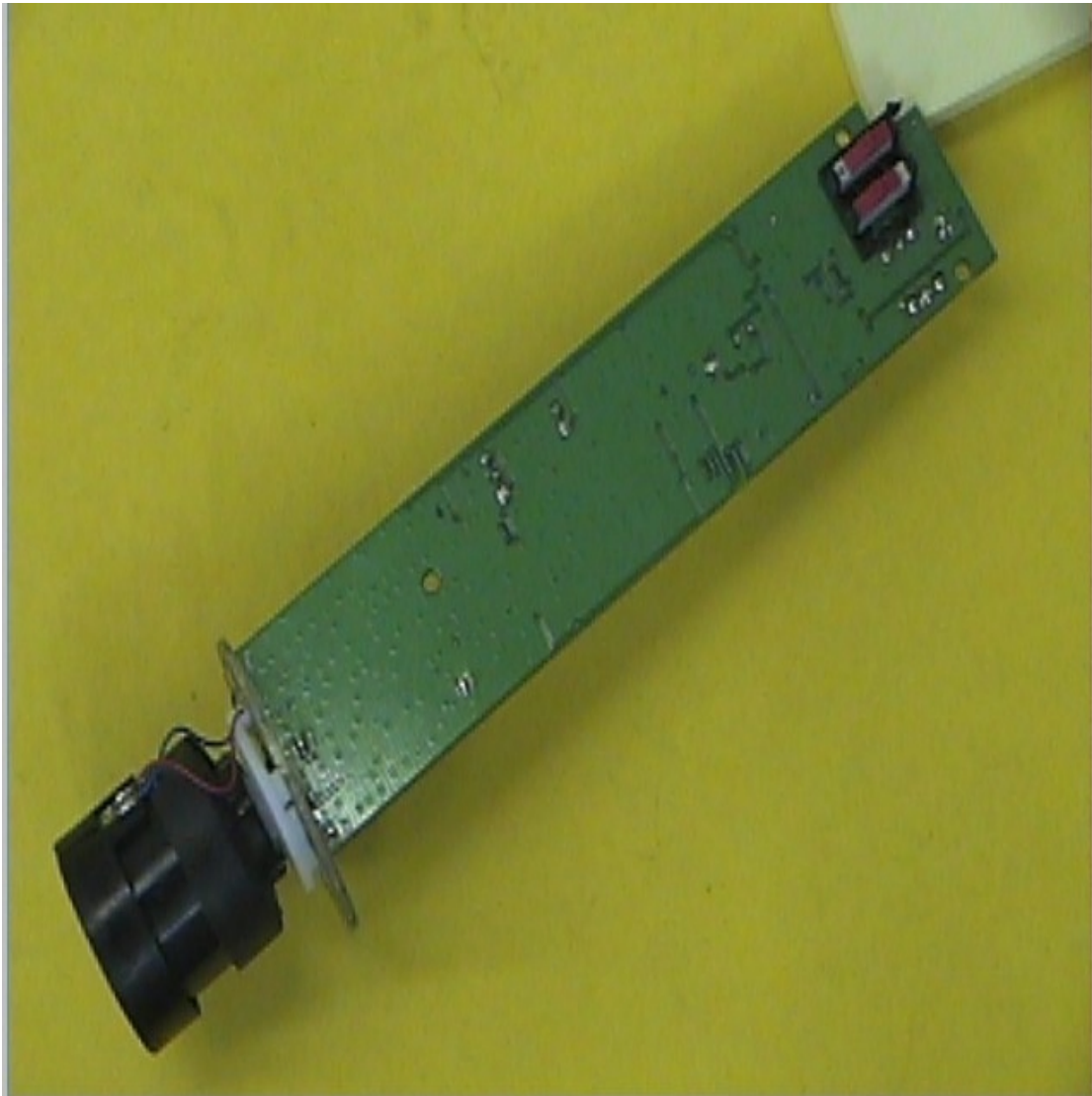
7.2 Receiver Circuit Diagram

See attached page.

8.0 EUT Photographs













9.0 Instruction Manual

Attached is a copy of the Instruction Manual.

This manual will be provided to the end-user with each unit sold/leased in the United States.