

Recognized by the  
Federal Communications Commission  
Anechoic chamber registration no.: 90462 (FCC)  
Anechoic chamber registration no.: IC 3463A-1  
TCB ID: DE 0001



Accredited by the  
German Accreditation Council  
DAR-Registration Number  
DAT-P-176/94-D1



Accredited Bluetooth<sup>®</sup> Test Facility (BQTF)

**Test report no.** : 1-0717-01-02-B/08  
**Applicant** : Sennheiser electronic  
GmbH & Co. KG  
**Type** : freePORT  
SKM 3-B / EM 1-B  
**Test Standard** : FCC Part 74.861  
RSS-123 Issue 1, Rev. 2  
**FCC ID** : DMOH2FPSKM  
**Certification No. IC** : 2099A-FPSKMEMB

*The Bluetooth word mark and logos are owned by the Bluetooth SIG,  
Inc. and any use of such marks by Cetecom ICT is under license*

## Table of contents

<b>1</b>	<b>GENERAL INFORMATION .....</b>	<b>3</b>
1.1.	ADMINISTRATIVE DATA OF THE TEST FACILITY .....	3
1.1.1	Identification of the testing laboratory.....	3
1.2.	NOTES.....	3
1.3	DETAILS OF APPLICANT .....	4
1.4	APPLICATION DETAILS.....	4
1.5	TEST ITEM.....	5
1.6	TEST STANDARDS .....	6
<b>2</b>	<b>STATEMENT OF COMPLIANCE .....</b>	<b>6</b>
2.1	SUMMARY OF MEASUREMENT RESULTS .....	6
2.2	TEST PROCEDURE .....	6
<b>3</b>	<b>MEASUREMENTS AND RESULTS.....</b>	<b>7</b>
3.1	OUTPUT POWER (RADIATED) FCC RULE PART 74.861 (E)(1)(II).....	7
3.2	AFC FREQUENCY ERROR VS. VOLTAGE FCC RULE PART 74.861 .....	10
3.3	AFC FREQUENCY ERROR VS. TEMPERATURE.....	10
3.4	CHARACTERISTICS OF THE AUDIO MODULATION CIRCUITRY FCC RULE PART 74 .861(E3).....	11
3.5	OCCUPIED BANDWIDTH FCC RULE PART 74.861(E)(3), (5)/ SEC. 2.1049 .....	12
3.6	EMISSION MASK FCC 74 861(E)(6) .....	14
3.7	RADIATED EMISSIONS FCC RULE PART 74 SUBPART H.....	15
3.8	FCC PART 15 SUBPART B .....	19
3.9	SPURIOUS RADIATION RADIATED § 15.109 .....	20
3.10	SPURIOUS RADIATION CONDUCTED § 15.111 .....	21
3.11	CONDUCTED EMISSIONS § 15.107/207 .....	24
<b>4</b>	<b>USED TESTEQUIPMENT .....</b>	<b>25</b>
<b>5</b>	<b>PHOTOGRAPHS OF TEST SETUP .....</b>	<b>28</b>
	Test setup .....	28
<b>6</b>	<b>PHOTOGRAPHS OF TEST EQUIPMENT .....</b>	<b>31</b>

## 1 General information

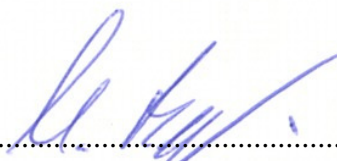
### 1.1 Administrative data of the test facility

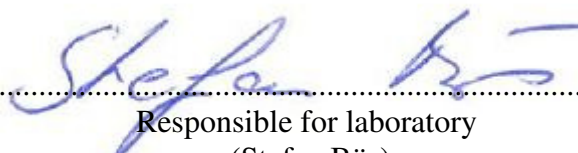
#### 1.1.1 Identification of the testing laboratory

Company name:	Cetecom ICT Services GmbH
Address:	Untertürkheimerstr. 6-10 D-66117 Saarbruecken Germany
Laboratory accreditation:	DAR-Registration No. DAT-P-176/94-D1 Bluetooth Qualification Test Facility (BQTF) Federal Communications Commission (FCC) Identification/Registration No : 90462
Responsible for testing laboratory:	Stefan Bös Phone: +49 681 598 0 Fax: +49 681 598 9075 email: info@ict.cetecom.de

### 1.2 Notes

The test results of this test report relate exclusively to the test item specified in 1.5. The CETECOM ICT Services GmbH does not assume responsibility for any conclusions and generalizations drawn from the test results with regard to other specimens or samples of the type of the equipment represented by the test item. The test report may only be reproduced or published in full. Reproduction or publication of extracts from the report requires the prior written approval of the CETECOM ICT Services GmbH.

  
.....  
Responsible for testing  
(Michael Berg)

  
.....  
Responsible for laboratory  
(Stefan Bös)

## 1.3 Details of Applicant

Name	:	Sennheiser electronic GmbH& Co. KG
Address	:	Am Labor 1
City	:	D-30900 Wedemark
Country	:	Germany
Phone	:	+49(0) 5130 600-0
Fax	:	+49(0) 5130 600-300
Contact	:	Mr. Volker Bartsch
Phone	:	+49(0) 5130 600-465
Fax	:	+49(0) 5130 600-330
e-mail	:	

## 1.4 Application Details

Date of receipt of application	:	2008-07-28
Date of receipt of test item	:	2008-08-18
Date(s) of test	:	2008-08-25 to 2008-08-28
Date of report	:	2008-08-27

## 1.5 Test Item

Type of equipment	:	wireless microphone
Type name	:	freePORT SKM 3-B / EM 1-B
Serial number	:	-
Manufacturer	:	Sennheiser electronic GmbH& Co. KG
Address	:	Am Labor 1
City	:	D-30900 Wedemark
Country	:	Germany
Frequency Range	:	691-693 MHz
Measured Channels	:	691.400 MHz
Channel 1	:	691.400 MHz
Type of modulation	:	143KF3E (2x max. Audio Frequency + 2x max. FM Deviation)
Number of channels	:	4
Antenna Type	:	Tx: $\lambda/4$ helical antenna      Rx : rod aerial antenna 10cm
Power supply (normal)	:	Tx: 9.0V DC Battery      Rx: 120V AC / 13V DC power supply
Output power	:	Max. 5.6 mW
Field strength	:	100.5 dB $\mu$ V/m @ 3m
Occupied bandwidth	:	143.3 kHz
Transmitter spurious	:	-38.9 dBm / 128.8 nW
Receiver spurious	:	39.7 dB $\mu$ V/m @ 3m
Temperature range	:	-30°C to +70°C
FCC ID	:	DMOH2FPSKM
Certification No. IC	:	2099A-FPSKMEMB
Open Area Test Site IC No.	:	IC 3463A-1
IC Standards	:	RSS123, Issue 1, Rev.2

### Remark:

We were not able to carry out conducted measurements because the antennas are fixed installed and there is no antenna connector available.

### ATTESTATION:

#### DECLARATION OF COMPLIANCE:

I declare that the testing was performed or supervised by me; that the test measurements were made in accordance with the above-mentioned Industry Canada standard(s); and that the equipment identified in this application has been subjected to all the applicable test conditions specified in the Industry Canada standards and all of the requirements of the standard have been met.

### Laboratory Manager :

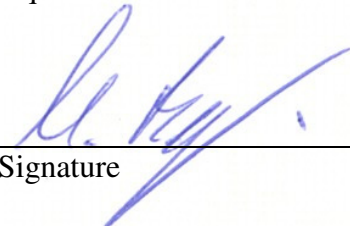
2008-08-27

Michael Berg

Date

Name

Signature



## 1.6 Test Standards

<b>FCC:</b>	<b>FCC Part 74 Subpart H (October 2006)</b>
	<b>EXPERIMENTAL RADIO, AUXILIARY, SPECIAL BROADCAST AND OTHER PROGRAM DISTRIBUTIONAL SERVICES</b>
<b>IC:</b>	<b>CANADA RSS-123 Issue 1, Rev. 2 (November 6, 1999)</b>
	<b>Low Power Licensed Radiocommunication Devices</b>

## 2 Statement of Compliance

No deviations from the technical specification(s) were ascertained in the course of the tests performed.

### 2.1 Summary of Measurement Results

Section in this Report	Test Name	Verdict
3.1	RF Power Output	pass
3.2	Frequency Stability	pass
3.3	Radiated Emissions	pass
3.4	Receiver Radiated Emissions	pass
3.5	Conducted Spurious Emissions	pass
3.6	Block Edge Compliance	pass
3.7	Occupied Bandwidth	pass
3.9	Receiver Spurious Radiation Radiated § 15.109	pass
3.10	Receiver Spurious Radiation Radiated § 15.111	not applicable
3.11	Conducted emissions § 15.107/207	pass

### 2.2 Test Procedure

All tests were done in accordance with the EIA/TIA 603.

The substitution method ( TIA/EIA 603) was used.

This products fulfills also the requirements for CANADA RSS-123

No deviations from the technical specification(s) were ascertained in the course of the tests performed.

**Final verdict : PASS**

## 3 Measurements and results

### 3.1 Output Power (radiated) FCC Rule Part 74.861 (e)(1)(ii)

#### Method of measurement:

#### Measuring the EIRP of Spurious/Harmonic Emissions using Substitution Method

- (a) The measurements was performed with full rf output power and modulation.
- (b) Test was performed at listed 3m test site (listed with FCC, IC).
- (c) The transmitter under test was placed at the specified height on a non-conducting turntable (80 cm height)
- (d) The BICONILOG antenna (20 MHz to 1 GHz) or HORN antenna (1 GHz to 18 GHz) was used for measuring.
- (e) Load an appropriate correction factors file in EMI Receiver for correcting the field strength reading level  
Total Correction Factor recorded in the EMI Receiver = Cable Loss + Antenna Factor  
 $E \text{ (dBuV/m)} = \text{Reading (dBuV)} + \text{Total Correction Factor (dB/m)}$
- (f) Set the EMI Receiver and #2 as follows:
  - Center Frequency: test frequency
  - Resolution BW: 100 kHz
  - Video BW: same
  - Detector Mode: positive
  - Average: off
  - Span: 3 x the signal bandwidth
- (g) The test antenna was lowered or raised from 1 to 4 meters until the maximum signal level was detected.
- (h) The transmitter was rotated through 360 o about a vertical axis until a higher maximum signal was received.
- (i) The test antenna was lowered or raised again from 1 to 4 meters until a maximum was obtained. This level was recorded.
- (j) The recorded reading was corrected to the true field strength level by adding the antenna factor, cable loss and subtracting the pre-amplifier gain.
- (k) The above steps were repeated with both transmitters' antenna and test receiving antenna placed in vertical and horizontal polarization. Both readings with the antennas placed in vertical and horizontal polarization shall be recorded.
- (l) Repeat for all different test signal frequencies

#### Measuring the EIRP of Spurious/Harmonic Emissions using Substitution Method

- (a) Set the EMI Receiver (for measuring E-Field) and Receiver #2 (for measuring EIRP) as follows:
  - Center Frequency : equal to the signal source
  - Resolution BW : 10 kHz
  - Video BW : same
  - Detector Mode : positive
  - Average : off
  - Span : 3 x the signal bandwidth
- (b) Load an appropriate correction factors file in EMI Receiver for correcting the field strength reading level  
Total Correction Factor recorded in the EMI Receiver = Cable Loss + Antenna Factor  
 $E \text{ (dBuV/m)} = \text{Reading (dBuV)} + \text{Total Correction Factor (dB/m)}$
- (c) Select the frequency and E-field levels for ERP/EIRP measurements.
- (d) Substitute the EUT by a signal generator and one of the following transmitting antenna (substitution antenna):  
.DIPOLE antenna for frequency from 30-1000 MHz or .HORN antenna for frequency above 1 GHz }.

- (e) Mount the transmitting antenna at 1.5 meter high from the ground plane.
  - (f) Use one of the following antenna as a receiving antenna: .DIPOLE antenna for frequency from 30-1000 MHz or .HORN antenna for frequency above 1 GHz }.
  - (g) If the DIPOLE antenna is used, tune it's elements to the frequency as specified in the calibration manual.
  - (h) Adjust both transmitting and receiving antenna in a VERTICAL polarization.
  - (i) Tune the EMI Receivers to the test frequency.
  - (j) Lower or raise the test antenna from 1 to 4 meters until the maximum signal level was detected.
  - (k) The transmitter was rotated through 360 o about a vertical axis until a higher maximum signal was received.
  - (l) Lower or raise the test antenna from 1 to 4 meters until the maximum signal level was detected.
  - (m) Adjust input signal to the substitution antenna until an equal or a known related level to that detected from the transmitter was obtained in the test receiver.
  - (n) Record the power level read from the Average Power Meter and calculate the ERP/EIRP as follows:  
 **$P = P1 - L1 = (P2 + L2) - L1 = P3 + A + L2 - L1$**   
 **$EIRP = P + G1 = P3 + L2 - L1 + A + G1$**   
 **$ERP = EIRP - 2.15 \text{ dB}$**   
Total Correction factor in EMI Receiver # 2 =  $L2 - L1 + G1$
- Where: P: Actual RF Power fed into the substitution antenna port after corrected.  
P1: Power output from the signal generator  
P2: Power measured at attenuator A input  
P3: Power reading on the Average Power Meter  
EIRP: EIRP after correction  
ERP: ERP after correction
- (o) Adjust both transmitting and receiving antenna in a HORIZONTAL polarization, then repeat step (k) to (o)
  - (p) Repeat step (d) to (o) for different test frequency
  - (q) Repeat steps (c) to (j) with the substitution antenna oriented in horizontal polarization.
  - (r) Actual gain of the EUT's antenna is the difference of the measured EIRP and measured RF power at the RF port. Correct the antenna gain if necessary.:



**Results:**

TEST CONDITIONS		TRANSMITTER ERP (mW)					
		691.400					
Frequency (MHz)							
T <sub>nom</sub> (+23)°C	V <sub>nom</sub> 9.0 V	<b>5.6</b>					
antenna gain		0 dB					
Maximum deviation from output power under extreme test conditions (dBc)		±0.2 dB					
Measurement uncertainty		±0.5dB					

**Sample calculation:**

Freq	SA Reading	SG Setting	Ant. gain	Dipol gain	Cable loss	ERP Result	ERP Result		
MHz	dBμV	dBm	dB	dBd	dB	dBm	mW		
691.4	104.5	10.4	-	0.0	2.9	7.5	5.6		

**ERP = SG (dBm) - Cable Loss (dB) + Ant. gain (dBd)**

**LIMIT**

**FCC Rule Part 74.861**

Frequency range MHz	Power level conducted mW
54-72, 76-88, 174-216	50
470-608, 614-806	250

### 3.2 AFC Frequency Error vs. Voltage

### FCC Rule Part 74.861

**Method of measurement:**

The EUT was fixed in test fixture to a resistive coaxial attenuator of normal load impedance, and the un-modulated carrier was measured by means of a spectrum analyzer .

The input voltage was varied in an range from 2.2V to 3.1V and the maximum change in frequency was noted within one minute.

The temperature tests were performed for each frequency range on one channel

691.400 MHz

Voltage (V)	Frequency Error (Hz)	Frequency Error (%)	Frequency Error (ppm)
6.5	-278	-0,00004021	-0,4021
7.0	-286	-0,00004137	-0,4137
7.5	-286	-0,00004137	-0,4137
8.0	-289	-0,00004180	-0,4180
8.5	-289	-0,00004180	-0,4180
9.0	-289	-0,00004180	-0,4180

**LIMIT**

**FCC Rule Part 74.861(4)**

The frequency tolerance of the transmitter shall be 0.005 percent
---

### 3.3 AFC Frequency Error vs. Temperature

**Method of measurement:**

The EUT was connected to a resistive coaxial attenuator of normal load impedance, and the un-modulated carrier was measured by means of a spectrum analyzer . With all power removed, the temperature was decreased to -30°C and permitted to stabilize for three hours . Power was applied and the maximum change in frequency was noted within one minute. With power OFF , the temperature was raised in 10°C steps. The sample was permitted to stabilize at each step for at least one-half hour. Power was applied and the maximum frequency error was noted within one minute . The temperature tests were performed for each frequency range on one channel

691.400 MHz

TEMPERATURE (°C)	Frequency Error (Hz)	Frequency Error (%)	Frequency Error (ppm)
-30	-8456	-0,00122303	-12,2303
-20	-6241	-0,00090266	-9,0266
-10	-2365	-0,00034206	-3,4206
±0.0	-1189	-0,00017197	-1,7197
+10	-499	-0,00007217	-0,7217
+20	-289	-0,00004180	-0,4180
+30	-182	-0,00002632	-0,2632
+40	+154	0,00002227	0,2227
+50	+286	0,00004137	0,4137

**LIMIT**

**FCC Rule Part 74.861**

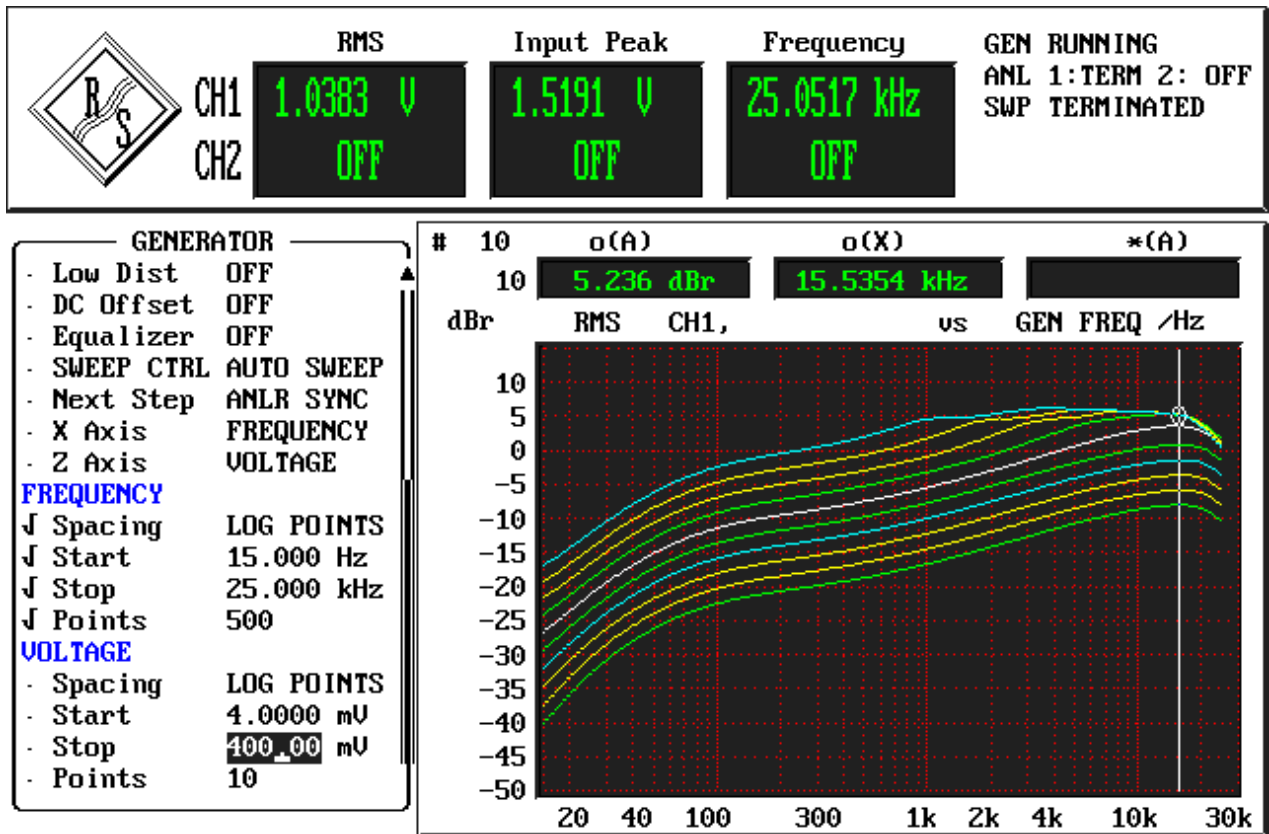
The frequency tolerance of the transmitter shall be 0.005 percent
---

**3.4 Characteristics of the Audio Modulation Circuitry FCC Rule Part 74 .861(e3)**

**Method of measurement :**

The audio frequency responds was measured in accordance with EIA/TIA 603.

The plots shows 10 curves with different modulation levels, starting from 100.0mV to 8000 mV (30%+20 dB Modulation), the frequency is varied from 20 Hz to 25 kHz .



max. measured frequency deviation : 54 kHz

this measurement is valid for all channels

Limit: max Deviation ±75kHz

**3.5 Occupied Bandwidth**

**FCC Rule Part 74.861(e)(3), (5)/ Sec. 2.1049**

**Test method :**

The audio frequency responds was measured in accordance with EIA/TIA 603.

Data in the plots show that all sidebands between 50 & 100% for the authorized bandwidth are attenuated by at least 25dB. From 100 to 250% of the authorize3d bandwidth they are attenuated by at least 35dB and beyond 250% 43 log(Po) dB. The plot shows the transmitter modulated with 15000 Hz (the highest modulation frequency), adjusted for 50% modulation plus 16 dB. The spectrum analyzer was set with the un-modulated carrier at the top of the screen. The test procedure diagram and occupied bandwidth plots follow.

TEST CONDITIONS		OCCUPIED BANDWIDTH ( kHz )					
Frequency (MHz)		691.400					
T <sub>nom</sub> (+23)°C	V <sub>nom</sub> 9.0 V	143.287					
max. Deviation (FM)		kHz					
Measurement uncertainty		±0.5%					

**Limits**

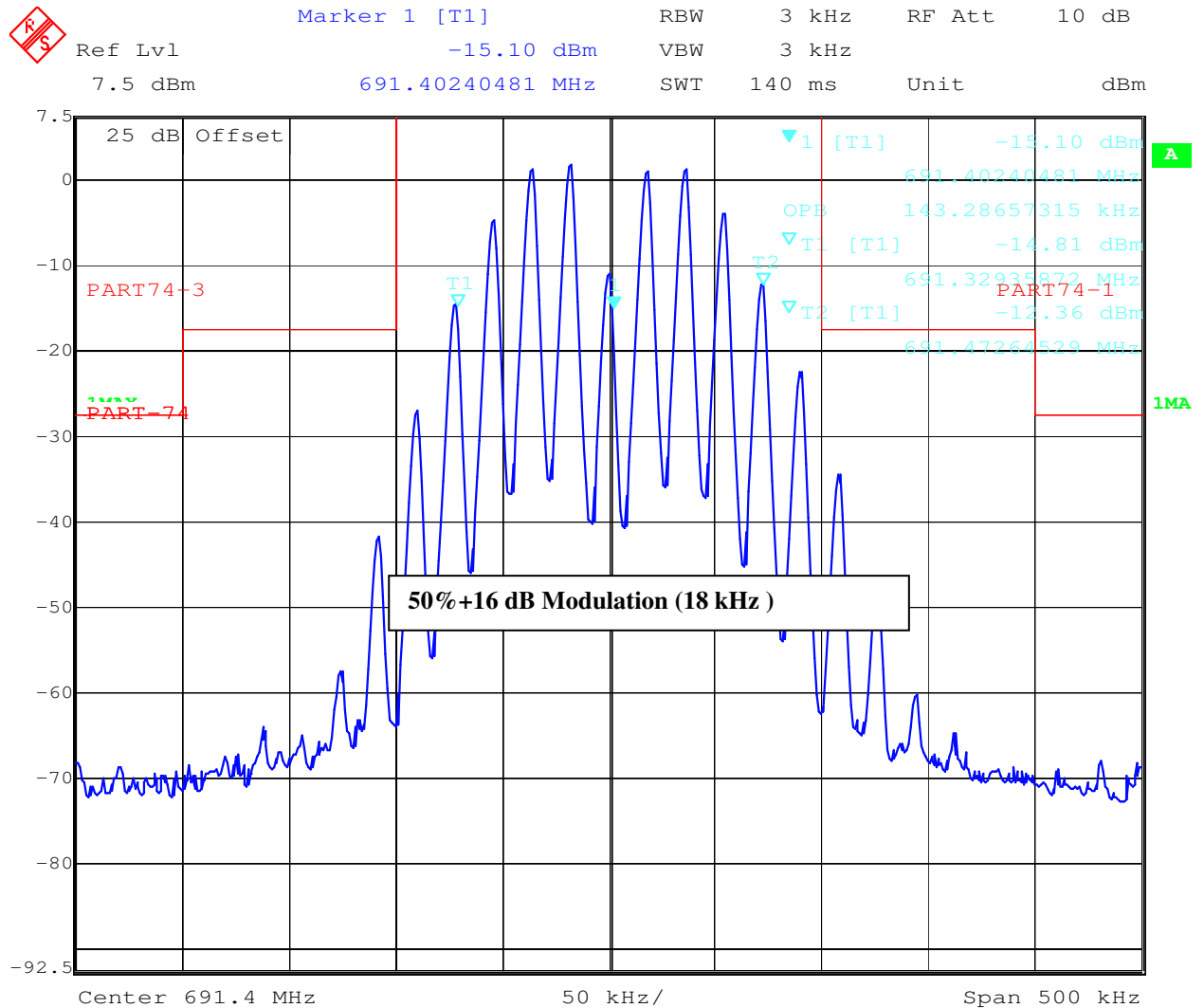
**FCC Rule Part 74.861(e)(5)**

The operating bandwidth shall not exceed 200 kHz

## OCCUPIED BANDWIDTH

## FCC Rule Part 74.861(e)(3), (5)/ Sec. 2.989

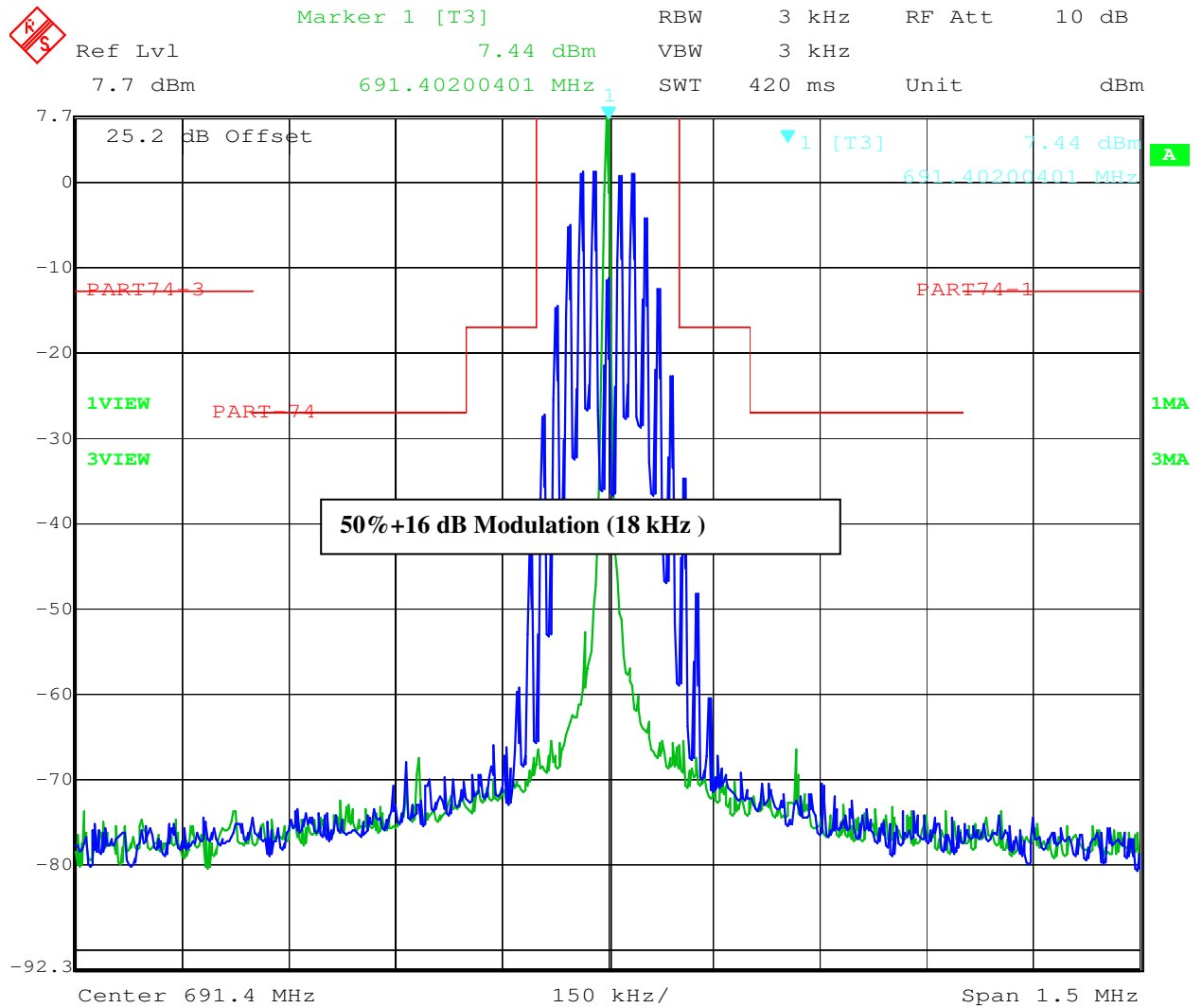
Frequency: **691.400 MHz** / max. deviation :  $\pm 54\text{kHz}$  (Limit  $\pm 75\text{ kHz}$ )



Date: 28.AUG.2008 07:58:14

**3.6 Emission mask FCC 74 861(e)(6)**

**691.400 MHz**



Date: 28.AUG.2008 08:01:07

**Limits**

**FCC Rule Part 74.861(e)(6)**

f ± 100 kHz to f ± 200 kHz	f ± 200 kHz to f ± 500 kHz	f ± 500 kHz
25 dBc	35 dBc	-43 +10 log <sub>10</sub> (mean output power in watts) dB below the mean output power

## 3.7 Radiated Emissions

## FCC Rule Part 74 subpart H

### Test procedure

- 1). On a test site, the EUT shall be placed on a turntable, and in the position closest to the normal use as declared by the user.
- 2). The test antenna shall be oriented initially for vertical polarization located 3m from the EUT to correspond to the frequency of the transmitter.
- 3). The output of the test antenna shall be connected to the measuring receiver and either a peak or quasi-peak detector was used for the measurement as indicated on the report. The detector selection is based on how close the emission level was approaching the limit.
- 4). The transmitter shall be switched on, if possible, without the modulation and the measurement receiver shall be tuned to the frequency of the transmitter under test.
- 5). The test antenna shall be raised and lowered through the specified range of height until a maximum signal level is detected by the measuring receiver.
- 6). The transmitter shall then be rotated through 360° in the horizontal plane, until the maximum signal level is detected by the measuring receiver.
- 7). The test antenna shall be raised and lowered again through the specified range of height until a maximum signal level is detected by the measuring receiver.
- 8). The maximum signal level detected by the measuring receiver shall be noted.
- 9). The transmitter shall be replaced by a substitution antenna (tuned dipole for f less than 1GHz and horn for frequency higher than 1GHz).
- 10). The substitution antenna shall be oriented for vertical polarization and the length (if a dipole antenna is used) of the substitution antenna shall be adjusted to correspond to the frequency of the transmitter.
- 11). The substitution antenna shall be connected to a calibrated signal generator.
- 12). If necessary, the input attenuator setting of the measuring receiver shall be adjusted in order to increase the sensitivity of the measuring receiver.
- 13). The test antenna shall be raised and lowered through the specified range of the height to ensure that the maximum signal is received.
- 14). The input signal to the substitution antenna shall be adjusted to the level that produces a level detected by the measuring receiver, that is equal to the level noted while the transmitter radiated power was measured, corrected for the change of input attenuation setting of the measuring receiver.
- 15). The input level to the substitution antenna shall be recorded as power level in dBm, corrected for any change of input attenuator setting of the measuring receiver.
- 16). The measurement shall be repeated with the test antenna and the substitution antenna oriented for horizontal polarization.
- 17). The measure of the effective radiated power is the larger of the two levels recorded, at the input to the substitution antenna, corrected for the gain of the substitution antenna if necessary.
- 18). Repeat above substitution measurement procedure for fundamental and all harmonica emissions.

Freg	SA Reading	SG Setting	Ant. gain	Dipole gain	Cable loss	ERP Result	Limit	Margin	Pol
MHz	dB $\mu$ V	dBm	dB <i>i</i>	dB <i>d</i>	dB	dBm	dBm	dBm	H/V
1382.8	55.5	-44.4	6.9		3.8	-41.3	-13	28.3	
2074.2	45.6	-51.1	8.8		4.3	-46.6	-13	33.6	
2765.6	42.5	-52.7	9.9		4.7	-47.5	-13	34.5	
4148.4	45.8	-43.9	10.5		5.5	-38.9	-13	25.9	
4839.8	33.1	-52.3	11.1		6.2	-47.4	-13	34.4	
5531.2	37.3	-47.2	11.7		6.5	-42.0	-13	29.0	
6222.6	42.4	-43.9	11.7		6.9	-39.1	-13	26.1	

all results worst case

**Limits**

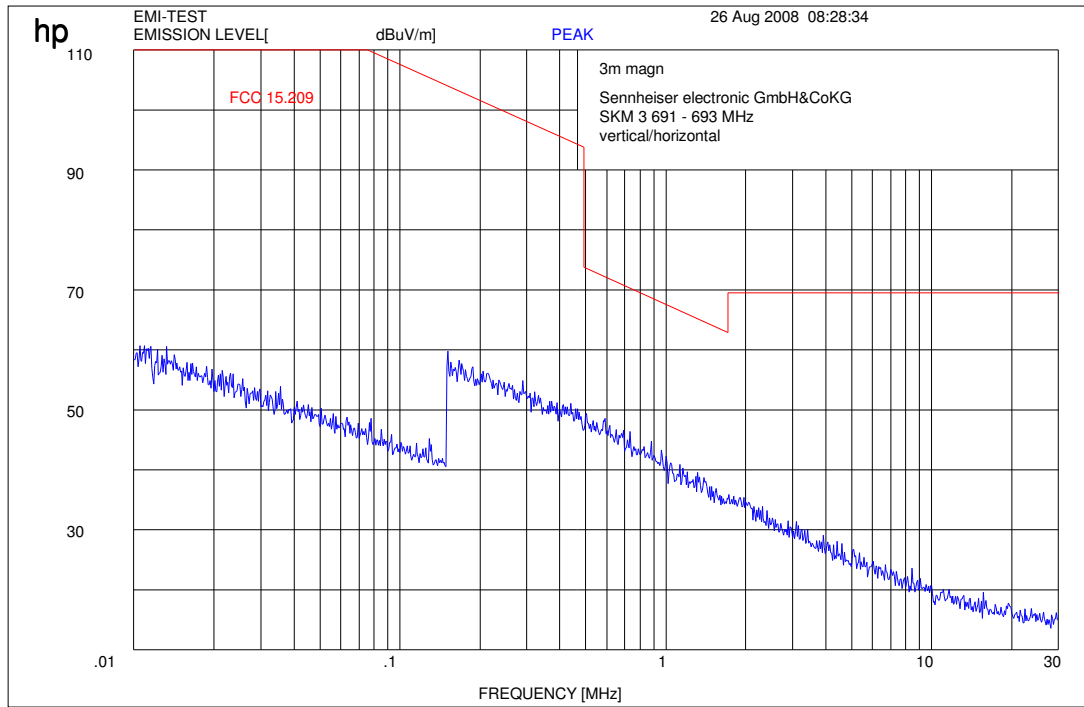
**FCC Rule Part 74.861(e)(6)**

$f \pm 100$ kHz to $f \pm 200$ kHz	$f \pm 200$ kHz to $f \pm 500$ kHz	$f \pm 500$ kHz
25 dBc	35 dBc	-43 +10 log <sub>10</sub> (mean output power in watts) dB below the mean output power



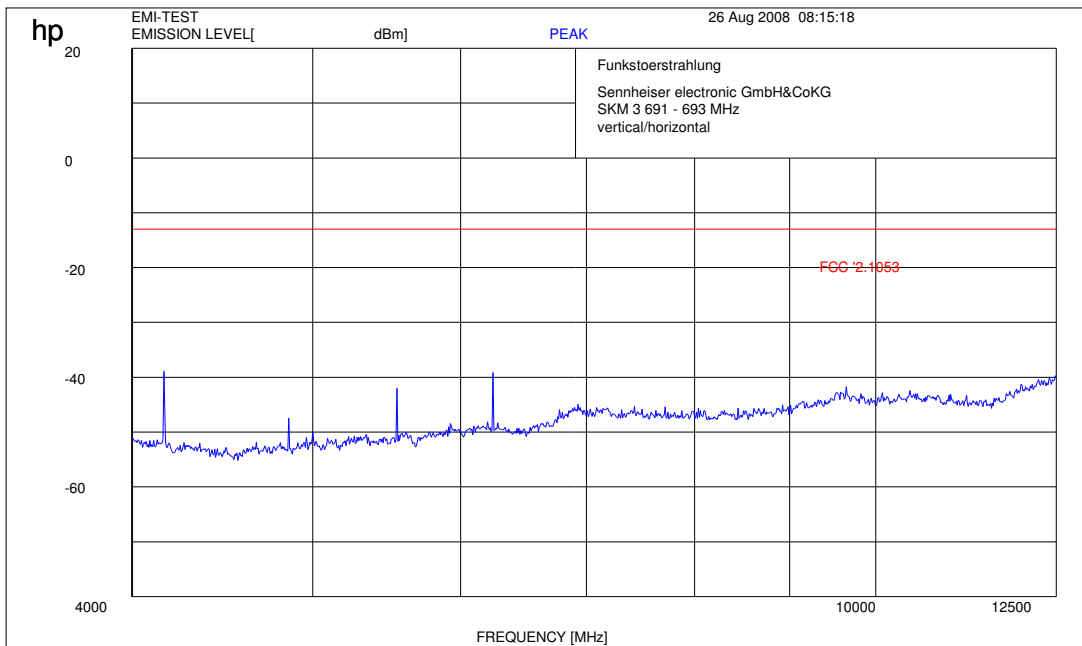
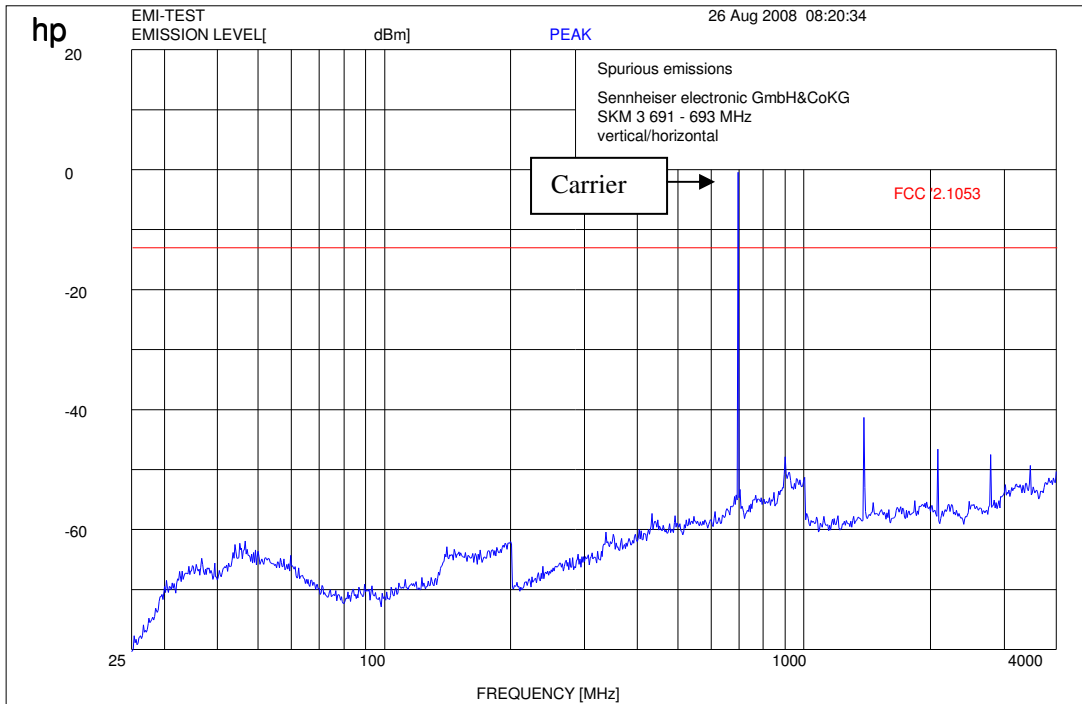
**RADIATED EMISSIONS**  
(this plot is valid for all channels)  
*Part 15.209 Magnetics*

**FCC Rule Part 74 subpart H**



## RADIATED EMISSIONS 691.400 MHz

## FCC Rule Part 74 subpart H



### **3.8 FCC Part 15 Subpart B**

The radiated measurements are performed in vertical and horizontal plane in the frequency range from 9 kHz to 20 GHz in semi-anechoic chambers. The EUT is positioned on a non-conductive support with a height of 0.80 m above a conductive ground plane that covers the whole chamber. The receiving antennas conform with specifications ANSI C63.2-1996 clause 15 and ANSI C63.4-2001 clause 4.1.5. These antennas can be moved over the height range between 1.0 m and 4.0 m in order to search for maximum field strength emitted from EUT. The measurement distances between EUT and receiving antennas are indicated in the test set-ups for the various frequency ranges. For each measurement, the EUT is rotated in all three axes until the maximum field strength is received.

The wanted and unwanted emissions are received by spectrum analyzers where the detector modes and resolution bandwidths over various frequency ranges are set according to requirement ANSI C63.4-2001 clause 4.2.

Antennas conform with ANSI C63.2-1996 item 15.

150 kHz - 30 MHz: Quasi Peak measurement, 9kHz Bandwidth, passive loop antenna.

30 MHz - 200 MHz: Quasi Peak measurement, 120KHz Bandwidth, biconical antenna

200MHz - 1GHz: Quasi Peak measurement, 120KHz Bandwidth, log periodic antenna

>1GHz: Average, RBW 1MHz, VBW 10 Hz, wave guide horn

All measurement settings are according to FCC 15.35, 15.209.

The product fulfills also the requirements for CANADA RSS-210

No deviations from the technical specification(s) were ascertained in the course of the tests performed.

**FINAL VERDICT : PASS**



**3.10 Spurious Radiation Conducted**

**§ 15.111**

Measurement not applicable

SPURIOUS EMISSIONS LEVEL (nW)								
691.400 MHz			MHz			MHz		
f (MHz)	Detector	Level (nW)	f (MHz)	Detector	Level (nW)	f (MHz)	Detector	Level (nW)
MHz			MHz			MHz		
<b>Measurement uncertainty</b>			<b>±3 dB</b>					

**RBW/VBW: 100 kHz**

**Measurement distance see table**

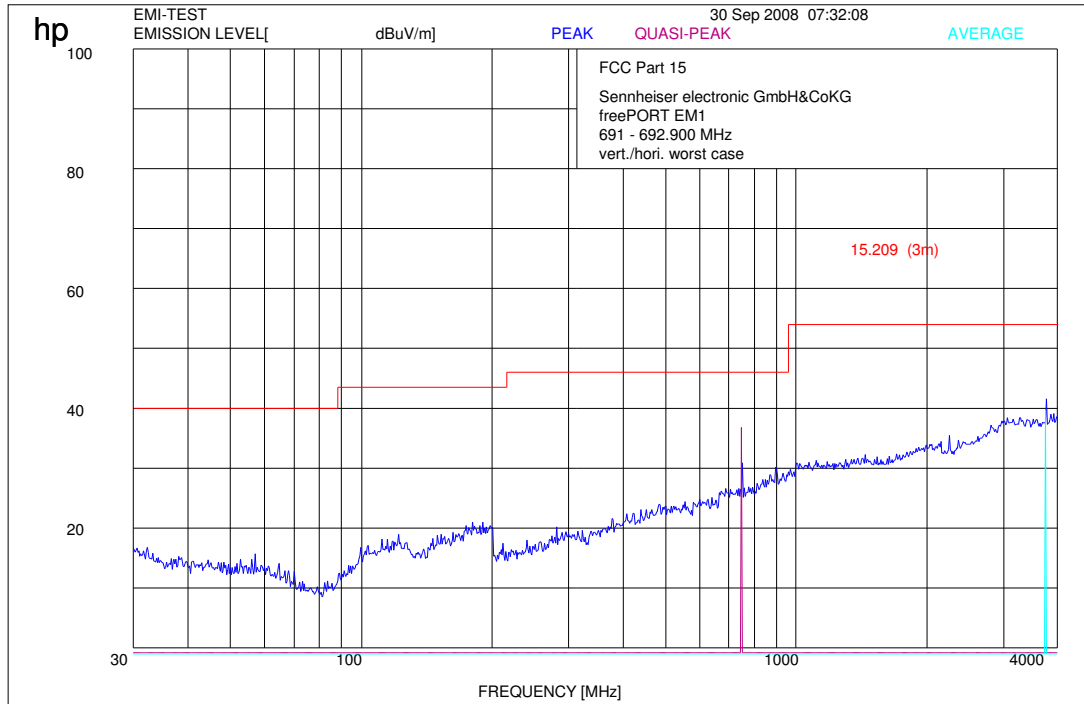
**Limits**

**SUBCLAUSE § 15.111**

Frequency (MHz)	Power
0.009 – 5000	2 nW

## RADIATED EMISSIONS (this plot is valid for all channels)

### § 15.109

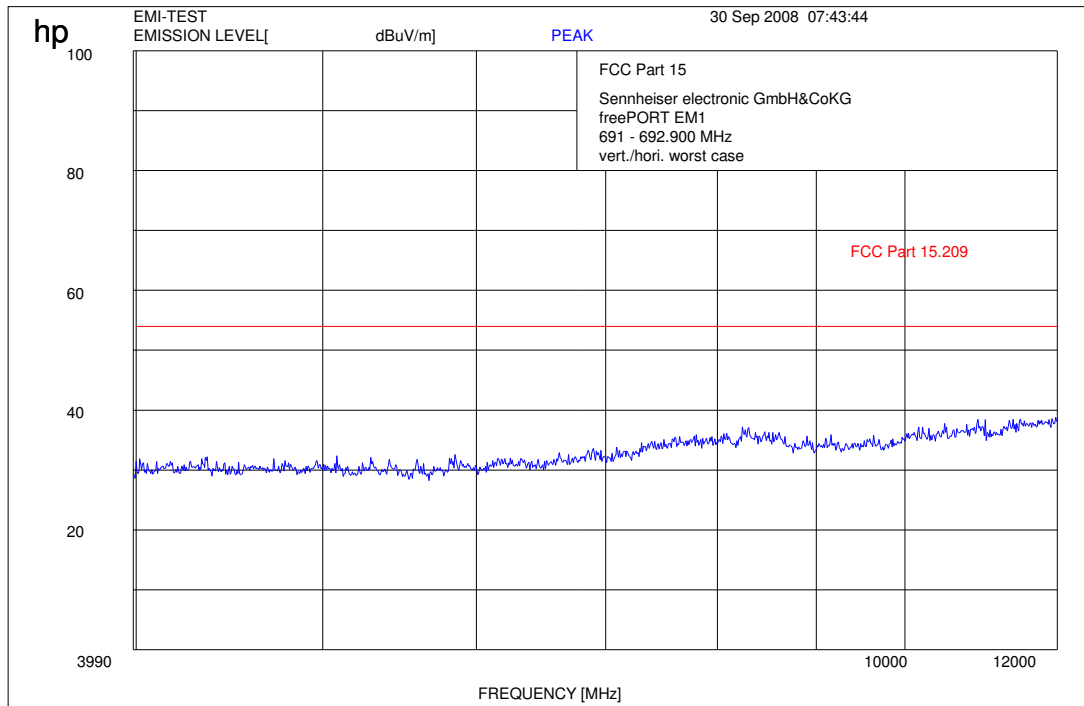


$f < 1 \text{ GHz} : \text{RBW/VBW: } 100 \text{ kHz}$

$f \geq 1 \text{ GHz} : \text{RBW/VBW: } 1 \text{ MHz}$

## RADIATED EMISSIONS

## § 15.109



$f < 1 \text{ GHz} : \text{RBW/VBW: } 100 \text{ kHz}$

$f \geq 1 \text{ GHz} : \text{RBW/VBW: } 1 \text{ MHz}$

## 3.11 Conducted emissions

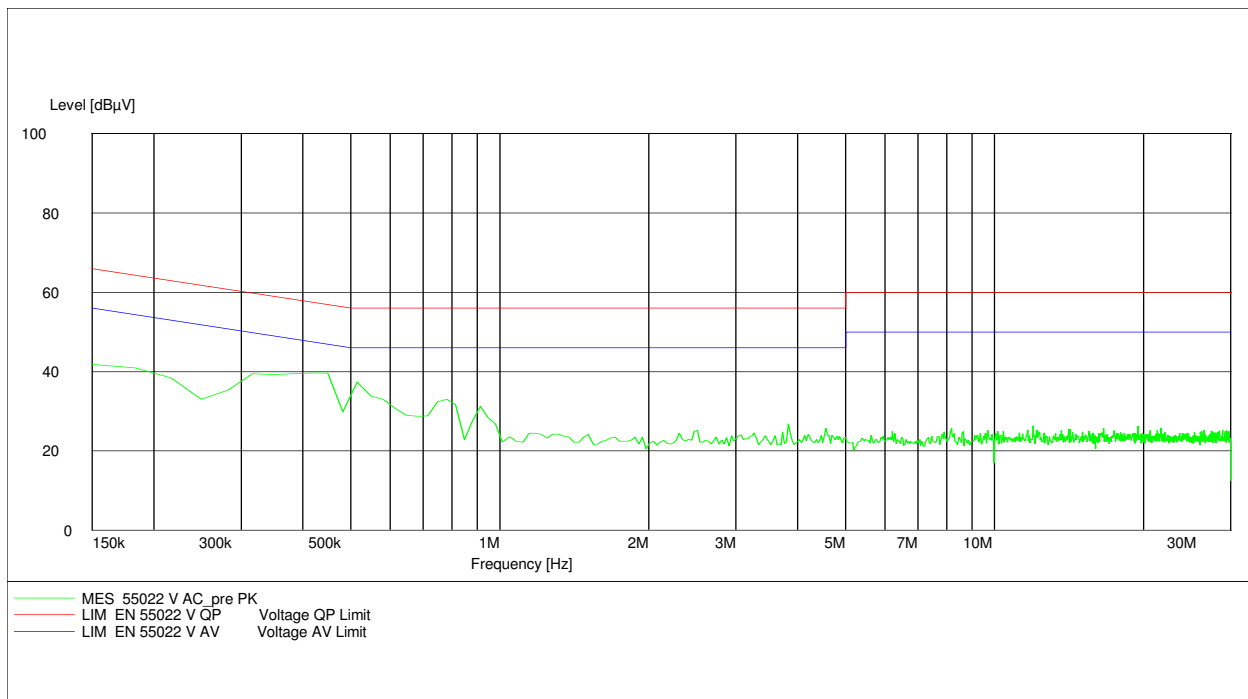
§ 15.107/207

### CISPR 22

EUT: EM1-A  
 Manufacturer: Sennheiser electronic GmbH & Co. KG  
 Operating Condition: normal  
 Test Site: CETECOM ICT Services Room 006  
 Operator: Berg  
 Test Specification: EN 55022 V / CISPR22  
 Power Supply: 110V / 60 Hz  
 Start of Test: 27.08.08 / 10:22:24

### SCAN TABLE: "EN 55022 V"

Short Description:			Voltage Mains 1.60			
Start	Stop	Step	Detector	Meas. Time	IF Bandw.	Transducer
Frequency	Frequency	Width				
150.0 kHz	30.0 MHz	7.5 kHz	MaxPeak	100.0 ms	10 kHz	ESH3-Z5 L1 1458
			Average			





## 4 Used Testequipment

To simplify the identification on each page of the test equipment used, on each page of the test report, each item of test equipment and ancillaries such as cables are identified (numbered) by the Test Laboratory, below.

### *Anechoic chamber C:*

No	Equipment/Type	Manuf.	Serial Nr.	Inv. No. Cetecom	Last Calibration	Frequency (months)	Next Calibration
1	Anechoic chamber	MWB	87400/02	300000996	Monthly verification		
2	System-Rack 85900	HP I.V.	*	300000222	n.a.		
3	Measurement System 1						
4	Spektrum Analyzer 8566B	HP	2747A05306	300001000	05.10.2006	24	05.10.2008
5	Spektrum Analyzer Display 85662A	HP	2816A16541	300002297	05.10.2006	24	05.10.2008
6	Quasi-Peak-Adapter 85650A	HP	2811A01131	300000999	05.10.2006	24	05.10.2008
7	RF-Preselector 85685A	HP	2837A00779	300000218	08.11.2006	24	08.11.2008
8	PC Vectra VL	HP		300001688	n.a.		
9	Software EMI	HP		300000983	n.a.		
10	Measurement System 2						
11	FSP 30	R&S	100623	ICT 300003464	05.10.2007	24	15.10.2009
12	PC	F+W			n.a.		
13	TILE	TILE			n.a.		
14	Biconical antenna	EMCO	S/N: 860 942/003		Monthly verification (System cal.)		
15	Log. Period. Antenna 3146	EMCO	2130	300001603	Monthly verification (System cal.)		
16	Double Ridged Antenna HP 3115P	EMCO	3088	300001032	Monthly verification (System cal.)		
17	Active Loop Antenna 6502	EMCO	2210	300001015	Monthly verification (System cal.)		
18	Power Supply 6032A	HP	2818A03450	300001040	12.05.2007	36	12.05.2010
19	Busisolator	Kontron		300001056	n.a.		
20	Leitungsteiler 11850C	HP		300000997	Monthly verification (System cal.)		
21	Power attenuator 8325	Byrd	1530	300001595	Monthly verification (System cal.)		
22	Band reject filter WRCG1855/1910	Wainwright	7	300003350	Monthly verification (System cal.)		
23	Band reject filter WRCG2400/2483	Wainwright	11	300003351	Monthly verification (System cal.)		

### *System Rack Room 005 :*

No	Equipment/Type	Manuf.	Serial Nr.	Inv. No. Cetecom	Last Calibration	Frequency (months)	Next Calibration
1	FSP 30	R&S		300003575	02.04.2007	24	02.04.2009
2	CBT	R&S	100313	300003516	24.10.2006	24	24.10.2008
3	Switch Matrix	HP		300000929	n.a.		
4	Power Supply	HP	3041A00544	300002270	13.05.2007	36	13.05.2010
5	Signal Generator	R&S	836206/0092	300002680	30.05.2007	36	30.05.2010

**Climatic Box:**

No	Equipment/Type	Manuf.	Serial Nr.	Inv. No. Cetecom	Last Calibration	Frequency (months)	Next Calibration
1	Climatic box VT 4002	Heraeus Vötsch	58566046820010	300003019	11.05.2007	24	11.05.2009
2	Climatic box CTS T-40/50	CTS	064023	300003540	03.01.2007	24	03.01.2009

**SRD Laboratory Room 002:**

No	Equipment/Type	Manuf.	Serial Nr.	Inv. No. Cetecom	Last Calibration	Frequency (months)	Next Calibration
1	System Controller PSM 12	R&S	835259/007	3000002681-00xx	n.a.		
2	Memory Extension PSM-K10	R&S	To 1	3000002681	n.a.		
3	Operating Software PSM-B2	R&S	To 1	3000002681	n.a.		
4	19" Monitor		22759020-ED	3000002681	n.a.		
5	Mouse		LZE 0095/6639	3000002681	n.a.		
6	Keyboard		G00013834L461	3000002681	n.a.		
7	Spectrum Analyser FSIQ 26	R&S	835540/018	3000002681-0005	01.08.2006	24	01.08.2008
8	Tracking Generator FSIQ-B10	R&S	835107/015	3000002681	s.No.7		
10	RF-Generator SMIQ03 (B1 Signal)	R&S	835541/056	3000002681-0002	01.08.2006	36	01.08.2009
11	Modulation Coder SMIQ-B20	R&S	To 10	3000002681	s.No.10		
12	Data Generator SMIQ-B11	R&S	To 10	3000002681	s.No.10		
13	RF Rear Connection SMIQ-B19	R&S	To 10	3000002681	s.No.10		
14	Fast CPU SM-B50	R&S	To 10	3000002681	s.No.10		
15	FM Modulator SM-B5	R&S	835676/033	3000002681	s.No.10		
16	RF-Generator SMIQ03 (B2 Signal)	R&S	835541/055	3000002681-0001	01.08.2006	36	01.08.2009
17	Modulation Coder SMIQ-B20	R&S	To 16	3000002681	s.No.16		
18	Data Generator SMIQ-B11	R&S	To 16	3000002681	s.No.16		
19	RF Rear Connection SMIQ-B19	R&S	To 16	3000002681	s.No.16		
20	Fast CPU SM-B50	R&S	To 16	3000002681	s.No.16		
21	FM Modulator SM-B5	R&S	836061/022	3000002681	s.No.16		
22	RF-Generator SMP03 (B3 Signal)	R&S	835133/011	3000002681-0003	01.08.2006	36	01.08.2009
23	Attenuator SMP-B15	R&S	835136/014	3000002681	S.No.22		
24	RF Rear Connection SMP-B19	R&S	834745/007	3000002681	S.No.22		
25	Power Meter NRVD	R&S	835430/044	3000002681-0004	01.08.2006	24	01.08.2008
26	Power Sensor NRVD-Z1	R&S	833894/012	3000002681-0013	01.08.2006	24	01.08.2008
27	Power Sensor NRVD-Z1	R&S	833894/011	3000002681-0010	01.08.2006	24	01.08.2008
28	Rubidium Standard RUB	R&S		3000002681-0009	01.08.2006	24	01.08.2008
29	Switching and Signal Conditioning Unit SSCU	R&S	338864/003	3000002681-0006	01.08.2006	24	01.08.2008
30	Laser Printer HP Deskjet 2100	HP	N/A	3000002681-0011	n.a.		
31	19" Rack	R&S	11138363000004	3000002681	n.a.		
32	RF-cable set	R&S	N/A	3000002681	n.a.		
33	IEEE-cables	R&S	N/A	3000002681	n.a.		
34	Sampling System FSIQ-B70	R&S	835355/009	3000002681	s.No.7		
35	RSP programmable attenuator	R&S	834500/010	3000002681-0007	01.08.2006	24	01.08.2008
36	Signalling Unit	R&S	838312/011	3000002681	n.a.		

37	NGPE programmable Power Supply for EUT	R&S	192.033.41	3000002681			
39	Power Splitter 6005-3	Inmet Corp.	none	300002841	23.12.2006	24	23.12.2008
40	SMA Cables SPS-1151-985-SPS	Insulated Wire	different	different	n.a.		
41	CBT32 with EDR Signalling Unit	R&S					
42	Coupling unit	Narda	N/A	--	n.a.		
43	2xSwitch Matrix PSU	R&S	872584/021	300001329	n.a.		
44	RF-cable set	R&S	N/A	different	n.a.		
45	IEEE-cables	R&S	N/A	--	n.a.		

Note: 3000002681-00xx inventoried as a system

### SRD Laboratory Room 005:

No	Equipment/Type	Manuf.	Serial Nr.	Inv. No. Cetecom	Last Calibration	Frequency (months)	Next Calibration
1	Spektrum Analyzer 8566B	HP	2747A05275	300000219	08.11.2006	24	08.11.2008
2	Spektrum Analyzer Display 85662A	HP	2816A16497	300001690	08.11.2006	24	08.11.2008
3	Quasi-Peak-Adapter 85650A	HP	2811A01135	300000216	08.11.2006	24	08.11.2008
4	Power Supply	Heiden	003202	300001187	12.05.2007	36	12.05.2010
5	Power Supply	Heiden	1701	300001392	12.05.2007	36	12.05.2010

### Anechoic chamber F:

No	Equipment/Type	Manuf.	Serial Nr.	Inv. No. Cetecom	Last Calibration	Frequency (months)	Next Calibration
1	Control Computer	F+W	FW0502032	300003303	-/-	-/-	-/-
2	Trilog Antenna	9163-295	-/-	-/-	30.04.2008	24	30.04.2010
3	Amplifier - 0518C-138	Veritech Microwave Inc.	-/-	-/-	-/-	-/-	-/-
4	Switch - 3488A	HP		300000368	-/-	-/-	-/-
5	EMI Test receiver - ESCI	R&S	100083	300003312	31.01.2009	24	31.01.2009
6	Turntable Controller - 1061 3M	EMCO	1218	300000661	-/-	-/-	-/-
7	Tower Controller 1051 Controller	EMCO	1262	300000625	-/-	-/-	-/-
8	Tower - 1051	EMCO	1262	300000625	-/-	-/-	-/-
10	Ultra Notch-Filter Rejected band Ch. 62	WRCD	9	-/-	-/-	-/-	-/-

## 5 Photographs of Test Setup

### Test setup

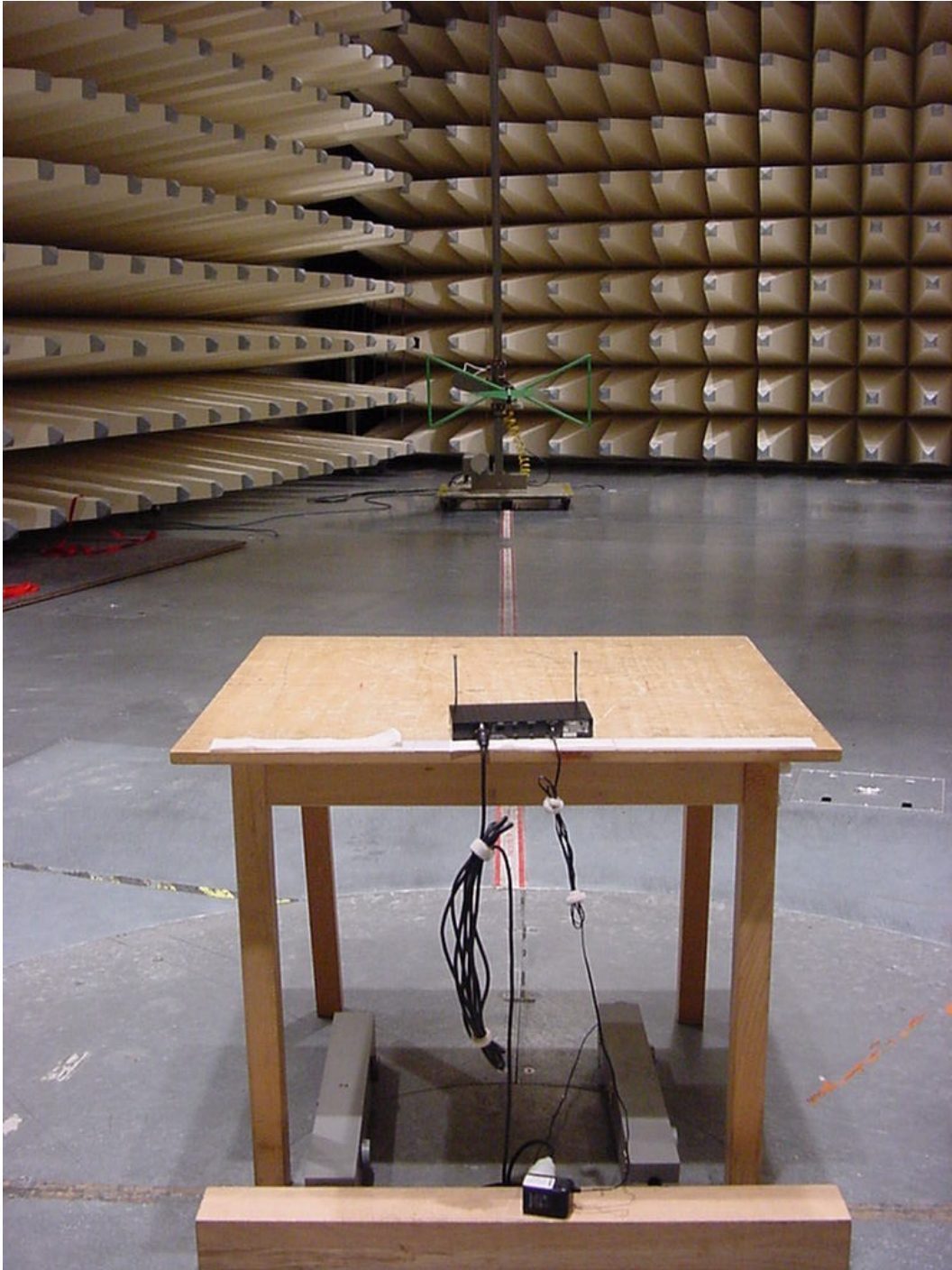
#### Radiated Emissions

#### SKM3-C





**Test site**  
**Radiated Emissions**  
**EM1**



**Test site**  
**Conducted emissions**





## 6 Photographs of Test Equipment

### SKM 3-A

Photo 1:



Photo 2:





Photo 3:



Photo 4:

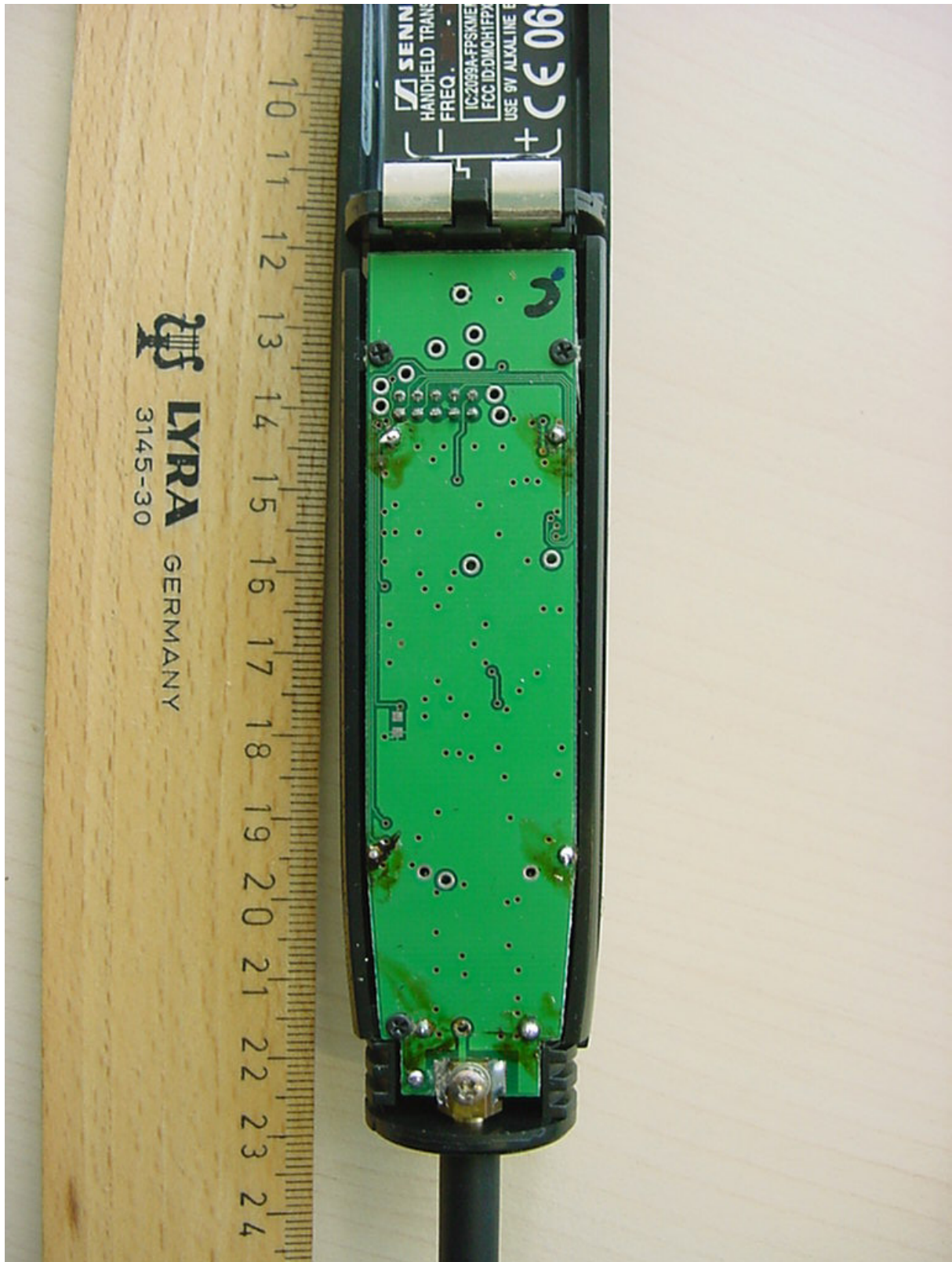
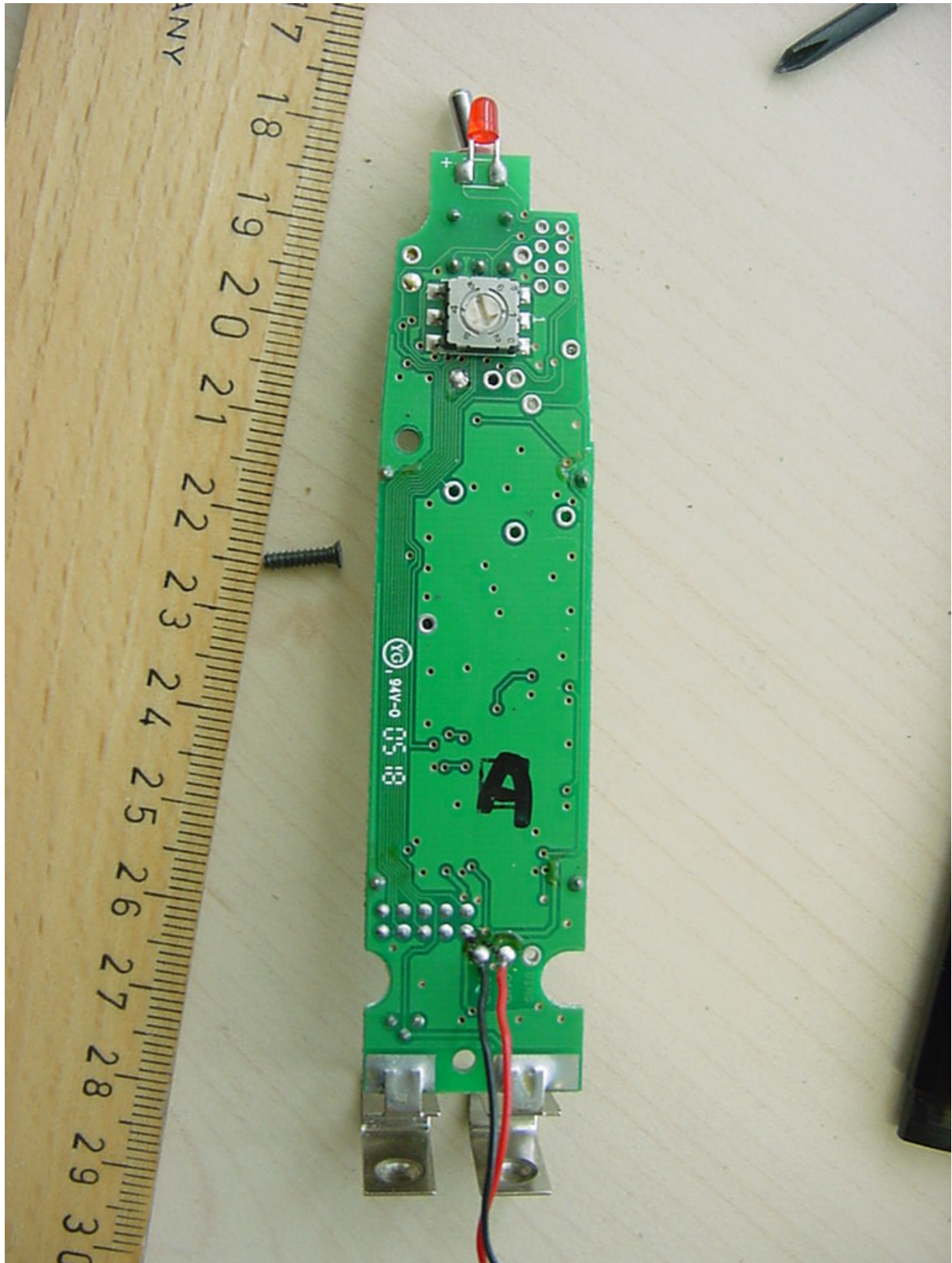




Photo 5:



Photo 6:





EM 1-B

Photo 7:



Photo 8:





Photo 9:

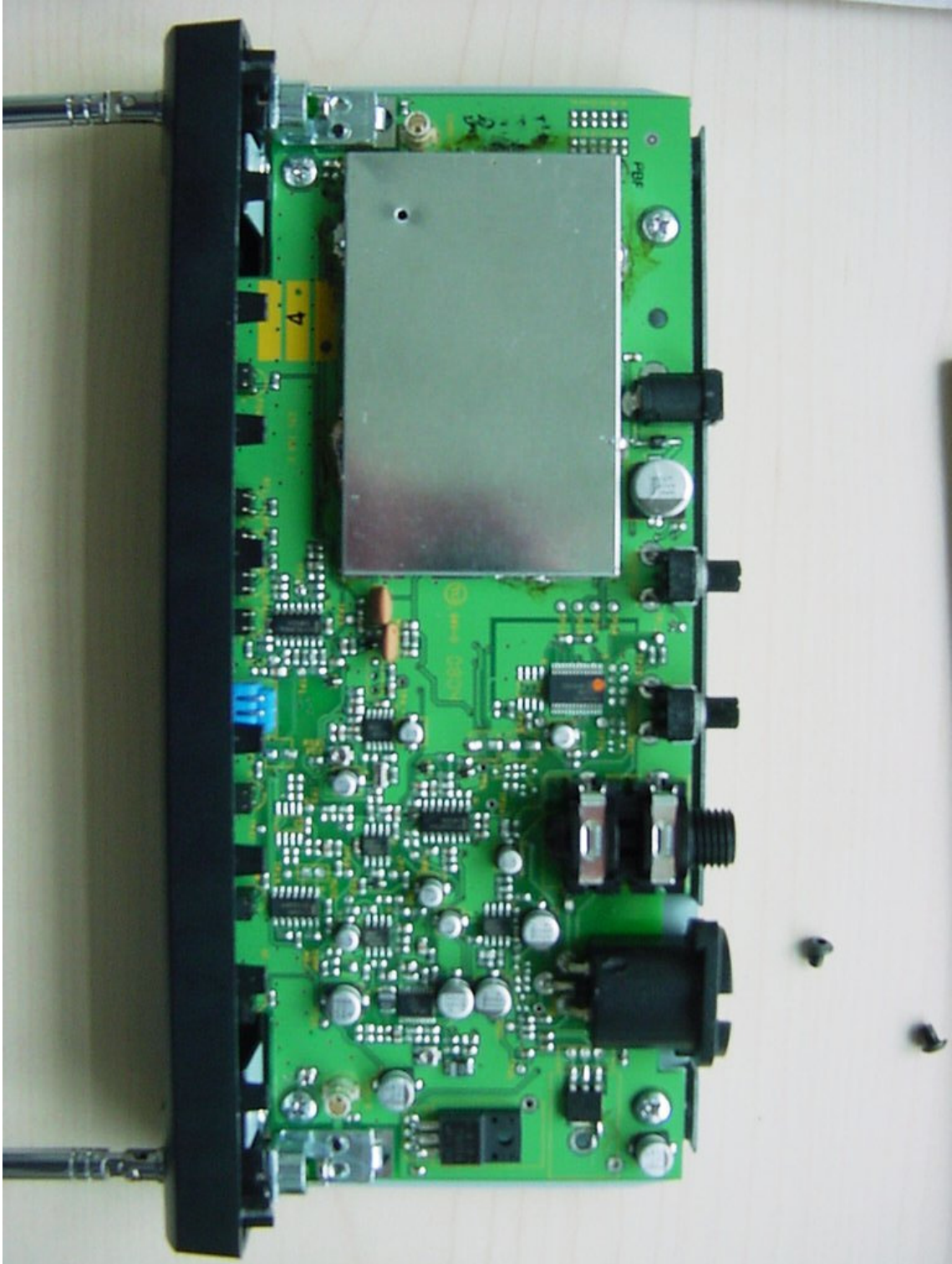


Photo 10:

