

# CETECOM ICT Services GmbH

Radio Satellite Communication

Untertürkheimer Straße 6-10 . D-66117 Saarbrücken

Telephone: +49 (0)681 598-0

Telefax: -9075

RSC11

issued test report consists of 45 Pages

Page 1 (45)

Recognized by the  
Federal Communications Commission  
**FCC–Identification Number: 90462**  
**TCB ID: DE 0001**



**Anechoic chamber registration no.: 3463 (IC)**

Accredited by the  
German Accreditation Council  
**DAR–Registration Number**  
**TTI–P–G 081/94–D0**



Independent ETSI  
compliance test house



**Accredited Bluetooth™ Test Facility (BQTF)**

**Test Report No.: 2\_4133-01-01-B/05**  
**FCC Part 74.861 / CANADA RSS-123**  
**SKM3-A / EM1**  
**FCC ID : DMOH1FPXD**  
**IC : 2099A-FPSKMEM**

CETECOM – ICT Services GmbH  
Untertürkheimerstr. 6-10  
66117 Saarbrücken, Germany

Telephone: + 49 (0) 681 / 598-0  
Fax: + 49 (0) 681 / 589-9075

## **Table of Contents**

### **1 General Information**

#### **1.1 Notes**

#### **1.2 Testing Laboratory**

#### **1.3 Details of Applicant**

#### **1.4 Application Details**

#### **1.5 Test Item**

#### **1.6 Test Specifications**

### **2 Technical Test**

#### **2.1 Summary of Test Results**

#### **2.2 Test Report**

## 1 General Information

### 1.1 Notes

The test results of this test report relate exclusively to the test item specified in 1.5. The CETECOM ICT Services GmbH does not assume responsibility for any conclusions and generalizations drawn from the test results with regard to other specimens or samples of the type of the equipment represented by the test item. The test report may only be reproduced or published in full. Reproduction or publication of extracts from the report requires the prior written approval of the CETECOM ICT Services GmbH.

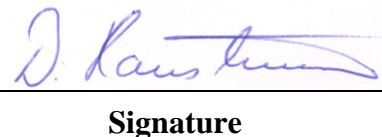
### Test Laboratory Manager:

2005-10-24	RSC8411	Berg M.
Date	Section	Name

  
Signature

### Technical Responsibility for Area of Testing:

2005-10-24	RSC8412	Hausknecht D.
Date	Section	Name

  
Signature

## 1.2 Testing Laboratory

CETECOM ICT Services GmbH  
Untertürkheimer Straße 6 - 10  
66117 Saarbrücken  
Germany

Telephone : + 49 681 598 - 0  
Telefax : + 49 681 598 - 9075  
E-mail : info@ict.cetecom.de  
Internet : www.cetecom-ict.de

### Accredited testing laboratory

The Test laboratory (area of testing) is accredited according to DIN EN ISO/IEC 17025.

DAR-registration number : TTI-P-G 166/98-30

Accredited Bluetooth™ Test Facility (BQTF)

BLUETOOTH is a trademark owned by Bluetooth SIG, Inc. and licensed to CETECOM

## 1.3 Details of Applicant

Name : Sennheiser electronic GmbH & Co. KG  
Street : Am Labor 1  
City : D-30900 Wedemark  
Country : Germany  
Telephone : +49 (0) 5130 600-0  
Telefax : +49 (0) 5130 600-330  
Contact : Mr.Volker Bartsch  
Telephone : +49 (0) 5130 600-465  
E-mail : bartschv@sennheiser.com

## 1.4 Application Details

Date of receipt of application : 2005-10-14  
Date of receipt of test item : 2005-10-19  
Date of test : 2005-10-21

## 1.5 TEST ITEM

Type of equipment : Low power auxiliary equipment  
Type designation : SKM3-A and EM1 ( freePORT)  
Manufacturer : Dynatron Industrial Co. Ltd  
Street : No. 89, Din Pin Rd., Ray Fong Industrial Area,  
City : Ray Fong Town, Taipei Hsien  
Country : Taiwan  
Serial number : Rx : -.-  
Additional information :  
Frequency : 719 to 21 MHz  
Emission designator : 122KF3E (2x max. Audio Frequency + 2x max. FM Deviation)  
Number of channels : 4  
Antenna : Tx:  $\lambda/4$  helical antenna  
RX:  $\lambda/4$  rod antenna  
Power supply : Tx: 9V DC Battery  
RX: 110 V AC  
Output power : 2.6 mW ERP  
Occupied bandwidth : 139.279 kHz  
Transmitter spurious : -38.0dBm (1441.7 MHz)  
Receiver spurious : 50.2dB $\mu$ V/m in 3m  
Temperature range : -30°C - +50°C  
FCC ID : DMOH1FPXD  
IC : 2099A-FPSKMEM

**DECLARATION OF COMPLIANCE:** I declare that the testing was performed or supervised by me; that the test measurements were made in accordance with the above-mentioned Industry Canada standard(s); and that the equipment identified in this application has been subjected to all the applicable test conditions specified in the Industry Canada standards and all of the requirements of the standard have been met.

Signature:  \_\_\_\_\_

Date: 2005-10-21 Michael Berg ; Test management  
NAME AND TITLE (Please print or type):

## 1.6 Test Specifications:

**FCC Part 74 Subpart H  
CANADA RSS-123**

## 2 Technical Test

### 2.1 Summary of Test Results

#### **TEST PROCEDURE**

**All tests were done in accordance with the EIA/TIA 603.**

**THE SUBSTITUTION METHOD ( TIA/EIA 603) WAS USED.**

**This products fulfills also the requirements for CANADA RSS-123**

**No deviations from the technical specification(s) were ascertained in the course of the tests performed.**

**Final verdict : PASS**

**2.2 Test report**

**TEST REPORT**

**Test report no.: 2\_4133-01-01-B/05**

## TEST REPORT REFERENCE

## LIST OF MEASUREMENTS

PARAMETER TO BE MEASURED	PAGE
OUTPUT POWER (radiated) FCC Rule Part 74.861 (e)(1)(ii)	9
AFC FREQ ERROR vs. VOLTAGE FCC Rule Part 74.861	12
AFC FREQ ERROR vs. TEMPERATURE	13
CHARACTERISTICS OF THE AUDIO MODULATION CIRCUITRY	14
OCCUPIED BANDWIDTH FCC Rule Part 74.861(e)(3), (5)/ Sec. 2.1049	15
Emission mask FCC 74 861(e)(6)	17
RADIATED EMISSIONS FCC Rule Part 74 subpart H	18
FCC Part 15 Subpart B	22
SPURIOUS RADIATION § 15.109	23
Conducted emissions § 15.107/207	25
TEST EQUIPMENT AND ANCILLARIES USED FOR TESTS	26
Test setup	28
Photographs of the equipment	33



**Equipment under test : SKM3**  
**Ambient temperature : 23°C**  
**Relative humidity : 44%**

**OUTPUT POWER (radiated)**

**FCC Rule Part 74.861 (e)(1)(ii)**

## Method of measurement:

### Measuring the EIRP of Spurious/Harmonic Emissions using Substitution Method

- (a) The measurements was performed with full rf output power and modulation.
- (b) Test was performed at listed 3m test site (listed with FCC, IC).
- (c) The transmitter under test was placed at the specified height on a non-conducting turntable (80 cm height)
- (d) The BICONILOG antenna (20 MHz to 1 GHz) or HORN antenna (1 GHz to 18 GHz) was used for measuring.
- (e) Load an appropriate correction factors file in EMI Receiver for correcting the field strength reading level  
Total Correction Factor recorded in the EMI Receiver = Cable Loss + Antenna Factor  
 $E \text{ (dBuV/m)} = \text{Reading (dBuV)} + \text{Total Correction Factor (dB/m)}$
- (f) Set the EMI Receiver and #2 as follows:
  - Center Frequency: test frequency
  - Resolution BW: 100 kHz
  - Video BW: same
  - Detector Mode: positive
  - Average: off
  - Span: 3 x the signal bandwidth
- (g) The test antenna was lowered or raised from 1 to 4 meters until the maximum signal level was detected.
- (h) The transmitter was rotated through 360 o about a vertical axis until a higher maximum signal was received.
- (i) The test antenna was lowered or raised again from 1 to 4 meters until a maximum was obtained. This level was recorded.
- (j) The recorded reading was corrected to the true field strength level by adding the antenna factor, cable loss and subtracting the pre-amplifier gain.
- (k) The above steps were repeated with both transmitters' antenna and test receiving antenna placed in vertical and horizontal polarization. Both readings with the antennas placed in vertical and horizontal polarization shall be recorded.
- (l) Repeat for all different test signal frequencies

### Measuring the EIRP of Spurious/Harmonic Emissions using Substitution Method

- (a) Set the EMI Receiver (for measuring E-Field) and Receiver #2 (for measuring EIRP) as follows:
  - Center Frequency : equal to the signal source
  - Resolution BW : 10 kHz
  - Video BW : same
  - Detector Mode : positive
  - Average : off
  - Span : 3 x the signal bandwidth
- (b) Load an appropriate correction factors file in EMI Receiver for correcting the field strength reading level  
Total Correction Factor recorded in the EMI Receiver = Cable Loss + Antenna Factor  
 $E \text{ (dBuV/m)} = \text{Reading (dBuV)} + \text{Total Correction Factor (dB/m)}$
- (c) Select the frequency and E-field levels for ERP/EIRP measurements.
- (d) Substitute the EUT by a signal generator and one of the following transmitting antenna (substitution antenna):  
.DIPOLE antenna for frequency from 30-1000 MHz or .HORN antenna for frequency above 1 GHz }.

**REFERENCE NUMBER(S) OF TEST EQUIPMENT USED**  
**(for reference numbers see test equipment listing)**

**17-24**

**Equipment under test : SKM3**

**Ambient temperature : 23°C**

**Relative humidity : 44%**

- (e) Mount the transmitting antenna at 1.5 meter high from the ground plane.
- (f) Use one of the following antenna as a receiving antenna: .DIPOLE antenna for frequency from 30-1000 MHz or .HORN antenna for frequency above 1 GHz }.
- (g) If the DIPOLE antenna is used, tune it's elements to the frequency as specified in the calibration manual.
- (h) Adjust both transmitting and receiving antenna in a VERTICAL polarization.
- (i) Tune the EMI Receivers to the test frequency.
- (j) Lower or raise the test antenna from 1 to 4 meters until the maximum signal level was detected.
- (k) The transmitter was rotated through 360 o about a vertical axis until a higher maximum signal was received.
- (l) Lower or raise the test antenna from 1 to 4 meters until the maximum signal level was detected.
- (m) Adjust input signal to the substitution antenna until an equal or a known related level to that detected from the transmitter was obtained in the test receiver.
- (n) Record the power level read from the Average Power Meter and calculate the ERP/EIRP as follows:  
 **$P = P1 - L1 = (P2 + L2) - L1 = P3 + A + L2 - L1$**   
 **$EIRP = P + G1 = P3 + L2 - L1 + A + G1$**   
 **$ERP = EIRP - 2.15 \text{ dB}$**   
Total Correction factor in EMI Receiver # 2 =  $L2 - L1 + G1$   
Where: P: Actual RF Power fed into the substitution antenna port after corrected.  
P1: Power output from the signal generator  
P2: Power measured at attenuator A input  
P3: Power reading on the Average Power Meter  
EIRP: EIRP after correction  
ERP: ERP after correction
- (o) Adjust both transmitting and receiving antenna in a HORIZONTAL polarization, then repeat step (k) to (o)
- (p) Repeat step (d) to (o) for different test frequency
- (q) Repeat steps (c) to (j) with the substitution antenna oriented in horizontal polarization.
- (r) Actual gain of the EUT's antenna is the difference of the measured EIRP and measured RF power at the RF port. Correct the antenna gain if necessary.:

**REFERENCE NUMBER(S) OF TEST EQUIPMENT USED**  
**(for reference numbers see test equipment listing)**

**17-24**

**Equipment under test : SKM3**  
**Ambient temperature : 23°C**  
**Relative humidity : 44%**

### Results:

TEST CONDITIONS		TRANSMITTER ERP (mW)					
		720.850					
Frequency (MHz)							
T <sub>nom</sub> ( 23 )°C	9.0 V	2.6					
antenna gain		0 dB					
Maximum deviation from output power under extreme test conditions (dBc)		±0.4 dB					
Measurement uncertainty		±0.5dB					

### Sample calculation:

Freq	SA Reading	SG Setting	Ant. gain	Dipol gain	Cable loss	ERP Result	ERP Result		
MHz	dB $\mu$ V	dBm	dB $i$	dB $d$	dB	dBm	mW		
720.850	85.1	6.9	-	0.0	2.8	4.1	2.6		

$$\text{ERP} = \text{SG (dBm)} - \text{Cable Loss (dB)} + \text{Ant. gain (dBd)}$$

### LIMIT

### FCC Rule Part 74.861

Frequency range MHz	Power level conducted mW
54-72, 76-88, 174-216	50
470-608, 614-806	250

### REFERENCE NUMBER(S) OF TEST EQUIPMENT USED

(for reference numbers see test equipment listing)

17-24

**Equipment under test : SKM3**  
**Ambient temperature : 23°C**  
**Relative humidity : 44%**

## AFC FREQ ERROR vs. VOLTAGE

FCC Rule Part 74.861

### Method of measurement:

The EUT was fixed in test fixture to a resistive coaxial attenuator of normal load impedance, and the un-modulated carrier was measured by means of a spectrum analyzer .

The input voltage was varied in an range from 6.5V to 9.0V and the maximum change in frequency was noted within one minute.

The temperature tests were performed for each frequency range on one channel

### 720.85 MHz

Voltage (V)	Frequency Error (Hz)	Frequency Error (%)	Frequency Error (ppm)
6.5	170	0,00002358	0,2358
7.0	170	0,00002358	0,2358
7.5	170	0,00002358	0,2358
8.0	205	0,00002844	0,2844
8.5	229	0,00003177	0,3177
9.0	244	0,00003385	0,3385

### LIMIT

FCC Rule Part 74.861(4)

The frequency tolerance of the transmitter shall be 0.005 percent

### REFERENCE NUMBER(S) OF TEST EQUIPMENT USED

(for reference numbers see test equipment listing)

17-24

**Equipment under test : SKM3**  
**Ambient temperature : 23°C**  
**Relative humidity : 44%**

**AFC FREQ ERROR vs. TEMPERATURE****Method of measurement:**

The EUT was connected to a resistive coaxial attenuator of normal load impedance, and the un-modulated carrier was measured by means of a spectrum analyzer .

With all power removed, the temperature was decreased to -30°C and permitted to stabilize for three hours . Power was applied and the maximum change in frequency was noted within one minute.

With power OFF , the temperature was raised in 10°C steps. The sample was permitted to stabilize at each step for at least one-half hour. Power was applied and the maximum frequency error was noted within one minute .

The temperature tests were performed for each frequency range on one channel

**720.850 MHz**

<b>TEMPERATURE (°C)</b>	<b>Frequency Error (Hz)</b>	<b>Frequency Error (%)</b>	<b>Frequency Error (ppm)</b>
<b>-30</b>	<b>-3096</b>	<b>0,00042949</b>	<b>4,2949</b>
<b>-20</b>	<b>-1170</b>	<b>0,00016231</b>	<b>1,6231</b>
<b>-10</b>	<b>712</b>	<b>0,00009877</b>	<b>0,9877</b>
<b>±0,0</b>	<b>908</b>	<b>0,00012596</b>	<b>1,2596</b>
<b>+10</b>	<b>375</b>	<b>0,00005202</b>	<b>0,5202</b>
<b>+20</b>	<b>244</b>	<b>0,00003385</b>	<b>0,3385</b>
<b>+30</b>	<b>-29</b>	<b>0,00000402</b>	<b>0,0402</b>
<b>+40</b>	<b>-655</b>	<b>0,00009086</b>	<b>0,9086</b>
<b>+50</b>	<b>-1377</b>	<b>0,00019102</b>	<b>1,9102</b>

**LIMIT****FCC Rule Part 74.861**

<b>The frequency tolerance of the transmitter shall be 0.005 percent</b>
--

**REFERENCE NUMBER(S) OF TEST EQUIPMENT USED**  
**(for reference numbers see test equipment listing)**

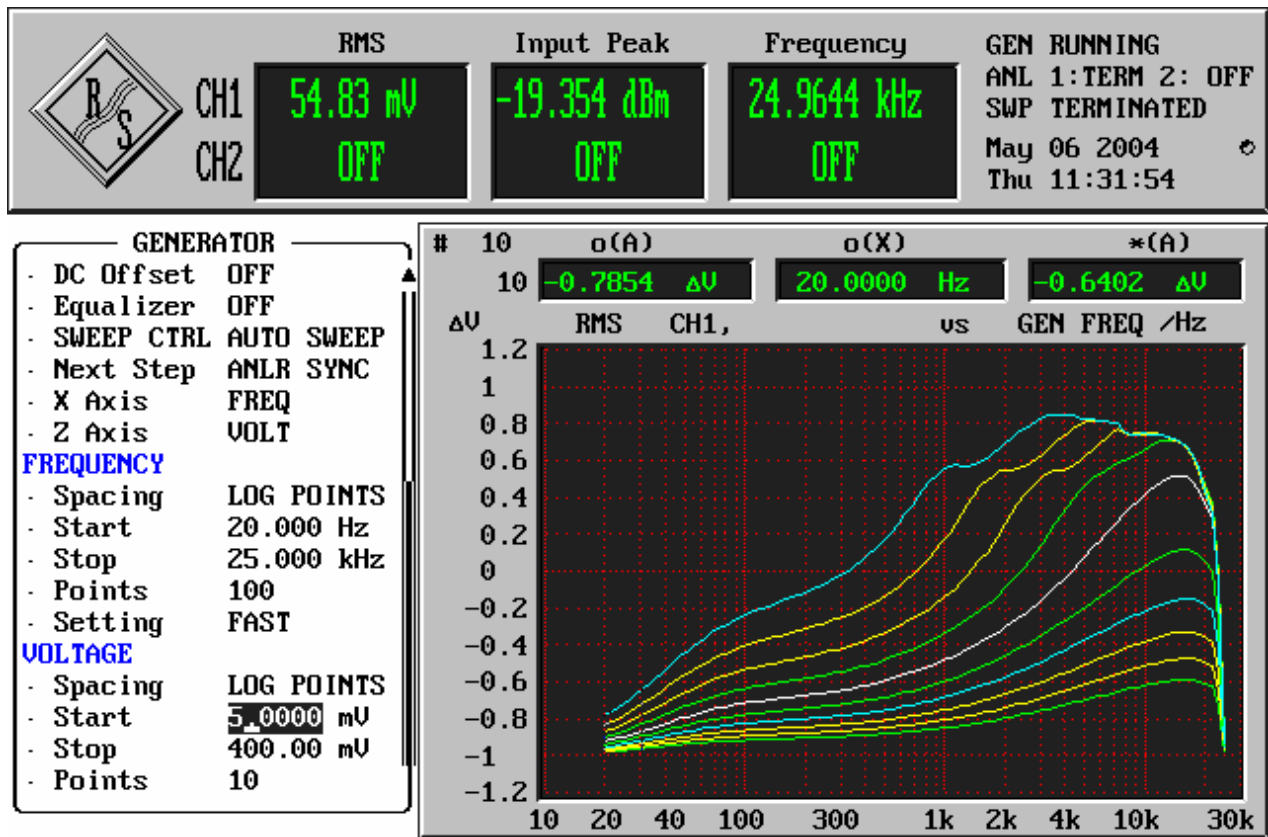
**17-24**

Equipment under test : SKM3  
 Ambient temperature : 23°C  
 Relative humidity : 44%

**CHARACTERISTICS OF THE AUDIO MODULATION CIRCUITRY**  
**FCC Rule Part 74 .861(e3)**

Method of measurement :

The audio frequency responds was measured in accordance with EIA/TIA 603.  
 The plots shows 10 curves with different modulation levels, starting from 5 mV to 400 mV (30%+20 dB Modulation), the frequency is varied from 20 Hz to 25 kHz .



max. measured frequency deviation : ± 46 kHz

this measurement is valid for all channels

Limit: max Deviation ±75kHz

REFERENCE NUMBER(S) OF TEST EQUIPMENT USED  
 (for reference numbers see test equipment listing)  
 17-24

Equipment under test : SKM3  
 Ambient temperature : 23°C  
 Relative humidity : 44%

**OCCUPIED BANDWIDTH**

**FCC Rule Part 74.861(e)(3), (5)/ Sec. 2.1049**

**Test method :**

**The audio frequency responds was measured in accordance with EIA/TIA 603.**

Data in the plots show that all sidebands between 50 & 100% for the authorized bandwidth are attenuated by at least 25dB. From 100 to 250% of the authorized bandwidth they are attenuated by at least 35dB and beyond 250% 43 log(Po) dB. The plot shows the transmitter modulated with 15000 Hz (the highest modulation frequency), adjusted for 50% modulation plus 16 dB. The spectrum analyzer was set with the un-modulated carrier at the top of the screen. The test procedure diagram and occupied bandwidth plots follow.

TEST CONDITIONS		OCCUPIED BANDWIDTH ( kHz )				
		720.850				
Frequency (MHz)						
T <sub>nom</sub> ( 23 )°C	V <sub>nom</sub> (9.0)V	139.279				
max. Deviation (FM)		46.4 kHz				
Measurement uncertainty		±0.5%				

**Limits**

**FCC Rule Part 74.861(e)(5)**

<b>The operating bandwidth shall not exceed 200 kHz</b>
---

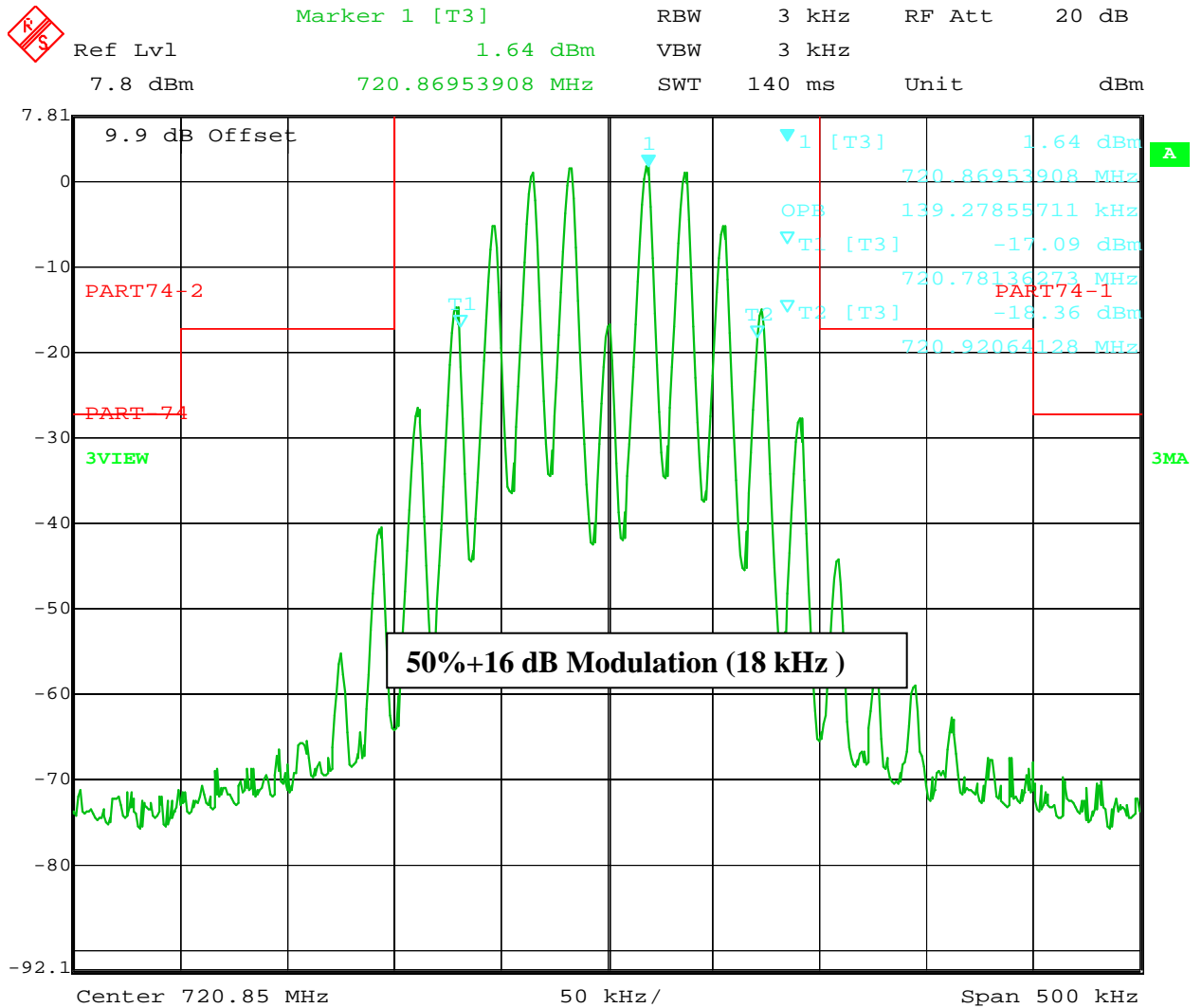
**REFERENCE NUMBER(S) OF TEST EQUIPMENT USED**  
 (for reference numbers see test equipment listing)

Equipment under test : SKM3  
 Ambient temperature : 23°C  
 Relative humidity : 44%

## OCCUPIED BANDWIDTH

FCC Rule Part 74.861(e)(3), (5)/ Sec. 2.989

Frequency: 720.850 MHz / max. deviation : ± 46 kHz (Limit ± 75 kHz)



Date: 21.OCT.2005 11:16:37

REFERENCE NUMBER(S) OF TEST EQUIPMENT USED  
 (for reference numbers see test equipment listing)  
 17-24

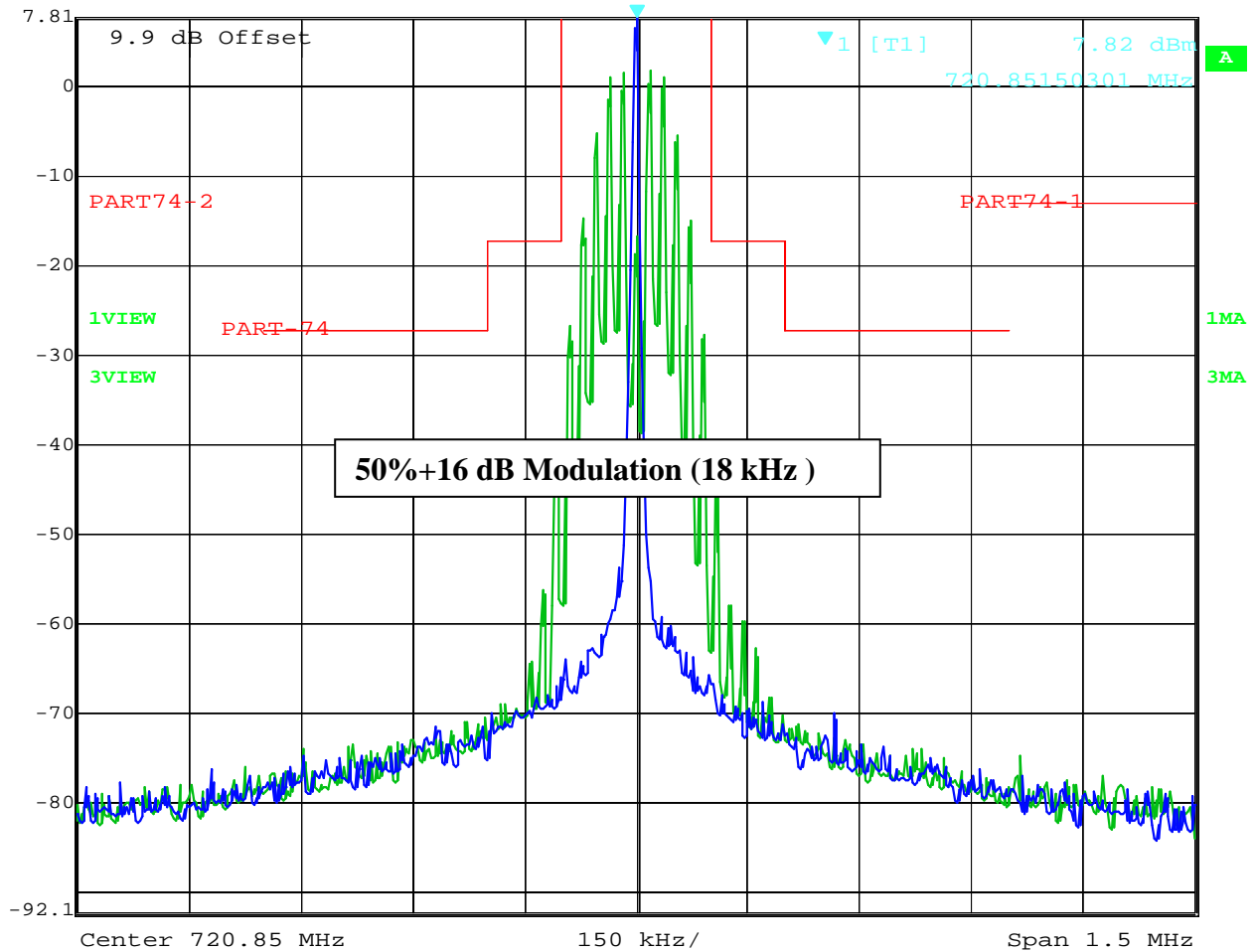


Equipment under test : SKM3  
 Ambient temperature : 23°C  
 Relative humidity : 44%

Emission mask FCC 74 861(e)(6)

## 720.850 MHz

Marker 1 [T1]
RBW 3 kHz
RF Att 20 dB  
Ref Lvl 7.8 dBm
7.82 dBm
VBW 3 kHz  
7.8 dBm
720.85150301 MHz
SWT 420 ms
Unit dBm



Date: 21.OCT.2005 11:15:49

### Limits

### FCC Rule Part 74.861(e)(6)

$f \pm 100 \text{ kHz to } f \pm 200 \text{ kHz}$	$f \pm 200 \text{ kHz to } f \pm 500 \text{ kHz}$	$f \pm 500 \text{ kHz}$
25 dBc	35 dBc	-43 +10 log <sub>10</sub> (mean output power in watts) dB below the mean output power

REFERENCE NUMBER(S) OF TEST EQUIPMENT USED  
 (for reference numbers see test equipment listing)  
 17-24

**Equipment under test : SKM3**  
**Ambient temperature : 23°C**  
**Relative humidity : 44%**

## **RADIATED EMISSIONS**

## **FCC Rule Part 74 subpart H**

### **Test procedure**

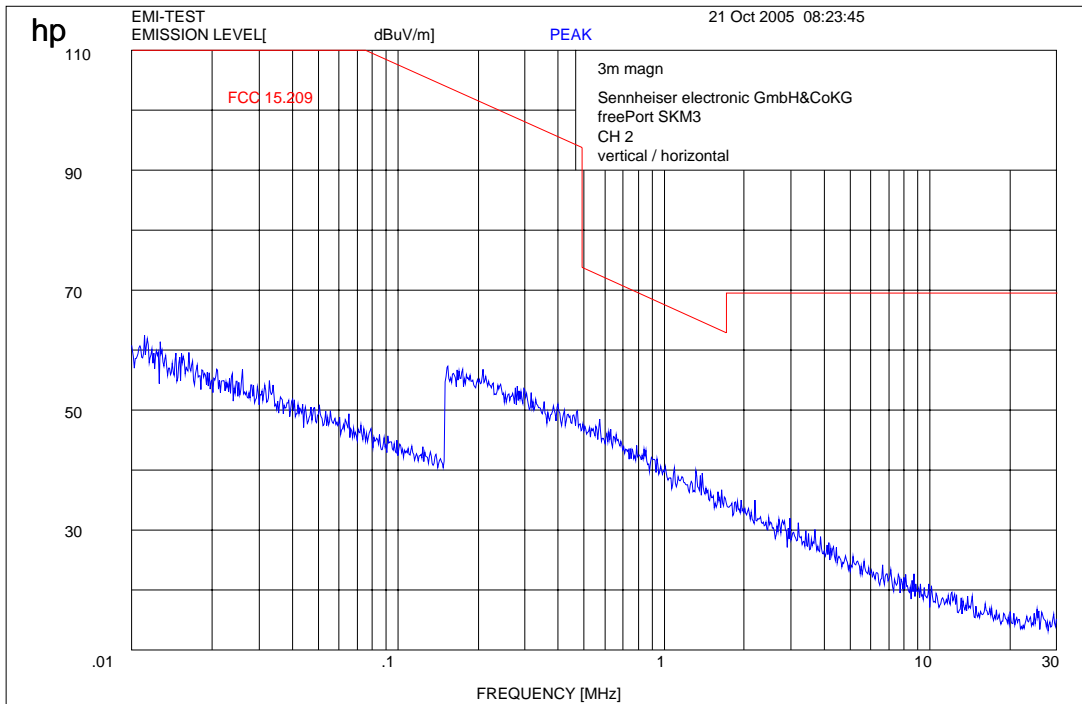
- 1). On a test site, the EUT shall be placed on a turntable, and in the position closest to the normal use as declared by the user.
- 2). The test antenna shall be oriented initially for vertical polarization located 3m from the EUT to correspond to the frequency of the transmitter.
- 3). The output of the test antenna shall be connected to the measuring receiver and either a peak or quasi-peak detector was used for the measurement as indicated on the report. The detector selection is based on how close the emission level was approaching the limit.
- 4). The transmitter shall be switched on, if possible, without the modulation and the measurement receiver shall be tuned to the frequency of the transmitter under test.
- 5). The test antenna shall be raised and lowered through the specified range of height until a maximum signal level is detected by the measuring receiver.
- 6). The transmitter shall then be rotated through 360° in the horizontal plane, until the maximum signal level is detected by the measuring receiver.
- 7). The test antenna shall be raised and lowered again through the specified range of height until a maximum signal level is detected by the measuring receiver.
- 8). The maximum signal level detected by the measuring receiver shall be noted.
- 9). The transmitter shall be replaced by a substitution antenna (tuned dipole for f less than 1GHz and horn for frequency higher than 1GHz).
- 10). The substitution antenna shall be oriented for vertical polarization and the length (if a dipole antenna is used) of the substitution antenna shall be adjusted to correspond to the frequency of the transmitter.
- 11). The substitution antenna shall be connected to a calibrated signal generator.
- 12). If necessary, the input attenuator setting of the measuring receiver shall be adjusted in order to increase the sensitivity of the measuring receiver.
- 13). The test antenna shall be raised and lowered through the specified range of the height to ensure that the maximum signal is received.
- 14). The input signal to the substitution antenna shall be adjusted to the level that produces a level detected by the measuring receiver, that is equal to the level noted while the transmitter radiated power was measured, corrected for the change of input attenuation setting of the measuring receiver.
- 15). The input level to the substitution antenna shall be recorded as power level in dBm, corrected for any change of input attenuator setting of the measuring receiver.
- 16). The measurement shall be repeated with the test antenna and the substitution antenna oriented for horizontal polarization.
- 17). The measure of the effective radiated power is the larger of the two levels recorded, at the input to the substitution antenna, corrected for the gain of the substitution antenna if necessary.
- 18). Repeat above substitution measurement procedure for fundamental and all harmonica emissions.



Equipment under test : SKM3  
Ambient temperature : 23°C  
Relative humidity : 44%

**RADIATED EMISSIONS**  
(this plot is valid for all channels)  
*Part 15.209 Magnetics*

**FCC Rule Part 74 subpart H**

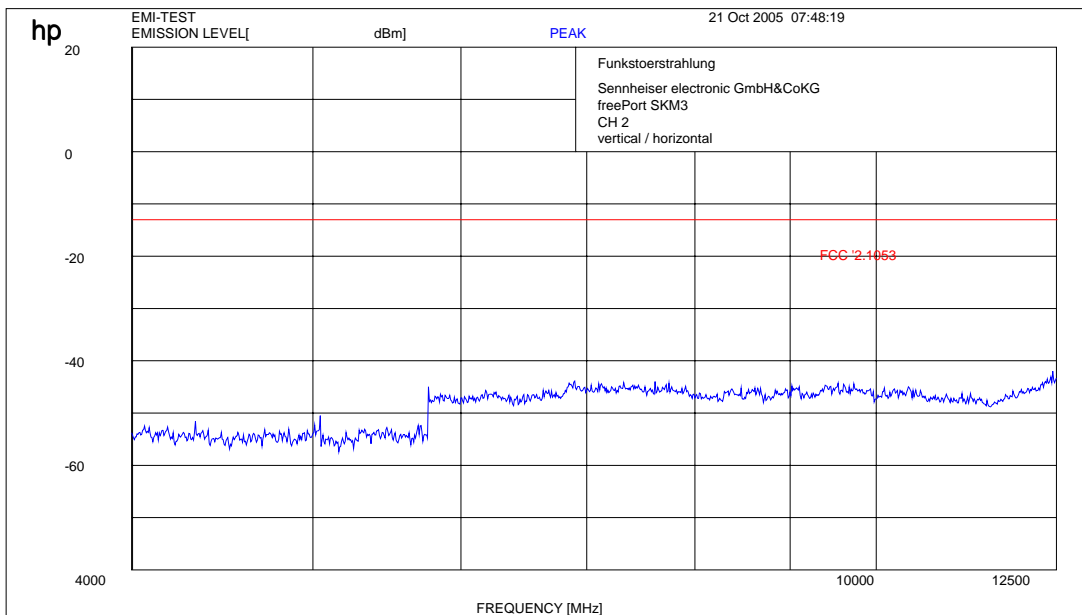
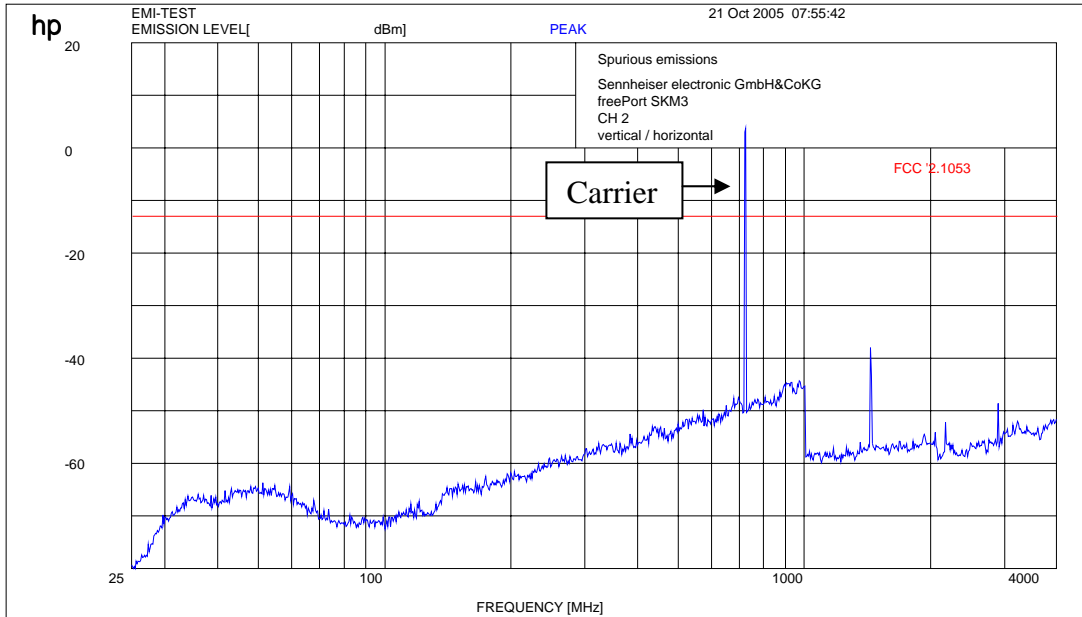


**REFERENCE NUMBER(S) OF TEST EQUIPMENT USED**  
(for reference numbers see test equipment listing)  
17-24

Equipment under test : SKM3  
Ambient temperature : 23°C  
Relative humidity : 44%

## RADIATED EMISSIONS 720.850 MHz

## FCC Rule Part 74 subpart H



**REFERENCE NUMBER(S) OF TEST EQUIPMENT USED**  
(for reference numbers see test equipment listing)  
17-24

Equipment under test : EM1  
Ambient temperature : 23°C  
Relative humidity : 44%

## FCC Part 15 Subpart B

The radiated measurements are performed in vertical and horizontal plane in the frequency range from 9 kHz to 20 GHz in semi-anechoic chambers. The EUT is positioned on a non-conductive support with a height of 0.80 m above a conductive ground plane that covers the whole chamber.

The receiving antennas conform with specifications ANSI C63.2-1996 clause 15 and ANSI C63.4-2001 clause 4.1.5. These antennas can be moved over the height range between 1.0 m and 4.0 m in order to search for maximum field strength emitted from EUT. The measurement distances between EUT and receiving antennas are indicated in the test set-ups for the various frequency ranges. For each measurement, the EUT is rotated in all three axes until the maximum field strength is received.

The wanted and unwanted emissions are received by spectrum analyzers where the detector modes and resolution bandwidths over various frequency ranges are set according to requirement ANSI C63.4-2001 clause 4.2.

Antennas conform with ANSI C63.2-1996 item 15.

150 kHz - 30 MHz: Quasi Peak measurement, 9kHz Bandwidth, passive loop antenna.

30 MHz - 200 MHz: Quasi Peak measurement, 120kHz Bandwidth, biconical antenna

200MHz - 1GHz: Quasi Peak measurement, 120kHz Bandwidth, log periodic antenna

>1GHz: Average, RBW 1MHz, VBW 10 Hz, wave guide horn

All measurement settings are according to FCC 15.35, 15.209.

The product fulfils also the requirements for CANADA RSS-210

No deviations from the technical specification(s) were ascertained in the course of the tests performed.

**FINAL VERDICT : PASS**

Equipment under test : EM1  
 Ambient temperature : 23°C  
 Relative humidity : 44%

**SPURIOUS RADIATION**  
**Radiated**

**§ 15.109**

SPURIOUS EMISSIONS LEVEL (µV/m)								
740.850 MHz								
f (MHz)	Detector	Level (dBµV/m)	f (MHz)	Detector	Level (dBµV/m)	f (MHz)	Detector	Level (dBµV/m)
2325	PK	50.2						
<b>Measurement uncertainty</b>			<b>±3 dB</b>					

f < 1 GHz : RBW/VBW: 100 kHz      f ≥ 1GHz : RBW/VBW: 1 MHz  
 H = Horizontal ; V= Vertical

Measurement distance see table

**Limits**

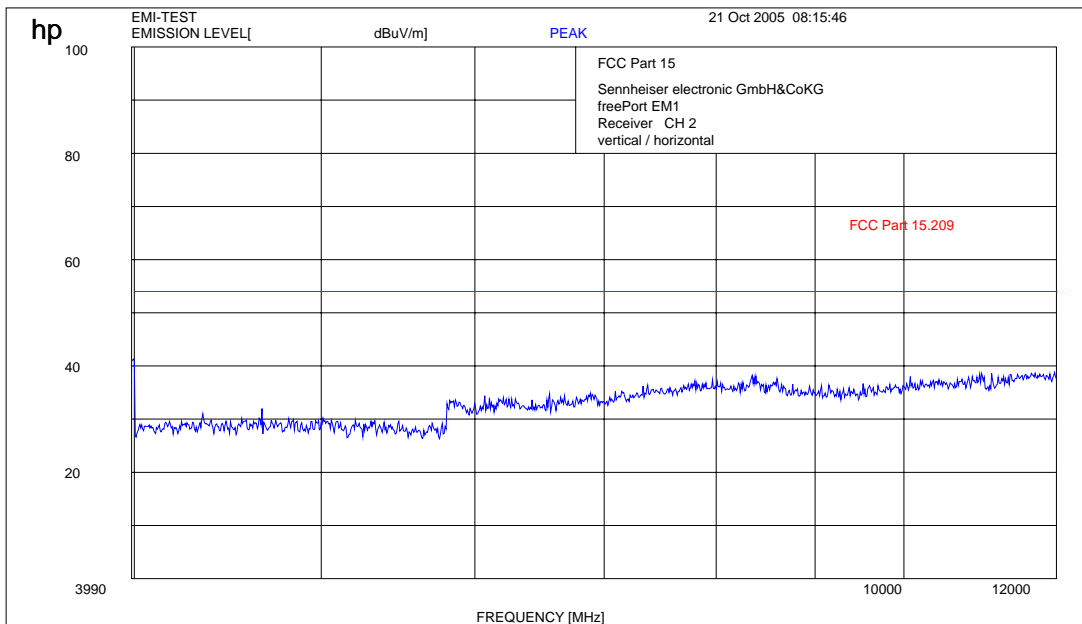
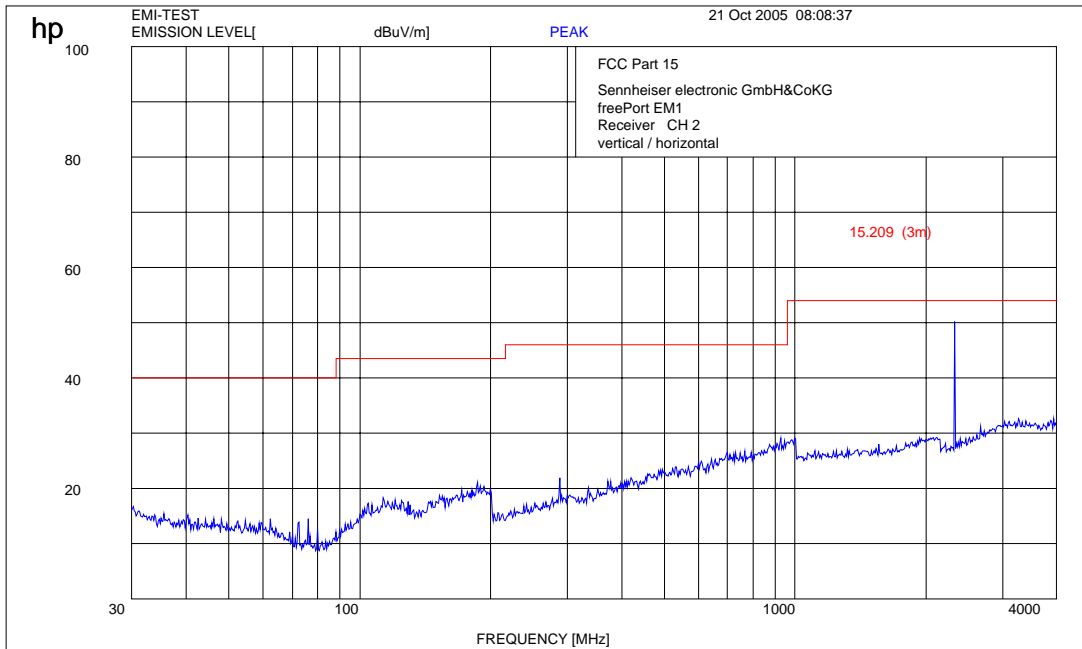
**SUBCLAUSE § 15.109**

Frequency (MHz)	Field strength (µV/m)	Measurement distance (m)
30 - 88	100 / 40 dBµV/m	3
88 - 216	150 / 43.5 dBµV/m	3
216 - 960	200 / 46 dBµV/m	3
above 960	500 / 54 dBµV/m	3

Equipment under test : EM1  
Ambient temperature : 23°C  
Relative humidity : 44%

## RADIATED EMISSIONS

§ 15.109



REFERENCE NUMBER(S) OF TEST EQUIPMENT USED  
(for reference numbers see test equipment listing)  
17-24



**Equipment under test : EM1**  
**Ambient temperature : 23°C**  
**Relative humidity : 44%**

## Conducted emissions

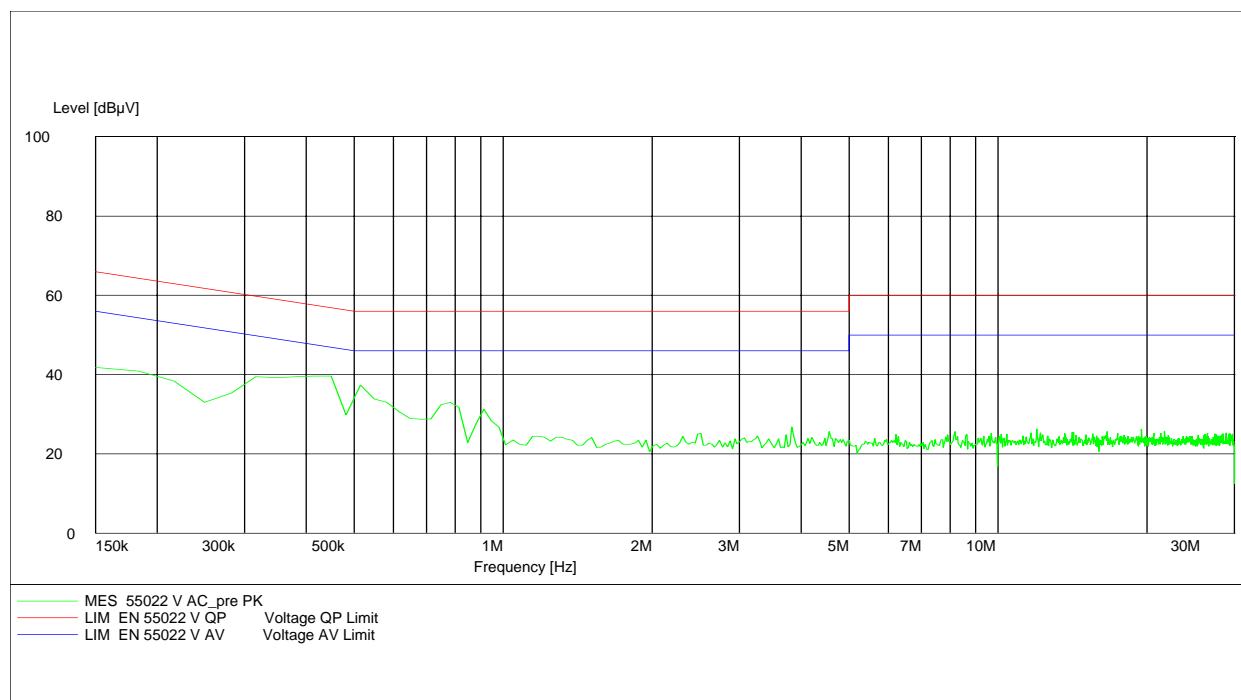
§ 15.107/207

### CISPR 22

EUT: EM1-A  
 Manufacturer: Sennheiser electronic GmbH & Co. KG  
 Operating Condition: Rx mode  
 Test Site: CETECOM ICT Services Room 006  
 Operator: Berg  
 Test Specification: EN 55022 V / CISPR22  
 Power Supply: 110V / 60 Hz  
 Start of Test: 20.10.05 / 10:52:59

### SCAN TABLE: "EN 55022 V"

Short Description:	Voltage Mains 1.60					
Start	Stop	Step	Detector	Meas. Time	IF Bandw.	Transducer
150.0 kHz	30.0 MHz	7.5 kHz	MaxPeak	100.0 ms	10 kHz	ESH3-Z5 L1 1458
			Average			



**REFERENCE NUMBER(S) OF TEST EQUIPMENT USED**  
 (for reference numbers see test equipment listing)  
**52-61**

**TEST EQUIPMENT AND ANCILLARIES USED FOR TESTS**

To simplify the identification on each page of the test equipment used, on each page of the test report, each item of test equipment and ancillaries such as cables are identified (numbered) by the Test Laboratory, below.

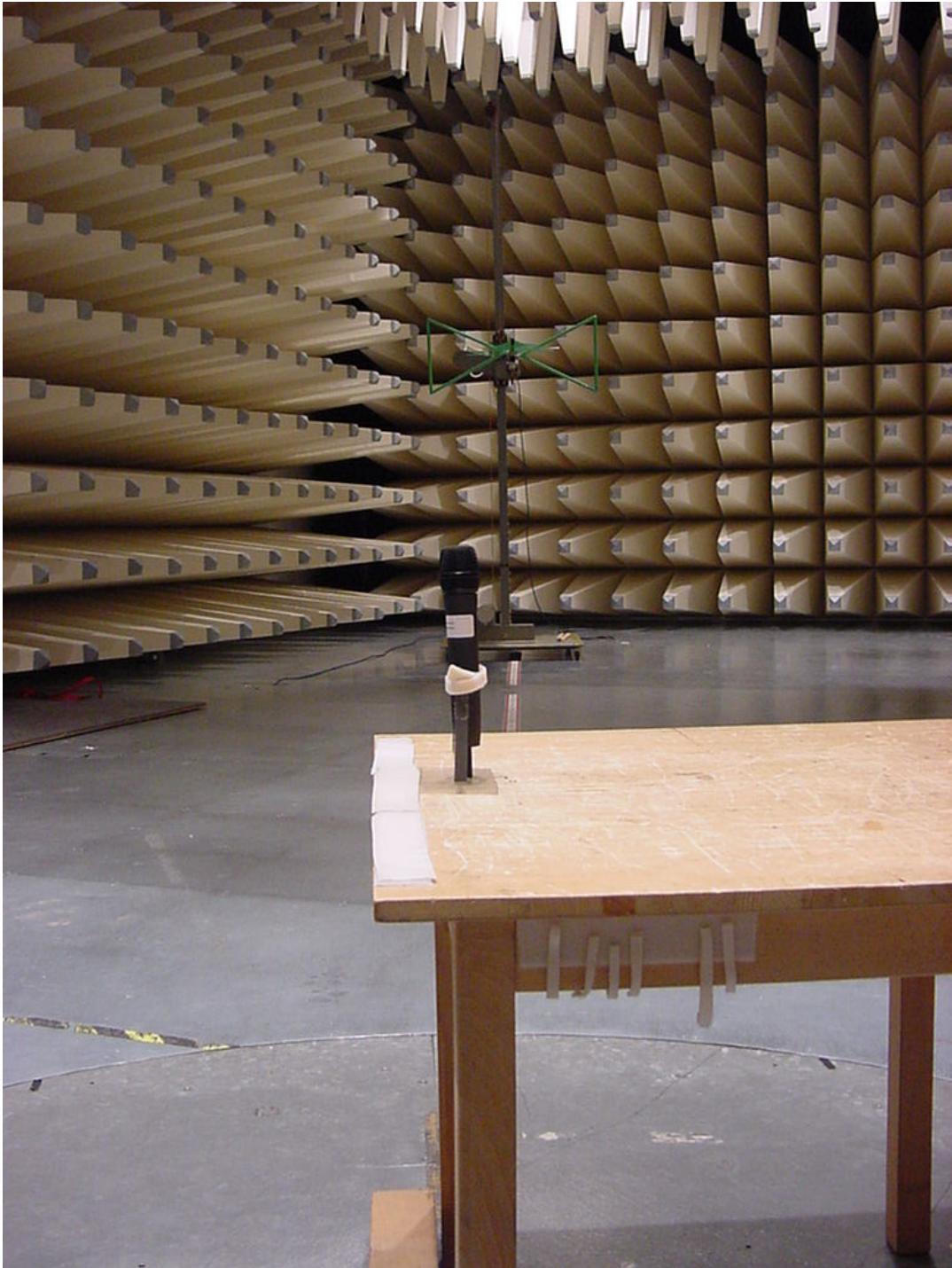
No	Instrument/Ancillary	Type	Manufacturer	Serial No.	Calibrated
01	Spectrum Analyzer	8566 A	Hewlett-Packard	1925A00257	Yes
02	Analyzer Display	8566 A	Hewlett-Packard	1925A00860	Yes
03	Oscilloscope	7633	Tektronix	230054	Yes
04	Radio Communication Analyzer	CMTA 54	Rohde & Schwarz	894 043/010	Yes
05	System Power Supply	6038 A	Hewlett-Packard	2848A07027	Yes
06	Signal Generator	8111 A	Hewlett-Packard	2215G00867	Yes
07	Signal Generator	8662 A	Hewlett-Packard	2224A01012	Yes
08	Function Generator	AFGU	Rohde & Schwarz	862 480/032	Yes
09	Regulating Transformer	MPL	Erfi	91350	n.a.
10	LISN	NNLA 8120	Schwarzbeck	8120331	Yes
11	Relay-Matrix	PSU	Rohde & Schwarz	893 285/020	Yes
12	Power-Meter	436 A	Hewlett-Packard	2101A12378	Yes
13	Power-Sensor	8484 A	Hewlett-Packard	2237A10156	Yes
14	Power-Sensor	8482 A	Hewlett-Packard	2237A00616	Yes
15	Modulation Meter	9008	Racal-Dana	2647	Yes
16	Frequency Counter	5340 A	Hewlett-Packard	1532A03899	Yes
17	Anechoic Chamber	---	MWB	87400/002	Yes
18	Spectrum Analyzer	85660 B	Hewlett-Packard	2747A05306	Yes
19	Analyzer Display	85662 A	Hewlett-Packard	2816A16541	Yes
20	Quasi Peak Adapter	85650 A	Hewlett-Packard	2811A01131	Yes
21	RF-Preselector	85685 A	Hewlett-Packard	2833A00768	Yes
22	Biconical Antenna	3104	Emco	3758	Yes
23	Log. Per. Antenna	3146	Emco	2130	Yes
24	Double Ridged Horn	3115	Emco	3088	Yes
25	EMI-Testreceiver	ESAI	Rohde & Schwarz	863 180/013	Yes
26	EMI-Analyzer-Display	ESAI-D	Rohde & Schwarz	862 771/008	Yes
27	Biconical Antenna	HK 116	Rohde & Schwarz	888 945/013	Yes
28	Log. Per. Antenna	HL 223	Rohde & Schwarz	825 584/002	Yes
29	Relay-Switch-Unit	RSU	Rohde & Schwarz	375 339/002	Yes
30	Highpass	HM985955	FSY Microwave	001	n.a.
31	Amplifier	P42-GA29	Tron-Tech	B 23602	Yes
32	Anechoic Chamber		Frankonia		Yes
33	Control Computer	PSM 7	Rohde & Schwarz	834 621/004	Yes
34	EMI Test Receiver	ESMI	Rohde & Schwarz	827 063/010	Yes
35	EMI Test Receiver	Display	Rohde & Schwarz	829 808/010	Yes

**TEST EQUIPMENT AND ANCILLARIES USED FOR TESTS**

To simplify the identification on each page of the test equipment used, on each page of the test report, each item of test equipment and ancillaries such as cables are identified (numbered) by the Test Laboratory, below.

No	Instrument/Ancillary	Type	Manufacturer	Serial No.	Calibrated
36	Control Computer	HD 100	Deisel	100/322/93	n.a.
37	Relay Matrix	PSN	Rohde & Schwarz	829 065/003	Yes
38	Control Unit	GB 016 A2	Rohde & Schwarz	344 122/008	Yes
39	Relay Switch Unit	RSU	Rohde & Schwarz	316 790/001	Yes
40	Power Supply	6032A	Hewlett Packard	2846A04063	Yes
41	Spectrum Monitor	EZM	Rohde & Schwarz	883 720/006	n.a.
42	Measuring Receiver	ESH 3	Rohde & Schwarz	890 174/002	Yes
43	Measuring Receiver	ESVP	Rohde & Schwarz	891 752/005	Yes
44	Bicon Ant. 20-300MHz	HK 116	Rohde & Schwarz	833 162/011	Yes
45	Logper Ant. 0.3-1 GHz	HL 223	Rohde & Schwarz	832 914/010	Yes
46	Amplifier 0.1-4 GHz	AFS4	Miteq Inc.	206461	Yes
47	Logper Ant. 1-18 GHz	HL 024 A2	Rohde & Schwarz	342 662/002	Yes
48	Polarisation Network	HL 024 Z1	Rohde & Schwarz	341 570/002	Yes
49	Double Ridged Horn Antenna 1-26.5 GHz	3115	EMCO	9107-3696	Yes
50	Microw. Sys. Amplifier 0.5- 26.5 GHz	8317A	Hewlett Packard	3123A00105	Yes
51	Audio Analyzer	UPD	Rohde & Schwarz	1030.7500.04	Yes
52	Controler	PSM 7	Rohde & Schwarz	883 086/026	Yes
53	DC V-Network	ESH3-Z6	Rohde & Schwarz	861 406/005	Yes
54	DC V-Network	ESH3-Z6	Rohde & Schwarz	893 689/012	Yes
55	AC 2 Phase V-Network	ESH3-Z5	Rohde & Schwarz	861 189/014	Yes
56	AC 2 Phase V-Network	ESH3-Z5	Rohde & Schwarz	894 981/019	Yes
57	AC-3 Phase V-Network	ESH2-Z5	Rohde & Schwarz	882 394/007	Yes
58	Power Supply	6032A	Rohde & Schwarz	2933A05441	Yes
59	RF-Test Receiver	ESVP.52	Rohde & Schwarz	881 487/021	Yes
60	Spectrum Monitor	EZM	Rohde & Schwarz	883 086/026	n.a.
61	RF-Test Receiver	ESH3	Rohde & Schwarz	881 515/002	Yes
62	Relay Matrix	PSU	Rohde & Schwarz	882 943/029	Yes
63	Relay Matrix	PSU	Rohde & Schwarz	828 628/007	Yes
64	Spectrum Analyzer	FSIQ 26	Rohde & Schwarz	119.6001.27	Yes
65	Spectrum Analyzer	HP 8565E	Hewlett Packard	3473A00773	Yes
68					

**Test setup**  
**Radiated Emissions**  
**SKM3-A**



SKM3-A



Test site  
Radiated Emissions  
EM1



EM1



Test site  
Conducted emissions





**Photographs of the equipment**

Photograph No.: 1  
**SKM3**



Photograph No.: 2  
**SKM3**



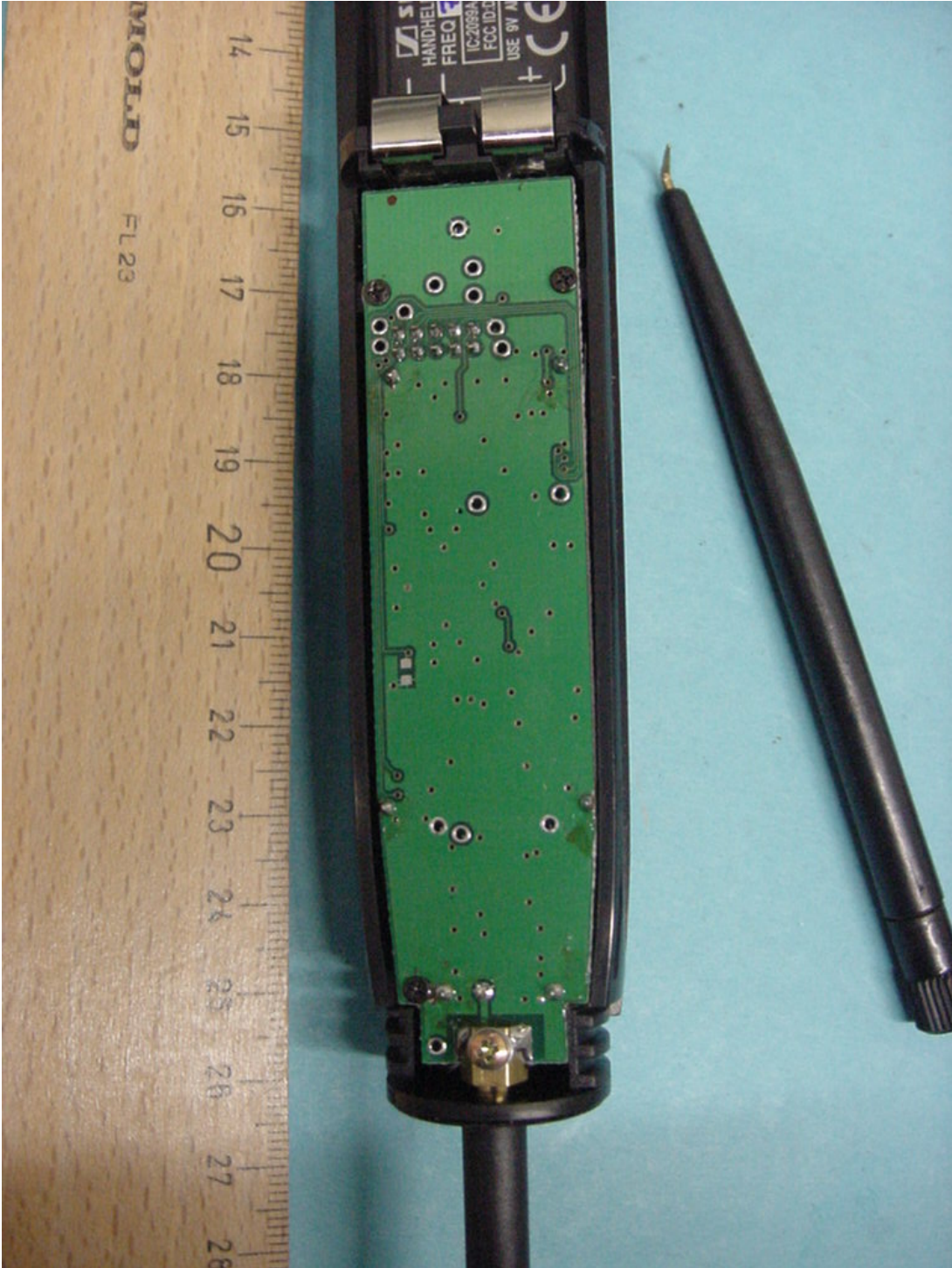
Photograph No.: 3

SKM3



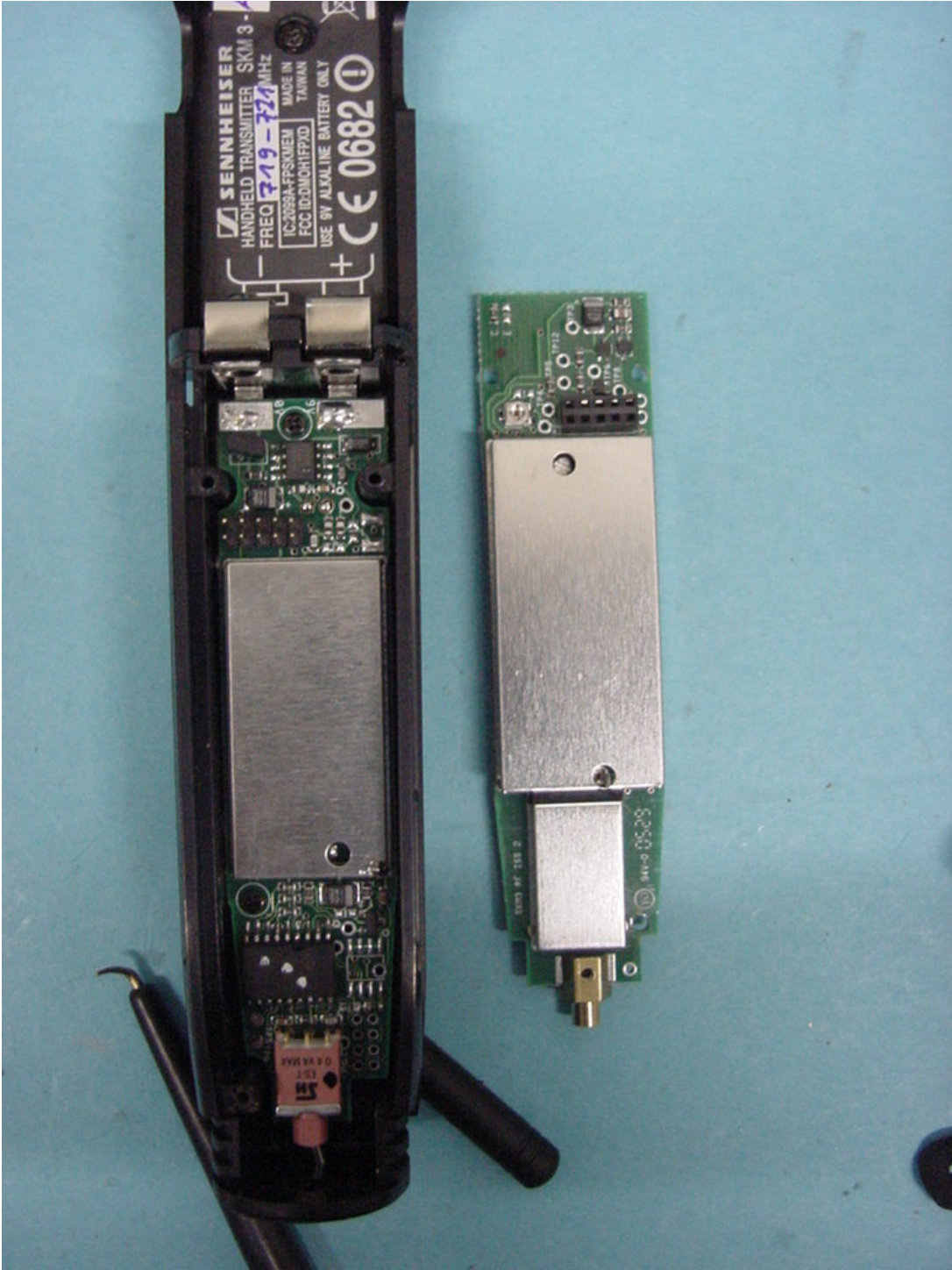
Photograph No.: 4

SKM3



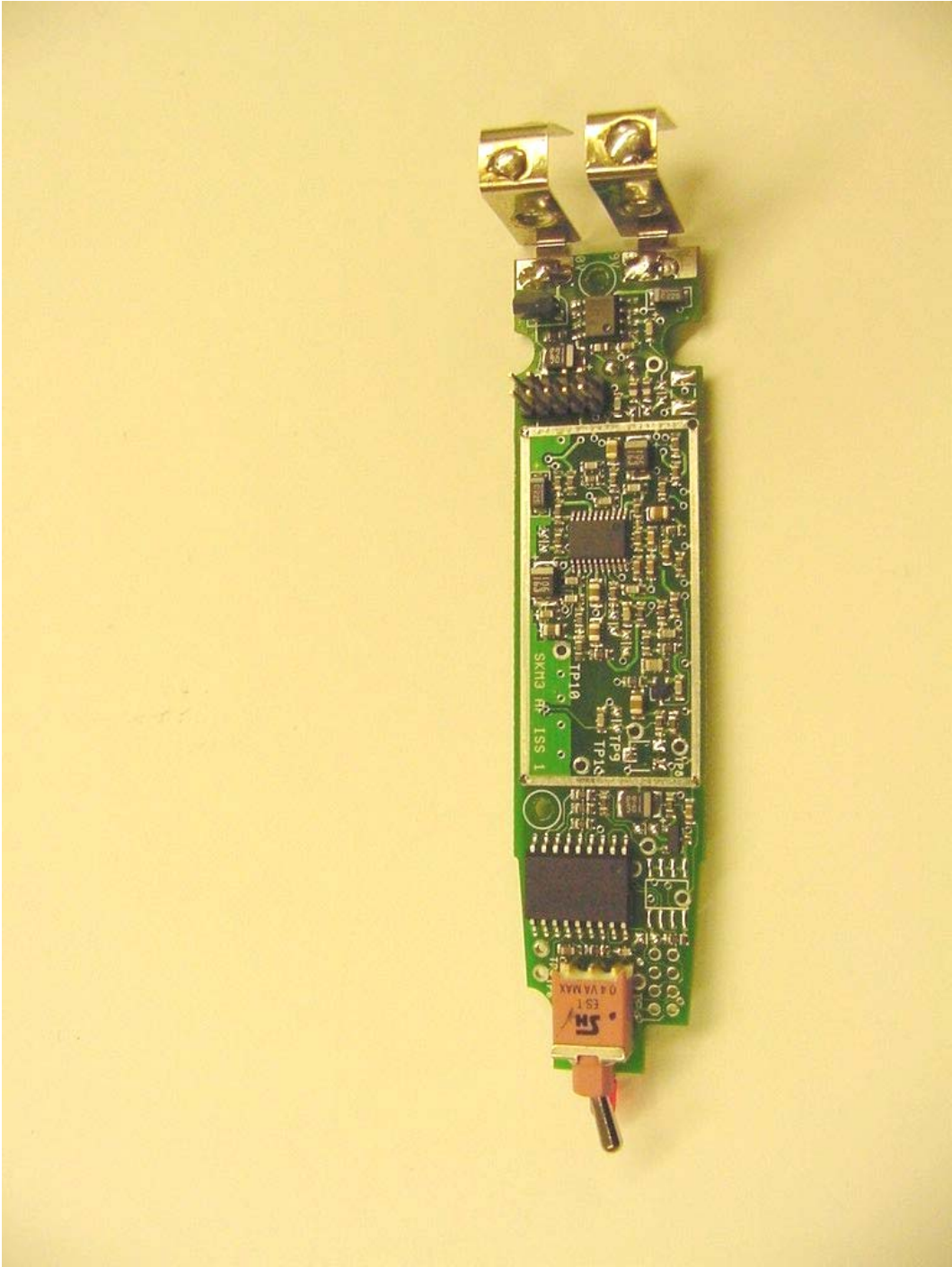
Photograph No.: 5

SKM3



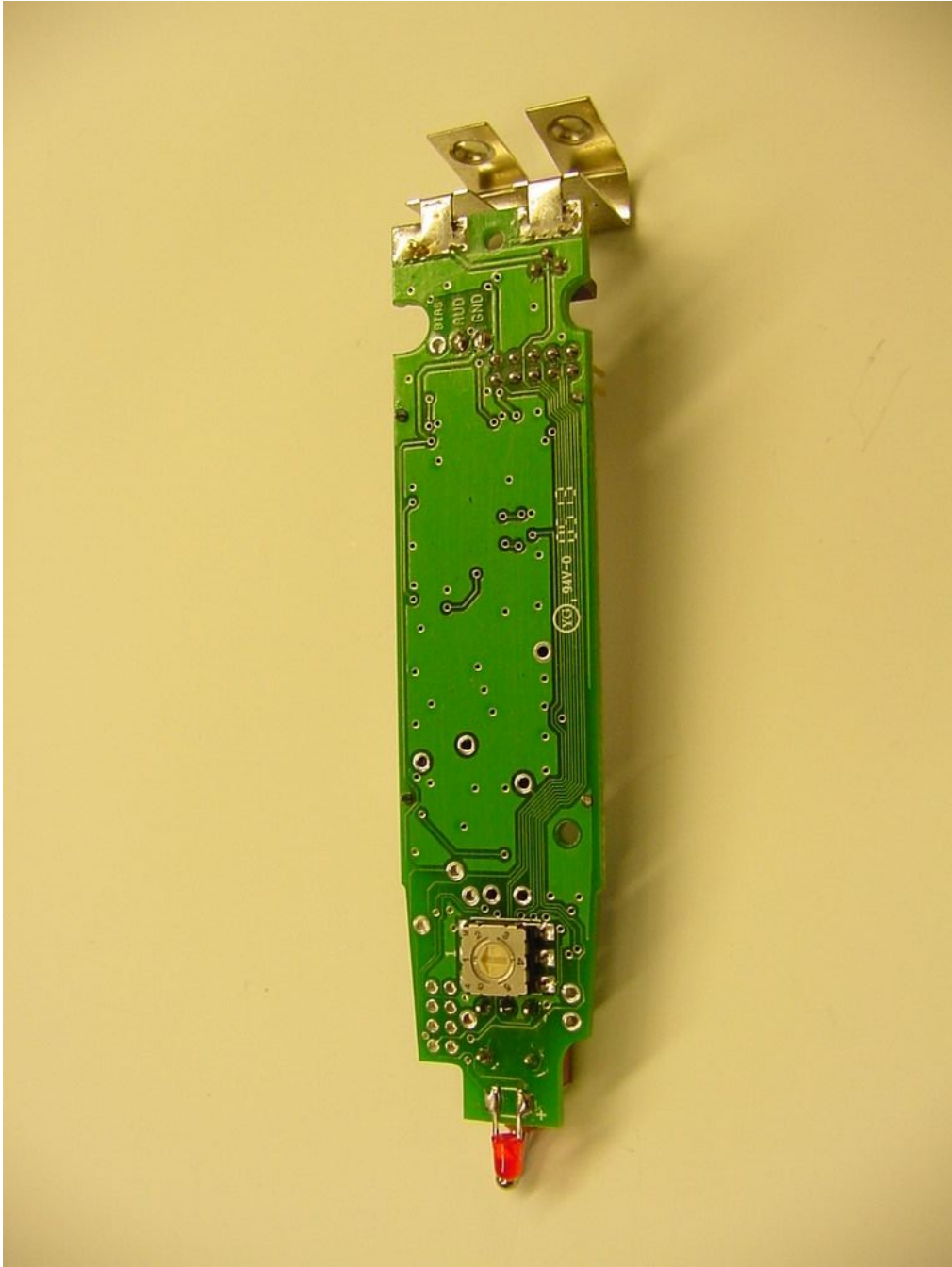
Photograph No.: 7

SKM3



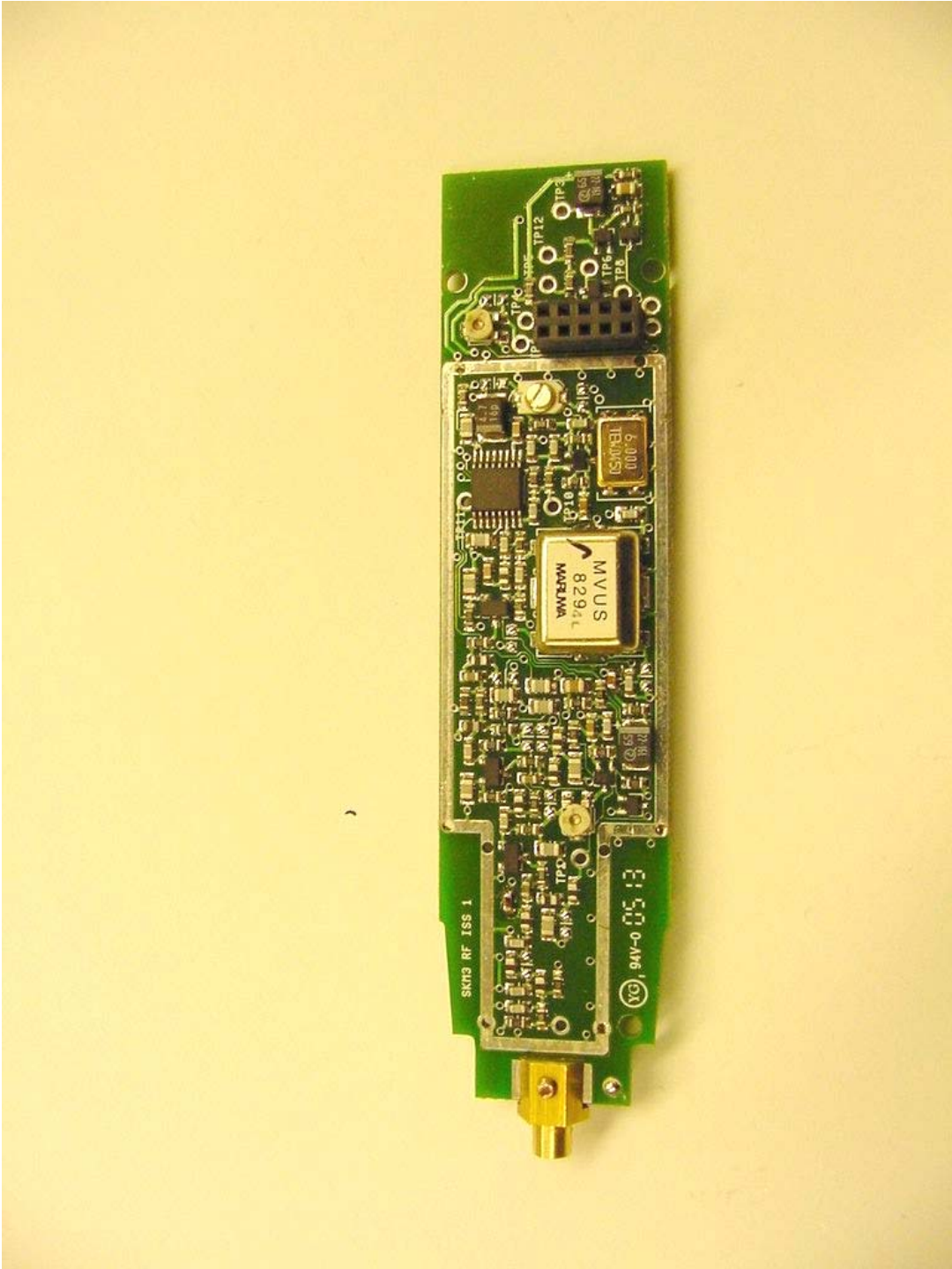
Photograph No.: 8

SKM3



Photograph No.: 9

SKM3





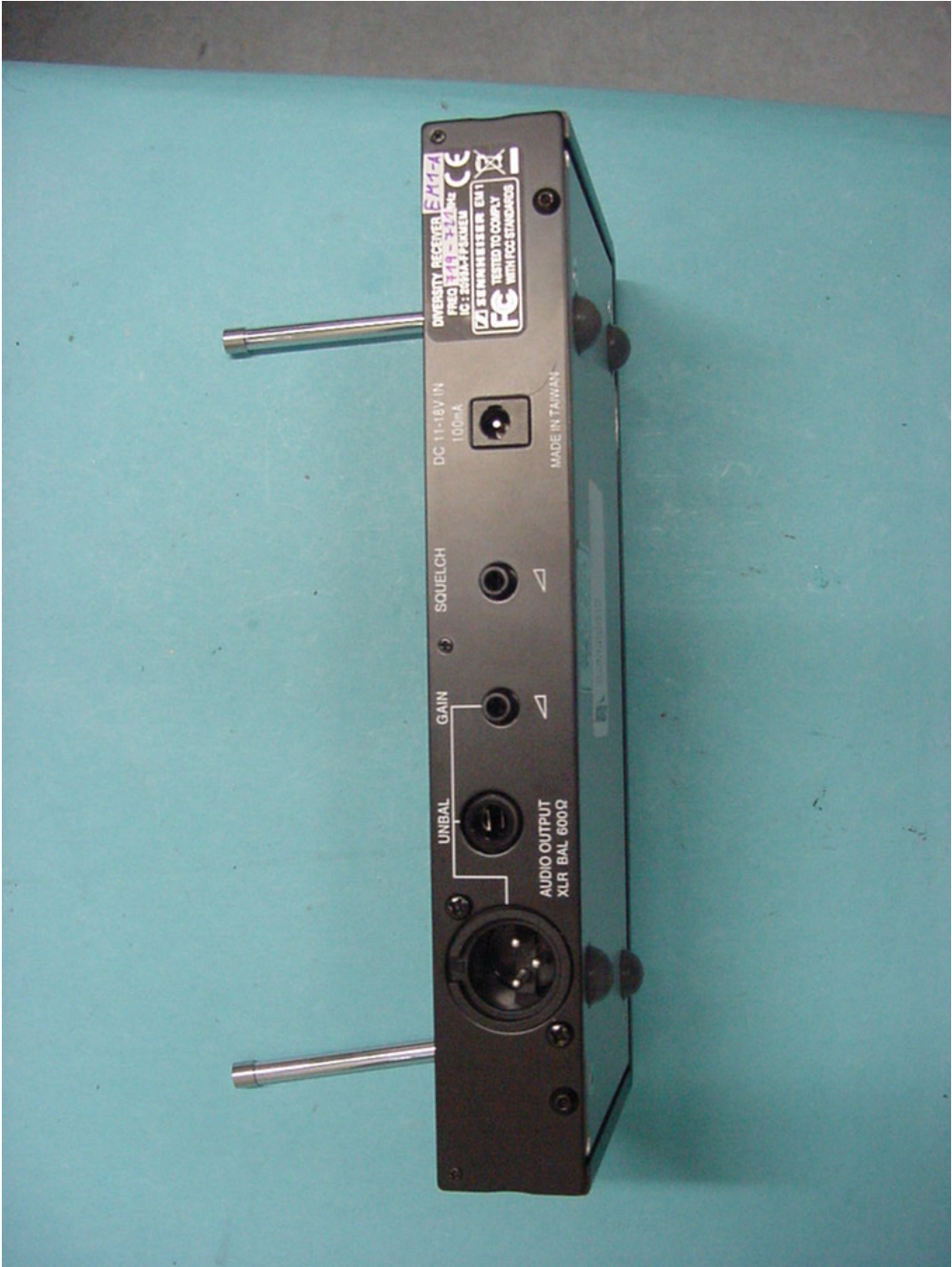
Photograph No.: 10

EM1



Photograph No.: 11

EM1



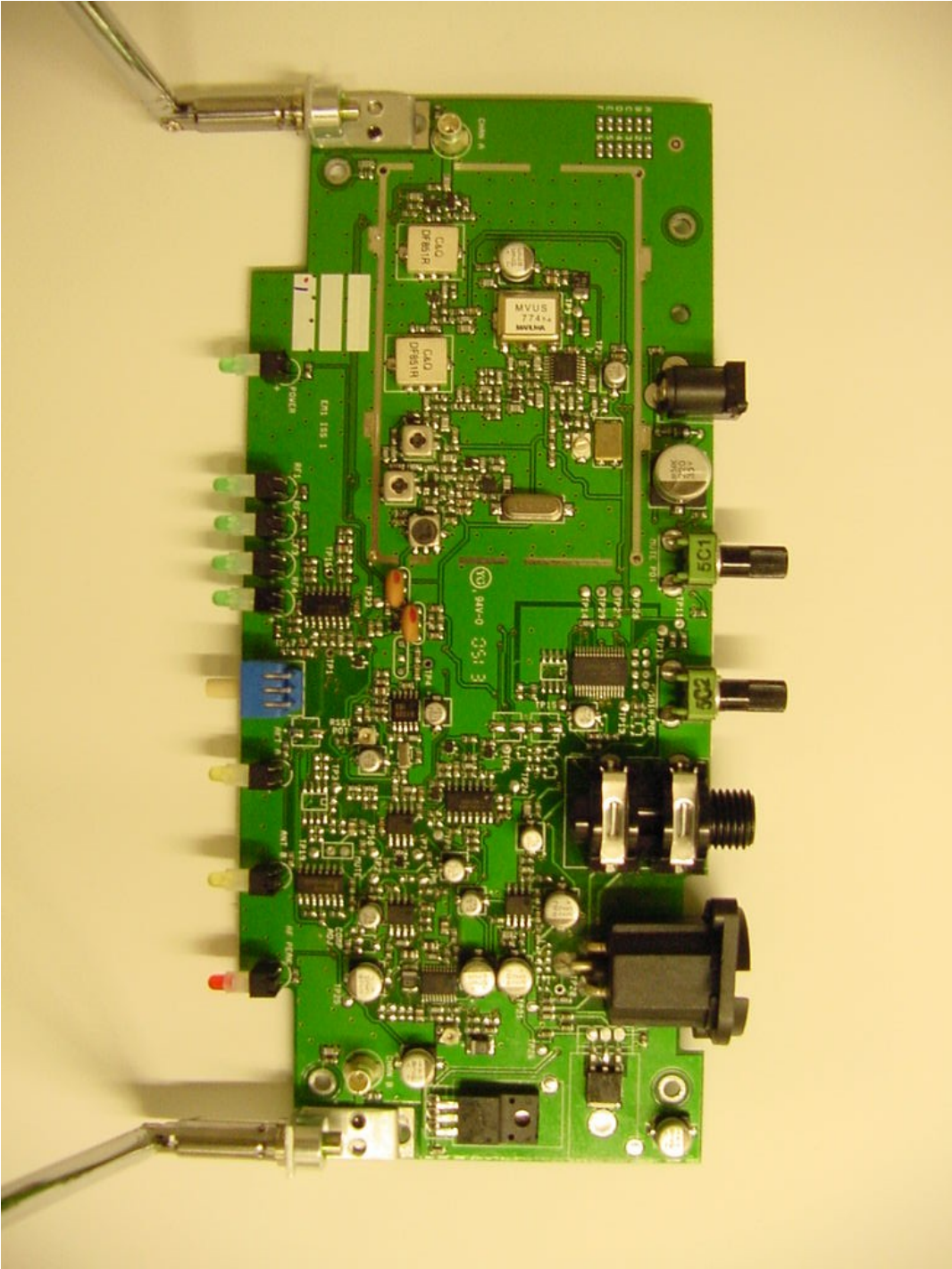
Photograph No.: 12

EM1



Photograph No.: 13

EM1



Photograph No.: 14

EM1

