 **SENNHEISER**

PLUG ON
TRANSMITTER

SKP 300 

FREQ. RANGE-A: 516-558 MHz

IDENT. NO.: 544441

SER. NO.: 1441115079


DESIGNED IN GERMANY.
ASSEMBLED IN USA

Model: SKP 300 G3



IC: 2099A-G3SKP300
CE06820
FCC ID: DM0G3SKP300



 **SENNHEISER**

PLUG ON
TRANSMITTER

SKP 300 

FREQ. RANGE-B: 626-668 MHz

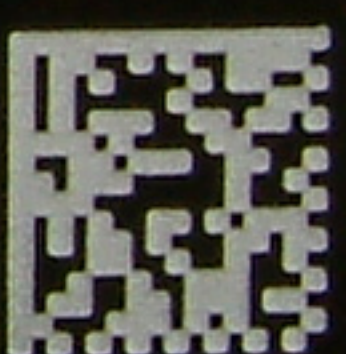
IDENT. NO.: 544443

SER. NO.: 1441115091

DESIGNED IN GERMANY


ASSEMBLED IN USA

Model: SKP 300 G3



IC: 2099A-G3SKP300
CE06820
FCC ID: DMNG3SKP300



 **SENNHEISER**

PLUG ON
TRANSMITTER

SKP 300 



FREQ. RANGE-G: 566-608 MHz

IDENT. NO.: 544442

SER. NO.: 144115082

DESIGNED IN GERMANY.

ASSEMBLED IN USA

Model SKP 300 G3

IC: 2099A-G3SKP300
 **0682**
FCC ID: DM0G3SKP300

