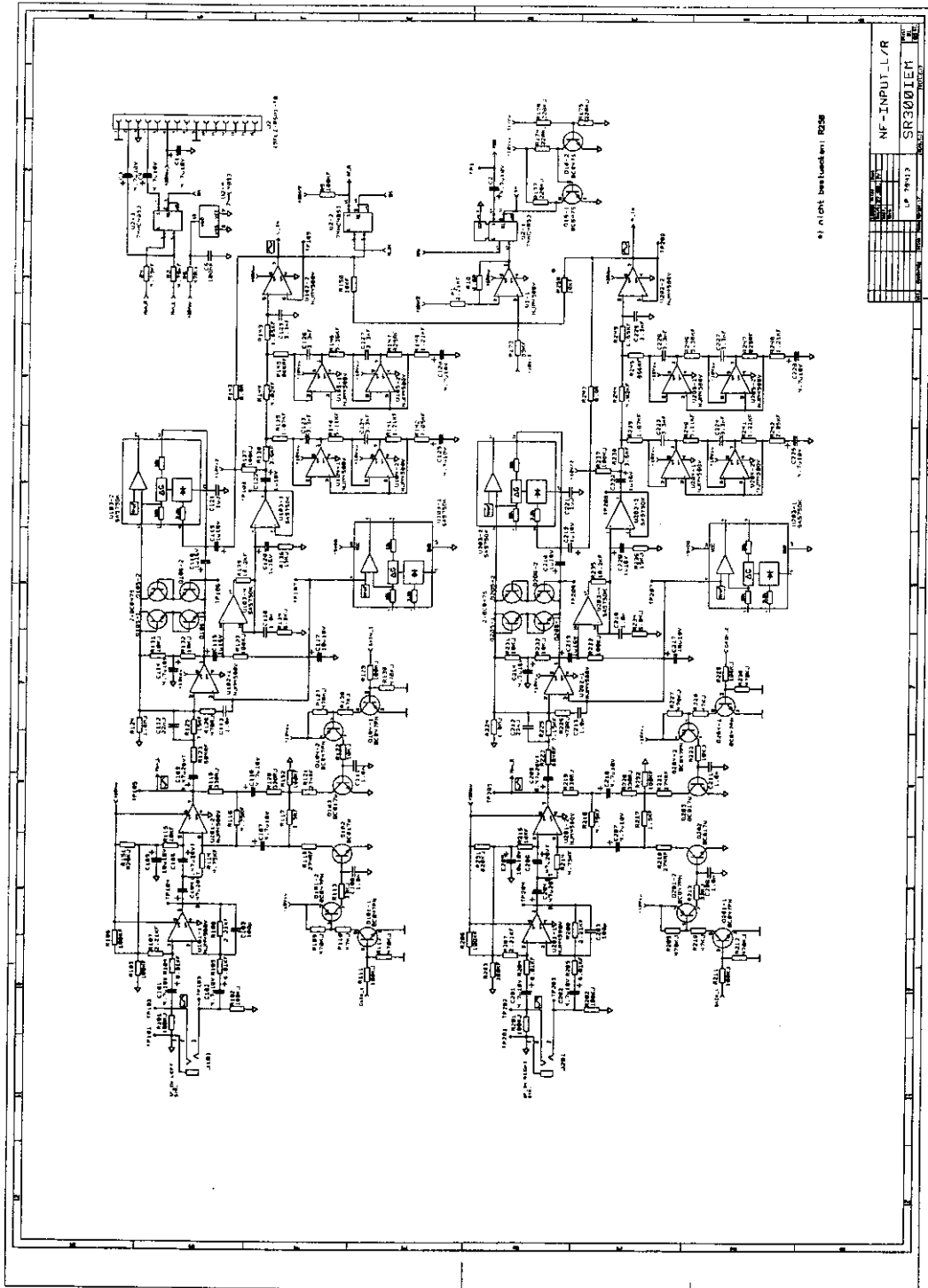
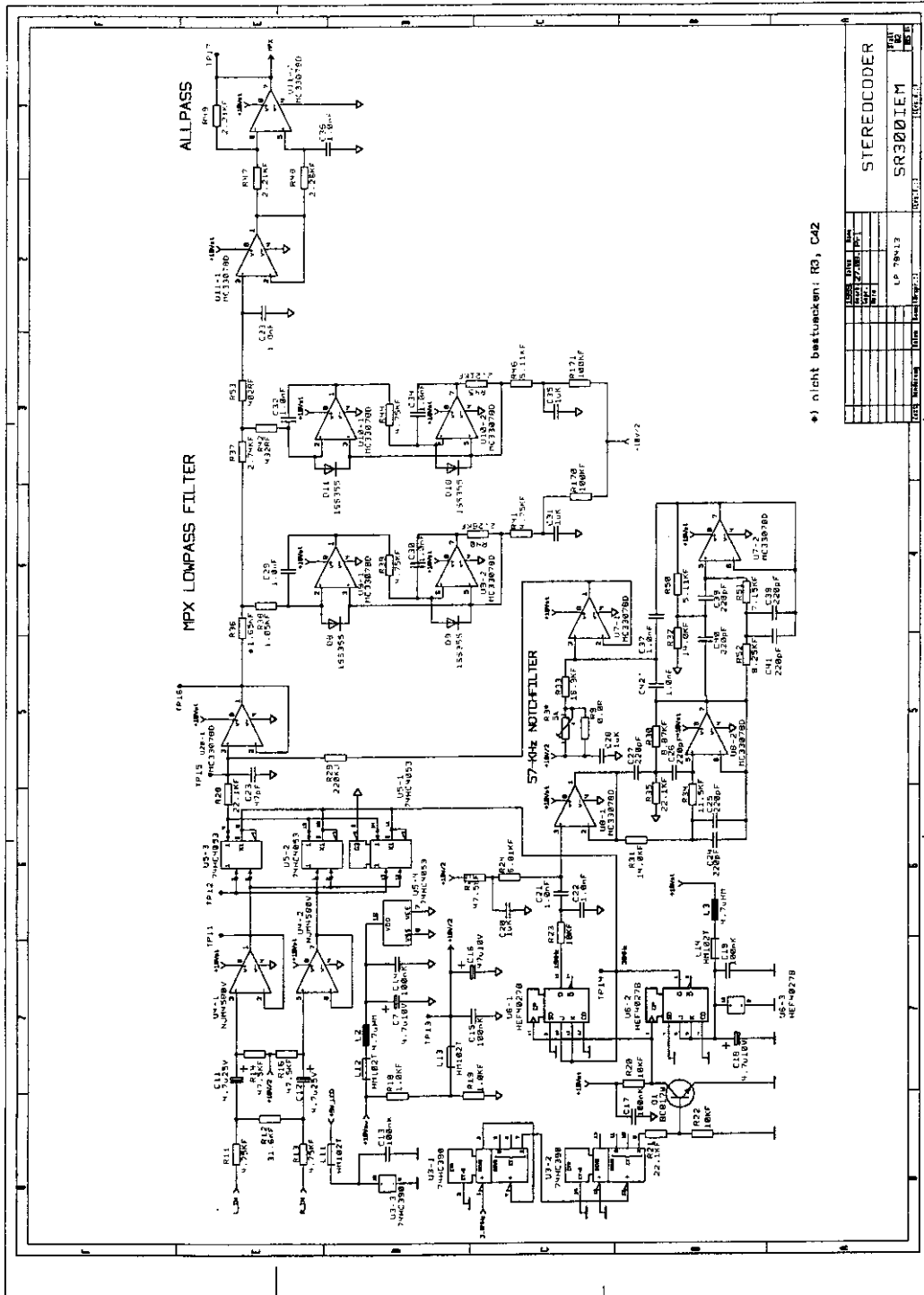


5.2 Schematic Diagrams

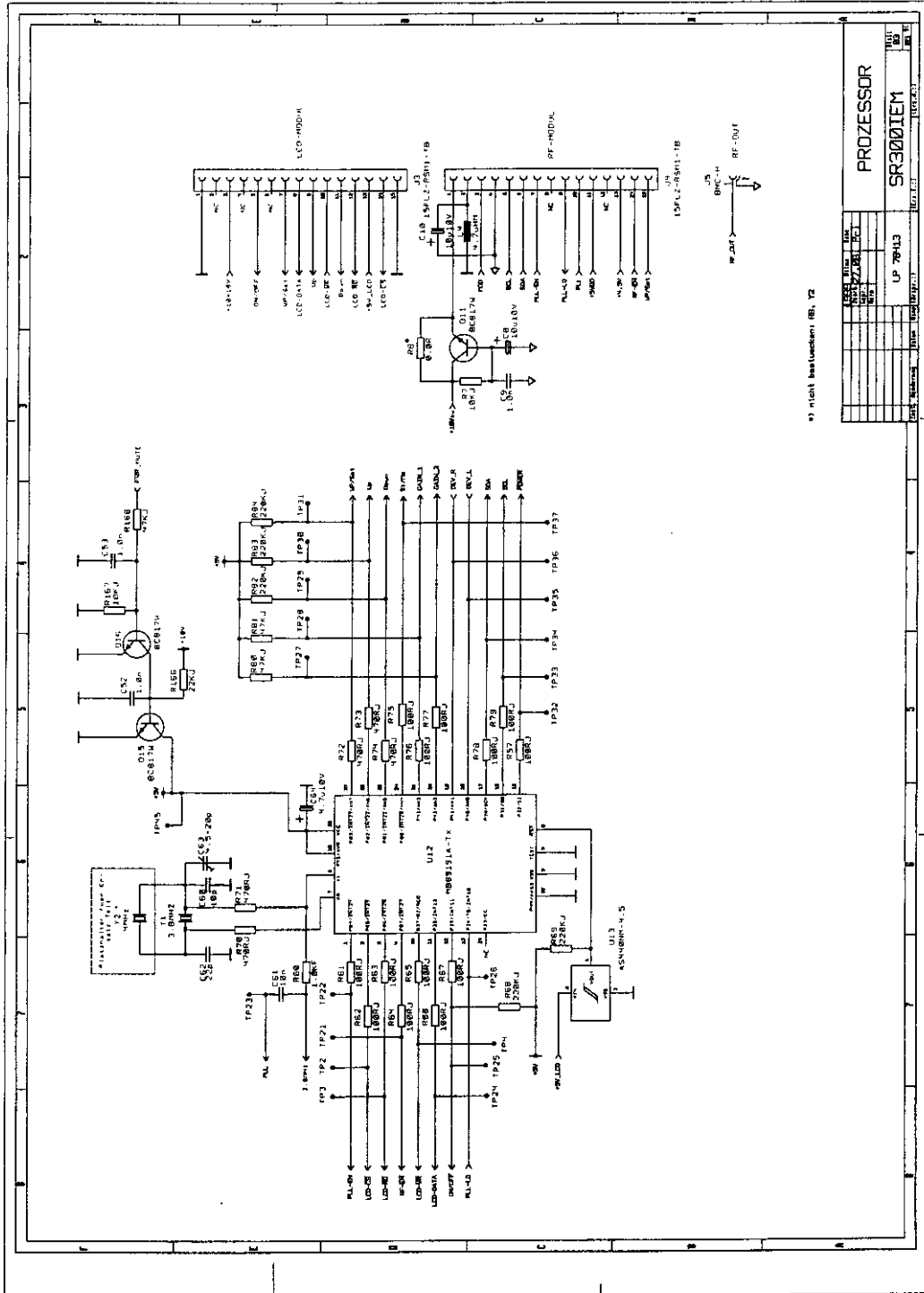
5.2.1 AF-Input Circuits



## 5.2.2 MPX Stereo Coder

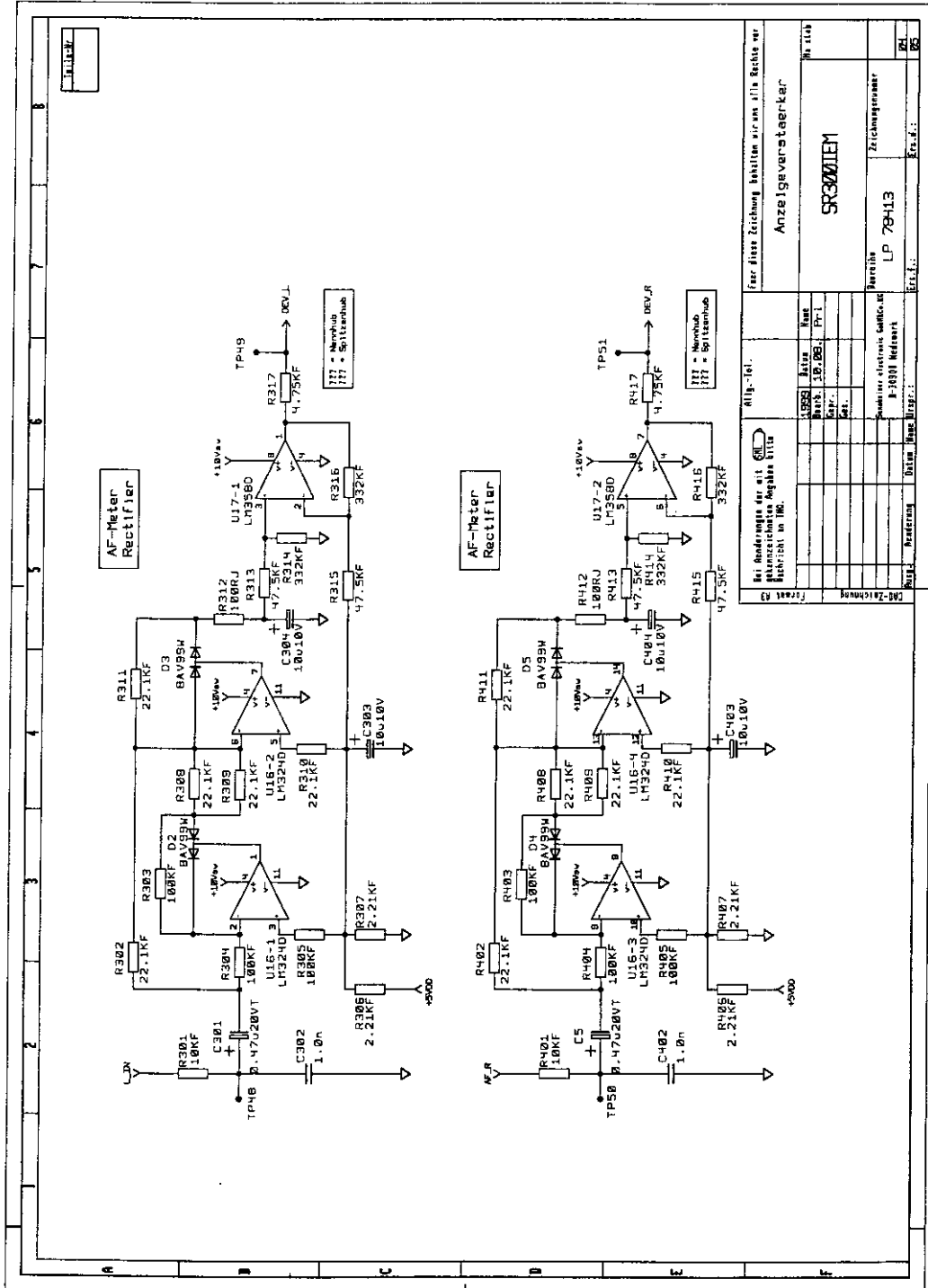


### 5.2.3 Control Processor



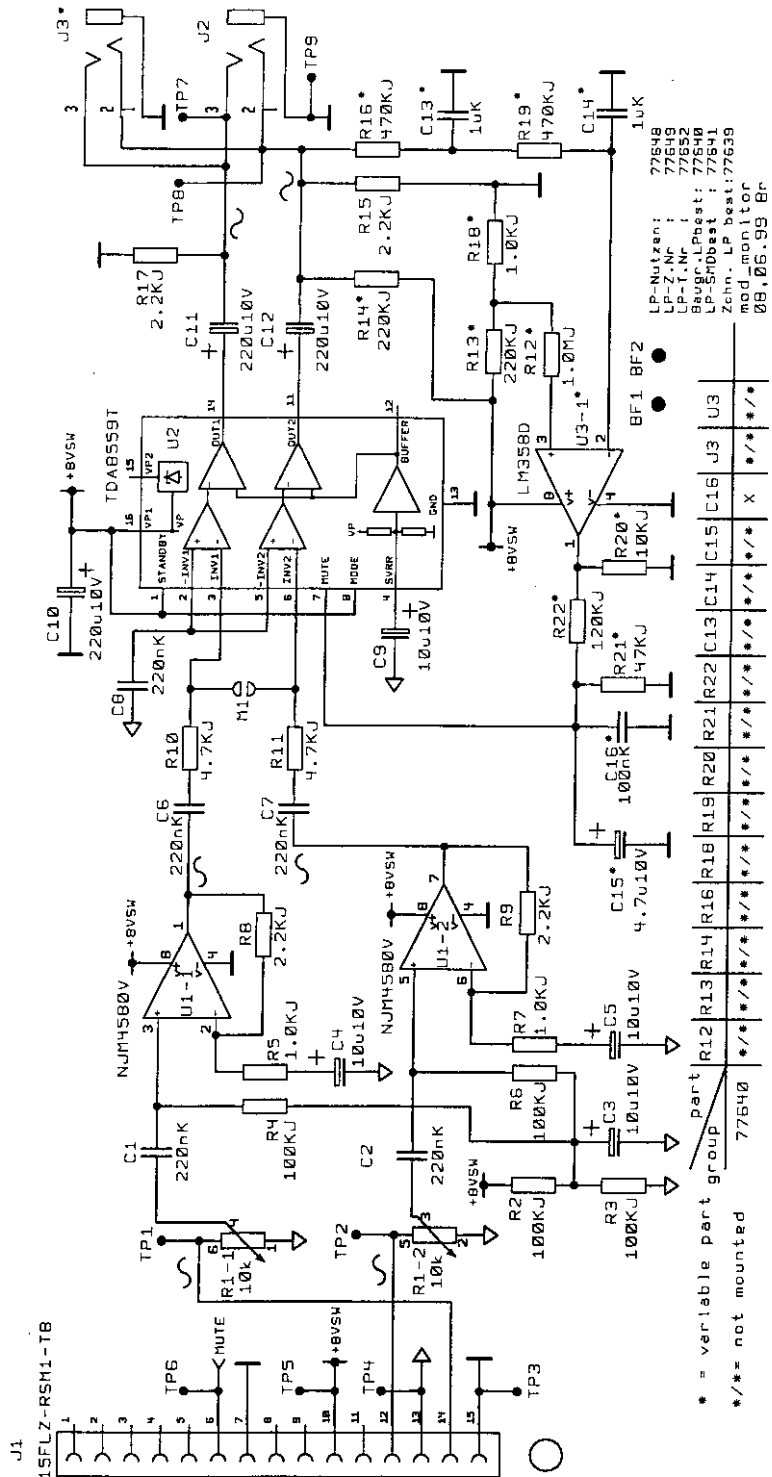
\*) nicht bestückt (S. 12)

## 5.2.4 Modulation Meter Rectifier

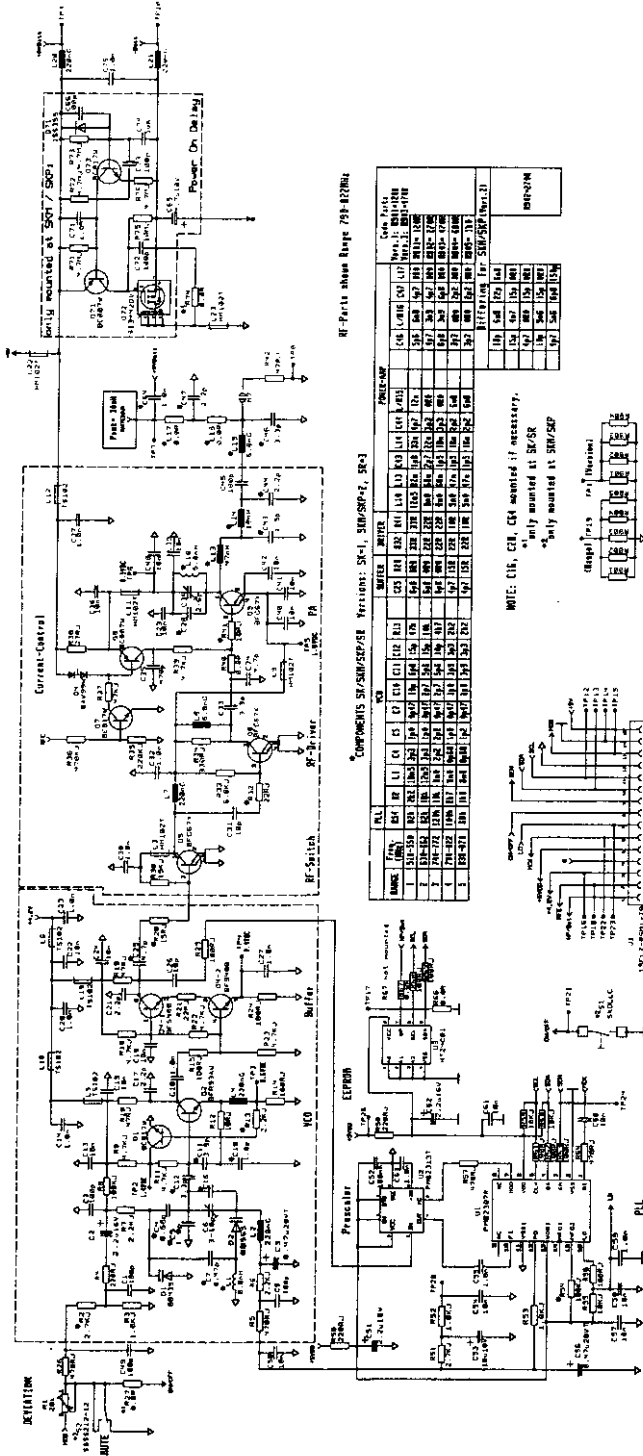




**5.2.6 Monitor Module**

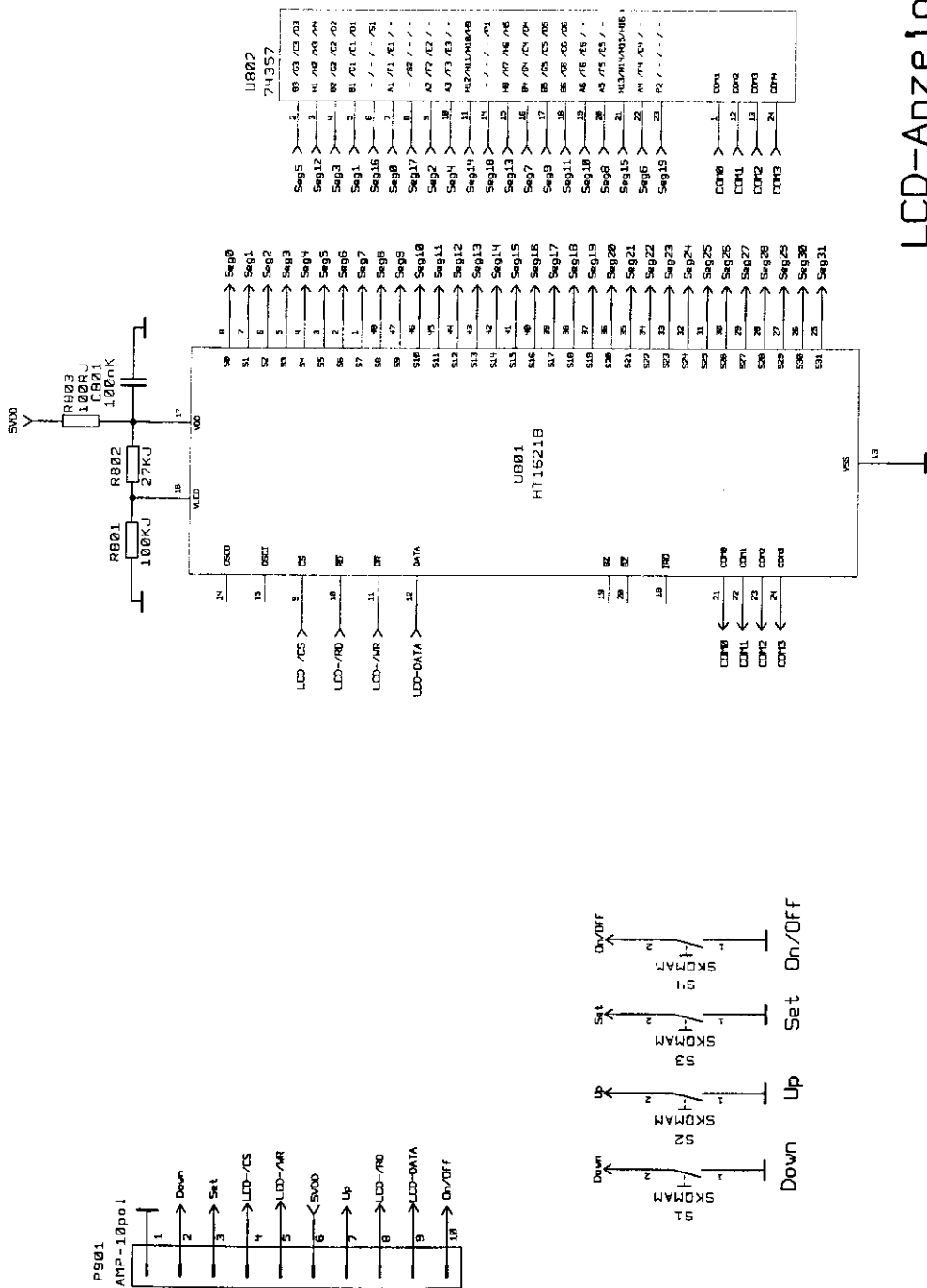


## 5.2.7 RF-Module



SK 1X8 U.F  
HF-Teil  
STRÖHLER  
21.06.99-400  
22.06.99-400  
23.06.99-400  
24.06.99-400  
25.06.99-400  
26.06.99-400  
27.06.99-400  
28.06.99-400  
29.06.99-400  
30.06.99-400

5.2.8 Display Module

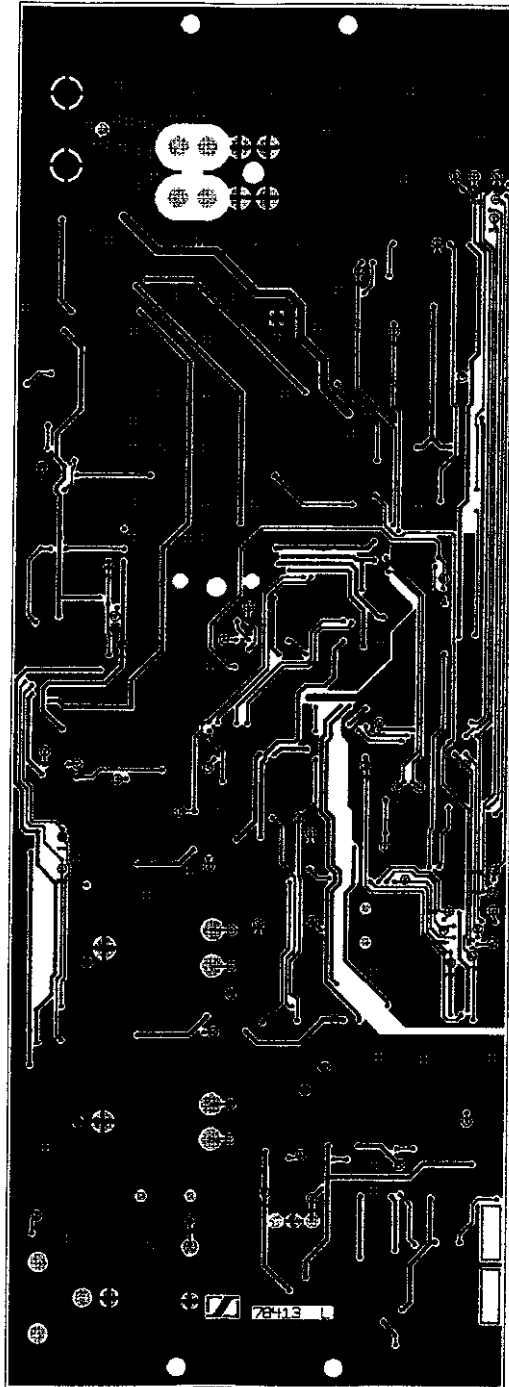


LCD-Anzeige  
 LP 77163  
 26.08.99

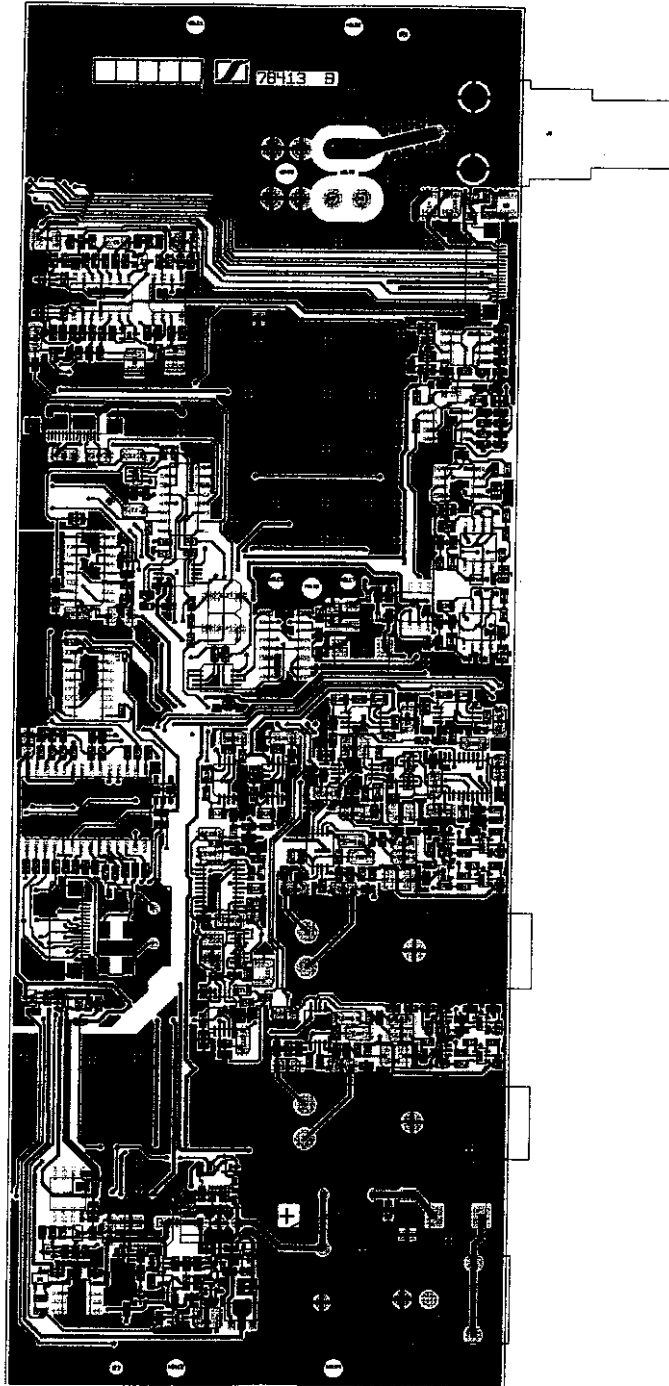


5.3 Printed Circuit Board Layouts

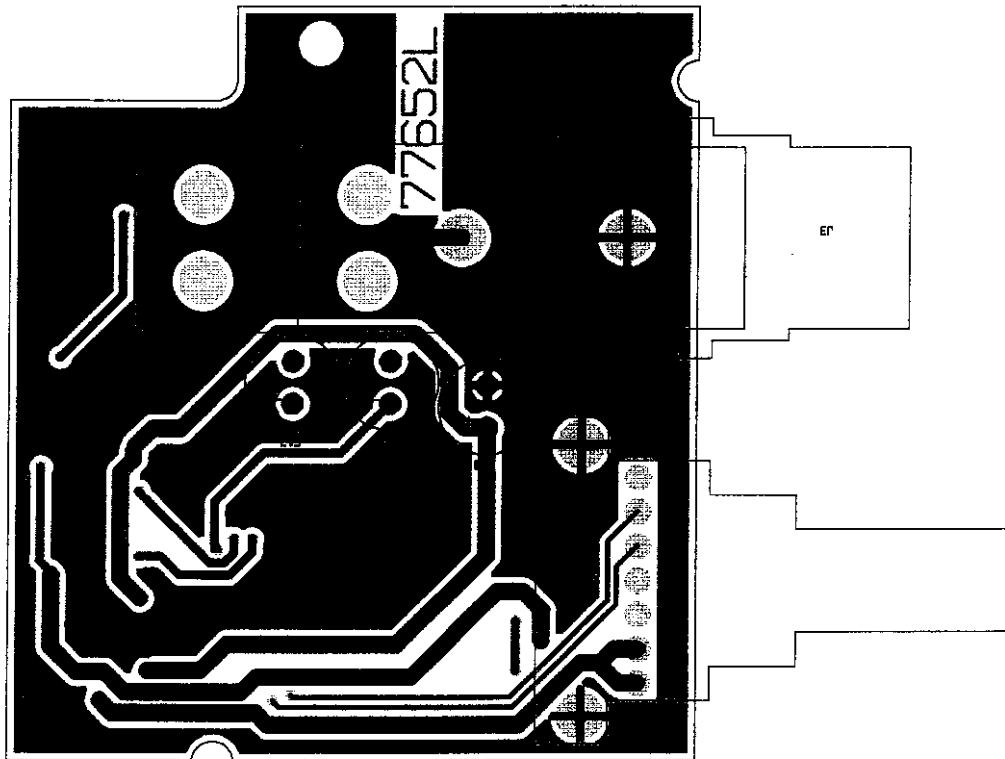
5.3.1.f Main Board (front)



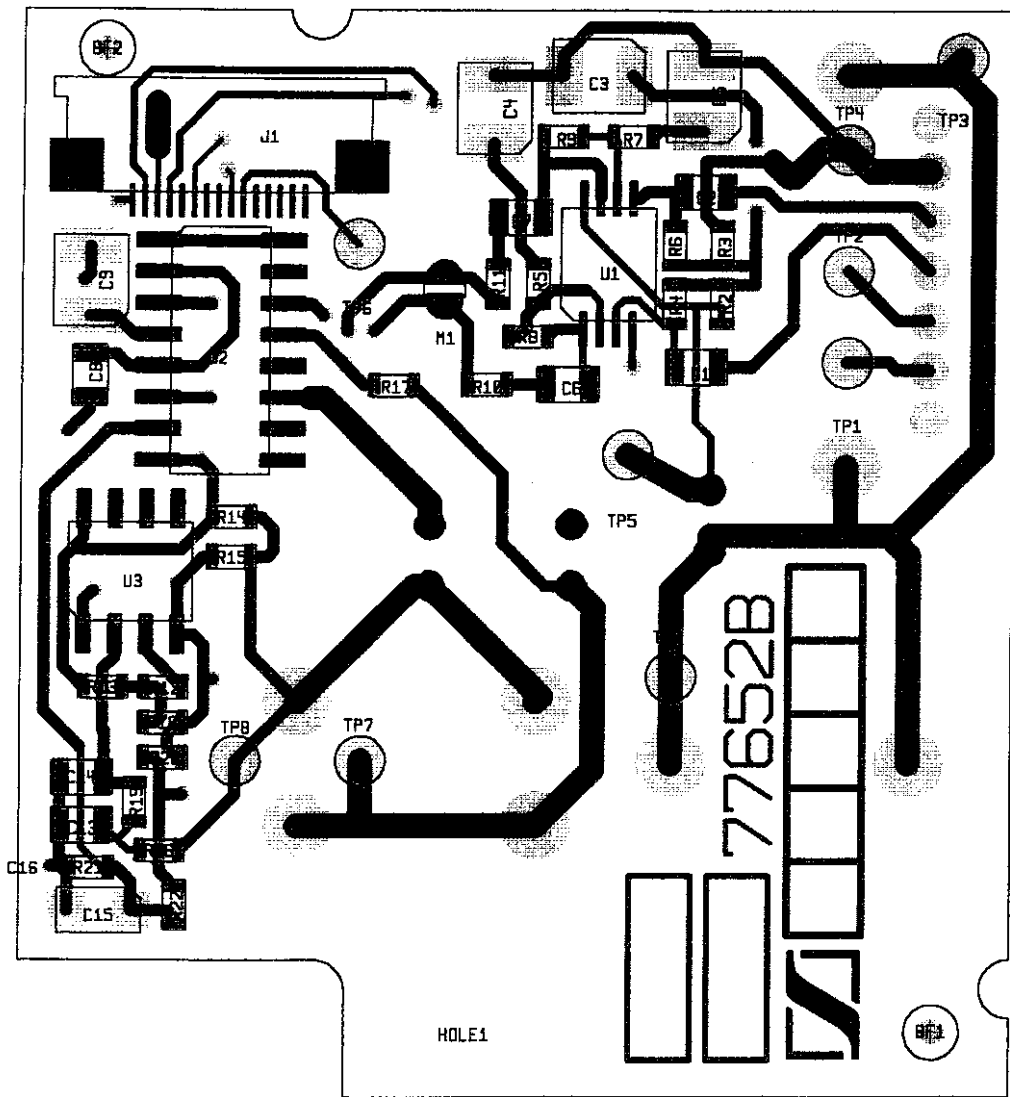
5.3.1.b Main Board (back)



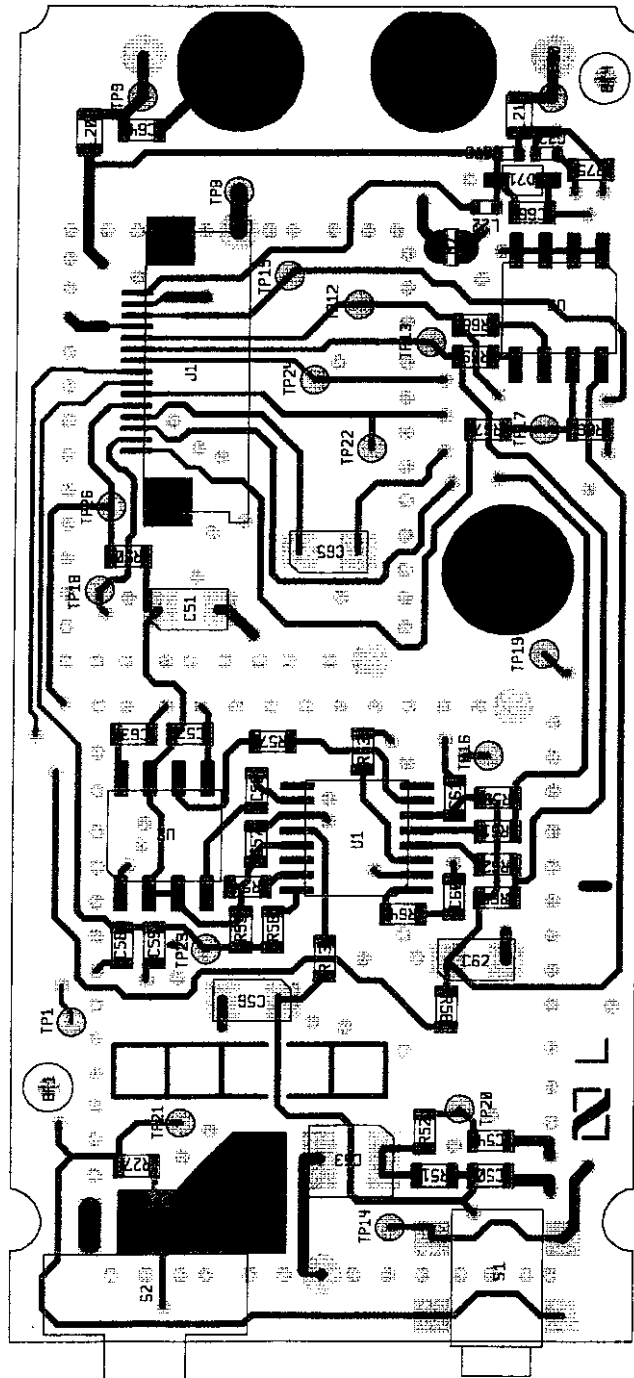
5.3.2 f Monitor Module (front)



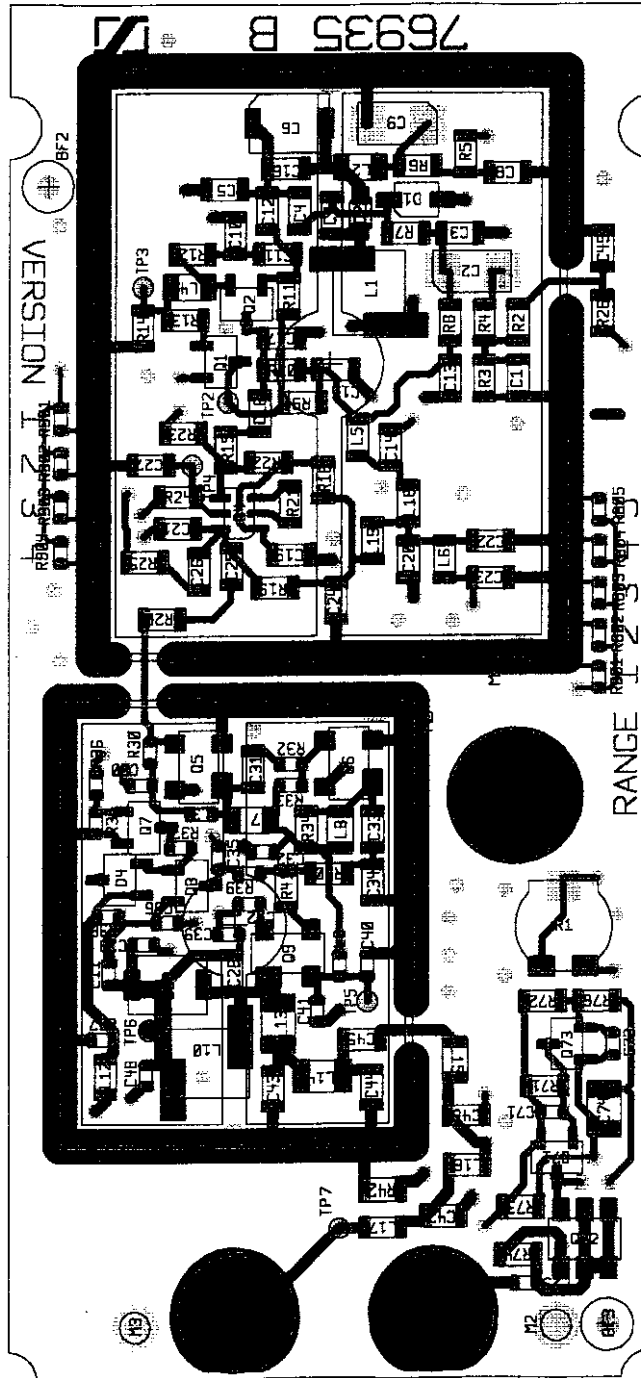
5.3.2 b Monitor Module (back)



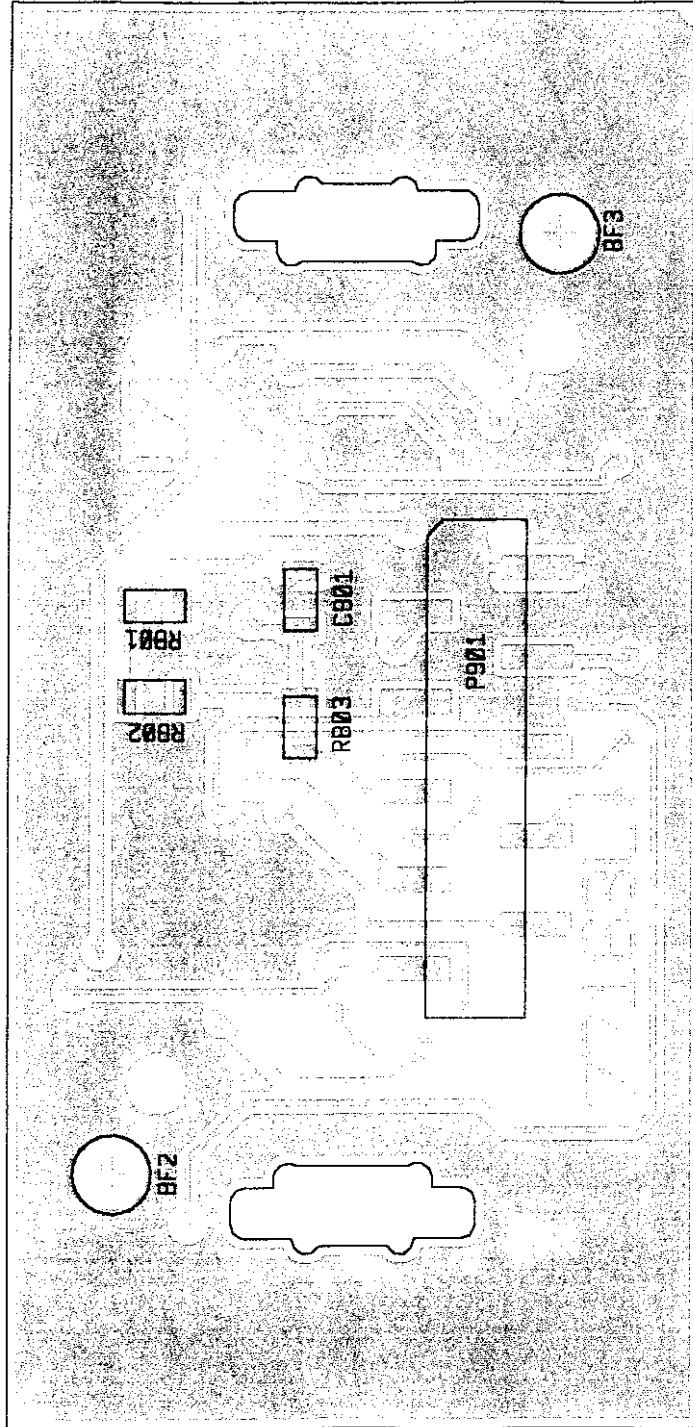
5.3.3.f RF-Module (front)



5.3.3.b RF-Module (back)



5.3.4.f Display Module (front)



5.3.4.b Display Module (back)

