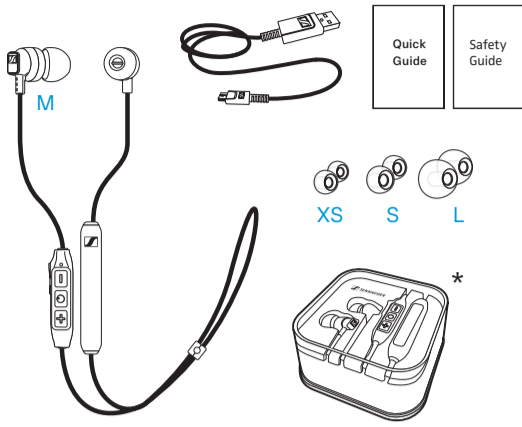


# CX 6.00BT

**Quick Guide**  
 Kurzanleitung  
 Guide rapide  
 Instrucciones resumidas  
 Guida rapida  
 Beknopte handleiding  
 Guida rápida  
 Kvikguide  
 Snabbguide  
 Pikaopas

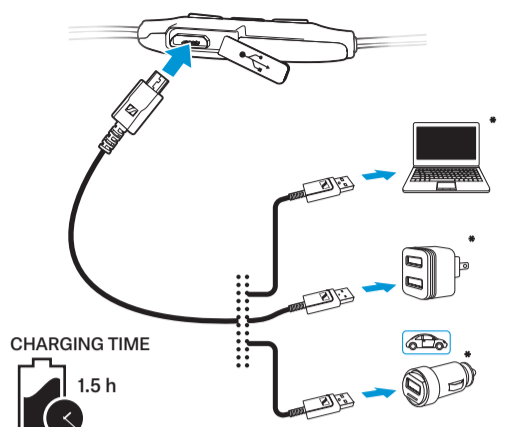
## SENNHEISER

**Package includes** | Ohrpolster austauschen | Remplacer les coussinets d'oreille | Cambiar las almohadillas para las orejas | Substituir as almofadas | Oorkussens vervangen | Sostituzione dei cuscinetti auricolari | Udskiftning af ørepuder | Ersätt dina öronkuddar | Korvatyynyjen vaihtaminen



\* shown with case.

**Charging the headphones** | Kopfhörer laden | Chargement du casque | Cargar los auriculares | Carica delle cuffie | De hoofdtelefoon opladen | Carregar os auscultadores | Ładowanie słuchawek | Opladning af hovedtelefoner | Kuulokkeiden lataaminen | Carregar os auscultadores

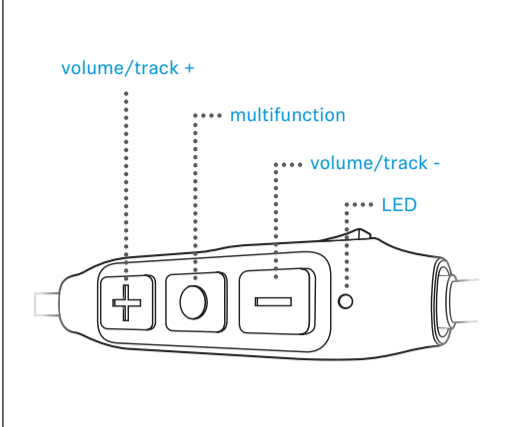


CHARGING TIME



\* not included.

**Control buttons** | Bedienungstasten | Touches de commande | Botones de control | Botões de controlo | Regel-buttons | Pulsanti di controllo | Styreknapper | Kontrollknappar | Ohjauspainikkeet



**Instruction manuals and product support** | Bedienungsanleitungen und Produktbetreuung | Manuels d'utilisation et assistance produit |



Instrucciones de uso y soporte del producto | Manuali d'istruzioni e supporto prodotto | Bedieningsinstructies en productondersteuning | Manuais de instruções e assistência ao produto | Instrukcje obsługi i wsparcie produktowe | Brugsanvisninger og produkthjælp | Käyttöohjeet ja tuotetuki

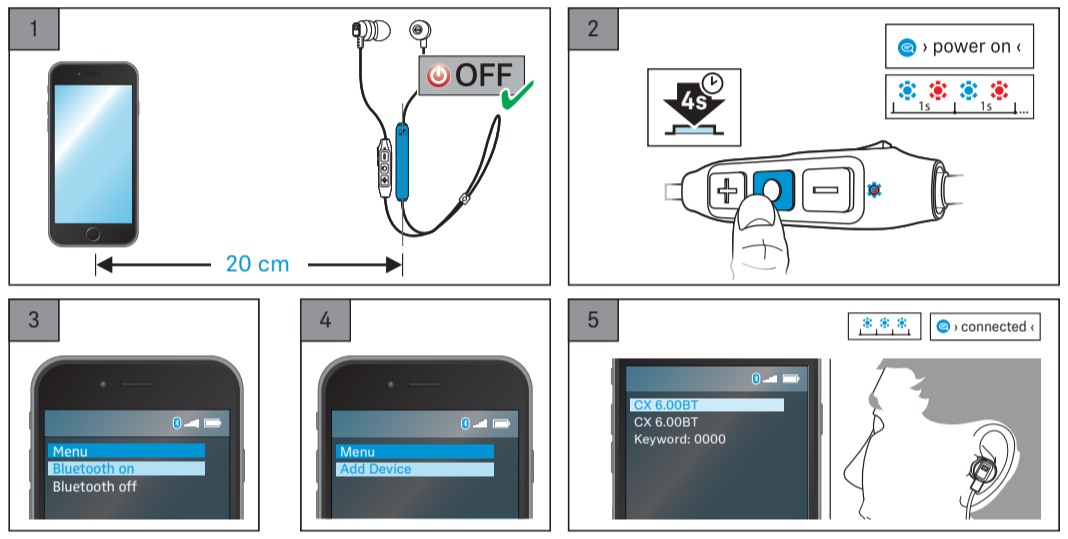
[www.sennheiser.com](http://www.sennheiser.com)  
[www.sennheiser.com/download](http://www.sennheiser.com/download)

## Sennheiser electronic GmbH & Co. KG

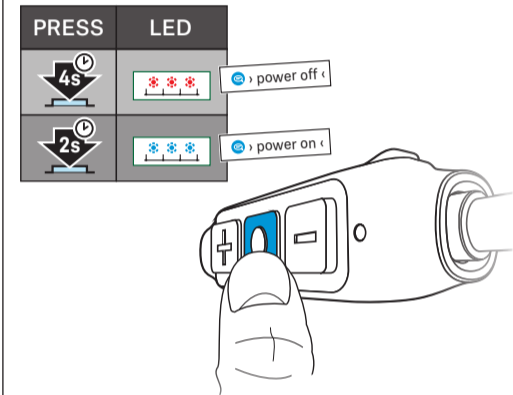
Am Labor 1, 30900 Wedemark, Germany  
[www.sennheiser.com](http://www.sennheiser.com)

Printed in China, Publ. 07/17, 577407/A01

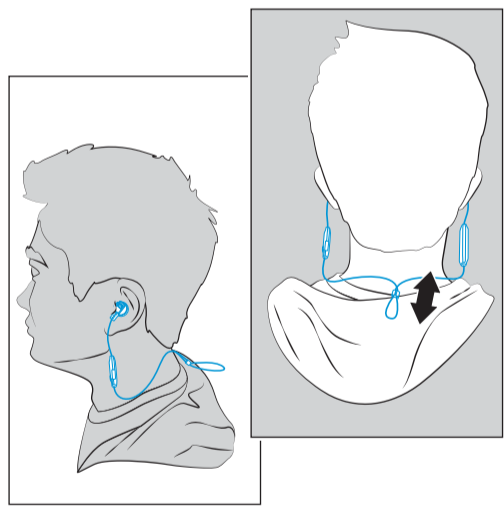
**Pairing and connecting to a Bluetooth device** | Mit einem Bluetooth-Gerät paaren und verbinden | Appairage et connexion à un appareil Bluetooth | Sincronizar y conectar con un dispositivo Bluetooth | Pairing e connessione a un dispositivo Bluetooth | Met een Bluetooth-toestel pairen en verbinden | Emparelhar e ligar a um dispositivo Bluetooth | Parowanie i łączenie z urządzeniem Bluetooth | Parring og tilslutning til en Bluetooth-enhed | Laiteparin ja yhdistäminen muodostaminen Bluetooth-laitteen kanssa



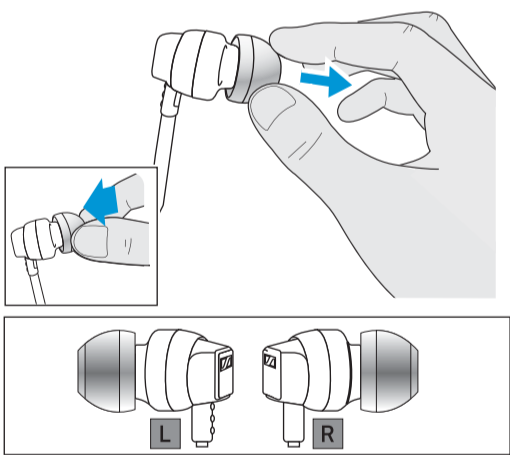
**Switching the headphones on/off** | Kopfhörer ein-/ausschalten | Activation/Désactivation du casque | Encender/apagar los auriculares | Accensione/spengimento delle cuffie | De hoofdtelefoon in-/uitschakelen | Ligar/desligar os auscultadores | Włączanie / wyłączenie słuchawek | Sådan tændes og slukkes hovedtelefonerne | Kuulokkeiden kytkeminen päälle ja pois päältä



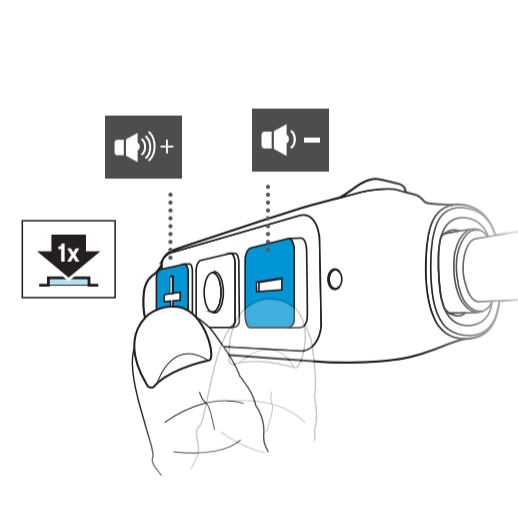
**Wearing the earphones** | Kopfhörer aufsetzen | Port du casque | Llevar los auriculares | Utilizar os auriculares | De hoofdtelefoon dragen | Indossare le cuffie | Sådan bæres hovedtelefonerne | Sätt på hörlurarna | Kuulokkeiden käyttö



**Replacing ear adaptors** | Ohradapter austauschen | Remplacement des coussinets d'oreille | Sustitución de los adaptadores para las orejas | Substituir os adaptadores de ouvido | De oordapters vervangen | Sostituzione dei gommini | Udskiftning af øreadaptere | Byte av öronkuddar | Korva-adapterien vaihto



**Adjusting the volume** | Lautstärke einstellen | Régler le volume | Ajustar el volumen | Ajustar o volume | Volume instellen | Impostazione del volume | Justering af lydstyrke | Justera volymen | Äänvoimakkuuden säätäminen



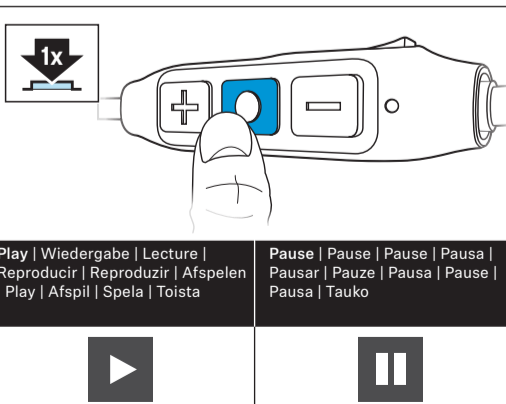
## CapTune

YOUR MUSIC. YOUR WAY.

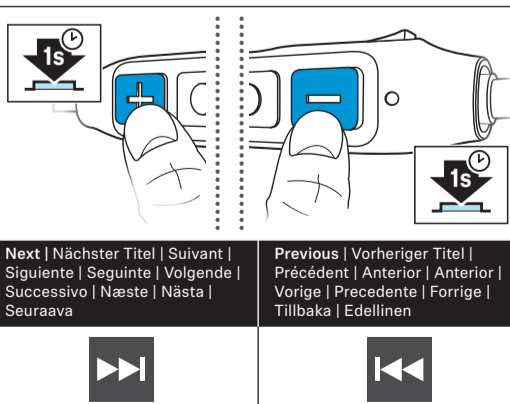


App Store is a service mark of Apple Inc. Android and Google play are registered trademarks of Google Inc. The Bluetooth® word mark and logos are registered trademarks owned by Bluetooth SIG, Inc. and any use of such marks by Sennheiser electronic GmbH & Co. KG is under license. The N-Mark is a trademark or registered trademark of NFC Forum, Inc. in the United States and in other countries. Other company and product names mentioned herein are trademarks of their respective owners.

**Music functions\*** | Musikfunktionen\* | Fonctions musicales\* | Funciones de música\* | Funzioni musica\* | Muziekfuncties\* | Funções de música\* | Funkcje odtwarzania muzyki\* | Musikfunktioner\* | Musiikkitoiminnot\*



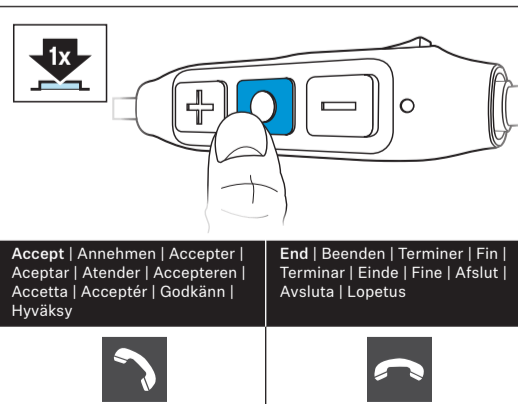
Play | Wiedergabe | Lecture | Reproducir | Reproduzir | Afspele | Play | Afspil | Spela | Toista | Pause | Pause | Pause | Pausa | Pausar | Pausar | Pausa | Pausa | Pausa | Pausa | Tauko



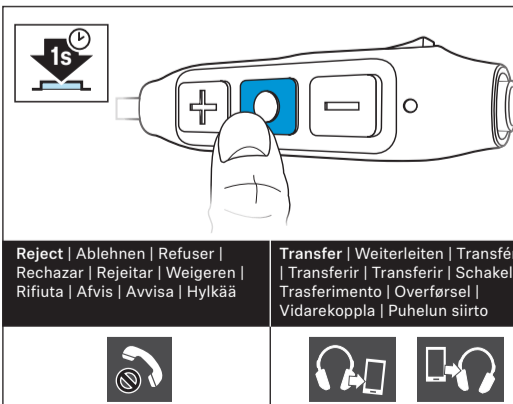
Next | Nächster Titel | Suivant | Siguiente | Seguinte | Volgende | Successivo | Næste | Nästa | Seuraava | Previous | Vorheriger Titel | Précédent | Anterior | Anterior | Vorige | Precedente | Forrige | Tillbaka | Edellinen



**Call functions\*** | Anruffunktionen\* | Fonctions d'appel\* | Funciones de llamada\* | Funzioni chiamate\* | Telefoonfuncties\* | Funções de chamadas\* | Funkcje połączeń telefonicznych\* | Opkaldsfunktioner\* | Puhelutoiminnot\*



Accept | Annehmen | Accepter | Acceptar | Atender | Accepteren | Accetta | Acceptér | Godkänn | Hyväksy | End | Beenden | Terminer | Fin | Terminar | Einde | Fine | Afslut | Avsluta | Lopetus



Reject | Ablehnen | Refuser | Rechazar | Rejeitar | Weigern | Rifiuta | Ärvis | Avvisa | Hylkää | Transfer | Weiterleiten | Transféer | Transferir | Transferir | Schakelt | Trasferimento | Overførsel | Vidarekoppla | Puhelun siirto

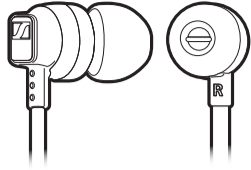


\*Refer to the user manual for the complete functions list. | Die vollständige Liste der Funktionen finden Sie in der Bedienungsanleitung. | Reportez-vous au manuel utilisateur pour obtenir la liste complète des fonctions. | Consulte el manual del usuario para la lista completa de funciones. | Per l'elenco completo delle funzioni, consultare il manuale utente. | Raadpleeg de gebruiksaanwijzing voor de complete lijst met functies. | Consulte o manual do utilizador para obter a lista completa de funções. | Komplettna lista funkcji – patrz instrukcja obsługi. | Se brugervejledningene for en liste over alle funktioner. | Täydellinen toimintojen luettelo sisältyy käyttöohjeeseen.

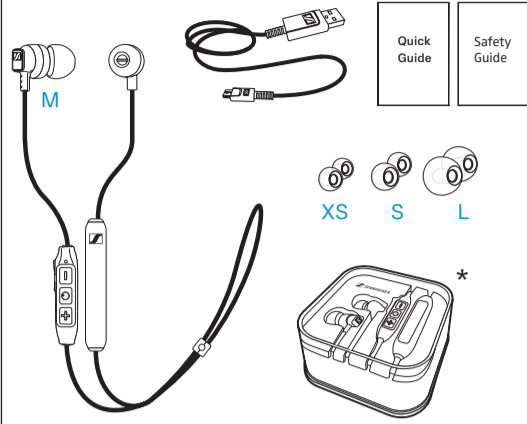


# CX 6.00BT

**Quick Guide**  
 Σύντομος οδηγός  
 Skrócona instrukcja  
 Hızlı Kılavuz  
 Краткая инструкция  
 クイックガイド  
 快速入门说明书  
 快速指南  
 빠른 안내서  
 Panduan ringkas

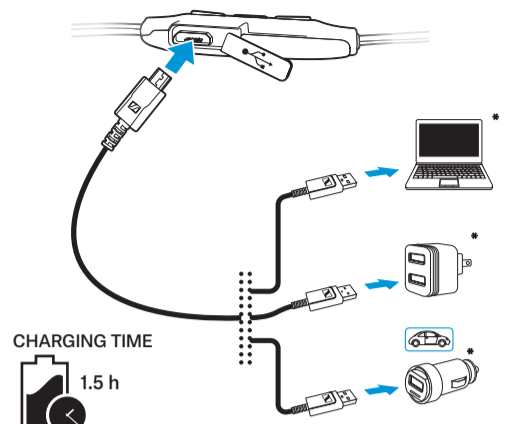


**Package includes** | Περιεχόμενα πακέτου |  
 Zestaw obejmuje | Ambalaj içeriği |  
 Комплектация | パッケージに同梱されている品目 |  
 套装包括 | 包裝內含 | 포장 내용물 | Isi kemasan



\* shown with case.

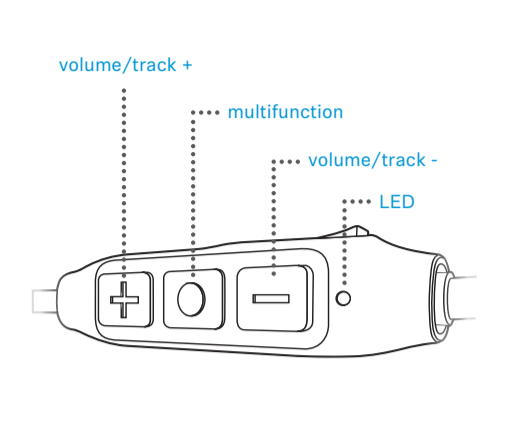
**Charging the headphones** | Φόρτιση των ακουστικών | Ładowanie słuchawek | Kulaklık setini şarj etme | Зарядка аккумуляторов наушников | ヘッドフォンを充電する | 给耳机充电 | 为耳机充电 | 헤드폰 충전하기 | Mengisi baterai headphone



CHARGING TIME  
1.5 h

\* not included.

**Control buttons** | Κουμπιά ελέγχου | Przyciski sterowania | Kontrol düğmeleri | Кнопки управления | コントロールボタン | 控制鈕 | 控制鈕 | 제어 버튼 | Tombol kontrol



## SENNHEISER

**Instruction manuals and product support** |  
 Εγχειρίδια οδηγιών και υποστήριξη προϊόντος |  
 Instrukcje obsługi i wsparcie produktowe |



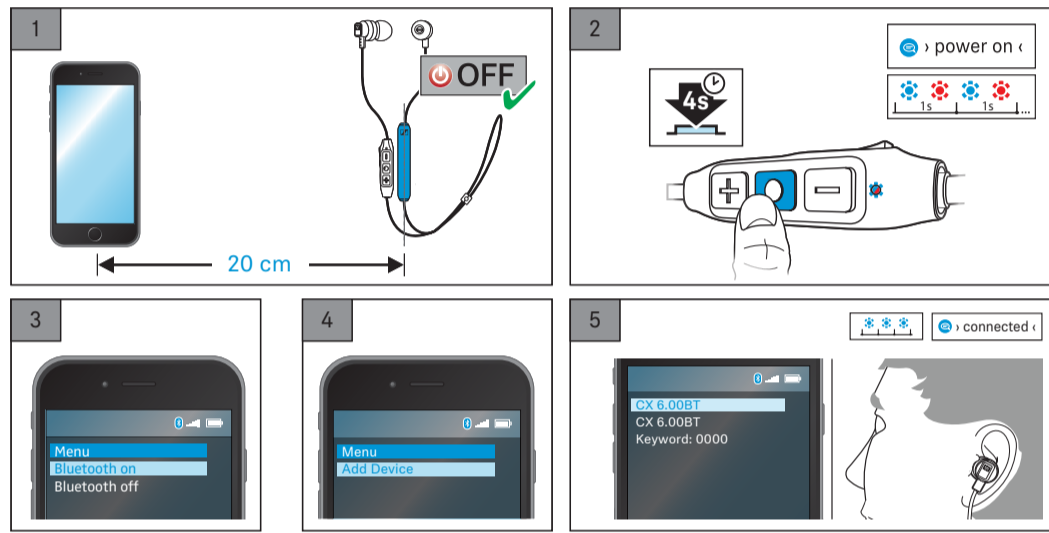
Kullanma kılavuzları ve ürün desteği  
 | Инструкция по эксплуатации и  
 техническая поддержка | 取扱説明書  
 と製品のサポート | 操作手册和产品支持  
 | 使用説明書和产品支援 | 사용  
 설명서 및 제품 지원 | Manual  
 petunjuk, dan dukungan produk

[www.sennheiser.com](http://www.sennheiser.com)  
[www.sennheiser.com/download](http://www.sennheiser.com/download)

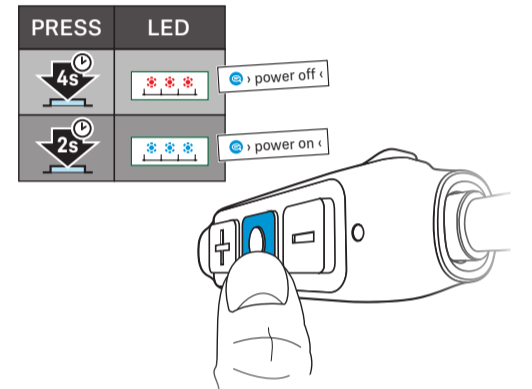
**Sennheiser electronic GmbH & Co. KG**  
 Am Labor 1, 30900 Wedemark, Germany  
[www.sennheiser.com](http://www.sennheiser.com)

Printed in China, Publ. 07/17, 577407/A01

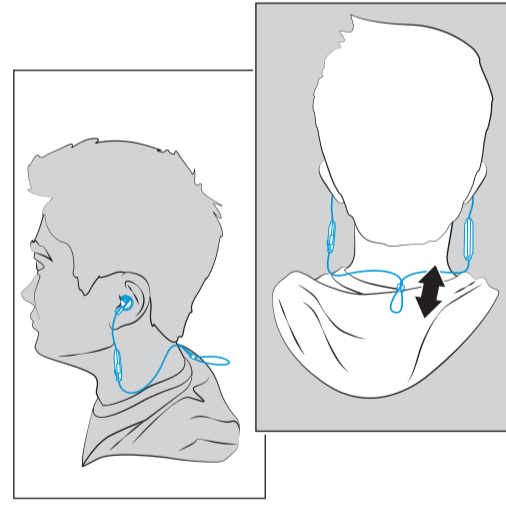
**Pairing and connecting to a Bluetooth device** | Ζεύξη και σύνδεση σε συσκευή Bluetooth | Parowanie i łączenie z urządzeniem Bluetooth | Bluetooth cihazına eşleşme ve bağlanma | Согласование и подключение к устройству Bluetooth | Bluetooth 機器とのペアリングと接続 | 与一个蓝牙设备配对并连接 | 配對和連接到藍牙設備 | 페어링 및 블루투스 장치에 연결 | Mempasangkan dan menyambungkan ke perangkat Bluetooth



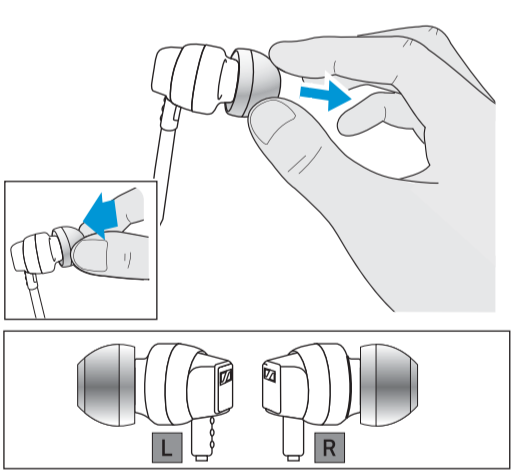
**Switching the headphones on/off** |  
 Ενεργοποίηση/απενεργοποίηση των ακουστικών |  
 Włączanie / wyłączenie słuchawek | Kulaklıkların açma/kapatma | Включение/ выключение наушников | ヘッドホンのオン/オフの切り替え |  
 打开/关闭耳机电源 | 開/關頭戴式耳機 | 헤드폰 켜기/끄기 전환 | Menyalakan/mematikan headphone



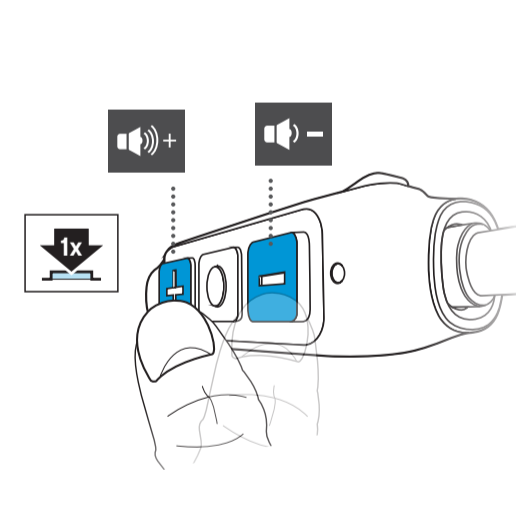
**Wearing the earphones** | Εφαρμογή των ακουστικών | Noszenie słuchawek | Kulaklık setinin takılması | Ношение наушников | ヘッドフォンの着用 | 佩戴耳机 | 佩戴耳機 | 헤드폰 착용 | Memakai headphone



**Replacing ear adaptors** | Αντικατάσταση προσαρμογέων αυτιών | Wymiana wkładek adaptacyjnych | Kulak adaptörlerinin değiştirilmesi | Замена насадок | イヤーアダプターの取り換え | Замена耳机适配器 | 更換耳機轉接器 | 이어 어댑터 교체 | Mengganti adaptor telinga



**Adjusting the volume** | Ρύθμιση της έντασης | Regulacja głośności | es şiddetinin ayarlanması | Регулировка громкости звука | 音量を設定する | 调节音量 | 調整音量 | 볼륨 조절하기 | Mengatur Volume Suara

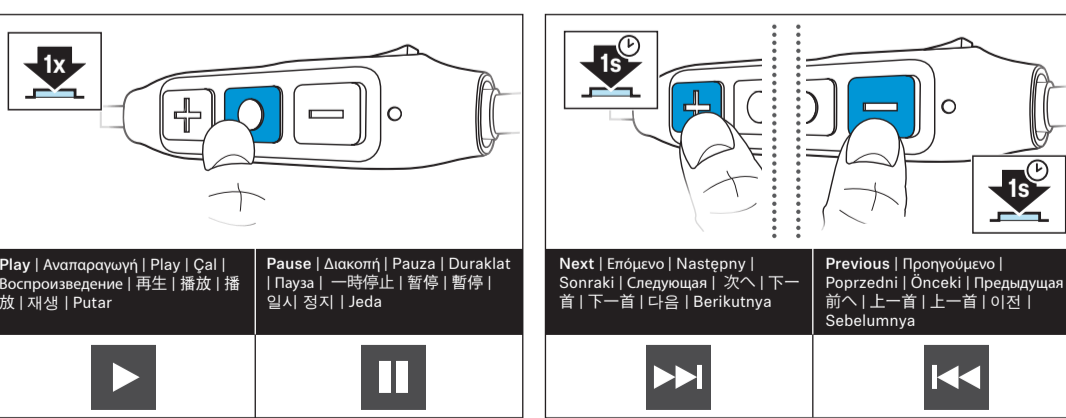


**CapTune**  
 YOUR MUSIC. YOUR WAY.

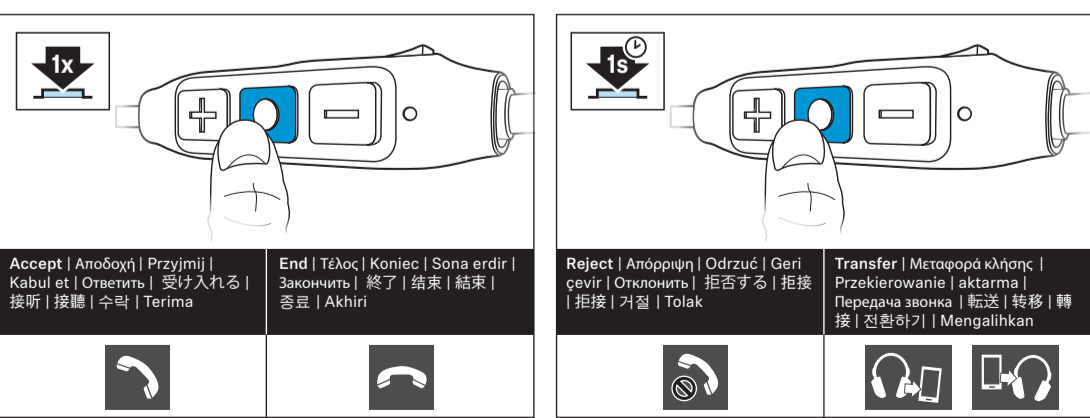
Download on the **App Store** | **Google play**

App Store is a service mark of Apple Inc. Android and Google play are registered trademarks of Google Inc. The Bluetooth® word mark and logos are registered trademarks owned by Bluetooth SIG, Inc. and any use of such marks by Sennheiser electronic GmbH & Co. KG is under license. The N-Mark is a trademark or registered trademark of NFC Forum, Inc. in the United States and in other countries. Other company and product names mentioned herein are trademarks of their respective owners.

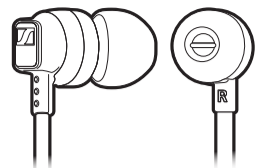
**Music functions\*** | Λειτουργίες μουσικής\* | Funkcje odtwarzania muzyki\* | Müzik işlevleri\* | Функции прослушивания музыки\* | ミュージック機能\* | 音乐功能\* | 音樂功能\* | 음악 기능\* | Fungsi musik\*



**Call functions\*** | Λειτουργίες κλήσης\* | Funkcje połączeń telefonicznych\* | Çağrı işlevleri\* | Функции телефона\* | 通話機能\* | 电话功能\* | 通話功能\* | 통화 기능\* | Fungsi panggilan\*



\*Refer to the user manual for the complete functions list. | Για την πλήρη λίστα λειτουργιών ανατρέξτε στο εγχειρίδιο χρήστη. | Kompletna lista funkcji – patrz instrukcja obsługi. | İşlevlerin tam listesi için kullanma kılavuzuna başvurun. | Подробнее смотрите инструкцию по эксплуатации. | 完全な機能のリストについては、ユーザーマニュアルを参照してください。 | 参阅用户手册查看完整的功能列表。 | 參考用戶手冊查看完整的功能列表。 | 전체 기능 목록은 사용자 설명서를 참조하십시오. | Merujuk kepada manual pengguna untuk daftar fungsi lengkap.

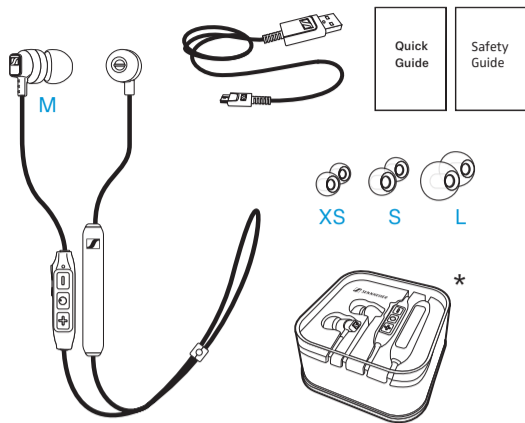


## CX 6.00BT

Kiirjuhised  
Ísã pamãciba  
Trumpasis vadovas  
Stručná příručka  
Rýchly sprievodca  
Gyors ismertetõ  
Ghid rapid  
Бърз наръчник  
Hitri vodič  
Kratki vodič

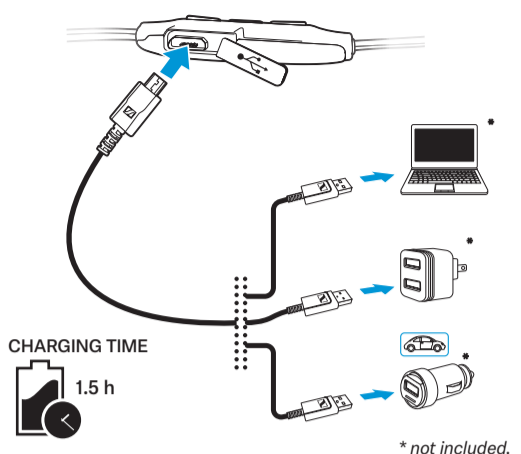
## SENNHEISER

Pakendi sisu | Iepakojuuma saturs | Pakuotės turinys | Balení obsahuje | Balenie obsahuje | A csomag tartalma | Conținutul pachetului | Съдържание на опаковката | Vsebina paketa | Paket sadrži



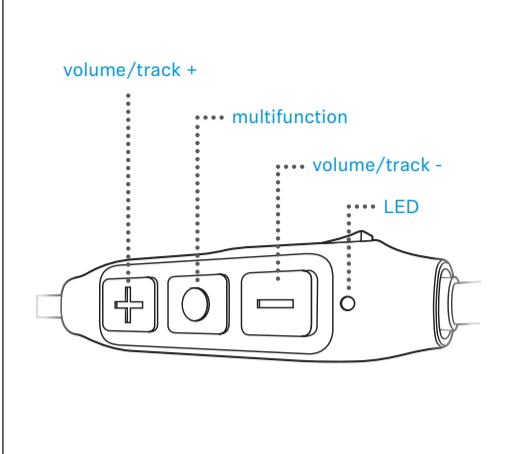
\* shown with case.

Kõrvklappide laadimine | Austiņu uzlāde | Ausinių krovimas | Nabíjení sluchátek | Nabíjanie sluchadiel | A fejhallgató töltése | Încărcarea căștilor audio | Заряджане на слушалките | Polnjenje slušalk | Punjenje slušalica



\* not included.

Juhtnupud | Vadības pogas | Valdymo mygtukai | Ovládací tlačítka | Ovládacie tlačidlá | Vezérlógombok | Butoane de comandă | Контролни бутони | Krmilni gumbi | Kontrolni gumbi



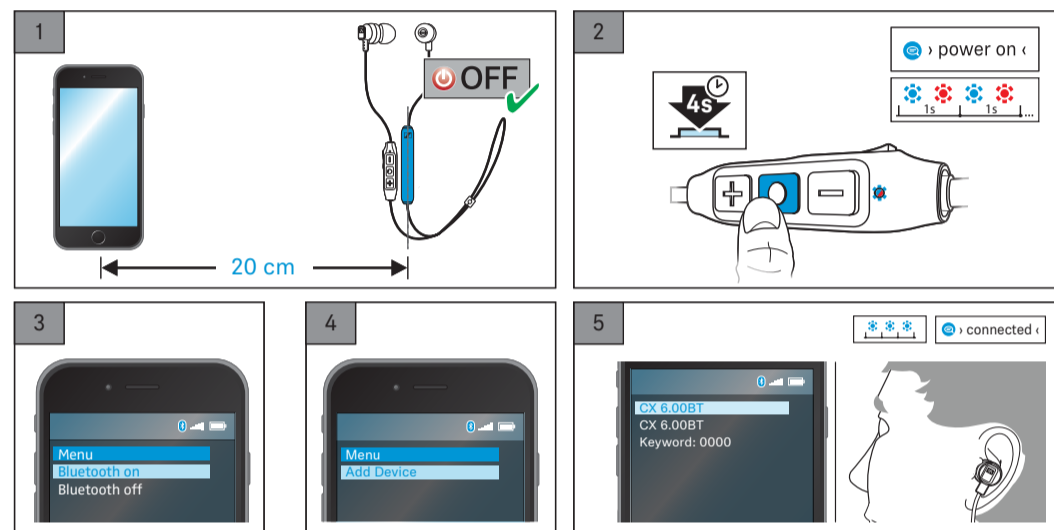
[www.sennheiser.com](http://www.sennheiser.com)  
[www.sennheiser.com/download](http://www.sennheiser.com/download)

## Sennheiser electronic GmbH & Co. KG

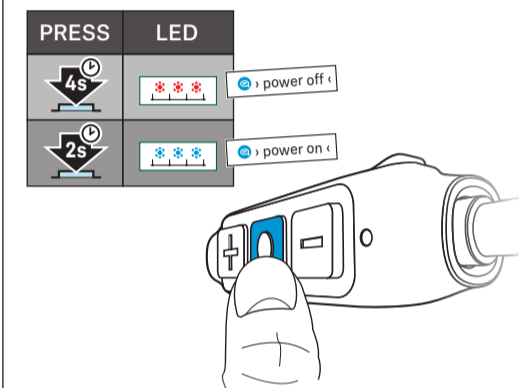
Am Labor 1, 30900 Wedemark, Germany  
[www.sennheiser.com](http://www.sennheiser.com)

Printed in China, Publ. 07/17, 577407/A01

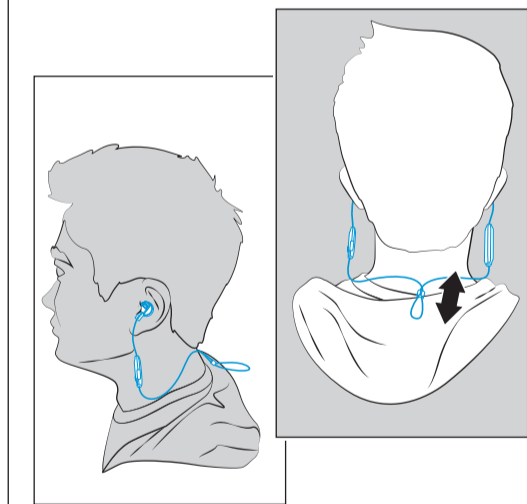
Kokkuühendamise ja Bluetooth-ühenduse loomine teise seadmega | Pieslēgšana un pievienošana Bluetooth ierīcei | Siejimas ir prijungimas prie „Bluetooth“ ieranginio | Párování a připojení k přístroji Bluetooth | Spárovanie a pripojenie k Bluetooth zariadeniu | În perecherea și conectarea la un dispozitiv Bluetooth | Сдвояване и свързване към Bluetooth устройство | Seznanjanje in vzpostavitev povezave z napravo Bluetooth



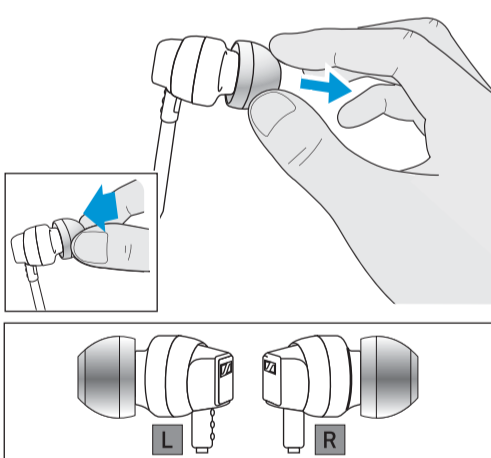
Kõrvklappide sisse/välja lülitamine | Austi u ieslēgšana/izslēgšana | Ausinių įjungimas ir išjungimas | Zapínání a vypínání sluchátek | Zapínanie/vypínanie sluchadiel | A fejhallgató be-/kikapcsolása | Pornirea și oprirea căștilor audio (on/off) | Включване/изключване на слушалките | Vklop/izklop slušalk



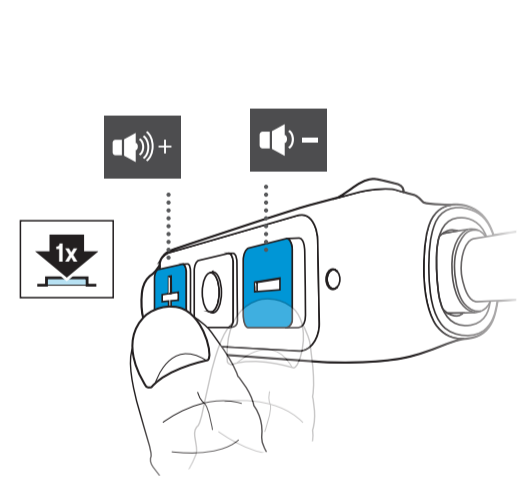
Kõrvklappide kandmine | Austiņu nēsāšana | Ausinių nešiojimas | Nošení sluchátek | Nosenie sluchadiel | A fejhallgató viselése | Cum se poartă căștile audio | Носене на слушалките | Nošenje slušalk | Nošenje slušalica



Kõrvasiirdmike asendamine | Ausu adapteru nomaiņa | Ausų adapterių keitimas | Výměna ušních adaptérů | Výmena ušných adaptérov | Füladapterek cseréje | Înlocuirea adaptoarelor pentru urechi | Смяна на адаптери за уши | Zamenjava ušesnih adapterjev | Zamjena adaptera za uši



Helitugevuse reguleerimine | Skaļuma regulēšana | Garsumo reguliavimas | Úprava hlasitosti | Nastavenie hlasitosti | Hangerő beállítása | Reglarea volumului | Регулиране силата на звука | Nastavitev glasnosti | Podešavanje glasnoće



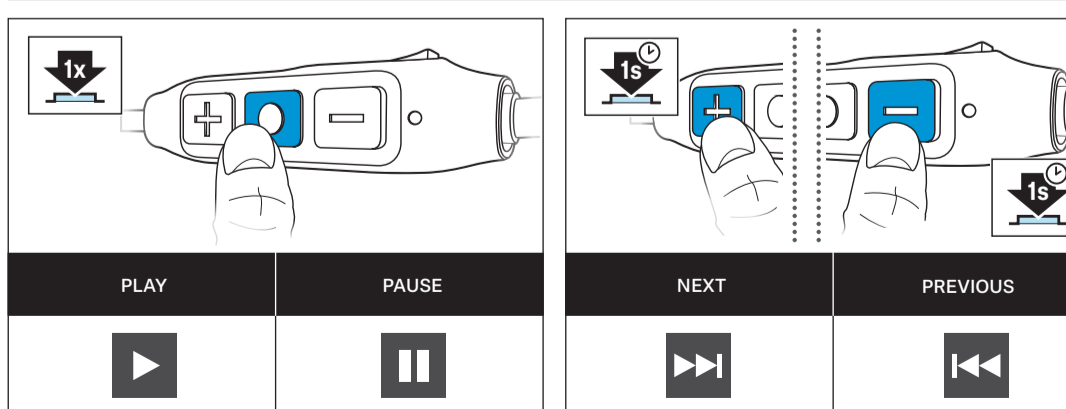
## CapTune

YOUR MUSIC. YOUR WAY.

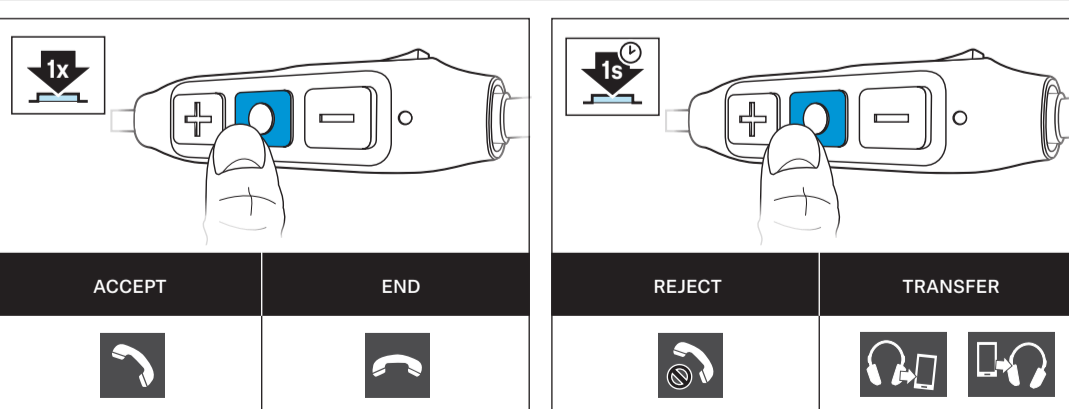


App Store is a service mark of Apple Inc. Android and Google play are registered trademarks of Google Inc. The Bluetooth® word mark and logos are registered trademarks owned by Bluetooth SIG, Inc. and any use of such marks by Sennheiser electronic GmbH & Co. KG is under license. The N-Mark is a trademark or registered trademark of NFC Forum, Inc. in the United States and in other countries. Other company and product names mentioned herein are trademarks of their respective owners.

Muusikafunktsioonid\* | Mūzikas funkcijas\* | Muzikos funkcijos\* | Hudební funkce\* | Hudobné funkcie\* | Zenei funkciók\* | Funcții pentru muzică\* | Музикални функции\* | Funkcije za glasbo\* | Funkcije za glazbu\*



Kõne funktsioonid\* | Zvana funkcijas\* | Skambučių funkcijos\* | Funkce volání\* | Funcție pre hovory\* | Hívásfunkciók\* | Funcții de apelare\* | Функции за обаждания\* | Funkcije za klicanje\* | Funkcije poziva\*



\*Kõigi funktsioonide loetelu on kasutusjuhistes. | \* Pilnu funkciju sarakstu skatiet lietotāja instrukcijā. | \*Visā funkciju sarakstā galite rasti naudotojo vadove. | \*Úplný seznam funkcí naleznete v uživatelské příručce. | \*Úplný zoznam funkcií nájdete v návode na použitie. | \*A teljes funkciólista a felhasználói kézikönyvben található. | \*Consultați acest manual pentru lista completă de funcții. | \*Направете справка в наръчника на потребителя за пълния списък с функции. | \* Za popoln seznam funkcij glejte navodila za uporabo. | \*Kompletan popis funkcija možete pronaći u uputama za uporabu.