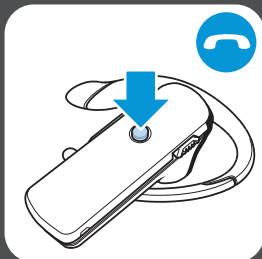


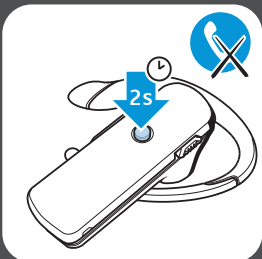
### Accepting calls



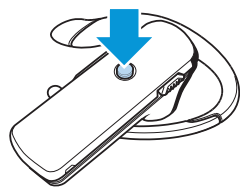
### Ending calls








### Reject calls






### Call control features



-  Redial (2 taps)
-  Voice dial  
(press for 2 seconds until you hear a beep, then release the button)
-  Transfer a call from phone to headset (1 tap)  
Transfer a call from headset to phone (press for 2 seconds)
-  Hold/unhold a call (2 taps)
-  Reconnect lost connection (1 tap)

---

-  Mute on  
(press Volume down button for 2 seconds)
-  Mute off  
(press Volume down button for 2 seconds)
-  Remaining talk time  
(press Volume up button for 2 seconds)



Sennheiser Communications A/S  
 Industriparken 27, DK-2750 Ballerup, Denmark  
[www.senncom.com](http://www.senncom.com)

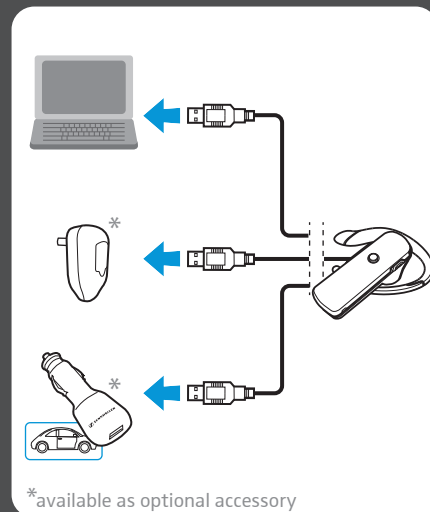
Printed in China, Publ. 08/13, A01



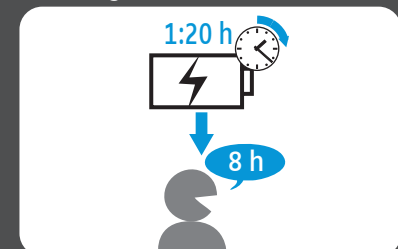
[www.senncom.com](http://www.senncom.com)

## Quick Guide | EZX 70

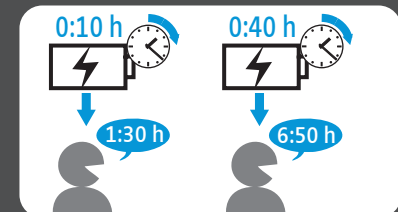
### Charging



### Full charge



### Fast charging

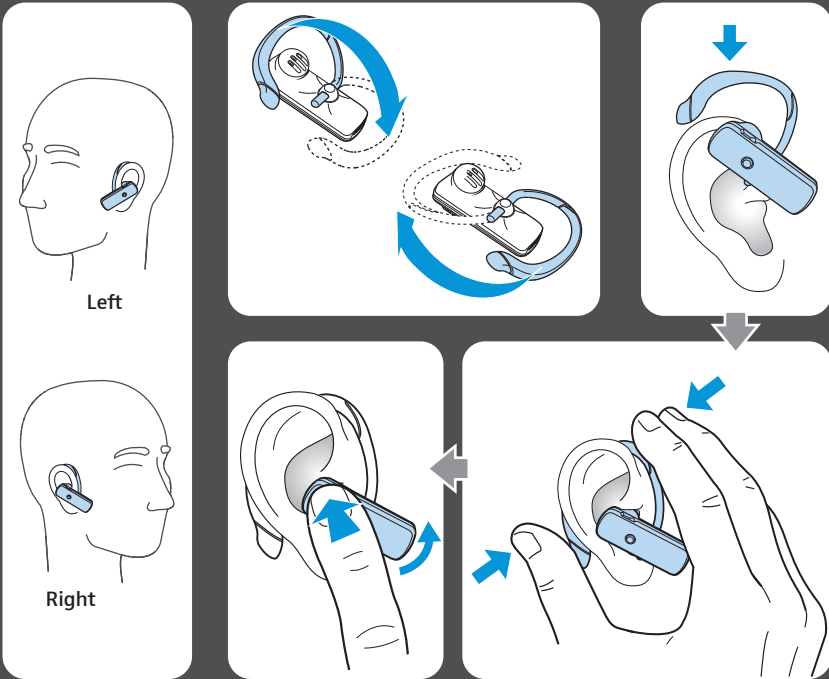


### Power on/off

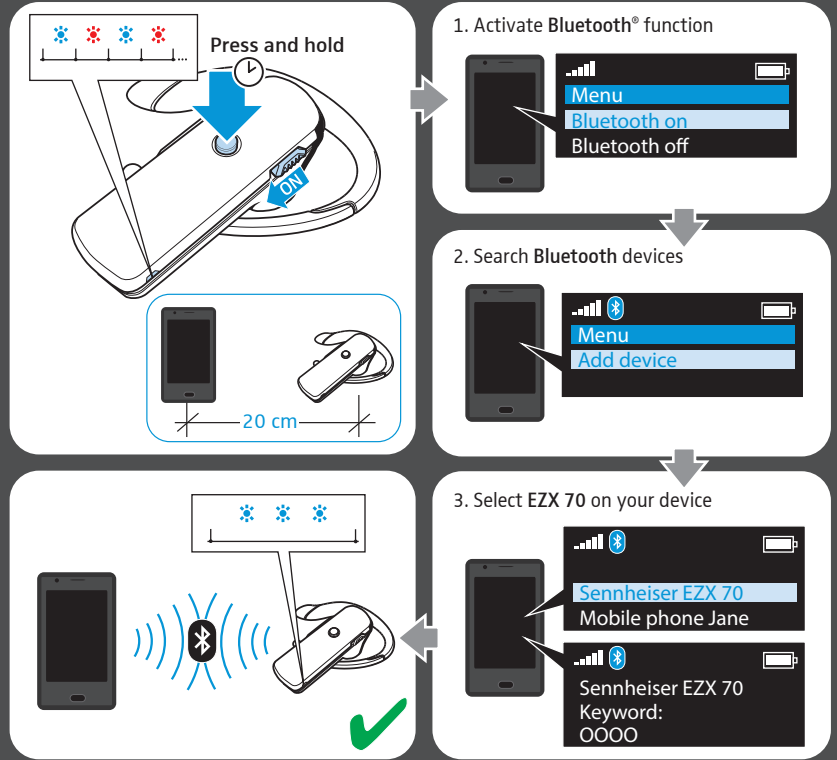
**ON**

**OFF**

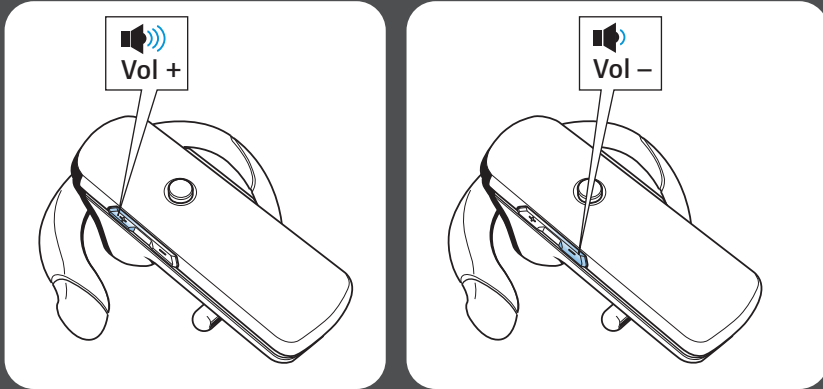
### How to wear/adjust the earhook



### Pairing



### Adjusting the volume



### How to check remaining battery life

