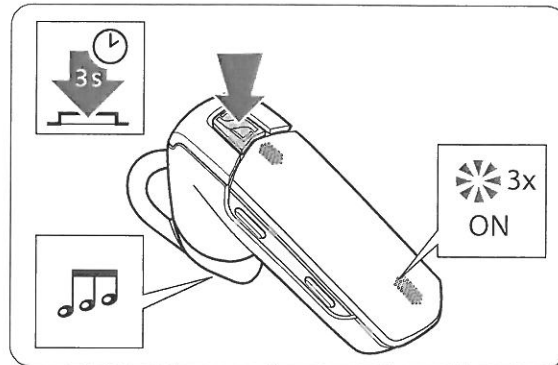


## Switching the VMX 200 on/off

### Switching the headset on

- ▶ Press and hold the multi-function button until the LED flashes blue 3 times. You hear an ascending sequence of beeps in the headset.



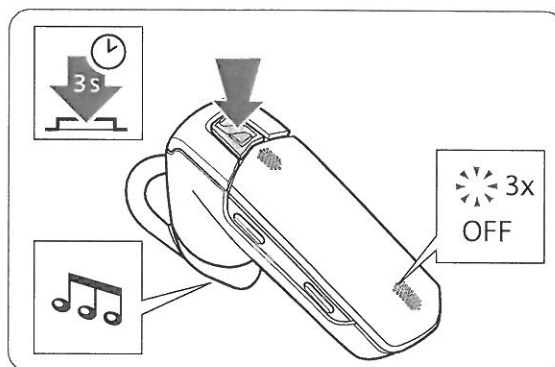
The LED then indicates the current operating mode.

LED flashes	Meaning
	Searching mode: The headset automatically tries to connect to the two last connected <b>Bluetooth</b> devices.
	Pairing mode: The headset establishes a connection to a <b>Bluetooth</b> device.
	Incoming call: The mobile phone transfers the call to the headset.
	Active call: The headset is just being used for an active call.

### Switching the headset off

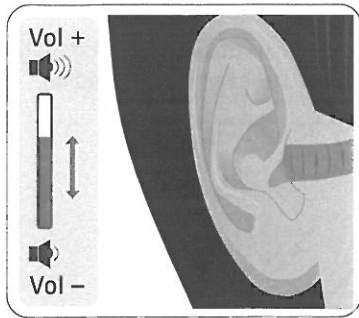
If the headset has not been used for more than 1 hour, it automatically switches off to conserve battery power.

- ▶ Press the multi-function button for 3 seconds. You hear a descending sequence of beeps in the headset and the LED flashes red 3 times. The headset switches off and the call is transferred to the **Bluetooth** device.



**i** Connection profiles and volume settings are saved automatically when the headset is switched off.

## Changing the speaker volume



### WARNING

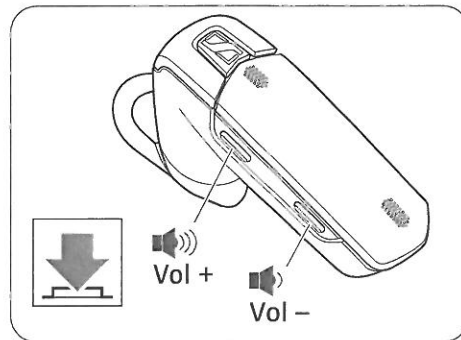
#### Hearing damage due to high volumes!

Listening at high volume levels for long periods can lead to permanent hearing defects.

- ▶ Set the volume to a low level before putting on the headset.
- ▶ Do not continuously expose yourself to high volumes.

- ▶ Press the
  - volume up button to increase the volume.
  - volume down button to reduce the volume.

When the minimum or maximum volume is reached, you hear a beep in the headset.



## Making calls using the VMX 200



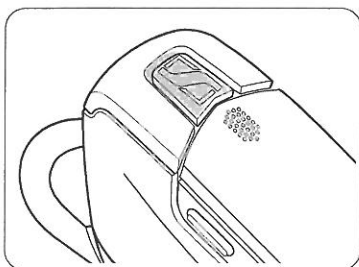
When your VMX 200 is connected to a mobile phone and you receive a call, you hear a ring tone in the headset and the LED flashes blue 4 times per second.

### Managing one call

- ▶ Dial the number on your mobile phone.

If your mobile phone automatically transfers the call to the headset, you hear a beep in the headset. If your mobile phone does not automatically transfer the call to the headset, you have to press a button on your mobile phone to transfer the call (see the instruction manual of your mobile phone).

- ▶ Press the multi-function button:



Duration	Function	Beep(s)
	Accepts a call	-
	Rejects a call	
	Ends a call	
	Transfers an active call from the mobile phone to the headset	

### Managing two calls

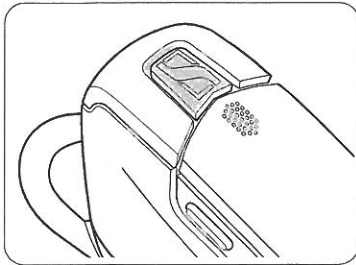
You can manage two calls:

- from either two **Bluetooth** devices or
- from one **Bluetooth** device.

If you want to manage two calls from one **Bluetooth** device, disconnect the second **Bluetooth** device.

If you receive a call during an active call:

▶ Press the multi-function button:



Duration	Active call	2nd incoming call	Function
			Accepts the incoming call and ends the active call
			Rejects the incoming call and continues the active call
			Accepts the incoming call and puts an active call on hold (toggling – phone dependent)



If you put an active call on hold (toggling):

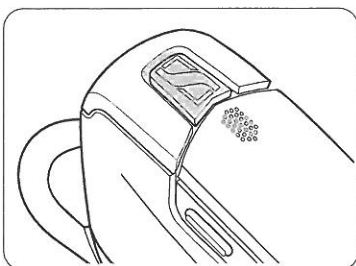
▶ Press the multi-function button again:

Duration	Active call	2nd call put on hold	Function
			Ends the active call and makes the call on hold active (phone dependent)
			Toggles between two calls (phone dependent)
			Establishes a conference call (for 2 calls on one <b>Bluetooth</b> device only)

### Redialing

The redialing function must be supported by your mobile phone or **Bluetooth** device (with HF profile respectively) and be activated.

▶ Press the multi-function button:

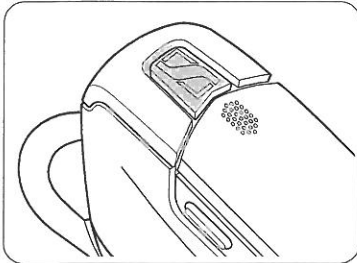


Duration	Function	Beep(s)
	Redials the last number	
	Stops redialing	

### Voice dialing

The voice dialing function must be supported by your mobile phone (with HF profile) and be activated. Follow the instructions in the instruction manual of your mobile phone.

- ▶ Press the multi-function button on the headset to activate the voice dialing function.



Duration	Function	Beep(s)
↓	Voice dialing	–
↓	Stops voice dialing	–

- ▶ Say the name of the person you want to call.  
The mobile phone automatically dials the corresponding number.

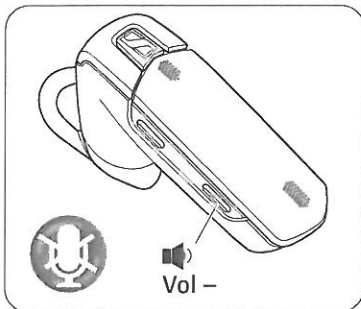
### Muting the headset's microphone

To mute the headset's microphone:

- ▶ Press the volume down button for 1 second.

To unmute the headset's microphone:

- ▶ Briefly press any button.



## Cleaning and maintaining the VMX 200

---

### CAUTION

**Liquids can damage the electronics of the product!**

Liquids entering the housing of the device can cause a short circuit and damage the electronics.

- ▶ Keep all liquids far away from the product.
  - ▶ Do not use any cleansing agents or solvents.
- 

### Cleaning the headset

- ▶ Only use a dry cloth to clean the product.

### Storing the headset

If you do not use the headset for extended periods of time:

- ▶ Charge the built-in rechargeable battery every 6 months for about 1 hour.
- ▶ Store the headset in a clean and dry environment.

## If a problem occurs ...

Problem	Possible cause	Possible solution	Page
Headset cannot be switched on	The rechargeable battery is flat.	Recharge the rechargeable battery.	9
No audio signal	The headset is not paired with the mobile phone.	Check if the headset is paired. If necessary, pair the headset with the mobile phone again.	14
	The volume is adjusted too low.	Increase the volume.	15
	The headset is switched off.	Switch the headset on.	14
Headset cannot be paired	The pairing does not work.	Check if the your <b>Bluetooth</b> device supports the HF or HS profile.	–
	The mobile phone is switched off.	Switch the mobile phone on.	14
Headset does not react to any button press	The operation of the headset is faulty.	Reset the headset to the factory default settings.	20

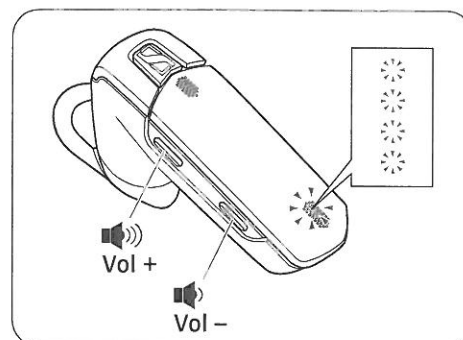
If a problem occurs that is not listed in the above table or if the problem cannot be solved with the proposed solutions, please contact your local Sennheiser partner for assistance.

To find a Sennheiser partner in your country, search at [www.senncom.com](http://www.senncom.com).

### Restoring factory default settings (Reset)

You can restore the following settings to their factory default settings:

- list of paired Bluetooth devices (afterwards empty)
- ▶ Set the headset to pairing mode (see page 10). The LED flashes alternately blue and red, indicating that the headset is in pairing mode.
- ▶ Simultaneously press and hold the volume up button and the volume down button for 3 seconds.



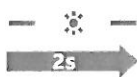
## If you are out of the Bluetooth transmission range

Calling is only possible in the **Bluetooth** transmission range of the mobile phone. The transmission range largely depends on environmental conditions such as wall thickness, wall composition etc. With a free line of sight, the transmission range of most mobile phones and **Bluetooth** devices is up to 10 meters.

If the headset leaves the **Bluetooth** transmission range of the mobile phone:

- The sound quality deteriorates before the connection finally breaks down.
- Your mobile phone displays the loss of connection.
- Please refer to the instruction manual of your mobile phone for information on whether the call is automatically transferred to the mobile phone or requires an acknowledgement to do so.

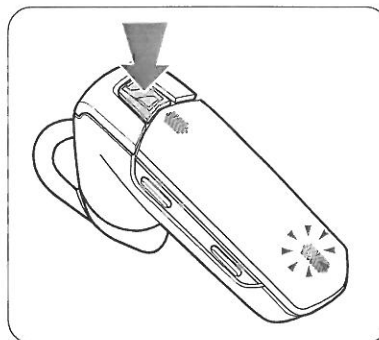
### Manually re-establishing Bluetooth connections



When the headset is disconnected from the **Bluetooth** device, the LED flashes blue once every 2 seconds, indicating that the headset is in searching mode.

- ▶ Make sure that the **Bluetooth** visibility of the **Bluetooth** device is enabled.
- ▶ Press the multi-function button to re-establish the Bluetooth connection.

Once the VMX 200 has found the **Bluetooth** device, the devices exchange device identification information. You hear a high beep in the headset and the LED flashes blue 3 times.





## Specifications

### VMX 200

Dimensions	55 x 26 x 58 mm (W x H x D)
Weight without ear hook	approx. 10 g
Standby time	up to 10 days (240 hrs)
Talk time	up to 6 hrs
Charging time	before first use: 2.5 hrs following: 2 hrs
Range	10 m
Speaker type	dynamic, neodymium magnet
Microphone type	dual omni-directional electret microphone
Audio	digital noise and echo suppression
Operating temperature range	+10°C (+50°F) to +40°C (+104°F)
Operating relative humidity	20 to 85%, non-condensing
Storage temperature range	-20°C (-4°F) to +60°C (140°F)
Storage relative humidity	10 to 95%, non-condensing

### VMX 200 power supply unit

Nominal input voltage	100 – 240 V~
Nominal input current	max. 0.2 A
Mains frequency	50–60 Hz
Nominal output voltage	5 V ---
Nominal output current	max. 150 mA
Operating temperature range	+10°C (+50°F) to +40°C (+104°F)
Operating relative humidity	20 to 85%, non-condensing
Storage temperature range	-20°C (-4°F) to +60°C (140°F)
Storage relative humidity	10 to 95%, non-condensing
Weight	approx. 75 g



Bluetooth	
Bluetooth®	version 3.0
Range	up to 10 m
Transmission frequency	2402 MHz to 2480 MHz
Profiles	HSP, HFP

## Manufacturer Declarations

### Warranty

Sennheiser Communications A/S gives a warranty of 24 months on this product. For the current warranty conditions, please visit our website at [www.senncom.com](http://www.senncom.com) or contact your Sennheiser partner.

In compliance with the following requirements

- RoHS Directive (2002/95/EC)
- WEEE Directive (2002/96/EC)






Please dispose of this product by taking it to your local collection point or recycling center for such equipment. This will help to protect the environment in which we all live.

### CE Conformity

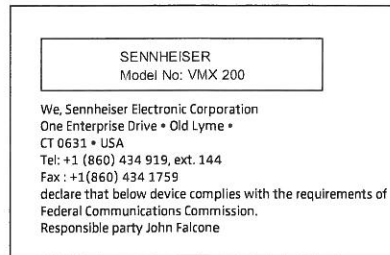
- **CE**
- R&TTE Directive (1999/5/EC)
- EMC Directive (2004/108/EC)
- Low Voltage Directive (2006/95/EC)
- EuP Directive (2005/32/EC)

The CE Declaration of Conformity is available on our website at [www.senncom.com](http://www.senncom.com).

In compliance with:

USA	FCC ID: DMOCBMSAD
Canada	IC: 2099D-VMX200
Europe	 
Australia/ New Zealand	 N340
Singapore	Complies with IDA Standards DB100582

Statements regarding FCC and Industry Canada



This device complies with Part 15 of the FCC Rules and with Industry Canada standard(s) for licence-exempt radio devices. Operation is subject to the following two conditions: (1) this device may not cause harmful interference, and (2) this device must accept any interference received, including interference that may cause undesired operation.

This equipment has been tested and found to comply with the limits for a Class B digital device, pursuant to Part 15 of the FCC Rules and RSS 210 of Industry Canada. These limits are designed to provide reasonable protection against harmful interference in a residential installation. This equipment generates, uses and can radiate radio frequency energy and, if not installed and used in accordance with the instructions, may cause harmful interference to radio communications. However, there is no guarantee that interference will not occur in a particular installation. If this equipment does cause harmful interference to radio or television reception, which can be determined by turning the equipment off and on, the user is encouraged to try to correct the interference by one or more of the following measures:

- Reorient or relocate the receiving antenna.
- Increase the separation between the equipment and receiver.
- Connect the equipment into an outlet on a circuit different from that to which the receiver is connected.
- Consult the dealer or an experienced radio/TV technician for help.

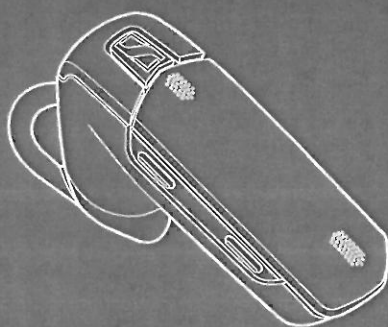
Changes or modifications made to this equipment not expressly approved by Sennheiser electronic Corp. may void the FCC authorization to operate this equipment. Before putting the equipment please observe the respective country-specific regulations!

RF Radiation Exposure Information

Since the radiated output of this device is far below the FCC radio frequency exposure limits, it is not subjected to routine RF exposure evaluation as per Section 2.1093 of the FCC rules.

Trademarks

The Bluetooth® word mark and logos are registered trademarks owned by Bluetooth SIG, Inc. and any use of such marks by Sennheiser Communications A/S is under license.



Sennheiser Communications A/S  
Langager 6, 2680 Solrød Strand, Denmark  
[www.senncom.com](http://www.senncom.com)

Publ. 04/11, A01

 **SENNHEISER**  
COMMUNICATIONS

