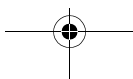
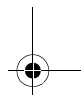
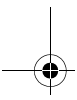
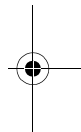
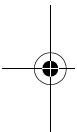


 **SENNHEISER**

# Audio BTD 300



Instruction manual  
Notice d'emploi  
Manual de instrucciones  
Manual de utilização  
Bedienungsanleitung  
Istruzioni per l'uso  
Gebruiksaanwijzing





English

Français

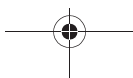
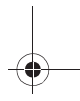
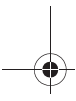
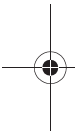
Español

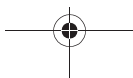
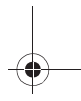
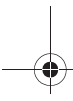
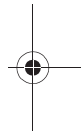
Português

Deutsch

Italiano

Nederlands





## Important safety information

- Please read this instruction manual carefully and completely before using the product.
- Make this instruction manual easily accessible to all users at all times. Always include this instruction manual when passing the product on to third parties.
- Always keep the product dry and do not expose it to extreme temperatures.

### Safety instructions for Bluetooth devices

- The radio waves of a **Bluetooth**® device can impair the operation of electronic and medical devices.
- Do not use the product in medical facilities, trains and aircraft, and close to automatic doors, automatic fire alarms or other automatically controlled devices.

- Keep this product at least 20 cm from pace-makers. Radio waves can impair the operation of pacemakers.

### Intended use

Intended use of this product includes:

- having read this instruction manual, especially the chapter “Important safety information”,
- using the product within the operating conditions and limitations described in this instruction manual.

“Improper use” means using the product other than as described in this instruction manual, or under operating conditions which differ from those described herein.

## Lithium-Polymer rechargeable batteries


The BTB 300 Audio has a built-in Lithium-Polymer rechargeable battery. If abused or misused, this rechargeable battery may leak.


**WARNING!** In extreme cases, the rechargeable battery may even present





- a heat hazard,
- a fire hazard,
- an explosion hazard,
- a smoke or gas hazard.


Please understand that Sennheiser does not accept liability for damage arising from abuse or misuse.


- 


Keep away from children.
- 


Do not heat above 70°C/158°F or throw into a fire.
- 

Do not expose to moisture.
- 

Do not mutilate or dismantle.
- 

Switch rechargeable battery-powered devices off after use.
- 

When not using rechargeable batteries for extended periods of time, charge them regularly (about every three months).
- 

Only charge rechargeable batteries at ambient temperatures between 10°C/50°F and 40°C/104°F.
- 

Dispose of the product, together with the built-in rechargeable battery, by taking it to your specialist dealer or your Sennheiser partner.



## BTD 300 Audio

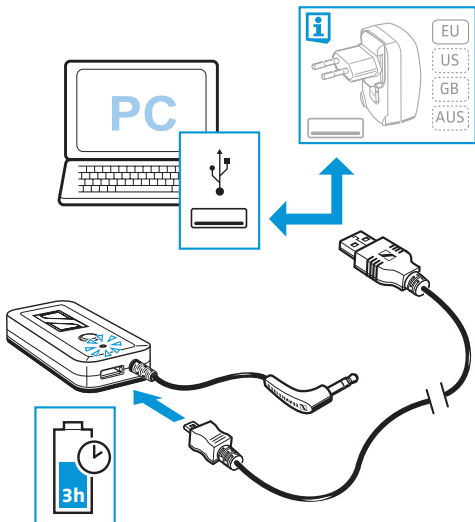
If your audio source, PC or mobile phone does not support the **Bluetooth** stereo audio profile (A2DP), you can use the BTD 300 Audio adapter. The BTD 300 Audio allows you to extend the functionality of your devices by adding support for this **Bluetooth** profile.

Bluetooth wireless technology provides an interface for wireless communication between your audio source, PC or mobile phone and other **Bluetooth** enabled devices, e.g. headphones.

## Delivery includes

- 1 BTD 300 Audio adapter
- 1 charging cable with USB plug
- 1 instruction manual

## Charging the rechargeable battery

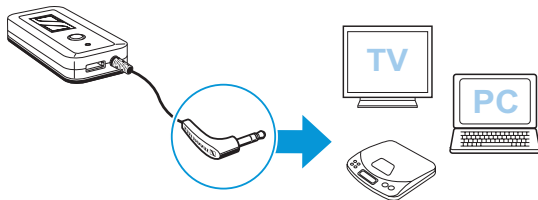


- ▶ Charge the rechargeable battery when the LED flashes red. When the rechargeable battery is fully charged, the LED goes off.



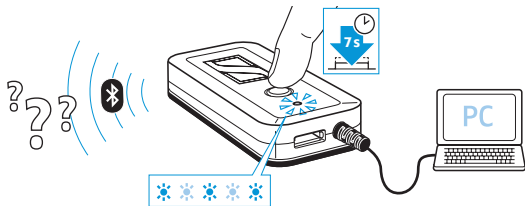
For charging the rechargeable battery, use the mains unit supplied with your PX headphones or PX headset. The mains unit is also available from your specialist dealer (Cat. No. 525776).

## Connecting the BTD 300 Audio



## Pairing the BTD 300 Audio (I)

- ▶ Make sure that your product is in pairing mode (see the instruction manual of your headphones or loudspeaker system).

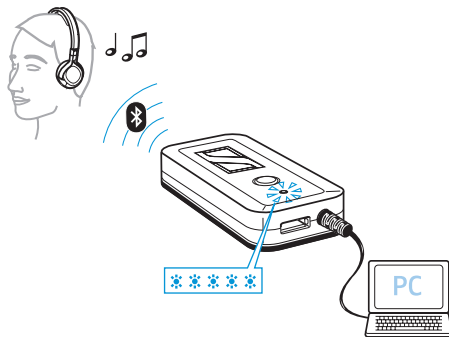


### Memory function

The BTD 300 Audio can save the connection profiles of up to 5 **Bluetooth** devices with which it has been paired. After switch-on, it automatically connects to one of these devices.

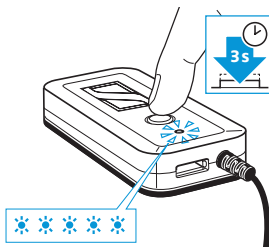
If you pair the BT300 Audio with a sixth audio source, the saved connection profile of the first **Bluetooth** device will be overwritten.

## Pairing the BT300 Audio (II)



If the BT300 Audio does not detect a **Bluetooth** device, it switches off after 5 minutes.

## Switching the BTD 300 Audio on/off



## Technical data

Input voltage	5 V $\text{---}$
Input current	max. 140 mA
Rechargeable battery	3.7 V; 340 mAh; Lithium-Polymer
Charging time	~ 3 hrs
Operating time	14 hrs
Nominal impedance	540 $\Omega$
Audio connection	3.5 mm stereo jack socket
Cable length	10 cm
Weight	20 g

### PSC 03R-050 mains unit

Nominal input voltage	110–240 V $\sim$
Nominal input current	max. 0.2 A
Nominal output voltage	5 V $\text{---}$
Nominal output current	max. 0.5 A

## Bluetooth

Bluetooth®	version 2.0 + EDR
Range	up to 10 m
Transmission frequency	2.4 GHz
Protocol	A2DP
Codecs	SBC, apt-X®

## Accessories

### Cat. No. Accessory/spare part

- 525776 PSC 03R-050 mains unit with 4 country adapters (EU/UK/US/AU)
- 531407 Micro-USB to USB cable



## Manufacturer Declarations

Sennheiser electronic GmbH & Co. KG gives a warranty of 24 months on this product. For the current warranty conditions, please visit our web site at [www.sennheiser.com](http://www.sennheiser.com) or contact your Sennheiser partner.

### Declaration of Conformity

These products comply with the basic requirements and other relevant provisions of the following directives:



- R&TTE Directive (1999/5/EC)
- Battery Directive (2006/66/EC)
- RoHS Directive (2002/95/EC)
- WEEE Directive (2002/96/EC)

The declaration is available at [www.sennheiser.com](http://www.sennheiser.com). Before putting the products into operation, please observe the respective country-specific regulations!

### In compliance with:

USA	FCC ID: DMOBTD300A	
Canada	IC: 2099A-BTD300A	
Europe	 <b>0560</b>	 

### Bluetooth

QD ID	B15373	 <b>Bluetooth</b> 
-------	--------	---

The Bluetooth® word mark and the Bluetooth® logo are registered trademarks owned by Bluetooth SIG, Inc. and any use of such marks by Sennheiser electronics GmbH & Co. KG is under license.

apt-X® is a registered trademark of Audio Processing Technology Ltd.

## Statements regarding FCC and Industry Canada

This device complies with Part 15 of the FCC Rules and with RSS-210 of Industry Canada. Operation is subject to the following two conditions: (1) this device may not cause harmful interference, and (2) this device must accept any interference received, including interference that may cause undesired operation.

This equipment has been tested and found to comply with the limits for a Class B digital device, pursuant to Part 15 of the FCC Rules. These limits are designed to provide reasonable protection against harmful interference in a residential installation. This equipment generates, uses and can radiate radio frequency energy and, if not installed and used in accordance with the instructions, may cause harmful interference to radio communications. However, there is no guarantee that interference will not occur in a particular installation. If this equipment does cause harmful interference to radio or television reception,

which can be determined by turning the equipment off and on, the user is encouraged to try to correct the interference by one or more of the following measures:

- Reorient or relocate the receiving antenna.
- Increase the separation between the equipment and receiver.
- Connect the equipment into an outlet on a circuit different from that to which the receiver is connected.
- Consult the dealer or an experienced radio/TV technician for help.

This class B digital apparatus complies with the Canadian ICES-003.

Changes or modifications made to this equipment not expressly approved by Sennheiser electronic Corp. may void the FCC authorization to operate this equipment.

**FCC Declaration of Conformity (DoC)**SENNHEISER  
Model No: BTD 300 Audio

We,

Sennheiser Electronic Corporation  
Strat. Marketing • Stefanie Reichert  
One Enterprise Drive • Old Lyme •  
CT 06371 • USA  
Tel: +1 (860) 434 9190, ext. 144  
Fax: +1 (860) 434 1759

declare the above device comply with the requirements of Federal Communications Commission.

This device complies with Part 15 of the FCC rules. Operation is subjected to the following two conditions:

- 1) This device may not cause harmful interference, and
- 2) This device must accept any interference received, including interference that may cause undesired operation.

Responsible Party: John Falcone

**RF Radiation Exposure Information**

This equipment complies with FCC radiation exposure limits set forth for an uncontrolled environment. End users must follow the specific instructions for satisfying RF exposure compliance. This transmitter must not be co-located or operating in conjunction with any other antenna or transmitter.

 **SENNHEISER**

Sennheiser electronic GmbH & Co. KG,  
Am Labor 1, 30900 Wedemark, Germany  
[www.sennheiser.com](http://www.sennheiser.com)

Printed in China  
Publ. 09/09  
532802/A02