



Measurement of RF Interference from a Transceiver  
Model CA600J Wall Dimmer Switch

For : Intermatic  
Spring Grove, IL

P.O. No. : 912859

Date Received: June 22, 2006

Date Tested : June 22, 2006

Test Personnel: Mark E. Longinotti, NARTE® Certified EMC Test  
Engineer, ATL-0154-E

Specification : FCC "Code of Federal Regulations" Title 47  
Part 15, Subpart B, for receivers and Subpart C,  
Section 15.249 for Intentional Radiators Operating  
Within the 902MHz to 928MHz band

Test Report By : *MARK E. LONGINOTTI*  
Mark E. Longinotti  
NARTE® Certified EMC Test  
Engineer, ATL-0154-E

Approved By : *Raymond J Klouda*  
Raymond J. Klouda  
Registered Professional Engineer  
of Illinois - 44894



TABLE OF CONTENTS

<u>PARAGRAPH</u>	<u>DESCRIPTION OF CONTENTS</u>	<u>PAGE NO.</u>
1.0	INTRODUCTION .....	3
1.1	Description of Test Item .....	3
1.2	Purpose .....	3
1.3	Deviations, Additions and Exclusions .....	3
1.4	Applicable Documents .....	3
1.5	Subcontractor Identification .....	3
1.6	Laboratory Conditions .....	3
2.0	TEST ITEM SETUP AND OPERATION .....	3
2.1	Power Input .....	4
2.2	Grounding .....	4
2.3	Peripheral Equipment .....	4
2.4	Interconnect Cables .....	4
2.5	Operational Mode .....	4
2.6	Test Item Modifications .....	4
3.0	TEST EQUIPMENT .....	4
3.1	Test Equipment List .....	4
3.2	Calibration Traceability .....	4
3.3	Measurement Uncertainty .....	4
4.0	REQUIREMENTS, PROCEDURES AND RESULTS .....	5
4.1	Powerline Conducted Emissions .....	5
4.1.1	Requirements .....	5
4.1.2	Procedures .....	6
4.1.3	Results .....	6
4.2	Radiated Measurements .....	6
4.2.1	Receiver .....	6
4.2.1.1	Requirements .....	6
4.2.1.2	Procedures .....	6
4.2.1.3	Results .....	7
4.2.2	Transmitters .....	8
4.2.2.1	Requirements .....	8
4.2.2.2	Procedures .....	8
4.2.2.3	Results .....	9
4.3	Occupied Bandwidth Measurements .....	9
4.3.1	Requirement .....	9
4.3.2	Procedures .....	9
4.3.3	Results .....	9
5.0	CONCLUSIONS .....	9
6.0	CERTIFICATION .....	10
7.0	ENDORSEMENT DISCLAIMER .....	10
	TABLE I - EQUIPMENT LIST .....	12

**THIS REPORT SHALL NOT BE REPRODUCED, EXCEPT IN FULL,  
WITHOUT THE WRITTEN APPROVAL OF ELITE ELECTRONIC ENGINEERING INC.**



**Measurement of RF Emissions from a Transceiver,  
Model No. CA600J Wall Dimmer Switch**

**1.0 INTRODUCTION:**

**1.1 Description of Test Item** - This document presents the results of the series of radio interference measurements performed on a Transceiver, Model No. CA600J Wall Dimmer Switch (hereinafter referred to as the test item). Three (3) separate units were submitted for testing. One unit, used for conducted emissions tests, was set to act as a transceiver. One unit was set to continuously transmit and one unit was set to continuously receive. The test item was designed to transmit and receive at approximately 908MHz using an internal antenna. The test item was submitted for testing by Intermatic located in Spring Grove, IL.

**1.2 Purpose** - The test series was performed to determine if the test item meets the conducted and radiated RF emission requirements of the FCC "Code of Federal Regulations" Title 47, Part 15, Subpart B, Sections 15.107 and 15.109, and Subpart C, Sections 15.207 and 15.249 for Intentional Radiators Operating within the 902MHz -928MHz band. Testing was performed in accordance with ANSI C63.4-2001.

**1.3 Deviations, Additions and Exclusions** - There were no deviations, additions to, or exclusions from the test specification during this test series.

**1.4 Applicable Documents** - The following documents of the exact issue designated form part of this document to the extent specified herein:

Federal Communications Commission "Code of Federal Regulations", Title 47, Part 15, dated 1 October 2005

ANSI C63.4-2001, "American National Standard for Methods of Measurement of Radio-Noise Emissions from Low-Voltage Electrical and Electronic Equipment in the Range of 9 kHz to 40 GHz"

**1.5 Subcontractor Identification** - This series of tests was performed by Elite Electronic Engineering Incorporated of Downers Grove, Illinois. The laboratory is accredited by the National Institute of Standards and Technology (NIST) under the National Voluntary Laboratory Accreditation Program (NVLAP). NVLAP Lab Code: 100278-0.

**1.6 Laboratory Conditions** The temperature at the time of the test was 23°C and the relative humidity was 44%.

**2.0 TEST ITEM SET-UP AND OPERATION:**

The test item is a Transceiver, Model No. CA600J Wall Dimmer Switch. A block diagram of the test

item set-up is shown as Figure 1.

**2.1 Power Input** - The test item is equipped with three 15cm long wires. For testing purposes, the ground wire was connected to earth ground via a tinned-copper braid. The high and return leads were extended to a total length of 80cm. For conducted emissions tests, each AC power lead to the test item was connected through a line impedance stabilization network (LISN) which was located on the ground plane. The network complies with the requirements of Paragraph 4.1.2 of ANSI C63.4-2001.

**2.2 Grounding** - The test item was grounded during the tests. The 15cm-long ground wire was connected to earth ground via a tinned-copper braid

**2.3 Peripheral Equipment** - The test item was submitted for testing with a 40 watt light bulb.

**2.4 Interconnect Cables** - The 40 watt light bulb was powered through the test item's power cord via a 95cm-long power cord.

**2.5 Operational Mode** - For all tests, the test item was placed on an 80cm high non-conductive stand. The test item was energized. For conducted emissions tests, the test item was set to act as a transceiver (idle mode). Two separate radiated emissions tests were performed, one with the test item set to transmit continuously at 908.4MHz and one with the test item set to receive continuously at 908.3MHz.

**2.6 Test Item Modifications** - No modifications were required for compliance to the FCC "Code of Federal Regulations" Title 47, Part 15, Subpart B, Sections 15.107 and 15.109, and Subpart C, Sections 15.207 and 15.249 requirements.

### **3.0 TEST EQUIPMENT:**

**3.1 Test Equipment List** - A list of the test equipment used can be found on Table I. All equipment was calibrated per the instruction manuals supplied by the manufacturer.

**3.2 Calibration Traceability** Test equipment is maintained and calibrated on a regular basis. All calibrations are traceable to the National Institute of Standards and Technology (NIST).

**3.3 Measurement Uncertainty** - All measurements are an estimate of their true value. The measurement uncertainty characterizes, with a specified confidence level, the spread of values which may be possible for a given measurement system.

The measurement uncertainty budgets were based on guidelines in "ISO Guide to the Expression of Uncertainty in Measurements" and NAMAS NIS81 "The Treatment of Uncertainty in EMC Measurements".

The measurement uncertainty for these tests is presented below:

Conducted Emission Measurements		
Combined Standard Uncertainty	1.07	-1.07
Expanded Uncertainty (95% confidence)	2.1	-2.1

Radiated Emission Measurements		
Combined Standard Uncertainty	2.26	-2.18
Expanded Uncertainty (95% confidence)	4.5	-4.4

**4.0 REQUIREMENTS, PROCEDURES AND RESULTS:**

**4.1 Powerline Conducted Emissions**

**4.1.1 Requirements** - Per 15.107(a), all radio frequency voltages on the power lines of a receiver shall be below the values shown below when using a quasi-peak detector:

**CONDUCTED LIMITS FOR CLASS B DEVICE**

Frequency MHz	RFI Voltage dBuV(QP)	RFI Voltage dBuV(Average)
0.15-0.5	66 decreasing with logarithm of frequency to 56	56 decreasing with logarithm of frequency to 46
0.5-5	56	46
5-30	60	50

Note 1: The lower limit shall apply at the transition frequencies.

Note 2: If the levels measured using the QP detector meet both the QP and the Average limits, the test item is considered to have met both requirements and measurements do not need to be performed using the Average detector.

Per 15.207, all radio frequency voltages on the power lines of an intentional radiator shall be below the values shown below when using a quasi-peak detector:

**CONDUCTED LIMITS FOR CLASS B DEVICE**

Frequency MHz	RFI Voltage dBuV(QP)	RFI Voltage dBuV(Average)
0.15-0.5	66 decreasing with logarithm of frequency to 56	56 decreasing with logarithm of frequency to 46
0.5-5	56	46
5-30	60	50

Note 1: The lower limit shall apply at the transition frequencies.

Note 2: If the levels measured using the QP detector meet both the QP and the Average limits, the test item is considered to have met both requirements and measurements do not need to be performed using the Average detector.

**4.1.2 Procedures** - The interference on each power lead was measured by connecting the measuring equipment to the appropriate meter terminal of the LISN. The meter terminal of the LISN not under test was terminated with 50 ohm. Measurements were first made over the entire frequency range from 150kHz through 30MHz with a peak detector and the results were automatically plotted. The data thus obtained was then searched by the computer for the highest levels. Quasi-peak measurements were automatically performed at the frequencies selected from the highest peak measurements, and the results printed.

**4.1.3 Results** - The plots of the peak preliminary conducted voltage levels on each power line with the test item operated in the idle mode are presented on pages 16 and 17. The conducted limit for receivers is shown as a reference. The final quasi-peak results are presented on pages 18 and 19. As can be seen from the data, all conducted emission levels met the requirements. The emissions level closest to the limit (worst case) occurred at 195kHz. The emissions level at this frequency was 13.4dB within the limit. Photographs of the test configuration which yielded the highest or worst case, conducted emission levels are shown on Figure 2.

**4.2 Radiated Measurements**

**4.2.1 Receiver**

**4.2.1.1 Requirements** - - All emanations from a receiver shall be below the levels shown on the following table:

**RADIATION LIMITS FOR CLASS B DEVICE**

Frequency MHz	Distance between Test Item And Antenna in Meters	Field Strength uV/m	Field Strength dBuV/m
30-88	3	100	40
88-216	3	150	43.5
216-960	3	200	46
Above 960	3	500	54

Note: The tighter limit shall apply at the edge between the two frequency bands.

**4.2.1.2 Procedures** - All tests were performed in a 32ft. x 20ft. x 18ft. hybrid ferrite-tile/anechoic absorber lined test chamber. The walls and ceiling of the shielded chamber are lined

with ferrite tiles. Anechoic absorber material is installed over the ferrite tile. The floor of the chamber is used as the ground plane. The chamber complies with ANSI C63.4 2001 for site attenuation.

The shielded enclosure prevents emissions from other sources, such as radio and TV stations from interfering with the measurements. All powerlines and signal lines entering the enclosure pass through filters on the enclosure wall. The powerline filters prevent extraneous signals from entering the enclosure on these leads.

Since quasi-peak and average measurements require long integration times, it is not practical to automatically sweep through the quasi-peak or average levels. Therefore, radiated emissions from the test item were first scanned using a peak detector and automatically plotted. The frequencies where significant emission levels were noted were then remeasured using the quasi-peak detector.

For preliminary radiated emissions sweeps from 30MHz to 5GHz, the broadband measuring antenna was positioned at a 3 meter distance from the test item. The frequency range from 30MHz to 5GHz was investigated using a peak detector function with the bilog antenna below 1GHz and the double-ridged waveguide antenna above 1GHz. The maximum levels were plotted.

Final radiated emissions were performed on all significant broadband and narrowband emissions found in the preliminary sweeps using the following methods:

- 1) Measurements below 1GHz were made using a quasi-peak detector and a dipole antenna. Measurements above 1GHz were made using an average detector and a double ridged waveguide antenna.
- 2) To ensure that maximum or worst case, emission levels were measured, the following steps were taken:
  - a. The test item was rotated so that all of its sides were exposed to the receiving antenna.
  - b. Since the measuring antenna is linearly polarized, both horizontal and vertical field components were measured.
  - c. The measuring antenna was raised and lowered from 1 to 4 meters for each antenna polarization to maximize the readings.

**4.2.1.3 Results** - The preliminary plots are presented on pages 20 and 21. The plots are presented for a reference only, and are not used to determine compliance. The final radiated

levels are presented on pages 22. As can be seen from the data, all emissions measured from the test item were within the specification limits for receivers. The emissions level closet to the limit



(worst case) occurred at 908.3MHz. The emissions level at this frequency was 8.7dB within the limit. Photographs of the test configuration which yielded the highest or worst case, radiated emission levels are shown on Figures 3a and 3b.

**4.2.2 Transmitters -**

**4.2.2.1 Requirements -** The test item must comply with the requirements of FCC "Code of Federal Regulations Title 47", Part 15, Subpart C, Section 15.205 et seq.

Paragraph 15.249(a) has the following radiated emission limits:

Fundamental Frequency MHz	Field Intensity mV/m @ 3 meters	Field Strength Harmonics and Spurious uV/m @ 3 meters
902 to 928	50	500

In addition, emissions appearing in the Restricted Bands of Operation listed in paragraph 15.205(a) shall not exceed the general requirements shown in paragraph 15.209.

**4.2.2.2 Procedures -** All measurements were performed in a 32ft. x 20ft. x 14ft. high shielded enclosure. The shielded enclosure prevents emissions from other sources, such as radio and TV stations from interfering with the measurements. All powerlines and signal lines entering the enclosure pass through filters on the enclosure wall. The powerline filters prevent extraneous signals from entering the enclosure on these leads. The floor of the chamber is used as the ground plane. The chamber complies with ANSI C63.4-2001 for site attenuation.

A preliminary radiated emissions test was performed to determine the emission characteristics of the test item. For the preliminary test, a broadband measuring antenna was positioned at a 3 meter distance from the test item. The entire frequency range from 30MHz to 10GHz was investigated using a peak detector function. The data was then processed by the computer to calculate equivalent field intensity.

The final emission tests were then manually performed over the frequency range of 30MHz to 9.1GHz. Between 30MHz and 1000MHz, a tuned dipole antenna was used as the pick-up device. A broadband double ridged waveguide antenna was used as the pick-up device for all frequencies above 1GHz. All significant broadband and narrowband signals were measured and recorded.

To ensure that maximum or worst case, emission levels were measured, the following steps were taken:



- (1) The test item was rotated so that all of its sides were exposed to the receiving antenna.
- (2) Since the measuring antenna is linearly polarized, both horizontal and vertical field components were measured.
- (3) The measuring antenna was raised and lowered from 1 to 4 meters for each antenna polarization to maximize the readings.

**4.2.2.3 Results** - The preliminary plots, with the test item transmitting at 908.4MHz, are presented on data pages 23 and 24. The plots are presented for a reference only, and are not used to determine compliance. The final radiated levels, with the test item transmitting at 908.4MHz, are presented on data page 25. As can be seen from the data, all emissions measured from the test item were within the specification limits. The emissions level closest to the limit (worst case) occurred at 2725.3MHz. The emissions level at this frequency was 0.5dB within the limit. Photographs of the test configuration which yielded the highest or worst case, radiated emission levels are shown on Figures 3a and 3b.

### **4.3 Occupied Bandwidth Measurements**

**4.3.1 Requirement** - In accordance with paragraph 15.249(d), all emissions radiated outside of the specified frequency bands, except for harmonics, shall be attenuate by at least 50dB below the level of the fundamental or to the general radiated emissions limits in 15.209, which ever is the lesser attenuation.

**4.3.2 Procedures** - The test item was placed on an 80cm high non-conductive stand. The unit was set to transmit continuously. With an antenna positioned nearby, occupied bandwidth emissions were displayed on the spectrum analyzer. The resolution bandwidth was set to 100 kHz and span was set to 30 MHz. The frequency spectrum near the fundamental was plotted.

**4.3.3 Results** - The plot of the emissions near the fundamental frequency is presented on data page 26. As can be seen from this data page, the transmitter met the occupied bandwidth requirements.

## **5.0 CONCLUSIONS:**

It was determined that the Intermatic Transceiver, Model No. CA600J Wall Dimmer Switch, (Serial No. none assigned) did fully meet the conducted and radiated emission requirements of the FCC "Code of Federal Regulations" Title 47, Part 15, Subpart B, Sections 15.107 and 15.109 for receivers, and Subpart C, Sections 15.207 and 15.249 for Intentional Radiators Operating within the 902MHz -928MHz band,



when tested per ANSI C63.4-2001.

**6.0 CERTIFICATION:**

Elite Electronic Engineering Incorporated certifies that the information contained in this report was obtained under conditions which meet or exceed those specified in the test specifications.

The data presented in this test report pertains to the test item at the test date. Any electrical or mechanical modification made to the test item subsequent to the specified test date will serve to invalidate the data and void this certification.

**7.0 ENDORSEMENT DISCLAIMER:**

This report must not be used to claim product endorsement by NVLAP or any agency of the US Government.



TABLE I: TEST EQUIPMENT LIST

ELITE ELECTRONIC ENG. INC.							Page: 1	
Eq ID	Equipment Description	Manufacturer	Model No.	Serial No.	Frequency Range	Cal Date	Cal Inv	Due Date
Equipment Type: ACCESSORIES, MISCELLANEOUS								
XZG0	ATTENUATOR/SWITCH DRIVER	HEWLETT PACKARD	11713A	3439A02724	---			N/A
Equipment Type: AMPLIFIERS								
APK0	PRE-AMPLIFIER	HEWLETT PACKARD	8449B	3008A00662	1-26.5GHZ	03/06/06	12	03/06/07
Equipment Type: ATTENUATORS								
TIN1	10DB 20W ATTENUATOR	NARDA	766-10		DC-4GHZ	09/07/05	12	09/07/06
Equipment Type: CONTROLLERS								
CDS2	COMPUTER	GATEWAY	MFATXPNT	NMZ 0028483108	1.8GHZ			N/A
CMA0	MULTI-DEVICE CONTROLLER	EMCO	2090	9701-1213	---			N/A
Equipment Type: PROBES; CLAMP-ON & LISNS								
PLL9	50UH LISN 462D	ELITE	462D/70A	010	0.01-400MHZ	03/06/06	12	03/06/07
PLLA	50UH LISN 462D	ELITE	462D/70A	011	0.01-400MHZ	03/06/06	12	03/06/07
Equipment Type: PRINTERS AND PLOTTERS								
HRE1	LASER JET 5P	HEWLETT PACKARD	C3150A	USHB061052	---			N/A
Equipment Type: RECEIVERS								
RAC1	SPECTRUM ANALYZER	HEWLETT PACKARD	85660B	3407A08369	100HZ-22GHZ	02/13/06	12	02/13/07
RACB	RF PRESELECTOR	HEWLETT PACKARD	85685A	3506A01491	20HZ-2GHZ	02/13/06	12	02/13/07
RAF3	QUASIPeAK ADAPTER	HEWLETT PACKARD	85650A	3303A01775	0.01-1000MHZ	02/13/06	12	02/13/07
RAKG	RF SECTION	HEWLETT PACKARD	85462A	3549A00284	0.009-6500MHZ	11/22/05	12	11/22/06
RAKH	RF FILTER SECTION	HEWLETT PACKARD	85460A	3448A00324	---	11/22/05	12	11/22/06

Cal. Interval: Listed in Months I/O: Initial Only N/A: Not Applicable  
 Note 1: For the purpose of this test, the equipment was calibrated over the specified frequency range, pulse rate, or modulation prior to the test or monitored by a calibrated instrument.

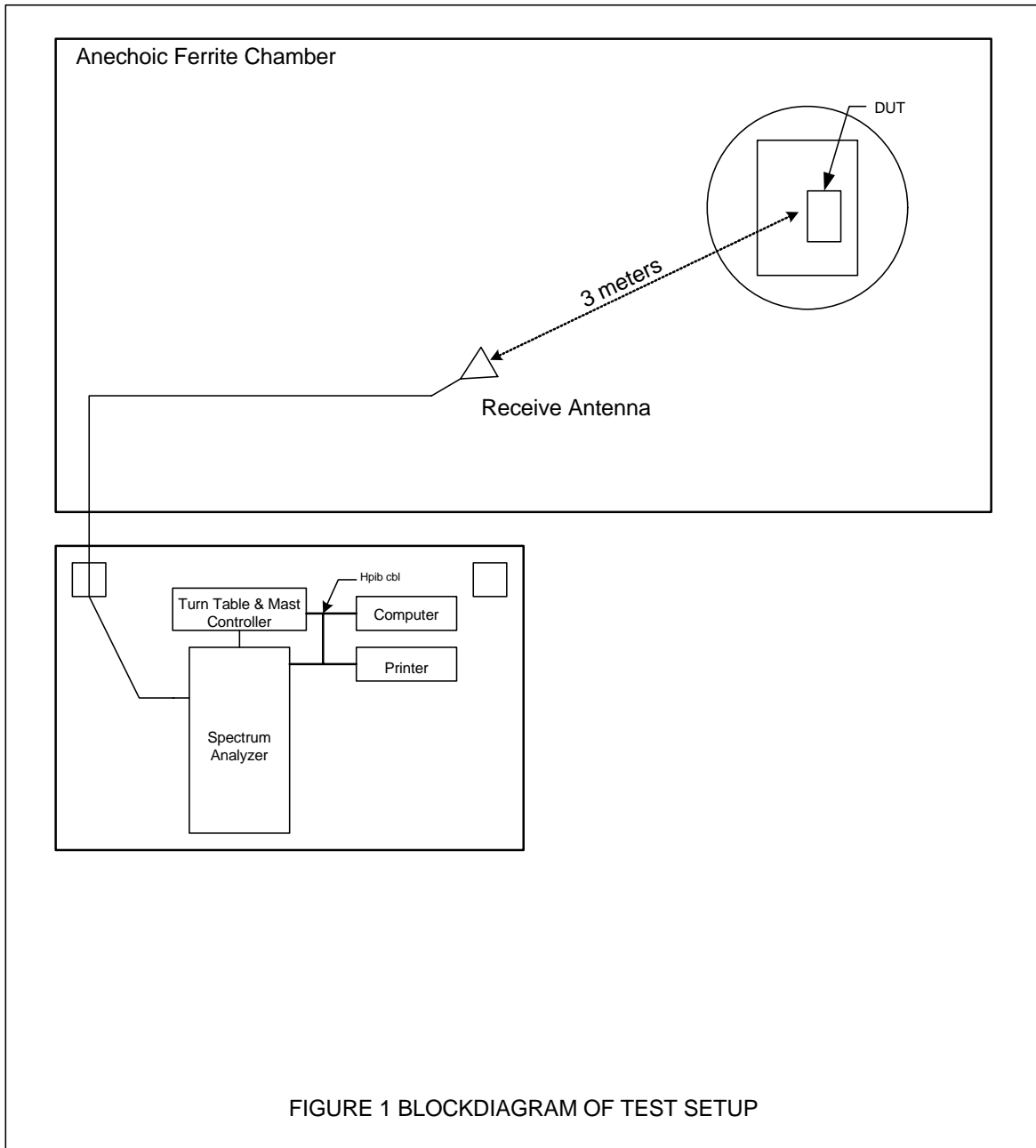


Figure 2



Test Setup for Conducted Emissions

Figure 3a



Test Setup for Radiated Emissions, 908MHz – Horizontal Polarization



Test Setup for Radiated Emissions, 908MHz – Vertical Polarization

Figure 3b



Test Setup for Radiated Emissions, 1GHz to 10GHz – Horizontal Polarization

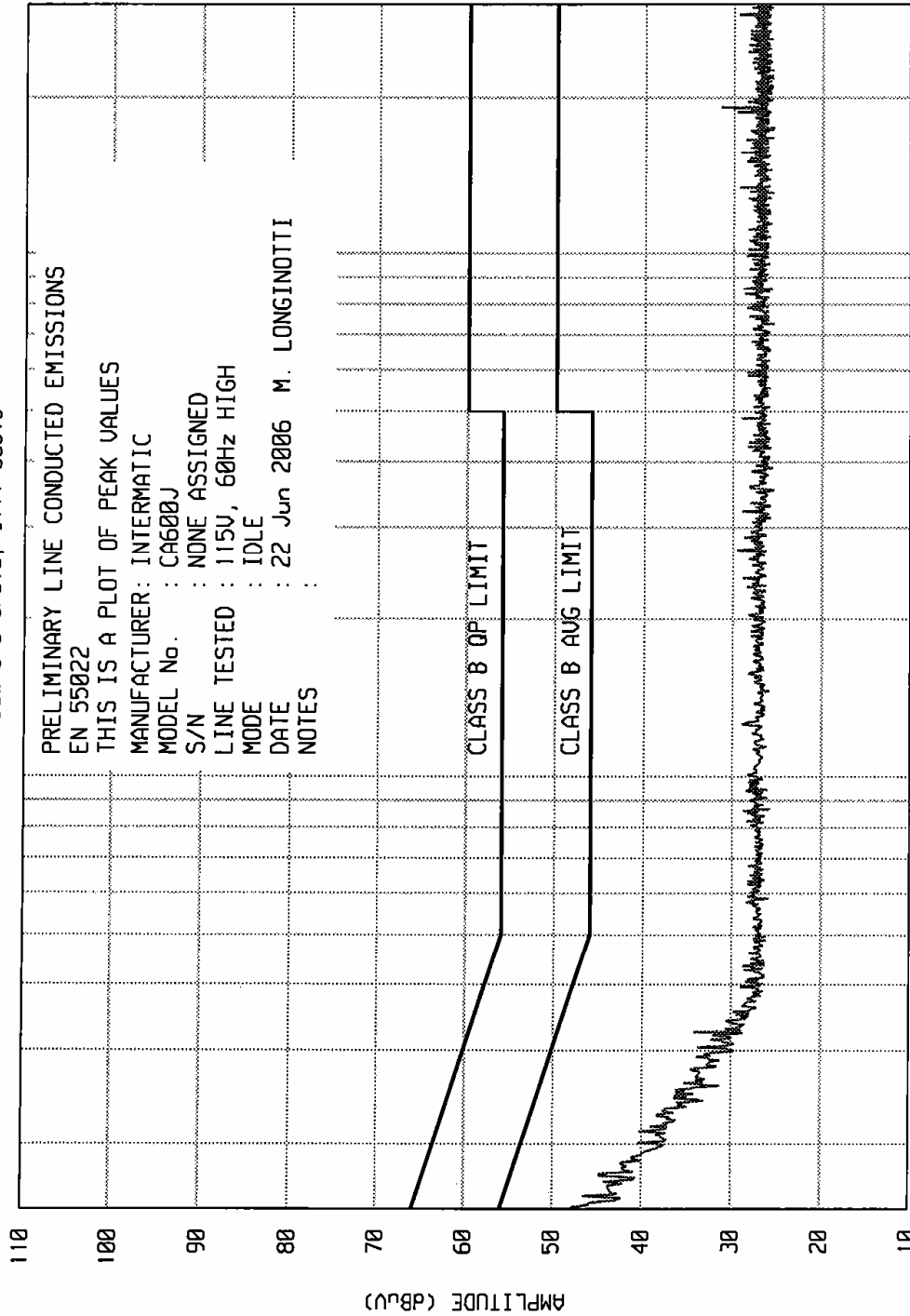


Test Setup for Radiated Emissions, 1GHz to 10GHz – Vertical Polarization

8566

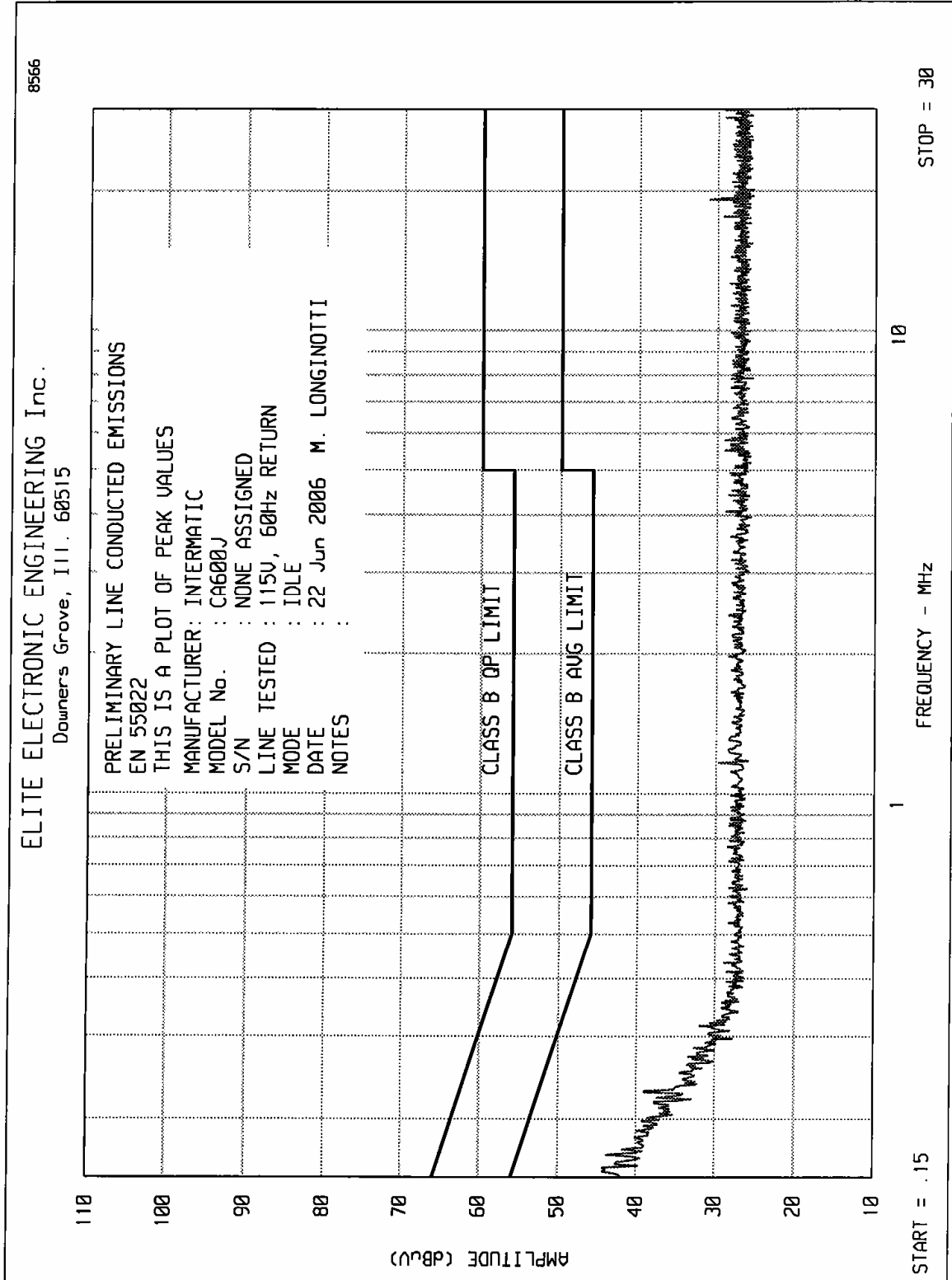
ELITE ELECTRONIC ENGINEERING INC.  
Downers Grove, Ill. 60515

PRELIMINARY LINE CONDUCTED EMISSIONS  
EN 55022  
THIS IS A PLOT OF PEAK VALUES  
MANUFACTURER: INTERMATIC  
MODEL No. : CA600J  
S/N : NONE ASSIGNED  
LINE TESTED : 115V, 60Hz HIGH  
MODE : IDLE  
DATE : 22 Jun 2006 M. LONGINOTTI  
NOTES :



START = .15      STOP = 30







ETR No.  
ELITE ELECTRONIC ENGINEERING CO.

MANUFACTURER : INTERMATIC  
MODEL : CA600J  
S/N : NONE ASSIGNED  
SPECIFICATION : EN 55022, CLASS B  
TEST : LINE CONDUCTED EMISSIONS  
LINE TESTED : 115V, 60Hz HIGH  
MODE : IDLE  
DATE : 22 Jun 2006  
NOTES :  
RECEIVER : HP 8566 w/ HP85650A QP ADAPTOR  
VALUES MEASURED WITH QP DETECTOR USING 9kHz BANDWIDTH

FREQUENCY MHz	METER RDG. dBuV	QP LIMIT dBuV	AVG RDG dBuV	AVG LIMIT dBuV	NOTES
.150	34.4	66.0		56.0	
.344	26.2	59.1		49.1	
.800	25.6	56.0		46.0	
2.291	25.5	56.0		46.0	
3.155	25.5	56.0		46.0	
5.627	25.0	60.0		50.0	
7.515	25.0	60.0		50.0	
9.855	25.1	60.0		50.0	
12.728	25.0	60.0		50.0	
15.653	25.0	60.0		50.0	
19.142	27.1	60.0		50.0	
22.033	25.0	60.0		50.0	
24.308	25.0	60.0		50.0	
26.683	25.0	60.0		50.0	

CHECKED BY: Mark E Longinotti  
M. LONGINOTTI

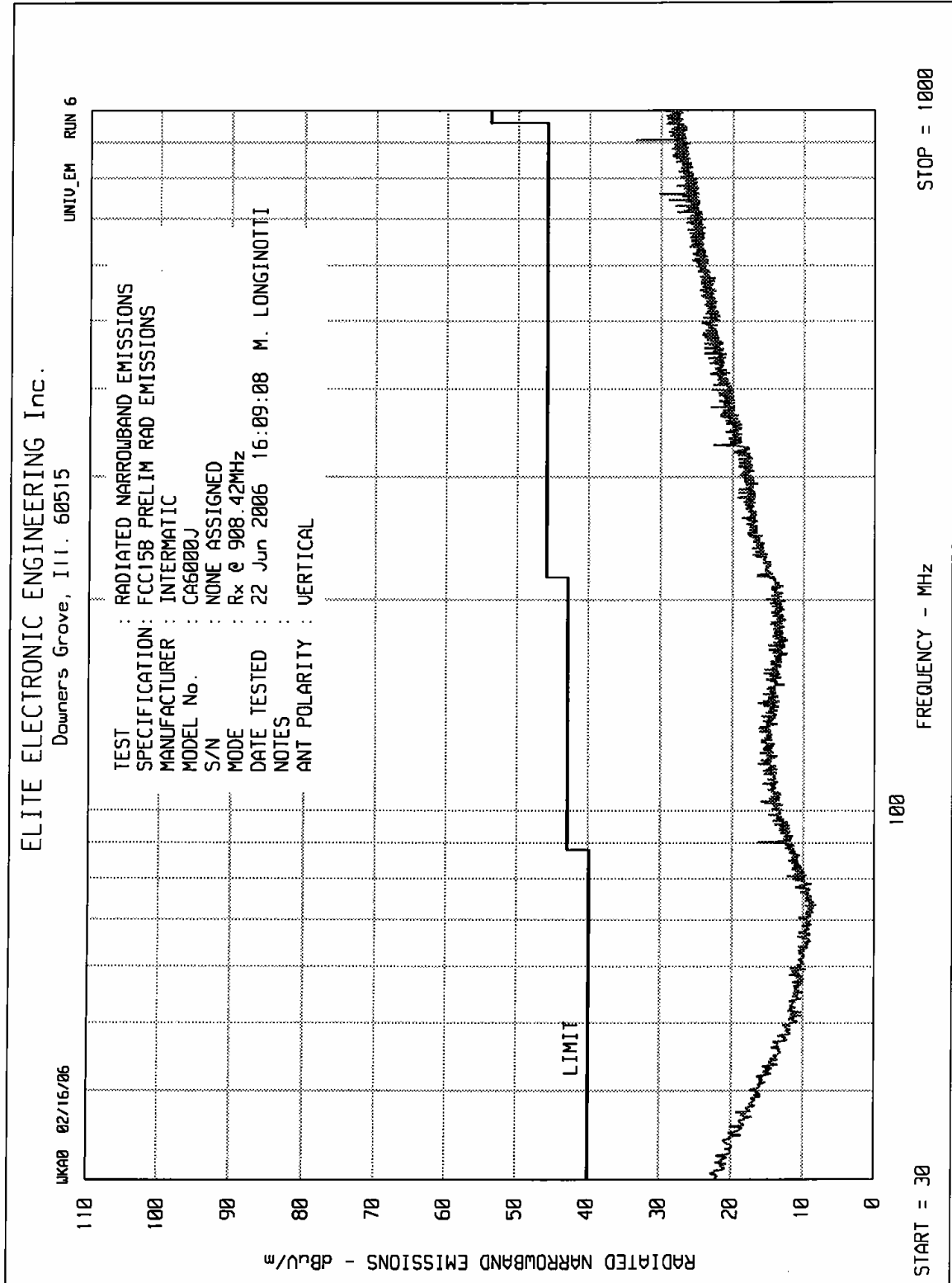


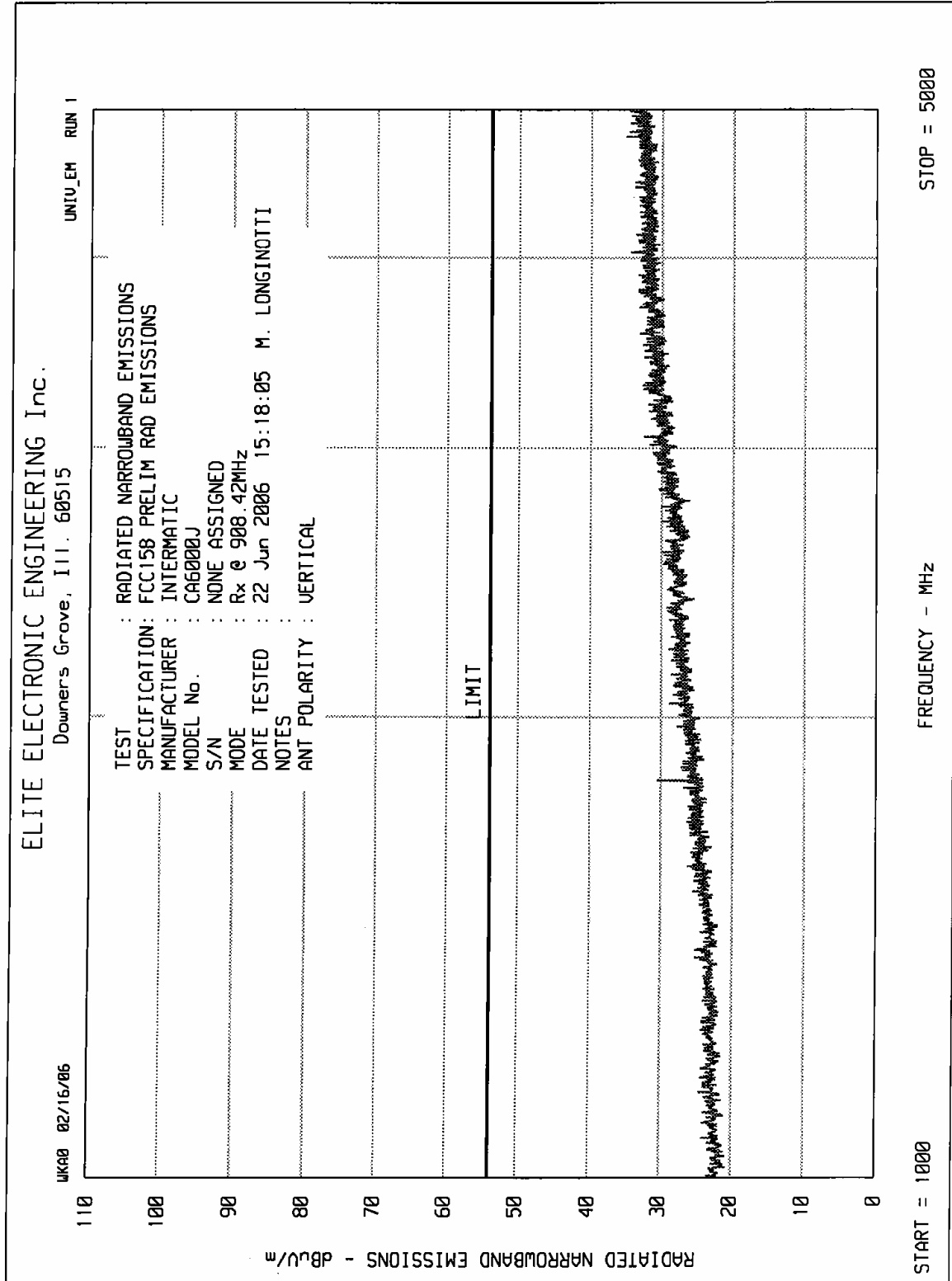
ETR No.  
ELITE ELECTRONIC ENGINEERING CO.

MANUFACTURER : INTERMATIC  
MODEL : CA600J  
S/N : NONE ASSIGNED  
SPECIFICATION : EN 55022, CLASS B  
TEST : LINE CONDUCTED EMISSIONS  
LINE TESTED : 115V, 60Hz RETURN  
MODE : IDLE  
DATE : 22 Jun 2006  
NOTES :  
RECEIVER : HP 8566 w/ HP85650A QP ADAPTOR  
VALUES MEASURED WITH QP DETECTOR USING 9kHz BANDWIDTH

FREQUENCY MHz	METER RDG. dBuV	QP LIMIT dBuV	AVG RDG dBuV	AVG LIMIT dBuV	NOTES
.150	33.8	66.0		56.0	
.195	40.4	63.8		53.8	
.345	25.3	59.1		49.1	
.757	25.8	56.0		46.0	
1.400	25.6	56.0		46.0	
2.974	25.6	56.0		46.0	
4.028	25.5	56.0		46.0	
7.474	25.0	60.0		50.0	
9.859	25.1	60.0		50.0	
12.498	25.1	60.0		50.0	
15.628	25.0	60.0		50.0	
19.175	27.4	60.0		50.0	
21.703	25.0	60.0		50.0	
24.238	25.1	60.0		50.0	
27.458	25.0	60.0		50.0	

CHECKED BY: Mark E Longinotti  
M. LONGINOTTI







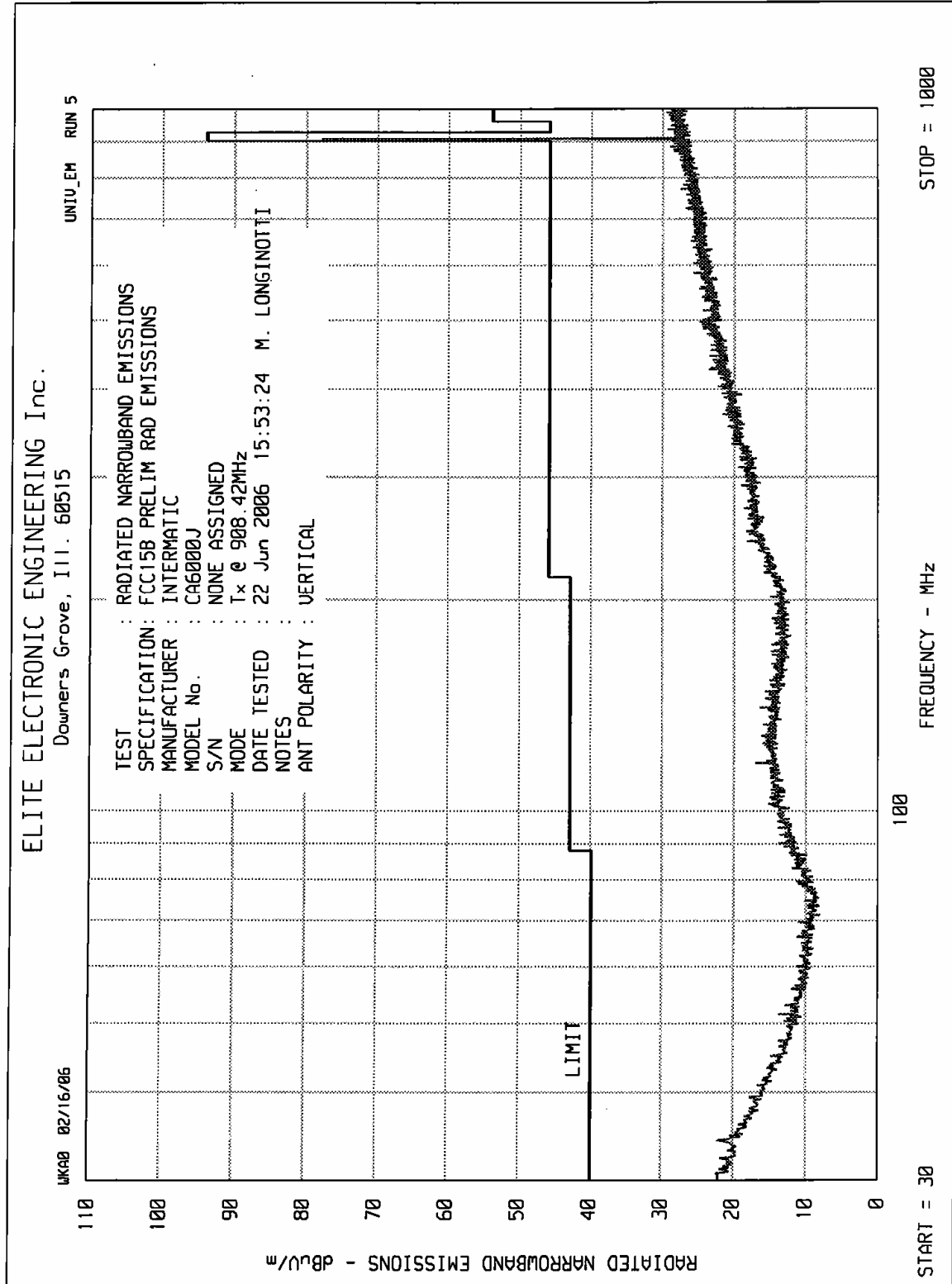
MANUFACTURER : Intermatic  
TEST ITEM : Transceiver  
MODEL NO. : CA600J Wall Dimmer Switch With Transceiver  
SERIAL NO. : None Assigned  
TEST SPECIFICATION : FCC 15.109(a), Radiated Emissions  
MODE : Receive @ 908.3MHz  
TEST DATE : June 22, 2006  
TEST DISTANCE : 3 meters

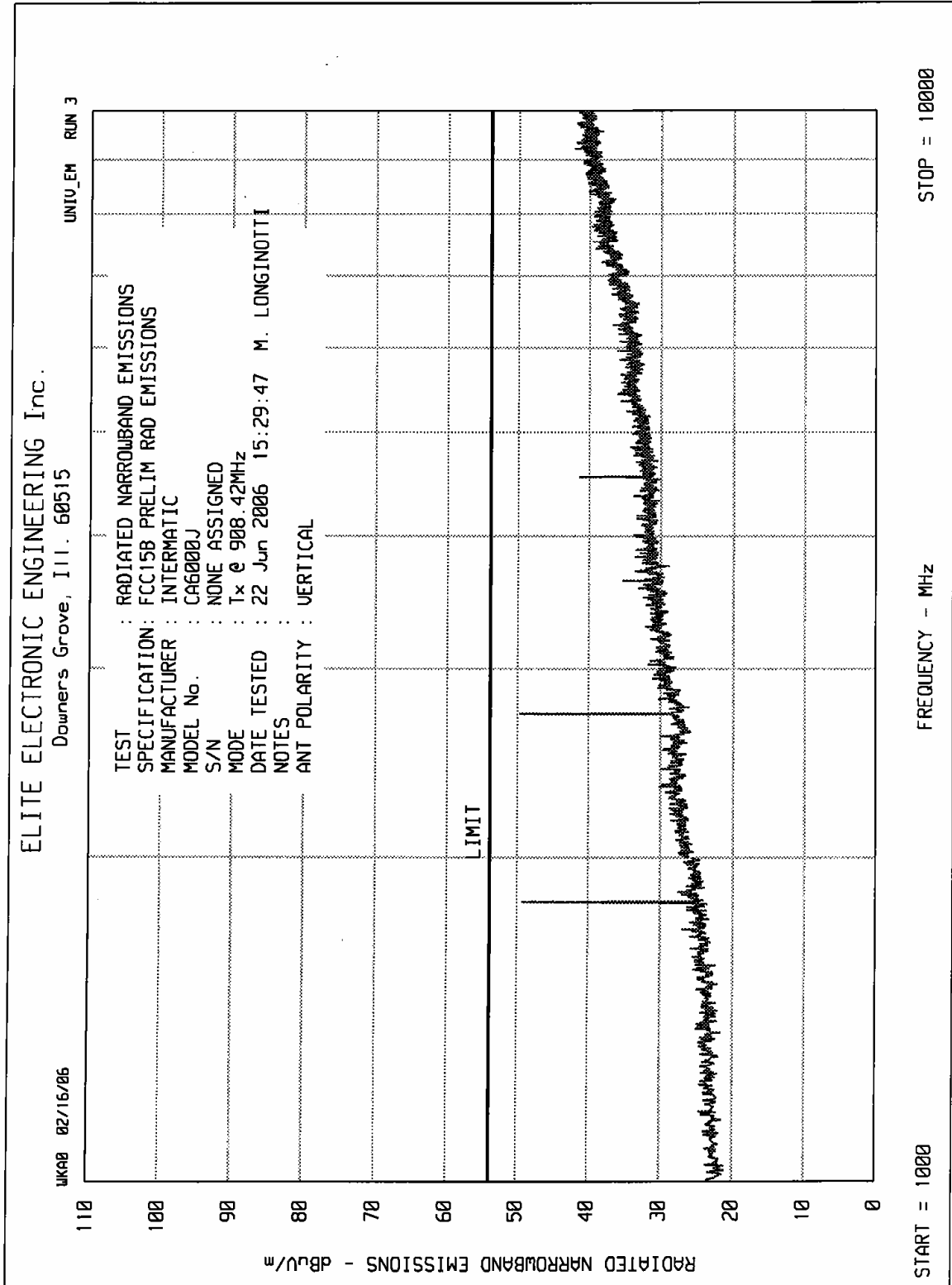
Frequency MHz	Antenna Polarity	Meter Reading dBuV	Ambient	Cable Loss dB	Antenna Factor dB	Preamp Gain dB	Total dBuV/m	Total uV/m	Limit uV/m
908.3	H	7.8		1.9	27.6	0.0	37.3	73.7	200.0
908.3	V	2.5		1.9	23.0	0.0	27.4	23.5	200.0
1816.6	H	37.2	Ambient	2.9	27.5	-36.3	31.3	36.6	500.0
1816.6	V	39.3	Ambient	2.9	27.5	-36.3	33.4	46.6	500.0
2724.9	H	30.2	Ambient	3.8	30.5	-35.9	28.6	26.8	500.0
2724.9	V	30.3	Ambient	3.8	30.5	-35.9	28.7	27.1	500.0
3633.2	H	31.1	Ambient	4.4	32.4	-35.6	32.3	41.4	500.0
3633.2	V	31.9	Ambient	4.4	32.4	-35.6	33.1	45.4	500.0
4541.5	H	29.4	Ambient	4.8	32.9	-35.3	31.8	38.9	500.0
4541.5	V	29.4	Ambient	4.8	32.9	-35.3	31.8	38.9	500.0

H – Horizontal  
V = Vertical

Total = Meter Reading + Cable Loss + Antenna Factor + Preamp Gain

Checked By : MARK E. LONGINOTTI









MANUFACTURER : Intermatic  
 TEST ITEM : Transceiver  
 MODEL NO. : CA600J Wall Dimmer Switch With Transceiver  
 SERIAL NO. : None Assigned  
 TEST SPECIFICATION : FCC 15.249(a), Radiated Emissions  
 MODE : Transmit @ 908.4MHz  
 TEST DATE : June 22, 2006  
 TEST DISTANCE : 3 meters

Frequency MHz	Antenna Polarity	Meter Reading dBuV	Ambient	Cable Loss dB	Antenna Factor dB	Preamp Gain dB	Total dBuV/m	Total uV/m	Limit uV/m
908.4	H	54.1		1.9	27.6	0.0	83.7	15225.6	50000.0
908.4	V	53.0		1.9	23.0	0.0	77.9	7866.9	50000.0
1816.8	H	57.8		2.9	27.5	-36.3	51.9	391.8	500.0
1816.8	V	59.1		2.9	27.5	-36.3	53.2	455.0	500.0
2725.3	H	50.1		3.8	30.5	-35.9	48.5	264.8	500.0
2725.3	V	55.1		3.8	30.5	-35.9	53.5	470.8	500.0
3633.7	H	51.0		4.4	32.4	-35.6	52.2	409.7	500.0
3633.7	V	47.8		4.4	32.4	-35.6	49.0	283.4	500.0
4542.1	H	34.9		4.8	32.9	-35.3	37.3	73.2	500.0
4542.1	V	41.9		4.8	32.9	-35.3	44.3	164.0	500.0
5450.5	H	31.4	Ambient	5.2	36.9	-35.2	38.4	82.8	500.0
5450.5	V	33.3	Ambient	5.2	36.9	-35.2	40.3	103.0	500.0
6358.9	H	35.4	Ambient	5.9	35.7	-35.3	41.7	122.1	500.0
6358.9	V	31.8	Ambient	5.9	35.7	-35.3	38.1	80.7	500.0
7267.4	H	28.9	Ambient	6.6	37.5	-35.6	37.5	74.9	500.0
7267.4	V	29.0	Ambient	6.6	37.5	-35.6	37.6	75.8	500.0
8175.8	H	29.8	Ambient	7.1	38.1	-35.8	39.3	91.9	500.0
8175.8	V	29.9	Ambient	7.1	38.1	-35.8	39.4	93.0	500.0
9084.2	H	30.2	Ambient	7.5	38.6	-36.2	40.1	100.8	500.0
9084.2	V	30.2	Ambient	7.5	38.6	-36.2	40.1	100.8	500.0

H – Horizontal

V = Vertical

Total = Meter Reading + Cable Loss + Antenna Factor + Preamp Gain

Checked By : MARK E. LONGINOTTI

ELITE ELECTRONIC ENGINEERING Inc.

