

NEUTRAL 1

LINE IN 1

R10

VOLTAGE SELECT

120V

208V

240V

277V

CAUTION!  
INSTALL ONLY ONE

1xDPST  
2xSPST  
S1

83

R5

R9

R4

R3

R2

R1

R8

2H3

102

390

06C

361

191

102

Tp1

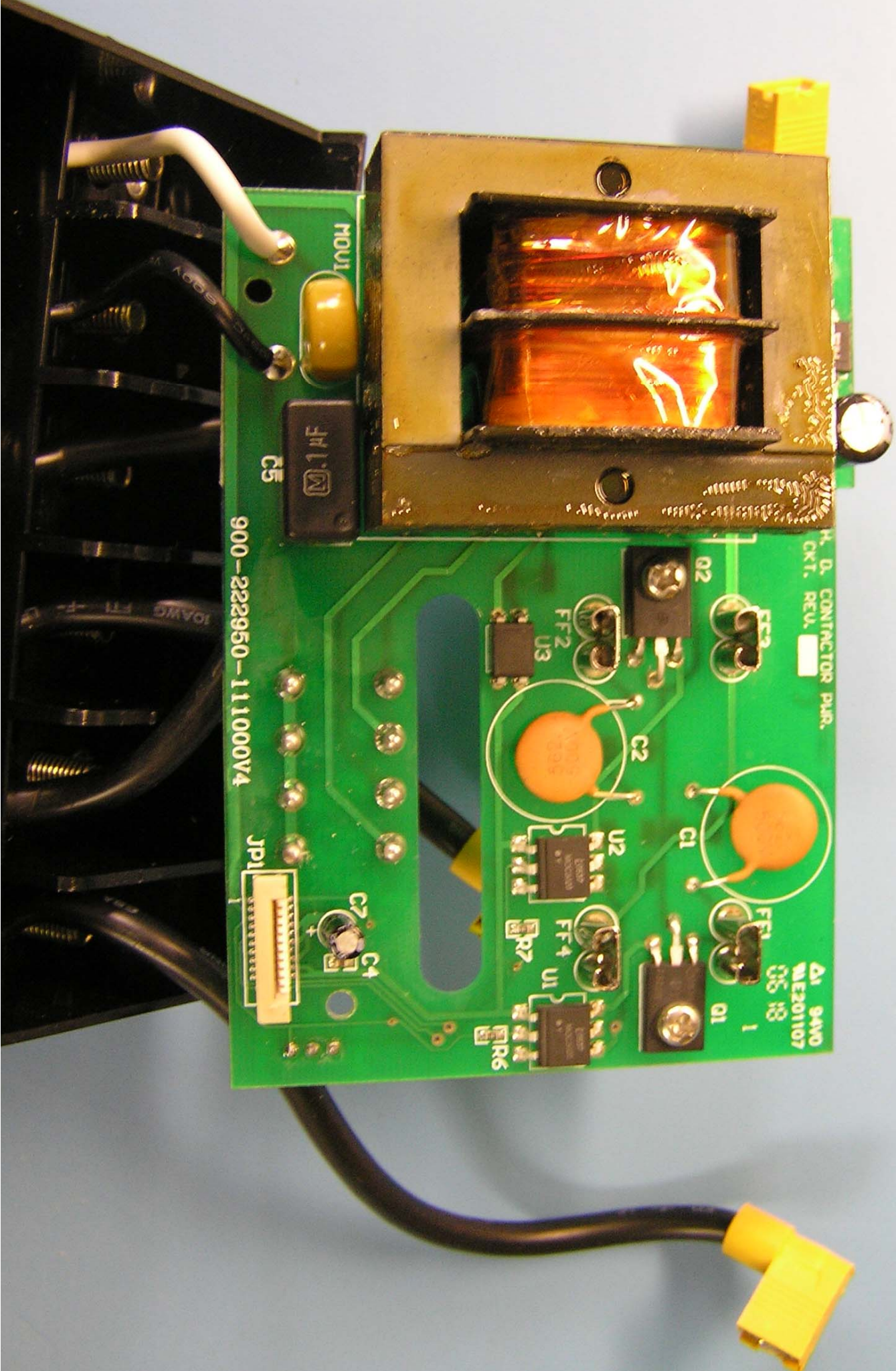
Tp4

Tp3

Tp2

Tp5





H. D. CONTACTOR PUR.  
CKT. REV. [ ]

Δ1 94V0  
ME201107  
05 18  
1

900-222950-111000V4

H0U1

1.1μF

C5

R2

FF2

U3

FF2

C2

C1

U2

FF1

R1

U1

FF4

R7

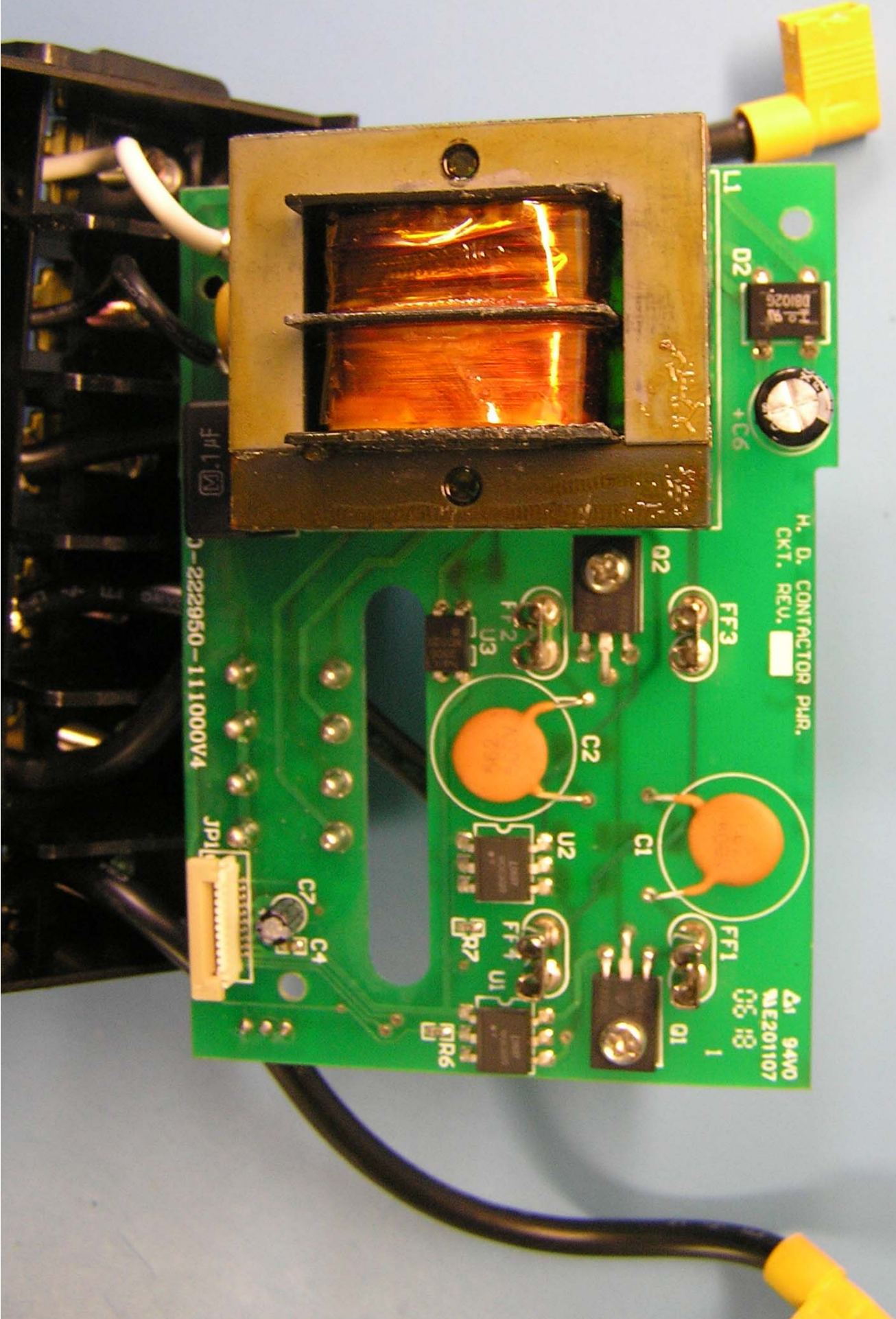
R6

C3

C4

JP1





1.1 μF

0-222960-111000V4

JPL1

L1

D2

1.8 98  
DB025

+C6

H. D. CONTACTOR PHR.  
CKT. REV. 1

O2

FF3

C2

C1

FF1

Δ1 94V0  
ME201107  
06 13 1

FF2

U3

U2

FF4

U1

R7

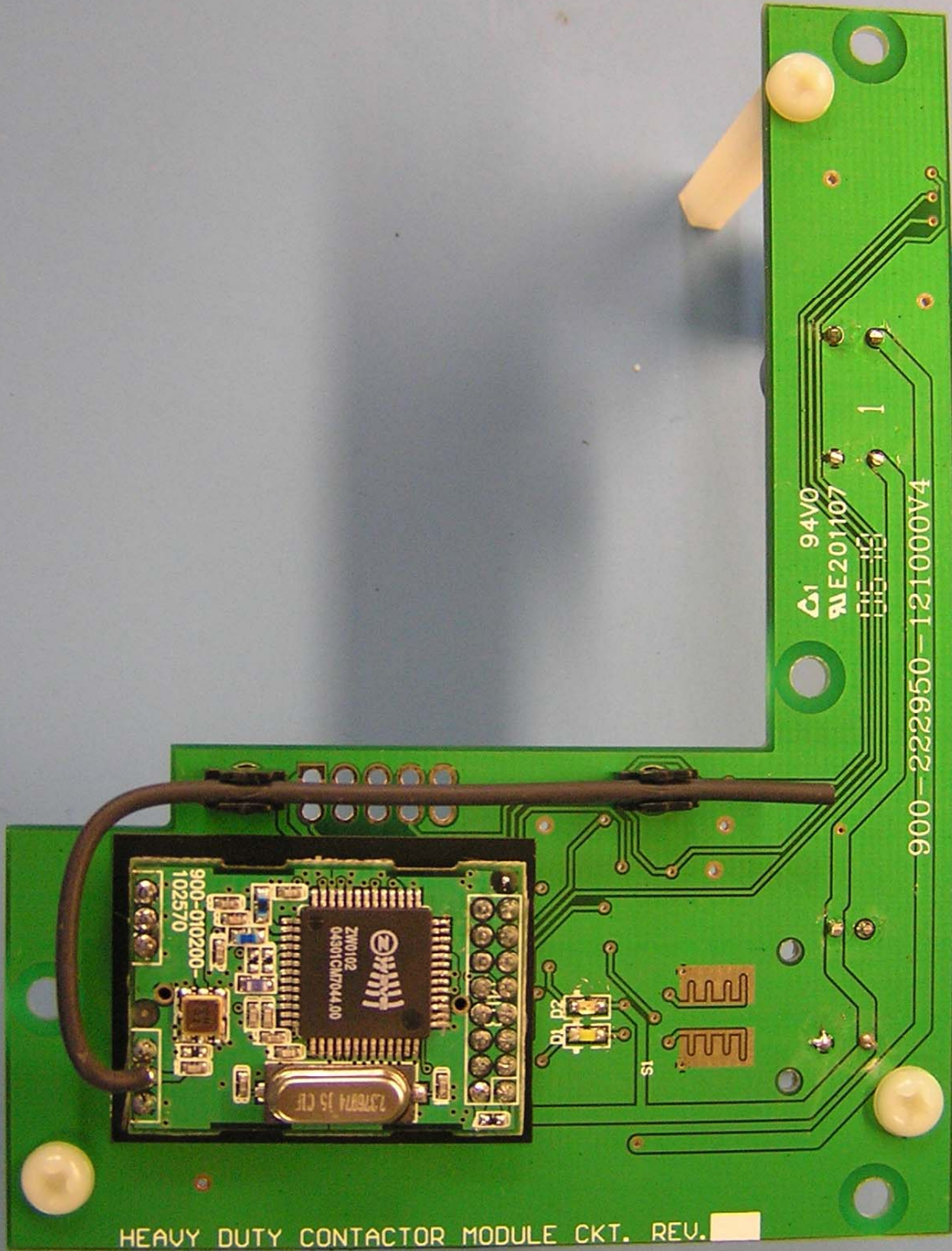
R6

C7

C4

R5





HEAVY DUTY CONTACTOR MODULE CKT. REV.

900-010200-102570

210102  
Q4801CMT004.00

237874 J5 C1F

C1 94V0  
E201107  
E201107  
E201107  
1

900-222950-121000V4



