



Measurement of RF Interference from a Model
PE650 Transceiver

For : Delta Mobile Software, Inc.
Hoffman Estates, IL

P.O. No. : DMS-196

Date Received : September 19, 2005

Date Tested : September 19, 2005 through September 30, 2005

Test Personnel : Mark E. Longinotti, NARTE® Certified EMC Test
: Engineer, ATL-0154-E

Specification : FCC "Code of Federal Regulations" Title 47
Part 15, Subpart B and Subpart C, Section 15.249 for
Intentional Radiators Operating within the 902MHz to
928MHz band

Test Report By : *MARK E. LONGINOTTI*
Mark E. Longinotti
NARTE® Certified EMC Test
Engineer, ATL-0154-E

Approved By : *Raymond J. Klouda*
Raymond J. Klouda
Registered Professional Engineer of
Illinois - 44894



PARAGRAPH NO.	DESCRIPTION OF CONTENTS	PAGE
1.0	INTRODUCTION.....	3
1.1	Description of Test Item.....	3
1.2	Purpose.....	3
1.3	Deviations, Additions and Exclusions.....	3
1.4	Applicable Documents.....	3
1.5	Subcontractor Identification.....	3
1.6	Laboratory Conditions.....	3
2.0	TEST ITEM SETUP AND OPERATION.....	4
2.1	Power Input.....	4
2.2	Grounding.....	4
2.3	Peripheral Equipment.....	4
2.4	Interconnect Cables.....	4
2.5	Operational Mode.....	5
2.6	Test Item Modifications.....	5
3.0	TEST EQUIPMENT.....	5
3.1	Test Equipment List.....	5
3.2	Calibration Traceability.....	5
3.3	Measurement Uncertainty.....	5
4.0	REQUIREMENTS, PROCEDURES AND RESULTS.....	6
4.1	Powerline Conducted Emissions.....	6
4.1.1	Receiver.....	6
4.1.1.1	Requirements.....	6
4.1.1.2	Procedures.....	6
4.1.1.3	Results.....	7
4.1.2	Transmitter.....	7
4.1.2.1	Requirements.....	7
4.1.2.2	Procedures.....	8
4.1.2.3	Results.....	8
4.2	Radiated Measurements.....	8
4.2.1	Receiver.....	8
4.2.1.1	Requirements.....	9
4.2.1.2	Procedures.....	9
4.2.1.3	Results.....	10
4.2.2	Transmitters.....	10
4.2.2.1	Requirements.....	10
4.2.2.2	Procedures.....	11
4.2.2.3	Results.....	11
4.3	Occupied Bandwidth Measurements.....	12
4.3.1	Requirement.....	12
4.3.2	Procedures.....	12
4.3.3	Results.....	12
5.0	CONCLUSIONS.....	12
6.0	CERTIFICATION.....	12
7.0	ENDORSEMENT DISCLAIMER.....	12
	TABLE I - EQUIPMENT LIST.....	14

Measurement of RF Emissions from a Transceiver, Model No. PE650

1.0 INTRODUCTION:

1.1 Description of Test Item - This document presents the results of the series of radio interference measurements performed on a Transceiver, Model No. PE650 (hereinafter referred to as the test item). Sample A was assigned to the unit set to continuously receive and Sample B was assigned to the unit set to continuously transmit. The test item was designed to transmit and receive at approximately 908MHz using an external 17cm antenna. The test item was submitted for testing by Delta Mobile Software, Inc. located in Hoffman Estates, IL.

1.2 Purpose - The test series was performed to determine if the test item meets the conducted and radiated RF emission requirements of the FCC "Code of Federal Regulations" Title 47, Part 15, Subpart B, Sections 15.107 and 15.109, and Subpart C, Sections 15.207 and 15.249 for Intentional Radiators Operating within the 902MHz -928MHz band. Testing was performed in accordance with ANSI C63.4-2001.

1.3 Deviations, Additions and Exclusions - There were no deviations, additions to, or exclusions from the test specification during this test series.

1.4 Applicable Documents - The following documents of the exact issue designated form part of this document to the extent specified herein:

- Federal Communications Commission "Code of Federal Regulations", Title 47, Part 15, dated 1 October 2004
- ANSI C63.4-2001, "American National Standard for Methods of Measurement of Radio-Noise Emissions from Low-Voltage Electrical and Electronic Equipment in the Range of 9 kHz to 40 GHz"

1.5 Subcontractor Identification - This series of tests was performed by Elite Electronic Engineering Incorporated of Downers Grove, Illinois. The laboratory is accredited by the National Institute of Standards and Technology (NIST) under the National Voluntary Laboratory Accreditation Program (NVLAP). NVLAP Lab Code: 100278-0.

1.6 Laboratory Conditions The temperature at the time of the test was 21°C and the relative humidity was 48%.

2.0 TEST ITEM SETUP AND OPERATION:

The test item is a Transceiver, Model No. PE650. A block diagram of the test item setup is shown as Figure 1.

2.1 Power Input - The test item was powered with approximately 5VDC. The test item could receive 5VDC in three different configurations:

- 1) The 5VDC could be received via the 8 conductor cable from the Intermatic Electronic Pool-to-Spa Control, M/N: P4243ME
- 2) The 5VDC could be received via the 8 conductor cable from the Intermatic Electronic Time Switch Mechanism, M/N: P1353ME.
- 3) The 5VDC could be received via the 8 conductor cables from both the P423ME and the P1353ME.

The Intermatic Electronic Pool-to-Spa Control, M/N: P4243ME, was powered with 24V, 60Hz via 2 each, 30cm-long unshielded wires from a Basler Electric Class II Transformer, M/N: BE221620RAA. The transformer was powered with 115V, 60Hz via a 2 wire, 1.7 meter-long unshielded power cable. For conducted emissions tests, each AC power lead to the Basler Electric Class II Transformer was connected through a line impedance stabilization network (LISN) which was located on the ground plane. The network complies with the requirements of Paragraph 4.1.2 of ANSI C63.4-2001.

The Intermatic Electronic Time Switch Mechanism, M/N: P1353ME., was powered with 115V, 60Hz via a 2 wire, 1.5 meter-long unshielded power cable. For conducted emissions tests, each AC power lead to the Intermatic Electronic Time Switch Mechanism was connected through a line impedance stabilization network (LISN) which was located on the ground plane. The network complies with the requirements of Paragraph 4.1.2 of ANSI C63.4-2001.

2.2 Grounding - The test item was ungrounded during the tests.

2.3 Peripheral Equipment - The test item was submitted for testing with the following test equipment:

- a) Intermatic Electronic Pool-to-Spa Control, M/N: P4243ME
- b) Intermatic Electronic Time Switch Mechanism, M/N: P1353ME.

2.4 Interconnect Cables - The test item (Sample A), when operating in the continuous receive mode, was connected to the Intermatic Electronic Pool-to-Spa Control, M/N: P4243ME, via a 25cm-long 8 conductor cable and was connected to the Intermatic Electronic Time Switch Mechanism, M/N: P1353ME via a separate 25cm-long 8 conductor cable.

The test item (Sample B), when operating in the continuous transmit mode, was connected to the Intermatic Electronic Pool-to-Spa Control, M/N: P4243ME, via a 12cm-long 8 conductor cable and was connected to the Intermatic Electronic Time Switch Mechanism, M/N: P1353ME via a separate 10cm-long 8 conductor cable.

2.5 Operational Mode - For all tests, the test item and all peripheral equipment were placed on an 80cm high non-conductive stand. The test item and all peripheral equipment were powered up.

For radiated emissions tests, separate sweeps were made with the test item operating in the following



mode:

- Continuously receive at 908.3MHz with the test item powered by both the P423ME and the P1353ME.
- Continuously transmit at 908.4MHz with the test item powered by both the P423ME and the P1353ME.

For conducted emissions tests, separate sweeps were made as follows:

- Intermatic Electronic Pool-to-Spa Control, M/N: P4243ME, without the test item connected
- Intermatic Electronic Pool-to-Spa Control, M/N: P4243ME, with the test item connected and operated in the continuous receive at 908.3MHz
- Intermatic Electronic Pool-to-Spa Control, M/N: P4243ME, with the test item connected and operated in the continuous transmit at 908.4MHz
- Intermatic Electronic Time Switch Mechanism, M/N: P1353ME, without the test item connected
- Intermatic Electronic Time Switch Mechanism, M/N: P1353ME, with the test item connected and operated in the continuous receive at 908.3MHz
- Intermatic Electronic Time Switch Mechanism, M/N: P1353ME, with the test item connected and operated in the continuous transmit at 908.4MHz

2.6 Test Item Modifications - No modifications were required for compliance to the FCC "Code of Federal Regulations" Title 47, Part 15, Subpart B, Sections 15.107 and 15.109, and Subpart C, Sections 15.207 and 15.249 requirements.

3.0 TEST EQUIPMENT:

3.1 Test Equipment List - A list of the test equipment used can be found on Table I. All equipment was calibrated per the instruction manuals supplied by the manufacturer.

3.2 Calibration Traceability Test equipment is maintained and calibrated on a regular basis. All calibrations are traceable to the National Institute of Standards and Technology (NIST).

3.3 Measurement Uncertainty - All measurements are an estimate of their true value. The measurement uncertainty characterizes, with a specified confidence level, the spread of values which may be possible for a given measurement system.

The measurement uncertainty budgets were based on guidelines in "ISO Guide to the Expression of Uncertainty in Measurements" and NAMAS NIS81 "The Treatment of Uncertainty in EMC Measurements".

The measurement uncertainty for these tests is presented below:

Conducted Emission Measurements		
Combined Standard Uncertainty	1.07	-1.07
Expanded Uncertainty (95% confidence)	2.1	-2.1

Radiated Emission Measurements		
Combined Standard Uncertainty	2.26	-2.18
Expanded Uncertainty (95% confidence)	4.5	-4.4

4.0 REQUIREMENTS, PROCEDURES AND RESULTS:

4.1 Powerline Conducted Emissions

4.1.1 Receiver

4.1.1.1 Requirements - Per 15.107(a), all radio frequency voltages on the power lines of a receiver shall be below the values shown below when using a quasi-peak detector:

CONDUCTED LIMITS FOR RECEIVER

Frequency MHz	RFI Voltage dBuV(QP)	RFI Voltage dBuV(Average)
0.15-0.5	66 decreasing with logarithm of frequency to 56	56 decreasing with logarithm of frequency to 46
0.5-5	56	46
5-30	60	50

Note 1: The lower limit shall apply at the transition frequencies.

Note 2: If the levels measured using the QP detector meet both the QP and the Average limits, the test item is considered to have met both requirements and measurements do not need to be performed using the Average detector.

4.1.1.2 Procedures - The interference on each power lead was measured by connecting the measuring equipment to the appropriate meter terminal of the LISN. The meter terminal of the LISN not under test was terminated with 50 ohm. Measurements were first made over the entire frequency range from 150kHz through 30MHz with a peak detector and the results were automatically plotted. The data thus obtained was then searched by the computer for the highest levels. Quasi-peak measurements were automatically performed at the frequencies selected from the highest peak measurements, and the results printed.

4.1.1.3 Results - The plots of the peak preliminary conducted voltage levels on each power line of the Intermatic Electronic Pool-to-Spa Control, M/N: P4243ME, without the test item connected are presented on pages 20 and 21. The conducted limit for receivers is shown as a reference. The final quasi-peak results are presented on pages 22 and 23. As can be seen from the data, all conducted



emission levels met the requirements for receivers.

The plots of the peak preliminary conducted voltage levels on each power line of the Intermatic Electronic Pool-to-Spa Control, M/N: P4243ME, with the test item connected and operated in the continuous receive at 908.3MHz are presented on pages 24 and 25. The conducted limit for receivers is shown as a reference. The final quasi-peak results are presented on pages 26 and 27. As can be seen from the data, all conducted emission levels met the requirements for receivers. Photographs of the test configuration which yielded the highest or worst case, conducted emission levels are shown on Figure 2a.

The plots of the peak preliminary conducted voltage levels on each power line of the Intermatic Electronic Time Switch Mechanism, M/N: P1353ME, without the test item connected are presented on pages 28 and 29. The conducted limit for receivers is shown as a reference. The final quasi-peak results are presented on pages 30 and 31. As can be seen from the data, all conducted emission levels met the requirements for receivers.

The plots of the peak preliminary conducted voltage levels on each power line of the Intermatic Electronic Time Switch Mechanism, M/N: P1353ME, with the test item connected and operated in the continuous receive at 908.3MHz are presented on pages 32 and 33. The conducted limit for receivers is shown as a reference. The final quasi-peak results are presented on pages 34 and 35. As can be seen from the data, all conducted emission levels met the requirements for receivers. Photographs of the test configuration which yielded the highest or worst case, conducted emission levels are shown on Figure 2a.

4.1.2 Transmitter

4.1.2.1 Requirements - Per 15.207(a), all radio frequency voltages on the power lines of a transmitter shall be below the values shown below when using a quasi-peak detector:

CONDUCTED LIMITS FOR INTENTIONAL RADIATOR

Frequency MHz	RFI Voltage dBuV(QP)	RFI Voltage dBuV(Average)
0.15-0.5	66 decreasing with logarithm of frequency to 56	56 decreasing with logarithm of frequency to 46
0.5-5	56	46
5-30	60	50

Note 1: The lower limit shall apply at the transition frequencies.

Note 2: If the levels measured using the QP detector meet both the QP and the Average limits, the test item is considered to have met both requirements and measurements do not need to be performed using the Average detector.

4.1.2.2 Procedures - The interference on each power lead was measured by

connecting the measuring equipment to the appropriate meter terminal of the LISN. The meter terminal of the LISN not under test was terminated with 50 ohm. Measurements were first made over the entire frequency range from 150kHz through 30MHz with a peak detector and the results were automatically plotted. The data thus obtained was then searched by the computer for the highest levels. Quasi-peak measurements were automatically performed at the frequencies selected from the highest peak measurements, and the results printed.

4.1.2.3 Results - The plots of the peak preliminary conducted voltage levels on each power line of the Intermatic Electronic Pool-to-Spa Control, M/N: P4243ME, with the test item connected and operated in the continuous transmit at 908.4MHz are presented on pages 36 and 37. The conducted limit for receivers is shown as a reference. The final quasi-peak results are presented on pages 38 and 39. As can be seen from the data, all conducted emission levels met the requirements for receivers. Photographs of the test configuration which yielded the highest or worst case, conducted emission levels are shown on Figure 2b.

The plots of the peak preliminary conducted voltage levels on each power line of the Intermatic Electronic Time Switch Mechanism, M/N: P1353ME, with the test item connected and operated in the continuous transmit at 908.4MHz are presented on pages 40 and 41. The conducted limit is shown as a reference. The final quasi-peak results are presented on pages 42 and 43. As can be seen from the data, all conducted emission levels met the requirements. Photographs of the test configuration which yielded the highest or worst case, conducted emission levels are shown on Figure 2b.

4.2 Radiated Measurements

4.2.1 Receiver

4.2.1.1 Requirements - - All emanations from a receiver shall be below the levels shown on the following table:

RADIATION LIMITS FOR CLASS B DEVICE

Frequency MHz	Distance between Test Item And Antenna in Meters	Field Strength uV/m	Field Strength dBuV/m
30-88	3	100	40
88-216	3	150	43.5
216-960	3	200	46
Above 960	3	500	54

Note: The tighter limit shall apply at the edge between the two frequency bands.

4.2.1.2 Procedures - All tests were performed in a 32ft. x 20ft. x 18ft. hybrid ferrite-

tile/anechoic absorber lined test chamber. The walls and ceiling of the shielded chamber are lined with ferrite tiles. Anechoic absorber material is installed over the ferrite tile. The floor of the chamber is used as the ground plane. The chamber complies with ANSI C63.4 2001 for site attenuation.

The shielded enclosure prevents emissions from other sources, such as radio and TV stations from interfering with the measurements. All powerlines and signal lines entering the enclosure pass through filters on the enclosure wall. The powerline filters prevent extraneous signals from entering the enclosure on these leads.

Since quasi-peak and average measurements require long integration times, it is not practical to automatically sweep through the quasi-peak or average levels. Therefore, radiated emissions from the test item were first scanned using a peak detector and automatically plotted. The frequencies where significant emission levels were noted were then remeasured using the quasi-peak detector.

For preliminary radiated emissions sweeps from 30MHz to 5GHz, the broadband measuring antenna was positioned at a 3 meter distance from the test item. The frequency range from 30MHz to 5GHz was investigated using a peak detector function with the bilog antenna below 1GHz and the double-ridged waveguide antenna above 1GHz. The maximum levels were plotted.

Final radiated emissions were performed on all significant broadband and narrowband emissions found in the preliminary sweeps using the following methods:

- 1) Measurements below 1GHz were made using a quasi-peak detector and a bilog antenna. Measurements above 1GHz were made using an average detector and a double ridged waveguide antenna.
- 2) To ensure that maximum or worst case, emission levels were measured, the following steps were taken:
 - a) The test item was rotated so that all of its sides were exposed to the receiving antenna.
 - b) Since the measuring antenna is linearly polarized, both horizontal and vertical field components were measured.
 - c) The measuring antenna was raised and lowered from 1 to 4 meters for each antenna polarization to maximize the readings.

4.2.1.3 Results - The preliminary plots are presented on pages 44 and 45. The plots are presented for a reference only, and are not used to determine compliance. The final radiated levels are presented on pages 46. As can be seen from the data, all emissions measured from the test item were within the specification limits for receivers. Photographs of the test configuration which yielded the highest or worst case radiated emission levels are shown on Figure 3a.

4.2.2 Transmitters -



4.2.2.1 Requirements - The test item must comply with the requirements of FCC

"Code of Federal Regulations Title 47", Part 15, Subpart C, Section 15.205 et seq.

Paragraph 15.249(a) has the following radiated emission limits:

Fundamental Frequency MHz	Field Intensity mV/m @ 3 meters	Field Strength Harmonics and Spurious uV/m @ 3 meters
902 to 928	50	500

In addition, emissions appearing in the Restricted Bands of Operation listed in paragraph 15.205(a) shall not exceed the general requirements shown in paragraph 15.209.

4.2.2.2 Procedures - All measurements were performed in a 32ft. x 20ft. x 14ft. high

shielded enclosure. The shielded enclosure prevents emissions from other sources, such as radio and TV stations from interfering with the measurements. All powerlines and signal lines entering the enclosure pass through filters on the enclosure wall. The powerline filters prevent extraneous signals from entering the enclosure on these leads. The floor of the chamber is used as the ground plane. The chamber complies with ANSI C63.4-2001 for site attenuation.

A preliminary radiated emissions test was performed to determine the emission characteristics of the test item. For the preliminary test, a broadband measuring antenna was positioned at a 3 meter distance from the test item. The entire frequency range from 30MHz to 9.1GHz was investigated using a peak detector function. The data was then processed by the computer to calculate equivalent field intensity.

The final emission tests were then manually performed over the frequency range of 30MHz to 9.1GHz. Between 30MHz and 1000MHz, a tuned dipole antenna was used as the pick-up device. A broadband double ridged waveguide antenna was used as the pick-up device for all frequencies above 1GHz. All significant broadband and narrowband signals were measured and recorded.

To ensure that maximum or worst case, emission levels were measured, the following steps were taken:

- (1) The test item was rotated so that all of its sides were exposed to the receiving antenna.
- (2) Since the measuring antenna is linearly polarized, both horizontal and vertical field components were measured.
- (3) The measuring antenna was raised and lowered from 1 to 4 meters for each antenna polarization to maximize the readings.

4.2.2.3 Results - The preliminary plots, with the test item transmitting at 908.4MHz,



are presented on data pages 47 and 48. The plots are presented for a reference only, and are not used to determine compliance. The final radiated levels, with the test item transmitting at 908.4MHz, are presented on data page 49. As can be seen from the data, all emissions measured from the test item were within the specification limits. Photographs of the test configuration which yielded the highest or worst case, radiated emission levels are shown on Figure 3b and Figure 3c.

4.3 Occupied Bandwidth Measurements

4.3.1 Requirement - In accordance with paragraph 15.249(d), all emissions radiated outside of the specified frequency bands, except for harmonics, shall be attenuate by at least 50dB below the level of the fundamental or to the general radiated emissions limits in 15.209, which ever is the lesser attenuation.

4.3.2 Procedures - The test item was placed on an 80cm high non-conductive stand. The unit was set to transmit continuously. With an antenna positioned nearby, occupied bandwidth emissions were displayed on the spectrum analyzer. The resolution bandwidth was set to 100 kHz and span was set to 30 MHz. The frequency spectrum near the fundamental was plotted.

4.3.3 Results - The plot of the emissions near the fundamental frequency is presented on data page 50. As can be seen from this data page, the transmitter met the occupied bandwidth requirements.

5.0 CONCLUSIONS:

It was determined that the Delta Mobile Software, Inc. Transceiver, Model No. PE650, did fully meet the conducted and radiated emission requirements of the FCC "Code of Federal Regulations" Title 47, Part 15, Subpart B, Sections 15.107 and 15.109 for receivers, and Subpart C, Sections 15.207 and 15.249 for Intentional Radiators Operating within the 902MHz -928MHz band, when tested per ANSI C63.4-2001.

6.0 CERTIFICATION:

Elite Electronic Engineering Incorporated certifies that the information contained in this report was obtained under conditions which meet or exceed those specified in the test specifications.

The data presented in this test report pertains to the test item at the test date. Any electrical or mechanical modification made to the test item subsequent to the specified test date will serve to invalidate the data and void this certification.

7.0 ENDORSEMENT DISCLAIMER:

This report must not be used to claim product endorsement by NVLAP or any agency of the US Government.



TABLE I: TEST EQUIPMENT LIST

ELITE ELECTRONIC ENG. INC.							Page: 1	
Eq ID	Equipment Description	Manufacturer	Model No.	Serial No.	Frequency Range	Cal Date	Cal Inv	Due Date
Equipment Type: ACCESSORIES, MISCELLANEOUS								
XZG0	ATTENUATOR/SWITCH DRIVER	HEWLETT PACKARD	11713A	3439A02724	---		N/A	
Equipment Type: AMPLIFIERS								
APK0	PRE-AMPLIFIER	HEWLETT PACKARD	8449B	3008A00662	1-26.5GHZ	02/07/05	12	02/07/06
Equipment Type: ANTENNAS								
NDQ0	TUNED DIPOLE ANTENNA	EMCO	3121C-DB4	311	400-1000MHZ	02/01/05	12	02/01/06
NTA1	BILLOG ANTENNA	CHASE EMC LTD.	BILLOG CBL611	2054	0.03-2GHZ	08/08/05	12	08/08/06
NWH0	RIDGED WAVE GUIDE	TENSOR	4105	2081	1-12.4GHZ	09/05/04	13	10/05/05
Equipment Type: ATTENUATORS								
T1E1	10DB, 25W ATTENUATOR	WEINSCHEL	46-10-43	AU1883	DC-18GHZ	12/02/04	12	12/02/05
Equipment Type: CONTROLLERS								
CDS2	COMPUTER	GATEWAY	MFATXPNT NMZ	0028483108	1.8GHZ		N/A	
CMA0	MULTI-DEVICE CONTROLLER	EMCO	2090	9701-1213	---		N/A	
Equipment Type: PROBES; CLAMP-ON & LISNS								
PLL9	50UH LISN 462D	ELITE	462D/70A	010	0.01-400MHZ	03/04/05	12	03/04/06
PLLA	50UH LISN 462D	ELITE	462D/70A	011	0.01-400MHZ	03/04/05	12	03/04/06
Equipment Type: PRINTERS AND PLOTTERS								
HRE1	LASER JET 5P	HEWLETT PACKARD	C3150A	USHB061052	---		N/A	
Equipment Type: RECEIVERS								
RAC1	SPECTRUM ANALYZER	HEWLETT PACKARD	85660B	3407A08369	100HZ-22GHZ	02/04/05	12	02/04/06
RACB	RF PRESELECTOR	HEWLETT PACKARD	85685A	3506A01491	20HZ-2GHZ	02/07/05	12	02/07/06
RAF3	QUASIPeAK ADAPTER	HEWLETT PACKARD	85650A	3303A01775	0.01-1000MHZ	02/04/05	12	02/04/06

Cal. Interval: Listed in Months I/O: Initial Only N/A: Not Applicable
 Note 1: For the purpose of this test, the equipment was calibrated over the specified frequency range, pulse rate, or modulation prior to the test or monitored by a calibrated instrument.

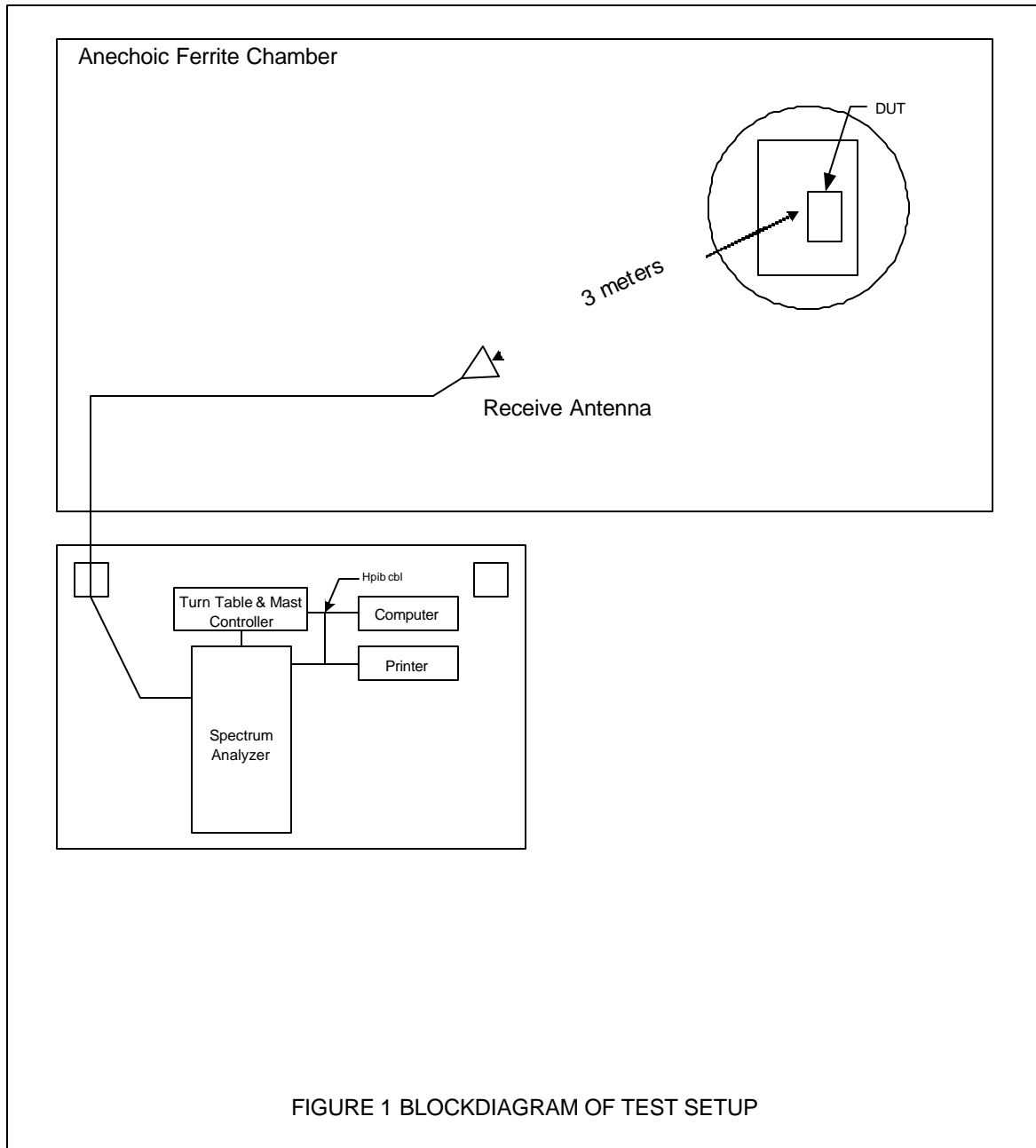


Figure 2a – Receive at 908.3MHz

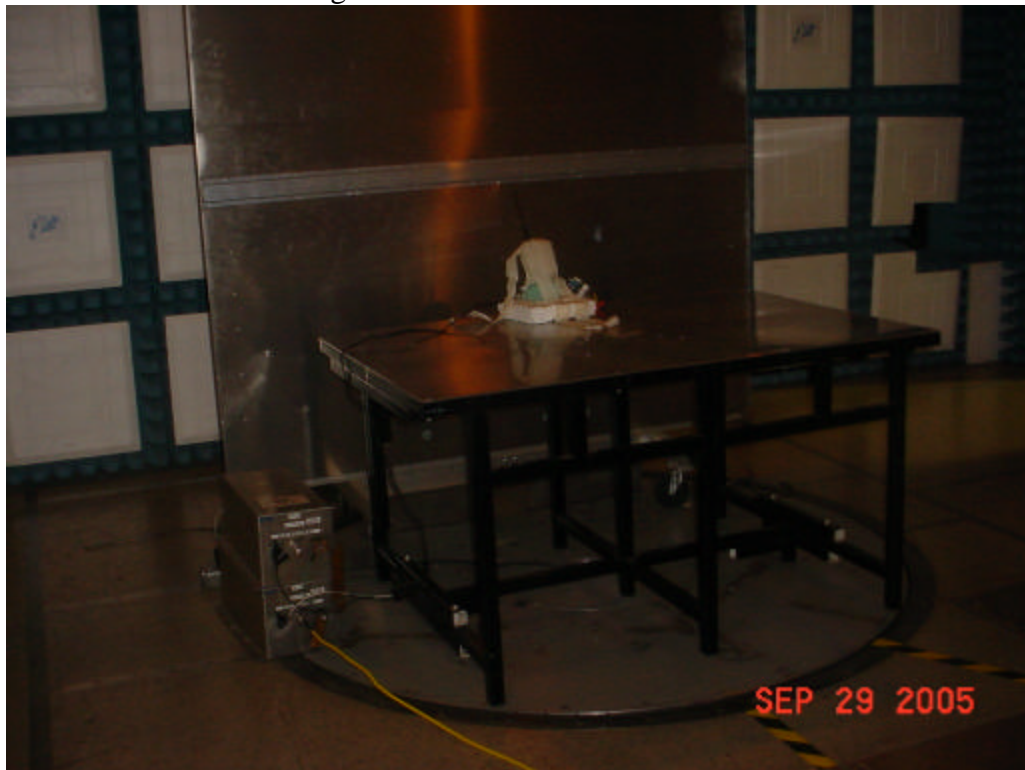


Test Setup for Conducted Emissions – P4243ME



Test Setup for Conducted Emissions – P1353ME

Figure 2b – Transmit at 908.4MHz

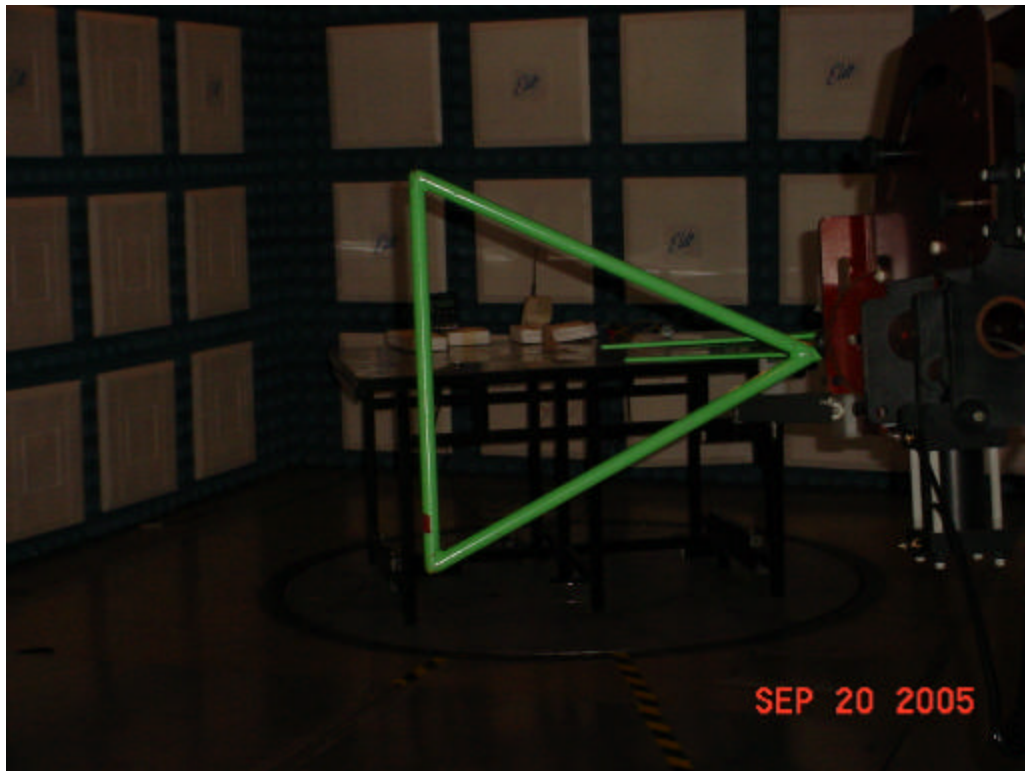


Test Setup for Conducted Emissions – P4243ME

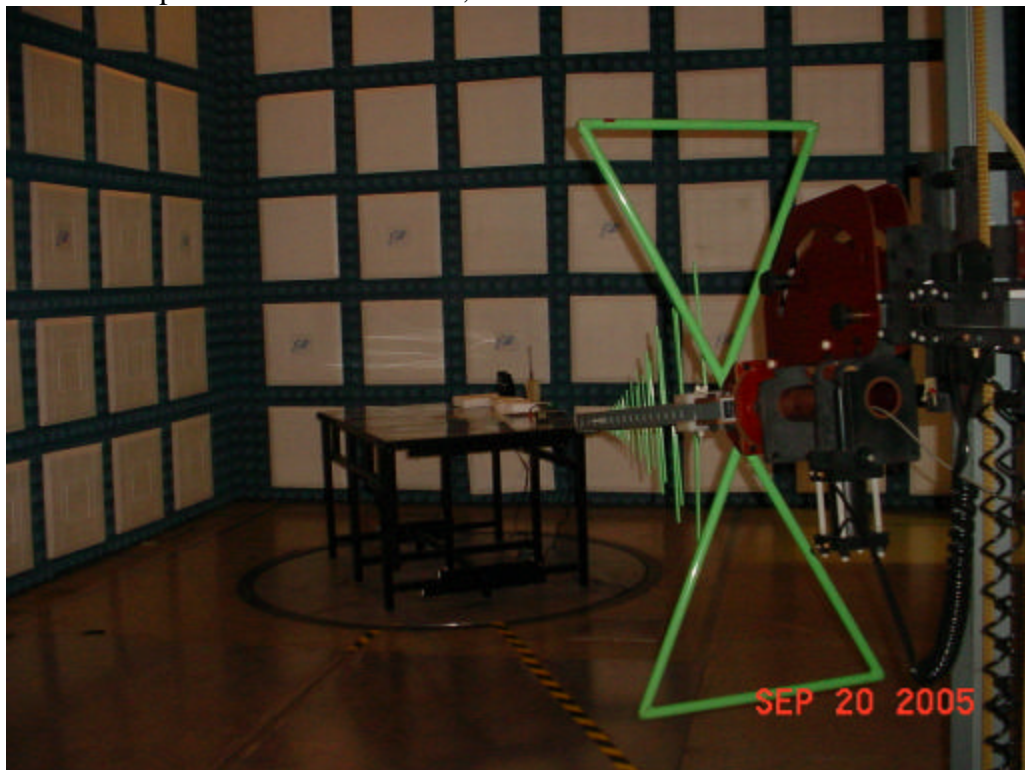


Test Setup for Conducted Emissions – P1353ME

Figure 3a
Receive at 908.3MHz



Test Setup for Radiated Emissions, 30MHz to 1GHz – Horizontal Polarization

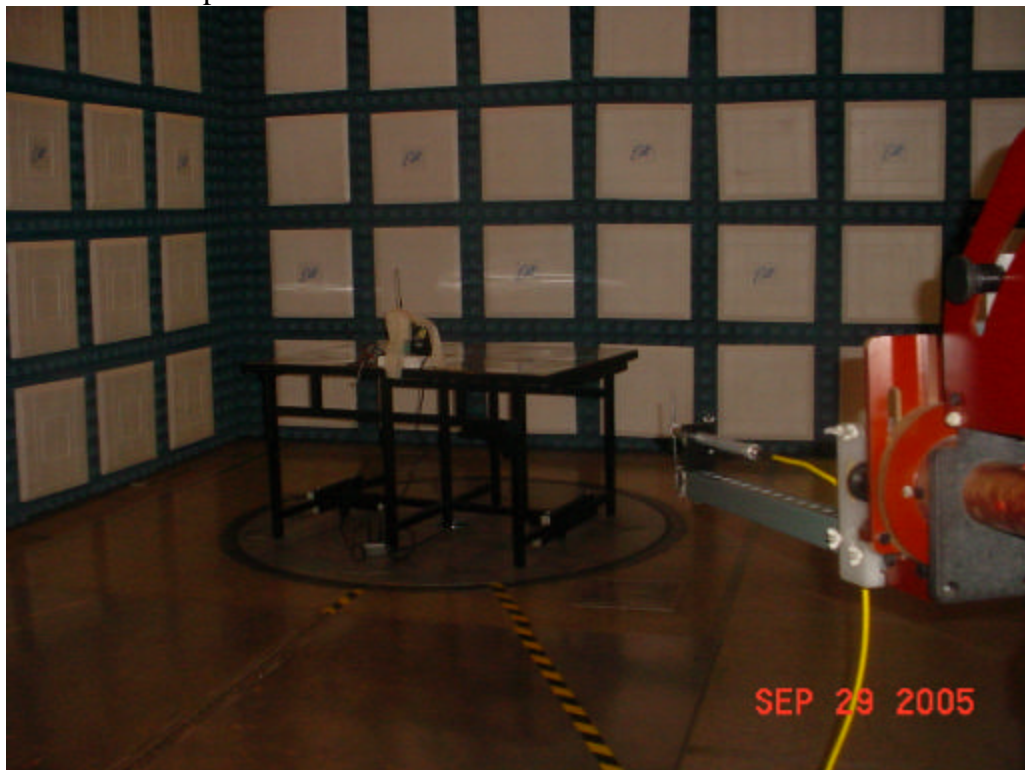


Test Setup for Radiated Emissions, 30MHz to 1GHz – Vertical Polarization

Figure 3b
Transmit at 908.4MHz



Test Setup for Radiated Emissions 908.4MHz – Horizontal Polarization

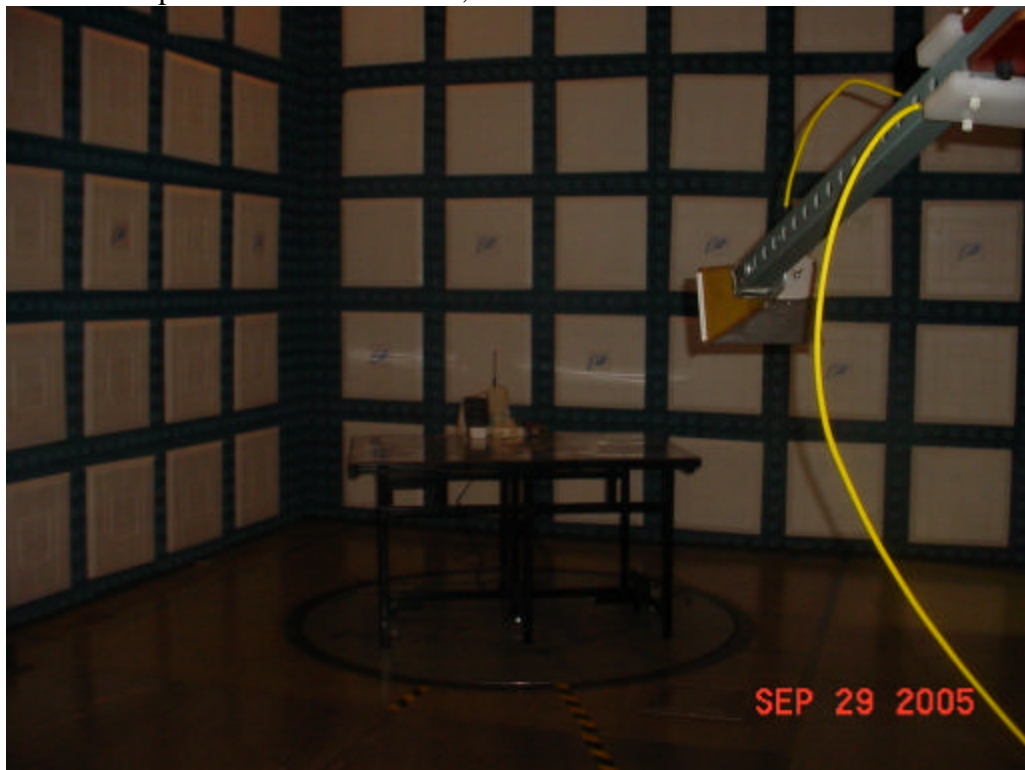


Test Setup for Radiated Emissions 908.4MHz – Vertical Polarization

Figure 3c
Transmit at 908.4MHz



Test Setup for Radiated Emissions, 1GHz to 9.1GHz – Horizontal Polarization

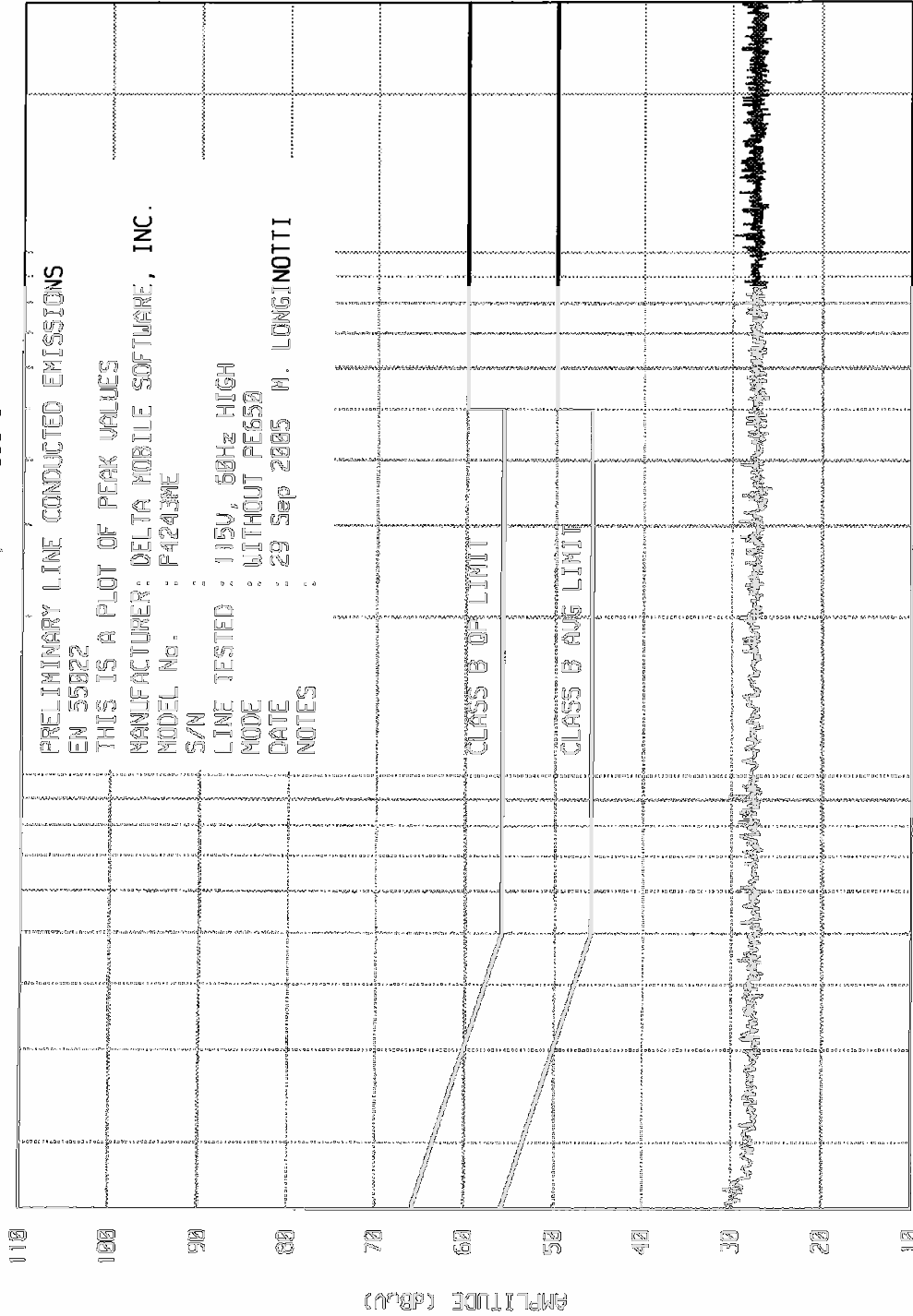


Test Setup for Radiated Emissions, 1GHz to 9.1GHz – Vertical Polarization

8566

ELITE ELECTRONIC ENGINEERING INC.
 Owners Grove, Ill. 60515

PRELIMINARY LINE CONDUCTED EMISSIONS
 EM 55022
 THIS IS A PLOT OF PEAK VALUES
 MANUFACTURER: DELTA MOBILE SOFTWARE, INC.
 MODEL No. : F4243ME
 S/N :
 LINE TESTED : 115V, 60Hz HIGH
 MODE : WITHOUT PE65A
 DATE : 29 Sep 2005 M. LONGINOTTI
 NOTES :

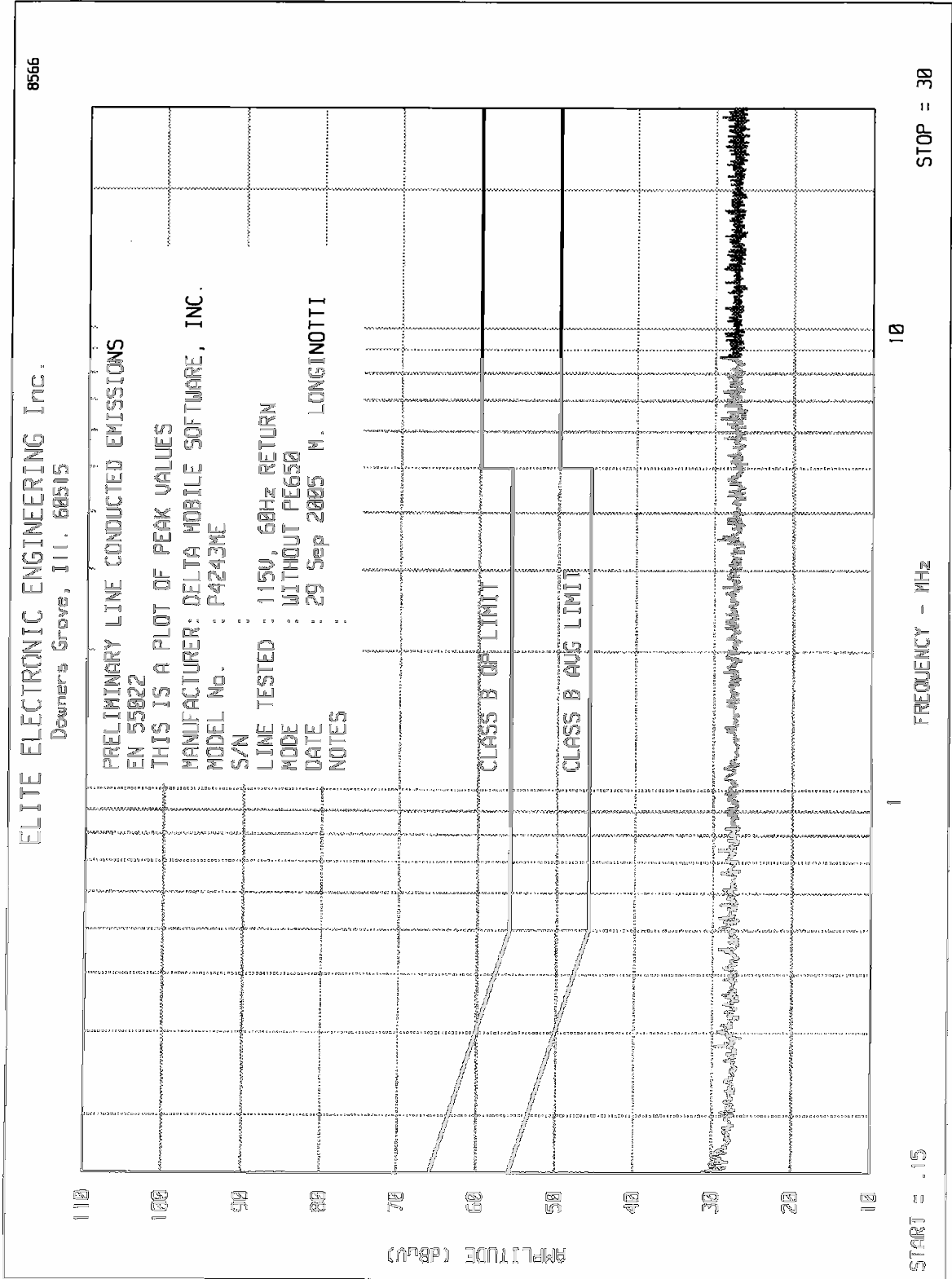


STOP = 30

10

FREQUENCY - MHz

START = -15





ETR No.
ELITE ELECTRONIC ENGINEERING CO.

MANUFACTURER : DELTA MOBILE SOFTWARE, INC.
MODEL : P4243ME
S/N :
SPECIFICATION : EN 55022, CLASS B
TEST : LINE CONDUCTED EMISSIONS
LINE TESTED : 115V, 60Hz HIGH
MODE : WITHOUT PE650
DATE : 29 Sep 2005
NOTES :
RECEIVER : HP 8566 w/ HP85650A QP ADAPTOR
VALUES MEASURED WITH QP DETECTOR USING 9kHz BANDWIDTH

FREQUENCY MHz	METER RDG. dBuV	QP LIMIT dBuV	AVG RDG dBuV	AVG LIMIT dBuV	NOTES
.305	27.3	60.1		50.1	
.805	26.3	56.0		45.0	
1.518	26.0	56.0		45.0	
2.947	26.0	56.0		45.0	
4.684	26.0	56.0		46.0	
6.947	25.6	60.0		50.0	
8.743	25.6	60.0		50.0	
10.713	25.4	60.0		50.0	
13.813	25.4	60.0		50.0	
17.563	25.4	60.0		50.0	
22.168	25.4	60.0		50.0	
24.273	25.4	60.0		50.0	
26.753	25.6	60.0		50.0	

CHECKED BY: Mark E Longino
M. LONGINO

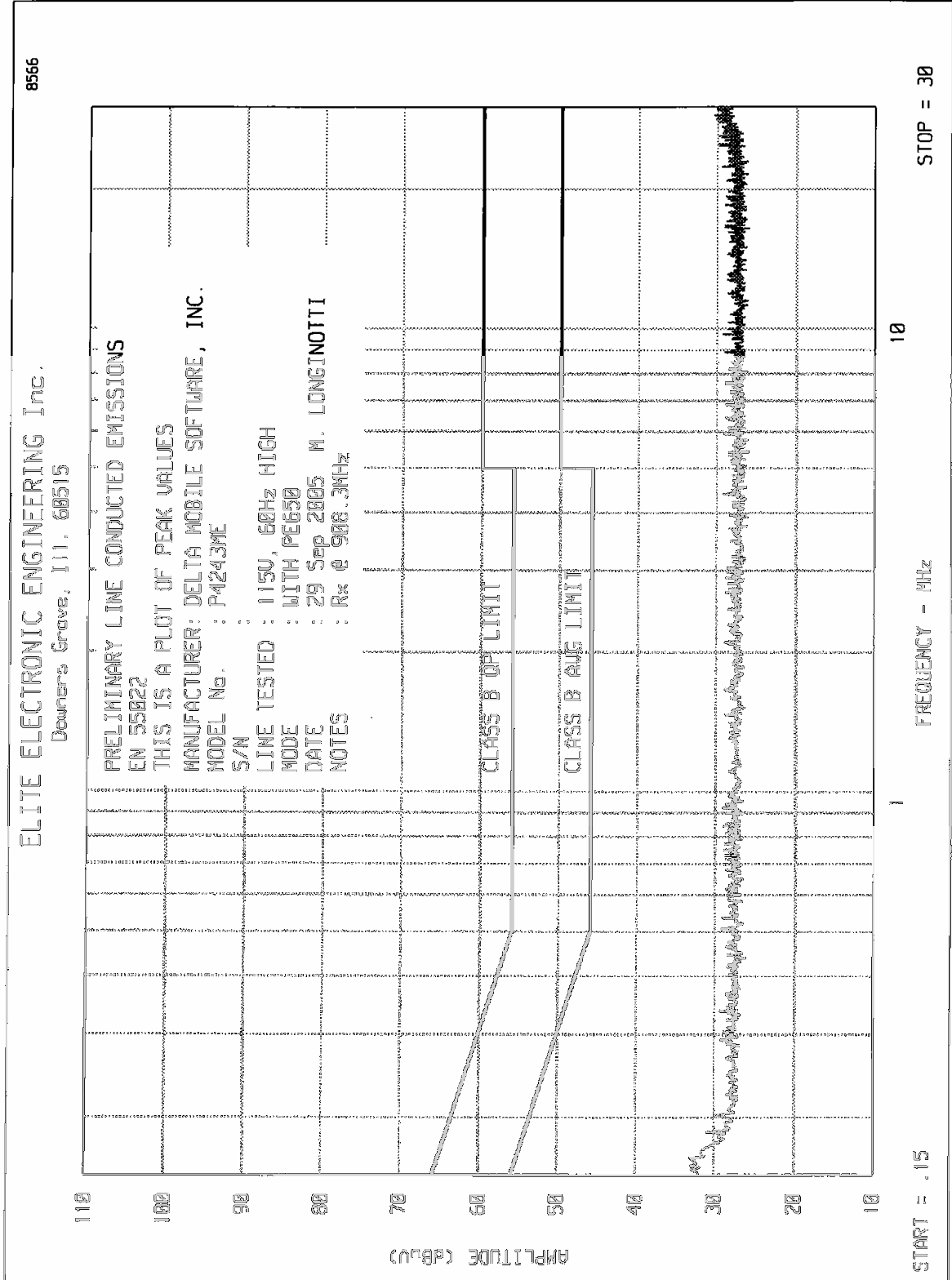


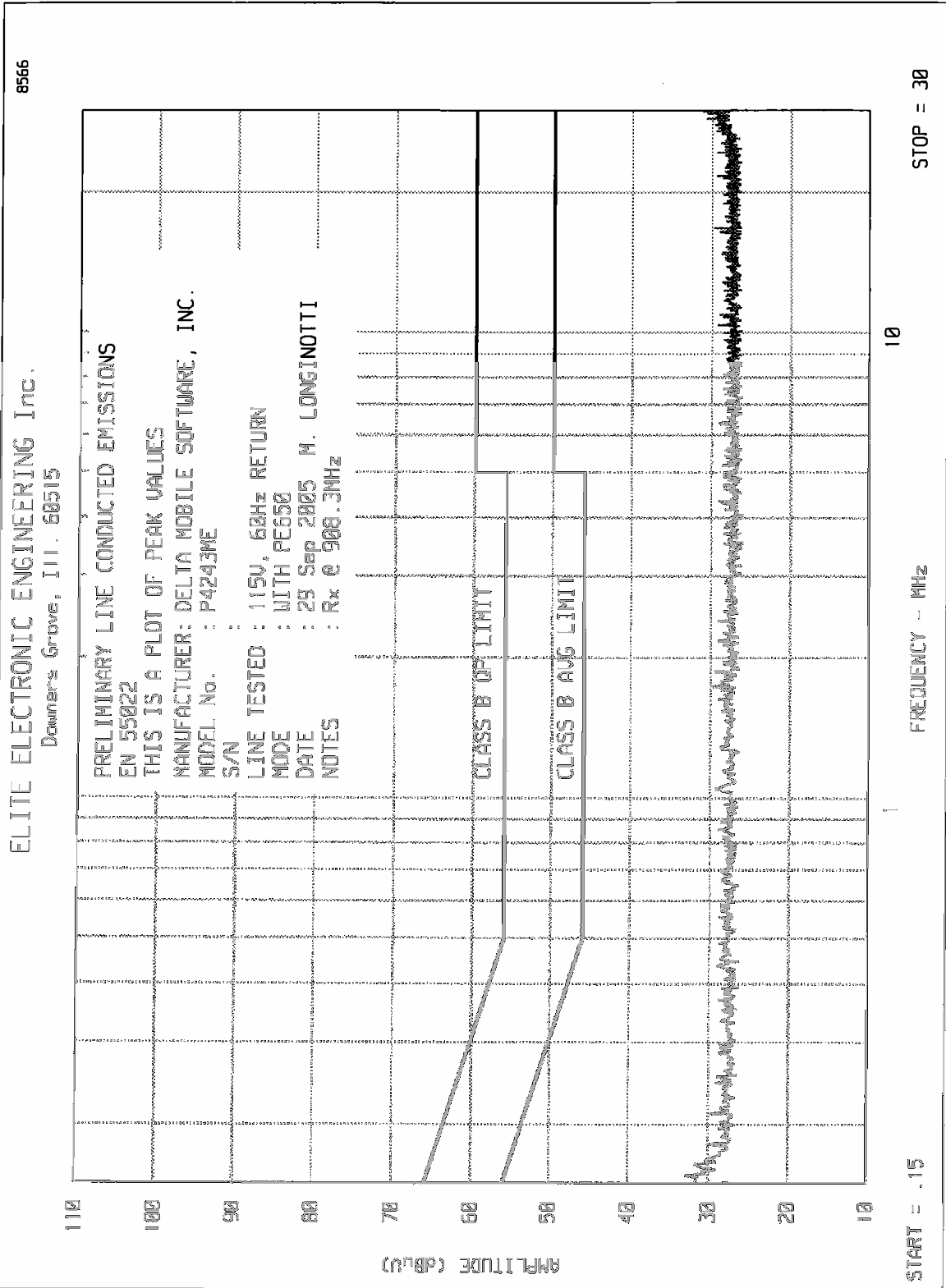
ETR No.
ELITE ELECTRONIC ENGINEERING CO.

MANUFACTURER : DELTA MOBILE SOFTWARE, INC.
MODEL : P4243ME
S/N :
SPECIFICATION : EN 55022, CLASS B
TEST : LINE CONDUCTED EMISSIONS
LINE TESTED : 115V, 60Hz RETURN
MODE : WITHOUT PE650
DATE : 29 Sep 2005
NOTES :
RECEIVER : HP 8566 w/ HP85650A QP ADAPTOR
VALUES MEASURED WITH QP DETECTOR USING 9kHz BANDWIDTH

FREQUENCY MHz	METER RDG. dBuV	QP LIMIT dBuV	AVG RDG dBuV	AVG LIMIT dBuV	NOTES
.326	27.5	59.6		49.6	
.573	26.3	56.0		46.0	
.818	26.0	56.0		46.0	
1.968	25.9	56.0		46.0	
3.224	25.9	56.0		46.0	
4.796	26.0	56.0		46.0	
6.367	25.4	60.0		50.0	
8.855	25.4	60.0		50.0	
12.573	25.6	60.0		50.0	
15.168	25.6	60.0		50.0	
18.513	25.4	60.0		50.0	
22.142	25.4	60.0		50.0	
24.788	25.4	60.0		50.0	
27.413	25.4	60.0		50.0	

CHECKED BY: Mark E Longinotti
M. LONGINOTTI







ETR No.
ELITE ELECTRONIC ENGINEERING CO.

MANUFACTURER : DELTA MOBILE SOFTWARE, INC.
MODEL : P4243ME
S/N :
SPECIFICATION : EN 55022, CLASS B
TEST : LINE CONDUCTED EMISSIONS
LINE TESTED : 115V, 60Hz HIGH
MODE : WITH PE650
DATE : 29 Sep 2005
NOTES : Rx @ 908.3MHz
RECEIVER : HP 8566 w/ HP85650A QP ADAPTOR
VALUES MEASURED WITH QP DETECTOR USING 9kHz BANDWIDTH

FREQUENCY MHz	METER RDG. dBuV	QP LIMIT dBuV	AVG RDG dBuV	AVG LIMIT dBuV	NOTES
.356	27.1	58.8		48.8	
.497	25.9	56.1		46.1	
.911	26.2	56.0		46.0	
2.092	25.9	56.0		46.0	
3.005	25.9	56.0		46.0	
5.714	25.6	60.0		50.0	
7.587	25.4	60.0		50.0	
9.675	25.4	60.0		50.0	
12.713	25.6	60.0		50.0	
16.518	25.7	60.0		50.0	
18.047	25.4	60.0		50.0	
20.873	25.6	60.0		50.0	
24.699	25.7	60.0		50.0	
28.203	26.3	60.0		50.0	

CHECKED BY: Mark E. Longino
M. LONGINO