

**ALPHA 9500 HF Power Amplifier
Test Report for Grant of Certification for
Use in Part 97 Amateur Service under the
Rules of the
Federal Communications Commission**

DGVPA-77DF

February 23, 2010

**Submitted by:
RF Concepts, LLC.
6185 Arapahoe Road
Boulder, CO 80303
Voice: 303.473.9232**



VP of Engineering Gordon Hardman
Test Engineer Mike Higgins

**Preliminary
Ver. 1.16B (Photos)**

Table of Contents

APPENDIX G – DETAILED PHOTOS OF EQUIPMENT	19
--	-----------

Appendix G – Detailed Photos of Equipment



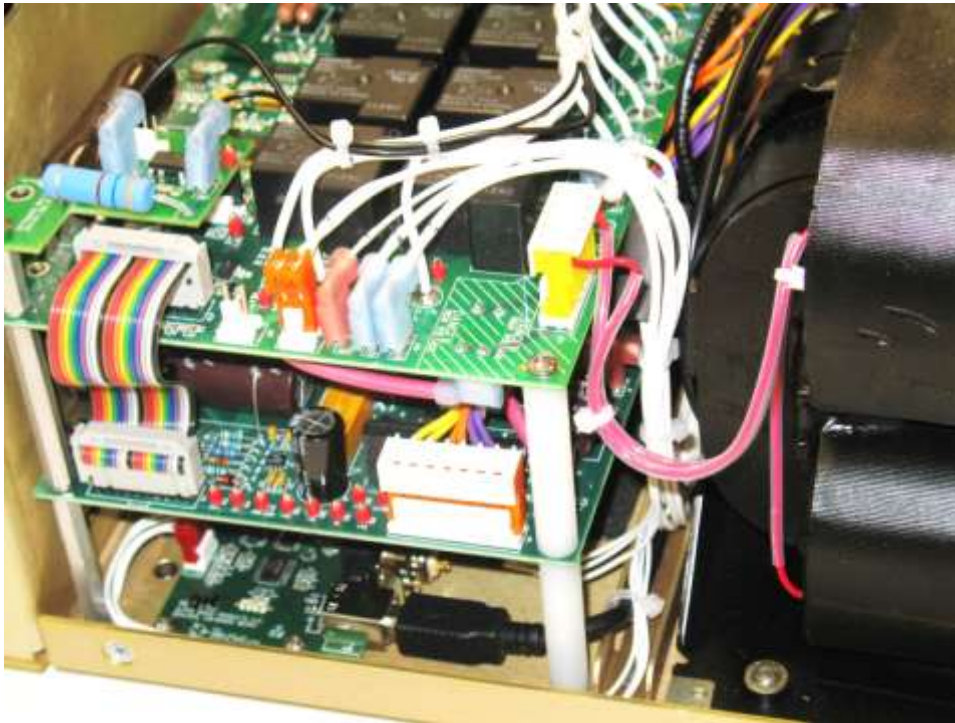
Front of the 9500 Amplifier, Cover Off



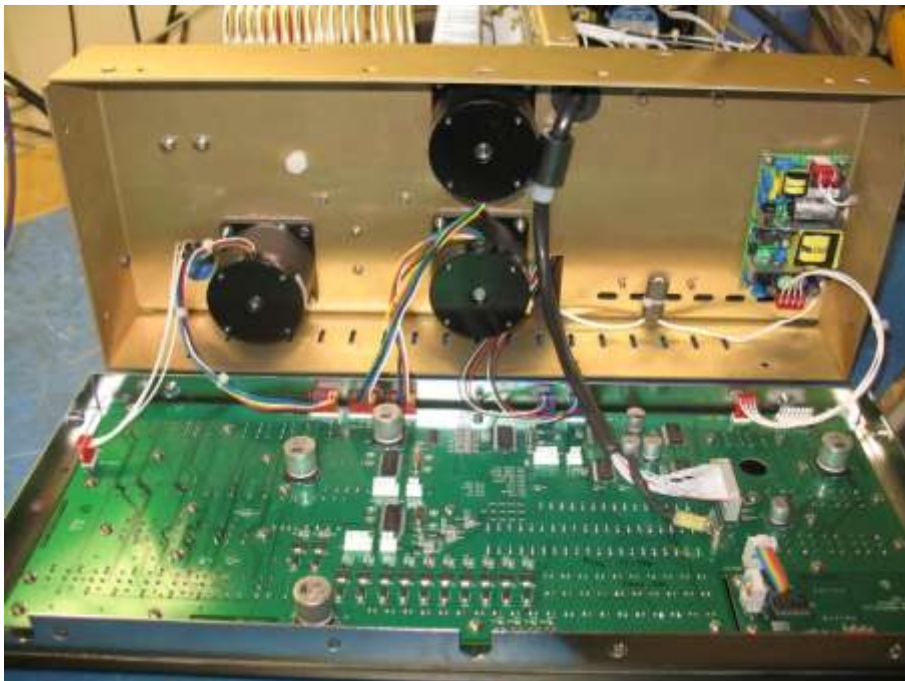
Power Supply Side of the Amplifier With Transformer Right Side.



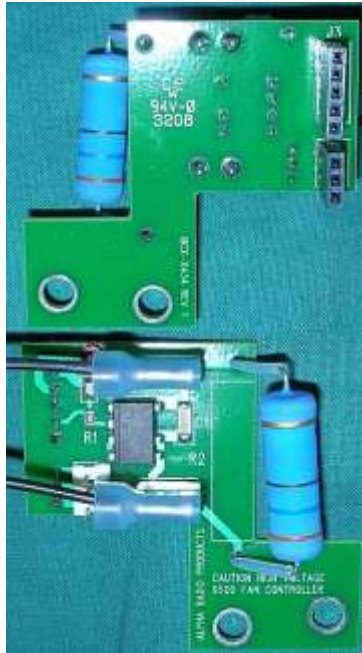
RF Tank and Tube Side of the Amplifier Left Side



High Voltage Power Supply, AC Tap Selection PCB's



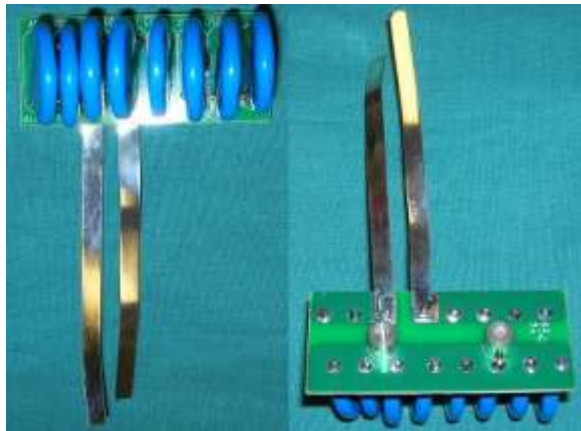
Stepper Motor Controllers and 5 Volt Power Supply



Fan Controller



Five Volt Power Supply Board



Tank Circuit Padder Caps



High Voltage Filter Board



Digital Display Board

High Voltage Board



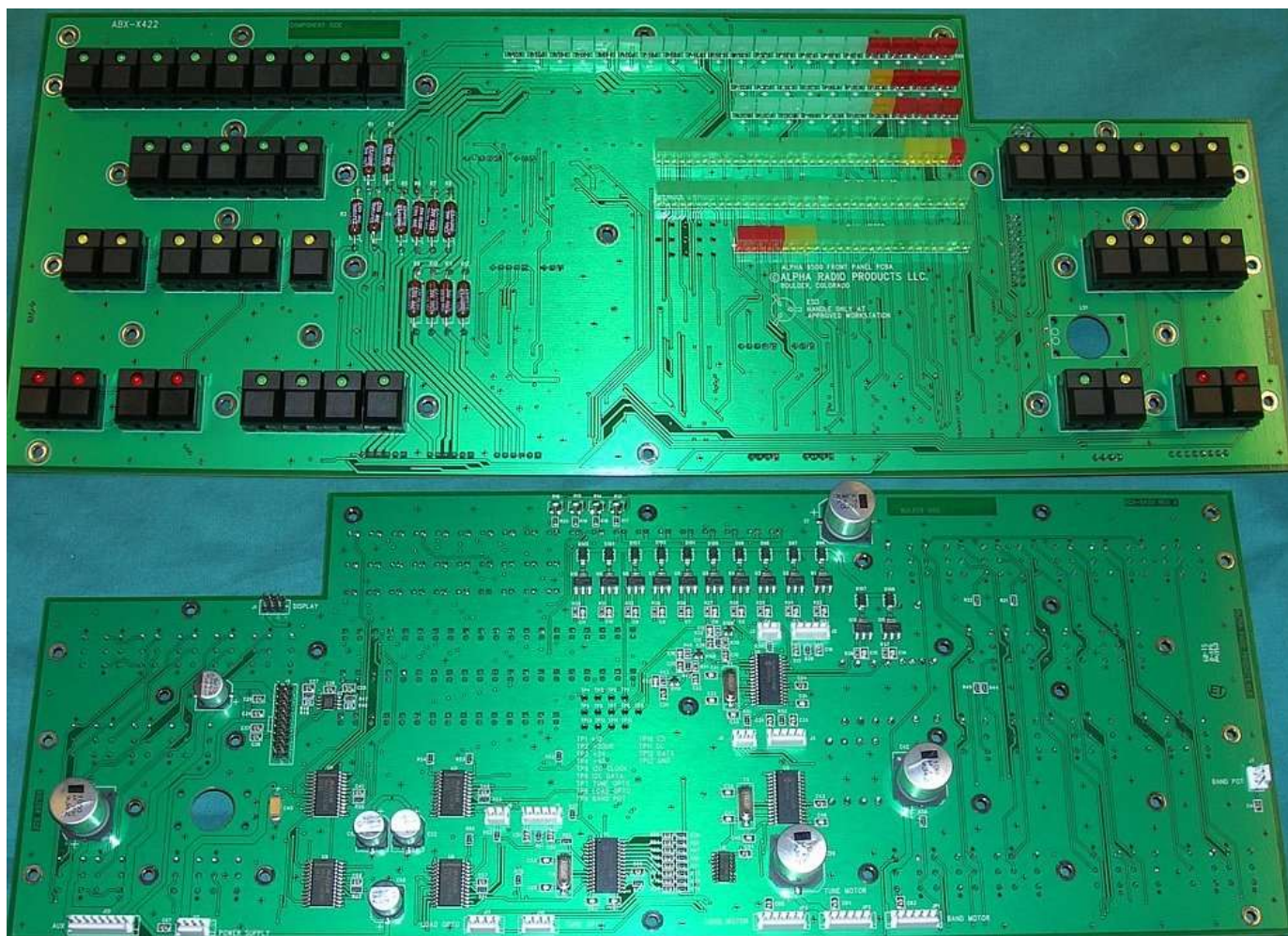
AC Input Switch Mains Board



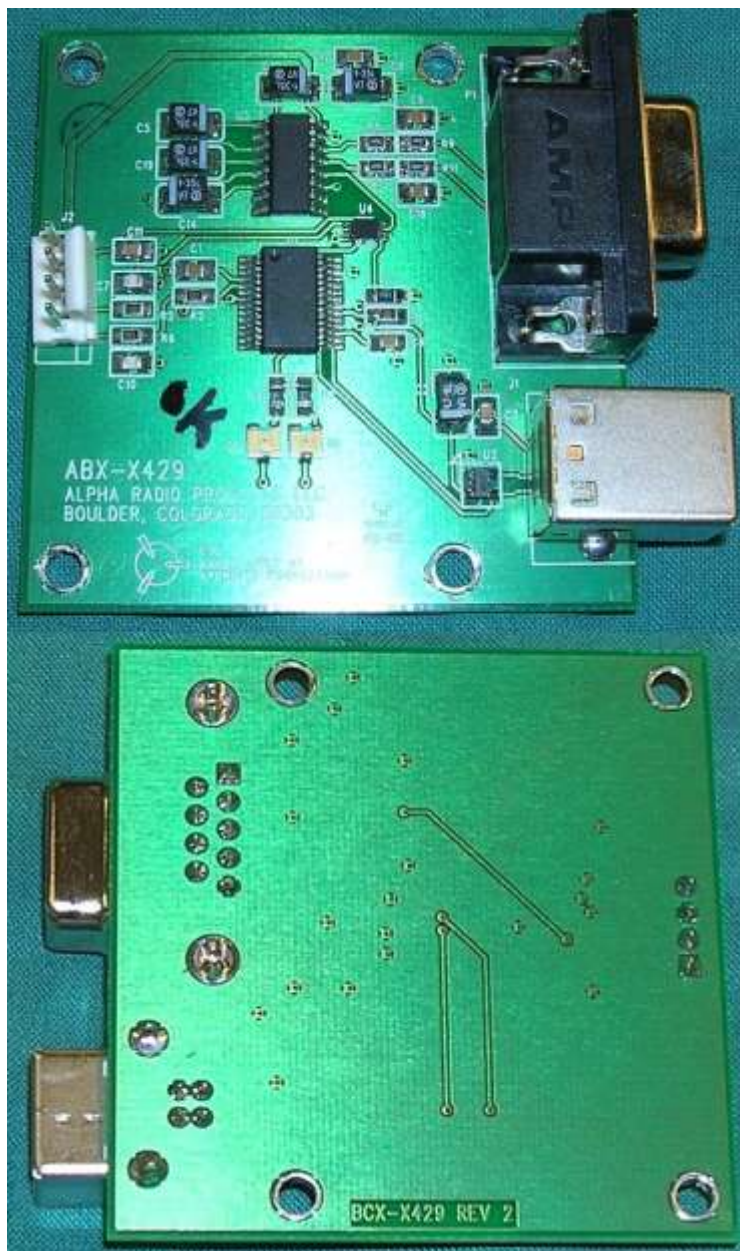
Main Controller Board



Input Filter Board



Front Display Board



USB Board

Rear View of the Amplifier



The following photos will need to be submitted with the application:

FCC ID Label Information
Front View looking back
Front Panel LED board
Rear of LED Panel Board
Analog Power Supply Side
Analog Power side with Transformer
Back Half RF Section

ID Label/Location
Internal Photo
Internal Photo
Internal Photo
Internal Photo
Internal Photo
Internal Photo

Tune and load Caps and band switch section
Top with cover removed
Tube deck assembly
Stepper Motors
Microprocessor PCB
LED PCB
RF Antenna Switching Deck & Master Controller
Mains Controller

All Schematics
User Manual

Internal Photo
Internal Photo
Internal Photo
Internal Photo
Internal Photo
Internal Photo
Internal Photo
Internal Photo

Manual
Manual