



**Specific Absorption Rate (SAR) Test Report**  
for  
**Inventec Corporation**  
on the  
**PDA Phone**

Report No. : FA6N2811-3-2-01  
Trade Name : Opticon  
Model Name : H-16A, H-16B  
FCC ID : DGIBC0129AAA190  
Date of Testing : Dec. 25~27, 2006 and Jan. 02~03, 2007  
Date of Report : Jan. 08, 2007  
Date of Review : Jan. 08, 2007

- The test results refer exclusively to the presented test model/sample only.
- Without written approval of SPORTON International Inc., the test report shall not be reproduced except in full.
- Report Version: Rev.01.

***SPORTON International Inc.***

6F, No.106, Sec. 1, Hsin Tai Wu Rd., Hsi Chih, Taipei Hsien, Taiwan, R.O.C.



## **Table of Contents**

<b>1. Statement of Compliance</b>	<b>1</b>
<b>2. Administration Data</b>	<b>2</b>
2.1 Testing Laboratory	2
2.2 Detail of Applicant	2
2.3 Detail of Manufacturer	2
2.4 2.4 Application Detail	2
<b>3. General Information</b>	<b>3</b>
3.1 Description of Device Under Test (DUT)	3
3.2 Product Photo	4
3.3 Applied Standards:	6
3.4 Device Category and SAR Limits	7
3.5 Test Conditions:	7
3.5.1 Ambient Condition	7
3.5.2 Test Configuration	7
<b>4. Specific Absorption Rate (SAR)</b>	<b>8</b>
4.1 Introduction	8
4.2 SAR Definition	8
<b>5. SAR Measurement Setup</b>	<b>9</b>
5.1 DASY4 E-Field Probe System	10
5.1.1 ET3DV6 E-Field Probe Specification	11
5.1.2 ET3DV6 E-Field Probe Calibration	11
5.2 DATA Acquisition Electronics (DAE)	12
5.3 Robot	13
5.4 Measurement Server	13
5.5 SAM Twin Phantom	13
5.6 Device Holder for SAM Twin Phantom	15
5.7 Data Storage and Evaluation	16
5.7.1 Data Storage	16
5.7.2 Data Evaluation	16
5.8 Test Equipment List	19
<b>6. Tissue Simulating Liquids</b>	<b>20</b>
<b>7. Uncertainty Assessment</b>	<b>22</b>
<b>8. SAR Measurement Evaluation</b>	<b>24</b>
8.1 Purpose of System Performance check	24
8.2 System Setup	24
8.3 Validation Results	26
<b>9. Description for DUT Testing Position</b>	<b>27</b>
<b>10. Measurement Procedures</b>	<b>33</b>
10.1 Spatial Peak SAR Evaluation	33
10.2 Scan Procedures	34
10.3 SAR Averaged Methods	34
<b>11. SAR Test Results</b>	<b>35</b>
11.1 Right Cheek	35
11.2 Right Tilted	35
11.3 Left Cheek	36
11.4 Left Tilted	36
11.5 Keypad Up with 1.5cm Gap	37
11.6 Keypad Down with 1.5cm Gap	38
<b>12. References</b>	<b>40</b>

Appendix A - System Performance Check Data

Appendix B - SAR Measurement Data

Appendix C - Calibration Data



### **1. Statement of Compliance**

The Specific Absorption Rate (SAR) maximum results found during testing for the **Inventec Corporation PDA Phone Opticon H-16A, H-16B** are as follows (with expanded uncertainty 20.6%) :

	<b>GSM850 head (W/Kg)</b>	<b>GSM850 body (W/Kg)</b>	<b>PCS1900 head (W/Kg)</b>	<b>PCS1900 body (W/Kg)</b>
<b>DUT with Scanner 1</b>	<b>0.35</b>	<b>0.597</b>	<b>0.348</b>	<b>0.162</b>
<b>DUT with Scanner 2</b>	<b>0.605</b>	<b>0.863</b>	<b>0.32</b>	<b>0.147</b>

The co-location of GSM/GPRS, WLAN and Bluetooth were also checked. They are in compliance with Specific Absorption Rate (SAR) for general population/uncontrolled exposure limits specified in FCC 47 CFR part 2 (2.1093) and ANSI/IEEE C95.1-1999 and had been tested in accordance with the measurement methods and procedures specified in OET Bulletin 65 Supplement C (Edition 01-01).

Approved by

Dr. Daniel Lee  
EMC/SAR Director



## **2. Administration Data**

### **2.1 Testing Laboratory**

**Company Name :** Sporton International Inc.  
**Department :** Antenna Design/SAR  
**Address :** No.52, Hwa-Ya 1<sup>st</sup> RD., Hwa Ya Technology Park, Kwei-Shan Hsiang, TaoYuan Hsien, Taiwan, R.O.C.  
**Telephone Number :** 886-3-327-3456  
**Fax Number :** 886-3-327-0973

### **2.2 Detail of Applicant**

**Company Name :** Inventec Corporation  
**Address :** Inventec Building, 66 Hou-Kang Street, Shih-Lin District, Taipei 11170, Taiwan  
**Telephone Number :** 886-2-2881-0721 / 7235  
**Fax Number :** 886-2-2897-6687

### **2.3 Detail of Manufacturer**

**Company Name :** Inventec Corporation  
**Address :** Inventec Building, 66 Hou-Kang Street, Shih-Lin District, Taipei 11170, Taiwan

### **2.4 Application Detail**

**Date of reception of application:** Nov. 28, 2006  
**Start of test :** Dec. 25, 2006  
**End of test :** Jan. 03, 2007



### 3. General Information

#### 3.1 Description of Device Under Test (DUT)

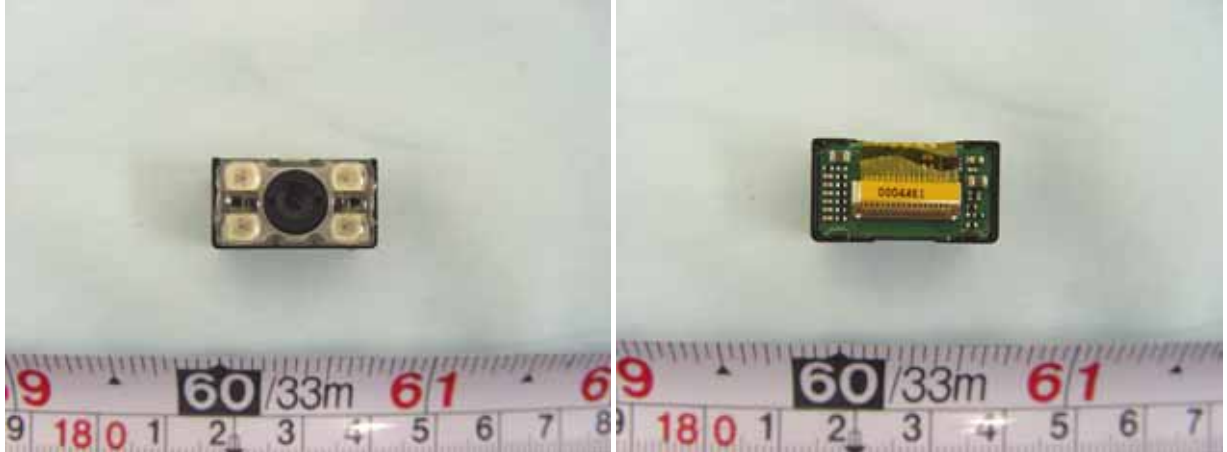
DUT Type :	PDA Phone
Trade Name :	Opticon
Model Name :	H-16A, H-16B
FCC ID :	DGIBC0129AAA190
Tx Frequency :	GSM850 : 824 ~ 849 MHz PCS1900 : 1850 ~ 1910 MHz Bluetooth : 2400 ~ 2483.5 MHz WLAN : 2400 ~ 2483.5 MHz
Rx Frequency :	GSM850 : 869 ~ 894 MHz PCS1900 : 1930 ~ 1990 MHz Bluetooth : 2400 ~ 2483.5 MHz WLAN : 2400 ~ 2483.5 MHz
Number of Channels :	Bluetooth : 79 WLAN : 11
Carrier Frequency of Each Channel :	Bluetooth : $2402+n*1$ MHz; $n=0\sim78$ WLAN : $2412+(n-1)*5$ MHz; $n=1\sim11$
Antenna Type :	GSM850 : Fixed Internal PCS1900 : Fixed Internal Bluetooth : Chip Antenna WLAN : PIFA Antenna
Antenna Connector :	N/A
Antenna Gain :	Bluetooth : 0 dBi 802.11b / 802.11g : 0 dBi
Maximum Output Power to Antenna :	32.13 dBm(GSM) ; 32.06 dBm(GPRS8) ; 30.29 dBm(GPRS10) ; GSM850 : 26.7 dBm(GPRS12) ; 26 dBm(EGPRS8) ; 23.8 dBm(EGPRS10) ; 19.5 dBm(EGPRS12) 29.26 dBm(GSM) ; 29.25 dBm(GPRS8) ; 27.39 dBm(GPRS10) ; PCS1900 : 23.8 dBm(GPRS12) ; 25.5 dBm(EGPRS8) ; 23.4 dBm(EGPRS10) ; 19.3 dBm(EGPRS12) 802.11b : 14.6 dBm / 802.11g: 15.3 dBm
Type of Modulation :	GSM/GPRS : GMSK EGPRS : 8PSK Bluetooth : GFSK 802.11b / 802.11g : DSSS / OFDM
HW Version :	1.0
SW Version :	1.0
DUT Stage :	Identical Prototype
Power Rating :	DC 4.2V / 1440mA
Accessory :	Battery : OPTICON, H-16 Scanner 1 : OPTOELECTRONICS, MDI-1000 Scanner 2 : OPTOELECTRONICS, MDL-2000
Application Type :	Certification

### 3.2 Product Photo

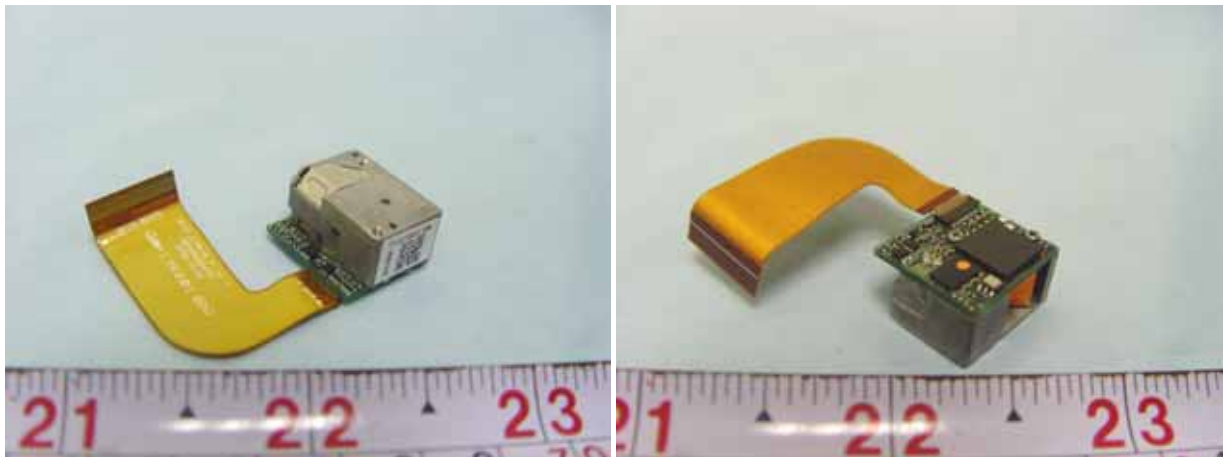




**Scanner 1**



**Scanner 2**





---

### **3.3 Applied Standards:**

The Specific Absorption Rate (SAR) testing specification, method and procedure for this PDA Phone is in accordance with the following standards:

47 CFR Part 2 ( 2.1093),  
IEEE C95.1-1999,  
IEEE C95.3-2002,  
IEEE P1528-2003, and  
OET Bulletin 65 Supplement C (Edition 01-01)





### **3.4 Device Category and SAR Limits**

This device belongs to portable device category because its radiating structure is allowed to be used within 20 centimeters of the body of the user.

Limit for General Population/Uncontrolled exposure should be applied for this device, it is 1.6 W/kg as averaged over any 1 gram of tissue.

### **3.5 Test Conditions:**

#### **3.5.1 Ambient Condition**

Item	HSL_850 Dec. 25, 2006	MSL_850 Dec. 27, 2006	HSL_1900 Dec. 26, 2006	MSL_1900 Dec. 27, 2006
Ambient Temperature (°C)	20-24			
Tissue simulating liquid temperature (°C)	21.1	21.1	21.0	20.9
Humidity (%)	<60			
Item	HSL_850 Jan. 02, 2007	MSL_850 Jan. 03, 2007	HSL_1900 Jan. 02, 2007	MSL_1900 Jan. 03, 2007
Ambient Temperature (°C)	20-24			
Tissue simulating liquid temperature (°C)	20.4	20.4	20.6	20.5
Humidity (%)	<60			

#### **3.5.2 Test Configuration**

The device was controlled by using a base station emulator R&S CMU200. Communication between the device and the emulator was established by air link. The distance between the DUT and the antenna of the emulator is larger than 50 cm and the output power radiated from the emulator antenna is at least 30 dB smaller than the output power of DUT.

Measurements were performed on the lowest, middle, and highest channel for each testing position for head SAR testing. Measurements were performed only on the middle channel if the SAR is below 3 dB of limit for body SAR testing.

The DUT was set from the emulator to radiate maximum output power during all testings.

For head SAR testing, EUT is in GSM link mode, and its crest factor is 8.3. For body SAR testing, EUT is in GPRS/EGPRS link mode, and its crest factor is 4 because EUT is GPRS/EGPRS class 10 device.



## 4. Specific Absorption Rate (SAR)

### 4.1 Introduction

SAR is related to the rate at which energy is absorbed per unit mass in an object exposed to a radio field. The SAR distribution in a biological body is complicated and is usually carried out by experimental techniques or numerical modeling. The standard recommends limits for two tiers of groups, occupational/controlled and general population/uncontrolled, based on a person's awareness and ability to exercise control over his or her exposure. In general, occupational/controlled exposure limits are higher than the limits for general population/uncontrolled.

### 4.2 SAR Definition

The SAR definition is the time derivative (rate) of the incremental energy (dW) absorbed by (dissipated in) an incremental mass (dm) contained in a volume element (dv) of a given density.

). The equation description is as below:

$$\mathbf{SAR} = \frac{d}{dt} \left( \frac{dW}{dm} \right) = \frac{d}{dt} \left( \frac{dW}{\rho dv} \right)$$

*SAR is expressed in units of Watts per kilogram (W/kg)*

SAR measurement can be either related to the temperature elevation in tissue by

$$\mathbf{SAR} = C \frac{\delta T}{\delta t}$$

, where C is the specific heat capacity,  $\delta T$  is the temperature rise and  $\delta t$  the exposure duration,

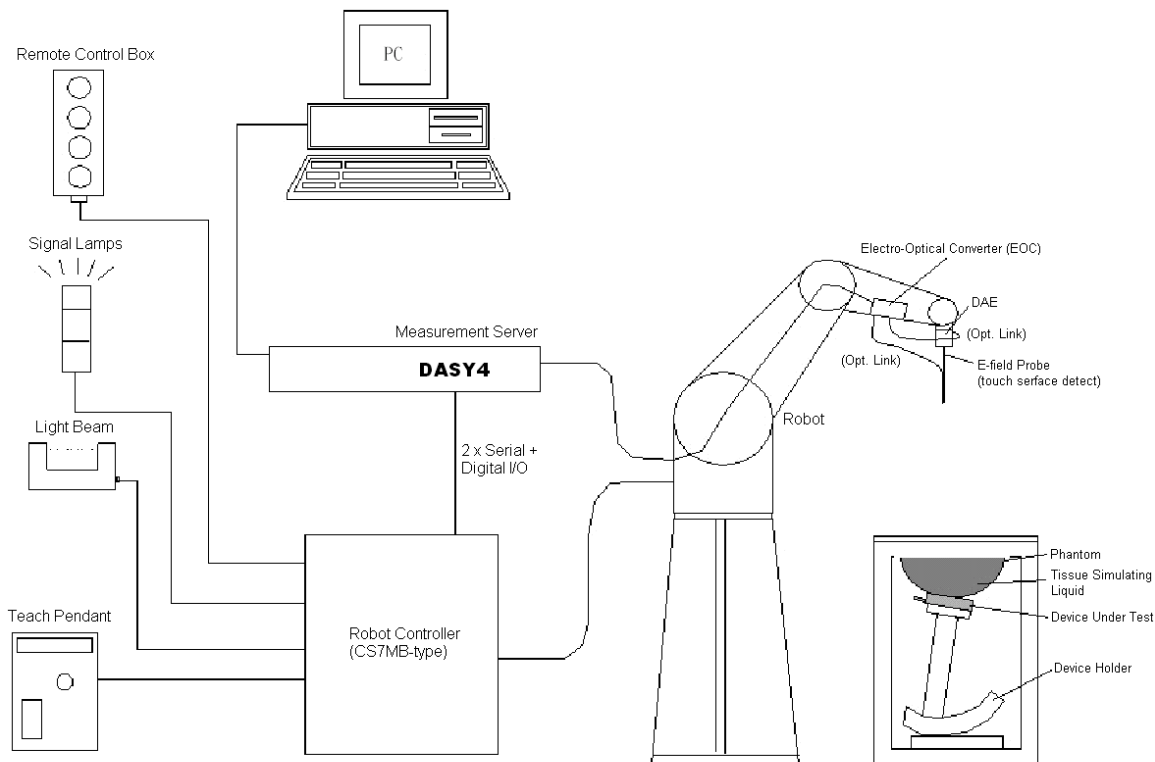
or related to the electrical field in the tissue by

$$\mathbf{SAR} = \frac{\sigma |E|^2}{\rho}$$

, where  $\sigma$  is the conductivity of the tissue,  $\rho$  is the mass density of the tissue and  $E$  is the rms electrical field strength.

However for evaluating SAR of low power transmitter, electrical field measurement is typically applied.

## 5. SAR Measurement Setup



**Fig. 5.1 DASY4 system**



The DASY4 system for performance compliance tests is illustrated above graphically. This system consists of the following items:

- A standard high precision 6-axis robot with controller, a teach pendant and software
- A data acquisition electronic (DAE) attached to the robot arm extension
- A dosimetric probe equipped with an optical surface detector system
- The electro-optical converter (ECO) performs the conversion between optical and electrical signals
- A measurement server performs the time critical tasks such as signal filtering, control of the robot operation and fast movement interrupts.
- A probe alignment unit which improves the accuracy of the probe positioning
- A computer operating Windows XP
- DASY4 software
- Remote control with teach pendant and additional circuitry for robot safety such as warning lamps, etc.
- The SAM twin phantom
- A device holder
- Tissue simulating liquid
- Dipole for evaluating the proper functioning of the system

Some of the components are described in details in the following sub-sections.

### **5.1 DASY4 E-Field Probe System**

The SAR measurement is conducted with the dosimetric probe ET3DV6 (manufactured by SPEAG). The probe is specially designed and calibrated for use in liquid with high permittivity. The dosimetric probe has special calibration in liquid at different frequency. This probe has a built in optical surface detection system to prevent from collision with phantom.

### 5.1.1 ET3DV6 E-Field Probe Specification

<b>Construction</b>	Symmetrical design with triangular core Built-in optical fiber for surface detection system Built-in shielding against static charges PEEK enclosure material (resistant to organic solvents)
<b>Calibration</b>	Simulating tissue at frequencies of 900MHz, 1.8GHz and 2.45GHz for brain and muscle (accuracy $\pm 8\%$ )
<b>Frequency</b>	10 MHz to > 3 GHz
<b>Directivity</b>	$\pm 0.2$ dB in brain tissue (rotation around probe axis) $\pm 0.4$ dB in brain tissue (rotation perpendicular to probe axis)
<b>Dynamic Range</b>	5 $\mu$ W/g to > 100mW/g; Linearity: $\pm 0.2$ dB
<b>Surface Detection</b>	$\pm 0.2$ mm repeatability in air and clear liquids on reflecting surface
<b>Dimensions</b>	Overall length: 330mm Tip length: 16mm Body diameter: 12mm  Tip diameter: 6.8mm Distance from probe tip to dipole centers: 2.7mm
<b>Application</b>	General dosimetry up to 3GHz Compliance tests for mobile phones and Wireless LAN Fast automatic scanning in arbitrary phantoms



**Fig. 5.2 Probe setup on robot**

### 5.1.2 ET3DV6 E-Field Probe Calibration

Each probe needs to be calibrated according to a dosimetric assessment procedure with accuracy better than  $\pm 10\%$ . The spherical isotropy shall be evaluated and within  $\pm 0.25$ dB. The sensitivity parameters (NormX, NormY, and NormZ), the diode compression parameter (DCP) and the conversion factor (ConvF) of the probe are tested. The calibration data are as below:



<b>Sensitivity</b>	X axis : 1.73 $\mu$ V		Y axis : 1.67 $\mu$ V	Z axis : 1.70 $\mu$ V
<b>Diode compression point</b>	X axis : 95 mV		Y axis : 101 mV	Z axis : 93 mV
<b>Conversion factor (Head / Body)</b>	<b>Frequency (MHz)</b>	<b>X axis</b>	<b>Y axis</b>	<b>Z axis</b>
	800~1000	6.60 / 6.33	6.60 / 6.33	6.60 / 6.33
	1710~1910	5.30 / 4.67	5.30 / 4.67	5.30 / 4.67
<b>Boundary effect (Head / Body)</b>	<b>Frequency (MHz)</b>	<b>Alpha</b>	<b>Depth</b>	
	800~1000	0.49 / 0.45	1.94 / 2.12	
	1710~1910	0.48 / 0.59	2.74 / 2.89	

NOTE:

- The probe parameters have been calibrated by the SPEAG.

## **5.2 DATA Acquisition Electronics (DAE)**

The data acquisition electronics (DAE) consists of a highly sensitive electrometer-grade preamplifier with auto-zeroing, a channel and gain-switching multiplexer, a fast 16 bit AD-converter and a command decoder and control logic unit. Transmission to the measurement server is accomplished through an optical downlink for data and status information as well as an optical uplink for commands and the clock.

The mechanical probe mounting device includes two different sensor systems for frontal and sideways probe contacts. They are used for mechanical surface detection and probe collision detection.

The input impedance of the DAE is 200M Ohm; the inputs are symmetrical and floating. Common mode rejection is above 80dB.



---

### **5.3 Robot**

The DASY4 system uses the high precision robots RX90BL type out of the newer series from Stäubli SA (France). For the 6-axis controller DASYS system, the CS7MB robot controller version from Stäubli is used. The RX robot series have many features that are important for our application:

- High precision (repeatability 0.02 mm)
- High reliability (industrial design)
- Jerk-free straight movements
- Low ELF interference (the closed metallic construction shields against motor control fields)
- 6-axis controller

### **5.4 Measurement Server**

The DASY4 measurement server is based on a PC/104 CPU board with  
166 MHz CPU  
32 MB chipset and  
64 MB RAM.

Communication with  
the DAE4 electronic box  
the 16-bit AD-converter system for optical detection and digital I/O interface.

The measurement server performs all the real-time data evaluation for field measurements and surface detection, controls robot movements and handles safety operations.

### **5.5 SAM Twin Phantom**

The SAM twin phantom is a fiberglass shell phantom with 2mm shell thickness (except the ear region where shell thickness increases to 6mm). It has three measurement areas:

- Left head
- Right head
- Flat phantom

The bottom plate contains three pair of bolts for locking the device holder. The device holder positions are adjusted to the standard measurement positions in the three sections.

A white cover is provided to tap the phantom during off-periods to prevent water evaporation and changes in the liquid parameters.

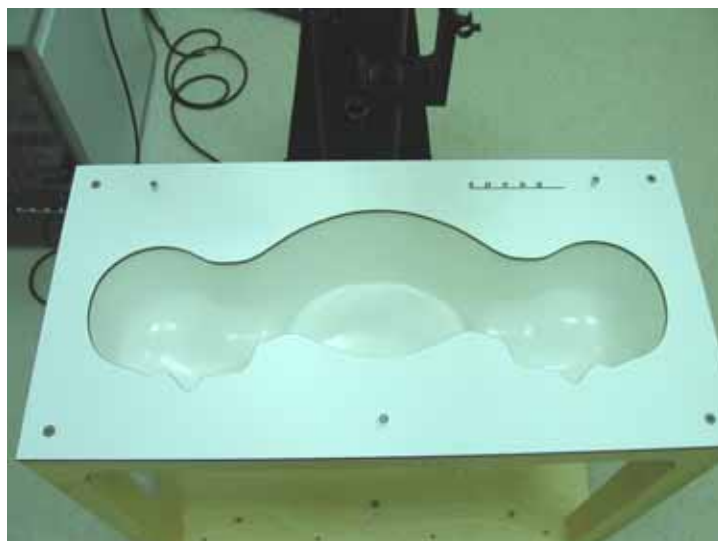


On the phantom top, three reference markers are provided to identify the phantom position with respect to the robot.

The phantom can be used with the following tissue simulating liquids:

\*Water-sugar based liquid

\*Glycol based liquids



**Fig. 5.3 Top view of twin phantom**



**Fig. 5.4 Bottom view of twin phantom**



### **5.6 Device Holder for SAM Twin Phantom**

The SAR in the Phantom is approximately inversely proportional to the square of the distance between the source and the liquid surface. For a source in 5 mm distance, a positioning uncertainty of  $\pm 0.5\text{mm}$  would produce a SAR uncertainty of  $\pm 20\%$ . An accurate device position is therefore crucial for accurate and repeatable measurement. The position in which the devices must be measured, are defined by the standards.

The DASY device holder is designed to cope with different positions given in the standard. It has two scales for the device rotation (with respect to the body axis) and the device inclination (with respect to the line between the ear reference points). The rotation centers for both scales is the ear reference point (EPR). Thus the device needs no repositioning when changing the angles.

The DASY device holder has been made out of low-loss POM material having the following dielectric parameters: relative permittivity  $\epsilon_r=3$  and loss tangent  $\delta=0.02$ . The amount of dielectric material has been reduced in the closest vicinity of the device, since measurements have suggested that the influence of the clamp on the test results could thus be lowered.



**Fig. 5.5 Device Holder**



## **5.7 Data Storage and Evaluation**

### **5.7.1 Data Storage**

The DASY4 software stores the assessed data from the data acquisition electronics as raw data (in microvolt readings from the probe sensors), together with all the necessary software parameters for the data evaluation (probe calibration data, liquid parameters and device frequency and modulation data) in measurement files with the extension .DA4. The postprocessing software evaluates the desired unit and format for output each time the data is visualized or exported. This allows verification of the complete software setup even after the measurement and allows correction of erroneous parameter settings. For example, if a measurement has been performed with an incorrect crest factor parameter in the device setup, the parameter can be corrected afterwards and the data can be reevaluated.

The measured data can be visualized or exported in different units or formats, depending on the selected probe type (e.g., [V/m], [A/m], [mW/g]). Some of these units are not available in certain situations or give meaningless results, e.g., a SAR-output in a loseless media, will always be zero. Raw data can also be exported to perform the evaluation with other software packages.

### **5.7.2 Data Evaluation**

The DASY4 postprocessing software (SEMCAD) automatically executes the following procedures to calculate the field units from the microvolt readings at the probe connector. The parameters used in the evaluation are stored in the configuration modules of the software :

<b>Probe parameters :</b>	- Sensitivity	$\text{Norm}_i, a_{i0}, a_{i1}, a_{i2}$
	- Conversion factor	$\text{ConvF}_i$
	- Diode compression point	$\text{dcp}_i$
<b>Device parameters :</b>	- Frequency	$f$
	- Crest factor	$cf$
<b>Media parameters :</b>	- Conductivity	
	- Density	

These parameters must be set correctly in the software. They can be found in the component documents or they can be imported into the software from the configuration files issued for the DASY components. In the direct measuring mode of the multimeter option, the parameters of the actual system setup are used. In the scan visualization and export modes, the parameters stored in the corresponding document files are used.

The first step of the evaluation is a linearization of the filtered input signal to account for the compression characteristics of the detector diode. The compensation depends on the input signal, the diode type and the DC-transmission factor from the diode to the evaluation electronics. If the exciting field is pulsed, the crest factor of the signal must be known to correctly compensate for peak power. The formula for each channel



can be given as :

$$V_i = U_i + U_i^2 \cdot \frac{cf}{dcp_i}$$

with  $V_i$  = compensated signal of channel  $i$  ( $i = x, y, z$ )  
 $U_i$  = input signal of channel  $i$  ( $i = x, y, z$ )  
 $cf$  = crest factor of exciting field (DASY parameter)  
 $dcp_i$  = diode compression point (DASY parameter)

From the compensated input signals, the primary field data for each channel can be evaluated :

$$\text{E-field probes : } E_i = \sqrt{\frac{V_i}{\text{Norm}_i \text{ConvF}}}$$

$$\text{H-field probes : } H_i = \sqrt{V_i \frac{a_{i0} + a_{i1}f + a_{i2}f^2}{f}}$$

with  $V_i$  = compensated signal of channel  $i$  ( $i = x, y, z$ )  
 $\text{Norm}_i$  = sensor sensitivity of channel  $i$  ( $i = x, y, z$ )  
 $\mu \text{ V}/(\text{V}/\text{m})^2$  for E-field Probes  
 $\text{ConvF}$  = sensitivity enhancement in solution  
 $a_{ij}$  = sensor sensitivity factors for H-field probes  
 $f$  = carrier frequency [GHz]  
 $E_i$  = electric field strength of channel  $i$  in V/m  
 $H_i$  = magnetic field strength of channel  $i$  in A/m

The RSS value of the field components gives the total field strength (Hermitian magnitude) :

$$E_{tot} = \sqrt{E_x^2 + E_y^2 + E_z^2}$$

The primary field data are used to calculate the derived field units.

$$\text{SAR} = E_{tot}^2 \cdot \frac{\sigma}{\rho \cdot 1000}$$

with  $\text{SAR}$  = local specific absorption rate in mW/g  
 $E_{tot}$  = total field strength in V/m  
 $\sigma$  = conductivity in [mho/m] or [Siemens/m]  
 $\rho$  = equivalent tissue density in g/cm<sup>3</sup>



\* Note that the density is set to 1, to account for actual head tissue density rather than the density of the tissue simulating liquid.

The power flow density is calculated assuming the excitation field to be a free space field.

$$P_{pwe} = \frac{E_{tot}^2}{3770} \quad \text{or} \quad P_{pwe} = H_{tot}^2 \cdot 37.7$$

with  $P_{pwe}$  = equivalent power density of a plane wave in mW/cm<sup>2</sup>  
 $E_{tot}$  = total electric field strength in V/m  
 $H_{tot}$  = total magnetic field strength in A/m

**5.8 Test Equipment List**

Manufacture	Name of Equipment	Type/Model	Serial Number	Calibration	
				Last Cal.	Due Date
SPEAG	Dosimetric E-Filed Probe	ET3DV6	1788	Sep 19, 2006	Sep. 19, 2007
SPEAG	835MHz System Validation Kit	D835V2	499	Mar. 15, 2006	Mar. 15, 2008
SPEAG	1900MHz System Validation Kit	D1900V2	5d041	Mar. 21, 2006	Mar. 21, 2008
SPEAG	Data Acquisition Electronics	DAE3	577	Nov. 21, 2006	Nov. 21, 2007
SPEAG	Device Holder	N/A	N/A	NCR	NCR
SPEAG	Phantom	QD 000 P40 C	TP-1150	NCR	NCR
SPEAG	Robot	Staubli RX90BL	F03/5W15A1/A/01	NCR	NCR
SPEAG	Software	DASY4 V4.7 Build 44	N/A	NCR	NCR
SPEAG	Software	SEMCAD V1.8 Build 171	N/A	NCR	NCR
SPEAG	Measurement Server	SE UMS 001 BA	1021	NCR	NCR
Agilent	ENA Series Network Analyzer	E5071B	MY42403579	Mar. 16, 2006	Mar. 16, 2007
Agilent	Dielectric Probe Kit	85070D	US01440205	NCR	NCR
Agilent	Dual Directional Coupler	778D	50422	NCR	NCR
Agilent	Power Amplifier	8449B	3008A01917	NCR	NCR
R&S	Radio Communication Tester	CMU200	105513	Jul. 25, 2006	Jul. 25, 2007
Agilent	Power Meter	E4416A	GB41292344	Jan. 23, 2006	Jan. 23, 2008
Agilent	Power Sensor	E9327A	US40441548	Feb. 6, 2006	Feb. 6, 2007
Agilent	Signal Generator	E8247C	MY43320596	Mar. 1, 2006	Mar. 1, 2008

**Table 5.1 Test Equipment List**

## 6. Tissue Simulating Liquids

For the measurement of the field distribution inside the SAM phantom with DASY4, the phantom must be filled with around 25 liters of homogeneous tissue simulating liquid. The liquid height from the ear reference point (ERP) of the phantom to the liquid top surface is (head SAR) or from the flat phantom to the liquid top surface (body SAR) is 15.2cm.

The following ingredients for tissue simulating liquid are used:

- **Water:** deionized water (pure H<sub>2</sub>O), resistivity 16M $\Omega$  - as basis for the liquid
- **Sugar:** refined sugar in crystals, as available in food shops – to reduce relative permittivity
- **Salt:** pure NaCl – to increase conductivity
- **Cellulose:** Hydroxyethyl-cellulose, medium viscosity (75-125 mPa.s, 2% in water, 20°C), CAS#54290-to increase viscosity and to keep sugar in solution.
- **Preservative:** Preventol D-7 Bayer AG, D-51368 Leverkusen, CAS#55965-84-9- to prevent the spread of bacteria and molds.
- **DGMBE:** Deithlenglycol-monobuthyl ether (DGMBE), Fluka Chemie GmbH, CAS#112-34-5 – to reduce relative permittivity.

Table 6.1 gives the recipes for one liter of head and body tissue simulating liquid for frequency band 1900 MHz.

Ingredient	HSL-850	MSL-850	HSL-1900	MSL-1900
Water	532.98 g	631.68 g	552.42 g	716.56 g
Cellulose	0 g	0 g	0 g	0 g
Salt	18.3 g	11.72 g	3.06 g	4.0 g
Preventol D-7	2.4 g	1.2 g	0 g	0 g
Sugar	766.0 g	600.0 g	0 g	0 g
DGMBE	0 g	0 g	444.52 g	300.67 g
Total amount	1 liter (1.3 kg)	1 liter	1 liter (1.0 kg)	1 liter (1.0 kg)
Dielectric Parameters at 22°	f = 835 MHz r = 41.5±5%, = 0.90±5% S/m	f = 835 MHz r = 55.2±5%, = 0.97±5% S/m	f = 1900 MHz r = 40.0±5%, = 1.4±5% S/m	f = 1900 MHz r = 53.3±5 %, = 1.52±5% S/m

**Table 6.1**

The dielectric parameters of the liquids were verified prior to the SAR evaluation using an Agilent 85070D Dielectric Probe Kit and an Agilent Network Analyzer.

Table 6.2 shows the measuring results for head and muscle simulating liquid.

	Bands	Frequency(MHz)	Permittivity ( $\epsilon_r$ )	Conductivity ( $\sigma$ )	Measurement Date
Head	GSM850 band (824 ~ 849 MHz)	824.2	43	0.883	Dec. 25, 2006
		836.4	42.9	0.896	
		848.8	42.7	0.909	
Body	GSM850 band (824 ~ 849 MHz)	824.2	56.7	0.963	Dec. 27, 2006
		836.6	56.6	0.976	
		848.8	56.6	0.989	
Head	PCS band (1850 ~ 1910 MHz)	1850.2	41.6	1.43	Dec. 26, 2006
		1880.0	41.6	1.45	
		1909.8	41.1	1.47	
Body	PCS band (1850 ~ 1910 MHz)	1850.2	52.6	1.47	Dec. 27, 2006
		1880.0	52.5	1.5	
		1909.8	52.3	1.55	
Head	GSM850 band (824 ~ 849 MHz)	824.2	43.2	0.886	Jan. 02, 2007
		836.4	43.1	0.9	
		848.8	42.9	0.912	
Body	GSM850 band (824 ~ 849 MHz)	824.2	56.7	0.961	Jan. 03, 2007
		836.6	56.7	0.974	
		848.8	56.6	0.987	
Head	PCS band (1850 ~ 1910 MHz)	1850.2	41.6	1.43	Jan. 02, 2007
		1880.0	41.5	1.45	
		1909.8	41.1	1.47	
Body	PCS band (1850 ~ 1910 MHz)	1850.2	53.2	1.48	Jan. 03, 2007
		1880.0	53	1.52	
		1909.8	52.8	1.57	

**Table 6.2**

The measuring data are consistent with  $\epsilon_r = 41.5 \pm 5\%$  and  $\sigma = 0.9 \pm 5\%$  for head GSM 850 band and  $\epsilon_r = 55.2 \pm 5\%$  and  $\sigma = 0.97 \pm 5\%$  for body GSM 850 band and  $\epsilon_r = 40.0 \pm 5\%$  and  $\sigma = 1.4 \pm 5\%$  for head PCS 1900 band and  $\epsilon_r = 53.3 \pm 5\%$  and  $\sigma = 1.52 \pm 5\%$  for body PCS 1900 band.



## **7. Uncertainty Assessment**

The component of uncertainty may generally be categorized according to the methods used to evaluate them. The evaluation of uncertainty by the statistical analysis of a series of observations is termed a Type A evaluation of uncertainty. The evaluation of uncertainty by means other than the statistical analysis of a series of observation is termed a Type B evaluation of uncertainty. Each component of uncertainty, however evaluated, is represented by an estimated standard deviation, termed standard uncertainty, which is determined by the positive square root of the estimated variance.

A Type A evaluation of standard uncertainty may be based on any valid statistical method for treating data. This includes calculating the standard deviation of the mean of a series of independent observations; using the method of least squares to fit a curve to the data in order to estimate the parameter of the curve and their standard deviations; or carrying out an analysis of variance in order to identify and quantify random effects in certain kinds of measurement.

A type B evaluation of standard uncertainty is typically based on scientific judgment using all of the relevant information available. These may include previous measurement data, experience and knowledge of the behavior and properties of relevant materials and instruments, manufacture's specification, data provided in calibration reports and uncertainties assigned to reference data taken from handbooks. Broadly speaking, the uncertainty is either obtained from an outdoor source or obtained from an assumed distribution, such as the normal distribution, rectangular or triangular distributions indicated in Table 7.1

Uncertainty Distributions	Normal	Rectangular	Triangular	U-shape
Multiplying factor <sup>(a)</sup>	1/k <sup>(b)</sup>	1/ 3	1/ 6	1/ 2

(a) standard uncertainty is determined as the product of the multiplying factor and the estimated range of variations in the measured quantity

(b) is the coverage factor

**Table 7.1**

The combined standard uncertainty of the measurement result represents the estimated standard deviation of the result. It is obtained by combining the individual standard uncertainties of both Type A and Type B evaluation using the usual “root-sum-squares” (RSS) methods of combining standard deviations by taking the positive square root of the estimated variances.

Expanded uncertainty is a measure of uncertainty that defines an interval about the measurement result within which the measured value is confidently believed to lie. It is obtained by multiplying the combined standard uncertainty by a coverage factor. Typically, the coverage factor ranges from 2 to 3. Using a coverage factor allows the true value of a measured quantity to be specified with a defined probability within the specified uncertainty range. For purpose of this document, a coverage factor two is used, which corresponds to confidence interval of about 95 %. The DASY4 uncertainty Budget is showed in Table 7.2.





Error Description	Uncertainty Value $\pm$ %	Probability Distribution	Divisor	$C_i$ $I_g$	Standard Unc. (1-g)	$v_i$ or $V_{eff}$
<b>Measurement System</b>						
Probe Calibration	$\pm 4.8$	Normal	1	1	$\pm 4.8$	
Axial Isotropy	$\pm 4.7$	Rectangular	$\sqrt{3}$	$(1-C_p)^{1/2}$	$\pm 1.9$	
Hemispherical Isotropy	$\pm 9.6$	Rectangular	$\sqrt{3}$	$(C_p)^{1/2}$	$\pm 3.9$	
Boundary Effect	$\pm 1.0$	Rectangular	$\sqrt{3}$	1	$\pm 0.6$	
Linearity	$\pm 4.7$	Rectangular	$\sqrt{3}$	1	$\pm 2.7$	
System Detection Limit	$\pm 1.0$	Rectangular	$\sqrt{3}$	1	$\pm 0.6$	
Readout Electronics	$\pm 1.0$	Rectangular	1	1	$\pm 1.0$	
Response Time	$\pm 0.8$	Normal	$\sqrt{3}$	1	$\pm 0.5$	
Integration time	$\pm 2.6$	Rectangular	$\sqrt{3}$	1	$\pm 1.5$	
RF Ambient Conditions	$\pm 3.0$	Rectangular	$\sqrt{3}$	1	$\pm 1.7$	
Probe Positioner Mech. Tolerance	$\pm 0.4$	Rectangular	$\sqrt{3}$	1	$\pm 0.2$	
Probe Positioning with respect to Phantom Shell	$\pm 2.9$	Rectangular	$\sqrt{3}$	1	$\pm 1.7$	
Extrapolation and Interpolation Algorithms for Max. SAR Evaluation	$\pm 1.0$	Rectangular	$\sqrt{3}$	1	$\pm 0.6$	
<b>Test sample Related</b>						
Test sample Positioning	$\pm 2.9$	Normal	1	1	$\pm 2.9$	145
Device Holder Uncertainty	$\pm 3.6$	Normal	1	1	$\pm 3.6$	5
Output Power Variation-SAR drift measurement	$\pm 2.5$	Rectangular	$\sqrt{3}$	1	$\pm 1.4$	
<b>Phantom and Tissue parameters</b>						
Phantom uncertainty(Including shape and thickness tolerances)	$\pm 4.0$	Rectangular	$\sqrt{3}$	1	$\pm 2.3$	
Liquid Conductivity Target tolerance	$\pm 5.0$	Rectangular	$\sqrt{3}$	0.64	$\pm 1.8$	
Liquid Conductivity measurement uncertainty	$\pm 2.5$	Normal	1	0.64	$\pm 1.6$	
Liquid Permittivity Target tolerance	$\pm 5.0$	Rectangular	$\sqrt{3}$	0.6	$\pm 1.7$	
Liquid Permittivity measurement uncertainty	$\pm 2.0$	Normal	1	0.6	$\pm 1.2$	
Combined standard uncertainty					$\pm 10.3$	330
<b>Coverage Factor for 95 %</b>		<b>K=2</b>				
<b>Expanded uncertainty (Coverage factor = 2)</b>					<b><math>\pm 20.6</math></b>	

**Table 7.2 Uncertainty Budget of DASY**

## **8. SAR Measurement Evaluation**

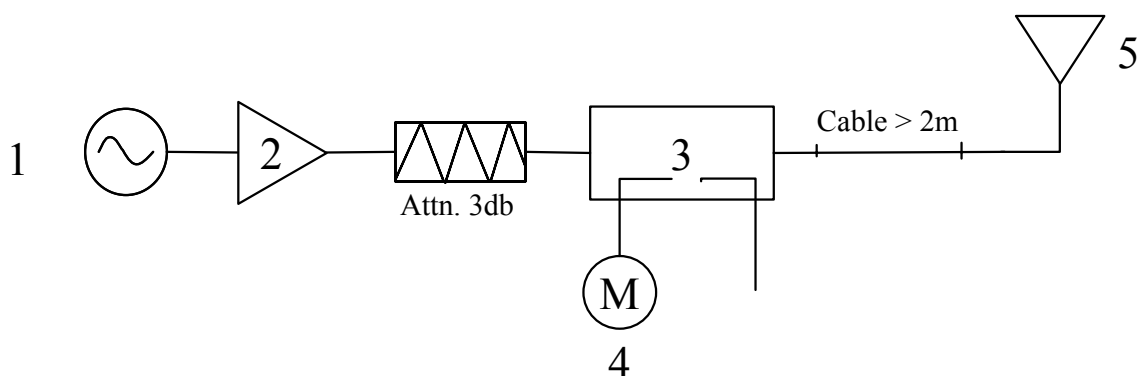
Each DASY system is equipped with one or more system validation kits. These units, together with the predefined measurement procedures within the DASY software, enable the user to conduct the system performance check and system validation. System validation kit includes a dipole, tripod holder to fix it underneath the flat phantom and a corresponding distance holder.

### **8.1 Purpose of System Performance check**

The system performance check verifies that the system operates within its specifications. System and operator errors can be detected and corrected. It is recommended that the system performance check be performed prior to any usage of the system in order to guarantee reproducible results. The system performance check uses normal SAR measurements in a simplified setup with a well characterized source. This setup was selected to give a high sensitivity to all parameters that might fail or vary over time. The system check does not intend to replace the calibration of the components, but indicates situations where the system uncertainty is exceeded due to drift or failure.

### **8.2 System Setup**

In the simplified setup for system evaluation, the DUT is replaced by a calibrated dipole and the power source is replaced by a continuous wave which comes from a signal generator at frequency 835 and 1900 MHz. The calibrated dipole must be placed beneath the flat phantom section of the SAM twin phantom with the correct distance holder. The distance holder should touch the phantom surface with a light pressure at the reference marking and be oriented parallel to the long side of the phantom. The equipment setup is shown below:



**Fig. 8.1**

1. Signal Generator
2. Amplifier
3. Directional Coupler
4. Power Meter
5. 835 or 1900 MHz Dipole

The output power on dipole port must be calibrated to 20dBm (100mW) before dipole is connected.



**Fig 8.2 Dipole Setup**



### 8.3 Validation Results

Comparing to the original SAR value provided by Speag, the validation data should be within its specification of 10 %. Table 8.1 shows the target SAR and measured SAR after normalized to 1W input power.

		Target (W/kg)	Measurement data (W/kg)	Variation	Measurement Date
GSM850 band (835MHz) for head	SAR (1g)	9.24	9.73	5.3 %	Dec. 25, 2006
	SAR (10g)	6.07	6.37	4.9 %	
GSM850 band (835MHz) for body	SAR (1g)	9.91	9.62	-2.9 %	Dec. 26, 2006
	SAR (10g)	6.55	6.33	-3.4 %	
PCS band (1900MHz) for head	SAR (1g)	38.4	38.1	-0.8 %	Dec. 26, 2006
	SAR (10g)	20.5	20.5	0.0 %	
PCS band (1900MHz) for body	SAR (1g)	41.1	39	-5.1 %	Dec. 27, 2006
	SAR (10g)	21.8	20.9	-4.1 %	
GSM850 band (835MHz) for head	SAR (1g)	9.24	9.47	2.5 %	Jan. 02, 2007
	SAR (10g)	6.07	6.27	3.3 %	
GSM850 band (835MHz) for body	SAR (1g)	9.91	10	0.9 %	Jan. 03, 2007
	SAR (10g)	6.55	6.59	0.6 %	
PCS band (1900MHz) for head	SAR (1g)	38.4	38	-1.0 %	Jan. 02, 2007
	SAR (10g)	20.5	20.5	0.0 %	
PCS band (1900MHz) for body	SAR (1g)	41.1	38.8	-5.6 %	Jan. 03, 2007
	SAR (10g)	21.8	20.8	-4.6 %	

**Table 8.1**

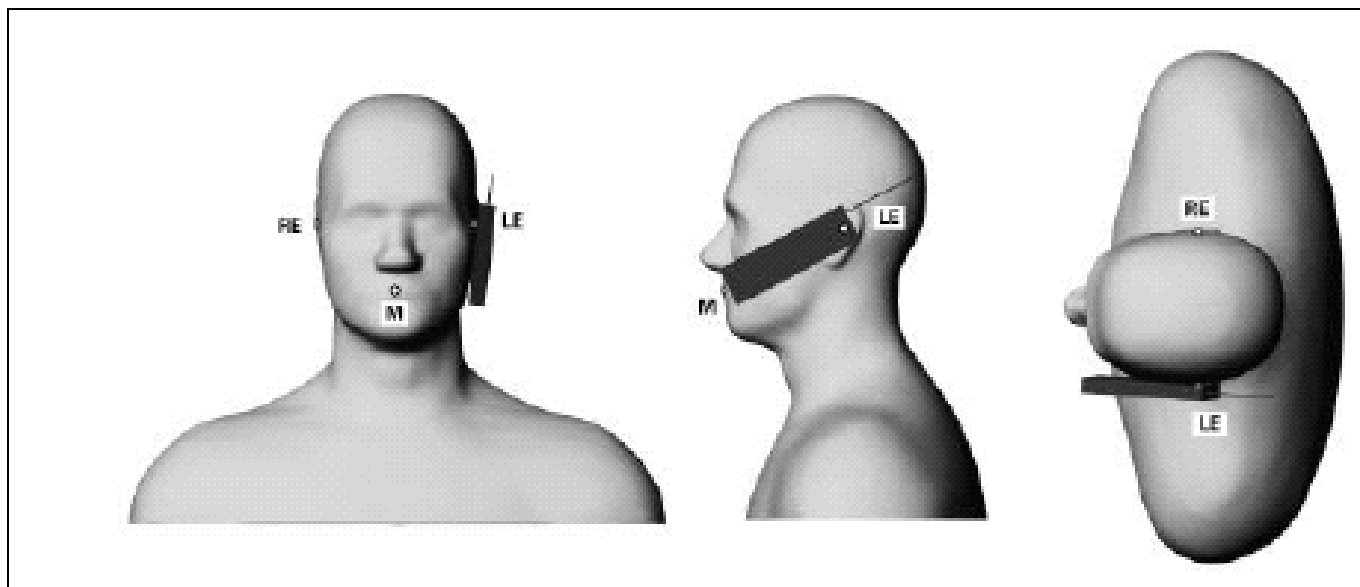
The table above indicates the system performance check can meet the variation criterion.



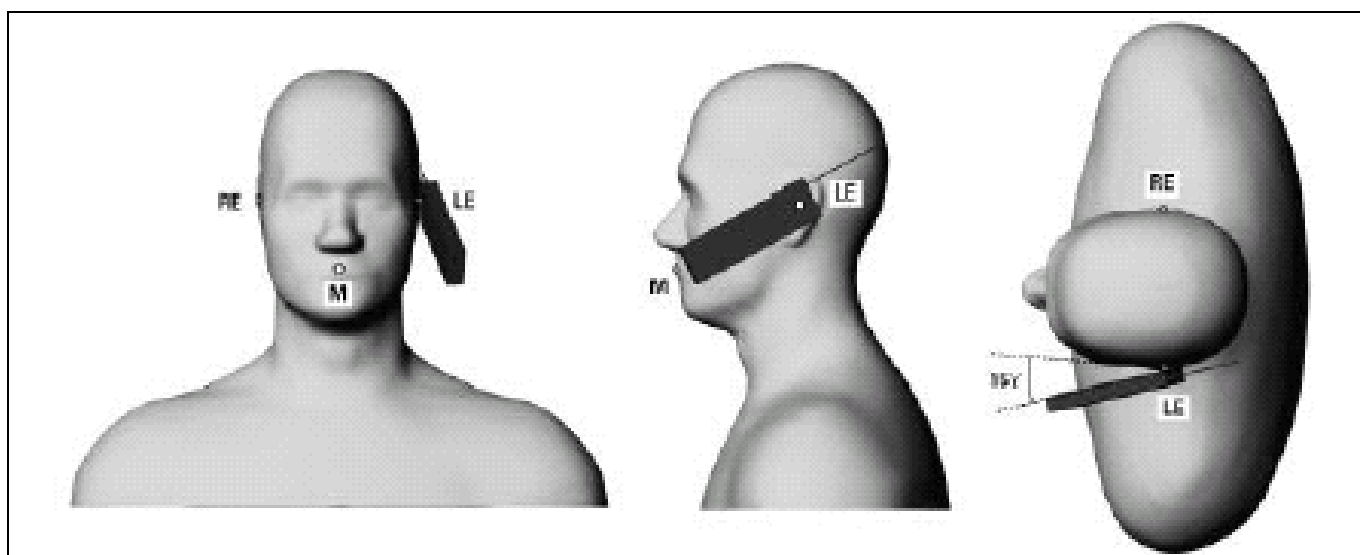
## **9. Description for DUT Testing Position**

This DUT was tested in 6 different positions. They are left cheek, left tilted, right cheek, right tilted, body worn with keypad up and body worn with keypad down as illustrated below:

- 1) “Cheek Position”
  - i) To position the device with the vertical center line of the body of the device and the horizontal line crossing the center piece in a plane parallel to the sagittal plane of the phantom. While maintaining the device in this plane, align the vertical center line with the reference plane containing the three ear and mouth reference point (M, RE and LE) and align the center of the ear piece with the line RE-LE.
  - ii) To move the device towards the phantom with the ear piece aligned with the line LE-RE until the phone touched the ear. While maintaining the device in the reference plane and maintaining the phone contact with the ear, move the bottom of the phone until any point on the front side is in contact with the cheek of the phantom or until contact with the ear is lost (see Fig. 9.1).
- 2) “Tilted Position”
  - i) To position the device in the “cheek” position described above.
  - ii) While maintaining the device the reference plane described above and pivoting against the ear, move it outward away from the mouth by an angle of 15 degrees or until contact with the ear is lost (see Fig. 9.2).
- 3) “Body Worn”
  - i) To position the device parallel to the phantom surface.
  - ii) To adjust the phone parallel to the flat phantom.
  - iii) To adjust the distance between the DUT surface and the flat phantom to 1.5 cm.

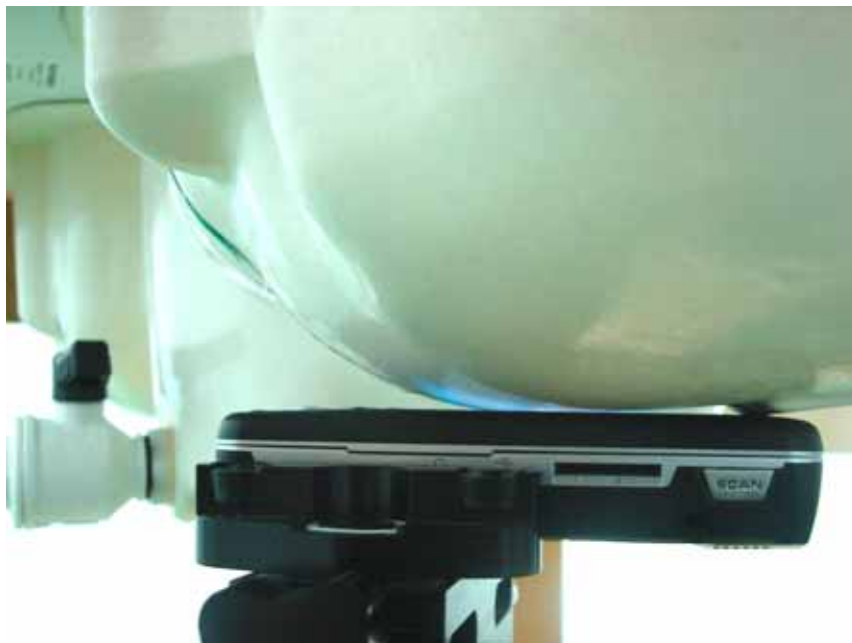


**Fig. 9.1 Phone Position 1, “Cheek” or “Touch” Position.** The reference points for the right ear (RE), left ear (LE) and mouth (M), which define the plane for phone positioning, are indicated.



**Fig. 9.2 Phone Position 2, “Tilted Position”.** The reference point for the right ear (RE), left ear (LE) and mouth (M), which define the plane for phone positioning, are indicated.

**Fig. 9.3 Right Cheek****Fig. 9.4 Right Tilted**



**Fig. 9.5 Left Cheek**



**Fig. 9.6 Left Tilted**





**Fig. 9.7 Keypad Up with 1.5cm Gap for Scanner 1**



**Fig. 9.8 Keypad Down with 1.5cm Gap for Scanner 1**



**Fig. 9.9 Keypad Down with 1.5cm Gap for Scanner 2**



## **10. Measurement Procedures**

The measurement procedures are as follows:

- Linking DUT with base station emulator CMU200 in middle channel for PCS1900 band
- Setting PCL=5 for GSM850 or PCL=0 for PCS1900 on CMU200 to allow DUT to radiate maximum output power
- Measuring output power through RF cable and power meter
- Placing the DUT in the positions described in the last section
- Setting scan area, grid size and other setting on the DASY4 software
- Taking data for the lowest, middle, and highest channel on each testing position

According to the IEEE P1528 draft standard, the recommended procedure for assessing the peak spatial-average SAR value consists of the following steps:

- Power reference measurement
- Area scan
- Zoom scan
- Power reference measurement

### **10.1 Spatial Peak SAR Evaluation**

The procedure for spatial peak SAR evaluation has been implemented according to the IEEE1528-2003 standard. It can be conducted for 1g and 10g, as well as for user-specific masses. The DASY4 software includes all numerical procedures necessary to evaluate the spatial peak SAR value.

Base on the Draft: SCC-34, SC-2, WG-2-Computational Dosimetry, IEEE P1528/D1.2 (Recommended Practice for Determining the Peak Spatial-Average Specific Absorption Rate (SAR) in the Human Head from Wireless Communications Devices: Measurement Techniques), a new algorithm has been implemented. The spatial-peak SAR can be computed over any required mass.

The base for the evaluation is a "cube" measurement. The measured volume must include the 1g and 10g cubes with the highest averaged SAR values. For that purpose , the center of the measured volume is aligned to the interpolated peak SAR value of a previously performed area scan.

The entire evaluation of the spatial peak values is performed within the postprocessing engine (SEMCAD). The system always gives the maximum values for the 1g and 10g cubes. The algorithm to find the cube with highest averaged SAR is divided into the following stages:



- 
- extraction of the measured data (grid and values) from the Zoom Scan
  - calculation of the SAR value at every measurement point based on all stored data (A/D values and measurement parameters)
  - generation of a high-resolution mesh within the measured volume
  
  - interpolation of all measured values from the measurement grid to the high-resolution grid
  - extrapolation of the entire 3-D field distribution to the phantom surface over the distance from sensor to surface
  - calculation of the averaged SAR within masses of 1g and 10g

### **10.2 Scan Procedures**

First **Area Scan** is used to locate the approximate location(s) of the local peak SAR value(s). The measurement grid within an **Area Scan** is defined by the grid extent, grid step size and grid offset. Next, in order to determine the EM field distribution in a three-dimensional spatial extension, **Zoom Scan** is required. The **Zoom Scan** measures 5x5x7 points with step size 8, 8 and 5 mm. The **Zoom Scan** is performed around the highest E-field value to determine the averaged SAR-distribution over 1 g.

### **10.3 SAR Averaged Methods**

In DASY4, the interpolation and extrapolation are both based on the modified Quadratic Shepard's method. The interpolation scheme combines a least-square fitted function method and a weighted average method which are the two basic types of computational interpolation and approximation.

Extrapolation routines are used to obtain SAR values between the lowest measurement points and the inner phantom surface. The extrapolation distance is determined by the surface detection distance and the probe sensor offset. The uncertainty increases with the extrapolation distance. To keep the uncertainty within 1% for the 1 g and 10 g cubes, the extrapolation distance should not be larger than 5 mm.



## **11. SAR Test Results**

### **11.1 Right Cheek**

Scanner	Mode	Chan.	Freq (MHz)	Modulation Type	Conducted Power (dBm)	Power Drift (dB)	Measured 1g SAR (W/kg)	Limit (W/kg)	Results
DUT with Scanner 1	GSM850	128	824.2 (Low)	GMSK	32.13	-0.106	0.194	1.6	Pass
		189	836.4 (Mid)	GMSK	32.09	-0.174	0.275	1.6	Pass
		<b>251</b>	<b>848.8 (High)</b>	<b>GMSK</b>	<b>32.07</b>	<b>-0.161</b>	<b>0.35</b>	<b>1.6</b>	<b>Pass</b>
	GSM850 with BT On	251	848.8 (High)	GMSK	32.07	-0.108	0.327	1.6	Pass
	PCS1900	512	1850.2 (Low)	GMSK	29.26	-	-	-	-
		661	1880.0 (Mid)	GMSK	29.23	-0.082	0.134	1.6	Pass
		810	1909.8 (High)	GMSK	29.08	-	-	-	-
DUT with Scanner 2	GSM850	128	824.2 (Low)	GMSK	32.13	-0.129	0.274	1.6	Pass
		189	836.4 (Mid)	GMSK	32.09	-0.039	0.425	1.6	Pass
		<b>251</b>	<b>848.8 (High)</b>	<b>GMSK</b>	<b>32.07</b>	<b>-0.136</b>	<b>0.605</b>	<b>1.6</b>	<b>Pass</b>
	PCS1900	512	1850.2 (Low)	GMSK	29.26	-	-	-	-
		661	1880.0 (Mid)	GMSK	29.23	-	-	-	-
		810	1909.8 (High)	GMSK	29.08	-	-	-	-

### **11.2 Right Tilted**

Scanner	Mode	Chan.	Freq (MHz)	Modulation Type	Conducted Power (dBm)	Power Drift (dB)	Measured 1g SAR (W/kg)	Limit (W/kg)	Results
DUT with Scanner 1	GSM850	128	824.2 (Low)	GMSK	32.13	-	-	-	-
		189	836.4 (Mid)	GMSK	32.09	-0.083	0.202	1.6	Pass
		251	848.8 (High)	GMSK	32.07	-	-	-	-
	PCS1900	512	1850.2 (Low)	GMSK	29.26	-	-	-	-
		661	1880.0 (Mid)	GMSK	29.23	-0.066	0.111	1.6	Pass
		810	1909.8 (High)	GMSK	29.08	-	-	-	-
DUT with Scanner 2	GSM850	128	824.2 (Low)	GMSK	32.13	-	-	-	-
		189	836.4 (Mid)	GMSK	32.09	-	-	-	-
		251	848.8 (High)	GMSK	32.07	-	-	-	-
	PCS1900	512	1850.2 (Low)	GMSK	29.26	-	-	-	-
		661	1880.0 (Mid)	GMSK	29.23	-	-	-	-
		810	1909.8 (High)	GMSK	29.08	-	-	-	-

**11.3 Left Cheek**

Scanner	Mode	Chan.	Freq (MHz)	Modulation Type	Conducted Power (dBm)	Power Drift (dB)	Measured 1g SAR (W/kg)	Limit (W/kg)	Results
DUT with Scanner 1	GSM850	128	824.2 (Low)	GMSK	32.13	-	-	-	-
		189	836.4 (Mid)	GMSK	32.09	-0.104	0.246	1.6	Pass
		251	848.8 (High)	GMSK	32.07	-	-	-	-
	PCS1900	<b>512</b>	<b>1850.2 (Low)</b>	<b>GMSK</b>	<b>29.26</b>	<b>-0.017</b>	<b>0.348</b>	<b>1.6</b>	<b>Pass</b>
		661	1880.0 (Mid)	GMSK	29.23	0.003	0.227	1.6	Pass
		810	1909.8 (High)	GMSK	29.08	-0.107	0.203	1.6	Pass
DUT with Scanner 2	GSM850	128	824.2 (Low)	GMSK	32.13	-	-	-	-
		189	836.4 (Mid)	GMSK	32.09	-	-	-	-
		251	848.8 (High)	GMSK	32.07	-	-	-	-
	PCS1900	<b>512</b>	<b>1850.2 (Low)</b>	<b>GMSK</b>	<b>29.26</b>	<b>-0.035</b>	<b>0.32</b>	<b>1.6</b>	<b>Pass</b>
		661	1880.0 (Mid)	GMSK	29.23	-0.096	0.244	1.6	Pass
		810	1909.8 (High)	GMSK	29.08	-0.12	0.198	1.6	Pass

**11.4 Left Tilted**

Scanner	Mode	Chan.	Freq (MHz)	Modulation Type	Conducted Power (dBm)	Power Drift (dB)	Measured 1g SAR (W/kg)	Limit (W/kg)	Results
DUT with Scanner 1	GSM850	128	824.2 (Low)	GMSK	32.13	-	-	-	-
		189	836.4 (Mid)	GMSK	32.09	-0.049	0.185	1.6	Pass
		251	848.8 (High)	GMSK	32.07	-	-	-	-
	PCS1900	512	1850.2 (Low)	GMSK	29.26	-	-	-	-
		661	1880.0 (Mid)	GMSK	29.23	-0.085	0.132	1.6	Pass
		810	1909.8 (High)	GMSK	29.08	-	-	-	-
DUT with Scanner 2	GSM850	128	824.2 (Low)	GMSK	32.13	-	-	-	-
		189	836.4 (Mid)	GMSK	32.09	-	-	-	-
		251	848.8 (High)	GMSK	32.07	-	-	-	-
	PCS1900	512	1850.2 (Low)	GMSK	29.26	-	-	-	-
		661	1880.0 (Mid)	GMSK	29.23	-	-	-	-
		810	1909.8 (High)	GMSK	29.08	-	-	-	-



**11.5 Keypad Up with 1.5cm Gap**

Scanner	Mode	Chan.	Freq (MHz)	Modulation Type	Conducted Power (dBm)	Power Drift (dB)	Measured 1g SAR (W/kg)	Limit (W/kg)	Results
DUT with Scanner 1	GSM850 (GPRS8)	128	824.2 (Low)	GMSK	32.06	-	-	-	-
		189	836.4 (Mid)	GMSK	32.03	-0.138	0.209	1.6	Pass
		251	848.8 (High)	GMSK	32.02	-	-	-	-
	GSM850 (GPRS10)	128	824.2 (Low)	GMSK	30.29	-	-	-	-
		189	836.4 (Mid)	GMSK	30.26	-	-	-	-
		251	848.8 (High)	GMSK	30.25	-	-	-	-
	GSM850 (GPRS12)	128	824.2 (Low)	GMSK	26.70	-	-	-	-
		189	836.4 (Mid)	GMSK	26.70	-	-	-	-
		251	848.8 (High)	GMSK	26.70	-	-	-	-
	GSM850 (EGPRS8)	128	824.2 (Low)	8PSK	26.00	-	-	-	-
		189	836.4 (Mid)	8PSK	25.90	-	-	-	-
		251	848.8 (High)	8PSK	25.90	-	-	-	-
	GSM850 (EGPRS10)	128	824.2 (Low)	8PSK	23.80	-	-	-	-
		189	836.4 (Mid)	8PSK	23.70	-	-	-	-
		251	848.8 (High)	8PSK	23.70	-	-	-	-
	GSM850 (EGPRS12)	128	824.2 (Low)	8PSK	19.50	-	-	-	-
		189	836.4 (Mid)	8PSK	19.50	-	-	-	-
		251	848.8 (High)	8PSK	19.40	-	-	-	-
	PCS1900 (GPRS8)	512	1850.2 (Low)	GMSK	29.25	-	-	-	-
		661	1880.0 (Mid)	GMSK	29.21	-0.072	0.06	1.6	Pass
		810	1909.8 (High)	GMSK	29.04	-	-	-	-
	PCS1900 (GPRS10)	512	1850.2 (Low)	GMSK	27.39	-	-	-	-
		661	1880.0 (Mid)	GMSK	27.36	-	-	-	-
		810	1909.8 (High)	GMSK	27.21	-	-	-	-
	PCS1900 (GPRS12)	512	1850.2 (Low)	GMSK	23.80	-	-	-	-
		661	1880.0 (Mid)	GMSK	23.70	-	-	-	-
		810	1909.8 (High)	GMSK	23.60	-	-	-	-
	PCS1900 (EGPRS8)	512	1850.2 (Low)	8PSK	25.50	-	-	-	-
		661	1880.0 (Mid)	8PSK	25.40	-	-	-	-
		810	1909.8 (High)	8PSK	25.30	-	-	-	-
	PCS1900 (EGPRS10)	512	1850.2 (Low)	8PSK	23.40	-	-	-	-
		661	1880.0 (Mid)	8PSK	23.30	-	-	-	-
		810	1909.8 (High)	8PSK	23.20	-	-	-	-
	PCS1900 (EGPRS12)	512	1850.2 (Low)	8PSK	19.30	-	-	-	-
		661	1880.0 (Mid)	8PSK	19.20	-	-	-	-
		810	1909.8 (High)	8PSK	19.10	-	-	-	-



**11.6 Keypad Down with 1.5cm Gap**

Scanner	Mode	Chan.	Freq (MHz)	Modulation Type	Conducted Power (dBm)	Power Drift (dB)	Measured 1g SAR (W/kg)	Limit (W/kg)	Results
DUT with Scanner 1	GSM850 (GPRS8)	128	824.2 (Low)	GMSK	32.06	-	-	-	-
		189	836.4 (Mid)	GMSK	32.03	-0.11	0.358	1.6	Pass
		251	848.8 (High)	GMSK	32.02	-	-	-	-
	GSM850 (GPRS10)	128	824.2 (Low)	GMSK	30.29	-0.165	0.392	1.6	Pass
		189	836.4 (Mid)	GMSK	30.26	-0.091	0.463	1.6	Pass
		<b>251</b>	<b>848.8 (High)</b>	<b>GMSK</b>	<b>30.25</b>	<b>-0.086</b>	<b>0.597</b>	<b>1.6</b>	<b>Pass</b>
	GSM850 (GPRS10) with BT On	251	848.8 (High)	GMSK	30.25	-0.066	0.582	1.6	Pass
	GSM850 (GPRS12)	128	824.2 (Low)	GMSK	26.70	-	-	-	-
		189	836.4 (Mid)	GMSK	26.70	-0.011	0.406	1.6	Pass
		251	848.8 (High)	GMSK	26.70	-	-	-	-
	GSM850 (EGPRS8)	128	824.2 (Low)	8PSK	26.00	-	-	-	-
		189	836.4 (Mid)	8PSK	25.90	-0.135	0.108	1.6	Pass
		251	848.8 (High)	8PSK	25.90	-	-	-	-
	GSM850 (EGPRS10)	128	824.2 (Low)	8PSK	23.80	-	-	-	-
		189	836.4 (Mid)	8PSK	23.70	-0.129	0.132	1.6	Pass
		251	848.8 (High)	8PSK	23.70	-	-	-	-
	GSM850 (EGPRS12)	128	824.2 (Low)	8PSK	19.50	-	-	-	-
		189	836.4 (Mid)	8PSK	19.50	-0.168	0.095	1.6	Pass
		251	848.8 (High)	8PSK	19.40	-	-	-	-
	PCS1900 (GPRS8)	512	1850.2 (Low)	GMSK	29.25	-	-	-	-
		661	1880.0 (Mid)	GMSK	29.21	-0.186	0.09	1.6	Pass
		810	1909.8 (High)	GMSK	29.04	-	-	-	-
	PCS1900 (GPRS10)	<b>512</b>	<b>1850.2 (Low)</b>	<b>GMSK</b>	<b>27.39</b>	<b>-0.107</b>	<b>0.162</b>	<b>1.6</b>	<b>Pass</b>
		661	1880.0 (Mid)	GMSK	27.36	0.126	0.122	1.6	Pass
		810	1909.8 (High)	GMSK	27.21	-0.146	0.114	1.6	Pass
	PCS1900 (GPRS10) with BT On	512	1850.2 (Low)	GMSK	27.39	-0.126	0.158	1.6	Pass
	PCS1900 (GPRS12)	512	1850.2 (Low)	GMSK	23.80	-	-	-	-
		661	1880.0 (Mid)	GMSK	23.70	-0.151	0.106	1.6	Pass
		810	1909.8 (High)	GMSK	23.60	-	-	-	-
	PCS1900 (EGPRS8)	512	1850.2 (Low)	8PSK	25.50	-	-	-	-
		661	1880.0 (Mid)	8PSK	25.40	-0.183	0.044	1.6	Pass
		810	1909.8 (High)	8PSK	25.30	-	-	-	-
	PCS1900 (EGPRS10)	512	1850.2 (Low)	8PSK	23.40	-	-	-	-
		661	1880.0 (Mid)	8PSK	23.30	-0.168	0.096	1.6	Pass
		810	1909.8 (High)	8PSK	23.20	-	-	-	-
	PCS1900 (EGPRS12)	512	1850.2 (Low)	8PSK	19.30	-	-	-	-
		661	1880.0 (Mid)	8PSK	19.20	0.11	0.046	1.6	Pass
		810	1909.8 (High)	8PSK	19.10	-	-	-	-





DUT with Scanner 2	GSM850 (GPRS10)	128	824.2 (Low)	GMSK	30.29	0.088	0.638	1.6	Pass
		189	836.4 (Mid)	GMSK	30.26	-0.019	0.732	1.6	Pass
		<b>251</b>	<b>848.8 (High)</b>	<b>GMSK</b>	<b>30.25</b>	<b>-0.151</b>	<b>0.863</b>	<b>1.6</b>	<b>Pass</b>
	PCS1900 (GPRS10)	<b>512</b>	<b>1850.2 (Low)</b>	<b>GMSK</b>	<b>27.39</b>	<b>0.001</b>	<b>0.147</b>	<b>1.6</b>	<b>Pass</b>
		661	1880.0 (Mid)	GMSK	27.36	-	-	-	-
		810	1909.8 (High)	GMSK	27.21	-	-	-	-

**Remark:**

1. The largest summation of GSM and WLAN for head SAR is 0.385 W/Kg for scanner 1 and 0.632 W/Kg for scanner 2 and its position is right cheek.
2. The largest summation of GSM/GPRS and WLAN for body SAR is 0.633 W/Kg for scanner 1 and 0.891 W/Kg for scanner 2 and its position is keypad down with 1.5cm gap.

Test Engineer : John Tsai and Gordon Lin



---

## **12. References**

- [1] FCC 47 CFR Part 2 “Frequency Allocations and Radio Treaty Matters; General Rules and Regulations”
- [2] IEEE Std. P1528-2003, “Recommended Practice for Determining the Peak Spatial-Average Specific Absorption Rate (SAR) in the Human Head from Wireless Communications Devices: Measurement Techniques”, April 21, 2003
- [3] Supplement C (Edition 01-01) to OET Bulletin 65 (Edition 97-01), “Additional Information for Evaluating Compliance of Mobile and Portable Devices with FCC Limits for Human Exposure to RF Emissions”, June 2001
- [4] IEEE Std. C95.3-2002, “IEEE Recommended Practice for the Measurement of Potentially Hazardous Electromagnetic Fields-RF and Microwave”, 2002
- [5] IEEE Std. C95.1-1999, “IEEE Standard for Safety Levels with Respect to Human Exposure to Radio Frequency Electromagnetic Fields, 3 kHz to 300 GHz”, 1999
- [6] Robert J. Renka, “Multivariate Interpolation Of Large Sets Of Scattered Data”, University of North Texas ACM Transactions on Mathematical Software, vol. 14, no. 2, June 1988, pp. 139-148
- [7] DAYS4 System Handbook



## Appendix A - System Performance Check Data

Test Laboratory: Sporton International Inc. SAR Testing Lab

Date/Time: 12/25/2006 6:37:52 PM

**System Check\_Head\_835MHz\_20061225**

**DUT: Dipole 835 MHz**

Communication System: CW; Frequency: 835 MHz; Duty Cycle: 1:1

Medium: HSL\_850 Medium parameters used:  $f = 835$  MHz;  $\sigma = 0.895$  mho/m;  $\epsilon_r = 42.9$ ;  $\rho = 1000$  kg/m<sup>3</sup>

Ambient Temperature : 21.8 °C; Liquid Temperature : 21.1 °C

DASY4 Configuration:

- Probe: ET3DV6 - SN1788; ConvF(6.6, 6.6, 6.6); Calibrated: 9/19/2006
- Sensor-Surface: 4mm (Mechanical And Optical Surface Detection) Sensor-Surface: 4mm (Mechanical Surface Detection)
- Electronics: DAE3 Sn577; Calibrated: 11/21/2006
- Phantom: SAM-B; Type: QD 000 P40 C; Serial: TP-1383
- Measurement SW: DASY4, V4.7 Build 44; Postprocessing SW: SEMCAD, V1.8 Build 171

**Pin=100mW/Area Scan (61x61x1):** Measurement grid: dx=15mm, dy=15mm

Maximum value of SAR (interpolated) = 1.06 mW/g

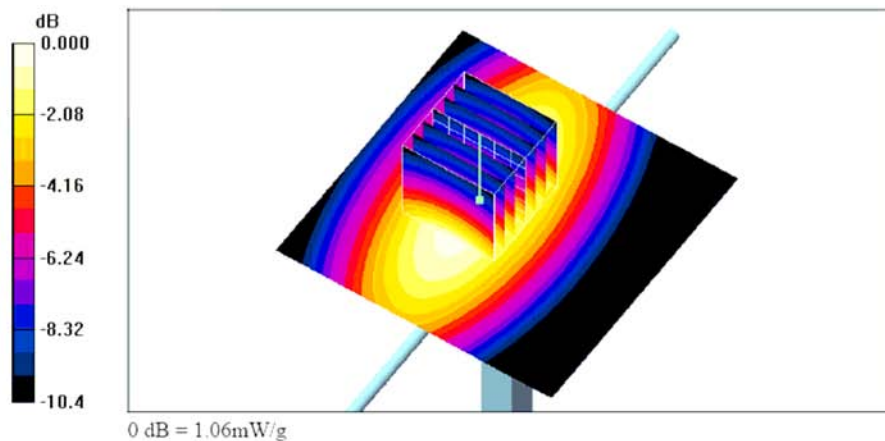
**Pin=100mW/Zoom Scan (7x7x7)/Cube 0:** Measurement grid: dx=5mm, dy=5mm, dz=5mm

Reference Value = 32.7 V/m; Power Drift = -0.028 dB

Peak SAR (extrapolated) = 1.44 W/kg

SAR(1 g) = 0.973 mW/g; SAR(10 g) = 0.637 mW/g

Maximum value of SAR (measured) = 1.06 mW/g





## FCC SAR Test Report

Test Report No : FA6N2811-3-2-01

Test Laboratory: Sporton International Inc. SAR Testing Lab

Date/Time: 1/2/2007 10:34:22 AM

### System Check\_Head\_835MHz\_20060102

#### DUT: Dipole 835 MHz

Communication System: CW; Frequency: 835 MHz; Duty Cycle: 1:1

Medium: HSL\_850 Medium parameters used:  $f = 835$  MHz;  $\sigma = 0.899$  mho/m;  $\epsilon_r = 43.1$ ;  $\rho = 1000$  kg/m<sup>3</sup>

Ambient Temperature : 20.9 °C; Liquid Temperature : 20.4 °C

#### DASY4 Configuration:

- Probe: ET3DV6 - SN1788; ConvF(6.6, 6.6, 6.6); Calibrated: 9/19/2006
- Sensor-Surface: 4mm (Mechanical And Optical Surface Detection) Sensor-Surface: 4mm (Mechanical Surface Detection)
- Electronics: DAE3 Sn577; Calibrated: 11/21/2006
- Phantom: SAM-B; Type: QD 000 P40 C; Serial: TP-1383
- Measurement SW: DASY4, V4.7 Build 44; Postprocessing SW: SEMCAD, V1.8 Build 171

**Pin=100mW/Area Scan (61x61x1):** Measurement grid: dx=15mm, dy=15mm

Maximum value of SAR (interpolated) = 1.05 mW/g

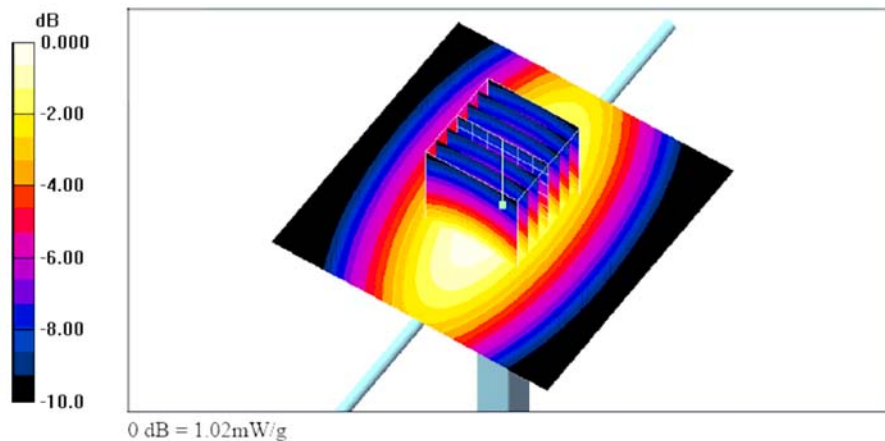
**Pin=100mW/Zoom Scan (7x7x7)/Cube 0:** Measurement grid: dx=5mm, dy=5mm, dz=5mm

Reference Value = 35.6 V/m; Power Drift = -0.016 dB

Peak SAR (extrapolated) = 1.40 W/kg

SAR(1 g) = 0.947 mW/g; SAR(10 g) = 0.627 mW/g

Maximum value of SAR (measured) = 1.02 mW/g





## FCC SAR Test Report

Test Report No : FA6N2811-3-2-01

Test Laboratory: Sporton International Inc. SAR Testing Lab

Date/Time: 12/26/2006 7:39:24 PM

### System Check\_Head\_1900MHz\_20061226

#### DUT: Dipole 1900 MHz

Communication System: CW; Frequency: 1900 MHz; Duty Cycle: 1:1

Medium: HSL\_1900 Medium parameters used:  $f = 1900$  MHz;  $\sigma = 1.46$  mho/m;  $\epsilon_r = 41.3$ ;  $\rho = 1000$  kg/m<sup>3</sup>

Ambient Temperature : 22.1 °C; Liquid Temperature : 21.0 °C

#### DASY4 Configuration:

- Probe: ET3DV6 - SN1788; ConvF(5.3, 5.3, 5.3); Calibrated: 9/19/2006
- Sensor-Surface: 4mm (Mechanical And Optical Surface Detection) Sensor-Surface: 4mm (Mechanical Surface Detection)
- Electronics: DAE3 Sn577; Calibrated: 11/21/2006
- Phantom: SAM-B; Type: QD 000 P40 C; Serial: TP-1383
- Measurement SW: DASY4, V4.7 Build 44; Postprocessing SW: SEMCAD, V1.8 Build 171

**Pin=100mW/Area Scan (91x91x1):** Measurement grid: dx=10mm, dy=10mm

Maximum value of SAR (interpolated) = 4.39 mW/g

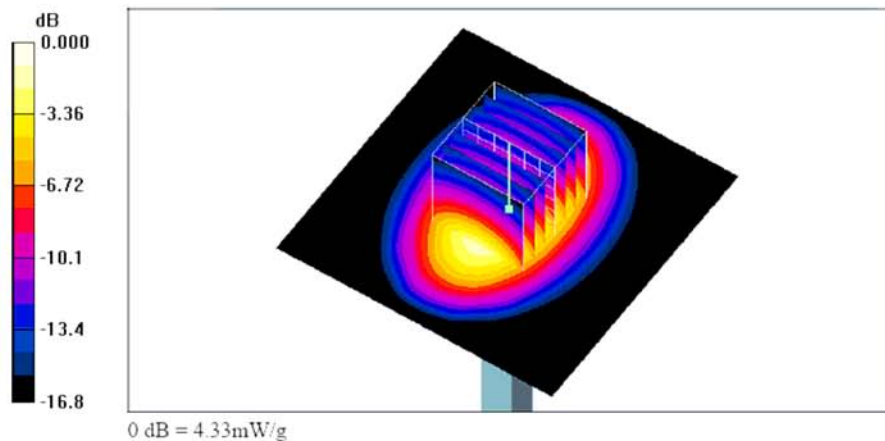
**Pin=100mW/Zoom Scan (7x7x7)/Cube 0:** Measurement grid: dx=5mm, dy=5mm, dz=5mm

Reference Value = 57.8 V/m; Power Drift = 0.019 dB

Peak SAR (extrapolated) = 6.36 W/kg

SAR(1 g) = 3.81 mW/g; SAR(10 g) = 2.05 mW/g

Maximum value of SAR (measured) = 4.33 mW/g





## FCC SAR Test Report

Test Report No : FA6N2811-3-2-01

Test Laboratory: Sporton International Inc. SAR Testing Lab

Date/Time: 1/2/2007 11:39:18 AM

### System Check\_Head\_1900MHz\_20070102

#### DUT: Dipole 1900 MHz

Communication System: CW; Frequency: 1900 MHz; Duty Cycle: 1:1

Medium: HSL\_1900 Medium parameters used:  $f = 1900$  MHz;  $\sigma = 1.46$  mho/m;  $\epsilon_r = 41.2$ ;  $\rho = 1000$  kg/m<sup>3</sup>

Ambient Temperature : 21.1 °C; Liquid Temperature : 20.6 °C

#### DASY4 Configuration:

- Probe: ET3DV6 - SN1788; ConvF(5.3, 5.3, 5.3); Calibrated: 9/19/2006
- Sensor-Surface: 4mm (Mechanical And Optical Surface Detection) Sensor-Surface: 4mm (Mechanical Surface Detection)
- Electronics: DAE3 Sn577; Calibrated: 11/21/2006
- Phantom: SAM-A; Type: QD 000 P40 C; Serial: TP-1303
- Measurement SW: DASY4, V4.7 Build 44; Postprocessing SW: SEMCAD, V1.8 Build 171

**Pin=100mW/Area Scan (91x91x1):** Measurement grid: dx=10mm, dy=10mm

Maximum value of SAR (interpolated) = 4.39 mW/g

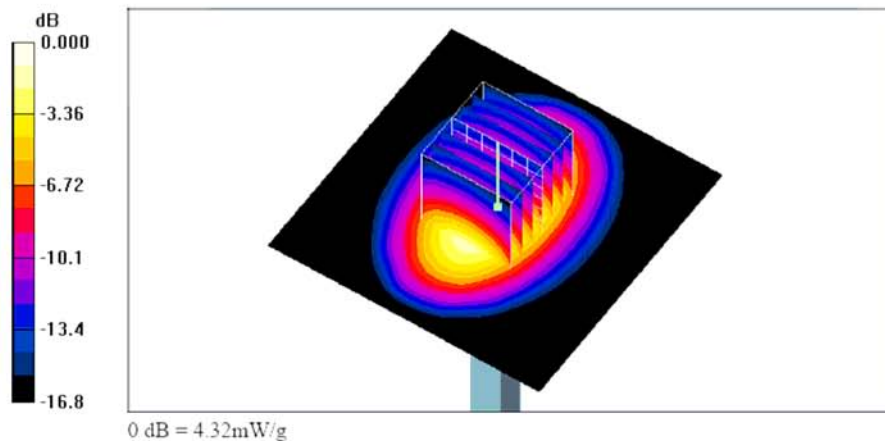
**Pin=100mW/Zoom Scan (7x7x7)/Cube 0:** Measurement grid: dx=5mm, dy=5mm, dz=5mm

Reference Value = 57.8 V/m; Power Drift = 0.019 dB

Peak SAR (extrapolated) = 6.35 W/kg

SAR(1 g) = 3.8 mW/g; SAR(10 g) = 2.05 mW/g

Maximum value of SAR (measured) = 4.32 mW/g





## FCC SAR Test Report

Test Report No : FA6N2811-3-2-01

Test Laboratory: Sporton International Inc. SAR Testing Lab

Date/Time: 12/26/2006 11:27:29 PM

System Check\_Body\_835MHz\_20061226

DUT: Dipole 835 MHz

Communication System: CW; Frequency: 835 MHz; Duty Cycle: 1:1

Medium: MSL\_850 Medium parameters used:  $f = 835$  MHz;  $\sigma = 0.975$  mho/m;  $\epsilon_r = 56.6$ ;  $\rho = 1000$  kg/m<sup>3</sup>

Ambient Temperature : 22.4 °C; Liquid Temperature : 21.1 °C

DASY4 Configuration:

- Probe: ET3DV6 - SN1788; ConvF(6.33, 6.33, 6.33); Calibrated: 9/19/2006
- Sensor-Surface: 4mm (Mechanical And Optical Surface Detection) Sensor-Surface: 4mm (Mechanical Surface Detection)
- Electronics: DAE3 Sn577; Calibrated: 11/21/2006
- Phantom: SAM-A; Type: QD 000 P40 C; Serial: TP-1303
- Measurement SW: DASY4, V4.7 Build 44; Postprocessing SW: SEMCAD, V1.8 Build 171

Pin=100mW/Area Scan (61x61x1); Measurement grid: dx=15mm, dy=15mm

Maximum value of SAR (interpolated) = 1.05 mW/g

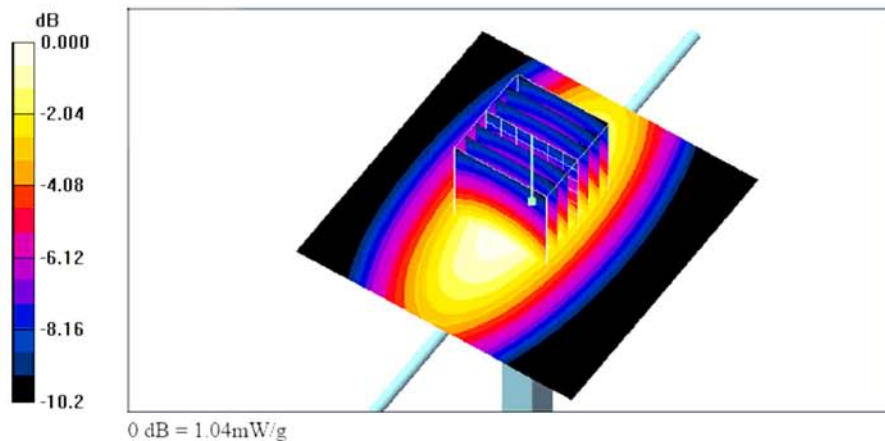
Pin=100mW/Zoom Scan (7x7x7)/Cube 0: Measurement grid: dx=5mm, dy=5mm, dz=5mm

Reference Value = 33.8 V/m; Power Drift = -0.025 dB

Peak SAR (extrapolated) = 1.40 W/kg

SAR(1 g) = 0.962 mW/g; SAR(10 g) = 0.633 mW/g

Maximum value of SAR (measured) = 1.04 mW/g







## FCC SAR Test Report

Test Report No : FA6N2811-3-2-01

Test Laboratory: Sporton International Inc. SAR Testing Lab

Date/Time: 1/3/2007 10:28:20 AM

System Check\_Body\_835MHz\_20070103

DUT: Dipole 835 MHz

Communication System: CW; Frequency: 835 MHz; Duty Cycle: 1:1

Medium: MSL\_850 Medium parameters used:  $f = 835$  MHz;  $\sigma = 0.973$  mho/m;  $\epsilon_r = 56.7$ ;  $\rho = 1000$  kg/m<sup>3</sup>

Ambient Temperature : 20.9 °C; Liquid Temperature : 20.4 °C

DASY4 Configuration:

- Probe: ET3DV6 - SN1788; ConvF(6.33, 6.33, 6.33); Calibrated: 9/19/2006
- Sensor-Surface: 4mm (Mechanical And Optical Surface Detection) Sensor-Surface: 4mm (Mechanical Surface Detection)
- Electronics: DAE3 Sn577; Calibrated: 11/21/2006
- Phantom: SAM-A; Type: QD 000 P40 C; Serial: TP-1303
- Measurement SW: DASY4, V4.7 Build 44; Postprocessing SW: SEMCAD, V1.8 Build 171

Pin=100mW/Area Scan (41x41x1): Measurement grid: dx=20mm, dy=20mm

Maximum value of SAR (interpolated) = 0.979 mW/g

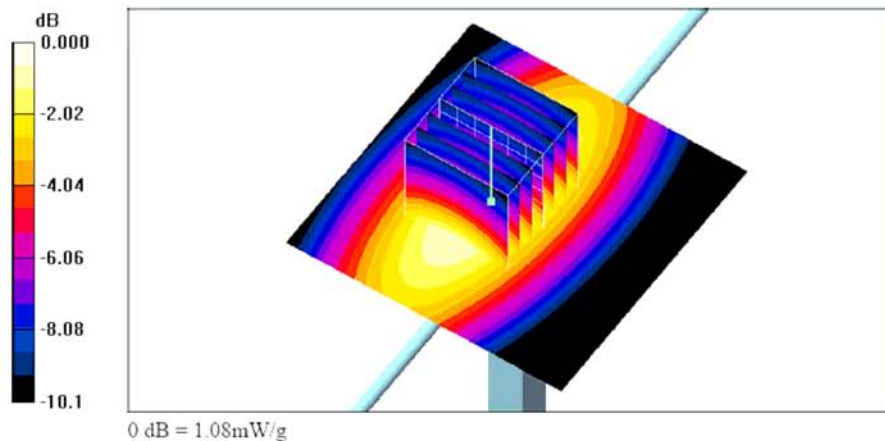
Pin=100mW/Zoom Scan (7x7x7)/Cube 0: Measurement grid: dx=5mm, dy=5mm, dz=5mm

Reference Value = 31.4 V/m; Power Drift = -0.023 dB

Peak SAR (extrapolated) = 1.44 W/kg

SAR(1 g) = 1 mW/g; SAR(10 g) = 0.659 mW/g

Maximum value of SAR (measured) = 1.08 mW/g







## FCC SAR Test Report

Test Report No : FA6N2811-3-2-01

Test Laboratory: Sporton International Inc. SAR Testing Lab

Date/Time: 12/27/2006 1:58:29 AM

System Check\_Body\_1900MHz\_20061227

DUT: Dipole 1900 MHz

Communication System: CW; Frequency: 1900 MHz; Duty Cycle: 1:1

Medium: MSL\_1900 Medium parameters used:  $f = 1900$  MHz;  $\sigma = 1.54$  mho/m;  $\epsilon_r = 52.3$ ;  $\rho = 1000$  kg/m<sup>3</sup>

Ambient Temperature : 22.0 °C; Liquid Temperature : 20.9 °C

DASY4 Configuration:

- Probe: ET3DV6 - SN1788; ConvF(4.67, 4.67, 4.67); Calibrated: 9/19/2006
- Sensor-Surface: 4mm (Mechanical And Optical Surface Detection) Sensor-Surface: 4mm (Mechanical Surface Detection)
- Electronics: DAE3 Sn577; Calibrated: 11/21/2006
- Phantom: SAM-B; Type: QD 000 P40 C; Serial: TP-1383
- Measurement SW: DASY4, V4.7 Build 44; Postprocessing SW: SEMCAD, V1.8 Build 171

Pin=100mW/Area Scan (91x91x1): Measurement grid: dx=10mm, dy=10mm

Maximum value of SAR (interpolated) = 4.60 mW/g

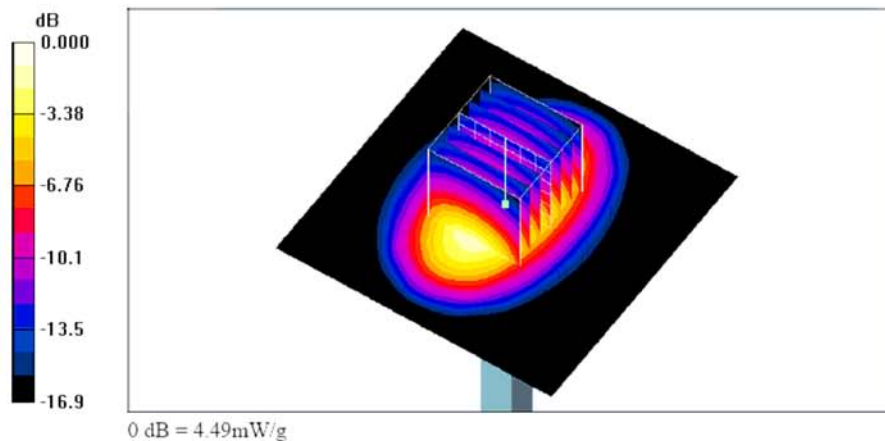
Pin=100mW/Zoom Scan (7x7x7)/Cube 0: Measurement grid: dx=5mm, dy=5mm, dz=5mm

Reference Value = 57.4 V/m; Power Drift = 0.018 dB

Peak SAR (extrapolated) = 6.34 W/kg

SAR(1 g) = 3.9 mW/g; SAR(10 g) = 2.09 mW/g

Maximum value of SAR (measured) = 4.49 mW/g





## FCC SAR Test Report

Test Report No : FA6N2811-3-2-01

Test Laboratory: Sporton International Inc. SAR Testing Lab

Date/Time: 1/3/2007 1:32:14 PM

### System Check\_Body\_1900MHz\_20070103

#### DUT: Dipole 1900 MHz

Communication System: CW; Frequency: 1900 MHz; Duty Cycle: 1:1

Medium: MSL\_1900 Medium parameters used:  $f = 1900$  MHz;  $\sigma = 1.55$  mho/m;  $\epsilon_r = 52.9$ ;  $\rho = 1000$  kg/m<sup>3</sup>

Ambient Temperature : 20.8 °C; Liquid Temperature : 20.5 °C

#### DASY4 Configuration:

- Probe: ET3DV6 - SN1788; ConvF(4.67, 4.67, 4.67); Calibrated: 9/19/2006
- Sensor-Surface: 4mm (Mechanical And Optical Surface Detection) Sensor-Surface: 4mm (Mechanical Surface Detection)
- Electronics: DAE3 Sn577; Calibrated: 11/21/2006
- Phantom: SAM-B; Type: QD 000 P40 C; Serial: TP-1383
- Measurement SW: DASY4, V4.7 Build 44; Postprocessing SW: SEMCAD, V1.8 Build 171

**Pin=100mW/Area Scan (91x91x1):** Measurement grid: dx=10mm, dy=10mm

Maximum value of SAR (interpolated) = 4.57 mW/g

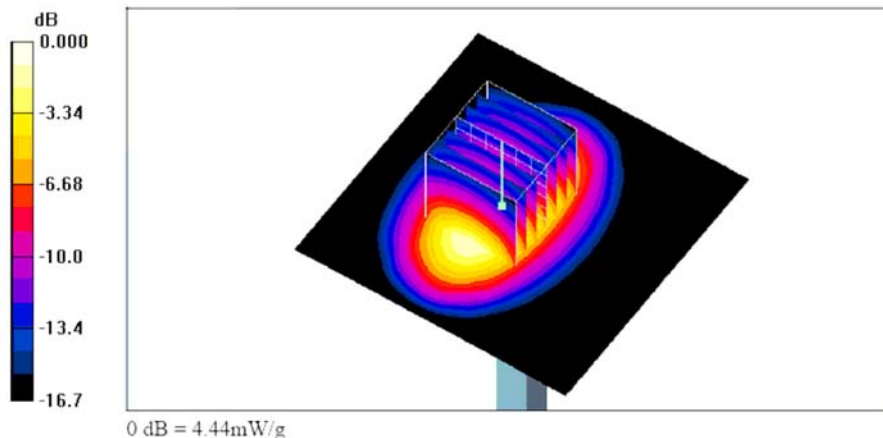
**Pin=100mW/Zoom Scan (7x7x7)/Cube 0:** Measurement grid: dx=5mm, dy=5mm, dz=5mm

Reference Value = 52.2 V/m; Power Drift = -0.010 dB

Peak SAR (extrapolated) = 6.28 W/kg

SAR(1 g) = 3.88 mW/g; SAR(10 g) = 2.08 mW/g

Maximum value of SAR (measured) = 4.44 mW/g





## Appendix B - SAR Measurement Data

Test Laboratory: Sporton International Inc. SAR Testing Lab

Date/Time: 12/25/2006 11:03:40 PM

**Right Cheek\_GSM850 Ch251\_20061225\_Scanner 1**

**DUT: 6N2811**

Communication System: GSM850; Frequency: 848.8 MHz; Duty Cycle: 1:8.3

Medium: HSL\_850 Medium parameters used:  $f = 849$  MHz;  $\sigma = 0.909$  mho/m;  $\epsilon_r = 42.7$ ;  $\rho = 1000$  kg/m<sup>3</sup>

Ambient Temperature : 22.3 °C; Liquid Temperature : 21.1 °C

DASY4 Configuration:

- Probe: ET3DV6 - SN1788; ConvF(6.6, 6.6, 6.6); Calibrated: 9/19/2006
- Sensor-Surface: 4mm (Mechanical And Optical Surface Detection)
- Electronics: DAE3 Sn577; Calibrated: 11/21/2006
- Phantom: SAM-B; Type: QD 000 P40 C; Serial: TP-1383
- Measurement SW: DASY4, V4.7 Build 44; Postprocessing SW: SEMCAD, V1.8 Build 171

**Ch251/Area Scan (51x101x1):** Measurement grid: dx=15mm, dy=15mm

Maximum value of SAR (interpolated) = 0.379 mW/g

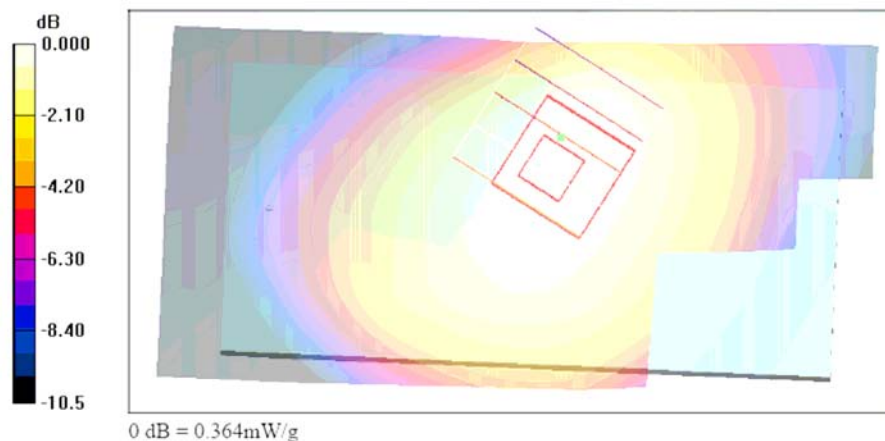
**Ch251/Zoom Scan (5x5x7)/Cube 0:** Measurement grid: dx=8mm, dy=8mm, dz=5mm

Reference Value = 9.83 V/m; Power Drift = -0.161 dB

Peak SAR (extrapolated) = 0.491 W/kg

SAR(1 g) = 0.350 mW/g; SAR(10 g) = 0.272 mW/g

Maximum value of SAR (measured) = 0.364 mW/g





## FCC SAR Test Report

Test Report No : FA6N2811-3-2-01

Test Laboratory: Sporton International Inc. SAR Testing Lab

Date/Time: 12/25/2006 11:27:00 PM

**Right Cheek\_GSM850 Ch251\_20061225\_Scanner 1\_Bluetooth On**

**DUT: 6N2811**

Communication System: GSM850; Frequency: 848.8 MHz; Duty Cycle: 1:8.3

Medium: HSL\_850 Medium parameters used:  $f = 849$  MHz;  $\sigma = 0.909$  mho/m;  $\epsilon_r = 42.7$ ;  $\rho = 1000$  kg/m<sup>3</sup>

Ambient Temperature : 22.1 °C; Liquid Temperature : 21.1 °C

DASY4 Configuration:

- Probe: ET3DV6 - SN1788; ConvF(6.6, 6.6, 6.6); Calibrated: 9/19/2006
- Sensor-Surface: 4mm (Mechanical And Optical Surface Detection)
- Electronics: DAE3 Sn577; Calibrated: 11/21/2006
- Phantom: SAM-B; Type: QD 000 P40 C; Serial: TP-1383
- Measurement SW: DASY4, V4.7 Build 44; Postprocessing SW: SEMCAD, V1.8 Build 171

**Ch251/Area Scan (51x101x1):** Measurement grid: dx=15mm, dy=15mm

Maximum value of SAR (interpolated) = 0.353 mW/g

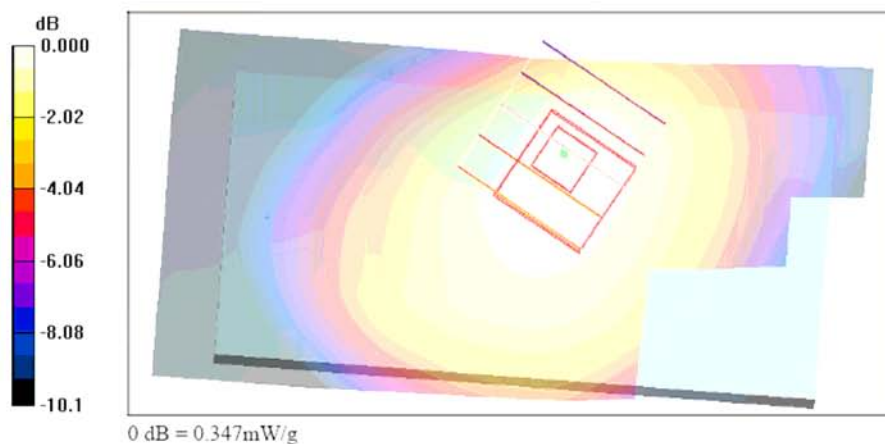
**Ch251/Zoom Scan (5x5x7)/Cube 0:** Measurement grid: dx=8mm, dy=8mm, dz=5mm

Reference Value = 9.19 V/m; Power Drift = -0.108 dB

Peak SAR (extrapolated) = 0.459 W/kg

SAR(1 g) = 0.327 mW/g; SAR(10 g) = 0.252 mW/g

Maximum value of SAR (measured) = 0.347 mW/g





## FCC SAR Test Report

Test Report No : FA6N2811-3-2-01

Test Laboratory: Sporton International Inc. SAR Testing Lab

Date/Time: 1/2/2007 9:05:49 PM

### Right Cheek\_GSM850 Ch251\_20070102\_Scanner 2

DUT: 6N2811

Communication System: GSM850; Frequency: 848.8 MHz; Duty Cycle: 1:8.3

Medium: HSL\_850 Medium parameters used:  $f = 849$  MHz;  $\sigma = 0.912$  mho/m;  $\epsilon_r = 42.9$ ;  $\rho = 1000$  kg/m<sup>3</sup>

Ambient Temperature : 20.9 °C; Liquid Temperature : 20.4 °C

DASY4 Configuration:

- Probe: ET3DV6 - SN1788; ConvF(6.6, 6.6, 6.6); Calibrated: 9/19/2006
- Sensor-Surface: 4mm (Mechanical And Optical Surface Detection)
- Electronics: DAE3 Sn577; Calibrated: 11/21/2006
- Phantom: SAM-B; Type: QD 000 P40 C; Serial: TP-1383
- Measurement SW: DASY4, V4.7 Build 44; Postprocessing SW: SEMCAD, V1.8 Build 171

**Ch251/Area Scan (51x101x1):** Measurement grid: dx=15mm, dy=15mm

Maximum value of SAR (interpolated) = 0.655 mW/g

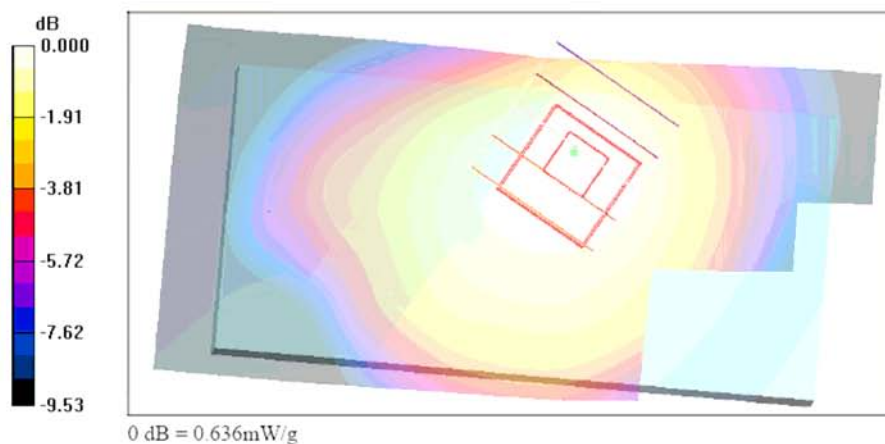
**Ch251/Zoom Scan (5x5x7)/Cube 0:** Measurement grid: dx=8mm, dy=8mm, dz=5mm

Reference Value = 15.7 V/m; Power Drift = -0.136 dB

Peak SAR (extrapolated) = 0.784 W/kg

SAR(1 g) = 0.605 mW/g; SAR(10 g) = 0.467 mW/g

Maximum value of SAR (measured) = 0.636 mW/g





## FCC SAR Test Report

Test Report No : FA6N2811-3-2-01

Test Laboratory: Sporton International Inc. SAR Testing Lab

Date/Time: 12/25/2006 9:55:50 PM

### Right Tilted\_GSM850 Ch189\_20061225\_Scanner 1

DUT: 6N2811

Communication System: GSM850; Frequency: 836.4 MHz; Duty Cycle: 1:8.3

Medium: HSL\_850 Medium parameters used :  $f = 836.4$  MHz;  $\sigma = 0.896$  mho/m;  $\epsilon_r = 42.9$ ;  $\rho = 1000$  kg/m<sup>3</sup>

Ambient Temperature : 22.2 °C; Liquid Temperature : 21.1 °C

DASY4 Configuration:

- Probe: ET3DV6 - SN1788; ConvF(6.6, 6.6, 6.6); Calibrated: 9/19/2006
- Sensor-Surface: 4mm (Mechanical And Optical Surface Detection)
- Electronics: DAE3 Sn577; Calibrated: 11/21/2006
- Phantom: SAM-B; Type: QD 000 P40 C; Serial: TP-1383
- Measurement SW: DASY4, V4.7 Build 44; Postprocessing SW: SEMCAD, V1.8 Build 171

Ch189/Area Scan (51x101x1): Measurement grid: dx=15mm, dy=15mm

Maximum value of SAR (interpolated) = 0.213 mW/g

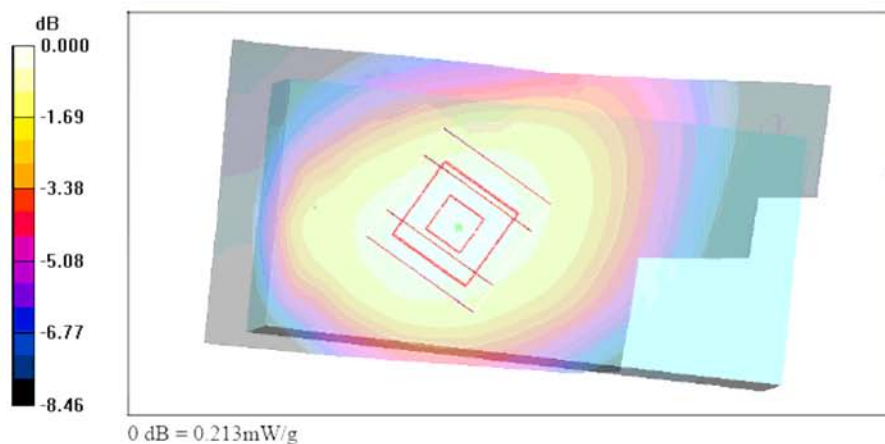
Ch189/Zoom Scan (5x5x7)/Cube 0: Measurement grid: dx=8mm, dy=8mm, dz=5mm

Reference Value = 12.8 V/m; Power Drift = -0.083 dB

Peak SAR (extrapolated) = 0.246 W/kg

SAR(1 g) = 0.202 mW/g; SAR(10 g) = 0.156 mW/g

Maximum value of SAR (measured) = 0.213 mW/g







## FCC SAR Test Report

Test Report No : FA6N2811-3-2-01

Test Laboratory: Sporton International Inc. SAR Testing Lab

Date/Time: 12/25/2006 10:13:44 PM

**Left Cheek\_GSM850 Ch189\_20061225\_Scanner 1**

**DUT: 6N2811**

Communication System: GSM850; Frequency: 836.4 MHz; Duty Cycle: 1:8.3

Medium: HSL\_850 Medium parameters used :  $f = 836.4$  MHz;  $\sigma = 0.896$  mho/m;  $\epsilon_r = 42.9$ ;  $\rho = 1000$  kg/m<sup>3</sup>

Ambient Temperature : 22.4 °C; Liquid Temperature : 21.1 °C

DASY4 Configuration:

- Probe: ET3DV6 - SN1788; ConvF(6.6, 6.6, 6.6); Calibrated: 9/19/2006
- Sensor-Surface: 4mm (Mechanical And Optical Surface Detection)
- Electronics: DAE3 Sn577; Calibrated: 11/21/2006
- Phantom: SAM-B; Type: QD 000 P40 C; Serial: TP-1383
- Measurement SW: DASY4, V4.7 Build 44; Postprocessing SW: SEMCAD, V1.8 Build 171

**Ch189/Area Scan (51x101x1):** Measurement grid: dx=15mm, dy=15mm

Maximum value of SAR (interpolated) = 0.271 mW/g

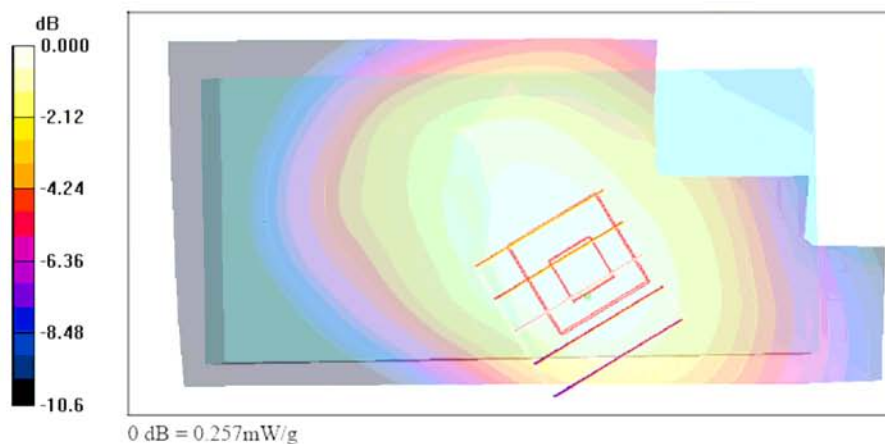
**Ch189/Zoom Scan (5x5x7)/Cube 0:** Measurement grid: dx=8mm, dy=8mm, dz=5mm

Reference Value = 7.89 V/m; Power Drift = -0.104 dB

Peak SAR (extrapolated) = 0.330 W/kg

SAR(1 g) = 0.246 mW/g; SAR(10 g) = 0.191 mW/g

Maximum value of SAR (measured) = 0.257 mW/g





## FCC SAR Test Report

Test Report No : FA6N2811-3-2-01

Test Laboratory: Sporton International Inc. SAR Testing Lab

Date/Time: 12/25/2006 10:28:08 PM

### Left Tilted\_GSM850 Ch189\_20061225\_Scanner 1

DUT: 6N2811

Communication System: GSM850; Frequency: 836.4 MHz; Duty Cycle: 1:8.3

Medium: HSL\_850 Medium parameters used :  $f = 836.4$  MHz;  $\sigma = 0.896$  mho/m;  $\epsilon_r = 42.9$ ;  $\rho = 1000$  kg/m<sup>3</sup>

Ambient Temperature : 22.4 °C; Liquid Temperature : 21.1 °C

DASY4 Configuration:

- Probe: ET3DV6 - SN1788; ConvF(6.6, 6.6, 6.6); Calibrated: 9/19/2006
- Sensor-Surface: 4mm (Mechanical And Optical Surface Detection)
- Electronics: DAE3 Sn577; Calibrated: 11/21/2006
- Phantom: SAM-B; Type: QD 000 P40 C; Serial: TP-1383
- Measurement SW: DASY4, V4.7 Build 44; Postprocessing SW: SEMCAD, V1.8 Build 171

Ch189/Area Scan (51x101x1): Measurement grid: dx=15mm, dy=15mm

Maximum value of SAR (interpolated) = 0.197 mW/g

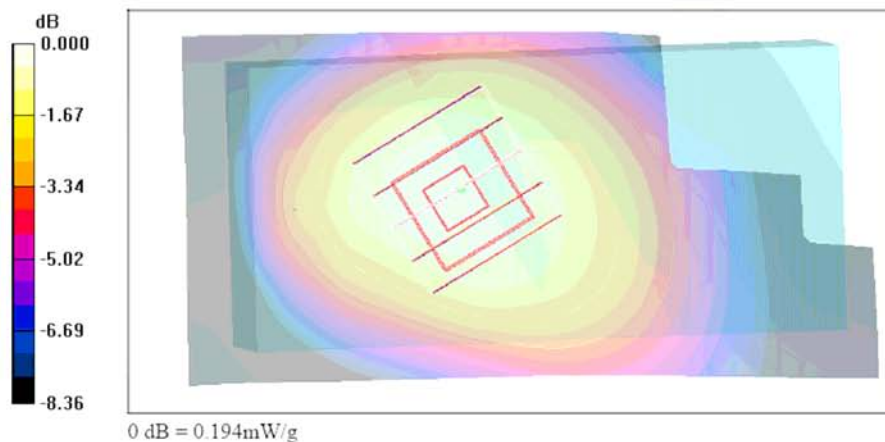
Ch189/Zoom Scan (5x5x7)/Cube 0: Measurement grid: dx=8mm, dy=8mm, dz=5mm

Reference Value = 11.9 V/m; Power Drift = -0.049 dB

Peak SAR (extrapolated) = 0.223 W/kg

SAR(1 g) = 0.185 mW/g; SAR(10 g) = 0.142 mW/g

Maximum value of SAR (measured) = 0.194 mW/g







## FCC SAR Test Report

Test Report No : FA6N2811-3-2-01

Test Laboratory: Sporton International Inc. SAR Testing Lab

Date/Time: 12/26/2006 8:52:59 PM

### Right Cheek\_PCS Ch661\_20061226\_Scanner 1

DUT: 6N2811

Communication System: PCS; Frequency: 1880 MHz; Duty Cycle: 1:8.3

Medium: HSL\_1900 Medium parameters used:  $f = 1880$  MHz;  $\sigma = 1.45$  mho/m;  $\epsilon_r = 41.6$ ;  $\rho = 1000$  kg/m<sup>3</sup>

Ambient Temperature : 22.1 °C; Liquid Temperature : 21.0 °C

DASY4 Configuration:

- Probe: ET3DV6 - SN1788; ConvF(5.3, 5.3, 5.3); Calibrated: 9/19/2006
- Sensor-Surface: 4mm (Mechanical And Optical Surface Detection)
- Electronics: DAE3 Sn577; Calibrated: 11/21/2006
- Phantom: SAM-B; Type: QD 000 P40 C; Serial: TP-1383
- Measurement SW: DASY4, V4.7 Build 44; Postprocessing SW: SEMCAD, V1.8 Build 171

**Ch661/Area Scan (51x101x1):** Measurement grid: dx=15mm, dy=15mm

Maximum value of SAR (interpolated) = 0.150 mW/g

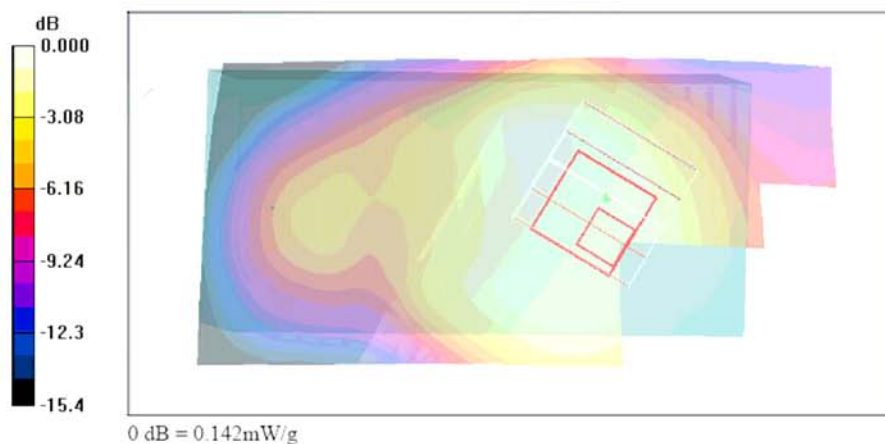
**Ch661/Zoom Scan (5x5x7)/Cube 0:** Measurement grid: dx=8mm, dy=8mm, dz=5mm

Reference Value = 6.19 V/m; Power Drift = -0.082 dB

Peak SAR (extrapolated) = 0.180 W/kg

SAR(1 g) = 0.134 mW/g; SAR(10 g) = 0.093 mW/g

Maximum value of SAR (measured) = 0.142 mW/g





## FCC SAR Test Report

Test Report No : FA6N2811-3-2-01

Test Laboratory: Sporton International Inc. SAR Testing Lab

Date/Time: 12/26/2006 9:07:33 PM

### Right Tilted\_PCS Ch661\_20061226\_Scanner 1

DUT: 6N2811

Communication System: PCS; Frequency: 1880 MHz; Duty Cycle: 1:8.3

Medium: HSL\_1900 Medium parameters used:  $f = 1880$  MHz;  $\sigma = 1.45$  mho/m;  $\epsilon_r = 41.6$ ;  $\rho = 1000$  kg/m<sup>3</sup>

Ambient Temperature : 22.4 °C; Liquid Temperature : 21.0 °C

DASY4 Configuration:

- Probe: ET3DV6 - SN1788; ConvF(5.3, 5.3, 5.3); Calibrated: 9/19/2006
- Sensor-Surface: 4mm (Mechanical And Optical Surface Detection)
- Electronics: DAE3 Sn577; Calibrated: 11/21/2006
- Phantom: SAM-B; Type: QD 000 P40 C; Serial: TP-1383
- Measurement SW: DASY4, V4.7 Build 44; Postprocessing SW: SEMCAD, V1.8 Build 171

**Ch661/Area Scan (51x101x1):** Measurement grid: dx=15mm, dy=15mm

Maximum value of SAR (interpolated) = 0.122 mW/g

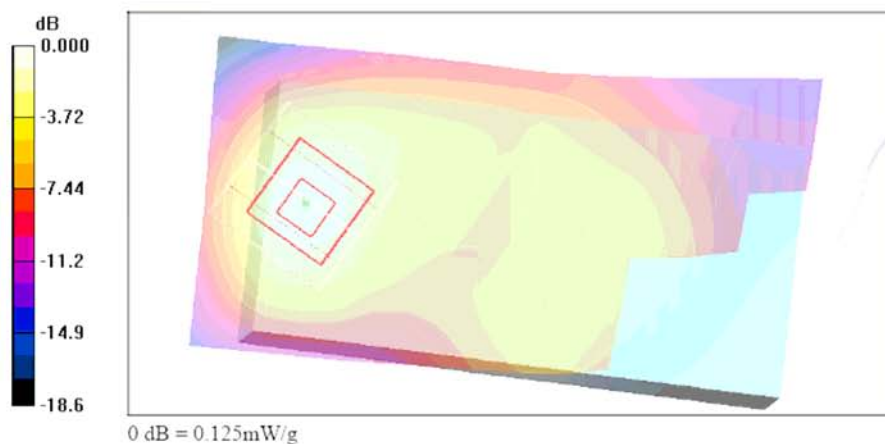
**Ch661/Zoom Scan (5x5x7)/Cube 0:** Measurement grid: dx=8mm, dy=8mm, dz=5mm

Reference Value = 9.89 V/m; Power Drift = -0.066 dB

Peak SAR (extrapolated) = 0.162 W/kg

SAR(1 g) = 0.111 mW/g; SAR(10 g) = 0.064 mW/g

Maximum value of SAR (measured) = 0.125 mW/g





## FCC SAR Test Report

Test Report No : FA6N2811-3-2-01

Test Laboratory: Sporton International Inc. SAR Testing Lab

Date/Time: 12/26/2006 10:03:19 PM

### Left Cheek\_PCS Ch512\_20061226\_Scanner 1

DUT: 6N2811

Communication System: PCS; Frequency: 1850.2 MHz; Duty Cycle: 1:8.3

Medium: HSL\_1900 Medium parameters used :  $f = 1850.2$  MHz;  $\sigma = 1.43$  mho/m;  $\epsilon_r = 41.6$ ;  $\rho = 1000$  kg/m<sup>3</sup>

Ambient Temperature : 22.6 °C; Liquid Temperature : 21.0 °C

DASY4 Configuration:

- Probe: ET3DV6 - SN1788; ConvF(5.3, 5.3, 5.3); Calibrated: 9/19/2006
- Sensor-Surface: 4mm (Mechanical And Optical Surface Detection)
- Electronics: DAE3 Sn577; Calibrated: 11/21/2006
- Phantom: SAM-B; Type: QD 000 P40 C; Serial: TP-1383
- Measurement SW: DASY4, V4.7 Build 44; Postprocessing SW: SEMCAD, V1.8 Build 171

Ch512/Area Scan (51x101x1): Measurement grid: dx=15mm, dy=15mm

Maximum value of SAR (interpolated) = 0.398 mW/g

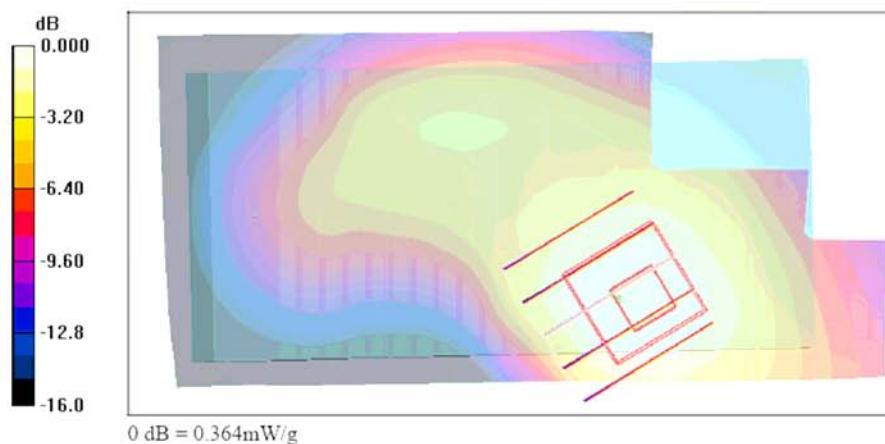
Ch512/Zoom Scan (5x5x7)/Cube 0: Measurement grid: dx=8mm, dy=8mm, dz=5mm

Reference Value = 7.33 V/m; Power Drift = -0.017 dB

Peak SAR (extrapolated) = 0.505 W/kg

SAR(1 g) = 0.348 mW/g; SAR(10 g) = 0.220 mW/g

Maximum value of SAR (measured) = 0.364 mW/g





## FCC SAR Test Report

Test Report No : FA6N2811-3-2-01

Test Laboratory: Sporton International Inc. SAR Testing Lab

Date/Time: 12/26/2006 10:38:01 PM

**Left Cheek\_PCS Ch512\_20061226\_Scanner 1\_Bluetooth On**

**DUT: 6N2811**

Communication System: PCS; Frequency: 1850.2 MHz; Duty Cycle: 1:8.3

Medium: HSL\_1900 Medium parameters used0 :  $f = 1850.2$  MHz;  $\sigma = 1.43$  mho/m;  $\epsilon_r = 41.6$ ;  $\rho = 1000$  kg/m<sup>3</sup>

Ambient Temperature : 21.7 °C; Liquid Temperature : 21.0 °C

DASY4 Configuration:

- Probe: ET3DV6 - SN1788; ConvF(5.3, 5.3, 5.3); Calibrated: 9/19/2006
- Sensor-Surface: 4mm (Mechanical And Optical Surface Detection)
- Electronics: DAE3 Sn577; Calibrated: 11/21/2006
- Phantom: SAM-B; Type: QD 000 P40 C; Serial: TP-1383
- Measurement SW: DASY4, V4.7 Build 44; Postprocessing SW: SEMCAD, V1.8 Build 171

**Ch512/Area Scan (51x101x1):** Measurement grid: dx=15mm, dy=15mm

Maximum value of SAR (interpolated) = 0.383 mW/g

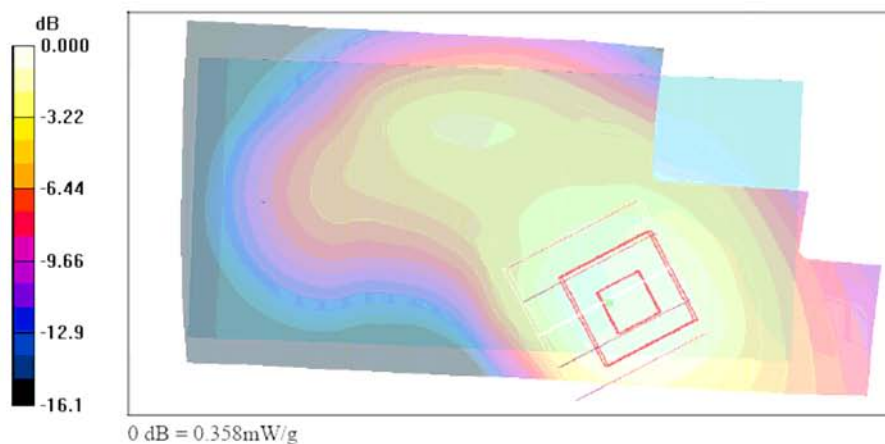
**Ch512/Zoom Scan (5x5x7)/Cube 0:** Measurement grid: dx=8mm, dy=8mm, dz=5mm

Reference Value = 7.28 V/m; Power Drift = -0.098 dB

Peak SAR (extrapolated) = 0.498 W/kg

SAR(1 g) = 0.340 mW/g; SAR(10 g) = 0.214 mW/g

Maximum value of SAR (measured) = 0.358 mW/g





## FCC SAR Test Report

Test Report No : FA6N2811-3-2-01

Test Laboratory: Sporton International Inc. SAR Testing Lab

Date/Time: 1/2/2007 11:52:13 PM

### Left Cheek\_PCS Ch512\_20070102\_Scanner 2

DUT: 6N2811

Communication System: PCS; Frequency: 1850.2 MHz; Duty Cycle: 1:8.3

Medium: HSL\_1900 Medium parameters used :  $f = 1850.2$  MHz;  $\sigma = 1.43$  mho/m;  $\epsilon_r = 41.6$ ;  $\rho = 1000$  kg/m<sup>3</sup>

Ambient Temperature : 21.0 °C; Liquid Temperature : 20.6 °C

DASY4 Configuration:

- Probe: ET3DV6 - SN1788; ConvF(5.3, 5.3, 5.3); Calibrated: 9/19/2006
- Sensor-Surface: 4mm (Mechanical And Optical Surface Detection)
- Electronics: DAE3 Sn577; Calibrated: 11/21/2006
- Phantom: SAM-A; Type: QD 000 P40 C; Serial: TP-1303
- Measurement SW: DASY4, V4.7 Build 44; Postprocessing SW: SEMCAD, V1.8 Build 171

Ch512/Area Scan (51x101x1): Measurement grid: dx=15mm, dy=15mm

Maximum value of SAR (interpolated) = 0.354 mW/g

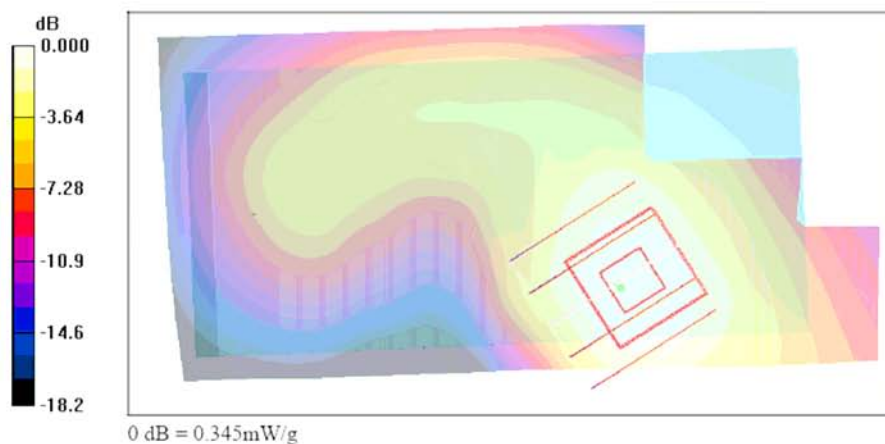
Ch512/Zoom Scan (5x5x7)/Cube 0: Measurement grid: dx=8mm, dy=8mm, dz=5mm

Reference Value = 8.66 V/m; Power Drift = -0.035 dB

Peak SAR (extrapolated) = 0.475 W/kg

SAR(1 g) = 0.320 mW/g; SAR(10 g) = 0.200 mW/g

Maximum value of SAR (measured) = 0.345 mW/g





## FCC SAR Test Report

Test Report No : FA6N2811-3-2-01

Test Laboratory: Sporton International Inc. SAR Testing Lab

Date/Time: 12/26/2006 9:44:08 PM

### Left Tilted\_PCS Ch661\_20061226\_Scanner 1

DUT: 6N2811

Communication System: PCS; Frequency: 1880 MHz; Duty Cycle: 1:8.3

Medium: HSL\_1900 Medium parameters used:  $f = 1880$  MHz;  $\sigma = 1.45$  mho/m;  $\epsilon_r = 41.6$ ;  $\rho = 1000$  kg/m<sup>3</sup>

Ambient Temperature : 21.8 °C; Liquid Temperature : 21.0 °C

DASY4 Configuration:

- Probe: ET3DV6 - SN1788; ConvF(5.3, 5.3, 5.3); Calibrated: 9/19/2006
- Sensor-Surface: 4mm (Mechanical And Optical Surface Detection)
- Electronics: DAE3 Sn577; Calibrated: 11/21/2006
- Phantom: SAM-B; Type: QD 000 P40 C; Serial: TP-1383
- Measurement SW: DASY4, V4.7 Build 44; Postprocessing SW: SEMCAD, V1.8 Build 171

**Ch661/Area Scan (51x101x1):** Measurement grid: dx=15mm, dy=15mm

Maximum value of SAR (interpolated) = 0.145 mW/g

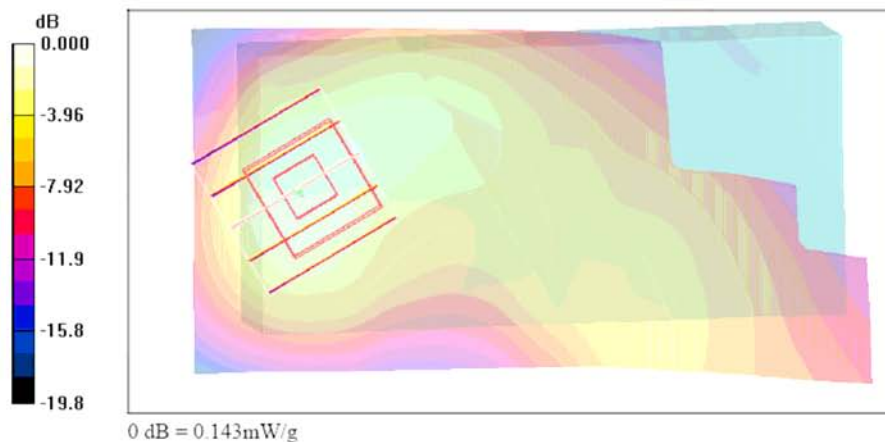
**Ch661/Zoom Scan (5x5x7)/Cube 0:** Measurement grid: dx=8mm, dy=8mm, dz=5mm

Reference Value = 10.7 V/m; Power Drift = -0.085 dB

Peak SAR (extrapolated) = 0.193 W/kg

SAR(1 g) = 0.132 mW/g; SAR(10 g) = 0.078 mW/g

Maximum value of SAR (measured) = 0.143 mW/g







## FCC SAR Test Report

Test Report No : FA6N2811-3-2-01

Test Laboratory: Sporton International Inc. SAR Testing Lab

Date/Time: 12/27/2006 2:55:38 AM

Body\_GSM850 Ch189\_Keypad Up with 1.5cm Gap\_20061227\_Scanner 1\_GPRS8

DUT: 6N2811

Communication System: GSM850; Frequency: 836.4 MHz; Duty Cycle: 1:8.3

Medium: MSL\_850 Medium parameters used :  $f = 836.4$  MHz;  $\sigma = 0.976$  mho/m;  $\epsilon_r = 56.6$ ;  $\rho = 1000$  kg/m<sup>3</sup>

Ambient Temperature : 22.0 °C; Liquid Temperature : 21.1 °C

DASY4 Configuration:

- Probe: ET3DV6 - SN1788; ConvF(6.33, 6.33, 6.33); Calibrated: 9/19/2006
- Sensor-Surface: 4mm (Mechanical And Optical Surface Detection)
- Electronics: DAE3 Sn577; Calibrated: 11/21/2006
- Phantom: SAM-A; Type: QD 000 P40 C; Serial: TP-1303
- Measurement SW: DASY4, V4.7 Build 44; Postprocessing SW: SEMCAD, V1.8 Build 171

Ch189/Area Scan (51x101x1): Measurement grid: dx=15mm, dy=15mm

Maximum value of SAR (interpolated) = 0.223 mW/g

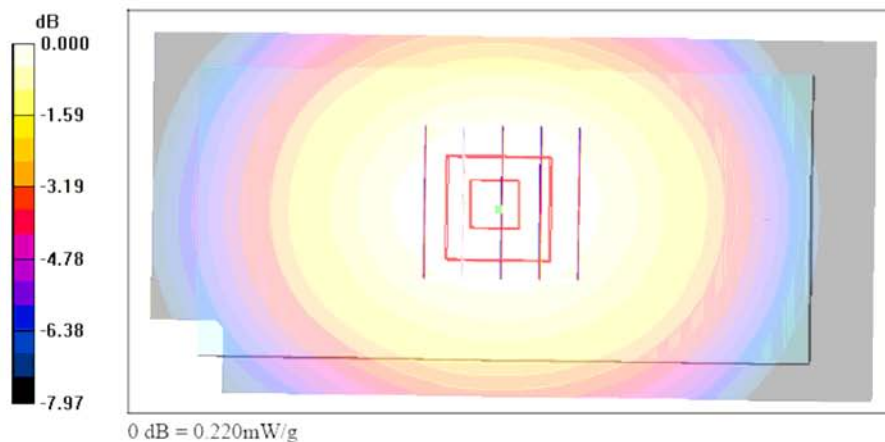
Ch189/Zoom Scan (5x5x7)/Cube 0: Measurement grid: dx=8mm, dy=8mm, dz=5mm

Reference Value = 9.23 V/m; Power Drift = -0.138 dB

Peak SAR (extrapolated) = 0.262 W/kg

SAR(1 g) = 0.209 mW/g; SAR(10 g) = 0.158 mW/g

Maximum value of SAR (measured) = 0.220 mW/g





## FCC SAR Test Report

Test Report No : FA6N2811-3-2-01

Test Laboratory: Sporton International Inc. SAR Testing Lab

Date/Time: 12/27/2006 2:37:52 AM

Body\_GSM850 Ch189\_Keypad Down with 1.5cm Gap\_20061227\_Scanner 1\_GPRS8

DUT: 6N2811

Communication System: GSM850; Frequency: 836.4 MHz; Duty Cycle: 1:8.3

Medium: MSL\_850 Medium parameters used :  $f = 836.4$  MHz;  $\sigma = 0.976$  mho/m;  $\epsilon_r = 56.6$ ;  $\rho = 1000$  kg/m<sup>3</sup>

Ambient Temperature : 22.6 °C; Liquid Temperature : 21.1 °C

DASY4 Configuration:

- Probe: ET3DV6 - SN1788; ConvF(6.33, 6.33, 6.33); Calibrated: 9/19/2006
- Sensor-Surface: 4mm (Mechanical And Optical Surface Detection)
- Electronics: DAE3 Sn577; Calibrated: 11/21/2006
- Phantom: SAM-A; Type: QD 000 P40 C; Serial: TP-1303
- Measurement SW: DASY4, V4.7 Build 44; Postprocessing SW: SEMCAD, V1.8 Build 171

Ch189/Area Scan (51x101x1): Measurement grid: dx=15mm, dy=15mm

Maximum value of SAR (interpolated) = 0.386 mW/g

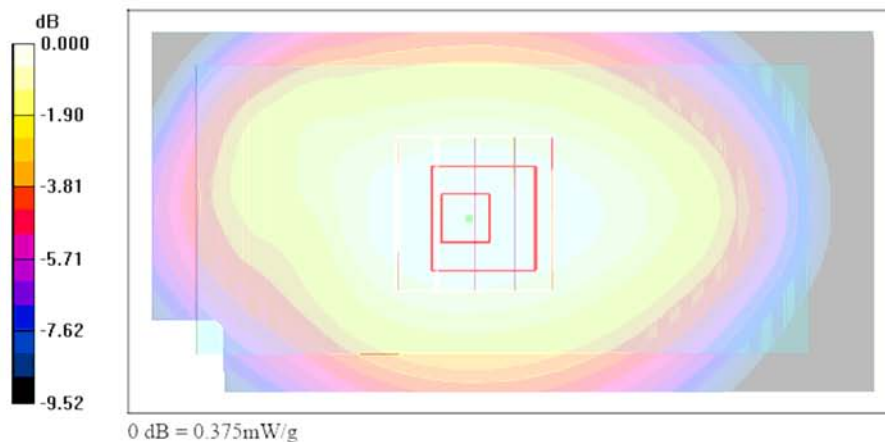
Ch189/Zoom Scan (5x5x7)/Cube 0: Measurement grid: dx=8mm, dy=8mm, dz=5mm

Reference Value = 11.4 V/m; Power Drift = -0.110 dB

Peak SAR (extrapolated) = 0.465 W/kg

SAR(1 g) = 0.358 mW/g; SAR(10 g) = 0.264 mW/g

Maximum value of SAR (measured) = 0.375 mW/g







## FCC SAR Test Report

Test Report No : FA6N2811-3-2-01

Test Laboratory: Sporton International Inc. SAR Testing Lab

Date/Time: 12/27/2006 6:02:18 AM

Body\_GSM850 Ch251\_Keypad Down with 1.5cm Gap\_20061227\_Scanner 1\_GPRS10

DUT: 6N2811

Communication System: GSM850; Frequency: 848.8 MHz; Duty Cycle: 1:4

Medium: MSL\_850 Medium parameters used:  $f = 849$  MHz;  $\sigma = 0.989$  mho/m;  $\epsilon_r = 56.6$ ;  $\rho = 1000$  kg/m<sup>3</sup>

Ambient Temperature : 22.2 °C; Liquid Temperature : 21.1 °C

DASY4 Configuration:

- Probe: ET3DV6 - SN1788; ConvF(6.33, 6.33, 6.33); Calibrated: 9/19/2006
- Sensor-Surface: 4mm (Mechanical And Optical Surface Detection)
- Electronics: DAE3 Sn577; Calibrated: 11/21/2006
- Phantom: SAM-A; Type: QD 000 P40 C; Serial: TP-1303
- Measurement SW: DASY4, V4.7 Build 44; Postprocessing SW: SEMCAD, V1.8 Build 171

Ch251/Area Scan (51x101x1): Measurement grid: dx=15mm, dy=15mm

Maximum value of SAR (interpolated) = 0.634 mW/g

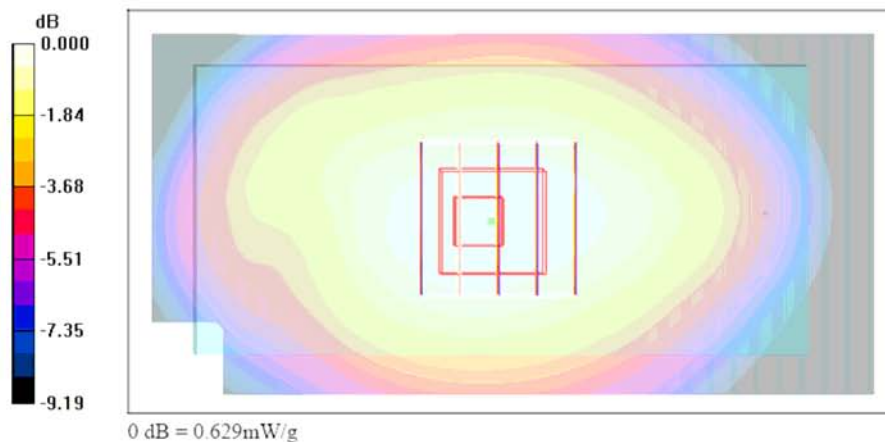
Ch251/Zoom Scan (5x5x7)/Cube 0: Measurement grid: dx=8mm, dy=8mm, dz=5mm

Reference Value = 15.4 V/m; Power Drift = -0.086 dB

Peak SAR (extrapolated) = 0.763 W/kg

SAR(1 g) = 0.597 mW/g; SAR(10 g) = 0.439 mW/g

Maximum value of SAR (measured) = 0.629 mW/g





## FCC SAR Test Report

Test Report No : FA6N2811-3-2-01

Test Laboratory: Sporton International Inc. SAR Testing Lab

Date/Time: 12/27/2006 6:16:59 AM

Body\_GSM850 Ch251\_Keypad Down with 1.5cm Gap\_20061227\_Scanner 1\_GPRS10\_Bluetooth

DUT: 6N2811

Communication System: GSM850; Frequency: 848.8 MHz; Duty Cycle: 1:4

Medium: MSL\_850 Medium parameters used:  $f = 849$  MHz;  $\sigma = 0.989$  mho/m;  $\epsilon_r = 56.6$ ;  $\rho = 1000$  kg/m<sup>3</sup>

Ambient Temperature : 21.9 °C; Liquid Temperature : 21.1 °C

DASY4 Configuration:

- Probe: ET3DV6 - SN1788; ConvF(6.33, 6.33, 6.33); Calibrated: 9/19/2006
- Sensor-Surface: 4mm (Mechanical And Optical Surface Detection)
- Electronics: DAE3 Sn577; Calibrated: 11/21/2006
- Phantom: SAM-A; Type: QD 000 P40 C; Serial: TP-1303
- Measurement SW: DASY4, V4.7 Build 44; Postprocessing SW: SEMCAD, V1.8 Build 171

Ch251/Area Scan (51x101x1): Measurement grid: dx=15mm, dy=15mm

Maximum value of SAR (interpolated) = 0.622 mW/g

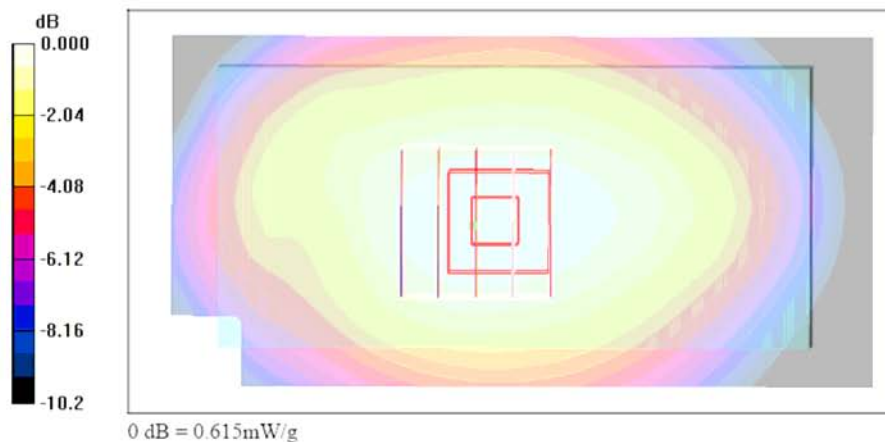
Ch251/Zoom Scan (5x5x7)/Cube 0: Measurement grid: dx=8mm, dy=8mm, dz=5mm

Reference Value = 15.1 V/m; Power Drift = -0.066 dB

Peak SAR (extrapolated) = 0.744 W/kg

SAR(1 g) = 0.582 mW/g; SAR(10 g) = 0.427 mW/g

Maximum value of SAR (measured) = 0.615 mW/g





## FCC SAR Test Report

Test Report No : FA6N2811-3-2-01

Test Laboratory: Sporton International Inc. SAR Testing Lab

Date/Time: 12/27/2006 3:49:56 AM

Body\_GSM850 Ch189\_Keypad Down with 1.5cm Gap\_20061227\_Scanner 1\_GPRS12

DUT: 6N2811

Communication System: GSM850; Frequency: 836.4 MHz; Duty Cycle: 1:2

Medium: MSL\_850 Medium parameters used :  $f = 836.4$  MHz;  $\sigma = 0.976$  mho/m;  $\epsilon_r = 56.6$ ;  $\rho = 1000$  kg/m<sup>3</sup>

Ambient Temperature : 22.4 °C; Liquid Temperature : 21.1 °C

DASY4 Configuration:

- Probe: ET3DV6 - SN1788; ConvF(6.33, 6.33, 6.33); Calibrated: 9/19/2006
- Sensor-Surface: 4mm (Mechanical And Optical Surface Detection)
- Electronics: DAE3 Sn577; Calibrated: 11/21/2006
- Phantom: SAM-A; Type: QD 000 P40 C; Serial: TP-1303
- Measurement SW: DASY4, V4.7 Build 44; Postprocessing SW: SEMCAD, V1.8 Build 171

Ch189/Area Scan (51x101x1): Measurement grid: dx=15mm, dy=15mm

Maximum value of SAR (interpolated) = 0.435 mW/g

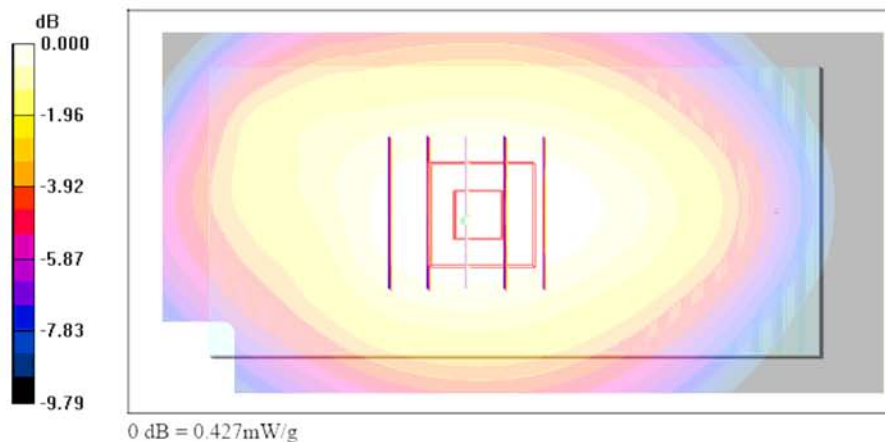
Ch189/Zoom Scan (5x5x7)/Cube 0: Measurement grid: dx=8mm, dy=8mm, dz=5mm

Reference Value = 11.5 V/m; Power Drift = -0.011 dB

Peak SAR (extrapolated) = 0.525 W/kg

SAR(1 g) = 0.406 mW/g; SAR(10 g) = 0.299 mW/g

Maximum value of SAR (measured) = 0.427 mW/g





## FCC SAR Test Report

Test Report No : FA6N2811-3-2-01

Test Laboratory: Sporton International Inc. SAR Testing Lab

Date/Time: 12/27/2006 4:18:18 AM

Body\_GSM850 Ch189\_Keypad Down with 1.5cm Gap\_20061227\_Scanner 1\_EGPRS8

DUT: 6N2811

Communication System: GSM850; Frequency: 836.4 MHz; Duty Cycle: 1:8.3

Medium: MSL\_850 Medium parameters used :  $f = 836.4$  MHz;  $\sigma = 0.976$  mho/m;  $\epsilon_r = 56.6$ ;  $\rho = 1000$  kg/m<sup>3</sup>

Ambient Temperature : 22.5 °C; Liquid Temperature : 21.1 °C

DASY4 Configuration:

- Probe: ET3DV6 - SN1788; ConvF(6.33, 6.33, 6.33); Calibrated: 9/19/2006
- Sensor-Surface: 4mm (Mechanical And Optical Surface Detection)
- Electronics: DAE3 Sn577; Calibrated: 11/21/2006
- Phantom: SAM-A; Type: QD 000 P40 C; Serial: TP-1303
- Measurement SW: DASY4, V4.7 Build 44; Postprocessing SW: SEMCAD, V1.8 Build 171

Ch189/Area Scan (51x101x1): Measurement grid: dx=15mm, dy=15mm

Maximum value of SAR (interpolated) = 0.124 mW/g

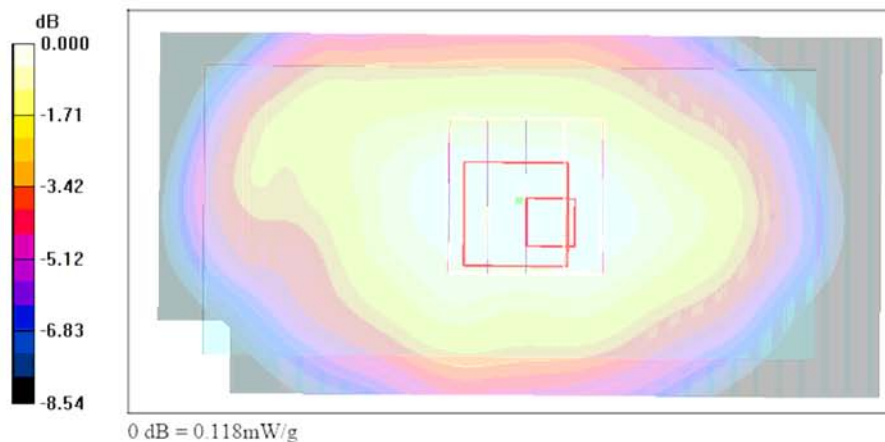
Ch189/Zoom Scan (5x5x7)/Cube 0: Measurement grid: dx=8mm, dy=8mm, dz=5mm

Reference Value = 7.29 V/m; Power Drift = -0.135 dB

Peak SAR (extrapolated) = 0.148 W/kg

SAR(1 g) = 0.108 mW/g; SAR(10 g) = 0.080 mW/g

Maximum value of SAR (measured) = 0.118 mW/g





## FCC SAR Test Report

Test Report No : FA6N2811-3-2-01

Test Laboratory: Sporton International Inc. SAR Testing Lab

Date/Time: 12/27/2006 4:34:12 AM

Body\_GSM850 Ch189\_Keypad Down with 1.5cm Gap\_20061227\_Scanner 1\_EGPRS10

DUT: 6N2811

Communication System: GSM850; Frequency: 836.4 MHz; Duty Cycle: 1:4

Medium: MSL\_850 Medium parameters used :  $f = 836.4$  MHz;  $\sigma = 0.976$  mho/m;  $\epsilon_r = 56.6$ ;  $\rho = 1000$  kg/m<sup>3</sup>

Ambient Temperature : 22.2 °C; Liquid Temperature : 21.1 °C

DASY4 Configuration:

- Probe: ET3DV6 - SN1788; ConvF(6.33, 6.33, 6.33); Calibrated: 9/19/2006
- Sensor-Surface: 4mm (Mechanical And Optical Surface Detection)
- Electronics: DAE3 Sn577; Calibrated: 11/21/2006
- Phantom: SAM-A; Type: QD 000 P40 C; Serial: TP-1303
- Measurement SW: DASY4, V4.7 Build 44; Postprocessing SW: SEMCAD, V1.8 Build 171

Ch189/Area Scan (51x101x1): Measurement grid: dx=15mm, dy=15mm

Maximum value of SAR (interpolated) = 0.146 mW/g

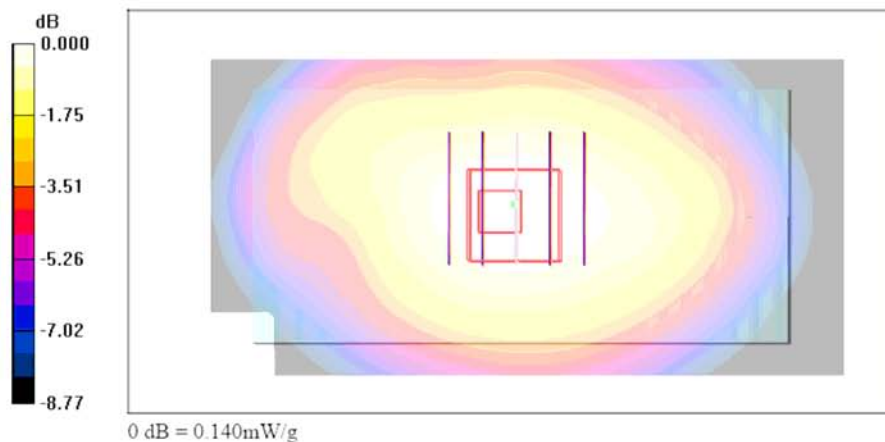
Ch189/Zoom Scan (5x5x7)/Cube 0: Measurement grid: dx=8mm, dy=8mm, dz=5mm

Reference Value = 7.97 V/m; Power Drift = -0.129 dB

Peak SAR (extrapolated) = 0.171 W/kg

SAR(1 g) = 0.132 mW/g; SAR(10 g) = 0.096 mW/g

Maximum value of SAR (measured) = 0.140 mW/g





## FCC SAR Test Report

Test Report No : FA6N2811-3-2-01

Test Laboratory: Sporton International Inc. SAR Testing Lab

Date/Time: 12/27/2006 5:06:34 AM

Body\_GSM850 Ch189\_Keypad Down with 1.5cm Gap\_20061227\_Scanner 1\_EGPRS12

DUT: 6N2811

Communication System: GSM850; Frequency: 836.4 MHz; Duty Cycle: 1:2

Medium: MSL\_850 Medium parameters used :  $f = 836.4 \text{ MHz}$ ;  $\sigma = 0.976 \text{ mho/m}$ ;  $\epsilon_r = 56.6$ ;  $\rho = 1000 \text{ kg/m}^3$

Ambient Temperature : 22.0 °C; Liquid Temperature : 21.1 °C

DASY4 Configuration:

- Probe: ET3DV6 - SN1788; ConvF(6.33, 6.33, 6.33); Calibrated: 9/19/2006
- Sensor-Surface: 4mm (Mechanical And Optical Surface Detection)
- Electronics: DAE3 Sn577; Calibrated: 11/21/2006
- Phantom: SAM-A; Type: QD 000 P40 C; Serial: TP-1303
- Measurement SW: DASY4, V4.7 Build 44; Postprocessing SW: SEMCAD, V1.8 Build 171

Ch189/Area Scan (51x101x1): Measurement grid: dx=15mm, dy=15mm

Maximum value of SAR (interpolated) = 0.425 mW/g

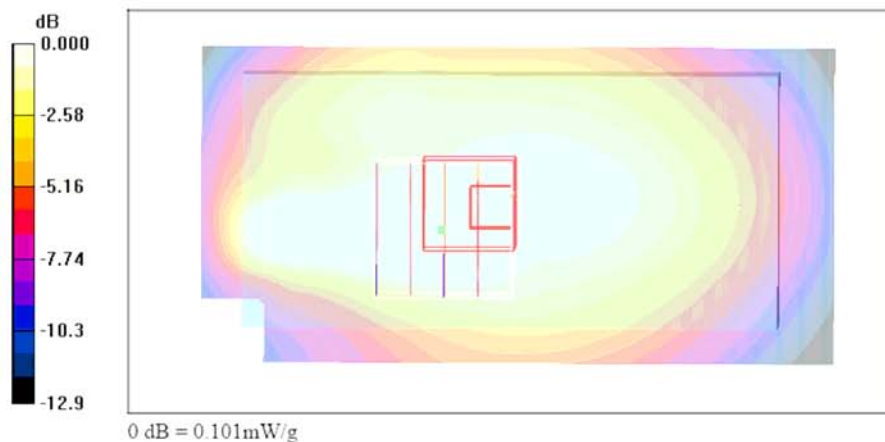
Ch189/Zoom Scan (5x5x7)/Cube 0: Measurement grid: dx=8mm, dy=8mm, dz=5mm

Reference Value = 6.66 V/m; Power Drift = -0.168 dB

Peak SAR (extrapolated) = 0.131 W/kg

SAR(1 g) = 0.095 mW/g; SAR(10 g) = 0.068 mW/g

Maximum value of SAR (measured) = 0.101 mW/g







## FCC SAR Test Report

Test Report No : FA6N2811-3-2-01

Test Laboratory: Sporton International Inc. SAR Testing Lab

Date/Time: 1/3/2007 10:01:14 PM

Body\_GSM850 Ch251\_Keypad Down with 1.5cm Gap\_20070103\_Scanner 2\_GPRS10

DUT: 6N2811

Communication System: GSM850; Frequency: 848.8 MHz; Duty Cycle: 1:4

Medium: MSL\_850 Medium parameters used:  $f = 849$  MHz;  $\sigma = 0.987$  mho/m;  $\epsilon_r = 56.6$ ;  $\rho = 1000$  kg/m<sup>3</sup>

Ambient Temperature : 20.9 °C; Liquid Temperature : 20.4 °C

DASY4 Configuration:

- Probe: ET3DV6 - SN1788; ConvF(6.33, 6.33, 6.33); Calibrated: 9/19/2006
- Sensor-Surface: 4mm (Mechanical And Optical Surface Detection)
- Electronics: DAE3 Sn577; Calibrated: 11/21/2006
- Phantom: SAM-A; Type: QD 000 P40 C; Serial: TP-1303
- Measurement SW: DASY4, V4.7 Build 44; Postprocessing SW: SEMCAD, V1.8 Build 171

Ch251/Area Scan (51x101x1): Measurement grid: dx=15mm, dy=15mm

Maximum value of SAR (interpolated) = 0.921 mW/g

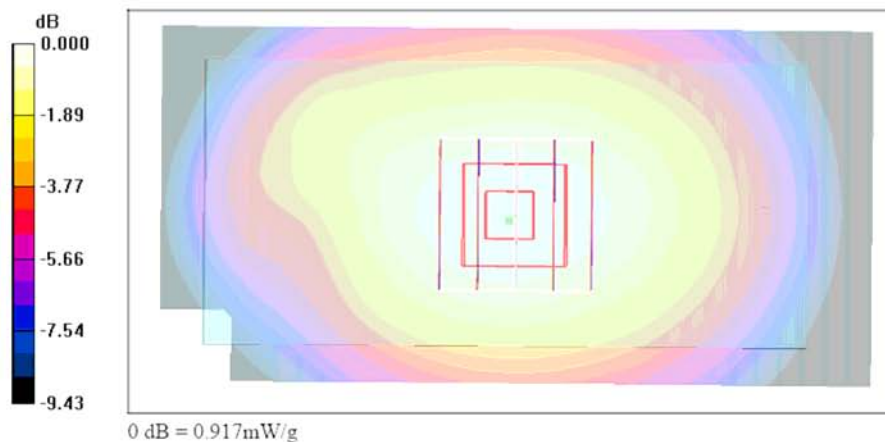
Ch251/Zoom Scan (5x5x7)/Cube 0: Measurement grid: dx=8mm, dy=8mm, dz=5mm

Reference Value = 18.2 V/m; Power Drift = -0.151 dB

Peak SAR (extrapolated) = 1.12 W/kg

SAR(1 g) = 0.863 mW/g; SAR(10 g) = 0.632 mW/g

Maximum value of SAR (measured) = 0.917 mW/g





## FCC SAR Test Report

Test Report No : FA6N2811-3-2-01

Test Laboratory: Sporton International Inc. SAR Testing Lab

Date/Time: 12/27/2006 6:56:04 AM

Body\_PCS Ch661\_Keypad Up with 1.5cm Gap\_20061227\_Scanner 1\_GPRS8

DUT: 6N2811

Communication System: PCS; Frequency: 1880 MHz; Duty Cycle: 1:8.3

Medium: MSL\_1900 Medium parameters used:  $f = 1880$  MHz;  $\sigma = 1.5$  mho/m;  $\epsilon_r = 52.5$ ;  $\rho = 1000$  kg/m<sup>3</sup>

Ambient Temperature : 22.1 °C; Liquid Temperature : 20.9 °C

DASY4 Configuration:

- Probe: ET3DV6 - SN1788; ConvF(4.67, 4.67, 4.67); Calibrated: 9/19/2006
- Sensor-Surface: 4mm (Mechanical And Optical Surface Detection)
- Electronics: DAE3 Sn577; Calibrated: 11/21/2006
- Phantom: SAM-B; Type: QD 000 P40 C; Serial: TP-1383
- Measurement SW: DASY4, V4.7 Build 44; Postprocessing SW: SEMCAD, V1.8 Build 171

Ch661/Area Scan (51x101x1): Measurement grid: dx=15mm, dy=15mm

Maximum value of SAR (interpolated) = 0.076 mW/g

Ch661/Zoom Scan (5x5x7)/Cube 0: Measurement grid: dx=8mm, dy=8mm, dz=5mm

Reference Value = 6.32 V/m; Power Drift = -0.072 dB

Peak SAR (extrapolated) = 0.096 W/kg

SAR(1 g) = 0.069 mW/g; SAR(10 g) = 0.047 mW/g

Maximum value of SAR (measured) = 0.074 mW/g

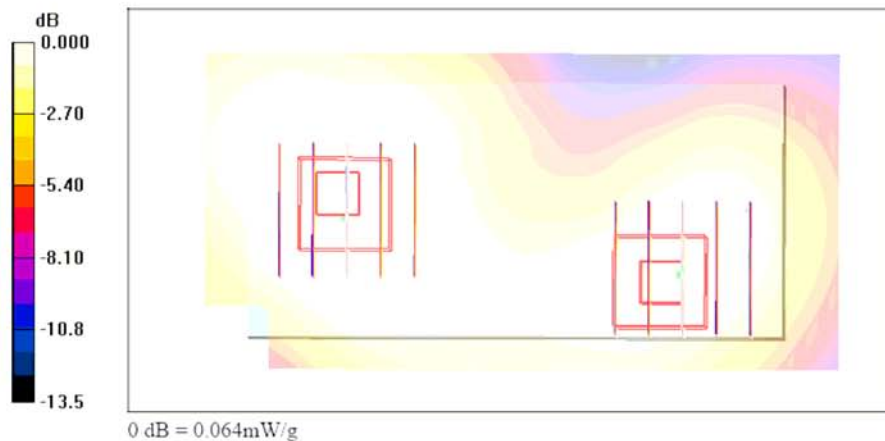
Ch661/Zoom Scan (5x5x7)/Cube 1: Measurement grid: dx=8mm, dy=8mm, dz=5mm

Reference Value = 6.32 V/m; Power Drift = -0.072 dB

Peak SAR (extrapolated) = 0.081 W/kg

SAR(1 g) = 0.060 mW/g; SAR(10 g) = 0.040 mW/g

Maximum value of SAR (measured) = 0.064 mW/g







## FCC SAR Test Report

Test Report No : FA6N2811-3-2-01

Test Laboratory: Sporton International Inc. SAR Testing Lab

Date/Time: 12/27/2006 7:26:10 AM

Body\_PCS Ch661\_Keypad Down with 1.5cm Gap\_20061227\_Scanner 1\_GPRS8

DUT: 6N2811

Communication System: PCS; Frequency: 1880 MHz; Duty Cycle: 1:8.3

Medium: MSL\_1900 Medium parameters used:  $f = 1880$  MHz;  $\sigma = 1.5$  mho/m;  $\epsilon_r = 52.5$ ;  $\rho = 1000$  kg/m<sup>3</sup>

Ambient Temperature : 22.0 °C; Liquid Temperature : 20.9 °C

DASY4 Configuration:

- Probe: ET3DV6 - SN1788; ConvF(4.67, 4.67, 4.67); Calibrated: 9/19/2006
- Sensor-Surface: 4mm (Mechanical And Optical Surface Detection)
- Electronics: DAE3 Sn577; Calibrated: 11/21/2006
- Phantom: SAM-B; Type: QD 000 P40 C; Serial: TP-1383
- Measurement SW: DASY4, V4.7 Build 44; Postprocessing SW: SEMCAD, V1.8 Build 171

Ch661/Area Scan (51x101x1): Measurement grid: dx=15mm, dy=15mm

Maximum value of SAR (interpolated) = 0.097 mW/g

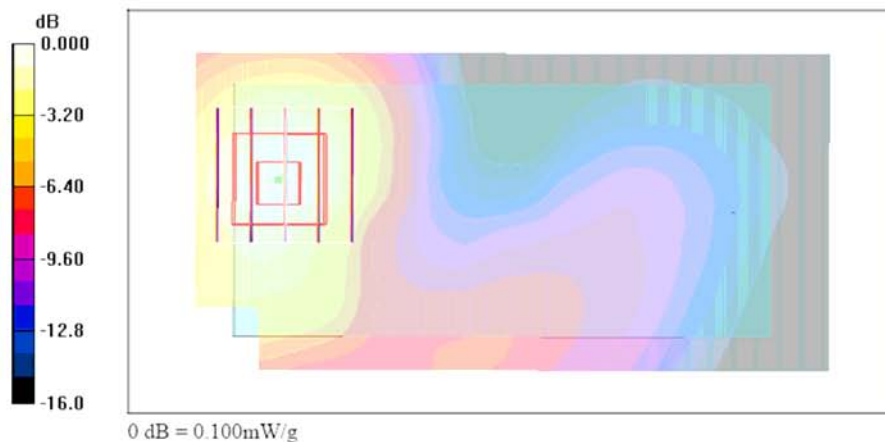
Ch661/Zoom Scan (5x5x7)/Cube 0: Measurement grid: dx=8mm, dy=8mm, dz=5mm

Reference Value = 2.23 V/m; Power Drift = -0.186 dB

Peak SAR (extrapolated) = 0.138 W/kg

SAR(1 g) = 0.090 mW/g; SAR(10 g) = 0.054 mW/g

Maximum value of SAR (measured) = 0.100 mW/g





## FCC SAR Test Report

Test Report No : FA6N2811-3-2-01

Test Laboratory: Sporton International Inc. SAR Testing Lab

Date/Time: 12/27/2006 9:38:00 AM

Body\_PCS Ch512\_Keypad Down with 1.5cm Gap\_20061227\_Scanner 1\_GPRS10

DUT: 6N2811

Communication System: PCS; Frequency: 1850.2 MHz; Duty Cycle: 1:4

Medium: MSL\_1900 Medium parameters used :  $f = 1850.2$  MHz;  $\sigma = 1.47$  mho/m;  $\epsilon_r = 52.6$ ;  $\rho = 1000$  kg/m<sup>3</sup>

Ambient Temperature : 22.3 °C; Liquid Temperature : 20.9 °C

DASY4 Configuration:

- Probe: ET3DV6 - SN1788; ConvF(4.67, 4.67, 4.67); Calibrated: 9/19/2006
- Sensor-Surface: 4mm (Mechanical And Optical Surface Detection)
- Electronics: DAE3 Sn577; Calibrated: 11/21/2006
- Phantom: SAM-B; Type: QD 000 P40 C; Serial: TP-1383
- Measurement SW: DASY4, V4.7 Build 44; Postprocessing SW: SEMCAD, V1.8 Build 171

Ch512/Area Scan (51x101x1): Measurement grid: dx=15mm, dy=15mm

Maximum value of SAR (interpolated) = 0.173 mW/g

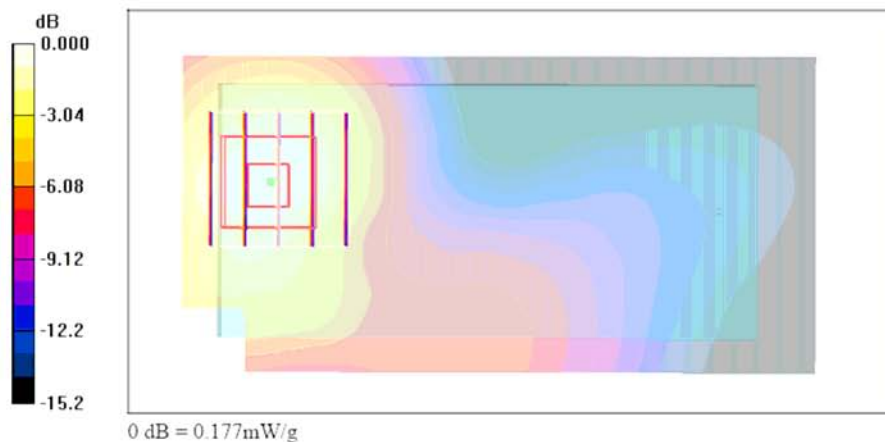
Ch512/Zoom Scan (5x5x7)/Cube 0: Measurement grid: dx=8mm, dy=8mm, dz=5mm

Reference Value = 2.84 V/m; Power Drift = -0.107 dB

Peak SAR (extrapolated) = 0.245 W/kg

SAR(1 g) = 0.162 mW/g; SAR(10 g) = 0.098 mW/g

Maximum value of SAR (measured) = 0.177 mW/g





## FCC SAR Test Report

Test Report No : FA6N2811-3-2-01

Test Laboratory: Sporton International Inc. SAR Testing Lab

Date/Time: 12/27/2006 10:20:34 AM

Body\_PCS Ch512\_Keypad Down with 1.5cm Gap\_20061227\_Scanner 1\_GPRS10\_Bluetooth

DUT: 6N2811

Communication System: PCS; Frequency: 1850.2 MHz; Duty Cycle: 1:4

Medium: MSL\_1900 Medium parameters used :  $f = 1850.2$  MHz;  $\sigma = 1.47$  mho/m;  $\epsilon_r = 52.6$ ;  $\rho = 1000$  kg/m<sup>3</sup>

Ambient Temperature : 22.1 °C; Liquid Temperature : 20.9 °C

DASY4 Configuration:

- Probe: ET3DV6 - SN1788; ConvF(4.67, 4.67, 4.67); Calibrated: 9/19/2006
- Sensor-Surface: 4mm (Mechanical And Optical Surface Detection)
- Electronics: DAE3 Sn577; Calibrated: 11/21/2006
- Phantom: SAM-B; Type: QD 000 P40 C; Serial: TP-1383
- Measurement SW: DASY4, V4.7 Build 44; Postprocessing SW: SEMCAD, V1.8 Build 171

Ch512/Area Scan (51x101x1): Measurement grid: dx=15mm, dy=15mm

Maximum value of SAR (interpolated) = 0.173 mW/g

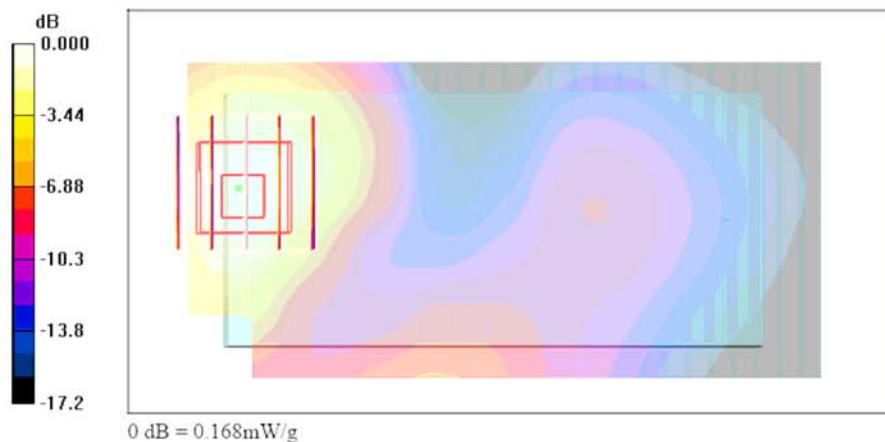
Ch512/Zoom Scan (5x5x7)/Cube 0: Measurement grid: dx=8mm, dy=8mm, dz=5mm

Reference Value = 2.65 V/m; Power Drift = -0.126 dB

Peak SAR (extrapolated) = 0.239 W/kg

SAR(1 g) = 0.158 mW/g; SAR(10 g) = 0.094 mW/g

Maximum value of SAR (measured) = 0.168 mW/g





## FCC SAR Test Report

Test Report No : FA6N2811-3-2-01

Test Laboratory: Sporton International Inc. SAR Testing Lab

Date/Time: 12/27/2006 7:57:45 AM

Body\_PCS Ch661\_Keypad Down with 1.5cm Gap\_20061227\_Scanner 1\_GPRS12

DUT: 6N2811

Communication System: PCS; Frequency: 1880 MHz; Duty Cycle: 1:2

Medium: MSL\_1900 Medium parameters used:  $f = 1880$  MHz;  $\sigma = 1.5$  mho/m;  $\epsilon_r = 52.5$ ;  $\rho = 1000$  kg/m<sup>3</sup>

Ambient Temperature : 21.8 °C; Liquid Temperature : 20.9 °C

DASY4 Configuration:

- Probe: ET3DV6 - SN1788; ConvF(4.67, 4.67, 4.67); Calibrated: 9/19/2006
- Sensor-Surface: 4mm (Mechanical And Optical Surface Detection)
- Electronics: DAE3 Sn577; Calibrated: 11/21/2006
- Phantom: SAM-B; Type: QD 000 P40 C; Serial: TP-1383
- Measurement SW: DASY4, V4.7 Build 44; Postprocessing SW: SEMCAD, V1.8 Build 171

Ch661/Area Scan (51x101x1): Measurement grid: dx=15mm, dy=15mm

Maximum value of SAR (interpolated) = 0.115 mW/g

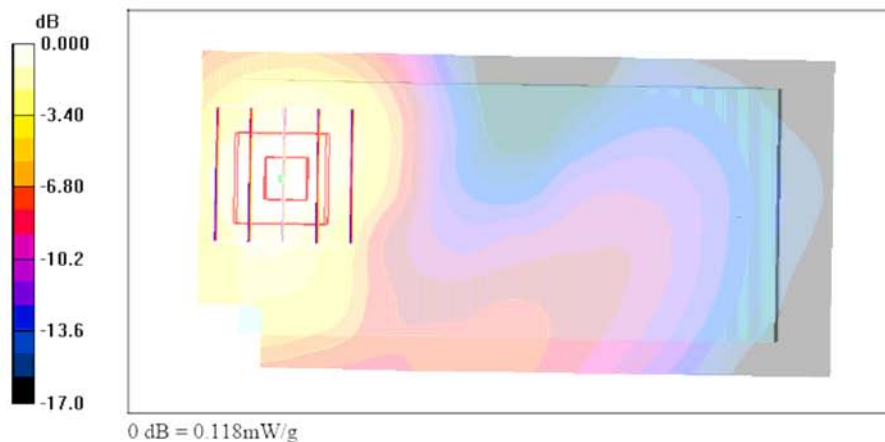
Ch661/Zoom Scan (5x5x7)/Cube 0: Measurement grid: dx=8mm, dy=8mm, dz=5mm

Reference Value = 2.36 V/m; Power Drift = -0.151 dB

Peak SAR (extrapolated) = 0.164 W/kg

SAR(1 g) = 0.106 mW/g; SAR(10 g) = 0.063 mW/g

Maximum value of SAR (measured) = 0.118 mW/g





## FCC SAR Test Report

Test Report No : FA6N2811-3-2-01

Test Laboratory: Sporton International Inc. SAR Testing Lab

Date/Time: 12/27/2006 8:21:50 AM

Body\_PCS Ch661\_Keypad Down with 1.5cm Gap\_20061227\_Scanner 1\_EGPRS8

DUT: 6N2811

Communication System: PCS; Frequency: 1880 MHz; Duty Cycle: 1:8.3

Medium: MSL\_1900 Medium parameters used:  $f = 1880$  MHz;  $\sigma = 1.5$  mho/m;  $\epsilon_r = 52.5$ ;  $\rho = 1000$  kg/m<sup>3</sup>

Ambient Temperature : 22.3 °C; Liquid Temperature : 20.9 °C

DASY4 Configuration:

- Probe: ET3DV6 - SN1788; ConvF(4.67, 4.67, 4.67); Calibrated: 9/19/2006
- Sensor-Surface: 4mm (Mechanical And Optical Surface Detection)
- Electronics: DAE3 Sn577; Calibrated: 11/21/2006
- Phantom: SAM-B; Type: QD 000 P40 C; Serial: TP-1383
- Measurement SW: DASY4, V4.7 Build 44; Postprocessing SW: SEMCAD, V1.8 Build 171

Ch661/Area Scan (51x101x1): Measurement grid: dx=15mm, dy=15mm

Maximum value of SAR (interpolated) = 0.049 mW/g

Ch661/Zoom Scan (5x5x7)/Cube 0: Measurement grid: dx=8mm, dy=8mm, dz=5mm

Reference Value = 1.99 V/m; Power Drift = -0.183 dB

Peak SAR (extrapolated) = 0.068 W/kg

SAR(1 g) = 0.044 mW/g; SAR(10 g) = 0.026 mW/g

Maximum value of SAR (measured) = 0.048 mW/g

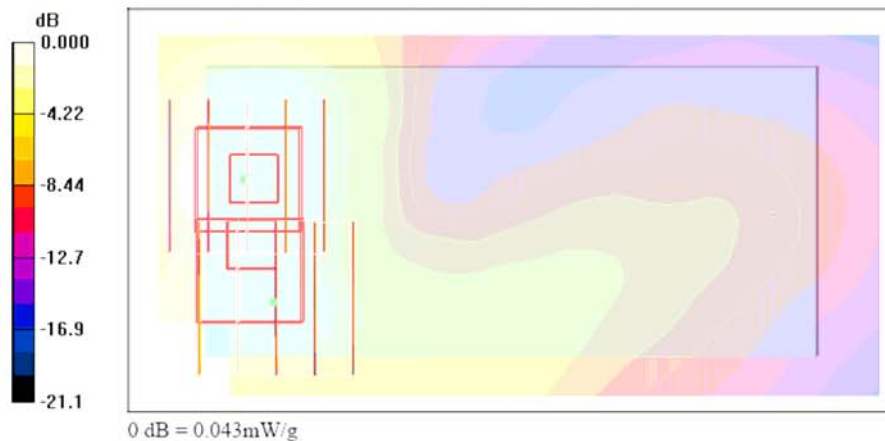
Ch661/Zoom Scan (5x5x7)/Cube 1: Measurement grid: dx=8mm, dy=8mm, dz=5mm

Reference Value = 1.99 V/m; Power Drift = -0.183 dB

Peak SAR (extrapolated) = 0.060 W/kg

SAR(1 g) = 0.032 mW/g; SAR(10 g) = 0.020 mW/g

Maximum value of SAR (measured) = 0.043 mW/g





## FCC SAR Test Report

Test Report No : FA6N2811-3-2-01

Test Laboratory: Sporton International Inc. SAR Testing Lab

Date/Time: 12/27/2006 8:43:17 AM

Body\_PCS Ch661\_Keypad Down with 1.5cm Gap\_20061227\_Scanner 1\_EGPRS10

DUT: 6N2811

Communication System: PCS; Frequency: 1880 MHz; Duty Cycle: 1:4

Medium: MSL\_1900 Medium parameters used:  $f = 1880$  MHz;  $\sigma = 1.5$  mho/m;  $\epsilon_r = 52.5$ ;  $\rho = 1000$  kg/m<sup>3</sup>

Ambient Temperature : 22.3 °C; Liquid Temperature : 20.9 °C

DASY4 Configuration:

- Probe: ET3DV6 - SN1788; ConvF(4.67, 4.67, 4.67); Calibrated: 9/19/2006
- Sensor-Surface: 4mm (Mechanical And Optical Surface Detection)
- Electronics: DAE3 Sn577; Calibrated: 11/21/2006
- Phantom: SAM-B; Type: QD 000 P40 C; Serial: TP-1383
- Measurement SW: DASY4, V4.7 Build 44; Postprocessing SW: SEMCAD, V1.8 Build 171

Ch661/Area Scan (51x101x1): Measurement grid: dx=15mm, dy=15mm

Maximum value of SAR (interpolated) = 0.059 mW/g

Ch661/Zoom Scan (5x5x7)/Cube 0: Measurement grid: dx=8mm, dy=8mm, dz=5mm

Reference Value = 2.28 V/m; Power Drift = -0.168 dB

Peak SAR (extrapolated) = 0.165 W/kg

SAR(1 g) = 0.096 mW/g; SAR(10 g) = 0.045 mW/g

Maximum value of SAR (measured) = 0.113 mW/g

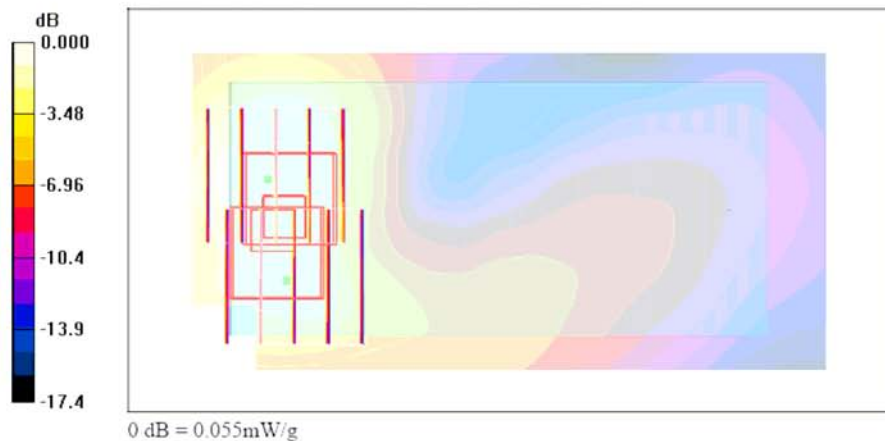
Ch661/Zoom Scan (5x5x7)/Cube 1: Measurement grid: dx=8mm, dy=8mm, dz=5mm

Reference Value = 2.28 V/m; Power Drift = -0.168 dB

Peak SAR (extrapolated) = 0.081 W/kg

SAR(1 g) = 0.042 mW/g; SAR(10 g) = 0.025 mW/g

Maximum value of SAR (measured) = 0.055 mW/g







## FCC SAR Test Report

Test Report No : FA6N2811-3-2-01

Test Laboratory: Sporton International Inc. SAR Testing Lab

Date/Time: 12/27/2006 9:22:01 AM

Body\_PCS Ch661\_Keypad Down with 1.5cm Gap\_20061227\_Scanner 1\_EGPRS12

DUT: 6N2811

Communication System: PCS; Frequency: 1880 MHz; Duty Cycle: 1:2

Medium: MSL\_1900 Medium parameters used:  $f = 1880$  MHz;  $\sigma = 1.5$  mho/m;  $\epsilon_r = 52.5$ ;  $\rho = 1000$  kg/m<sup>3</sup>

Ambient Temperature : 22.3 °C; Liquid Temperature : 20.9 °C

DASY4 Configuration:

- Probe: ET3DV6 - SN1788; ConvF(4.67, 4.67, 4.67); Calibrated: 9/19/2006
- Sensor-Surface: 4mm (Mechanical And Optical Surface Detection)
- Electronics: DAE3 Sn577; Calibrated: 11/21/2006
- Phantom: SAM-B; Type: QD 000 P40 C; Serial: TP-1383
- Measurement SW: DASY4, V4.7 Build 44; Postprocessing SW: SEMCAD, V1.8 Build 171

Ch661/Area Scan (51x101x1): Measurement grid: dx=15mm, dy=15mm

Maximum value of SAR (interpolated) = 0.049 mW/g

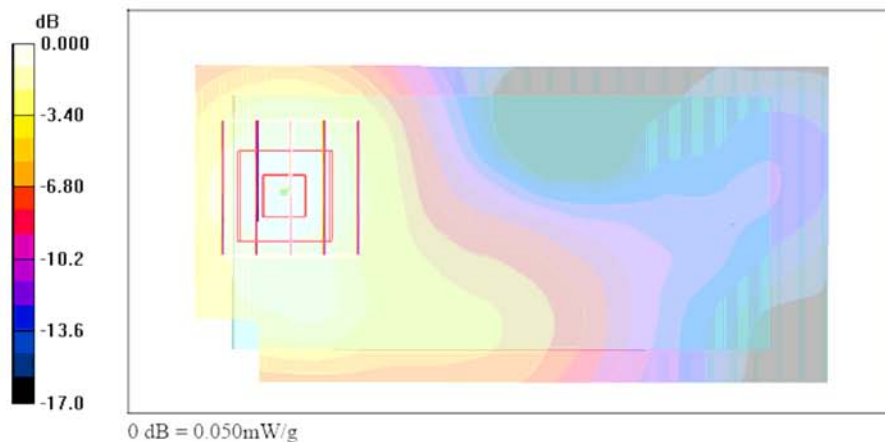
Ch661/Zoom Scan (5x5x7)/Cube 0: Measurement grid: dx=8mm, dy=8mm, dz=5mm

Reference Value = 1.55 V/m; Power Drift = 0.110 dB

Peak SAR (extrapolated) = 0.069 W/kg

SAR(1 g) = 0.046 mW/g; SAR(10 g) = 0.028 mW/g

Maximum value of SAR (measured) = 0.050 mW/g





## FCC SAR Test Report

Test Report No : FA6N2811-3-2-01

Test Laboratory: Sporton International Inc. SAR Testing Lab

Date/Time: 1/3/2007 11:32:26 PM

Body\_PCS Ch512\_Keypad Down with 1.5cm Gap\_20070103\_Scanner 2\_GPRS10

DUT: 6N2811

Communication System: PCS; Frequency: 1850.2 MHz; Duty Cycle: 1:4

Medium: MSL\_1900 Medium parameters used :  $f = 1850.2$  MHz;  $\sigma = 1.48$  mho/m;  $\epsilon_r = 53.2$ ;  $\rho = 1000$  kg/m<sup>3</sup>

Ambient Temperature : 20.7 °C; Liquid Temperature : 20.5 °C

DASY4 Configuration:

- Probe: ET3DV6 - SN1788; ConvF(4.67, 4.67, 4.67); Calibrated: 9/19/2006
- Sensor-Surface: 4mm (Mechanical And Optical Surface Detection)
- Electronics: DAE3 Sn577; Calibrated: 11/21/2006
- Phantom: SAM-B; Type: QD 000 P40 C; Serial: TP-1383
- Measurement SW: DASY4, V4.7 Build 44; Postprocessing SW: SEMCAD, V1.8 Build 171

Ch512/Area Scan (51x101x1): Measurement grid: dx=15mm, dy=15mm

Maximum value of SAR (interpolated) = 0.160 mW/g

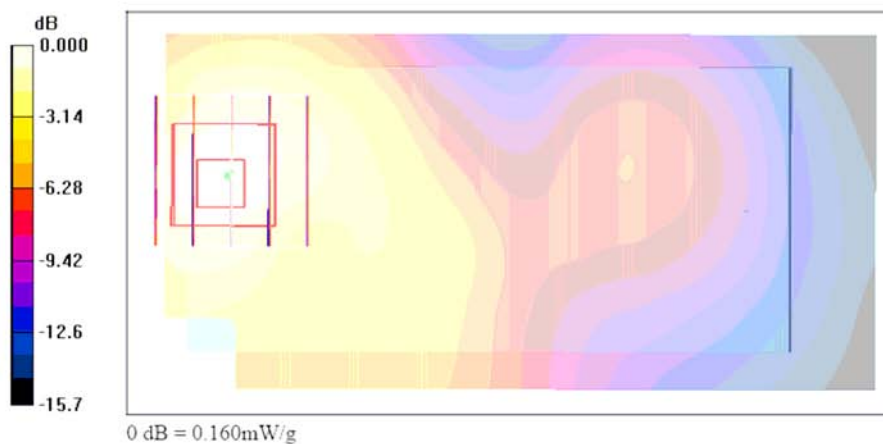
Ch512/Zoom Scan (5x5x7)/Cube 0: Measurement grid: dx=8mm, dy=8mm, dz=5mm

Reference Value = 3.89 V/m; Power Drift = 0.001 dB

Peak SAR (extrapolated) = 0.219 W/kg

SAR(1 g) = 0.147 mW/g; SAR(10 g) = 0.091 mW/g

Maximum value of SAR (measured) = 0.160 mW/g







## FCC SAR Test Report

Test Report No : FA6N2811-3-2-01

Test Laboratory: Sporton International Inc. SAR Testing Lab

Date/Time: 12/25/2006 11:03:40 PM

Right Cheek\_GSM850 Ch251\_20061225\_Scanner 1\_2D

DUT: 6N2811

Communication System: GSM850; Frequency: 848.8 MHz; Duty Cycle: 1:8.3

Medium: HSL\_850 Medium parameters used:  $f = 849$  MHz;  $\sigma = 0.909$  mho/m;  $\epsilon_r = 42.7$ ;  $\rho = 1000$  kg/m<sup>3</sup>

Ambient Temperature : 22.3 °C; Liquid Temperature : 21.1 °C

DASY4 Configuration:

- Probe: ET3DV6 - SN1788; ConvF(6.6, 6.6, 6.6); Calibrated: 9/19/2006
- Sensor-Surface: 4mm (Mechanical And Optical Surface Detection)
- Electronics: DAE3 Sn577; Calibrated: 11/21/2006
- Phantom: SAM-B; Type: QD 000 P40 C; Serial: TP-1383
- Measurement SW: DASY4, V4.7 Build 44; Postprocessing SW: SEMCAD, V1.8 Build 171

Ch251/Area Scan (51x101x1): Measurement grid: dx=15mm, dy=15mm

Maximum value of SAR (interpolated) = 0.379 mW/g

Ch251/Zoom Scan (5x5x7)/Cube 0: Measurement grid: dx=8mm, dy=8mm, dz=5mm

Reference Value = 9.83 V/m; Power Drift = -0.161 dB

Peak SAR (extrapolated) = 0.491 W/kg

SAR(1 g) = 0.350 mW/g; SAR(10 g) = 0.272 mW/g

Maximum value of SAR (measured) = 0.364 mW/g

### 1g/10g Averaged SAR

SAR; Zoom Scan: Value Along Z, X=2, Y=1





## FCC SAR Test Report

Test Report No : FA6N2811-3-2-01

Test Laboratory: Sporton International Inc. SAR Testing Lab

Date/Time: 12/26/2006 10:03:19 PM

Left Cheek\_PCS Ch512\_20061226\_Scanner 1\_2D

DUT: 6N2811

Communication System: PCS; Frequency: 1850.2 MHz; Duty Cycle: 1:8.3

Medium: HSL\_1900 Medium parameters used :  $f = 1850.2$  MHz;  $\sigma = 1.43$  mho/m;  $\epsilon_r = 41.6$ ;  $\rho = 1000$  kg/m<sup>3</sup>

Ambient Temperature : 22.6 °C; Liquid Temperature : 21.0 °C

DASY4 Configuration:

- Probe: ET3DV6 - SN1788; ConvF(5.3, 5.3, 5.3); Calibrated: 9/19/2006
- Sensor-Surface: 4mm (Mechanical And Optical Surface Detection)
- Electronics: DAE3 Sn577; Calibrated: 11/21/2006
- Phantom: SAM-B; Type: QD 000 P40 C; Serial: TP-1383
- Measurement SW: DASY4, V4.7 Build 44; Postprocessing SW: SEMCAD, V1.8 Build 171

Ch512/Area Scan (51x101x1): Measurement grid: dx=15mm, dy=15mm

Maximum value of SAR (interpolated) = 0.398 mW/g

Ch512/Zoom Scan (5x5x7)/Cube 0: Measurement grid: dx=8mm, dy=8mm, dz=5mm

Reference Value = 7.33 V/m; Power Drift = -0.017 dB

Peak SAR (extrapolated) = 0.505 W/kg

SAR(1 g) = 0.348 mW/g; SAR(10 g) = 0.220 mW/g

Maximum value of SAR (measured) = 0.364 mW/g

### 1g/10g Averaged SAR

SAR; Zoom Scan: Value Along Z, X=2, Y=2





## FCC SAR Test Report

Test Report No : FA6N2811-3-2-01

Test Laboratory: Sporton International Inc. SAR Testing Lab

Date/Time: 12/27/2006 6:02:18 AM

Body\_GSM850 Ch251\_Keypad Down with 1.5cm Gap\_20061227\_Scanner 1\_GPRS10\_2D

DUT: 6N2811

Communication System: GSM850; Frequency: 848.8 MHz; Duty Cycle: 1:4

Medium: MSL\_850 Medium parameters used:  $f = 849$  MHz;  $\sigma = 0.989$  mho/m;  $\epsilon_r = 56.6$ ;  $\rho = 1000$  kg/m<sup>3</sup>

Ambient Temperature : 22.2 °C; Liquid Temperature : 21.1 °C

DASY4 Configuration:

- Probe: ET3DV6 - SN1788; ConvF(6.33, 6.33, 6.33); Calibrated: 9/19/2006
- Sensor-Surface: 4mm (Mechanical And Optical Surface Detection)
- Electronics: DAE3 Sn577; Calibrated: 11/21/2006
- Phantom: SAM-A; Type: QD 000 P40 C; Serial: TP-1303
- Measurement SW: DASY4, V4.7 Build 44; Postprocessing SW: SEMCAD, V1.8 Build 171

Ch251/Area Scan (51x101x1): Measurement grid: dx=15mm, dy=15mm

Maximum value of SAR (interpolated) = 0.634 mW/g

Ch251/Zoom Scan (5x5x7)/Cube 0: Measurement grid: dx=8mm, dy=8mm, dz=5mm

Reference Value = 15.4 V/m; Power Drift = -0.086 dB

Peak SAR (extrapolated) = 0.763 W/kg

SAR(1 g) = 0.597 mW/g; SAR(10 g) = 0.439 mW/g

Maximum value of SAR (measured) = 0.629 mW/g

### 1g/10g Averaged SAR

SAR; Zoom Scan: Value Along Z, X=2, Y=1





## FCC SAR Test Report

Test Report No : FA6N2811-3-2-01

Test Laboratory: Sporton International Inc. SAR Testing Lab

Date/Time: 12/27/2006 9:38:00 AM

Body\_PCS Ch512\_Keypad Down with 1.5cm Gap\_20061227\_Scanner 1\_GPRS10\_2D

DUT: 6N2811

Communication System: PCS; Frequency: 1850.2 MHz; Duty Cycle: 1:4

Medium: MSL\_1900 Medium parameters used :  $f = 1850.2$  MHz;  $\sigma = 1.47$  mho/m;  $\epsilon_r = 52.6$ ;  $\rho = 1000$  kg/m<sup>3</sup>

Ambient Temperature : 22.3 °C; Liquid Temperature : 20.9 °C

DASY4 Configuration:

- Probe: ET3DV6 - SN1788; ConvF(4.67, 4.67, 4.67); Calibrated: 9/19/2006
- Sensor-Surface: 4mm (Mechanical And Optical Surface Detection)
- Electronics: DAE3 Sn577; Calibrated: 11/21/2006
- Phantom: SAM-B; Type: QD 000 P40 C; Serial: TP-1383
- Measurement SW: DASY4, V4.7 Build 44; Postprocessing SW: SEMCAD, V1.8 Build 171

Ch512/Area Scan (51x101x1): Measurement grid: dx=15mm, dy=15mm

Maximum value of SAR (interpolated) = 0.173 mW/g

Ch512/Zoom Scan (5x5x7)/Cube 0: Measurement grid: dx=8mm, dy=8mm, dz=5mm

Reference Value = 2.84 V/m; Power Drift = -0.107 dB

Peak SAR (extrapolated) = 0.245 W/kg

SAR(1 g) = 0.162 mW/g; SAR(10 g) = 0.098 mW/g

Maximum value of SAR (measured) = 0.177 mW/g

