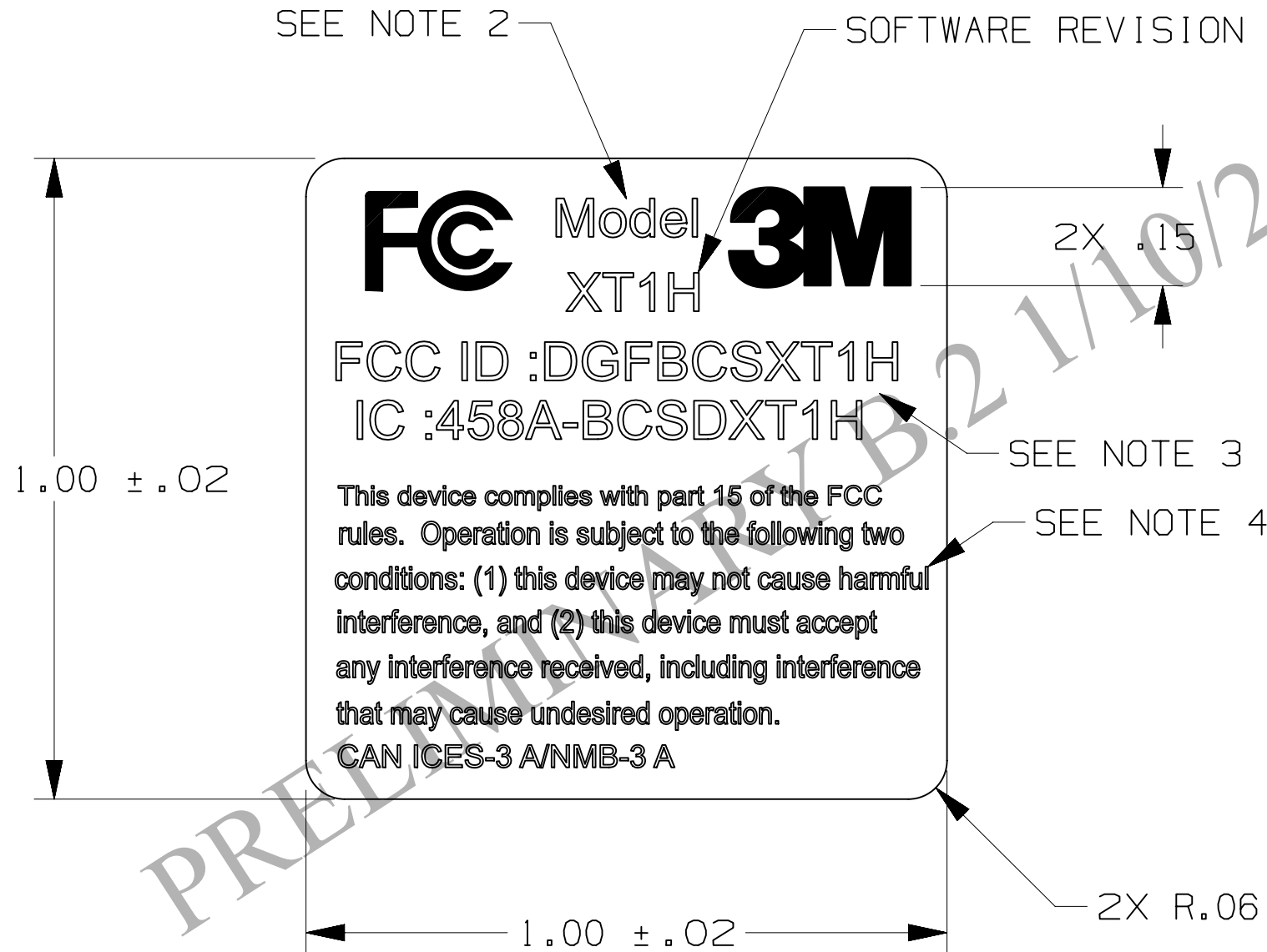


NOTES:

1. MATERIAL: Z-ULTIMATE 4000T WHITE POLYESTER LABEL STOCK, OR EQUIVALENT
5095 RIBBON, BLACK, OR EQUIVALENT
ZEBRA TECHNOLOGIES - WWW.ZEBRA.COM
2. CHARACTERS TO BE ARIAL OR VENUS, 6 POINT CAPS AND LOWER CASE
3. CHARACTOER TO BE ARIAL OR VENUS, 6 POINT CAPS
4. CHARACTERS TO BE ARIAL OR VENUS, 3 POINT CAPS AND LOWER CASE



78-6911-5082-1 78-8117-4323-2		REV	ECO	ISSUE DATE AND DESCRIPTION	DRFT	CHKD
DESIGN REFERENCE NEXT ASSEMBLY		B	XXXXXXX	JAN 10, 2013 CHG MODEL NO, FCC ID & IC TEXT	RCB	SJE
		A	0040231	APR 19, 2012 INITIAL RELEASE	RCB	SJE
DISTRIBUTION CODES		DRFT R. BOHM/APG		DATE OCT 25, 2011	MFG P. GERGEN	DATE OCT 25, 2011
		CHKD S. ELLIOTT		DATE OCT 25, 2011	APPVL S. AWISZUS	DATE OCT 25, 2011
DIVISION BLDG AND COMM SVCS		DIVISION CODE ND		© 3M COPYRIGHT 2012 This document and the information it contains are 3M property and may not be reproduced or further distributed without 3M permission, or used or disclosed other than for 3M authorized purposes. All rights reserved.		
DO NOT SCALE DRAWING	SCALE 4 1	TOLERANCES EXCEPT AS NOTED		3M 3M Center St. Paul, MN 55144		
THIRD ANGLE PROJECTION		INCHES .0 ± .00 ± .000 ± .0000 ±		TITLE LABEL, HEADSET XT-1B		
INTERPRET PER ASME Y14.5 - 1994		MILLIMETERS 0 ± .0 ± .00 ± .000 ±		CAGE NUMBER B		
MAX SURFACE ROUGHNESS 125 <input checked="" type="checkbox"/> ALL SURFACES <input checked="" type="checkbox"/> MARKED ONLY		ANGLES ±1°		DRAWING NO. 78-8117-4445-3		REV. B
		MODEL		DET. LISTS <input type="checkbox"/> YES <input checked="" type="checkbox"/> NO		SHT 1 OF 1

PRELIMINARY

78-8117-4445-3 11:59 AM UTC-06:00