

HyperLink 2.4 GHz 8 dBi Wireless LAN Round Patch Antenna

Model: HG2408P

Applications and Features

- Applications:**
- 2.4 GHz ISM Band
 - IEEE 802.11b and 802.11g Wireless LAN
 - Bluetooth®
 - Public Wireless Hotspot
 - WiFi

- Features:**
- Superior performance
 - Compact size, looks like a smoke detector
 - Durable UV-stable, UL flame rated radome
 - Low loss solid brass element
 - DC Short lightning protecting
 - Cable can be hidden when mounting
 - 10 inch coax lead
 - Can be installed for either vertical or horizontal polarization
 - Optional mounting brackets available



Description

Looks like a Smoke Detector!



This very compact round WiFi patch antenna provides 8 dBi gain with very broad coverage. It is suitable for both indoor and outdoor applications in the 2.4GHz ISM band, including IEEE 802.11b and 802.11g, Bluetooth® and public wireless hotspot applications. This antenna is lightweight and features an aesthetic UV-stable, UL flame rated white plastic radome which can also be painted to match the room or building structure. The HG2408P can be installed for horizontal or vertical polarization.

The HG2408P can be mounted flat against the wall or ceiling. Its unique design allows the cable to exit out of the side or from the back of the unit which is ideal for mounting in locations that require the cable to be hidden.

Specifications

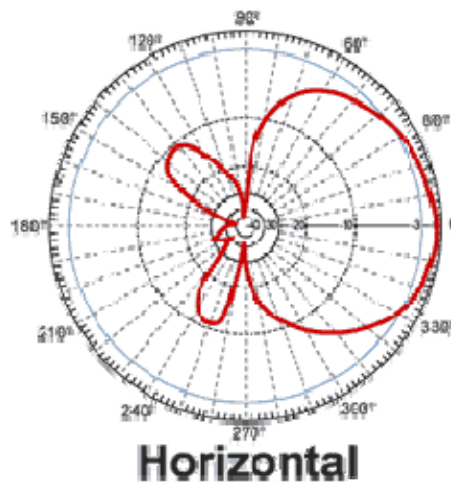
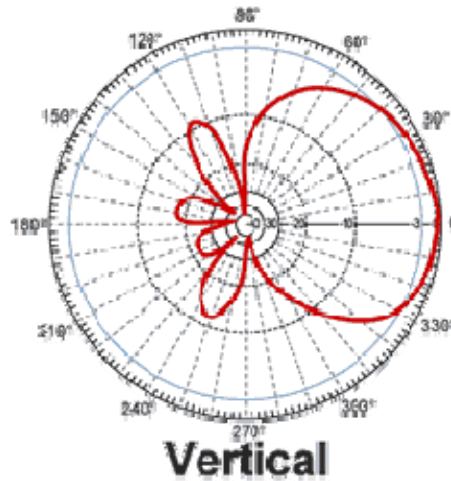
Electrical Specifications

Frequency	2400-2500 MHz
Gain	8 dBi
Horizontal Beam Width	75 degrees
Vertical Beam Width	65 degrees
Impedance	50 Ohm
VSWR	< 1.5:1 avg.
Lightning Protection	DC Short

Mechanical Specifications

Weight	0.3 lbs. (.13 Kg)
Dimensions	4" (102 mm) dia. x 1" (25 mm)
Radome Material	UV-inhibited Polymer
Flame Rating	UL 94HB
Operating Temperature	-40° C to 85° C (-40° F to 185° F)
Mounting	Four ¼ in. (6.3 mm) Holes
Polarization	Horizontal or Vertical
Wind Survival	>150 MPH (241 KPH)





Antenna Gain Patterns



Model: HG2408P

Mounting Options

L-Com's patch antennas offer several unique mounting options. They can be mounted flat against a wall, or to a mast using a pair of 2 inch U-bolts. The antennas also accept most tilt-and-swivel security camera brackets equipped with standard 1/4-20 threads.

	Description	Part Number
	Small Metal Tilt-and-Swivel Mounting Bracket for indoor wall mounting. Includes wall-mounting hardware.	HGX-PMT02
	Medium Plastic Tilt-and-Swivel Mounting Bracket for indoor wall mounting. Includes wall-mounting hardware.	HGX-PMT03
	Large Metal Tilt-and-Swivel Mounting Bracket for indoor and outdoor wall or mast mounting. Includes wall-mounting hardware. Can be mast-mounted using U-Bolt Kit (sold separately).	HGX-PMT04
	Universal Antenna Mount powder coated galvanized steel "DSS-style" arm for outdoor wall mounting. Requires a pair of 2 inch U-bolts (sold separately).	HGX-UMOUNT