

**FCC
Electromagnetic Compatibility
Test Report**

For

3M™ Model 8210 SelfCheckä System

**Security Systems Division
Library Systems
St. Paul, MN 55144-1000**

13 April 2004

Report Number F0204002

Prepared By:

CR-SEMS Product Safety
Building 76-1-01
410 East Fillmore Avenue
St. Paul, Minnesota 55144-1000

3M Product Safety 3M Center Building 76-1-01 St. Paul MN 55144-1000	Phone: 651 778 6279 Fax: 651 778 6252 E-mail: rdkuhn1@mmm.com	3M EMC Laboratory
--	--	--------------------------------

CERTIFICATE OF COMPLIANCE

USA STANDARD 47 CODE OF FEDERAL REGULATIONS

Radiated Emissions (FCC Part 15, Subpart B, Class A)
Conducted Emissions (FCC Part 15, Subpart B, Class A)
Radiated Emissions (FCC Part 15, Subpart C)
Conducted Emissions (FCC Part 15, Subpart C)

MANUFACTURER'S NAME: 3M Company
Security Systems Division
Library Systems
St. Paul, MN 55144-1000

NAME OF EQUIPMENT: SelfCheck™ System

MODEL NUMBER: 8210

SERIAL NUMBER: Production Prototype 1

TEST REPORT NUMBER: F0204002

DATE: 13 April 2004

As the responsible EMC Project Engineer, I hereby declare that the equipment tested, as specified in the test report, at the 3M Product Safety EMC Laboratory is in compliance with 47 CFR, Part 15, Subpart B and Subpart C. It is the manufacturer's responsibility to assure that additional production units of this model are manufactured with identical electrical and mechanical characteristics.

Roger D. Kuhn
EMC Test Engineer

3M	Model 8210 SelfCheck™ System	Report: F0204002	3M
EMC Laboratory	Product Safety	13 April, 2004	Page 3 of 39

TABLE OF CONTENTS

- Title Page
- Certificate of Compliance
- Table of Contents
- 1.0 Test Summary
- 2.0 Introduction
 - 2.1 Scope
 - 2.2 EUT Description and Operation
 - 2.3 Block Diagram
 - 2.4 Parts List
 - 2.5 Modifications to EUT
 - 2.6 Measurement Uncertainty
- 3.0 Applicable Documents
- 4.0 Conducted Emissions
 - 4.1 Test Procedure
 - 4.2 Test Criteria
 - 4.3 Test Results
- 5.0 Radiated Emissions
 - 5.1 Frequency Stability
 - 5.1.1 Test Procedure
 - 5.1.2 Test Criteria
 - 5.1.3 Test Results
 - 5.2 Emissions Bandwidth
 - 5.2.1 Test Procedure
 - 5.2.2 Test Criteria
 - 5.2.3 Test Results
 - 5.3 Spurious Emissions (12.5to 30 MHz.)
 - 5.3.1 Test Procedure
 - 5.3.2 Test Criteria
 - 5.3.3 Test Results
 - 5.4 Radiated Emissions (30 to 40000 MHz.)
 - 5.4.1 Test Procedure
 - 5.4.2 Test Criteria
 - 5.4.3 Test Results
- 6.0 List of Test Equipment
- 7.0 Labeling Information
- Appendix A Conducted Emissions Test Data
- Appendix B Emissions Bandwidth Test Data
- Appendix C Spurious Emissions Test Data
- Appendix D Radiated Emissions Test Data
- Appendix E Test Photographs

3M	Model 8210 SelfCheck™ System	Report: F0204002	3M
EMC Laboratory	Product Safety	13 April, 2004	Page 4 of 39

1.0 TEST SUMMARY

Test Report Number: F0204002

Requester: Ed Goff

Company: 3M
Safety and Security Systems Division
Library Systems
Building 209
St. Paul, MN 55144

Telephone Number: (651) 737-4736

Test Dates: 9, 10, 12, 17, 19, 20, 23 February 2004

Equipment Under Test: Model 8210 SelfCheck™ System

Date Of Receipt: 8 February 2004

Test Environment: Temperature: 20 to 30 degrees C
Relative Humidity: 30 to 70 % RH

Test Results: Passed the following tests:
Conducted Emissions: FCC Part 15 Subpart B Class A;
Radiated Emissions: FCC Part 15 Subpart B Class A;
Conducted Emissions: FCC Part 15 Subpart C;
Radiated Emissions: FCC Part 15 Subpart C;

Modifications: No modification was required.

Test Location: 3M Product Safety EMC Laboratory
Building 76
410 Fillmore Ave.
St. Paul, MN 55144-1000

3M	Model 8210 SelfCheck™ System	Report: F0204002	3M
EMC Laboratory	Product Safety	13 April, 2004	Page 5 of 39

2.0 INTRODUCTION

2.1 Scope

This report contains results describing the conformance of the Equipment Under Test (EUT) to FCC Part 15, Subpart B, "Class A" rules for unintentional radiators and FCC Part 15, Subpart C rules for intentional radiators.

This report is the confidential property of the client and applies only to the specific item tested under the stated test conditions. It is the manufacturer's responsibility to assure that additional production units of this model are manufactured with identical electrical and mechanical characteristics. This report shall not be reproduced without the written approval of the testing laboratory. When approval has been granted, the report shall be reproduced in its entirety.

The appropriate testing standards and references that were used are contained in Section 3.0. Worst case test data, test configuration, and photographs (worst case configuration) are provided in the Appendices. Equipment and documentation labeling information is contained in Section 7.0.

Subsequent tests are necessary from time to time on equipment taken at random from production. Re-testing of the EUT is also required when the EMC profile has been changed or is suspected of being changed.

The 3M Product Safety EMC Laboratory is recognized under the United States Department of Commerce National Institute of Standards and Technology's National Voluntary Laboratory Program (NVLAP) for satisfactory compliance with criteria established in Title 15, Part 285 Code of Federal Regulations. These criteria encompass the requirements of ISO/IEC Guide 25 and the relevant requirements of ISO 9002 (ANSI/ASQ Q92-1987) as suppliers of test results. Accreditation by the National Voluntary Laboratory Accreditation Program is awarded for specific services, listed on the Scope of Accreditation for: Electromagnetic Compatibility and Telecommunications, FCC, under Lab Code 200033. A complete copy of the Scope of Accreditation is available upon request. The FCC Site Registration Number is 93334.

The NVLAP accreditation or this test report does not in any way constitute or imply product certification, approval, or endorsement by NVLAP, NIST, or any agency of the U.S. Government.

3M	Model 8210 SelfCheck™ System	Report: F0204002	3M
EMC Laboratory	Product Safety	13 April, 2004	Page 6 of 39

2.2 EUT Descriptions and Operation

The Equipment Under Test (EUT) is the 3M™ Model 8210 SelfCheck System, Serial Number Production Prototype 1.

The 3M™ Model 8210 SelfCheck™ System allows library patrons to check out and check in library items on their own. The system emulates the check out and check in procedures performed by a librarian.

The reader has a transmit frequency of 13.56 MHz. And a power output level of 1.000 watts (30 dBm) as measured into a 50-ohm load. This maximum output of 1 watt (30 dBm) is factory preset.

The EUT has an integral antenna with areas of 49.0 square inches (0.032 square meters). A shaping ring (placed around the antenna) may be employed to limit the distance a tag may be detected from the edges of the antenna. The antenna is mounted in an antenna pad that is installed in the library's circulation counter and is connected to the Common Box via coax and SMA connector.

All tests were made using an input of 120 V RMS, 60 Hz, and single-phase power. The EUT was tested with an EMC program exercising all functions. The Reader was set to the fastest read time and was reading tags during all testing.

3M	Model 8210 SelfCheck™ System	Report: F0204002	3M
EMC Laboratory	Product Safety	13 April, 2004	Page 7 of 39

2.3 Block Diagram

Block Diagram is on a separate Exhibit.

2.4 Parts List

Parts List is on a separate Exhibit.

2.5 Modifications to the EUT

No modifications were required.

3M	Model 8210 SelfCheck™ System	Report: F0204002	3M
EMC Laboratory	Product Safety	13 April, 2004	Page 8 of 39

2.6 Measurement Uncertainty

The data and test results referenced in this report are true and accurate. However, there may be deviations within the calibration limits of the test equipment and facilities that can account for a nominal measurement deviation of ± 2 dB. Furthermore, EUT component and manufacturing process variables may result in additional deviation. The calculated confidence level is 95 %.

3.0 APPLICABLE DOCUMENTS

The following documents were used as reference for the limits and test procedures specified herein.

CFR 47	Part 15 Radio Frequency Devices	2002
ANSI C63.4	American National Standard for Methods of Measurement of Radio-Noise Emissions from Low-Voltage Electrical and Electronic Equipment in the range of 9 KHz to 40 GHz.	2000
CISPR 16-1	Specification for radio disturbance and immunity measuring apparatus and methods Part 1: Radio disturbance and immunity measuring apparatus	1998
CISPR 16-2	Specification for radio disturbance and immunity measuring apparatus and methods Part 2: Methods of measurements of disturbances and immunity	1996

3M	Model 8210 SelfCheck™ System	Report: F0204002	3M
EMC Laboratory	Product Safety	13 April, 2004	Page 9 of 39

4.0 CONDUCTED EMISSIONS

Conducted emissions testing was performed in accordance with ANSI C63.4. The limits are prescribed in FCC Part 15, Subpart B and in FCC Part 15, Subpart C.

4.1 Test Procedure

The EUT was placed in a shielded chamber for the tests and tested while exercising all functions with a dummy load attached to the Reader output terminal (See ANSI C63.4-1992 Paragraph 13.1.3.1).

A Line Impedance Stabilization Network (LISN) with a 50 Ohm / 50 micro Henry characteristic impedance was used to isolate the EUT and give accurate and repeatable readings. An EMI test receiver was used for the emissions measurements in the range from 450 KHz to 30 MHz. Initial sweep measurements were taken with the receiver in continuous frequency overview mode utilizing peak level signal detection. Acceptance analysis was performed on the initial measurements to determine which discrete frequencies to maximize. These frequencies were remeasured utilizing quasi-peak detection. Measurement results were automatically calculated via software running the EMI receiver. The final quasi-peak measurements recorded were determined by the following formula:

$$\text{Result (dB}\mu\text{V)} = \text{receiver reading (dB}\mu\text{V)} + \text{LISN CF (dB)} + \text{cable loss (dB)}$$

4.2 Test Criteria

The FCC Part 15, Subpart B, "Class A" conducted limits are given below.

<u>Frequency</u> (MHz)	<u>Limit</u> Quasi-Peak (dB μ V)
0.450 to 1.705	60.00
1.705 to 30.00	69.54

The FCC Part 15, Subpart C conducted limits are given below.

<u>Frequency</u> (MHz)	<u>Limit</u> Quasi-Peak (dB μ V)
0.450 to 30.00	47.96

The lower limit shall apply at the transition frequency.

3M	Model 8210 SelfCheck™ System	Report: F0204002	3M
EMC Laboratory	Product Safety	13 April, 2004	Page 10 of 39

4.3 Test Results

The EUT met conducted emission requirements for FCC Part 15, Subpart B, "Class A" and met FCC Part 15, Subpart C. All the conducted emissions test data is shown in Appendix A. The worst-case peak and quasi-peak emissions were as follows:

<u>Frequency</u> <u>(MHz)</u>	<u>Limit</u> <u>(dBμV)</u>	<u>L1 - Line</u> <u>Q-P (dBμV)</u>	<u>L2 - Neutral</u> <u>Q-P (dBμV)</u>	<u>Passing Margin</u> <u>(dB)</u>
14.740	47.96	44.0	44.5	3.46

FCC Part 15, Subpart C limit is shown.

3M	Model 8210 SelfCheck™ System	Report: F0204002	3M
EMC Laboratory	Product Safety	13 April, 2004	Page 11 of 39

5.0 RADIATED EMISSIONS

Radiated emissions testing was performed in accordance with ANSI C63.4. The limits are prescribed in FCC Part 15, Subpart B and in FCC Part 15, Subpart C.

5.1 Frequency Stability

The Frequency Stability testing was performed in accordance with ANSI C63.4 and FCC Part 15 to insure that the intentional radiator frequency stability was within the allowable limits for input power and temperature variations.

5.1.1 Test Procedure

The Frequency Stability was measured using the radiated signals from the EUT so that the measurement equipment would not load the radio frequency circuits. An EMI receiver was used for the frequency stability measurements. The Reader was put into a continuous output mode through instructions from the host computer (test mode of operation). 1) The frequency was measured while the input AC power to the External Power Supply was varied over the required input voltage range. 2) The frequency was also measured while the ambient air temperature was varied over the required ambient temperature range (at startup, 2 minutes, 5 minutes, and 10 minutes).

5.1.2 Test Criteria

The FCC Part 15, Subpart C for Frequency Stability Limits versus Supply Voltage is given below.

<u>Carrier Frequency</u> (MHz)	<u>Voltage Range</u> (% of Nominal Supply)	<u>Max.Frequency Change</u> (%)
13.56	85 % to 115 %, (102 to 138 V RMS)	+/- 0.01 %

The FCC Part 15, Subpart C for Frequency Stability Limits versus Temperature is given below.

<u>Carrier Frequency</u> (MHz)	<u>Temperature Range</u> (degrees C)	<u>Max. Frequency Change</u> (%)
13.56	-20 to +50	+/- 0.01 %

3M	Model 8210 SelfCheck™ System	Report: F0204002	3M
EMC Laboratory	Product Safety	13 April, 2004	Page 12 of 39

5.1.3 Test Results

The EUT met the FCC Part 15, Subpart C Frequency Stability requirement.

Carrier Frequency Stability versus Supply Voltage

<u>Carrier Frequency</u> <u>(MHz)</u>	<u>Lowest Frequency</u> <u>(MHz)</u>	<u>Highest Frequency</u> <u>(MHz)</u>	<u>Frequency Change</u> <u>(%)</u>
13.5601	13.5599	13.5602	+/- 0.0015 %

Carrier Frequency Stability versus Temperature

<u>Carrier Frequency</u> <u>(MHz)</u>	<u>Lowest Frequency</u> <u>(MHz)</u>	<u>Highest Frequency</u> <u>(MHz)</u>	<u>Frequency Change</u> <u>(%)</u>
13.5601	13.5599	13.5602	+/- 0.0015 %

Frequency Stability Test Results

Temperature	Input Voltage		
	10.8 VDS	12.0 VDC	13.2 VDC
-20° C	13.5601	13.5601	13.5601
0° C	13.5602	13.5602	13.5602
23° C	13.5601	13.5601	13.5601
50° C	13.5601	13.5599	13.5601
55° C	13.5599	13.5599	13.5599

3M	Model 8210 SelfCheck™ System	Report: F0204002	3M
EMC Laboratory	Product Safety	13 April, 2004	Page 13 of 39

5.2 Emission Bandwidth

The EUT was placed in an anechoic chamber and the Emission Bandwidth testing was preformed in accordance with ANSI C63.4 and FCC Part 15, Paragraph 15.225. The Emission Bandwidth measurements were made to determine the intentional radiator frequency and determine the level of electromagnetic energy radiated at that frequency and at the band edges from the EUT.

5.2.1 Test Procedure

A measurement antenna (loop) was positioned at a distance of 5 meters (to insure far field measurements) from the center of the EUT. An EMI receiver was used for the emissions measurements. Initial sweep measurements were taken with the receiver in continuous frequency overview mode utilizing peak level signal detection. The intentional radiator frequency and band edge frequencies utilizing quasi-peak detection were then maximized. Maximizing a frequency involves finding the angle of the highest emission levels by rotating the EUT 360 degrees (sampling at least every 4 degrees). Then the antenna, which was fixed at 1-meter height, was rotated until the highest emissions levels found. Measurement results were automatically calculated via software running the EMI receiver. The final quasi-peak measurements recorded were determined by the following formula:

Result (dB μ V/m) = receiver level (μ V) + antenna factor (dB/m) + cable loss (dB) - preamp gain (dB) + lineal conversion (dB).

5.2.2 Test Criteria

The FCC Part 15 Subpart C, Paragraph 15.225 Carrier Frequency Limits are given below.

Lower Band Edge	Upper Band Edge
<u>(MHz)</u>	<u>(MHz)</u>
13.553	13.567

3M	Model 8210 SelfCheck™ System	Report: F0204002	3M
EMC Laboratory	Product Safety	13 April, 2004	Page 14 of 39

The FCC Part 15, Subpart C radiated limits are given below.

Frequency (MHz)	Distance (m)	Field Strength (dB μ V/m)
1.705 to 13.110	10	48.62
13.110 to 13.410	10	59.58
13.410 to 13.553	10	69.55
13.553 to 13.567	10	103.00
13.567 to 13.710	10	69.55
13.710 to 14.010	10	59.58
14.010 to 30.000	10	48.62

Note: A 40 dB/decade extrapolation factor was used per 15.31.

5.2.3 Test Results

The EUT met the FCC Part 15, Subpart C Emission Bandwidth requirements. The intentional radiator frequency was within the allowed band and all maximized quasi-peak measurements for the EUT were below the quasi-peak limits. The test scan is shown in Appendix B.

Frequency (MHz)	Level (dB μ V/m)	Limit (dB μ V/m)	Passing Margin (dB)	Turntable (degrees)	Antenna Orientation/Angle (Polarity/degrees)
13.5602 ¹	63.6	103.00	40.40	200	Antenna was at -30 degrees from the X-axis.
13.553 ²	28.9	69.55	40.65	200	Antenna was at -30 degrees from the X-axis.
13.567 ²	29.1	69.55	40.45	200	Antenna was at -30 degrees from the X-axis.

1 - Intentional Radiator Frequency

2 - Band edges measured with a receiver bandwidth setting of 1 KHz. Per ANSI C63.4 Paragraph 13.1.7.

3M	Model 8210 SelfCheck™ System	Report: F0204002	3M
EMC Laboratory	Product Safety	13 April, 2004	Page 15 of 39

5.3 Spurious Emissions (12.5 to 30 MHz.)

The EUT was placed in an anechoic chamber and the Spurious Emissions testing was preformed in accordance with ANSI C63.4 and FCC Part 15, Subpart C. The Spurious Emission measurements were made to determine the level of electromagnetic energy radiated from the EUT.

5.3.1 Test Procedure

A measurement antenna (loop) was positioned at a distance of 5 meters (to insure far field measurements) from the center of the EUT. An EMI receiver was used for the emissions measurements. Initial sweep measurements were taken with the receiver in continuous frequency overview mode utilizing peak level signal detection. Acceptance analysis of these sweeps was used to determine which discrete frequencies, other than the intentional radiator frequency and band edge frequencies, were to be maximized. Maximizing a frequency involves finding the angle of the highest emission levels by rotating the EUT 360 degrees (sampling at least every 4 degrees). Then the antenna, which was fixed at 1-meter height, was rotated until the highest emissions levels found. Final measurements were taken utilizing quasi-peak detection. Measurement results were automatically calculated via software running the EMI receiver. The final measurements recorded were determined by the following formula:

Result (dB μ V/m) = receiver level (μ V) + antenna factor (dB/m) + cable loss (dB) - preamp gain (dB) + lineal conversion (dB).

5.2.2 Test Criteria

The FCC Part 15, Subpart C radiated limits are given below.

Frequency (MHz)	Distance (m)	Field Strength (dB μ V/m)
1.705 to 13.110	10	48.62
13.110 to 13.410	10	59.58
13.410 to 13.553	10	69.55
13.553 to 13.567	10	103.00
13.567 to 13.710	10	69.55
13.710 to 14.010	10	59.58
14.010 to 30.000	10	48.62

Note: A 40 dB/decade extrapolation factor was used per 15.31.

3M	Model 8210 SelfCheck™ System	Report: F0204002	3M
EMC Laboratory	Product Safety	13 April, 2004	Page 16 of 39

5.3.3 Test Results

The EUT met the FCC Part 15, Subpart C Spurious Emissions (12.5 to 30 MHz.) requirements. All maximized quasi-peak measurements for the EUT were below the quasi-peak limits. Test data is shown in Appendix C. The worst-case quasi-peak emission was as follows:

Frequency (MHz)	Level (dBμV/m)	Limit (dBμV/m)	Passing Margin (dB)	Turntable (degrees)	Antenna Orientation/Angle (Polarity/degrees)
13.5715	42.3	69.55	27.25	200	Antenna was at -30 degrees from the X- axis.

3M	Model 8210 SelfCheck™ System	Report: F0204002	3M
EMC Laboratory	Product Safety	13 April, 2004	Page 17 of 39

5.4 Radiated Emissions (30 to 40000 MHz)

The EUT was placed in an anechoic chamber and the Spurious Emissions testing was performed in accordance with ANSI C63.4, FCC Part 15, Subpart B "Class A", and FCC Part 15, Subpart C. The Radiated Emission measurements were made to determine the level of electromagnetic energy radiated from the EUT.

5.4.1 Test Procedure

A measurement antenna was positioned at a distance of 3 meters from the center of the EUT. An EMI receiver was used for the emissions measurements in the range of 30 MHz to 2000 MHz (the upper limit of measurement is determined by Paragraph 15.33). Initial sweep measurements were taken with the receiver in continuous frequency overview mode utilizing peak level signal detection. Acceptance analysis of these sweeps was made to determine which discrete frequencies were to be maximized. Maximizing a frequency involves finding the angle of the highest emission levels by rotating the EUT 360 degrees (sampling at least every 4 degrees) and varying antenna height between 1 and 4 meters at the angle of highest emissions levels found. Final measurements were taken utilizing quasi-peak detection (peak and average detectors were used above 1000 MHz). Measurement results were automatically calculated via software running the EMI receiver. The final measurements recorded were determined by the following formula:

Result (dBμV/m) = receiver level (μV) + antenna factor (dB/m) + cable loss (dB) - preamp gain (dB) + lineal conversion (dB).

5.4.2 Test Criteria

The FCC Part 15, Subpart C radiated limits are given below.

Frequency (MHz)	Distance (m)	Field Strength (dB μV/m)
30 to 88	10	29.54
88 to 216	10	33.06
216 to 960	10	35.56
960 to 40000	10	43.52

3M	Model 8210 SelfCheck™ System	Report: F0204002	3M
EMC Laboratory	Product Safety	13 April, 2004	Page 18 of 39

The FCC Part 15, Subpart B, "Class A" radiated limits are given below. The lower limit shall apply at the transition frequency.

Frequency (MHz)	Distance (m)	Field Strength (dB μ V/m)
30 to 88	10	39.08
88 to 216	10	43.52
216 to 960	10	46.44
960 to 1000	10	49.54
1000 to 40000	3	59.5 and 79.5*

* Per 15.35(B)

5.34.3 Test Results

The EUT met the FCC Part 15, Subpart C and the FCC Part 15, Subpart B, "Class A" Radiated Emissions (30 to 40000MHz.) requirements. All maximized quasi-peak measurements for the EUT were below the quasi-peak limits. Test data is shown in Appendix D. The worst-case quasi-peak emission was as follows:

Frequency (MHz)	Level (dB μ V/m)	Limit (dB μ V/m)	Passing Margin (dB)	Turntable (degrees)	Antenna (Meters/Polarity)
637.31	30.5	35.56 ¹	5.06	190	1.25/V
30.00	21.4	39.08	17.68	0	1.0/V

1 - This is a harmonic of the intentional radiator; therefore the lower limit level (FCC Part 15 Subpart C) is shown.

3M	Model 8210 SelfCheck™ System	Report: F0204002	3M
EMC Laboratory	Product Safety	13 April, 2004	Page 19 of 39

6.0 LIST OF TEST EQUIPMENT

The following test equipment was used to perform the indicated tests. All of the test equipment was calibrated by an accredited calibration laboratory or by the manufacturer. All calibration intervals are one year. All equipment calibrations, test procedures, and the test facility are traceable to the standards of the National Institute of Standards and Technology (NIST). The test facility site attenuation verification results fall within the normalized site attenuation (NSA) criteria for open area test sites using volumetric measurements.

CONDUCTED EMISSIONS

EMCO LISN, Model 3825-2, Serial No. 1039 (cal due date: 08 Sep 04)
 Solar High Pass Filter, Model 8131 - 5.0 (cal due date: 28 Sep 04)
 Rohde & Schwarz EMI Receiver, Model ESBI 52, S/N 835387/003 (cal due date: 09 Sep 04)
 Rohde & Schwarz EMI Receiver Display, Serial No. 835518/001 (cal due date: 09 Sep 04)
 Rohde & Schwarz ES-K1, ES-K2, & ES-K12 EMI Software, Version 1.60

Frequency Stability/Power Output

Advantest Spectrum Analyzer, Model R3272A, Serial No. J00233 (cal due date: 09 Sep 04)
 Thermotron Environmental Chamber, Model SM-3SS, Serial No. 19972-S (cal due date: 17 June 04)

RADIATED EMISSIONS

ElectroMetrics Large Loop Antenna. Model ALR25M, Serial No. 603 (cal due date: 08 Sep 04)
 EMCO Biconilog Antenna, Model 3143, Serial No. 1111 (cal due date: 09 Sep 04)
 HP Pre-Amplifier, Model 8447D, Serial No. 2944A08064 (cal due date: 09 Sep 04)
 Rohde & Schwarz EMI Receiver, Model ESBI 52, S/N 835387/003 (cal due date: 09 Sep 04)
 Rohde & Schwarz EMI Receiver Display, Serial No. 835518/001 (cal due date: 09 Sep 04)
 Rohde & Schwarz ES-K1, ES-K2, & ES-K12 EMI Software, Version 1.60

3M	Model 8210 SelfCheck™ System	Report: F0204002	3M
EMC Laboratory	Product Safety	13 April, 2004	Page 20 of 39

TEST FACILITY

Lindgren Semi-Anechoic Chamber, Model 11867A, serial No. 01211 (verification due date: 28 Apr 04)

The radiated and conducted emission measurements were performed in our Anechoic Chamber located at 3M Building 76, 410 Fillmore Street, St. Paul, MN. Details concerning the site are on file with the FCC laboratory Division in Columbia Maryland.

The Facility Registration Number is 93334, 31-March – 2003.

3M	Model 8210 SelfCheck™ System	Report: F0204002	3M
EMC Laboratory	Product Safety	13 April, 2004	Page 21 of 39

7.0 LABELING INFORMATION

The FCC (Federal Communications Commission) requires the following labeling information. Since the equipment has intentional and unintentional radiators, it must be labeled as a digital device and as an intentional radiator.

Labels on the Product

The following statement shall be placed in a conspicuous location on the device:

This device complies with Part 15 of the FCC Rules. Operation is subject to the following two conditions: (1) this device may not cause harmful interference, and (2) this device must accept any interference received, including interference that may cause undesired operation.

FCC ID: _____

Labels in the Manuals

The following statement shall be placed in a prominent location in the text of the user manual:

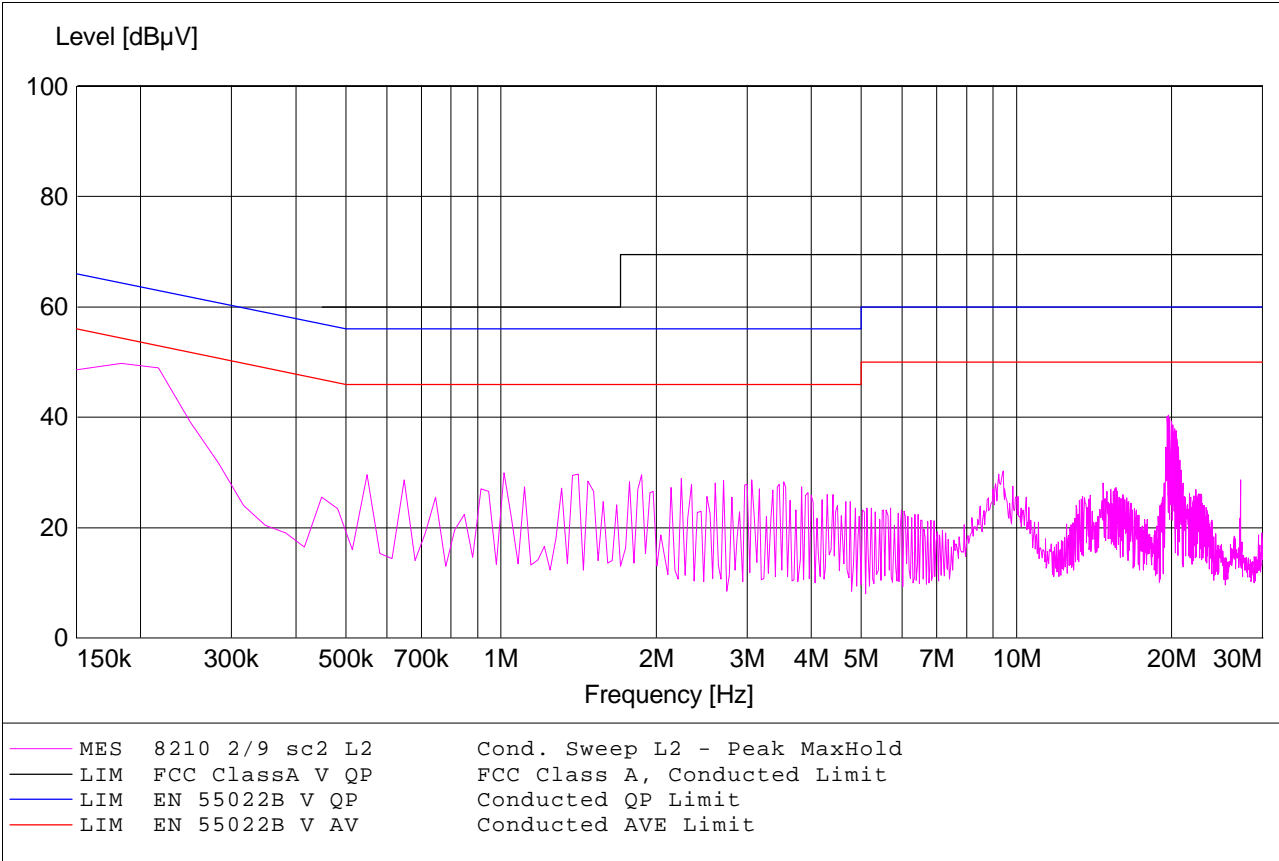
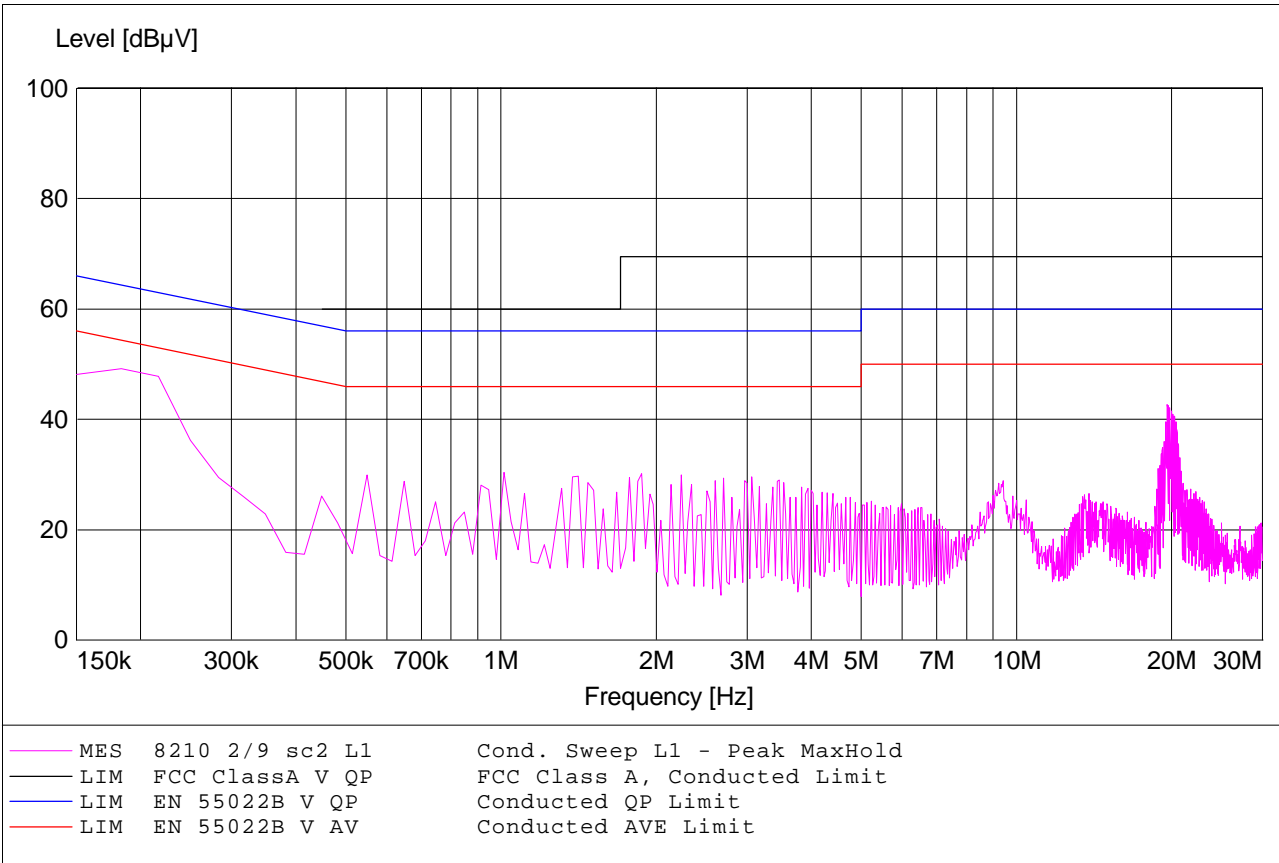
NOTE: This equipment has been tested and found to comply with the limits for a Class A digital device, pursuant to Part 15 of the FCC Rules. These limits are designed to provide a reasonable protection against harmful interference when the equipment is operated in a commercial environment. This equipment generates, uses, and can radiate radio frequency energy and, if not installed and used in accordance with the instruction manual, may cause harmful interference to radio communications. Operation of this equipment in a residential area is likely to cause harmful interference in which case the user will be required to correct the interference at his own expense.

FCC ID: _____

NO MODIFICATIONS. Modifications to this device shall not be made without the written consent of 3M, Incorporated. Unauthorized modifications may void the authority granted under Federal Communications Commission Rules permitting the operation of this device.

3M	Model 8210 SelfCheck™ System	Report: F0204002	3M
EMC Laboratory	Product Safety	13 April, 2004	Page 22 of 39

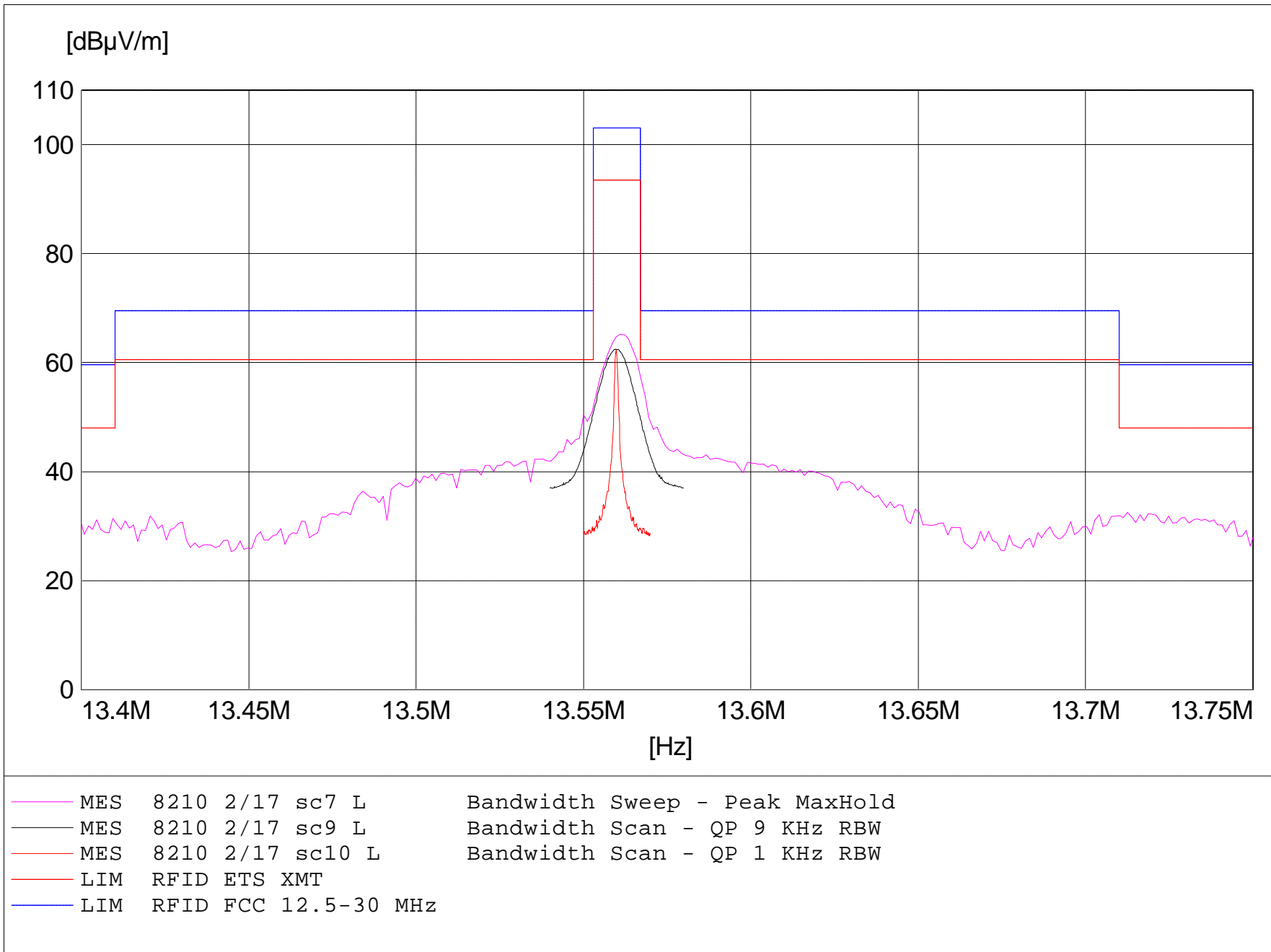
Appendix A
Conducted Emissions Test Data

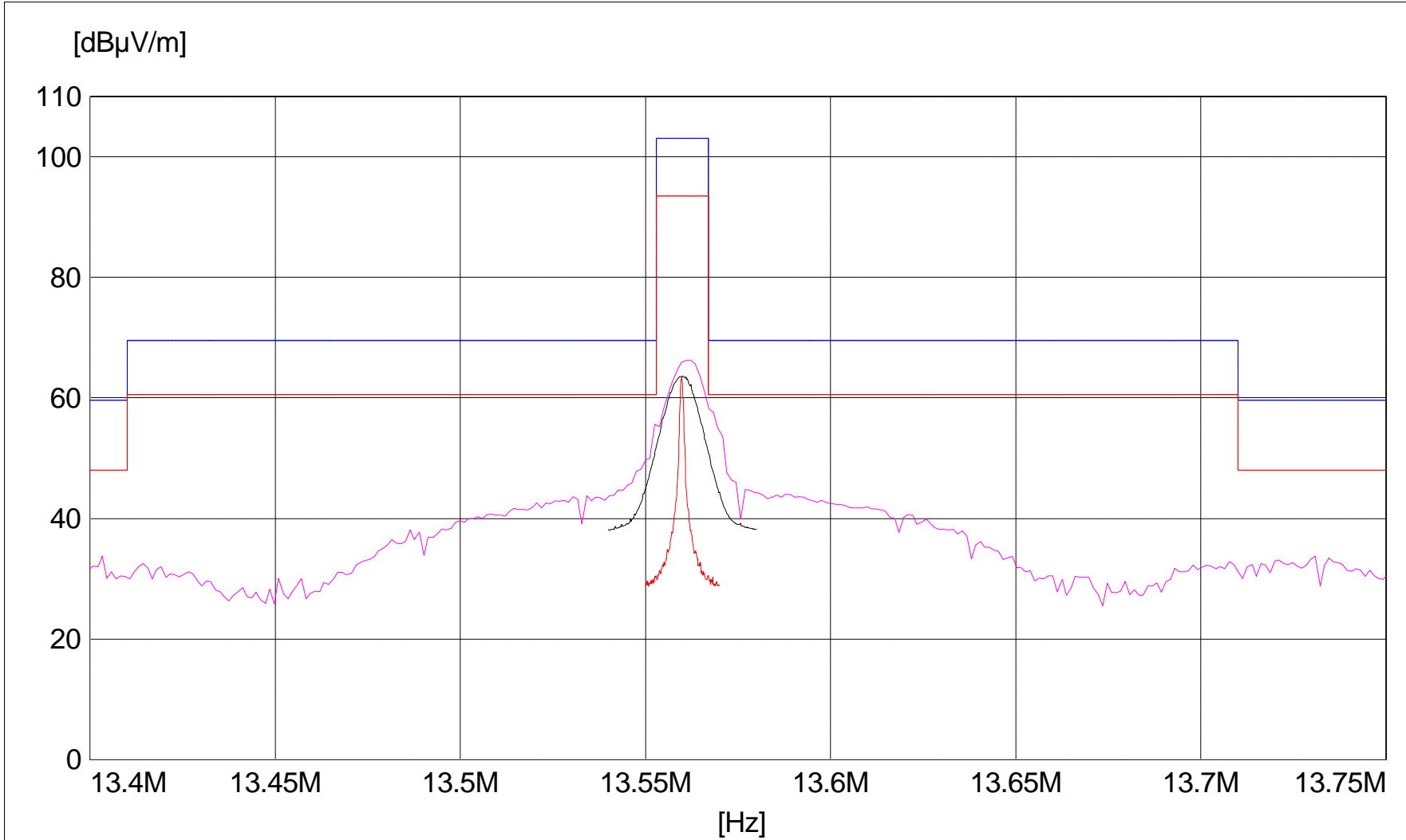


3M	Model 8210 SelfCheck™ System	Report: F0204002	3M
EMC Laboratory	Product Safety	13 April, 2004	Page 25 of 39

Appendix B

Emission Bandwidth





—	MES	8210	2/17	sc3	L	Bandwidth Sweep - Peak MaxHold
—	MES	8210	2/17	sc5	L	Bandwidth Scan - QP 9 KHz RBW
—	MES	8210	2/17	sc6	L	Bandwidth Scan - QP 1KHz RBW
—	LIM	RFID	ETS	XMT		
—	LIM	RFID	FCC	12.5-30	MHz	

3M	Model 8210 SelfCheck™ System	Report: F0204002	3M
EMC Laboratory	Product Safety	13 April, 2004	Page 28 of 39

Appendix C

Spurious Emissions (12.5 to 30 MHz.)

SPURIOUS EMISSIONS



SHEET 1 OF 1

TEST REPORT # 0204002

EUT MODEL # 8210

EUT SERIAL # PP #1

DESCRIPTION Self-Check™ System

FREQ. (MHz)	MAXIMIZED QP SIGNAL		LIMIT LINE (dBμV/m)	PASSING MARGIN (dB)	MAXIMIZED POSITION		REMARKS
	H/V	(dBμV/m)*			TURNTABLE (°)	ANTENNA (M)	
No Ring							
13.567	V	27.9	69.6	41.7	240	1.0	Antenna was at -30 degrees from the X-axis.
13.5485	V	41.2	69.6	28.4	240	1.0	Antenna was at -30 degrees from the X-axis.
27.122	V	10.0	48.6	38.6	240	1.0	Antenna was at -30 degrees from the X-axis.
18.806	V	21.2	48.6	27.4	240	1.0	Antenna was at -30 degrees from the X-axis.
With Ring							
13.567	V	29.1	69.6	40.5	200	1.0	Antenna was at -30 degrees from the X-axis.
13.5715	V	42.3	69.6	27.3	200	1.0	Antenna was at -30 degrees from the X-axis.
27.12/2	V	14.4	48.6	34.2	200	1.0	Antenna was at -30 degrees from the X-axis.
18.936	V	20.7	48.6	27.9	200	1.0	Antenna was at -30 degrees from the X-axis.

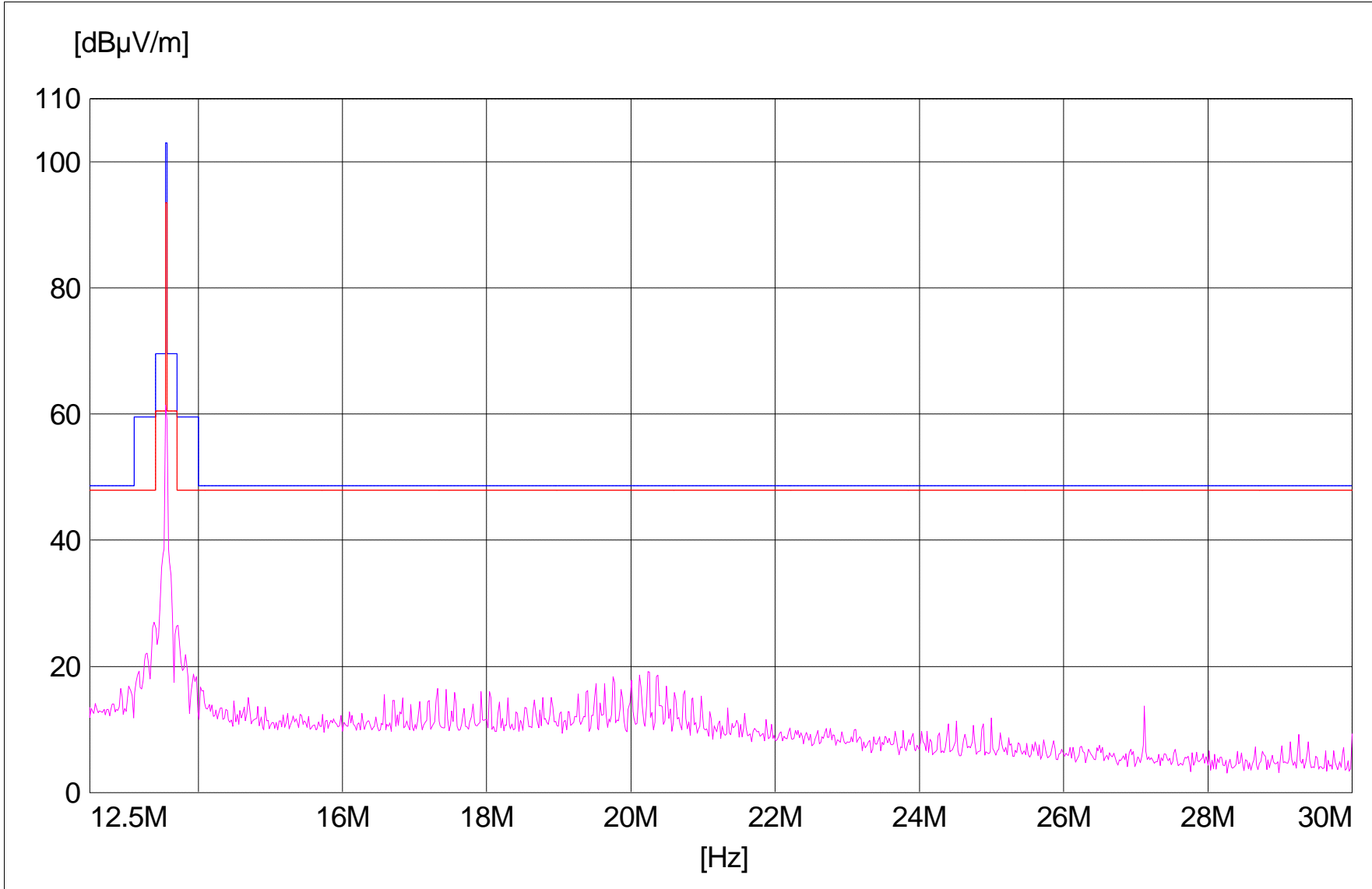
1 - Equipment noise baseline.

Test Engineer: _____

Date: 17 February 2004

Reviewed by: _____

Date: 13 April 2004



— MES 8210 2/24 sc1 L SE Spur. Emissions - Peak MaxHold
 — LIM RFID ETS XMT
 — LIM RFID FCC 12.5-30 MHz

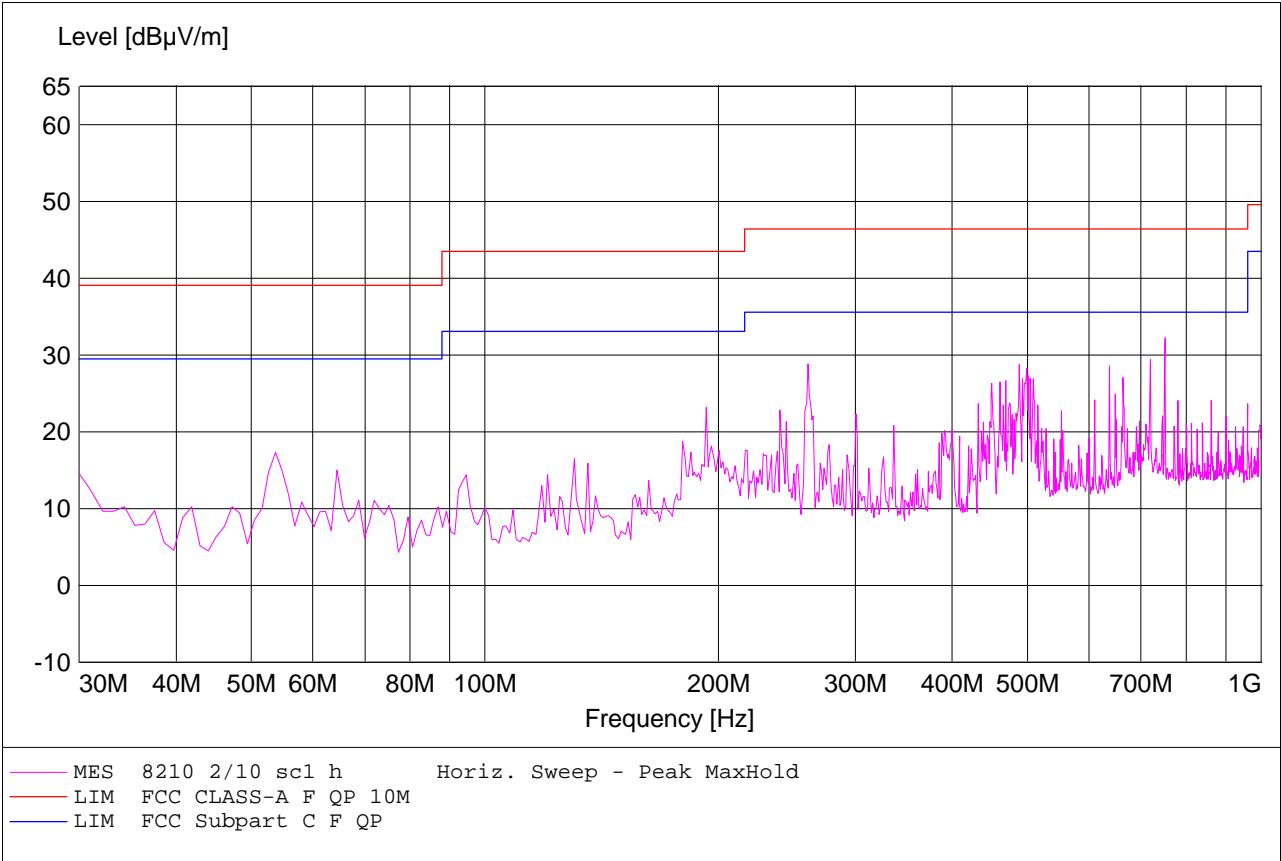
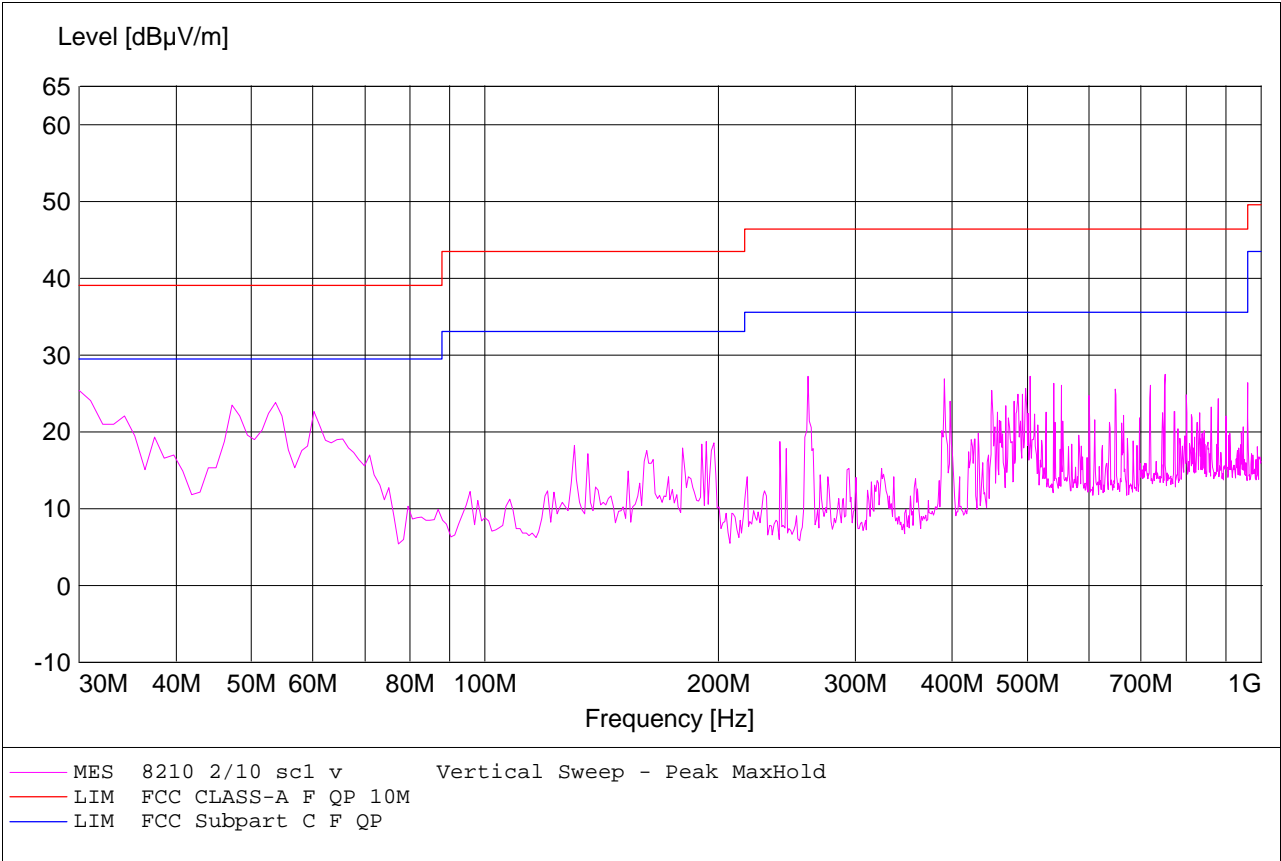
3M	Model 8210 SelfCheck™ System	Report: F0204002	3M
EMC Laboratory	Product Safety	13 April, 2004	Page 31 of 39

This Page Left Blank Intentionally

3M	Model 8210 SelfCheck™ System	Report: F0204002	3M
EMC Laboratory	Product Safety	13 April, 2004	Page 32 of 39

Appendix D

Radiated Emissions



3M	Model 8210 SelfCheck™ System	Report: F0204002	3M
EMC Laboratory	Product Safety	13 April, 2004	Page 35 of 39

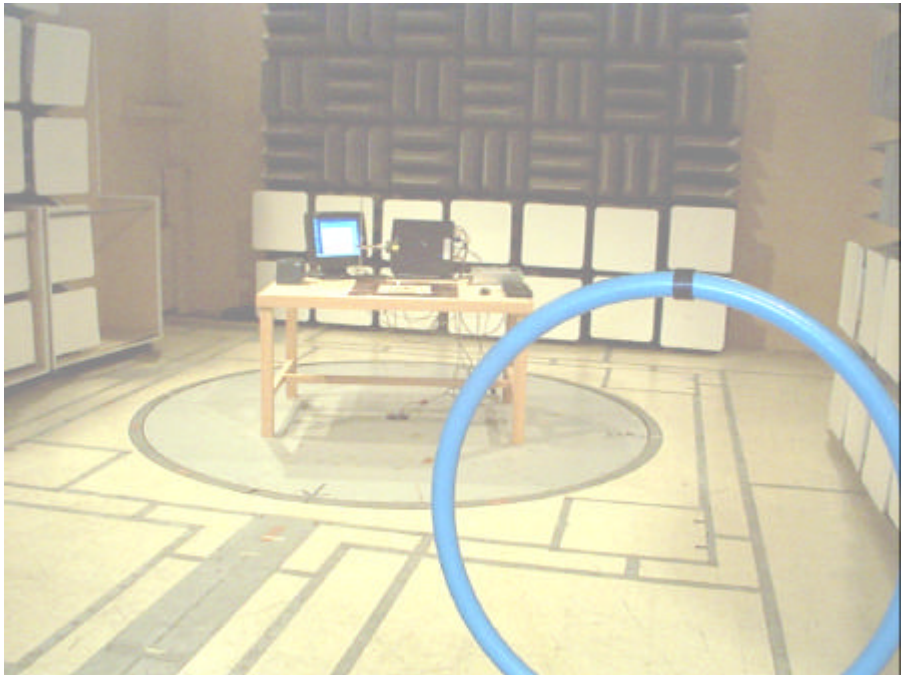
Appendix E

Photographs

3M	Model 8210 SelfCheck™ System	Report: F0204002	3M
EMC Laboratory	Product Safety	13 April, 2004	Page 36 of 39



Conducted Emissions



Bandwidth and Spurious Emissions

3M	Model 8210 SelfCheck™ System	Report: F0204002	3M
EMC Laboratory	Product Safety	13 April, 2004	Page 37 of 39



Radiated Emissions (30-1000 MHz)

3M	Model 8210 SelfCheck™ System	Report: F0204002	3M
EMC Laboratory	Product Safety	13 April, 2004	Page 38 of 39



System without Ring



System with the Shaping Ring

3M	Model 8210 SelfCheck™ System	Report: F0204002	3M
EMC Laboratory	Product Safety	13 April, 2004	Page 39 of 39

End of Report