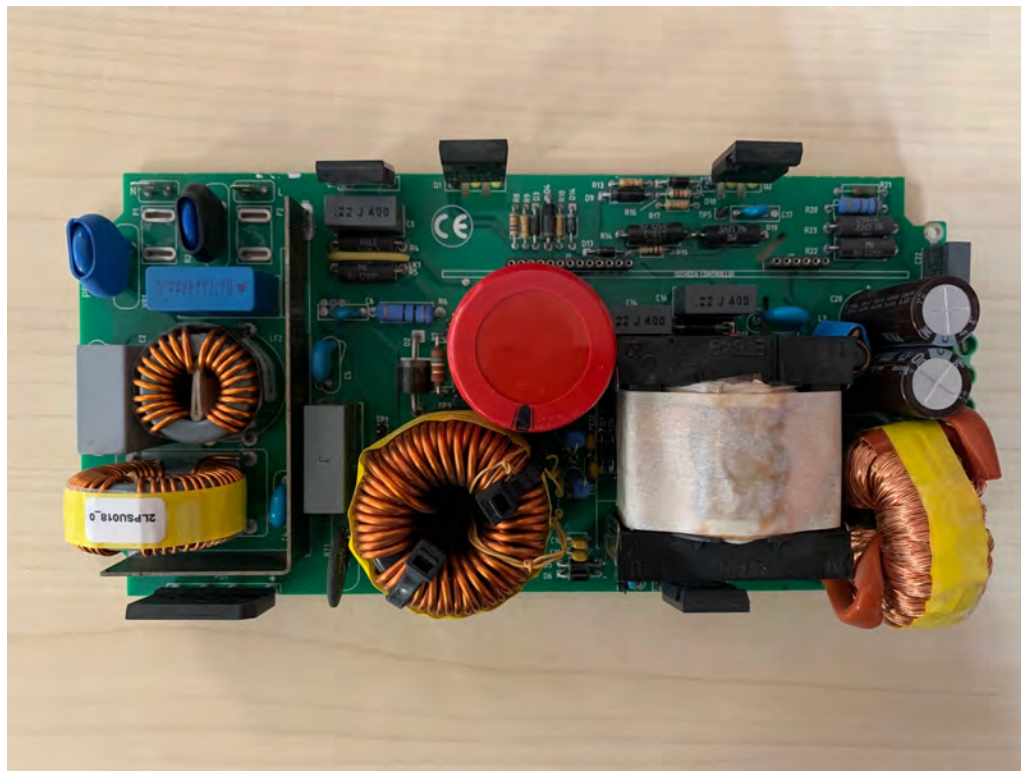
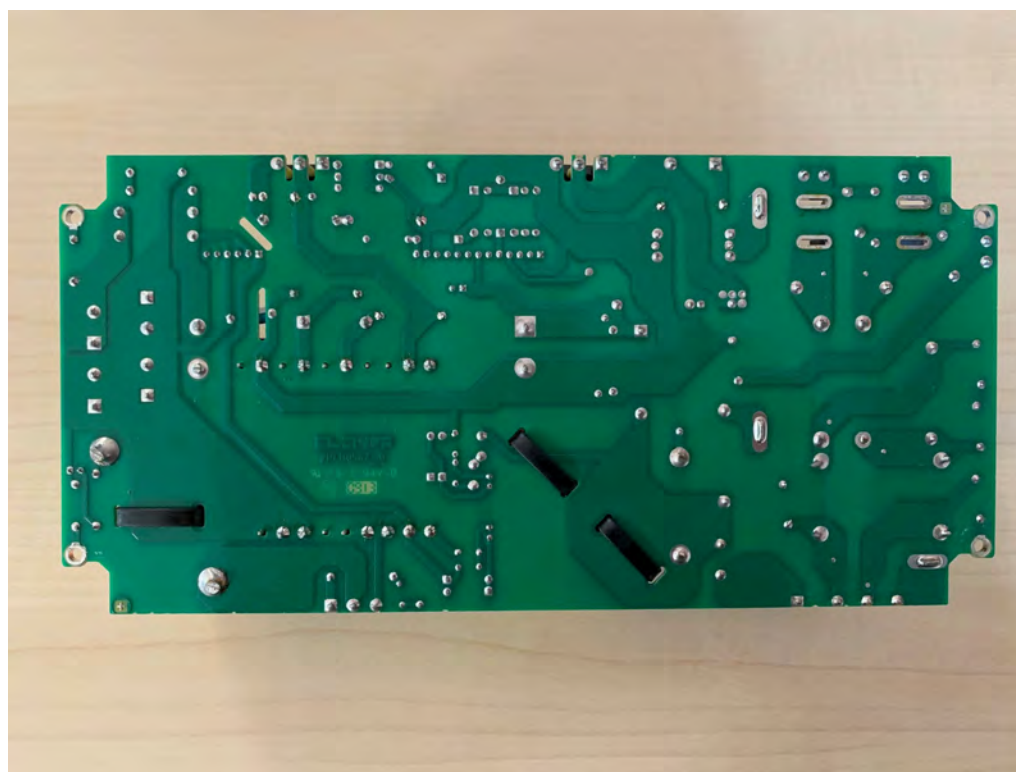


APPLICANT: BROADCAST ELECTRONICS INC.  
MODEL: **ETG500**

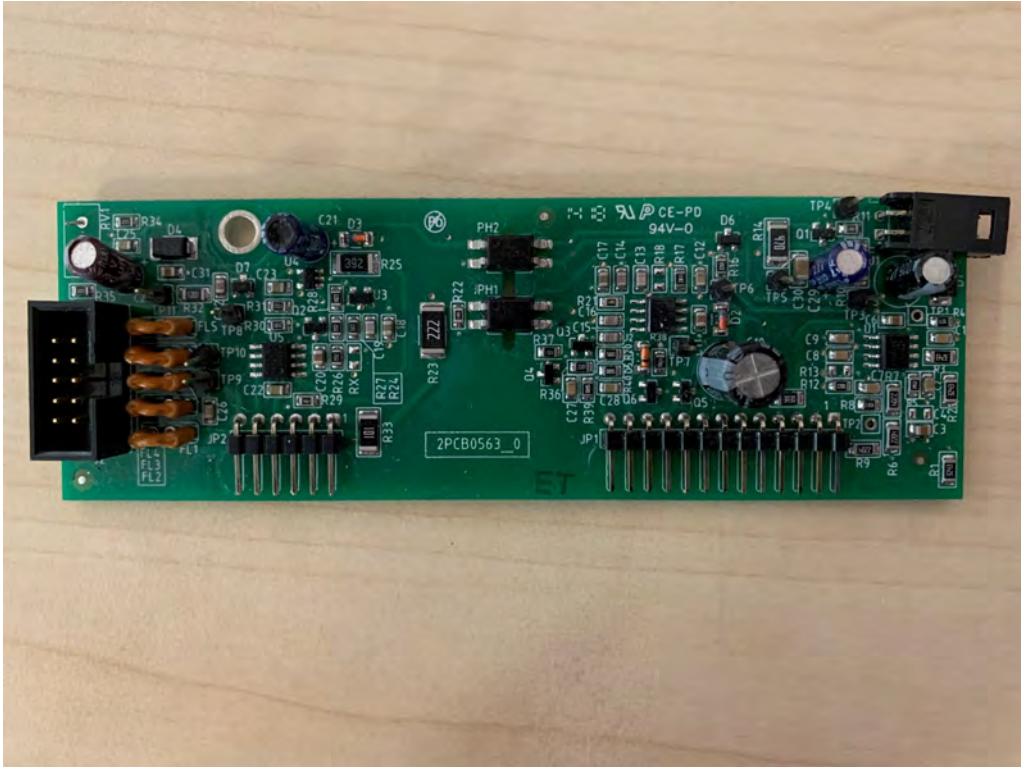
1KW 2A520-1 POWER SUPPLY BOARD TOP



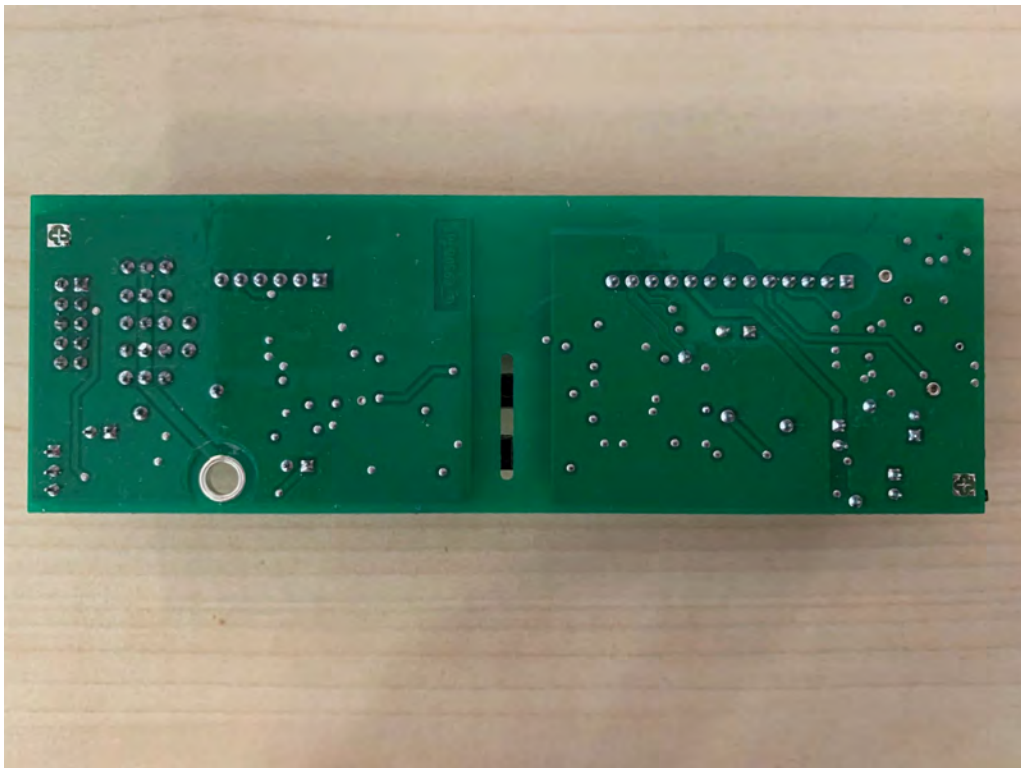
1KW 2A520-1 POWER SUPPLY BOARD BOTTOM



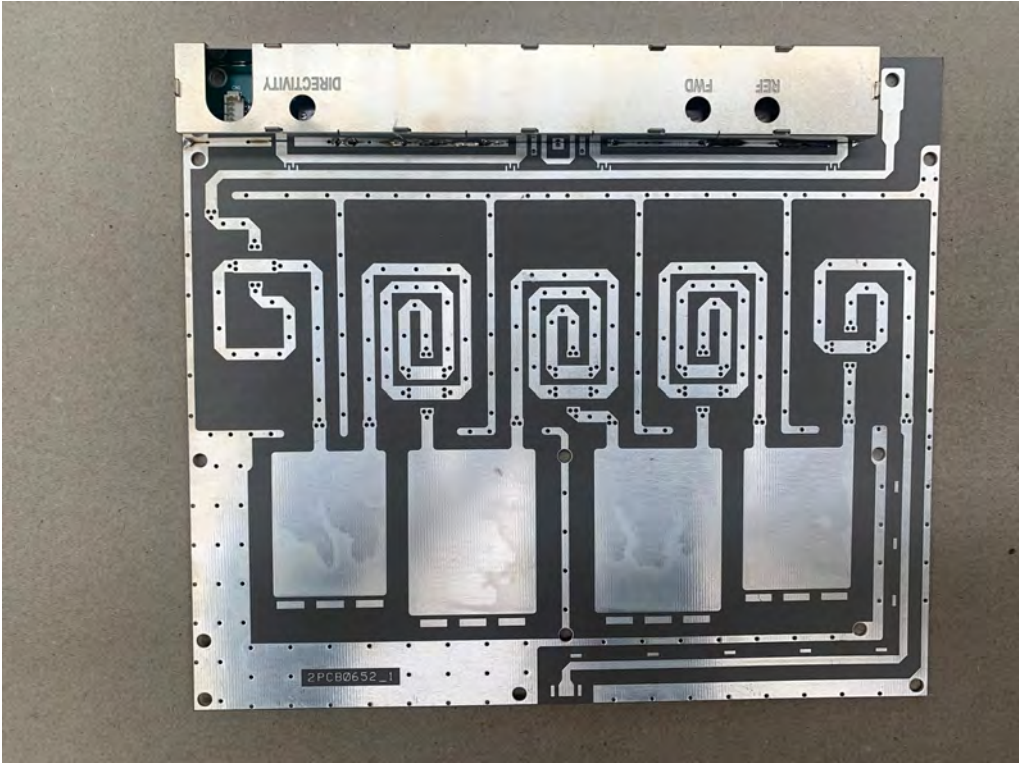
1KW 3A520-1 POWER SUPPLY CONTROL BOARD TOP



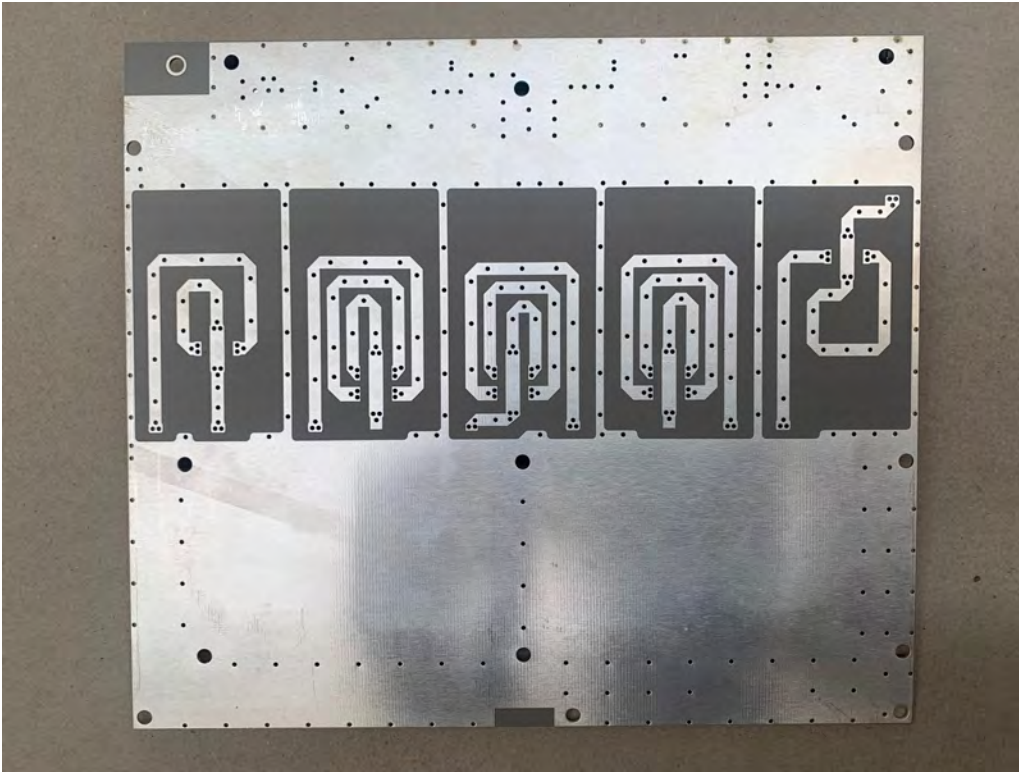
1KW 3A520-1 POWER SUPPLY CONTROL BOARD BOTTOM



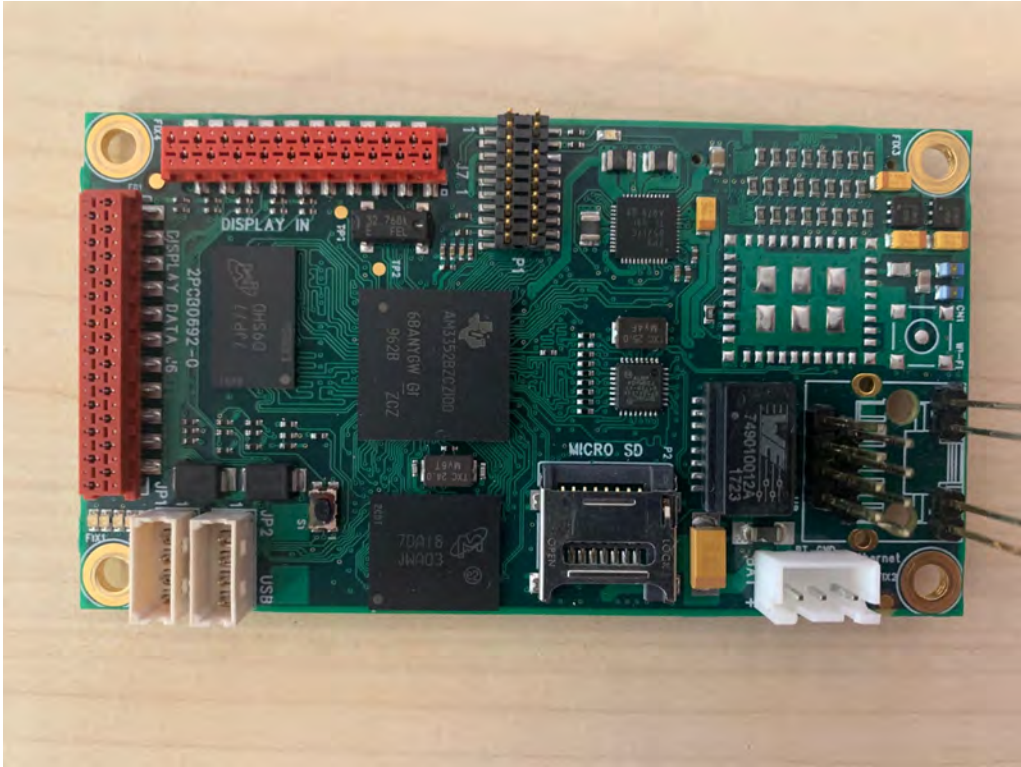
2U3K4A282-2 LOW PASS FILTER TOP



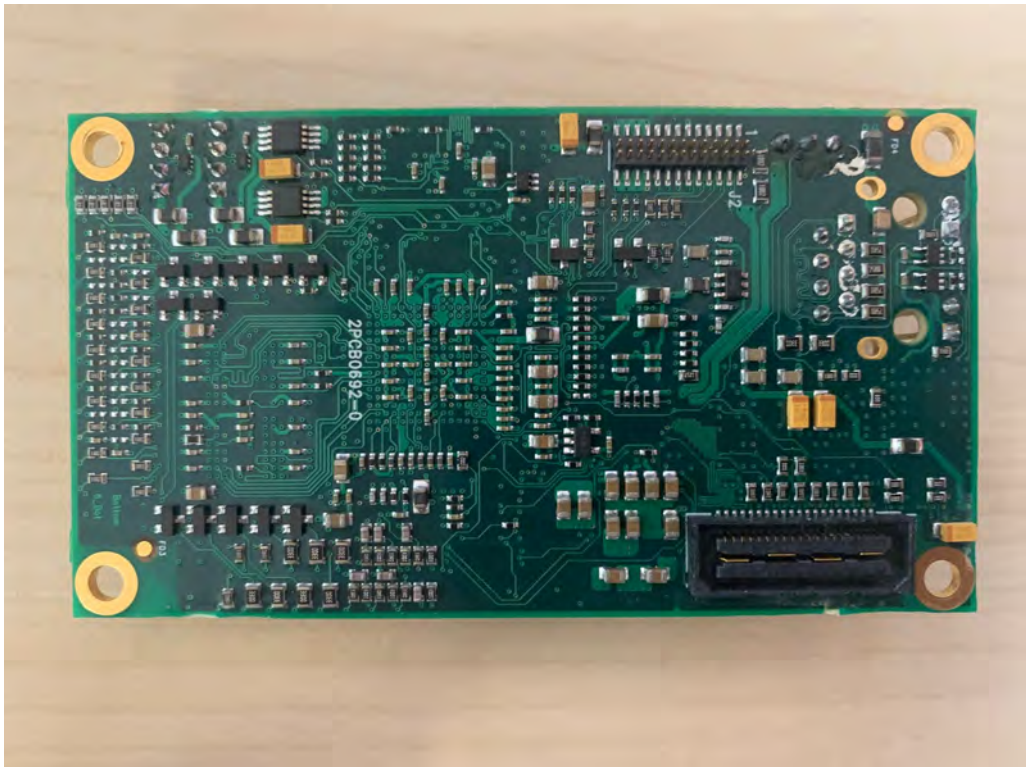
2U3K4A282-2 LOW PASS FILTER BOTTOM



2U3KDE283-0 MICRO STREAMING TOP



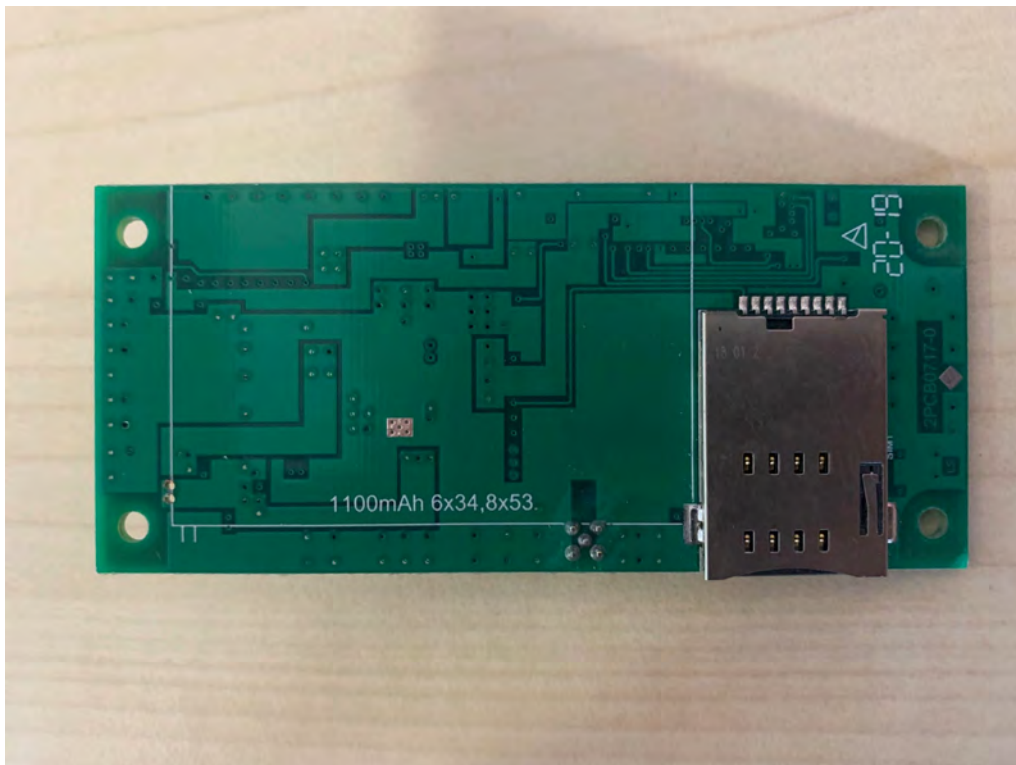
2U3KDE283-0 MICRO STREAMING BOTTOM



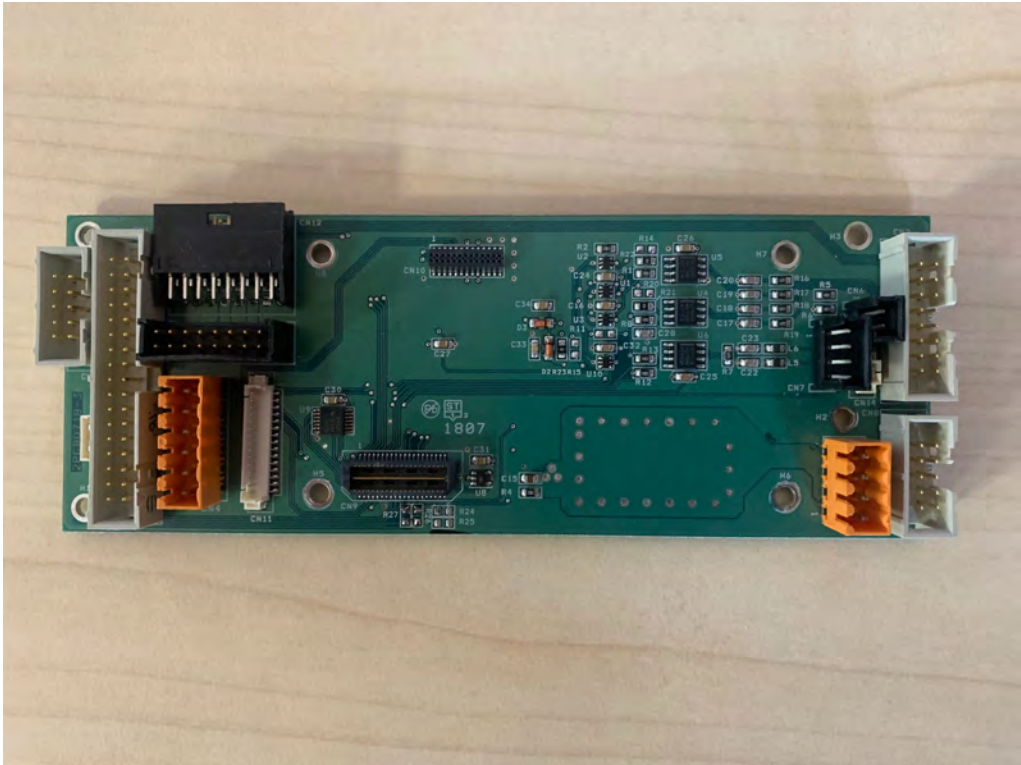
2U3KIA284-0 MODEM TOP



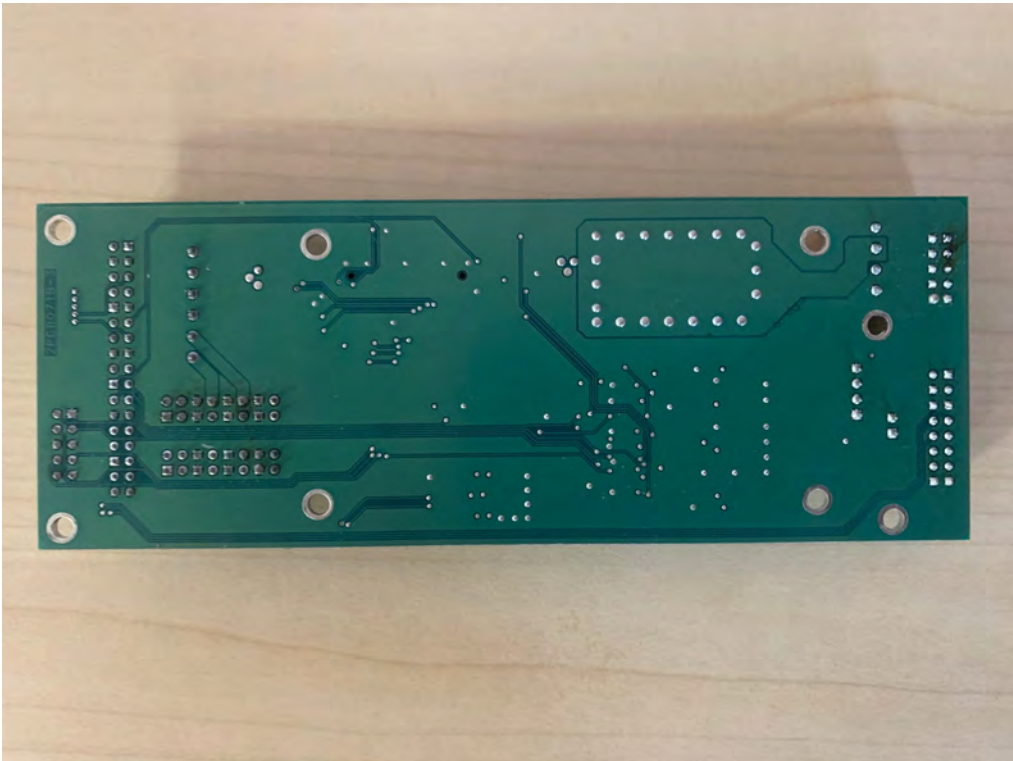
2U3KIA284-0 MODEM BOTTOM



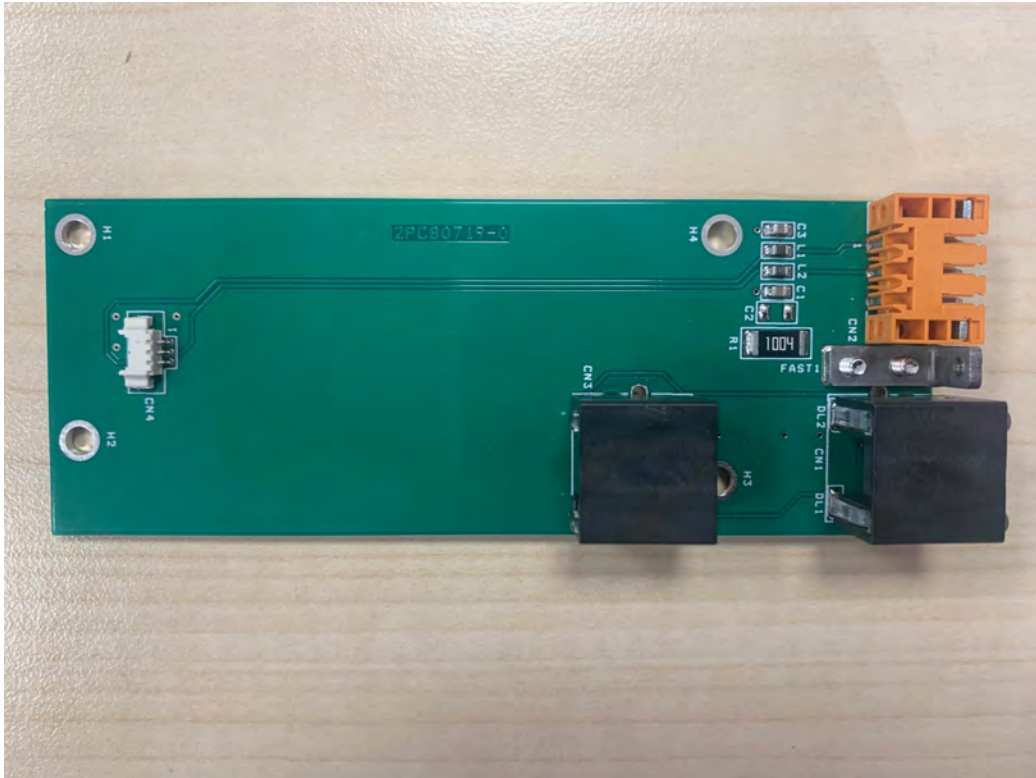
**2U3KLB284-2 AUX BOARD TOP**



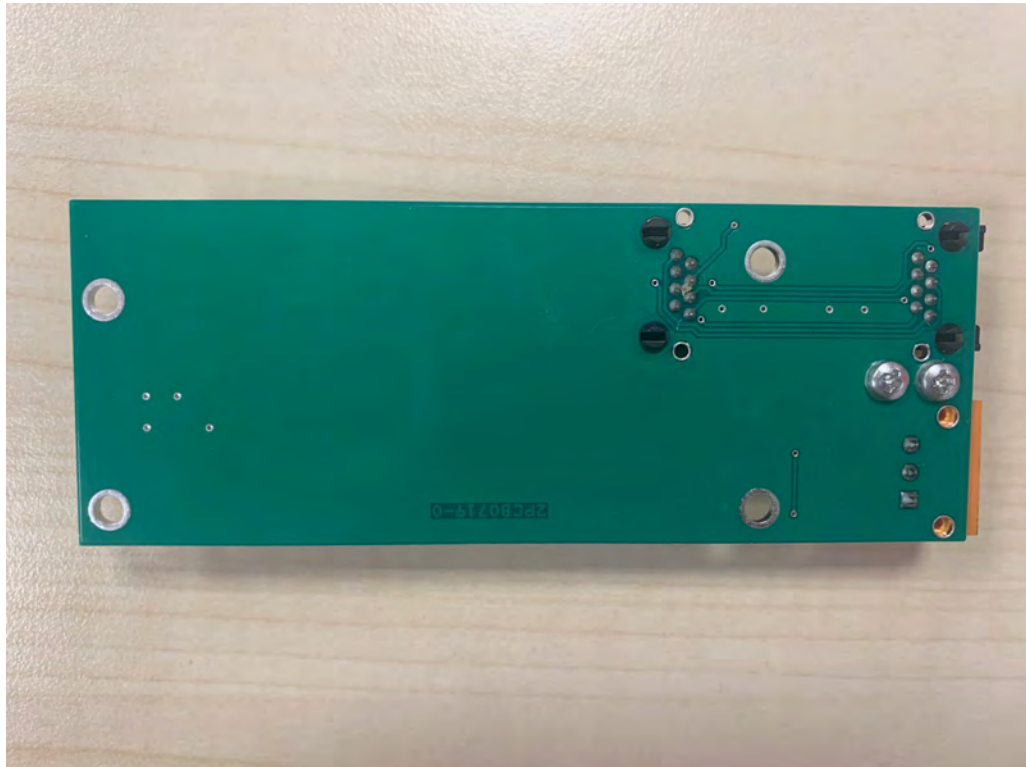
**2U3KLB284-2 AUX BOARD BOTTOM**



**2U3KMA284-0 ETHERNET BOARD TOP**



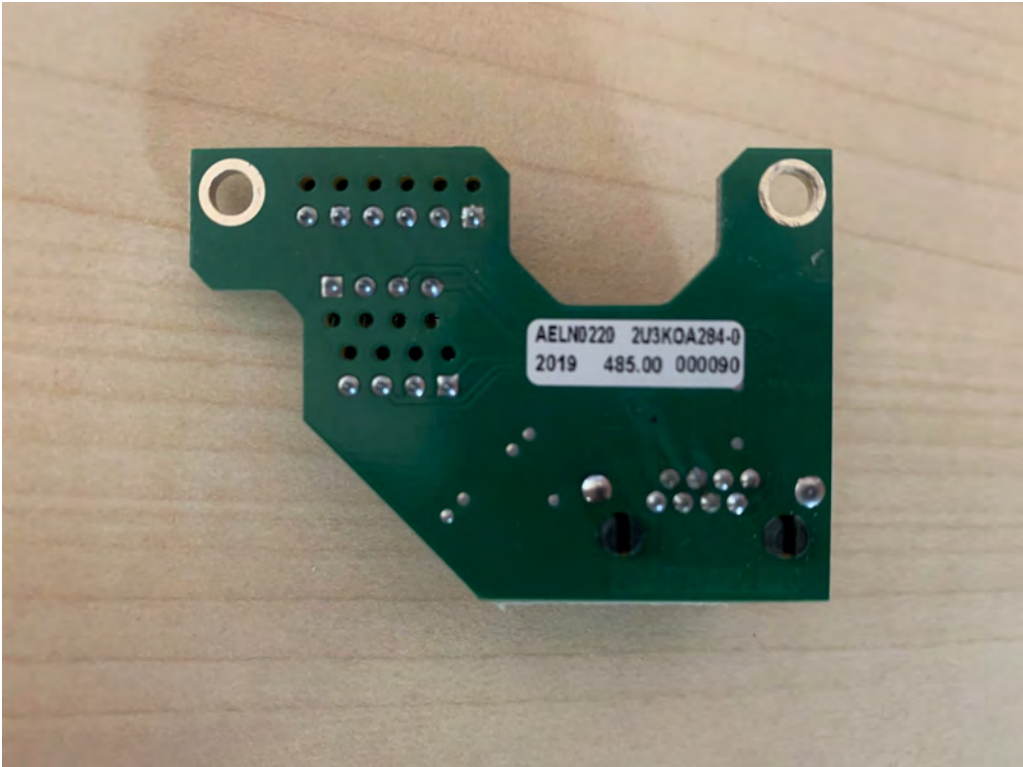
**2U3KMA284-0 ETHERNET BOARD BOTTOM**



2U3KOA284-0 PIGGY BOARD TOP

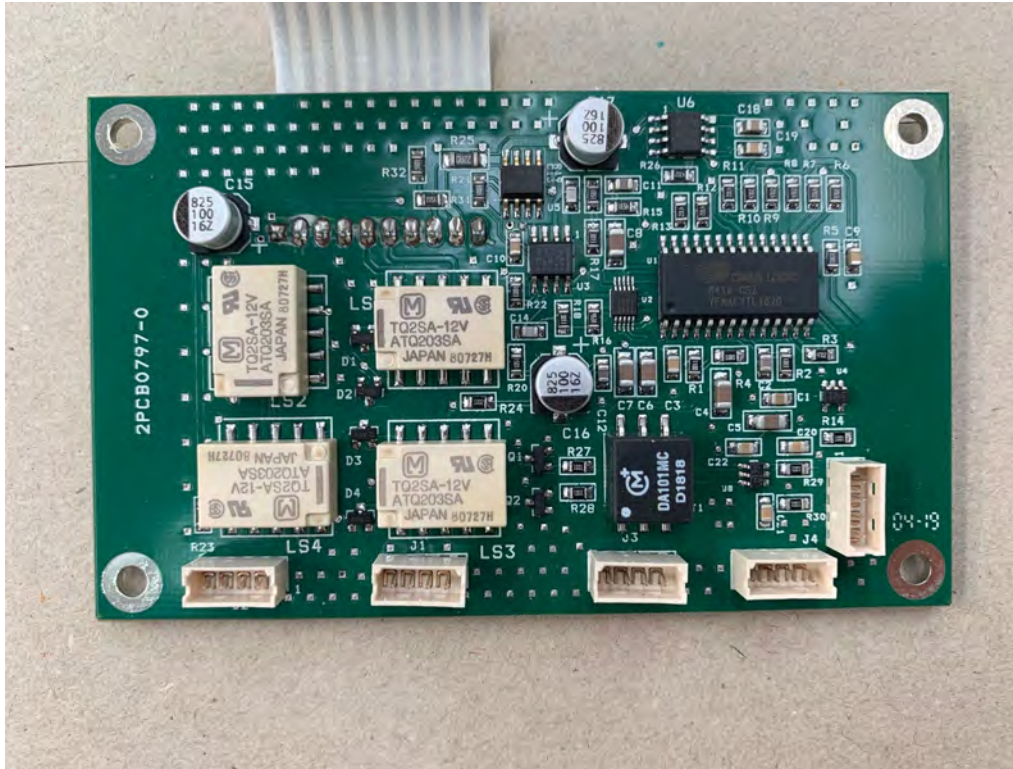


2U3KOA284-0 PIGGY BOARD BOTTOM

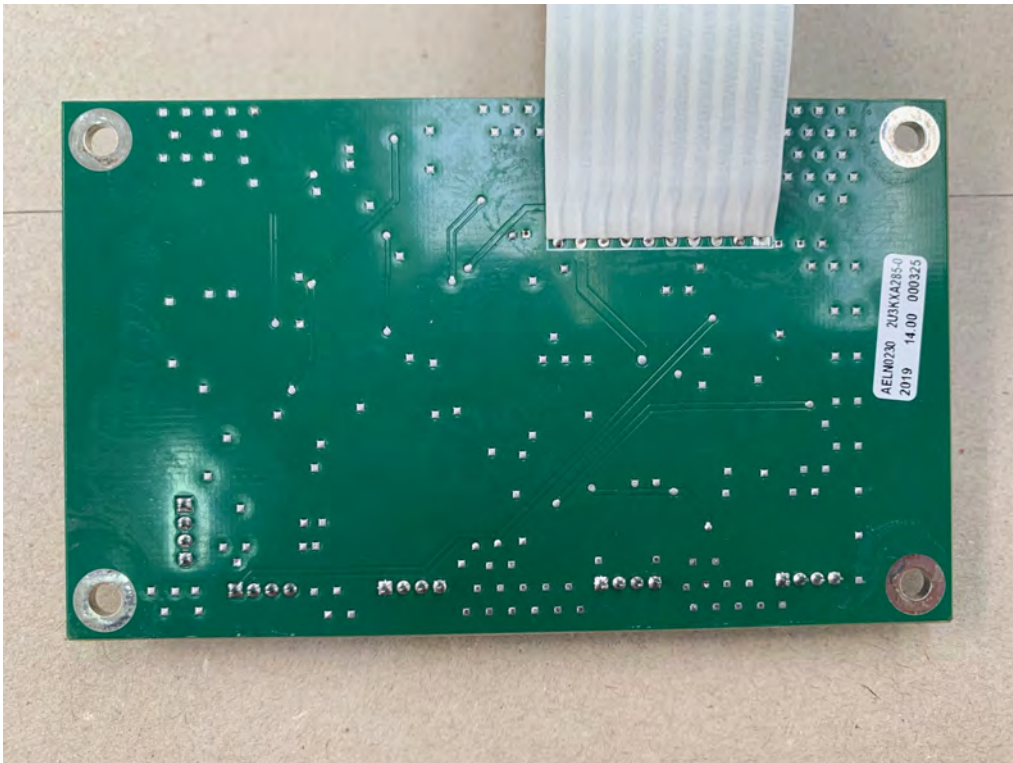




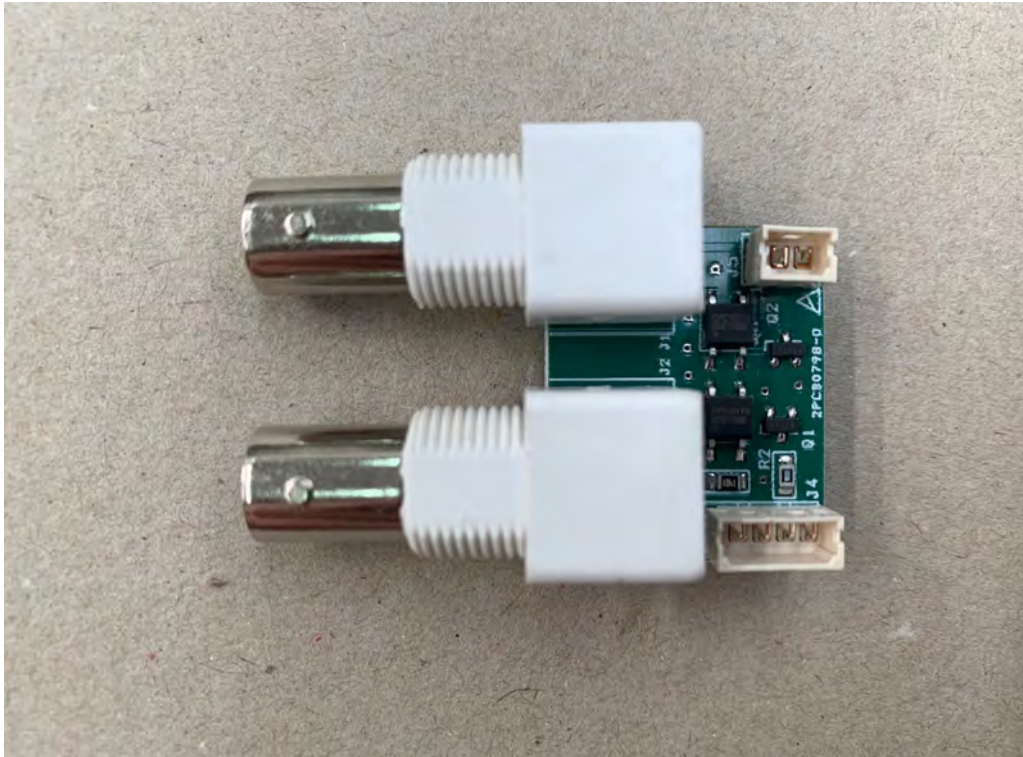
**2U3KXA285-0 XLR/MPX SWITCHING TOP**



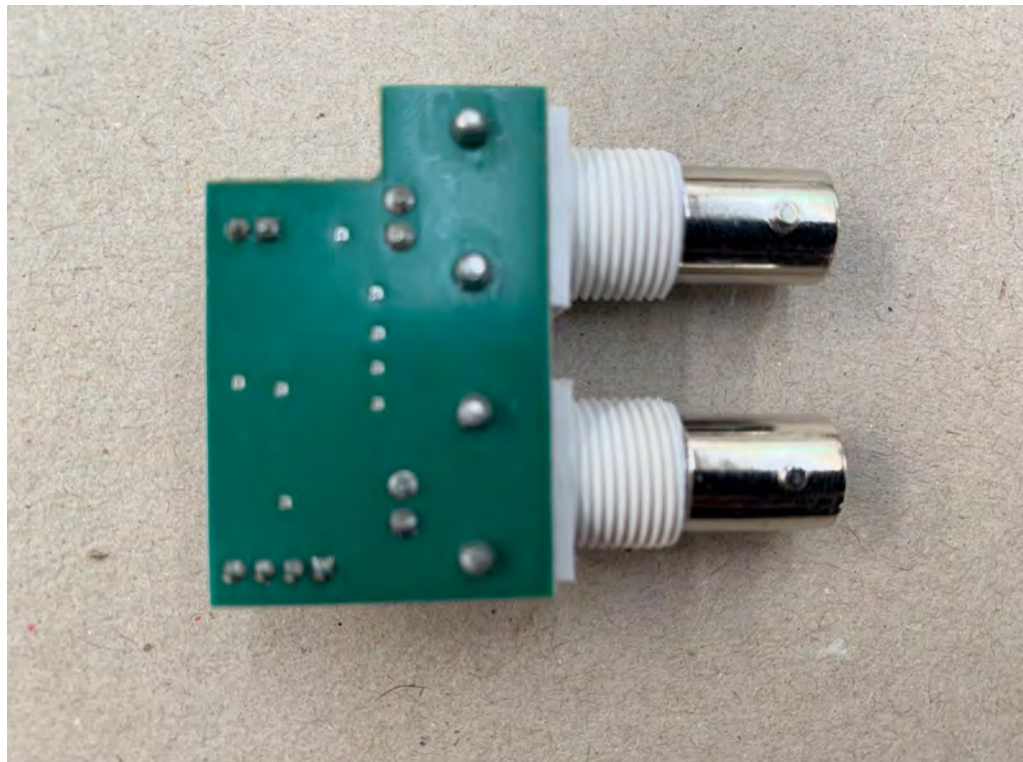
**2U3KXA285-0 XLR/MPX SWITCHING BOTTOM**



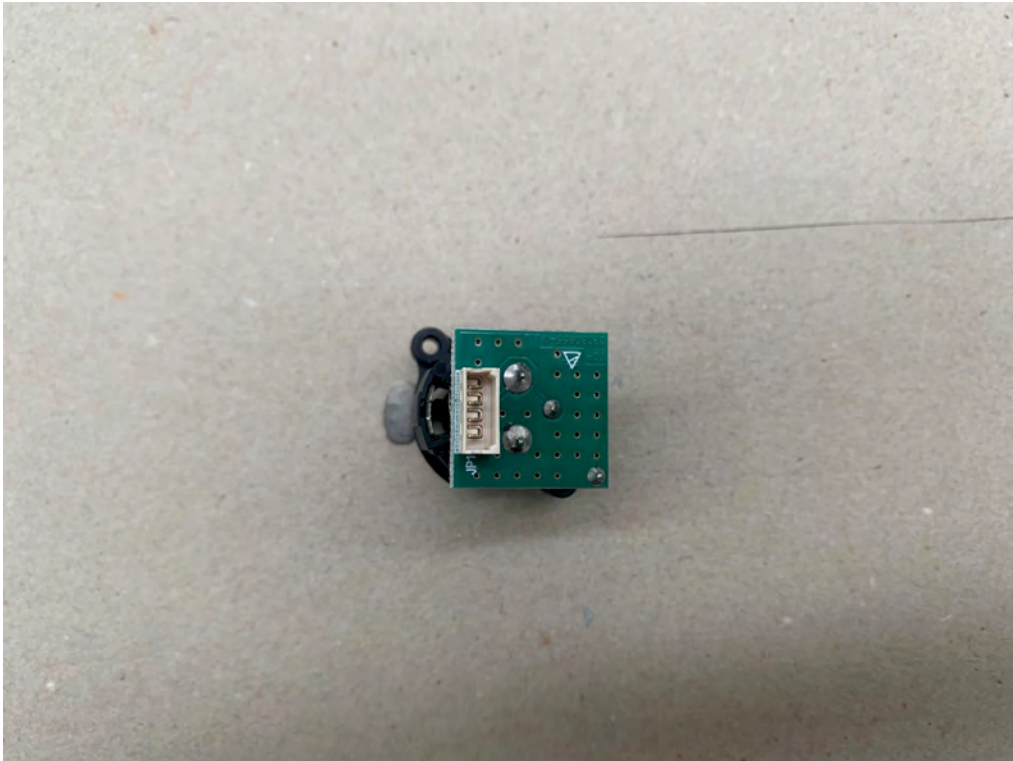
**2U3KYA285-0 CONNECTION TO MPX TOP**



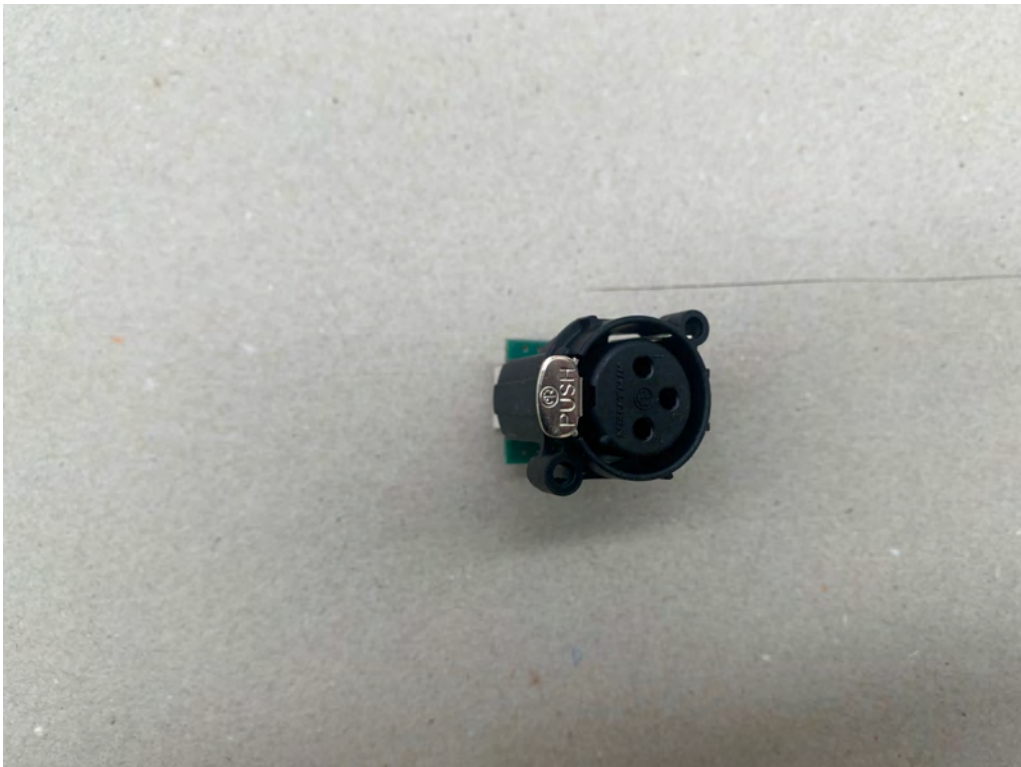
**2U3KYA285-0 CONNECTION TO MPX BOTTOM**



**DRM 5A972-0 XLR ADAPTER TOP**



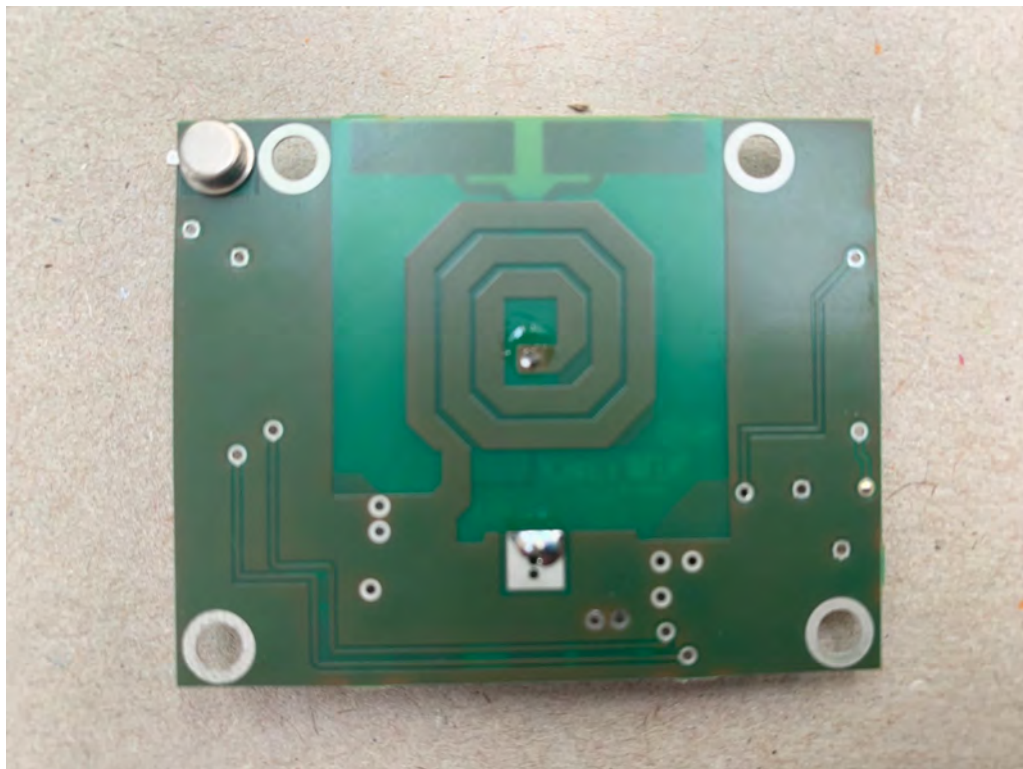
**DRM 5A972-0 XLR ADAPTER BOTTOM**



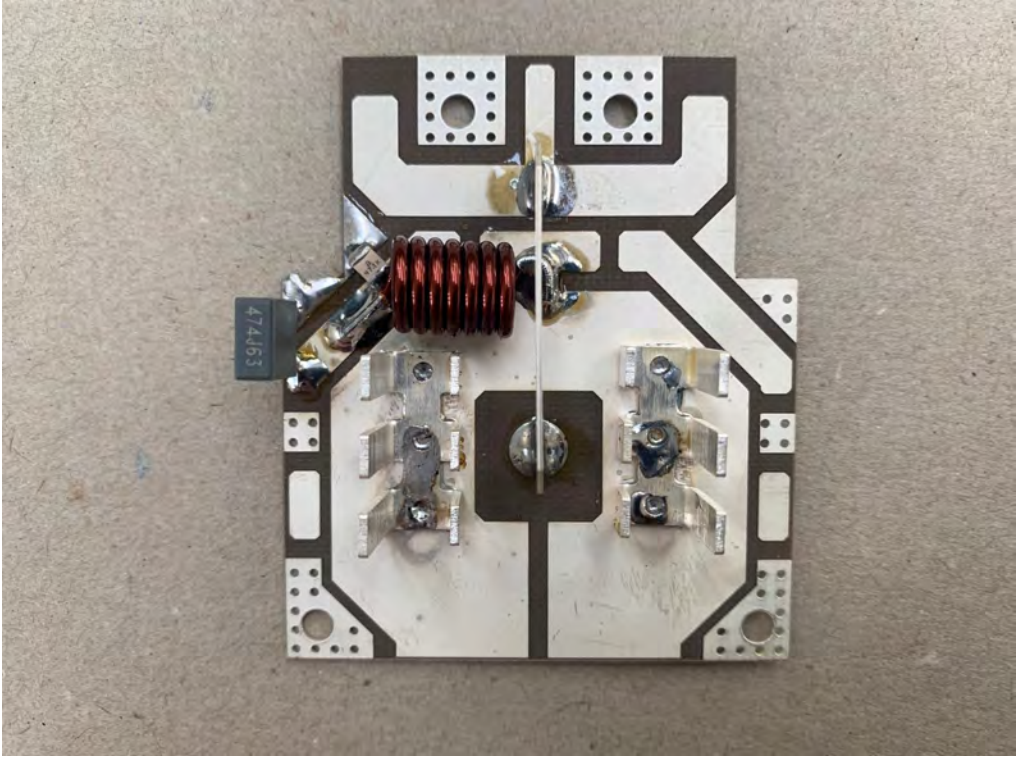
P5780A279-4 INPUT STAGE TOP



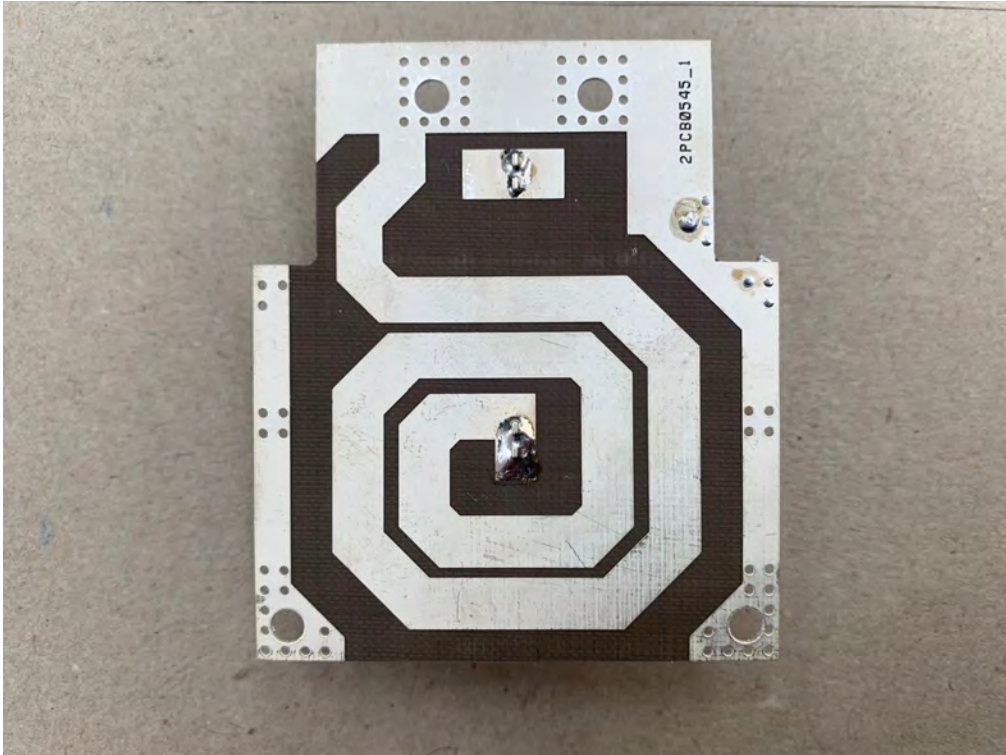
P5780A279-4 INPUT STAGE BOTTOM



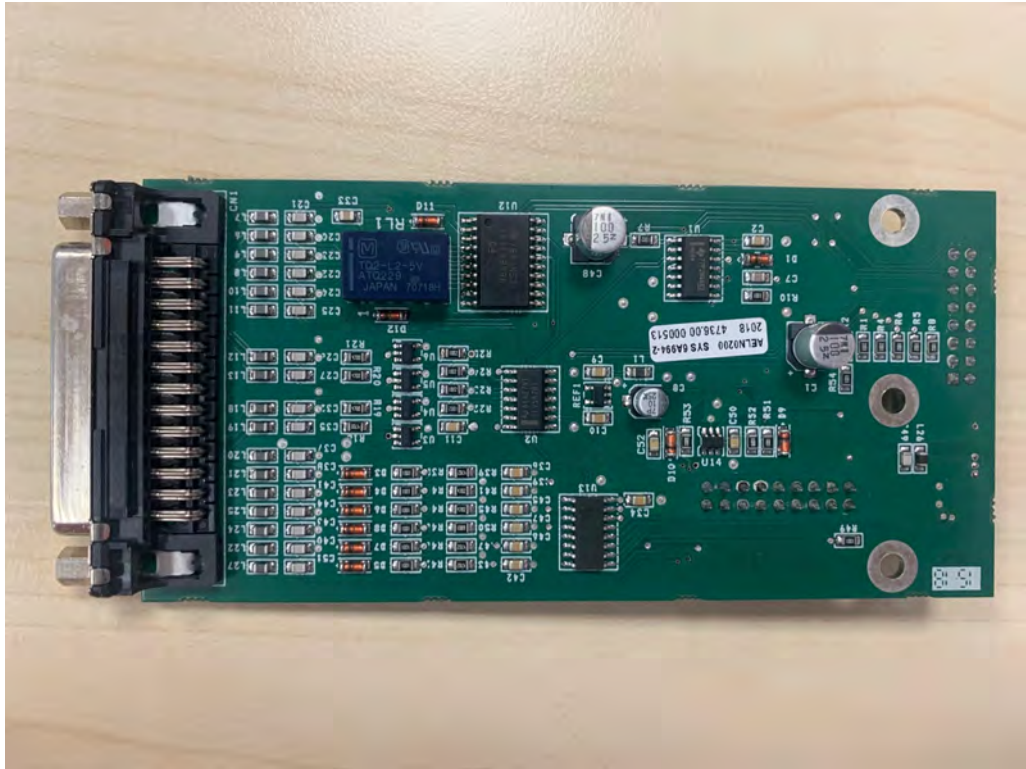
P5781A279-4 OUTPUT STAGE TOP



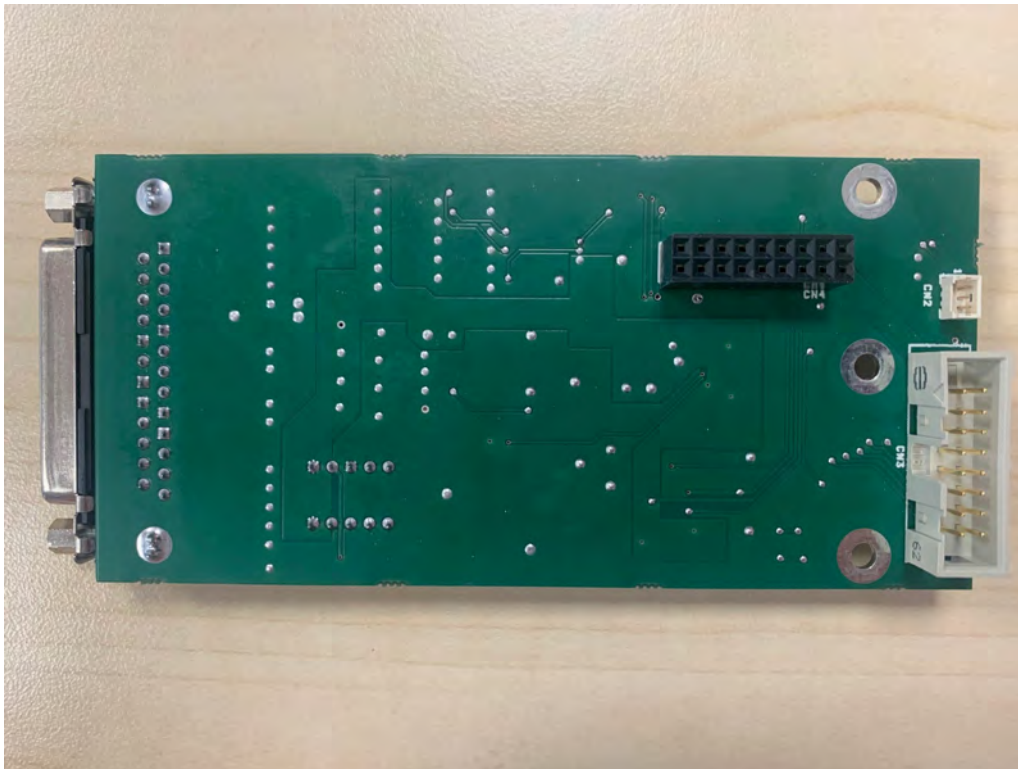
P5781A279-4 OUTPUT STAGE BOTTOM



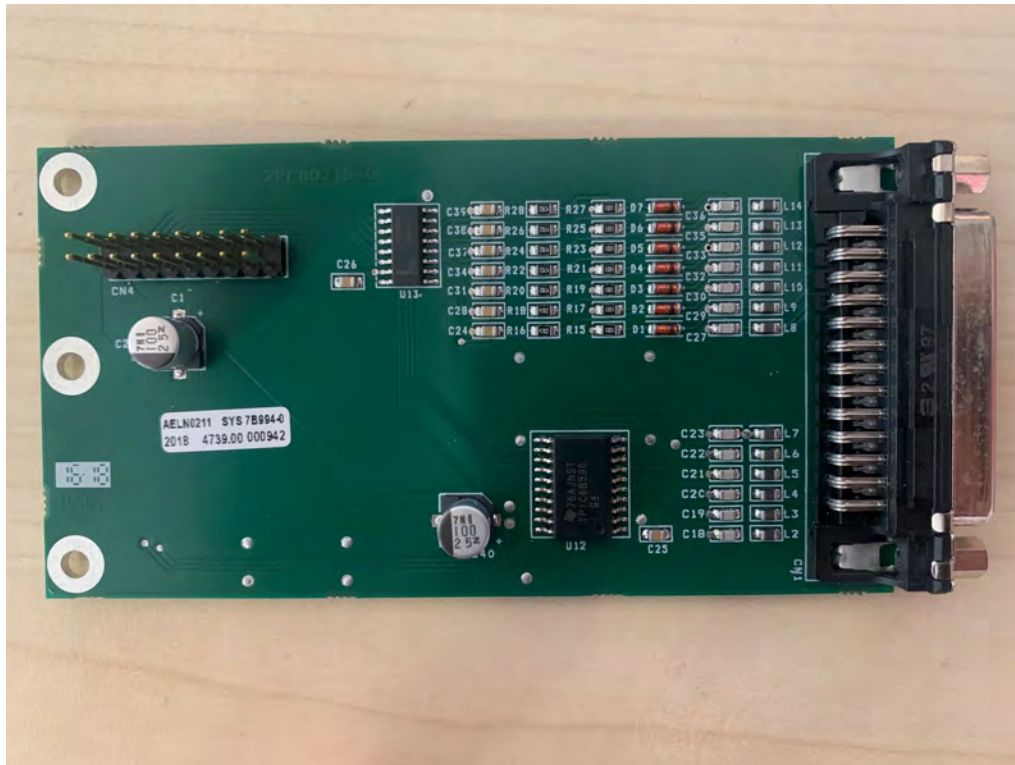
**SYS 6A994-2TC/TS BOARD TOP**



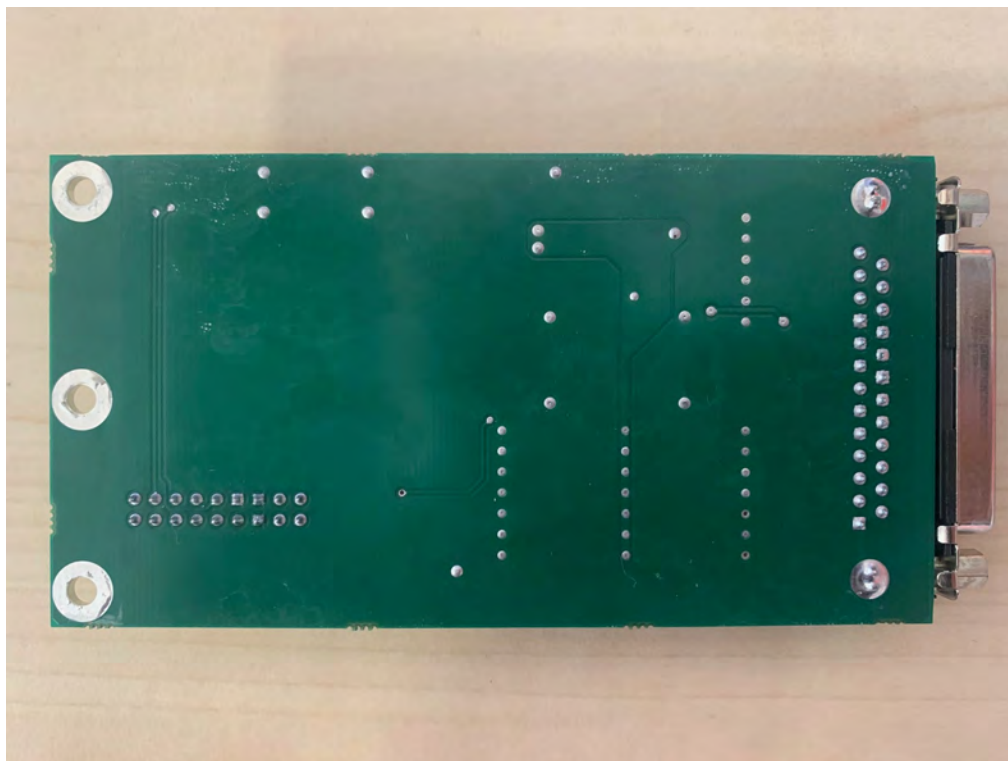
**SYS 6A994-2TC/TS BOARD BOTTOM**



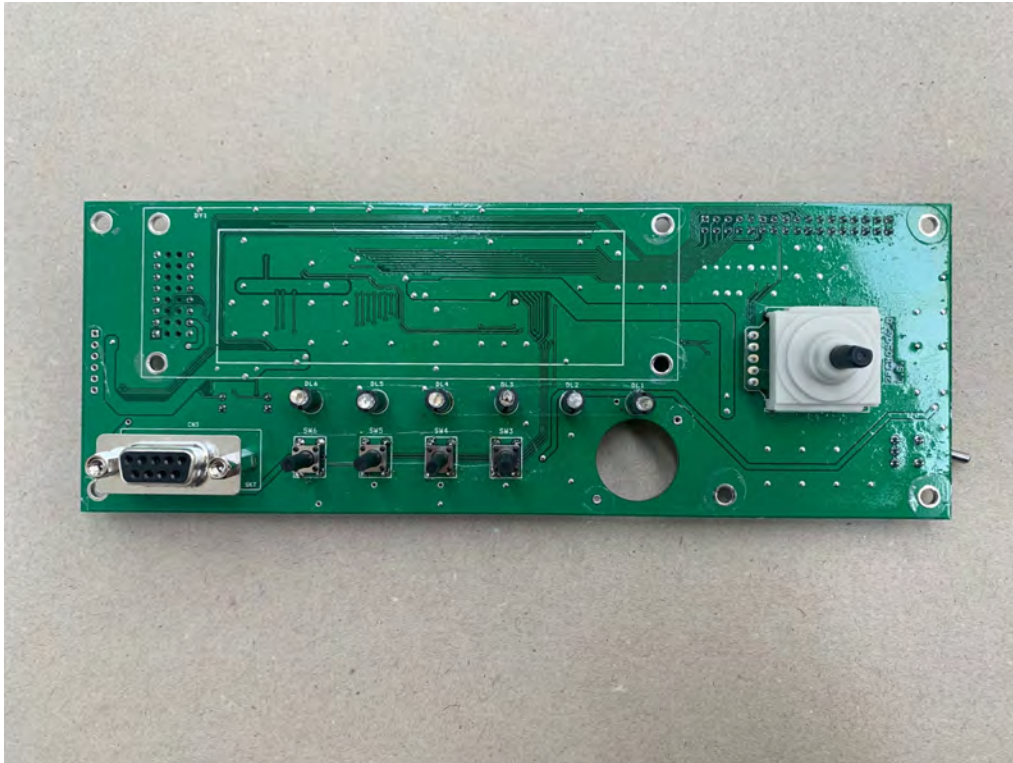
**SYS 7B994-0 PROFILES BOARD TOP**



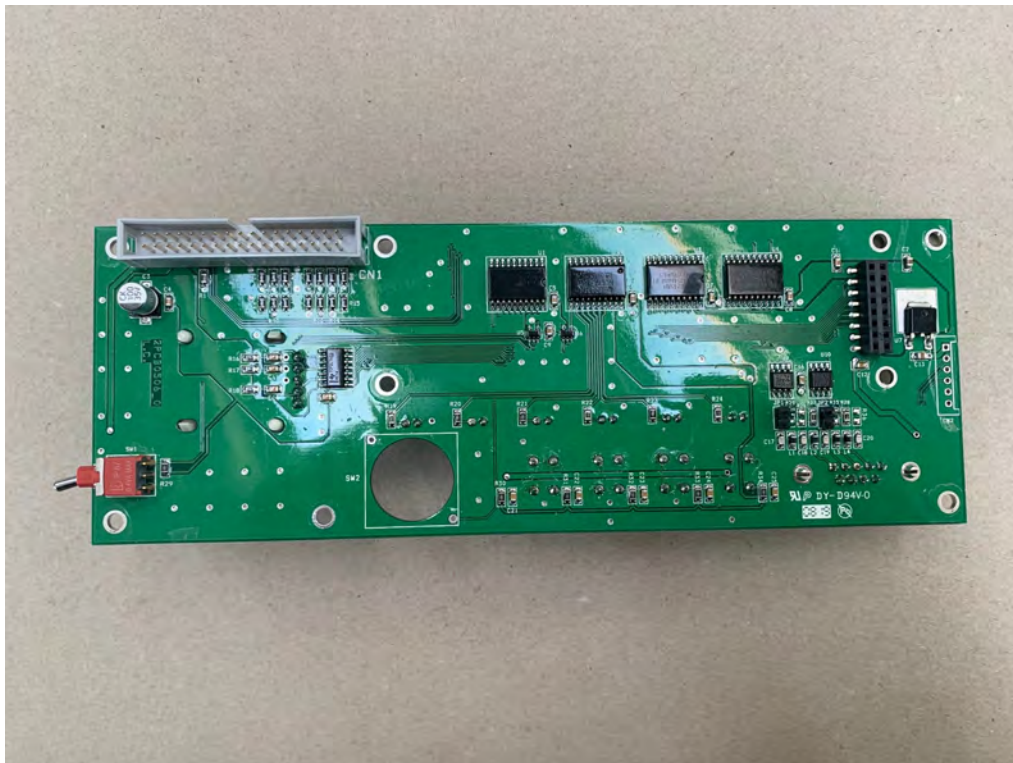
**SYS 7B994-0 PROFILES BOARD BOTTOM**



**TG2U3A899-3 FRONT PANEL BOARD TOP**

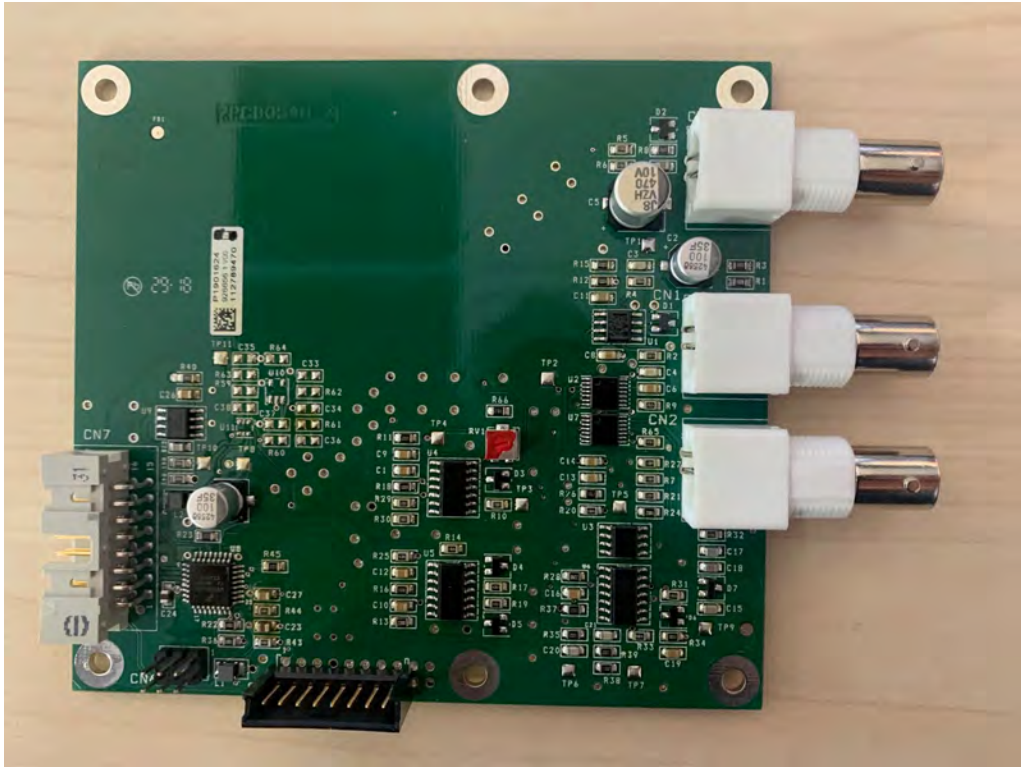


**TG2U3A899-3 FRONT PANEL BOARD TOP BOTTOM**

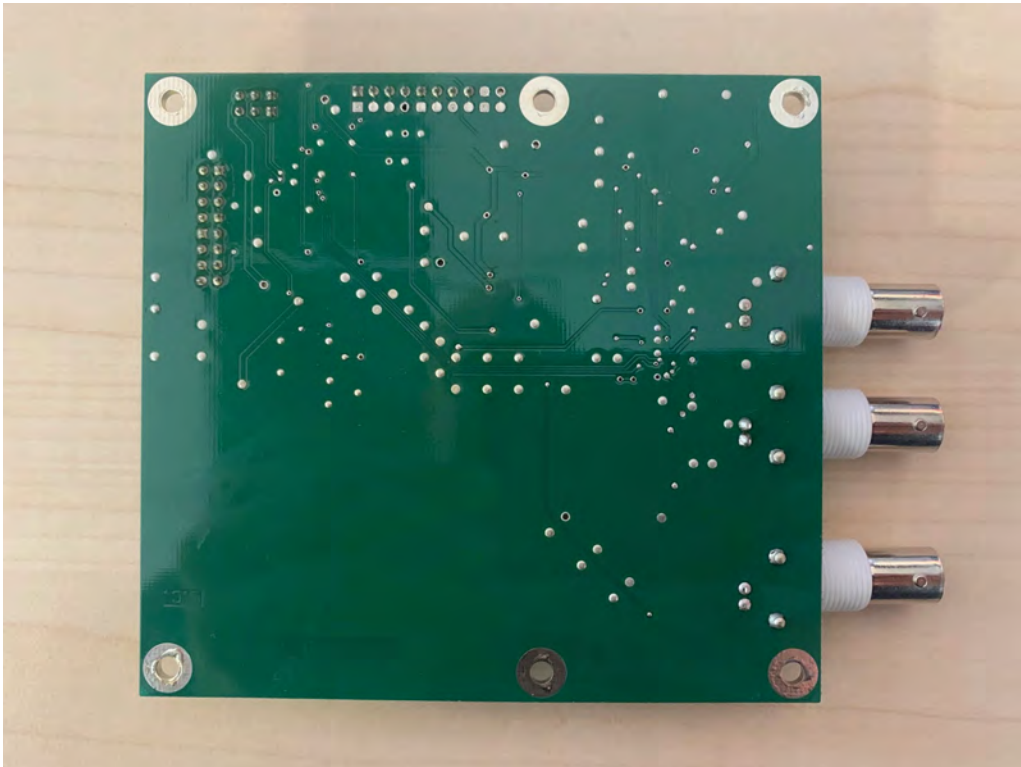




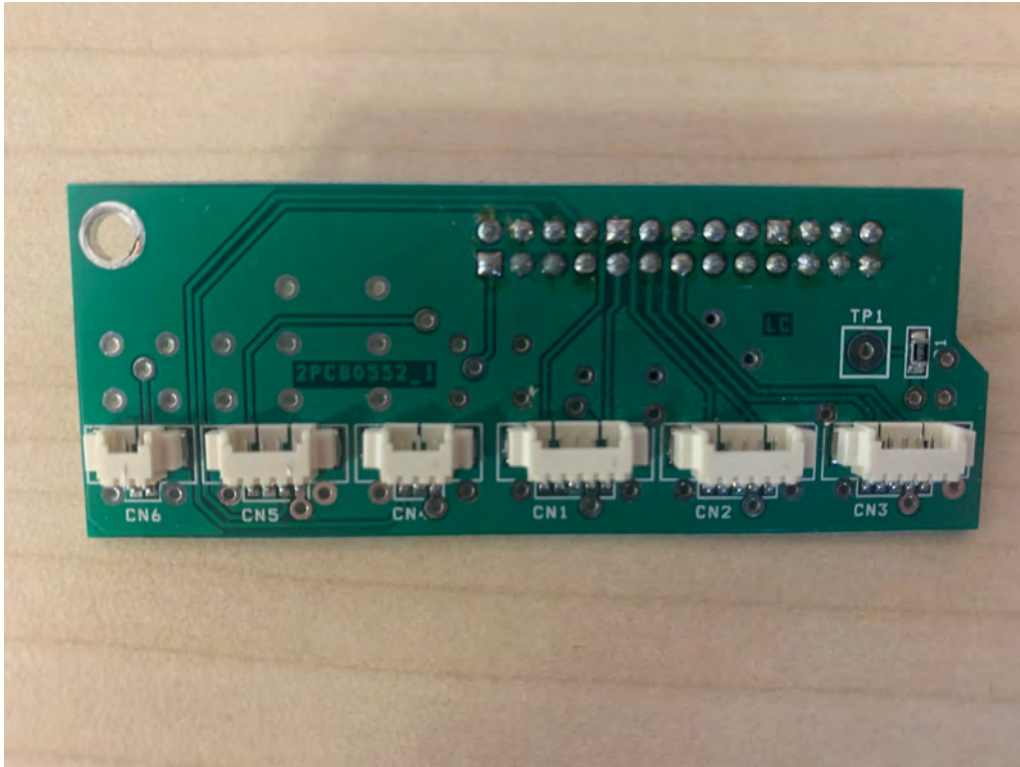
**TG2UGA890-3 MPX BOARD TOP**



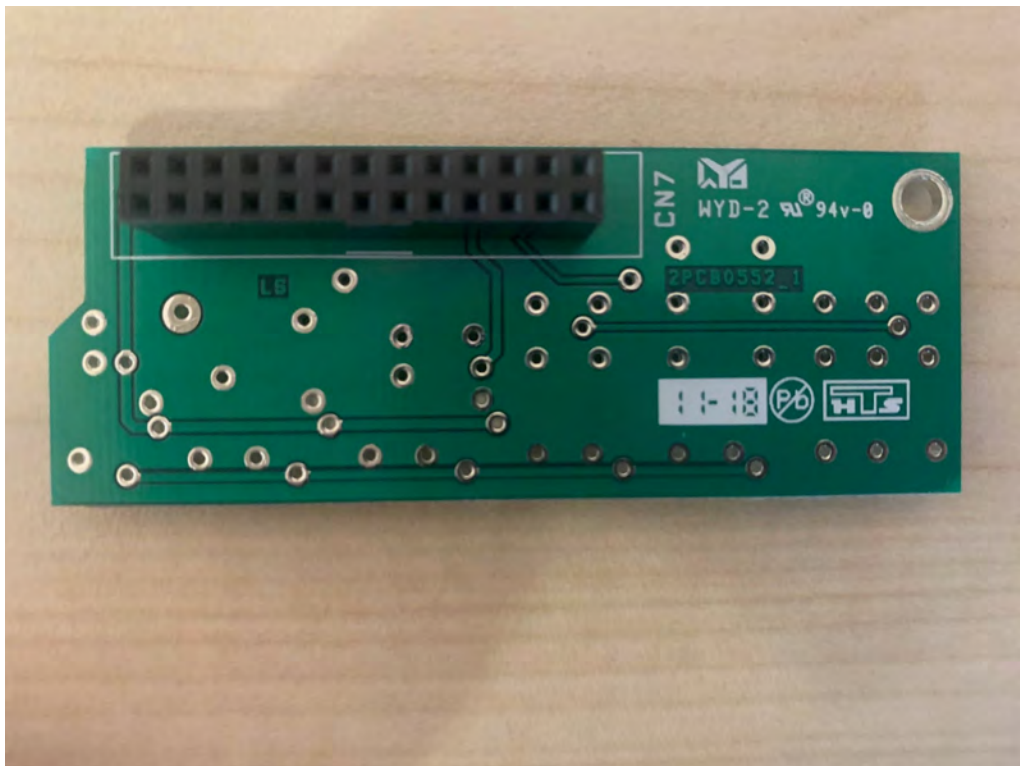
**TG2UGA890-3 MPX BOARD BOTTOM**



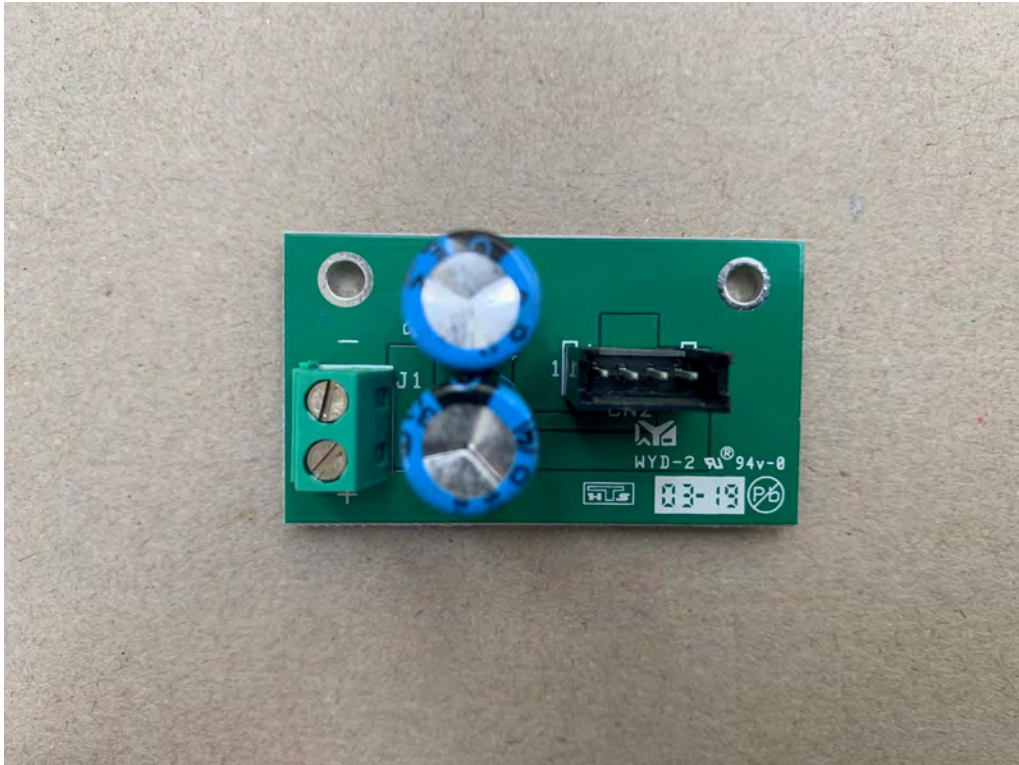
TG2UNA890-1 AUXILIARY CPU TOP



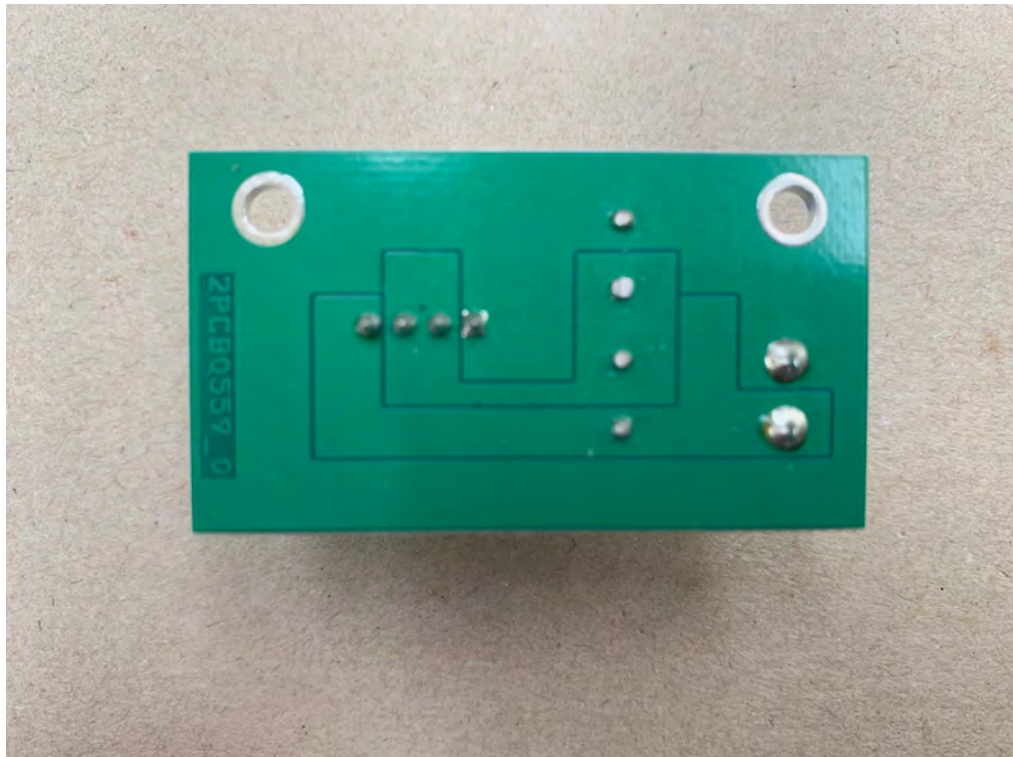
TG2UNA890-1 AUXILIARY CPU BOTTOM



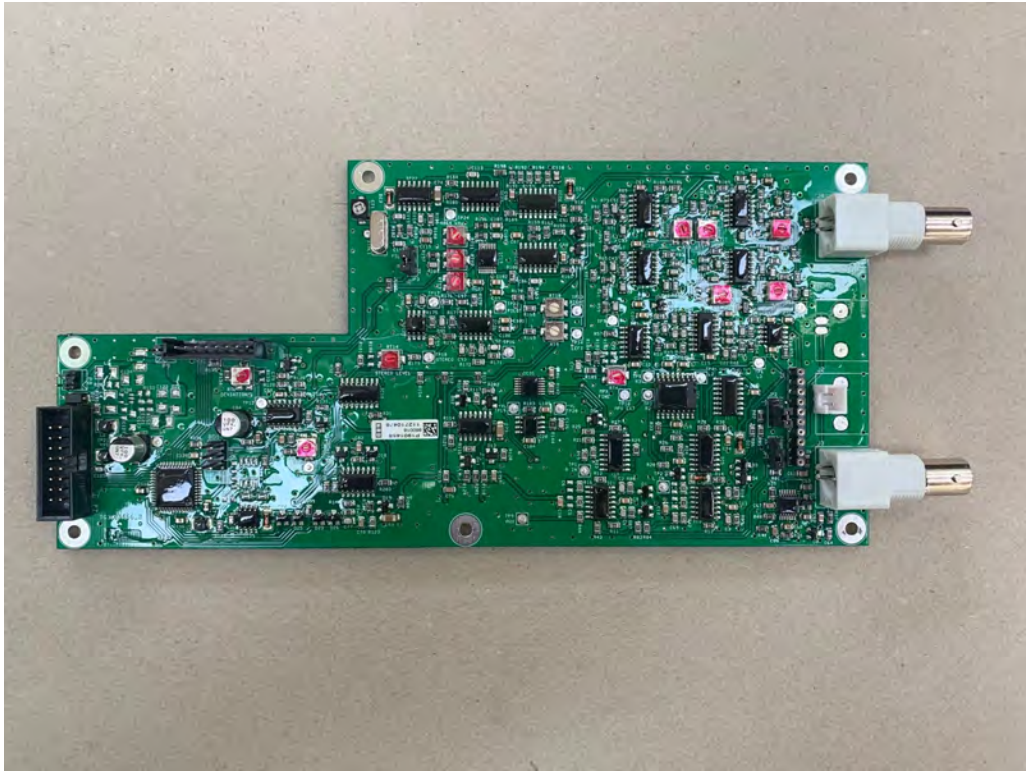
TG2UVA891-0 FAN CONTROL BOARD TOP



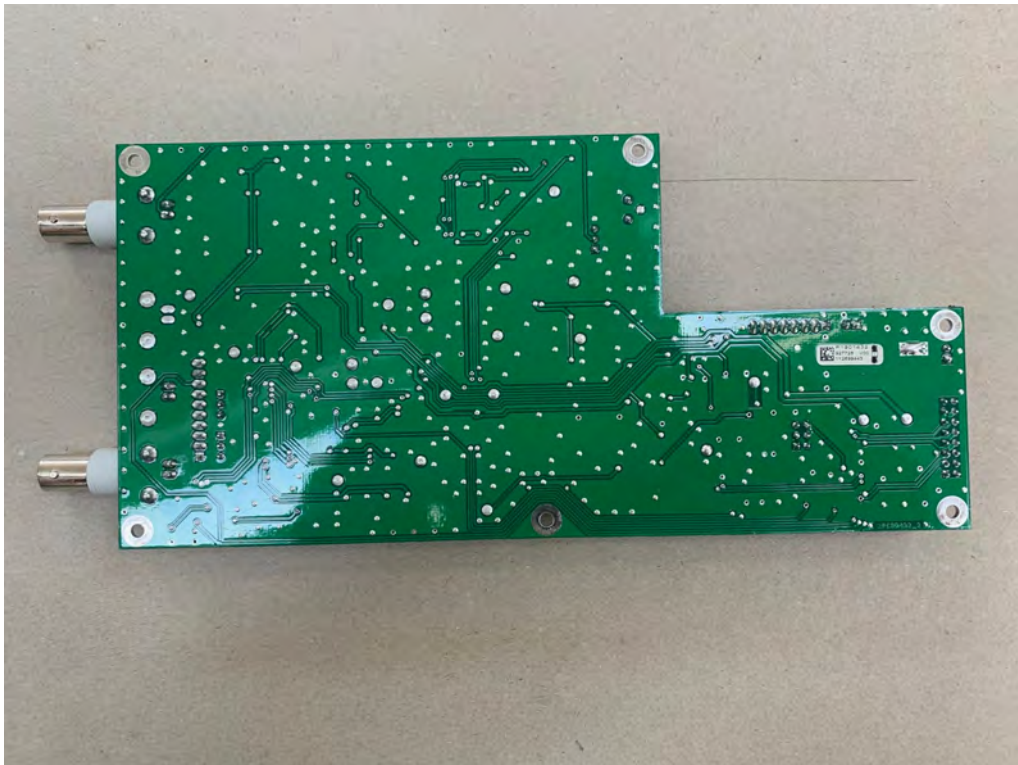
TG2UVA891-0 FAN CONTROL BOARD BOTTOM



**TG3K0C866-2 STEREO CODER TOP**



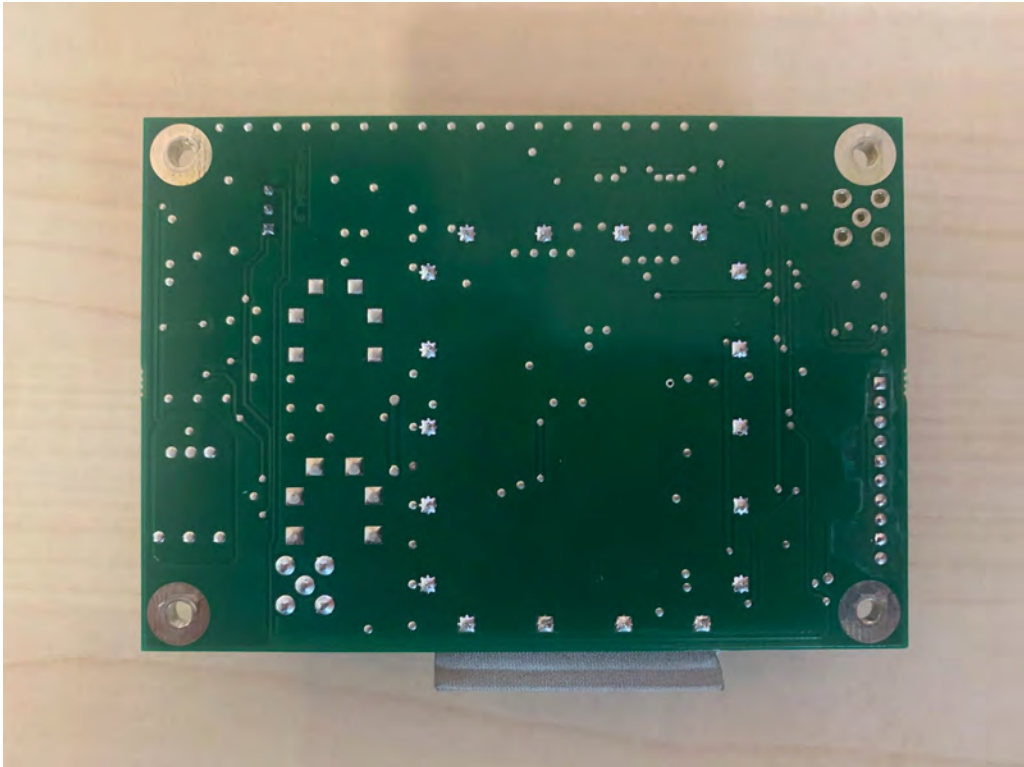
**TG3K0C866-2 STEREO CODER BOTTOM**



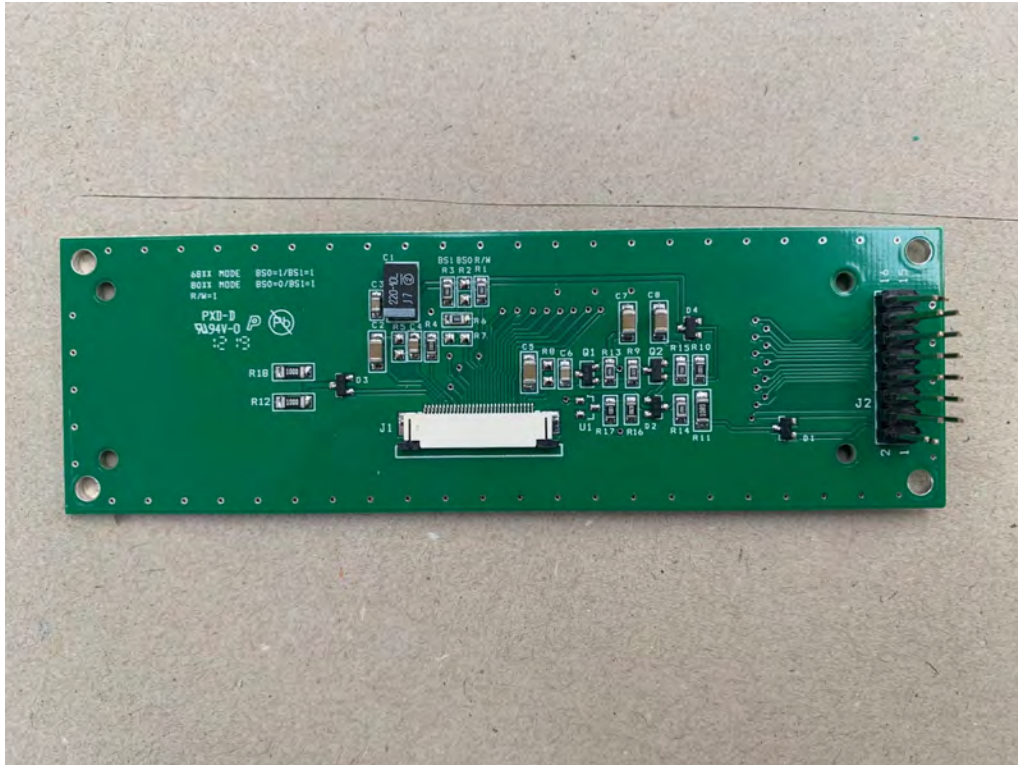
**XNK AB451-2 VCO TOP**



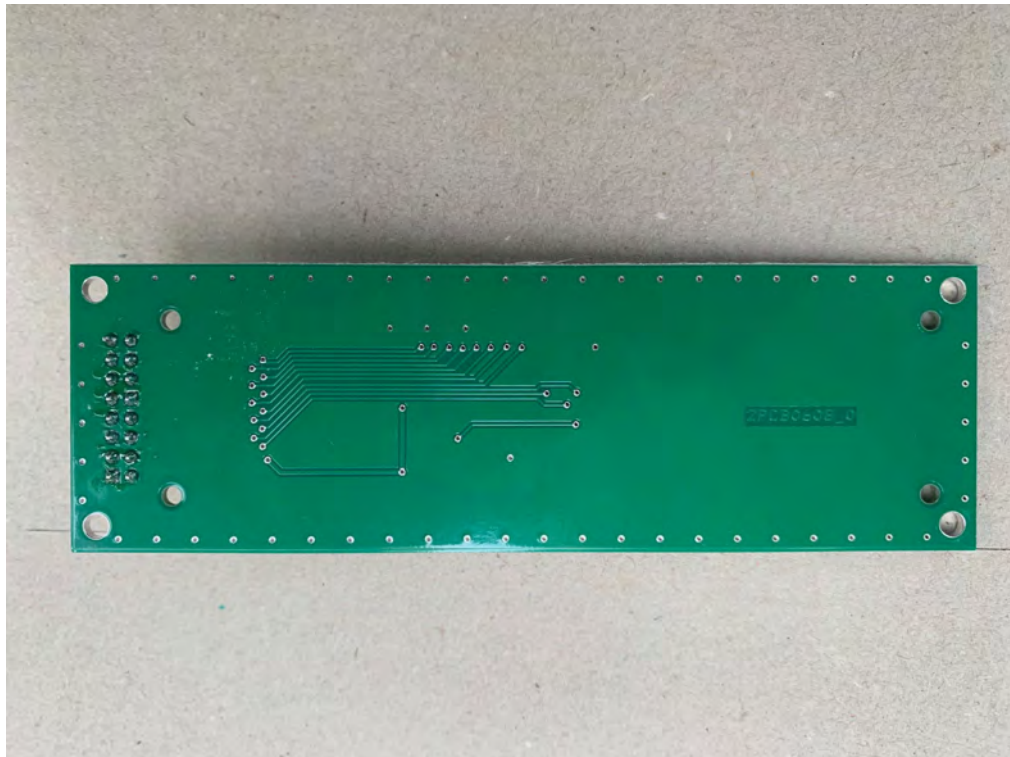
**XNK AB451-2 VCO BOTTOM**



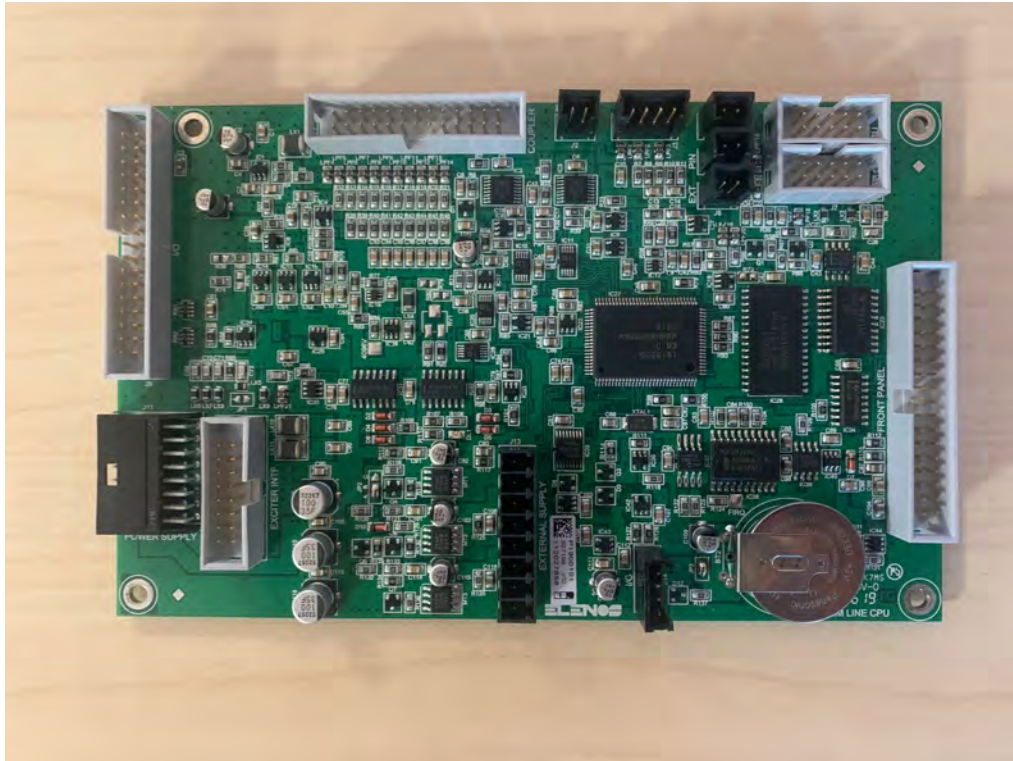
**XNK BA452-0 OLED ADAPTER TOP**



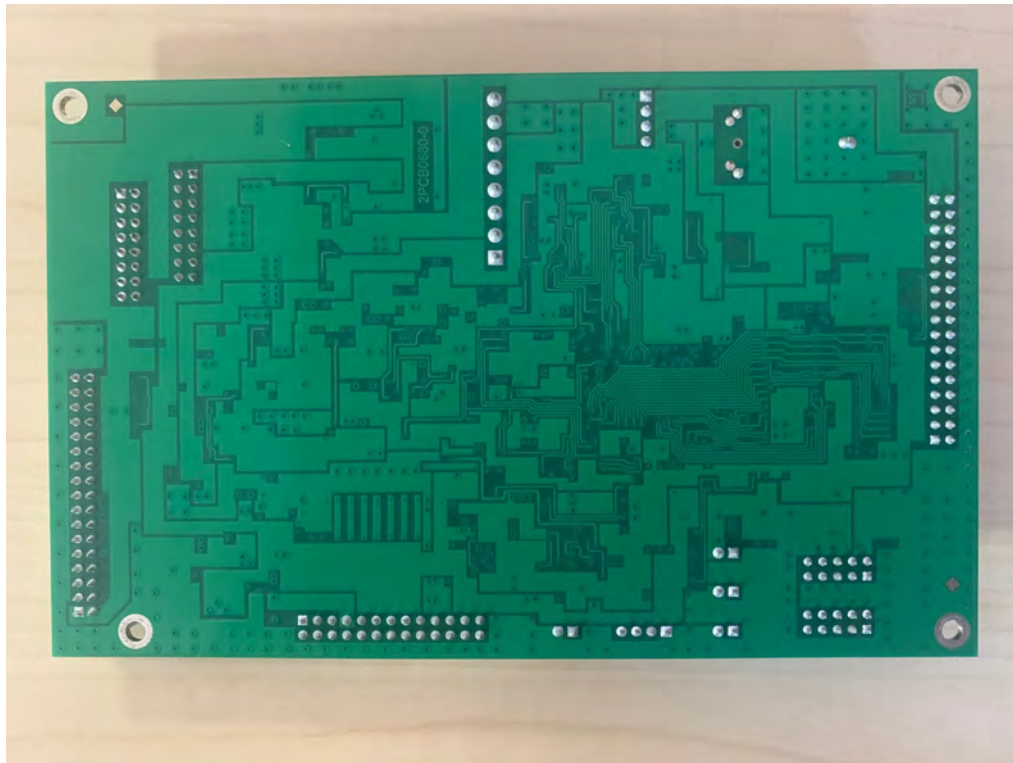
**XNK AXNK BA452-0 OLED ADAPTER BOTTOM**



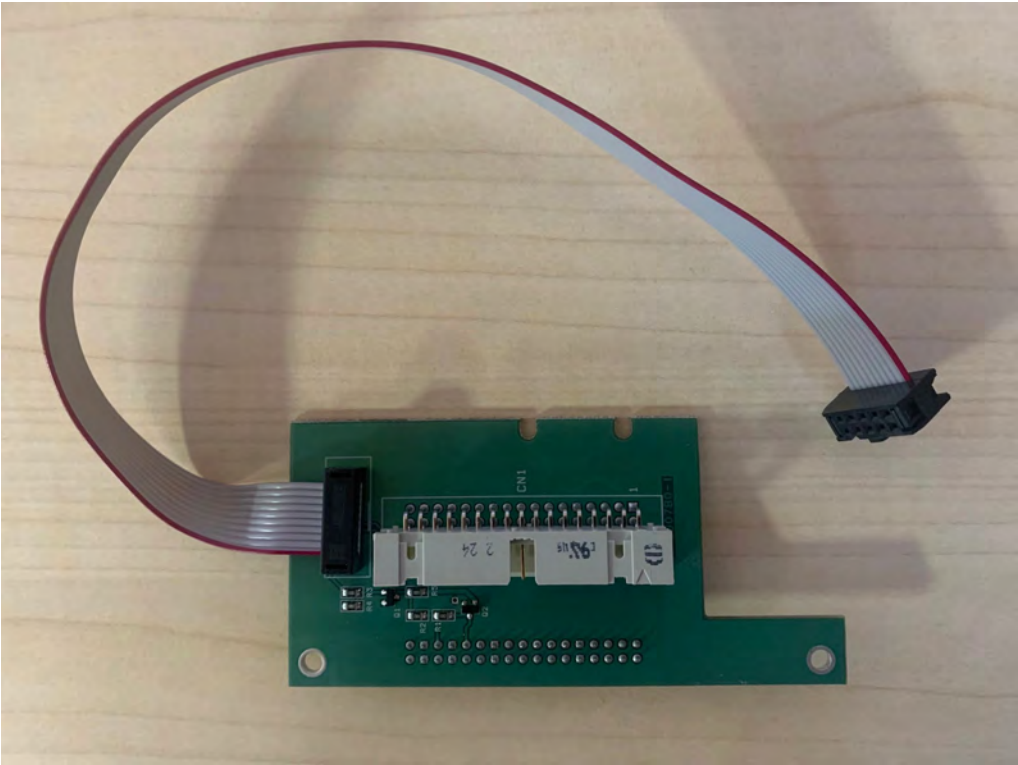
**XNK EA453-0 CPU TOP**



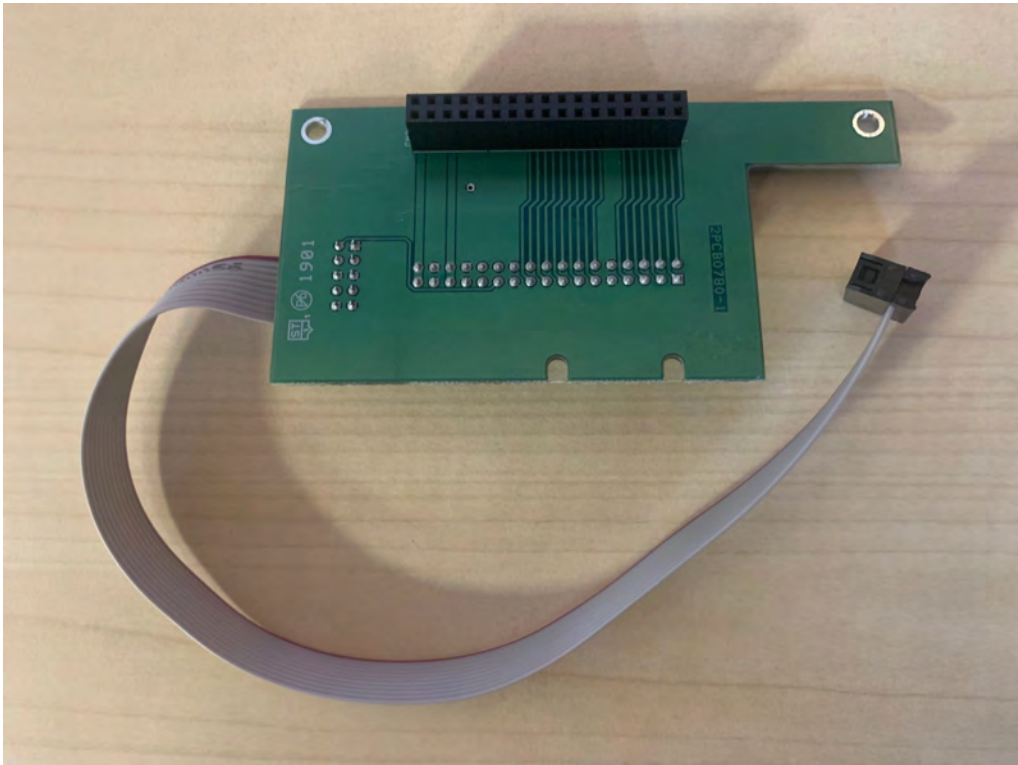
**XNK EA453-0 CPU BOTTOM**



**XNK PA456-1 PGM AND SERIAL TOP**



**XNK PA456-1 PGM AND SERIAL BOTTOM**

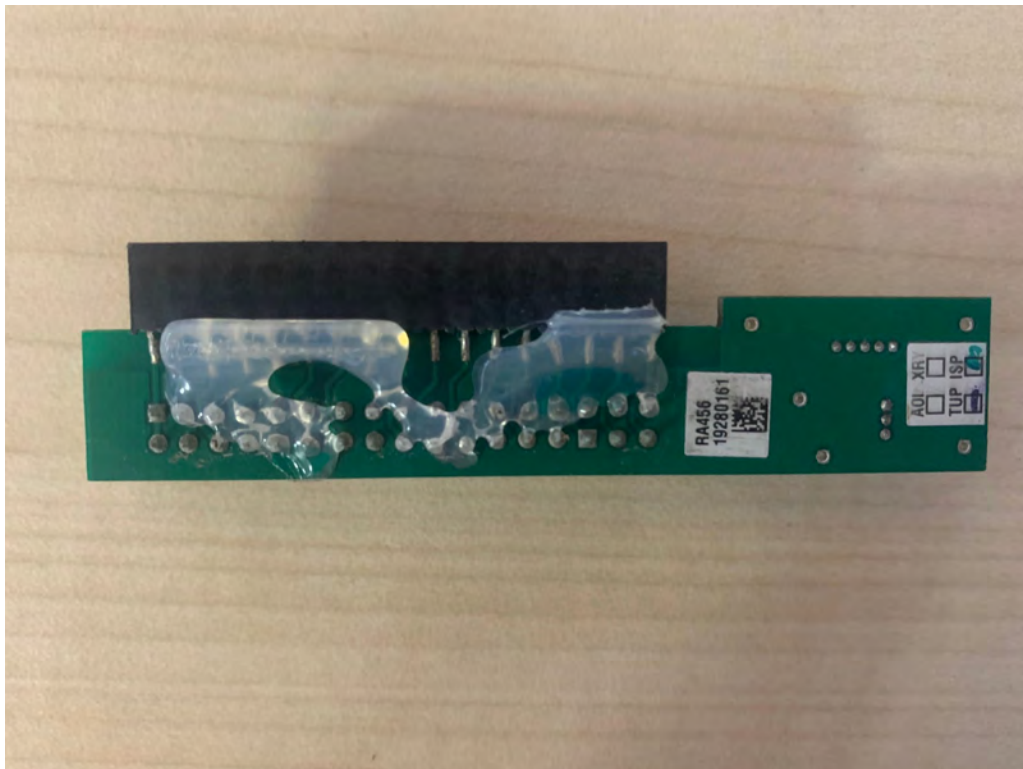




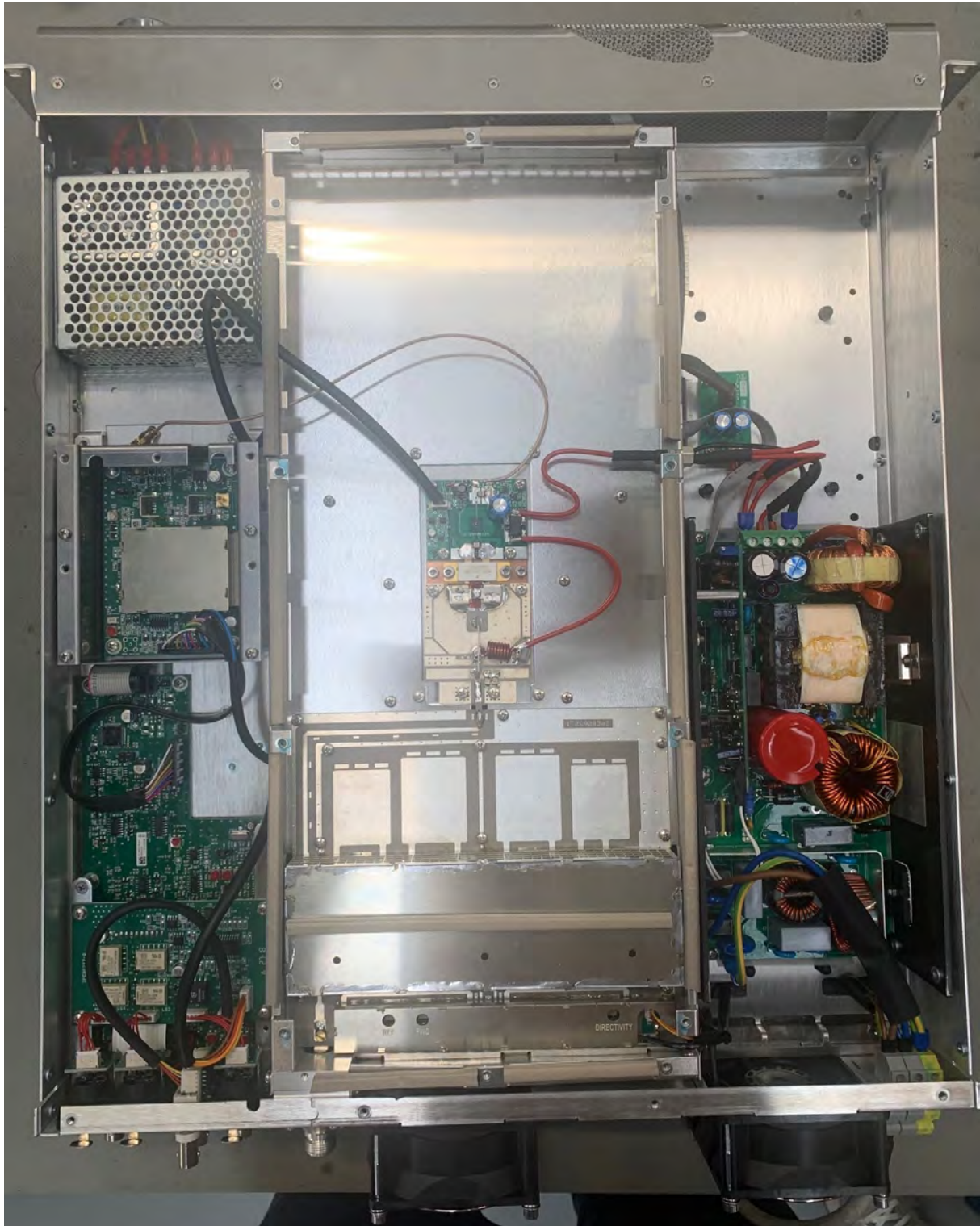
**XNK RA456-1 INTERLOCK INVERTER TOP**



**XNK RA456-1 INTERLOCK INVERTER BOTTOM**



ETG500 TOP VIEW

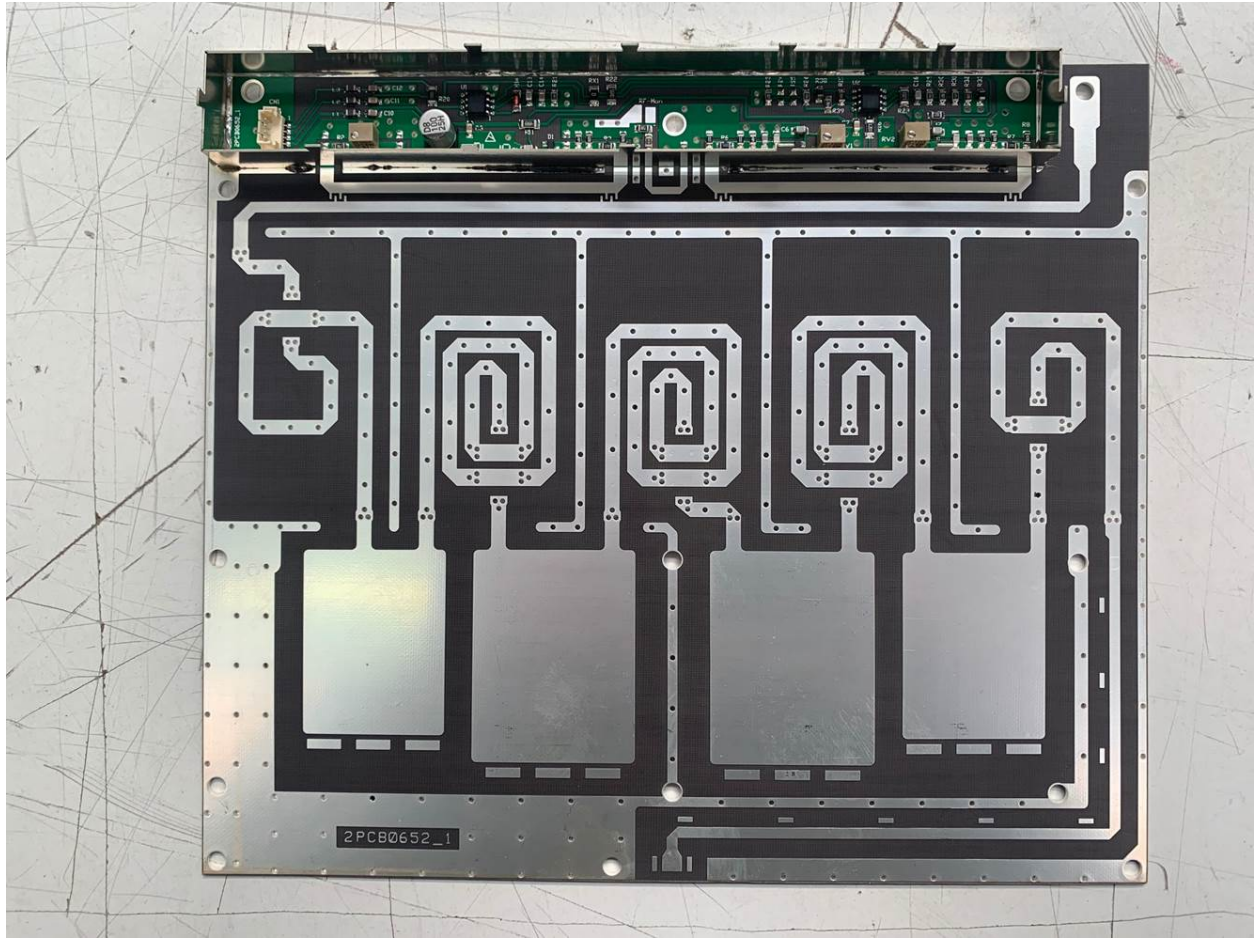


ETG500 BOTTOM VIEW





VCO TOP – SHIELD REMOVED



LPF FILTER – TOP VIEW – SHIELD REMOVED