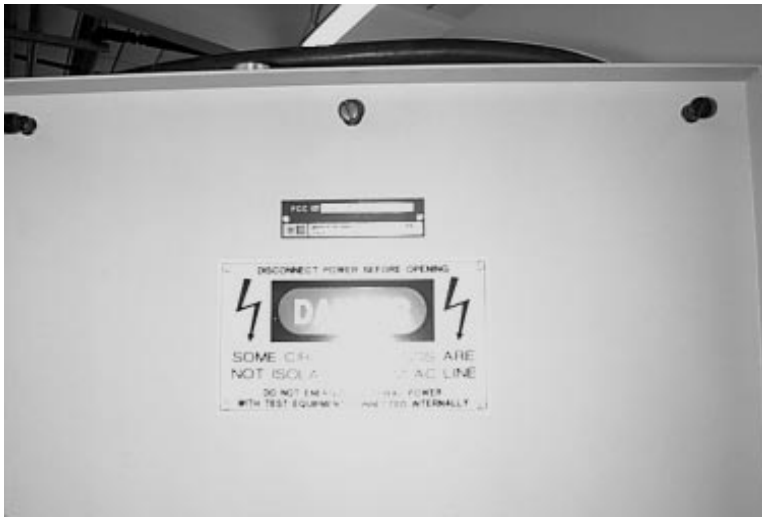


Exhibit 6 Photographs

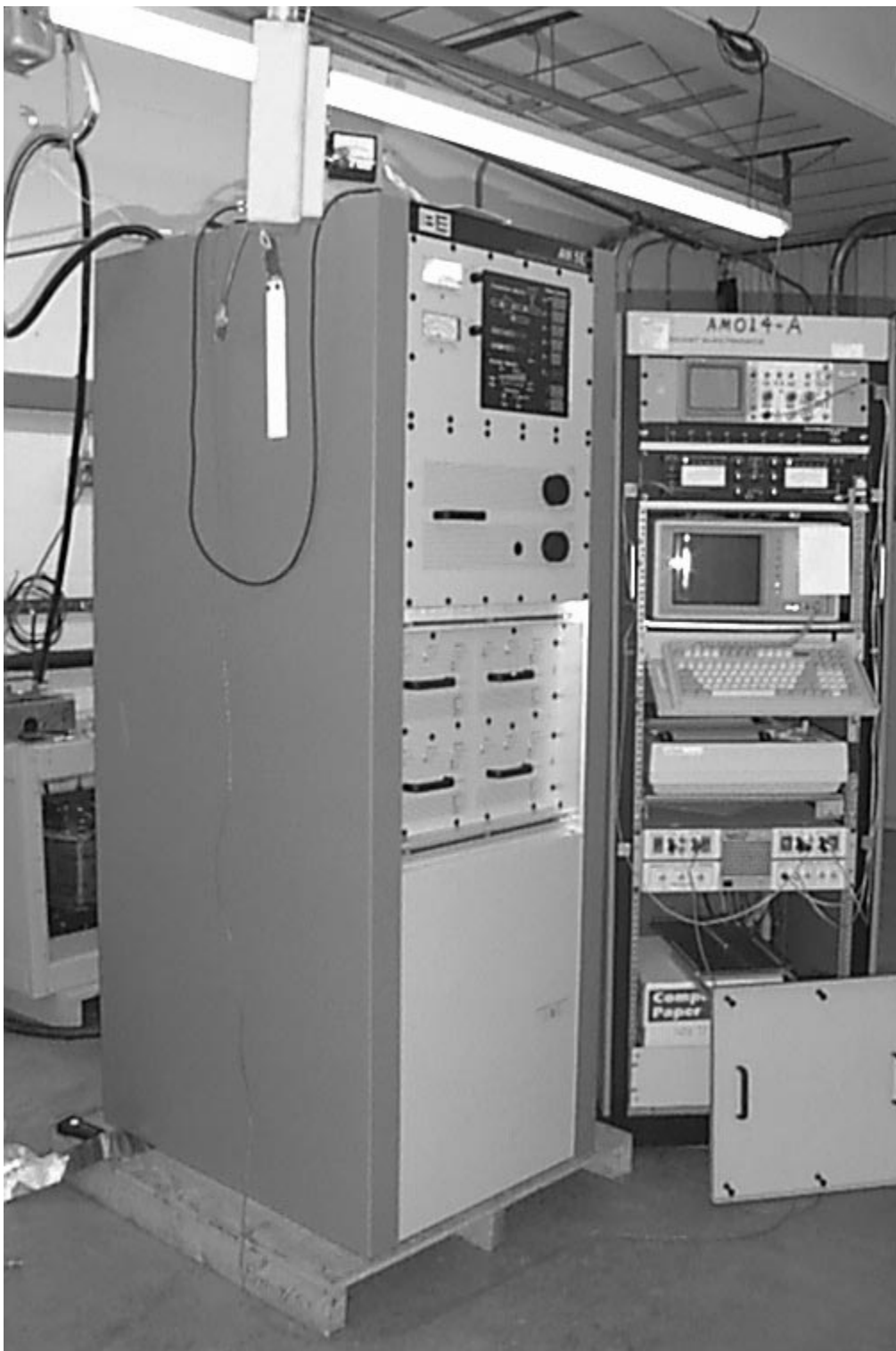
2.1033 (b) (7) A sufficient number of photographs to clearly show the exterior appearance, the construction, the component placement on the chassis, and the chassis assembly. The exterior views shall show the overall appearance, the antenna used with the device (if any), the controls available to the user, and the required identification label in sufficient detail so that the name and FCC identifier can be read. In lieu of a photograph of the label, a sample label (or facsimile thereof) may be submitted together with a sketch showing where this label will be placed on the equipment. Photographs shall be 8 by 10 inches in of size A4 (21 cm x 29.7 cm) or 8 x 10 inches (20.3 cm x 25.4 cm). Smaller photographs may be submitted provided they are sharp and clear, show the necessary detail, and are mounted on paper between 8 by 10-1/2 inches and 8-1/2 by 11 inches in size A4 (21 cm x 29.7 cm) or 8.5 x 11 inch (21.6 cm x 27.9 cm) paper. A sample label or facsimile together with the sketch showing the placement of this label shall be on the same size paper.

Broadcast Electronics Response

Photographs clearly showing the exterior appearance and construction are given below.



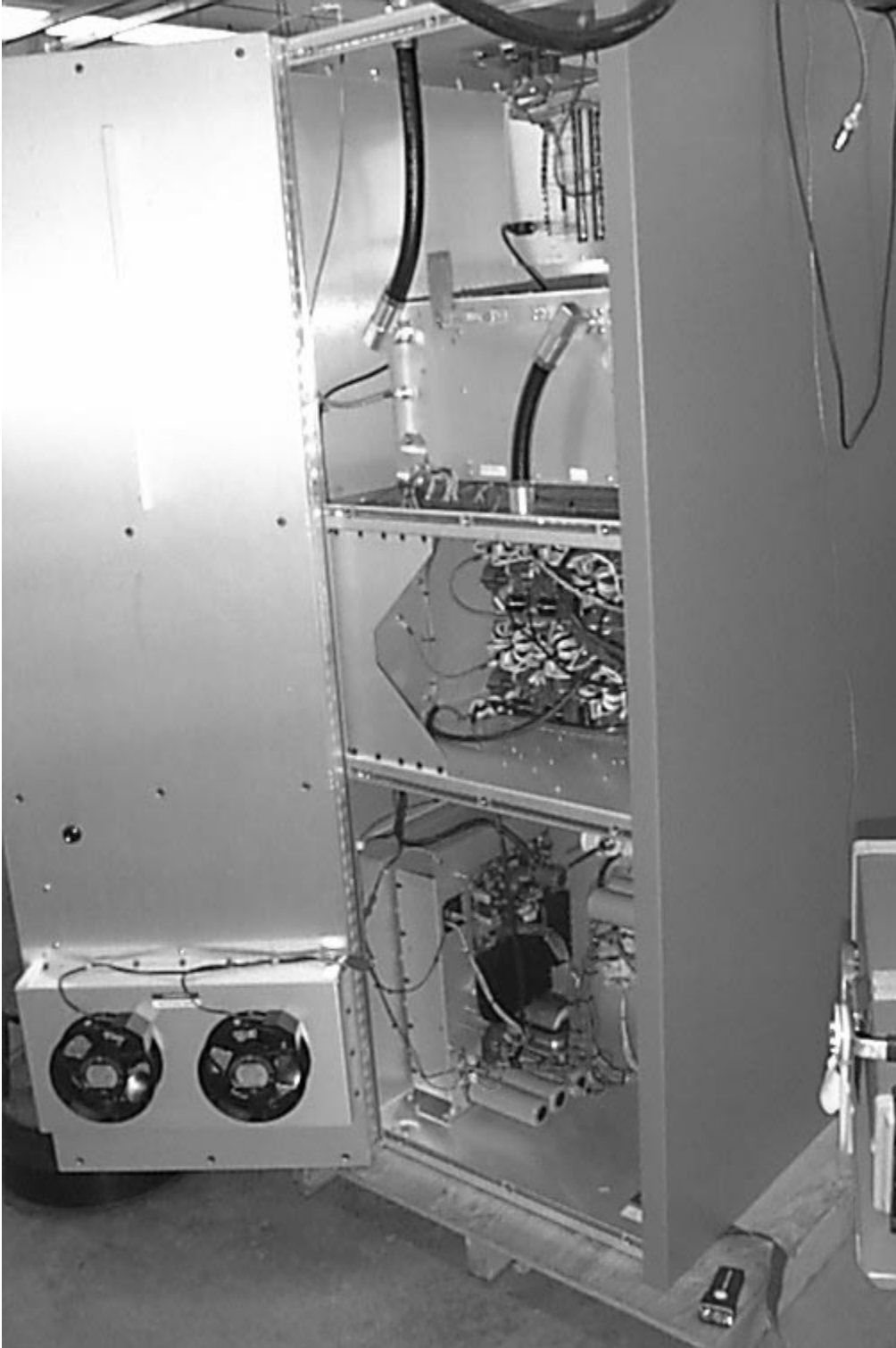
Rear Door Showing FCC Identifier



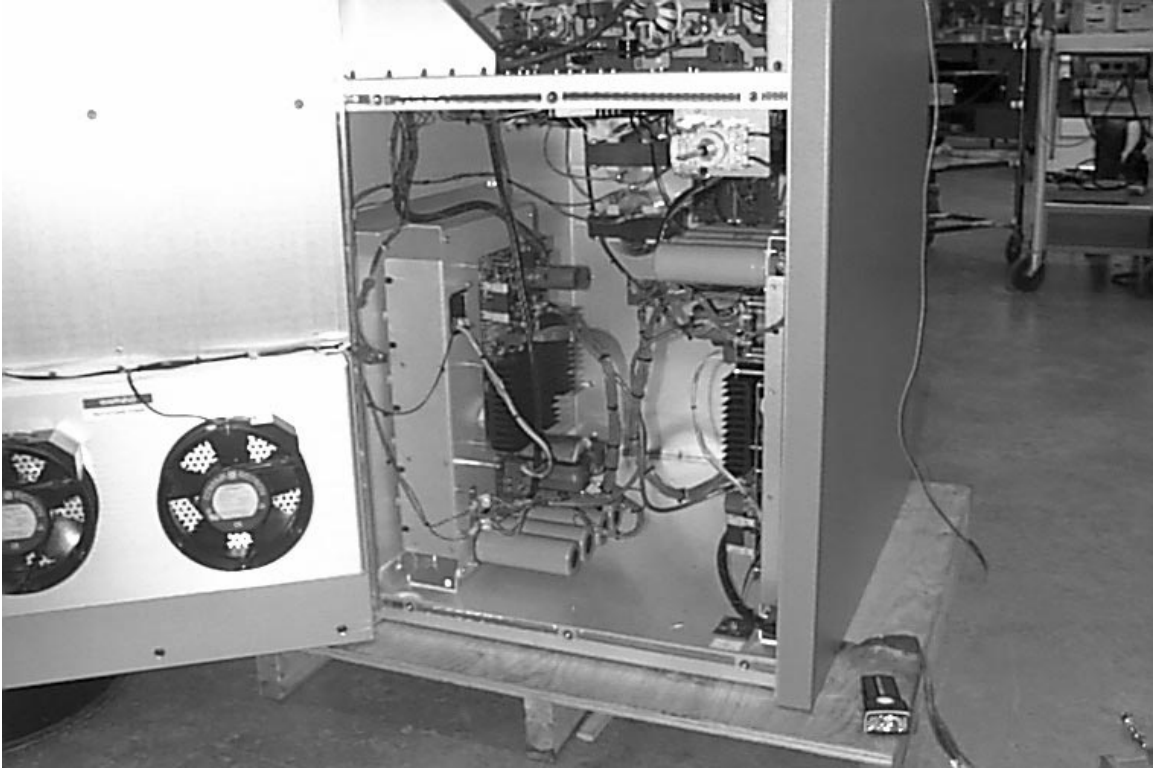
Front/Left



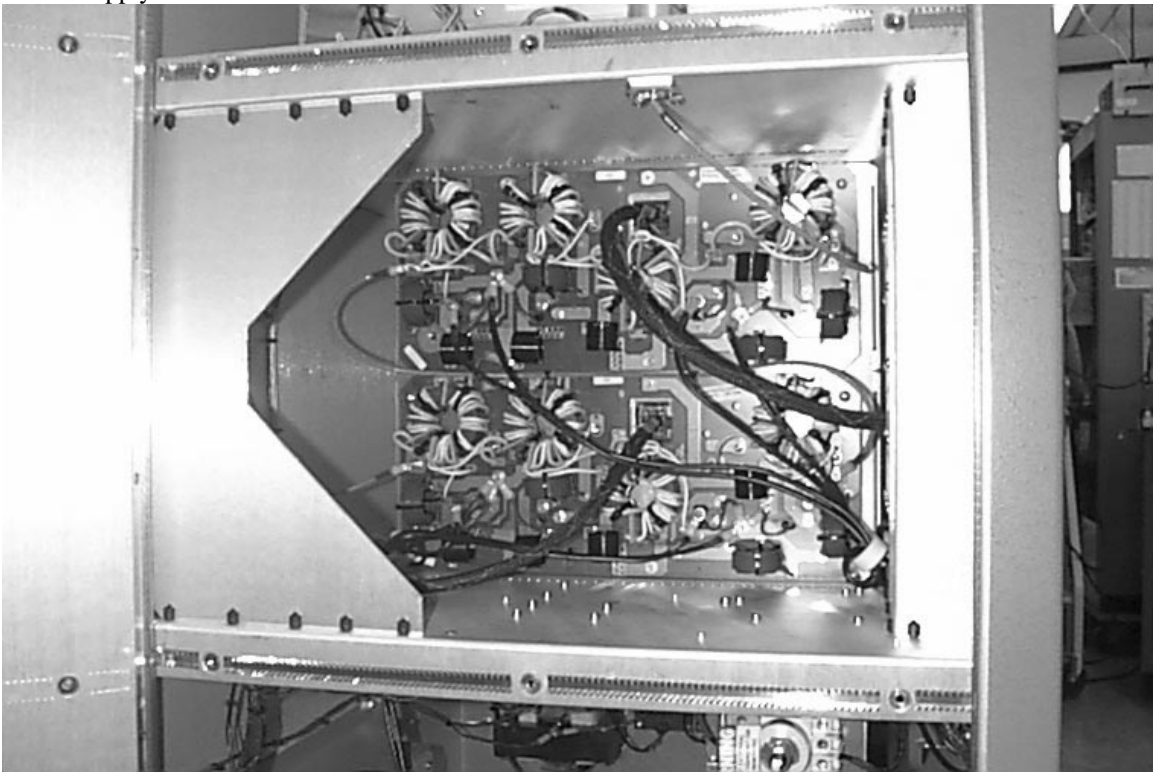
Rear



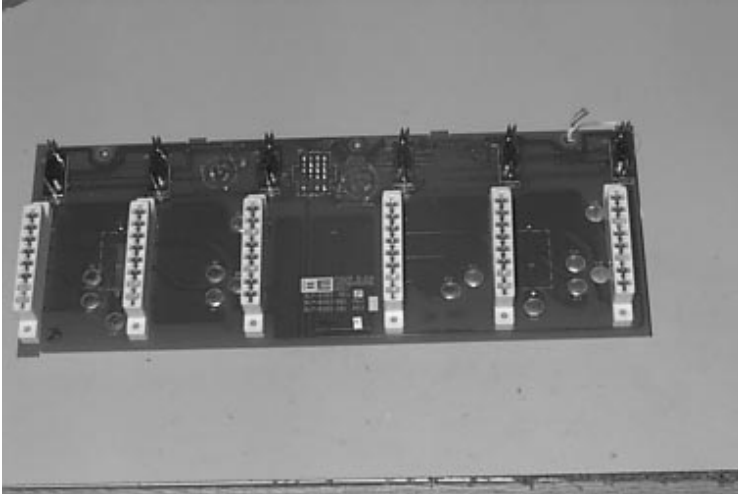
Rear Door Open



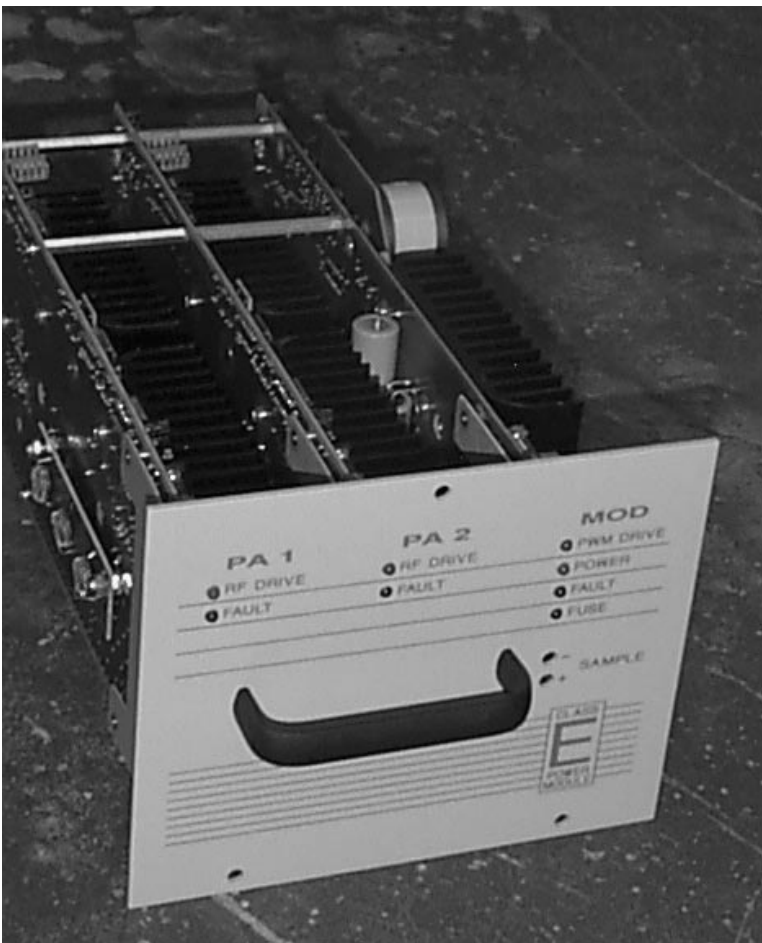
Power Supply/AC Distribution Section



Combiner



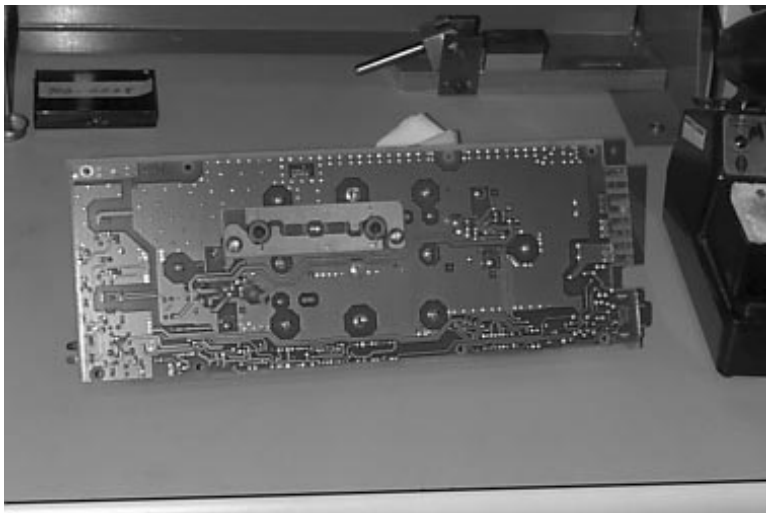
Power Block Mother PCB



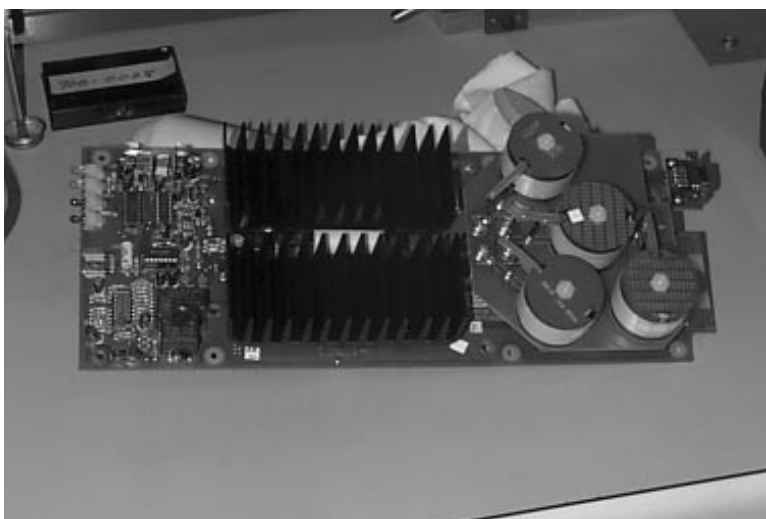
Module



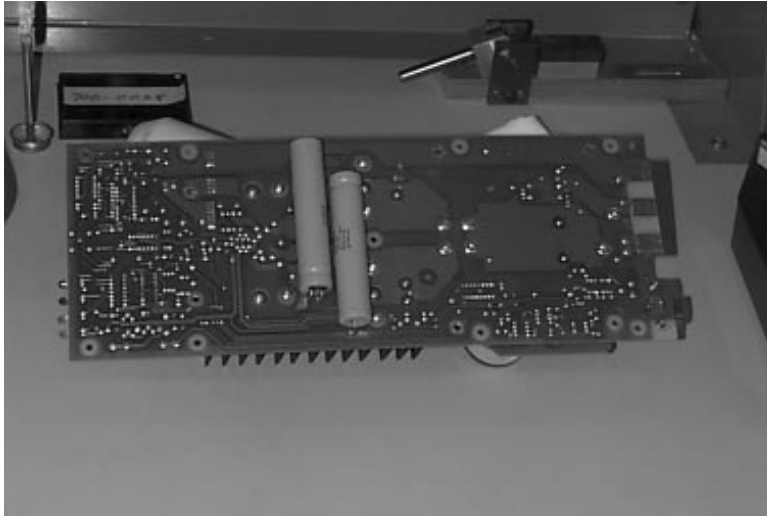
Power Amplifier Top View



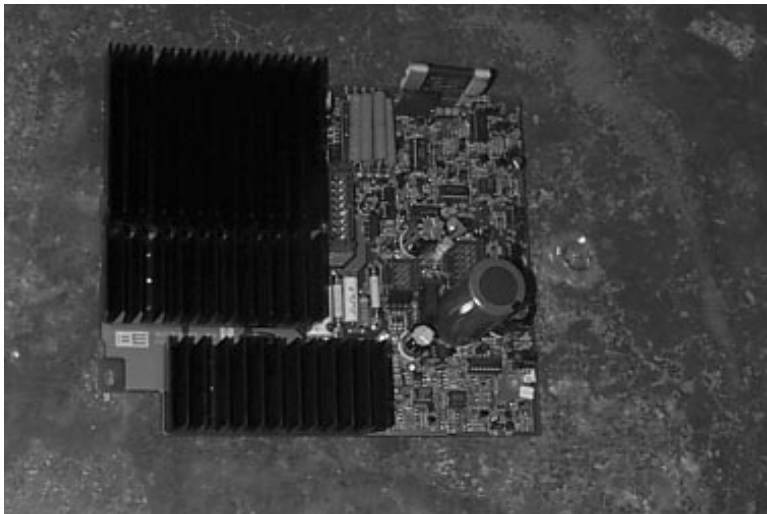
RF Amplifier PCB Bottom View



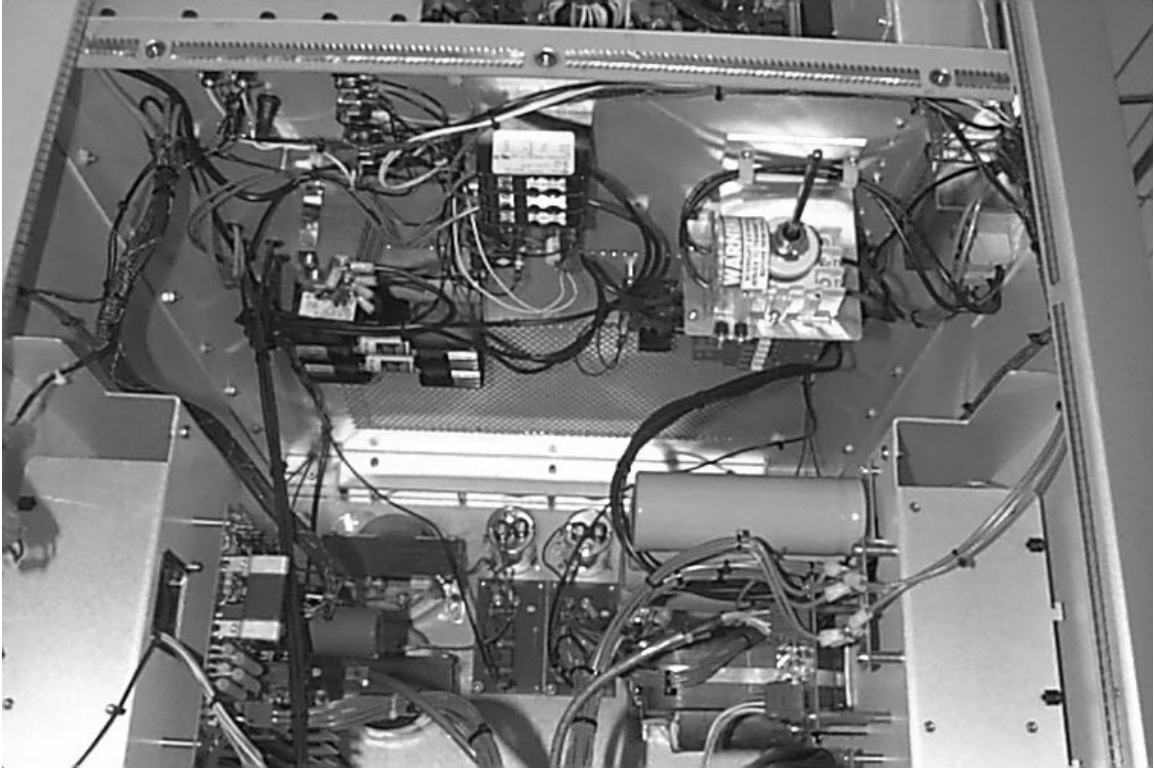
Modulator PCB Top



Modulator PCB Back



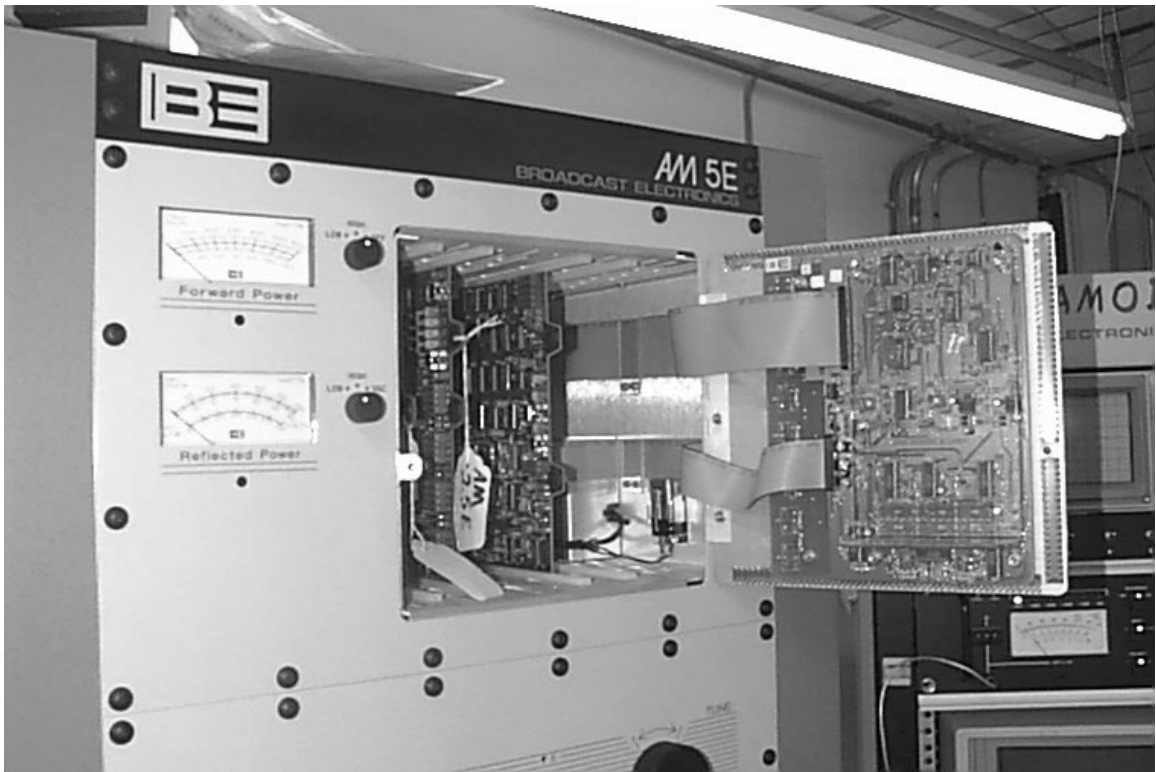
Power Supply PCB



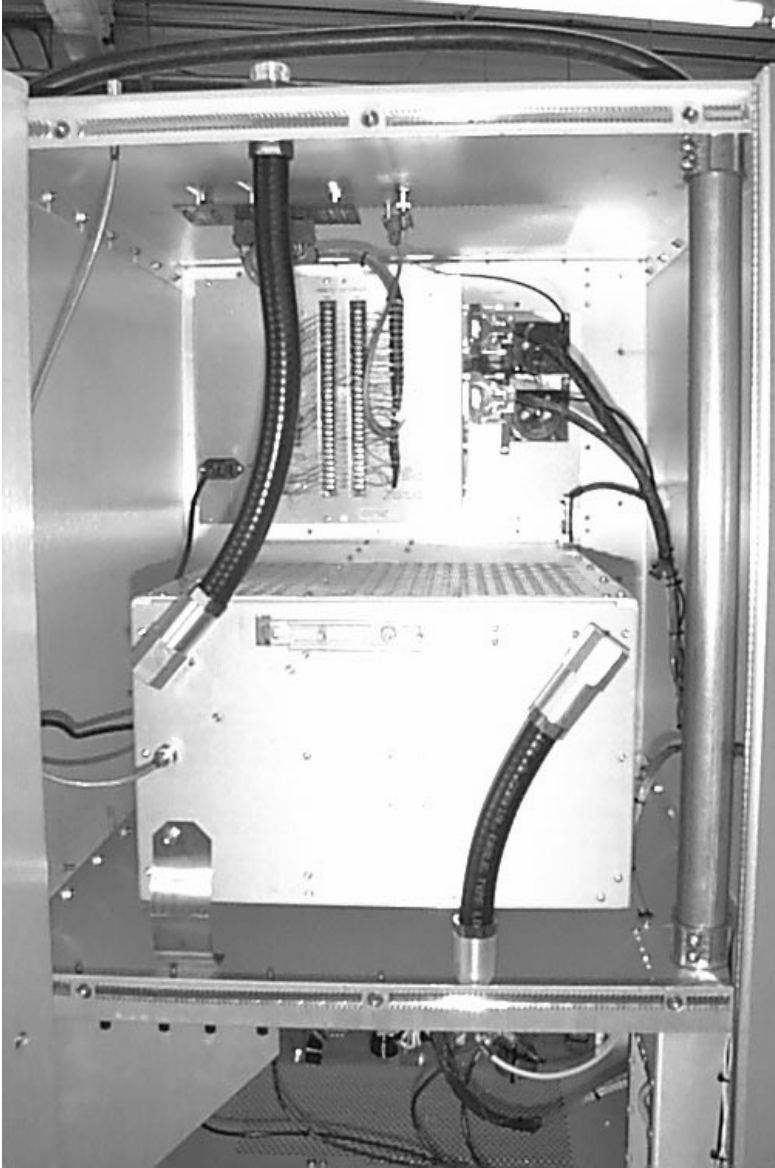
AC Distribution



Exciter/Control Unit (ECU)



ECU Door Open



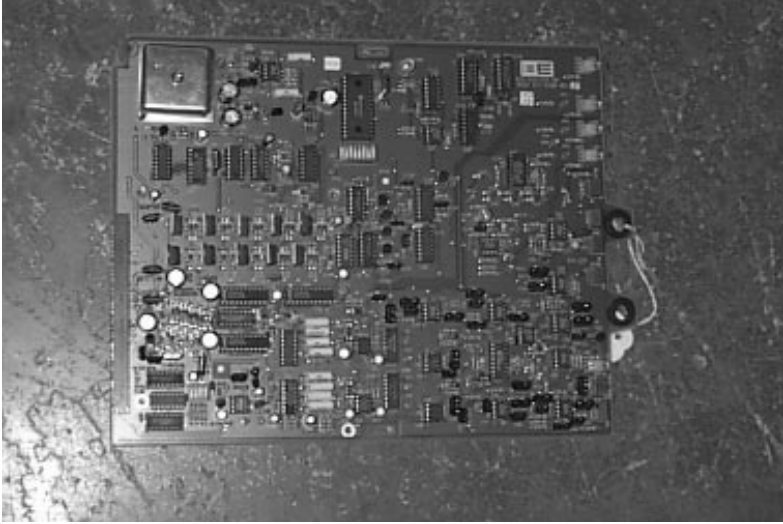
ECU/Output Network Rear View



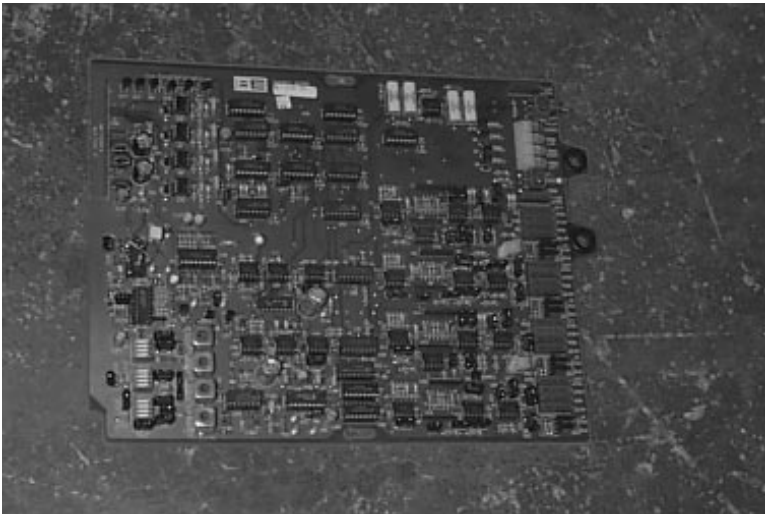
Forward Power Meter



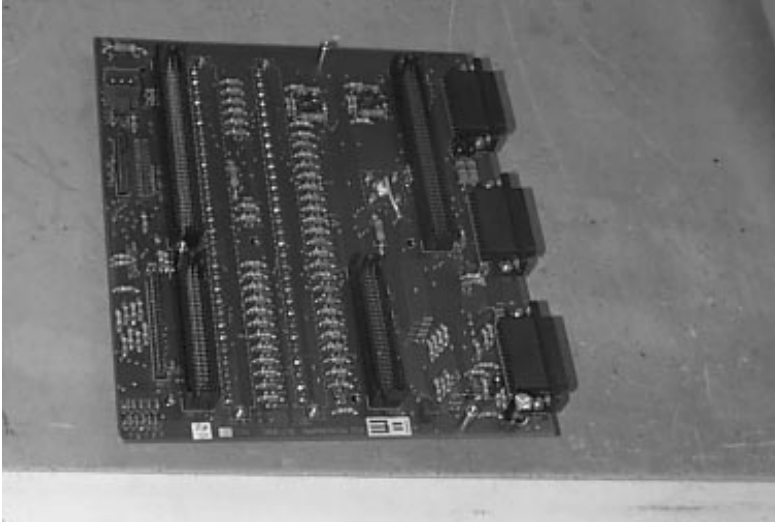
Reflect Power Meter



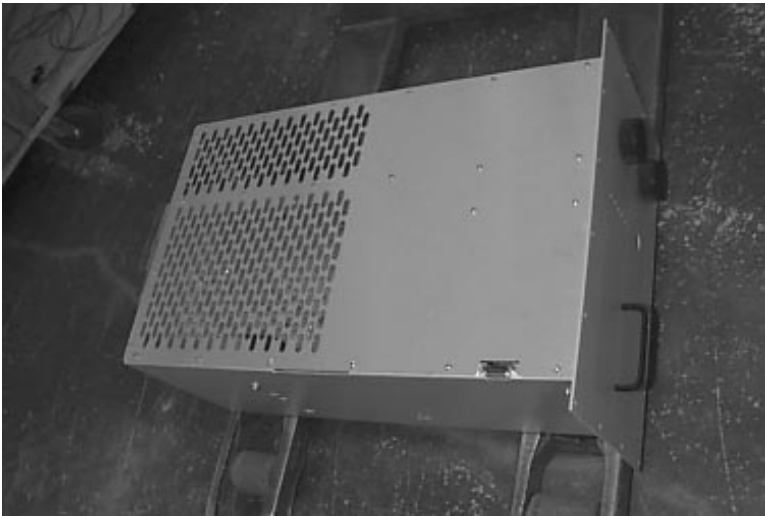
Exciter PCB



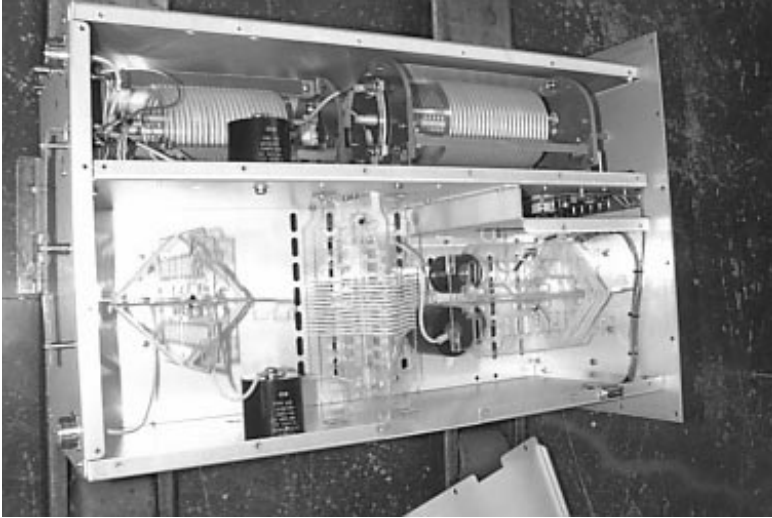
Stereo PCB



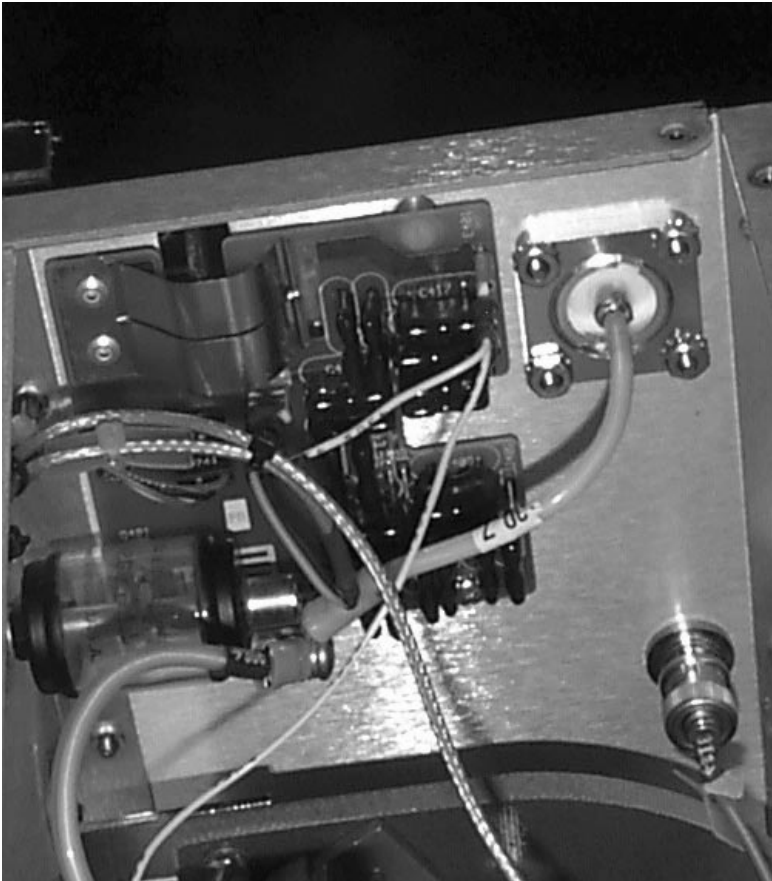
ECU Mother PCB



Output Network



Output Network Cover Removed



Spark Gap