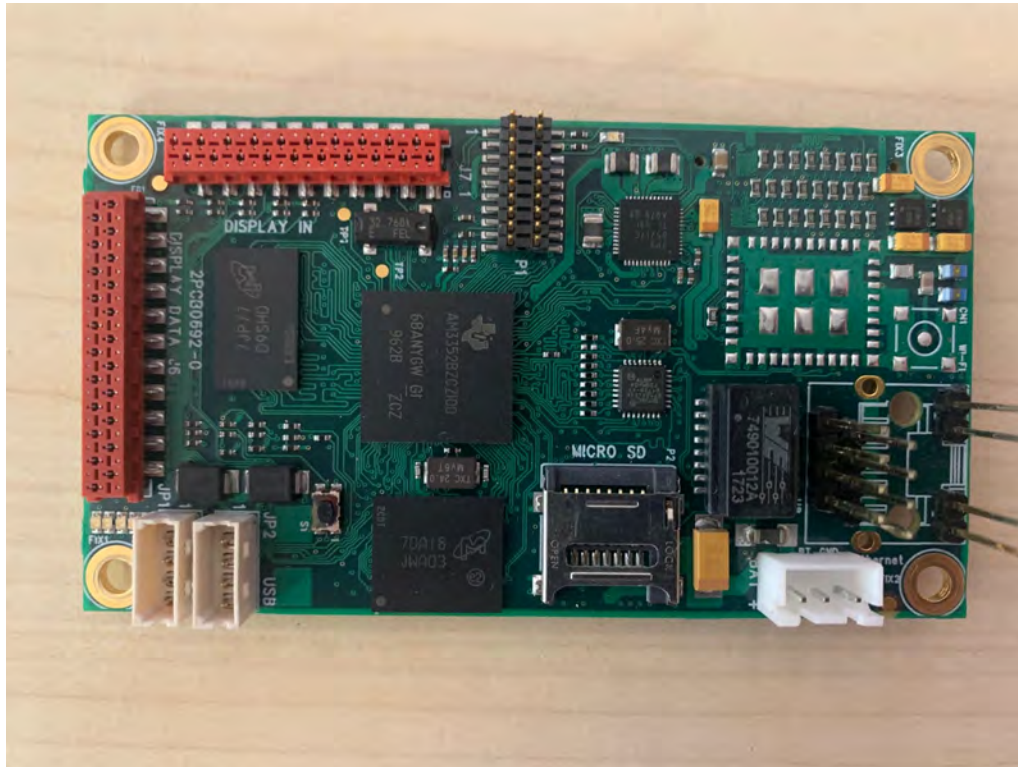
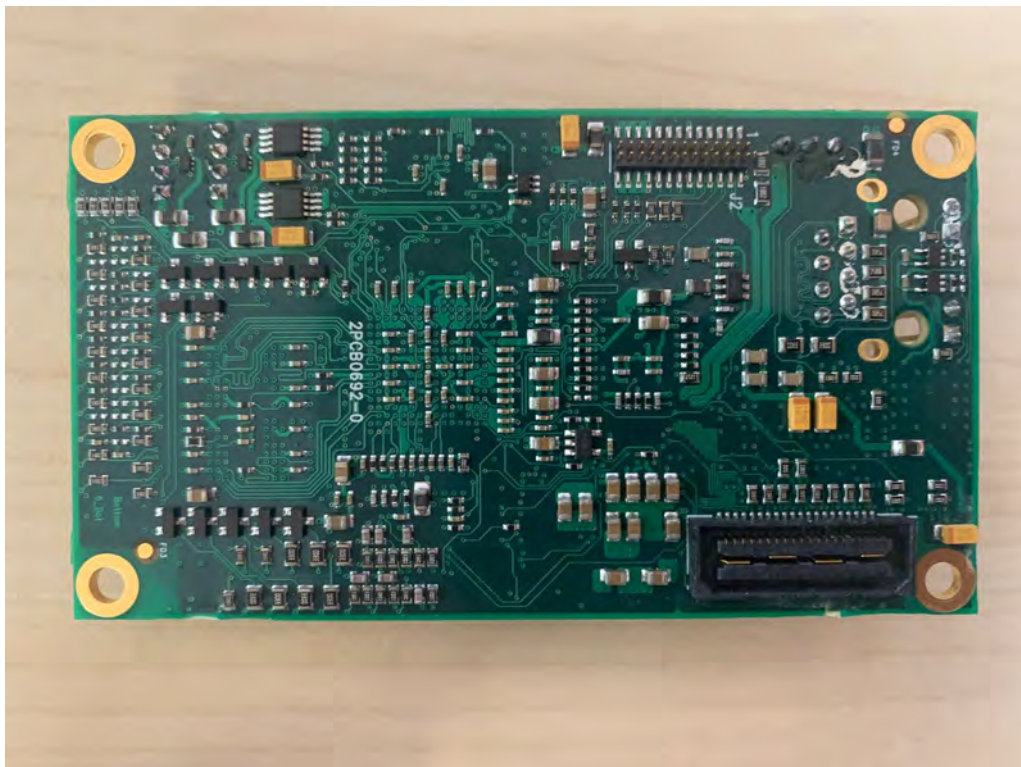


INTERNAL PHOTOS

2U3KDE283-0 MICRO STREAMING TOP



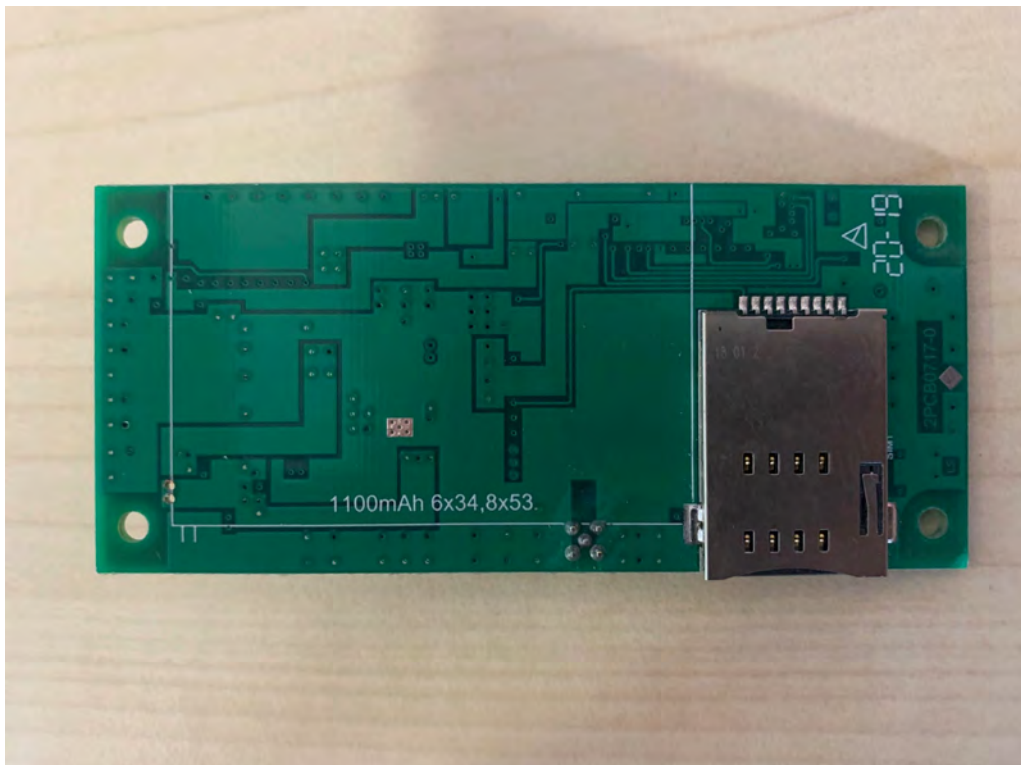
2U3KDE283-0 MICRO STREAMING BOTTOM



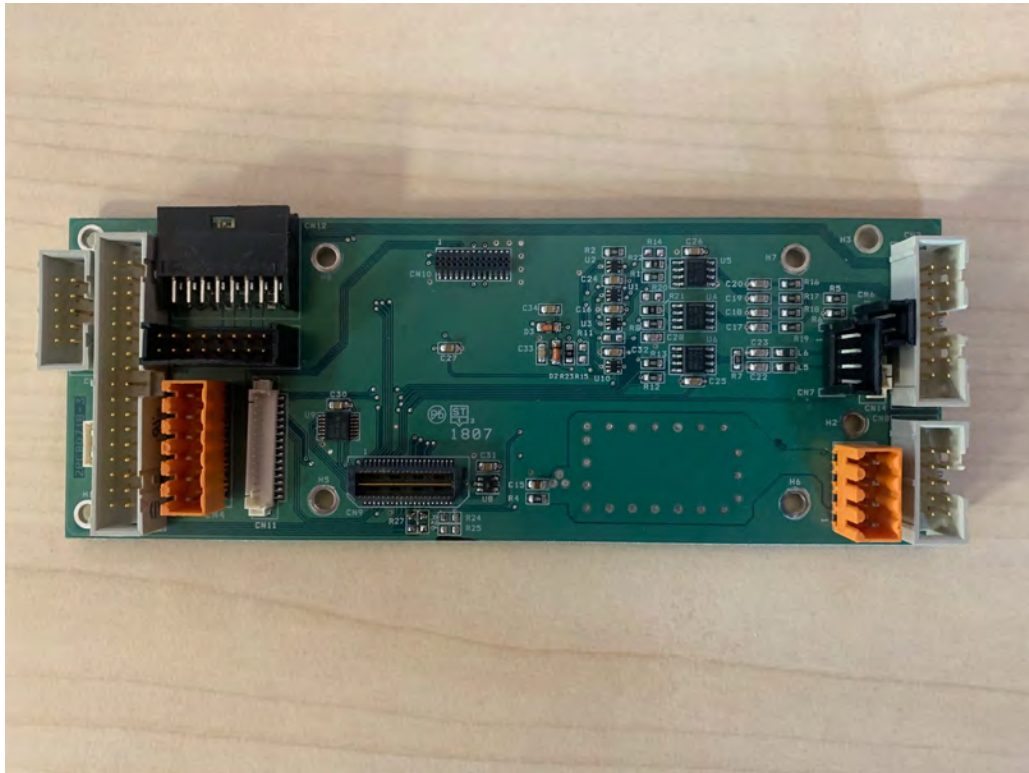
2U3KIA284-0 MODEM TOP



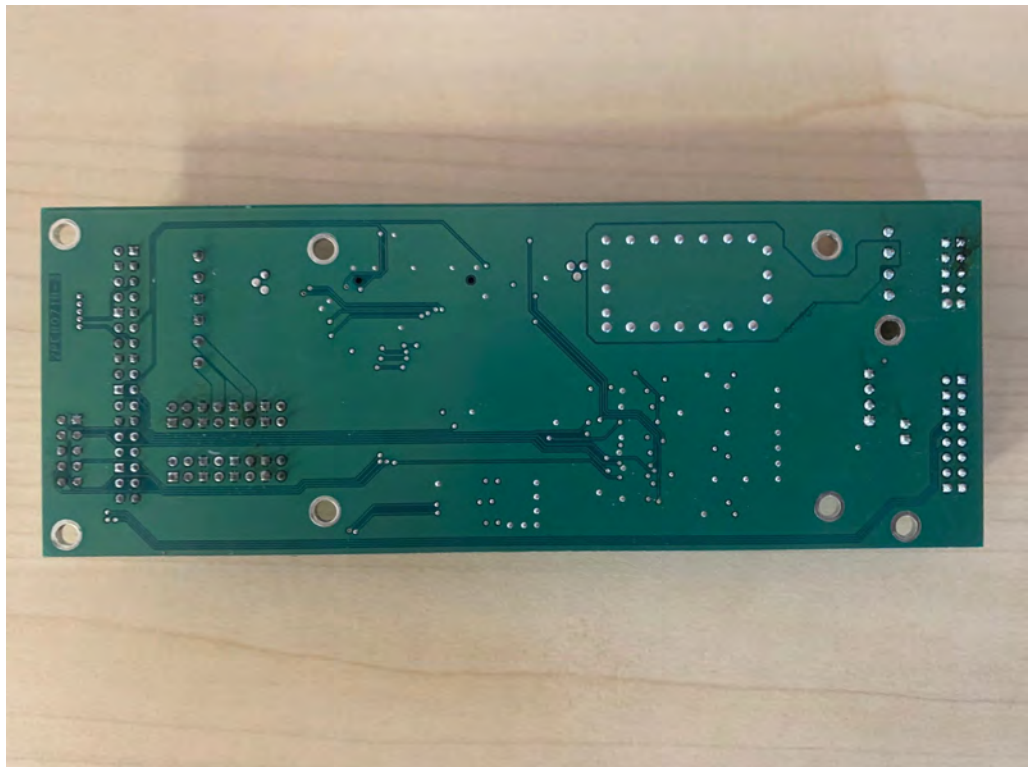
2U3KIA284-0 MODEM BOTTOM



2U3KLA284-2 AUX BOARD TOP



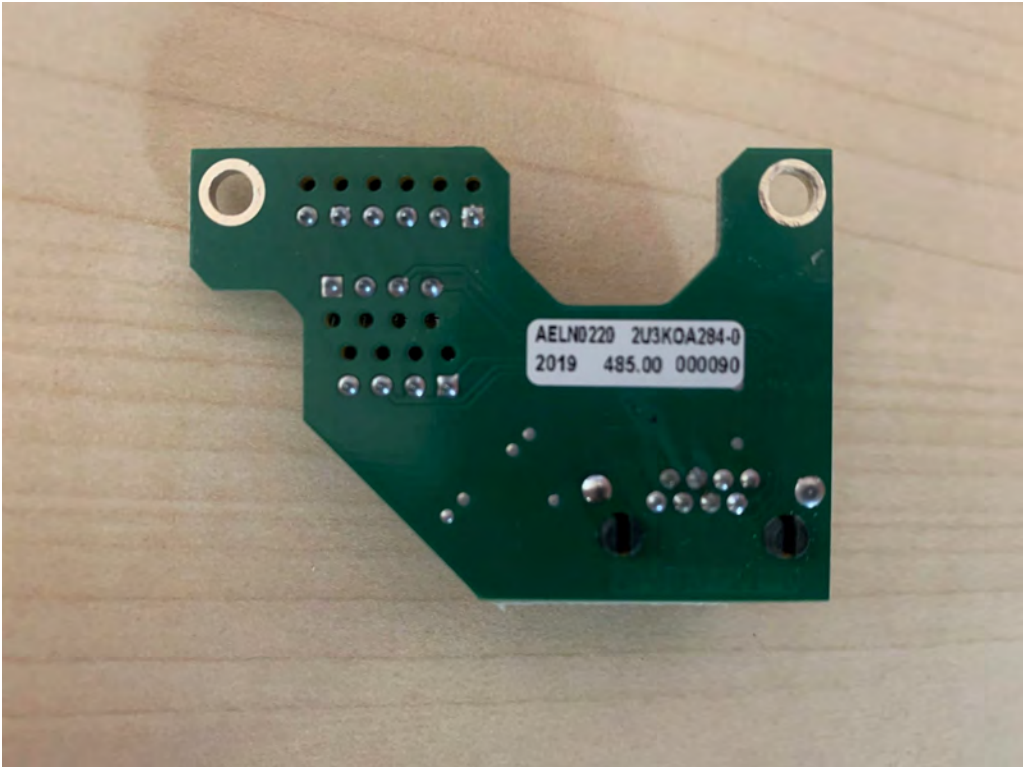
2U3KLA284-2 AUX BOARD BOTTOM



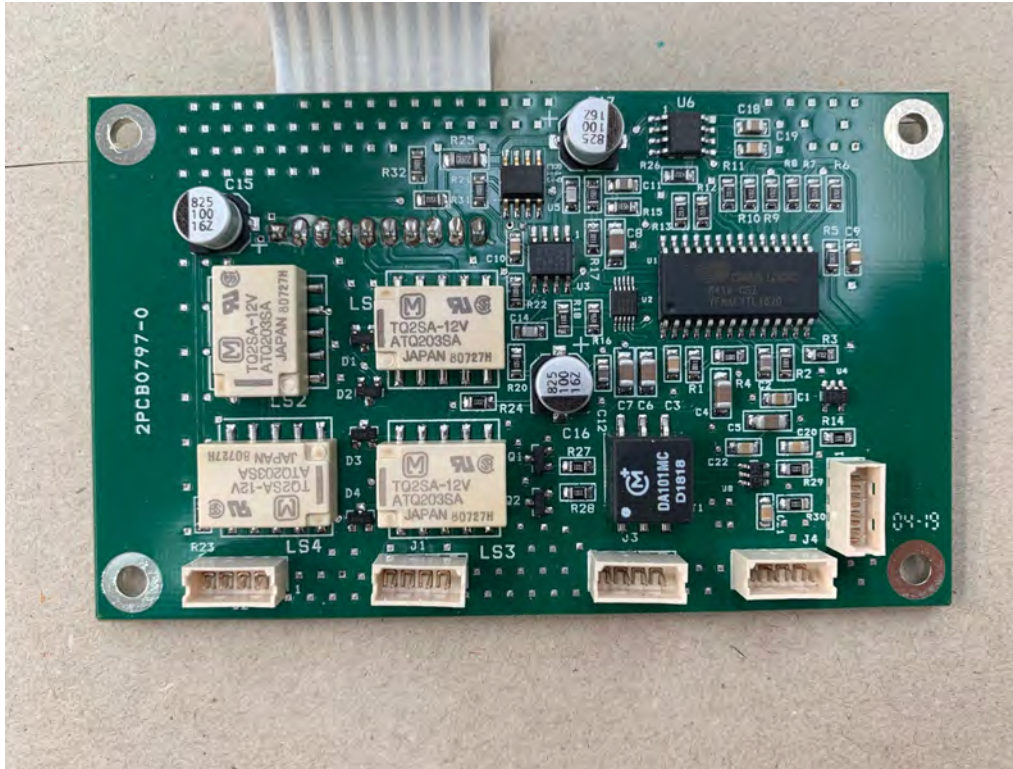
2U3KOA284-0 PIGGY BOARD TOP



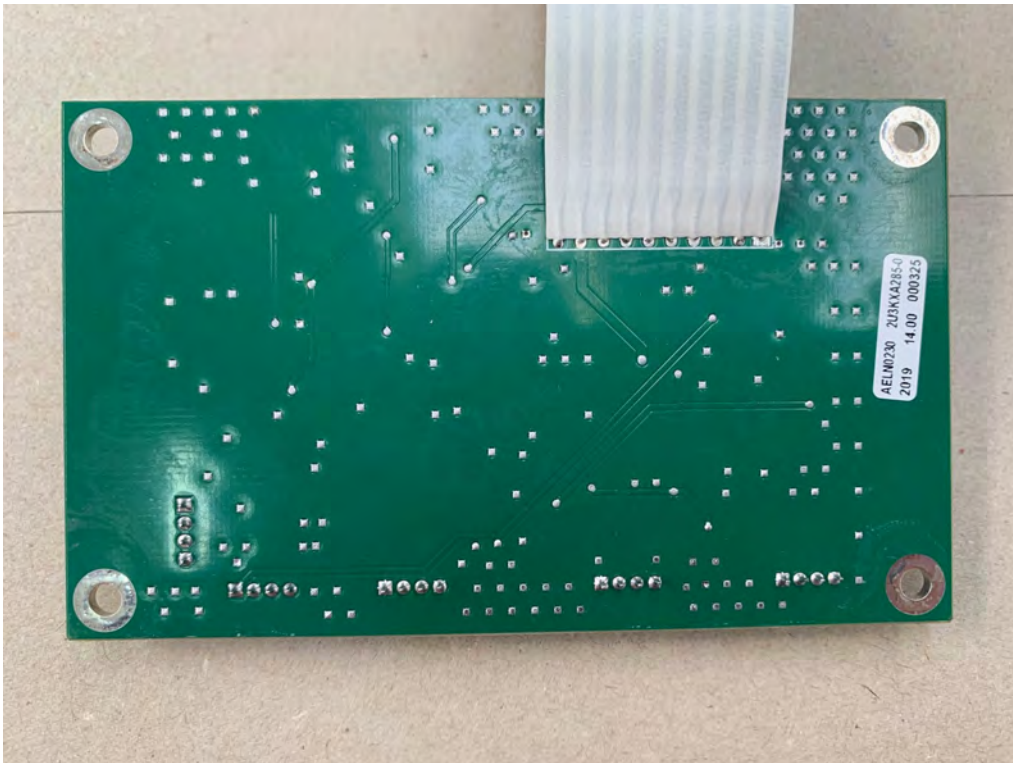
2U3KOA284-0 PIGGY BOARD BOTTOM



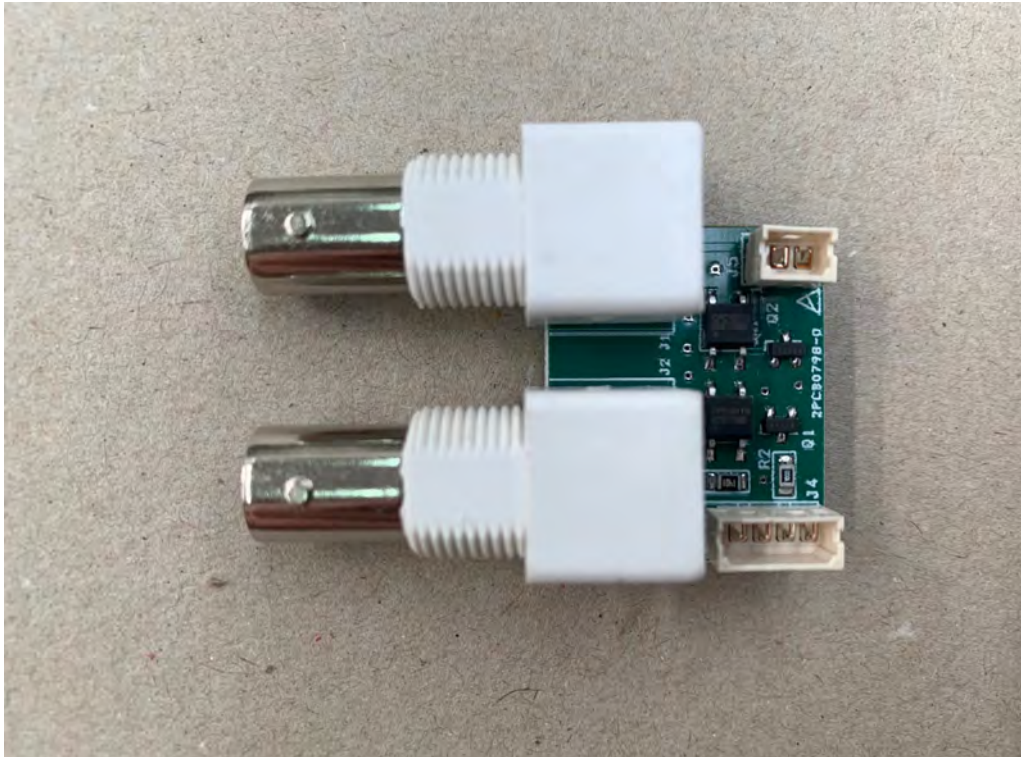
2U3KXA285-0 XLR/MPX SWITCHING TOP



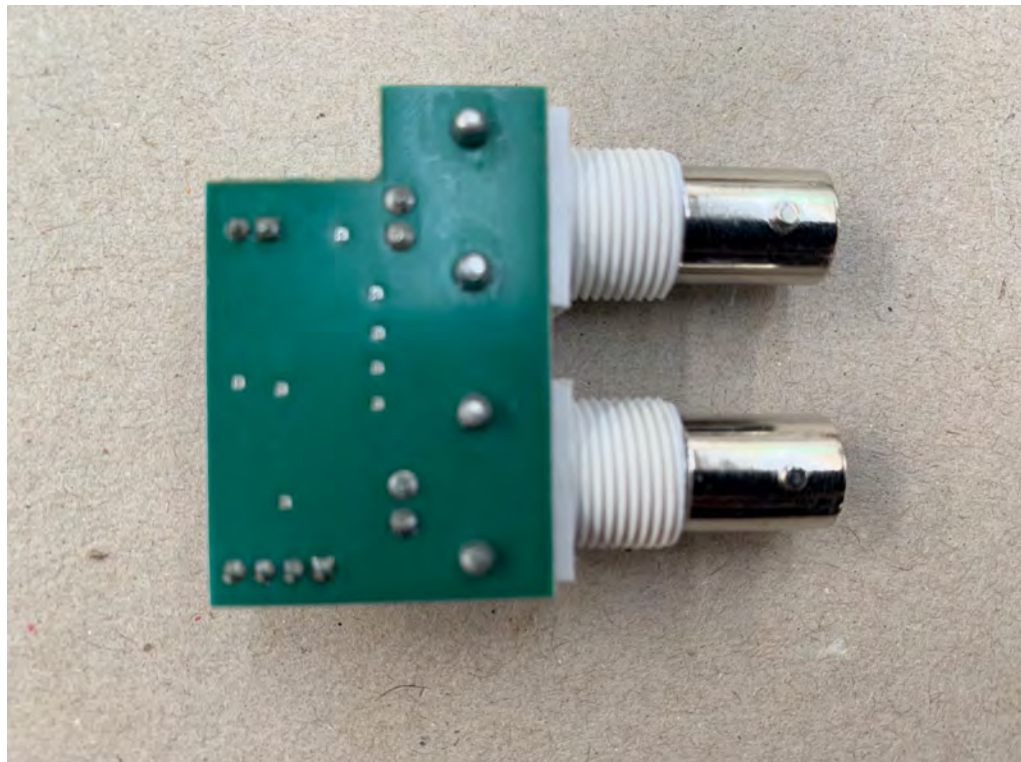
2U3KXA285-0 XLR/MPX SWITCHING BOTTOM



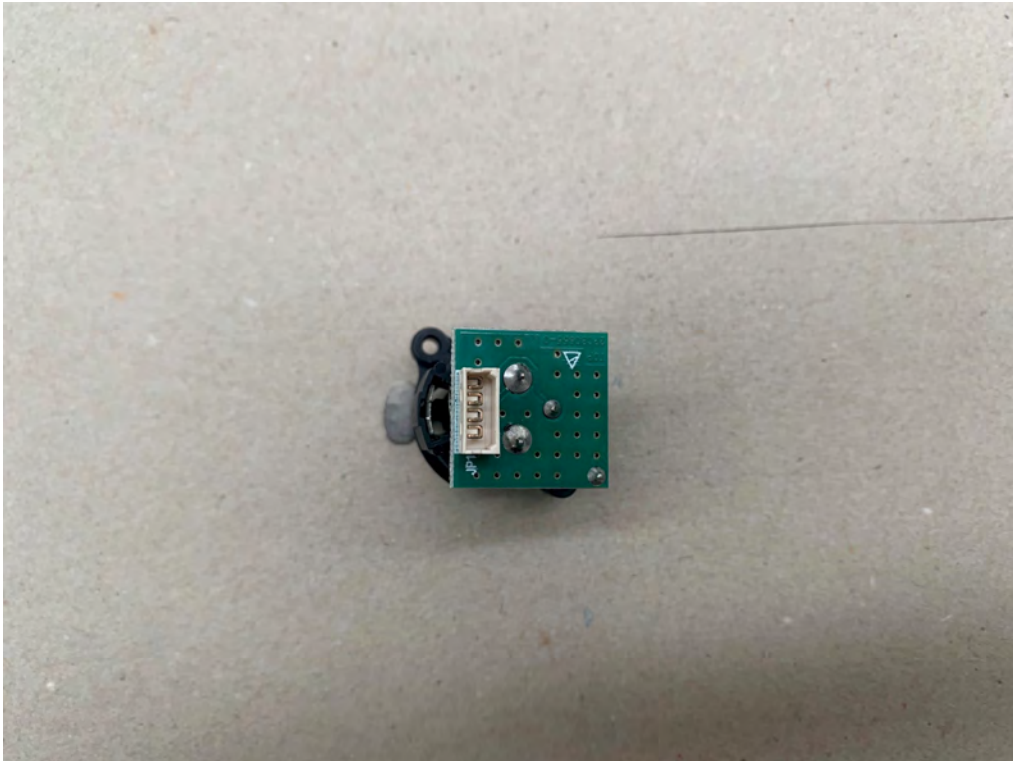
2U3KYA285-0 CONNECTION TO MPX TOP



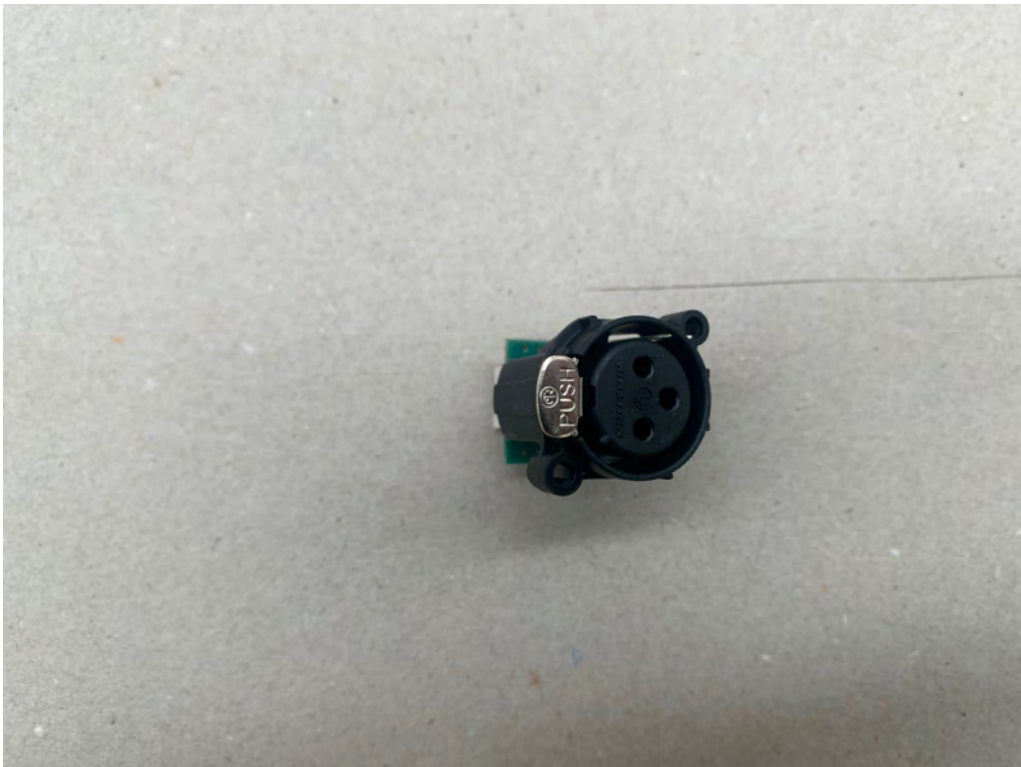
2U3KYA285-0 CONNECTION TO MPX BOTTOM



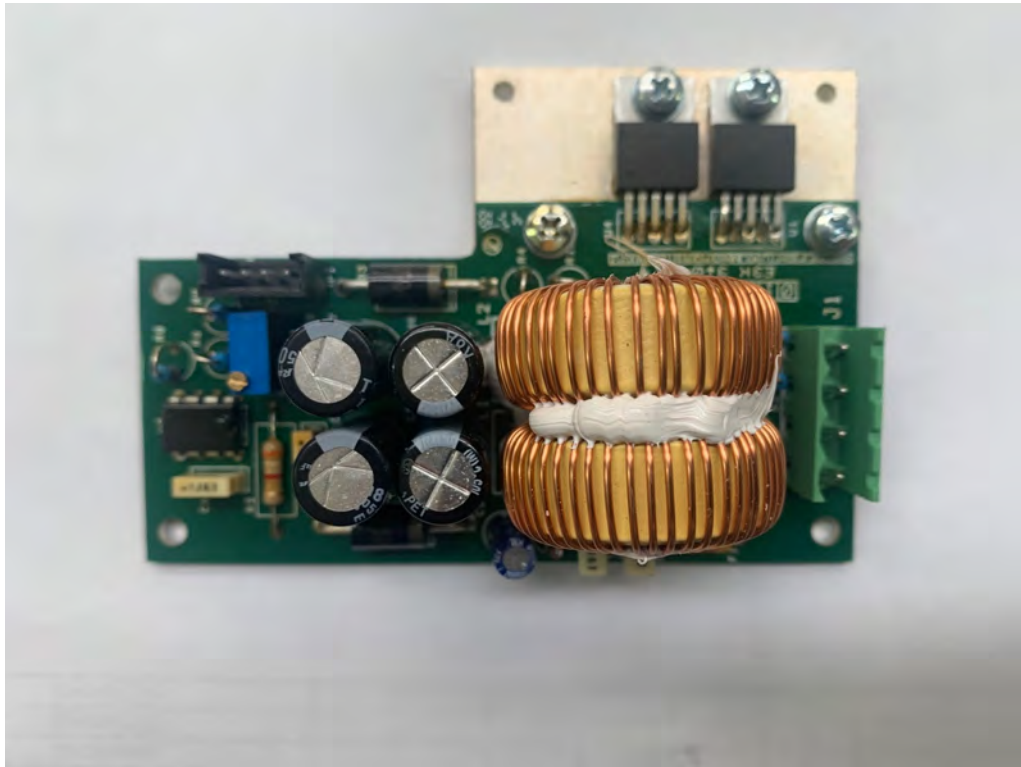
DRM 5A972-0 XLR ADAPTER TOP



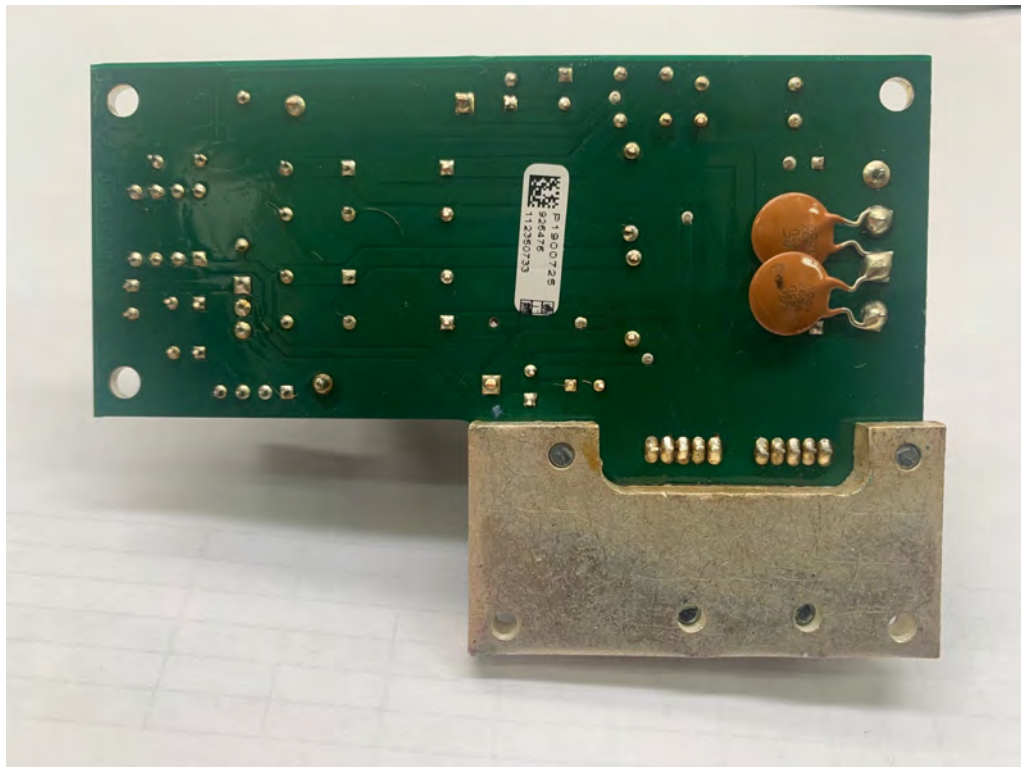
DRM 5A972-0 XLR ADAPTER BOTTOM



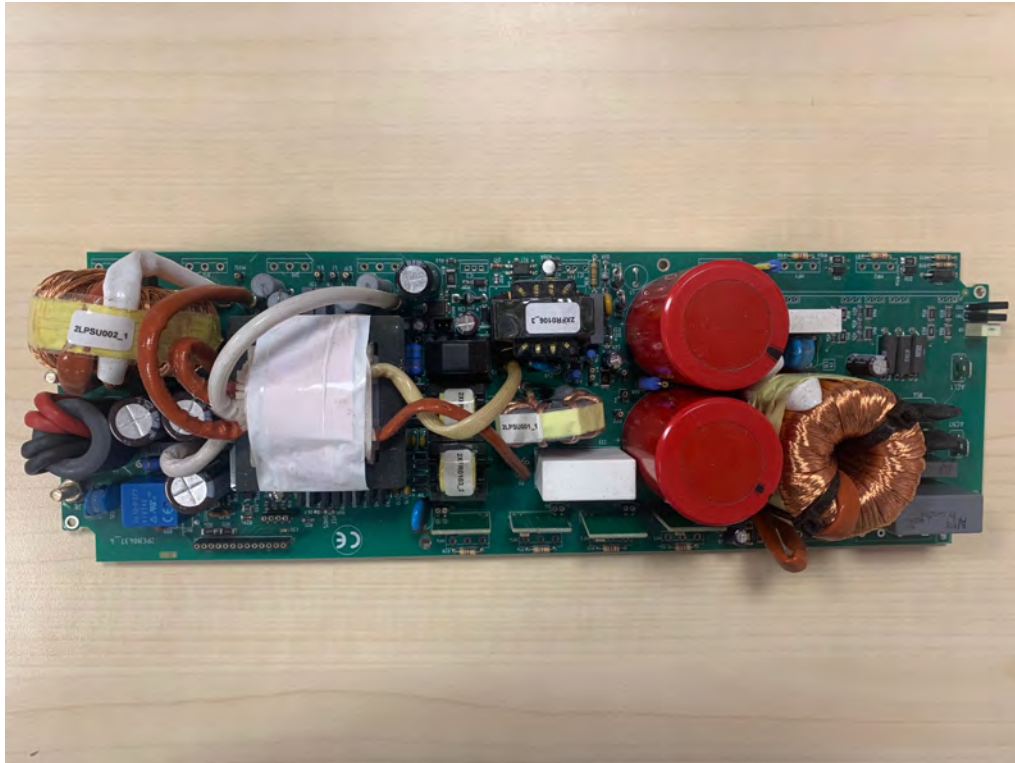
E3K 3A044-1 SW. 2 BIT 16-28V POWER BOARD TOP



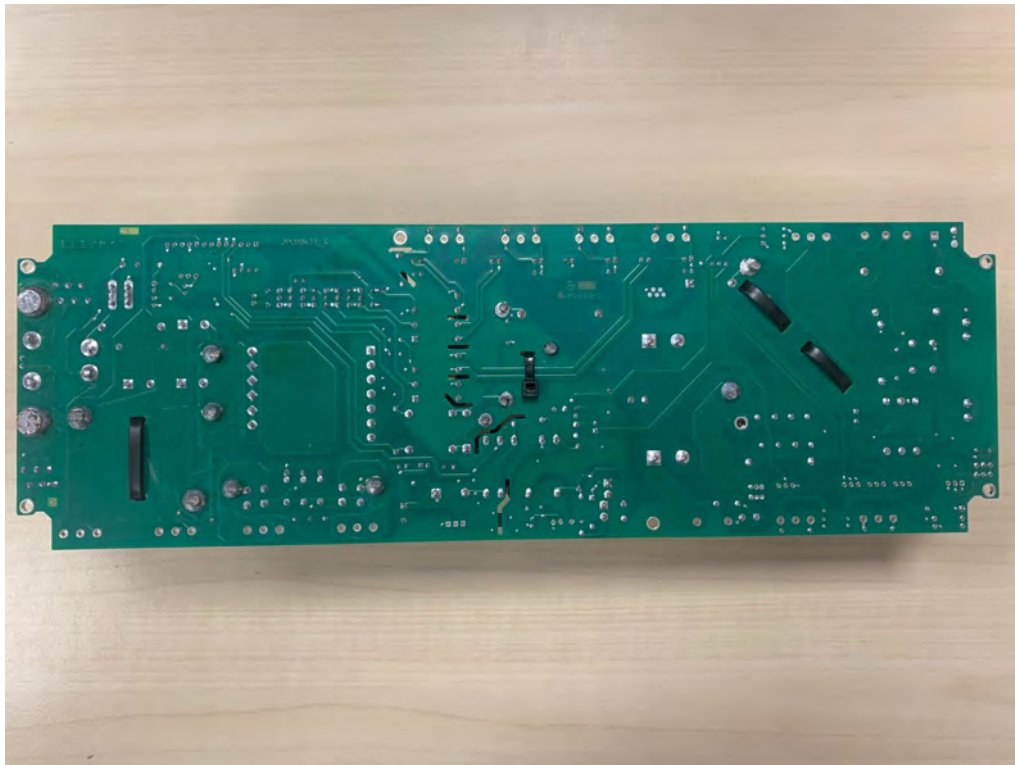
E3K 3A044-1 SW. 2 BIT 16-28V POWER BOARD BOTTOM



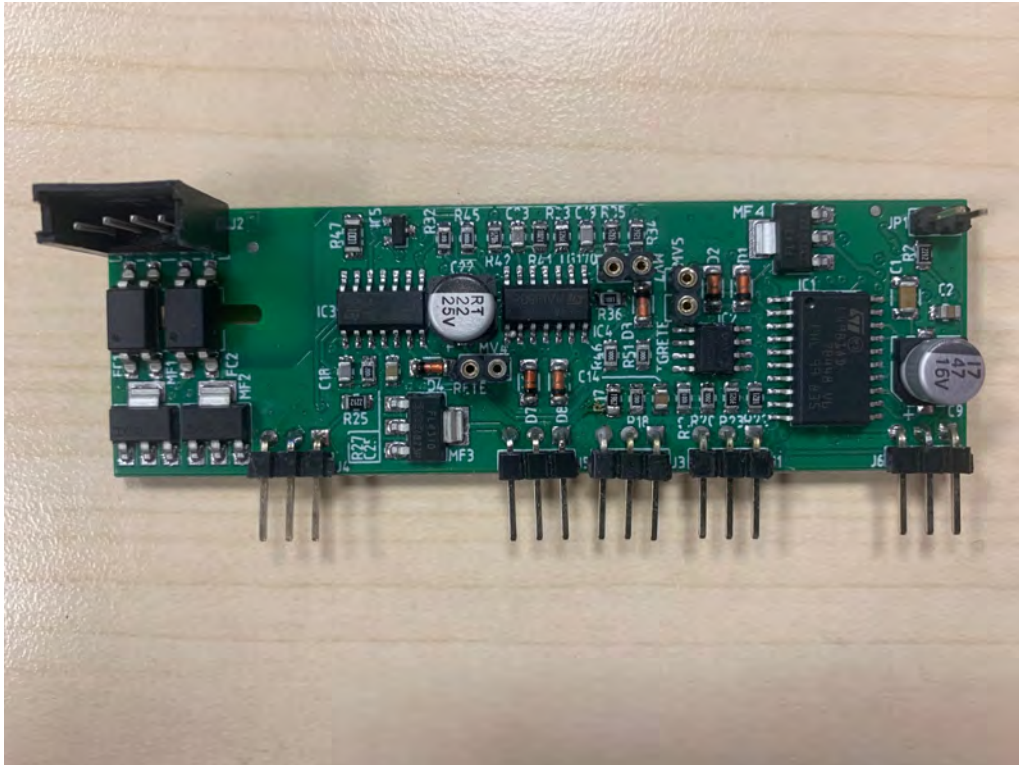
EPSU0A516-5 3KW PFC POWER BOARD TOP



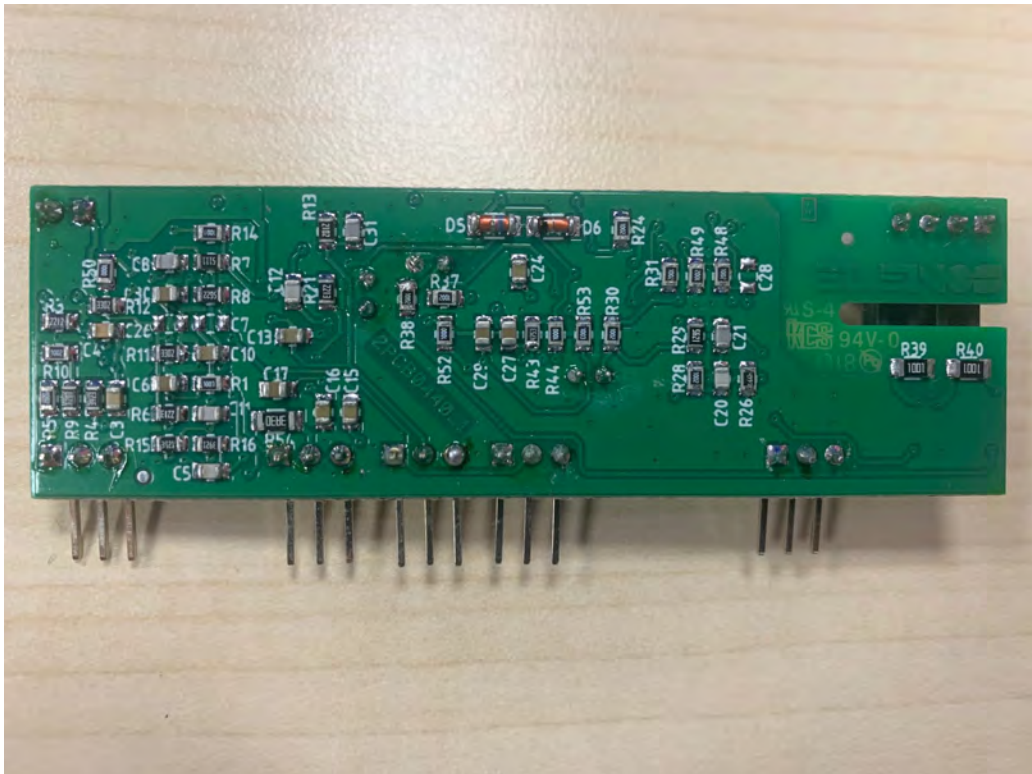
EPSU0A516-5 POWER BOARD 3KW PFC BOTTOM



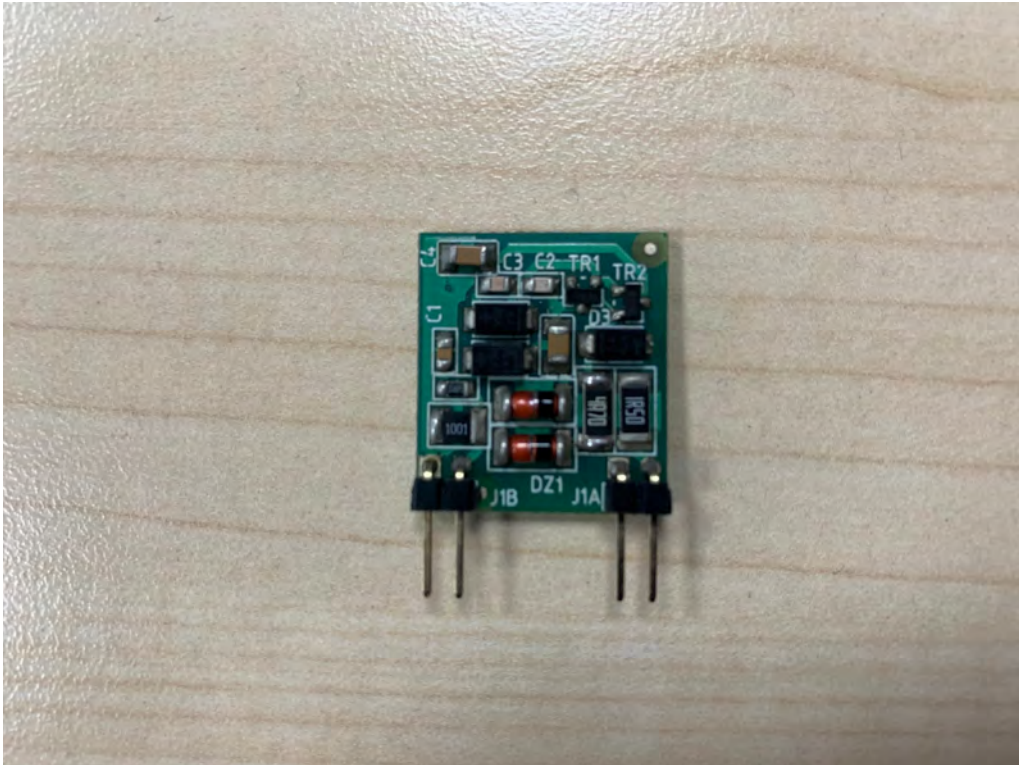
EPSU3A516-2 COM. PFC AND NETWORK TRIGGER SW. 3KW TOP



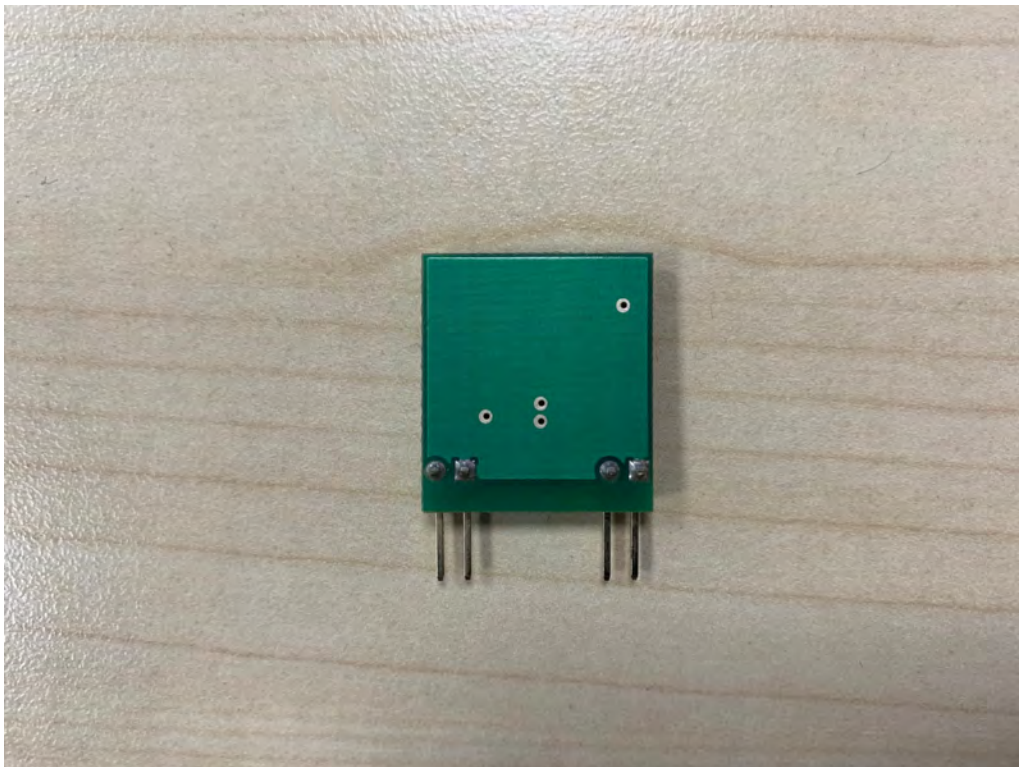
EPSU3A516-2 COM. PFC AND NETWORK TRIGGER SW. 3KW BOTTOM



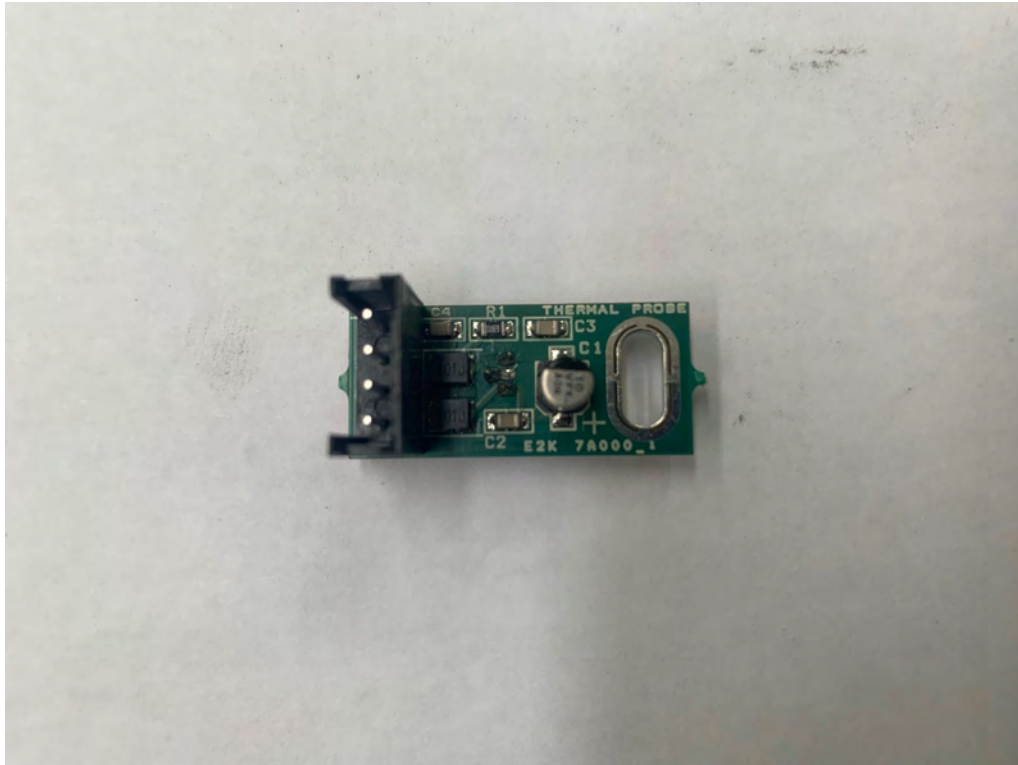
EPSU4A516-2 MOSFET DRIVER SW. 3KW TOP



EPSU4A516-2 MOSFET DRIVER SW. 3KW BOTTOM



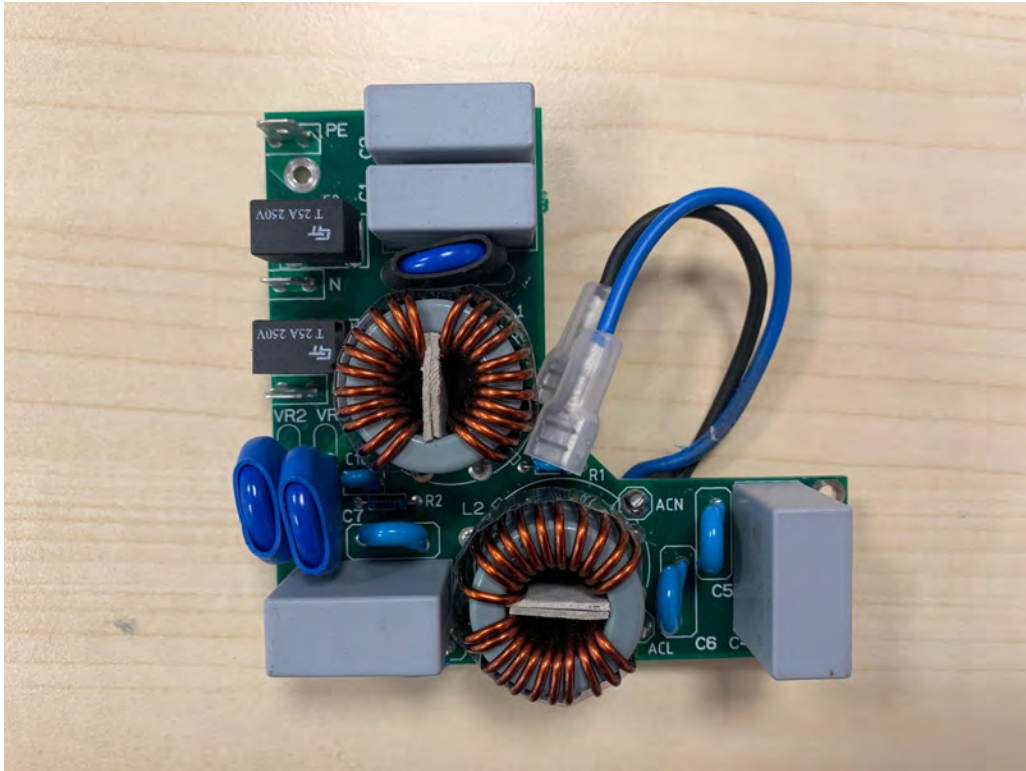
EPSU5A516-0 TEMP. PROBE SW. 3KW TOP



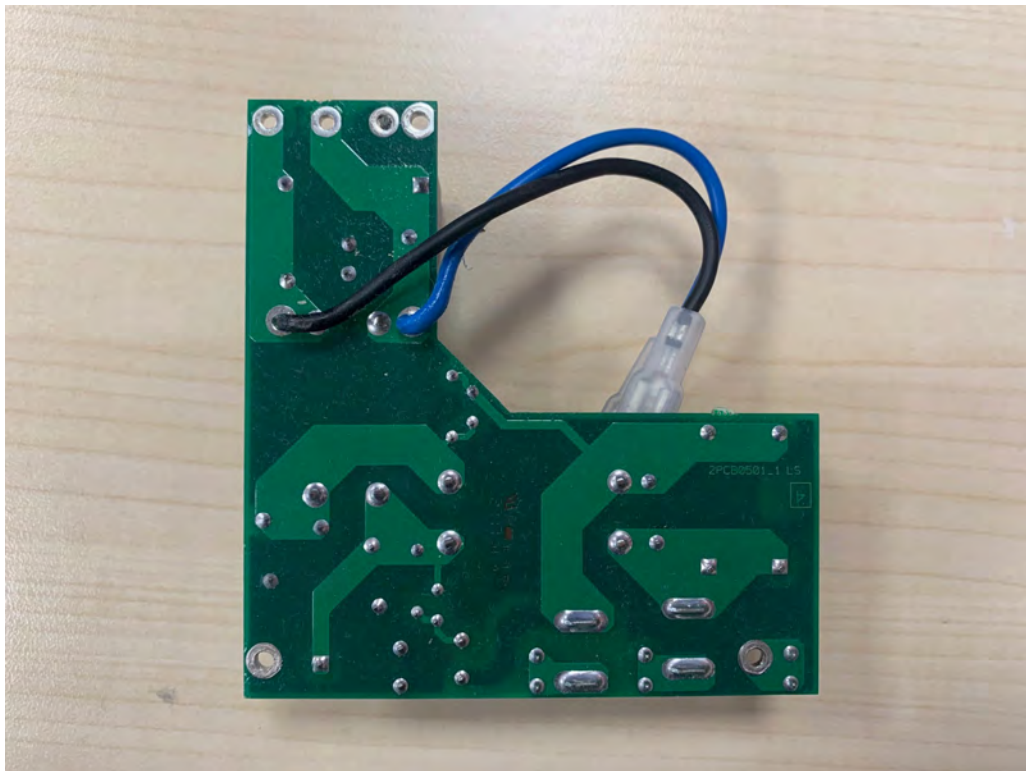
EPSU5A516-0 TEMP. PROBE SW. 3KW BOTTOM



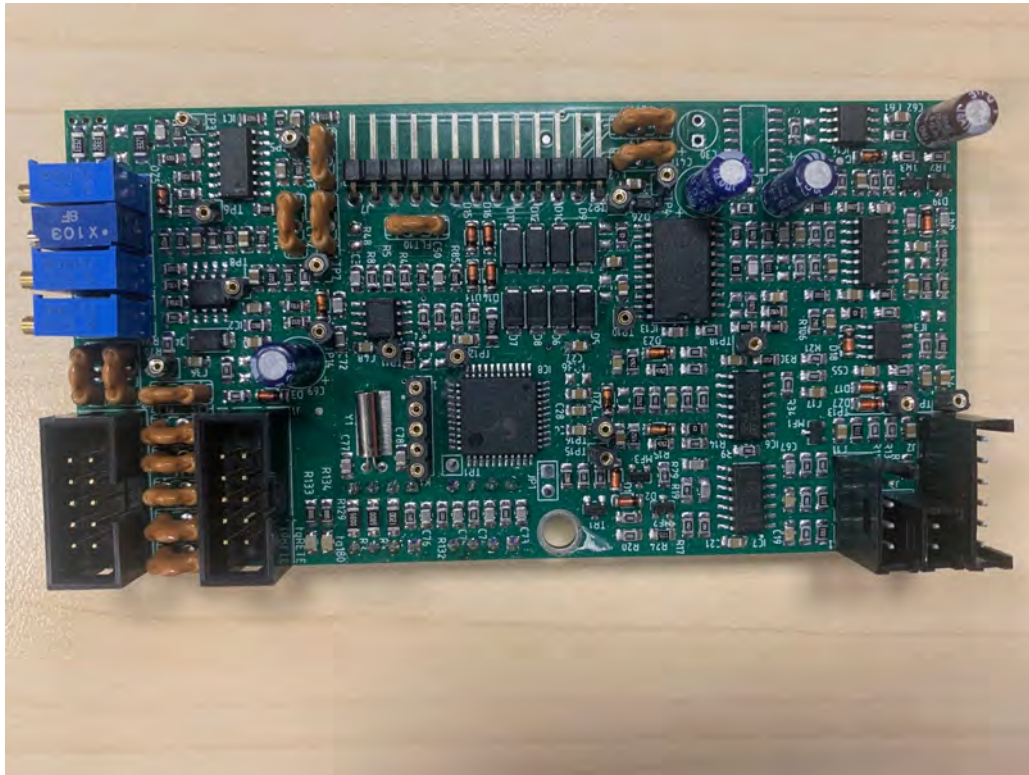
EPSU6A519-1 NETWORK FILTER BOARD WITH FUSES TOP



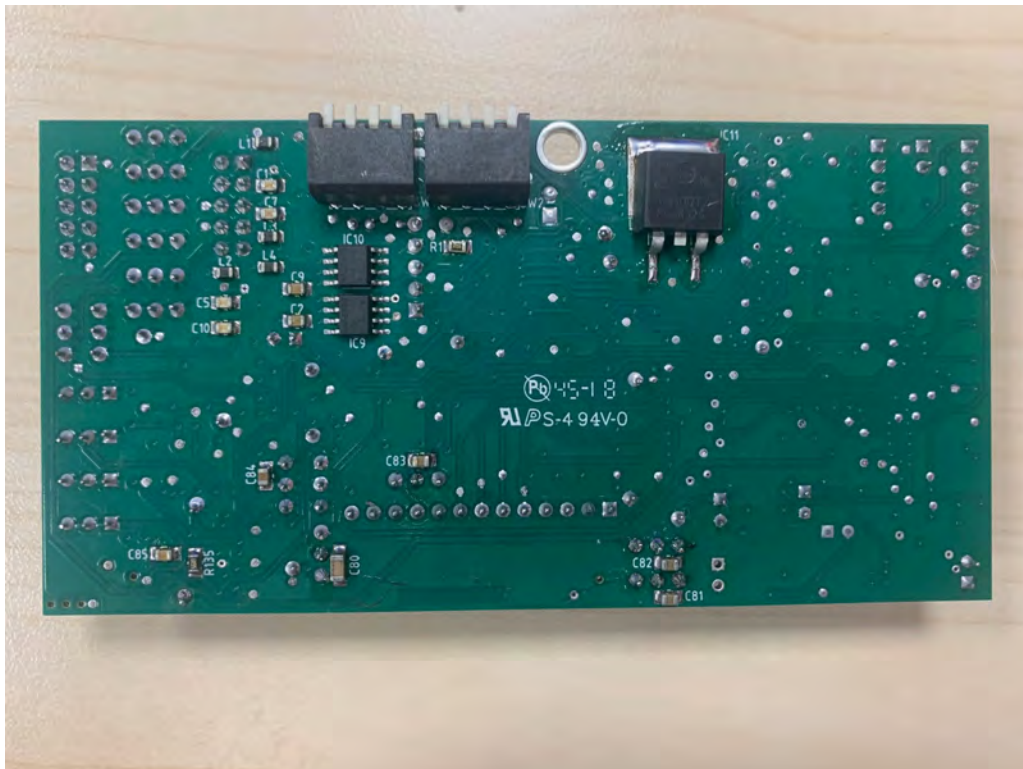
EPSU6A519-1 NETWORK FILTER BOARD WITH FUSES BOTTOM



EPSU7A510-1 POWER SUPPLY CONTROL SW.3KW 45-50V TOP



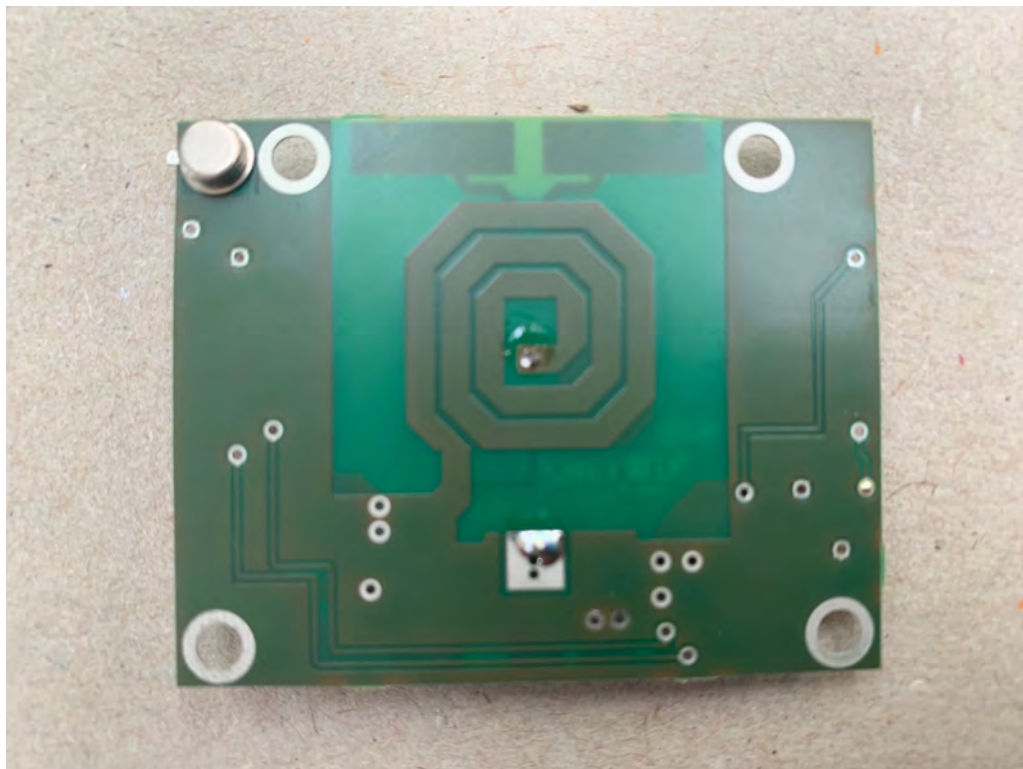
EPSU7A510-1 POWER SUPPLY CONTROL SW.3KW 45-50V BOTTOM



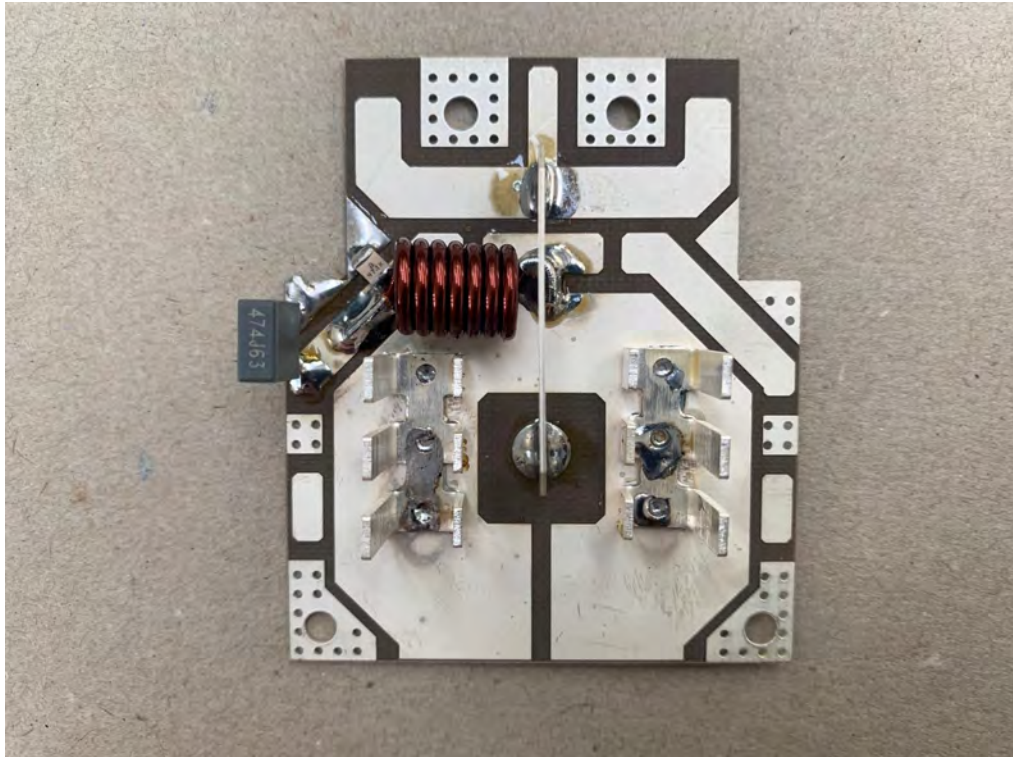
P5780A279-4 INPUT STAGE FOR BLF578 TOP



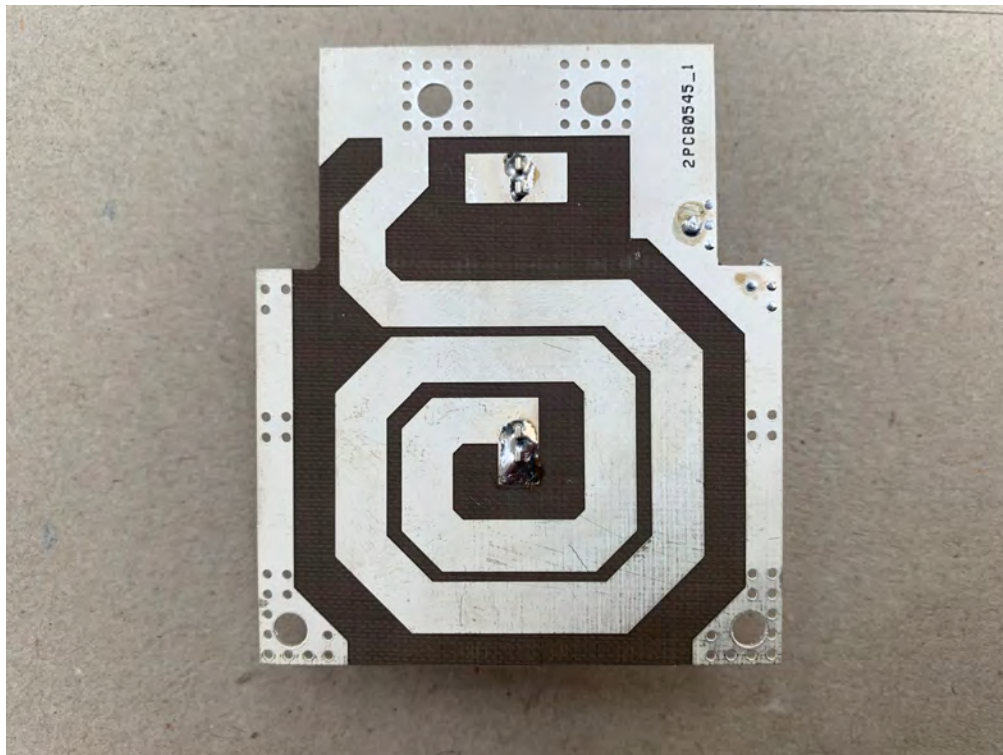
P5780A279-4 INPUT STAGE FOR BLF578 BOTTOM



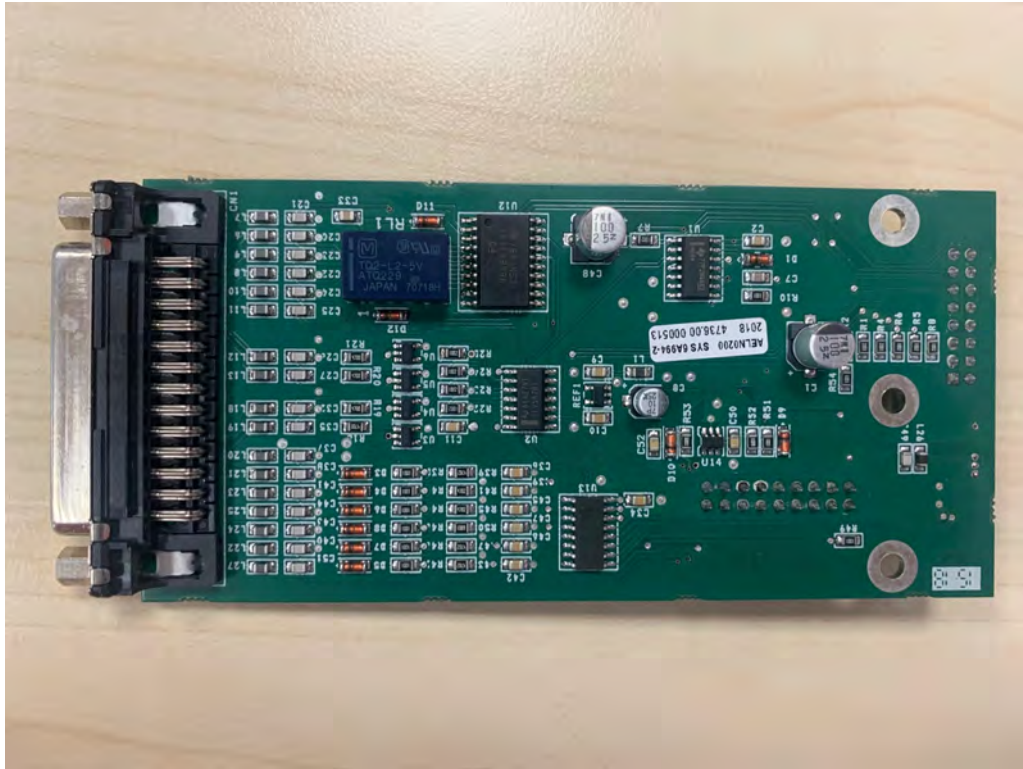
P5781A279-4 OUTPUT STAGE FOR BLF578 TOP



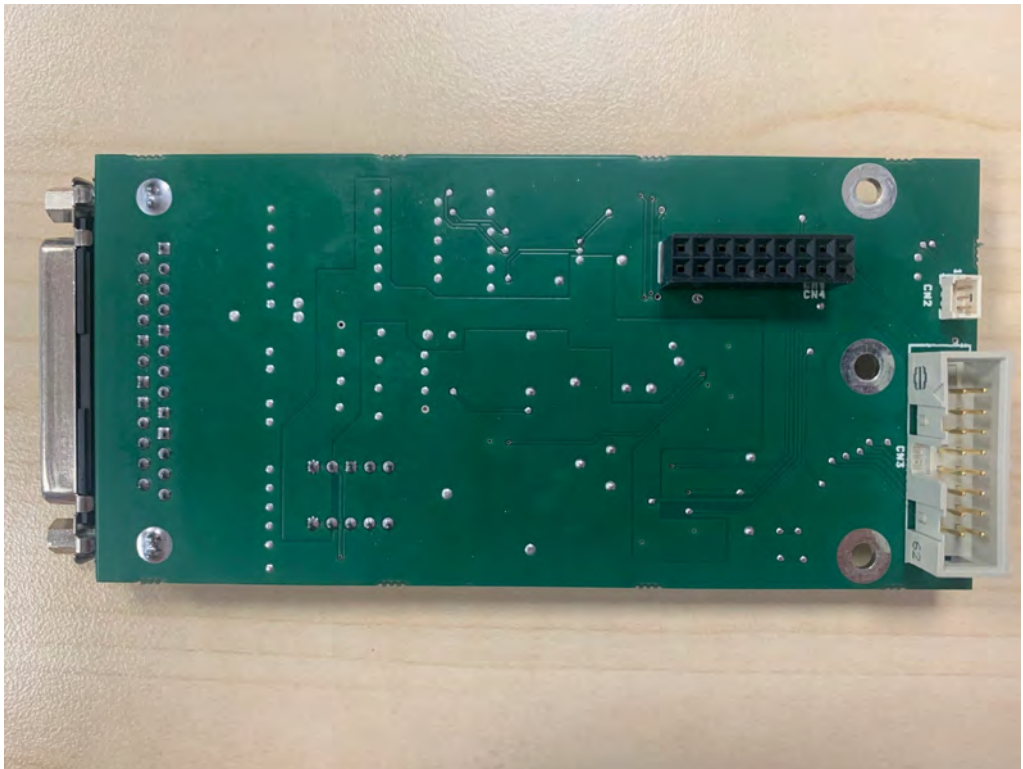
P5781A279-4 OUTPUT STAGE FOR BLF578 BOTTOM



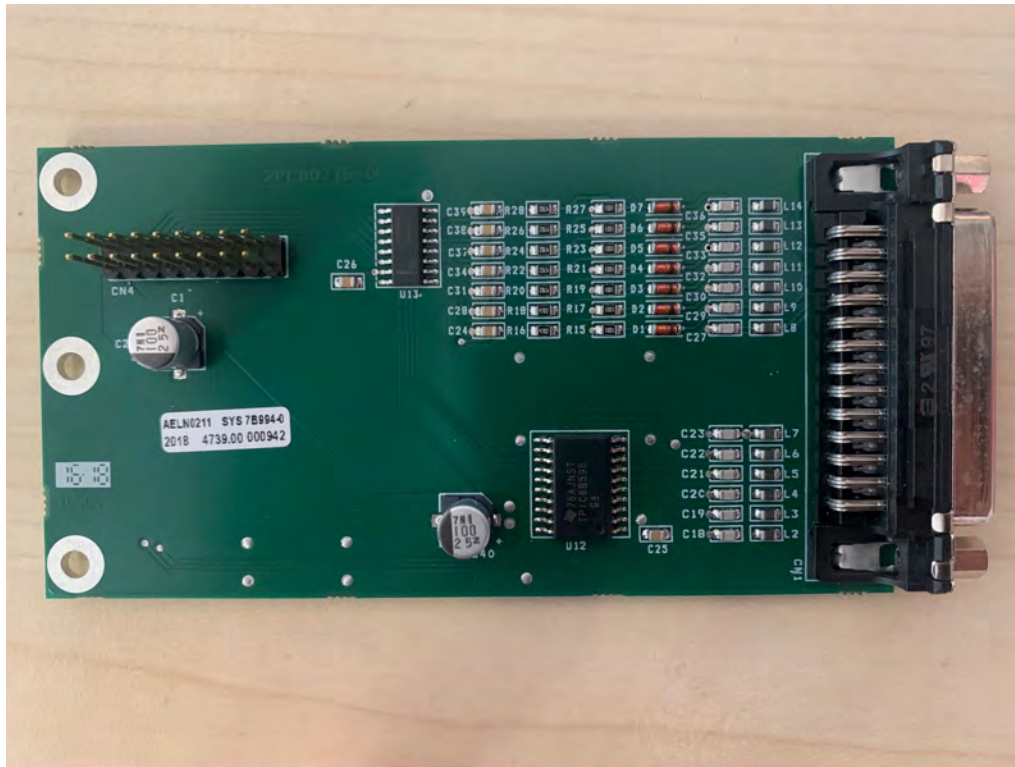
SYS 6A994-2 TC/TS BOARD TOP



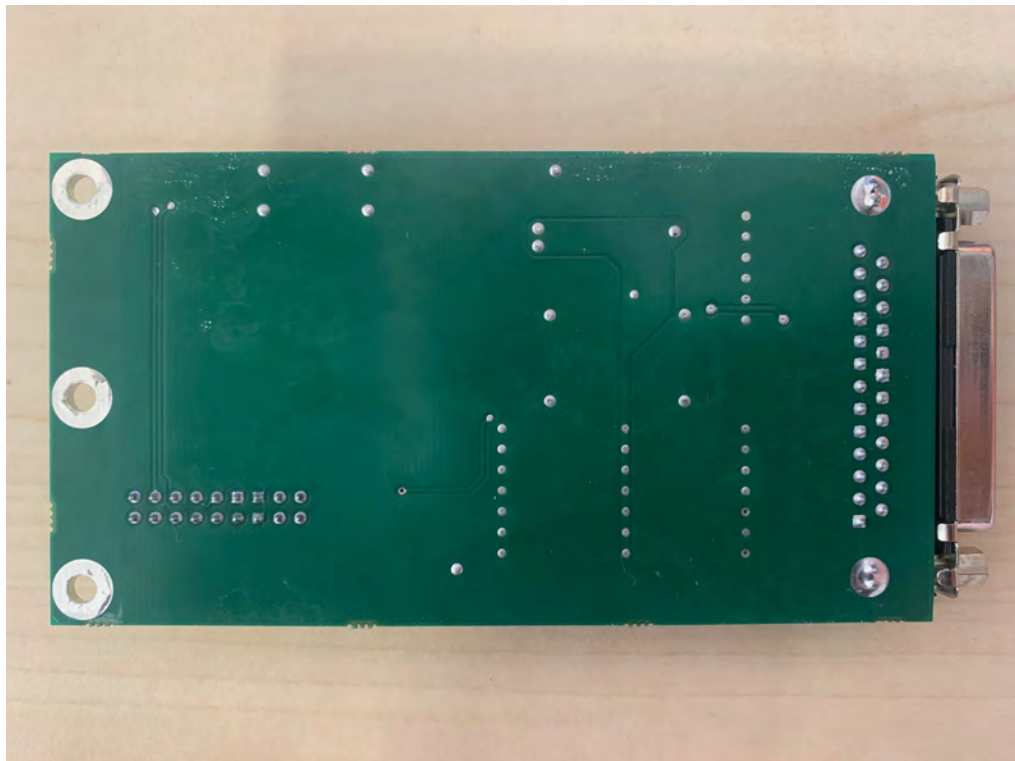
SYS 6A994-2 TC/TS BOARD BOTTOM



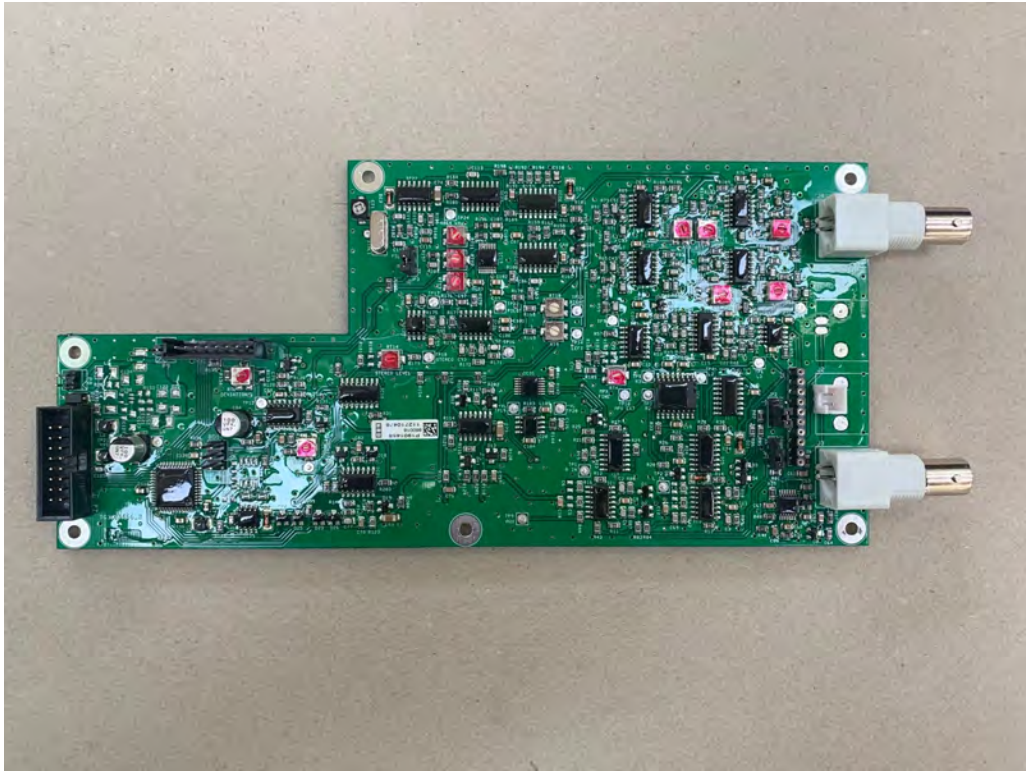
SYS 7B994-0 PROFILES BOARD TOP



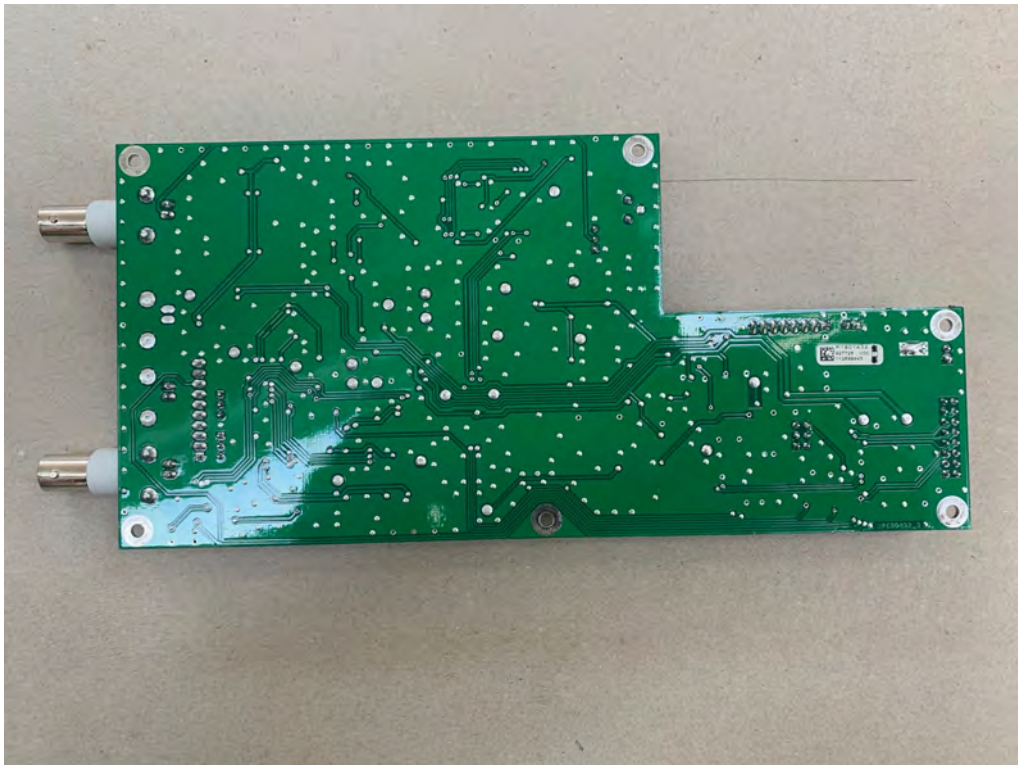
SYS 7B994-0 PROFILES BOARD BOTTOM



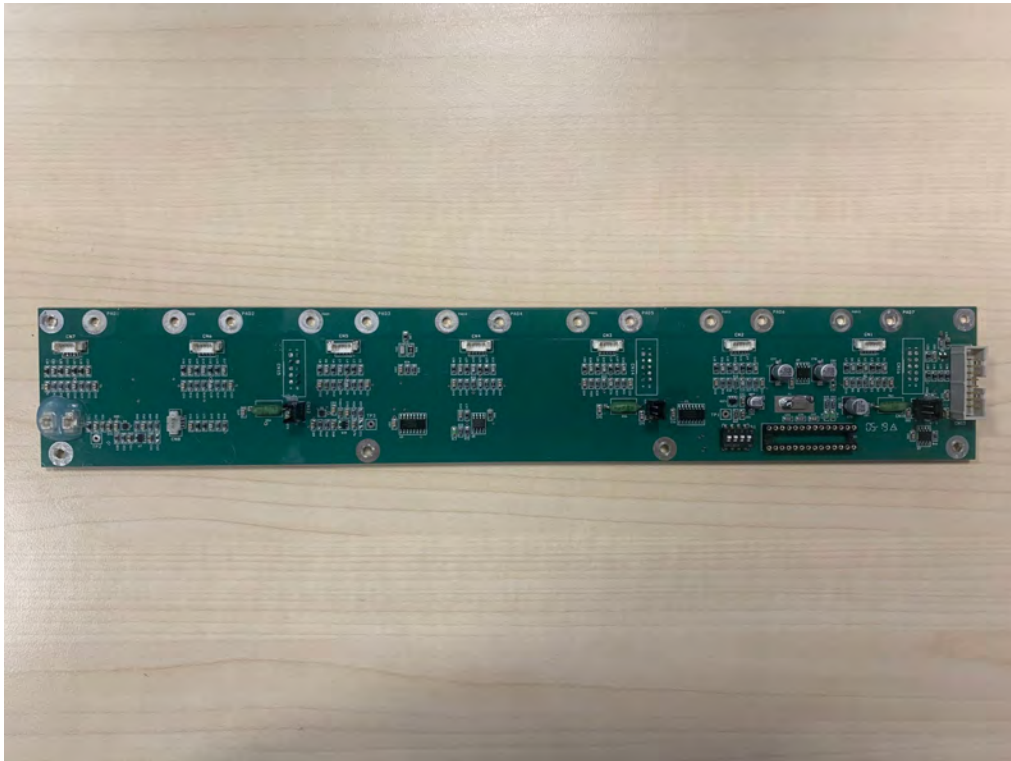
TG3K0C866-2 STEREO CODER TOP



TG3K0C866-2 STEREO CODER BOTTOM



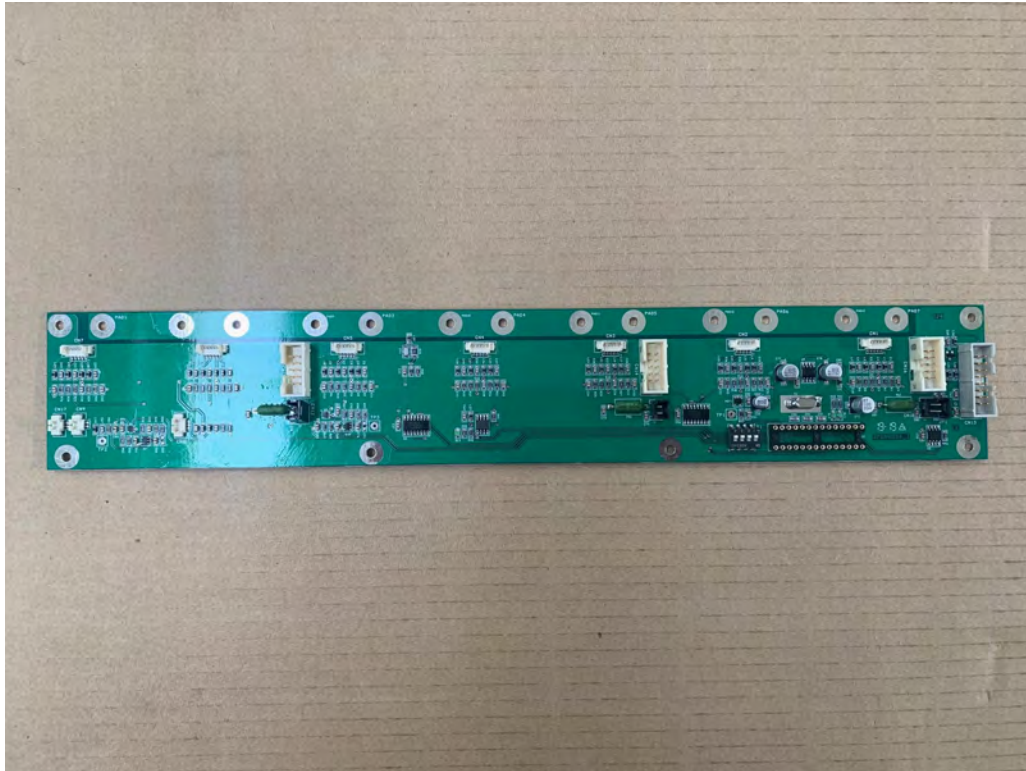
TG5K0A889-0 7-WAY SPLITTER BOARD TOP



TG5K0A889-0 7-WAY SPLITTER BOARD BOTTOM



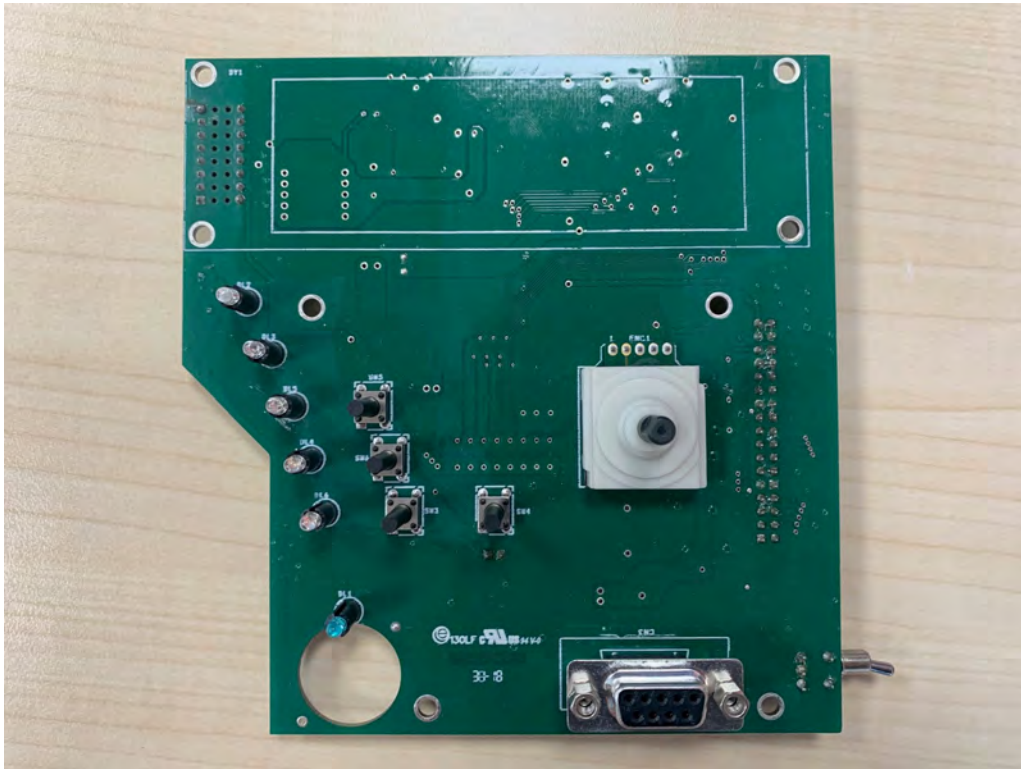
TG5K1A880-2 7-MODULES ACQUISITION BOARD TOP



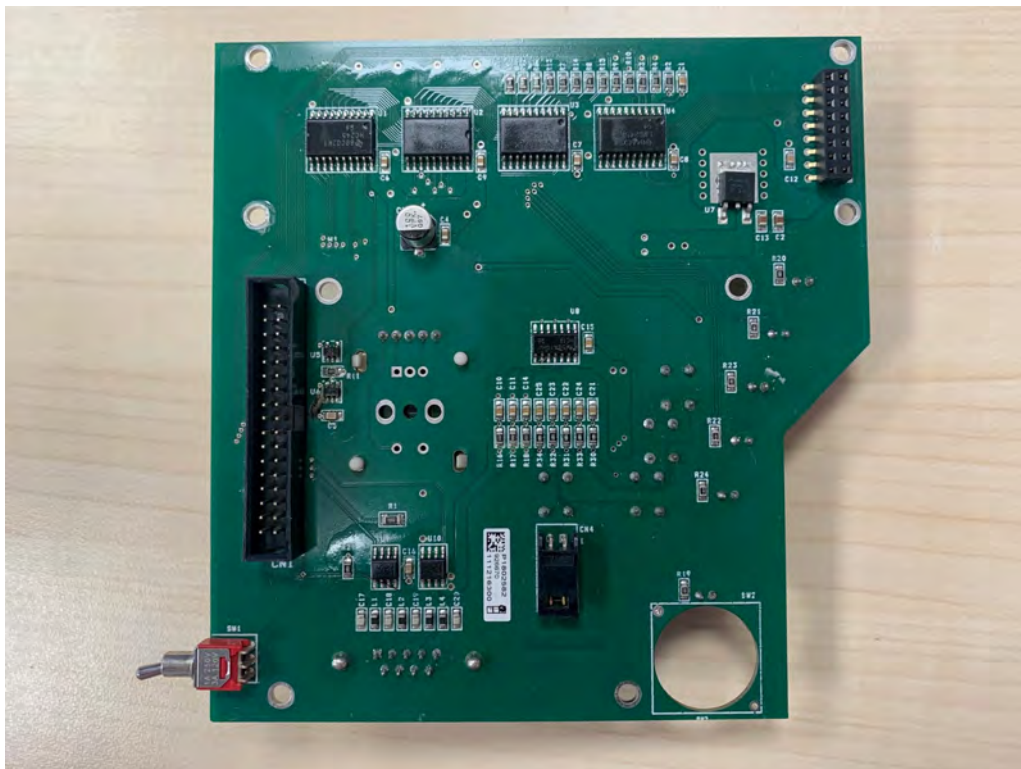
TG5K1A880-2 7-MODULES ACQUISITION BOARD BOTTOM



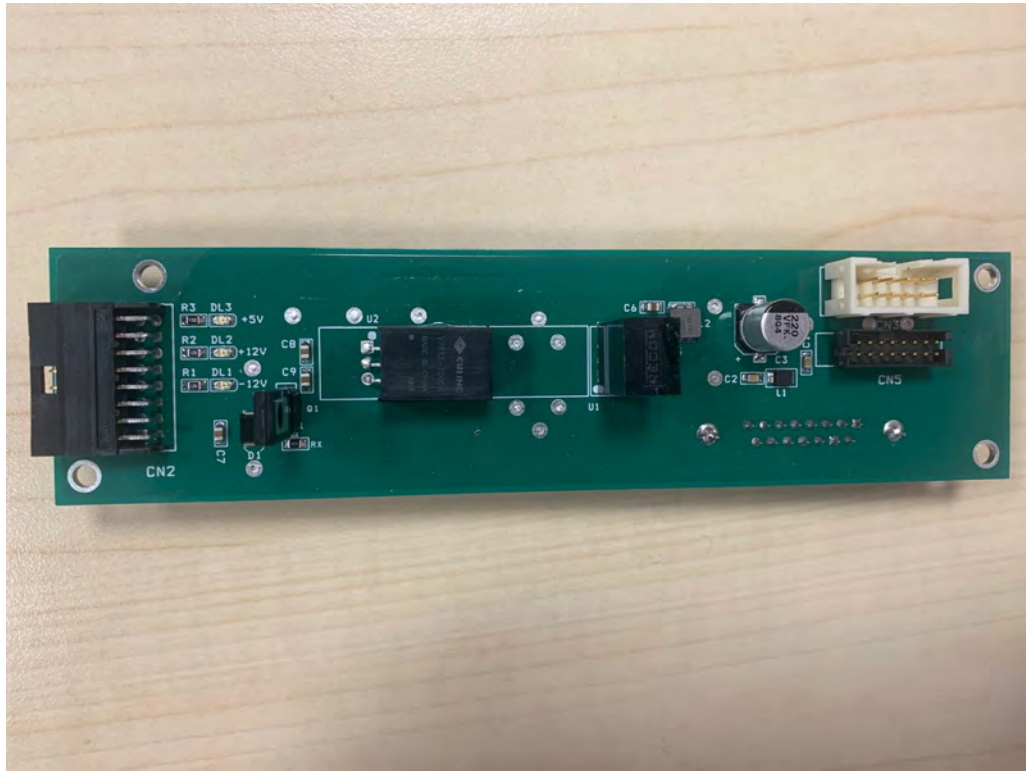
TG5K2A881-2 FRONT PANEL BOARD TOP



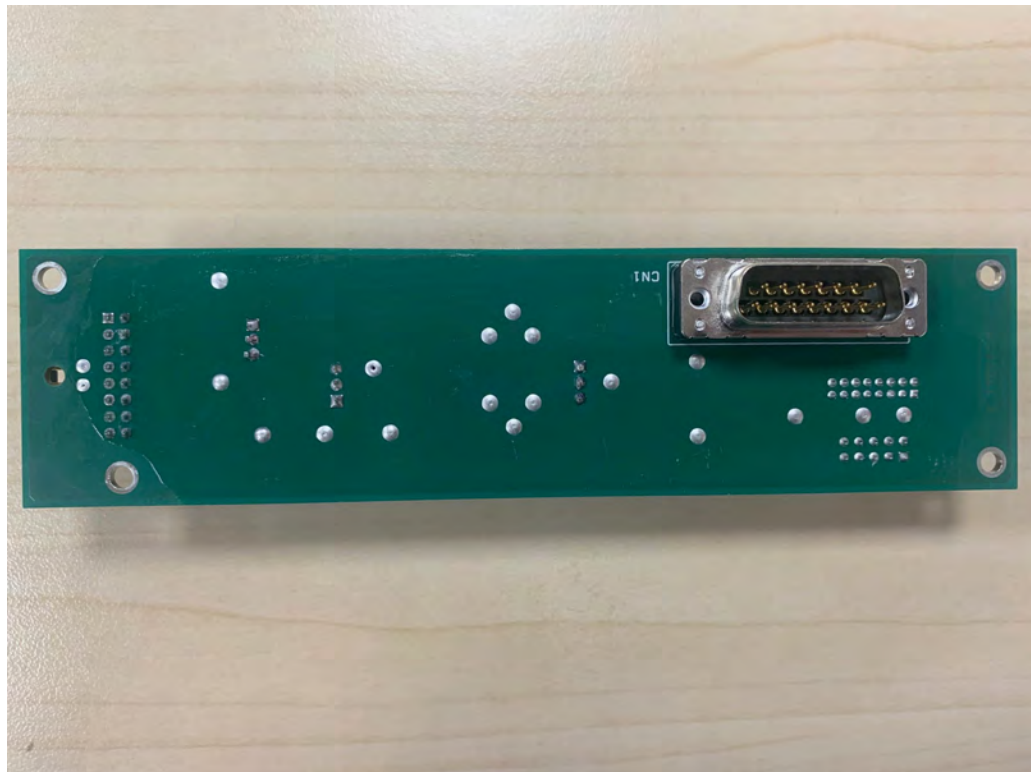
TG5K2A881-2 FRONT PANEL BOARD BOTTOM



TG5K3A881-3 CPU FITTING BOARD TOP



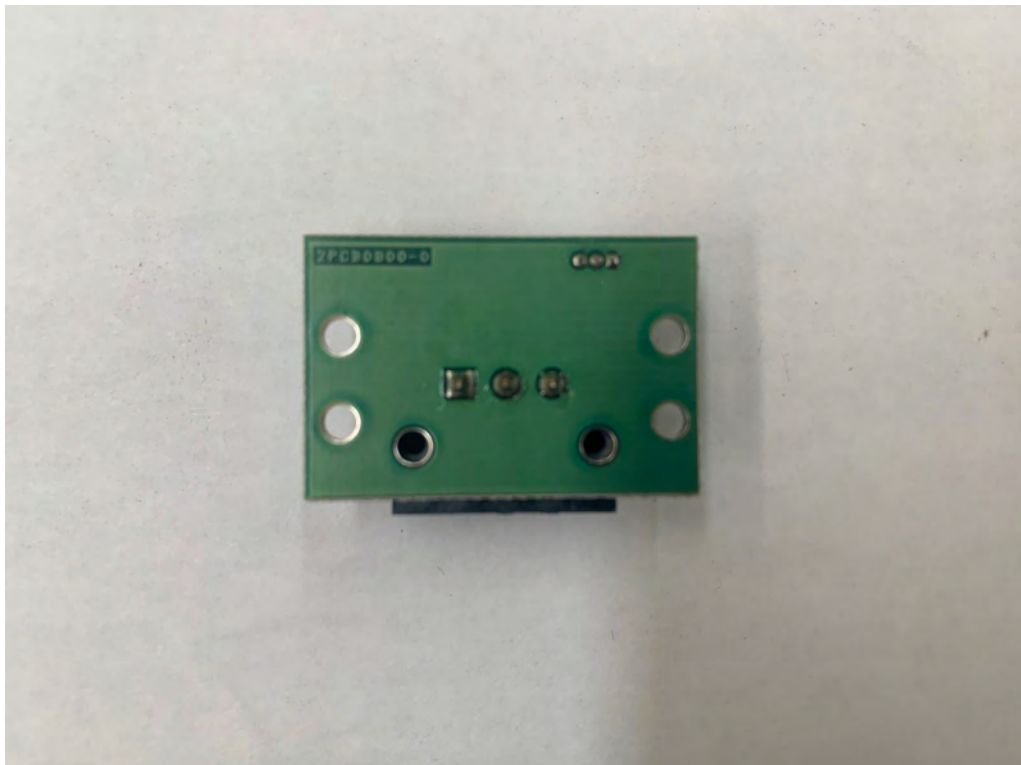
TG5K3A881-3 CPU FITTING BOARD BOTTOM



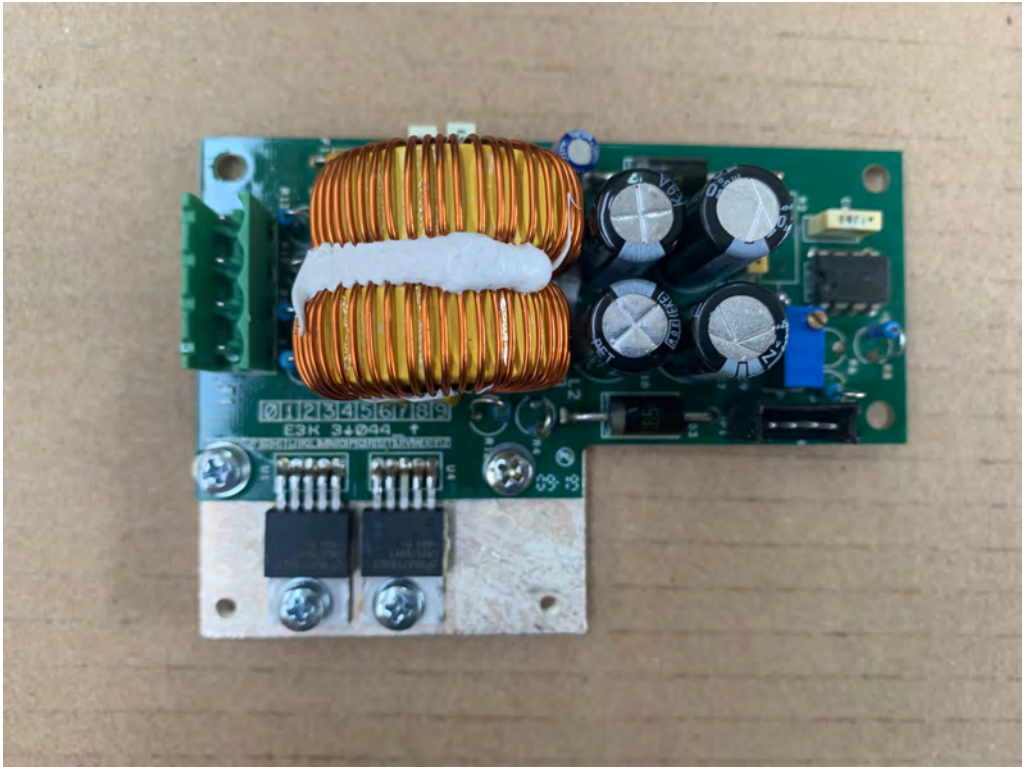
TG5K8A884-0 SEPARATE INTERLOCK BOARD TOP



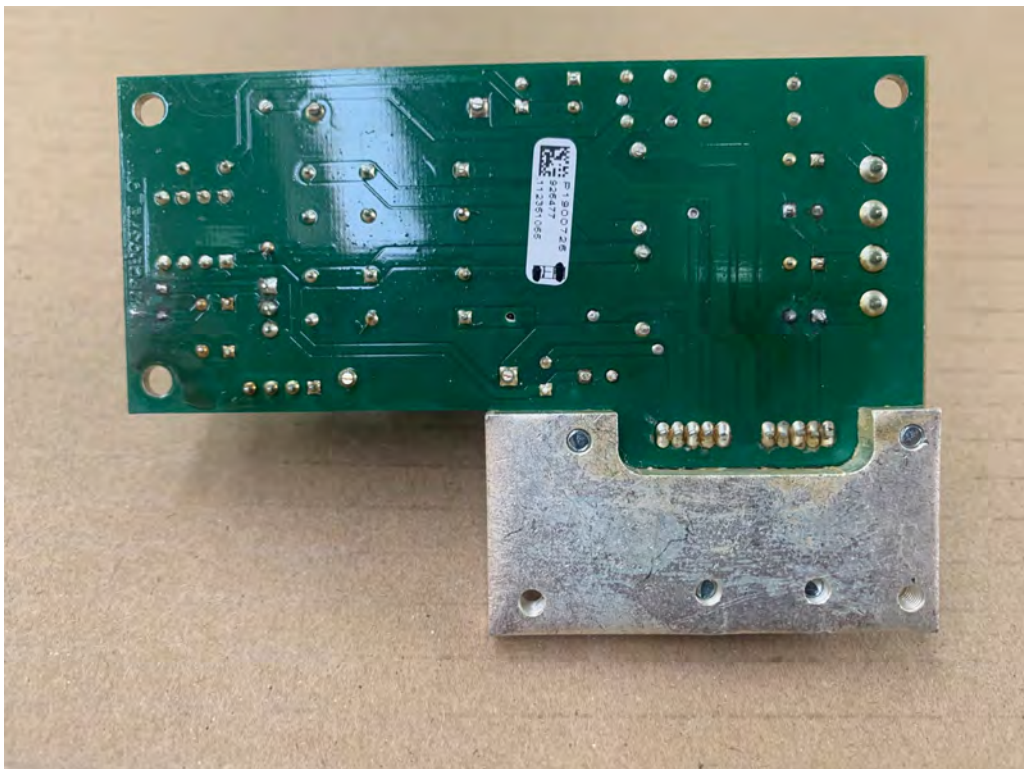
TG5K8A884-0 SEPARATE INTERLOCK BOARD BOTTOM



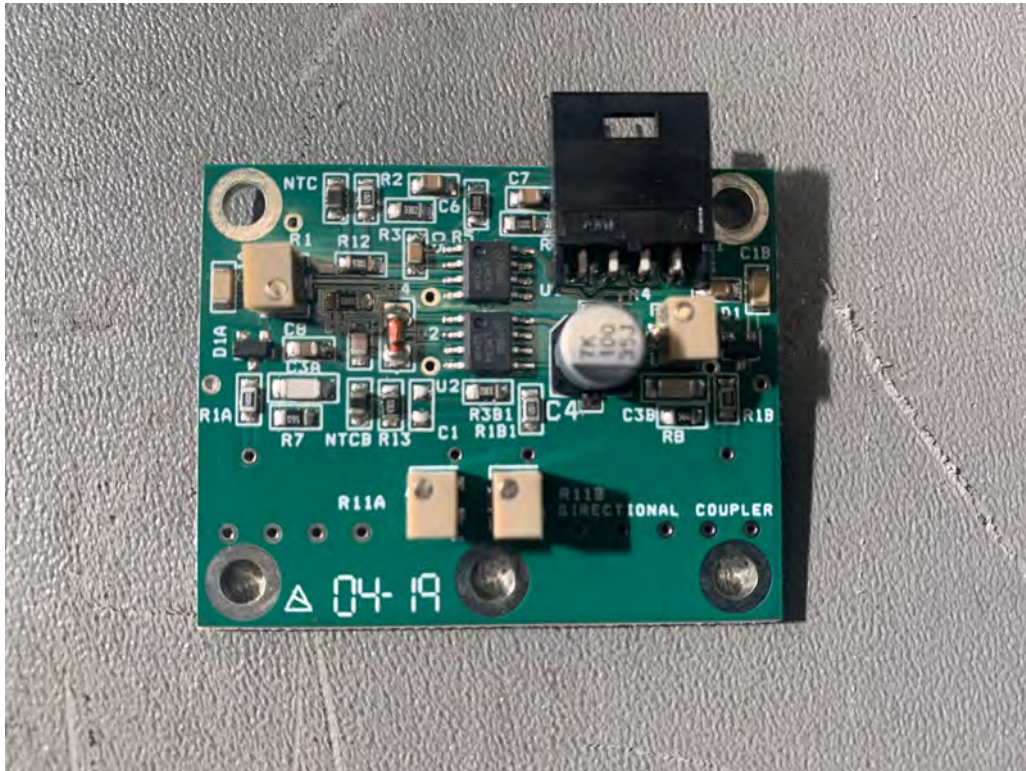
TG5KAA888-0 ANALOG DRIVER POWER SUPPLY BOARD TOP



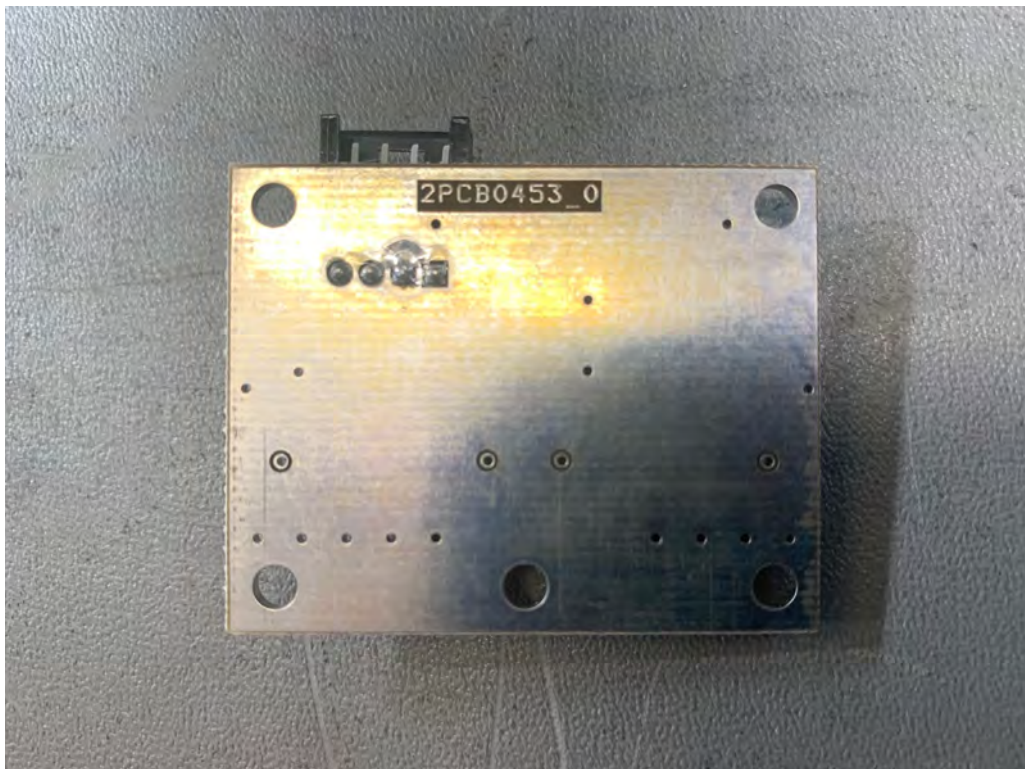
TG5KAA888-0 ANALOG DRIVER POWER SUPPLY BOARD BOTTOM



XNK 2A457-1 READING HEAD BOARD TOP



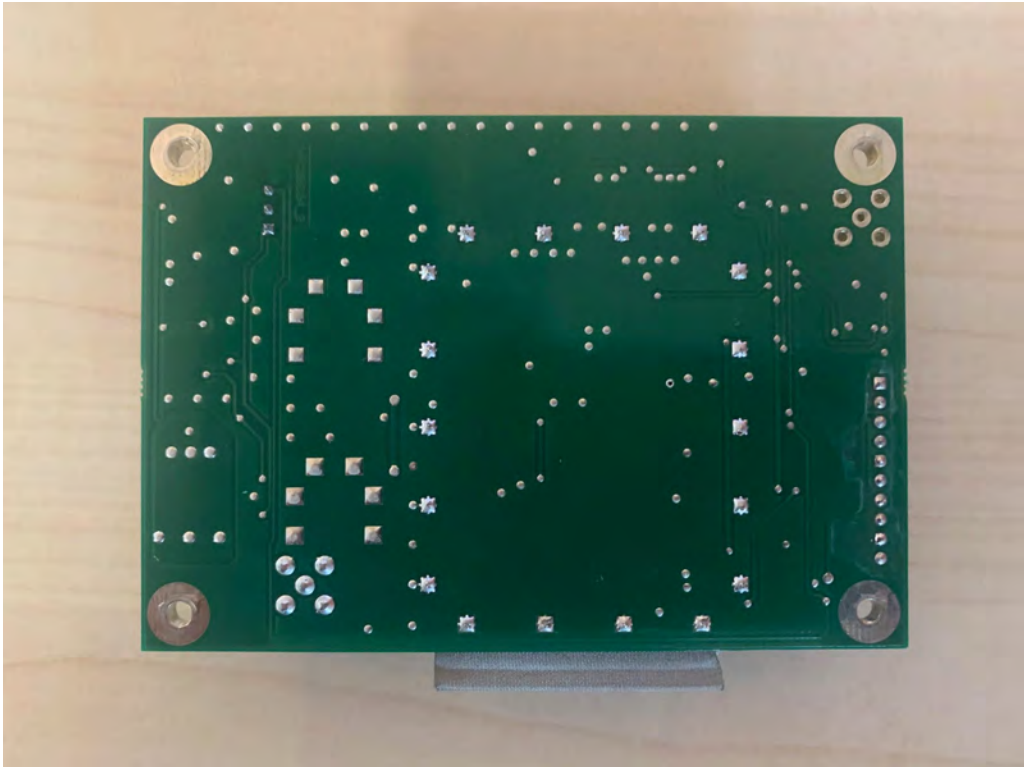
XNK 2A457-1 READING HEAD BOARD BOTTOM

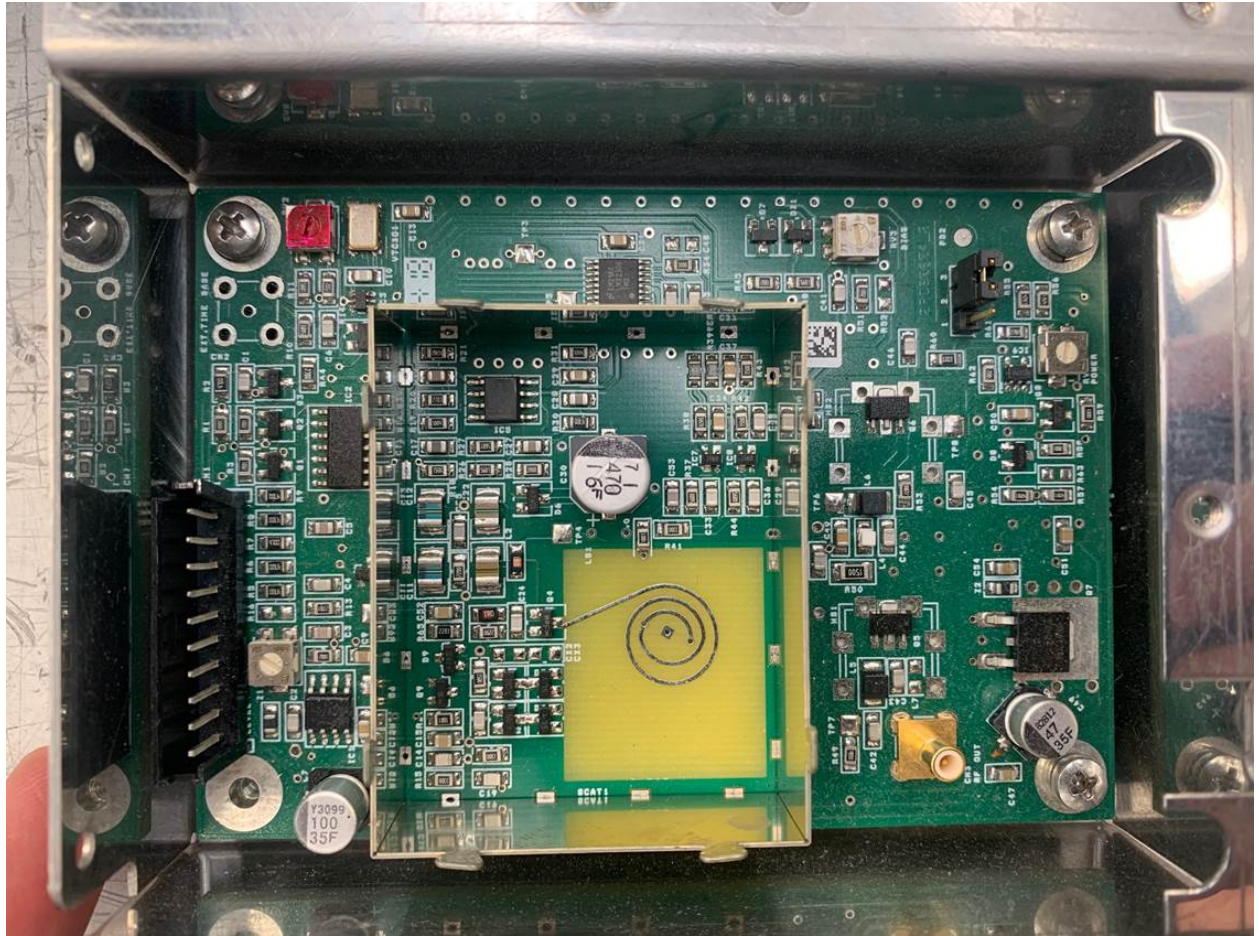


XNK AB451-2 VCO BOARD TOP



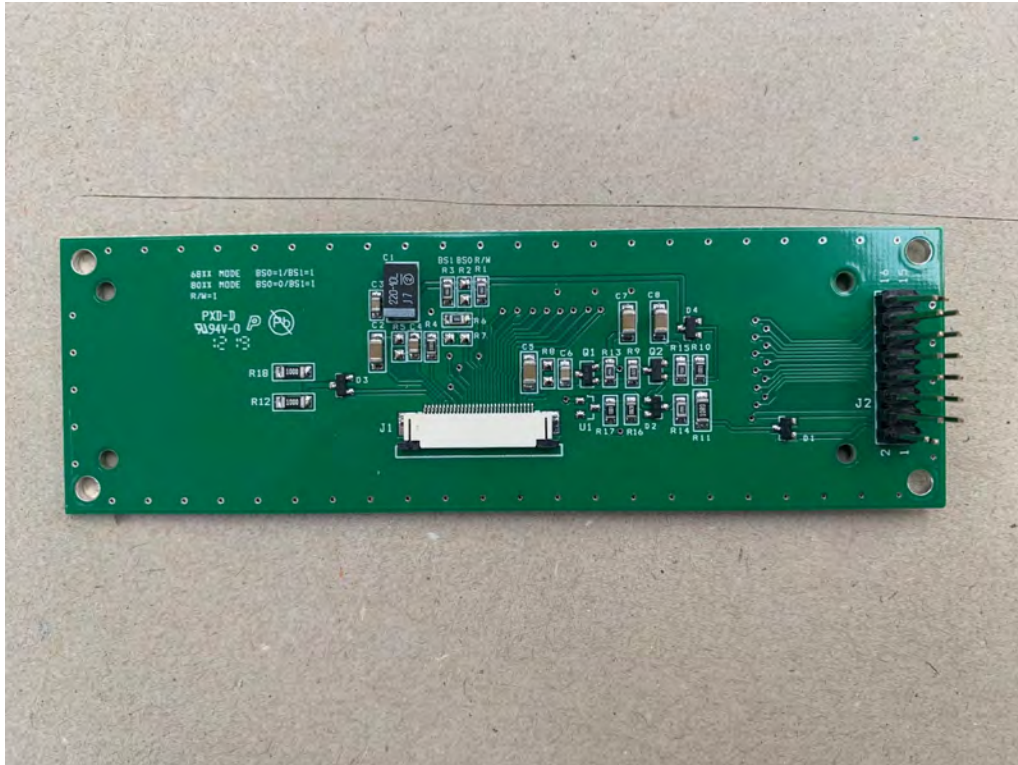
XNK AB451-2 VCO BOARD BOTTOM



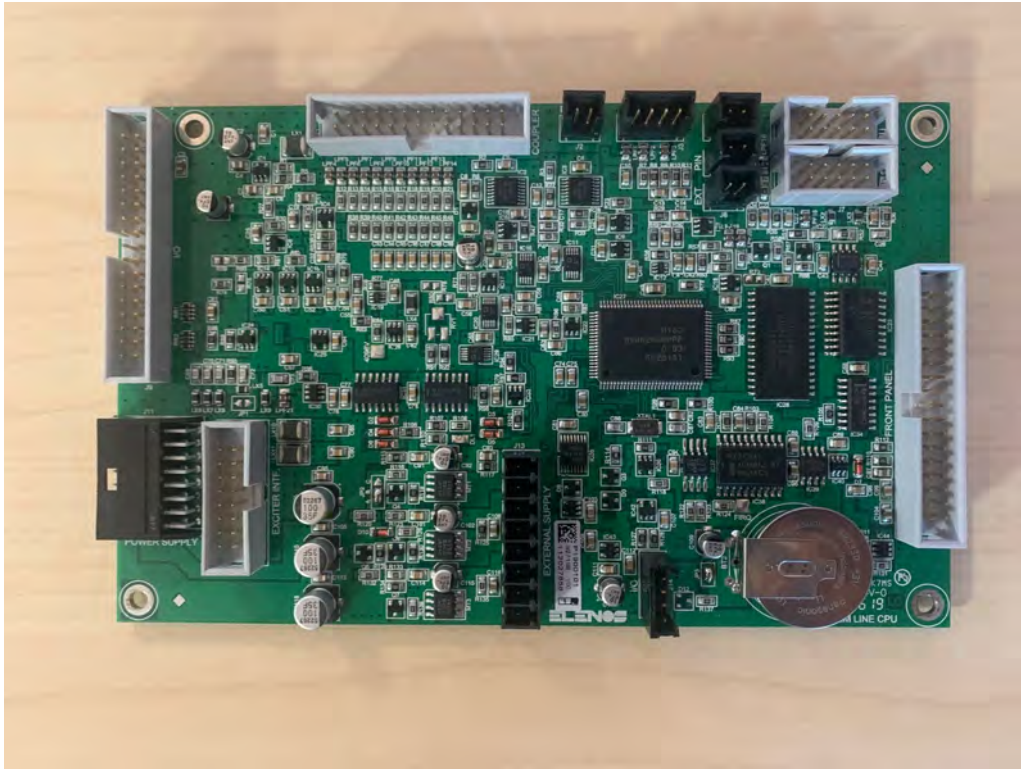


VCO BOARD – TOP VIEW – SHIELD REMOVED

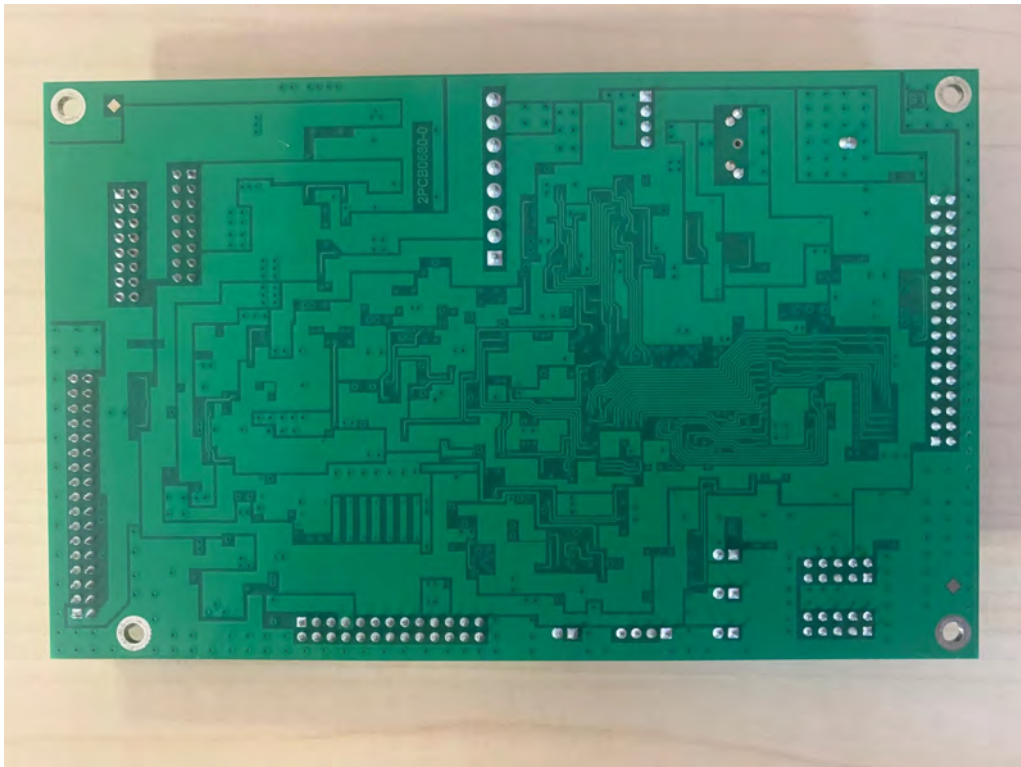
XNK BA452-0 OLED ADAPTER TOP



XNK ED453-0 CPU SLIM LINE BOARD TOP



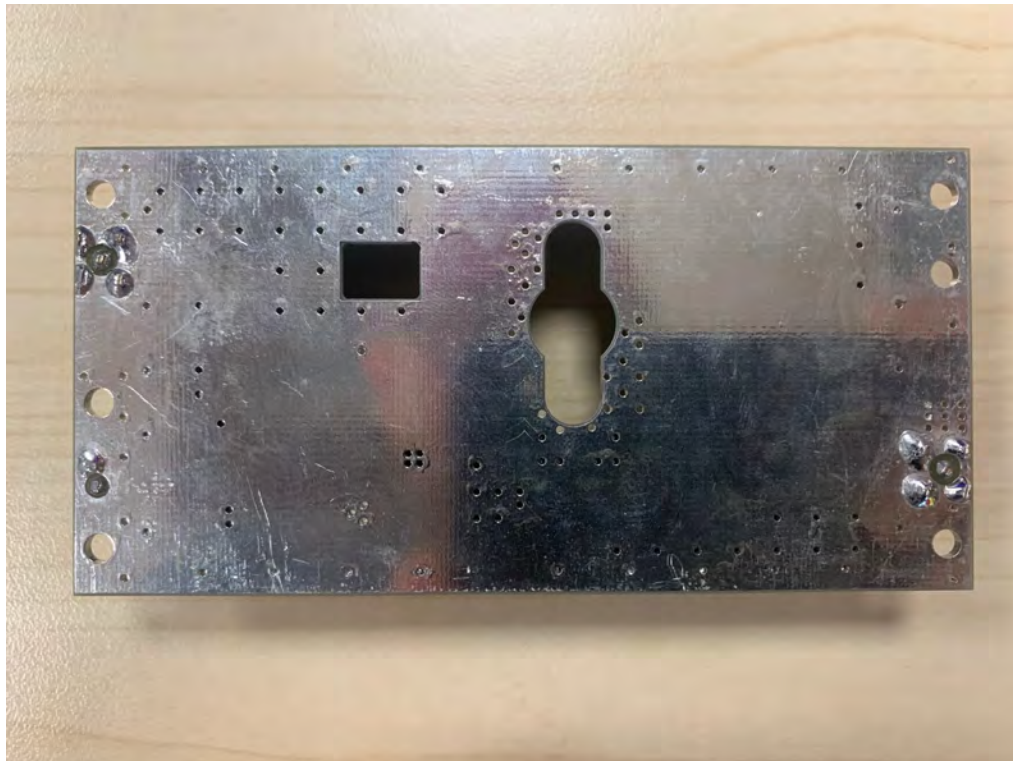
XNK ED453-0 CPU SLIM LINE BOARD BOTTOM



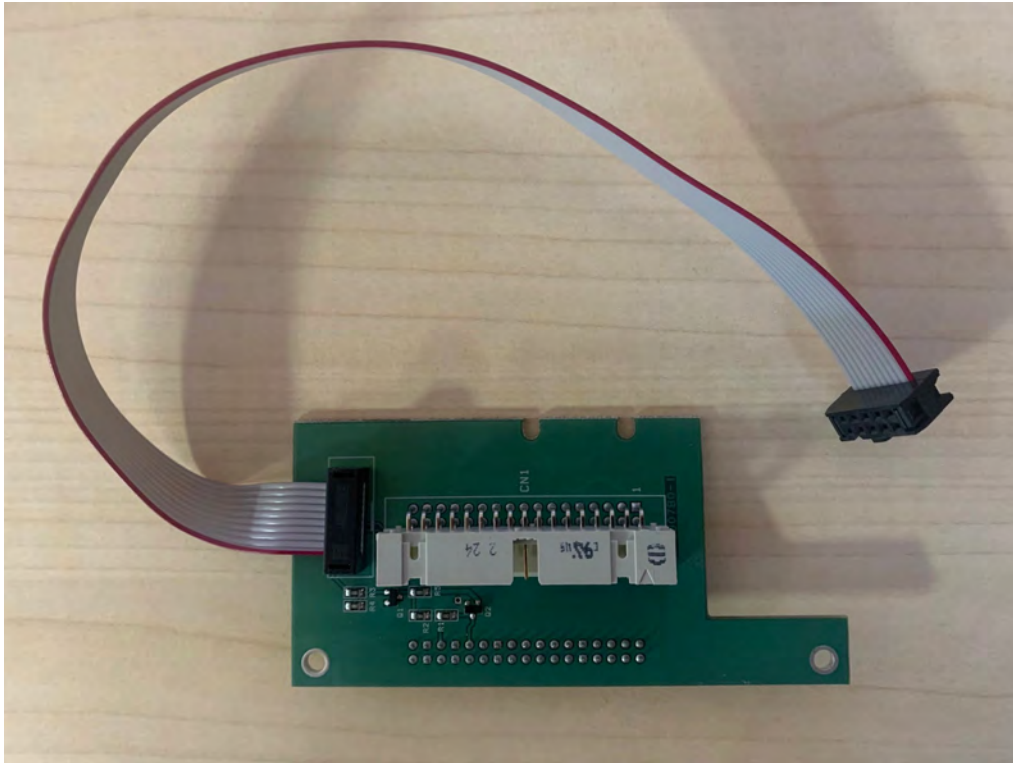
XNK GB454-5 DRIVER FOR MRF171A TOP



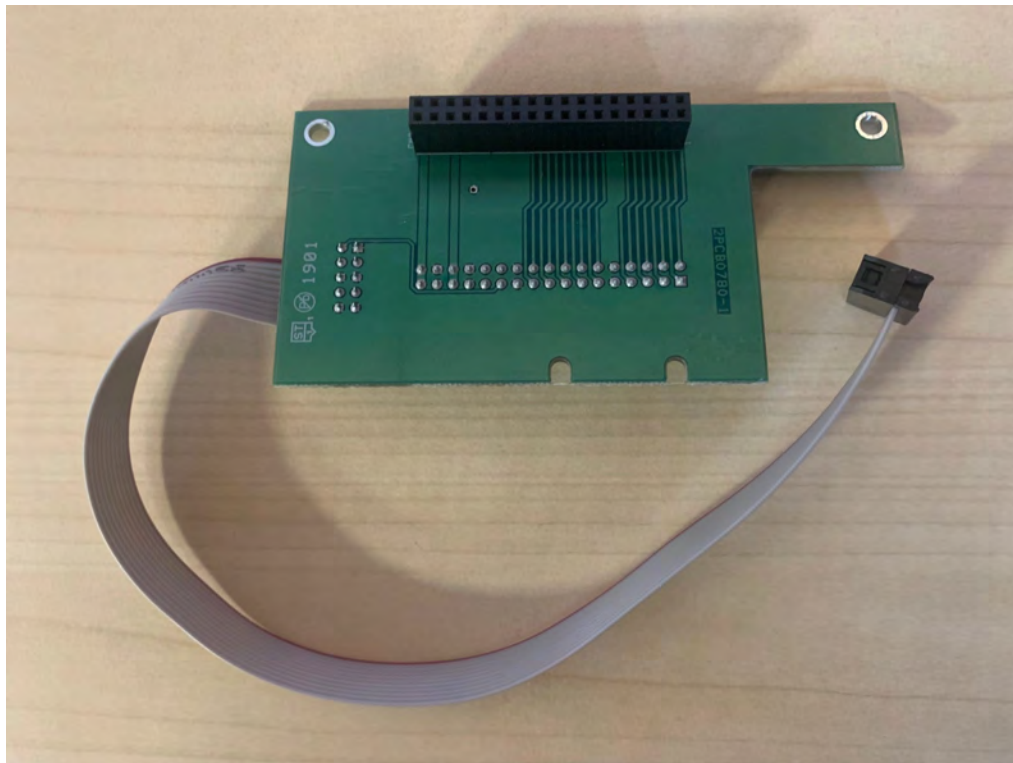
XNK GB454-5 DRIVER FOR MRF171A BOTTOM



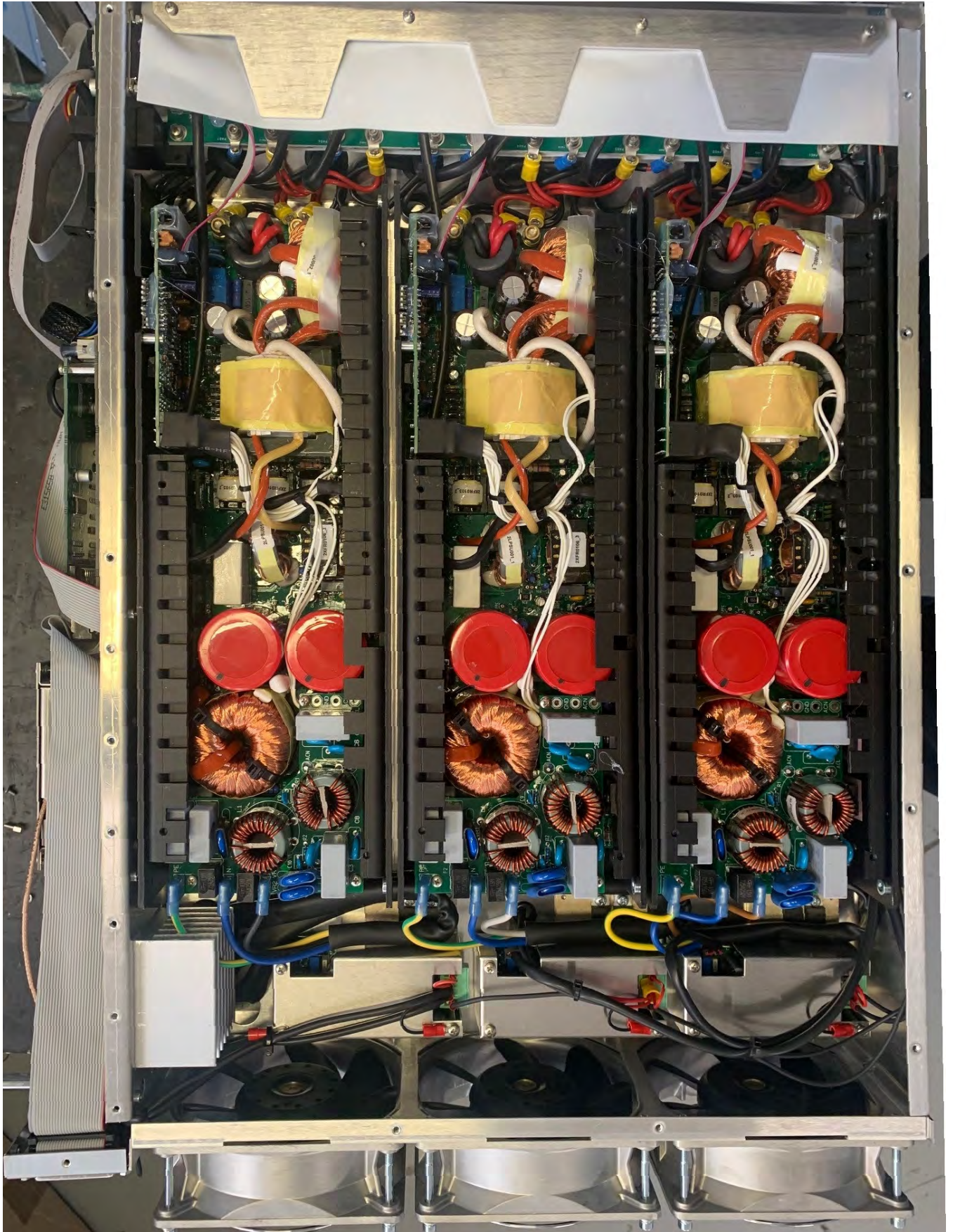
XNK PA456-1 PGM AND SERIAL CONNECTION TOP



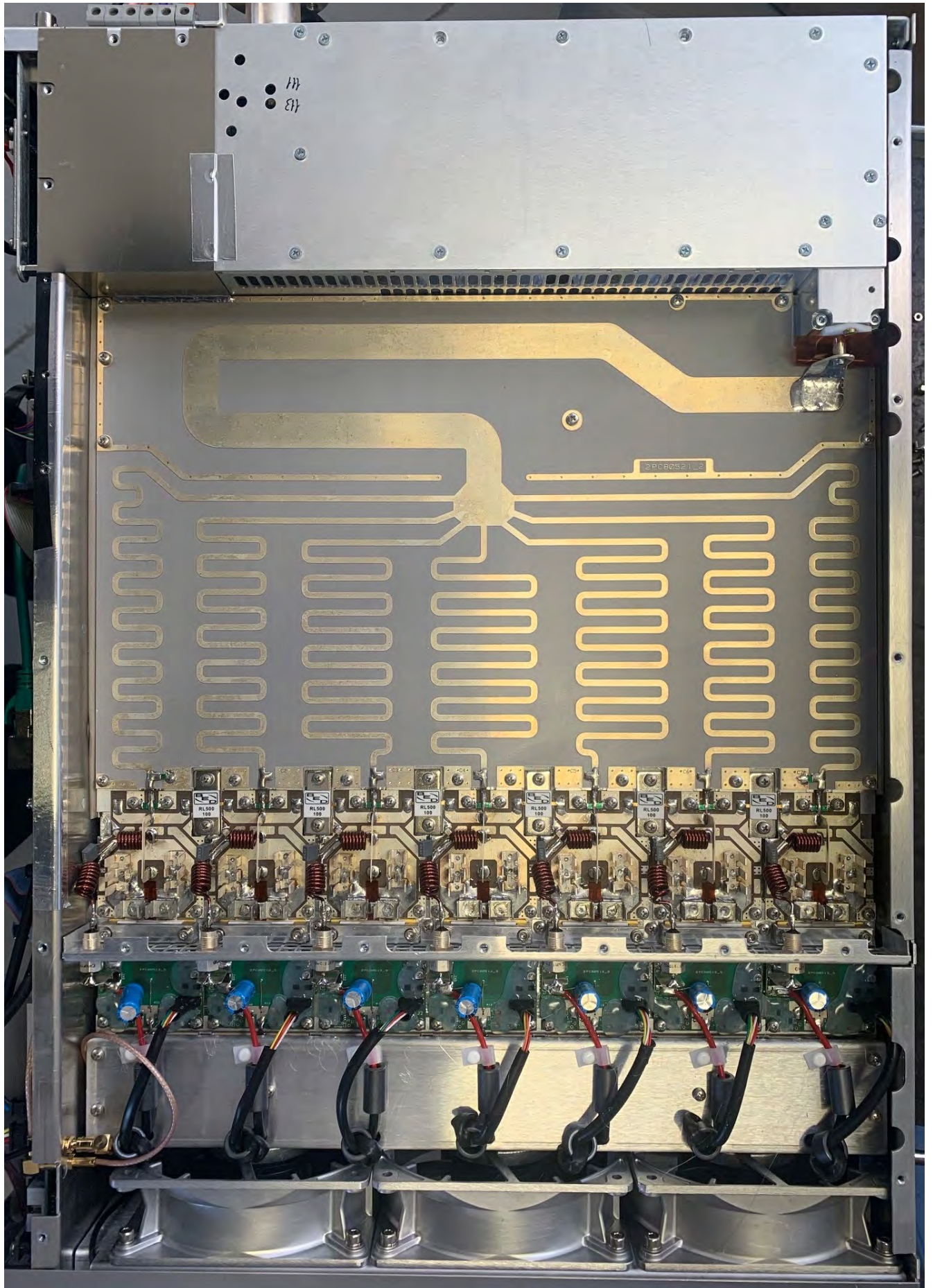
XNK PA456-1 PGM AND SERIAL CONNECTION BOTTOM



ETG5000 TOP VIEW



ETG5000 BOTTOM VIEW



ETG5000 RIGHT SIDE VIEW

