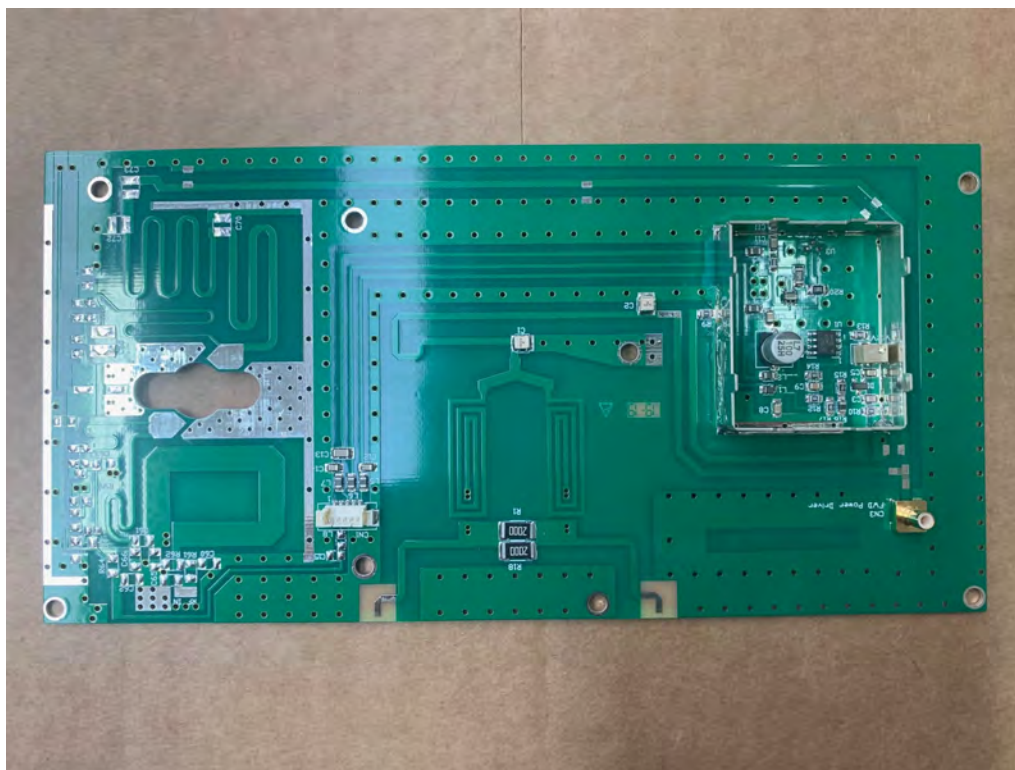
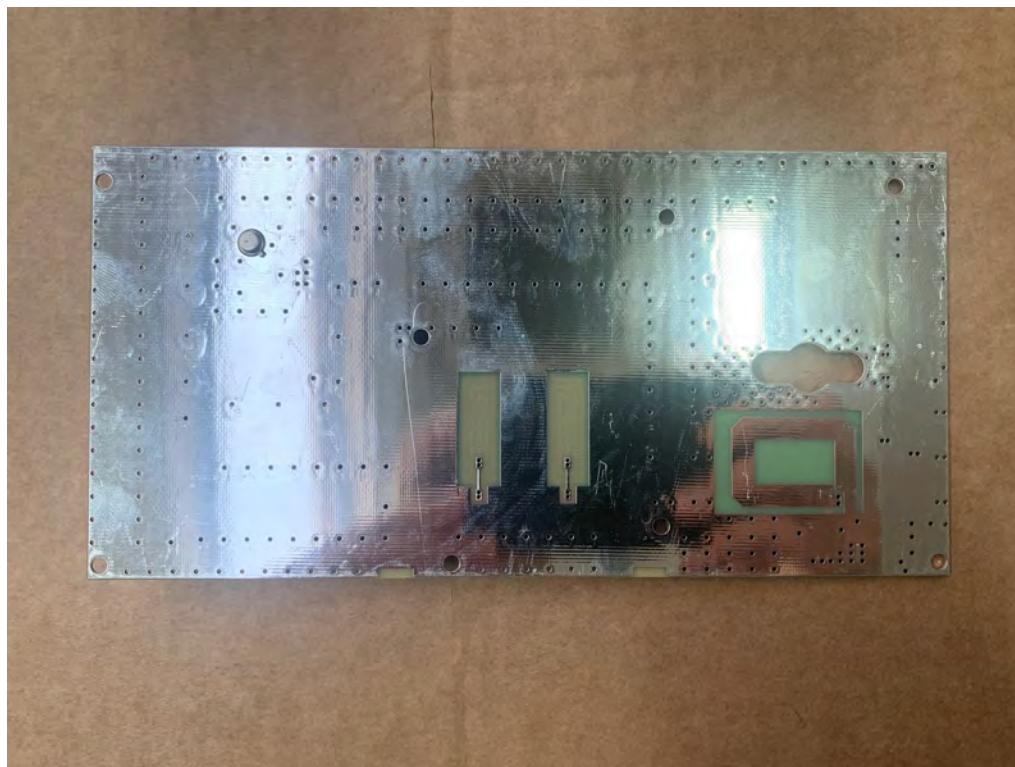


2U3K4B282-2 LOW-PASS FILTER TOP



2U3K4B282-2 LOW-PASS FILTER BOTTOM

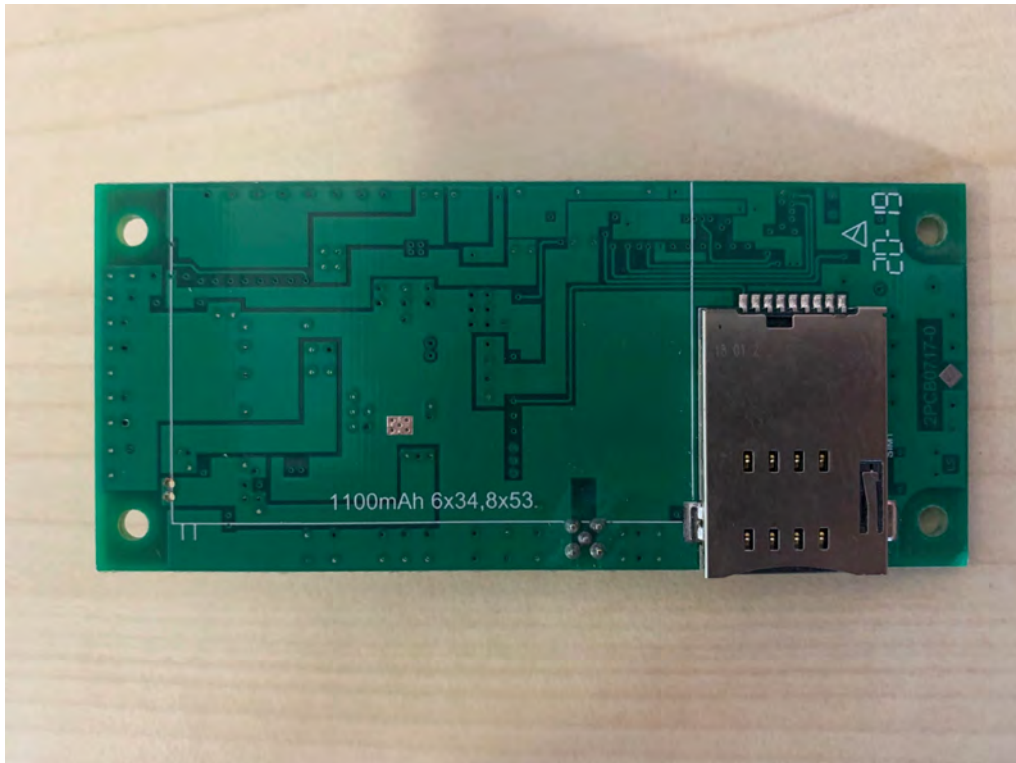




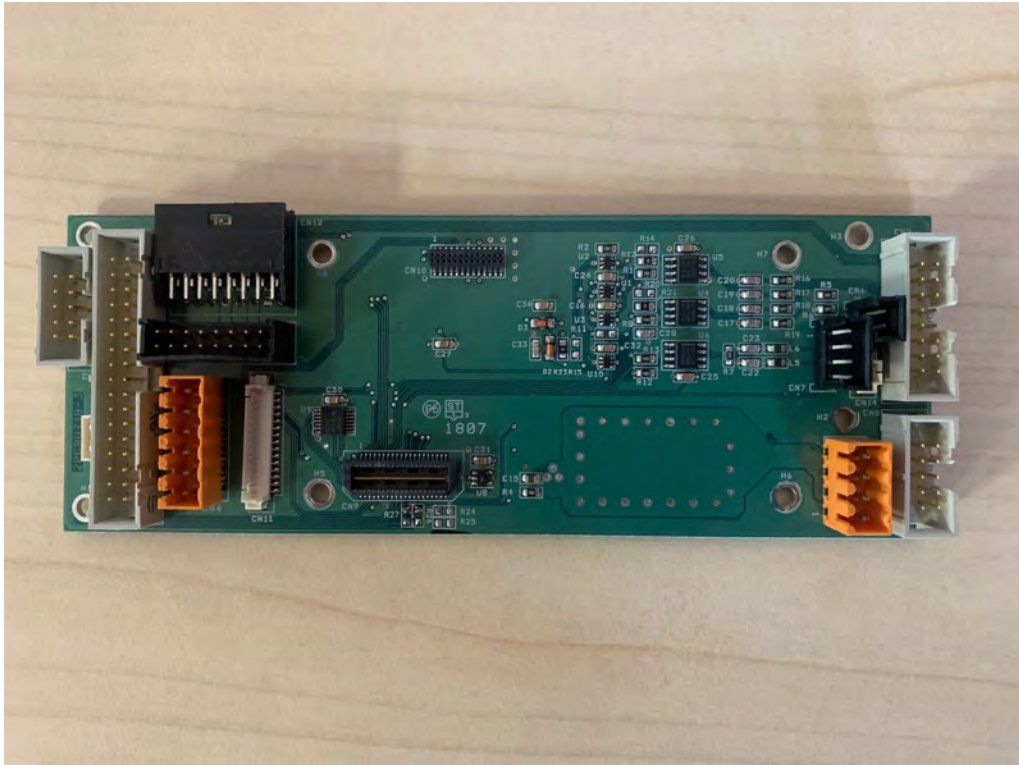
2U3KIA284-0 MODEM TOP



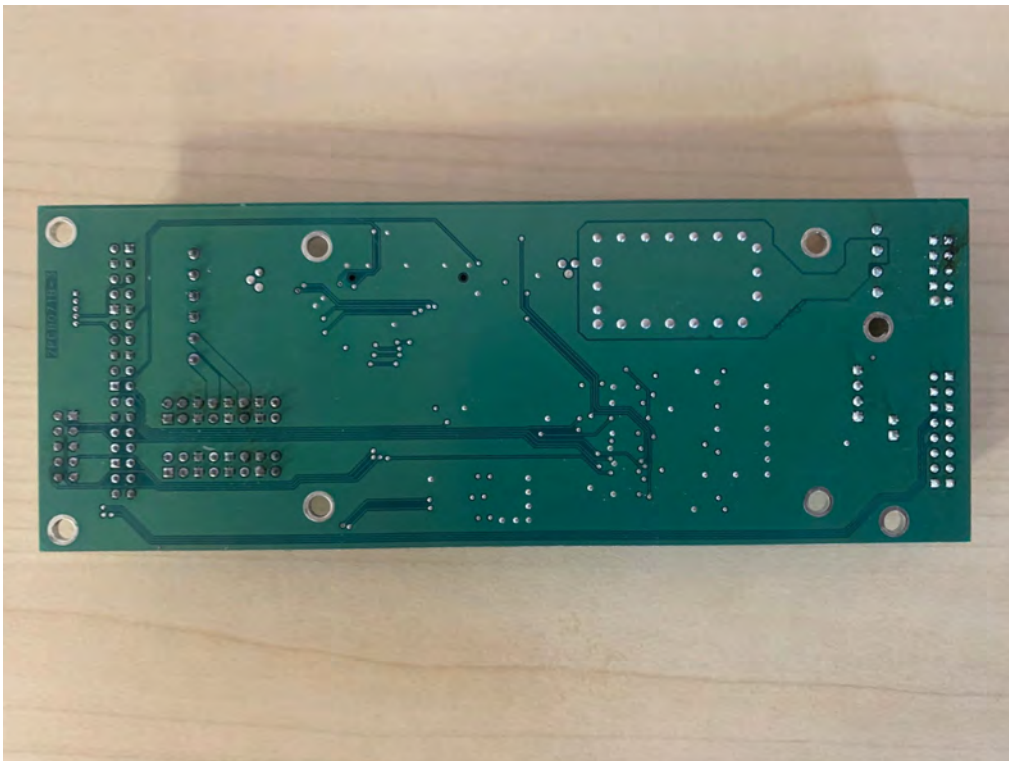
2U3KIA284-0 MODEM BOTTOM



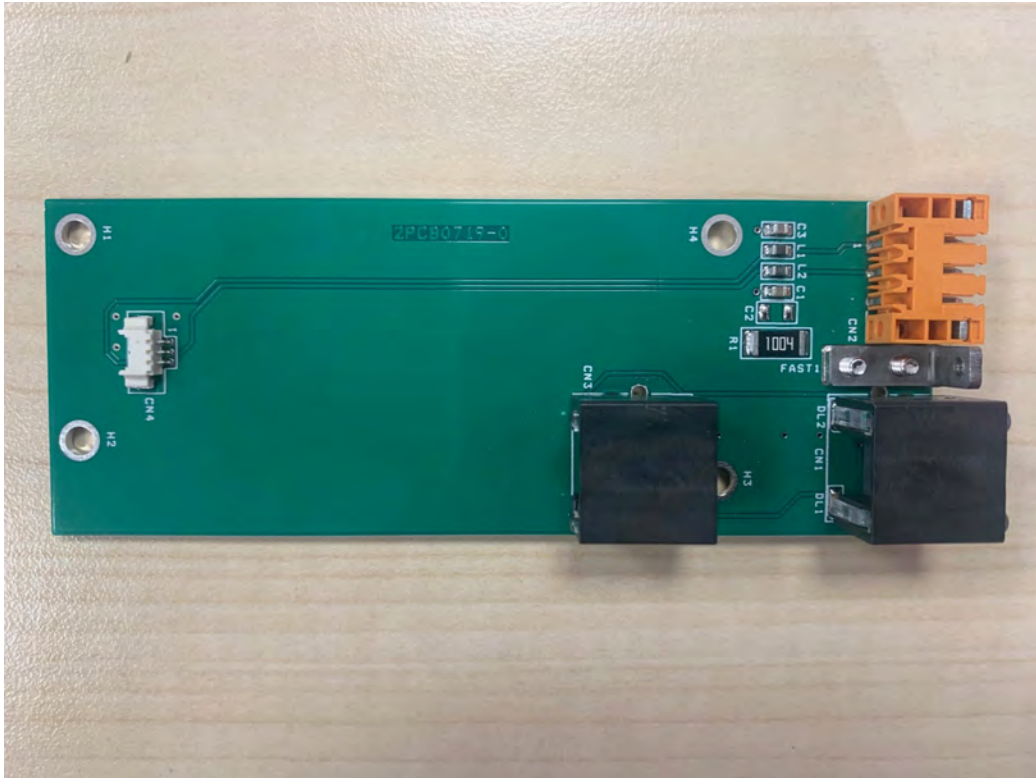
2U3KLA284-2 AUX BOARD TOP



2U3KLA284-2 AUX BOARD BOTTOM



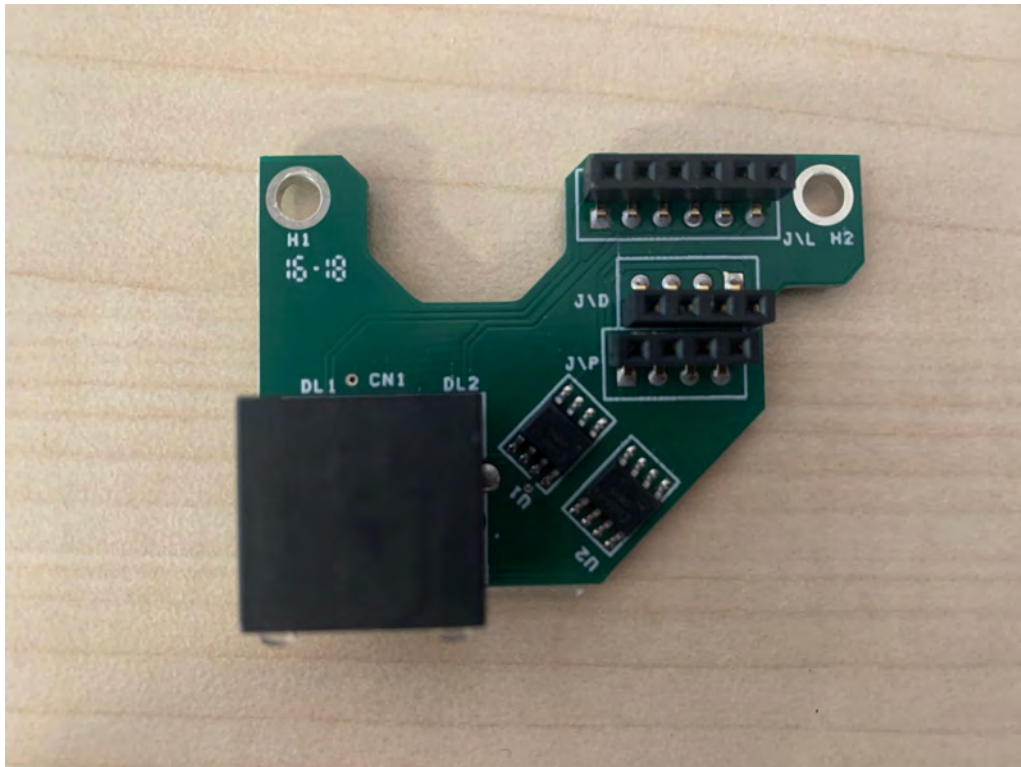
2U3KMA284-0 ETHERNET BOARD TOP



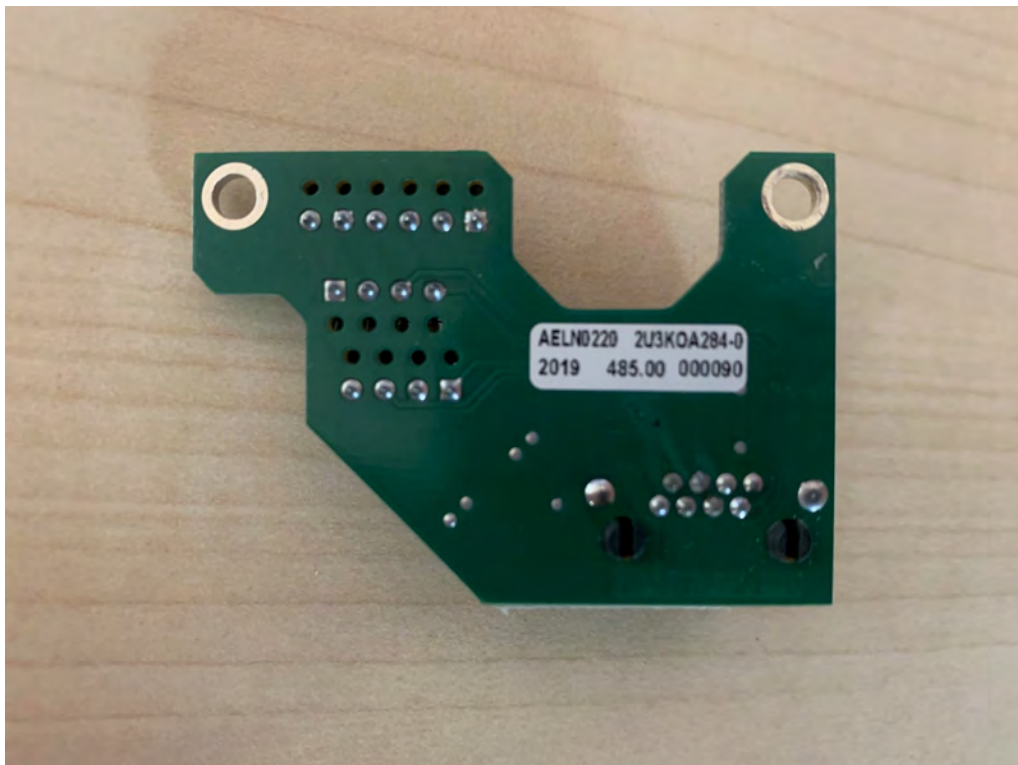
2U3KMA284-0 ETHERNET BOARD BOTTOM



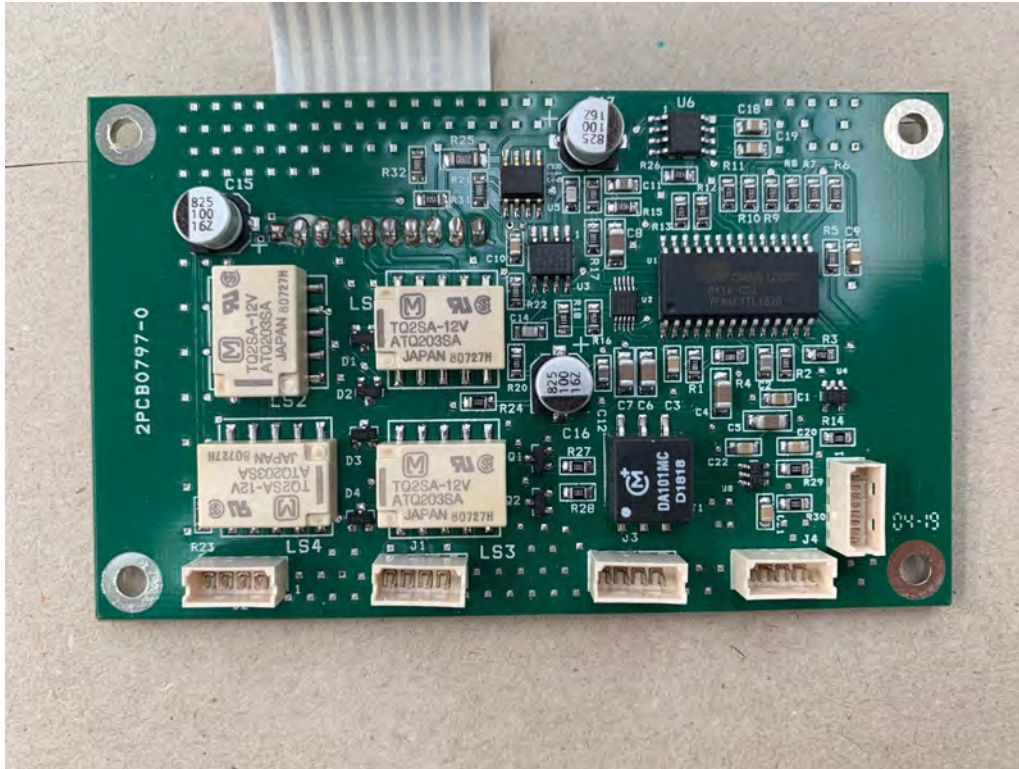
2U3KOA284-0 PIGGY BOARD TOP



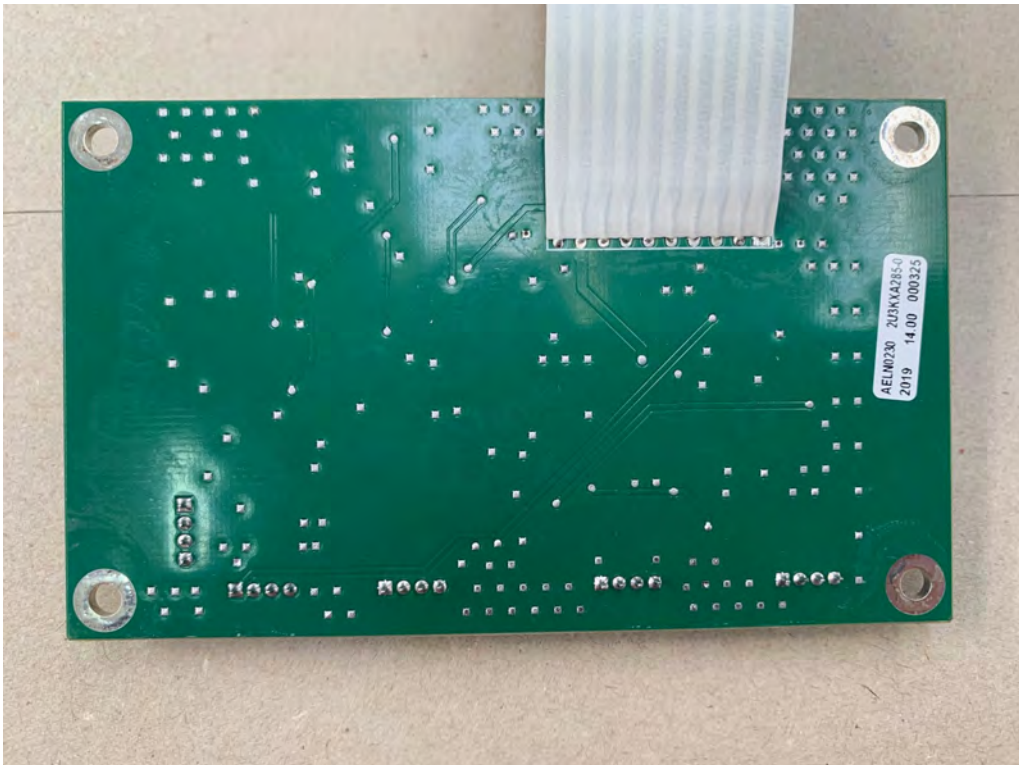
2U3KOA284-0 PIGGY BOARD BOTTOM



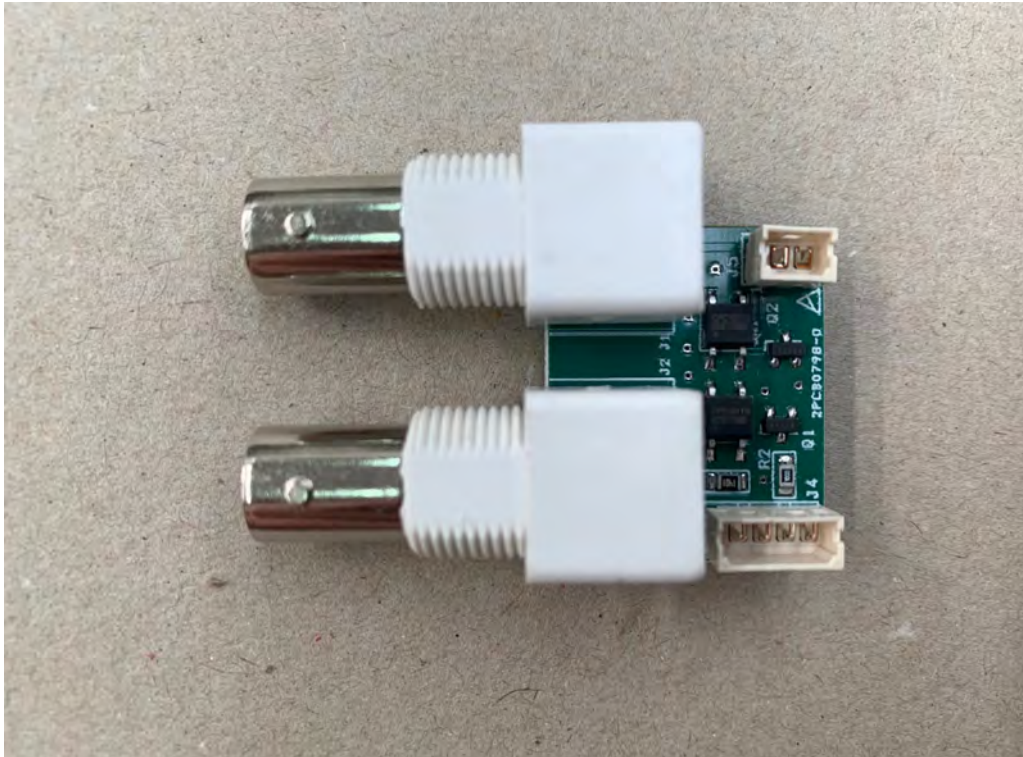
2U3KXA285-0 XLR/MPX COMMUTER TOP



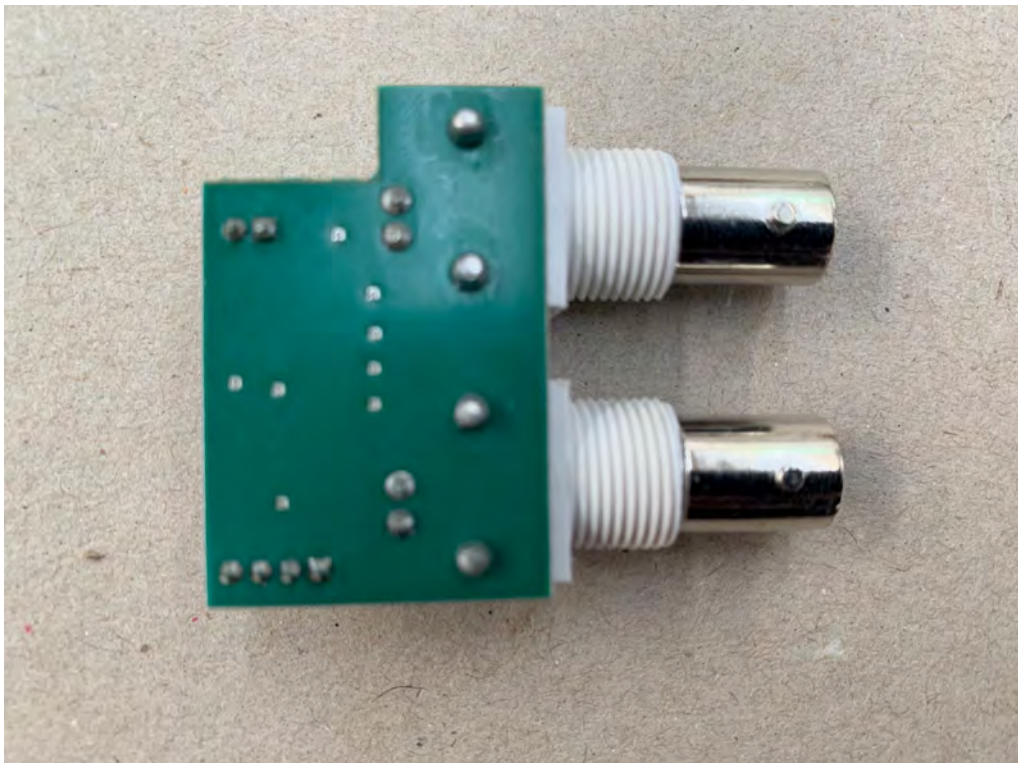
2U3KXA285-0 XLR/MPX COMMUTER BOTTOM



2U3KYA285-0 CMPX CONNECTION BOARD TOP

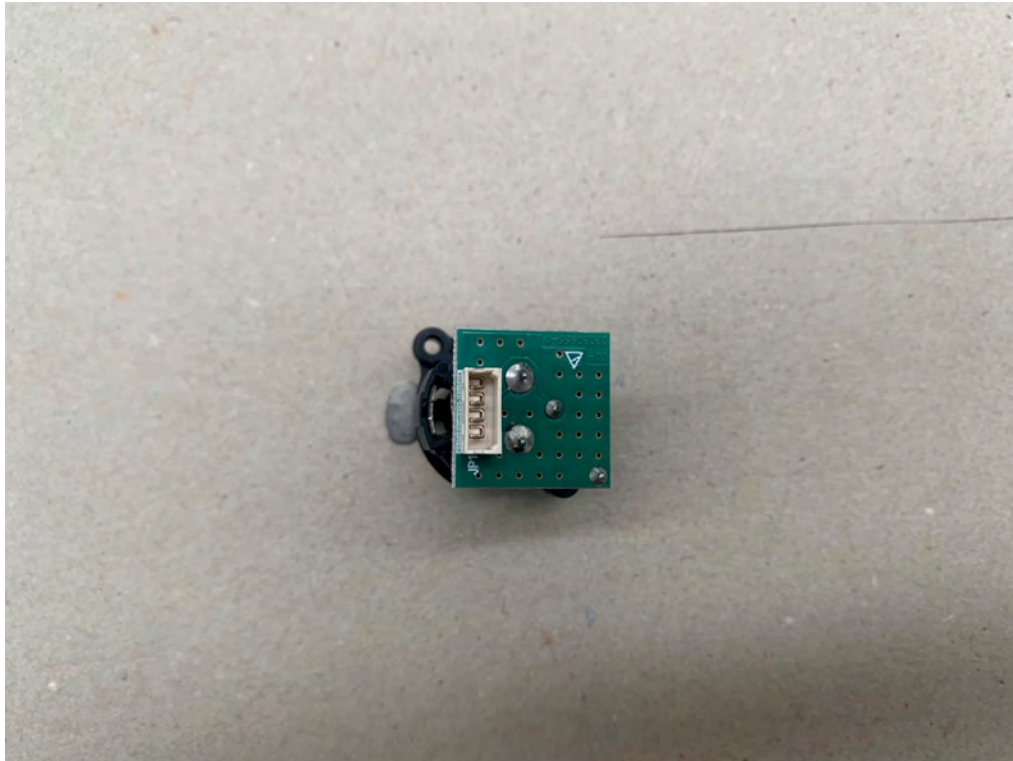


2U3KYA285-0 CMPX CONNECTION BOARD BOTTOM

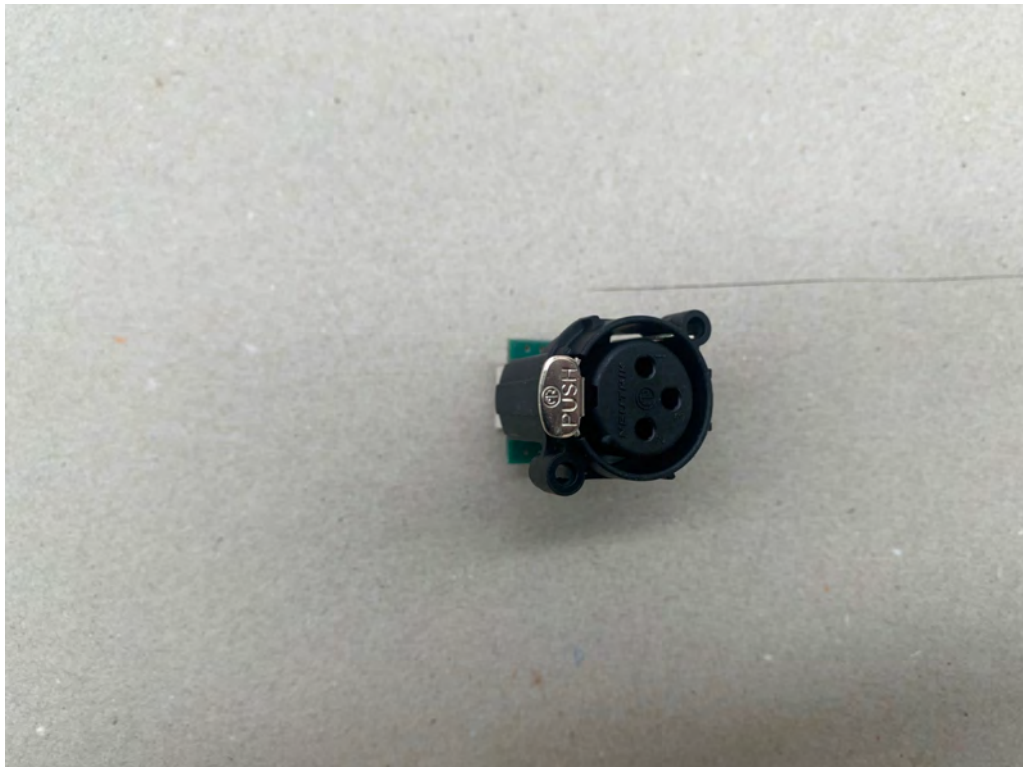




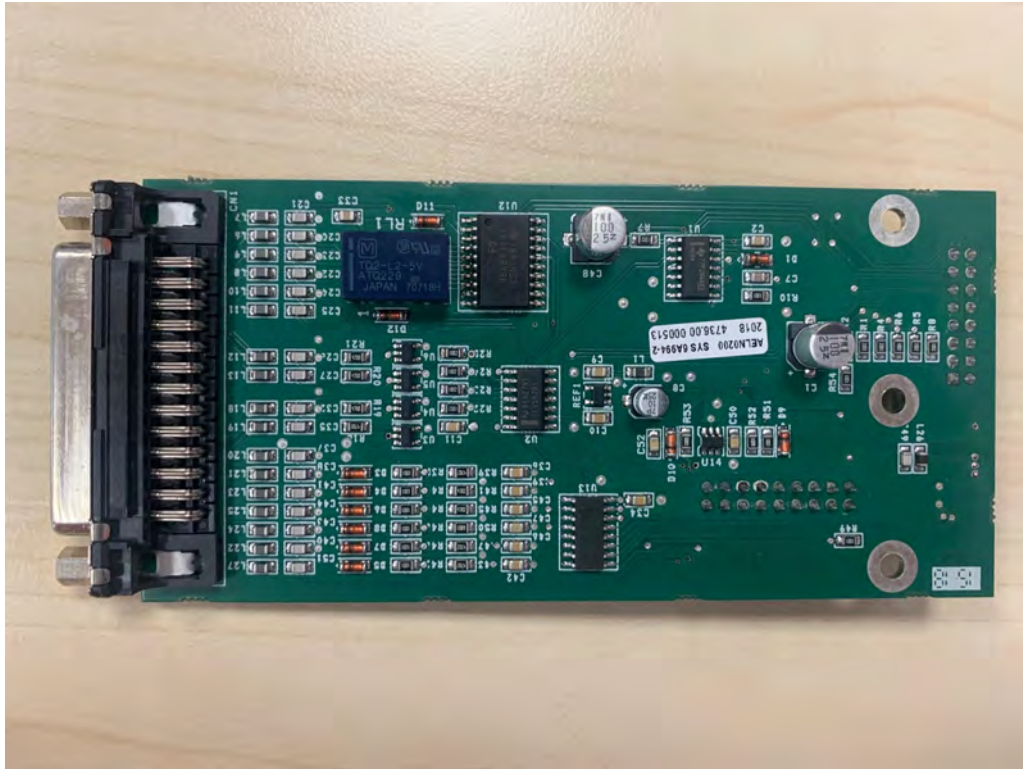
DRM 5A972-0 XLR ADAPTER TOP



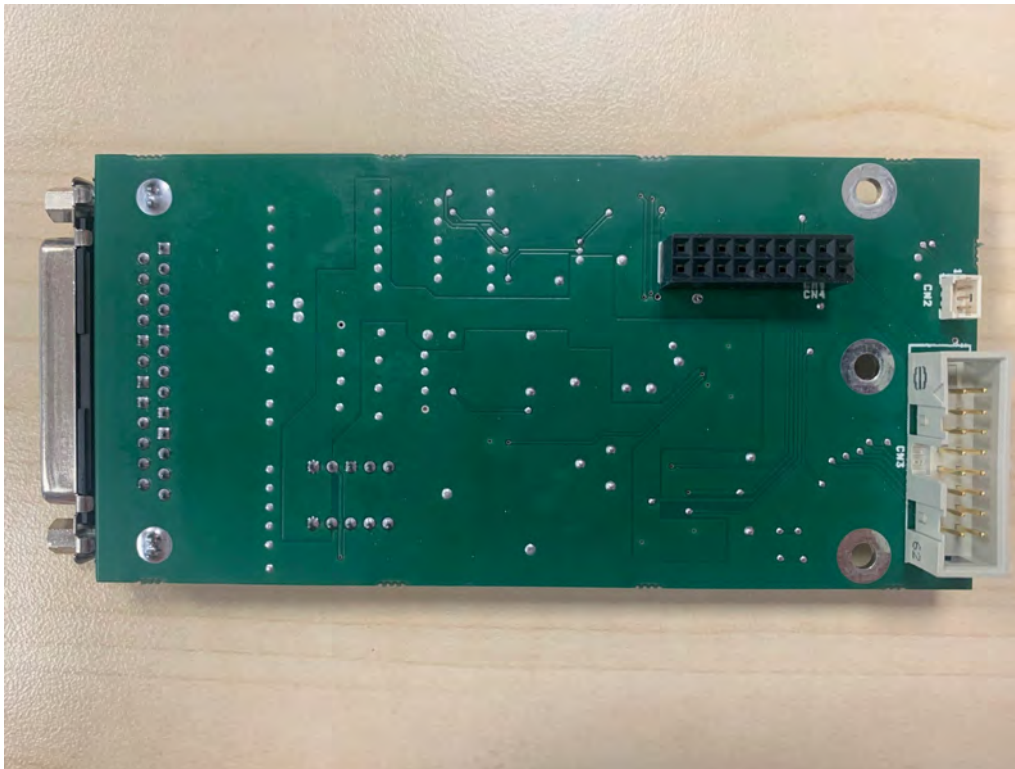
DRM 5A972-0 XLR ADAPTER BOTTOM



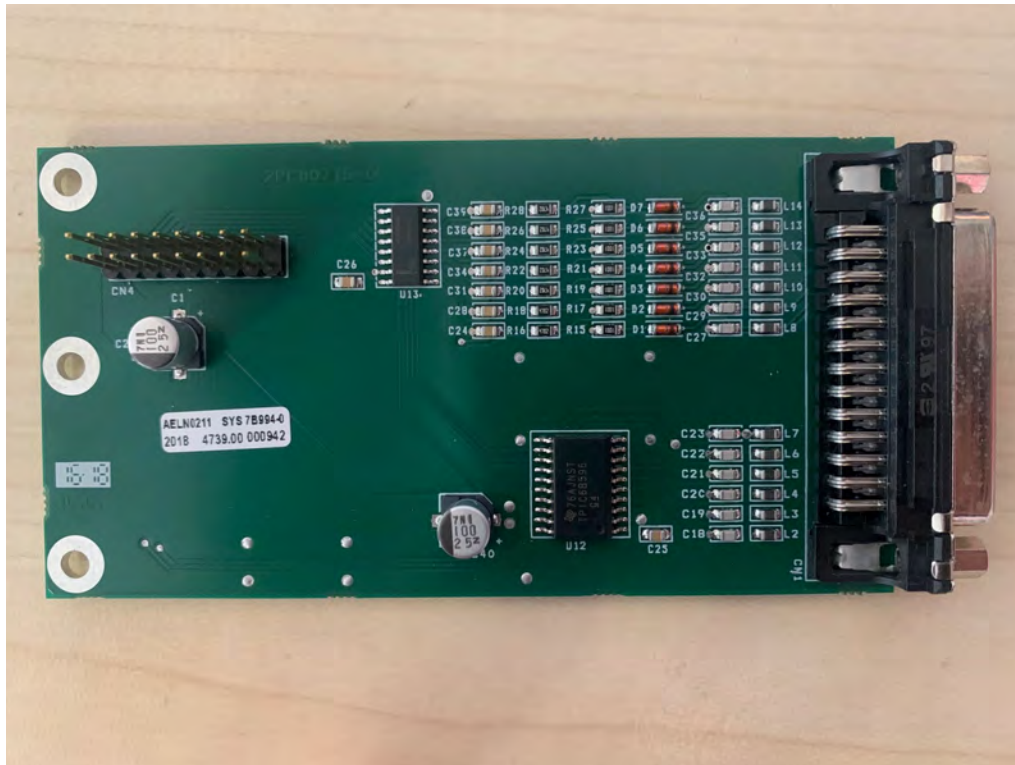
SYS 6A994-2TC/TS BOARD TOP



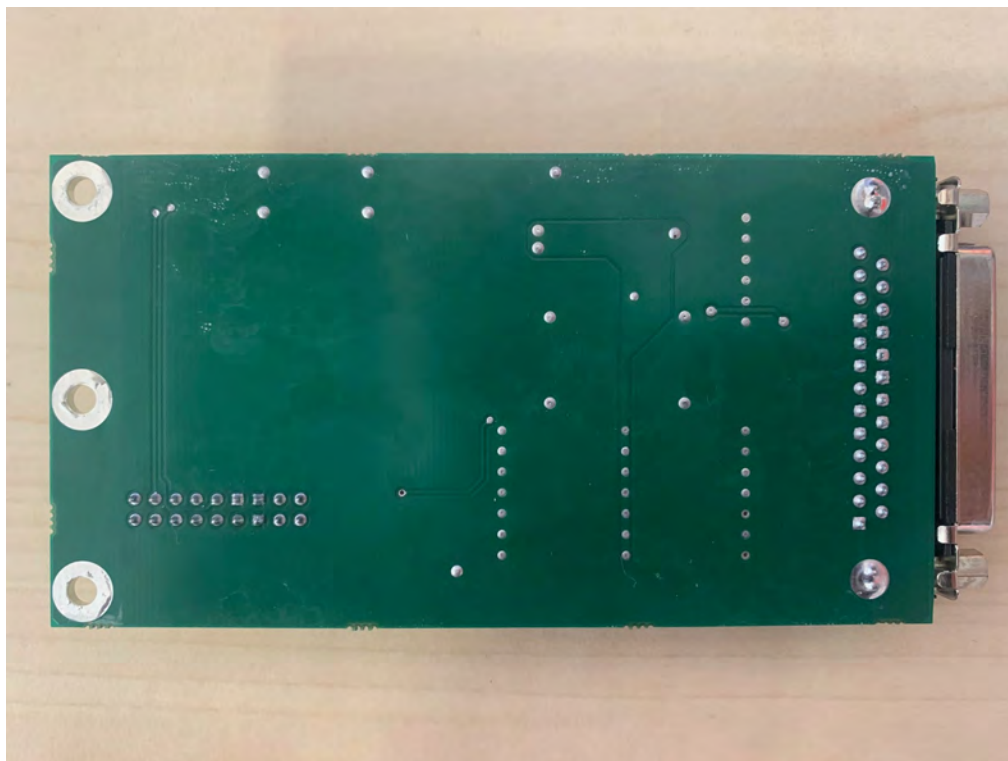
SYS 6A994-2TC/TS BOARD BOTTOM



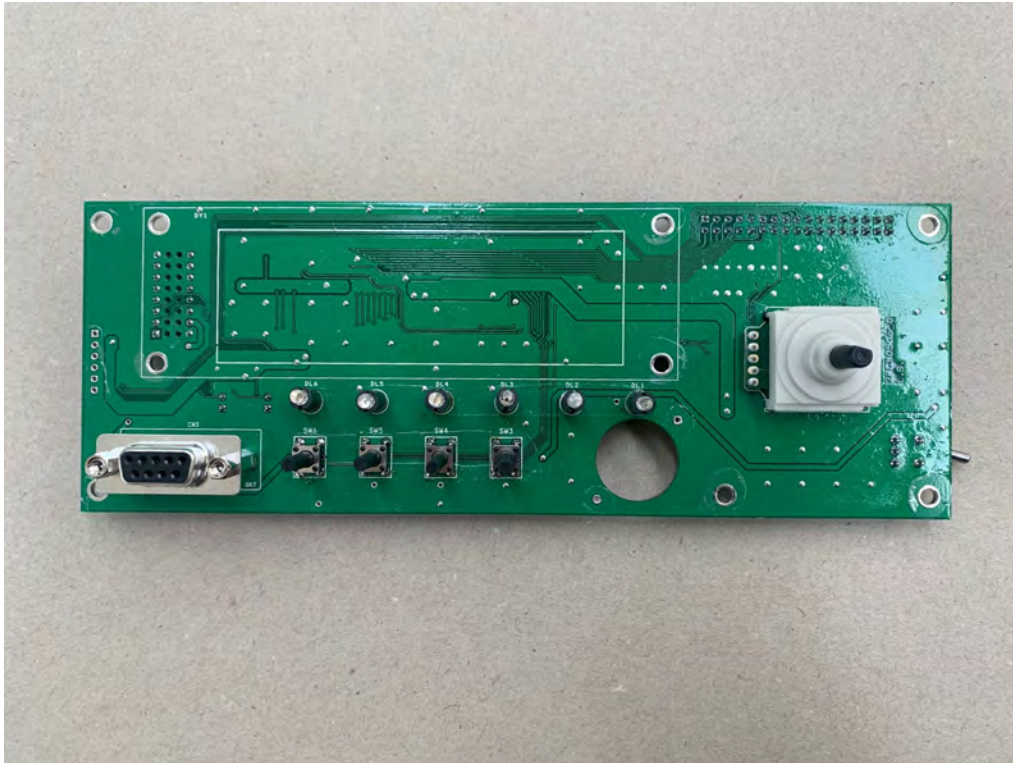
SYS 7B994-0 PROFILES BOARD TOP



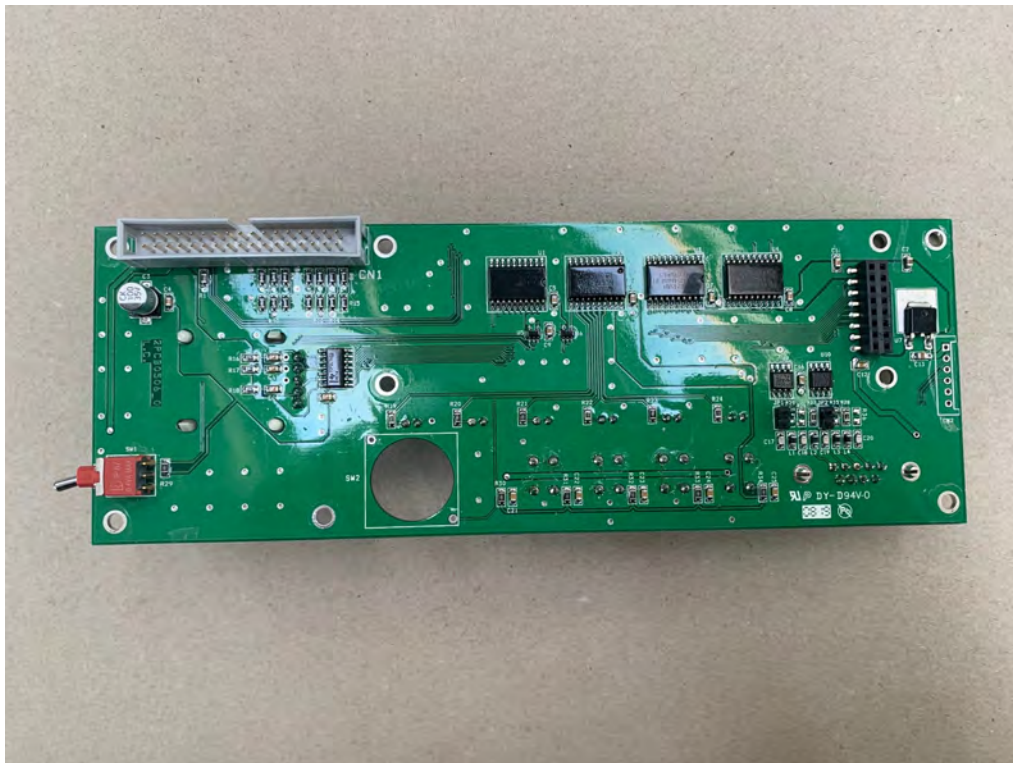
SYS 7B994-0 PROFILES BOARD BOTTOM



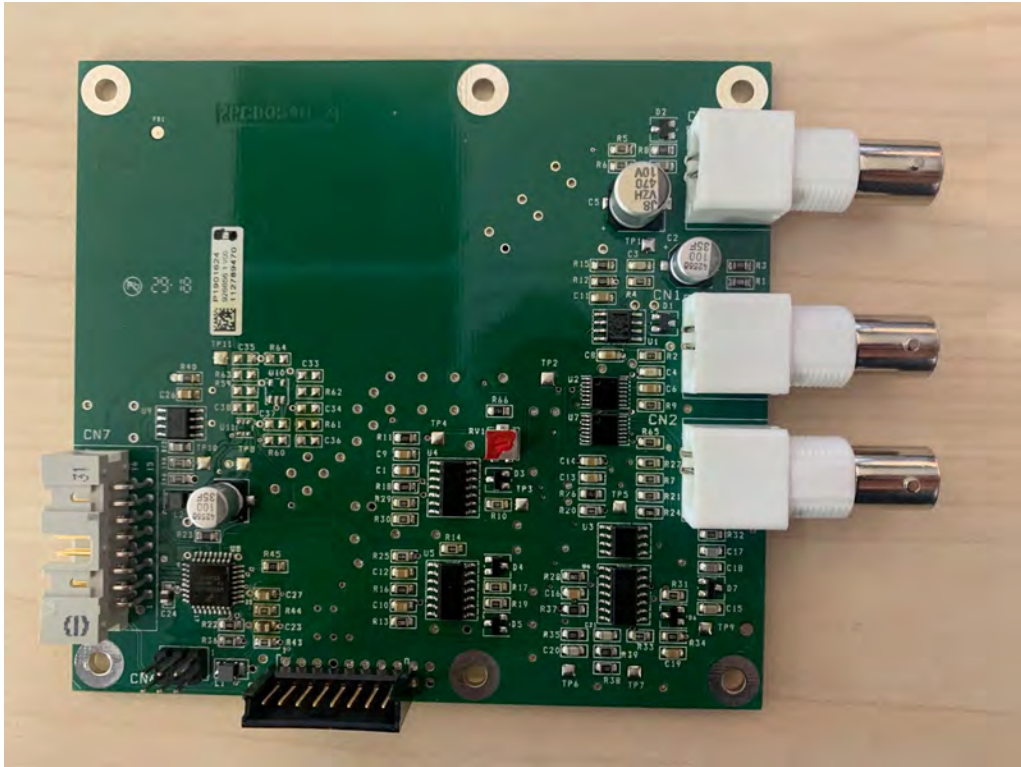
TG2U3A899-3 FRONT PANEL BOARD TOP



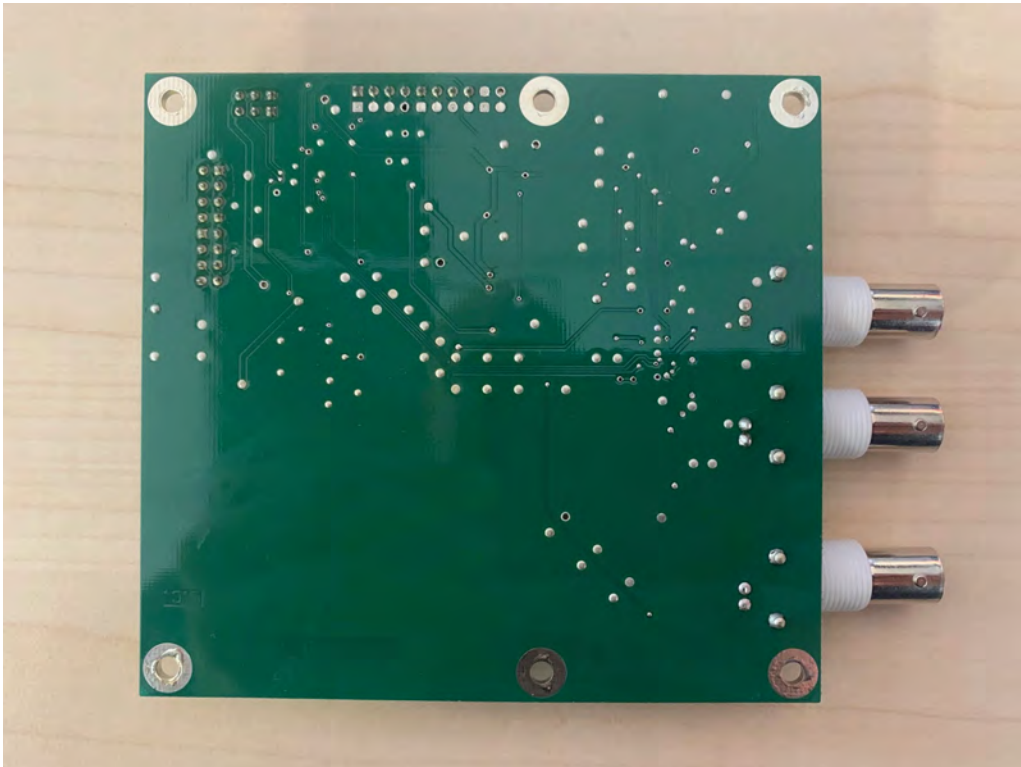
TG2U3A899-3 FRONT PANEL BOARD TOP BOTTOM



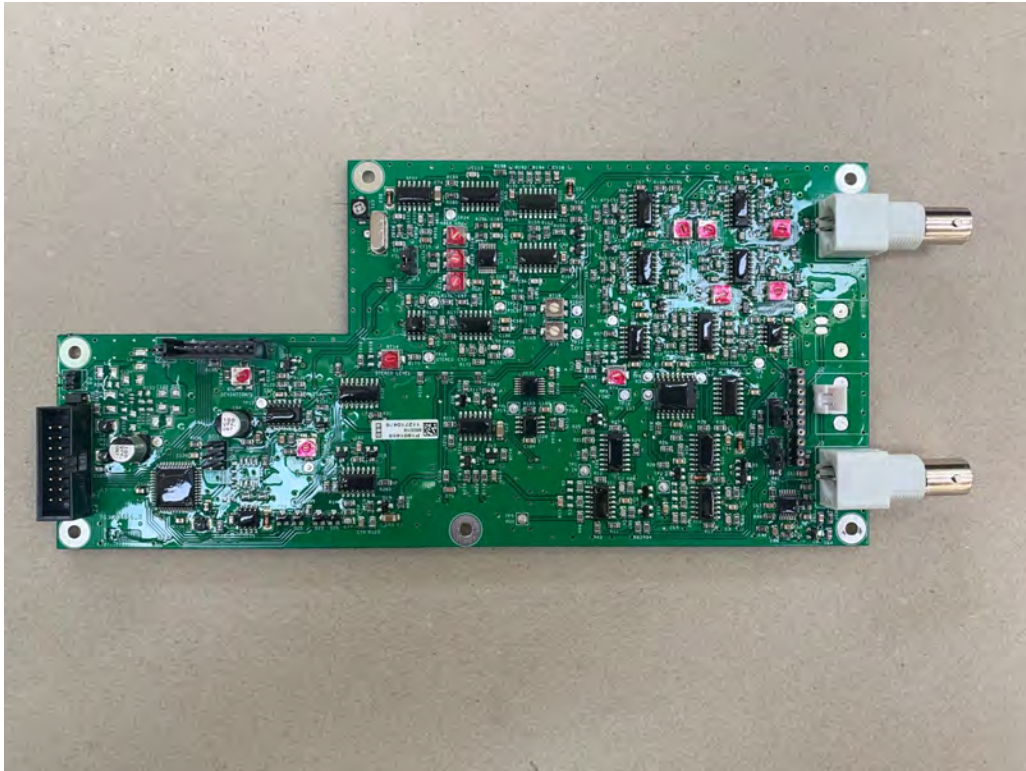
TG2UGA890-3 MPX BOARD TOP



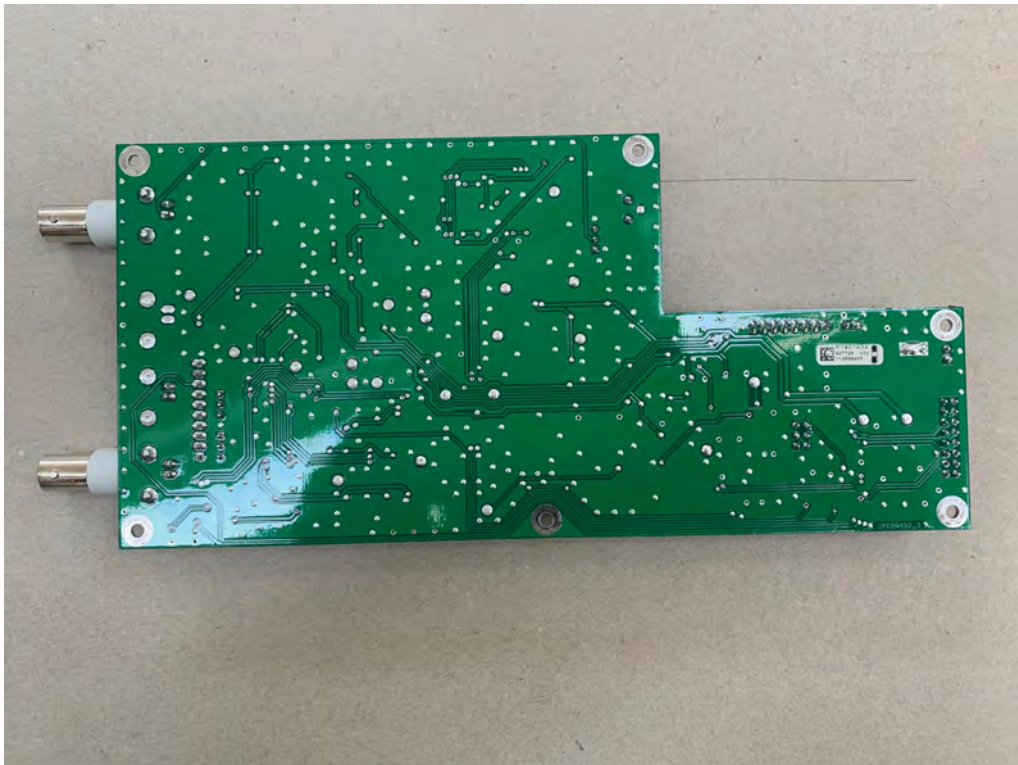
TG2UGA890-3 MPX BOARD BOTTOM



TG3K0C866-2 STEREO CODER TOP



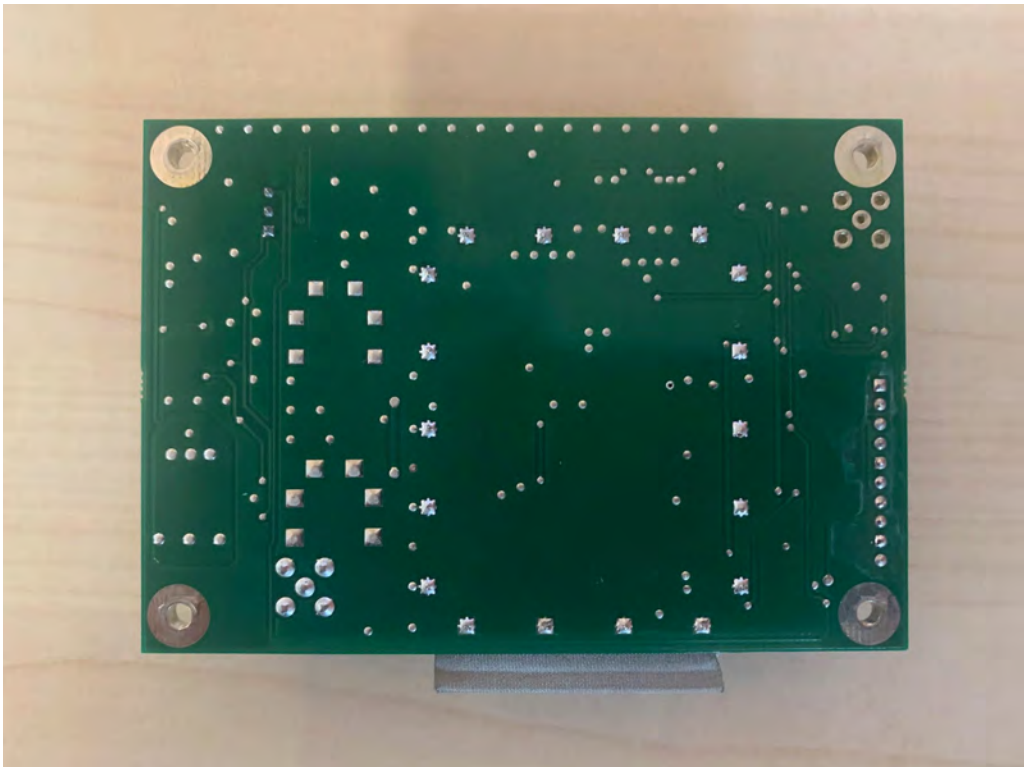
TG3K0C866-2 STEREO CODER BOTTOM



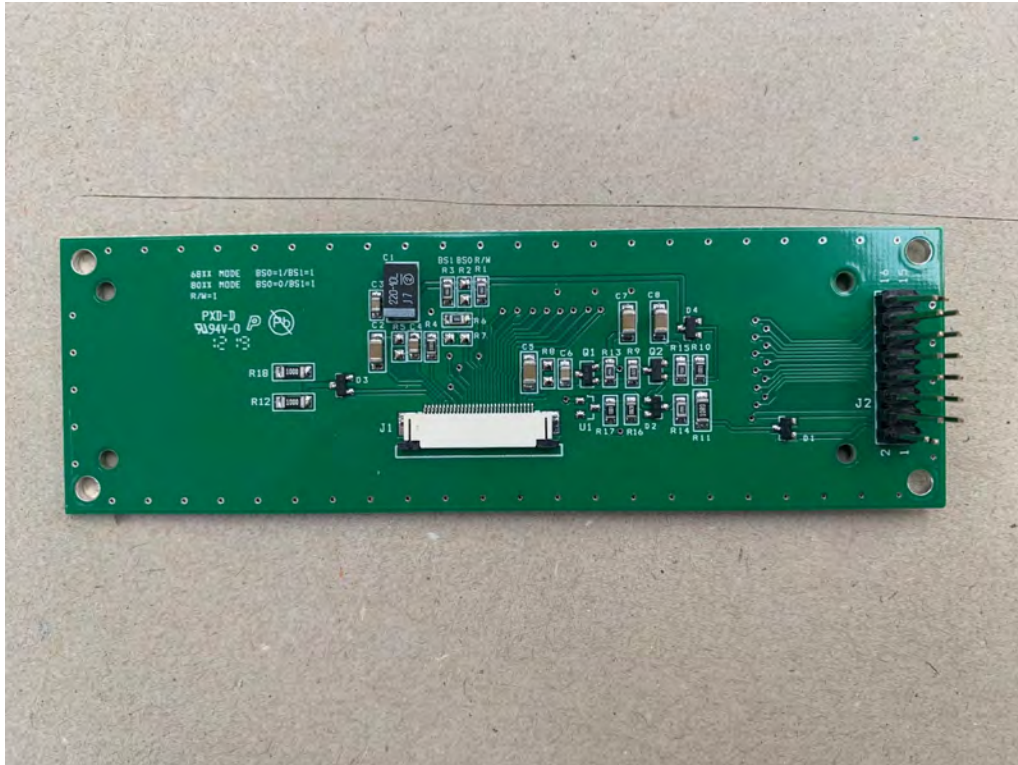
XNK AB451-2 VCO BOARD TOP



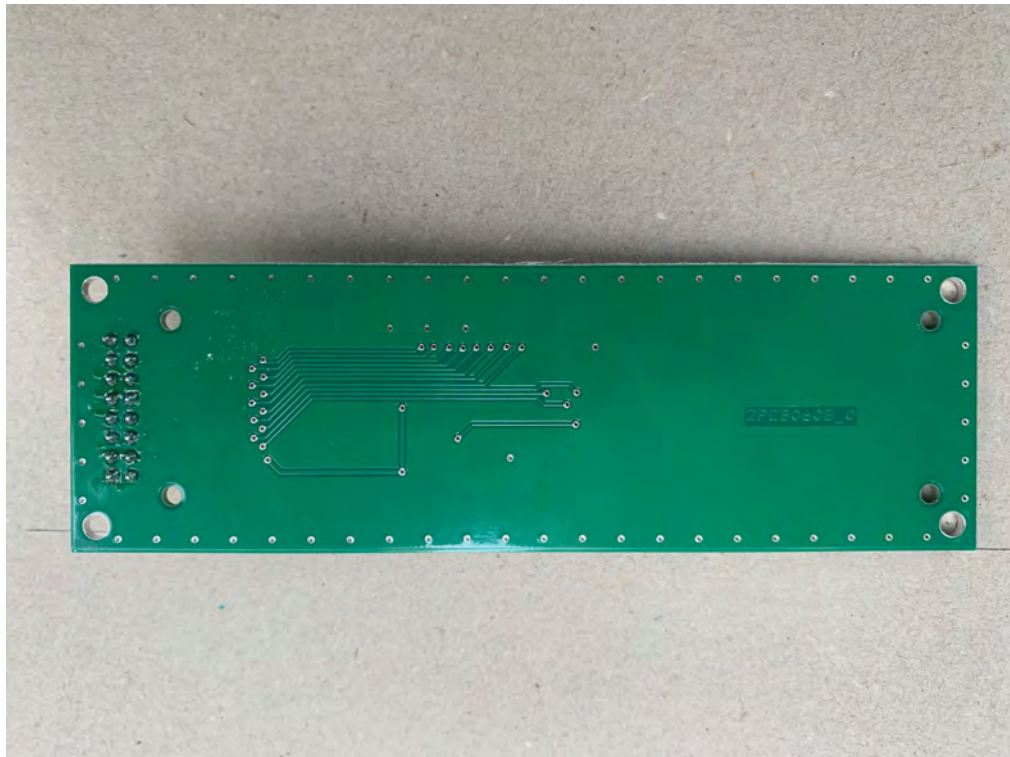
XNK AB451-2 VCO BOARD BOTTOM



XNK BA452-0 OLED ADAPTER TOP

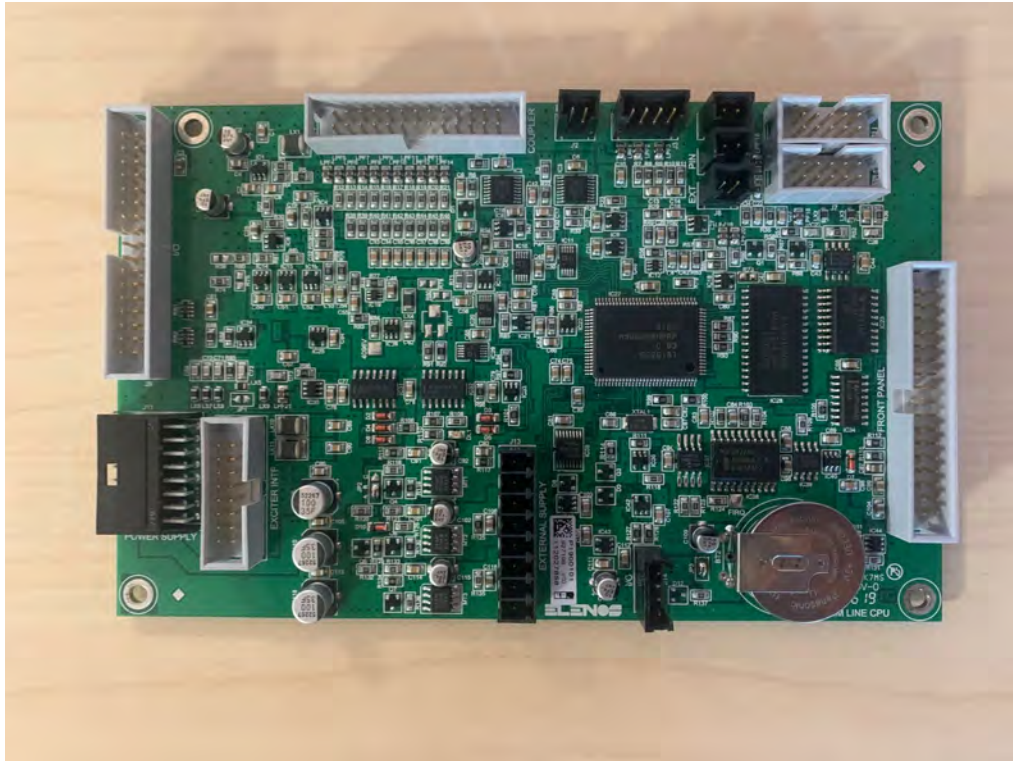


XNK AXNK BA452-0 OLED ADAPTER BOTTOM

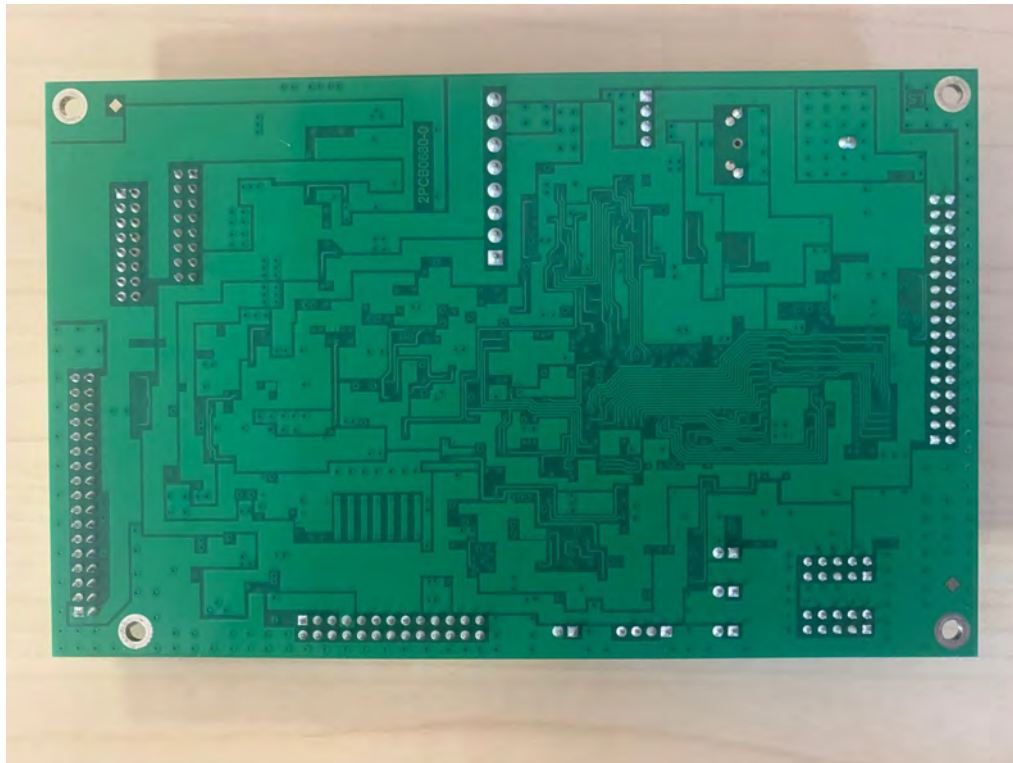




XNK EA453-0 CPU TOP



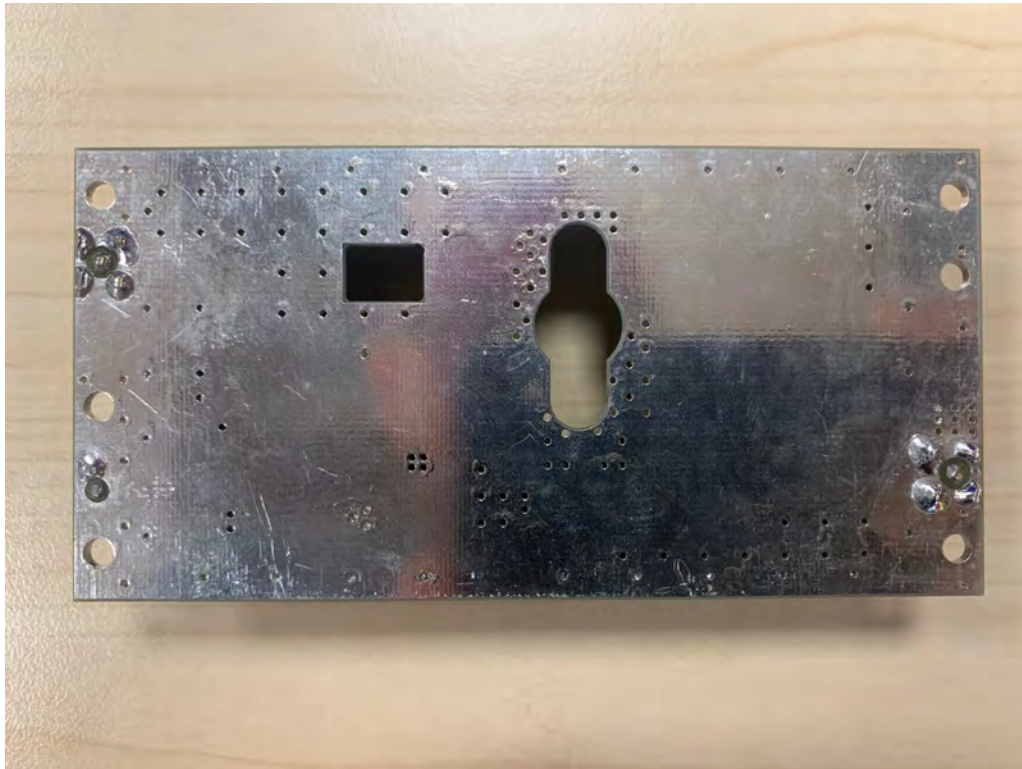
XNK EA453-0 CPU BOTTOM



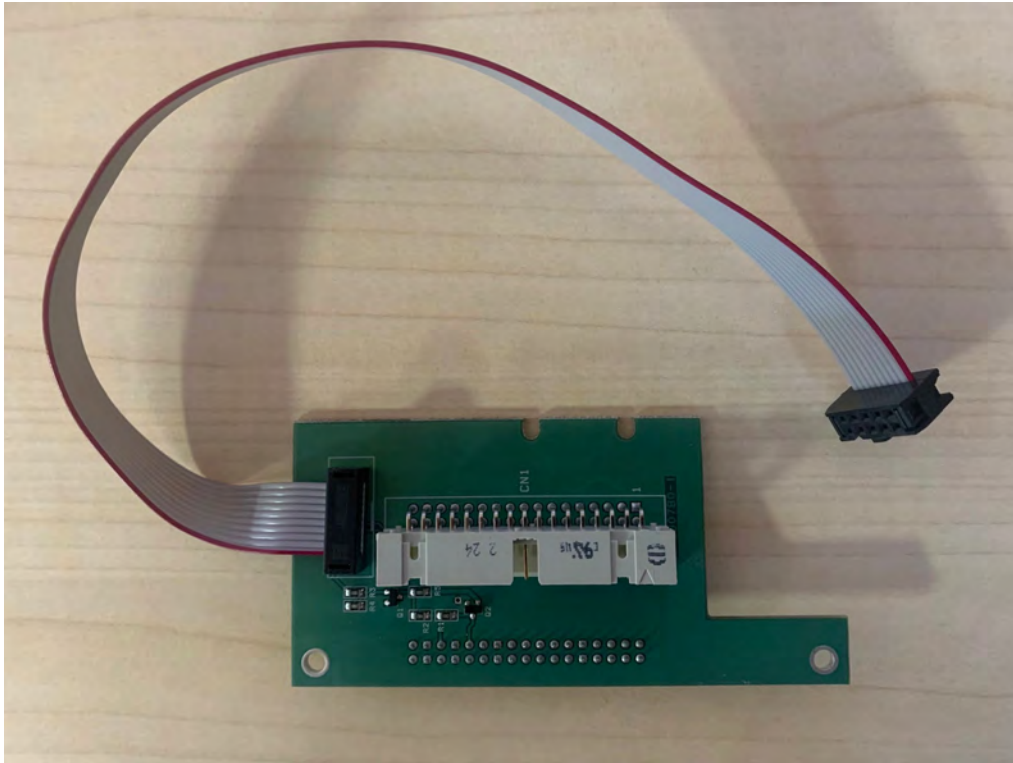
XNK GB454-5 MRF171A DRIVER BOARD TOP



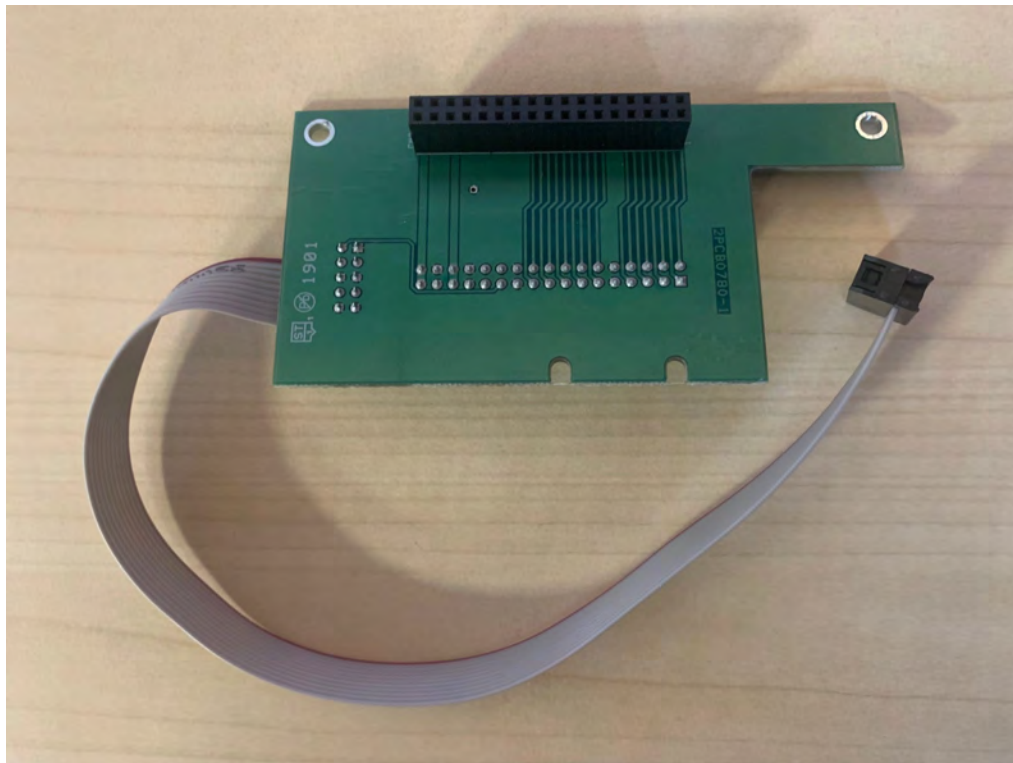
XNK GB454-5 MRF171A DRIVER BOARD BOTTOM



XNK PA456-1 PGM AND SERIAL CONNECTION TOP



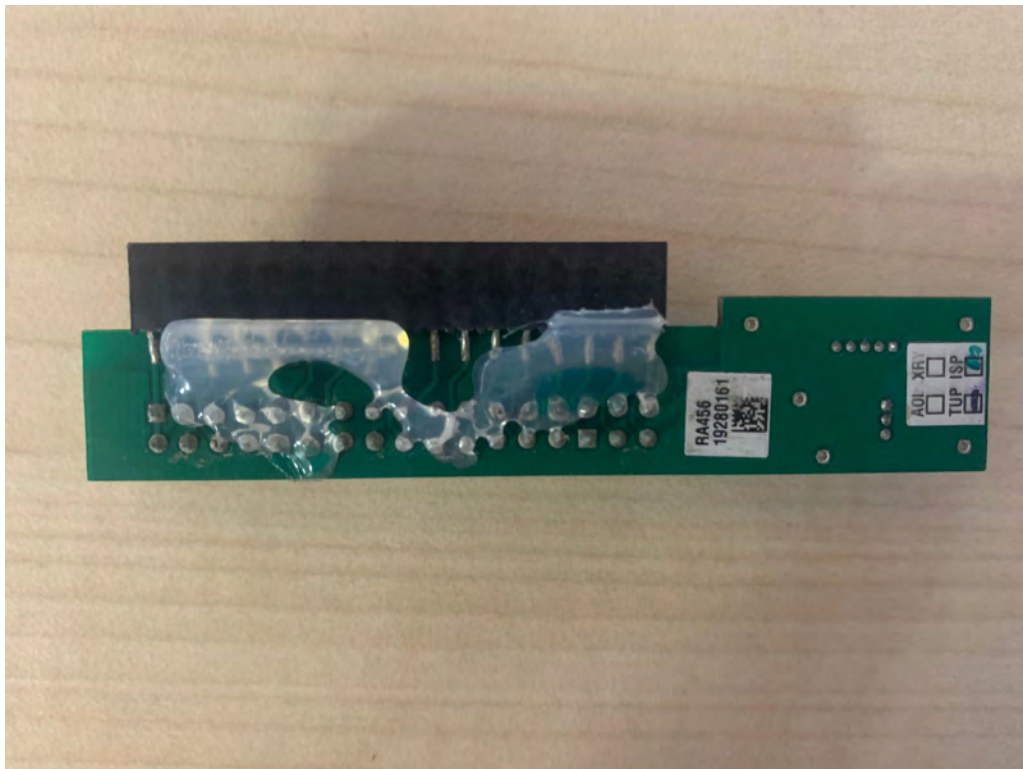
XNK PA456-1 PGM AND SERIAL CONNECTION BOTTOM



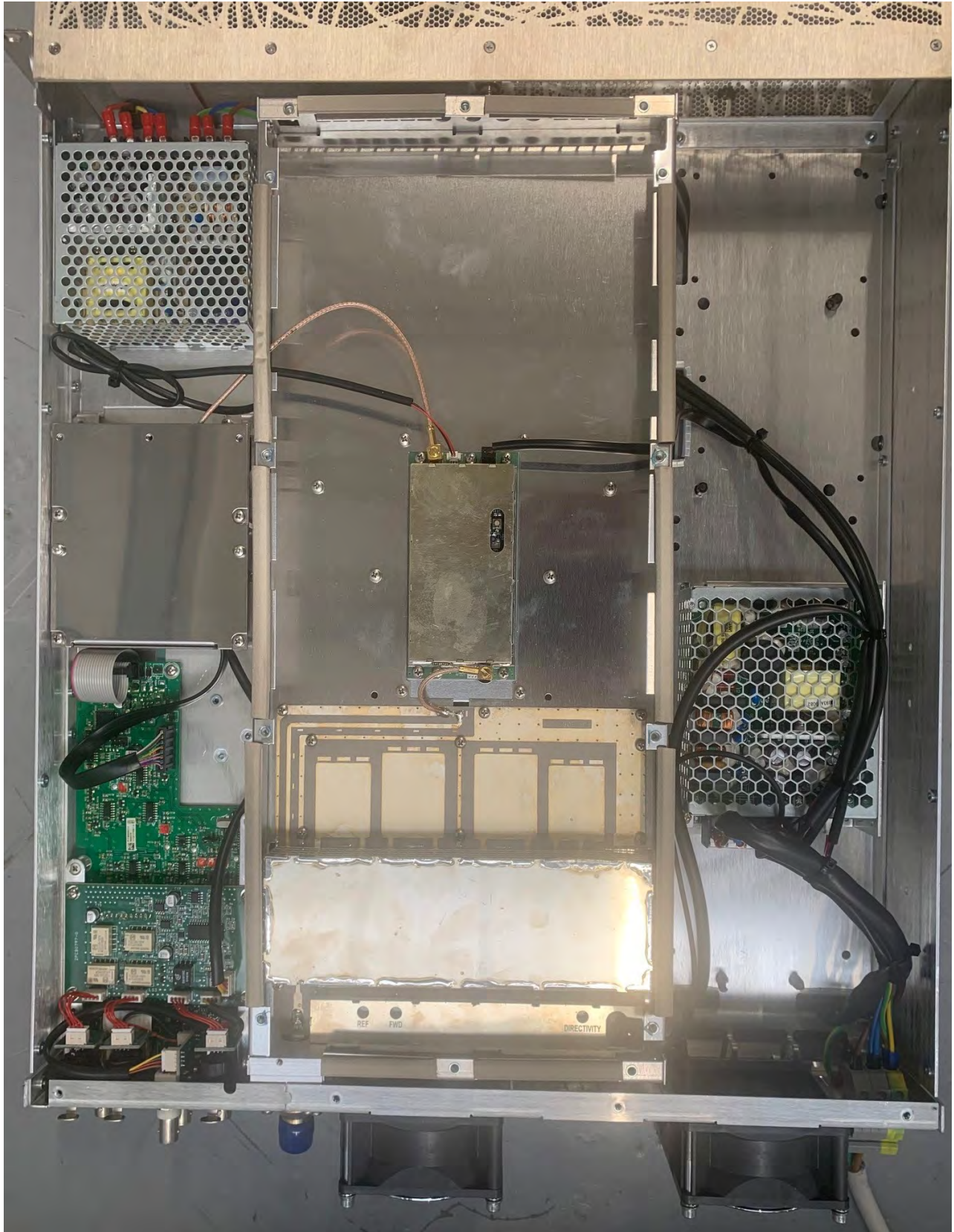
XNK RA456-1 INTERLOCK INVERTER TOP



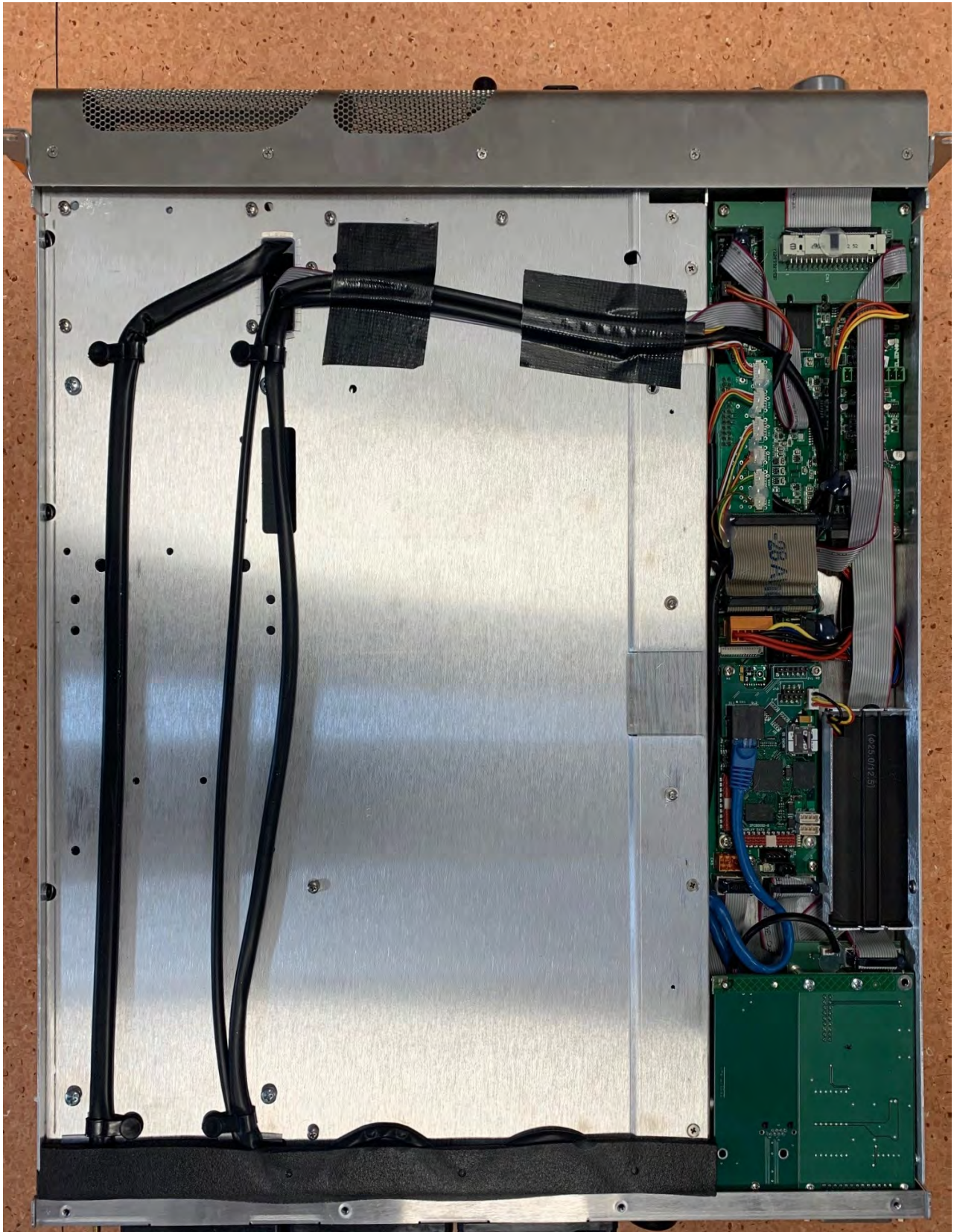
XNK RA456-1 INTERLOCK INVERTER BOTTOM

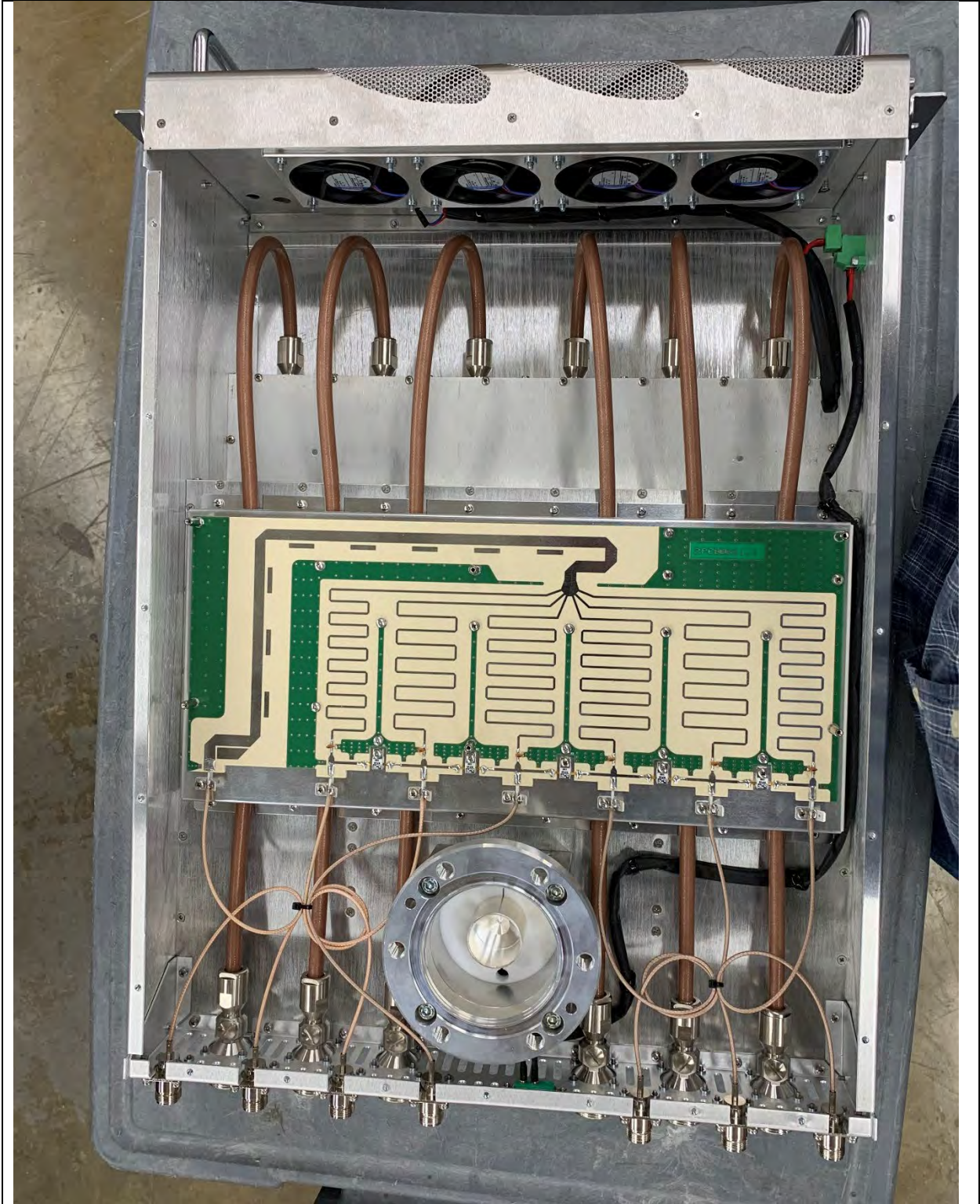


ETG20 TOP VIEW



ETG20 BOTTOM VIEW





Combiner Top Open



Controller Top Open Level 1

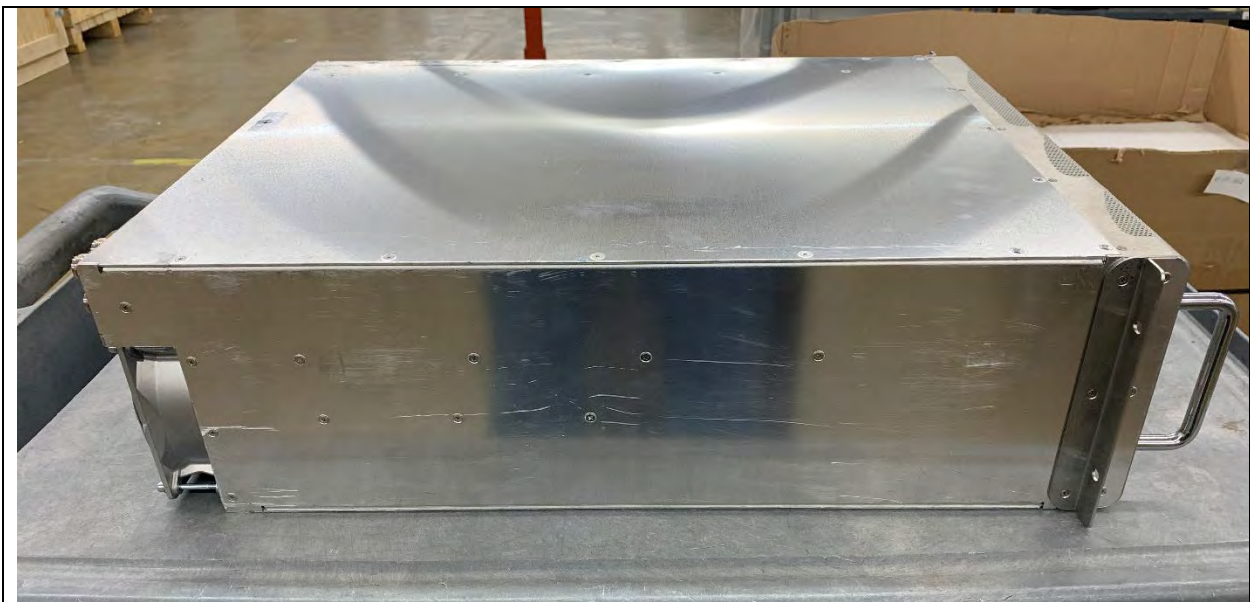




Controller Top Open Level 2



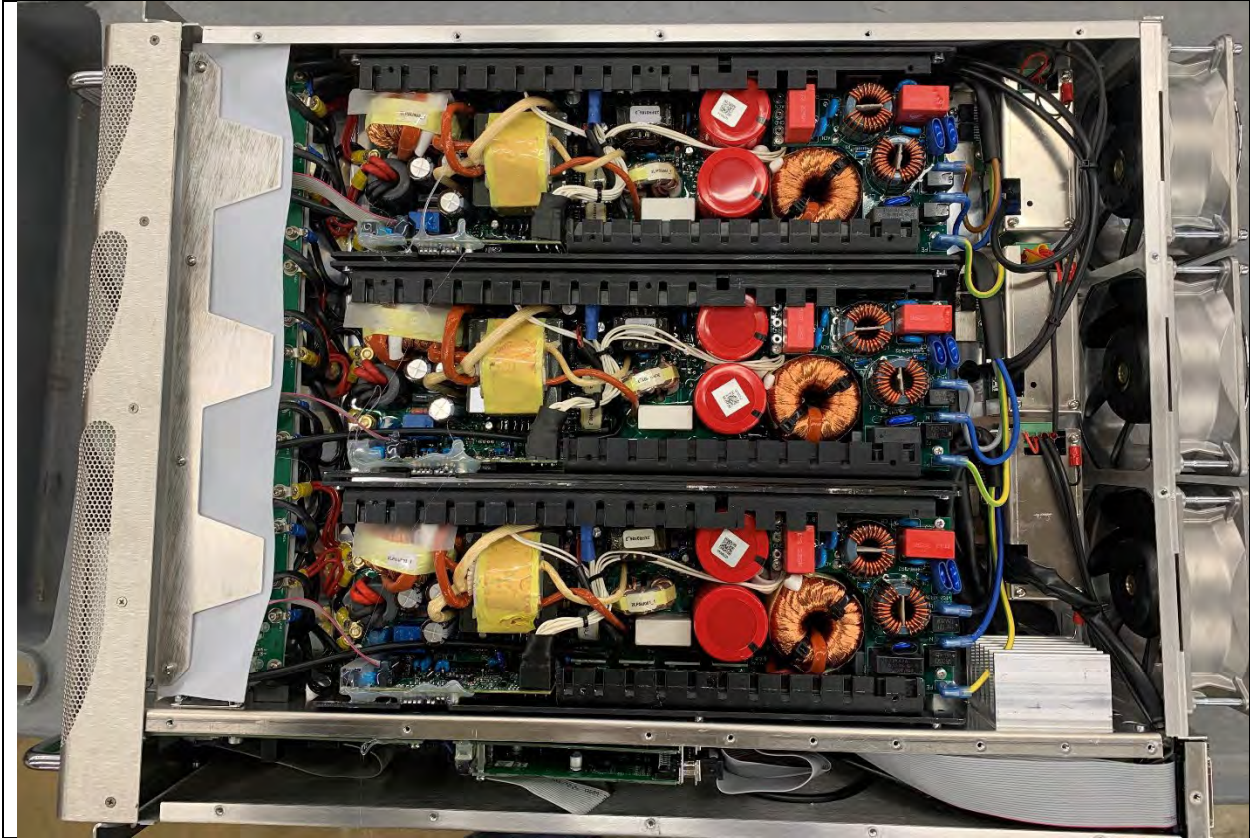
Controller Bottom



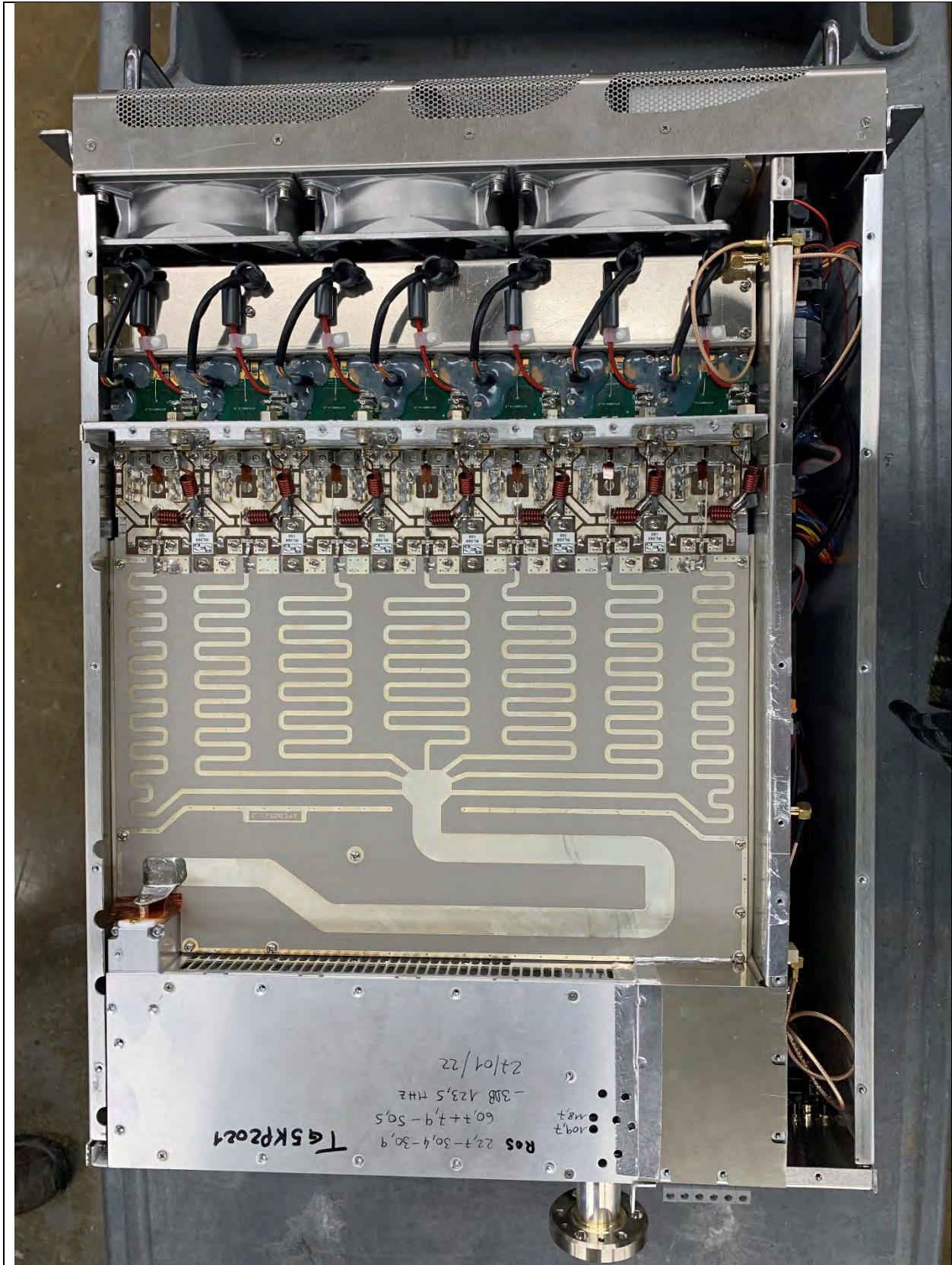
Controller Right



Load Top



E5000 Amplifier Top Open View



E5000 Amplifier Bottom View