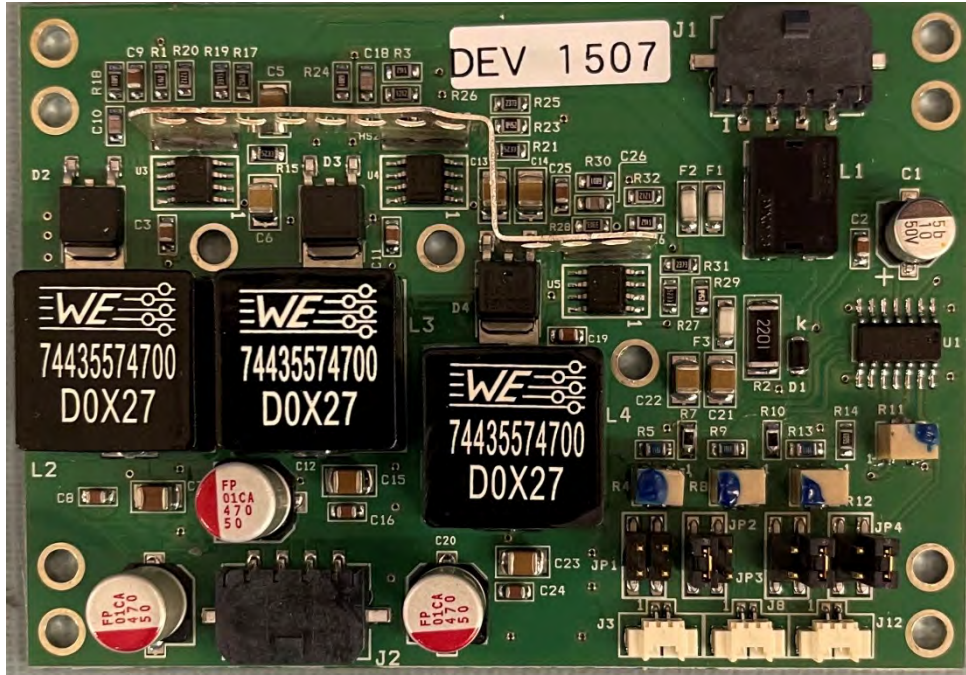
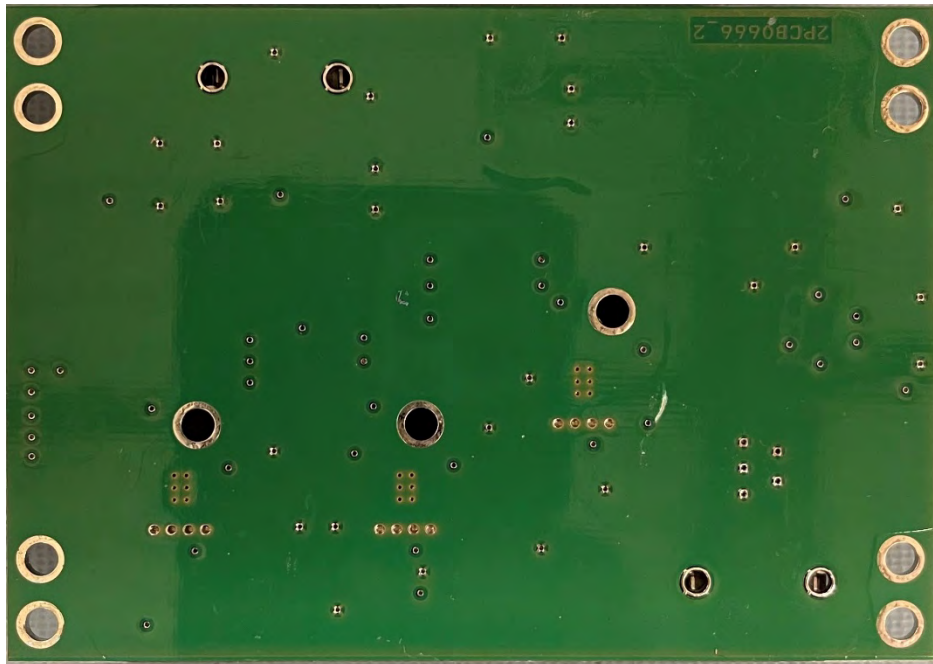


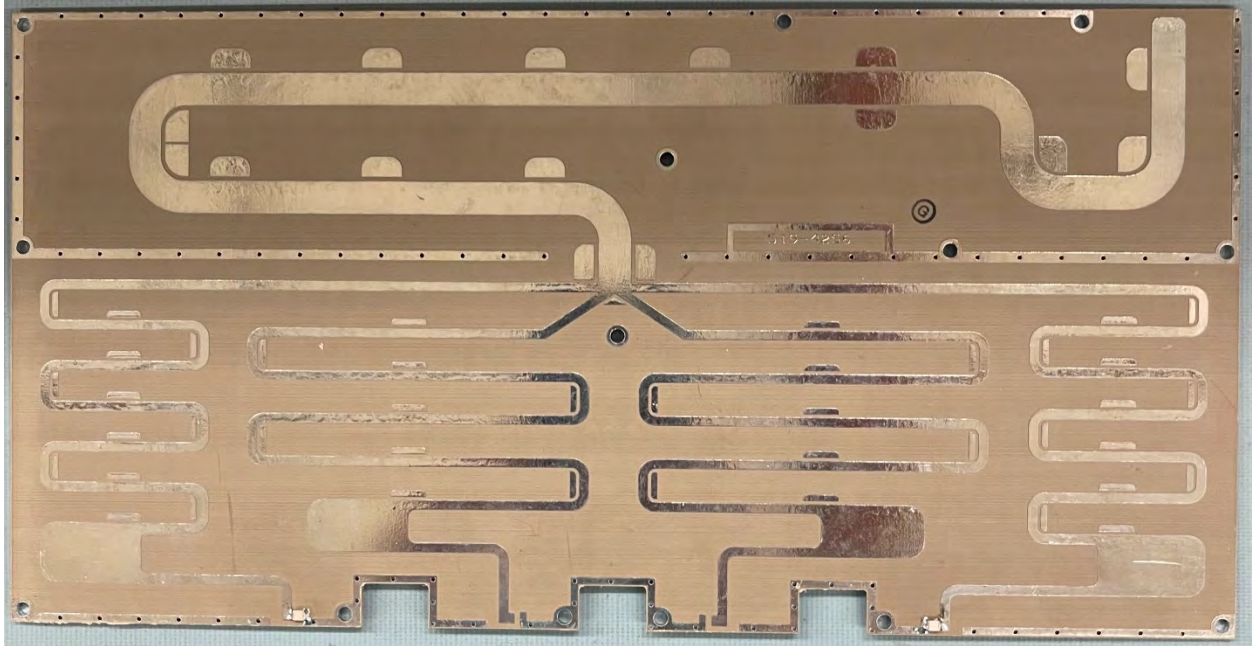
APPLICANT: BEI ELECTRONICS, LLC.  
FCC ID: DDE-STXE  
IC: 131-STXE  
Internal Photos



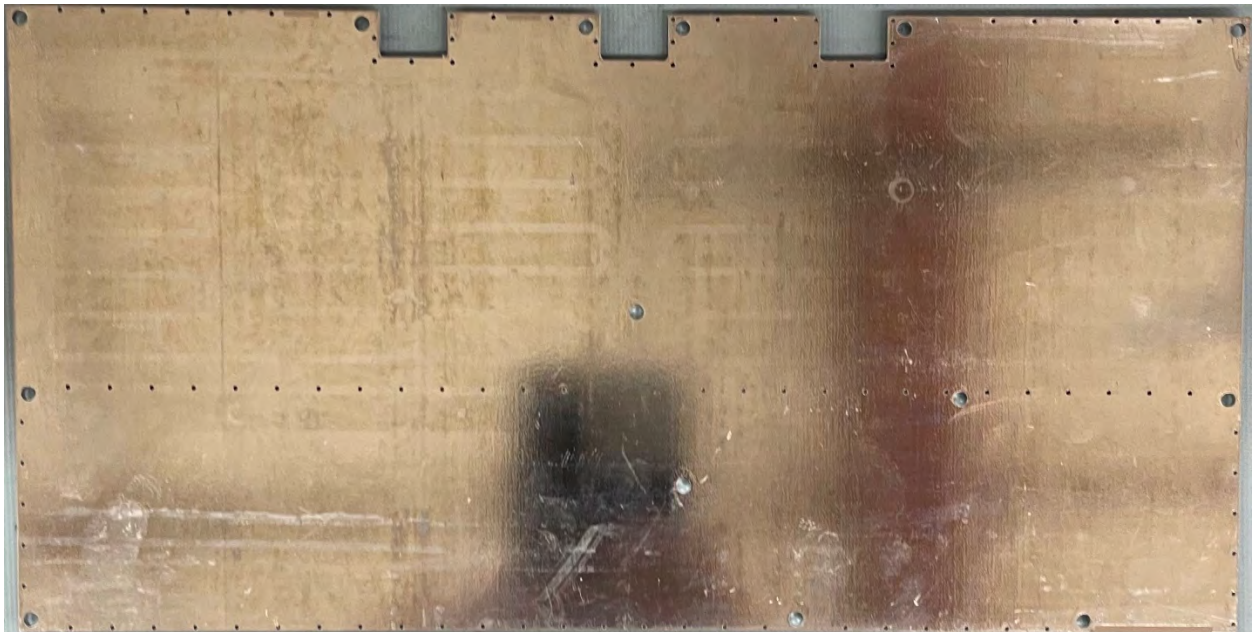
DC-DC Conv Fan supply – Front View



DC-DC Conv Fan supply – Back View



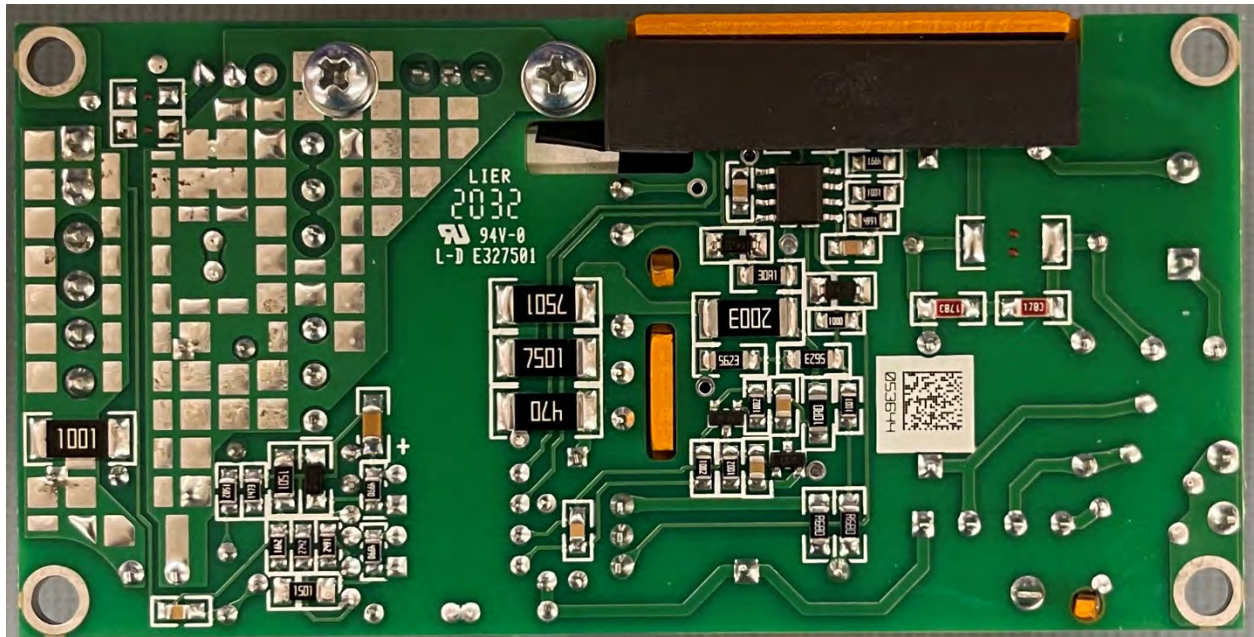
4-Way RF Power Combiner – Front View



4-Way RF Power Combiner – Back View



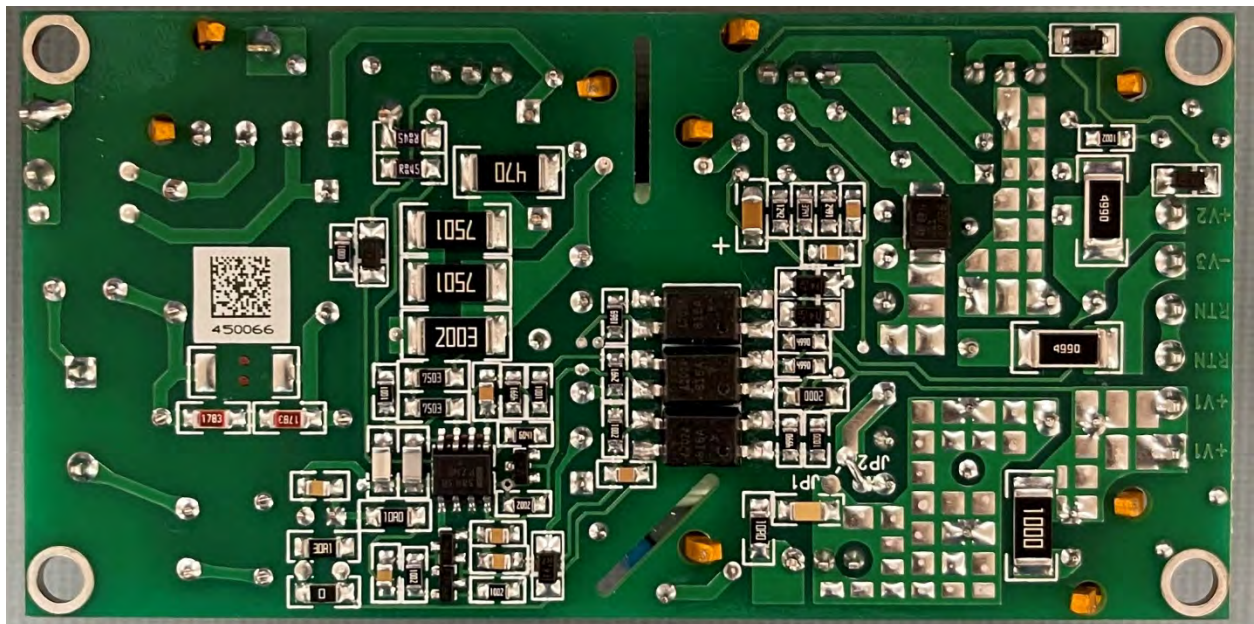
Driver Power Supply – Front view



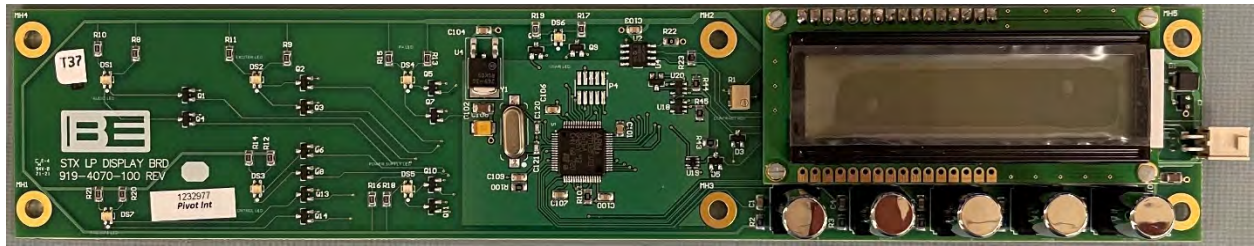
Driver Power Supply – Back view



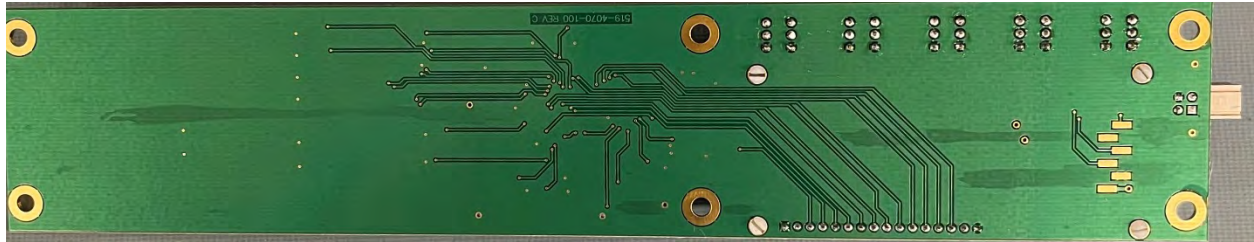
Controller Power Supply – Front View



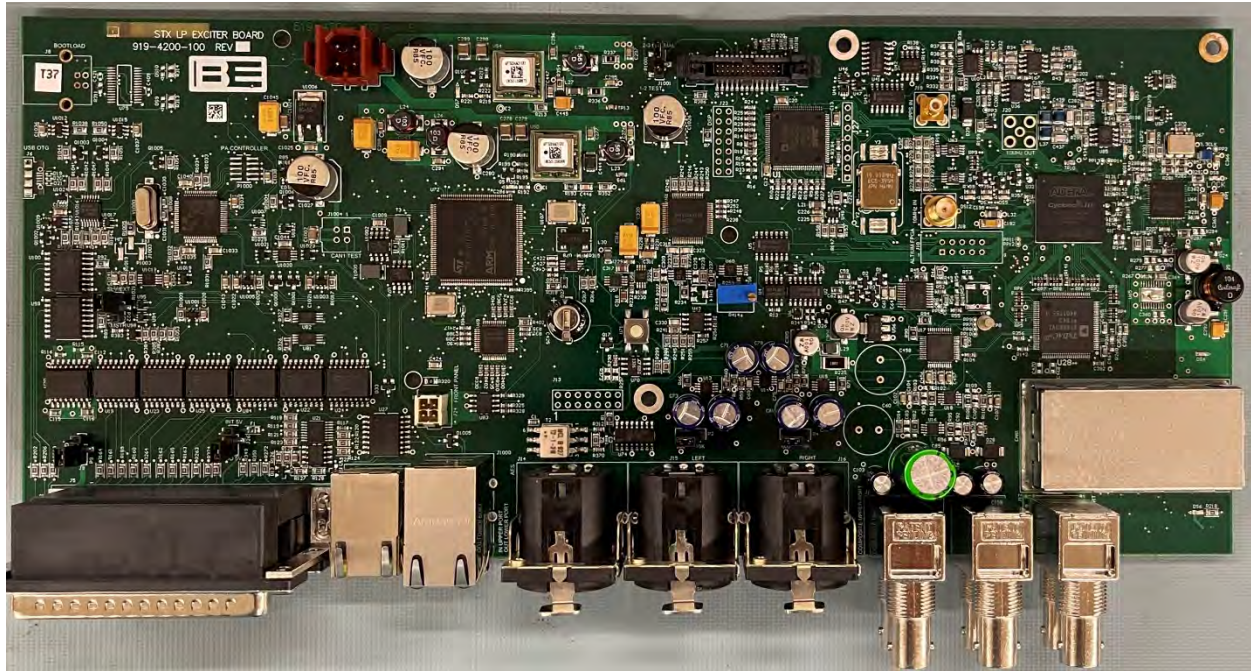
Controller Power supply – Back View



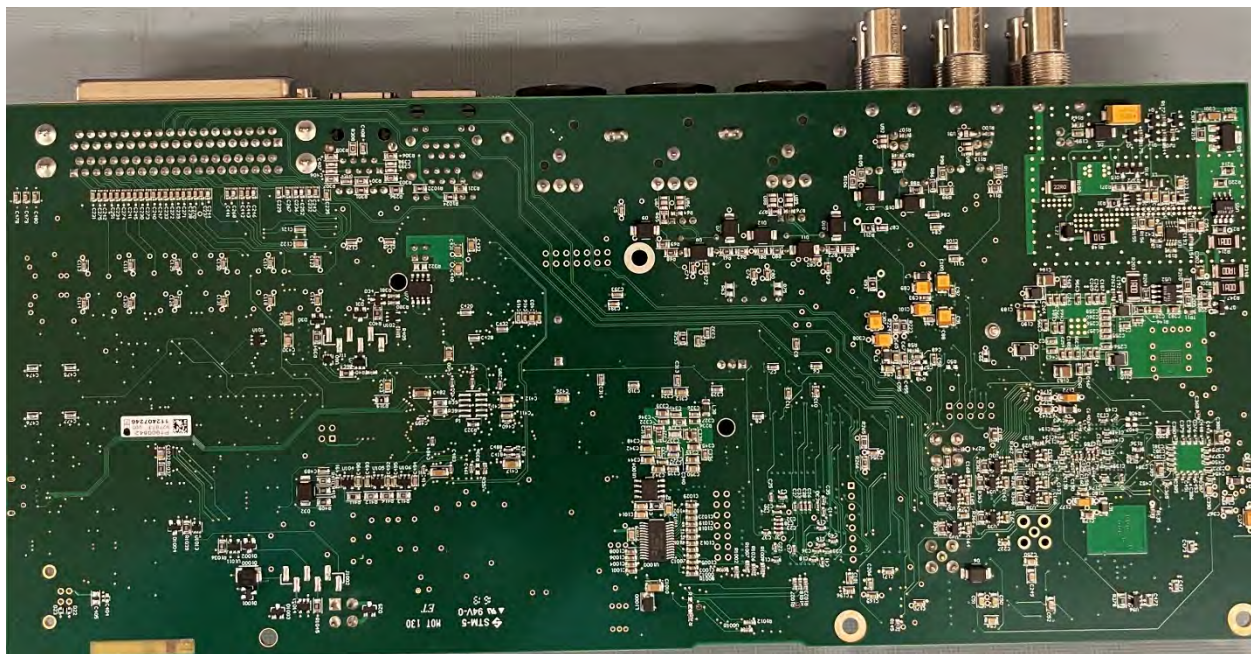
STX LP DISPLAY BOARD FRONT VIEW



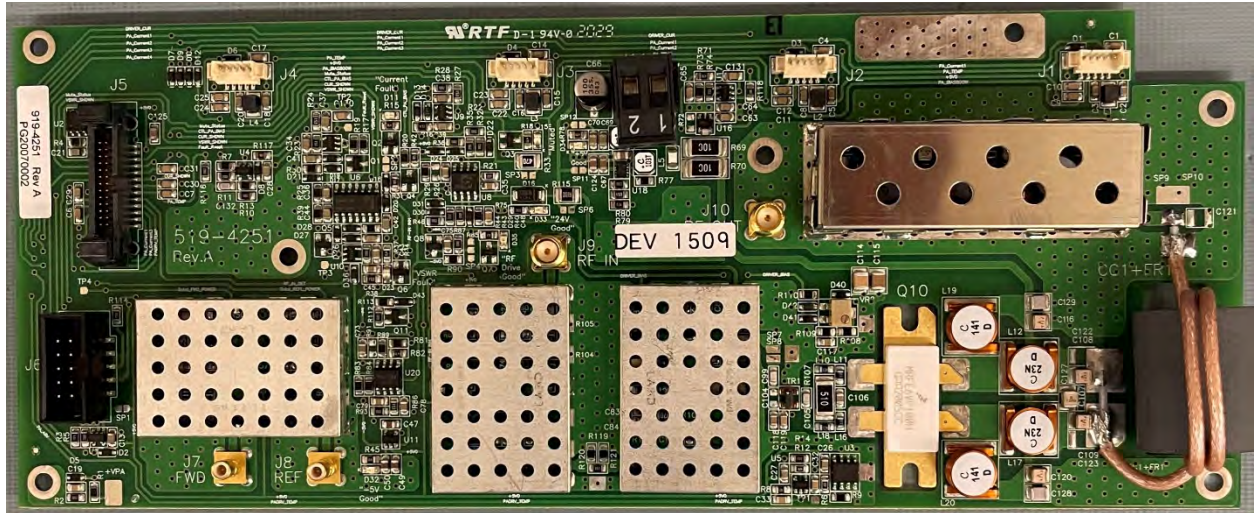
STX DISPLAY BOARD REAR VIEW



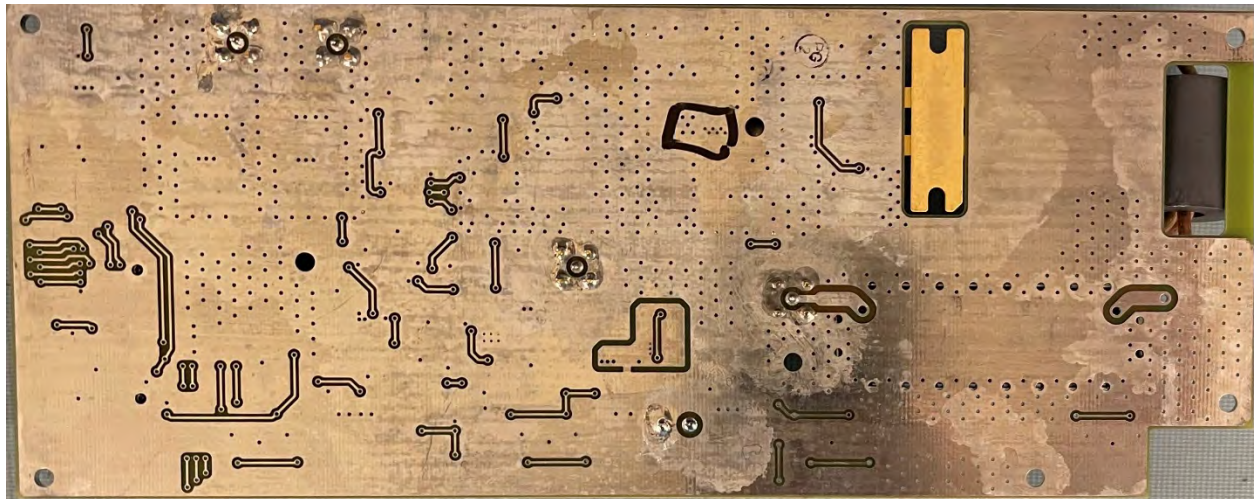
CPE BOARD – FRONT VIEW



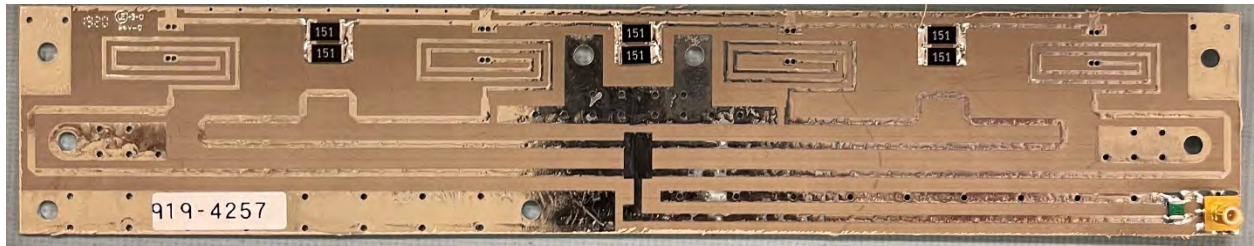
CPE BOARD – BACK VIEW



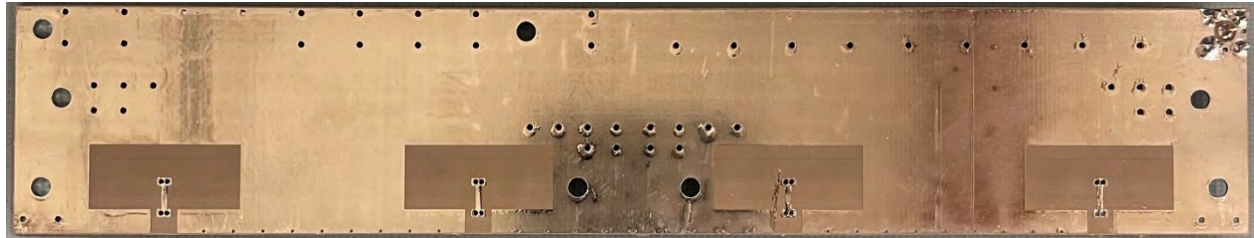
INTERFACE DRIVER BOARD – FRONT VIEW



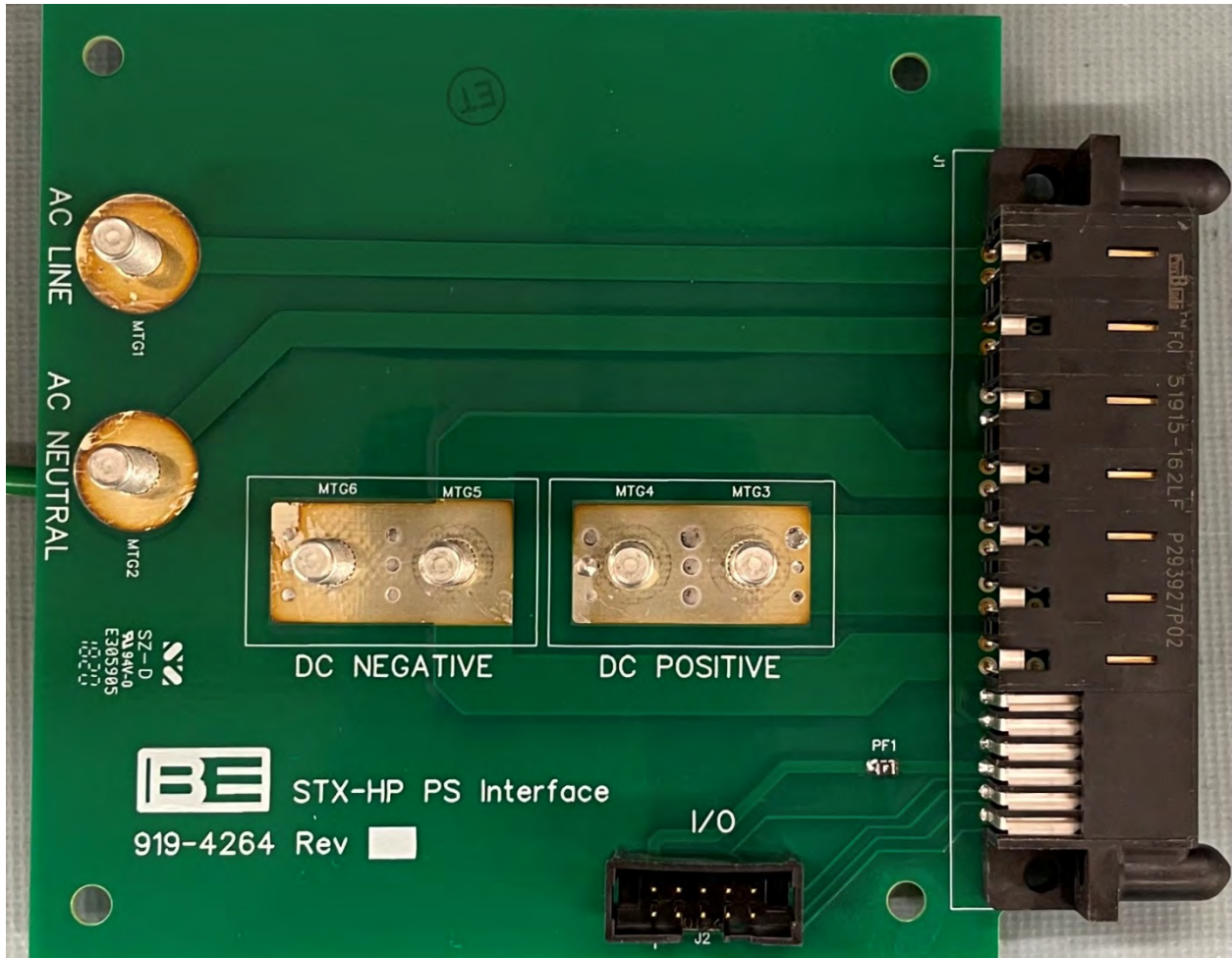
INTERFACE DRIVER BOARD – REAR VIEW



FOUR WAY SPLITTER – FRONT VIEW

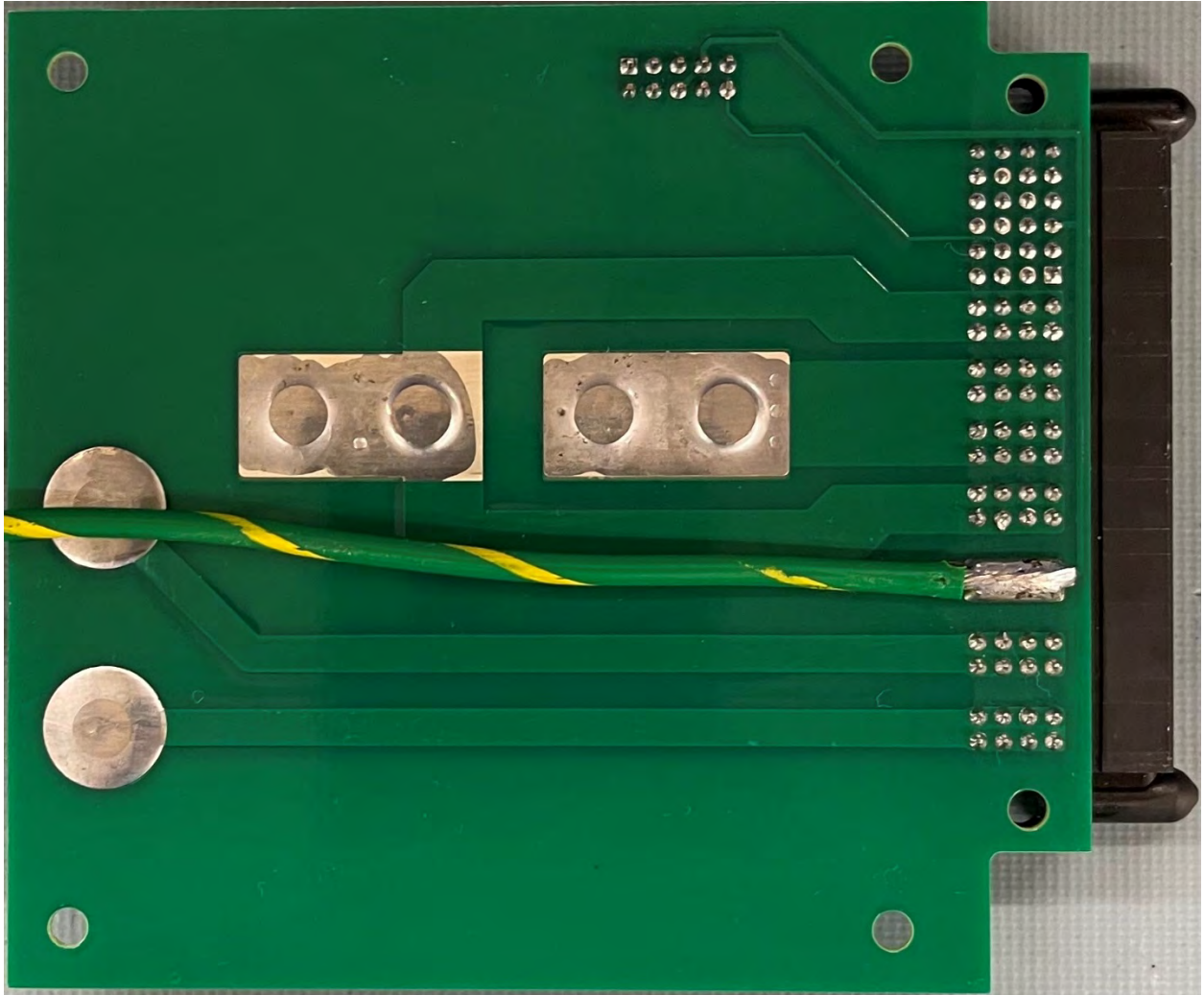


FOUR WAY SPLITTER – FRONT VIEW



PS INTERFACE – FRONT VIEW

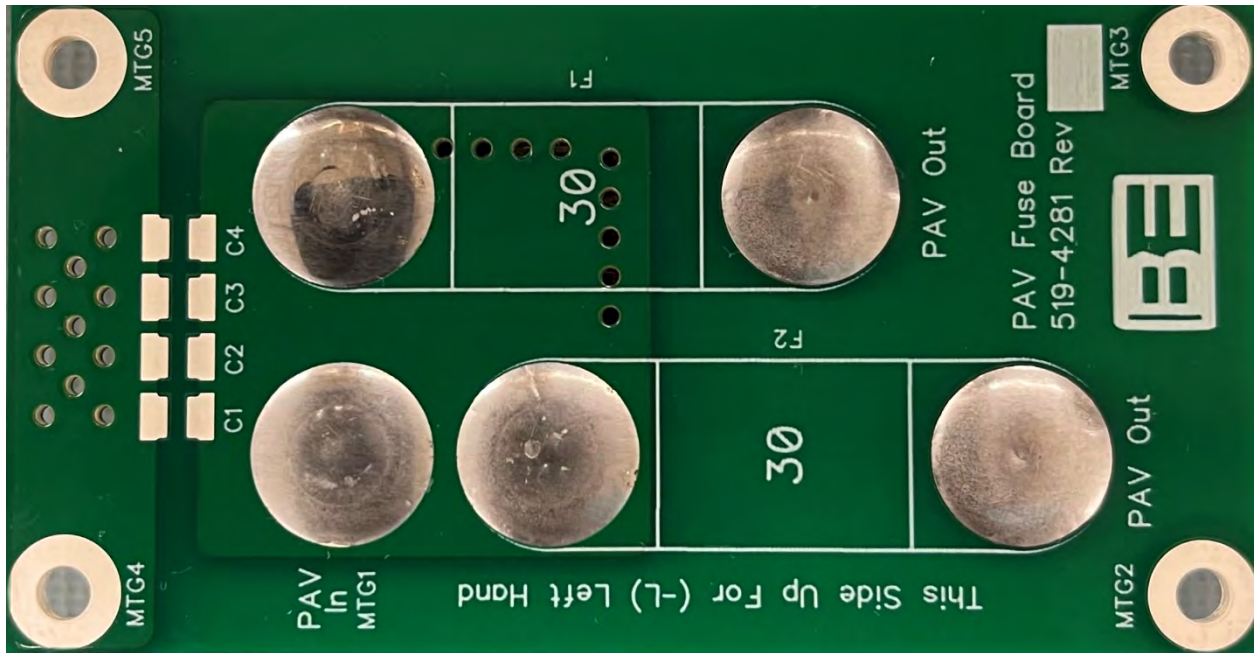




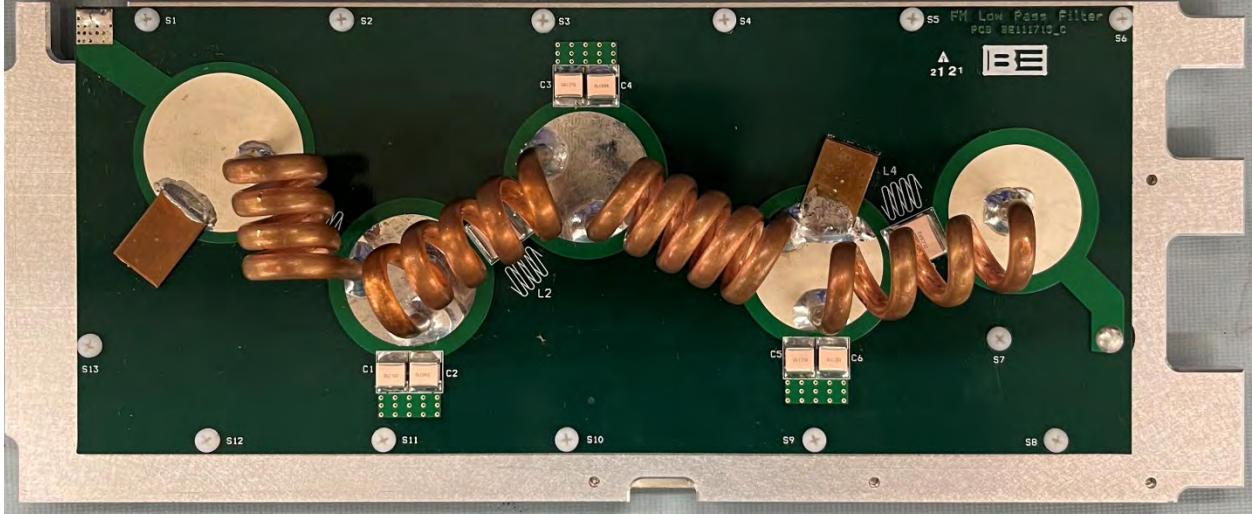
PS INTERFACE – BACK VIEW



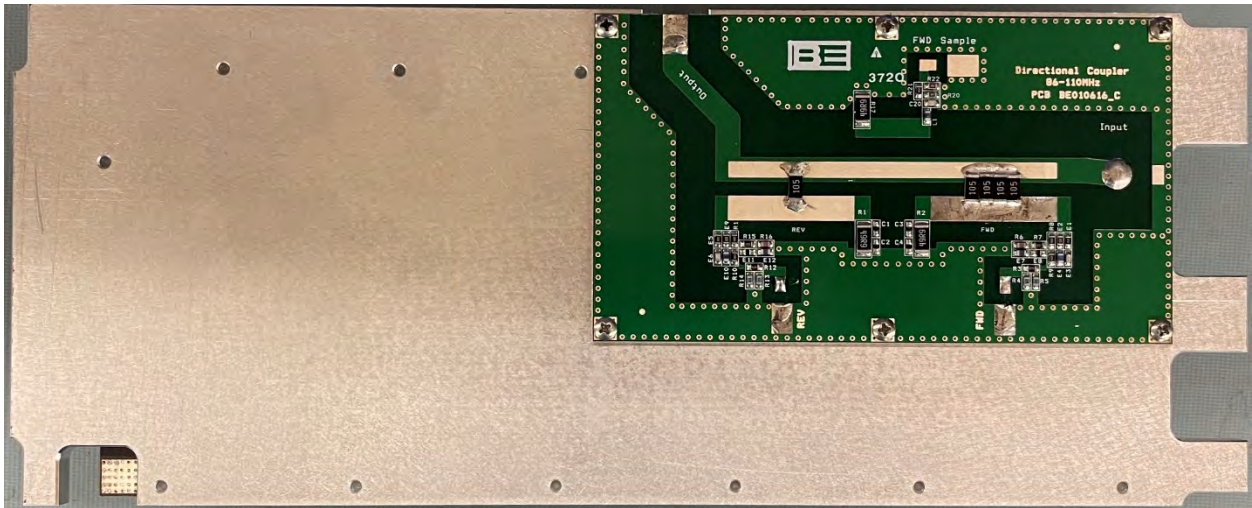
FUSE BOARD – FRONT VIEW



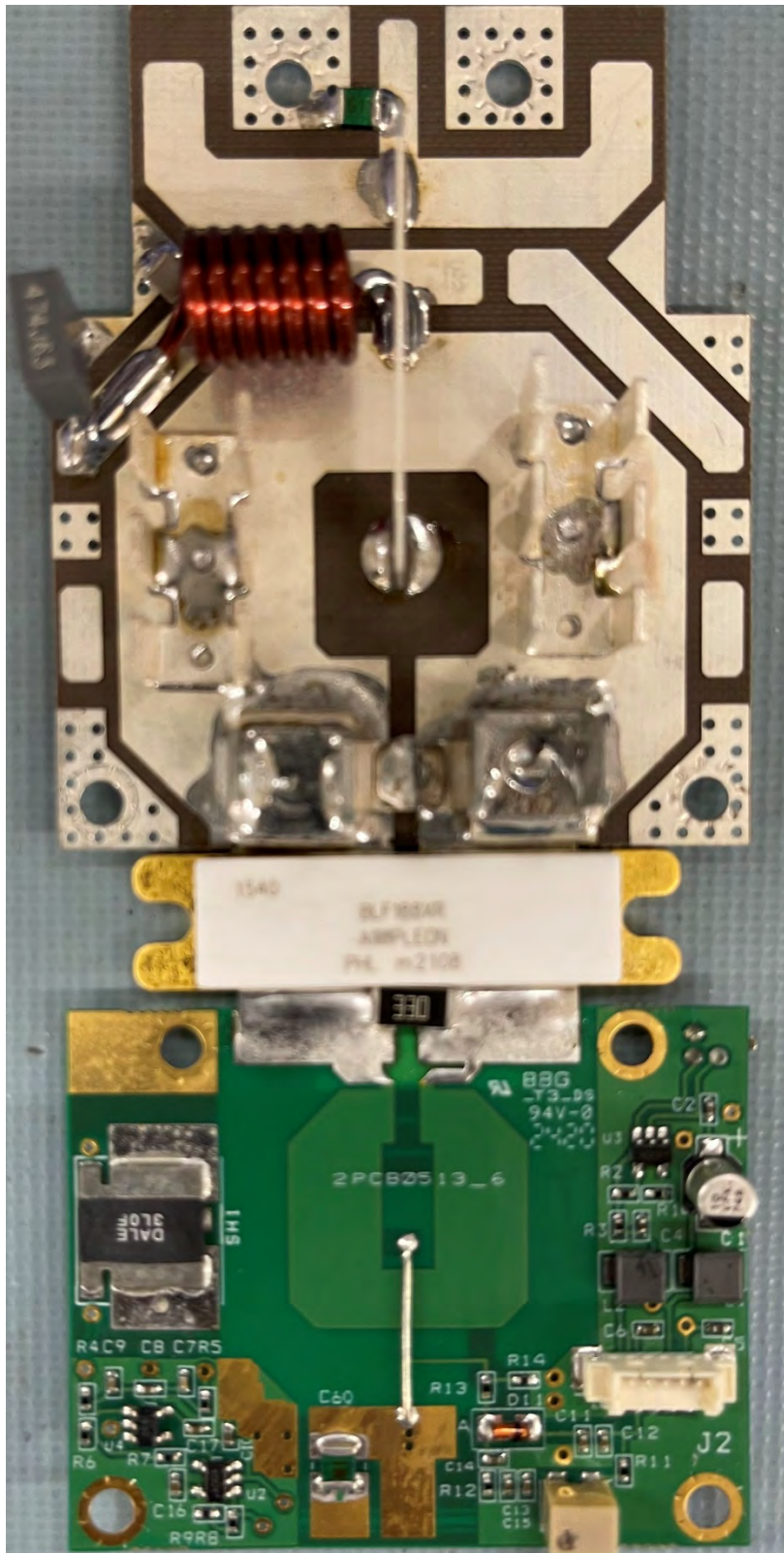
FUSE BOARD – BACK VIEW



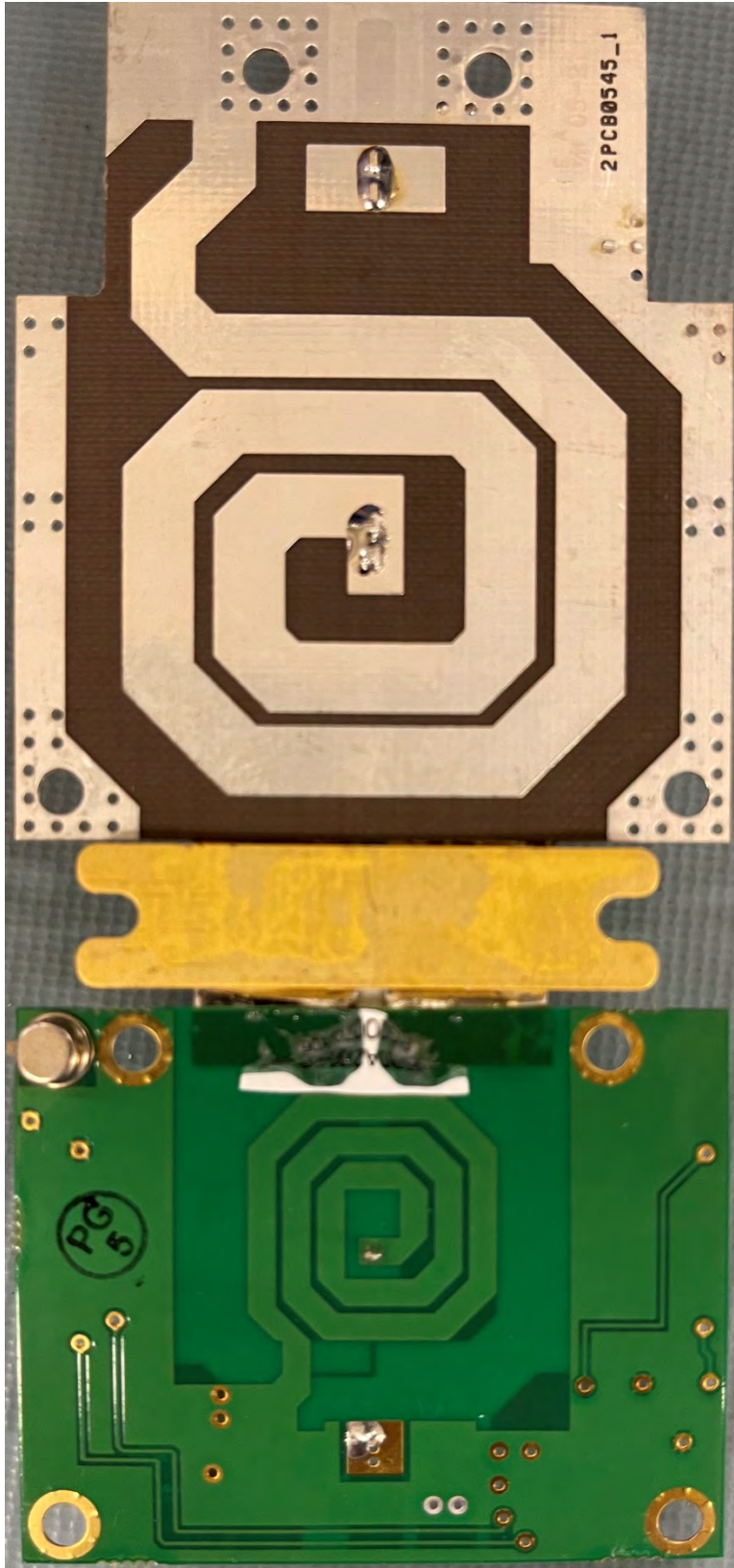
LPF DIR COUPLER ASSY – FRONT VIEW



LPF DIR COUPLER ASSY – BACK VIEW



Assembled 800W RF Output Pallet – Front View



Assembled 800W RF Output Pallet – Back View



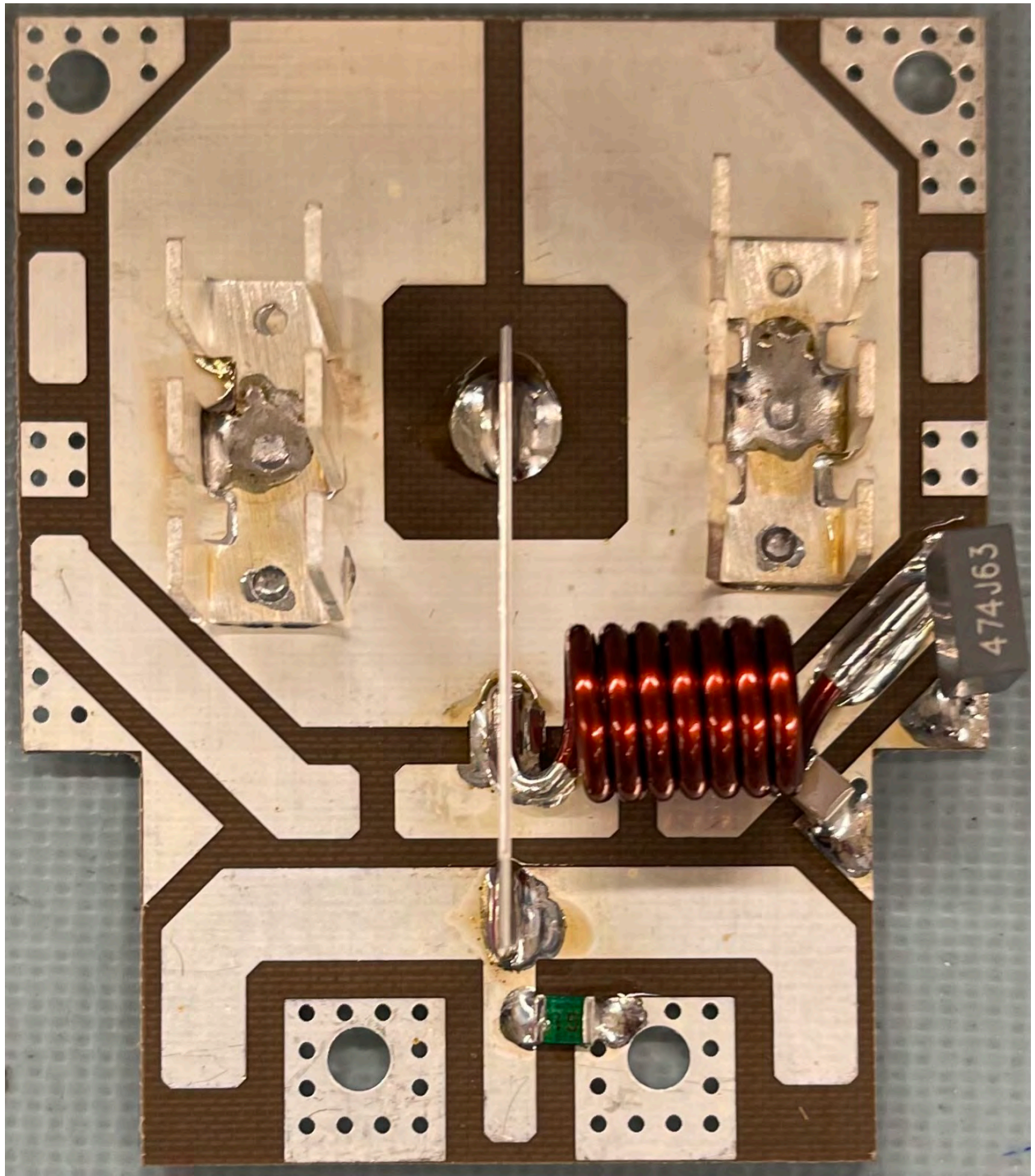
GE P2725AC48TEZ-FB PA POWER SUPPLY – FRONT VIEW



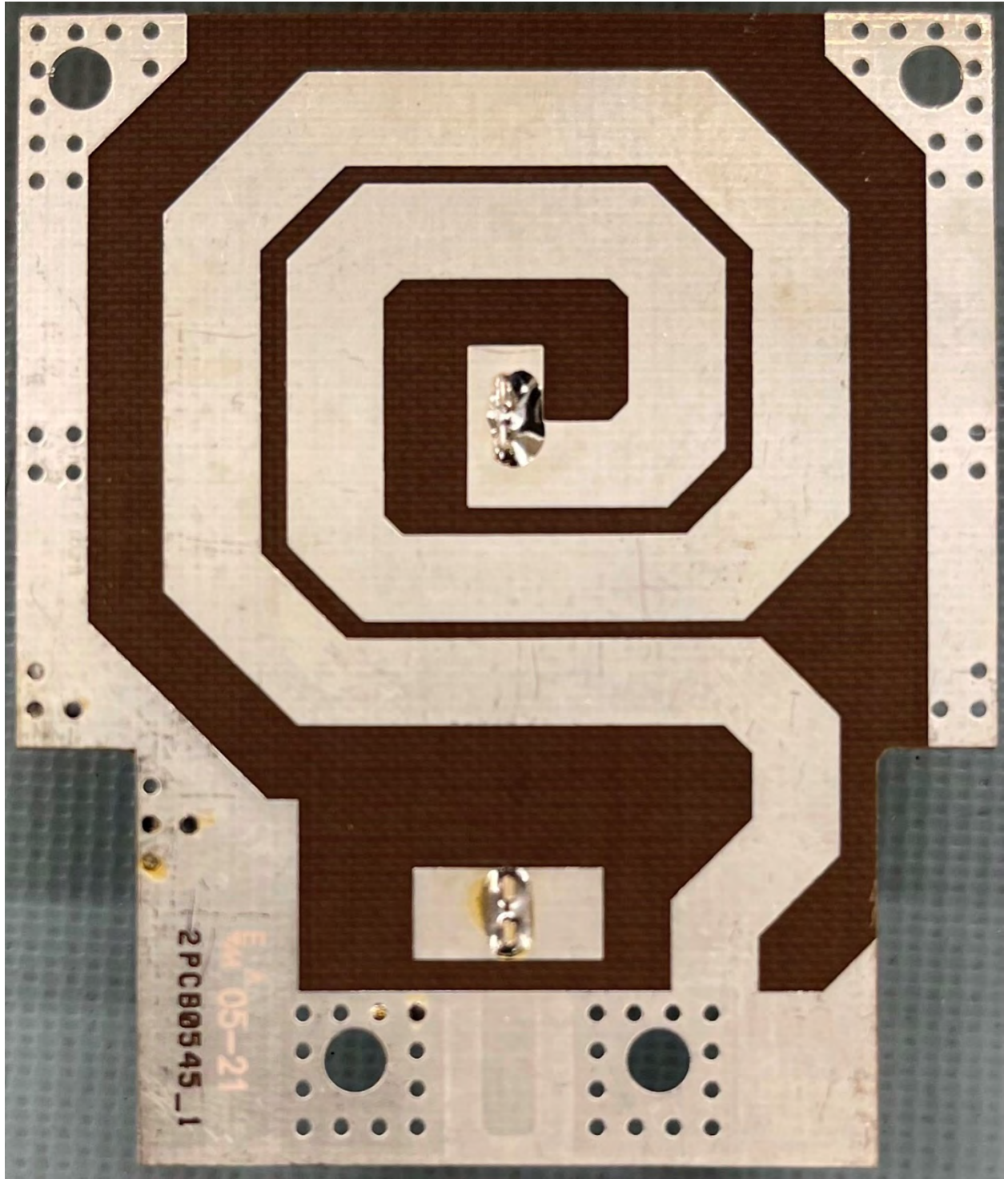
GE P2725AC48TEZ-FB PA POWER SUPPLY – REAR VIEW



GE P2725AC48TEZ-FB PA POWER SUPPLY – TOP VIEW

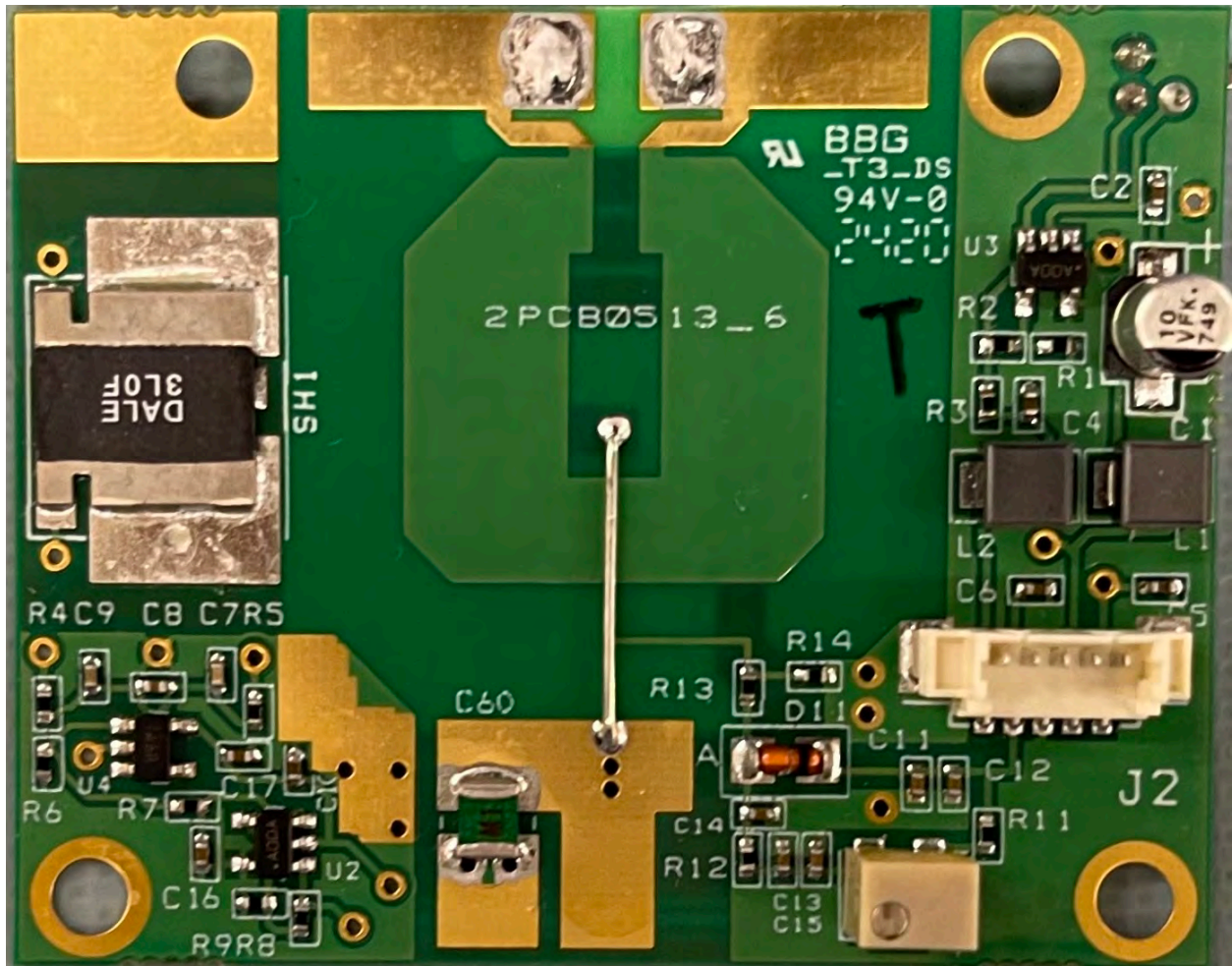


MAMPAA226-0 RF OUTPUT BOARD – FRONT VIEW

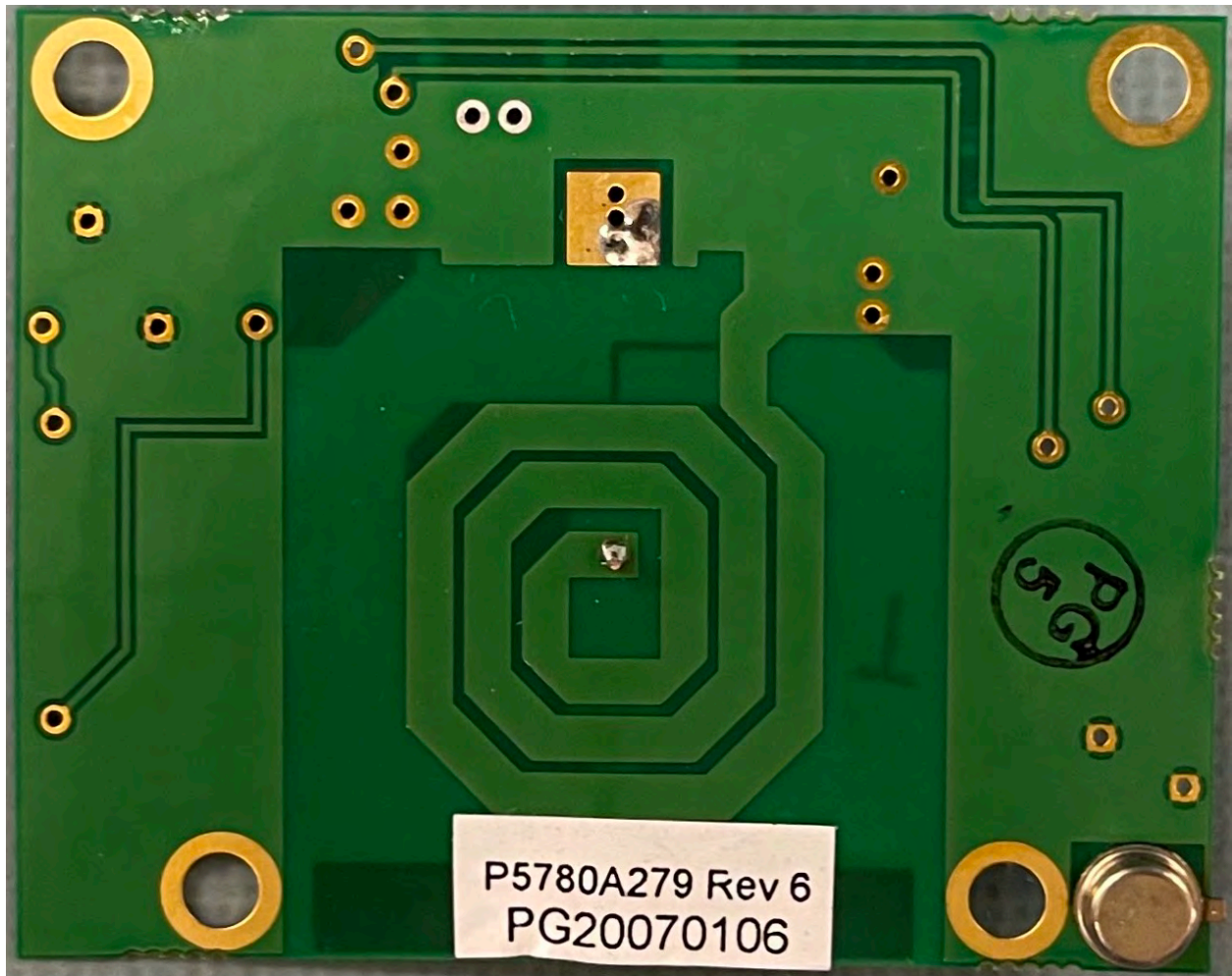


MAMPAA226-0 RF OUTPUT BOARD – BACK VIEW





P5780A279\_6 800W RF Power Module Input Board – Front View



P5780A279\_6 800W RF Power Module Input Board – Back View