

Company: Shure, Inc.

Model: UR1H L3

Date: 10-29-07

Photo Description: **Battery door open**



Company: Shure, Inc.

Model: UR1H L3

Date: 10-29-07

Photo Description: **Front cover removed**

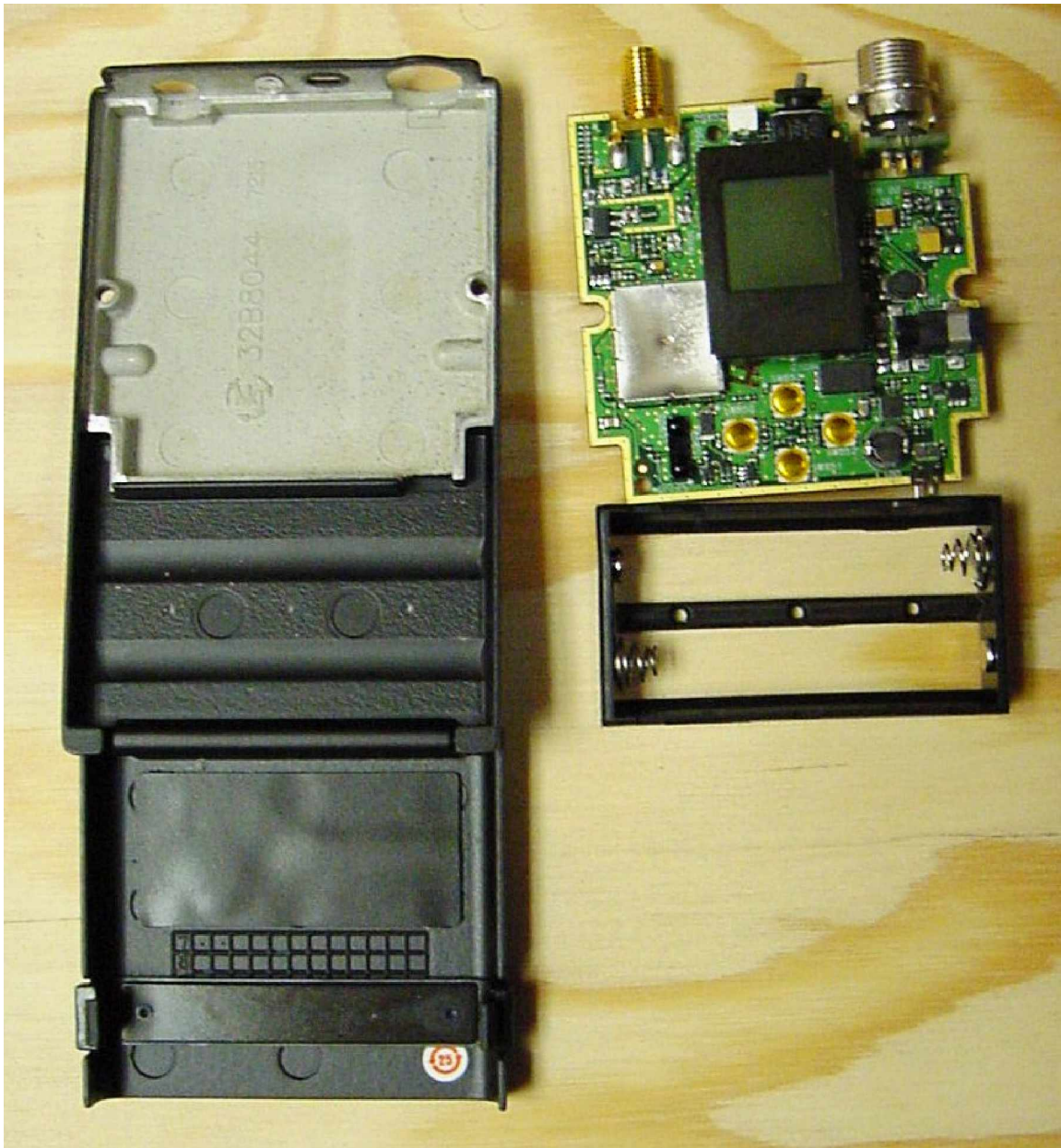


Company: Shure, Inc.

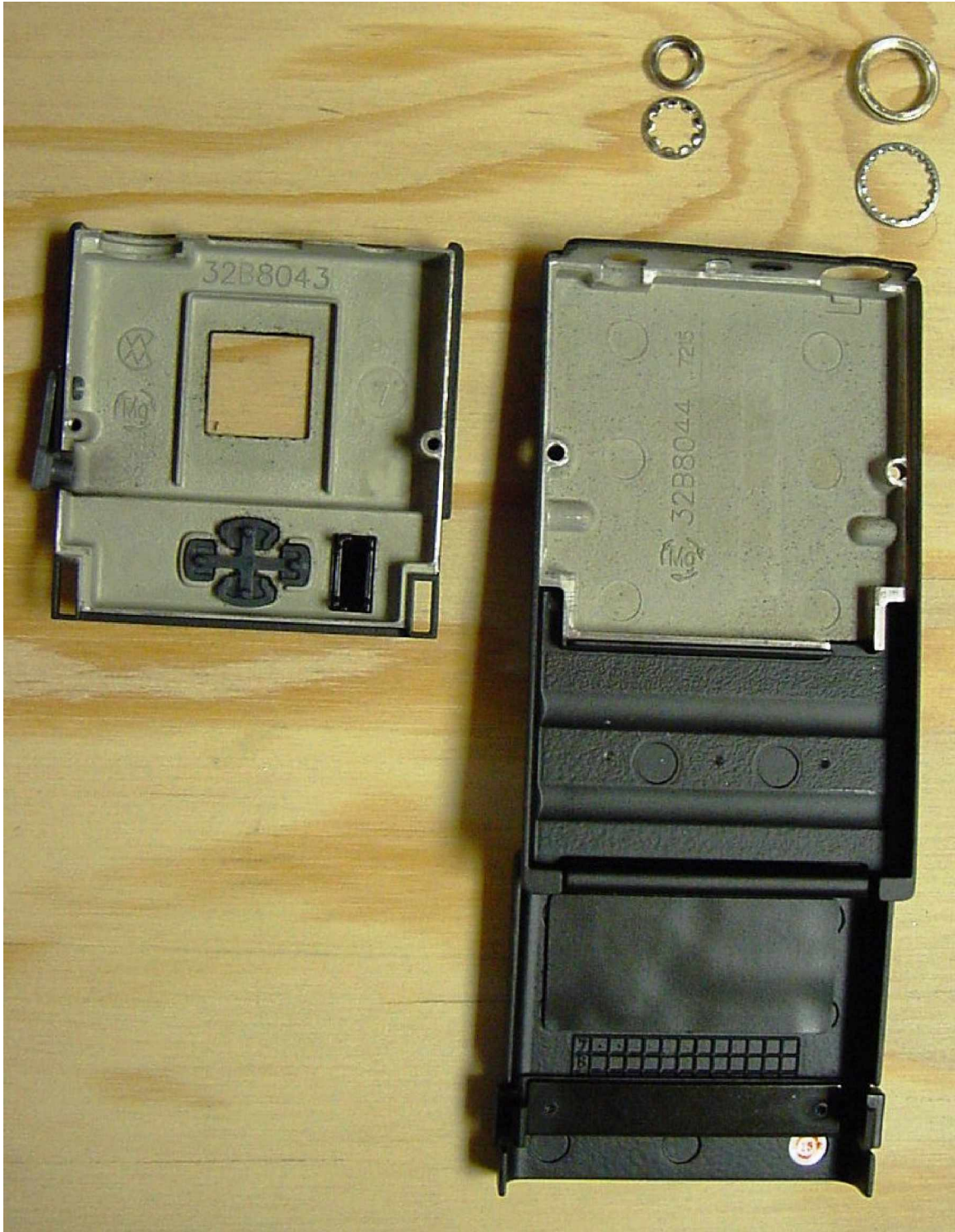
Model: UR1H L3

Date: 10-29-07

Photo Description: Circuit board removed



Company: Shure, Inc.
Model: UR1H L3
Date: 10-29-07
Photo Description: Inside covers

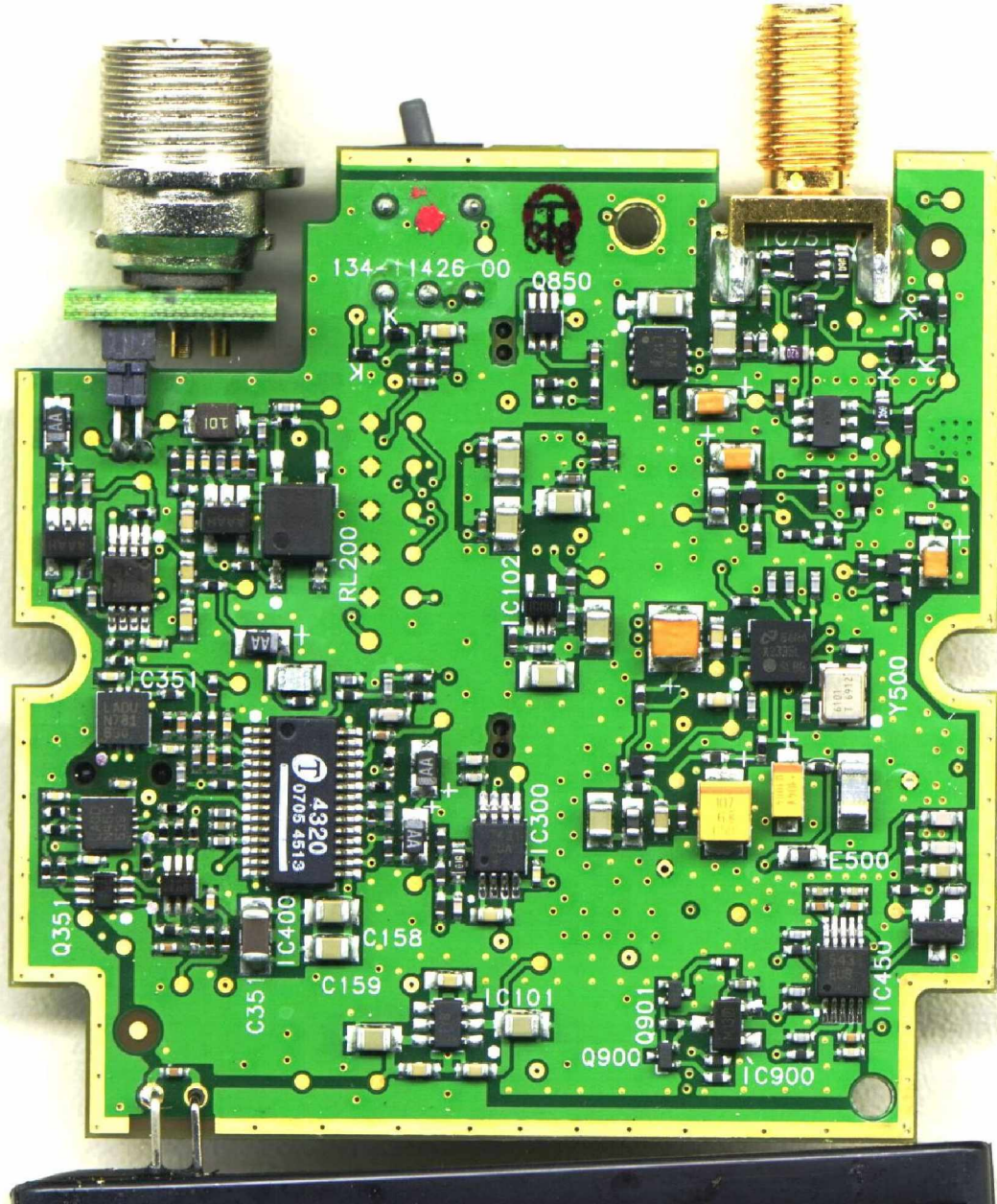


Company: Shure, Inc.

Model: UR1H L3

Date: 10-29-07

Photo Description: Back of circuit board

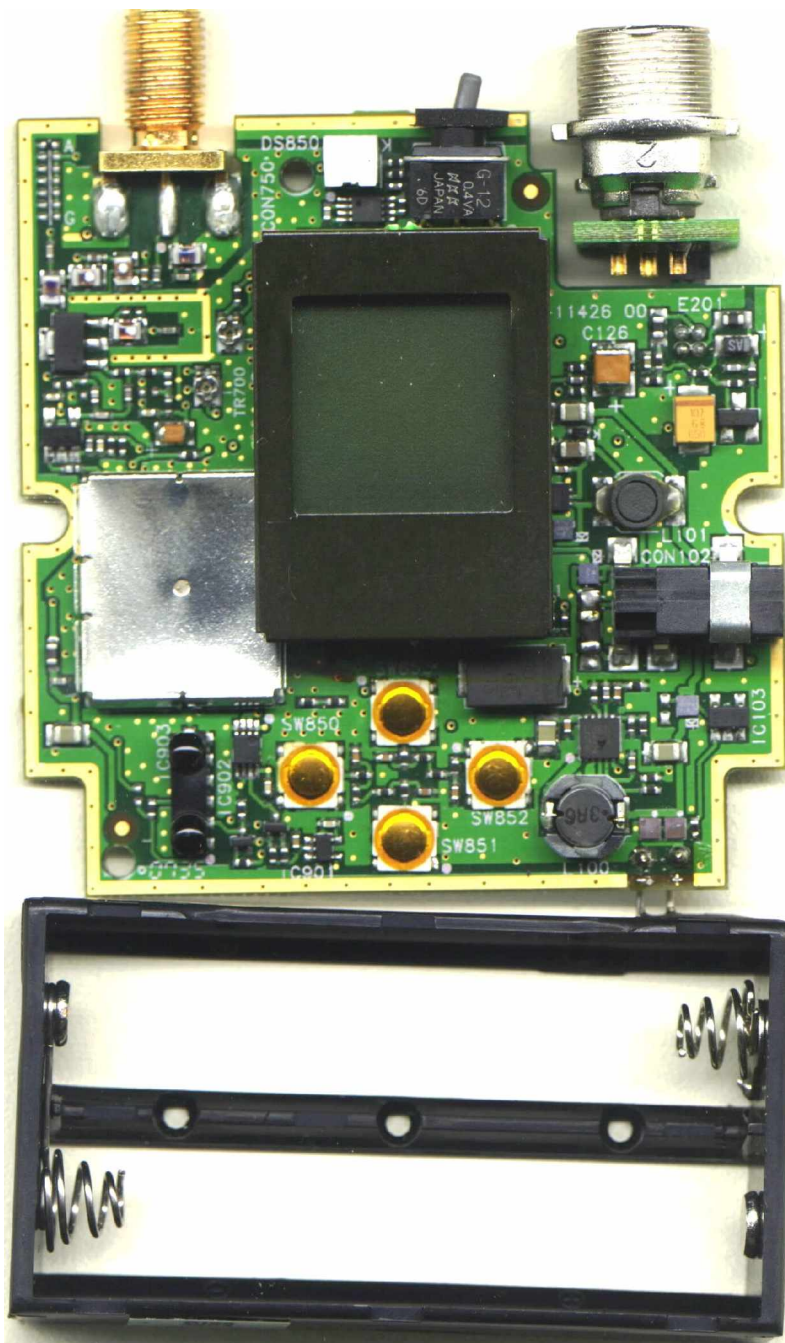


Company: Shure, Inc.

Model: UR1H L3

Date: 10-29-07

Photo Description: Front of circuit board

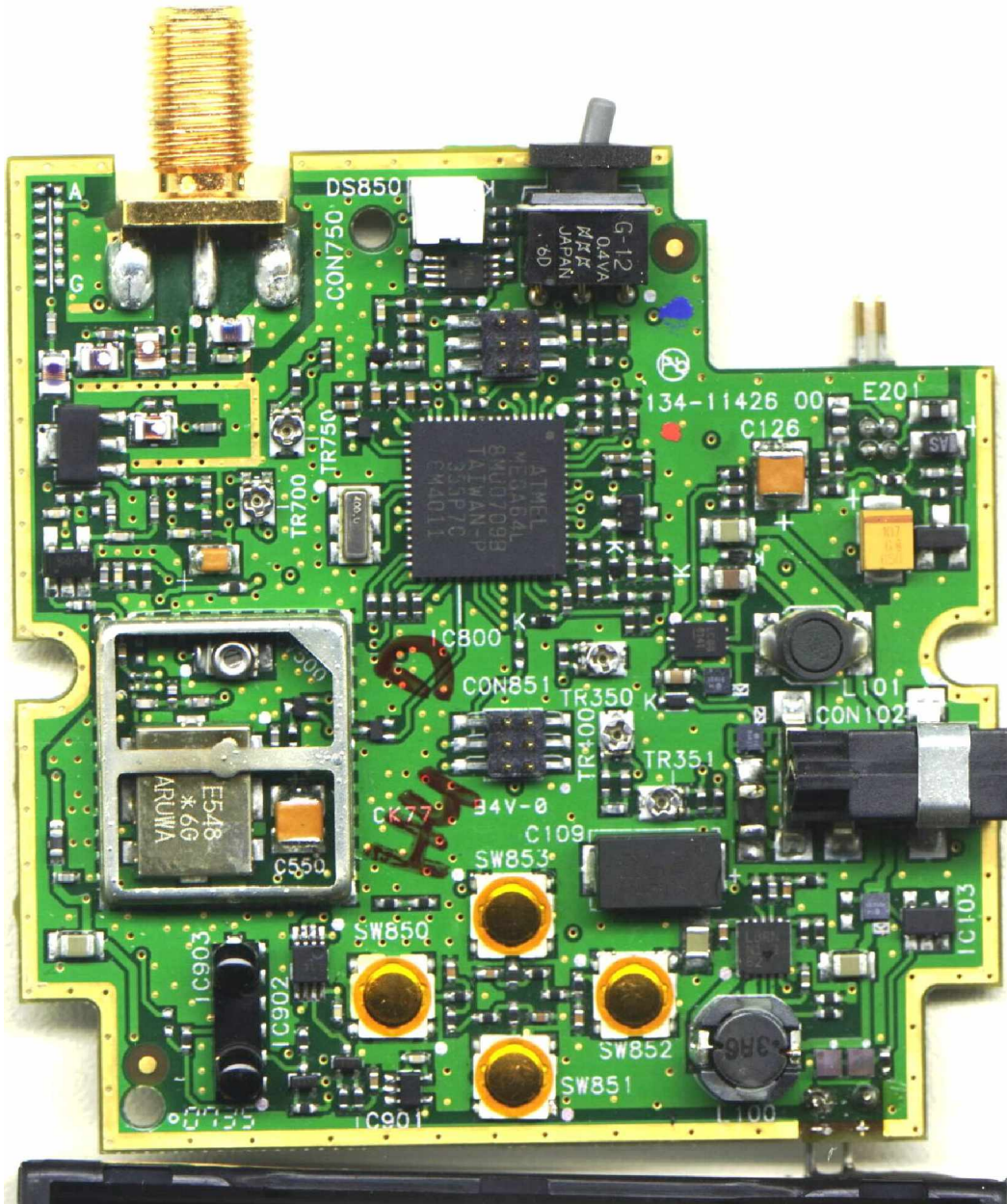


Company: Shure, Inc.

Model: UR1H L3

Date: 10-29-07

Photo Description: Front of circuit board with shield, display, and audio input board removed

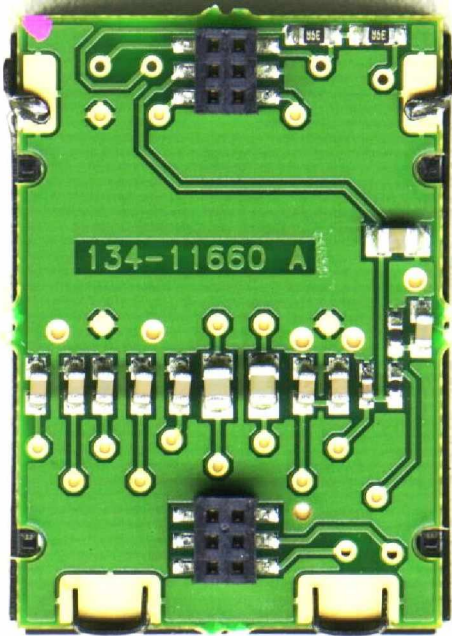


Company: Shure, Inc.

Model: UR1H L3

Date: 10-29-07

Photo Description: **Back side of display**



Company: Shure, Inc.

Model: UR1H L3

Date: 10-29-07

Photo Description: Audio input board

